



# Full wwPDB X-ray Structure Validation Report ⓘ

Sep 6, 2023 – 04:14 AM EDT

PDB ID : 4EV8  
Title : Crystal structure of mouse catenin beta-59 in 2.4M urea.  
Authors : Wang, C.; Zhang, G.Y.  
Deposited on : 2012-04-26  
Resolution : 1.90 Å(reported)

This is a Full wwPDB X-ray Structure Validation Report for a publicly released PDB entry.

We welcome your comments at [validation@mail.wwpdb.org](mailto:validation@mail.wwpdb.org)

A user guide is available at

<https://www.wwpdb.org/validation/2017/XrayValidationReportHelp>

with specific help available everywhere you see the ⓘ symbol.

The types of validation reports are described at

<http://www.wwpdb.org/validation/2017/FAQs#types>.

---

The following versions of software and data (see [references ⓘ](#)) were used in the production of this report:

MolProbity : 4.02b-467  
Mogul : 1.8.5 (274361), CSD as541be (2020)  
Xtrriage (Phenix) : 1.13  
EDS : 2.35  
Percentile statistics : 20191225.v01 (using entries in the PDB archive December 25th 2019)  
Refmac : 5.8.0158  
CCP4 : 7.0.044 (Gargrove)  
Ideal geometry (proteins) : Engh & Huber (2001)  
Ideal geometry (DNA, RNA) : Parkinson et al. (1996)  
Validation Pipeline (wwPDB-VP) : 2.35

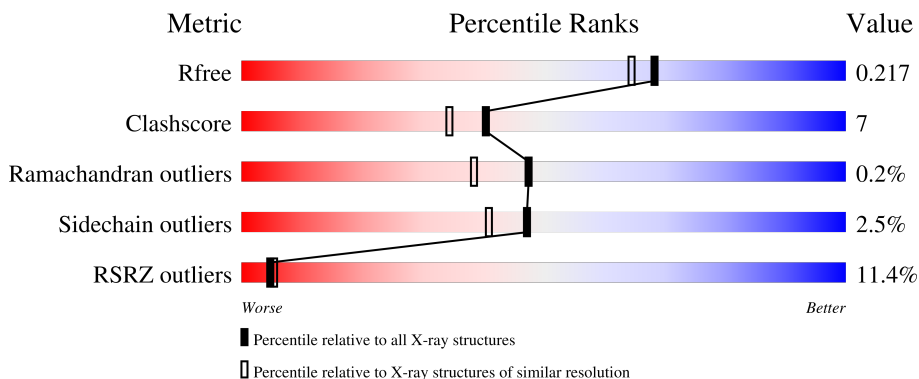
# 1 Overall quality at a glance

The following experimental techniques were used to determine the structure:

*X-RAY DIFFRACTION*

The reported resolution of this entry is 1.90 Å.

Percentile scores (ranging between 0-100) for global validation metrics of the entry are shown in the following graphic. The table shows the number of entries on which the scores are based.



Metric	Whole archive (#Entries)	Similar resolution (#Entries, resolution range(Å))
$R_{free}$	130704	6207 (1.90-1.90)
Clashscore	141614	6847 (1.90-1.90)
Ramachandran outliers	138981	6760 (1.90-1.90)
Sidechain outliers	138945	6760 (1.90-1.90)
RSRZ outliers	127900	6082 (1.90-1.90)

The table below summarises the geometric issues observed across the polymeric chains and their fit to the electron density. The red, orange, yellow and green segments of the lower bar indicate the fraction of residues that contain outliers for  $\geq 3$ , 2, 1 and 0 types of geometric quality criteria respectively. A grey segment represents the fraction of residues that are not modelled. The numeric value for each fraction is indicated below the corresponding segment, with a dot representing fractions  $\leq 5\%$ . The upper red bar (where present) indicates the fraction of residues that have poor fit to the electron density. The numeric value is given above the bar.

Mol	Chain	Length	Quality of chain
1	A	538	

The following table lists non-polymeric compounds, carbohydrate monomers and non-standard residues in protein, DNA, RNA chains that are outliers for geometric or electron-density-fit criteria:

Mol	Type	Chain	Res	Chirality	Geometry	Clashes	Electron density
2	URE	A	717	-	-	-	X

## 2 Entry composition [i](#)

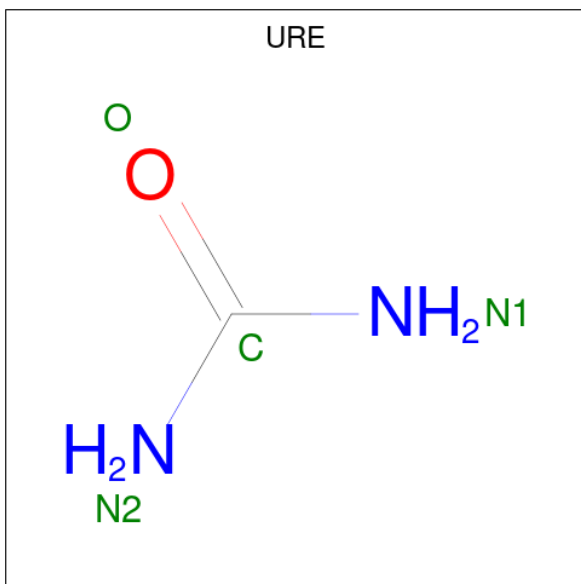
There are 3 unique types of molecules in this entry. The entry contains 4338 atoms, of which 0 are hydrogens and 0 are deuteriums.

In the tables below, the ZeroOcc column contains the number of atoms modelled with zero occupancy, the AltConf column contains the number of residues with at least one atom in alternate conformation and the Trace column contains the number of residues modelled with at most 2 atoms.

- Molecule 1 is a protein called Catenin beta-1.

Mol	Chain	Residues	Atoms					ZeroOcc	AltConf	Trace
			Total	C	N	O	S			
1	A	492	3754	2359	683	685	27	0	1	0

- Molecule 2 is UREA (three-letter code: URE) (formula: CH<sub>4</sub>N<sub>2</sub>O).



Mol	Chain	Residues	Atoms				ZeroOcc	AltConf
			Total	C	N	O		
2	A	1	4	1	2	1	0	0
2	A	1	4	1	2	1	0	0
2	A	1	4	1	2	1	0	0
2	A	1	4	1	2	1	0	0
2	A	1	4	1	2	1	0	0

*Continued on next page...*

*Continued from previous page...*

Mol	Chain	Residues	Atoms				ZeroOcc	AltConf
2	A	1	Total	C	N	O	0	0
			4	1	2	1		
2	A	1	Total	C	N	O	0	0
			4	1	2	1		
2	A	1	Total	C	N	O	0	0
			4	1	2	1		
2	A	1	Total	C	N	O	0	0
			4	1	2	1		
2	A	1	Total	C	N	O	0	0
			4	1	2	1		
2	A	1	Total	C	N	O	0	0
			4	1	2	1		
2	A	1	Total	C	N	O	0	0
			4	1	2	1		
2	A	1	Total	C	N	O	0	0
			4	1	2	1		
2	A	1	Total	C	N	O	0	0
			4	1	2	1		
2	A	1	Total	C	N	O	0	0
			4	1	2	1		

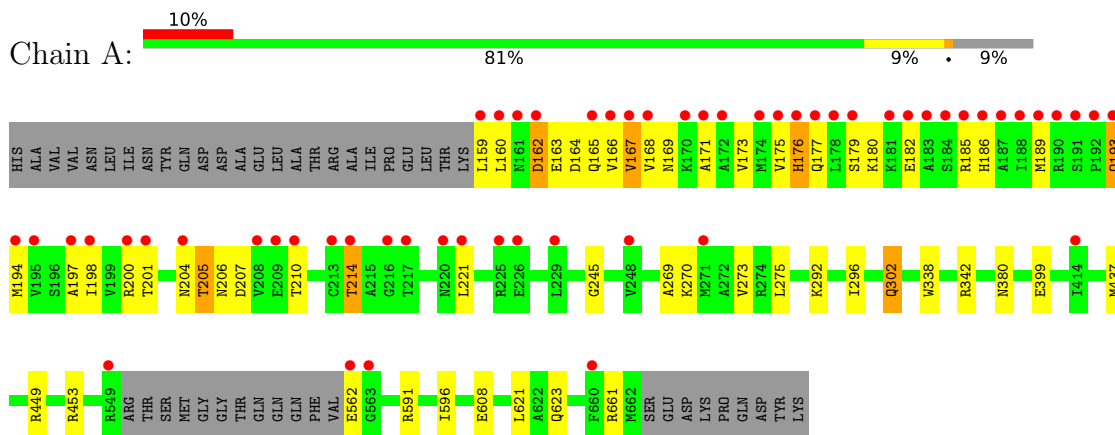
- Molecule 3 is water.

Mol	Chain	Residues	Atoms		ZeroOcc	AltConf
3	A	512	Total	O	0	0
			512	512		

### 3 Residue-property plots [i](#)

These plots are drawn for all protein, RNA, DNA and oligosaccharide chains in the entry. The first graphic for a chain summarises the proportions of the various outlier classes displayed in the second graphic. The second graphic shows the sequence view annotated by issues in geometry and electron density. Residues are color-coded according to the number of geometric quality criteria for which they contain at least one outlier: green = 0, yellow = 1, orange = 2 and red = 3 or more. A red dot above a residue indicates a poor fit to the electron density ( $RSRZ > 2$ ). Stretches of 2 or more consecutive residues without any outlier are shown as a green connector. Residues present in the sample, but not in the model, are shown in grey.

- Molecule 1: Catenin beta-1



## 4 Data and refinement statistics

Property	Value	Source
Space group	C 2 2 21	Depositor
Cell constants a, b, c, $\alpha$ , $\beta$ , $\gamma$	64.19Å 102.59Å 187.09Å 90.00° 90.00° 90.00°	Depositor
Resolution (Å)	35.47 – 1.90 35.47 – 1.90	Depositor EDS
% Data completeness (in resolution range)	96.4 (35.47-1.90) 96.4 (35.47-1.90)	Depositor EDS
$R_{merge}$	(Not available)	Depositor
$R_{sym}$	0.07	Depositor
$\langle I/\sigma(I) \rangle$ <sup>1</sup>	3.04 (at 1.91Å)	Xtrriage
Refinement program	PHENIX (phenix.refine: 1.7.3_928)	Depositor
R, $R_{free}$	0.177 , 0.220 0.173 , 0.217	Depositor DCC
$R_{free}$ test set	2391 reflections (5.08%)	wwPDB-VP
Wilson B-factor (Å <sup>2</sup> )	27.1	Xtrriage
Anisotropy	0.288	Xtrriage
Bulk solvent $k_{sol}$ (e/Å <sup>3</sup> ), $B_{sol}$ (Å <sup>2</sup> )	0.34 , 60.5	EDS
L-test for twinning <sup>2</sup>	$\langle  L  \rangle = 0.49$ , $\langle L^2 \rangle = 0.32$	Xtrriage
Estimated twinning fraction	No twinning to report.	Xtrriage
$F_o, F_c$ correlation	0.96	EDS
Total number of atoms	4338	wwPDB-VP
Average B, all atoms (Å <sup>2</sup> )	38.0	wwPDB-VP

Xtrriage's analysis on translational NCS is as follows: *The largest off-origin peak in the Patterson function is 5.01% of the height of the origin peak. No significant pseudotranslation is detected.*

<sup>1</sup>Intensities estimated from amplitudes.

<sup>2</sup>Theoretical values of  $\langle |L| \rangle$ ,  $\langle L^2 \rangle$  for acentric reflections are 0.5, 0.333 respectively for untwinned datasets, and 0.375, 0.2 for perfectly twinned datasets.

## 5 Model quality [i](#)

### 5.1 Standard geometry [i](#)

Bond lengths and bond angles in the following residue types are not validated in this section: URE

The Z score for a bond length (or angle) is the number of standard deviations the observed value is removed from the expected value. A bond length (or angle) with  $|Z| > 5$  is considered an outlier worth inspection. RMSZ is the root-mean-square of all Z scores of the bond lengths (or angles).

Mol	Chain	Bond lengths		Bond angles	
		RMSZ	# Z  >5	RMSZ	# Z  >5
1	A	0.34	0/3809	0.49	0/5167

There are no bond length outliers.

There are no bond angle outliers.

There are no chirality outliers.

There are no planarity outliers.

### 5.2 Too-close contacts [i](#)

In the following table, the Non-H and H(model) columns list the number of non-hydrogen atoms and hydrogen atoms in the chain respectively. The H(added) column lists the number of hydrogen atoms added and optimized by MolProbity. The Clashes column lists the number of clashes within the asymmetric unit, whereas Symm-Clashes lists symmetry-related clashes.

Mol	Chain	Non-H	H(model)	H(added)	Clashes	Symm-Clashes
1	A	3754	0	3901	55	0
2	A	72	0	72	3	0
3	A	512	0	0	9	1
All	All	4338	0	3973	56	1

The all-atom clashscore is defined as the number of clashes found per 1000 atoms (including hydrogen atoms). The all-atom clashscore for this structure is 7.

All (56) close contacts within the same asymmetric unit are listed below, sorted by their clash magnitude.

Atom-1	Atom-2	Interatomic distance (Å)	Clash overlap (Å)
1:A:210:THR:O	1:A:214:THR:OG1	2.04	0.75

*Continued on next page...*

*Continued from previous page...*

Atom-1	Atom-2	Interatomic distance (Å)	Clash overlap (Å)
1:A:197:ALA:O	3:A:976:HOH:O	2.12	0.66
2:A:716:URE:N2	3:A:965:HOH:O	2.29	0.65
1:A:167:VAL:O	1:A:167:VAL:HG12	1.97	0.64
1:A:175:VAL:HG11	1:A:198:ILE:HD11	1.79	0.63
1:A:399:GLU:HG3	1:A:437:MET:SD	2.39	0.62
1:A:608:GLU:HG3	2:A:713:URE:HN11	1.65	0.61
1:A:166:VAL:O	1:A:167:VAL:HB	2.02	0.58
1:A:176:HIS:O	1:A:179:SER:OG	2.17	0.58
1:A:169:ASN:N	1:A:169:ASN:OD1	2.36	0.58
1:A:201:THR:O	1:A:205:THR:HG22	2.04	0.57
1:A:179:SER:O	1:A:185:ARG:NE	2.32	0.55
1:A:177:GLN:OE1	1:A:177:GLN:N	2.31	0.55
1:A:200:ARG:O	1:A:204:ASN:ND2	2.31	0.54
1:A:182:GLU:HG3	1:A:186:HIS:HD2	1.73	0.54
1:A:165:GLN:O	1:A:168:VAL:HG22	2.09	0.52
1:A:164:ASP:C	1:A:164:ASP:OD1	2.45	0.52
1:A:175:VAL:HG21	1:A:194:MET:HE1	1.94	0.49
1:A:302:GLN:NE2	3:A:1042:HOH:O	2.45	0.49
1:A:189:MET:HB3	1:A:221:LEU:HD22	1.94	0.48
1:A:245:GLY:HA2	2:A:714:URE:HN12	1.77	0.48
1:A:198:ILE:HG23	1:A:214:THR:HG22	1.96	0.47
1:A:449:ARG:HH11	1:A:453:ARG:HD3	1.79	0.47
1:A:596:ILE:HD13	3:A:1145:HOH:O	2.15	0.47
1:A:163:GLU:O	1:A:164:ASP:HB3	2.15	0.47
1:A:171:ALA:O	1:A:175:VAL:HG23	2.14	0.46
1:A:399:GLU:H	1:A:399:GLU:CD	2.18	0.46
1:A:591:ARG:NE	3:A:995:HOH:O	2.30	0.46
1:A:194:MET:HA	1:A:197:ALA:HB3	1.97	0.46
1:A:380:ASN:ND2	3:A:1089:HOH:O	2.49	0.46
1:A:205:THR:HG21	1:A:210:THR:HG23	1.97	0.45
1:A:207:ASP:HB3	1:A:210:THR:HG22	1.97	0.45
1:A:167:VAL:O	1:A:167:VAL:CG1	2.63	0.45
1:A:194:MET:O	1:A:198:ILE:N	2.49	0.45
1:A:165:GLN:O	1:A:168:VAL:CG2	2.65	0.44
1:A:162:ASP:N	1:A:162:ASP:OD1	2.49	0.44
1:A:165:GLN:HG3	1:A:166:VAL:N	2.33	0.44
1:A:270:LYS:NZ	3:A:1068:HOH:O	2.27	0.44
1:A:596:ILE:HD11	1:A:621:LEU:HD13	1.98	0.44
1:A:173:VAL:O	1:A:177:GLN:NE2	2.50	0.43
1:A:449:ARG:NH1	1:A:453:ARG:HD3	2.33	0.43
1:A:591:ARG:NH1	3:A:943:HOH:O	2.33	0.43

*Continued on next page...*



Continued from previous page...

Atom-1	Atom-2	Interatomic distance (Å)	Clash overlap (Å)
1:A:179:SER:HA	1:A:185:ARG:HG3	1.99	0.43
1:A:205:THR:OG1	1:A:206:ASN:N	2.51	0.43
1:A:166:VAL:O	1:A:167:VAL:CB	2.67	0.43
1:A:169:ASN:O	1:A:173:VAL:HG23	2.19	0.43
1:A:201:THR:N	3:A:976:HOH:O	2.20	0.43
1:A:269:ALA:O	1:A:273:VAL:HG23	2.18	0.42
1:A:182:GLU:HG3	1:A:186:HIS:CD2	2.52	0.42
1:A:623:GLN:HB3	1:A:661:ARG:NH1	2.34	0.41
1:A:338:TRP:CE2	1:A:342:ARG:HD2	2.56	0.41
1:A:194:MET:HE3	1:A:194:MET:HB2	1.93	0.41
1:A:177:GLN:HA	1:A:180:LYS:HG3	2.03	0.41
1:A:292:LYS:O	1:A:296:ILE:HG12	2.20	0.41
1:A:194:MET:O	1:A:198:ILE:HG12	2.21	0.40
1:A:193:GLN:CD	1:A:194:MET:H	2.23	0.40

All (1) symmetry-related close contacts are listed below. The label for Atom-2 includes the symmetry operator and encoded unit-cell translations to be applied.

Atom-1	Atom-2	Interatomic distance (Å)	Clash overlap (Å)
3:A:1238:HOH:O	3:A:1238:HOH:O[4_566]	2.12	0.08

## 5.3 Torsion angles [i](#)

### 5.3.1 Protein backbone [i](#)

In the following table, the Percentiles column shows the percent Ramachandran outliers of the chain as a percentile score with respect to all X-ray entries followed by that with respect to entries of similar resolution.

The Analysed column shows the number of residues for which the backbone conformation was analysed, and the total number of residues.

Mol	Chain	Analysed	Favoured	Allowed	Outliers	Percentiles
1	A	489/538 (91%)	477 (98%)	11 (2%)	1 (0%)	47 38

All (1) Ramachandran outliers are listed below:

Mol	Chain	Res	Type
1	A	167	VAL

### 5.3.2 Protein sidechains [i](#)

In the following table, the Percentiles column shows the percent sidechain outliers of the chain as a percentile score with respect to all X-ray entries followed by that with respect to entries of similar resolution.

The Analysed column shows the number of residues for which the sidechain conformation was analysed, and the total number of residues.

Mol	Chain	Analysed	Rotameric	Outliers	Percentiles
1	A	408/447 (91%)	398 (98%)	10 (2%)	47 41

All (10) residues with a non-rotameric sidechain are listed below:

Mol	Chain	Res	Type
1	A	159	LEU
1	A	160	LEU
1	A	162	ASP
1	A	176	HIS
1	A	193	GLN
1	A	205	THR
1	A	214	THR
1	A	275	LEU
1	A	302	GLN
1	A	562	GLU

Sometimes sidechains can be flipped to improve hydrogen bonding and reduce clashes. All (2) such sidechains are listed below:

Mol	Chain	Res	Type
1	A	186	HIS
1	A	224	HIS

### 5.3.3 RNA [i](#)

There are no RNA molecules in this entry.

## 5.4 Non-standard residues in protein, DNA, RNA chains [i](#)

There are no non-standard protein/DNA/RNA residues in this entry.

## 5.5 Carbohydrates [i](#)

There are no monosaccharides in this entry.

## 5.6 Ligand geometry [i](#)

18 ligands are modelled in this entry.

In the following table, the Counts columns list the number of bonds (or angles) for which Mogul statistics could be retrieved, the number of bonds (or angles) that are observed in the model and the number of bonds (or angles) that are defined in the Chemical Component Dictionary. The Link column lists molecule types, if any, to which the group is linked. The Z score for a bond length (or angle) is the number of standard deviations the observed value is removed from the expected value. A bond length (or angle) with  $|Z| > 2$  is considered an outlier worth inspection. RMSZ is the root-mean-square of all Z scores of the bond lengths (or angles).

Mol	Type	Chain	Res	Link	Bond lengths			Bond angles		
					Counts	RMSZ	# Z  > 2	Counts	RMSZ	# Z  > 2
2	URE	A	718	-	3,3,3	1.25	0	3,3,3	1.02	0
2	URE	A	717	-	3,3,3	1.12	0	3,3,3	0.92	0
2	URE	A	706	-	3,3,3	1.24	0	3,3,3	0.81	0
2	URE	A	707	-	3,3,3	1.24	0	3,3,3	0.77	0
2	URE	A	710	-	3,3,3	1.16	0	3,3,3	0.83	0
2	URE	A	709	-	3,3,3	1.17	0	3,3,3	0.85	0
2	URE	A	714	-	3,3,3	1.19	0	3,3,3	0.73	0
2	URE	A	708	-	3,3,3	1.22	1 (33%)	3,3,3	0.91	0
2	URE	A	711	-	3,3,3	1.09	0	3,3,3	0.69	0
2	URE	A	703	-	3,3,3	1.26	1 (33%)	3,3,3	0.98	0
2	URE	A	701	-	3,3,3	1.34	1 (33%)	3,3,3	0.84	0
2	URE	A	712	-	3,3,3	1.17	0	3,3,3	0.91	0
2	URE	A	713	-	3,3,3	1.17	0	3,3,3	0.59	0
2	URE	A	715	-	3,3,3	1.20	0	3,3,3	0.82	0
2	URE	A	705	-	3,3,3	1.29	0	3,3,3	0.46	0
2	URE	A	716	-	3,3,3	1.16	0	3,3,3	0.70	0
2	URE	A	704	-	3,3,3	1.24	0	3,3,3	1.10	0
2	URE	A	702	-	3,3,3	1.06	0	3,3,3	0.74	0

All (3) bond length outliers are listed below:

Mol	Chain	Res	Type	Atoms	Z	Observed(Å)	Ideal(Å)
2	A	701	URE	O-C	-2.07	1.18	1.26
2	A	703	URE	O-C	-2.02	1.18	1.26
2	A	708	URE	O-C	-2.01	1.18	1.26

There are no bond angle outliers.

There are no chirality outliers.

There are no torsion outliers.

There are no ring outliers.

3 monomers are involved in 3 short contacts:

Mol	Chain	Res	Type	Clashes	Symm-Clashes
2	A	714	URE	1	0
2	A	713	URE	1	0
2	A	716	URE	1	0

## 5.7 Other polymers [i](#)

There are no such residues in this entry.

## 5.8 Polymer linkage issues [i](#)

There are no chain breaks in this entry.

## 6 Fit of model and data

### 6.1 Protein, DNA and RNA chains

In the following table, the column labelled ‘#RSRZ> 2’ contains the number (and percentage) of RSRZ outliers, followed by percent RSRZ outliers for the chain as percentile scores relative to all X-ray entries and entries of similar resolution. The OWAB column contains the minimum, median, 95<sup>th</sup> percentile and maximum values of the occupancy-weighted average B-factor per residue. The column labelled ‘Q< 0.9’ lists the number of (and percentage) of residues with an average occupancy less than 0.9.

Mol	Chain	Analysed	<RSRZ>	#RSRZ>2	OWAB(Å <sup>2</sup> )	Q<0.9
1	A	492/538 (91%)	0.42	56 (11%) <b>5</b>   <b>5</b>	16, 27, 98, 116	2 (0%)

All (56) RSRZ outliers are listed below:

Mol	Chain	Res	Type	RSRZ
1	A	190	ARG	10.7
1	A	160	LEU	9.0
1	A	189	MET	8.4
1	A	174	MET	8.0
1	A	183	ALA	7.7
1	A	187	ALA	7.4
1	A	185	ARG	6.9
1	A	161	ASN	6.7
1	A	172	ALA	6.2
1	A	175	VAL	6.1
1	A	168	VAL	6.0
1	A	165	GLN	6.0
1	A	191	SER	5.9
1	A	171	ALA	5.8
1	A	178	LEU	5.7
1	A	166	VAL	5.6
1	A	159	LEU	5.2
1	A	549	ARG	5.0
1	A	192	PRO	4.6
1	A	562	GLU	4.6
1	A	170	LYS	4.4
1	A	198	ILE	4.3
1	A	221	LEU	4.1
1	A	186	HIS	4.0
1	A	162	ASP	3.9
1	A	179	SER	3.8
1	A	193	GLN	3.7

*Continued on next page...*

*Continued from previous page...*

Mol	Chain	Res	Type	RSRZ
1	A	182	GLU	3.7
1	A	184	SER	3.7
1	A	176	HIS	3.5
1	A	208	VAL	3.3
1	A	201	THR	3.3
1	A	229	LEU	3.2
1	A	195	VAL	3.2
1	A	226	GLU	3.2
1	A	197	ALA	3.1
1	A	177	GLN	3.0
1	A	200	ARG	2.9
1	A	204	ASN	2.8
1	A	248	VAL	2.8
1	A	217	THR	2.8
1	A	188	ILE	2.7
1	A	225	ARG	2.7
1	A	213	CYS	2.7
1	A	194	MET	2.6
1	A	563	GLY	2.6
1	A	167	VAL	2.4
1	A	210	THR	2.4
1	A	660	PHE	2.3
1	A	271[A]	MET	2.3
1	A	216	GLY	2.3
1	A	214	THR	2.2
1	A	220	ASN	2.2
1	A	209	GLU	2.2
1	A	181	LYS	2.2
1	A	414	ILE	2.0

## 6.2 Non-standard residues in protein, DNA, RNA chains [i](#)

There are no non-standard protein/DNA/RNA residues in this entry.

## 6.3 Carbohydrates [i](#)

There are no monosaccharides in this entry.

## 6.4 Ligands [i](#)

In the following table, the Atoms column lists the number of modelled atoms in the group and the number defined in the chemical component dictionary. The B-factors column lists the minimum, median, 95<sup>th</sup> percentile and maximum values of B factors of atoms in the group. The column labelled 'Q< 0.9' lists the number of atoms with occupancy less than 0.9.

Mol	Type	Chain	Res	Atoms	RSCC	RSR	B-factors(Å <sup>2</sup> )	Q<0.9
2	URE	A	717	4/4	0.74	1.07	39,47,56,60	4
2	URE	A	712	4/4	0.81	0.39	49,60,66,77	0
2	URE	A	711	4/4	0.81	0.24	40,42,53,55	0
2	URE	A	709	4/4	0.84	0.23	57,58,60,62	0
2	URE	A	718	4/4	0.84	0.30	47,49,51,57	0
2	URE	A	716	4/4	0.86	0.42	56,57,61,64	0
2	URE	A	715	4/4	0.87	0.30	57,73,73,83	0
2	URE	A	714	4/4	0.90	0.27	61,63,64,71	0
2	URE	A	710	4/4	0.91	0.35	48,48,50,50	0
2	URE	A	707	4/4	0.92	0.10	43,46,46,48	1
2	URE	A	713	4/4	0.93	0.39	36,45,48,59	0
2	URE	A	703	4/4	0.94	0.16	24,31,34,38	3
2	URE	A	702	4/4	0.96	0.08	20,22,26,32	0
2	URE	A	701	4/4	0.97	0.27	31,43,44,53	4
2	URE	A	708	4/4	0.97	0.09	23,24,27,31	0
2	URE	A	706	4/4	0.97	0.09	29,33,35,36	2
2	URE	A	705	4/4	0.98	0.10	25,26,26,28	0
2	URE	A	704	4/4	0.98	0.08	24,24,30,31	0

## 6.5 Other polymers [i](#)

There are no such residues in this entry.