



Full wwPDB X-ray Structure Validation Report ⓘ

Nov 30, 2022 – 06:19 pm GMT

PDB ID : 4CWX
Title : ALPHA-KETOGLUTARATE-DEPENDENT DIOXYGENASE COMPLEX1
Authors : Li, H.; Poulos, T.L.
Deposited on : 2014-04-03
Resolution : 2.15 Å(reported)

This is a Full wwPDB X-ray Structure Validation Report for a publicly released PDB entry.

We welcome your comments at validation@mail.wwpdb.org

A user guide is available at

<https://www.wwpdb.org/validation/2017/XrayValidationReportHelp>

with specific help available everywhere you see the ⓘ symbol.

The types of validation reports are described at

<http://www.wwpdb.org/validation/2017/FAQs#types>.

The following versions of software and data (see [references ⓘ](#)) were used in the production of this report:

MolProbity : 4.02b-467
Mogul : 1.8.4, CSD as541be (2020)
Xtriage (Phenix) : 1.13
EDS : 2.31.3
buster-report : 1.1.7 (2018)
Percentile statistics : 20191225.v01 (using entries in the PDB archive December 25th 2019)
Refmac : 5.8.0267
CCP4 : 7.1.010 (Gargrove)
Ideal geometry (proteins) : Engh & Huber (2001)
Ideal geometry (DNA, RNA) : Parkinson et al. (1996)
Validation Pipeline (wwPDB-VP) : 2.31.3

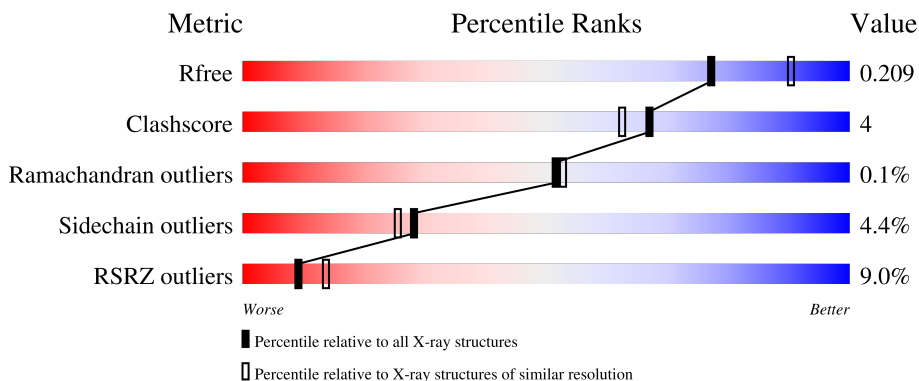
1 Overall quality at a glance

The following experimental techniques were used to determine the structure:

X-RAY DIFFRACTION

The reported resolution of this entry is 2.15 Å.

Percentile scores (ranging between 0-100) for global validation metrics of the entry are shown in the following graphic. The table shows the number of entries on which the scores are based.



Metric	Whole archive (#Entries)	Similar resolution (#Entries, resolution range(Å))
R_{free}	130704	1479 (2.16-2.16)
Clashscore	141614	1585 (2.16-2.16)
Ramachandran outliers	138981	1560 (2.16-2.16)
Sidechain outliers	138945	1559 (2.16-2.16)
RSRZ outliers	127900	1456 (2.16-2.16)

The table below summarises the geometric issues observed across the polymeric chains and their fit to the electron density. The red, orange, yellow and green segments of the lower bar indicate the fraction of residues that contain outliers for ≥ 3 , 2, 1 and 0 types of geometric quality criteria respectively. A grey segment represents the fraction of residues that are not modelled. The numeric value for each fraction is indicated below the corresponding segment, with a dot representing fractions $\leq 5\%$. The upper red bar (where present) indicates the fraction of residues that have poor fit to the electron density. The numeric value is given above the bar.

Mol	Chain	Length	Quality of chain
1	A	443	 10% 81% 8% • 9%
1	B	443	 7% 80% 9% • 9%

2 Entry composition [i](#)

There are 7 unique types of molecules in this entry. The entry contains 6914 atoms, of which 0 are hydrogens and 0 are deuteriums.

In the tables below, the ZeroOcc column contains the number of atoms modelled with zero occupancy, the AltConf column contains the number of residues with at least one atom in alternate conformation and the Trace column contains the number of residues modelled with at most 2 atoms.

- Molecule 1 is a protein called Nitric oxide synthase.

Mol	Chain	Residues	Atoms					ZeroOcc	AltConf	Trace	
			Total	As	C	N	O				S
1	A	404	Total 3220	As 1	C 2048	N 567	O 588	S 16	0	1	0
1	B	402	Total 3204	As 1	C 2038	N 562	O 586	S 17	0	1	0

- Molecule 2 is PROTOPORPHYRIN IX CONTAINING FE (three-letter code: HEM) (formula: $C_{34}H_{32}FeN_4O_4$).



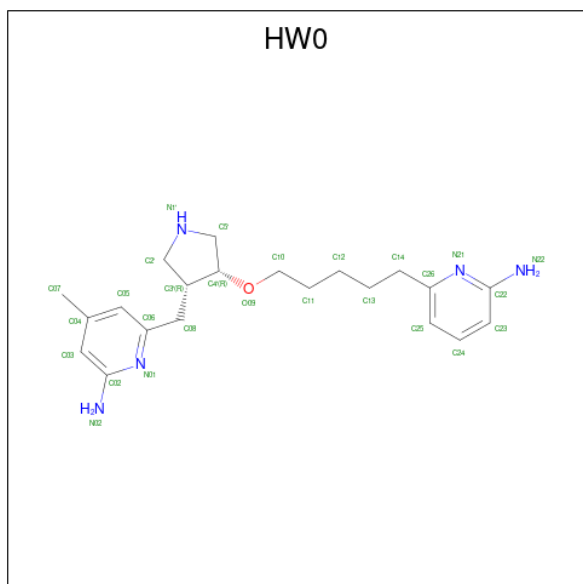
Mol	Chain	Residues	Atoms				ZeroOcc	AltConf	
			Total	C	Fe	N			O
2	A	1	Total 43	C 34	Fe 1	N 4	O 4	0	0
2	B	1	Total 43	C 34	Fe 1	N 4	O 4	0	0

- Molecule 3 is 5,6,7,8-TETRAHYDROBIOPTERIN (three-letter code: H4B) (formula: $C_9H_{15}N_5O_3$).



Mol	Chain	Residues	Atoms				ZeroOcc	AltConf
			Total	C	N	O		
3	A	1	17	9	5	3	0	0
3	B	1	17	9	5	3	0	0

- Molecule 4 is 6-[[[(3R,4R)-4-[[5-(6-aminopyridin-2-yl)pentyl]oxy]pyrrolidin-3-yl]methyl]-4-methylpyridin-2-amine (three-letter code: HW0) (formula: C₂₁H₃₁N₅O).



Mol	Chain	Residues	Atoms				ZeroOcc	AltConf
			Total	C	N	O		
4	A	1	27	21	5	1	0	0

Continued on next page...

Continued from previous page...

Mol	Chain	Residues	Atoms				ZeroOcc	AltConf
			Total	C	N	O		
4	B	1	27	21	5	1	0	0

- Molecule 5 is ACETATE ION (three-letter code: ACT) (formula: C₂H₃O₂).



Mol	Chain	Residues	Atoms			ZeroOcc	AltConf
			Total	C	O		
5	A	1	4	2	2	0	0
5	A	1	4	2	2	0	0
5	B	1	4	2	2	0	0
5	B	1	4	2	2	0	0

- Molecule 6 is ZINC ION (three-letter code: ZN) (formula: Zn).

Mol	Chain	Residues	Atoms		ZeroOcc	AltConf
			Total	Zn		
6	B	1	1	1	0	0

- Molecule 7 is water.

Mol	Chain	Residues	Atoms		ZeroOcc	AltConf
			Total	O		
7	A	152	152	152	0	0

Continued on next page...

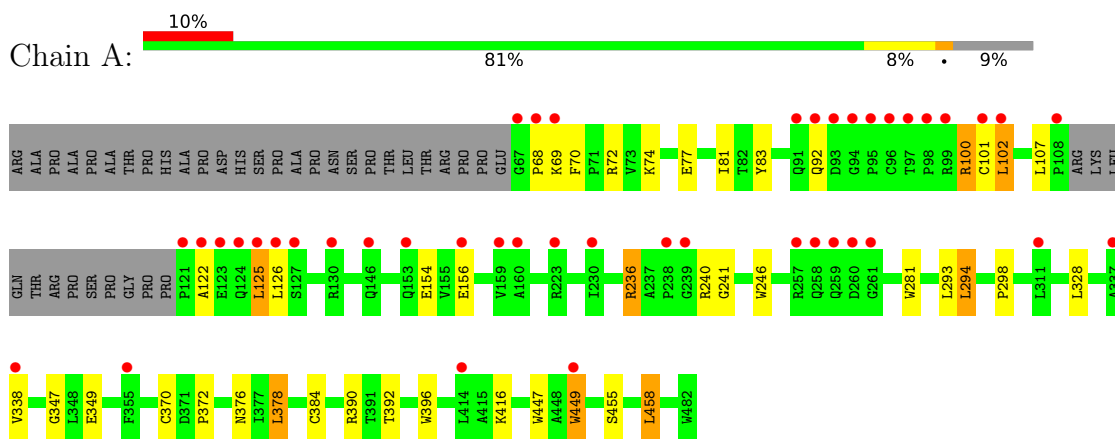
Continued from previous page...

Mol	Chain	Residues	Atoms		ZeroOcc	AltConf
7	B	147	Total 147	O 147	0	0

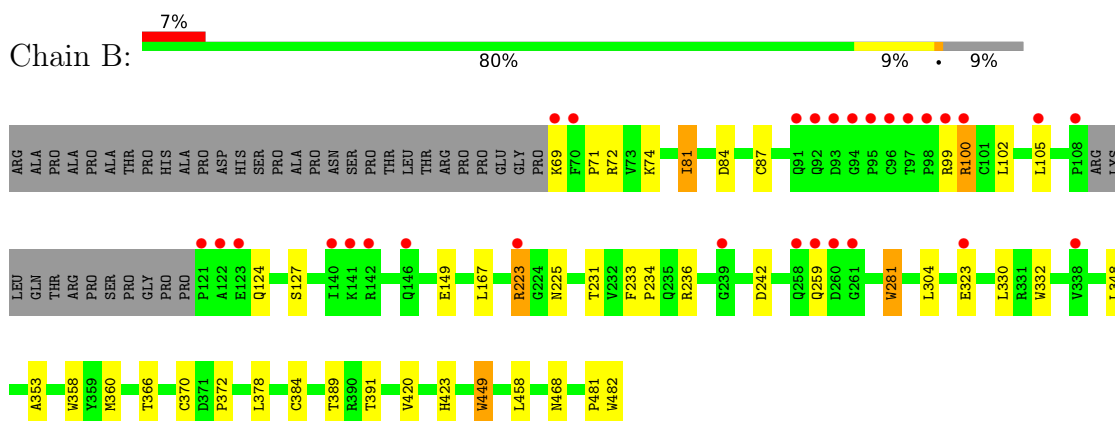
3 Residue-property plots [i](#)

These plots are drawn for all protein, RNA, DNA and oligosaccharide chains in the entry. The first graphic for a chain summarises the proportions of the various outlier classes displayed in the second graphic. The second graphic shows the sequence view annotated by issues in geometry and electron density. Residues are color-coded according to the number of geometric quality criteria for which they contain at least one outlier: green = 0, yellow = 1, orange = 2 and red = 3 or more. A red dot above a residue indicates a poor fit to the electron density ($RSRZ > 2$). Stretches of 2 or more consecutive residues without any outlier are shown as a green connector. Residues present in the sample, but not in the model, are shown in grey.

- Molecule 1: Nitric oxide synthase



- Molecule 1: Nitric oxide synthase



4 Data and refinement statistics

Property	Value	Source
Space group	P 21 21 21	Depositor
Cell constants a, b, c, α , β , γ	57.94Å 106.49Å 156.98Å 90.00° 90.00° 90.00°	Depositor
Resolution (Å)	42.70 – 2.15 39.21 – 2.15	Depositor EDS
% Data completeness (in resolution range)	99.6 (42.70-2.15) 99.7 (39.21-2.15)	Depositor EDS
R_{merge}	0.07	Depositor
R_{sym}	(Not available)	Depositor
$\langle I/\sigma(I) \rangle$ ¹	1.30 (at 2.14Å)	Xtriage
Refinement program	REFMAC 5.6.0117	Depositor
R, R_{free}	0.171 , 0.210 0.169 , 0.209	Depositor DCC
R_{free} test set	2692 reflections (5.01%)	wwPDB-VP
Wilson B-factor (Å ²)	41.3	Xtriage
Anisotropy	0.481	Xtriage
Bulk solvent k_{sol} (e/Å ³), B_{sol} (Å ²)	(Not available) , (Not available)	EDS
L-test for twinning ²	$\langle L \rangle = 0.49$, $\langle L^2 \rangle = 0.33$	Xtriage
Estimated twinning fraction	No twinning to report.	Xtriage
F_o, F_c correlation	0.97	EDS
Total number of atoms	6914	wwPDB-VP
Average B, all atoms (Å ²)	49.0	wwPDB-VP

Xtriage's analysis on translational NCS is as follows: *The largest off-origin peak in the Patterson function is 3.58% of the height of the origin peak. No significant pseudotranslation is detected.*

¹Intensities estimated from amplitudes.

²Theoretical values of $\langle |L| \rangle$, $\langle L^2 \rangle$ for acentric reflections are 0.5, 0.333 respectively for untwinned datasets, and 0.375, 0.2 for perfectly twinned datasets.

5 Model quality [i](#)

5.1 Standard geometry [i](#)

Bond lengths and bond angles in the following residue types are not validated in this section: HEM, ACT, HW0, H4B, ZN, CAS

The Z score for a bond length (or angle) is the number of standard deviations the observed value is removed from the expected value. A bond length (or angle) with $|Z| > 5$ is considered an outlier worth inspection. RMSZ is the root-mean-square of all Z scores of the bond lengths (or angles).

Mol	Chain	Bond lengths		Bond angles	
		RMSZ	# $ Z > 5$	RMSZ	# $ Z > 5$
1	A	0.65	4/3303 (0.1%)	0.65	0/4497
1	B	0.63	3/3286 (0.1%)	0.63	0/4474
All	All	0.64	7/6589 (0.1%)	0.64	0/8971

All (7) bond length outliers are listed below:

Mol	Chain	Res	Type	Atoms	Z	Observed(Å)	Ideal(Å)
1	A	447	TRP	CD2-CE2	5.97	1.48	1.41
1	A	281	TRP	CD2-CE2	5.85	1.48	1.41
1	A	396	TRP	CD2-CE2	5.62	1.48	1.41
1	B	332	TRP	CD2-CE2	5.42	1.47	1.41
1	B	449	TRP	CD2-CE2	5.28	1.47	1.41
1	A	449	TRP	CD2-CE2	5.21	1.47	1.41
1	B	281	TRP	CD2-CE2	5.17	1.47	1.41

There are no bond angle outliers.

There are no chirality outliers.

There are no planarity outliers.

5.2 Too-close contacts [i](#)

In the following table, the Non-H and H(model) columns list the number of non-hydrogen atoms and hydrogen atoms in the chain respectively. The H(added) column lists the number of hydrogen atoms added and optimized by MolProbity. The Clashes column lists the number of clashes within the asymmetric unit, whereas Symm-Clashes lists symmetry-related clashes.

Mol	Chain	Non-H	H(model)	H(added)	Clashes	Symm-Clashes
1	A	3220	0	3127	26	0
1	B	3204	0	3109	24	0

Continued on next page...

Continued from previous page...

Mol	Chain	Non-H	H(model)	H(added)	Clashes	Symm-Clashes
2	A	43	0	30	3	0
2	B	43	0	30	5	0
3	A	17	0	15	2	0
3	B	17	0	15	1	0
4	A	27	0	31	2	0
4	B	27	0	31	2	0
5	A	8	0	6	1	0
5	B	8	0	6	0	0
6	B	1	0	0	0	0
7	A	152	0	0	1	0
7	B	147	0	0	0	0
All	All	6914	0	6400	51	0

The all-atom clashscore is defined as the number of clashes found per 1000 atoms (including hydrogen atoms). The all-atom clashscore for this structure is 4.

All (51) close contacts within the same asymmetric unit are listed below, sorted by their clash magnitude.

Atom-1	Atom-2	Interatomic distance (Å)	Clash overlap (Å)
1:A:384:CAS:SG	1:A:384:CAS:AS	2.53	1.27
1:B:384:CAS:SG	1:B:384:CAS:AS	2.56	1.23
2:B:500:HEM:HMC2	2:B:500:HEM:HBC2	1.57	0.84
1:A:240:ARG:HD3	1:A:298:PRO:HB3	1.73	0.70
1:A:384:CAS:AS	1:A:384:CAS:CB	3.00	0.70
1:A:100:ARG:HB3	1:B:87[B]:CYS:SG	2.33	0.68
1:B:236:ARG:HD2	1:B:242:ASP:OD1	1.94	0.68
1:B:281:TRP:HB2	1:B:304:LEU:HD21	1.81	0.61
1:B:358:TRP:H	2:B:500:HEM:HAB	1.68	0.59
1:A:246:TRP:HB2	1:A:294:LEU:HB3	1.83	0.59
2:B:500:HEM:HBC2	2:B:500:HEM:CMC	2.31	0.57
1:A:384:CAS:AS	1:A:384:CAS:HB2	2.65	0.57
1:A:102:LEU:HD11	1:B:71:PRO:HB3	1.88	0.56
1:B:99:ARG:HG2	1:B:100:ARG:HD2	1.88	0.55
1:B:71:PRO:HG2	1:B:84:ASP:HB3	1.87	0.55
1:B:233:PHE:HB3	1:B:234:PRO:CD	2.38	0.54
1:A:449:TRP:HA	3:A:600:H4B:N1	2.24	0.53
1:A:236:ARG:HG3	1:A:349:GLU:HB2	1.92	0.51
2:A:500:HEM:HBA2	4:A:800:HW0:H9	1.93	0.51
1:B:449:TRP:HA	3:B:600:H4B:N1	2.25	0.51
1:A:370:CYS:SG	1:A:378:LEU:HD13	2.52	0.50
1:A:68:PRO:HB2	1:A:70:PHE:HD2	1.78	0.48

Continued on next page...

Continued from previous page...

Atom-1	Atom-2	Interatomic distance (Å)	Clash overlap (Å)
1:A:338:VAL:HG23	4:A:800:HW0:H5	1.96	0.47
1:A:107:LEU:HD12	1:B:72:ARG:HH22	1.80	0.46
1:A:240:ARG:HD2	1:A:241:GLY:O	2.15	0.46
1:A:240:ARG:HD3	1:A:298:PRO:CB	2.42	0.46
1:B:99:ARG:HG2	1:B:100:ARG:CD	2.46	0.45
1:A:126:LEU:HD11	1:A:156:GLU:HA	1.98	0.45
1:B:74:LYS:HD2	1:B:81:ILE:HD11	1.97	0.45
2:B:500:HEM:HBA2	4:B:800:HW0:H9	1.98	0.45
1:A:378:LEU:HB2	7:A:2113:HOH:O	2.17	0.45
1:A:72:ARG:HB2	1:A:83:TYR:CE1	2.52	0.44
1:B:481:PRO:HD2	1:B:482:TRP:CE3	2.53	0.44
2:B:500:HEM:C4B	4:B:800:HW0:H3	2.53	0.44
1:B:366:THR:O	1:B:370:CYS:HB2	2.18	0.43
1:A:101:CYS:HB3	1:B:468:ASN:HB3	1.99	0.43
1:A:74:LYS:HD2	1:A:81:ILE:HD11	2.01	0.42
1:A:392:THR:HB	1:B:423:HIS:HB2	2.02	0.42
2:A:500:HEM:HMB3	5:A:860:ACT:H2	2.02	0.42
1:A:77:GLU:HG3	1:B:372:PRO:HG2	2.03	0.41
1:A:125:LEU:HD23	1:A:347:GLY:HA3	2.02	0.41
1:B:223:ARG:HB2	1:B:223:ARG:NH1	2.35	0.41
1:B:231:THR:O	1:B:353:ALA:HA	2.20	0.41
1:B:360:MET:HA	1:B:420:VAL:O	2.21	0.41
1:B:167:LEU:HG	1:B:348:LEU:HD12	2.03	0.41
1:B:223:ARG:HB2	1:B:223:ARG:CZ	2.50	0.41
1:A:455:SER:O	1:A:458:LEU:HB2	2.20	0.41
1:B:481:PRO:HD2	1:B:482:TRP:CZ3	2.56	0.41
1:A:390:ARG:HE	1:A:390:ARG:HB2	1.65	0.41
2:A:500:HEM:O1A	3:A:600:H4B:N3	2.48	0.41
1:A:372:PRO:HA	1:A:376:ASN:ND2	2.36	0.40

There are no symmetry-related clashes.

5.3 Torsion angles [i](#)

5.3.1 Protein backbone [i](#)

In the following table, the Percentiles column shows the percent Ramachandran outliers of the chain as a percentile score with respect to all X-ray entries followed by that with respect to entries of similar resolution.

The Analysed column shows the number of residues for which the backbone conformation was analysed, and the total number of residues.

Mol	Chain	Analysed	Favoured	Allowed	Outliers	Percentiles	
1	A	400/443 (90%)	392 (98%)	7 (2%)	1 (0%)	41	37
1	B	398/443 (90%)	390 (98%)	8 (2%)	0	100	100
All	All	798/886 (90%)	782 (98%)	15 (2%)	1 (0%)	51	53

All (1) Ramachandran outliers are listed below:

Mol	Chain	Res	Type
1	A	122	ALA

5.3.2 Protein sidechains [i](#)

In the following table, the Percentiles column shows the percent sidechain outliers of the chain as a percentile score with respect to all X-ray entries followed by that with respect to entries of similar resolution.

The Analysed column shows the number of residues for which the sidechain conformation was analysed, and the total number of residues.

Mol	Chain	Analysed	Rotameric	Outliers	Percentiles	
1	A	343/375 (92%)	330 (96%)	13 (4%)	33	31
1	B	342/375 (91%)	325 (95%)	17 (5%)	24	21
All	All	685/750 (91%)	655 (96%)	30 (4%)	28	25

All (30) residues with a non-rotameric sidechain are listed below:

Mol	Chain	Res	Type
1	A	69	LYS
1	A	92	GLN
1	A	100	ARG
1	A	102	LEU
1	A	125	LEU
1	A	154	GLU
1	A	236	ARG
1	A	293	LEU
1	A	294	LEU
1	A	328	LEU
1	A	378	LEU
1	A	416	LYS
1	A	458	LEU
1	B	69	LYS
1	B	81	ILE

Continued on next page...

Continued from previous page...

Mol	Chain	Res	Type
1	B	100	ARG
1	B	102	LEU
1	B	105	LEU
1	B	124	GLN
1	B	127	SER
1	B	149	GLU
1	B	223	ARG
1	B	225	ASN
1	B	259	GLN
1	B	323	GLU
1	B	330	LEU
1	B	378	LEU
1	B	389	THR
1	B	391	THR
1	B	458	LEU

Sometimes sidechains can be flipped to improve hydrogen bonding and reduce clashes. All (12) such sidechains are listed below:

Mol	Chain	Res	Type
1	A	146	GLN
1	A	166	HIS
1	A	191	GLN
1	A	376	ASN
1	A	413	GLN
1	A	468	ASN
1	B	178	GLN
1	B	191	GLN
1	B	222	ASN
1	B	225	ASN
1	B	376	ASN
1	B	405	ASN

5.3.3 RNA [i](#)

There are no RNA molecules in this entry.

5.4 Non-standard residues in protein, DNA, RNA chains [i](#)

2 non-standard protein/DNA/RNA residues are modelled in this entry.

In the following table, the Counts columns list the number of bonds (or angles) for which Mogul

statistics could be retrieved, the number of bonds (or angles) that are observed in the model and the number of bonds (or angles) that are defined in the Chemical Component Dictionary. The Link column lists molecule types, if any, to which the group is linked. The Z score for a bond length (or angle) is the number of standard deviations the observed value is removed from the expected value. A bond length (or angle) with $|Z| > 2$ is considered an outlier worth inspection. RMSZ is the root-mean-square of all Z scores of the bond lengths (or angles).

Mol	Type	Chain	Res	Link	Bond lengths			Bond angles		
					Counts	RMSZ	# $ Z > 2$	Counts	RMSZ	# $ Z > 2$
1	CAS	A	384	1	5,8,9	1.12	0	1,9,11	0.21	0
1	CAS	B	384	1	5,8,9	1.22	0	1,9,11	0.11	0

In the following table, the Chirals column lists the number of chiral outliers, the number of chiral centers analysed, the number of these observed in the model and the number defined in the Chemical Component Dictionary. Similar counts are reported in the Torsion and Rings columns. '-' means no outliers of that kind were identified.

Mol	Type	Chain	Res	Link	Chirals	Torsions	Rings
1	CAS	A	384	1	-	0/0/7/9	-
1	CAS	B	384	1	-	0/0/7/9	-

There are no bond length outliers.

There are no bond angle outliers.

There are no chirality outliers.

There are no torsion outliers.

There are no ring outliers.

2 monomers are involved in 4 short contacts:

Mol	Chain	Res	Type	Clashes	Symm-Clashes
1	A	384	CAS	3	0
1	B	384	CAS	1	0

5.5 Carbohydrates [i](#)

There are no monosaccharides in this entry.

5.6 Ligand geometry [i](#)

Of 11 ligands modelled in this entry, 1 is monoatomic - leaving 10 for Mogul analysis.

In the following table, the Counts columns list the number of bonds (or angles) for which Mogul statistics could be retrieved, the number of bonds (or angles) that are observed in the model and

the number of bonds (or angles) that are defined in the Chemical Component Dictionary. The Link column lists molecule types, if any, to which the group is linked. The Z score for a bond length (or angle) is the number of standard deviations the observed value is removed from the expected value. A bond length (or angle) with $|Z| > 2$ is considered an outlier worth inspection. RMSZ is the root-mean-square of all Z scores of the bond lengths (or angles).

Mol	Type	Chain	Res	Link	Bond lengths			Bond angles		
					Counts	RMSZ	# Z > 2	Counts	RMSZ	# Z > 2
3	H4B	B	600	-	16,18,18	0.93	0	11,26,26	2.52	6 (54%)
5	ACT	A	860	-	3,3,3	0.82	0	3,3,3	0.58	0
5	ACT	A	861	-	3,3,3	0.77	0	3,3,3	0.84	0
5	ACT	B	861	-	3,3,3	0.73	0	3,3,3	0.99	0
4	HW0	A	800	-	28,29,29	0.72	0	32,38,38	2.07	8 (25%)
5	ACT	B	860	-	3,3,3	0.72	0	3,3,3	0.88	0
2	HEM	A	500	1	41,50,50	2.43	16 (39%)	45,82,82	3.31	22 (48%)
2	HEM	B	500	1	41,50,50	2.35	14 (34%)	45,82,82	3.27	23 (51%)
4	HW0	B	800	-	28,29,29	0.70	0	32,38,38	1.88	8 (25%)
3	H4B	A	600	-	16,18,18	0.76	0	11,26,26	2.81	6 (54%)

In the following table, the Chirals column lists the number of chiral outliers, the number of chiral centers analysed, the number of these observed in the model and the number defined in the Chemical Component Dictionary. Similar counts are reported in the Torsion and Rings columns. '-' means no outliers of that kind were identified.

Mol	Type	Chain	Res	Link	Chirals	Torsions	Rings
3	H4B	B	600	-	-	0/8/17/17	0/2/2/2
4	HW0	A	800	-	-	0/13/23/23	0/3/3/3
2	HEM	A	500	1	-	0/12/54/54	-
2	HEM	B	500	1	-	2/12/54/54	-
4	HW0	B	800	-	-	1/13/23/23	0/3/3/3
3	H4B	A	600	-	-	0/8/17/17	0/2/2/2

All (30) bond length outliers are listed below:

Mol	Chain	Res	Type	Atoms	Z	Observed(Å)	Ideal(Å)
2	A	500	HEM	C3C-C2C	6.58	1.49	1.40
2	B	500	HEM	C3C-C2C	5.49	1.48	1.40
2	A	500	HEM	C4A-NA	4.87	1.46	1.36
2	A	500	HEM	C3D-C2D	4.86	1.47	1.36
2	B	500	HEM	C4A-NA	4.84	1.46	1.36
2	B	500	HEM	C3D-C2D	4.48	1.46	1.36
2	A	500	HEM	C3B-C2B	4.22	1.45	1.37
2	A	500	HEM	C1A-NA	4.06	1.44	1.36

Continued on next page...

Continued from previous page...

Mol	Chain	Res	Type	Atoms	Z	Observed(Å)	Ideal(Å)
2	B	500	HEM	C1A-NA	4.00	1.44	1.36
2	B	500	HEM	CHB-C1B	3.99	1.45	1.35
2	B	500	HEM	C3B-C2B	3.94	1.45	1.37
2	A	500	HEM	CHA-C4D	3.78	1.44	1.35
2	A	500	HEM	C2A-C3A	3.56	1.48	1.37
2	B	500	HEM	C1B-NB	-3.55	1.34	1.40
2	A	500	HEM	C1B-NB	-3.51	1.34	1.40
2	B	500	HEM	CHA-C4D	3.51	1.44	1.35
2	B	500	HEM	C2A-C3A	3.33	1.47	1.37
2	B	500	HEM	C2C-C1C	3.24	1.49	1.42
2	A	500	HEM	CHB-C1B	2.98	1.42	1.35
2	A	500	HEM	C2C-C1C	2.91	1.49	1.42
2	A	500	HEM	C4D-ND	-2.83	1.35	1.40
2	A	500	HEM	FE-NB	2.77	2.10	1.96
2	B	500	HEM	FE-NB	2.73	2.10	1.96
2	B	500	HEM	FE-ND	2.67	2.10	1.96
2	B	500	HEM	C4D-ND	-2.63	1.35	1.40
2	A	500	HEM	C1D-ND	-2.42	1.33	1.38
2	A	500	HEM	FE-ND	2.28	2.08	1.96
2	A	500	HEM	C1D-C2D	2.23	1.48	1.44
2	A	500	HEM	C4D-C3D	2.11	1.48	1.45
2	B	500	HEM	C1D-C2D	2.02	1.48	1.44

All (73) bond angle outliers are listed below:

Mol	Chain	Res	Type	Atoms	Z	Observed(°)	Ideal(°)
2	A	500	HEM	C2B-C1B-NB	8.77	120.23	109.84
2	A	500	HEM	C3B-C2B-C1B	-8.74	100.00	106.49
2	B	500	HEM	C3B-C2B-C1B	-8.49	100.19	106.49
2	B	500	HEM	C2B-C1B-NB	7.40	118.61	109.84
2	B	500	HEM	C2D-C1D-ND	7.33	118.66	109.88
2	A	500	HEM	C2D-C1D-ND	7.16	118.46	109.88
2	B	500	HEM	C3D-C4D-ND	6.78	117.71	110.17
2	B	500	HEM	CBA-CAA-C2A	-6.76	101.08	112.62
4	A	800	HW0	C02-N01-C06	6.12	122.73	118.10
4	B	800	HW0	C02-N01-C06	6.04	122.67	118.10
2	A	500	HEM	CBA-CAA-C2A	-6.00	102.38	112.62
2	A	500	HEM	C3D-C4D-ND	5.89	116.72	110.17
4	A	800	HW0	C22-N21-C26	5.81	122.50	118.10
2	A	500	HEM	C1D-C2D-C3D	-5.76	100.90	106.96
2	B	500	HEM	C1D-C2D-C3D	-5.51	101.17	106.96
3	A	600	H4B	C8A-C4A-C4	5.38	119.35	114.57

Continued on next page...

Continued from previous page...

Mol	Chain	Res	Type	Atoms	Z	Observed(°)	Ideal(°)
2	B	500	HEM	C4D-ND-C1D	-5.18	99.72	105.07
2	A	500	HEM	C1B-NB-C4B	-5.15	99.76	105.07
2	B	500	HEM	CHD-C1D-C2D	-4.40	118.11	124.98
2	A	500	HEM	C4A-C3A-C2A	-3.99	104.22	107.00
2	A	500	HEM	C4D-ND-C1D	-3.84	101.11	105.07
3	B	600	H4B	C4-C4A-N5	3.84	122.34	119.12
3	A	600	H4B	C4-C4A-N5	3.82	122.33	119.12
2	A	500	HEM	C4B-C3B-C2B	-3.81	104.09	107.11
3	B	600	H4B	C8A-C4A-C4	3.73	117.88	114.57
3	A	600	H4B	C2-N3-C4	3.71	121.83	115.93
4	A	800	HW0	C2'-N1'-C5'	3.69	114.12	105.42
2	B	500	HEM	C1B-NB-C4B	-3.56	101.40	105.07
4	B	800	HW0	C2'-N1'-C5'	3.52	113.73	105.42
3	B	600	H4B	N1-C2-N3	-3.52	119.91	125.42
2	A	500	HEM	CHB-C1B-C2B	-3.48	117.08	126.72
2	A	500	HEM	CHD-C1D-C2D	-3.35	119.75	124.98
2	B	500	HEM	C4A-C3A-C2A	-3.34	104.67	107.00
4	B	800	HW0	C22-N21-C26	3.30	120.60	118.10
2	A	500	HEM	CHC-C4B-C3B	-3.29	119.53	124.57
2	B	500	HEM	CHA-C4D-C3D	-3.23	119.27	125.33
3	A	600	H4B	N1-C2-N3	-3.20	120.39	125.42
2	B	500	HEM	C4B-C3B-C2B	-3.07	104.67	107.11
3	B	600	H4B	C2-N3-C4	2.99	120.69	115.93
2	B	500	HEM	CHB-C1B-NB	-2.99	120.68	124.38
2	A	500	HEM	C4D-C3D-C2D	-2.90	102.67	106.90
3	B	600	H4B	C2-N1-C8A	2.89	121.01	114.54
2	B	500	HEM	C4D-C3D-C2D	-2.88	102.70	106.90
2	B	500	HEM	CMD-C2D-C1D	2.87	129.41	125.04
2	A	500	HEM	CMD-C2D-C1D	2.73	129.20	125.04
4	A	800	HW0	C05-C06-N01	-2.72	120.02	122.90
4	A	800	HW0	C04-C05-C06	-2.71	118.54	120.32
4	B	800	HW0	C05-C06-N01	-2.71	120.03	122.90
2	A	500	HEM	CMB-C2B-C1B	2.68	129.13	125.04
3	A	600	H4B	C2-N1-C8A	2.58	120.31	114.54
4	A	800	HW0	C4'-C5'-N1'	-2.56	100.90	105.20
2	A	500	HEM	CHD-C1D-ND	-2.47	121.75	124.43
2	B	500	HEM	CAD-C3D-C4D	2.45	128.95	124.66
2	B	500	HEM	O1D-CGD-CBD	-2.42	115.32	123.08
3	A	600	H4B	N2-C2-N1	2.37	120.95	117.25
2	B	500	HEM	C4B-CHC-C1C	2.37	125.69	122.56
4	B	800	HW0	C4'-C5'-N1'	-2.35	101.27	105.20
2	A	500	HEM	O1D-CGD-CBD	-2.33	115.61	123.08

Continued on next page...

Continued from previous page...

Mol	Chain	Res	Type	Atoms	Z	Observed(°)	Ideal(°)
3	B	600	H4B	N2-C2-N3	2.31	120.85	117.25
2	B	500	HEM	CHC-C4B-C3B	-2.28	121.08	124.57
2	B	500	HEM	CBD-CAD-C3D	-2.27	106.32	112.63
2	A	500	HEM	CHA-C4D-C3D	-2.27	121.07	125.33
2	B	500	HEM	O2D-CGD-CBD	2.26	121.30	114.03
2	A	500	HEM	CBD-CAD-C3D	-2.25	106.37	112.63
4	B	800	HW0	C04-C05-C06	-2.19	118.88	120.32
2	B	500	HEM	CHB-C1B-C2B	-2.18	120.68	126.72
2	A	500	HEM	CAD-C3D-C4D	2.18	128.46	124.66
2	A	500	HEM	CHA-C4D-ND	-2.17	121.69	124.38
2	B	500	HEM	CMB-C2B-C1B	2.17	128.34	125.04
4	B	800	HW0	C25-C24-C23	-2.13	117.22	120.25
4	B	800	HW0	C14-C26-N21	2.13	119.12	115.95
4	A	800	HW0	C25-C26-N21	-2.09	119.75	122.41
4	A	800	HW0	C06-C08-C3'	-2.08	108.71	115.55

There are no chirality outliers.

All (3) torsion outliers are listed below:

Mol	Chain	Res	Type	Atoms
2	B	500	HEM	C2B-C3B-CAB-CBB
2	B	500	HEM	C4B-C3B-CAB-CBB
4	B	800	HW0	O09-C10-C11-C12

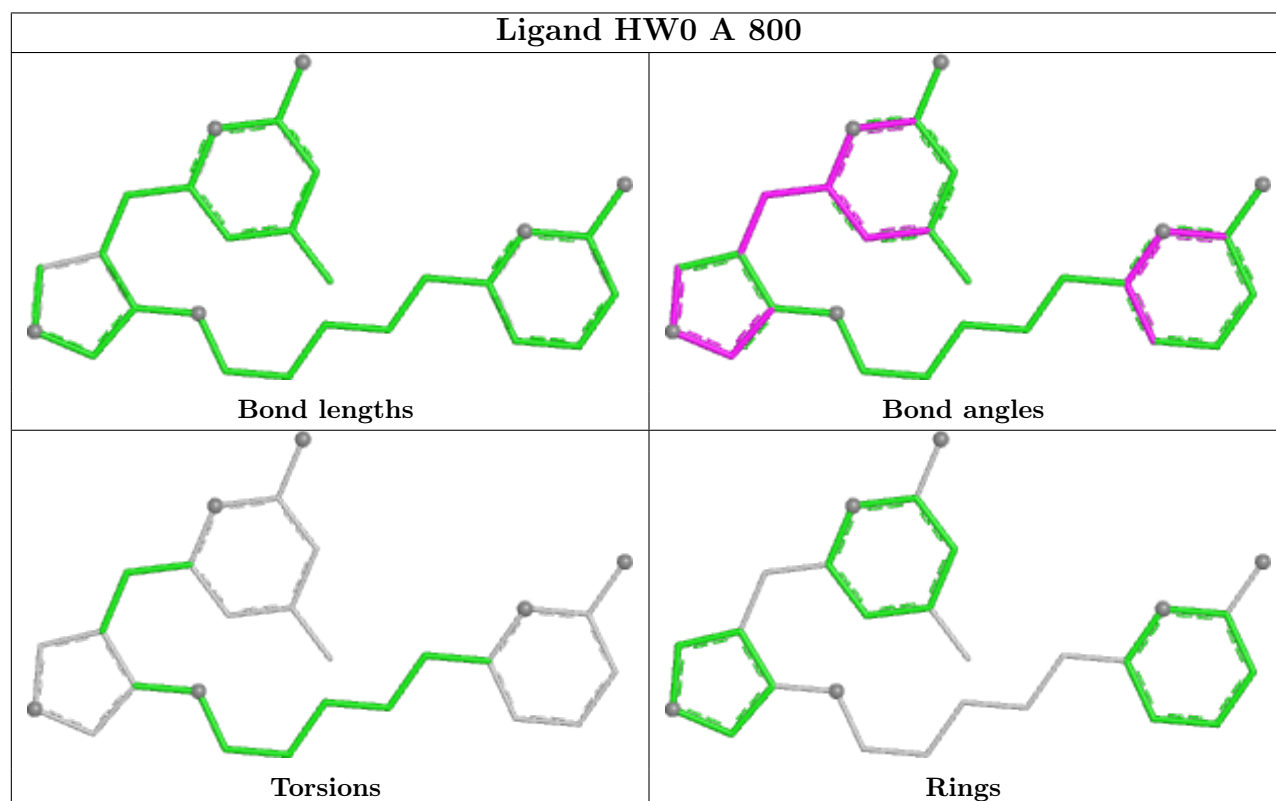
There are no ring outliers.

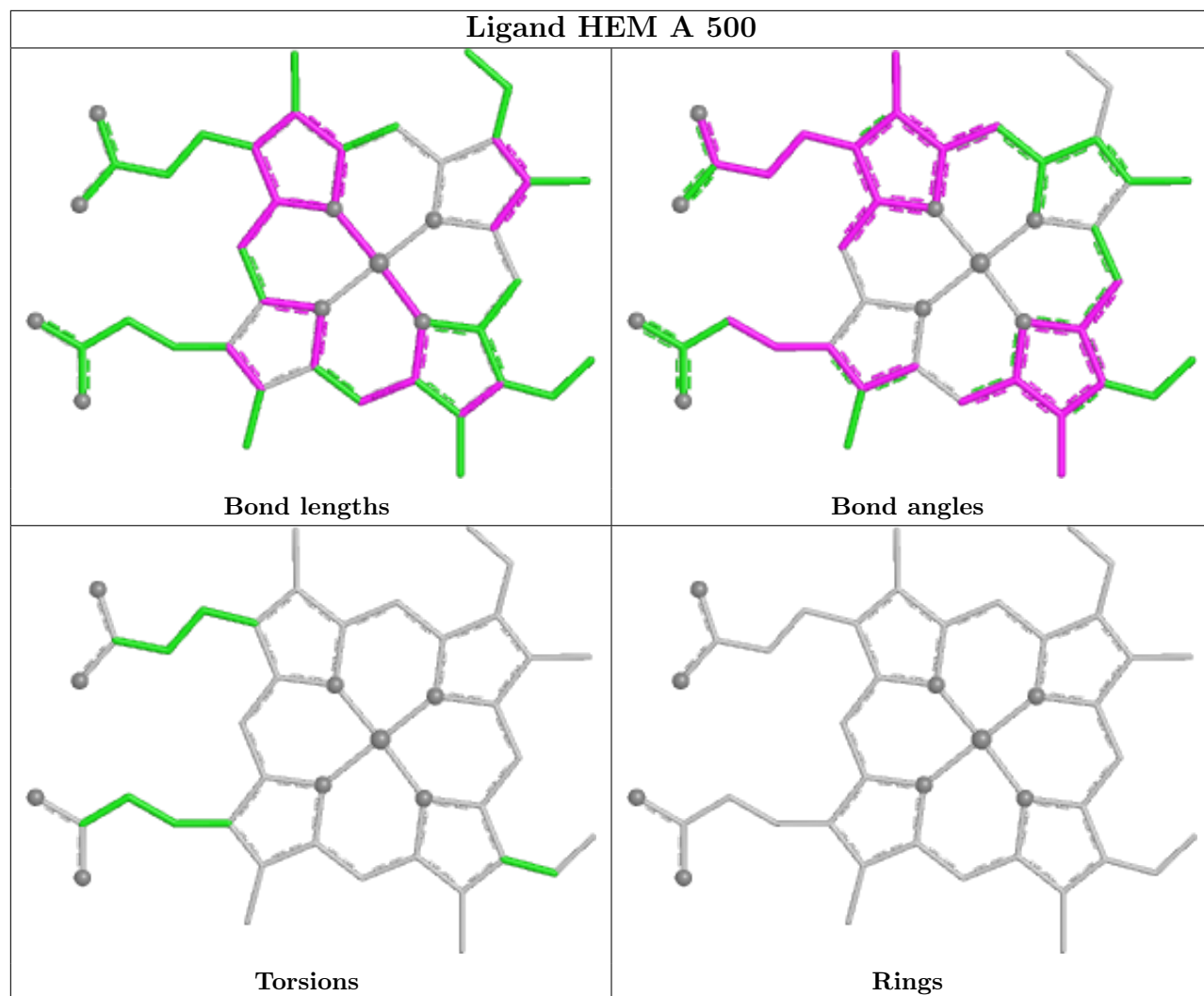
7 monomers are involved in 11 short contacts:

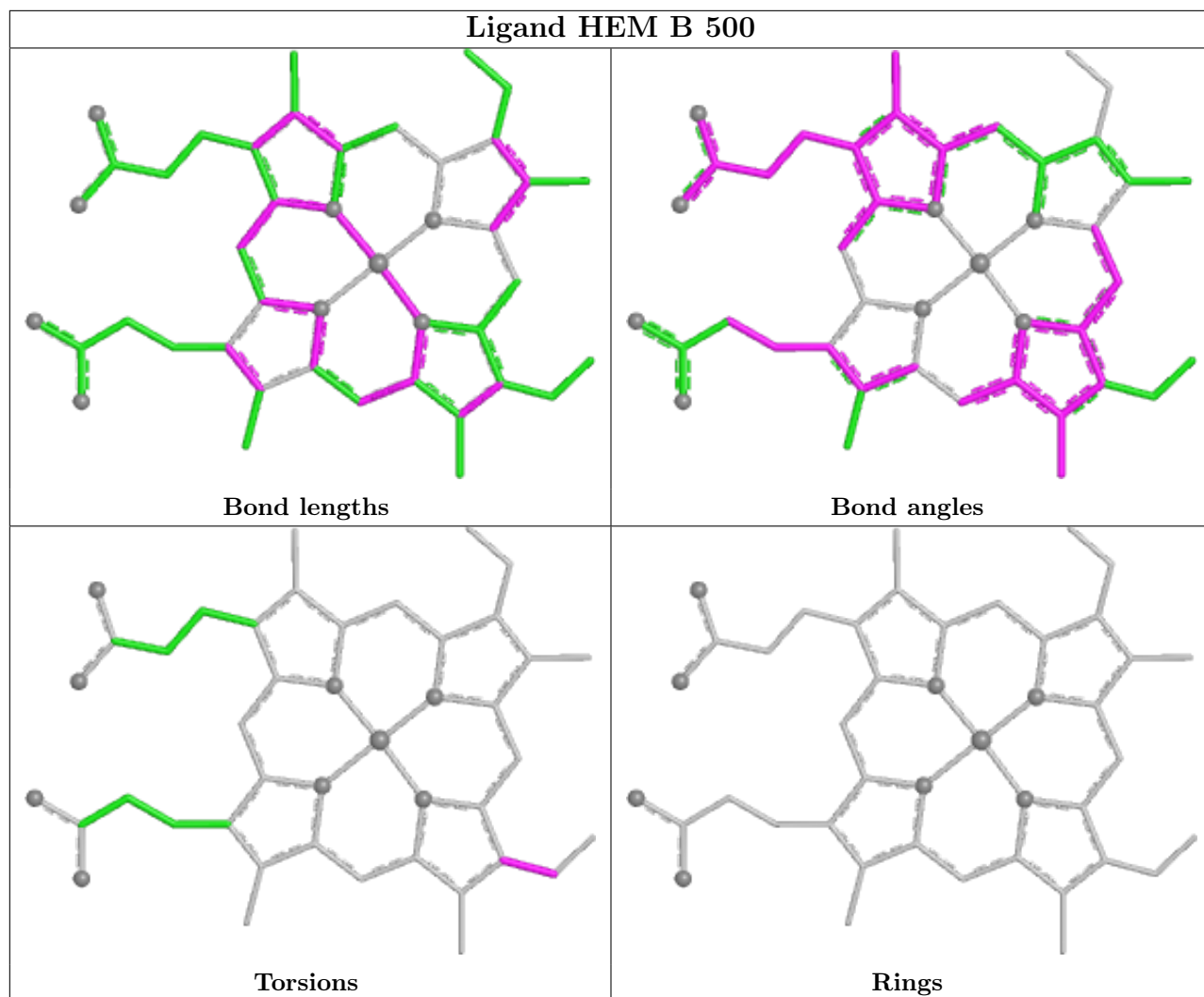
Mol	Chain	Res	Type	Clashes	Symm-Clashes
3	B	600	H4B	1	0
5	A	860	ACT	1	0
4	A	800	HW0	2	0
2	A	500	HEM	3	0
2	B	500	HEM	5	0
4	B	800	HW0	2	0
3	A	600	H4B	2	0

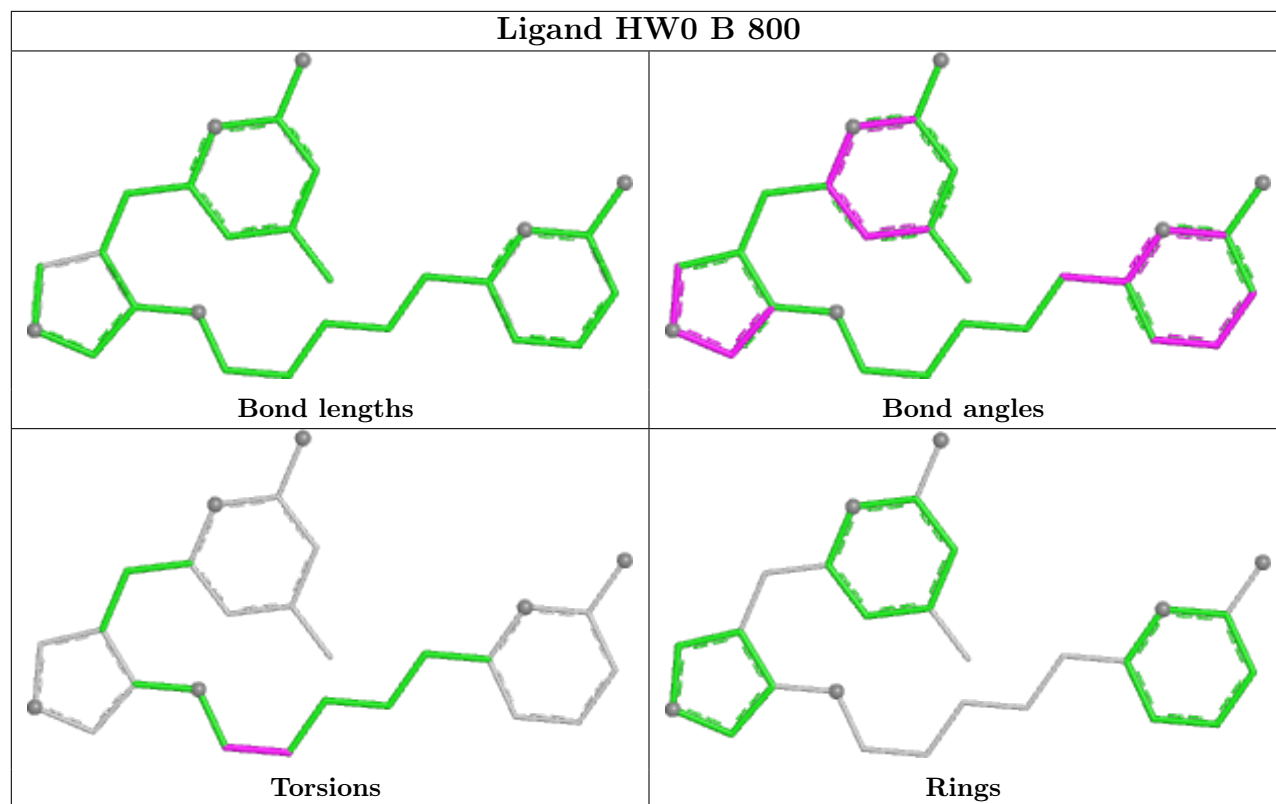
The following is a two-dimensional graphical depiction of Mogul quality analysis of bond lengths, bond angles, torsion angles, and ring geometry for all instances of the Ligand of Interest. In addition, ligands with molecular weight > 250 and outliers as shown on the validation Tables will also be included. For torsion angles, if less than 5% of the Mogul distribution of torsion angles is within 10 degrees of the torsion angle in question, then that torsion angle is considered an outlier. Any bond that is central to one or more torsion angles identified as an outlier by Mogul will be

highlighted in the graph. For rings, the root-mean-square deviation (RMSD) between the ring in question and similar rings identified by Mogul is calculated over all ring torsion angles. If the average RMSD is greater than 60 degrees and the minimal RMSD between the ring in question and any Mogul-identified rings is also greater than 60 degrees, then that ring is considered an outlier. The outliers are highlighted in purple. The color gray indicates Mogul did not find sufficient equivalents in the CSD to analyse the geometry.









5.7 Other polymers [i](#)

There are no such residues in this entry.

5.8 Polymer linkage issues [i](#)

There are no chain breaks in this entry.

6 Fit of model and data

6.1 Protein, DNA and RNA chains

In the following table, the column labelled ‘#RSRZ > 2’ contains the number (and percentage) of RSRZ outliers, followed by percent RSRZ outliers for the chain as percentile scores relative to all X-ray entries and entries of similar resolution. The OWAB column contains the minimum, median, 95th percentile and maximum values of the occupancy-weighted average B-factor per residue. The column labelled ‘Q < 0.9’ lists the number of (and percentage) of residues with an average occupancy less than 0.9.

Mol	Chain	Analysed	<RSRZ>	#RSRZ>2	OWAB(Å ²)	Q<0.9
1	A	403/443 (90%)	0.54	43 (10%) 6 8	32, 45, 77, 97	0
1	B	401/443 (90%)	0.44	29 (7%) 15 21	33, 48, 80, 112	0
All	All	804/886 (90%)	0.49	72 (8%) 9 14	32, 46, 78, 112	0

All (72) RSRZ outliers are listed below:

Mol	Chain	Res	Type	RSRZ
1	A	123	GLU	5.7
1	A	67	GLY	5.5
1	A	98	PRO	5.5
1	A	121	PRO	5.4
1	B	259	GLN	5.4
1	A	259	GLN	5.4
1	A	69	LYS	5.4
1	A	99	ARG	5.3
1	B	99	ARG	5.1
1	A	160	ALA	5.0
1	B	121	PRO	4.6
1	A	91	GLN	4.6
1	A	122	ALA	4.5
1	B	239	GLY	4.4
1	A	238	PRO	4.4
1	A	239	GLY	4.1
1	A	94	GLY	4.0
1	A	92	GLN	4.0
1	B	122	ALA	3.9
1	B	92	GLN	3.9
1	A	124	GLN	3.8
1	A	126	LEU	3.8
1	B	93	ASP	3.7
1	A	95	PRO	3.6

Continued on next page...

Continued from previous page...

Mol	Chain	Res	Type	RSRZ
1	B	146	GLN	3.6
1	B	97	THR	3.5
1	B	108	PRO	3.5
1	A	261	GLY	3.5
1	B	98	PRO	3.5
1	A	338	VAL	3.5
1	A	97	THR	3.4
1	A	153	GLN	3.3
1	A	156	GLU	3.3
1	B	94	GLY	3.3
1	A	93	ASP	3.2
1	B	91	GLN	3.2
1	B	123	GLU	3.2
1	B	260	ASP	3.2
1	A	260	ASP	3.1
1	A	230	ILE	3.1
1	B	70	PHE	3.0
1	B	100	ARG	3.0
1	A	102	LEU	3.0
1	A	414	LEU	2.9
1	A	337	ALA	2.8
1	B	223	ARG	2.8
1	A	68	PRO	2.8
1	A	96	CYS	2.8
1	A	257	ARG	2.8
1	A	130	ARG	2.7
1	A	108	PRO	2.6
1	B	141	LYS	2.6
1	A	355	PHE	2.6
1	B	258	GLN	2.6
1	B	261	GLY	2.5
1	A	449	TRP	2.4
1	B	69	LYS	2.4
1	A	159	VAL	2.3
1	B	140	ILE	2.3
1	B	96	CYS	2.3
1	A	127	SER	2.3
1	B	323	GLU	2.2
1	A	258	GLN	2.2
1	B	105	LEU	2.2
1	A	125	LEU	2.1
1	A	146	GLN	2.1

Continued on next page...

Continued from previous page...

Mol	Chain	Res	Type	RSRZ
1	A	223	ARG	2.1
1	A	311	LEU	2.1
1	B	142	ARG	2.1
1	B	95	PRO	2.1
1	B	338	VAL	2.0
1	A	101	CYS	2.0

6.2 Non-standard residues in protein, DNA, RNA chains [i](#)

In the following table, the Atoms column lists the number of modelled atoms in the group and the number defined in the chemical component dictionary. The B-factors column lists the minimum, median, 95th percentile and maximum values of B factors of atoms in the group. The column labelled 'Q< 0.9' lists the number of atoms with occupancy less than 0.9.

Mol	Type	Chain	Res	Atoms	RSCC	RSR	B-factors(Å ²)	Q<0.9
1	CAS	B	384	9/10	0.96	0.08	53,55,75,80	0
1	CAS	A	384	9/10	0.97	0.10	44,45,61,61	0

6.3 Carbohydrates [i](#)

There are no monosaccharides in this entry.

6.4 Ligands [i](#)

In the following table, the Atoms column lists the number of modelled atoms in the group and the number defined in the chemical component dictionary. The B-factors column lists the minimum, median, 95th percentile and maximum values of B factors of atoms in the group. The column labelled 'Q< 0.9' lists the number of atoms with occupancy less than 0.9.

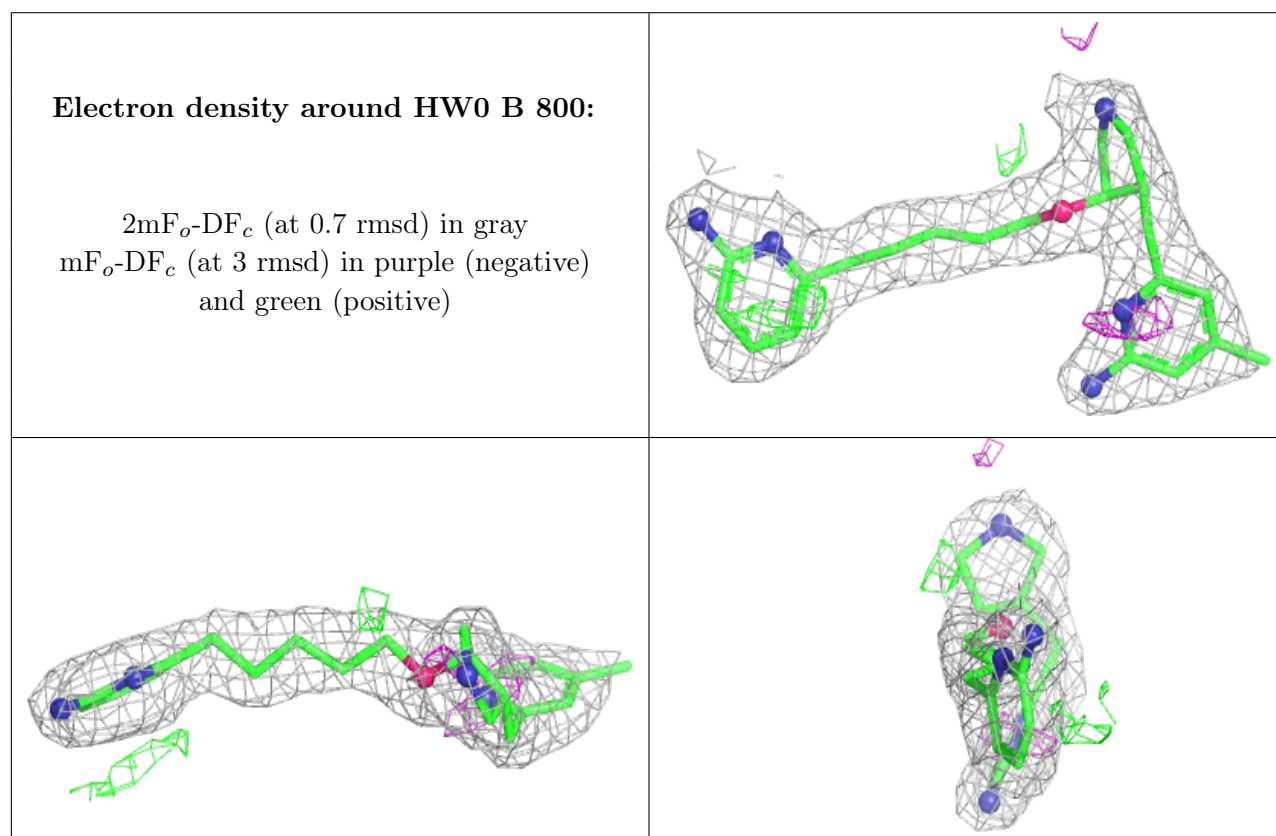
Mol	Type	Chain	Res	Atoms	RSCC	RSR	B-factors(Å ²)	Q<0.9
4	HW0	B	800	27/27	0.93	0.20	38,43,53,55	0
4	HW0	A	800	27/27	0.94	0.22	36,46,58,59	0
5	ACT	A	861	4/4	0.95	0.16	37,37,41,43	0
5	ACT	A	860	4/4	0.96	0.18	53,57,58,59	0
5	ACT	B	861	4/4	0.96	0.15	43,44,47,47	0
5	ACT	B	860	4/4	0.97	0.26	54,56,60,61	0
2	HEM	A	500	43/43	0.98	0.20	28,32,40,43	0
3	H4B	A	600	17/17	0.98	0.15	36,40,45,48	0
3	H4B	B	600	17/17	0.98	0.16	35,40,43,43	0
2	HEM	B	500	43/43	0.99	0.15	32,35,43,50	0

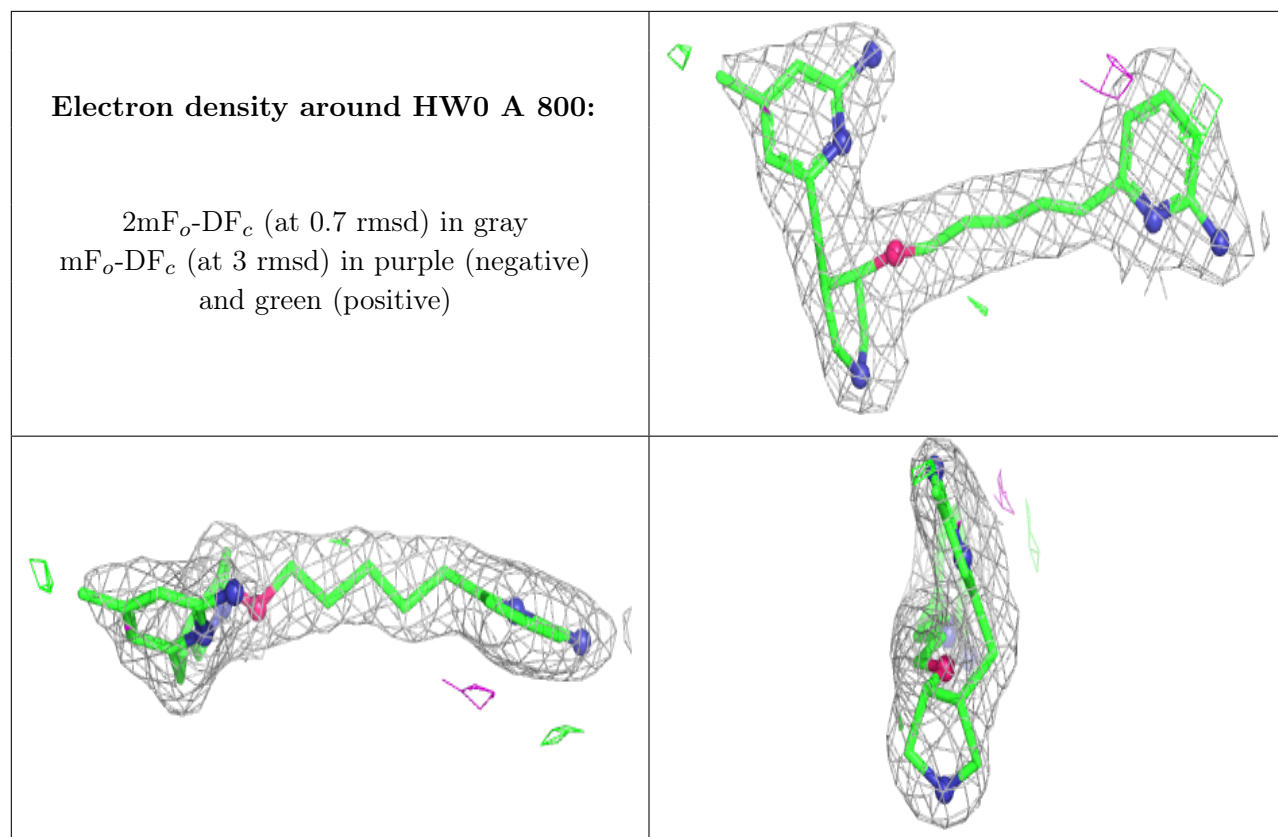
Continued on next page...

Continued from previous page...

Mol	Type	Chain	Res	Atoms	RSCC	RSR	B-factors(\AA^2)	Q<0.9
6	ZN	B	1483	1/1	0.99	0.08	61,61,61,61	0

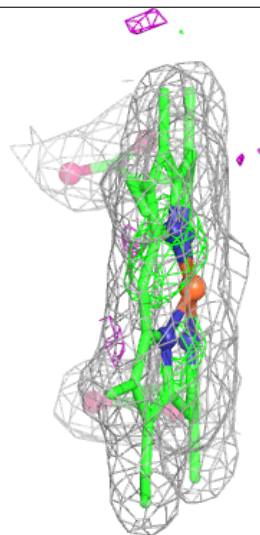
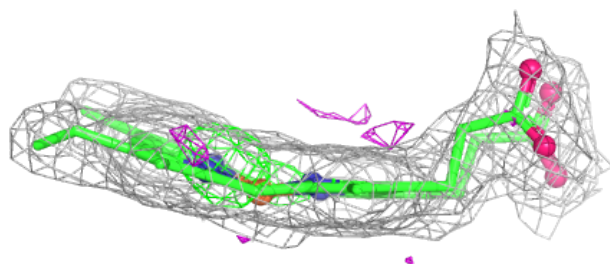
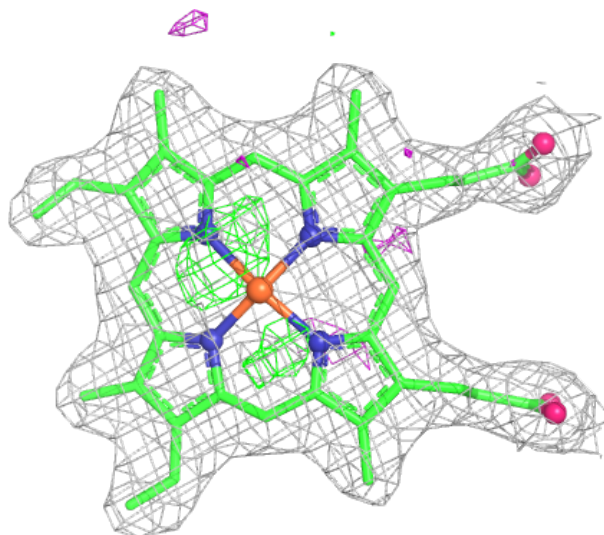
The following is a graphical depiction of the model fit to experimental electron density of all instances of the Ligand of Interest. In addition, ligands with molecular weight > 250 and outliers as shown on the geometry validation Tables will also be included. Each fit is shown from different orientation to approximate a three-dimensional view.

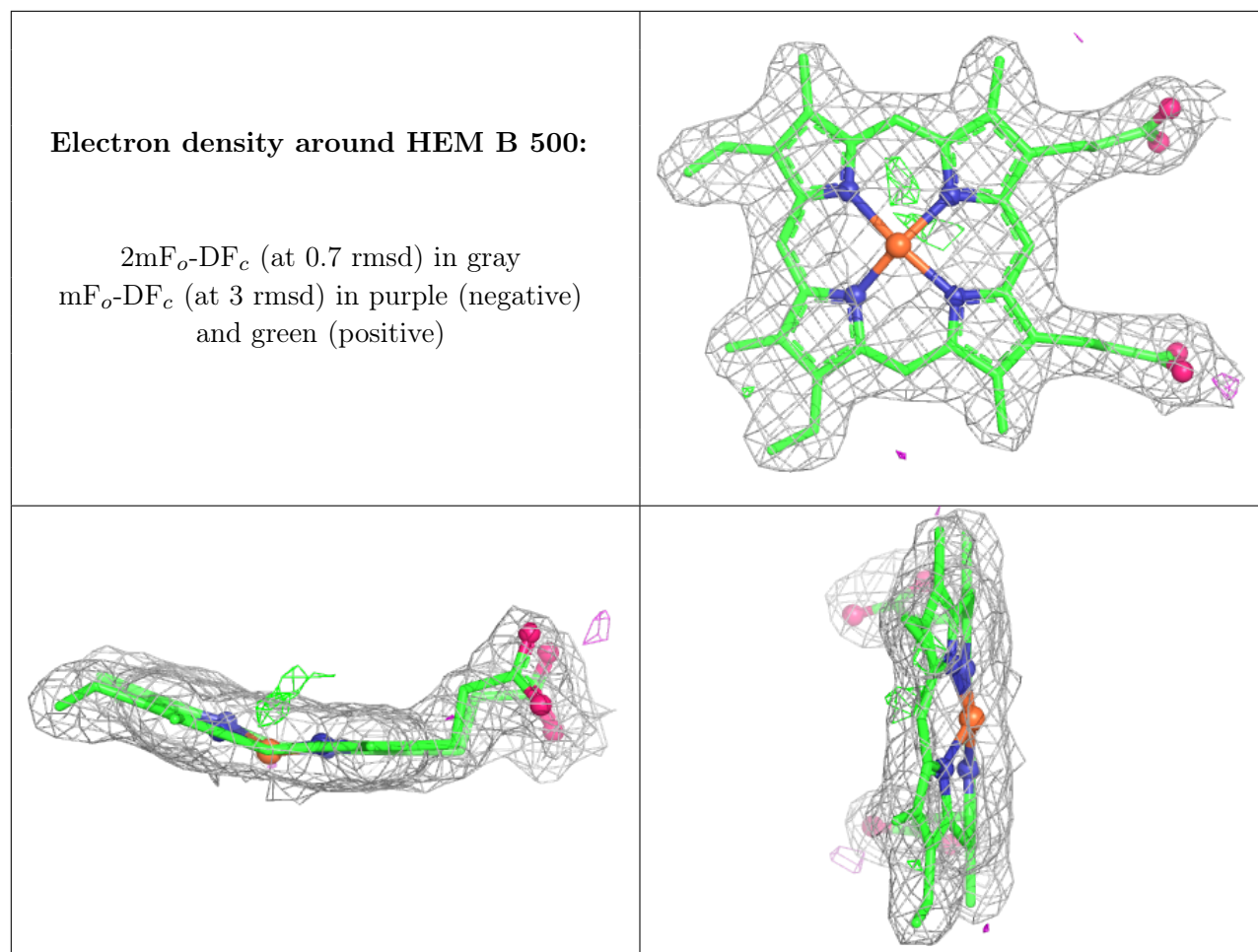




Electron density around HEM A 500:

$2mF_o-DF_c$ (at 0.7 rmsd) in gray
 mF_o-DF_c (at 3 rmsd) in purple (negative)
and green (positive)





6.5 Other polymers [i](#)

There are no such residues in this entry.