



Full wwPDB X-ray Structure Validation Report ⓘ

Jun 12, 2024 – 08:13 PM EDT

PDB ID : 4A7Y
Title : Active site metal depleted aldose-2-epimerase
Authors : Claesson, M.; Lindqvist, Y.; Madrid, S.; Sandalova, T.; Fiskesund, R.; Yu, S.;
Schneider, G.
Deposited on : 2011-11-15
Resolution : 2.80 Å (reported)

This is a Full wwPDB X-ray Structure Validation Report for a publicly released PDB entry.

We welcome your comments at validation@mail.wwpdb.org

A user guide is available at

<https://www.wwpdb.org/validation/2017/XrayValidationReportHelp>

with specific help available everywhere you see the ⓘ symbol.

The types of validation reports are described at

<http://www.wwpdb.org/validation/2017/FAQs#types>.

The following versions of software and data (see [references ⓘ](#)) were used in the production of this report:

MolProbity : 4.02b-467
Mogul : 2022.3.0, CSD as543be (2022)
Xtriage (Phenix) : 1.20.1
EDS : 2.36.2
Percentile statistics : 20191225.v01 (using entries in the PDB archive December 25th 2019)
Refmac : 5.8.0158
CCP4 : 7.0.044 (Gargrove)
Ideal geometry (proteins) : Engh & Huber (2001)
Ideal geometry (DNA, RNA) : Parkinson et al. (1996)
Validation Pipeline (wwPDB-VP) : 2.36.2

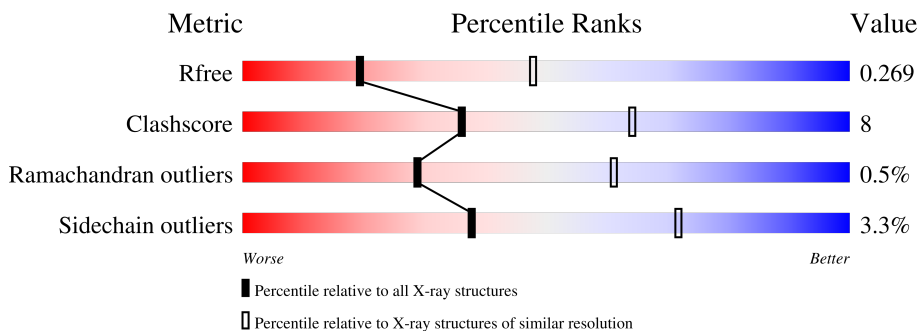
1 Overall quality at a glance

The following experimental techniques were used to determine the structure:

X-RAY DIFFRACTION

The reported resolution of this entry is 2.80 Å.

Percentile scores (ranging between 0-100) for global validation metrics of the entry are shown in the following graphic. The table shows the number of entries on which the scores are based.



Metric	Whole archive (#Entries)	Similar resolution (#Entries, resolution range(Å))
R_{free}	130704	3140 (2.80-2.80)
Clashscore	141614	3569 (2.80-2.80)
Ramachandran outliers	138981	3498 (2.80-2.80)
Sidechain outliers	138945	3500 (2.80-2.80)

The table below summarises the geometric issues observed across the polymeric chains and their fit to the electron density. The red, orange, yellow and green segments of the lower bar indicate the fraction of residues that contain outliers for ≥ 3 , 2, 1 and 0 types of geometric quality criteria respectively. A grey segment represents the fraction of residues that are not modelled. The numeric value for each fraction is indicated below the corresponding segment, with a dot representing fractions $\leq 5\%$.

Mol	Chain	Length	Quality of chain
1	A	900	77% 20% ..

2 Entry composition [i](#)

There are 5 unique types of molecules in this entry. The entry contains 6882 atoms, of which 0 are hydrogens and 0 are deuteriums.

In the tables below, the ZeroOcc column contains the number of atoms modelled with zero occupancy, the AltConf column contains the number of residues with at least one atom in alternate conformation and the Trace column contains the number of residues modelled with at most 2 atoms.

- Molecule 1 is a protein called ALDOS-2-ULOSE DEHYDRATASE.

Mol	Chain	Residues	Atoms					ZeroOcc	AltConf	Trace
			Total	C	N	O	S			
1	A	880	6796	4312	1184	1268	32	0	0	0

There are 3 discrepancies between the modelled and reference sequences:

Chain	Residue	Modelled	Actual	Comment	Reference
A	?	-	THR	deletion	UNP P84193
A	?	-	GLY	deletion	UNP P84193
A	?	-	HIS	deletion	UNP P84193

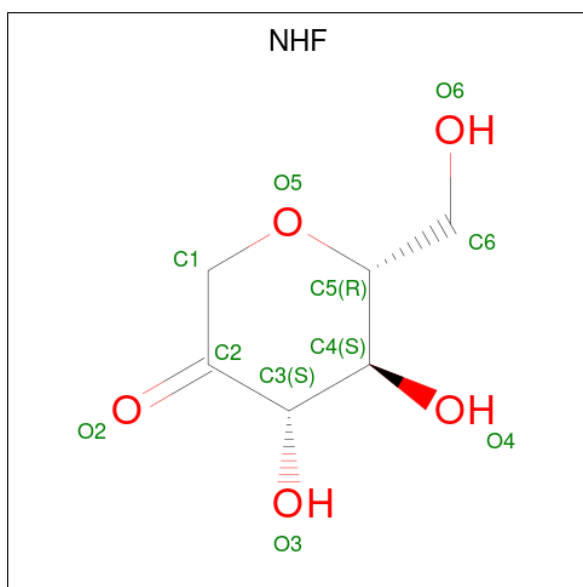
- Molecule 2 is ZINC ION (three-letter code: ZN) (formula: Zn).

Mol	Chain	Residues	Atoms		ZeroOcc	AltConf
			Total	Zn		
2	A	1	1	1	0	0

- Molecule 3 is MAGNESIUM ION (three-letter code: MG) (formula: Mg).

Mol	Chain	Residues	Atoms		ZeroOcc	AltConf
			Total	Mg		
3	A	1	1	1	0	0

- Molecule 4 is 1,5-anhydro-D-fructose (three-letter code: NHF) (formula: C₆H₁₀O₅).



Mol	Chain	Residues	Atoms	ZeroOcc	AltConf
4	A	1	Total C O 11 6 5	0	0
4	A	1	Total C O 11 6 5	0	0

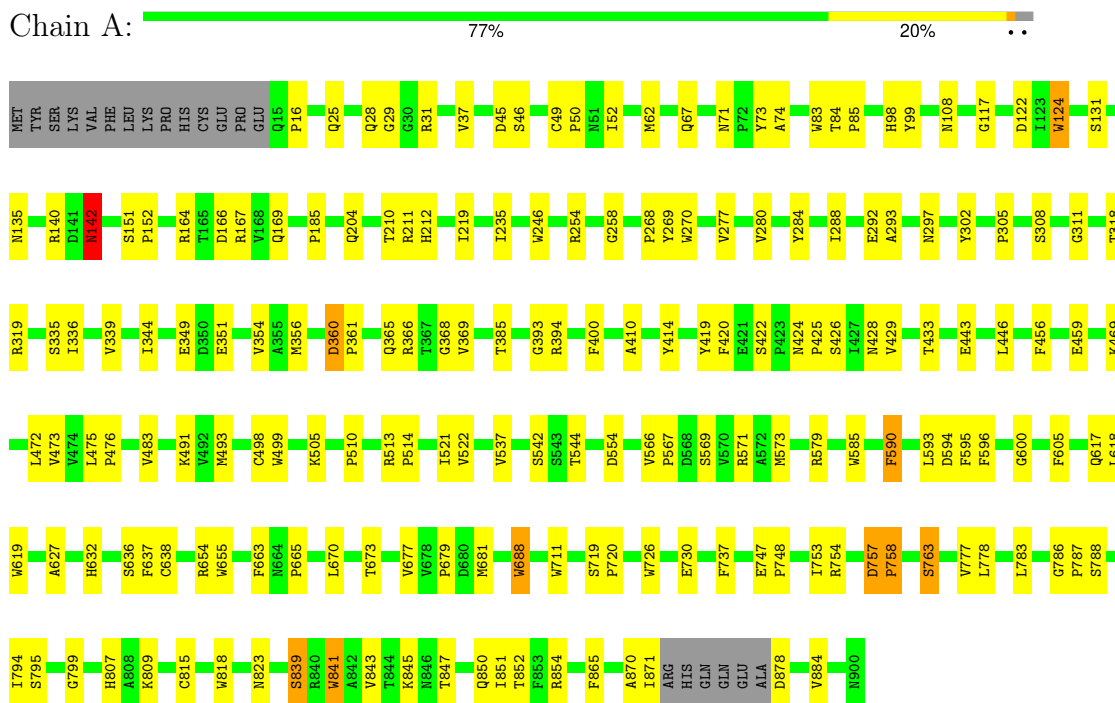
- Molecule 5 is water.

Mol	Chain	Residues	Atoms	ZeroOcc	AltConf
5	A	62	Total O 62 62	0	0

3 Residue-property plots [i](#)

These plots are drawn for all protein, RNA, DNA and oligosaccharide chains in the entry. The first graphic for a chain summarises the proportions of the various outlier classes displayed in the second graphic. The second graphic shows the sequence view annotated by issues in geometry. Residues are color-coded according to the number of geometric quality criteria for which they contain at least one outlier: green = 0, yellow = 1, orange = 2 and red = 3 or more. Stretches of 2 or more consecutive residues without any outlier are shown as a green connector. Residues present in the sample, but not in the model, are shown in grey.

- Molecule 1: ALDOS-2-ULOSE DEHYDRATASE



4 Data and refinement statistics

Property	Value	Source
Space group	P 21 21 2	Depositor
Cell constants a, b, c, α , β , γ	132.41Å 82.24Å 97.60Å 90.00° 90.00° 90.00°	Depositor
Resolution (Å)	56.81 – 2.80 40.22 – 2.59	Depositor EDS
% Data completeness (in resolution range)	86.5 (56.81-2.80) 97.3 (40.22-2.59)	Depositor EDS
R_{merge}	0.10	Depositor
R_{sym}	(Not available)	Depositor
$\langle I/\sigma(I) \rangle$ ¹	1.95 (at 2.58Å)	Xtrriage
Refinement program	REFMAC 5.6.0116	Depositor
R, R_{free}	0.183 , 0.261 0.255 , 0.269	Depositor DCC
R_{free} test set	1674 reflections (5.07%)	wwPDB-VP
Wilson B-factor (Å ²)	33.3	Xtrriage
Anisotropy	0.412	Xtrriage
Bulk solvent k_{sol} (e/Å ³), B_{sol} (Å ²)	0.30 , 28.1	EDS
L-test for twinning ²	$\langle L \rangle = 0.50$, $\langle L^2 \rangle = 0.33$	Xtrriage
Estimated twinning fraction	No twinning to report.	Xtrriage
F_o, F_c correlation	0.87	EDS
Total number of atoms	6882	wwPDB-VP
Average B, all atoms (Å ²)	36.0	wwPDB-VP

Xtrriage's analysis on translational NCS is as follows: *The largest off-origin peak in the Patterson function is 3.89% of the height of the origin peak. No significant pseudotranslation is detected.*

¹Intensities estimated from amplitudes.

²Theoretical values of $\langle |L| \rangle$, $\langle L^2 \rangle$ for acentric reflections are 0.5, 0.333 respectively for untwinned datasets, and 0.375, 0.2 for perfectly twinned datasets.

5 Model quality i

5.1 Standard geometry i

Bond lengths and bond angles in the following residue types are not validated in this section: MG, ZN, NHF

The Z score for a bond length (or angle) is the number of standard deviations the observed value is removed from the expected value. A bond length (or angle) with $|Z| > 5$ is considered an outlier worth inspection. RMSZ is the root-mean-square of all Z scores of the bond lengths (or angles).

Mol	Chain	Bond lengths		Bond angles	
		RMSZ	# $ Z > 5$	RMSZ	# $ Z > 5$
1	A	0.70	12/6998 (0.2%)	0.77	0/9560

All (12) bond length outliers are listed below:

Mol	Chain	Res	Type	Atoms	Z	Observed(Å)	Ideal(Å)
1	A	619	TRP	CD2-CE2	6.76	1.49	1.41
1	A	711	TRP	CD2-CE2	6.27	1.48	1.41
1	A	841	TRP	CD2-CE2	5.72	1.48	1.41
1	A	499	TRP	CD2-CE2	5.52	1.48	1.41
1	A	246	TRP	CD2-CE2	5.47	1.48	1.41
1	A	726	TRP	CD2-CE2	5.42	1.47	1.41
1	A	124	TRP	CD2-CE2	5.32	1.47	1.41
1	A	655	TRP	CD2-CE2	5.29	1.47	1.41
1	A	585	TRP	CD2-CE2	5.29	1.47	1.41
1	A	688	TRP	CD2-CE2	5.29	1.47	1.41
1	A	270	TRP	CD2-CE2	5.28	1.47	1.41
1	A	818	TRP	CD2-CE2	5.16	1.47	1.41

There are no bond angle outliers.

There are no chirality outliers.

There are no planarity outliers.

5.2 Too-close contacts i

In the following table, the Non-H and H(model) columns list the number of non-hydrogen atoms and hydrogen atoms in the chain respectively. The H(added) column lists the number of hydrogen atoms added and optimized by MolProbity. The Clashes column lists the number of clashes within the asymmetric unit, whereas Symm-Clashes lists symmetry-related clashes.

Mol	Chain	Non-H	H(model)	H(added)	Clashes	Symm-Clashes
1	A	6796	0	6531	107	0
2	A	1	0	0	0	0
3	A	1	0	0	0	0
4	A	22	0	20	4	0
5	A	62	0	0	3	0
All	All	6882	0	6551	107	0

The all-atom clashscore is defined as the number of clashes found per 1000 atoms (including hydrogen atoms). The all-atom clashscore for this structure is 8.

All (107) close contacts within the same asymmetric unit are listed below, sorted by their clash magnitude.

Atom-1	Atom-2	Interatomic distance (Å)	Clash overlap (Å)
1:A:469:LYS:HG3	1:A:542:SER:HB2	1.71	0.72
1:A:737:PHE:CZ	1:A:799:GLY:HA2	2.25	0.72
1:A:356:MET:HB3	1:A:366:ARG:O	1.89	0.72
1:A:498:CYS:SG	1:A:505:LYS:HE3	2.30	0.72
1:A:719:SER:HA	1:A:720:PRO:C	2.10	0.71
1:A:865:PHE:O	1:A:884:VAL:HA	1.92	0.69
1:A:185:PRO:HB2	1:A:210:THR:HG22	1.78	0.65
1:A:786:GLY:H	1:A:787:PRO:HD2	1.60	0.65
1:A:108:ASN:O	1:A:135:ASN:HB2	2.00	0.62
1:A:571:ARG:HD2	5:A:2040:HOH:O	2.00	0.62
1:A:807:HIS:CE1	1:A:809:LYS:HB3	2.36	0.61
1:A:28:GLN:O	1:A:426:SER:HB2	2.03	0.59
1:A:754:ARG:HG2	1:A:763:SER:HB3	1.84	0.59
1:A:117:GLY:HA2	1:A:124:TRP:CD1	2.38	0.58
1:A:360:ASP:HA	1:A:361:PRO:C	2.25	0.57
1:A:491:LYS:NZ	1:A:510:PRO:O	2.34	0.57
1:A:459:GLU:HG2	1:A:473:VAL:HG22	1.86	0.57
1:A:843:VAL:HG13	1:A:851:ILE:HG23	1.87	0.57
1:A:498:CYS:SG	1:A:505:LYS:CE	2.93	0.57
1:A:305:PRO:O	1:A:308:SER:OG	2.16	0.56
1:A:28:GLN:OE1	1:A:31:ARG:HD2	2.06	0.56
1:A:852:THR:CG2	1:A:865:PHE:CD2	2.88	0.55
1:A:491:LYS:HD3	1:A:491:LYS:C	2.27	0.55
1:A:654:ARG:HB3	1:A:673:THR:HG21	1.89	0.54
1:A:483:VAL:HG21	1:A:522:VAL:HG11	1.90	0.54
1:A:757:ASP:CB	1:A:758:PRO:HD2	2.38	0.54
1:A:356:MET:HB2	1:A:368:GLY:N	2.23	0.54
1:A:49:CYS:HB3	1:A:74:ALA:HA	1.90	0.53
1:A:753:ILE:HD11	1:A:794:ILE:HD11	1.91	0.53

Continued on next page...

Continued from previous page...

Atom-1	Atom-2	Interatomic distance (Å)	Clash overlap (Å)
1:A:566:VAL:HG13	1:A:567:PRO:HD2	1.91	0.53
1:A:513:ARG:O	1:A:514:PRO:C	2.48	0.52
1:A:638:CYS:HB3	1:A:688:TRP:CH2	2.45	0.52
1:A:654:ARG:HB3	1:A:673:THR:CG2	2.40	0.52
1:A:815:CYS:HB2	1:A:839:SER:HB3	1.91	0.52
1:A:45:ASP:OD1	1:A:46:SER:N	2.43	0.51
1:A:185:PRO:HB3	1:A:212:HIS:CD2	2.46	0.51
1:A:339:VAL:HG12	1:A:354:VAL:HG22	1.93	0.50
1:A:757:ASP:CG	1:A:758:PRO:HD2	2.31	0.50
1:A:637:PHE:CE1	1:A:730:GLU:HG2	2.46	0.50
1:A:677:VAL:O	1:A:679:PRO:HD3	2.12	0.49
1:A:443:GLU:HG2	1:A:600:GLY:CA	2.43	0.49
1:A:456:PHE:O	1:A:476:PRO:HD3	2.13	0.49
1:A:25:GLN:NE2	1:A:73:TYR:OH	2.45	0.49
1:A:50:PRO:HG2	1:A:400:PHE:CE1	2.47	0.49
1:A:302:TYR:HA	1:A:318:THR:O	2.13	0.49
1:A:52:ILE:HD12	1:A:83:TRP:CZ3	2.48	0.49
1:A:419:TYR:HD1	1:A:420:PHE:N	2.11	0.48
1:A:446:LEU:HD13	1:A:472:LEU:HD22	1.95	0.48
1:A:393:GLY:CA	1:A:414:TYR:HB2	2.43	0.48
1:A:344:ILE:N	1:A:351:GLU:OE1	2.46	0.48
1:A:823:ASN:O	1:A:823:ASN:CG	2.51	0.48
1:A:569:SER:O	1:A:573:MET:HG3	2.15	0.47
1:A:841:TRP:HA	1:A:854:ARG:O	2.14	0.47
1:A:843:VAL:HA	1:A:852:THR:O	2.15	0.47
1:A:845:LYS:HA	1:A:850:GLN:O	2.15	0.46
1:A:424:ASN:N	1:A:425:PRO:HD3	2.30	0.46
1:A:670:LEU:O	1:A:673:THR:HB	2.15	0.46
1:A:164:ARG:HG2	1:A:169:GLN:NE2	2.31	0.45
1:A:617:GLN:C	1:A:618:LEU:HD12	2.36	0.45
1:A:786:GLY:N	1:A:787:PRO:HD2	2.30	0.45
1:A:284:TYR:CZ	1:A:311:GLY:HA2	2.51	0.45
1:A:433:THR:HB	5:A:2030:HOH:O	2.17	0.45
1:A:786:GLY:N	1:A:787:PRO:CD	2.79	0.45
1:A:410:ALA:HA	1:A:429:VAL:HA	2.00	0.44
1:A:424:ASN:N	1:A:425:PRO:CD	2.80	0.44
1:A:493:MET:CE	1:A:537:VAL:HG23	2.47	0.44
1:A:124:TRP:HA	5:A:2006:HOH:O	2.17	0.44
1:A:277:VAL:HG22	1:A:288:ILE:HG12	2.00	0.44
1:A:258:GLY:HA3	1:A:302:TYR:HE2	1.82	0.43
1:A:37:VAL:HG12	1:A:394:ARG:HB3	2.00	0.43

Continued on next page...

Continued from previous page...

Atom-1	Atom-2	Interatomic distance (Å)	Clash overlap (Å)
1:A:424:ASN:O	1:A:425:PRO:C	2.56	0.43
1:A:235:ILE:N	1:A:235:ILE:HD12	2.33	0.43
1:A:280:VAL:HG13	1:A:349:GLU:HG2	2.00	0.43
1:A:84:THR:HA	1:A:85:PRO:HD3	1.72	0.43
1:A:297:ASN:OD1	1:A:335:SER:N	2.42	0.43
1:A:356:MET:HB2	1:A:368:GLY:H	1.84	0.42
1:A:593:LEU:O	1:A:595:PHE:N	2.52	0.42
1:A:29:GLY:HA2	1:A:426:SER:HB2	2.00	0.42
1:A:336:ILE:HG23	1:A:354:VAL:HG13	2.01	0.42
1:A:632:HIS:HE1	4:A:953:NHF:H1	1.84	0.42
1:A:117:GLY:HA3	1:A:122:ASP:O	2.20	0.42
1:A:475:LEU:HA	1:A:476:PRO:HD2	1.83	0.42
1:A:590:PHE:HB3	1:A:593:LEU:HD12	2.02	0.42
1:A:71:ASN:HB3	1:A:74:ALA:HB2	2.01	0.42
1:A:748:PRO:HB3	1:A:795:SER:HA	2.01	0.42
1:A:211:ARG:NH2	1:A:254:ARG:HG3	2.35	0.42
1:A:98:HIS:CG	1:A:99:TYR:H	2.37	0.42
1:A:627:ALA:HB1	4:A:953:NHF:O4	2.20	0.41
1:A:632:HIS:CE1	4:A:953:NHF:H1	2.55	0.41
1:A:258:GLY:HA3	1:A:302:TYR:CE2	2.56	0.41
1:A:757:ASP:O	1:A:758:PRO:C	2.58	0.41
1:A:354:VAL:O	1:A:369:VAL:HA	2.19	0.41
1:A:567:PRO:O	1:A:571:ARG:HG3	2.19	0.41
1:A:777:VAL:O	1:A:778:LEU:HD23	2.20	0.41
1:A:292:GLU:HA	1:A:293:ALA:HA	1.87	0.41
1:A:870:ALA:O	1:A:871:ILE:HG13	2.20	0.41
1:A:151:SER:HA	1:A:152:PRO:HD3	1.96	0.41
1:A:302:TYR:CE2	1:A:319:ARG:HB2	2.56	0.41
1:A:663:PHE:O	1:A:665:PRO:HD3	2.21	0.41
1:A:140:ARG:NH1	1:A:142:ASN:O	2.50	0.40
1:A:807:HIS:HE1	1:A:809:LYS:HB3	1.84	0.40
1:A:164:ARG:HH21	1:A:166:ASP:CG	2.24	0.40
1:A:521:ILE:HD11	1:A:681:MET:HG3	2.02	0.40
1:A:605:PHE:CE2	4:A:954:NHF:H3	2.56	0.40
1:A:49:CYS:N	1:A:50:PRO:CD	2.85	0.40
1:A:268:PRO:HG2	1:A:269:TYR:CE2	2.57	0.40
1:A:579:ARG:HA	1:A:596:PHE:CD2	2.57	0.40

There are no symmetry-related clashes.

5.3 Torsion angles [i](#)

5.3.1 Protein backbone [i](#)

In the following table, the Percentiles column shows the percent Ramachandran outliers of the chain as a percentile score with respect to all X-ray entries followed by that with respect to entries of similar resolution.

The Analysed column shows the number of residues for which the backbone conformation was analysed, and the total number of residues.

Mol	Chain	Analysed	Favoured	Allowed	Outliers	Percentiles
1	A	876/900 (97%)	814 (93%)	58 (7%)	4 (0%)	29 61

All (4) Ramachandran outliers are listed below:

Mol	Chain	Res	Type
1	A	788	SER
1	A	142	ASN
1	A	594	ASP
1	A	758	PRO

5.3.2 Protein sidechains [i](#)

In the following table, the Percentiles column shows the percent sidechain outliers of the chain as a percentile score with respect to all X-ray entries followed by that with respect to entries of similar resolution.

The Analysed column shows the number of residues for which the sidechain conformation was analysed, and the total number of residues.

Mol	Chain	Analysed	Rotameric	Outliers	Percentiles
1	A	723/742 (97%)	699 (97%)	24 (3%)	38 72

All (24) residues with a non-rotameric sidechain are listed below:

Mol	Chain	Res	Type
1	A	16	PRO
1	A	62	MET
1	A	67	GLN
1	A	131	SER
1	A	142	ASN
1	A	167	ARG
1	A	204	GLN

Continued on next page...

Continued from previous page...

Mol	Chain	Res	Type
1	A	219	ILE
1	A	360	ASP
1	A	365	GLN
1	A	385	THR
1	A	422	SER
1	A	428	ASN
1	A	544	THR
1	A	554	ASP
1	A	590	PHE
1	A	636	SER
1	A	747	GLU
1	A	757	ASP
1	A	763	SER
1	A	783	LEU
1	A	839	SER
1	A	847	THR
1	A	878	ASP

Sometimes sidechains can be flipped to improve hydrogen bonding and reduce clashes. All (2) such sidechains are listed below:

Mol	Chain	Res	Type
1	A	155	HIS
1	A	201	GLN

5.3.3 RNA [i](#)

There are no RNA molecules in this entry.

5.4 Non-standard residues in protein, DNA, RNA chains [i](#)

There are no non-standard protein/DNA/RNA residues in this entry.

5.5 Carbohydrates [i](#)

There are no monosaccharides in this entry.

5.6 Ligand geometry [i](#)

Of 4 ligands modelled in this entry, 2 are monoatomic - leaving 2 for Mogul analysis.

In the following table, the Counts columns list the number of bonds (or angles) for which Mogul statistics could be retrieved, the number of bonds (or angles) that are observed in the model and the number of bonds (or angles) that are defined in the Chemical Component Dictionary. The Link column lists molecule types, if any, to which the group is linked. The Z score for a bond length (or angle) is the number of standard deviations the observed value is removed from the expected value. A bond length (or angle) with $|Z| > 2$ is considered an outlier worth inspection. RMSZ is the root-mean-square of all Z scores of the bond lengths (or angles).

Mol	Type	Chain	Res	Link	Bond lengths			Bond angles		
					Counts	RMSZ	# Z > 2	Counts	RMSZ	# Z > 2
4	NHF	A	954	-	11,11,11	2.92	5 (45%)	11,15,15	1.84	4 (36%)
4	NHF	A	953	-	11,11,11	2.80	3 (27%)	11,15,15	1.47	2 (18%)

In the following table, the Chirals column lists the number of chiral outliers, the number of chiral centers analysed, the number of these observed in the model and the number defined in the Chemical Component Dictionary. Similar counts are reported in the Torsion and Rings columns. '-' means no outliers of that kind were identified.

Mol	Type	Chain	Res	Link	Chirals	Torsions	Rings
4	NHF	A	954	-	-	1/2/19/19	0/1/1/1
4	NHF	A	953	-	-	2/2/19/19	0/1/1/1

All (8) bond length outliers are listed below:

Mol	Chain	Res	Type	Atoms	Z	Observed(Å)	Ideal(Å)
4	A	953	NHF	C1-C2	-8.32	1.42	1.51
4	A	954	NHF	C1-C2	-8.07	1.42	1.51
4	A	954	NHF	O5-C1	2.82	1.49	1.43
4	A	953	NHF	O5-C1	2.77	1.49	1.43
4	A	953	NHF	O2-C2	2.67	1.26	1.21
4	A	954	NHF	O5-C5	2.42	1.48	1.43
4	A	954	NHF	O3-C3	2.13	1.46	1.42
4	A	954	NHF	C3-C2	2.07	1.55	1.52

All (6) bond angle outliers are listed below:

Mol	Chain	Res	Type	Atoms	Z	Observed(°)	Ideal(°)
4	A	954	NHF	O5-C5-C6	4.10	115.64	107.66
4	A	953	NHF	O3-C3-C4	-2.53	105.28	110.53
4	A	954	NHF	O5-C5-C4	-2.53	104.68	110.83
4	A	954	NHF	O3-C3-C2	2.38	114.65	109.84
4	A	953	NHF	C6-C5-C4	-2.35	107.26	113.02
4	A	954	NHF	O4-C4-C5	2.09	114.47	109.32

There are no chirality outliers.

All (3) torsion outliers are listed below:

Mol	Chain	Res	Type	Atoms
4	A	953	NHF	O5-C5-C6-O6
4	A	954	NHF	O5-C5-C6-O6
4	A	953	NHF	C4-C5-C6-O6

There are no ring outliers.

2 monomers are involved in 4 short contacts:

Mol	Chain	Res	Type	Clashes	Symm-Clashes
4	A	954	NHF	1	0
4	A	953	NHF	3	0

5.7 Other polymers [i](#)

There are no such residues in this entry.

5.8 Polymer linkage issues [i](#)

There are no chain breaks in this entry.

6 Fit of model and data

6.1 Protein, DNA and RNA chains

Unable to reproduce the depositors R factor - this section is therefore empty.

6.2 Non-standard residues in protein, DNA, RNA chains

Unable to reproduce the depositors R factor - this section is therefore empty.

6.3 Carbohydrates

Unable to reproduce the depositors R factor - this section is therefore empty.

6.4 Ligands

Unable to reproduce the depositors R factor - this section is therefore empty.

6.5 Other polymers

Unable to reproduce the depositors R factor - this section is therefore empty.