



Full wwPDB X-ray Structure Validation Report ⓘ

Nov 11, 2023 – 06:30 pm GMT

PDB ID : 3ZP7
Title : Arg90Cit chorismate mutase of Bacillus subtilis in complex with chorismate and prephenate
Authors : Burschowsky, D.; vanEerde, A.; Okvist, M.; Kienhofer, A.; Kast, P.; Hilvert, D.; Krengel, U.
Deposited on : 2013-02-26
Resolution : 1.70 Å(reported)

This is a Full wwPDB X-ray Structure Validation Report for a publicly released PDB entry.

We welcome your comments at validation@mail.wwpdb.org

A user guide is available at

<https://www.wwpdb.org/validation/2017/XrayValidationReportHelp>

with specific help available everywhere you see the ⓘ symbol.

The types of validation reports are described at

<http://www.wwpdb.org/validation/2017/FAQs#types>.

The following versions of software and data (see [references ⓘ](#)) were used in the production of this report:

MolProbity : 4.02b-467
Mogul : 1.8.4, CSD as541be (2020)
Xtrriage (Phenix) : 1.13
EDS : 2.36
Percentile statistics : 20191225.v01 (using entries in the PDB archive December 25th 2019)
Refmac : 5.8.0158
CCP4 : 7.0.044 (Gargrove)
Ideal geometry (proteins) : Engh & Huber (2001)
Ideal geometry (DNA, RNA) : Parkinson et al. (1996)
Validation Pipeline (wwPDB-VP) : 2.36

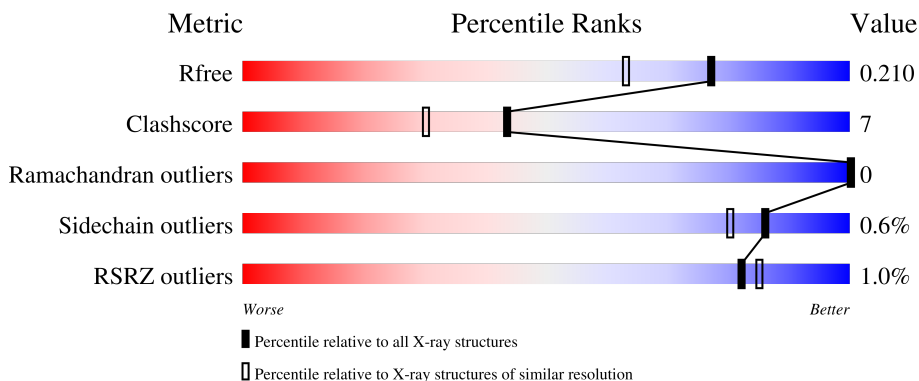
1 Overall quality at a glance

The following experimental techniques were used to determine the structure:

X-RAY DIFFRACTION

The reported resolution of this entry is 1.70 Å.

Percentile scores (ranging between 0-100) for global validation metrics of the entry are shown in the following graphic. The table shows the number of entries on which the scores are based.




Metric	Whole archive (#Entries)	Similar resolution (#Entries, resolution range(Å))
R_{free}	130704	4298 (1.70-1.70)
Clashscore	141614	4695 (1.70-1.70)
Ramachandran outliers	138981	4610 (1.70-1.70)
Sidechain outliers	138945	4610 (1.70-1.70)
RSRZ outliers	127900	4222 (1.70-1.70)

The table below summarises the geometric issues observed across the polymeric chains and their fit to the electron density. The red, orange, yellow and green segments of the lower bar indicate the fraction of residues that contain outliers for ≥ 3 , 2, 1 and 0 types of geometric quality criteria respectively. A grey segment represents the fraction of residues that are not modelled. The numeric value for each fraction is indicated below the corresponding segment, with a dot representing fractions $\leq 5\%$. The upper red bar (where present) indicates the fraction of residues that have poor fit to the electron density. The numeric value is given above the bar.

Mol	Chain	Length	Quality of chain
1	A	127	81% 11% 8%
1	B	127	80% 11% 8%
1	C	127	81% 10% 8%
1	D	127	76% 16% 8%
1	E	127	79% 13% 8%

Continued on next page...

Continued from previous page...

Mol	Chain	Length	Quality of chain
1	F	127	 A horizontal bar chart showing the quality of chain. The bar is divided into segments: a small red segment at the beginning labeled '2%', a large green segment labeled '81%', a yellow segment labeled '9%', and a small grey segment at the end labeled '8%'.

2 Entry composition

There are 4 unique types of molecules in this entry. The entry contains 6477 atoms, of which 0 are hydrogens and 0 are deuteriums.

In the tables below, the ZeroOcc column contains the number of atoms modelled with zero occupancy, the AltConf column contains the number of residues with at least one atom in alternate conformation and the Trace column contains the number of residues modelled with at most 2 atoms.

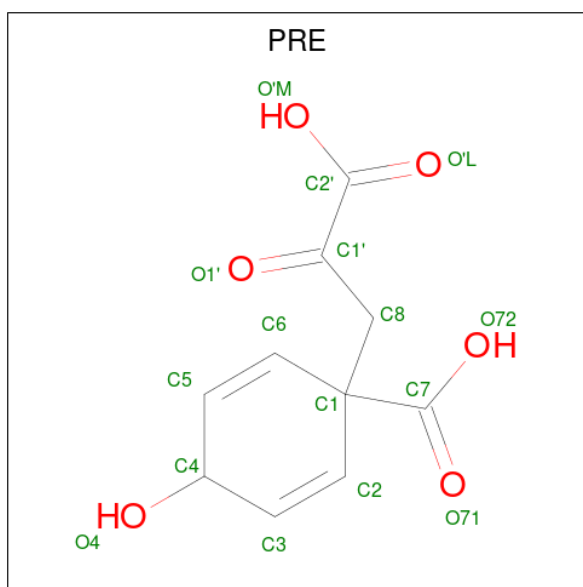
- Molecule 1 is a protein called CHORISMATE MUTASE AROH.

Mol	Chain	Residues	Atoms					ZeroOcc	AltConf	Trace
			Total	C	N	O	S			
1	A	117	Total 942	C 595	N 161	O 175	S 11	0	2	0
1	B	117	Total 966	C 613	N 163	O 179	S 11	0	6	0
1	C	117	Total 942	C 595	N 161	O 175	S 11	0	2	0
1	D	117	Total 969	C 616	N 165	O 177	S 11	0	7	0
1	E	117	Total 975	C 616	N 164	O 184	S 11	0	7	0
1	F	117	Total 960	C 608	N 164	O 177	S 11	0	5	0

There are 12 discrepancies between the modelled and reference sequences:

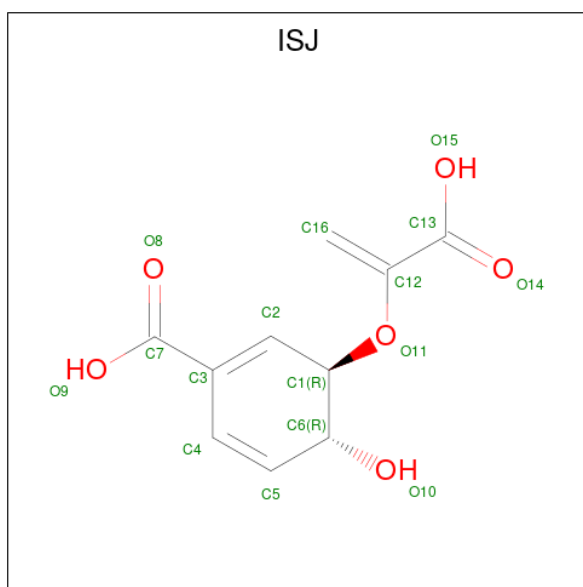
Chain	Residue	Modelled	Actual	Comment	Reference
A	102	GLU	ASP	engineered mutation	UNP P19080
A	112	ALA	VAL	variant	UNP P19080
B	102	GLU	ASP	engineered mutation	UNP P19080
B	112	ALA	VAL	variant	UNP P19080
C	102	GLU	ASP	engineered mutation	UNP P19080
C	112	ALA	VAL	variant	UNP P19080
D	102	GLU	ASP	engineered mutation	UNP P19080
D	112	ALA	VAL	variant	UNP P19080
E	102	GLU	ASP	engineered mutation	UNP P19080
E	112	ALA	VAL	variant	UNP P19080
F	102	GLU	ASP	engineered mutation	UNP P19080
F	112	ALA	VAL	variant	UNP P19080

- Molecule 2 is PREPHENIC ACID (three-letter code: PRE) (formula: C₁₀H₁₀O₆).



Mol	Chain	Residues	Atoms		ZeroOcc	AltConf
2	A	1	Total	C O	0	1
			16	10 6		
2	B	1	Total	C O	0	1
			16	10 6		
2	C	1	Total	C O	0	1
			16	10 6		
2	D	1	Total	C O	0	1
			16	10 6		
2	D	1	Total	C O	0	1
			16	10 6		

- Molecule 3 is (3R,4R)-3-[(1-carboxyethenyl)oxy]-4-hydroxycyclohexa-1,5-diene-1-carboxylic acid (three-letter code: ISJ) (formula: C₁₀H₁₀O₆).



Mol	Chain	Residues	Atoms		ZeroOcc	AltConf
3	A	1	Total	C O	0	1
			16	10 6		
3	B	1	Total	C O	0	1
			16	10 6		
3	C	1	Total	C O	0	1
			16	10 6		
3	D	1	Total	C O	0	1
			16	10 6		
3	D	1	Total	C O	0	1
			16	10 6		

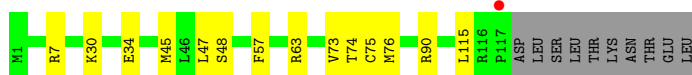
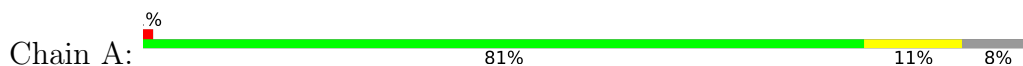
- Molecule 4 is water.

Mol	Chain	Residues	Atoms		ZeroOcc	AltConf
4	A	119	Total	O	0	0
			119	119		
4	B	86	Total	O	0	0
			86	86		
4	C	92	Total	O	0	0
			92	92		
4	D	108	Total	O	0	0
			108	108		
4	E	95	Total	O	0	0
			95	95		
4	F	63	Total	O	0	0
			63	63		

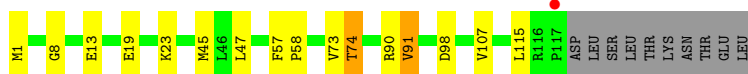
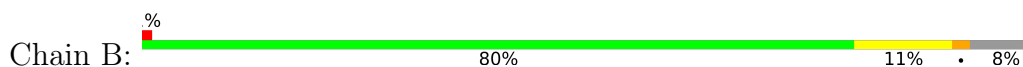
3 Residue-property plots [i](#)

These plots are drawn for all protein, RNA, DNA and oligosaccharide chains in the entry. The first graphic for a chain summarises the proportions of the various outlier classes displayed in the second graphic. The second graphic shows the sequence view annotated by issues in geometry and electron density. Residues are color-coded according to the number of geometric quality criteria for which they contain at least one outlier: green = 0, yellow = 1, orange = 2 and red = 3 or more. A red dot above a residue indicates a poor fit to the electron density ($RSRZ > 2$). Stretches of 2 or more consecutive residues without any outlier are shown as a green connector. Residues present in the sample, but not in the model, are shown in grey.

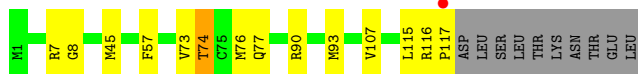
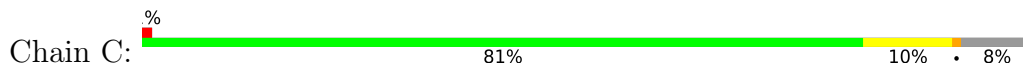
- Molecule 1: CHORISMATE MUTASE AROH



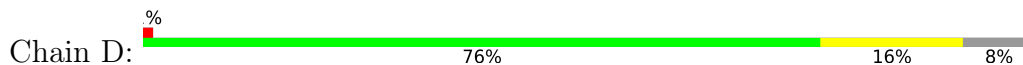
- Molecule 1: CHORISMATE MUTASE AROH



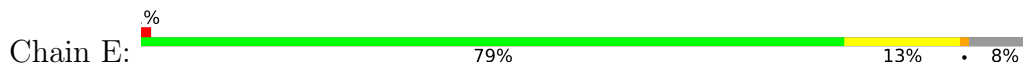
- Molecule 1: CHORISMATE MUTASE AROH



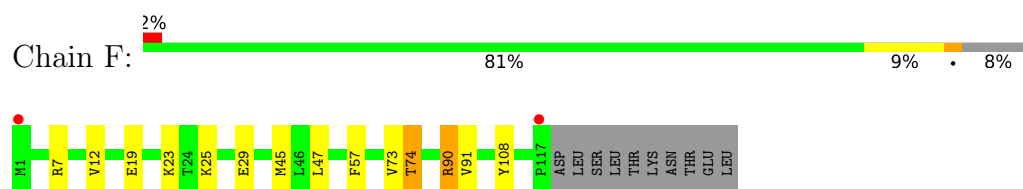
- Molecule 1: CHORISMATE MUTASE AROH



- Molecule 1: CHORISMATE MUTASE AROH



- Molecule 1: CHORISMATE MUTASE AROH



4 Data and refinement statistics

Property	Value	Source
Space group	P 1	Depositor
Cell constants a, b, c, α , β , γ	50.24Å 51.31Å 70.14Å 97.51° 92.91° 101.11°	Depositor
Resolution (Å)	37.96 – 1.70 49.15 – 1.70	Depositor EDS
% Data completeness (in resolution range)	93.7 (37.96-1.70) 93.7 (49.15-1.70)	Depositor EDS
R_{merge}	0.03	Depositor
R_{sym}	(Not available)	Depositor
$\langle I/\sigma(I) \rangle$ ¹	3.26 (at 1.70Å)	Xtrriage
Refinement program	PHENIX (PHENIX.REFINE)	Depositor
R, R_{free}	0.165 , 0.218 0.159 , 0.210	Depositor DCC
R_{free} test set	3547 reflections (5.04%)	wwPDB-VP
Wilson B-factor (Å ²)	15.3	Xtrriage
Anisotropy	0.019	Xtrriage
Bulk solvent k_{sol} (e/Å ³), B_{sol} (Å ²)	0.33 , 50.6	EDS
L-test for twinning ²	$\langle L \rangle = 0.49$, $\langle L^2 \rangle = 0.33$	Xtrriage
Estimated twinning fraction	No twinning to report.	Xtrriage
F_o, F_c correlation	0.96	EDS
Total number of atoms	6477	wwPDB-VP
Average B, all atoms (Å ²)	20.0	wwPDB-VP

Xtrriage's analysis on translational NCS is as follows: *The largest off-origin peak in the Patterson function is 6.58% of the height of the origin peak. No significant pseudotranslation is detected.*

¹Intensities estimated from amplitudes.

²Theoretical values of $\langle |L| \rangle$, $\langle L^2 \rangle$ for acentric reflections are 0.5, 0.333 respectively for untwinned datasets, and 0.375, 0.2 for perfectly twinned datasets.

5 Model quality [i](#)

5.1 Standard geometry [i](#)

Bond lengths and bond angles in the following residue types are not validated in this section: PRE, ISJ, CIR

The Z score for a bond length (or angle) is the number of standard deviations the observed value is removed from the expected value. A bond length (or angle) with $|Z| > 5$ is considered an outlier worth inspection. RMSZ is the root-mean-square of all Z scores of the bond lengths (or angles).

Mol	Chain	Bond lengths		Bond angles	
		RMSZ	# Z >5	RMSZ	# Z >5
1	A	0.33	0/949	0.51	0/1280
1	B	0.34	0/979	0.51	0/1322
1	C	0.35	0/949	0.54	0/1280
1	D	0.33	0/991	0.52	0/1337
1	E	0.35	0/991	0.53	0/1337
1	F	0.32	0/976	0.51	0/1316
All	All	0.34	0/5835	0.52	0/7872

There are no bond length outliers.

There are no bond angle outliers.

There are no chirality outliers.

There are no planarity outliers.

5.2 Too-close contacts [i](#)

In the following table, the Non-H and H(model) columns list the number of non-hydrogen atoms and hydrogen atoms in the chain respectively. The H(added) column lists the number of hydrogen atoms added and optimized by MolProbity. The Clashes column lists the number of clashes within the asymmetric unit, whereas Symm-Clashes lists symmetry-related clashes.

Mol	Chain	Non-H	H(model)	H(added)	Clashes	Symm-Clashes
1	A	942	0	982	13	0
1	B	966	0	1015	12	0
1	C	942	0	982	14	0
1	D	969	0	1030	18	0
1	E	975	0	1015	12	0
1	F	960	0	1010	11	0
2	A	16	0	8	2	0

Continued on next page...

Continued from previous page...

Mol	Chain	Non-H	H(model)	H(added)	Clashes	Symm-Clashes
2	B	16	0	8	2	0
2	C	16	0	8	2	0
2	D	32	0	16	4	0
3	A	16	0	8	4	0
3	B	16	0	8	5	0
3	C	16	0	8	3	0
3	D	32	0	16	9	0
4	A	119	0	0	0	0
4	B	86	0	0	1	0
4	C	92	0	0	1	1
4	D	108	0	0	2	0
4	E	95	0	0	1	1
4	F	63	0	0	0	0
All	All	6477	0	6114	80	1

The all-atom clashscore is defined as the number of clashes found per 1000 atoms (including hydrogen atoms). The all-atom clashscore for this structure is 7.

All (80) close contacts within the same asymmetric unit are listed below, sorted by their clash magnitude.

Atom-1	Atom-2	Interatomic distance (Å)	Clash overlap (Å)
1:E:77[B]:GLN:OE1	4:E:2051:HOH:O	1.94	0.84
1:A:74:THR:HA	2:A:1118[A]:PRE:H3	1.64	0.78
1:F:7[B]:ARG:HH22	1:F:90:CIR:H51	1.54	0.72
1:B:74:THR:HA	3:B:1119[B]:ISJ:H5	1.71	0.70
1:C:116:ARG:HE	1:C:117:PRO:HD2	1.57	0.70
2:D:1118[B]:PRE:H5	1:F:74:THR:HA	1.72	0.70
1:D:74:THR:HA	2:D:1119[B]:PRE:H5	1.75	0.68
1:B:74:THR:HA	2:B:1118[A]:PRE:H3	1.75	0.66
1:F:47:LEU:HD22	1:F:91:VAL:HG22	1.77	0.66
3:D:1120[A]:ISJ:H5	1:F:74:THR:HA	1.77	0.66
1:C:45[B]:MET:HE2	1:C:93:MET:HG3	1.78	0.65
1:E:47:LEU:HD22	1:E:91:VAL:HG22	1.79	0.65
1:C:45[B]:MET:HB3	1:C:73:VAL:HG12	1.81	0.62
1:A:63:ARG:NH1	3:A:1119[B]:ISJ:O9	2.33	0.61
1:C:74:THR:HA	2:C:1118[B]:PRE:H3	1.85	0.58
1:D:47[A]:LEU:HD22	1:D:91[A]:VAL:HG22	1.85	0.58
1:C:45[A]:MET:HB2	1:C:73:VAL:HG12	1.86	0.57
1:A:74:THR:HA	3:A:1119[B]:ISJ:H5	1.87	0.57
2:D:1118[B]:PRE:H3	1:F:57:PHE:CD1	2.40	0.56
1:C:74:THR:HA	3:C:1119[A]:ISJ:H5	1.85	0.56

Continued on next page...

Continued from previous page...

Atom-1	Atom-2	Interatomic distance (Å)	Clash overlap (Å)
1:F:45[A]:MET:HB2	1:F:73[A]:VAL:HG12	1.88	0.54
1:D:78:GLU:OE1	1:D:79:MET:N	2.36	0.54
3:D:1121[A]:ISJ:H16A	1:E:115:LEU:HB3	1.90	0.54
1:B:47[B]:LEU:HG	1:B:91[B]:VAL:HG12	1.91	0.53
1:B:57:PHE:CD1	2:B:1118[A]:PRE:H5	2.44	0.52
1:D:16[B]:THR:HG23	1:D:19:GLU:H	1.74	0.52
3:B:1119[B]:ISJ:C16	1:C:115:LEU:HB3	2.40	0.52
1:D:74:THR:HA	3:D:1121[A]:ISJ:H5	1.92	0.51
1:C:77:GLN:NE2	4:C:2049:HOH:O	2.20	0.51
1:D:57:PHE:CD1	2:D:1119[B]:PRE:H3	2.46	0.50
1:A:75:CYS:O	1:A:76[B]:MET:HG3	2.11	0.50
1:F:7[B]:ARG:NH2	1:F:90:CIR:HN81	2.10	0.50
1:B:47[B]:LEU:HD23	1:B:58:PRO:HB2	1.94	0.49
1:B:45:MET:HB2	1:B:73[B]:VAL:HG22	1.94	0.49
1:E:113:VAL:O	1:E:116:ARG:HG2	2.13	0.49
1:D:74:THR:HA	3:D:1121[A]:ISJ:C5	2.42	0.48
1:B:8:GLY:HA2	1:B:107:VAL:O	2.13	0.48
3:D:1121[A]:ISJ:C16	1:E:115:LEU:HB3	2.45	0.47
1:F:7[B]:ARG:HD3	1:F:108:TYR:OH	2.14	0.47
1:D:115:LEU:HB3	3:D:1120[A]:ISJ:H16A	1.97	0.47
3:B:1119[B]:ISJ:H16	4:B:2085:HOH:O	2.14	0.46
3:B:1119[B]:ISJ:C13	1:C:7:ARG:HH12	2.29	0.46
1:F:25:LYS:HE2	1:F:29:GLU:OE2	2.16	0.46
1:E:14:ARG:HG3	1:E:16:THR:HG23	1.96	0.46
1:D:115:LEU:HD22	3:D:1120[A]:ISJ:C16	2.46	0.46
1:D:45[A]:MET:HB2	1:D:73:VAL:HG22	1.99	0.45
1:A:45[A]:MET:HE2	1:A:47:LEU:HD11	1.98	0.45
1:A:48:SER:HB3	1:C:76[B]:MET:HE1	1.97	0.45
1:A:30:LYS:HE3	1:A:34:GLU:OE2	2.17	0.44
1:D:8:GLY:HA2	1:D:107:VAL:O	2.18	0.44
1:A:45[A]:MET:HB2	1:A:73:VAL:HG22	1.99	0.44
1:D:45[B]:MET:HB3	1:D:73:VAL:HG22	2.00	0.43
1:A:115:LEU:HB3	3:C:1119[A]:ISJ:H16A	2.00	0.43
1:B:13:GLU:HB2	1:B:19:GLU:OE2	2.17	0.43
4:D:2065:HOH:O	1:E:77[A]:GLN:NE2	2.21	0.43
1:A:57:PHE:CD1	2:A:1118[A]:PRE:H5	2.53	0.43
1:E:45:MET:HB2	1:E:73[B]:VAL:HG22	2.01	0.43
1:B:1[B]:MET:HE1	1:B:98[B]:ASP:CG	2.39	0.43
3:A:1119[B]:ISJ:H16A	1:B:115:LEU:HB3	2.01	0.42
1:B:45:MET:HE2	1:B:45:MET:HB3	1.52	0.42
1:C:8:GLY:HA2	1:C:107:VAL:O	2.19	0.42

Continued on next page...

Continued from previous page...

Atom-1	Atom-2	Interatomic distance (Å)	Clash overlap (Å)
1:B:23:LYS:HA	1:B:23:LYS:HD3	1.91	0.42
1:E:12:VAL:HB	1:E:19[B]:GLU:HG2	2.00	0.42
1:A:7:ARG:NH1	3:C:1119[A]:ISJ:O15	2.32	0.42
3:B:1119[B]:ISJ:H16A	1:C:115:LEU:HB3	2.01	0.42
1:C:57:PHE:CD1	2:C:1118[B]:PRE:H5	2.55	0.41
3:D:1121[A]:ISJ:H6	1:E:90:CIR:N6	2.35	0.41
1:E:30:LYS:HE3	1:E:34[B]:GLU:OE2	2.19	0.41
1:D:21:LEU:HD21	1:D:60:LYS:HB3	2.02	0.41
1:D:46:LEU:O	1:D:47[A]:LEU:HD23	2.21	0.41
1:E:1[A]:MET:HE1	1:E:98[A]:ASP:N	2.36	0.41
1:C:116:ARG:NE	1:C:117:PRO:HD2	2.31	0.41
1:A:63:ARG:HH12	3:A:1119[B]:ISJ:C7	2.33	0.41
1:D:23:LYS:HE2	4:D:2011:HOH:O	2.20	0.41
1:F:23:LYS:HA	1:F:23:LYS:HD3	1.91	0.41
1:F:12:VAL:HB	1:F:19[B]:GLU:CG	2.52	0.40
1:A:47:LEU:O	1:A:75:CYS:HA	2.21	0.40
1:D:7[A]:ARG:HH12	3:D:1120[A]:ISJ:C13	2.34	0.40

All (1) symmetry-related close contacts are listed below. The label for Atom-2 includes the symmetry operator and encoded unit-cell translations to be applied.

Atom-1	Atom-2	Interatomic distance (Å)	Clash overlap (Å)
4:C:2088:HOH:O	4:E:2089:HOH:O[1_554]	2.13	0.07

5.3 Torsion angles [i](#)

5.3.1 Protein backbone [i](#)

In the following table, the Percentiles column shows the percent Ramachandran outliers of the chain as a percentile score with respect to all X-ray entries followed by that with respect to entries of similar resolution.

The Analysed column shows the number of residues for which the backbone conformation was analysed, and the total number of residues.

Mol	Chain	Analysed	Favoured	Allowed	Outliers	Percentiles	
1	A	116/127 (91%)	116 (100%)	0	0	100	100
1	B	119/127 (94%)	117 (98%)	2 (2%)	0	100	100
1	C	116/127 (91%)	116 (100%)	0	0	100	100

Continued on next page...

Continued from previous page...

Mol	Chain	Analysed	Favoured	Allowed	Outliers	Percentiles	
1	D	121/127 (95%)	119 (98%)	2 (2%)	0	100	100
1	E	120/127 (94%)	119 (99%)	1 (1%)	0	100	100
1	F	119/127 (94%)	115 (97%)	4 (3%)	0	100	100
All	All	711/762 (93%)	702 (99%)	9 (1%)	0	100	100

There are no Ramachandran outliers to report.

5.3.2 Protein sidechains [i](#)

In the following table, the Percentiles column shows the percent sidechain outliers of the chain as a percentile score with respect to all X-ray entries followed by that with respect to entries of similar resolution.

The Analysed column shows the number of residues for which the sidechain conformation was analysed, and the total number of residues.

Mol	Chain	Analysed	Rotameric	Outliers	Percentiles	
1	A	107/115 (93%)	107 (100%)	0	100	100
1	B	111/115 (96%)	108 (97%)	3 (3%)	44	26
1	C	107/115 (93%)	106 (99%)	1 (1%)	78	70
1	D	112/115 (97%)	112 (100%)	0	100	100
1	E	112/115 (97%)	112 (100%)	0	100	100
1	F	110/115 (96%)	109 (99%)	1 (1%)	78	70
All	All	659/690 (96%)	654 (99%)	5 (1%)	86	74

All (5) residues with a non-rotameric sidechain are listed below:

Mol	Chain	Res	Type
1	B	74	THR
1	B	91[A]	VAL
1	B	91[B]	VAL
1	C	74	THR
1	F	74	THR

Sometimes sidechains can be flipped to improve hydrogen bonding and reduce clashes. There are no such sidechains identified.

5.3.3 RNA [i](#)

There are no RNA molecules in this entry.

5.4 Non-standard residues in protein, DNA, RNA chains [i](#)

6 non-standard protein/DNA/RNA residues are modelled in this entry.

In the following table, the Counts columns list the number of bonds (or angles) for which Mogul statistics could be retrieved, the number of bonds (or angles) that are observed in the model and the number of bonds (or angles) that are defined in the Chemical Component Dictionary. The Link column lists molecule types, if any, to which the group is linked. The Z score for a bond length (or angle) is the number of standard deviations the observed value is removed from the expected value. A bond length (or angle) with $|Z| > 2$ is considered an outlier worth inspection. RMSZ is the root-mean-square of all Z scores of the bond lengths (or angles).

Mol	Type	Chain	Res	Link	Bond lengths			Bond angles		
					Counts	RMSZ	# Z > 2	Counts	RMSZ	# Z > 2
1	CIR	B	90	1	9,10,11	3.08	3 (33%)	6,11,13	1.33	0
1	CIR	D	90	1	9,10,11	2.95	3 (33%)	6,11,13	1.88	2 (33%)
1	CIR	E	90	1	9,10,11	2.88	3 (33%)	6,11,13	1.83	2 (33%)
1	CIR	A	90	1	9,10,11	2.96	3 (33%)	6,11,13	1.58	0
1	CIR	C	90	1	9,10,11	2.96	3 (33%)	6,11,13	1.86	1 (16%)
1	CIR	F	90	1	9,10,11	3.04	3 (33%)	6,11,13	2.56	3 (50%)

In the following table, the Chirals column lists the number of chiral outliers, the number of chiral centers analysed, the number of these observed in the model and the number defined in the Chemical Component Dictionary. Similar counts are reported in the Torsion and Rings columns. '-' means no outliers of that kind were identified.

Mol	Type	Chain	Res	Link	Chirals	Torsions	Rings
1	CIR	B	90	1	-	0/8/9/11	-
1	CIR	D	90	1	-	0/8/9/11	-
1	CIR	E	90	1	-	0/8/9/11	-
1	CIR	A	90	1	-	0/8/9/11	-
1	CIR	C	90	1	-	0/8/9/11	-
1	CIR	F	90	1	-	2/8/9/11	-

All (18) bond length outliers are listed below:

Mol	Chain	Res	Type	Atoms	Z	Observed(Å)	Ideal(Å)
1	B	90	CIR	C7-N6	7.07	1.43	1.34
1	A	90	CIR	C7-N6	6.95	1.43	1.34

Continued on next page...

Continued from previous page...

Mol	Chain	Res	Type	Atoms	Z	Observed(Å)	Ideal(Å)
1	F	90	CIR	C7-N6	6.92	1.43	1.34
1	C	90	CIR	C7-N6	6.89	1.43	1.34
1	D	90	CIR	C7-N6	6.72	1.43	1.34
1	E	90	CIR	C7-N6	6.70	1.43	1.34
1	B	90	CIR	C7-N8	4.58	1.43	1.33
1	C	90	CIR	C7-N8	4.54	1.43	1.33
1	F	90	CIR	C7-N8	4.52	1.43	1.33
1	A	90	CIR	C7-N8	4.50	1.43	1.33
1	D	90	CIR	C7-N8	4.50	1.43	1.33
1	E	90	CIR	C7-N8	4.47	1.43	1.33
1	F	90	CIR	C3-CA	-2.98	1.49	1.53
1	D	90	CIR	C3-CA	-2.90	1.49	1.53
1	B	90	CIR	C3-CA	-2.83	1.49	1.53
1	C	90	CIR	C3-CA	-2.39	1.50	1.53
1	E	90	CIR	C3-CA	-2.18	1.50	1.53
1	A	90	CIR	C3-CA	-2.16	1.50	1.53

All (8) bond angle outliers are listed below:

Mol	Chain	Res	Type	Atoms	Z	Observed(°)	Ideal(°)
1	F	90	CIR	N8-C7-N6	4.04	121.11	116.85
1	F	90	CIR	O7-C7-N6	-3.33	119.27	121.74
1	C	90	CIR	C5-N6-C7	-2.90	119.28	122.73
1	D	90	CIR	N8-C7-N6	2.32	119.30	116.85
1	E	90	CIR	C5-N6-C7	-2.22	120.08	122.73
1	E	90	CIR	N8-C7-N6	2.22	119.19	116.85
1	F	90	CIR	O7-C7-N8	-2.10	119.61	123.22
1	D	90	CIR	O7-C7-N6	-2.07	120.21	121.74

There are no chirality outliers.

All (2) torsion outliers are listed below:

Mol	Chain	Res	Type	Atoms
1	F	90	CIR	O7-C7-N6-C5
1	F	90	CIR	N8-C7-N6-C5

There are no ring outliers.

2 monomers are involved in 3 short contacts:

Mol	Chain	Res	Type	Clashes	Symm-Clashes
1	E	90	CIR	1	0

Continued on next page...

Continued from previous page...

Mol	Chain	Res	Type	Clashes	Symm-Clashes
1	F	90	CIR	2	0

5.5 Carbohydrates [i](#)

There are no monosaccharides in this entry.

5.6 Ligand geometry [i](#)

10 ligands are modelled in this entry.

In the following table, the Counts columns list the number of bonds (or angles) for which Mogul statistics could be retrieved, the number of bonds (or angles) that are observed in the model and the number of bonds (or angles) that are defined in the Chemical Component Dictionary. The Link column lists molecule types, if any, to which the group is linked. The Z score for a bond length (or angle) is the number of standard deviations the observed value is removed from the expected value. A bond length (or angle) with $|Z| > 2$ is considered an outlier worth inspection. RMSZ is the root-mean-square of all Z scores of the bond lengths (or angles).

Mol	Type	Chain	Res	Link	Bond lengths			Bond angles		
					Counts	RMSZ	# $ Z > 2$	Counts	RMSZ	# $ Z > 2$
2	PRE	D	1119[B]	-	16,16,16	4.52	5 (31%)	11,23,23	1.33	1 (9%)
3	ISJ	D	1120[A]	-	16,16,16	3.06	5 (31%)	14,22,22	2.57	6 (42%)
2	PRE	C	1118[B]	-	16,16,16	4.51	5 (31%)	11,23,23	1.23	1 (9%)
3	ISJ	C	1119[A]	-	16,16,16	3.06	5 (31%)	14,22,22	2.41	6 (42%)
2	PRE	D	1118[B]	-	16,16,16	4.50	5 (31%)	11,23,23	1.22	1 (9%)
3	ISJ	D	1121[A]	-	16,16,16	3.07	5 (31%)	14,22,22	2.56	6 (42%)
3	ISJ	B	1119[B]	-	16,16,16	3.02	5 (31%)	14,22,22	2.53	6 (42%)
2	PRE	A	1118[A]	-	16,16,16	4.52	5 (31%)	11,23,23	1.29	1 (9%)
2	PRE	B	1118[A]	-	16,16,16	4.51	5 (31%)	11,23,23	1.25	1 (9%)
3	ISJ	A	1119[B]	-	16,16,16	3.07	5 (31%)	14,22,22	2.46	5 (35%)

In the following table, the Chirals column lists the number of chiral outliers, the number of chiral centers analysed, the number of these observed in the model and the number defined in the Chemical Component Dictionary. Similar counts are reported in the Torsion and Rings columns. '-' means no outliers of that kind were identified.

Mol	Type	Chain	Res	Link	Chirals	Torsions	Rings
2	PRE	D	1119[B]	-	-	5/15/27/27	0/1/1/1
3	ISJ	D	1120[A]	-	-	8/10/25/25	0/1/1/1

Continued on next page...

Continued from previous page...

Mol	Type	Chain	Res	Link	Chirals	Torsions	Rings
2	PRE	C	1118[B]	-	-	0/15/27/27	0/1/1/1
3	ISJ	C	1119[A]	-	-	7/10/25/25	0/1/1/1
2	PRE	D	1118[B]	-	-	3/15/27/27	0/1/1/1
3	ISJ	D	1121[A]	-	-	5/10/25/25	0/1/1/1
3	ISJ	B	1119[B]	-	-	9/10/25/25	0/1/1/1
2	PRE	A	1118[A]	-	-	0/15/27/27	0/1/1/1
2	PRE	B	1118[A]	-	-	4/15/27/27	0/1/1/1
3	ISJ	A	1119[B]	-	-	8/10/25/25	0/1/1/1

All (50) bond length outliers are listed below:

Mol	Chain	Res	Type	Atoms	Z	Observed(Å)	Ideal(Å)
2	A	1118[A]	PRE	C5-C6	11.75	1.49	1.32
2	B	1118[A]	PRE	C5-C6	11.74	1.49	1.32
2	D	1118[B]	PRE	C5-C6	11.72	1.49	1.32
2	C	1118[B]	PRE	C5-C6	11.70	1.49	1.32
2	D	1119[B]	PRE	C3-C2	11.67	1.49	1.32
2	D	1119[B]	PRE	C5-C6	11.67	1.49	1.32
2	A	1118[A]	PRE	C3-C2	11.62	1.49	1.32
2	C	1118[B]	PRE	C3-C2	11.59	1.49	1.32
2	D	1118[B]	PRE	C3-C2	11.56	1.49	1.32
2	B	1118[A]	PRE	C3-C2	11.30	1.49	1.32
3	D	1121[A]	ISJ	C4-C5	8.34	1.49	1.33
3	D	1120[A]	ISJ	C4-C5	8.28	1.49	1.33
3	A	1119[B]	ISJ	C4-C5	8.27	1.49	1.33
3	C	1119[A]	ISJ	C4-C5	8.17	1.49	1.33
3	B	1119[B]	ISJ	C4-C5	8.12	1.49	1.33
3	C	1119[A]	ISJ	C2-C3	6.05	1.49	1.35
3	D	1120[A]	ISJ	C2-C3	5.97	1.48	1.35
3	D	1121[A]	ISJ	C2-C3	5.96	1.48	1.35
3	A	1119[B]	ISJ	C2-C3	5.94	1.48	1.35
3	B	1119[B]	ISJ	C2-C3	5.93	1.48	1.35
3	A	1119[B]	ISJ	O11-C1	-4.40	1.39	1.46
3	D	1120[A]	ISJ	O11-C1	-4.36	1.39	1.46
3	C	1119[A]	ISJ	O11-C1	-4.22	1.39	1.46
3	D	1121[A]	ISJ	O11-C1	-4.14	1.39	1.46
2	A	1118[A]	PRE	C8-C1	-4.12	1.49	1.56
2	B	1118[A]	PRE	C8-C1	-4.12	1.49	1.56
2	B	1118[A]	PRE	C1-C7	-4.05	1.48	1.53
3	B	1119[B]	ISJ	O11-C1	-4.02	1.39	1.46
2	D	1119[B]	PRE	C8-C1	-3.95	1.49	1.56

Continued on next page...

Continued from previous page...

Mol	Chain	Res	Type	Atoms	Z	Observed(Å)	Ideal(Å)
2	C	1118[B]	PRE	C8-C1	-3.92	1.49	1.56
2	D	1119[B]	PRE	C1-C7	-3.87	1.48	1.53
2	D	1118[B]	PRE	C8-C1	-3.86	1.49	1.56
2	C	1118[B]	PRE	C1-C7	-3.80	1.48	1.53
2	D	1118[B]	PRE	C1-C7	-3.62	1.49	1.53
2	A	1118[A]	PRE	C1-C7	-3.47	1.49	1.53
2	B	1118[A]	PRE	C1'-C2'	-3.37	1.49	1.53
2	D	1118[B]	PRE	C1'-C2'	-3.20	1.49	1.53
2	C	1118[B]	PRE	C1'-C2'	-3.15	1.49	1.53
2	A	1118[A]	PRE	C1'-C2'	-3.14	1.49	1.53
2	D	1119[B]	PRE	C1'-C2'	-3.09	1.49	1.53
3	A	1119[B]	ISJ	C4-C3	3.03	1.49	1.43
3	C	1119[A]	ISJ	C4-C3	3.02	1.49	1.43
3	B	1119[B]	ISJ	C4-C3	2.99	1.49	1.43
3	D	1120[A]	ISJ	C4-C3	2.93	1.49	1.43
3	D	1121[A]	ISJ	C4-C3	2.90	1.49	1.43
3	B	1119[B]	ISJ	O10-C6	-2.42	1.38	1.43
3	C	1119[A]	ISJ	O10-C6	-2.33	1.39	1.43
3	A	1119[B]	ISJ	O10-C6	-2.22	1.39	1.43
3	D	1120[A]	ISJ	O10-C6	-2.21	1.39	1.43
3	D	1121[A]	ISJ	O10-C6	-2.11	1.39	1.43

All (34) bond angle outliers are listed below:

Mol	Chain	Res	Type	Atoms	Z	Observed(°)	Ideal(°)
3	D	1121[A]	ISJ	C6-C1-C2	7.02	118.24	110.67
3	D	1120[A]	ISJ	C6-C1-C2	6.71	117.91	110.67
3	A	1119[B]	ISJ	C6-C1-C2	6.18	117.34	110.67
3	B	1119[B]	ISJ	C6-C1-C2	6.07	117.22	110.67
3	C	1119[A]	ISJ	C6-C1-C2	5.52	116.63	110.67
3	A	1119[B]	ISJ	O15-C13-C12	3.78	120.36	113.91
3	D	1120[A]	ISJ	O15-C13-C12	3.66	120.16	113.91
3	B	1119[B]	ISJ	O15-C13-C12	3.59	120.03	113.91
3	C	1119[A]	ISJ	O15-C13-C12	3.50	119.89	113.91
3	D	1121[A]	ISJ	O15-C13-C12	3.23	119.42	113.91
3	C	1119[A]	ISJ	C1-O11-C12	2.92	121.70	117.18
3	B	1119[B]	ISJ	C5-C4-C3	-2.83	118.43	122.35
3	B	1119[B]	ISJ	C1-O11-C12	2.79	121.50	117.18
3	D	1121[A]	ISJ	C1-O11-C12	2.78	121.48	117.18
3	B	1119[B]	ISJ	C16-C12-C13	-2.71	117.72	122.73
3	C	1119[A]	ISJ	C5-C4-C3	-2.61	118.74	122.35
3	A	1119[B]	ISJ	C5-C4-C3	-2.59	118.76	122.35

Continued on next page...

Continued from previous page...

Mol	Chain	Res	Type	Atoms	Z	Observed(°)	Ideal(°)
3	D	1120[A]	ISJ	C1-O11-C12	2.52	121.08	117.18
3	A	1119[B]	ISJ	C1-O11-C12	2.50	121.04	117.18
3	D	1120[A]	ISJ	C5-C4-C3	-2.49	118.90	122.35
3	C	1119[A]	ISJ	C16-C12-C13	-2.48	118.14	122.73
3	D	1120[A]	ISJ	C16-C12-C13	-2.34	118.40	122.73
2	D	1119[B]	PRE	O'M-C2'-C1'	2.31	120.28	113.97
3	C	1119[A]	ISJ	O9-C7-C3	2.27	120.48	114.52
3	B	1119[B]	ISJ	O9-C7-C3	2.24	120.41	114.52
3	D	1121[A]	ISJ	C16-C12-C13	-2.23	118.60	122.73
2	A	1118[A]	PRE	O'M-C2'-C1'	2.16	119.89	113.97
3	D	1121[A]	ISJ	C5-C4-C3	-2.16	119.35	122.35
3	D	1121[A]	ISJ	O11-C12-C13	2.11	120.84	115.59
2	B	1118[A]	PRE	O'M-C2'-C1'	2.10	119.71	113.97
2	C	1118[B]	PRE	O'M-C2'-C1'	2.05	119.57	113.97
3	A	1119[B]	ISJ	C16-C12-C13	-2.04	118.96	122.73
3	D	1120[A]	ISJ	O9-C7-C3	2.03	119.84	114.52
2	D	1118[B]	PRE	O'M-C2'-C1'	2.02	119.51	113.97

There are no chirality outliers.

All (49) torsion outliers are listed below:

Mol	Chain	Res	Type	Atoms
2	D	1118[B]	PRE	C2-C1-C7-O72
2	D	1119[B]	PRE	C8-C1'-C2'-O'M
3	A	1119[B]	ISJ	C2-C1-O11-C12
3	A	1119[B]	ISJ	C4-C3-C7-O9
3	A	1119[B]	ISJ	O11-C12-C13-O15
3	A	1119[B]	ISJ	C16-C12-C13-O14
3	A	1119[B]	ISJ	C16-C12-C13-O15
3	B	1119[B]	ISJ	C2-C1-O11-C12
3	B	1119[B]	ISJ	C4-C3-C7-O8
3	B	1119[B]	ISJ	O11-C12-C13-O15
3	B	1119[B]	ISJ	C16-C12-C13-O14
3	B	1119[B]	ISJ	C16-C12-C13-O15
3	C	1119[A]	ISJ	C2-C1-O11-C12
3	C	1119[A]	ISJ	O11-C12-C13-O15
3	C	1119[A]	ISJ	C16-C12-C13-O14
3	C	1119[A]	ISJ	C16-C12-C13-O15
3	D	1120[A]	ISJ	C2-C1-O11-C12
3	D	1120[A]	ISJ	C4-C3-C7-O9
3	D	1120[A]	ISJ	O11-C12-C13-O14
3	D	1120[A]	ISJ	O11-C12-C13-O15

Continued on next page...

Continued from previous page...

Mol	Chain	Res	Type	Atoms
3	D	1120[A]	ISJ	C16-C12-C13-O14
3	D	1120[A]	ISJ	C16-C12-C13-O15
3	D	1121[A]	ISJ	C2-C1-O11-C12
3	D	1121[A]	ISJ	O11-C12-C13-O14
3	D	1121[A]	ISJ	O11-C12-C13-O15
3	D	1121[A]	ISJ	C16-C12-C13-O14
3	D	1121[A]	ISJ	C16-C12-C13-O15
3	A	1119[B]	ISJ	C4-C3-C7-O8
3	C	1119[A]	ISJ	C4-C3-C7-O8
3	D	1120[A]	ISJ	C4-C3-C7-O8
3	A	1119[B]	ISJ	O11-C12-C13-O14
3	B	1119[B]	ISJ	O11-C12-C13-O14
3	C	1119[A]	ISJ	O11-C12-C13-O14
2	B	1118[A]	PRE	O1'-C1'-C2'-O'L
2	D	1119[B]	PRE	O1'-C1'-C2'-O'L
2	B	1118[A]	PRE	C8-C1'-C2'-O'L
2	D	1119[B]	PRE	C8-C1'-C2'-O'L
2	D	1118[B]	PRE	C8-C1-C7-O71
3	B	1119[B]	ISJ	C4-C3-C7-O9
3	C	1119[A]	ISJ	C4-C3-C7-O9
2	B	1118[A]	PRE	O1'-C1'-C2'-O'M
2	D	1119[B]	PRE	O1'-C1'-C2'-O'M
3	A	1119[B]	ISJ	C2-C3-C7-O9
3	B	1119[B]	ISJ	C2-C3-C7-O8
3	B	1119[B]	ISJ	C2-C3-C7-O9
3	D	1120[A]	ISJ	C2-C3-C7-O9
2	B	1118[A]	PRE	C8-C1'-C2'-O'M
2	D	1118[B]	PRE	C2-C1-C7-O71
2	D	1119[B]	PRE	C6-C1-C7-O71

There are no ring outliers.

10 monomers are involved in 31 short contacts:

Mol	Chain	Res	Type	Clashes	Symm-Clashes
2	D	1119[B]	PRE	2	0
3	D	1120[A]	ISJ	4	0
2	C	1118[B]	PRE	2	0
3	C	1119[A]	ISJ	3	0
2	D	1118[B]	PRE	2	0
3	D	1121[A]	ISJ	5	0
3	B	1119[B]	ISJ	5	0
2	A	1118[A]	PRE	2	0

Continued on next page...

Continued from previous page...

Mol	Chain	Res	Type	Clashes	Symm-Clashes
2	B	1118[A]	PRE	2	0
3	A	1119[B]	ISJ	4	0

5.7 Other polymers [i](#)

There are no such residues in this entry.

5.8 Polymer linkage issues [i](#)

There are no chain breaks in this entry.

6 Fit of model and data [i](#)

6.1 Protein, DNA and RNA chains [i](#)

In the following table, the column labelled '#RSRZ > 2' contains the number (and percentage) of RSRZ outliers, followed by percent RSRZ outliers for the chain as percentile scores relative to all X-ray entries and entries of similar resolution. The OWAB column contains the minimum, median, 95th percentile and maximum values of the occupancy-weighted average B-factor per residue. The column labelled 'Q < 0.9' lists the number of (and percentage) of residues with an average occupancy less than 0.9.

Mol	Chain	Analysed	<RSRZ>	#RSRZ>2	OWAB(Å ²)	Q<0.9
1	A	116/127 (91%)	-0.45	1 (0%) 84 87	8, 16, 31, 59	0
1	B	116/127 (91%)	-0.38	1 (0%) 84 87	8, 16, 34, 59	0
1	C	116/127 (91%)	-0.45	1 (0%) 84 87	7, 16, 35, 64	0
1	D	116/127 (91%)	-0.43	1 (0%) 84 87	7, 17, 35, 62	0
1	E	116/127 (91%)	-0.47	1 (0%) 84 87	7, 15, 33, 53	0
1	F	116/127 (91%)	-0.33	2 (1%) 70 74	8, 19, 37, 71	0
All	All	696/762 (91%)	-0.42	7 (1%) 82 85	7, 17, 35, 71	0

All (7) RSRZ outliers are listed below:

Mol	Chain	Res	Type	RSRZ
1	B	117	PRO	4.6
1	C	117	PRO	4.6
1	D	117	PRO	4.3
1	F	117	PRO	4.1
1	F	1	MET	3.0
1	A	117	PRO	2.7
1	E	117	PRO	2.6

6.2 Non-standard residues in protein, DNA, RNA chains [i](#)

In the following table, the Atoms column lists the number of modelled atoms in the group and the number defined in the chemical component dictionary. The B-factors column lists the minimum, median, 95th percentile and maximum values of B factors of atoms in the group. The column labelled 'Q < 0.9' lists the number of atoms with occupancy less than 0.9.

Mol	Type	Chain	Res	Atoms	RSCC	RSR	B-factors(Å ²)	Q<0.9
1	CIR	D	90	11/12	0.93	0.10	9,12,35,41	0
1	CIR	C	90	11/12	0.94	0.09	5,9,20,21	0

Continued on next page...

Continued from previous page...

Mol	Type	Chain	Res	Atoms	RSCC	RSR	B-factors(\AA^2)	Q<0.9
1	CIR	B	90	11/12	0.94	0.09	7,11,29,30	0
1	CIR	A	90	11/12	0.95	0.08	8,11,31,33	0
1	CIR	F	90	11/12	0.95	0.08	9,13,41,49	0
1	CIR	E	90	11/12	0.97	0.08	6,10,23,28	0

6.3 Carbohydrates [i](#)

There are no monosaccharides in this entry.

6.4 Ligands [i](#)

In the following table, the Atoms column lists the number of modelled atoms in the group and the number defined in the chemical component dictionary. The B-factors column lists the minimum, median, 95th percentile and maximum values of B factors of atoms in the group. The column labelled 'Q< 0.9' lists the number of atoms with occupancy less than 0.9.

Mol	Type	Chain	Res	Atoms	RSCC	RSR	B-factors(\AA^2)	Q<0.9
2	PRE	D	1118[B]	16/16	0.76	0.31	6,17,23,25	16
2	PRE	C	1118[B]	16/16	0.81	0.27	13,20,23,24	16
3	ISJ	C	1119[A]	16/16	0.83	0.28	13,20,22,25	16
3	ISJ	D	1120[A]	16/16	0.83	0.32	9,17,23,25	16
2	PRE	A	1118[A]	16/16	0.84	0.19	6,17,25,26	16
3	ISJ	D	1121[A]	16/16	0.85	0.23	11,16,21,22	16
2	PRE	D	1119[B]	16/16	0.86	0.21	2,14,18,19	16
3	ISJ	A	1119[B]	16/16	0.87	0.22	11,22,27,28	16
2	PRE	B	1118[A]	16/16	0.87	0.18	8,17,22,24	16
3	ISJ	B	1119[B]	16/16	0.90	0.22	13,18,23,24	16

6.5 Other polymers [i](#)

There are no such residues in this entry.