



# Full wwPDB X-ray Structure Validation Report ⓘ

Dec 17, 2023 – 08:17 am GMT

PDB ID : 3ZDX  
Title : Integrin alphaIIB beta3 headpiece and RGD peptide complex  
Authors : Zhu, J.H.; Zhu, J.Q.; Springer, T.A.  
Deposited on : 2012-12-03  
Resolution : 2.45 Å(reported)

This is a Full wwPDB X-ray Structure Validation Report for a publicly released PDB entry.

We welcome your comments at [validation@mail.wwpdb.org](mailto:validation@mail.wwpdb.org)

A user guide is available at

<https://www.wwpdb.org/validation/2017/XrayValidationReportHelp>

with specific help available everywhere you see the ⓘ symbol.

The types of validation reports are described at

<http://www.wwpdb.org/validation/2017/FAQs#types>.

---

The following versions of software and data (see [references ⓘ](#)) were used in the production of this report:

MolProbity : 4.02b-467  
Mogul : 1.8.4, CSD as541be (2020)  
Xtrriage (Phenix) : 1.13  
EDS : 2.36  
Percentile statistics : 20191225.v01 (using entries in the PDB archive December 25th 2019)  
Refmac : 5.8.0158  
CCP4 : 7.0.044 (Gargrove)  
Ideal geometry (proteins) : Engh & Huber (2001)  
Ideal geometry (DNA, RNA) : Parkinson et al. (1996)  
Validation Pipeline (wwPDB-VP) : 2.36

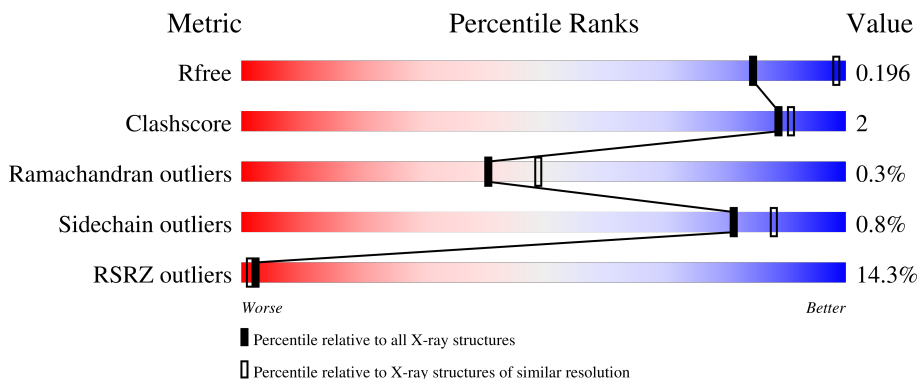
# 1 Overall quality at a glance

The following experimental techniques were used to determine the structure:

*X-RAY DIFFRACTION*

The reported resolution of this entry is 2.45 Å.

Percentile scores (ranging between 0-100) for global validation metrics of the entry are shown in the following graphic. The table shows the number of entries on which the scores are based.



Metric	Whole archive (#Entries)	Similar resolution (#Entries, resolution range(Å))
$R_{free}$	130704	1544 (2.48-2.44)
Clashscore	141614	1613 (2.48-2.44)
Ramachandran outliers	138981	1598 (2.48-2.44)
Sidechain outliers	138945	1598 (2.48-2.44)
RSRZ outliers	127900	1523 (2.48-2.44)

The table below summarises the geometric issues observed across the polymeric chains and their fit to the electron density. The red, orange, yellow and green segments of the lower bar indicate the fraction of residues that contain outliers for  $\geq 3$ , 2, 1 and 0 types of geometric quality criteria respectively. A grey segment represents the fraction of residues that are not modelled. The numeric value for each fraction is indicated below the corresponding segment, with a dot representing fractions  $\leq 5\%$ . The upper red bar (where present) indicates the fraction of residues that have poor fit to the electron density. The numeric value is given above the bar.

Mol	Chain	Length	Quality of chain
1	A	457	 2% 96% 5%
1	C	457	 2% 93% 5%
2	B	472	 17% 93% 5%
2	D	472	 10% 94% 5%
3	E	221	 38% 90% 7%

Continued on next page...

Continued from previous page...

Mol	Chain	Length	Quality of chain
3	H	221	
4	F	214	
4	L	214	
5	G	5	
6	I	2	
6	K	2	
7	J	4	

The following table lists non-polymeric compounds, carbohydrate monomers and non-standard residues in protein, DNA, RNA chains that are outliers for geometric or electron-density-fit criteria:

Mol	Type	Chain	Res	Chirality	Geometry	Clashes	Electron density
11	CL	B	1468	-	-	X	-

## 2 Entry composition

There are 14 unique types of molecules in this entry. The entry contains 42688 atoms, of which 20255 are hydrogens and 0 are deuteriums.

In the tables below, the ZeroOcc column contains the number of atoms modelled with zero occupancy, the AltConf column contains the number of residues with at least one atom in alternate conformation and the Trace column contains the number of residues modelled with at most 2 atoms.

- Molecule 1 is a protein called INTEGRIN ALPHA-IIB.

Mol	Chain	Residues	Atoms						ZeroOcc	AltConf	Trace
			Total	C	H	N	O	S			
1	A	457	Total	C	H	N	O	S	0	9	0
			6904	2248	3369	606	673	8			
1	C	453	Total	C	H	N	O	S	0	3	0
			6807	2218	3317	601	663	8			

- Molecule 2 is a protein called INTEGRIN BETA-3.

Mol	Chain	Residues	Atoms						ZeroOcc	AltConf	Trace
			Total	C	H	N	O	S			
2	B	464	Total	C	H	N	O	S	6	5	0
			7132	2248	3525	615	710	34			
2	D	469	Total	C	H	N	O	S	10	1	0
			7154	2258	3531	618	713	34			

- Molecule 3 is a protein called 10E5 FAB, HEAVY CHAIN.

Mol	Chain	Residues	Atoms						ZeroOcc	AltConf	Trace
			Total	C	H	N	O	S			
3	E	216	Total	C	H	N	O	S	0	0	0
			3239	1041	1597	266	329	6			
3	H	216	Total	C	H	N	O	S	0	0	0
			3239	1041	1597	266	329	6			

- Molecule 4 is a protein called 10E5 FAB, LIGHT CHAIN.

Mol	Chain	Residues	Atoms						ZeroOcc	AltConf	Trace
			Total	C	H	N	O	S			
4	F	214	Total	C	H	N	O	S	0	0	0
			3187	1019	1550	268	341	9			
4	L	214	Total	C	H	N	O	S	0	0	0
			3187	1019	1550	268	341	9			

- Molecule 5 is an oligosaccharide called alpha-D-mannopyranose-(1-3)-[alpha-D-mannopyranose-(1-6)]beta-D-mannopyranose-(1-4)-2-acetamido-2-deoxy-beta-D-glucopyranose-(1-4)-2-acetamido-2-deoxy-beta-D-glucopyranose.



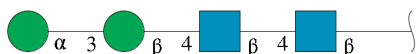
Mol	Chain	Residues	Atoms					ZeroOcc	AltConf	Trace
			Total	C	H	N	O			
5	G	5	113	34	52	2	25	0	0	0

- Molecule 6 is an oligosaccharide called 2-acetamido-2-deoxy-beta-D-glucopyranose-(1-4)-2-acetamido-2-deoxy-beta-D-glucopyranose.



Mol	Chain	Residues	Atoms					ZeroOcc	AltConf	Trace
			Total	C	H	N	O			
6	I	2	53	16	25	2	10	0	0	0
6	K	2	53	16	25	2	10	0	0	0

- Molecule 7 is an oligosaccharide called alpha-D-mannopyranose-(1-3)-beta-D-mannopyranose-(1-4)-2-acetamido-2-deoxy-beta-D-glucopyranose-(1-4)-2-acetamido-2-deoxy-beta-D-glucopyranose.



Mol	Chain	Residues	Atoms					ZeroOcc	AltConf	Trace
			Total	C	H	N	O			
7	J	4	93	28	43	2	20	0	0	0

- Molecule 8 is GLYCEROL (three-letter code: GOL) (formula: C<sub>3</sub>H<sub>8</sub>O<sub>3</sub>).



Mol	Chain	Residues	Atoms				ZeroOcc	AltConf
			Total	C	H	O		
8	A	1	14	3	8	3	0	0
8	A	1	14	3	8	3	0	0
8	A	1	14	3	8	3	0	0
8	B	1	14	3	8	3	0	0
8	C	1	14	3	8	3	0	0
8	C	1	14	3	8	3	0	0

- Molecule 9 is SULFATE ION (three-letter code: SO4) (formula: O<sub>4</sub>S).



Mol	Chain	Residues	Atoms	ZeroOcc	AltConf
9	A	1	Total O S 5 4 1	0	0
9	A	1	Total O S 5 4 1	0	0
9	C	1	Total O S 5 4 1	0	0
9	C	1	Total O S 5 4 1	0	0
9	C	1	Total O S 5 4 1	0	0
9	C	1	Total O S 5 4 1	0	0
9	C	1	Total O S 5 4 1	0	0
9	D	1	Total O S 5 4 1	0	0
9	D	1	Total O S 5 4 1	0	0
9	L	1	Total O S 5 4 1	0	0

- Molecule 10 is CALCIUM ION (three-letter code: CA) (formula: Ca).

Mol	Chain	Residues	Atoms	ZeroOcc	AltConf
10	A	4	Total Ca 4 4	0	0
10	C	4	Total Ca 4 4	0	0

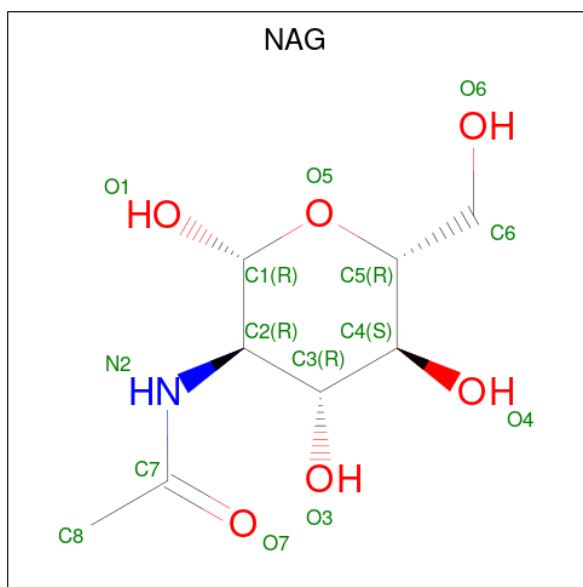
- Molecule 11 is CHLORIDE ION (three-letter code: CL) (formula: Cl).

Mol	Chain	Residues	Atoms	ZeroOcc	AltConf
11	B	1	Total Cl 1 1	0	0

- Molecule 12 is MANGANESE (II) ION (three-letter code: MN) (formula: Mn).

Mol	Chain	Residues	Atoms	ZeroOcc	AltConf
12	B	3	Total Mn 3 3	0	0
12	D	3	Total Mn 3 3	0	0

- Molecule 13 is 2-acetamido-2-deoxy-beta-D-glucopyranose (three-letter code: NAG) (formula: C<sub>8</sub>H<sub>15</sub>NO<sub>6</sub>).



Mol	Chain	Residues	Atoms	ZeroOcc	AltConf
13	B	1	Total C H N O 27 8 13 1 5	0	0
13	D	1	Total C H N O 27 8 13 1 5	0	0

- Molecule 14 is water.

Mol	Chain	Residues	Atoms	ZeroOcc	AltConf
14	A	527	Total O 527 527	0	0

*Continued on next page...*



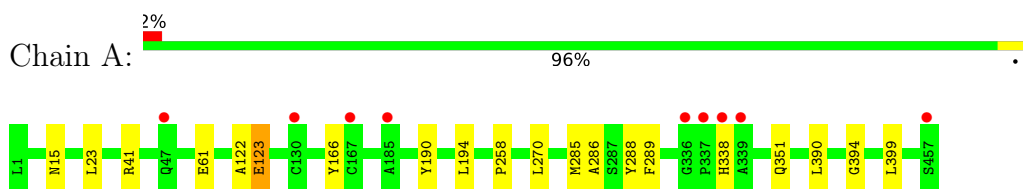
*Continued from previous page...*

<b>Mol</b>	<b>Chain</b>	<b>Residues</b>	<b>Atoms</b>		<b>ZeroOcc</b>	<b>AltConf</b>
14	B	221	Total 221	O 221	0	0
14	C	307	Total 307	O 307	0	0
14	D	177	Total 177	O 177	0	0
14	E	11	Total 11	O 11	0	0
14	F	8	Total 8	O 8	0	0
14	H	39	Total 39	O 39	0	0
14	L	34	Total 34	O 34	0	0

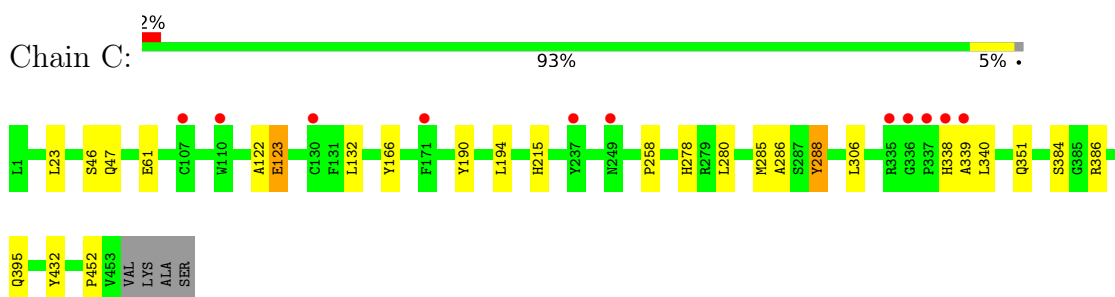
### 3 Residue-property plots

These plots are drawn for all protein, RNA, DNA and oligosaccharide chains in the entry. The first graphic for a chain summarises the proportions of the various outlier classes displayed in the second graphic. The second graphic shows the sequence view annotated by issues in geometry and electron density. Residues are color-coded according to the number of geometric quality criteria for which they contain at least one outlier: green = 0, yellow = 1, orange = 2 and red = 3 or more. A red dot above a residue indicates a poor fit to the electron density ( $RSRZ > 2$ ). Stretches of 2 or more consecutive residues without any outlier are shown as a green connector. Residues present in the sample, but not in the model, are shown in grey.

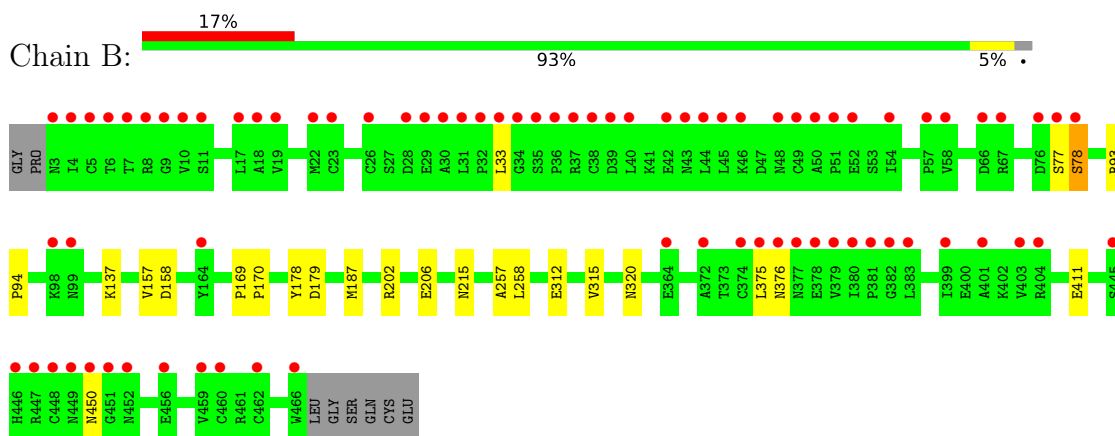
- Molecule 1: INTEGRIN ALPHA-IIB



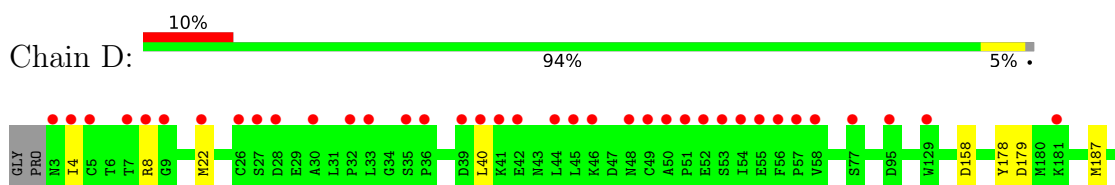
- Molecule 1: INTEGRIN ALPHA-IIB

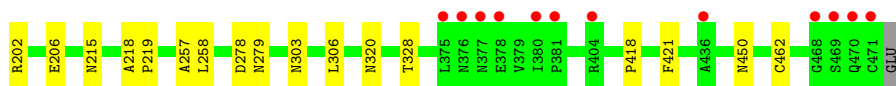


- Molecule 2: INTEGRIN BETA-3

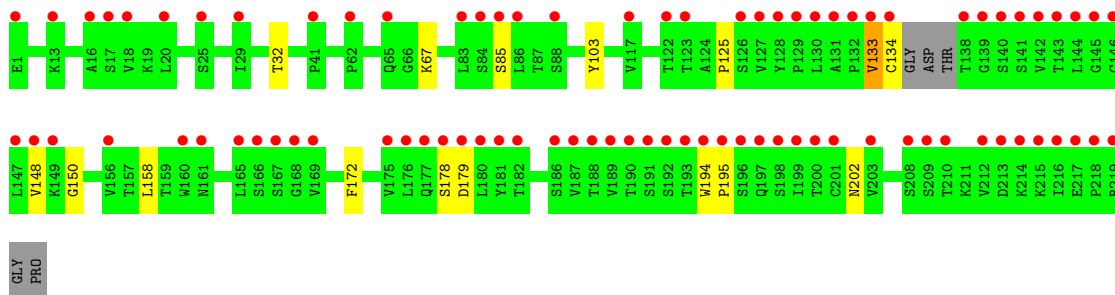
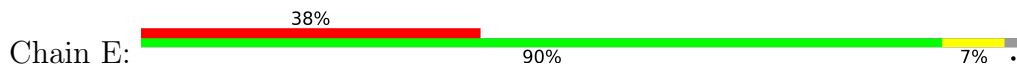


- Molecule 2: INTEGRIN BETA-3

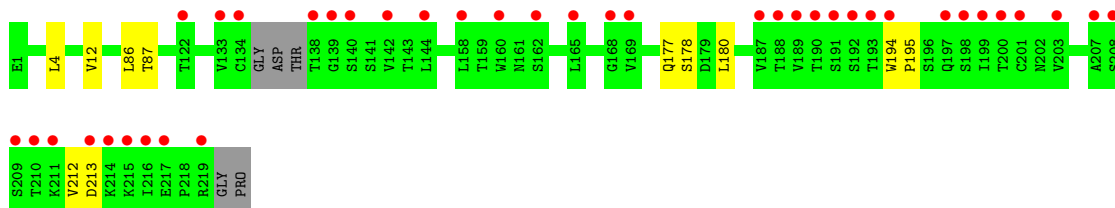




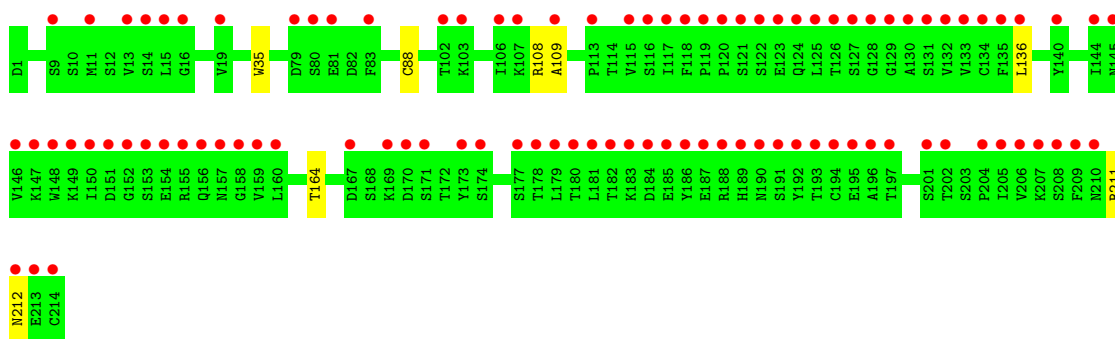
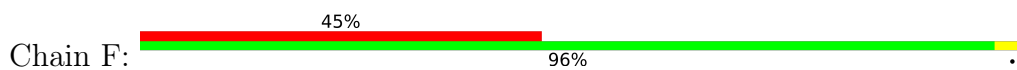
- Molecule 3: 10E5 FAB, HEAVY CHAIN



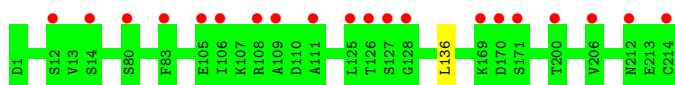
- Molecule 3: 10E5 FAB, HEAVY CHAIN




- Molecule 4: 10E5 FAB, LIGHT CHAIN



- Molecule 4: 10E5 FAB, LIGHT CHAIN



- Molecule 5: alpha-D-mannopyranose-(1-3)-[alpha-D-mannopyranose-(1-6)]beta-D-mannopyranose-(1-4)-2-acetamido-2-deoxy-beta-D-glucopyranose-(1-4)-2-acetamido-2-deoxy-beta-D-glucopyranose

Chain G:  80% 20%

MAG1  
MAG2  
BMA3  
MAN4  
MAN5

- Molecule 6: 2-acetamido-2-deoxy-beta-D-glucopyranose-(1-4)-2-acetamido-2-deoxy-beta-D-glucopyranose

Chain I:  100%

MAG1  
MAG2

- Molecule 6: 2-acetamido-2-deoxy-beta-D-glucopyranose-(1-4)-2-acetamido-2-deoxy-beta-D-glucopyranose

Chain K:  100%

MAG1  
MAG2

- Molecule 7: alpha-D-mannopyranose-(1-3)-beta-D-mannopyranose-(1-4)-2-acetamido-2-deoxy-beta-D-glucopyranose-(1-4)-2-acetamido-2-deoxy-beta-D-glucopyranose

Chain J:  75% 25%

MAG1  
MAG2  
BMA3  
MAN4

## 4 Data and refinement statistics

Property	Value	Source
Space group	P 21 21 2	Depositor
Cell constants a, b, c, $\alpha$ , $\beta$ , $\gamma$	259.71Å 144.96Å 104.77Å 90.00° 90.00° 90.00°	Depositor
Resolution (Å)	48.36 – 2.45 48.36 – 2.45	Depositor EDS
% Data completeness (in resolution range)	99.9 (48.36-2.45) 99.9 (48.36-2.45)	Depositor EDS
$R_{merge}$	0.15	Depositor
$R_{sym}$	(Not available)	Depositor
$\langle I/\sigma(I) \rangle$ <sup>1</sup>	2.55 (at 2.45Å)	Xtrriage
Refinement program	PHENIX (PHENIX.REFINE)	Depositor
R, $R_{free}$	0.163 , 0.197 0.157 , 0.196	Depositor DCC
$R_{free}$ test set	1008 reflections (0.69%)	wwPDB-VP
Wilson B-factor (Å <sup>2</sup> )	35.4	Xtrriage
Anisotropy	0.233	Xtrriage
Bulk solvent $k_{sol}$ (e/Å <sup>3</sup> ), $B_{sol}$ (Å <sup>2</sup> )	0.36 , 61.7	EDS
L-test for twinning <sup>2</sup>	$\langle  L  \rangle = 0.49$ , $\langle L^2 \rangle = 0.32$	Xtrriage
Estimated twinning fraction	No twinning to report.	Xtrriage
$F_o, F_c$ correlation	0.96	EDS
Total number of atoms	42688	wwPDB-VP
Average B, all atoms (Å <sup>2</sup> )	59.0	wwPDB-VP

Xtrriage's analysis on translational NCS is as follows: *The largest off-origin peak in the Patterson function is 2.18% of the height of the origin peak. No significant pseudotranslation is detected.*

<sup>1</sup>Intensities estimated from amplitudes.

<sup>2</sup>Theoretical values of  $\langle |L| \rangle$ ,  $\langle L^2 \rangle$  for acentric reflections are 0.5, 0.333 respectively for untwinned datasets, and 0.375, 0.2 for perfectly twinned datasets.

## 5 Model quality [i](#)

### 5.1 Standard geometry [i](#)

Bond lengths and bond angles in the following residue types are not validated in this section: GOL, CA, NAG, MAN, CL, BMA, SO4, MN

The Z score for a bond length (or angle) is the number of standard deviations the observed value is removed from the expected value. A bond length (or angle) with  $|Z| > 5$  is considered an outlier worth inspection. RMSZ is the root-mean-square of all Z scores of the bond lengths (or angles).

Mol	Chain	Bond lengths		Bond angles	
		RMSZ	# Z  >5	RMSZ	# Z  >5
1	A	0.25	0/3659	0.43	0/4987
1	C	0.23	0/3596	0.41	0/4900
2	B	0.22	0/3685	0.40	0/4996
2	D	0.22	0/3694	0.39	0/5009
3	E	0.21	0/1684	0.39	0/2305
3	H	0.22	0/1684	0.40	0/2305
4	F	0.21	0/1673	0.38	0/2269
4	L	0.22	0/1673	0.39	0/2269
All	All	0.23	0/21348	0.40	0/29040

There are no bond length outliers.

There are no bond angle outliers.

There are no chirality outliers.

There are no planarity outliers.

### 5.2 Too-close contacts [i](#)

In the following table, the Non-H and H(model) columns list the number of non-hydrogen atoms and hydrogen atoms in the chain respectively. The H(added) column lists the number of hydrogen atoms added and optimized by MolProbity. The Clashes column lists the number of clashes within the asymmetric unit, whereas Symm-Clashes lists symmetry-related clashes.

Mol	Chain	Non-H	H(model)	H(added)	Clashes	Symm-Clashes
1	A	3535	3369	3386	13	0
1	C	3490	3317	3328	18	1
2	B	3607	3525	3534	15	0
2	D	3623	3531	3537	12	0
3	E	1642	1597	1600	9	0

*Continued on next page...*

*Continued from previous page...*

Mol	Chain	Non-H	H(model)	H(added)	Clashes	Symm-Clashes
3	H	1642	1597	1600	6	0
4	F	1637	1550	1553	5	0
4	L	1637	1550	1553	1	0
5	G	61	52	52	0	0
6	I	28	25	25	0	0
6	K	28	25	25	0	0
7	J	50	43	43	0	0
8	A	18	24	24	0	0
8	B	6	8	8	0	0
8	C	12	16	16	1	0
9	A	10	0	0	0	0
9	C	25	0	0	0	0
9	D	10	0	0	0	0
9	L	5	0	0	0	0
10	A	4	0	0	0	0
10	C	4	0	0	0	0
11	B	1	0	0	3	0
12	B	3	0	0	0	0
12	D	3	0	0	0	0
13	B	14	13	13	0	0
13	D	14	13	13	0	0
14	A	527	0	0	5	4
14	B	221	0	0	4	0
14	C	307	0	0	4	3
14	D	177	0	0	0	0
14	E	11	0	0	0	0
14	F	8	0	0	0	0
14	H	39	0	0	0	0
14	L	34	0	0	0	0
All	All	22433	20255	20310	78	4

The all-atom clashscore is defined as the number of clashes found per 1000 atoms (including hydrogen atoms). The all-atom clashscore for this structure is 2.

All (78) close contacts within the same asymmetric unit are listed below, sorted by their clash magnitude.

Atom-1	Atom-2	Interatomic distance (Å)	Clash overlap (Å)
11:B:1468:CL:CL	14:B:4039:HOH:O	2.25	0.92
11:B:1468:CL:CL	14:B:4040:HOH:O	2.29	0.86
11:B:1468:CL:CL	14:B:4124:HOH:O	2.32	0.83
1:A:41:ARG:NH2	14:A:4043:HOH:O	2.23	0.71

*Continued on next page...*

*Continued from previous page...*

Atom-1	Atom-2	Interatomic distance (Å)	Clash overlap (Å)
1:C:395:GLN:OE1	14:C:4265:HOH:O	2.11	0.69
1:C:338:HIS:O	14:C:4178:HOH:O	2.13	0.67
1:A:15[A]:ASN:ND2	14:A:4033:HOH:O	2.29	0.66
1:A:338:HIS:O	14:A:4402:HOH:O	2.12	0.66
2:D:202:ARG:NH2	2:D:206:GLU:OE2	2.30	0.64
1:C:384:SER:OG	14:C:4254:HOH:O	2.17	0.58
3:H:177:GLN:N	3:H:180:LEU:O	2.38	0.57
1:A:122:ALA:O	1:A:123:GLU:HB2	2.05	0.56
2:B:77:SER:O	2:B:78:SER:HB3	2.04	0.56
1:C:122:ALA:O	1:C:123:GLU:HB2	2.05	0.56
3:H:213:ASP:OD1	3:H:213:ASP:N	2.38	0.56
2:D:257:ALA:O	2:D:258:LEU:HB2	2.07	0.55
2:B:137:LYS:NZ	14:B:4060:HOH:O	2.40	0.54
3:H:194:TRP:CG	3:H:195:PRO:HA	2.43	0.54
1:A:351:GLN:OE1	14:A:4418:HOH:O	2.19	0.53
3:E:67:LYS:NZ	3:E:85:SER:O	2.42	0.53
2:B:169:PRO:HD2	2:B:178:TYR:CZ	2.46	0.50
2:B:202:ARG:NH2	2:B:206:GLU:OE2	2.46	0.48
1:C:122:ALA:O	1:C:123:GLU:CB	2.61	0.48
8:C:1454:GOL:O3	8:C:1454:GOL:O1	2.30	0.48
2:D:158:ASP:HB3	2:D:187:MET:CE	2.43	0.48
2:B:312:GLU:HA	2:B:315:VAL:HG23	1.95	0.48
2:B:257:ALA:O	2:B:258:LEU:HB2	2.14	0.47
2:D:450:ASN:O	2:D:450:ASN:ND2	2.47	0.47
1:A:122:ALA:O	1:A:123:GLU:CB	2.63	0.47
2:B:450:ASN:O	2:B:450:ASN:ND2	2.47	0.47
1:C:46:SER:O	1:C:47:GLN:HB2	2.15	0.47
4:F:136:LEU:HD12	4:F:136:LEU:N	2.30	0.46
2:B:93:ARG:HB2	2:B:94:PRO:HD2	1.97	0.46
3:E:133:VAL:O	3:E:134:CYS:SG	2.73	0.46
2:B:158:ASP:HB3	2:B:187[A]:MET:CE	2.45	0.46
1:C:285:MET:SD	2:D:320:ASN:HB3	2.56	0.46
2:B:169:PRO:HB2	2:B:170:PRO:HD2	1.98	0.45
1:C:215:HIS:CE1	3:E:103:TYR:CE1	3.04	0.45
2:D:178:TYR:CG	2:D:179:ASP:N	2.84	0.45
2:D:218:ALA:HB3	2:D:219:PRO:HD3	1.98	0.45
3:H:12:VAL:HG21	3:H:86:LEU:CD1	2.47	0.45
4:L:136:LEU:HD12	4:L:136:LEU:N	2.32	0.45
1:C:258:PRO:HB2	1:C:288:TYR:CD2	2.52	0.45
1:C:194:LEU:C	1:C:194:LEU:HD12	2.38	0.44
1:A:194:LEU:HD12	1:A:194:LEU:C	2.37	0.44

*Continued on next page...*



Continued from previous page...

Atom-1	Atom-2	Interatomic distance (Å)	Clash overlap (Å)
3:E:172:PHE:CD2	4:F:164:THR:HG23	2.52	0.44
3:E:194:TRP:CG	3:E:195:PRO:HA	2.52	0.44
2:B:376:ASN:ND2	2:B:376:ASN:O	2.51	0.44
1:C:432:TYR:CZ	1:C:452:PRO:HA	2.52	0.44
1:C:278[A]:HIS:CE1	1:C:340:LEU:O	2.71	0.43
3:H:212:VAL:HG12	3:H:213:ASP:N	2.34	0.43
2:B:77:SER:O	2:B:78:SER:CB	2.65	0.42
2:D:418:PRO:HB2	2:D:421:PHE:CD1	2.53	0.42
3:E:178:SER:O	3:E:179:ASP:HB2	2.20	0.42
1:C:351:GLN:OE1	14:C:4228:HOH:O	2.22	0.42
2:D:4:ILE:O	2:D:8:ARG:HG2	2.19	0.42
2:D:306:LEU:HB3	2:D:328:THR:HG22	2.01	0.42
4:F:211:ARG:O	4:F:212:ASN:HB2	2.20	0.42
1:C:278[A]:HIS:CD2	1:C:339:ALA:HB1	2.55	0.42
2:B:178:TYR:CG	2:B:179:ASP:N	2.87	0.42
1:A:258:PRO:HA	1:A:289:PHE:O	2.20	0.41
1:A:285:MET:O	1:A:286:ALA:HB3	2.20	0.41
1:C:280:LEU:CD1	1:C:306:LEU:HD23	2.51	0.41
1:C:132:LEU:N	1:C:132:LEU:HD12	2.36	0.41
4:F:35:TRP:CZ3	4:F:88:CYS:HB3	2.56	0.41
1:C:215:HIS:CE1	3:E:32:THR:HG22	2.55	0.41
1:C:285:MET:O	1:C:286:ALA:HB3	2.20	0.41
1:A:285:MET:SD	2:B:320:ASN:HB3	2.61	0.41
1:A:390:LEU:HD12	1:A:390:LEU:N	2.35	0.41
1:A:394:GLY:HA2	1:A:399:LEU:HD23	2.03	0.41
2:B:157:VAL:HG11	2:B:187[B]:MET:SD	2.60	0.41
2:D:22:MET:HG2	2:D:40:LEU:CD2	2.51	0.41
3:E:125:PRO:HB2	3:E:148:VAL:HG13	2.03	0.41
4:F:108:ARG:HG2	4:F:109:ALA:N	2.36	0.40
3:E:158:LEU:HD23	3:E:158:LEU:C	2.42	0.40
3:H:4:LEU:HD12	3:H:4:LEU:N	2.37	0.40
1:A:41:ARG:NH1	14:A:4070:HOH:O	2.54	0.40
2:D:278:ASP:O	2:D:279:ASN:HB2	2.21	0.40

All (4) symmetry-related close contacts are listed below. The label for Atom-2 includes the symmetry operator and encoded unit-cell translations to be applied.

Atom-1	Atom-2	Interatomic distance (Å)	Clash overlap (Å)
14:A:4459:HOH:O	14:C:4260:HOH:O[1_554]	1.92	0.28
14:A:4459:HOH:O	14:C:4282:HOH:O[1_554]	1.99	0.21

Continued on next page...

Continued from previous page...

Atom-1	Atom-2	Interatomic distance (Å)	Clash overlap (Å)
14:A:4480:HOH:O	14:C:4279:HOH:O[1_554]	2.09	0.11
1:C:386:ARG:NH1	14:A:4485:HOH:O[1_556]	2.16	0.04

## 5.3 Torsion angles [i](#)

### 5.3.1 Protein backbone [i](#)

In the following table, the Percentiles column shows the percent Ramachandran outliers of the chain as a percentile score with respect to all X-ray entries followed by that with respect to entries of similar resolution.

The Analysed column shows the number of residues for which the backbone conformation was analysed, and the total number of residues.

Mol	Chain	Analysed	Favoured	Allowed	Outliers	Percentiles
1	A	464/457 (102%)	446 (96%)	17 (4%)	1 (0%)	47 57
1	C	454/457 (99%)	441 (97%)	12 (3%)	1 (0%)	47 57
2	B	467/472 (99%)	444 (95%)	20 (4%)	3 (1%)	25 29
2	D	468/472 (99%)	451 (96%)	17 (4%)	0	100 100
3	E	212/221 (96%)	200 (94%)	10 (5%)	2 (1%)	17 19
3	H	212/221 (96%)	200 (94%)	11 (5%)	1 (0%)	29 34
4	F	212/214 (99%)	204 (96%)	8 (4%)	0	100 100
4	L	212/214 (99%)	203 (96%)	9 (4%)	0	100 100
All	All	2701/2728 (99%)	2589 (96%)	104 (4%)	8 (0%)	41 49

All (8) Ramachandran outliers are listed below:

Mol	Chain	Res	Type
1	A	123	GLU
2	B	33	LEU
2	B	78	SER
2	B	375	LEU
3	E	133	VAL
1	C	123	GLU
3	H	178	SER
3	E	150	GLY

### 5.3.2 Protein sidechains [i](#)

In the following table, the Percentiles column shows the percent sidechain outliers of the chain as a percentile score with respect to all X-ray entries followed by that with respect to entries of similar resolution.

The Analysed column shows the number of residues for which the sidechain conformation was analysed, and the total number of residues.

Mol	Chain	Analysed	Rotameric	Outliers	Percentiles	
1	A	372/364 (102%)	366 (98%)	6 (2%)	62	74
1	C	364/364 (100%)	359 (99%)	5 (1%)	67	77
2	B	416/417 (100%)	414 (100%)	2 (0%)	88	93
2	D	416/417 (100%)	413 (99%)	3 (1%)	84	90
3	E	187/190 (98%)	186 (100%)	1 (0%)	88	93
3	H	187/190 (98%)	186 (100%)	1 (0%)	88	93
4	F	188/188 (100%)	188 (100%)	0	100	100
4	L	188/188 (100%)	188 (100%)	0	100	100
All	All	2318/2318 (100%)	2300 (99%)	18 (1%)	81	88

All (18) residues with a non-rotameric sidechain are listed below:

Mol	Chain	Res	Type
1	A	23	LEU
1	A	61	GLU
1	A	166	TYR
1	A	190	TYR
1	A	270	LEU
1	A	288	TYR
2	B	215	ASN
2	B	411	GLU
1	C	23	LEU
1	C	61	GLU
1	C	166	TYR
1	C	190	TYR
1	C	288	TYR
2	D	215	ASN
2	D	303	ASN
2	D	462	CYS
3	E	202	ASN
3	H	87	THR

Sometimes sidechains can be flipped to improve hydrogen bonding and reduce clashes. All (3) such sidechains are listed below:

Mol	Chain	Res	Type
2	B	3	ASN
1	C	158	ASN
3	E	202	ASN

### 5.3.3 RNA [i](#)

There are no RNA molecules in this entry.

### 5.4 Non-standard residues in protein, DNA, RNA chains [i](#)

There are no non-standard protein/DNA/RNA residues in this entry.

### 5.5 Carbohydrates [i](#)

13 monosaccharides are modelled in this entry.

In the following table, the Counts columns list the number of bonds (or angles) for which Mogul statistics could be retrieved, the number of bonds (or angles) that are observed in the model and the number of bonds (or angles) that are defined in the Chemical Component Dictionary. The Link column lists molecule types, if any, to which the group is linked. The Z score for a bond length (or angle) is the number of standard deviations the observed value is removed from the expected value. A bond length (or angle) with  $|Z| > 2$  is considered an outlier worth inspection. RMSZ is the root-mean-square of all Z scores of the bond lengths (or angles).

Mol	Type	Chain	Res	Link	Bond lengths			Bond angles		
					Counts	RMSZ	$\# Z  > 2$	Counts	RMSZ	$\# Z  > 2$
5	NAG	G	1	5,2	14,14,15	0.56	0	17,19,21	0.72	0
5	NAG	G	2	5	14,14,15	0.59	0	17,19,21	0.68	0
5	BMA	G	3	5	11,11,12	0.63	0	15,15,17	0.99	1 (6%)
5	MAN	G	4	5	11,11,12	0.59	0	15,15,17	0.87	0
5	MAN	G	5	5	11,11,12	0.61	0	15,15,17	0.60	0
6	NAG	I	1	2,6	14,14,15	0.58	0	17,19,21	0.70	0
6	NAG	I	2	6	14,14,15	0.55	0	17,19,21	0.64	0
7	NAG	J	1	7,2	14,14,15	0.52	0	17,19,21	0.65	0
7	NAG	J	2	7	14,14,15	0.60	0	17,19,21	0.77	0
7	BMA	J	3	7	11,11,12	0.66	0	15,15,17	0.93	1 (6%)
7	MAN	J	4	7	11,11,12	0.65	0	15,15,17	0.73	0
6	NAG	K	1	2,6	14,14,15	0.63	0	17,19,21	0.87	0
6	NAG	K	2	6	14,14,15	0.54	0	17,19,21	0.62	0

In the following table, the Chirals column lists the number of chiral outliers, the number of chiral centers analysed, the number of these observed in the model and the number defined in the Chemical Component Dictionary. Similar counts are reported in the Torsion and Rings columns. '-' means no outliers of that kind were identified.

Mol	Type	Chain	Res	Link	Chirals	Torsions	Rings
5	NAG	G	1	5,2	-	0/6/23/26	0/1/1/1
5	NAG	G	2	5	-	0/6/23/26	0/1/1/1
5	BMA	G	3	5	-	2/2/19/22	0/1/1/1
5	MAN	G	4	5	-	0/2/19/22	0/1/1/1
5	MAN	G	5	5	-	1/2/19/22	0/1/1/1
6	NAG	I	1	2,6	-	0/6/23/26	0/1/1/1
6	NAG	I	2	6	-	1/6/23/26	0/1/1/1
7	NAG	J	1	7,2	-	0/6/23/26	0/1/1/1
7	NAG	J	2	7	-	0/6/23/26	0/1/1/1
7	BMA	J	3	7	-	0/2/19/22	0/1/1/1
7	MAN	J	4	7	-	0/2/19/22	0/1/1/1
6	NAG	K	1	2,6	-	0/6/23/26	0/1/1/1
6	NAG	K	2	6	-	2/6/23/26	0/1/1/1

There are no bond length outliers.

All (2) bond angle outliers are listed below:

Mol	Chain	Res	Type	Atoms	Z	Observed(°)	Ideal(°)
7	J	3	BMA	C1-C2-C3	2.60	112.86	109.67
5	G	3	BMA	O5-C5-C6	2.40	110.96	107.20

There are no chirality outliers.

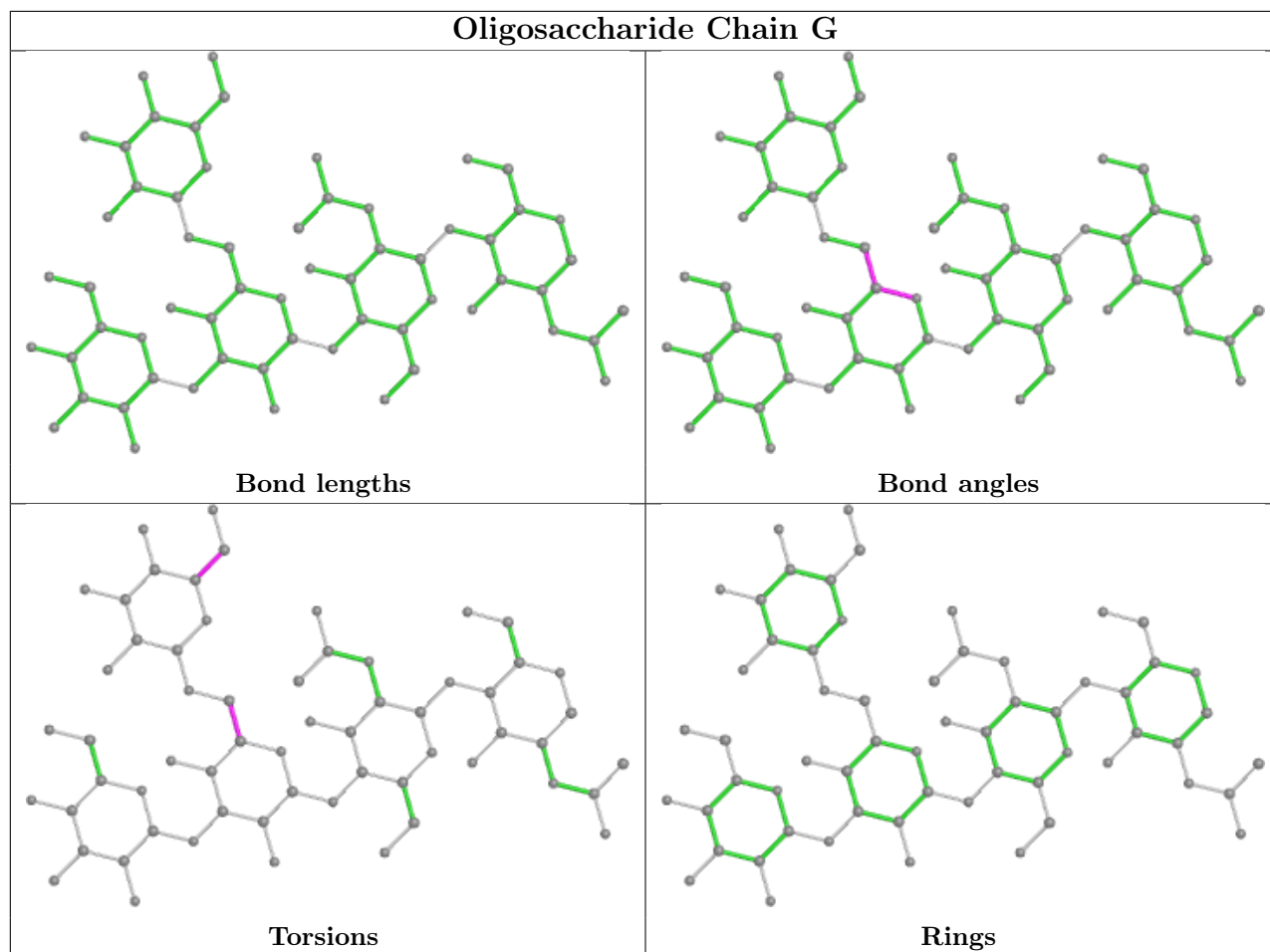
All (6) torsion outliers are listed below:

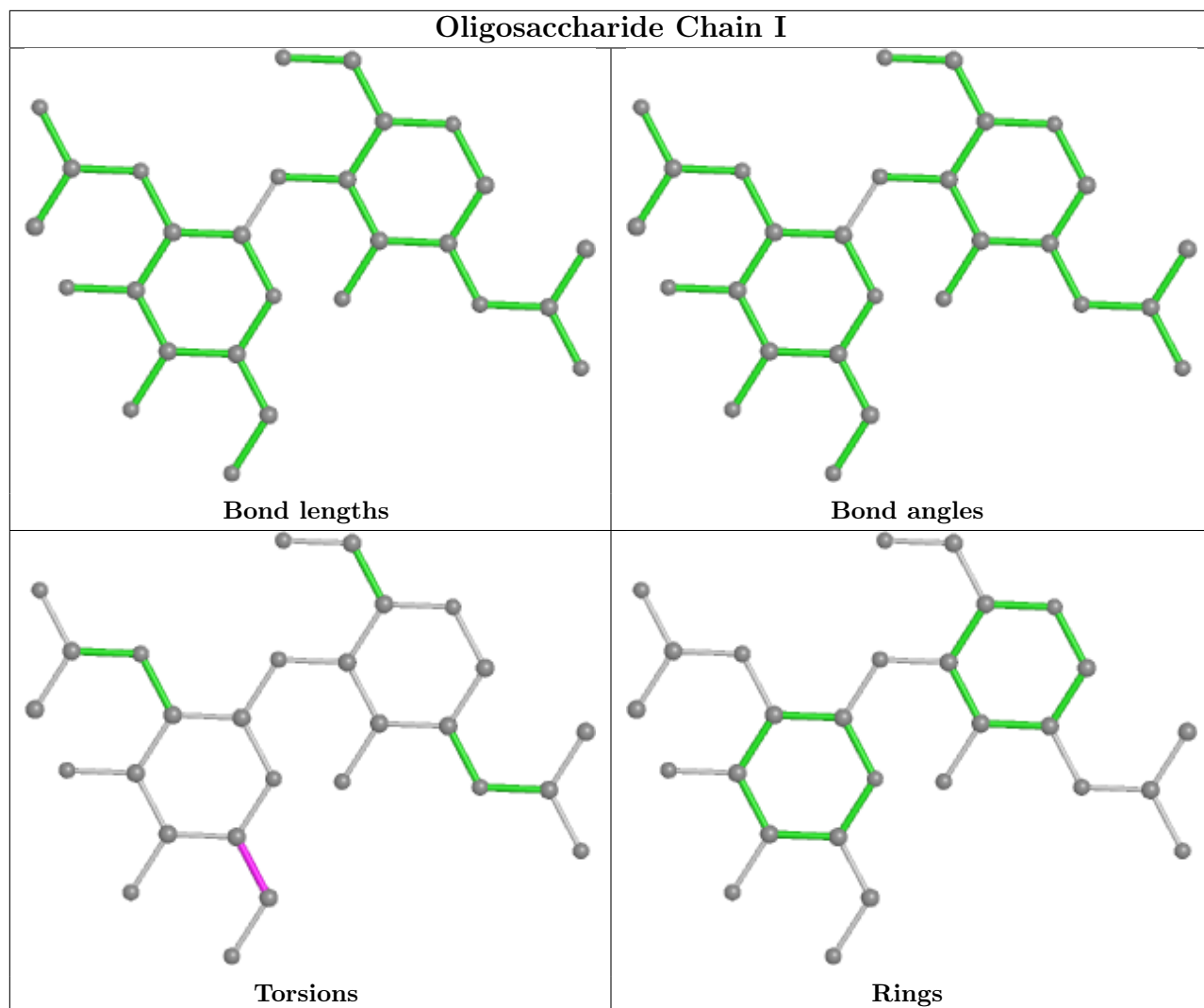
Mol	Chain	Res	Type	Atoms
5	G	3	BMA	O5-C5-C6-O6
6	K	2	NAG	C8-C7-N2-C2
5	G	5	MAN	O5-C5-C6-O6
6	I	2	NAG	O5-C5-C6-O6
6	K	2	NAG	O7-C7-N2-C2
5	G	3	BMA	C4-C5-C6-O6

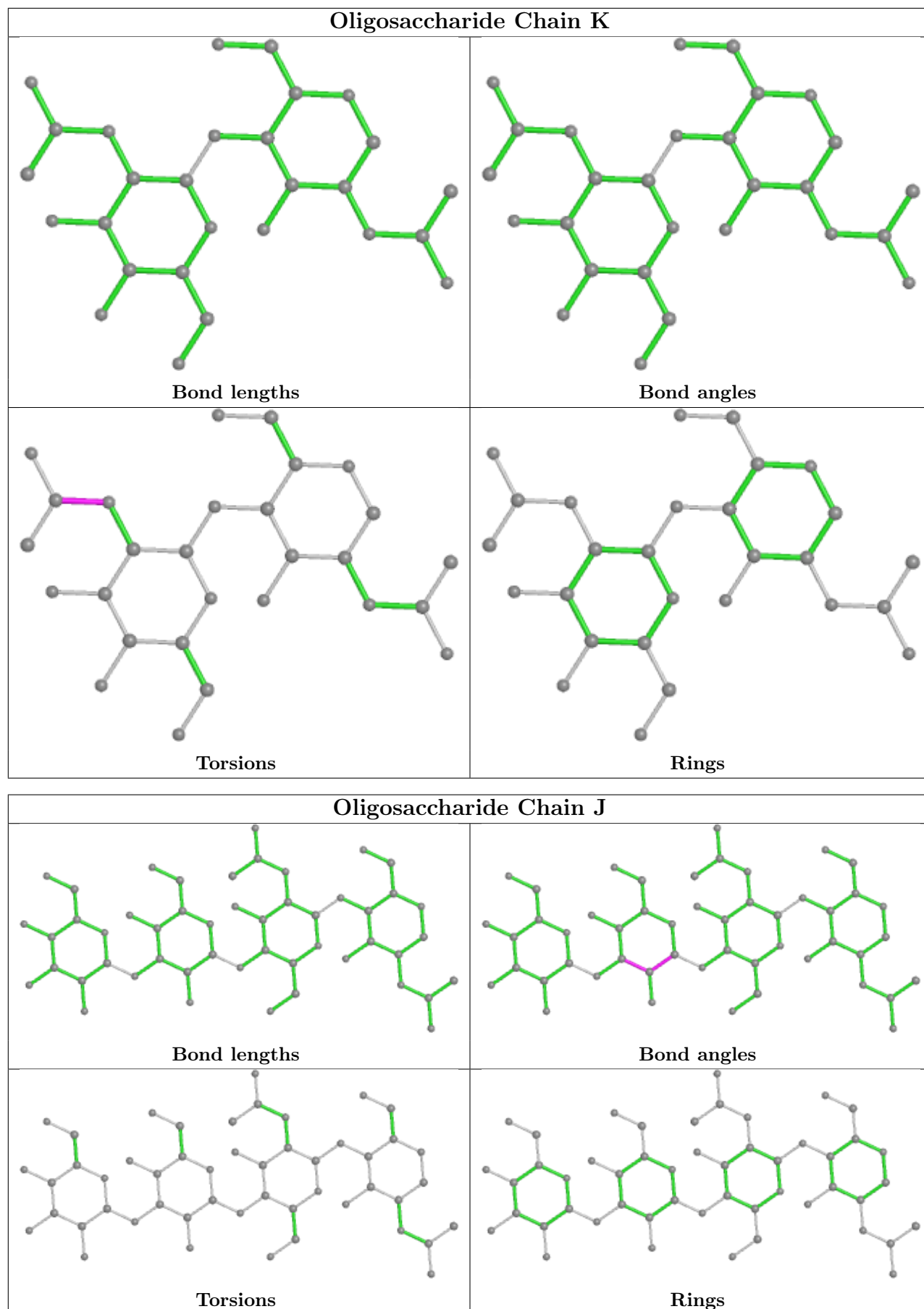
There are no ring outliers.

No monomer is involved in short contacts.

The following is a two-dimensional graphical depiction of Mogul quality analysis of bond lengths, bond angles, torsion angles, and ring geometry for oligosaccharide.









## 5.6 Ligand geometry

Of 33 ligands modelled in this entry, 15 are monoatomic - leaving 18 for Mogul analysis.

In the following table, the Counts columns list the number of bonds (or angles) for which Mogul statistics could be retrieved, the number of bonds (or angles) that are observed in the model and the number of bonds (or angles) that are defined in the Chemical Component Dictionary. The Link column lists molecule types, if any, to which the group is linked. The Z score for a bond length (or angle) is the number of standard deviations the observed value is removed from the expected value. A bond length (or angle) with  $|Z| > 2$  is considered an outlier worth inspection. RMSZ is the root-mean-square of all Z scores of the bond lengths (or angles).

Mol	Type	Chain	Res	Link	Bond lengths			Bond angles		
					Counts	RMSZ	# Z  > 2	Counts	RMSZ	# Z  > 2
9	SO4	A	1461	-	4,4,4	0.14	0	6,6,6	0.07	0
9	SO4	C	1456	-	4,4,4	0.15	0	6,6,6	0.05	0
8	GOL	A	1458	-	5,5,5	0.38	0	5,5,5	0.26	0
9	SO4	C	1459	-	4,4,4	0.14	0	6,6,6	0.04	0
9	SO4	C	1458	-	4,4,4	0.13	0	6,6,6	0.06	0
9	SO4	D	1473	12	4,4,4	0.14	0	6,6,6	0.07	0
9	SO4	L	1215	-	4,4,4	0.15	0	6,6,6	0.04	0
8	GOL	A	1459	-	5,5,5	0.37	0	5,5,5	0.23	0
13	NAG	B	3099	2	14,14,15	0.51	0	17,19,21	0.72	0
8	GOL	B	1467	-	5,5,5	0.37	0	5,5,5	0.23	0
9	SO4	D	1472	-	4,4,4	0.14	0	6,6,6	0.06	0
9	SO4	A	1462	-	4,4,4	0.13	0	6,6,6	0.05	0
13	NAG	D	3099	2	14,14,15	0.52	0	17,19,21	0.61	0
8	GOL	A	1460	-	5,5,5	0.37	0	5,5,5	0.16	0
8	GOL	C	1454	-	5,5,5	0.36	0	5,5,5	0.29	0
9	SO4	C	1460	-	4,4,4	0.14	0	6,6,6	0.04	0
8	GOL	C	1455	-	5,5,5	0.36	0	5,5,5	0.23	0
9	SO4	C	1457	-	4,4,4	0.14	0	6,6,6	0.05	0

In the following table, the Chirals column lists the number of chiral outliers, the number of chiral centers analysed, the number of these observed in the model and the number defined in the Chemical Component Dictionary. Similar counts are reported in the Torsion and Rings columns. '-' means no outliers of that kind were identified.

Mol	Type	Chain	Res	Link	Chirals	Torsions	Rings
8	GOL	A	1458	-	-	2/4/4/4	-
13	NAG	B	3099	2	-	0/6/23/26	0/1/1/1
8	GOL	A	1459	-	-	0/4/4/4	-
8	GOL	B	1467	-	-	2/4/4/4	-
13	NAG	D	3099	2	-	0/6/23/26	0/1/1/1
8	GOL	A	1460	-	-	2/4/4/4	-

*Continued on next page...*

*Continued from previous page...*

Mol	Type	Chain	Res	Link	Chirals	Torsions	Rings
8	GOL	C	1454	-	-	2/4/4/4	-
8	GOL	C	1455	-	-	2/4/4/4	-

There are no bond length outliers.

There are no bond angle outliers.

There are no chirality outliers.

All (10) torsion outliers are listed below:

Mol	Chain	Res	Type	Atoms
8	A	1458	GOL	O1-C1-C2-O2
8	A	1458	GOL	O1-C1-C2-C3
8	A	1460	GOL	O1-C1-C2-C3
8	B	1467	GOL	O1-C1-C2-C3
8	C	1454	GOL	O1-C1-C2-C3
8	A	1460	GOL	O1-C1-C2-O2
8	C	1454	GOL	O1-C1-C2-O2
8	C	1455	GOL	O1-C1-C2-C3
8	B	1467	GOL	O1-C1-C2-O2
8	C	1455	GOL	O1-C1-C2-O2

There are no ring outliers.

1 monomer is involved in 1 short contact:

Mol	Chain	Res	Type	Clashes	Symm-Clashes
8	C	1454	GOL	1	0

## 5.7 Other polymers [i](#)

There are no such residues in this entry.

## 5.8 Polymer linkage issues [i](#)

There are no chain breaks in this entry.

## 6 Fit of model and data

### 6.1 Protein, DNA and RNA chains

In the following table, the column labelled ‘#RSRZ > 2’ contains the number (and percentage) of RSRZ outliers, followed by percent RSRZ outliers for the chain as percentile scores relative to all X-ray entries and entries of similar resolution. The OWAB column contains the minimum, median, 95<sup>th</sup> percentile and maximum values of the occupancy-weighted average B-factor per residue. The column labelled ‘Q < 0.9’ lists the number of (and percentage) of residues with an average occupancy less than 0.9.

Mol	Chain	Analysed	<RSRZ>	#RSRZ>2	OWAB(Å <sup>2</sup> )	Q<0.9
1	A	457/457 (100%)	0.37	9 (1%) 65 62	9, 20, 53, 124	1 (0%)
1	C	453/457 (99%)	0.23	11 (2%) 59 54	16, 34, 68, 112	0
2	B	464/472 (98%)	0.97	78 (16%) 1 1	10, 46, 124, 181	2 (0%)
2	D	469/472 (99%)	0.50	49 (10%) 6 4	17, 45, 107, 163	2 (0%)
3	E	216/221 (97%)	2.14	84 (38%) 0 0	40, 103, 180, 201	0
3	H	216/221 (97%)	0.67	39 (18%) 1 0	24, 70, 124, 143	0
4	F	214/214 (100%)	2.20	96 (44%) 0 0	40, 92, 166, 237	0
4	L	214/214 (100%)	0.44	20 (9%) 8 5	28, 56, 89, 173	0
All	All	2703/2728 (99%)	0.79	386 (14%) 2 1	9, 46, 132, 237	5 (0%)

All (386) RSRZ outliers are listed below:

Mol	Chain	Res	Type	RSRZ
4	F	214	CYS	12.9
3	E	216	ILE	12.8
2	B	77	SER	11.9
3	E	199	ILE	11.6
2	D	469	SER	11.6
3	E	133	VAL	11.4
4	F	181	LEU	11.2
3	E	134	CYS	9.6
2	B	36	PRO	9.5
3	E	138	THR	9.2
4	F	125	LEU	8.9
3	E	194	TRP	8.8
3	E	201	CYS	8.7
3	E	144	LEU	8.7
4	F	126	THR	8.6
4	F	193	THR	8.3

*Continued on next page...*

*Continued from previous page...*

<b>Mol</b>	<b>Chain</b>	<b>Res</b>	<b>Type</b>	<b>RSRZ</b>
2	B	33	LEU	8.2
4	F	212	ASN	8.0
4	L	214	CYS	7.7
3	E	217	GLU	7.6
3	E	130	LEU	7.6
3	E	219	ARG	7.4
3	E	200	THR	7.3
4	F	150	ILE	6.9
3	E	131	ALA	6.9
3	E	212	VAL	6.9
2	B	44	LEU	6.9
4	F	182	THR	6.7
3	E	210	THR	6.7
2	B	4	ILE	6.7
3	E	195	PRO	6.7
3	E	128	TYR	6.6
4	F	158	GLY	6.5
3	E	132	PRO	6.5
3	E	142	VAL	6.5
4	F	130	ALA	6.4
4	F	122	SER	6.4
3	H	189	VAL	6.3
4	F	129	GLY	6.3
3	E	196	SER	6.3
4	F	192	TYR	6.2
2	B	8	ARG	6.2
2	B	10	VAL	6.2
4	F	120	PRO	6.2
3	E	160	TRP	6.2
4	F	194	CYS	6.2
4	F	213	GLU	6.1
2	B	32	PRO	6.1
4	F	209	PHE	6.1
4	F	210	ASN	6.0
4	F	180	THR	6.0
3	E	215	LYS	6.0
4	F	208	SER	5.9
4	F	186	TYR	5.7
1	A	337	PRO	5.7
2	B	375	LEU	5.7
2	B	34	GLY	5.7
2	D	51	PRO	5.7

*Continued on next page...*

*Continued from previous page...*

<b>Mol</b>	<b>Chain</b>	<b>Res</b>	<b>Type</b>	<b>RSRZ</b>
3	H	134	CYS	5.5
2	D	48	ASN	5.4
4	F	127	SER	5.4
4	F	132	VAL	5.4
2	D	4	ILE	5.4
2	B	5	CYS	5.4
2	B	39	ASP	5.4
2	D	471	CYS	5.3
3	E	187	VAL	5.3
2	D	33	LEU	5.2
2	B	51	PRO	5.2
4	F	179	LEU	5.1
2	B	67	ARG	5.1
2	D	9	GLY	5.1
4	F	119	PRO	5.1
4	F	131	SER	5.1
3	H	133	VAL	5.1
2	D	44	LEU	5.0
3	E	143	THR	4.9
2	B	28	ASP	4.9
4	F	115	VAL	4.9
3	E	165	LEU	4.9
4	F	206	VAL	4.8
2	B	35	SER	4.8
4	F	124	GLN	4.8
3	E	129	PRO	4.8
3	E	218	PRO	4.7
3	E	189	VAL	4.7
4	F	118	PHE	4.7
2	B	7	THR	4.7
2	B	446	HIS	4.7
4	F	205	ILE	4.7
2	B	46	LYS	4.7
2	B	45	LEU	4.6
1	A	339	ALA	4.6
3	E	147	LEU	4.6
4	F	117	ILE	4.6
4	F	148	TRP	4.6
3	E	203	VAL	4.6
4	L	212	ASN	4.5
2	D	35	SER	4.5
2	D	46	LYS	4.5

*Continued on next page...*

*Continued from previous page...*

<b>Mol</b>	<b>Chain</b>	<b>Res</b>	<b>Type</b>	<b>RSRZ</b>
4	F	128	GLY	4.4
2	B	450	ASN	4.4
4	F	191	SER	4.4
2	B	6	THR	4.3
3	E	16	ALA	4.3
4	F	133	VAL	4.3
2	B	30	ALA	4.3
4	F	184	ASP	4.3
3	E	193	THR	4.3
2	B	31	LEU	4.2
3	E	148	VAL	4.2
3	E	123	THR	4.2
3	H	138	THR	4.2
2	B	22	MET	4.2
2	D	375	LEU	4.2
4	F	190	ASN	4.1
2	B	3	ASN	4.1
3	E	176	LEU	4.0
3	E	167	SER	4.0
4	F	14	SER	4.0
4	F	156	GLN	4.0
2	D	54	ILE	4.0
4	F	154	GLU	4.0
3	E	214	LYS	4.0
2	B	38	CYS	4.0
2	D	22	MET	3.9
2	D	5	CYS	3.9
2	D	8	ARG	3.9
4	F	121	SER	3.9
4	F	106	ILE	3.9
3	E	156	VAL	3.9
4	F	151	ASP	3.8
1	A	338	HIS	3.8
3	E	208	SER	3.8
4	F	134	CYS	3.8
2	B	50	ALA	3.8
2	B	383	LEU	3.8
2	B	462	CYS	3.8
3	H	191	SER	3.7
1	C	337	PRO	3.7
4	F	107	LYS	3.7
4	F	189	HIS	3.7

*Continued on next page...*

*Continued from previous page...*

Mol	Chain	Res	Type	RSRZ
3	H	199	ILE	3.6
3	H	194	TRP	3.6
3	E	29	ILE	3.6
2	D	45	LEU	3.6
4	F	157	ASN	3.6
3	H	217	GLU	3.6
4	F	135	PHE	3.6
2	B	445	SER	3.5
3	E	126	SER	3.5
3	E	140	SER	3.5
4	F	169	LYS	3.5
3	E	191	SER	3.5
1	C	249	ASN	3.5
2	D	404	ARG	3.5
2	B	40	LEU	3.5
3	E	192	SER	3.4
3	H	215	LYS	3.4
3	H	203	VAL	3.4
1	C	339	ALA	3.4
2	D	30	ALA	3.4
3	E	65	GLN	3.4
2	D	40	LEU	3.4
3	E	85	SER	3.4
2	D	52	GLU	3.4
4	F	155	ARG	3.4
2	B	9	GLY	3.3
2	B	379	VAL	3.3
2	B	78	SER	3.3
3	H	211	LYS	3.3
4	F	197	THR	3.3
4	F	136	LEU	3.3
3	H	188	THR	3.3
3	E	139	GLY	3.3
4	F	147	LYS	3.3
4	F	183	LYS	3.3
2	B	404	ARG	3.3
3	E	145	GLY	3.3
2	D	470	GLN	3.3
4	L	125	LEU	3.3
4	F	196	ALA	3.3
3	E	84	SER	3.3
3	E	197	GLN	3.3

*Continued on next page...*

*Continued from previous page...*

<b>Mol</b>	<b>Chain</b>	<b>Res</b>	<b>Type</b>	<b>RSRZ</b>
2	B	460	CYS	3.2
4	F	153	SER	3.2
2	B	376	ASN	3.2
4	F	149	LYS	3.2
2	D	42	GLU	3.2
2	B	451	GLY	3.2
4	L	111	ALA	3.2
2	B	49	CYS	3.2
3	H	193	THR	3.2
3	E	166	SER	3.2
3	E	198	SER	3.2
4	F	103	LYS	3.2
2	B	48	ASN	3.2
4	F	173	TYR	3.2
3	H	216	ILE	3.1
2	B	448	CYS	3.1
4	F	185	GLU	3.1
2	B	66	ASP	3.1
3	E	190	THR	3.1
3	E	186	SER	3.1
4	F	116	SER	3.1
2	D	39	ASP	3.1
2	B	466	TRP	3.1
3	E	13	LYS	3.1
2	B	42	GLU	3.1
1	A	336	GLY	3.1
3	H	144	LEU	3.0
2	D	32	PRO	3.0
4	F	202	THR	3.0
4	F	207	LYS	3.0
2	B	11	SER	3.0
3	E	86	LEU	3.0
4	F	9	SER	3.0
4	L	105	GLU	3.0
2	D	36	PRO	3.0
4	F	170	ASP	3.0
3	H	192	SER	3.0
2	D	55	GLU	2.9
3	H	201	CYS	2.9
3	E	141	SER	2.9
3	H	210	THR	2.9
3	E	25	SER	2.9

*Continued on next page...*



*Continued from previous page...*

<b>Mol</b>	<b>Chain</b>	<b>Res</b>	<b>Type</b>	<b>RSRZ</b>
3	E	177	GLN	2.9
1	C	336	GLY	2.9
2	D	3	ASN	2.9
4	F	144	ILE	2.9
4	L	106	ILE	2.9
3	E	169	VAL	2.9
4	F	187	GLU	2.9
1	A	457	SER	2.9
3	H	207	ALA	2.9
1	C	130	CYS	2.9
3	E	209	SER	2.9
3	H	139	GLY	2.9
2	D	57	PRO	2.9
2	D	181	LYS	2.9
3	H	165	LEU	2.9
2	B	374	CYS	2.8
3	H	160	TRP	2.8
3	E	181	TYR	2.8
4	F	188	ARG	2.8
3	H	187	VAL	2.8
3	E	122	THR	2.8
4	L	169	LYS	2.8
3	E	83	LEU	2.8
3	H	169	VAL	2.8
4	F	13	VAL	2.8
4	F	83	PHE	2.8
3	E	117	VAL	2.8
3	E	182	THR	2.8
2	D	58	VAL	2.7
4	L	126	THR	2.7
2	B	17	LEU	2.7
3	E	180	LEU	2.7
2	B	382	GLY	2.7
4	F	174	SER	2.7
3	E	213	ASP	2.7
2	B	381	PRO	2.7
2	B	452	ASN	2.7
3	E	18	VAL	2.7
2	B	57	PRO	2.7
4	F	146	VAL	2.7
2	B	403	VAL	2.6
4	L	206	VAL	2.6

*Continued on next page...*

*Continued from previous page...*

Mol	Chain	Res	Type	RSRZ
2	B	98	LYS	2.6
3	E	149	LYS	2.6
3	H	209	SER	2.6
3	E	168	GLY	2.6
2	D	56	PHE	2.6
3	H	213	ASP	2.6
2	D	49	CYS	2.6
2	D	436	ALA	2.6
1	C	338	HIS	2.6
2	D	376	ASN	2.6
4	L	109	ALA	2.6
2	B	52	GLU	2.6
2	D	378	GLU	2.6
3	E	127	VAL	2.5
2	B	54	ILE	2.5
2	D	129[A]	TRP	2.5
1	A	47	GLN	2.5
2	B	26	CYS	2.5
2	D	28	ASP	2.5
4	F	201	SER	2.5
3	E	178	SER	2.5
4	L	12	SER	2.5
2	B	29	GLU	2.5
2	B	449	ASN	2.5
3	E	161	ASN	2.5
3	E	188	THR	2.5
2	D	53	SER	2.5
3	H	198	SER	2.5
1	A	185	ALA	2.5
2	D	377	ASN	2.5
3	H	158	LEU	2.4
4	F	140	TYR	2.4
4	F	167	ASP	2.4
2	D	26	CYS	2.4
3	H	142	VAL	2.4
4	L	171	SER	2.4
2	B	380	ILE	2.4
3	E	41	PRO	2.4
2	B	76	ASP	2.4
4	F	11	MET	2.4
4	F	15	LEU	2.4
4	F	171	SER	2.4

*Continued on next page...*

*Continued from previous page...*

<b>Mol</b>	<b>Chain</b>	<b>Res</b>	<b>Type</b>	<b>RSRZ</b>
2	D	7	THR	2.4
2	B	377	ASN	2.4
4	F	80	SER	2.4
2	D	468	GLY	2.4
3	H	140	SER	2.4
2	B	23	CYS	2.4
2	D	380	ILE	2.3
2	B	378	GLU	2.3
4	F	109	ALA	2.3
4	F	123	GLU	2.3
4	F	178	THR	2.3
2	D	27	SER	2.3
2	B	99	ASN	2.3
4	F	160	LEU	2.3
1	C	335	ARG	2.3
3	H	219	ARG	2.3
4	F	81	GLU	2.3
4	L	170	ASP	2.3
2	B	58	VAL	2.3
3	H	200	THR	2.3
4	F	177	SER	2.3
3	E	20	LEU	2.3
2	B	447	ARG	2.3
3	E	146	CYS	2.3
2	D	381	PRO	2.2
4	F	159	VAL	2.2
4	L	83	PHE	2.2
2	B	37	ARG	2.2
4	F	145	ASN	2.2
3	E	1	GLU	2.2
1	C	107	CYS	2.2
3	E	17	SER	2.2
4	L	127	SER	2.2
2	B	399	ILE	2.2
4	L	200	THR	2.2
4	F	195	GLU	2.2
3	E	62	PRO	2.2
3	E	179	ASP	2.2
4	F	16	GLY	2.2
3	H	190	THR	2.2
1	C	171	PHE	2.2
3	H	197	GLN	2.2

*Continued on next page...*

*Continued from previous page...*

Mol	Chain	Res	Type	RSRZ
2	D	50	ALA	2.1
2	B	364	GLU	2.1
4	F	113	PRO	2.1
3	H	214	LYS	2.1
2	D	77	SER	2.1
3	E	88	SER	2.1
3	H	162	SER	2.1
1	C	110	TRP	2.1
2	B	372	ALA	2.1
3	H	168	GLY	2.1
4	L	128	GLY	2.1
4	F	102	THR	2.1
4	L	14	SER	2.1
2	B	456	GLU	2.1
1	A	130	CYS	2.1
3	H	122	THR	2.1
4	L	108	ARG	2.1
4	F	204	PRO	2.1
2	B	19	VAL	2.1
4	F	19	VAL	2.1
2	D	95	ASP	2.1
4	L	80	SER	2.1
2	B	43	ASN	2.1
1	A	167	CYS	2.1
4	F	79	ASP	2.0
1	C	237	TYR	2.0
2	B	18	ALA	2.0
2	B	459	VAL	2.0
3	E	175	VAL	2.0
2	D	41	LYS	2.0
2	B	164	TYR	2.0
2	B	401	ALA	2.0
3	H	208	SER	2.0
4	F	152	GLY	2.0

## 6.2 Non-standard residues in protein, DNA, RNA chains [i](#)

There are no non-standard protein/DNA/RNA residues in this entry.

### 6.3 Carbohydrates

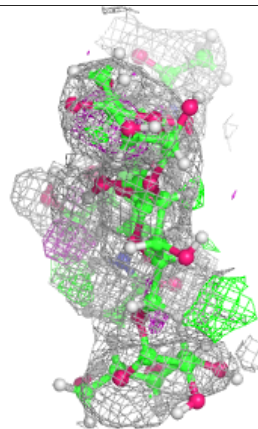
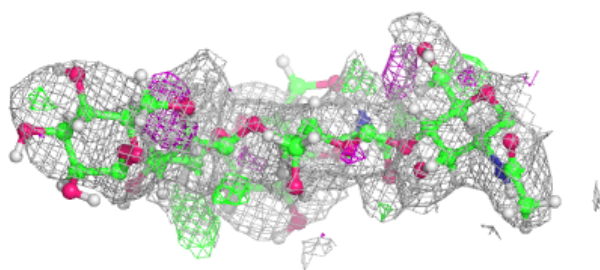
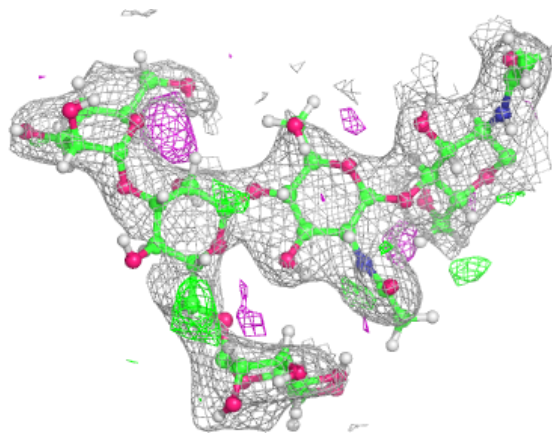
In the following table, the Atoms column lists the number of modelled atoms in the group and the number defined in the chemical component dictionary. The B-factors column lists the minimum, median, 95<sup>th</sup> percentile and maximum values of B factors of atoms in the group. The column labelled 'Q< 0.9' lists the number of atoms with occupancy less than 0.9.

Mol	Type	Chain	Res	Atoms	RSCC	RSR	B-factors(Å <sup>2</sup> )	Q<0.9
7	BMA	J	3	11/12	0.69	0.34	93,132,158,161	0
5	BMA	G	3	11/12	0.75	0.24	81,124,152,153	0
7	MAN	J	4	11/12	0.75	0.22	104,129,153,155	0
5	MAN	G	4	11/12	0.76	0.28	54,111,133,145	0
5	MAN	G	5	11/12	0.80	0.27	108,127,148,152	0
6	NAG	K	2	14/15	0.82	0.50	116,148,185,192	0
6	NAG	I	1	14/15	0.83	0.34	66,98,121,123	0
6	NAG	K	1	14/15	0.84	0.30	55,95,127,136	0
6	NAG	I	2	14/15	0.86	0.39	93,126,151,153	0
7	NAG	J	2	14/15	0.87	0.26	48,77,102,108	0
5	NAG	G	2	14/15	0.92	0.16	47,65,96,99	0
7	NAG	J	1	14/15	0.94	0.14	21,44,61,70	0
5	NAG	G	1	14/15	0.96	0.12	13,28,46,53	0

The following is a graphical depiction of the model fit to experimental electron density for oligosaccharide. Each fit is shown from different orientation to approximate a three-dimensional view.

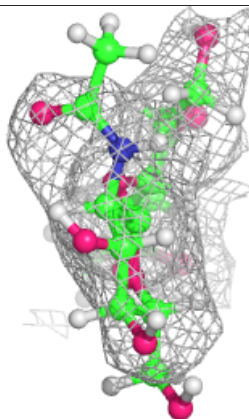
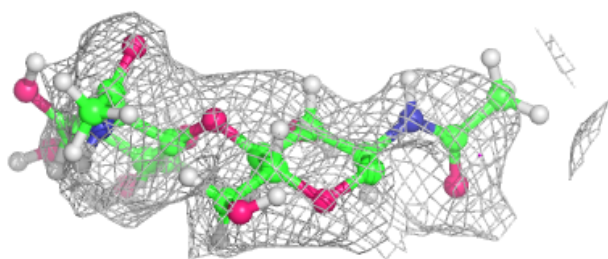
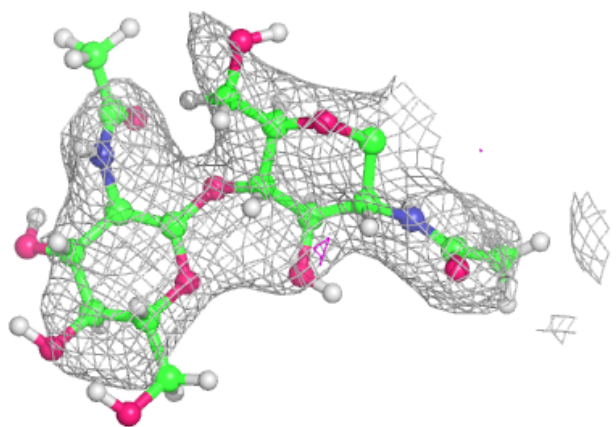
**Electron density around Chain G:**

$2mF_o-DF_c$  (at 0.7 rmsd) in gray  
 $mF_o-DF_c$  (at 3 rmsd) in purple (negative)  
and green (positive)

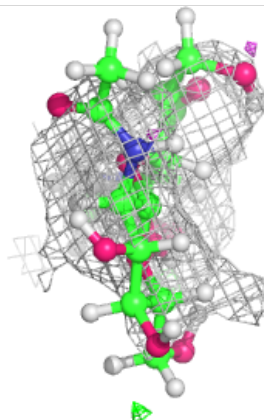
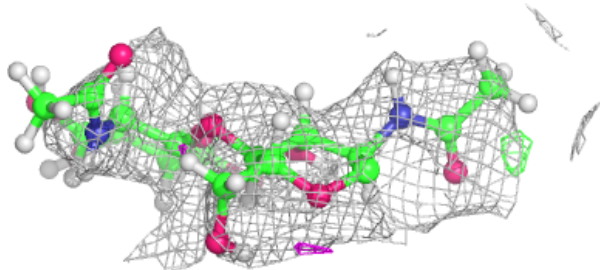
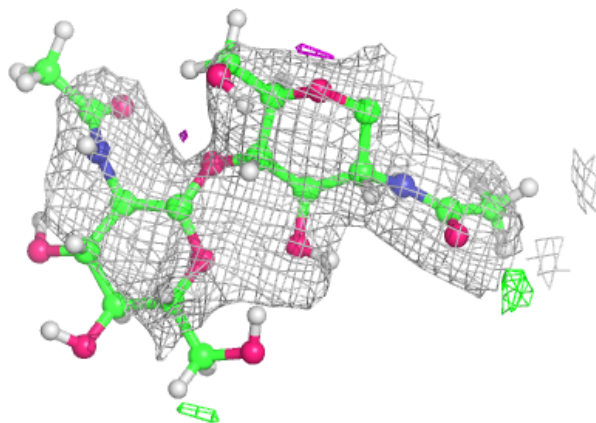


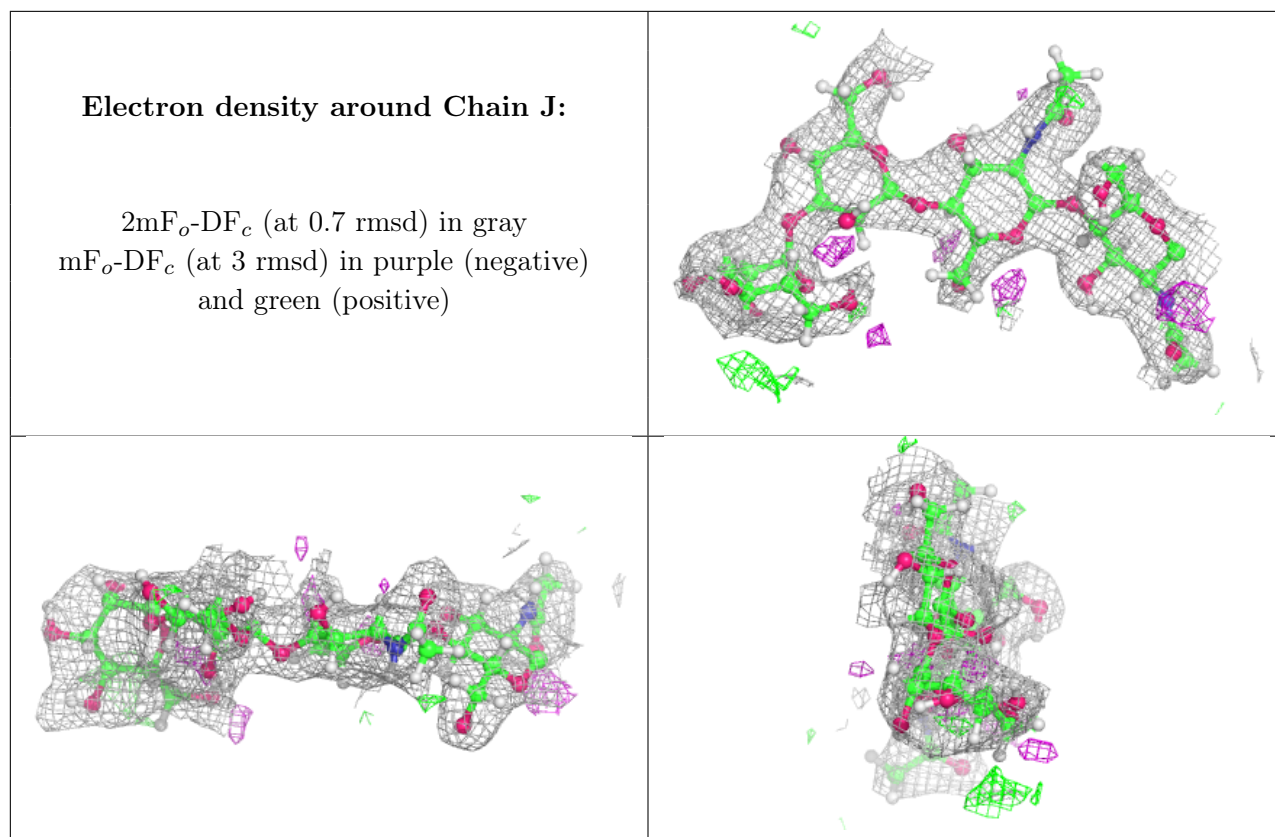
**Electron density around Chain I:**

$2mF_o-DF_c$  (at 0.7 rmsd) in gray  
 $mF_o-DF_c$  (at 3 rmsd) in purple (negative)  
and green (positive)

**Electron density around Chain K:**

$2mF_o-DF_c$  (at 0.7 rmsd) in gray  
 $mF_o-DF_c$  (at 3 rmsd) in purple (negative)  
and green (positive)





## 6.4 Ligands [i](#)

In the following table, the Atoms column lists the number of modelled atoms in the group and the number defined in the chemical component dictionary. The B-factors column lists the minimum, median, 95<sup>th</sup> percentile and maximum values of B factors of atoms in the group. The column labelled 'Q< 0.9' lists the number of atoms with occupancy less than 0.9.

Mol	Type	Chain	Res	Atoms	RSCC	RSR	B-factors(Å <sup>2</sup> )	Q<0.9
9	SO4	C	1460	5/5	0.82	0.25	105,113,126,134	0
13	NAG	B	3099	14/15	0.85	0.37	95,127,149,154	0
9	SO4	D	1472	5/5	0.86	0.28	62,114,118,118	0
8	GOL	A	1460	6/6	0.86	0.19	50,67,81,89	0
8	GOL	C	1455	6/6	0.87	0.26	55,86,104,124	0
13	NAG	D	3099	14/15	0.87	0.30	78,100,120,127	0
9	SO4	C	1457	5/5	0.88	0.19	88,112,116,117	0
9	SO4	L	1215	5/5	0.88	0.24	100,105,109,119	0
9	SO4	C	1459	5/5	0.90	0.23	132,135,136,141	0
8	GOL	A	1459	6/6	0.90	0.28	47,71,81,86	0
8	GOL	C	1454	6/6	0.90	0.19	46,71,85,85	0
9	SO4	A	1462	5/5	0.92	0.19	94,110,116,116	0
8	GOL	B	1467	6/6	0.92	0.20	62,87,101,104	0
9	SO4	C	1458	5/5	0.93	0.24	59,107,112,117	0

*Continued on next page...*



*Continued from previous page...*

Mol	Type	Chain	Res	Atoms	RSCC	RSR	B-factors( $\text{\AA}^2$ )	Q<0.9
9	SO4	C	1456	5/5	0.94	0.20	56,99,110,117	0
10	CA	C	2004	1/1	0.95	0.06	47,47,47,47	0
8	GOL	A	1458	6/6	0.95	0.20	42,62,82,82	0
9	SO4	A	1461	5/5	0.95	0.19	48,71,91,109	0
10	CA	A	2004	1/1	0.97	0.05	28,28,28,28	0
12	MN	B	2002	1/1	0.97	0.07	41,41,41,41	0
12	MN	D	2002	1/1	0.98	0.07	43,43,43,43	0
10	CA	C	2007	1/1	0.98	0.12	38,38,38,38	0
9	SO4	D	1473	5/5	0.98	0.17	19,55,61,81	0
10	CA	A	2006	1/1	0.99	0.20	14,14,14,14	0
11	CL	B	1468	1/1	0.99	0.21	26,26,26,26	0
10	CA	A	2007	1/1	0.99	0.15	14,14,14,14	0
12	MN	B	2003	1/1	0.99	0.16	25,25,25,25	0
12	MN	D	2001	1/1	0.99	0.14	31,31,31,31	0
10	CA	A	2005	1/1	0.99	0.12	15,15,15,15	0
12	MN	D	2003	1/1	0.99	0.13	34,34,34,34	0
10	CA	C	2005	1/1	0.99	0.06	38,38,38,38	0
10	CA	C	2006	1/1	0.99	0.14	33,33,33,33	0
12	MN	B	2001	1/1	1.00	0.20	23,23,23,23	0

## 6.5 Other polymers [\(i\)](#)

There are no such residues in this entry.