



Full wwPDB X-ray Structure Validation Report ⓘ

Jun 12, 2024 – 08:00 PM EDT

PDB ID : 3VQ7
Title : HIV-1 IN core domain in complex with 4-(1H-pyrrol-1-yl)aniline
Authors : Wielens, J.; Chalmers, D.K.; Parker, M.W.; Scanlon, M.J.
Deposited on : 2012-03-20
Resolution : 1.63 Å(reported)

This is a Full wwPDB X-ray Structure Validation Report for a publicly released PDB entry.

We welcome your comments at validation@mail.wwpdb.org

A user guide is available at

<https://www.wwpdb.org/validation/2017/XrayValidationReportHelp>

with specific help available everywhere you see the ⓘ symbol.

The types of validation reports are described at

<http://www.wwpdb.org/validation/2017/FAQs#types>.

The following versions of software and data (see [references ⓘ](#)) were used in the production of this report:

MolProbity : 4.02b-467
Mogul : 2022.3.0, CSD as543be (2022)
Xtrriage (Phenix) : 1.20.1
EDS : 2.36.2
Percentile statistics : 20191225.v01 (using entries in the PDB archive December 25th 2019)
Refmac : 5.8.0158
CCP4 : 7.0.044 (Gargrove)
Ideal geometry (proteins) : Engh & Huber (2001)
Ideal geometry (DNA, RNA) : Parkinson et al. (1996)
Validation Pipeline (wwPDB-VP) : 2.36.2

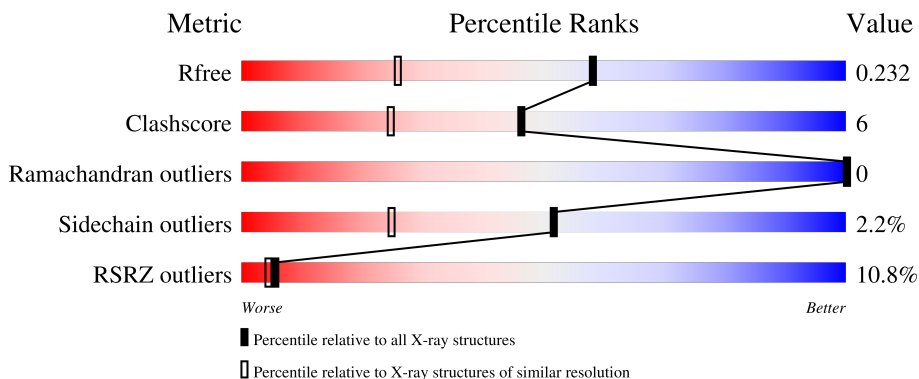
1 Overall quality at a glance

The following experimental techniques were used to determine the structure:

X-RAY DIFFRACTION

The reported resolution of this entry is 1.63 Å.

Percentile scores (ranging between 0-100) for global validation metrics of the entry are shown in the following graphic. The table shows the number of entries on which the scores are based.



Metric	Whole archive (#Entries)	Similar resolution (#Entries, resolution range(Å))
R_{free}	130704	3122 (1.66-1.62)
Clashscore	141614	3268 (1.66-1.62)
Ramachandran outliers	138981	3215 (1.66-1.62)
Sidechain outliers	138945	3215 (1.66-1.62)
RSRZ outliers	127900	3079 (1.66-1.62)

The table below summarises the geometric issues observed across the polymeric chains and their fit to the electron density. The red, orange, yellow and green segments of the lower bar indicate the fraction of residues that contain outliers for ≥ 3 , 2, 1 and 0 types of geometric quality criteria respectively. A grey segment represents the fraction of residues that are not modelled. The numeric value for each fraction is indicated below the corresponding segment, with a dot representing fractions $\leq 5\%$. The upper red bar (where present) indicates the fraction of residues that have poor fit to the electron density. The numeric value is given above the bar.

Mol	Chain	Length	Quality of chain
1	A	158	 9% 83% 8% 8%
1	B	158	 11% 78% 11% 11%
2	C	2	 100%

2 Entry composition i

There are 6 unique types of molecules in this entry. The entry contains 2369 atoms, of which 0 are hydrogens and 0 are deuteriums.

In the tables below, the ZeroOcc column contains the number of atoms modelled with zero occupancy, the AltConf column contains the number of residues with at least one atom in alternate conformation and the Trace column contains the number of residues modelled with at most 2 atoms.

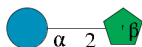
- Molecule 1 is a protein called POL polyprotein.

Mol	Chain	Residues	Atoms					ZeroOcc	AltConf	Trace
			Total	C	N	O	S			
1	A	145	1109	704	192	209	4	0	0	0
1	B	141	1081	683	190	204	4	0	0	0

There are 8 discrepancies between the modelled and reference sequences:

Chain	Residue	Modelled	Actual	Comment	Reference
A	56	SER	CYS	engineered mutation	UNP Q72498
A	131	ASP	TRP	engineered mutation	UNP Q72498
A	139	ASP	PHE	engineered mutation	UNP Q72498
A	185	HIS	PHE	engineered mutation	UNP Q72498
B	56	SER	CYS	engineered mutation	UNP Q72498
B	131	ASP	TRP	engineered mutation	UNP Q72498
B	139	ASP	PHE	engineered mutation	UNP Q72498
B	185	HIS	PHE	engineered mutation	UNP Q72498

- Molecule 2 is an oligosaccharide called beta-D-fructofuranose-(2-1)-alpha-D-glucopyranose.



Mol	Chain	Residues	Atoms			ZeroOcc	AltConf	Trace
			Total	C	O			
2	C	2	23	12	11	0	0	0

- Molecule 3 is CADMIUM ION (three-letter code: CD) (formula: Cd).

Mol	Chain	Residues	Atoms		ZeroOcc	AltConf
3	A	2	Total	Cd	0	0
			2	2		

Continued on next page...

Continued from previous page...

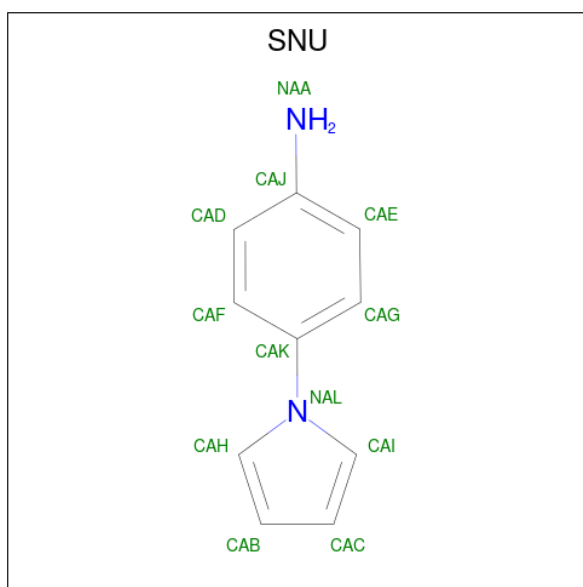
Mol	Chain	Residues	Atoms		ZeroOcc	AltConf
3	B	2	Total	Cd	0	0
			2	2		

- Molecule 4 is SULFATE ION (three-letter code: SO4) (formula: O₄S).



Mol	Chain	Residues	Atoms			ZeroOcc	AltConf
4	A	1	Total	O	S	0	0
			5	4	1		
4	B	1	Total	O	S	0	0
			5	4	1		

- Molecule 5 is 4-(1H-pyrrol-1-yl)aniline (three-letter code: SNU) (formula: C₁₀H₁₀N₂).



Mol	Chain	Residues	Atoms		ZeroOcc	AltConf
5	A	1	Total	C N	0	0
			12	10 2		
5	B	1	Total	C N	0	0
			12	10 2		

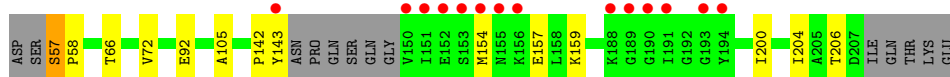
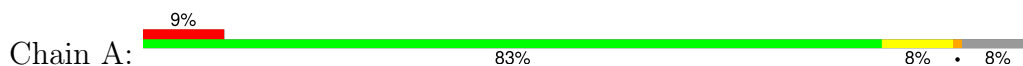
- Molecule 6 is water.

Mol	Chain	Residues	Atoms		ZeroOcc	AltConf
6	A	59	Total	O	0	0
			59	59		
6	B	59	Total	O	0	0
			59	59		

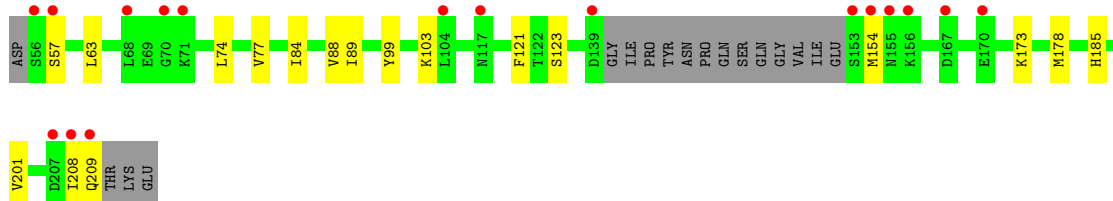
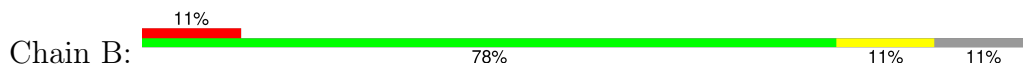
3 Residue-property plots [i](#)

These plots are drawn for all protein, RNA, DNA and oligosaccharide chains in the entry. The first graphic for a chain summarises the proportions of the various outlier classes displayed in the second graphic. The second graphic shows the sequence view annotated by issues in geometry and electron density. Residues are color-coded according to the number of geometric quality criteria for which they contain at least one outlier: green = 0, yellow = 1, orange = 2 and red = 3 or more. A red dot above a residue indicates a poor fit to the electron density ($RSRZ > 2$). Stretches of 2 or more consecutive residues without any outlier are shown as a green connector. Residues present in the sample, but not in the model, are shown in grey.

- Molecule 1: POL polyprotein



- Molecule 1: POL polyprotein



- Molecule 2: beta-D-fructofuranose-(2-1)-alpha-D-glucopyranose



4 Data and refinement statistics

Property	Value	Source
Space group	P 21 21 21	Depositor
Cell constants a, b, c, α , β , γ	60.28Å 61.66Å 82.02Å 90.00° 90.00° 90.00°	Depositor
Resolution (Å)	34.15 – 1.63 34.15 – 1.63	Depositor EDS
% Data completeness (in resolution range)	99.5 (34.15-1.63) 99.6 (34.15-1.63)	Depositor EDS
R_{merge}	0.08	Depositor
R_{sym}	0.09	Depositor
$\langle I/\sigma(I) \rangle$ ¹	1.23 (at 1.63Å)	Xtrriage
Refinement program	REFMAC 5.2.0019	Depositor
R, R_{free}	0.199 , 0.227 0.206 , 0.232	Depositor DCC
R_{free} test set	1924 reflections (5.01%)	wwPDB-VP
Wilson B-factor (Å ²)	21.6	Xtrriage
Anisotropy	0.060	Xtrriage
Bulk solvent k_{sol} (e/Å ³), B_{sol} (Å ²)	0.38 , 47.9	EDS
L-test for twinning ²	$\langle L \rangle = 0.48$, $\langle L^2 \rangle = 0.31$	Xtrriage
Estimated twinning fraction	0.021 for k,h,-l	Xtrriage
F_o, F_c correlation	0.95	EDS
Total number of atoms	2369	wwPDB-VP
Average B, all atoms (Å ²)	25.0	wwPDB-VP

Xtrriage's analysis on translational NCS is as follows: *The largest off-origin peak in the Patterson function is 7.33% of the height of the origin peak. No significant pseudotranslation is detected.*

¹Intensities estimated from amplitudes.

²Theoretical values of $\langle |L| \rangle$, $\langle L^2 \rangle$ for acentric reflections are 0.5, 0.333 respectively for untwinned datasets, and 0.375, 0.2 for perfectly twinned datasets.

5 Model quality [i](#)

5.1 Standard geometry [i](#)

Bond lengths and bond angles in the following residue types are not validated in this section: SNU, CD, SO4, GLC, FRU

The Z score for a bond length (or angle) is the number of standard deviations the observed value is removed from the expected value. A bond length (or angle) with $|Z| > 5$ is considered an outlier worth inspection. RMSZ is the root-mean-square of all Z scores of the bond lengths (or angles).

Mol	Chain	Bond lengths		Bond angles	
		RMSZ	# Z >5	RMSZ	# Z >5
1	A	0.68	0/1130	0.69	0/1531
1	B	0.73	0/1100	0.70	0/1487
All	All	0.70	0/2230	0.70	0/3018

Chiral center outliers are detected by calculating the chiral volume of a chiral center and verifying if the center is modelled as a planar moiety or with the opposite hand. A planarity outlier is detected by checking planarity of atoms in a peptide group, atoms in a mainchain group or atoms of a sidechain that are expected to be planar.

Mol	Chain	#Chirality outliers	#Planarity outliers
1	A	0	1

There are no bond length outliers.

There are no bond angle outliers.

There are no chirality outliers.

All (1) planarity outliers are listed below:

Mol	Chain	Res	Type	Group
1	A	142	PRO	Peptide

5.2 Too-close contacts [i](#)

In the following table, the Non-H and H(model) columns list the number of non-hydrogen atoms and hydrogen atoms in the chain respectively. The H(added) column lists the number of hydrogen atoms added and optimized by MolProbity. The Clashes column lists the number of clashes within the asymmetric unit, whereas Symm-Clashes lists symmetry-related clashes.

Mol	Chain	Non-H	H(model)	H(added)	Clashes	Symm-Clashes
1	A	1109	0	1103	9	0
1	B	1081	0	1082	15	0
2	C	23	0	21	7	0
3	A	2	0	0	0	0
3	B	2	0	0	0	0
4	A	5	0	0	1	0
4	B	5	0	0	0	0
5	A	12	0	10	3	0
5	B	12	0	10	1	0
6	A	59	0	0	2	0
6	B	59	0	0	3	0
All	All	2369	0	2226	28	0

The all-atom clashscore is defined as the number of clashes found per 1000 atoms (including hydrogen atoms). The all-atom clashscore for this structure is 6.

All (28) close contacts within the same asymmetric unit are listed below, sorted by their clash magnitude.

Atom-1	Atom-2	Interatomic distance (Å)	Clash overlap (Å)
5:A:1004:SNU:HAH	6:B:423:HOH:O	1.43	1.14
4:A:1003:SO4:O4	6:A:1158:HOH:O	1.75	1.04
1:A:66:THR:HG23	1:A:159:LYS:HE2	1.66	0.78
5:A:1004:SNU:HAD	1:B:201:VAL:HG21	1.65	0.76
1:A:206:THR:OG1	6:A:1159:HOH:O	1.98	0.76
1:A:200:ILE:HG12	1:A:204:ILE:HD12	1.74	0.69
1:A:57:SER:N	1:A:58:PRO:HD2	2.17	0.58
1:B:173:LYS:NZ	2:C:1:GLC:H62	2.19	0.57
1:A:72:VAL:HG11	1:A:92:GLU:HG3	1.88	0.56
1:B:63:LEU:HD23	1:B:121:PHE:CE1	2.41	0.56
1:A:66:THR:CG2	1:A:159:LYS:HE2	2.35	0.55
6:B:437:HOH:O	2:C:2:FRU:H61	2.06	0.54
1:B:208:ILE:O	1:B:209:GLN:HB2	2.09	0.53
1:B:103:LYS:HZ3	2:C:2:FRU:C1	2.23	0.52
1:B:88:VAL:HG21	1:B:173:LYS:HA	1.92	0.52
1:B:99:TYR:CE2	1:B:103:LYS:HD2	2.45	0.51
1:B:63:LEU:HD23	1:B:121:PHE:HE1	1.77	0.50
1:B:103:LYS:NZ	2:C:2:FRU:H12	2.27	0.50
1:B:103:LYS:NZ	2:C:2:FRU:C1	2.75	0.49
1:B:77:VAL:HG22	1:B:84:ILE:HG12	1.94	0.48
1:B:74:LEU:HD13	1:B:89:ILE:HD11	1.98	0.45
1:B:178:MET:HE2	5:B:304:SNU:CAI	2.47	0.44
5:A:1004:SNU:HAG	6:B:423:HOH:O	2.18	0.43

Continued on next page...

Continued from previous page...

Atom-1	Atom-2	Interatomic distance (Å)	Clash overlap (Å)
1:A:200:ILE:CG1	1:A:204:ILE:HD12	2.48	0.42
1:A:105:ALA:O	1:B:185:HIS:HE1	2.02	0.42
1:A:154:MET:HA	1:A:157:GLU:HB2	2.01	0.41
1:B:173:LYS:HZ3	2:C:1:GLC:H62	1.84	0.41
2:C:1:GLC:C2	2:C:2:FRU:O5	2.68	0.40

There are no symmetry-related clashes.

5.3 Torsion angles [i](#)

5.3.1 Protein backbone [i](#)

In the following table, the Percentiles column shows the percent Ramachandran outliers of the chain as a percentile score with respect to all X-ray entries followed by that with respect to entries of similar resolution.

The Analysed column shows the number of residues for which the backbone conformation was analysed, and the total number of residues.

Mol	Chain	Analysed	Favoured	Allowed	Outliers	Percentiles	
1	A	141/158 (89%)	140 (99%)	1 (1%)	0	100	100
1	B	137/158 (87%)	136 (99%)	1 (1%)	0	100	100
All	All	278/316 (88%)	276 (99%)	2 (1%)	0	100	100

There are no Ramachandran outliers to report.

5.3.2 Protein sidechains [i](#)

In the following table, the Percentiles column shows the percent sidechain outliers of the chain as a percentile score with respect to all X-ray entries followed by that with respect to entries of similar resolution.

The Analysed column shows the number of residues for which the sidechain conformation was analysed, and the total number of residues.

Mol	Chain	Analysed	Rotameric	Outliers	Percentiles	
1	A	116/129 (90%)	114 (98%)	2 (2%)	60	36
1	B	114/129 (88%)	111 (97%)	3 (3%)	46	19
All	All	230/258 (89%)	225 (98%)	5 (2%)	52	25

All (5) residues with a non-rotameric sidechain are listed below:

Mol	Chain	Res	Type
1	A	57	SER
1	A	143	TYR
1	B	57	SER
1	B	123	SER
1	B	154	MET

Sometimes sidechains can be flipped to improve hydrogen bonding and reduce clashes. All (1) such sidechains are listed below:

Mol	Chain	Res	Type
1	B	164	GLN

5.3.3 RNA [i](#)

There are no RNA molecules in this entry.

5.4 Non-standard residues in protein, DNA, RNA chains [i](#)

There are no non-standard protein/DNA/RNA residues in this entry.

5.5 Carbohydrates [i](#)

2 monosaccharides are modelled in this entry.

In the following table, the Counts columns list the number of bonds (or angles) for which Mogul statistics could be retrieved, the number of bonds (or angles) that are observed in the model and the number of bonds (or angles) that are defined in the Chemical Component Dictionary. The Link column lists molecule types, if any, to which the group is linked. The Z score for a bond length (or angle) is the number of standard deviations the observed value is removed from the expected value. A bond length (or angle) with $|Z| > 2$ is considered an outlier worth inspection. RMSZ is the root-mean-square of all Z scores of the bond lengths (or angles).

Mol	Type	Chain	Res	Link	Bond lengths			Bond angles		
					Counts	RMSZ	$\# Z > 2$	Counts	RMSZ	$\# Z > 2$
2	GLC	C	1	2	11,11,12	0.99	0	15,15,17	2.45	4 (26%)
2	FRU	C	2	2	11,12,12	0.69	0	10,18,18	1.18	1 (10%)

In the following table, the Chirals column lists the number of chiral outliers, the number of chiral centers analysed, the number of these observed in the model and the number defined in the Chemical Component Dictionary. Similar counts are reported in the Torsion and Rings columns.

'-' means no outliers of that kind were identified.

Mol	Type	Chain	Res	Link	Chirals	Torsions	Rings
2	GLC	C	1	2	-	0/2/19/22	0/1/1/1
2	FRU	C	2	2	-	3/5/24/24	0/1/1/1

There are no bond length outliers.

All (5) bond angle outliers are listed below:

Mol	Chain	Res	Type	Atoms	Z	Observed(°)	Ideal(°)
2	C	1	GLC	O5-C1-C2	-7.50	92.91	110.79
2	C	1	GLC	C1-O5-C5	-3.66	107.28	112.19
2	C	1	GLC	C1-C2-C3	-2.67	105.76	109.64
2	C	2	FRU	O2-C2-O5	-2.23	105.05	109.33
2	C	1	GLC	O5-C5-C4	-2.02	105.92	110.83

There are no chirality outliers.

All (3) torsion outliers are listed below:

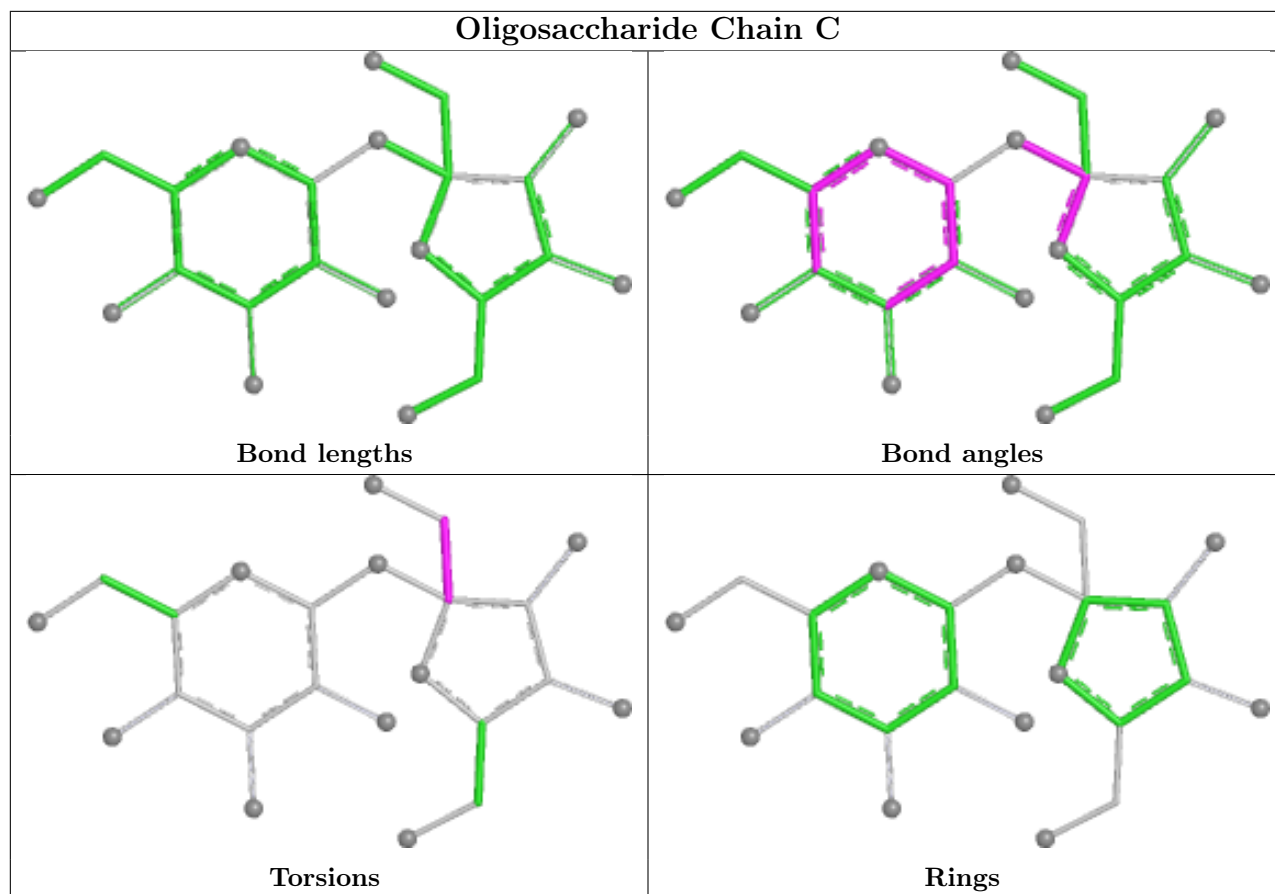
Mol	Chain	Res	Type	Atoms
2	C	2	FRU	O1-C1-C2-C3
2	C	2	FRU	O1-C1-C2-O2
2	C	2	FRU	O1-C1-C2-O5

There are no ring outliers.

2 monomers are involved in 7 short contacts:

Mol	Chain	Res	Type	Clashes	Symm-Clashes
2	C	1	GLC	3	0
2	C	2	FRU	5	0

The following is a two-dimensional graphical depiction of Mogul quality analysis of bond lengths, bond angles, torsion angles, and ring geometry for oligosaccharide.



5.6 Ligand geometry [i](#)

Of 8 ligands modelled in this entry, 4 are monoatomic - leaving 4 for Mogul analysis.

In the following table, the Counts columns list the number of bonds (or angles) for which Mogul statistics could be retrieved, the number of bonds (or angles) that are observed in the model and the number of bonds (or angles) that are defined in the Chemical Component Dictionary. The Link column lists molecule types, if any, to which the group is linked. The Z score for a bond length (or angle) is the number of standard deviations the observed value is removed from the expected value. A bond length (or angle) with $|Z| > 2$ is considered an outlier worth inspection. RMSZ is the root-mean-square of all Z scores of the bond lengths (or angles).

Mol	Type	Chain	Res	Link	Bond lengths			Bond angles		
					Counts	RMSZ	$\# Z > 2$	Counts	RMSZ	$\# Z > 2$
5	SNU	B	304	-	13,13,13	2.10	3 (23%)	16,17,17	2.12	5 (31%)
5	SNU	A	1004	-	13,13,13	2.40	3 (23%)	16,17,17	2.24	5 (31%)
4	SO4	B	303	-	4,4,4	0.25	0	6,6,6	0.23	0
4	SO4	A	1003	-	4,4,4	0.35	0	6,6,6	0.23	0

In the following table, the Chirals column lists the number of chiral outliers, the number of chiral centers analysed, the number of these observed in the model and the number defined in the

Chemical Component Dictionary. Similar counts are reported in the Torsion and Rings columns. '-' means no outliers of that kind were identified.

Mol	Type	Chain	Res	Link	Chirals	Torsions	Rings
5	SNU	A	1004	-	-	0/4/4/4	0/2/2/2
5	SNU	B	304	-	-	0/4/4/4	0/2/2/2

All (6) bond length outliers are listed below:

Mol	Chain	Res	Type	Atoms	Z	Observed(Å)	Ideal(Å)
5	A	1004	SNU	CAK-NAL	-5.55	1.35	1.45
5	B	304	SNU	CAK-NAL	-5.37	1.36	1.45
5	A	1004	SNU	CAH-NAL	-4.68	1.32	1.39
5	A	1004	SNU	CAI-NAL	-3.67	1.33	1.39
5	B	304	SNU	CAI-NAL	-3.60	1.34	1.39
5	B	304	SNU	CAH-NAL	-2.98	1.34	1.39

All (10) bond angle outliers are listed below:

Mol	Chain	Res	Type	Atoms	Z	Observed(°)	Ideal(°)
5	A	1004	SNU	CAG-CAK-CAF	-5.25	113.76	121.43
5	B	304	SNU	CAG-CAK-CAF	-4.90	114.27	121.43
5	A	1004	SNU	CAG-CAK-NAL	4.60	125.86	119.27
5	B	304	SNU	CAE-CAG-CAK	3.38	123.82	118.99
5	A	1004	SNU	CAE-CAG-CAK	3.29	123.69	118.99
5	B	304	SNU	CAF-CAK-NAL	3.08	123.69	119.27
5	A	1004	SNU	CAD-CAF-CAK	2.99	123.28	118.99
5	B	304	SNU	CAD-CAF-CAK	2.49	122.56	118.99
5	B	304	SNU	CAC-CAI-NAL	-2.39	105.05	107.51
5	A	1004	SNU	CAI-NAL-CAK	-2.12	122.89	126.33

There are no chirality outliers.

There are no torsion outliers.

There are no ring outliers.

3 monomers are involved in 5 short contacts:

Mol	Chain	Res	Type	Clashes	Symm-Clashes
5	B	304	SNU	1	0
5	A	1004	SNU	3	0
4	A	1003	SO4	1	0

5.7 Other polymers [i](#)

There are no such residues in this entry.

5.8 Polymer linkage issues [i](#)

There are no chain breaks in this entry.

6 Fit of model and data

6.1 Protein, DNA and RNA chains

In the following table, the column labelled ‘#RSRZ > 2’ contains the number (and percentage) of RSRZ outliers, followed by percent RSRZ outliers for the chain as percentile scores relative to all X-ray entries and entries of similar resolution. The OWAB column contains the minimum, median, 95th percentile and maximum values of the occupancy-weighted average B-factor per residue. The column labelled ‘Q < 0.9’ lists the number of (and percentage) of residues with an average occupancy less than 0.9.

Mol	Chain	Analysed	<RSRZ>	#RSRZ>2	OWAB(Å ²)	Q<0.9
1	A	145/158 (91%)	0.70	14 (9%) 7 6	14, 21, 46, 70	0
1	B	141/158 (89%)	0.68	17 (12%) 4 3	14, 21, 42, 60	0
All	All	286/316 (90%)	0.69	31 (10%) 5 4	14, 21, 45, 70	0

All (31) RSRZ outliers are listed below:

Mol	Chain	Res	Type	RSRZ
1	A	189	GLY	8.4
1	A	153	SER	7.3
1	A	152	GLU	7.1
1	A	150	VAL	6.3
1	A	151	ILE	5.8
1	A	154	MET	5.6
1	A	143	TYR	5.3
1	B	56	SER	5.3
1	B	167	ASP	4.9
1	B	156	LYS	4.7
1	B	208	ILE	4.5
1	A	190	GLY	4.2
1	A	194	TYR	4.0
1	B	117	ASN	3.6
1	B	154	MET	3.6
1	A	191	ILE	3.5
1	A	156	LYS	3.5
1	B	70	GLY	3.4
1	B	155	ASN	3.2
1	B	209	GLN	3.2
1	B	104	LEU	2.9
1	A	193	GLY	2.9
1	A	155	ASN	2.8
1	B	57	SER	2.7

Continued on next page...

Continued from previous page...

Mol	Chain	Res	Type	RSRZ
1	B	139	ASP	2.7
1	B	207	ASP	2.5
1	A	188	LYS	2.4
1	B	153	SER	2.4
1	B	68	LEU	2.3
1	B	170	GLU	2.2
1	B	71	LYS	2.1

6.2 Non-standard residues in protein, DNA, RNA chains [i](#)

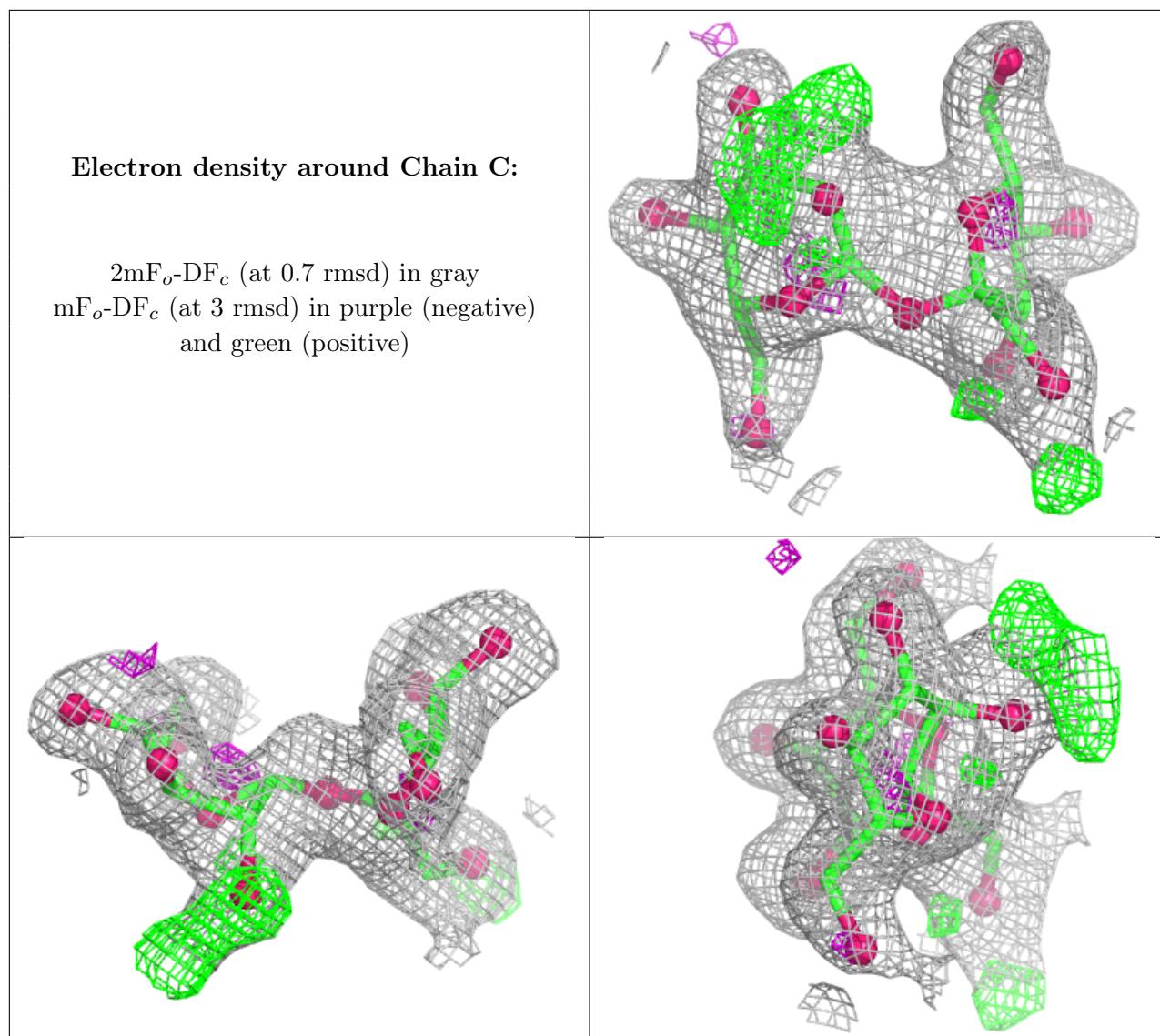
There are no non-standard protein/DNA/RNA residues in this entry.

6.3 Carbohydrates [i](#)

In the following table, the Atoms column lists the number of modelled atoms in the group and the number defined in the chemical component dictionary. The B-factors column lists the minimum, median, 95th percentile and maximum values of B factors of atoms in the group. The column labelled 'Q< 0.9' lists the number of atoms with occupancy less than 0.9.

Mol	Type	Chain	Res	Atoms	RSCC	RSR	B-factors(Å ²)	Q<0.9
2	GLC	C	1	11/12	0.79	0.13	23,30,34,37	0
2	FRU	C	2	12/12	0.85	0.11	25,29,33,34	0

The following is a graphical depiction of the model fit to experimental electron density for oligosaccharide. Each fit is shown from different orientation to approximate a three-dimensional view.



6.4 Ligands [i](#)

In the following table, the Atoms column lists the number of modelled atoms in the group and the number defined in the chemical component dictionary. The B-factors column lists the minimum, median, 95th percentile and maximum values of B factors of atoms in the group. The column labelled 'Q < 0.9' lists the number of atoms with occupancy less than 0.9.

Mol	Type	Chain	Res	Atoms	RSCC	RSR	B-factors(Å ²)	Q<0.9
5	SNU	B	304	12/12	0.77	0.21	31,31,32,32	0
4	SO4	B	303	5/5	0.80	0.19	72,72,73,73	0
5	SNU	A	1004	12/12	0.82	0.21	36,37,38,38	0
4	SO4	A	1003	5/5	0.92	0.18	24,29,33,34	0
3	CD	A	1002	1/1	0.99	0.05	23,23,23,23	0
3	CD	B	301	1/1	0.99	0.02	31,31,31,31	0
3	CD	A	1001	1/1	1.00	0.02	20,20,20,20	0

Continued on next page...

Continued from previous page...

Mol	Type	Chain	Res	Atoms	RSCC	RSR	B-factors(\AA^2)	Q<0.9
3	CD	B	302	1/1	1.00	0.02	31,31,31,31	0

6.5 Other polymers [i](#)

There are no such residues in this entry.