



Full wwPDB X-ray Structure Validation Report ⓘ

Sep 3, 2023 – 06:48 PM EDT

PDB ID : 3T67
Title : Axial Ligand Swapping In Double Mutant Maintains Intradiol-cleavage Chemistry in Protocatechuate 3,4-Dioxygenase
Authors : Purpero, V.M.; Lipscomb, J.D.
Deposited on : 2011-07-28
Resolution : 1.67 Å(reported)

This is a Full wwPDB X-ray Structure Validation Report for a publicly released PDB entry.

We welcome your comments at validation@mail.wwpdb.org

A user guide is available at

<https://www.wwpdb.org/validation/2017/XrayValidationReportHelp>

with specific help available everywhere you see the ⓘ symbol.

The types of validation reports are described at

<http://www.wwpdb.org/validation/2017/FAQs#types>.

The following versions of software and data (see [references ⓘ](#)) were used in the production of this report:

MolProbity : 4.02b-467
Mogul : 1.8.5 (274361), CSD as541be (2020)
Xtriage (Phenix) : 1.13
EDS : 2.35
Percentile statistics : 20191225.v01 (using entries in the PDB archive December 25th 2019)
Refmac : 5.8.0158
CCP4 : 7.0.044 (Gargrove)
Ideal geometry (proteins) : Engh & Huber (2001)
Ideal geometry (DNA, RNA) : Parkinson et al. (1996)
Validation Pipeline (wwPDB-VP) : 2.35

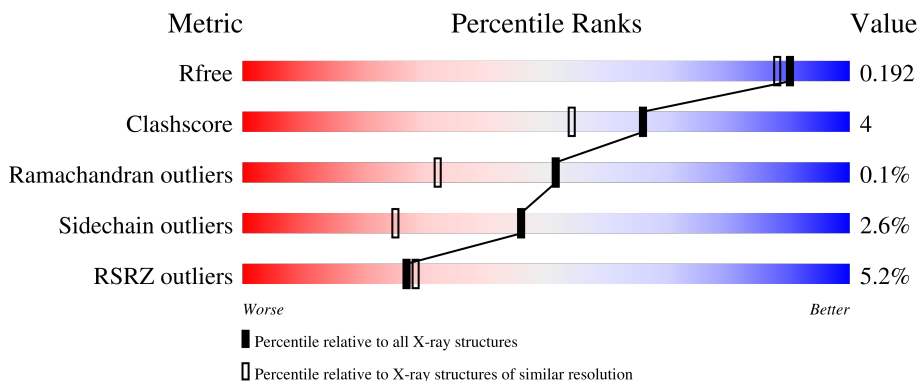
1 Overall quality at a glance

The following experimental techniques were used to determine the structure:

X-RAY DIFFRACTION

The reported resolution of this entry is 1.67 Å.

Percentile scores (ranging between 0-100) for global validation metrics of the entry are shown in the following graphic. The table shows the number of entries on which the scores are based.



Metric	Whole archive (#Entries)	Similar resolution (#Entries, resolution range(Å))
R_{free}	130704	6780 (1.70-1.66)
Clashscore	141614	7310 (1.70-1.66)
Ramachandran outliers	138981	7173 (1.70-1.66)
Sidechain outliers	138945	7172 (1.70-1.66)
RSRZ outliers	127900	6661 (1.70-1.66)

The table below summarises the geometric issues observed across the polymeric chains and their fit to the electron density. The red, orange, yellow and green segments of the lower bar indicate the fraction of residues that contain outliers for ≥ 3 , 2, 1 and 0 types of geometric quality criteria respectively. A grey segment represents the fraction of residues that are not modelled. The numeric value for each fraction is indicated below the corresponding segment, with a dot representing fractions $\leq 5\%$. The upper red bar (where present) indicates the fraction of residues that have poor fit to the electron density. The numeric value is given above the bar.

Mol	Chain	Length	Quality of chain
1	A	200	 8% 90% 10%
1	B	200	 4% 91% 8%
1	C	200	 12% 92% 7%
2	M	238	 2% 91% 9%
2	N	238	 3% 94% 6%

Continued on next page...

Continued from previous page...

Mol	Chain	Length	Quality of chain
2	O	238	<p>4% 91% 8%</p>

The following table lists non-polymeric compounds, carbohydrate monomers and non-standard residues in protein, DNA, RNA chains that are outliers for geometric or electron-density-fit criteria:

Mol	Type	Chain	Res	Chirality	Geometry	Clashes	Electron density
5	CAQ	M	1	-	-	X	-
5	CAQ	N	1	-	-	X	-
5	CAQ	O	1	-	-	X	-

2 Entry composition

There are 7 unique types of molecules in this entry. The entry contains 11464 atoms, of which 0 are hydrogens and 0 are deuteriums.

In the tables below, the ZeroOcc column contains the number of atoms modelled with zero occupancy, the AltConf column contains the number of residues with at least one atom in alternate conformation and the Trace column contains the number of residues modelled with at most 2 atoms.

- Molecule 1 is a protein called Protocatechuate 3,4-dioxygenase alpha chain.

Mol	Chain	Residues	Atoms					ZeroOcc	AltConf	Trace
			Total	C	N	O	S			
1	A	200	Total 1591	C 1009	N 279	O 300	S 3	0	3	0
1	B	200	Total 1580	C 1001	N 277	O 299	S 3	0	1	0
1	C	200	Total 1592	C 1009	N 280	O 300	S 3	0	3	0

- Molecule 2 is a protein called Protocatechuate 3,4-dioxygenase beta chain.

Mol	Chain	Residues	Atoms					ZeroOcc	AltConf	Trace
			Total	C	N	O	S			
2	M	238	Total 1907	C 1212	N 346	O 341	S 8	0	4	0
2	N	238	Total 1896	C 1204	N 344	O 340	S 8	0	2	0
2	O	238	Total 1895	C 1204	N 344	O 339	S 8	0	2	0

- Molecule 3 is SULFATE ION (three-letter code: SO4) (formula: O₄S).



Mol	Chain	Residues	Atoms	ZeroOcc	AltConf
3	A	1	Total O S 5 4 1	0	0
3	B	1	Total O S 5 4 1	0	0
3	C	1	Total O S 5 4 1	0	0

- Molecule 4 is GLYCEROL (three-letter code: GOL) (formula: C₃H₈O₃).



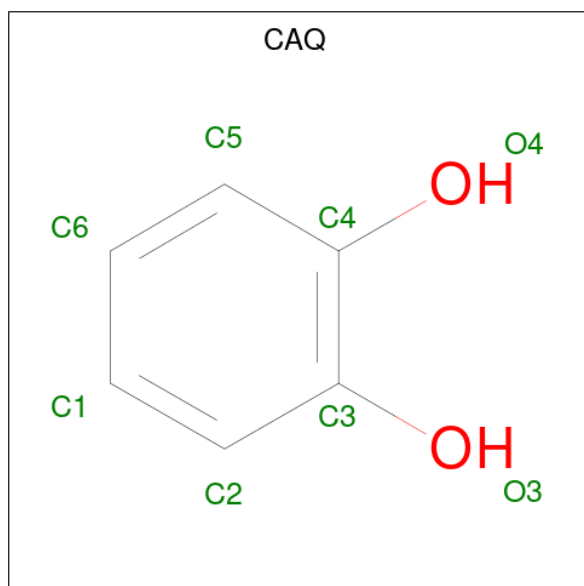
Mol	Chain	Residues	Atoms	ZeroOcc	AltConf
4	A	1	Total C O 6 3 3	0	0

Continued on next page...

Continued from previous page...

Mol	Chain	Residues	Atoms			ZeroOcc	AltConf
4	C	1	Total	C	O	0	0
			6	3	3		

- Molecule 5 is CATECHOL (three-letter code: CAQ) (formula: C₆H₆O₂).



Mol	Chain	Residues	Atoms			ZeroOcc	AltConf
5	C	1	Total	C	O	0	0
			8	6	2		
5	M	1	Total	C	O	0	0
			8	6	2		
5	N	1	Total	C	O	0	0
			8	6	2		
5	O	1	Total	C	O	0	0
			8	6	2		

- Molecule 6 is FE (III) ION (three-letter code: FE) (formula: Fe).

Mol	Chain	Residues	Atoms		ZeroOcc	AltConf
6	M	1	Total	Fe	0	0
			1	1		
6	N	1	Total	Fe	0	0
			1	1		
6	O	1	Total	Fe	0	0
			1	1		

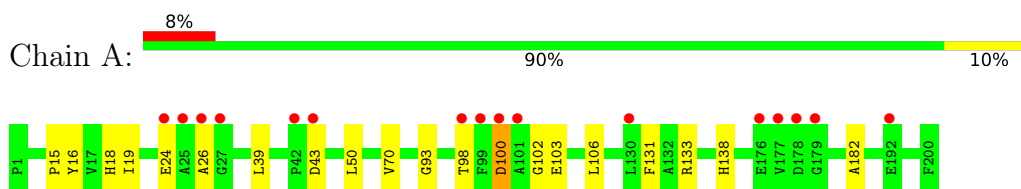
- Molecule 7 is water.

Mol	Chain	Residues	Atoms		ZeroOcc	AltConf
7	A	133	Total 133	O 133	0	0
7	B	151	Total 151	O 151	0	0
7	C	112	Total 112	O 112	0	0
7	M	186	Total 186	O 186	0	0
7	N	188	Total 188	O 188	0	0
7	O	171	Total 171	O 171	0	0

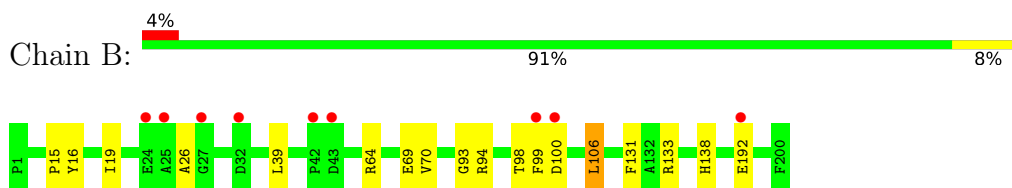
3 Residue-property plots [i](#)

These plots are drawn for all protein, RNA, DNA and oligosaccharide chains in the entry. The first graphic for a chain summarises the proportions of the various outlier classes displayed in the second graphic. The second graphic shows the sequence view annotated by issues in geometry and electron density. Residues are color-coded according to the number of geometric quality criteria for which they contain at least one outlier: green = 0, yellow = 1, orange = 2 and red = 3 or more. A red dot above a residue indicates a poor fit to the electron density ($RSRZ > 2$). Stretches of 2 or more consecutive residues without any outlier are shown as a green connector. Residues present in the sample, but not in the model, are shown in grey.

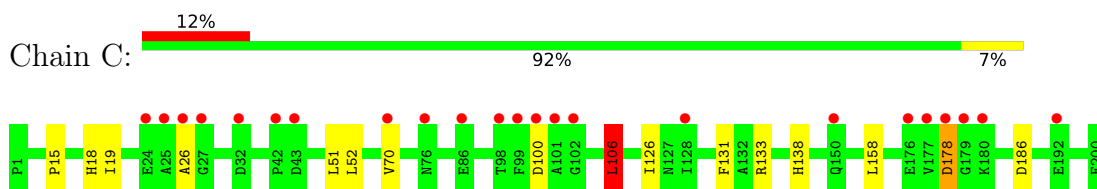
- Molecule 1: Protocatechuate 3,4-dioxygenase alpha chain



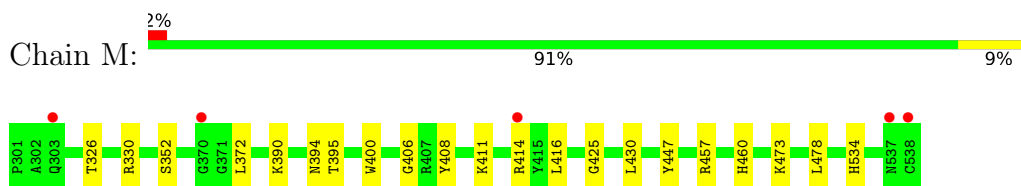
- Molecule 1: Protocatechuate 3,4-dioxygenase alpha chain



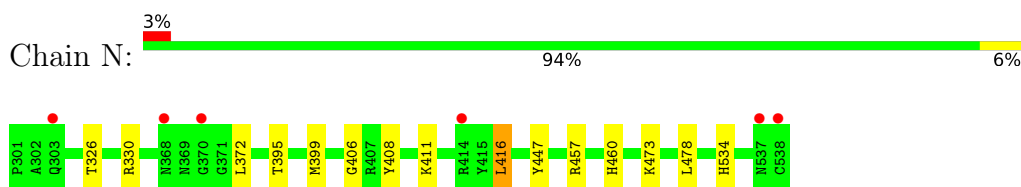
- Molecule 1: Protocatechuate 3,4-dioxygenase alpha chain



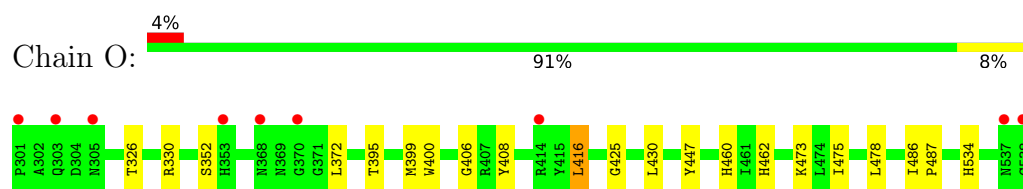
- Molecule 2: Protocatechuate 3,4-dioxygenase beta chain



- Molecule 2: Protocatechuate 3,4-dioxygenase beta chain



- Molecule 2: Protocatechuate 3,4-dioxygenase beta chain



4 Data and refinement statistics

Property	Value	Source
Space group	I 2 2 2	Depositor
Cell constants a, b, c, α , β , γ	128.01Å 140.78Å 168.19Å 90.00° 90.00° 90.00°	Depositor
Resolution (Å)	30.68 – 1.67 30.68 – 1.67	Depositor EDS
% Data completeness (in resolution range)	99.0 (30.68-1.67) 99.0 (30.68-1.67)	Depositor EDS
R_{merge}	0.06	Depositor
R_{sym}	(Not available)	Depositor
$\langle I/\sigma(I) \rangle$ ¹	3.82 (at 1.67Å)	Xtrriage
Refinement program	REFMAC	Depositor
R, R_{free}	0.165 , 0.189 0.168 , 0.192	Depositor DCC
R_{free} test set	8621 reflections (5.00%)	wwPDB-VP
Wilson B-factor (Å ²)	17.8	Xtrriage
Anisotropy	0.019	Xtrriage
Bulk solvent k_{sol} (e/Å ³), B_{sol} (Å ²)	0.40 , 44.8	EDS
L-test for twinning ²	$\langle L \rangle = 0.50$, $\langle L^2 \rangle = 0.33$	Xtrriage
Estimated twinning fraction	No twinning to report.	Xtrriage
F_o, F_c correlation	0.96	EDS
Total number of atoms	11464	wwPDB-VP
Average B, all atoms (Å ²)	21.0	wwPDB-VP

Xtrriage's analysis on translational NCS is as follows: *The largest off-origin peak in the Patterson function is 2.63% of the height of the origin peak. No significant pseudotranslation is detected.*

¹Intensities estimated from amplitudes.

²Theoretical values of $\langle |L| \rangle$, $\langle L^2 \rangle$ for acentric reflections are 0.5, 0.333 respectively for untwinned datasets, and 0.375, 0.2 for perfectly twinned datasets.

5 Model quality [i](#)

5.1 Standard geometry [i](#)

Bond lengths and bond angles in the following residue types are not validated in this section: CAQ, GOL, FE, SO4

The Z score for a bond length (or angle) is the number of standard deviations the observed value is removed from the expected value. A bond length (or angle) with $|Z| > 5$ is considered an outlier worth inspection. RMSZ is the root-mean-square of all Z scores of the bond lengths (or angles).

Mol	Chain	Bond lengths		Bond angles	
		RMSZ	# Z >5	RMSZ	# Z >5
1	A	0.62	0/1641	0.68	0/2235
1	B	0.61	0/1623	0.71	1/2210 (0.0%)
1	C	0.58	0/1642	0.67	1/2236 (0.0%)
2	M	0.63	0/1976	0.74	0/2690
2	N	0.63	0/1959	0.72	1/2668 (0.0%)
2	O	0.61	0/1958	0.71	1/2667 (0.0%)
All	All	0.61	0/10799	0.71	4/14706 (0.0%)

There are no bond length outliers.

All (4) bond angle outliers are listed below:

Mol	Chain	Res	Type	Atoms	Z	Observed(°)	Ideal(°)
1	B	106	LEU	CA-CB-CG	7.09	131.60	115.30
1	C	106	LEU	CA-CB-CG	5.66	128.31	115.30
2	N	416	LEU	CA-CB-CG	5.51	127.97	115.30
2	O	416	LEU	CA-CB-CG	5.48	127.90	115.30

There are no chirality outliers.

There are no planarity outliers.

5.2 Too-close contacts [i](#)

In the following table, the Non-H and H(model) columns list the number of non-hydrogen atoms and hydrogen atoms in the chain respectively. The H(added) column lists the number of hydrogen atoms added and optimized by MolProbity. The Clashes column lists the number of clashes within the asymmetric unit, whereas Symm-Clashes lists symmetry-related clashes.

Mol	Chain	Non-H	H(model)	H(added)	Clashes	Symm-Clashes
1	A	1591	0	1535	17	0

Continued on next page...

Continued from previous page...

Mol	Chain	Non-H	H(model)	H(added)	Clashes	Symm-Clashes
1	B	1580	0	1521	13	0
1	C	1592	0	1534	15	0
2	M	1907	0	1872	15	0
2	N	1896	0	1850	10	0
2	O	1895	0	1853	16	0
3	A	5	0	0	0	0
3	B	5	0	0	0	0
3	C	5	0	0	0	0
4	A	6	0	8	0	0
4	C	6	0	8	2	0
5	C	8	0	6	0	0
5	M	8	0	4	6	0
5	N	8	0	4	6	0
5	O	8	0	4	7	0
6	M	1	0	0	0	0
6	N	1	0	0	0	0
6	O	1	0	0	0	0
7	A	133	0	0	3	0
7	B	151	0	0	2	0
7	C	112	0	0	2	0
7	M	186	0	0	2	0
7	N	188	0	0	0	0
7	O	171	0	0	0	0
All	All	11464	0	10199	82	0

The all-atom clashscore is defined as the number of clashes found per 1000 atoms (including hydrogen atoms). The all-atom clashscore for this structure is 4.

All (82) close contacts within the same asymmetric unit are listed below, sorted by their clash magnitude.

Atom-1	Atom-2	Interatomic distance (Å)	Clash overlap (Å)
2:M:394[A]:ASN:ND2	7:M:899:HOH:O	2.04	0.83
2:N:447[A]:TYR:OH	5:N:1:CAQ:C3	2.27	0.82
1:A:19[A]:ILE:HG22	1:A:26:ALA:HB1	1.65	0.79
2:O:447[A]:TYR:OH	5:O:1:CAQ:C4	2.30	0.79
1:C:186:ASP:H	4:C:202:GOL:H32	1.48	0.78
1:C:19[B]:ILE:HG22	1:C:26:ALA:HB1	1.66	0.78
2:M:447[A]:TYR:OH	5:M:1:CAQ:C3	2.33	0.76
1:B:70:VAL:HG11	1:B:106:LEU:HD21	1.70	0.74
2:M:390[B]:LYS:HD2	7:M:48:HOH:O	1.88	0.73
1:B:64:ARG:NE	1:B:99:PHE:O	2.22	0.68

Continued on next page...

Continued from previous page...

Atom-1	Atom-2	Interatomic distance (Å)	Clash overlap (Å)
2:O:447[A]:TYR:OH	5:O:1:CAQ:O4	2.12	0.68
1:C:70:VAL:HG11	1:C:106:LEU:HD21	1.79	0.65
1:A:98[A]:THR:HG22	1:A:103:GLU:H	1.61	0.64
1:C:15:PRO:HG2	5:O:1:CAQ:H2	1.79	0.62
1:A:15:PRO:HD2	5:M:1:CAQ:C5	2.29	0.62
2:O:447[A]:TYR:CE1	2:O:460:HIS:HE1	2.19	0.61
2:M:408:TYR:HE2	2:M:447[A]:TYR:CZ	2.20	0.60
1:C:19[B]:ILE:HG22	1:C:26:ALA:CB	2.31	0.60
1:B:19[B]:ILE:HG22	1:B:26:ALA:HB1	1.83	0.59
1:A:19[A]:ILE:HG22	1:A:26:ALA:CB	2.33	0.58
2:N:408:TYR:HE2	2:N:447[A]:TYR:CZ	2.21	0.58
1:B:16:TYR:CD2	5:N:1:CAQ:H5	2.39	0.58
1:A:98[A]:THR:HG23	1:A:102:GLY:H	1.67	0.57
2:O:408:TYR:HE2	2:O:447[A]:TYR:CZ	2.23	0.57
1:A:98[A]:THR:HG23	1:A:102:GLY:N	2.21	0.56
1:A:98[A]:THR:HG21	7:A:869:HOH:O	2.06	0.54
2:M:447[A]:TYR:OH	5:M:1:CAQ:O3	2.25	0.54
1:A:133:ARG:HG2	2:M:326[A]:THR:HG21	1.90	0.54
1:A:70:VAL:HG11	1:A:106:LEU:HD11	1.90	0.54
1:A:98[A]:THR:OG1	1:A:100:ASP:OD2	2.24	0.54
2:O:447[A]:TYR:CE1	2:O:460:HIS:CE1	2.97	0.53
2:M:447[A]:TYR:CE2	2:M:460:HIS:HE1	2.28	0.52
1:B:133:ARG:HG2	2:N:326:THR:HG21	1.93	0.50
1:C:186:ASP:N	4:C:202:GOL:H32	2.23	0.50
1:C:133:ARG:HG2	2:O:326[A]:THR:HG21	1.93	0.49
2:M:326[A]:THR:HG22	2:M:330:ARG:HD2	1.94	0.49
1:B:16:TYR:CE2	5:N:1:CAQ:H5	2.48	0.48
2:N:478:LEU:C	2:N:478:LEU:HD23	2.34	0.48
2:N:406:GLY:O	2:N:447[B]:TYR:HD2	1.95	0.48
2:M:478:LEU:HD23	2:M:478:LEU:C	2.34	0.48
1:C:15:PRO:HG2	5:O:1:CAQ:C2	2.44	0.47
2:O:352:SER:HA	2:O:430:LEU:HD21	1.97	0.47
1:C:18[A]:HIS:HE1	7:C:919:HOH:O	1.98	0.47
1:C:15:PRO:HD2	5:O:1:CAQ:C2	2.44	0.47
1:A:18[B]:HIS:HE1	7:A:921:HOH:O	1.97	0.46
1:A:18[B]:HIS:CE1	7:A:921:HOH:O	2.69	0.46
1:A:131:PHE:CE2	1:A:138:HIS:HB3	2.49	0.46
2:N:457:ARG:HD3	5:N:1:CAQ:H2	1.97	0.46
2:O:326[A]:THR:HG22	2:O:330:ARG:HD2	1.96	0.46
2:M:457:ARG:NH1	5:M:1:CAQ:O3	2.48	0.46
2:O:406:GLY:O	2:O:447[B]:TYR:HD2	1.98	0.46

Continued on next page...

Continued from previous page...

Atom-1	Atom-2	Interatomic distance (Å)	Clash overlap (Å)
2:M:406:GLY:O	2:M:447[B]:TYR:HD2	1.99	0.45
1:C:18[A]:HIS:CE1	7:C:919:HOH:O	2.70	0.45
2:M:352:SER:HA	2:M:430:LEU:HD21	1.98	0.45
1:B:131:PHE:CE2	1:B:138:HIS:HB3	2.52	0.45
2:M:457:ARG:HD3	5:M:1:CAQ:H2	1.98	0.45
2:N:447[A]:TYR:CE1	2:N:460:HIS:HE1	2.34	0.45
1:C:131:PHE:CE2	1:C:138:HIS:HB3	2.52	0.45
1:B:69:GLU:HG2	1:B:94:ARG:HG2	1.99	0.44
1:B:15:PRO:HD2	5:N:1:CAQ:C5	2.48	0.44
2:M:447[A]:TYR:CE2	2:M:460:HIS:CE1	3.05	0.44
1:C:51:LEU:HD11	1:C:126:ILE:CD1	2.48	0.43
2:N:408:TYR:CE2	2:N:447[A]:TYR:CZ	3.06	0.43
1:C:15:PRO:CG	5:O:1:CAQ:C2	2.97	0.43
1:A:50:LEU:O	1:A:182:ALA:HA	2.19	0.43
2:O:408:TYR:HE2	2:O:447[A]:TYR:CE1	2.37	0.43
1:A:39:LEU:HD11	1:A:93:GLY:HA3	2.00	0.42
1:B:98:THR:HA	7:B:938:HOH:O	2.18	0.42
1:C:131:PHE:CD2	2:O:475:ILE:HD12	2.54	0.42
1:B:39:LEU:HD11	1:B:93:GLY:HA3	2.01	0.42
2:O:447[A]:TYR:OH	5:O:1:CAQ:C3	2.66	0.42
2:O:478:LEU:C	2:O:478:LEU:HD23	2.40	0.42
2:M:400:TRP:HA	2:M:425:GLY:O	2.20	0.42
1:B:15:PRO:HG2	5:N:1:CAQ:H5	2.02	0.41
2:N:447[A]:TYR:CE1	2:N:460:HIS:CE1	3.09	0.41
1:A:98[A]:THR:CG2	1:A:103:GLU:H	2.30	0.41
2:O:486:ILE:HB	2:O:487:PRO:HD3	2.02	0.41
1:A:16:TYR:CD2	5:M:1:CAQ:H5	2.55	0.40
2:O:399:MET:HA	2:O:462:HIS:O	2.20	0.40
1:B:99:PHE:N	7:B:938:HOH:O	2.48	0.40
2:N:326:THR:HG22	2:N:330:ARG:HD2	2.02	0.40
2:O:400:TRP:HA	2:O:425:GLY:O	2.21	0.40

There are no symmetry-related clashes.

5.3 Torsion angles [i](#)

5.3.1 Protein backbone [i](#)

In the following table, the Percentiles column shows the percent Ramachandran outliers of the chain as a percentile score with respect to all X-ray entries followed by that with respect to entries of similar resolution.

The Analysed column shows the number of residues for which the backbone conformation was analysed, and the total number of residues.

Mol	Chain	Analysed	Favoured	Allowed	Outliers	Percentiles	
1	A	201/200 (100%)	196 (98%)	5 (2%)	0	100	100
1	B	199/200 (100%)	194 (98%)	5 (2%)	0	100	100
1	C	201/200 (100%)	196 (98%)	4 (2%)	1 (0%)	29	12
2	M	240/238 (101%)	234 (98%)	6 (2%)	0	100	100
2	N	238/238 (100%)	233 (98%)	5 (2%)	0	100	100
2	O	238/238 (100%)	235 (99%)	3 (1%)	0	100	100
All	All	1317/1314 (100%)	1288 (98%)	28 (2%)	1 (0%)	51	32

All (1) Ramachandran outliers are listed below:

Mol	Chain	Res	Type
1	C	178	ASP

5.3.2 Protein sidechains [i](#)

In the following table, the Percentiles column shows the percent sidechain outliers of the chain as a percentile score with respect to all X-ray entries followed by that with respect to entries of similar resolution.

The Analysed column shows the number of residues for which the sidechain conformation was analysed, and the total number of residues.

Mol	Chain	Analysed	Rotameric	Outliers	Percentiles	
1	A	166/163 (102%)	163 (98%)	3 (2%)	59	40
1	B	164/163 (101%)	162 (99%)	2 (1%)	71	57
1	C	166/163 (102%)	161 (97%)	5 (3%)	41	20
2	M	206/202 (102%)	199 (97%)	7 (3%)	37	15
2	N	204/202 (101%)	197 (97%)	7 (3%)	37	15
2	O	204/202 (101%)	199 (98%)	5 (2%)	47	26
All	All	1110/1095 (101%)	1081 (97%)	29 (3%)	46	25

All (29) residues with a non-rotameric sidechain are listed below:

Mol	Chain	Res	Type
1	A	24	GLU

Continued on next page...

Continued from previous page...

Mol	Chain	Res	Type
1	A	43	ASP
1	A	100	ASP
1	B	100	ASP
1	B	192	GLU
1	C	52	LEU
1	C	100	ASP
1	C	106	LEU
1	C	158	LEU
1	C	178	ASP
2	M	372	LEU
2	M	395	THR
2	M	411	LYS
2	M	414	ARG
2	M	416	LEU
2	M	473	LYS
2	M	534	HIS
2	N	372	LEU
2	N	395	THR
2	N	399	MET
2	N	411	LYS
2	N	416	LEU
2	N	473	LYS
2	N	534	HIS
2	O	372	LEU
2	O	395	THR
2	O	416	LEU
2	O	473	LYS
2	O	534	HIS

Sometimes sidechains can be flipped to improve hydrogen bonding and reduce clashes. All (2) such sidechains are listed below:

Mol	Chain	Res	Type
2	M	537	ASN
2	N	537	ASN

5.3.3 RNA

There are no RNA molecules in this entry.

5.4 Non-standard residues in protein, DNA, RNA chains [i](#)

There are no non-standard protein/DNA/RNA residues in this entry.

5.5 Carbohydrates [i](#)

There are no monosaccharides in this entry.

5.6 Ligand geometry [i](#)

Of 12 ligands modelled in this entry, 3 are monoatomic - leaving 9 for Mogul analysis.

In the following table, the Counts columns list the number of bonds (or angles) for which Mogul statistics could be retrieved, the number of bonds (or angles) that are observed in the model and the number of bonds (or angles) that are defined in the Chemical Component Dictionary. The Link column lists molecule types, if any, to which the group is linked. The Z score for a bond length (or angle) is the number of standard deviations the observed value is removed from the expected value. A bond length (or angle) with $|Z| > 2$ is considered an outlier worth inspection. RMSZ is the root-mean-square of all Z scores of the bond lengths (or angles).

Mol	Type	Chain	Res	Link	Bond lengths			Bond angles		
					Counts	RMSZ	# Z > 2	Counts	RMSZ	# Z > 2
3	SO4	C	201	-	4,4,4	0.14	0	6,6,6	0.15	0
5	CAQ	M	1	6	8,8,8	2.15	1 (12%)	10,10,10	1.58	2 (20%)
3	SO4	A	201	-	4,4,4	0.15	0	6,6,6	0.16	0
4	GOL	C	202	-	5,5,5	0.43	0	5,5,5	0.47	0
3	SO4	B	201	-	4,4,4	0.14	0	6,6,6	0.18	0
5	CAQ	N	1	6	8,8,8	2.20	1 (12%)	10,10,10	1.14	0
5	CAQ	O	1	6	8,8,8	2.08	1 (12%)	10,10,10	1.53	1 (10%)
4	GOL	A	202	-	5,5,5	0.23	0	5,5,5	0.58	0
5	CAQ	C	203	-	8,8,8	2.20	1 (12%)	10,10,10	0.69	0

In the following table, the Chirals column lists the number of chiral outliers, the number of chiral centers analysed, the number of these observed in the model and the number defined in the Chemical Component Dictionary. Similar counts are reported in the Torsion and Rings columns. '-' means no outliers of that kind were identified.

Mol	Type	Chain	Res	Link	Chirals	Torsions	Rings
5	CAQ	M	1	6	-	-	0/1/1/1
4	GOL	C	202	-	-	2/4/4/4	-
5	CAQ	N	1	6	-	-	0/1/1/1
5	CAQ	O	1	6	-	-	0/1/1/1
4	GOL	A	202	-	-	2/4/4/4	-

Continued on next page...

Continued from previous page...

Mol	Type	Chain	Res	Link	Chirals	Torsions	Rings
5	CAQ	C	203	-	-	-	0/1/1/1

All (4) bond length outliers are listed below:

Mol	Chain	Res	Type	Atoms	Z	Observed(Å)	Ideal(Å)
5	C	203	CAQ	C4-C3	5.90	1.49	1.40
5	N	1	CAQ	C4-C3	5.83	1.49	1.40
5	M	1	CAQ	C4-C3	5.56	1.49	1.40
5	O	1	CAQ	C4-C3	5.26	1.48	1.40

All (3) bond angle outliers are listed below:

Mol	Chain	Res	Type	Atoms	Z	Observed(°)	Ideal(°)
5	M	1	CAQ	C5-C4-C3	-3.66	115.64	119.67
5	O	1	CAQ	C2-C3-C4	-3.41	115.92	119.67
5	M	1	CAQ	C2-C3-C4	2.16	122.03	119.67

There are no chirality outliers.

All (4) torsion outliers are listed below:

Mol	Chain	Res	Type	Atoms
4	A	202	GOL	C1-C2-C3-O3
4	C	202	GOL	O1-C1-C2-C3
4	A	202	GOL	O2-C2-C3-O3
4	C	202	GOL	O1-C1-C2-O2

There are no ring outliers.

4 monomers are involved in 21 short contacts:

Mol	Chain	Res	Type	Clashes	Symm-Clashes
5	M	1	CAQ	6	0
4	C	202	GOL	2	0
5	N	1	CAQ	6	0
5	O	1	CAQ	7	0

5.7 Other polymers [i](#)

There are no such residues in this entry.

5.8 Polymer linkage issues

There are no chain breaks in this entry.

6 Fit of model and data

6.1 Protein, DNA and RNA chains

In the following table, the column labelled ‘#RSRZ > 2’ contains the number (and percentage) of RSRZ outliers, followed by percent RSRZ outliers for the chain as percentile scores relative to all X-ray entries and entries of similar resolution. The OWAB column contains the minimum, median, 95th percentile and maximum values of the occupancy-weighted average B-factor per residue. The column labelled ‘Q < 0.9’ lists the number of (and percentage) of residues with an average occupancy less than 0.9.

Mol	Chain	Analysed	<RSRZ>	#RSRZ>2	OWAB(Å ²)	Q<0.9
1	A	200/200 (100%)	0.11	16 (8%) 12 13	14, 19, 34, 44	0
1	B	200/200 (100%)	0.00	9 (4%) 33 35	13, 19, 29, 37	1 (0%)
1	C	200/200 (100%)	0.46	23 (11%) 4 5	14, 23, 37, 47	0
2	M	238/238 (100%)	-0.16	5 (2%) 63 67	14, 17, 29, 39	0
2	N	238/238 (100%)	-0.18	6 (2%) 57 60	14, 17, 27, 39	0
2	O	238/238 (100%)	-0.09	9 (3%) 40 43	15, 19, 29, 39	0
All	All	1314/1314 (100%)	0.01	68 (5%) 27 28	13, 19, 32, 47	1 (0%)

All (68) RSRZ outliers are listed below:

Mol	Chain	Res	Type	RSRZ
1	C	178	ASP	5.8
1	C	99	PHE	5.8
2	M	538	CYS	5.6
1	A	178	ASP	5.5
1	C	43	ASP	4.9
2	N	538	CYS	4.7
2	O	538	CYS	4.7
1	C	179	GLY	4.7
1	C	100	ASP	4.7
1	C	177	VAL	4.7
1	B	99	PHE	4.4
1	A	99	PHE	4.3
1	C	101	ALA	4.3
1	A	101	ALA	4.2
2	N	414	ARG	4.0
2	N	537	ASN	4.0
2	M	370	GLY	3.8
2	O	414	ARG	3.6
1	A	98[A]	THR	3.6

Continued on next page...

Continued from previous page...

Mol	Chain	Res	Type	RSRZ
2	O	301	PRO	3.6
1	C	27	GLY	3.6
1	A	100	ASP	3.5
1	C	42	PRO	3.5
1	B	100	ASP	3.5
2	O	537	ASN	3.4
2	O	303	GLN	3.4
1	A	27	GLY	3.2
1	C	70	VAL	3.1
2	M	537	ASN	3.1
1	C	180	LYS	3.0
2	O	370	GLY	3.0
1	A	43	ASP	3.0
1	C	26	ALA	3.0
1	C	24	GLU	3.0
1	A	179	GLY	3.0
1	C	176	GLU	2.9
1	A	24	GLU	2.9
1	C	25	ALA	2.9
2	M	414	ARG	2.8
1	B	43	ASP	2.8
1	B	27	GLY	2.8
1	B	25	ALA	2.8
1	B	42	PRO	2.7
1	B	192	GLU	2.6
1	C	32	ASP	2.6
2	N	370	GLY	2.6
1	C	128	ILE	2.6
2	N	303	GLN	2.6
2	O	353	HIS	2.5
1	C	76[A]	ASN	2.5
1	C	150	GLN	2.5
2	O	305	ASN	2.5
1	A	176	GLU	2.5
1	A	42	PRO	2.4
1	C	86	GLU	2.4
1	C	192	GLU	2.3
2	O	368	ASN	2.3
1	A	130	LEU	2.3
1	A	177	VAL	2.3
1	B	24	GLU	2.3
1	A	192	GLU	2.2

Continued on next page...

Continued from previous page...

Mol	Chain	Res	Type	RSRZ
1	C	98	THR	2.2
1	A	25	ALA	2.2
2	N	368	ASN	2.2
2	M	303	GLN	2.0
1	C	102	GLY	2.0
1	A	26	ALA	2.0
1	B	32	ASP	2.0

6.2 Non-standard residues in protein, DNA, RNA chains [i](#)

There are no non-standard protein/DNA/RNA residues in this entry.

6.3 Carbohydrates [i](#)

There are no monosaccharides in this entry.

6.4 Ligands [i](#)

In the following table, the Atoms column lists the number of modelled atoms in the group and the number defined in the chemical component dictionary. The B-factors column lists the minimum, median, 95th percentile and maximum values of B factors of atoms in the group. The column labelled 'Q< 0.9' lists the number of atoms with occupancy less than 0.9.

Mol	Type	Chain	Res	Atoms	RSCC	RSR	B-factors(Å ²)	Q<0.9
5	CAQ	C	203	8/8	0.81	0.21	33,33,34,37	0
4	GOL	A	202	6/6	0.83	0.14	34,37,38,38	0
5	CAQ	O	1	8/8	0.84	0.23	24,28,30,31	0
5	CAQ	M	1	8/8	0.86	0.19	24,28,30,30	0
4	GOL	C	202	6/6	0.86	0.12	40,41,42,42	0
5	CAQ	N	1	8/8	0.89	0.25	23,28,29,30	0
3	SO4	B	201	5/5	0.94	0.14	48,48,49,49	5
3	SO4	C	201	5/5	0.94	0.15	46,47,47,48	5
3	SO4	A	201	5/5	0.96	0.21	54,55,55,55	0
6	FE	M	600	1/1	0.99	0.04	18,18,18,18	1
6	FE	N	600	1/1	0.99	0.04	17,17,17,17	1
6	FE	O	600	1/1	1.00	0.04	18,18,18,18	1

6.5 Other polymers [i](#)

There are no such residues in this entry.