



Full wwPDB X-ray Structure Validation Report ⓘ

Jun 13, 2024 – 01:24 AM EDT

PDB ID : 3RV8
Title : Structure of a *M. tuberculosis* Salicylate Synthase, MbtI, in Complex with an Inhibitor with Cyclopropyl R-Group
Authors : Chi, G.; Bulloch, E.M.M.; Manos-Turvey, A.; Payne, R.J.; Lott, J.S.; TB Structural Genomics Consortium (TBSGC)
Deposited on : 2011-05-06
Resolution : 2.29 Å(reported)

This is a Full wwPDB X-ray Structure Validation Report for a publicly released PDB entry.

We welcome your comments at validation@mail.wwpdb.org

A user guide is available at

<https://www.wwpdb.org/validation/2017/XrayValidationReportHelp>

with specific help available everywhere you see the ⓘ symbol.

The types of validation reports are described at

<http://www.wwpdb.org/validation/2017/FAQs#types>.

The following versions of software and data (see [references ⓘ](#)) were used in the production of this report:

MolProbity : 4.02b-467
Mogul : 2022.3.0, CSD as543be (2022)
Xtriage (Phenix) : 1.20.1
EDS : 2.36.2
buster-report : 1.1.7 (2018)
Percentile statistics : 20191225.v01 (using entries in the PDB archive December 25th 2019)
Refmac : 5.8.0158
CCP4 : 7.0.044 (Gargrove)
Ideal geometry (proteins) : Engh & Huber (2001)
Ideal geometry (DNA, RNA) : Parkinson et al. (1996)
Validation Pipeline (wwPDB-VP) : 2.36.2

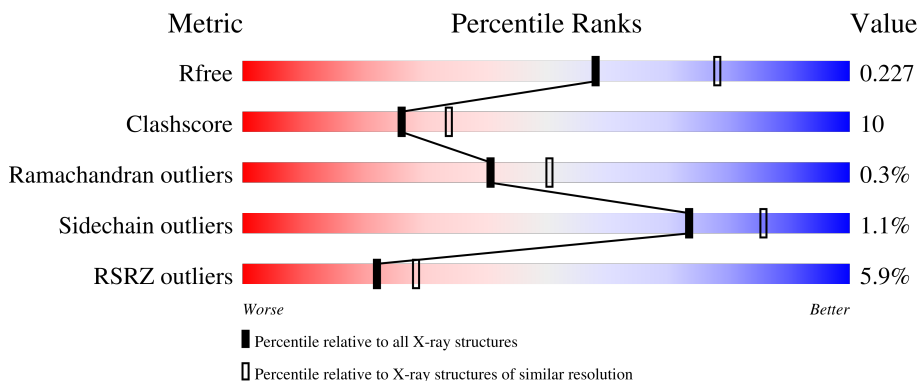
1 Overall quality at a glance

The following experimental techniques were used to determine the structure:

X-RAY DIFFRACTION

The reported resolution of this entry is 2.29 Å.

Percentile scores (ranging between 0-100) for global validation metrics of the entry are shown in the following graphic. The table shows the number of entries on which the scores are based.



Metric	Whole archive (#Entries)	Similar resolution (#Entries, resolution range(Å))
R_{free}	130704	5042 (2.30-2.30)
Clashscore	141614	5643 (2.30-2.30)
Ramachandran outliers	138981	5575 (2.30-2.30)
Sidechain outliers	138945	5575 (2.30-2.30)
RSRZ outliers	127900	4938 (2.30-2.30)

The table below summarises the geometric issues observed across the polymeric chains and their fit to the electron density. The red, orange, yellow and green segments of the lower bar indicate the fraction of residues that contain outliers for ≥ 3 , 2, 1 and 0 types of geometric quality criteria respectively. A grey segment represents the fraction of residues that are not modelled. The numeric value for each fraction is indicated below the corresponding segment, with a dot representing fractions $\leq 5\%$. The upper red bar (where present) indicates the fraction of residues that have poor fit to the electron density. The numeric value is given above the bar.

Mol	Chain	Length	Quality of chain
1	A	450	 4% 76% 17% • 7%
1	B	450	 4% 80% 16% • •
1	C	450	 5% 75% 20% • •
1	D	450	 10% 74% 19% • 7%

2 Entry composition [i](#)

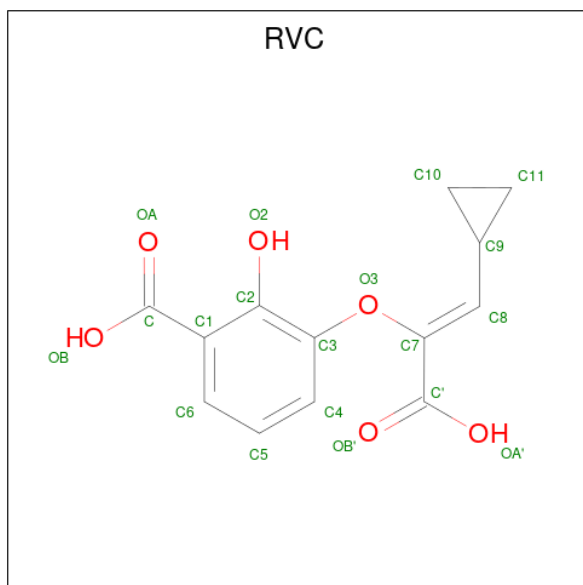
There are 4 unique types of molecules in this entry. The entry contains 13158 atoms, of which 0 are hydrogens and 0 are deuteriums.

In the tables below, the ZeroOcc column contains the number of atoms modelled with zero occupancy, the AltConf column contains the number of residues with at least one atom in alternate conformation and the Trace column contains the number of residues modelled with at most 2 atoms.

- Molecule 1 is a protein called Isochorismate synthase/isochorismate-pyruvate lyase mbtI.

Mol	Chain	Residues	Atoms					ZeroOcc	AltConf	Trace
			Total	C	N	O	S			
1	A	418	Total 3143	C 1977	N 559	O 597	S 10	0	1	0
1	B	432	Total 3231	C 2027	N 580	O 614	S 10	0	0	0
1	C	430	Total 3241	C 2035	N 579	O 617	S 10	0	0	0
1	D	420	Total 3130	C 1971	N 552	O 597	S 10	0	0	0

- Molecule 2 is 3-{[(Z)-1-carboxy-2-cyclopropylethenyl]oxy}-2-hydroxybenzoic acid (three-letter code: RVC) (formula: C₁₃H₁₂O₆).



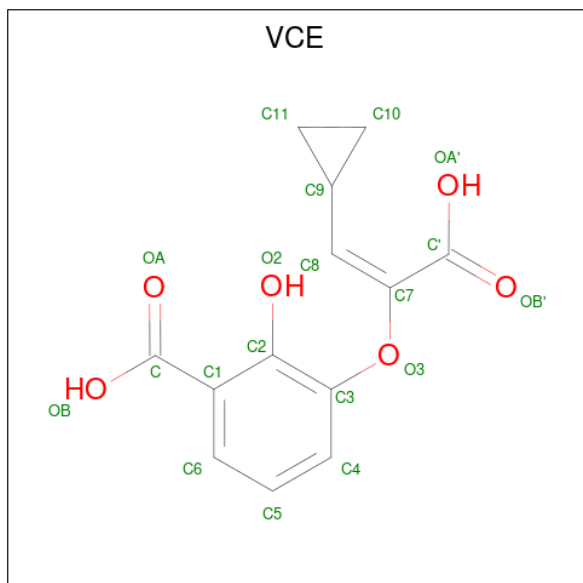
Mol	Chain	Residues	Atoms			ZeroOcc	AltConf
			Total	C	O		
2	A	1	Total 19	C 13	O 6	0	0
2	B	1	Total 19	C 13	O 6	0	0

Continued on next page...

Continued from previous page...

Mol	Chain	Residues	Atoms		ZeroOcc	AltConf	
2	C	1	Total	C	O	0	1
			19	13	6		
2	D	1	Total	C	O	0	0
			19	13	6		

- Molecule 3 is 3-{[(E)-1-carboxy-2-cyclopropylethenyl]oxy}-2-hydroxybenzoic acid (three-letter code: VCE) (formula: C₁₃H₁₂O₆).



Mol	Chain	Residues	Atoms		ZeroOcc	AltConf	
3	C	1	Total	C	O	0	1
			19	13	6		

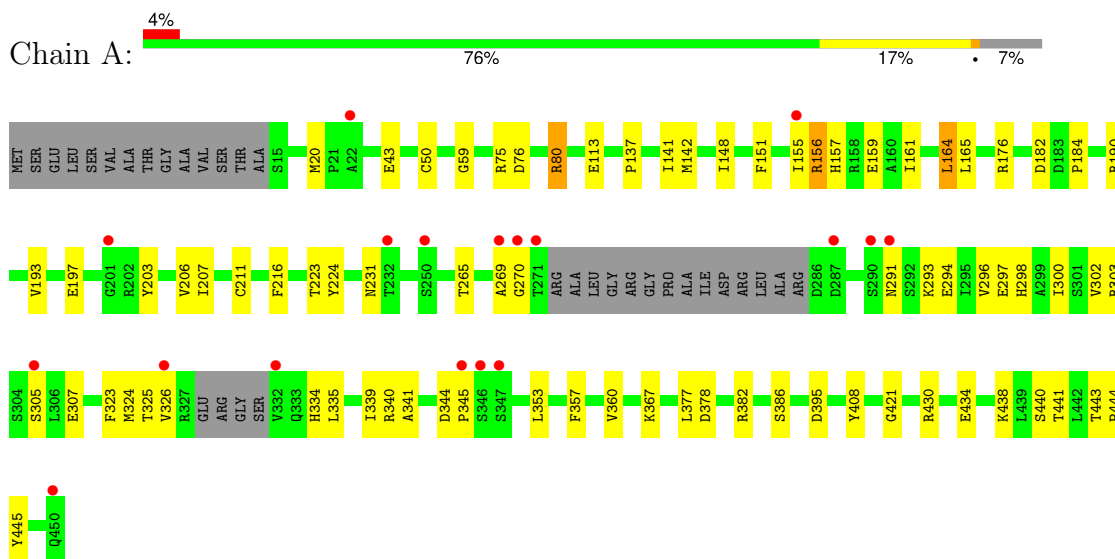
- Molecule 4 is water.

Mol	Chain	Residues	Atoms		ZeroOcc	AltConf
4	A	70	Total	O	0	0
			70	70		
4	B	89	Total	O	0	0
			89	89		
4	C	109	Total	O	0	0
			109	109		
4	D	50	Total	O	0	0
			50	50		

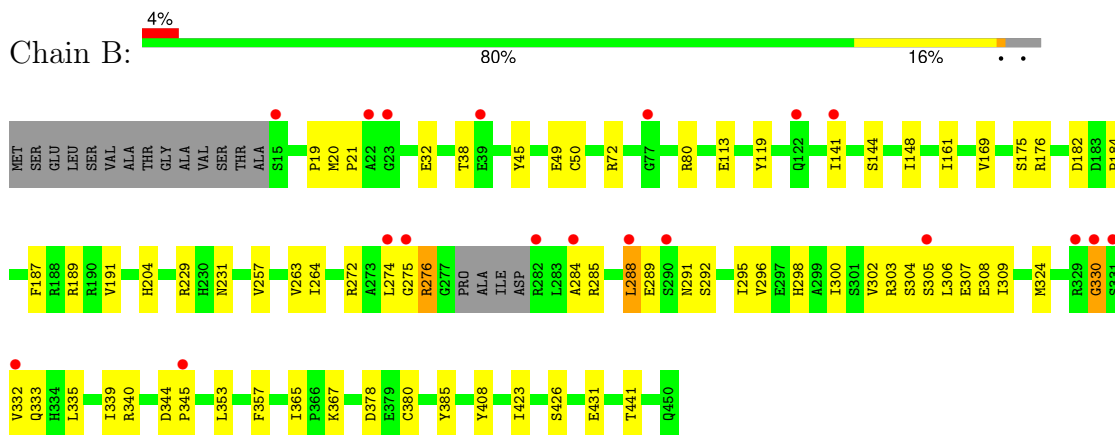
3 Residue-property plots i

These plots are drawn for all protein, RNA, DNA and oligosaccharide chains in the entry. The first graphic for a chain summarises the proportions of the various outlier classes displayed in the second graphic. The second graphic shows the sequence view annotated by issues in geometry and electron density. Residues are color-coded according to the number of geometric quality criteria for which they contain at least one outlier: green = 0, yellow = 1, orange = 2 and red = 3 or more. A red dot above a residue indicates a poor fit to the electron density ($RSRZ > 2$). Stretches of 2 or more consecutive residues without any outlier are shown as a green connector. Residues present in the sample, but not in the model, are shown in grey.

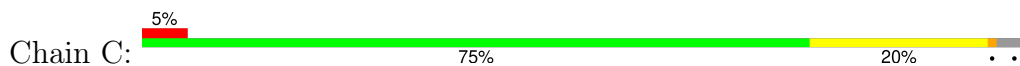
- Molecule 1: Isochorismate synthase/isochorismate-pyruvate lyase mbtI



- Molecule 1: Isochorismate synthase/isochorismate-pyruvate lyase mbtI

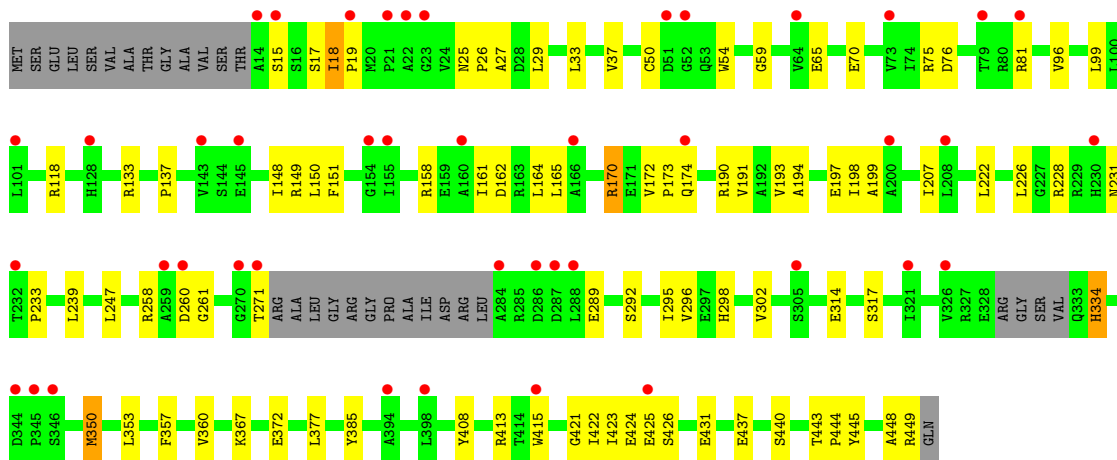
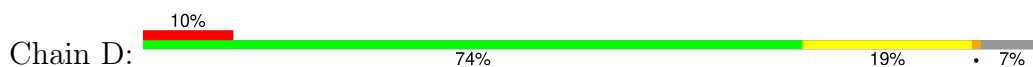


- Molecule 1: Isochorismate synthase/isochorismate-pyruvate lyase mbtI





● Molecule 1: Isochorismate synthase/isochorismate-pyruvate lyase mbtI



4 Data and refinement statistics i

Property	Value	Source
Space group	P 1 21 1	Depositor
Cell constants a, b, c, α , β , γ	87.15Å 115.94Å 95.85Å 90.00° 91.44° 90.00°	Depositor
Resolution (Å)	19.73 – 2.29 19.64 – 2.29	Depositor EDS
% Data completeness (in resolution range)	(Not available) (19.73-2.29) 99.1 (19.64-2.29)	Depositor EDS
R_{merge}	(Not available)	Depositor
R_{sym}	(Not available)	Depositor
$\langle I/\sigma(I) \rangle$ ¹	1.58 (at 2.30Å)	Xtrriage
Refinement program	BUSTER 2.8.0	Depositor
R, R_{free}	0.199 , 0.231 0.212 , 0.227	Depositor DCC
R_{free} test set	4239 reflections (5.01%)	wwPDB-VP
Wilson B-factor (Å ²)	37.7	Xtrriage
Anisotropy	0.063	Xtrriage
Bulk solvent k_{sol} (e/Å ³), B_{sol} (Å ²)	0.31 , 57.3	EDS
L-test for twinning ²	$\langle L \rangle = 0.53$, $\langle L^2 \rangle = 0.38$	Xtrriage
Estimated twinning fraction	0.012 for h,-k,-l	Xtrriage
F_o, F_c correlation	0.95	EDS
Total number of atoms	13158	wwPDB-VP
Average B, all atoms (Å ²)	42.0	wwPDB-VP

Xtrriage's analysis on translational NCS is as follows: *The largest off-origin peak in the Patterson function is 3.73% of the height of the origin peak. No significant pseudotranslation is detected.*

¹Intensities estimated from amplitudes.

²Theoretical values of $\langle |L| \rangle$, $\langle L^2 \rangle$ for acentric reflections are 0.5, 0.333 respectively for untwinned datasets, and 0.375, 0.2 for perfectly twinned datasets.

5 Model quality [i](#)

5.1 Standard geometry [i](#)

Bond lengths and bond angles in the following residue types are not validated in this section: RVC, VCE

The Z score for a bond length (or angle) is the number of standard deviations the observed value is removed from the expected value. A bond length (or angle) with $|Z| > 5$ is considered an outlier worth inspection. RMSZ is the root-mean-square of all Z scores of the bond lengths (or angles).

Mol	Chain	Bond lengths		Bond angles	
		RMSZ	# Z >5	RMSZ	# Z >5
1	A	1.50	5/3198 (0.2%)	0.79	1/4350 (0.0%)
1	B	1.51	8/3287 (0.2%)	0.79	1/4472 (0.0%)
1	C	1.54	7/3298 (0.2%)	0.80	1/4483 (0.0%)
1	D	1.37	6/3185 (0.2%)	0.76	0/4335
All	All	1.48	26/12968 (0.2%)	0.79	3/17640 (0.0%)

Chiral center outliers are detected by calculating the chiral volume of a chiral center and verifying if the center is modelled as a planar moiety or with the opposite hand. A planarity outlier is detected by checking planarity of atoms in a peptide group, atoms in a mainchain group or atoms of a sidechain that are expected to be planar.

Mol	Chain	#Chirality outliers	#Planarity outliers
1	A	0	1

All (26) bond length outliers are listed below:

Mol	Chain	Res	Type	Atoms	Z	Observed(Å)	Ideal(Å)
1	B	408	TYR	CD1-CE1	-6.34	1.29	1.39
1	C	436	CYS	CB-SG	-6.11	1.71	1.82
1	C	50	CYS	CB-SG	-6.05	1.72	1.82
1	D	50	CYS	CB-SG	-5.87	1.72	1.81
1	C	408	TYR	CD1-CE1	-5.84	1.30	1.39
1	B	50	CYS	CB-SG	-5.73	1.72	1.81
1	B	408	TYR	CD2-CE2	-5.63	1.30	1.39
1	A	211	CYS	CB-SG	-5.61	1.72	1.81
1	A	408	TYR	CD1-CE1	-5.58	1.30	1.39
1	B	385	TYR	CD2-CE2	-5.57	1.30	1.39
1	D	408	TYR	CD1-CE1	-5.57	1.31	1.39
1	C	249	TYR	CD2-CE2	-5.52	1.31	1.39
1	A	50	CYS	CB-SG	-5.50	1.72	1.81
1	A	224	TYR	CD1-CE1	-5.46	1.31	1.39

Continued on next page...

Continued from previous page...

Mol	Chain	Res	Type	Atoms	Z	Observed(Å)	Ideal(Å)
1	B	49	GLU	CD-OE2	-5.43	1.19	1.25
1	C	45	TYR	CD2-CE2	-5.40	1.31	1.39
1	D	385	TYR	CD2-CE2	-5.38	1.31	1.39
1	D	372	GLU	CD-OE2	-5.25	1.19	1.25
1	C	224	TYR	CD1-CE1	-5.19	1.31	1.39
1	B	45	TYR	CD2-CE2	-5.19	1.31	1.39
1	D	408	TYR	CD2-CE2	-5.18	1.31	1.39
1	C	249	TYR	CD1-CE1	-5.18	1.31	1.39
1	B	380	CYS	CB-SG	-5.16	1.73	1.81
1	A	113	GLU	CD-OE2	-5.11	1.20	1.25
1	D	385	TYR	CD1-CE1	-5.08	1.31	1.39
1	B	113	GLU	CD-OE2	-5.05	1.20	1.25

All (3) bond angle outliers are listed below:

Mol	Chain	Res	Type	Atoms	Z	Observed(°)	Ideal(°)
1	C	395	ASP	CB-CG-OD1	5.55	123.30	118.30
1	A	395	ASP	CB-CG-OD1	5.42	123.18	118.30
1	B	189	ARG	NE-CZ-NH1	-5.07	117.76	120.30

There are no chirality outliers.

All (1) planarity outliers are listed below:

Mol	Chain	Res	Type	Group
1	A	80[A]	ARG	Mainchain

5.2 Too-close contacts [i](#)

In the following table, the Non-H and H(model) columns list the number of non-hydrogen atoms and hydrogen atoms in the chain respectively. The H(added) column lists the number of hydrogen atoms added and optimized by MolProbity. The Clashes column lists the number of clashes within the asymmetric unit, whereas Symm-Clashes lists symmetry-related clashes.

Mol	Chain	Non-H	H(model)	H(added)	Clashes	Symm-Clashes
1	A	3143	0	3087	66	0
1	B	3231	0	3174	49	0
1	C	3241	0	3210	75	0
1	D	3130	0	3061	75	0
2	A	19	0	9	1	0
2	B	19	0	9	0	0
2	C	19	0	9	2	0

Continued on next page...

Continued from previous page...

Mol	Chain	Non-H	H(model)	H(added)	Clashes	Symm-Clashes
2	D	19	0	9	0	0
3	C	19	0	9	1	0
4	A	70	0	0	0	0
4	B	89	0	0	2	0
4	C	109	0	0	2	0
4	D	50	0	0	3	0
All	All	13158	0	12577	264	0

The all-atom clashscore is defined as the number of clashes found per 1000 atoms (including hydrogen atoms). The all-atom clashscore for this structure is 10.

All (264) close contacts within the same asymmetric unit are listed below, sorted by their clash magnitude.

Atom-1	Atom-2	Interatomic distance (Å)	Clash overlap (Å)
1:A:80[B]:ARG:HH11	1:A:80[B]:ARG:HG2	1.00	1.09
1:D:271:THR:H	1:D:334:HIS:HB3	1.17	1.02
1:D:174:GLN:HG3	4:D:501:HOH:O	1.59	1.01
1:A:80[B]:ARG:HH11	1:A:80[B]:ARG:CG	1.72	1.00
1:A:80[B]:ARG:HG2	1:A:80[B]:ARG:NH1	1.66	0.93
1:A:20:MET:CE	1:A:148:ILE:HG13	1.99	0.92
1:D:18:ILE:HD12	1:D:19:PRO:O	1.68	0.91
1:A:303:ARG:O	1:A:307:GLU:HG3	1.71	0.89
1:D:158:ARG:O	1:D:161:ILE:HG22	1.74	0.85
1:C:283:LEU:HD22	1:C:286:ASP:OD2	1.77	0.84
1:B:292:SER:O	1:B:296:VAL:HG23	1.76	0.84
1:C:448:ALA:O	1:C:449:ARG:HB2	1.76	0.84
1:D:118:ARG:HH21	1:D:118:ARG:HG3	1.41	0.84
1:D:170:ARG:HD2	1:D:222:LEU:HD21	1.58	0.84
1:D:431:GLU:OE2	1:D:431:GLU:HA	1.79	0.82
1:A:164:LEU:HD13	1:A:164:LEU:O	1.79	0.81
1:A:20:MET:HE1	1:A:148:ILE:CG1	2.10	0.81
1:D:33:LEU:HD22	1:D:164:LEU:HD23	1.61	0.81
1:C:20:MET:CE	1:C:148:ILE:HG13	2.12	0.80
1:B:231:ASN:OD1	1:B:441:THR:HG23	1.82	0.80
1:A:156:ARG:H	1:A:156:ARG:HD3	1.47	0.79
1:D:33:LEU:HD22	1:D:164:LEU:CD2	2.13	0.79
1:A:291:ASN:HD22	1:A:294:GLU:HG2	1.49	0.76
1:D:33:LEU:CD2	1:D:164:LEU:HD23	2.16	0.76
1:A:20:MET:HE1	1:A:148:ILE:HG13	1.65	0.75
1:A:231:ASN:OD1	1:A:441:THR:HG23	1.86	0.75
1:B:288:LEU:HD13	1:B:289:GLU:H	1.51	0.75

Continued on next page...

Continued from previous page...

Atom-1	Atom-2	Interatomic distance (Å)	Clash overlap (Å)
1:D:33:LEU:O	1:D:37:VAL:HG23	1.87	0.75
1:C:279:ALA:O	1:C:282:ARG:HB2	1.87	0.74
1:D:33:LEU:HD12	1:D:37:VAL:HG21	1.69	0.74
1:A:20:MET:CE	1:A:148:ILE:CG1	2.64	0.73
1:D:18:ILE:HD11	1:D:148:ILE:HD12	1.69	0.73
1:A:291:ASN:ND2	1:A:294:GLU:HG2	2.04	0.72
1:A:156:ARG:HD3	1:A:156:ARG:N	2.05	0.71
1:C:205:LYS:HG3	1:C:423:ILE:HG22	1.71	0.70
1:D:25:ASN:OD1	1:D:26:PRO:HD2	1.90	0.70
1:A:20:MET:HE2	1:A:148:ILE:CD1	2.22	0.70
1:D:161:ILE:HG23	1:D:162:ASP:N	2.06	0.70
1:B:229:ARG:HH21	1:C:171:GLU:HG3	1.55	0.70
1:D:448:ALA:O	1:D:449:ARG:HB2	1.92	0.69
1:B:288:LEU:HD13	1:B:289:GLU:N	2.06	0.69
1:B:285:ARG:O	1:B:288:LEU:CD1	2.40	0.69
1:D:18:ILE:CD1	1:D:19:PRO:O	2.41	0.69
1:C:157:HIS:O	1:C:161:ILE:HG13	1.92	0.68
1:D:170:ARG:HH11	1:D:222:LEU:HD21	1.57	0.68
1:B:19:PRO:O	1:B:21:PRO:HD3	1.94	0.67
1:A:164:LEU:CD1	1:A:164:LEU:C	2.63	0.67
1:A:20:MET:CE	1:A:148:ILE:HD11	2.26	0.65
1:A:305:SER:HB2	1:A:339:ILE:HD12	1.78	0.65
1:B:274:LEU:CB	1:B:330:GLY:O	2.44	0.65
1:A:20:MET:HE2	1:A:148:ILE:HD11	1.79	0.65
1:D:258:ARG:NH1	1:D:260:ASP:OD2	2.29	0.65
1:D:174:GLN:CG	4:D:501:HOH:O	2.32	0.65
1:C:197:GLU:HB3	1:C:202:ARG:HD3	1.79	0.64
1:A:20:MET:CE	1:A:148:ILE:CD1	2.75	0.64
1:D:413:ARG:HD3	1:D:415:TRP:CE3	2.33	0.64
1:D:437:GLU:O	1:D:440:SER:HB2	1.98	0.64
1:A:156:ARG:H	1:A:156:ARG:CD	2.03	0.63
1:D:425:GLU:OE1	1:D:425:GLU:N	2.30	0.63
1:C:281:ASP:O	1:C:283:LEU:N	2.28	0.63
1:A:164:LEU:HD13	1:A:164:LEU:C	2.19	0.62
1:C:20:MET:HE1	1:C:148:ILE:HG13	1.82	0.62
1:C:231:ASN:OD1	1:C:441:THR:HG23	2.00	0.62
1:A:305:SER:HB2	1:A:339:ILE:CD1	2.28	0.62
1:C:298:HIS:HE2	1:C:337:SER:HG	1.44	0.62
1:D:260:ASP:OD1	1:D:260:ASP:C	2.37	0.61
1:B:285:ARG:O	1:B:288:LEU:HD13	2.01	0.61
1:C:283:LEU:C	1:C:285:ARG:H	2.03	0.61

Continued on next page...

Continued from previous page...

Atom-1	Atom-2	Interatomic distance (Å)	Clash overlap (Å)
1:A:270:GLY:HA2	1:A:334:HIS:CE1	2.35	0.60
1:C:260:ASP:OD1	1:C:260:ASP:C	2.39	0.60
1:D:75:ARG:O	1:D:76:ASP:HB2	2.01	0.60
1:A:161:ILE:HG22	1:A:165:LEU:HD12	1.84	0.60
1:C:20:MET:HE2	1:C:148:ILE:HG13	1.83	0.59
1:A:155:ILE:HG22	1:A:159:GLU:OE2	2.02	0.59
1:D:423:ILE:O	1:D:426:SER:HB2	2.02	0.59
1:C:20:MET:HE1	1:C:148:ILE:CG1	2.32	0.59
1:C:344:ASP:CG	1:C:345:PRO:HD2	2.23	0.58
1:A:190:ARG:HD2	1:A:377:LEU:O	2.04	0.58
1:C:33:LEU:HD12	1:C:33:LEU:O	2.03	0.58
1:D:194:ALA:O	1:D:198:ILE:HG13	2.04	0.58
1:D:161:ILE:CG2	1:D:162:ASP:N	2.67	0.58
1:D:271:THR:N	1:D:334:HIS:HB3	2.03	0.58
1:D:350:MET:CE	1:D:353:LEU:HD23	2.33	0.57
1:C:278:PRO:O	1:C:279:ALA:HB3	2.02	0.57
1:A:75:ARG:O	1:A:76:ASP:HB2	2.05	0.57
1:C:245:ARG:NH1	1:C:409:GLN:OE1	2.36	0.57
1:B:305:SER:HB3	1:B:339:ILE:HD13	1.86	0.56
1:A:207:ILE:HG13	1:A:421:GLY:HA2	1.88	0.56
1:C:182:ASP:OD2	1:C:184:PRO:HG3	2.05	0.55
1:C:440:SER:HA	1:C:443:THR:OG1	2.07	0.55
1:D:33:LEU:CD1	1:D:37:VAL:HG21	2.37	0.55
1:C:292:SER:HB3	1:C:293:LYS:HZ2	1.71	0.55
1:B:119:TYR:OH	1:B:367:LYS:HD2	2.07	0.55
1:B:176:ARG:NH2	4:B:473:HOH:O	2.34	0.55
1:B:306:LEU:O	1:B:309:ILE:HG22	2.06	0.55
1:D:207:ILE:HG13	1:D:421:GLY:HA2	1.89	0.55
1:D:360:VAL:HG23	1:D:367:LYS:HE2	1.88	0.55
1:C:205:LYS:HG3	1:C:423:ILE:CG2	2.37	0.55
1:B:303:ARG:O	1:B:307:GLU:HG3	2.07	0.55
1:D:158:ARG:HA	1:D:161:ILE:HG22	1.88	0.55
1:D:353:LEU:O	1:D:357:PHE:HB2	2.07	0.54
1:D:59:GLY:O	1:D:137:PRO:HA	2.08	0.54
1:C:291:ASN:O	1:C:295:ILE:HG13	2.07	0.54
1:B:175:SER:O	1:C:167:THR:O	2.26	0.54
1:A:269:ALA:HB3	1:A:335:LEU:HB2	1.90	0.54
1:D:118:ARG:HG3	1:D:118:ARG:NH2	2.14	0.54
1:D:193:VAL:O	1:D:197:GLU:HG3	2.08	0.54
1:C:283:LEU:C	1:C:285:ARG:N	2.61	0.53
1:D:25:ASN:OD1	1:D:26:PRO:CD	2.54	0.53

Continued on next page...

Continued from previous page...

Atom-1	Atom-2	Interatomic distance (Å)	Clash overlap (Å)
1:C:187:PHE:O	1:C:191:VAL:HG23	2.09	0.52
1:B:187:PHE:O	1:B:191:VAL:HG23	2.10	0.52
1:A:176:ARG:HG2	1:A:216:PHE:CZ	2.45	0.52
1:C:109:TRP:CD2	1:C:384:LEU:HD11	2.45	0.52
1:D:15:SER:HB3	1:D:151:PHE:CE1	2.45	0.52
1:A:265:THR:HG22	1:A:339:ILE:HB	1.90	0.52
1:C:235:ARG:HG3	1:C:401:ALA:HB2	1.92	0.51
1:C:59:GLY:O	1:C:137:PRO:HA	2.10	0.51
1:D:70:GLU:OE1	1:D:81:ARG:NH1	2.43	0.51
1:B:141:ILE:HD11	1:B:161:ILE:HD11	1.92	0.51
1:C:302:VAL:HG13	1:C:339:ILE:HD11	1.91	0.51
1:D:27:ALA:HB2	1:D:54:TRP:CZ2	2.45	0.51
1:C:269:ALA:O	1:C:335:LEU:HB2	2.10	0.51
1:D:149:ARG:C	1:D:150:LEU:HD23	2.31	0.51
1:D:18:ILE:O	1:D:18:ILE:HG13	2.10	0.51
1:D:199:ALA:HA	1:D:424:GLU:OE2	2.11	0.51
1:A:305:SER:CB	1:A:339:ILE:HD12	2.41	0.51
1:A:353:LEU:O	1:A:357:PHE:HB2	2.10	0.51
1:A:340:ARG:HG2	1:A:341:ALA:N	2.26	0.51
1:D:174:GLN:NE2	4:D:501:HOH:O	2.34	0.51
1:A:323:PHE:CZ	1:A:324:MET:HG3	2.46	0.50
1:B:275:GLY:O	1:B:276:ARG:CB	2.60	0.50
1:C:353:LEU:O	1:C:357:PHE:HB2	2.12	0.50
1:C:367:LYS:O	1:C:371:VAL:HG23	2.11	0.50
1:A:142:MET:HG3	1:A:151:PHE:HE2	1.77	0.50
1:B:264:ILE:CD1	1:B:340:ARG:HG3	2.42	0.50
1:D:226:LEU:HG	1:D:445:TYR:HB3	1.93	0.50
1:A:223:THR:HG23	1:A:445:TYR:O	2.13	0.49
1:A:440:SER:HA	1:A:443:THR:OG1	2.12	0.49
1:A:141:ILE:HD11	1:A:161:ILE:HD11	1.93	0.49
1:A:434:GLU:HG2	1:A:438:LYS:HE3	1.94	0.49
1:C:214:VAL:HB	1:C:414:THR:HG22	1.94	0.49
1:B:284:ALA:O	1:B:288:LEU:HD12	2.13	0.49
1:B:32:GLU:HG3	1:B:169:VAL:HB	1.94	0.49
1:C:109:TRP:CE2	1:C:384:LEU:HD11	2.48	0.48
1:B:204:HIS:HB3	1:B:365:ILE:HG22	1.94	0.48
1:C:291:ASN:OD1	1:C:294:GLU:HG2	2.13	0.48
1:C:404:LEU:HD13	2:C:451[A]:RVC:C1	2.43	0.48
1:D:96:VAL:O	1:D:99:LEU:HB2	2.13	0.48
1:D:413:ARG:HD3	1:D:415:TRP:CZ3	2.47	0.48
1:D:334:HIS:N	1:D:334:HIS:CD2	2.81	0.48

Continued on next page...

Continued from previous page...

Atom-1	Atom-2	Interatomic distance (Å)	Clash overlap (Å)
1:D:289:GLU:O	1:D:295:ILE:HD11	2.14	0.48
1:A:298:HIS:CD2	1:A:324:MET:HG2	2.48	0.48
1:B:38:THR:OG1	4:B:503:HOH:O	2.20	0.48
1:B:304:SER:O	1:B:308:GLU:HG3	2.14	0.48
1:B:332:VAL:HG13	1:B:333:GLN:N	2.29	0.48
1:C:344:ASP:OD1	1:C:346:SER:OG	2.30	0.48
1:A:20:MET:HE2	1:A:20:MET:HA	1.95	0.47
1:D:190:ARG:HD2	1:D:377:LEU:O	2.14	0.47
1:A:164:LEU:O	1:A:164:LEU:CD1	2.56	0.47
1:B:272:ARG:O	1:B:333:GLN:N	2.38	0.47
1:C:409:GLN:NE2	4:C:503:HOH:O	2.22	0.47
1:B:288:LEU:C	1:B:288:LEU:HD22	2.35	0.47
1:D:239:LEU:O	1:D:239:LEU:HD12	2.14	0.47
1:D:292:SER:O	1:D:296:VAL:HG23	2.15	0.47
1:D:425:GLU:N	1:D:425:GLU:CD	2.68	0.47
1:D:443:THR:N	1:D:444:PRO:CD	2.77	0.47
1:A:43:GLU:HB2	1:A:59:GLY:HA2	1.97	0.47
1:B:288:LEU:HD23	1:B:335:LEU:HG	1.96	0.47
1:C:258:ARG:NH2	1:C:260:ASP:OD2	2.47	0.47
1:D:18:ILE:HD12	1:D:19:PRO:N	2.29	0.47
1:A:325:THR:CG2	1:A:326:VAL:N	2.77	0.47
1:C:281:ASP:C	1:C:283:LEU:N	2.68	0.47
1:C:344:ASP:OD1	1:C:345:PRO:HD2	2.15	0.47
1:C:20:MET:CE	1:C:148:ILE:CG1	2.85	0.47
1:D:298:HIS:O	1:D:302:VAL:HG23	2.15	0.47
1:A:296:VAL:O	1:A:300:ILE:HG13	2.15	0.46
1:A:344:ASP:OD1	1:A:345:PRO:HD2	2.14	0.46
1:D:165:LEU:HD23	1:D:165:LEU:HA	1.57	0.46
2:A:451:RVC:OB	2:A:451:RVC:O2	2.29	0.46
1:B:431:GLU:OE2	1:B:431:GLU:HA	2.16	0.46
1:C:269:ALA:HB3	1:C:298:HIS:HB2	1.97	0.46
1:C:278:PRO:HA	1:C:282:ARG:CG	2.44	0.46
1:A:193:VAL:O	1:A:197:GLU:HG3	2.16	0.46
1:B:353:LEU:O	1:B:357:PHE:HB2	2.15	0.46
1:C:309:ILE:CG2	1:C:310:THR:N	2.78	0.46
1:B:344:ASP:HA	1:B:345:PRO:HD3	1.82	0.46
1:D:18:ILE:HD12	1:D:18:ILE:C	2.37	0.46
1:D:260:ASP:OD1	1:D:261:GLY:N	2.49	0.46
1:D:65:GLU:HG2	1:D:133:ARG:HD2	1.97	0.46
1:A:182:ASP:HB3	1:A:184:PRO:HD3	1.98	0.45
1:C:404:LEU:HD13	3:C:1451[B]:VCE:C1	2.46	0.45

Continued on next page...

Continued from previous page...

Atom-1	Atom-2	Interatomic distance (Å)	Clash overlap (Å)
1:B:182:ASP:HB3	1:B:184:PRO:HD3	1.98	0.45
1:A:298:HIS:O	1:A:302:VAL:HG23	2.16	0.45
1:A:325:THR:HG22	1:A:326:VAL:N	2.30	0.45
1:C:278:PRO:O	1:C:279:ALA:CB	2.64	0.45
1:C:293:LYS:NZ	4:C:553:HOH:O	2.46	0.45
1:D:239:LEU:HD12	1:D:239:LEU:C	2.38	0.45
1:C:277:GLY:HA2	1:C:278:PRO:HD3	1.76	0.45
1:B:20:MET:HE1	1:B:148:ILE:CG1	2.46	0.44
1:C:260:ASP:OD1	1:C:261:GLY:N	2.50	0.44
1:D:247:LEU:C	1:D:247:LEU:HD12	2.38	0.44
1:B:288:LEU:CD2	1:B:335:LEU:HG	2.48	0.44
1:B:19:PRO:O	1:B:21:PRO:CD	2.65	0.44
1:B:291:ASN:O	1:B:295:ILE:HG13	2.18	0.44
1:A:156:ARG:HH11	1:A:157:HIS:CE1	2.35	0.44
1:C:66:LEU:HD13	1:C:71:LEU:HD23	1.98	0.44
1:A:269:ALA:HB3	1:A:335:LEU:CB	2.48	0.44
1:C:27:ALA:HB2	1:C:54:TRP:CZ2	2.52	0.44
1:C:100:LEU:HD12	1:C:349:ARG:NH2	2.33	0.44
1:C:298:HIS:O	1:C:302:VAL:HG23	2.17	0.44
1:D:158:ARG:O	1:D:161:ILE:CG2	2.58	0.44
1:D:314:GLU:O	1:D:317:SER:OG	2.29	0.44
1:C:100:LEU:CD1	1:C:349:ARG:HH22	2.31	0.43
1:D:158:ARG:C	1:D:161:ILE:HG22	2.36	0.43
1:A:443:THR:N	1:A:444:PRO:CD	2.81	0.43
1:D:118:ARG:NH2	1:D:118:ARG:CG	2.75	0.43
1:B:72:ARG:HA	1:B:80:ARG:O	2.19	0.43
1:B:141:ILE:CD1	1:B:161:ILE:HD11	2.48	0.43
1:C:190:ARG:HD2	1:C:377:LEU:O	2.19	0.43
1:A:176:ARG:HG2	1:A:216:PHE:CE2	2.53	0.43
1:C:291:ASN:HD21	1:C:293:LYS:HD2	1.83	0.43
1:A:296:VAL:HG13	1:A:297:GLU:N	2.34	0.43
1:D:425:GLU:CD	1:D:425:GLU:H	2.18	0.43
1:A:20:MET:HE1	1:A:148:ILE:CD1	2.45	0.43
1:A:344:ASP:CG	1:A:345:PRO:HD2	2.39	0.43
1:C:100:LEU:HD12	1:C:349:ARG:HH22	1.84	0.43
1:B:264:ILE:HD11	1:B:340:ARG:HG3	2.01	0.43
1:B:298:HIS:O	1:B:302:VAL:HG23	2.18	0.43
1:C:207:ILE:HG13	1:C:421:GLY:HA2	2.01	0.43
1:C:285:ARG:O	1:C:289:GLU:HG3	2.18	0.43
1:A:298:HIS:HD2	1:A:324:MET:HG2	1.83	0.43
1:B:20:MET:HA	1:B:21:PRO:HD2	1.71	0.43

Continued on next page...

Continued from previous page...

Atom-1	Atom-2	Interatomic distance (Å)	Clash overlap (Å)
1:A:59:GLY:O	1:A:137:PRO:HA	2.18	0.42
1:B:257:VAL:HG22	1:B:263:VAL:HG13	2.00	0.42
1:A:382:ARG:HD3	1:A:386:SER:OG	2.19	0.42
1:D:29:LEU:O	1:D:33:LEU:HD23	2.19	0.42
1:C:266:GLU:OE1	1:C:327:ARG:NH1	2.51	0.42
1:B:20:MET:HE3	1:B:144:SER:O	2.19	0.42
1:C:183:ASP:N	1:C:184:PRO:HD3	2.33	0.42
1:B:288:LEU:CD1	1:B:288:LEU:N	2.82	0.42
1:B:423:ILE:O	1:B:426:SER:HB2	2.19	0.42
1:C:109:TRP:HZ3	1:C:111:ALA:HB2	1.85	0.42
1:A:360:VAL:HG23	1:A:367:LYS:HE2	2.02	0.42
1:B:298:HIS:CD2	1:B:324:MET:HG3	2.55	0.42
1:B:264:ILE:HD13	1:B:340:ARG:HG3	2.02	0.41
1:A:203:TYR:CE1	1:A:206:VAL:HG13	2.54	0.41
1:D:33:LEU:O	1:D:37:VAL:CG2	2.64	0.41
1:D:228:ARG:NH1	1:D:231:ASN:O	2.54	0.41
1:C:165:LEU:HD23	1:C:165:LEU:HA	1.91	0.41
1:C:360:VAL:HG23	1:C:367:LYS:HE3	2.01	0.41
1:B:300:ILE:HD13	1:B:300:ILE:HG21	1.84	0.41
1:A:293:LYS:O	1:A:296:VAL:HG12	2.21	0.41
1:C:136:SER:HA	1:C:137:PRO:HD3	1.96	0.41
1:C:360:VAL:CG2	1:C:367:LYS:HE3	2.51	0.41
1:C:404:LEU:HD13	2:C:451[A]:RVC:C2	2.51	0.41
1:D:17:SER:C	1:D:18:ILE:CG2	2.89	0.41
1:A:161:ILE:HG22	1:A:165:LEU:CD1	2.50	0.41
1:B:298:HIS:HD2	1:B:324:MET:HG3	1.86	0.41
1:C:32:GLU:O	1:C:36:VAL:HG23	2.21	0.41
1:C:293:LYS:NZ	1:C:293:LYS:H	2.18	0.41
1:C:283:LEU:HD23	1:C:283:LEU:HA	1.90	0.40
1:C:443:THR:N	1:C:444:PRO:CD	2.84	0.40
1:D:172:VAL:HA	1:D:173:PRO:HD3	1.91	0.40
1:D:191:VAL:HG13	1:D:422:ILE:HG12	2.04	0.40

There are no symmetry-related clashes.

5.3 Torsion angles [i](#)

5.3.1 Protein backbone [i](#)

In the following table, the Percentiles column shows the percent Ramachandran outliers of the chain as a percentile score with respect to all X-ray entries followed by that with respect to entries

of similar resolution.

The Analysed column shows the number of residues for which the backbone conformation was analysed, and the total number of residues.

Mol	Chain	Analysed	Favoured	Allowed	Outliers	Percentiles	
1	A	413/450 (92%)	410 (99%)	3 (1%)	0	100	100
1	B	428/450 (95%)	421 (98%)	5 (1%)	2 (0%)	29	35
1	C	426/450 (95%)	418 (98%)	6 (1%)	2 (0%)	29	35
1	D	414/450 (92%)	408 (99%)	5 (1%)	1 (0%)	47	58
All	All	1681/1800 (93%)	1657 (99%)	19 (1%)	5 (0%)	41	50

All (5) Ramachandran outliers are listed below:

Mol	Chain	Res	Type
1	B	276	ARG
1	C	282	ARG
1	B	330	GLY
1	C	279	ALA
1	D	233	PRO

5.3.2 Protein sidechains [i](#)

In the following table, the Percentiles column shows the percent sidechain outliers of the chain as a percentile score with respect to all X-ray entries followed by that with respect to entries of similar resolution.

The Analysed column shows the number of residues for which the sidechain conformation was analysed, and the total number of residues.

Mol	Chain	Analysed	Rotameric	Outliers	Percentiles	
1	A	318/358 (89%)	314 (99%)	4 (1%)	69	82
1	B	326/358 (91%)	324 (99%)	2 (1%)	86	94
1	C	332/358 (93%)	328 (99%)	4 (1%)	71	84
1	D	314/358 (88%)	310 (99%)	4 (1%)	69	82
All	All	1290/1432 (90%)	1276 (99%)	14 (1%)	73	86

All (14) residues with a non-rotameric sidechain are listed below:

Mol	Chain	Res	Type
1	A	156	ARG

Continued on next page...

Continued from previous page...

Mol	Chain	Res	Type
1	A	164	LEU
1	A	378	ASP
1	A	430	ARG
1	B	288	LEU
1	B	378	ASP
1	C	33	LEU
1	C	268	LEU
1	C	293	LYS
1	C	378	ASP
1	D	18	ILE
1	D	170	ARG
1	D	334	HIS
1	D	350	MET

Sometimes sidechains can be flipped to improve hydrogen bonding and reduce clashes. All (1) such sidechains are listed below:

Mol	Chain	Res	Type
1	A	291	ASN

5.3.3 RNA [i](#)

There are no RNA molecules in this entry.

5.4 Non-standard residues in protein, DNA, RNA chains [i](#)

There are no non-standard protein/DNA/RNA residues in this entry.

5.5 Carbohydrates [i](#)

There are no monosaccharides in this entry.

5.6 Ligand geometry [i](#)

5 ligands are modelled in this entry.

In the following table, the Counts columns list the number of bonds (or angles) for which Mogul statistics could be retrieved, the number of bonds (or angles) that are observed in the model and the number of bonds (or angles) that are defined in the Chemical Component Dictionary. The Link column lists molecule types, if any, to which the group is linked. The Z score for a bond

length (or angle) is the number of standard deviations the observed value is removed from the expected value. A bond length (or angle) with $|Z| > 2$ is considered an outlier worth inspection. RMSZ is the root-mean-square of all Z scores of the bond lengths (or angles).

Mol	Type	Chain	Res	Link	Bond lengths			Bond angles		
					Counts	RMSZ	# Z > 2	Counts	RMSZ	# Z > 2
3	VCE	C	1451[B]	-	20,20,20	3.26	13 (65%)	25,28,28	2.73	9 (36%)
2	RVC	C	451[A]	-	20,20,20	2.59	11 (55%)	25,28,28	2.47	11 (44%)
2	RVC	D	451	-	20,20,20	2.34	8 (40%)	25,28,28	1.68	6 (24%)
2	RVC	A	451	-	20,20,20	2.98	12 (60%)	25,28,28	2.58	11 (44%)
2	RVC	B	451	-	20,20,20	2.65	9 (45%)	25,28,28	2.15	10 (40%)

In the following table, the Chirals column lists the number of chiral outliers, the number of chiral centers analysed, the number of these observed in the model and the number defined in the Chemical Component Dictionary. Similar counts are reported in the Torsion and Rings columns. '-' means no outliers of that kind were identified.

Mol	Type	Chain	Res	Link	Chirals	Torsions	Rings
3	VCE	C	1451[B]	-	-	5/16/18/18	0/2/2/2
2	RVC	C	451[A]	-	-	3/16/18/18	0/2/2/2
2	RVC	D	451	-	-	3/16/18/18	0/2/2/2
2	RVC	A	451	-	-	4/16/18/18	0/2/2/2
2	RVC	B	451	-	-	4/16/18/18	0/2/2/2

All (53) bond length outliers are listed below:

Mol	Chain	Res	Type	Atoms	Z	Observed(Å)	Ideal(Å)
2	A	451	RVC	C1-C	-6.22	1.36	1.49
2	D	451	RVC	C1-C	-6.10	1.36	1.49
3	C	1451[B]	VCE	C1-C	-5.67	1.37	1.49
3	C	1451[B]	VCE	O3-C3	-5.57	1.30	1.41
3	C	1451[B]	VCE	C7-C'	5.55	1.61	1.48
2	C	451[A]	RVC	C1-C	-5.08	1.38	1.49
2	B	451	RVC	C1-C	-5.03	1.38	1.49
2	A	451	RVC	C10-C9	-4.90	1.45	1.51
2	B	451	RVC	C10-C9	-4.73	1.45	1.51
3	C	1451[B]	VCE	C3-C2	-4.41	1.34	1.40
3	C	1451[B]	VCE	O3-C7	-4.37	1.29	1.38
2	A	451	RVC	O3-C3	-4.12	1.32	1.41
3	C	1451[B]	VCE	C1-C2	-4.09	1.34	1.41
2	B	451	RVC	O3-C3	-3.84	1.33	1.41
2	A	451	RVC	C11-C9	-3.77	1.46	1.51

Continued on next page...

Continued from previous page...

Mol	Chain	Res	Type	Atoms	Z	Observed(Å)	Ideal(Å)
2	D	451	RVC	O3-C3	-3.76	1.33	1.41
2	A	451	RVC	C3-C2	-3.71	1.35	1.40
2	C	451[A]	RVC	OA'-C'	-3.63	1.20	1.30
2	A	451	RVC	C1-C2	-3.62	1.35	1.41
2	C	451[A]	RVC	O3-C3	-3.55	1.34	1.41
2	C	451[A]	RVC	C10-C9	-3.53	1.47	1.51
2	C	451[A]	RVC	C11-C9	-3.48	1.47	1.51
2	D	451	RVC	OB-C	-3.40	1.20	1.30
2	C	451[A]	RVC	O2-C2	-3.39	1.29	1.36
3	C	1451[B]	VCE	OB-C	-3.39	1.20	1.30
2	A	451	RVC	OB-C	-3.37	1.20	1.30
3	C	1451[B]	VCE	O2-C2	-3.37	1.29	1.36
2	C	451[A]	RVC	C7-C'	3.36	1.56	1.48
2	B	451	RVC	C1-C2	-3.29	1.36	1.41
2	A	451	RVC	OA'-C'	-3.27	1.21	1.30
2	B	451	RVC	OA'-C'	-3.26	1.21	1.30
2	B	451	RVC	C11-C9	-3.24	1.47	1.51
3	C	1451[B]	VCE	OA'-C'	-3.21	1.21	1.30
2	C	451[A]	RVC	C1-C2	-3.17	1.36	1.41
2	B	451	RVC	O3-C7	-3.03	1.32	1.38
2	A	451	RVC	O2-C2	-2.99	1.30	1.36
2	B	451	RVC	OB-C	-2.96	1.21	1.30
2	B	451	RVC	O2-C2	-2.90	1.30	1.36
2	A	451	RVC	C6-C1	-2.85	1.35	1.39
2	D	451	RVC	OA'-C'	-2.79	1.23	1.30
2	D	451	RVC	C1-C2	-2.78	1.37	1.41
3	C	1451[B]	VCE	C11-C9	-2.78	1.48	1.51
2	C	451[A]	RVC	OB-C	-2.65	1.22	1.30
2	C	451[A]	RVC	C3-C2	-2.45	1.37	1.40
3	C	1451[B]	VCE	C8-C7	-2.42	1.29	1.33
2	A	451	RVC	O3-C7	-2.35	1.33	1.38
3	C	1451[B]	VCE	C6-C1	-2.32	1.36	1.39
2	C	451[A]	RVC	C6-C1	-2.31	1.36	1.39
2	A	451	RVC	C8-C7	-2.16	1.30	1.33
2	D	451	RVC	O2-C2	-2.16	1.31	1.36
2	D	451	RVC	C10-C9	-2.12	1.48	1.51
3	C	1451[B]	VCE	C10-C9	-2.12	1.48	1.51
2	D	451	RVC	C7-C'	2.01	1.53	1.48

All (47) bond angle outliers are listed below:

Continued on next page...

Continued from previous page...

Mol	Chain	Res	Type	Atoms	Z	Observed(°)	Ideal(°)
3	C	1451[B]	VCE	C10-C9-C8	-6.38	110.04	118.61
2	C	451[A]	RVC	C1-C2-C3	6.21	124.63	119.56
2	A	451	RVC	C1-C2-C3	6.12	124.56	119.56
2	A	451	RVC	C10-C9-C8	-5.92	110.66	118.61
3	C	1451[B]	VCE	C3-O3-C7	-5.82	108.91	118.49
2	C	451[A]	RVC	C10-C9-C8	-5.31	111.47	118.61
3	C	1451[B]	VCE	C1-C2-C3	4.88	123.55	119.56
2	B	451	RVC	C1-C2-C3	4.53	123.26	119.56
3	C	1451[B]	VCE	C11-C9-C8	-4.47	112.61	118.61
2	A	451	RVC	C3-O3-C7	-4.35	111.33	118.49
2	B	451	RVC	C10-C9-C8	-4.23	112.93	118.61
2	D	451	RVC	C3-O3-C7	-3.95	111.99	118.49
3	C	1451[B]	VCE	OA'-C'-OB'	-3.95	114.50	123.90
2	C	451[A]	RVC	C11-C9-C8	-3.93	113.33	118.61
2	B	451	RVC	OA'-C'-C7	3.48	121.95	114.06
2	D	451	RVC	C10-C9-C8	-3.48	113.94	118.61
2	A	451	RVC	C11-C9-C10	3.19	60.60	58.56
2	C	451[A]	RVC	O2-C2-C1	-3.14	115.51	121.11
2	B	451	RVC	O2-C2-C1	-3.14	115.52	121.11
2	A	451	RVC	C10-C11-C9	-3.13	59.23	60.72
3	C	1451[B]	VCE	C6-C1-C2	-3.13	115.73	118.76
2	C	451[A]	RVC	OA'-C'-C7	2.99	120.83	114.06
2	B	451	RVC	C6-C1-C2	-2.97	115.88	118.76
3	C	1451[B]	VCE	OA'-C'-C7	2.89	120.61	114.06
2	A	451	RVC	C11-C9-C8	-2.87	114.75	118.61
2	C	451[A]	RVC	O3-C7-C'	2.83	122.26	114.54
2	B	451	RVC	OA'-C'-OB'	-2.68	117.52	123.90
2	C	451[A]	RVC	OA'-C'-OB'	-2.65	117.58	123.90
2	D	451	RVC	C11-C9-C8	-2.63	115.07	118.61
2	D	451	RVC	OA'-C'-C7	2.57	119.89	114.06
2	D	451	RVC	C2-C1-C	2.51	122.67	119.86
2	C	451[A]	RVC	C6-C1-C2	-2.51	116.33	118.76
2	A	451	RVC	C6-C5-C4	2.49	123.44	120.24
2	B	451	RVC	OB-C-OA	-2.43	118.12	123.35
3	C	1451[B]	VCE	O3-C3-C4	2.41	124.70	118.89
2	A	451	RVC	O2-C2-C1	-2.41	116.81	121.11
2	A	451	RVC	OB-C-OA	-2.39	118.22	123.35
2	C	451[A]	RVC	OB-C-C1	2.38	122.05	115.28
2	A	451	RVC	C4-C3-C2	-2.37	117.79	119.98
2	C	451[A]	RVC	OB-C-OA	-2.35	118.31	123.35
2	B	451	RVC	C2-C1-C	2.29	122.42	119.86

Continued on next page...

Continued from previous page...

Mol	Chain	Res	Type	Atoms	Z	Observed(°)	Ideal(°)
2	B	451	RVC	C3-O3-C7	-2.29	114.72	118.49
2	A	451	RVC	O3-C3-C4	2.25	124.32	118.89
3	C	1451[B]	VCE	C6-C1-C	2.17	123.62	118.64
2	B	451	RVC	OB-C-C1	2.16	121.41	115.28
2	D	451	RVC	C1-C2-C3	2.14	121.31	119.56
2	C	451[A]	RVC	O3-C3-C4	2.04	123.81	118.89

There are no chirality outliers.

All (19) torsion outliers are listed below:

Mol	Chain	Res	Type	Atoms
2	A	451	RVC	OA'-C'-C7-O3
2	D	451	RVC	C'-C7-C8-C9
3	C	1451[B]	VCE	C'-C7-C8-C9
3	C	1451[B]	VCE	C7-C8-C9-C11
2	A	451	RVC	OB'-C'-C7-C8
2	B	451	RVC	OB'-C'-C7-C8
2	B	451	RVC	OA'-C'-C7-C8
2	C	451[A]	RVC	OB'-C'-C7-C8
2	C	451[A]	RVC	OA'-C'-C7-C8
3	C	1451[B]	VCE	OB'-C'-C7-C8
3	C	1451[B]	VCE	C7-C8-C9-C10
2	B	451	RVC	C'-C7-C8-C9
2	C	451[A]	RVC	OA'-C'-C7-O3
2	A	451	RVC	OA'-C'-C7-C8
2	D	451	RVC	OB'-C'-C7-C8
2	D	451	RVC	OA'-C'-C7-C8
3	C	1451[B]	VCE	OA'-C'-C7-C8
2	A	451	RVC	OB'-C'-C7-O3
2	B	451	RVC	C8-C7-O3-C3

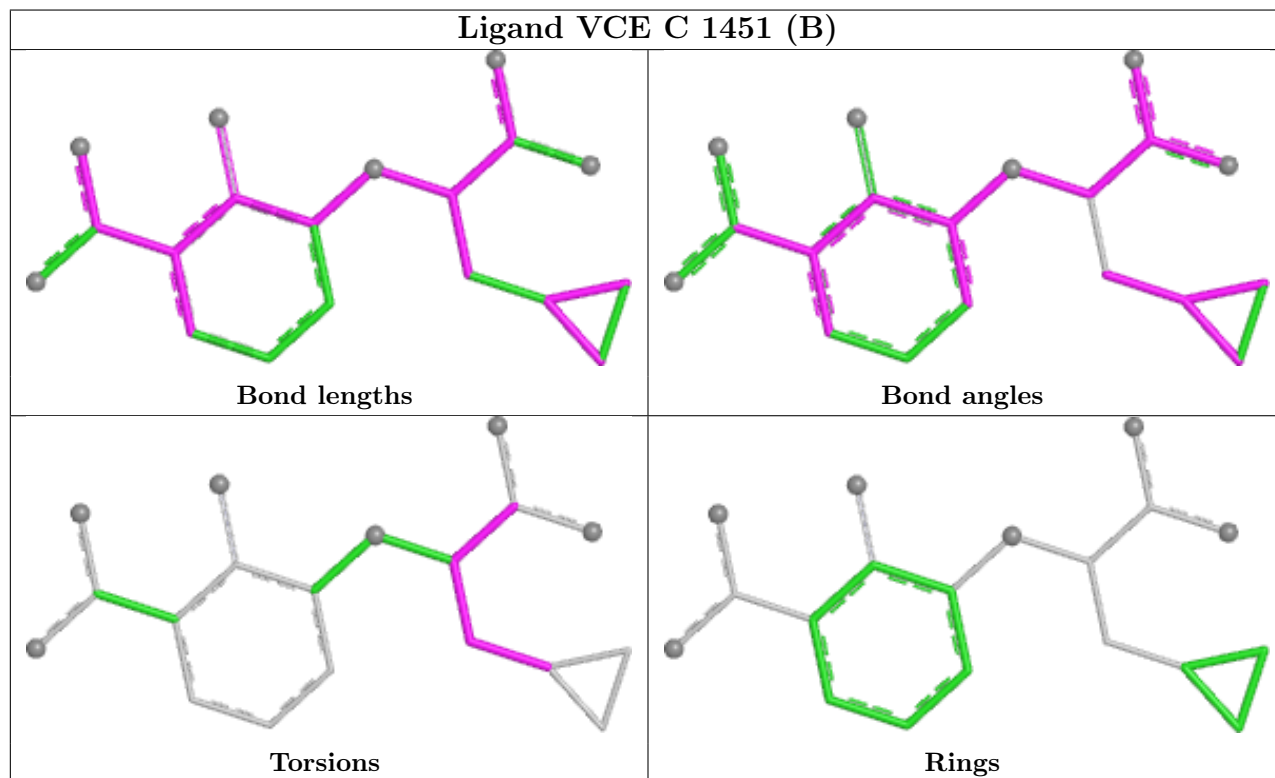
There are no ring outliers.

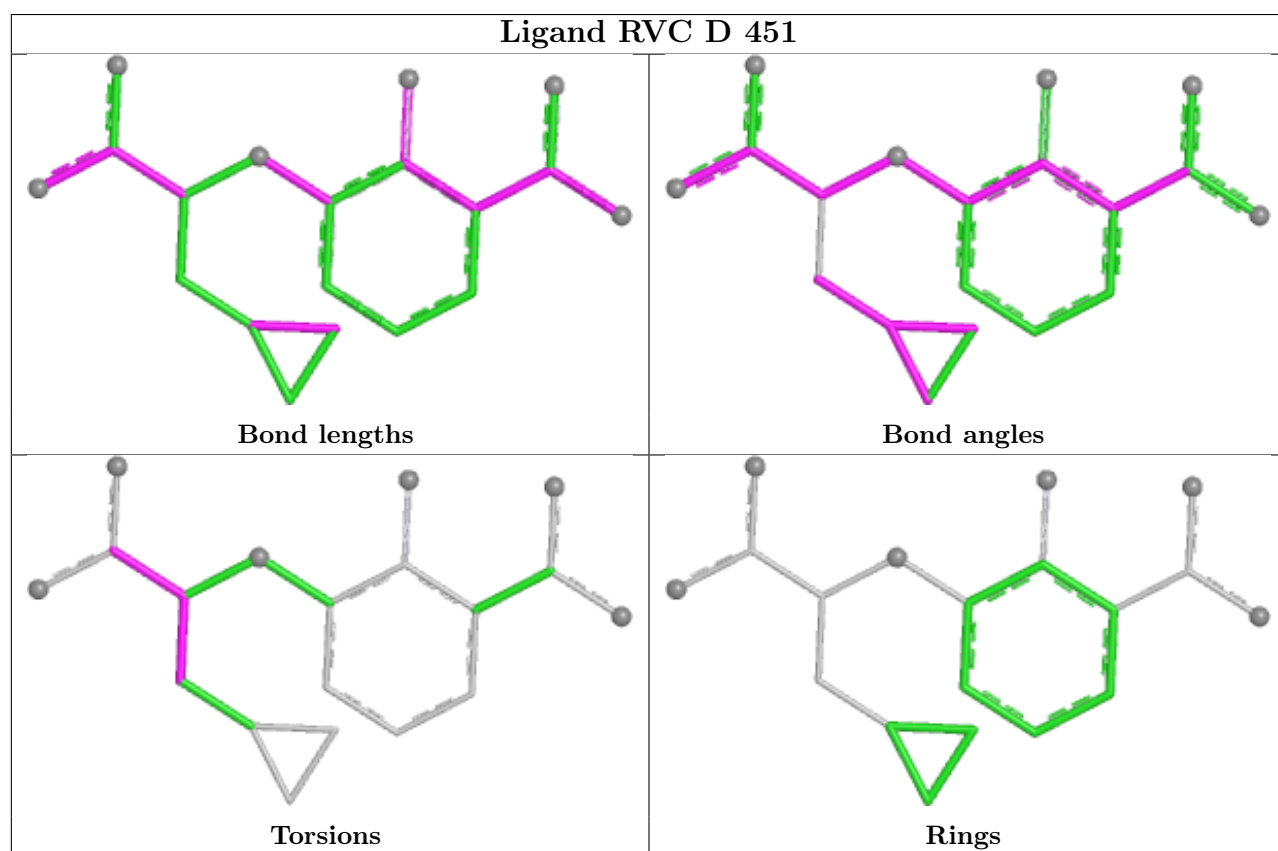
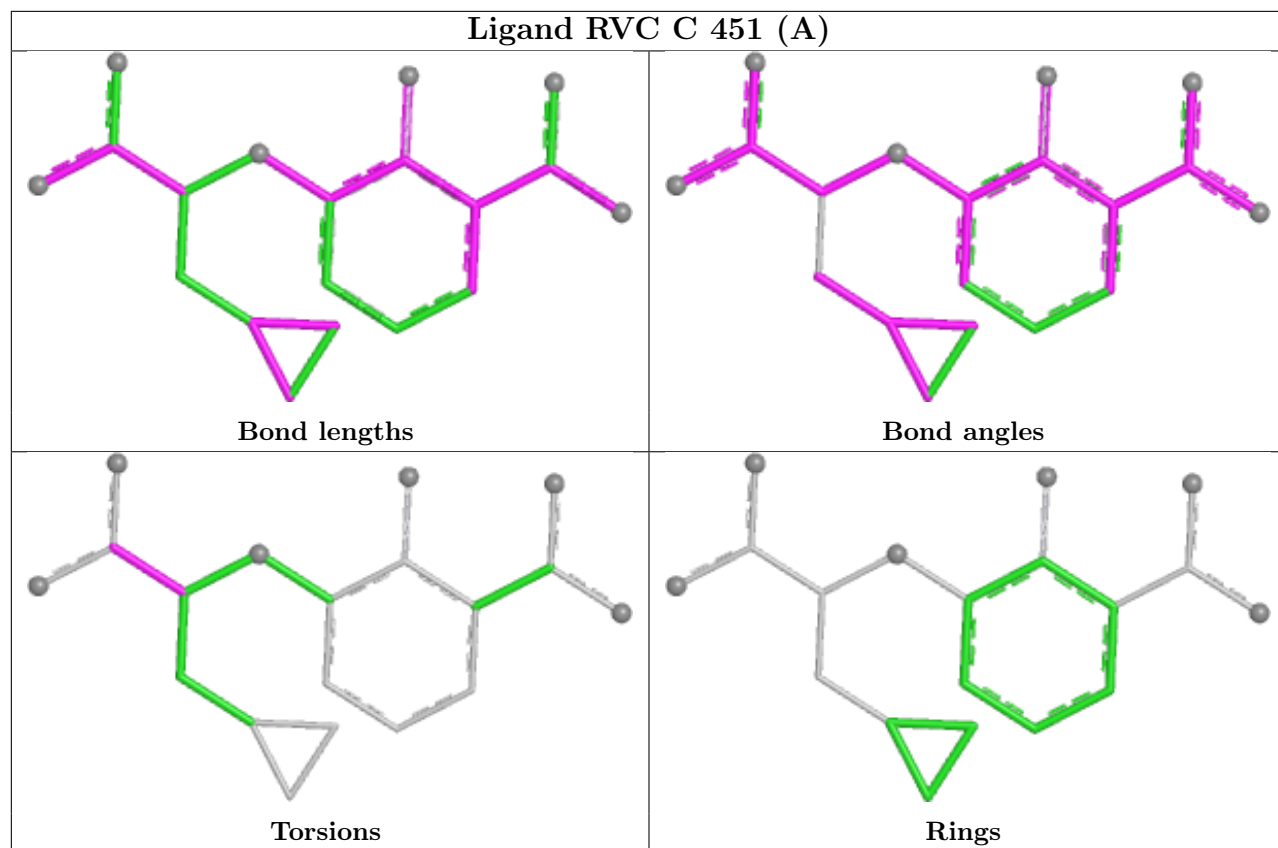
3 monomers are involved in 4 short contacts:

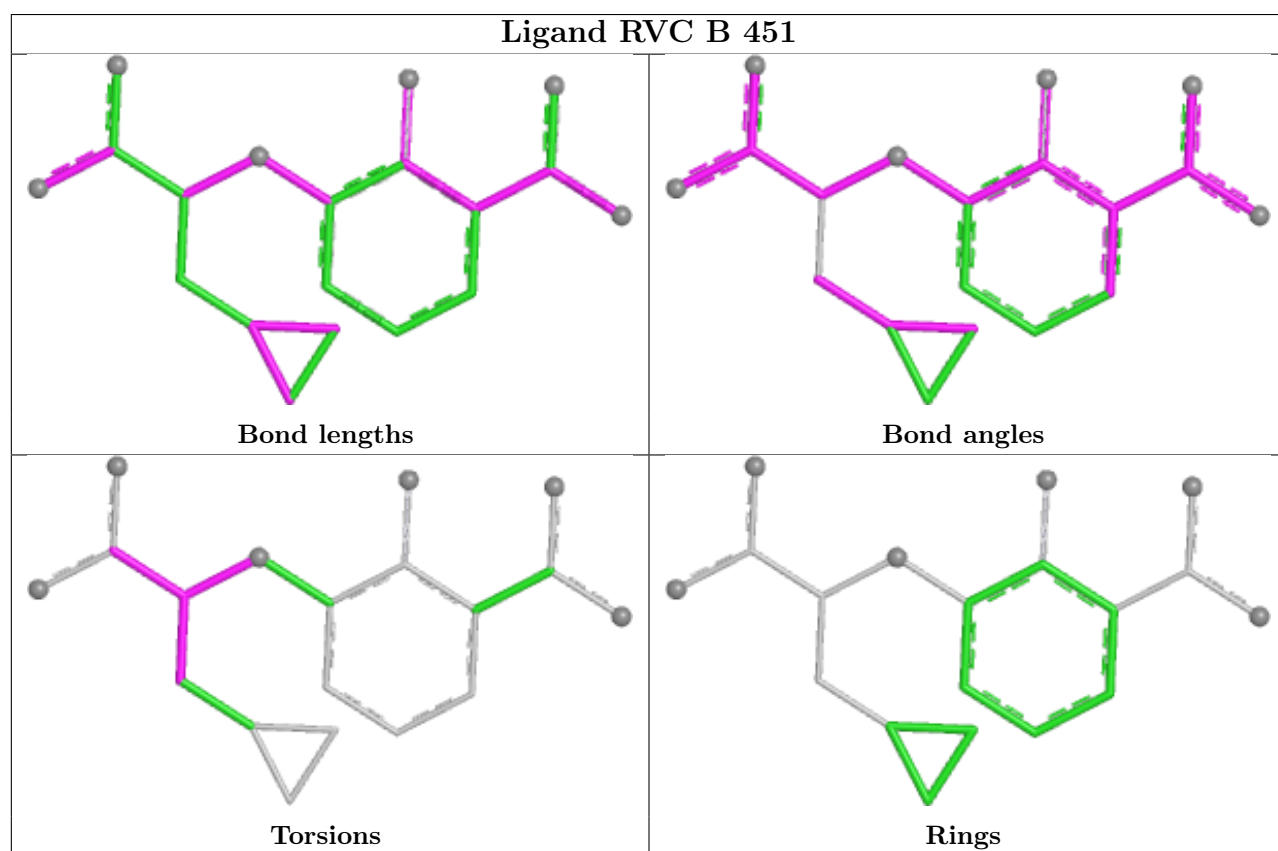
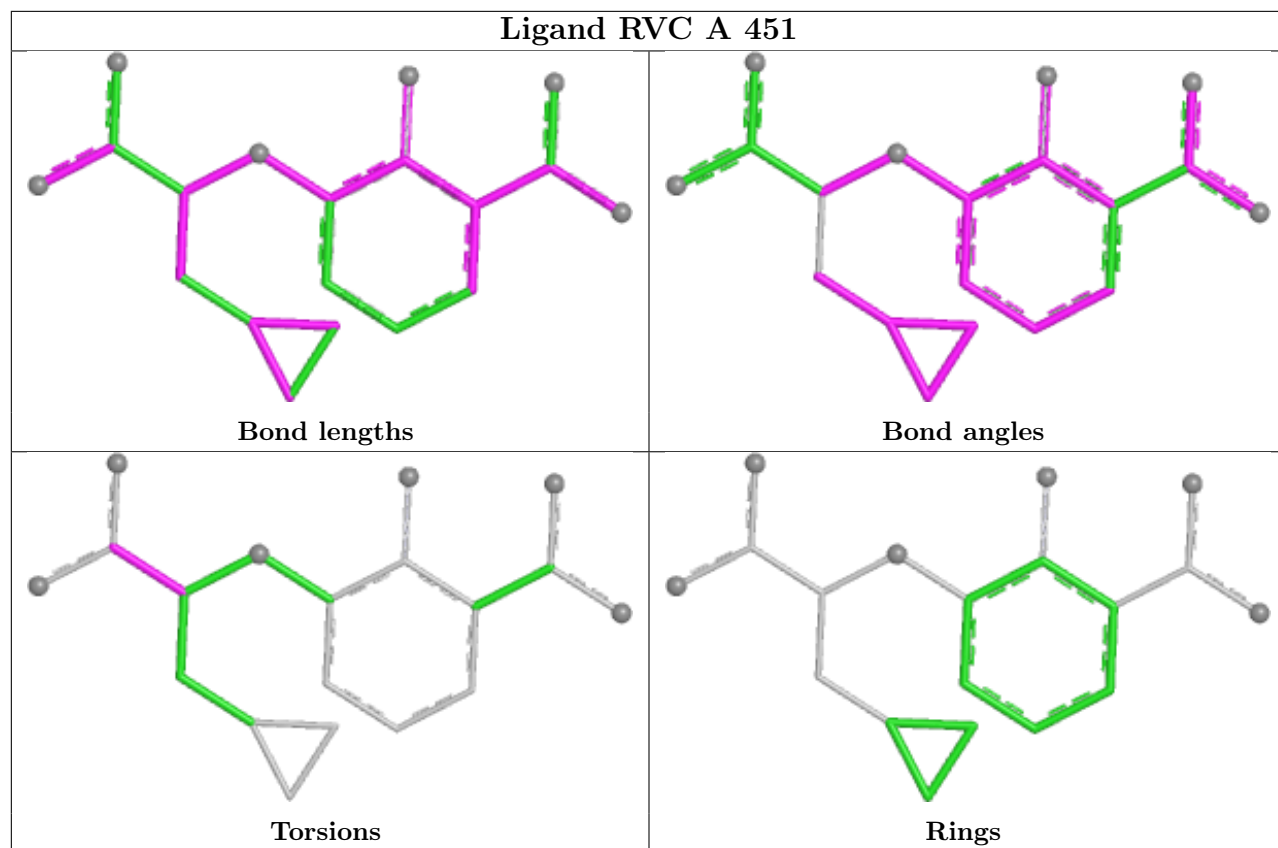
Mol	Chain	Res	Type	Clashes	Symm-Clashes
3	C	1451[B]	VCE	1	0
2	C	451[A]	RVC	2	0
2	A	451	RVC	1	0

The following is a two-dimensional graphical depiction of Mogul quality analysis of bond lengths, bond angles, torsion angles, and ring geometry for all instances of the Ligand of Interest. In

addition, ligands with molecular weight > 250 and outliers as shown on the validation Tables will also be included. For torsion angles, if less than 5% of the Mogul distribution of torsion angles is within 10 degrees of the torsion angle in question, then that torsion angle is considered an outlier. Any bond that is central to one or more torsion angles identified as an outlier by Mogul will be highlighted in the graph. For rings, the root-mean-square deviation (RMSD) between the ring in question and similar rings identified by Mogul is calculated over all ring torsion angles. If the average RMSD is greater than 60 degrees and the minimal RMSD between the ring in question and any Mogul-identified rings is also greater than 60 degrees, then that ring is considered an outlier. The outliers are highlighted in purple. The color gray indicates Mogul did not find sufficient equivalents in the CSD to analyse the geometry.







5.7 Other polymers [i](#)

There are no such residues in this entry.

5.8 Polymer linkage issues [i](#)

There are no chain breaks in this entry.

6 Fit of model and data

6.1 Protein, DNA and RNA chains

In the following table, the column labelled ‘#RSRZ > 2’ contains the number (and percentage) of RSRZ outliers, followed by percent RSRZ outliers for the chain as percentile scores relative to all X-ray entries and entries of similar resolution. The OWAB column contains the minimum, median, 95th percentile and maximum values of the occupancy-weighted average B-factor per residue. The column labelled ‘Q < 0.9’ lists the number of (and percentage) of residues with an average occupancy less than 0.9.

Mol	Chain	Analysed	<RSRZ>	#RSRZ>2	OWAB(Å ²)	Q<0.9
1	A	418/450 (92%)	0.09	18 (4%) 35 42	19, 39, 62, 88	8 (1%)
1	B	432/450 (96%)	0.11	19 (4%) 34 41	20, 37, 67, 77	8 (1%)
1	C	430/450 (95%)	0.06	21 (4%) 29 36	20, 36, 62, 91	8 (1%)
1	D	420/450 (93%)	0.44	43 (10%) 6 9	23, 49, 80, 90	7 (1%)
All	All	1700/1800 (94%)	0.18	101 (5%) 22 28	19, 40, 69, 91	31 (1%)

All (101) RSRZ outliers are listed below:

Mol	Chain	Res	Type	RSRZ
1	D	22	ALA	6.6
1	C	283	LEU	6.2
1	A	155	ILE	6.1
1	D	345	PRO	5.4
1	D	79	THR	4.8
1	A	347	SER	4.8
1	C	284	ALA	4.7
1	A	332	VAL	4.6
1	D	160	ALA	4.6
1	C	329	ARG	4.4
1	D	346	SER	4.4
1	B	282	ARG	4.3
1	B	332	VAL	4.3
1	C	332	VAL	4.3
1	B	23	GLY	4.2
1	C	279	ALA	4.0
1	D	14	ALA	4.0
1	A	345	PRO	4.0
1	B	288	LEU	4.0
1	B	330	GLY	3.9
1	B	77	GLY	3.8

Continued on next page...

Continued from previous page...

Mol	Chain	Res	Type	RSRZ
1	C	278	PRO	3.7
1	C	277	GLY	3.6
1	C	330	GLY	3.5
1	D	232	THR	3.5
1	D	155	ILE	3.5
1	D	154	GLY	3.4
1	D	259	ALA	3.3
1	A	22	ALA	3.3
1	D	166	ALA	3.2
1	B	274	LEU	3.2
1	D	321	ILE	3.2
1	C	286	ASP	3.1
1	C	280	ILE	3.1
1	B	331	SER	3.1
1	A	326	VAL	3.1
1	D	21	PRO	3.0
1	A	305	SER	3.0
1	D	286	ASP	2.9
1	D	326	VAL	2.9
1	A	290	SER	2.9
1	C	86	GLY	2.9
1	A	201	GLY	2.9
1	A	269	ALA	2.9
1	D	284	ALA	2.9
1	A	346	SER	2.9
1	A	271	THR	2.9
1	B	345	PRO	2.8
1	D	288	LEU	2.8
1	B	275	GLY	2.8
1	D	143	VAL	2.8
1	C	345	PRO	2.8
1	D	145	GLU	2.8
1	D	200	ALA	2.7
1	D	73	VAL	2.7
1	D	174	GLN	2.7
1	B	329	ARG	2.6
1	C	333	GLN	2.6
1	D	305	SER	2.6
1	A	232	THR	2.6
1	D	230	HIS	2.5
1	B	141	ILE	2.5
1	D	15	SER	2.5

Continued on next page...

Continued from previous page...

Mol	Chain	Res	Type	RSRZ
1	D	101	LEU	2.5
1	B	290	SER	2.5
1	C	331	SER	2.5
1	D	260	ASP	2.5
1	A	250	SER	2.4
1	D	394	ALA	2.4
1	A	270	GLY	2.4
1	D	23	GLY	2.4
1	A	287	ASP	2.4
1	C	282	ARG	2.3
1	D	51	ASP	2.3
1	B	305	SER	2.3
1	D	287	ASP	2.3
1	B	39	GLU	2.3
1	C	305	SER	2.3
1	B	22	ALA	2.3
1	D	81	ARG	2.3
1	D	271	THR	2.3
1	D	398	LEU	2.3
1	D	64	VAL	2.3
1	B	15	SER	2.2
1	D	425	GLU	2.2
1	C	317	SER	2.2
1	A	450	GLN	2.2
1	A	291	ASN	2.2
1	C	101	LEU	2.2
1	B	122	GLN	2.2
1	D	344	ASP	2.2
1	C	281	ASP	2.1
1	B	284	ALA	2.1
1	D	19	PRO	2.1
1	D	128	HIS	2.1
1	D	52	GLY	2.1
1	C	346	SER	2.1
1	D	270	GLY	2.1
1	D	415	TRP	2.1
1	D	208	LEU	2.0
1	C	259	ALA	2.0

6.2 Non-standard residues in protein, DNA, RNA chains

There are no non-standard protein/DNA/RNA residues in this entry.

6.3 Carbohydrates [i](#)

There are no monosaccharides in this entry.

6.4 Ligands [i](#)

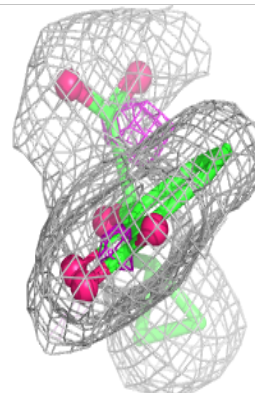
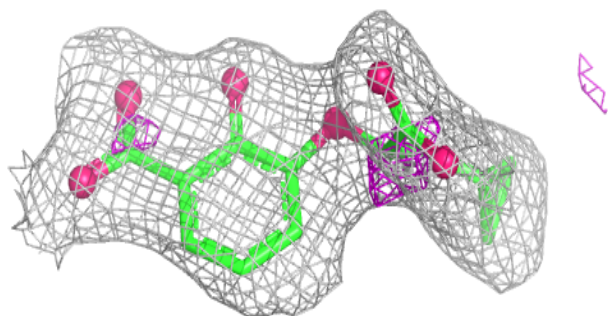
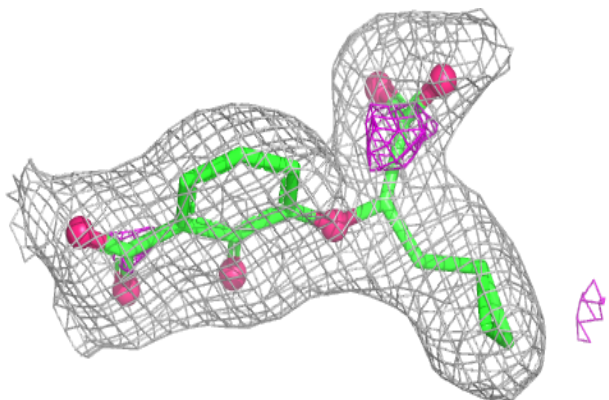
In the following table, the Atoms column lists the number of modelled atoms in the group and the number defined in the chemical component dictionary. The B-factors column lists the minimum, median, 95th percentile and maximum values of B factors of atoms in the group. The column labelled 'Q < 0.9' lists the number of atoms with occupancy less than 0.9.

Mol	Type	Chain	Res	Atoms	RSCC	RSR	B-factors(Å ²)	Q<0.9
3	VCE	C	1451[B]	19/19	0.88	0.14	29,36,45,46	19
2	RVC	C	451[A]	19/19	0.89	0.13	29,36,45,46	19
2	RVC	D	451	19/19	0.90	0.16	32,44,62,63	0
2	RVC	A	451	19/19	0.90	0.15	24,27,31,34	0
2	RVC	B	451	19/19	0.95	0.09	22,31,44,48	0

The following is a graphical depiction of the model fit to experimental electron density of all instances of the Ligand of Interest. In addition, ligands with molecular weight > 250 and outliers as shown on the geometry validation Tables will also be included. Each fit is shown from different orientation to approximate a three-dimensional view.

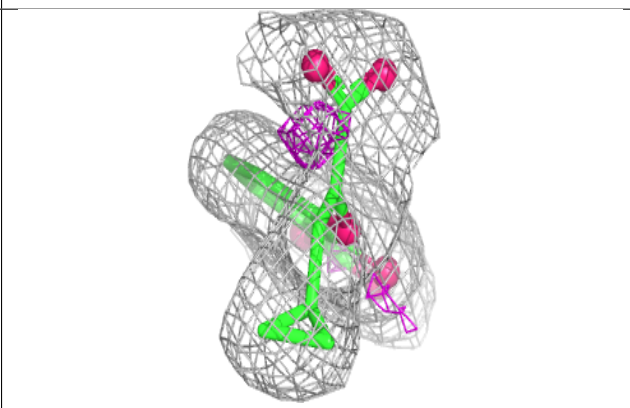
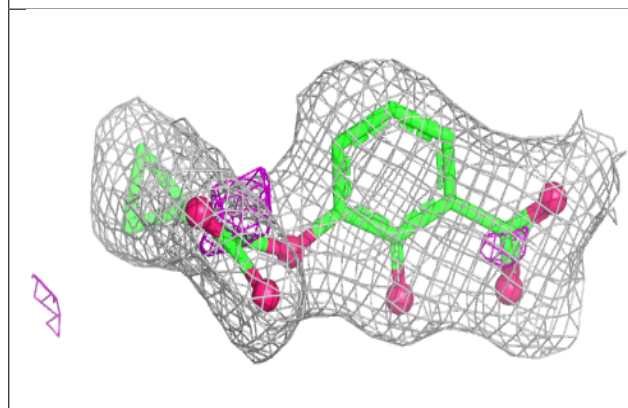
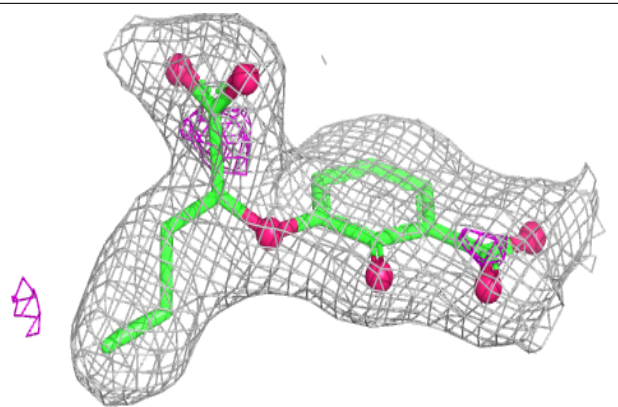
Electron density around VCE C 1451 (B):

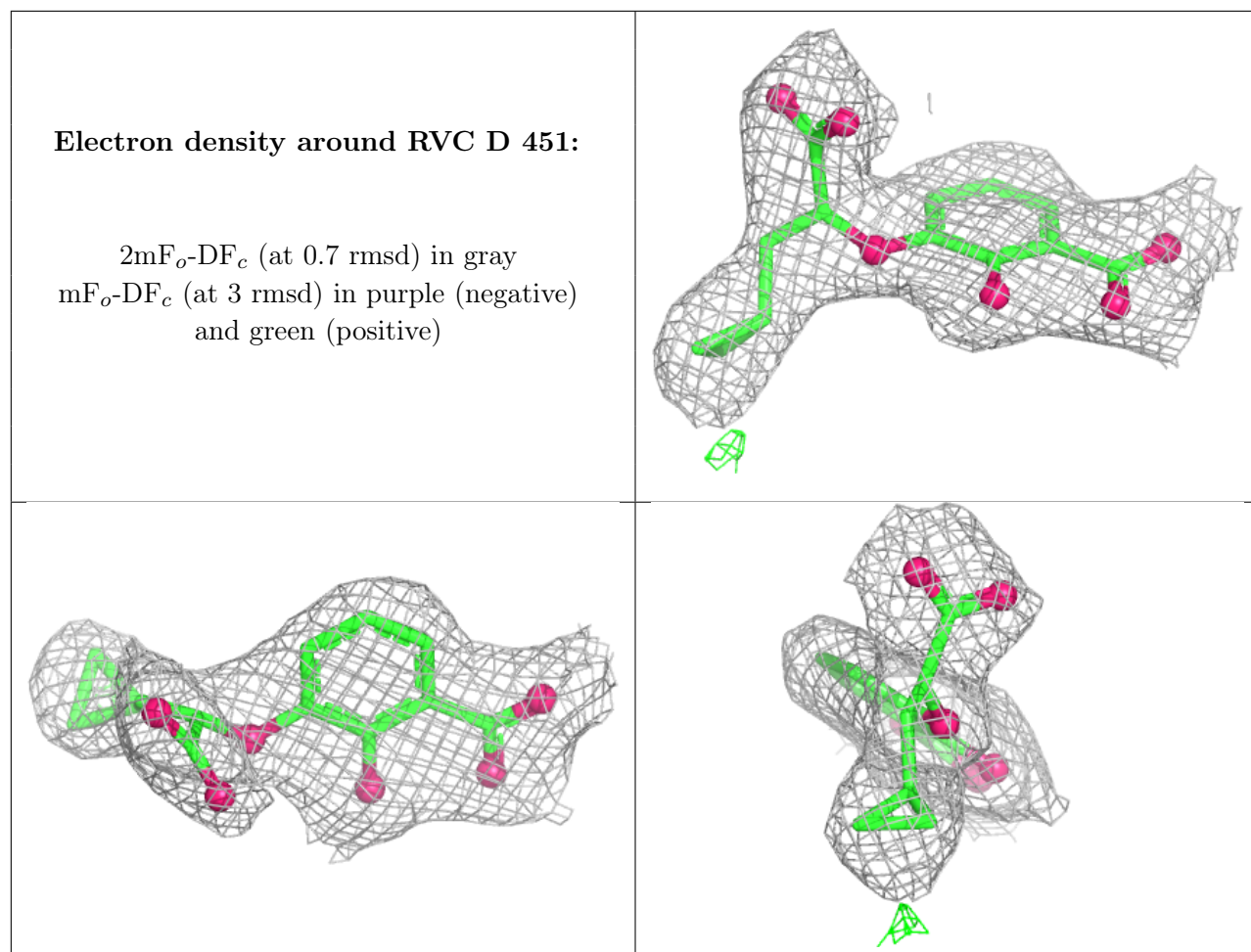
2mF_o-DF_c (at 0.7 rmsd) in gray
 mF_o-DF_c (at 3 rmsd) in purple (negative)
 and green (positive)



Electron density around RVC C 451 (A):

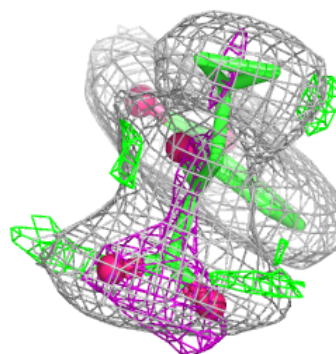
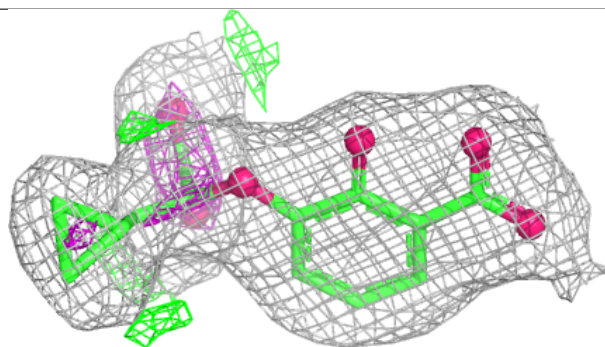
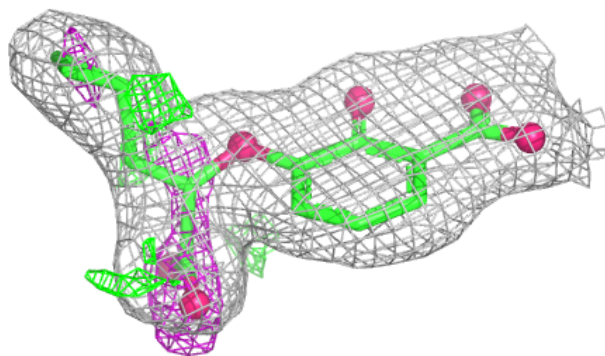
$2mF_o-DF_c$ (at 0.7 rmsd) in gray
 mF_o-DF_c (at 3 rmsd) in purple (negative)
and green (positive)



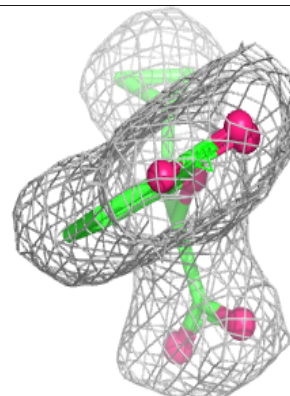
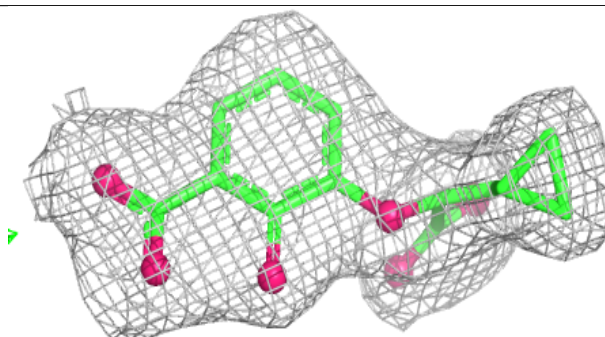
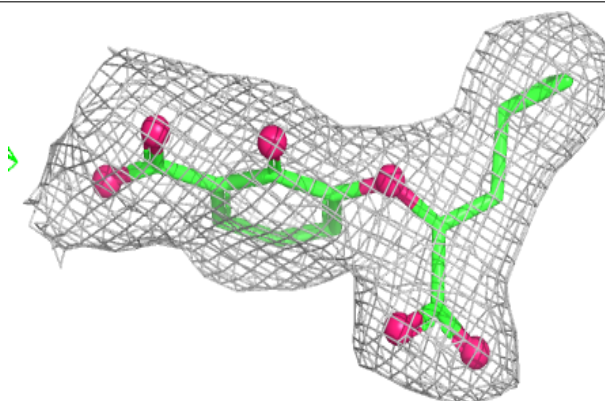


Electron density around RVC A 451:

$2mF_o-DF_c$ (at 0.7 rmsd) in gray
 mF_o-DF_c (at 3 rmsd) in purple (negative)
and green (positive)

**Electron density around RVC B 451:**

$2mF_o-DF_c$ (at 0.7 rmsd) in gray
 mF_o-DF_c (at 3 rmsd) in purple (negative)
and green (positive)



6.5 Other polymers [i](#)

There are no such residues in this entry.