



Full wwPDB X-ray Structure Validation Report ⓘ

Nov 12, 2024 – 09:43 AM EST

PDB ID : 3OKY
Title : Plexin A2 in complex with Semaphorin 6A
Authors : Janssen, B.J.C.; Robinson, R.A.; Bell, C.H.; Siebold, C.; Jones, E.Y.
Deposited on : 2010-08-25
Resolution : 2.19 Å(reported)

This is a Full wwPDB X-ray Structure Validation Report for a publicly released PDB entry.

We welcome your comments at validation@mail.wwpdb.org

A user guide is available at

<https://www.wwpdb.org/validation/2017/XrayValidationReportHelp>

with specific help available everywhere you see the ⓘ symbol.

The types of validation reports are described at

<http://www.wwpdb.org/validation/2017/FAQs#types>.

The following versions of software and data (see [references ⓘ](#)) were used in the production of this report:

MolProbity : 4.02b-467
Mogul : 2022.3.0, CSD as543be (2022)
Xtriage (Phenix) : 1.20.1
EDS : 3.0
Percentile statistics : 20231227.v01 (using entries in the PDB archive December 27th 2023)
CCP4 : 9.0.003 (Gargrove)
Density-Fitness : 1.0.11
Ideal geometry (proteins) : Engh & Huber (2001)
Ideal geometry (DNA, RNA) : Parkinson et al. (1996)
Validation Pipeline (wwPDB-VP) : 2.39

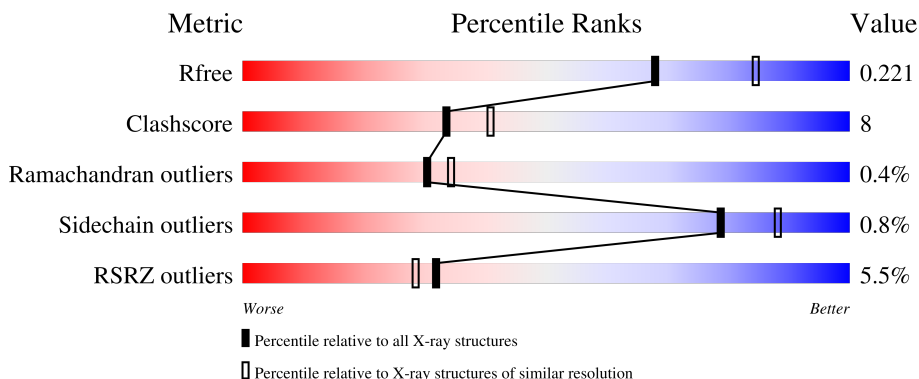
1 Overall quality at a glance

The following experimental techniques were used to determine the structure:

X-RAY DIFFRACTION

The reported resolution of this entry is 2.19 Å.

Percentile scores (ranging between 0-100) for global validation metrics of the entry are shown in the following graphic. The table shows the number of entries on which the scores are based.



Metric	Whole archive (#Entries)	Similar resolution (#Entries, resolution range(Å))
R_{free}	164625	5791 (2.20-2.20)
Clashscore	180529	6634 (2.20-2.20)
Ramachandran outliers	177936	6560 (2.20-2.20)
Sidechain outliers	177891	6561 (2.20-2.20)
RSRZ outliers	164620	5791 (2.20-2.20)

The table below summarises the geometric issues observed across the polymeric chains and their fit to the electron density. The red, orange, yellow and green segments of the lower bar indicate the fraction of residues that contain outliers for ≥ 3 , 2, 1 and 0 types of geometric quality criteria respectively. A grey segment represents the fraction of residues that are not modelled. The numeric value for each fraction is indicated below the corresponding segment, with a dot representing fractions $\leq 5\%$. The upper red bar (where present) indicates the fraction of residues that have poor fit to the electron density. The numeric value is given above the bar.

Mol	Chain	Length	Quality of chain
1	A	681	 5% 75% 14% 11%
2	B	565	 6% 79% 16% . .
3	C	2	 100%

The following table lists non-polymeric compounds, carbohydrate monomers and non-standard residues in protein, DNA, RNA chains that are outliers for geometric or electron-density-fit criteria:

Mol	Type	Chain	Res	Chirality	Geometry	Clashes	Electron density
5	GOL	A	2006	-	-	X	-

2 Entry composition [i](#)

There are 6 unique types of molecules in this entry. The entry contains 9600 atoms, of which 0 are hydrogens and 0 are deuteriums.

In the tables below, the ZeroOcc column contains the number of atoms modelled with zero occupancy, the AltConf column contains the number of residues with at least one atom in alternate conformation and the Trace column contains the number of residues modelled with at most 2 atoms.

- Molecule 1 is a protein called Plexin-A2.

Mol	Chain	Residues	Atoms					ZeroOcc	AltConf	Trace
			Total	C	N	O	S			
1	A	609	4767	3028	808	903	28	0	0	0

There are 12 discrepancies between the modelled and reference sequences:

Chain	Residue	Modelled	Actual	Comment	Reference
A	32	GLU	-	expression tag	UNP P70207
A	33	THR	-	expression tag	UNP P70207
A	34	GLY	-	expression tag	UNP P70207
A	704	GLY	-	expression tag	UNP P70207
A	705	THR	-	expression tag	UNP P70207
A	706	LYS	-	expression tag	UNP P70207
A	707	HIS	-	expression tag	UNP P70207
A	708	HIS	-	expression tag	UNP P70207
A	709	HIS	-	expression tag	UNP P70207
A	710	HIS	-	expression tag	UNP P70207
A	711	HIS	-	expression tag	UNP P70207
A	712	HIS	-	expression tag	UNP P70207

- Molecule 2 is a protein called Putative uncharacterized protein.

Mol	Chain	Residues	Atoms					ZeroOcc	AltConf	Trace
			Total	C	N	O	S			
2	B	540	4302	2723	747	800	32	0	0	0

There are 12 discrepancies between the modelled and reference sequences:

Chain	Residue	Modelled	Actual	Comment	Reference
B	16	GLU	-	expression tag	UNP Q8BUT0
B	17	THR	-	expression tag	UNP Q8BUT0
B	18	GLY	-	expression tag	UNP Q8BUT0
B	572	GLY	-	expression tag	UNP Q8BUT0

Continued on next page...

Continued from previous page...

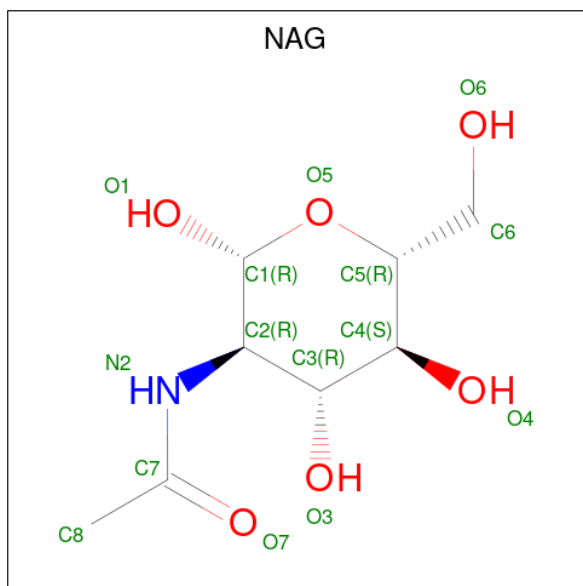
Chain	Residue	Modelled	Actual	Comment	Reference
B	573	THR	-	expression tag	UNP Q8BUT0
B	574	LYS	-	expression tag	UNP Q8BUT0
B	575	HIS	-	expression tag	UNP Q8BUT0
B	576	HIS	-	expression tag	UNP Q8BUT0
B	577	HIS	-	expression tag	UNP Q8BUT0
B	578	HIS	-	expression tag	UNP Q8BUT0
B	579	HIS	-	expression tag	UNP Q8BUT0
B	580	HIS	-	expression tag	UNP Q8BUT0

- Molecule 3 is an oligosaccharide called 2-acetamido-2-deoxy-beta-D-glucopyranose-(1-4)-2-acetamido-2-deoxy-beta-D-glucopyranose.



Mol	Chain	Residues	Atoms				ZeroOcc	AltConf	Trace
			Total	C	N	O			
3	C	2	28	16	2	10	0	0	0

- Molecule 4 is 2-acetamido-2-deoxy-beta-D-glucopyranose (three-letter code: NAG) (formula: C₈H₁₅NO₆).



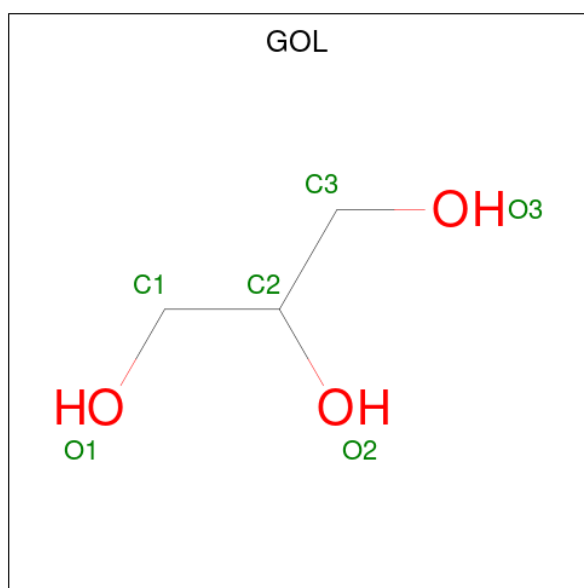
Mol	Chain	Residues	Atoms				ZeroOcc	AltConf
			Total	C	N	O		
4	A	1	14	8	1	5	0	0

Continued on next page...

Continued from previous page...

Mol	Chain	Residues	Atoms				ZeroOcc	AltConf
4	A	1	Total	C	N	O	0	0
			14	8	1	5		
4	A	1	Total	C	N	O	0	0
			14	8	1	5		
4	A	1	Total	C	N	O	0	0
			14	8	1	5		
4	B	1	Total	C	N	O	0	0
			14	8	1	5		
4	B	1	Total	C	N	O	0	0
			14	8	1	5		

- Molecule 5 is GLYCEROL (three-letter code: GOL) (formula: $C_3H_8O_3$).



Mol	Chain	Residues	Atoms			ZeroOcc	AltConf
5	A	1	Total	C	O	0	0
			6	3	3		
5	A	1	Total	C	O	0	0
			6	3	3		
5	A	1	Total	C	O	0	0
			6	3	3		
5	B	1	Total	C	O	0	0
			6	3	3		
5	B	1	Total	C	O	0	0
			6	3	3		

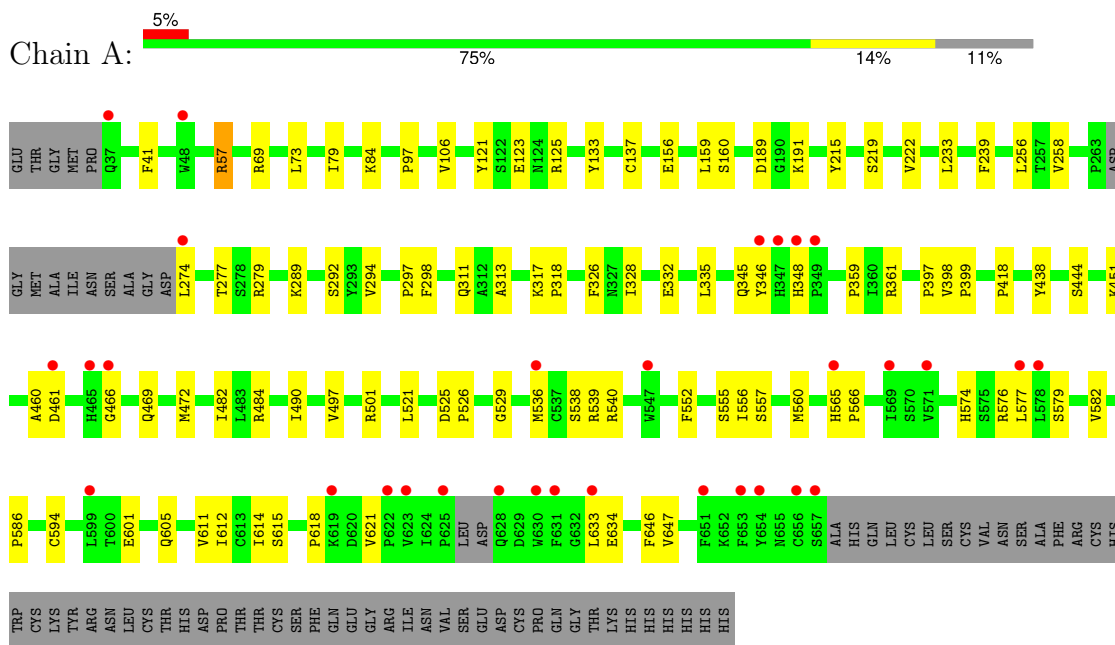
- Molecule 6 is water.

Mol	Chain	Residues	Atoms		ZeroOcc	AltConf
6	A	184	Total 184	O 184	0	0
6	B	205	Total 205	O 205	0	0

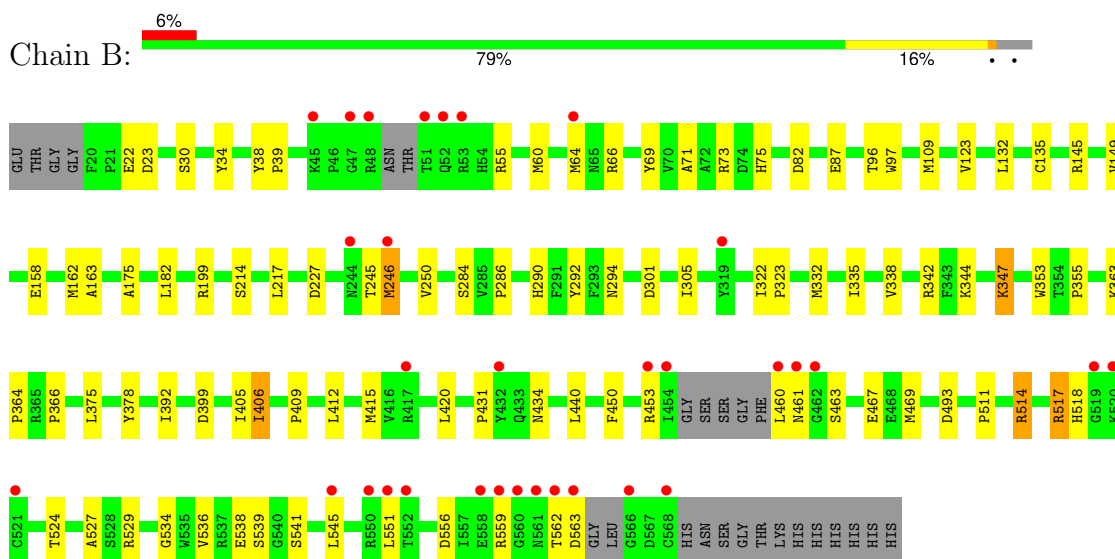
3 Residue-property plots

These plots are drawn for all protein, RNA, DNA and oligosaccharide chains in the entry. The first graphic for a chain summarises the proportions of the various outlier classes displayed in the second graphic. The second graphic shows the sequence view annotated by issues in geometry and electron density. Residues are color-coded according to the number of geometric quality criteria for which they contain at least one outlier: green = 0, yellow = 1, orange = 2 and red = 3 or more. A red dot above a residue indicates a poor fit to the electron density ($RSRZ > 2$). Stretches of 2 or more consecutive residues without any outlier are shown as a green connector. Residues present in the sample, but not in the model, are shown in grey.

- Molecule 1: Plexin-A2



- Molecule 2: Putative uncharacterized protein



- Molecule 3: 2-acetamido-2-deoxy-beta-D-glucopyranose-(1-4)-2-acetamido-2-deoxy-beta-D-glucopyranose

Chain C:

100%

MAG1
MAG2

4 Data and refinement statistics

Property	Value	Source
Space group	C 2 2 21	Depositor
Cell constants a, b, c, α , β , γ	155.54Å 159.60Å 139.26Å 90.00° 90.00° 90.00°	Depositor
Resolution (Å)	39.90 – 2.19 39.90 – 2.19	Depositor EDS
% Data completeness (in resolution range)	93.6 (39.90-2.19) 93.6 (39.90-2.19)	Depositor EDS
R_{merge}	(Not available)	Depositor
R_{sym}	(Not available)	Depositor
$\langle I/\sigma(I) \rangle$ ¹	2.04 (at 2.20Å)	Xtrriage
Refinement program	PHENIX (phenix.refine)	Depositor
R, R_{free}	0.190 , 0.230 0.182 , 0.221	Depositor DCC
R_{free} test set	4197 reflections (5.08%)	wwPDB-VP
Wilson B-factor (Å ²)	36.5	Xtrriage
Anisotropy	0.545	Xtrriage
Bulk solvent k_{sol} (e/Å ³), B_{sol} (Å ²)	0.35 , 50.6	EDS
L-test for twinning ²	$\langle L \rangle = 0.48$, $\langle L^2 \rangle = 0.32$	Xtrriage
Estimated twinning fraction	0.026 for -k,-h,-l	Xtrriage
F_o, F_c correlation	0.96	EDS
Total number of atoms	9600	wwPDB-VP
Average B, all atoms (Å ²)	50.0	wwPDB-VP

Xtrriage's analysis on translational NCS is as follows: *The largest off-origin peak in the Patterson function is 3.36% of the height of the origin peak. No significant pseudotranslation is detected.*

¹Intensities estimated from amplitudes.

²Theoretical values of $\langle |L| \rangle$, $\langle L^2 \rangle$ for acentric reflections are 0.5, 0.333 respectively for untwinned datasets, and 0.375, 0.2 for perfectly twinned datasets.

5 Model quality [i](#)

5.1 Standard geometry [i](#)

Bond lengths and bond angles in the following residue types are not validated in this section: GOL, NAG

The Z score for a bond length (or angle) is the number of standard deviations the observed value is removed from the expected value. A bond length (or angle) with $|Z| > 5$ is considered an outlier worth inspection. RMSZ is the root-mean-square of all Z scores of the bond lengths (or angles).

Mol	Chain	Bond lengths		Bond angles	
		RMSZ	# Z >5	RMSZ	# Z >5
1	A	0.30	0/4879	0.48	0/6621
2	B	0.30	0/4403	0.49	0/5957
All	All	0.30	0/9282	0.48	0/12578

There are no bond length outliers.

There are no bond angle outliers.

There are no chirality outliers.

There are no planarity outliers.

5.2 Too-close contacts [i](#)

In the following table, the Non-H and H(model) columns list the number of non-hydrogen atoms and hydrogen atoms in the chain respectively. The H(added) column lists the number of hydrogen atoms added and optimized by MolProbity. The Clashes column lists the number of clashes within the asymmetric unit, whereas Symm-Clashes lists symmetry-related clashes.

Mol	Chain	Non-H	H(model)	H(added)	Clashes	Symm-Clashes
1	A	4767	0	4654	69	0
2	B	4302	0	4198	70	0
3	C	28	0	25	0	0
4	A	56	0	52	0	0
4	B	28	0	26	1	0
5	A	18	0	24	8	0
5	B	12	0	16	5	0
6	A	184	0	0	3	0
6	B	205	0	0	0	0
All	All	9600	0	8995	138	0

The all-atom clashscore is defined as the number of clashes found per 1000 atoms (including

hydrogen atoms). The all-atom clashscore for this structure is 8.

All (138) close contacts within the same asymmetric unit are listed below, sorted by their clash magnitude.

Atom-1	Atom-2	Interatomic distance (Å)	Clash overlap (Å)
2:B:23:ASP:H	2:B:415:MET:HE1	1.28	0.96
1:A:576:ARG:H	1:A:615:SER:HB3	1.53	0.74
1:A:646:PHE:CD1	1:A:647:VAL:HG23	2.24	0.73
2:B:344:LYS:HE2	2:B:399:ASP:HA	1.71	0.72
1:A:121:TYR:HB2	5:A:2006:GOL:H32	1.72	0.72
2:B:453:ARG:HB2	2:B:461:ASN:O	1.91	0.71
1:A:57:ARG:HG3	1:A:121:TYR:OH	1.96	0.66
1:A:328:ILE:HG22	1:A:361:ARG:HE	1.60	0.66
1:A:41:PHE:HE1	1:A:79:ILE:HD11	1.60	0.66
2:B:514:ARG:O	2:B:517:ARG:HB3	1.96	0.66
1:A:294:VAL:HG22	5:A:2001:GOL:H2	1.79	0.65
1:A:605:GLN:HB3	1:A:612:ILE:HB	1.79	0.64
2:B:23:ASP:H	2:B:415:MET:CE	2.09	0.64
2:B:30:SER:HB2	2:B:469:MET:HB3	1.79	0.64
1:A:219:SER:HB2	1:A:222:VAL:O	1.99	0.63
1:A:326:PHE:CG	1:A:359:PRO:HG3	2.34	0.63
1:A:121:TYR:H	5:A:2006:GOL:H32	1.63	0.62
1:A:69:ARG:NH1	1:A:84:LYS:HG3	2.15	0.61
1:A:461:ASP:OD2	1:A:466:GLY:HA3	2.01	0.61
2:B:335:ILE:O	2:B:338:VAL:HG12	2.04	0.58
1:A:121:TYR:N	5:A:2006:GOL:H32	2.17	0.58
2:B:305:ILE:HG22	2:B:460:LEU:HD21	1.86	0.57
2:B:342:ARG:HE	2:B:355:PRO:HB3	1.70	0.57
2:B:66:ARG:HD3	2:B:82:ASP:OD2	2.04	0.56
1:A:482:ILE:HG23	1:A:497:VAL:HG13	1.86	0.56
1:A:57:ARG:HG3	1:A:121:TYR:CZ	2.40	0.55
1:A:482:ILE:HD13	1:A:497:VAL:HG11	1.89	0.55
1:A:444:SER:HB3	1:A:460:ALA:HB3	1.88	0.55
2:B:405:ILE:O	2:B:406:ILE:HB	2.07	0.54
1:A:137:CYS:SG	1:A:159:LEU:HD22	2.47	0.54
1:A:41:PHE:CE1	1:A:79:ILE:HD11	2.42	0.53
2:B:409:PRO:HG2	2:B:412:LEU:HD21	1.89	0.53
2:B:467:GLU:OE2	2:B:514:ARG:NH1	2.42	0.53
1:A:529:GLY:HA3	1:A:552:PHE:CZ	2.44	0.53
2:B:431:PRO:HG3	2:B:545:LEU:CD2	2.39	0.52
2:B:64:MET:HG2	2:B:69:TYR:CE2	2.44	0.52
2:B:175:ALA:HB3	5:B:2002:GOL:H11	1.92	0.52
1:A:121:TYR:HB2	5:A:2006:GOL:C3	2.38	0.52

Continued on next page...

Continued from previous page...

Atom-1	Atom-2	Interatomic distance (Å)	Clash overlap (Å)
2:B:145:ARG:HG2	2:B:158:GLU:HA	1.92	0.52
2:B:511:PRO:O	2:B:514:ARG:NH2	2.42	0.52
1:A:256:LEU:HD11	1:A:335:LEU:HD21	1.92	0.51
1:A:560:MET:HE1	1:A:582:VAL:HG11	1.92	0.51
2:B:22:GLU:HG3	2:B:415:MET:HE1	1.93	0.51
2:B:405:ILE:HG22	2:B:406:ILE:HG12	1.92	0.51
1:A:618:PRO:O	1:A:621:VAL:HG22	2.11	0.51
2:B:406:ILE:HG22	2:B:406:ILE:O	2.10	0.51
1:A:521:LEU:HD13	1:A:555:SER:C	2.31	0.51
2:B:556:ASP:O	2:B:559:ARG:O	2.29	0.50
1:A:106:VAL:HG12	6:A:3121:HOH:O	2.12	0.50
2:B:545:LEU:N	2:B:545:LEU:HD12	2.26	0.50
2:B:420:LEU:HD13	2:B:440:LEU:HD13	1.94	0.50
2:B:450:PHE:CD1	2:B:463:SER:HB2	2.47	0.50
2:B:123:VAL:HB	2:B:135:CYS:HB2	1.94	0.50
2:B:175:ALA:O	5:B:2002:GOL:H32	2.11	0.50
2:B:22:GLU:HG3	2:B:415:MET:CE	2.41	0.49
2:B:245:THR:O	2:B:246:MET:HB2	2.13	0.49
2:B:518:HIS:ND1	2:B:524:THR:HG22	2.28	0.49
1:A:318:PRO:HD3	1:A:332:GLU:O	2.13	0.49
2:B:301:ASP:HB2	5:B:2004:GOL:H32	1.93	0.49
2:B:60:MET:HE3	5:B:2002:GOL:H2	1.95	0.49
2:B:214:SER:HA	2:B:217:LEU:O	2.12	0.49
2:B:539:SER:HB2	2:B:541:SER:OG	2.13	0.49
1:A:539:ARG:HG3	6:A:3117:HOH:O	2.12	0.48
1:A:123:GLU:O	1:A:125:ARG:HG3	2.12	0.48
1:A:560:MET:HE3	1:A:586:PRO:HD2	1.95	0.48
1:A:326:PHE:CD1	1:A:359:PRO:HG3	2.49	0.48
1:A:576:ARG:N	1:A:615:SER:HB3	2.25	0.48
1:A:121:TYR:HD1	5:A:2006:GOL:H11	1.78	0.48
1:A:258:VAL:HG11	1:A:346:TYR:CE1	2.48	0.48
1:A:579:SER:HA	1:A:612:ILE:HD13	1.96	0.48
1:A:397:PRO:HD2	2:B:109:MET:O	2.15	0.47
2:B:562:THR:O	2:B:563:ASP:OD1	2.33	0.47
1:A:577:LEU:HD23	1:A:614:ILE:HG12	1.96	0.47
1:A:317:LYS:HB3	1:A:318:PRO:HD2	1.97	0.47
1:A:311:GLN:O	1:A:484:ARG:HD3	2.15	0.46
1:A:594:CYS:O	1:A:601:GLU:HA	2.16	0.46
1:A:633:LEU:HG	1:A:634:GLU:H	1.80	0.46
2:B:60:MET:HG2	2:B:71:ALA:HB3	1.97	0.46
2:B:75:HIS:CE1	2:B:96:THR:HG1	2.34	0.46

Continued on next page...

Continued from previous page...

Atom-1	Atom-2	Interatomic distance (Å)	Clash overlap (Å)
2:B:534:GLY:N	2:B:545:LEU:HD11	2.31	0.46
1:A:297:PRO:HG2	1:A:418:PRO:HA	1.96	0.46
1:A:540:ARG:HD3	6:A:3171:HOH:O	2.16	0.46
2:B:66:ARG:NH2	2:B:493:ASP:OD1	2.45	0.46
2:B:434:ASN:ND2	4:B:1434:NAG:C7	2.79	0.46
2:B:245:THR:O	2:B:246:MET:CB	2.64	0.45
1:A:73:LEU:HD23	1:A:79:ILE:HA	1.98	0.45
2:B:55:ARG:O	2:B:73:ARG:NH2	2.50	0.45
2:B:364:PRO:HG3	2:B:378:TYR:CE2	2.51	0.45
2:B:527:ALA:O	2:B:529:ARG:HG3	2.17	0.45
2:B:342:ARG:HE	2:B:355:PRO:CB	2.29	0.44
1:A:294:VAL:CG2	5:A:2001:GOL:H2	2.46	0.44
2:B:132:LEU:HG	2:B:149:VAL:HG22	2.00	0.44
2:B:332:MET:CE	2:B:335:ILE:HD12	2.48	0.44
2:B:301:ASP:H	5:B:2004:GOL:C3	2.31	0.44
2:B:284:SER:HB3	2:B:292:TYR:CD1	2.53	0.44
2:B:551:LEU:HD12	2:B:551:LEU:N	2.32	0.44
1:A:233:LEU:HD23	1:A:239:PHE:HB3	1.99	0.43
1:A:292:SER:O	1:A:294:VAL:HG23	2.18	0.43
1:A:469:GLN:HE22	1:A:472:MET:HE2	1.83	0.43
2:B:375:LEU:HD12	2:B:375:LEU:N	2.33	0.43
2:B:536:VAL:HG12	2:B:538:GLU:H	1.83	0.43
1:A:398:VAL:HA	1:A:399:PRO:HD3	1.92	0.43
1:A:574:HIS:ND1	1:A:618:PRO:HD3	2.33	0.43
2:B:39:PRO:HA	2:B:87:GLU:O	2.18	0.43
2:B:162:MET:O	2:B:163:ALA:HB3	2.18	0.43
1:A:536:MET:CE	1:A:538:SER:HB3	2.49	0.43
1:A:469:GLN:HE22	1:A:472:MET:CE	2.32	0.43
2:B:366:PRO:HB3	2:B:392:ILE:HB	2.00	0.42
1:A:565:HIS:HA	1:A:566:PRO:HA	1.86	0.42
2:B:322:ILE:HA	2:B:323:PRO:HD3	1.79	0.42
2:B:431:PRO:HG3	2:B:545:LEU:HD23	2.01	0.42
1:A:345:GLN:HG2	1:A:348:HIS:CE1	2.54	0.42
2:B:286:PRO:HA	2:B:290:HIS:ND1	2.35	0.42
1:A:189:ASP:O	1:A:191:LYS:HD2	2.19	0.42
2:B:97:TRP:CD1	2:B:145:ARG:NH1	2.88	0.42
1:A:222:VAL:HG11	1:A:289:LYS:HG2	2.02	0.41
1:A:277:THR:HG22	1:A:279:ARG:HG3	2.01	0.41
1:A:605:GLN:O	1:A:611:VAL:HA	2.20	0.41
2:B:109:MET:HE2	2:B:109:MET:HB3	1.95	0.41
2:B:182:LEU:O	2:B:199:ARG:HA	2.20	0.41

Continued on next page...

Continued from previous page...

Atom-1	Atom-2	Interatomic distance (Å)	Clash overlap (Å)
2:B:250:VAL:O	2:B:294:ASN:HB3	2.20	0.41
1:A:274:LEU:HD23	1:A:274:LEU:N	2.36	0.41
1:A:156:GLU:HB3	1:A:215:TYR:CE2	2.56	0.41
1:A:121:TYR:CB	5:A:2006:GOL:H32	2.48	0.41
1:A:577:LEU:CD2	1:A:614:ILE:HG12	2.50	0.41
2:B:344:LYS:HD3	2:B:353:TRP:HB3	2.03	0.41
1:A:536:MET:HE1	1:A:538:SER:HB3	2.03	0.41
1:A:555:SER:O	1:A:557:SER:N	2.54	0.41
2:B:227:ASP:OD1	2:B:227:ASP:C	2.59	0.41
2:B:405:ILE:O	2:B:406:ILE:CB	2.69	0.40
1:A:313:ALA:HB1	1:A:335:LEU:HD11	2.04	0.40
2:B:34:TYR:CZ	2:B:517:ARG:HD3	2.56	0.40
1:A:97:PRO:HB3	1:A:133:TYR:HB3	2.04	0.40
2:B:38:TYR:HA	2:B:39:PRO:HD3	1.90	0.40
1:A:57:ARG:O	1:A:490:ILE:HG12	2.22	0.40
1:A:525:ASP:HA	1:A:526:PRO:HD3	1.88	0.40
2:B:363:LYS:HA	2:B:364:PRO:C	2.42	0.40
2:B:431:PRO:HG3	2:B:545:LEU:HD22	2.03	0.40

There are no symmetry-related clashes.

5.3 Torsion angles [i](#)

5.3.1 Protein backbone [i](#)

In the following table, the Percentiles column shows the percent Ramachandran outliers of the chain as a percentile score with respect to all X-ray entries followed by that with respect to entries of similar resolution.

The Analysed column shows the number of residues for which the backbone conformation was analysed, and the total number of residues.

Mol	Chain	Analysed	Favoured	Allowed	Outliers	Percentiles
1	A	603/681 (88%)	580 (96%)	21 (4%)	2 (0%)	37 42
2	B	532/565 (94%)	508 (96%)	21 (4%)	3 (1%)	22 23
All	All	1135/1246 (91%)	1088 (96%)	42 (4%)	5 (0%)	30 34

All (5) Ramachandran outliers are listed below:

Mol	Chain	Res	Type
2	B	406	ILE
1	A	160	SER
2	B	246	MET
2	B	347	LYS
1	A	556	ILE

5.3.2 Protein sidechains [i](#)

In the following table, the Percentiles column shows the percent sidechain outliers of the chain as a percentile score with respect to all X-ray entries followed by that with respect to entries of similar resolution.

The Analysed column shows the number of residues for which the sidechain conformation was analysed, and the total number of residues.

Mol	Chain	Analysed	Rotameric	Outliers	Percentiles
1	A	534/597 (89%)	529 (99%)	5 (1%)	75 86
2	B	476/495 (96%)	473 (99%)	3 (1%)	84 91
All	All	1010/1092 (92%)	1002 (99%)	8 (1%)	79 88

All (8) residues with a non-rotameric sidechain are listed below:

Mol	Chain	Res	Type
1	A	57	ARG
1	A	298	PHE
1	A	438	TYR
1	A	451	LYS
1	A	501	ARG
2	B	347	LYS
2	B	514	ARG
2	B	517	ARG

Sometimes sidechains can be flipped to improve hydrogen bonding and reduce clashes. All (1) such sidechains are listed below:

Mol	Chain	Res	Type
1	A	558	GLN

5.3.3 RNA [i](#)

There are no RNA molecules in this entry.

5.4 Non-standard residues in protein, DNA, RNA chains [i](#)

There are no non-standard protein/DNA/RNA residues in this entry.

5.5 Carbohydrates [i](#)

2 monosaccharides are modelled in this entry.

In the following table, the Counts columns list the number of bonds (or angles) for which Mogul statistics could be retrieved, the number of bonds (or angles) that are observed in the model and the number of bonds (or angles) that are defined in the Chemical Component Dictionary. The Link column lists molecule types, if any, to which the group is linked. The Z score for a bond length (or angle) is the number of standard deviations the observed value is removed from the expected value. A bond length (or angle) with $|Z| > 2$ is considered an outlier worth inspection. RMSZ is the root-mean-square of all Z scores of the bond lengths (or angles).

Mol	Type	Chain	Res	Link	Bond lengths			Bond angles		
					Counts	RMSZ	# Z > 2	Counts	RMSZ	# Z > 2
3	NAG	C	1	2,3	14,14,15	0.53	0	17,19,21	0.88	1 (5%)
3	NAG	C	2	3	14,14,15	0.49	0	17,19,21	0.87	1 (5%)

In the following table, the Chirals column lists the number of chiral outliers, the number of chiral centers analysed, the number of these observed in the model and the number defined in the Chemical Component Dictionary. Similar counts are reported in the Torsion and Rings columns. '-' means no outliers of that kind were identified.

Mol	Type	Chain	Res	Link	Chirals	Torsions	Rings
3	NAG	C	1	2,3	-	0/6/23/26	0/1/1/1
3	NAG	C	2	3	-	0/6/23/26	0/1/1/1

There are no bond length outliers.

All (2) bond angle outliers are listed below:

Mol	Chain	Res	Type	Atoms	Z	Observed(°)	Ideal(°)
3	C	1	NAG	C1-O5-C5	2.72	115.83	112.19
3	C	2	NAG	C2-N2-C7	-2.45	119.62	122.90

There are no chirality outliers.

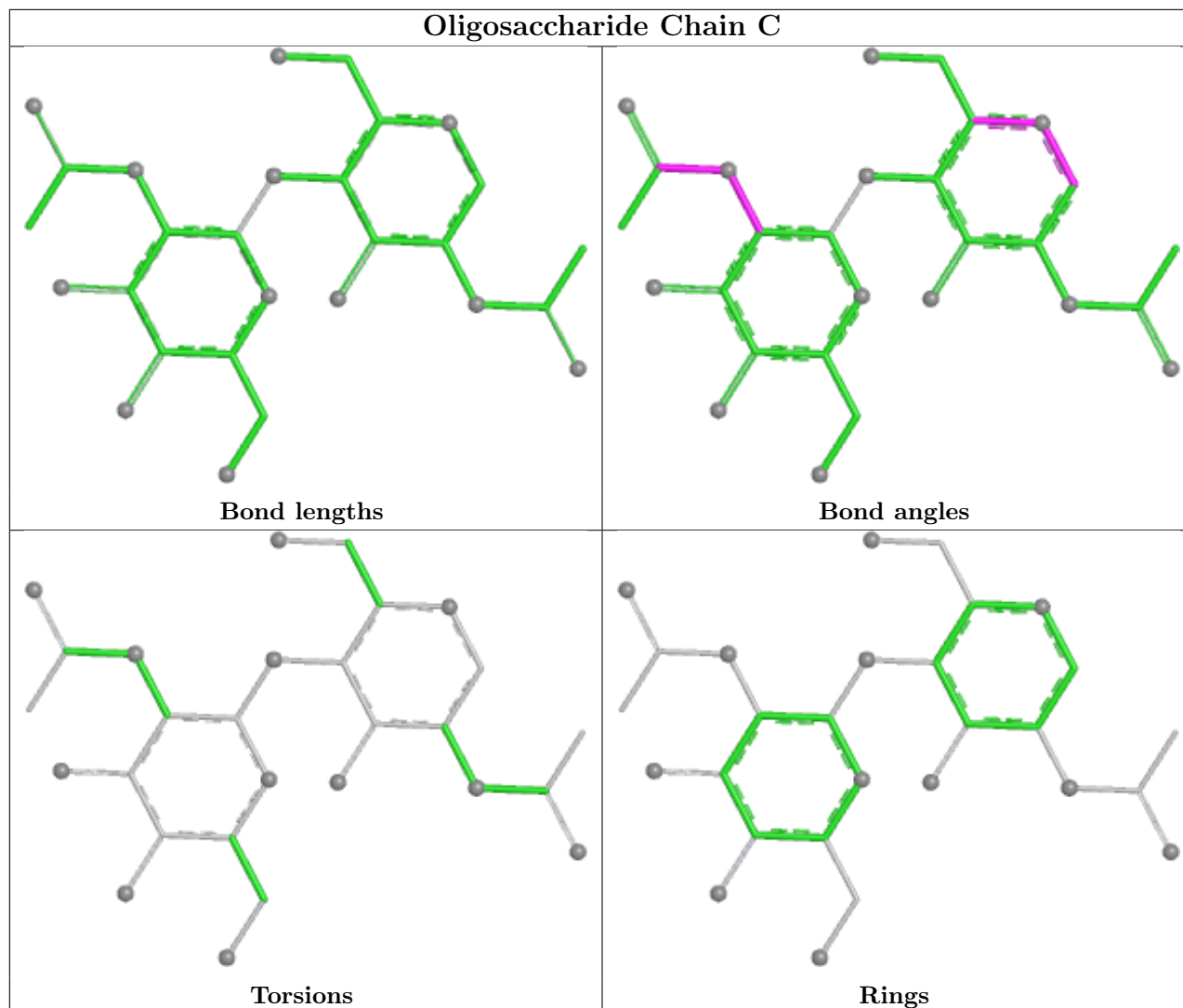
There are no torsion outliers.

There are no ring outliers.

No monomer is involved in short contacts.

The following is a two-dimensional graphical depiction of Mogul quality analysis of bond lengths,

bond angles, torsion angles, and ring geometry for oligosaccharide.



5.6 Ligand geometry [i](#)

11 ligands are modelled in this entry.

In the following table, the Counts columns list the number of bonds (or angles) for which Mogul statistics could be retrieved, the number of bonds (or angles) that are observed in the model and the number of bonds (or angles) that are defined in the Chemical Component Dictionary. The Link column lists molecule types, if any, to which the group is linked. The Z score for a bond length (or angle) is the number of standard deviations the observed value is removed from the expected value. A bond length (or angle) with $|Z| > 2$ is considered an outlier worth inspection. RMSZ is the root-mean-square of all Z scores of the bond lengths (or angles).

Mol	Type	Chain	Res	Link	Bond lengths			Bond angles		
					Counts	RMSZ	$\# Z > 2$	Counts	RMSZ	$\# Z > 2$
5	GOL	A	2003	-	5,5,5	0.37	0	5,5,5	0.31	0
5	GOL	B	2002	-	5,5,5	0.34	0	5,5,5	0.40	0

Mol	Type	Chain	Res	Link	Bond lengths			Bond angles		
					Counts	RMSZ	# Z > 2	Counts	RMSZ	# Z > 2
5	GOL	A	2001	-	5,5,5	0.52	0	5,5,5	0.31	0
5	GOL	B	2004	-	5,5,5	0.35	0	5,5,5	0.47	0
4	NAG	A	1076	1	14,14,15	0.45	0	17,19,21	1.11	1 (5%)
4	NAG	A	1327	1	14,14,15	0.61	0	17,19,21	1.04	0
4	NAG	B	1065	2	14,14,15	0.58	0	17,19,21	1.07	2 (11%)
4	NAG	B	1434	2	14,14,15	0.49	0	17,19,21	1.54	3 (17%)
5	GOL	A	2006	-	5,5,5	0.31	0	5,5,5	0.38	0
4	NAG	A	1163	1	14,14,15	0.52	0	17,19,21	0.70	0
4	NAG	A	1598	1	14,14,15	0.58	0	17,19,21	0.62	0

In the following table, the Chirals column lists the number of chiral outliers, the number of chiral centers analysed, the number of these observed in the model and the number defined in the Chemical Component Dictionary. Similar counts are reported in the Torsion and Rings columns. '-' means no outliers of that kind were identified.

Mol	Type	Chain	Res	Link	Chirals	Torsions	Rings
5	GOL	A	2003	-	-	3/4/4/4	-
5	GOL	B	2002	-	-	4/4/4/4	-
5	GOL	A	2001	-	-	4/4/4/4	-
5	GOL	B	2004	-	-	0/4/4/4	-
4	NAG	A	1076	1	-	4/6/23/26	0/1/1/1
4	NAG	A	1327	1	-	4/6/23/26	0/1/1/1
4	NAG	B	1065	2	-	2/6/23/26	0/1/1/1
4	NAG	B	1434	2	-	4/6/23/26	0/1/1/1
5	GOL	A	2006	-	-	2/4/4/4	-
4	NAG	A	1163	1	-	4/6/23/26	0/1/1/1
4	NAG	A	1598	1	-	4/6/23/26	0/1/1/1

There are no bond length outliers.

All (6) bond angle outliers are listed below:

Mol	Chain	Res	Type	Atoms	Z	Observed(°)	Ideal(°)
4	A	1076	NAG	C1-O5-C5	3.48	116.84	112.19
4	B	1434	NAG	C2-N2-C7	-3.25	118.54	122.90
4	B	1434	NAG	C4-C3-C2	-2.44	107.44	111.02
4	B	1065	NAG	C1-O5-C5	2.37	115.37	112.19
4	B	1065	NAG	O5-C1-C2	2.31	114.87	111.29
4	B	1434	NAG	O5-C5-C4	2.03	115.77	110.83

There are no chirality outliers.

All (35) torsion outliers are listed below:

Mol	Chain	Res	Type	Atoms
4	A	1076	NAG	C8-C7-N2-C2
4	A	1076	NAG	O7-C7-N2-C2
4	A	1163	NAG	C8-C7-N2-C2
4	A	1163	NAG	O7-C7-N2-C2
4	A	1327	NAG	C8-C7-N2-C2
4	A	1327	NAG	O7-C7-N2-C2
4	B	1065	NAG	C8-C7-N2-C2
4	B	1065	NAG	O7-C7-N2-C2
4	B	1434	NAG	C8-C7-N2-C2
4	B	1434	NAG	O7-C7-N2-C2
5	A	2001	GOL	O1-C1-C2-O2
5	A	2001	GOL	O1-C1-C2-C3
5	A	2001	GOL	C1-C2-C3-O3
5	A	2003	GOL	O1-C1-C2-C3
5	B	2002	GOL	O1-C1-C2-C3
5	B	2002	GOL	C1-C2-C3-O3
4	A	1076	NAG	O5-C5-C6-O6
4	A	1163	NAG	O5-C5-C6-O6
4	A	1163	NAG	C4-C5-C6-O6
4	A	1076	NAG	C4-C5-C6-O6
4	A	1598	NAG	C8-C7-N2-C2
4	A	1598	NAG	O7-C7-N2-C2
4	A	1327	NAG	O5-C5-C6-O6
4	B	1434	NAG	O5-C5-C6-O6
5	A	2006	GOL	O1-C1-C2-C3
5	A	2001	GOL	O2-C2-C3-O3
5	B	2002	GOL	O1-C1-C2-O2
5	B	2002	GOL	O2-C2-C3-O3
4	A	1598	NAG	O5-C5-C6-O6
5	A	2003	GOL	O1-C1-C2-O2
5	A	2006	GOL	O1-C1-C2-O2
4	A	1327	NAG	C4-C5-C6-O6
5	A	2003	GOL	O2-C2-C3-O3
4	A	1598	NAG	C4-C5-C6-O6
4	B	1434	NAG	C4-C5-C6-O6

There are no ring outliers.

5 monomers are involved in 14 short contacts:

Mol	Chain	Res	Type	Clashes	Symm-Clashes
5	B	2002	GOL	3	0
5	A	2001	GOL	2	0
5	B	2004	GOL	2	0
4	B	1434	NAG	1	0
5	A	2006	GOL	6	0

5.7 Other polymers [i](#)

There are no such residues in this entry.

5.8 Polymer linkage issues [i](#)

There are no chain breaks in this entry.

6 Fit of model and data

6.1 Protein, DNA and RNA chains

In the following table, the column labelled ‘#RSRZ > 2’ contains the number (and percentage) of RSRZ outliers, followed by percent RSRZ outliers for the chain as percentile scores relative to all X-ray entries and entries of similar resolution. The OWAB column contains the minimum, median, 95th percentile and maximum values of the occupancy-weighted average B-factor per residue. The column labelled ‘Q < 0.9’ lists the number of (and percentage) of residues with an average occupancy less than 0.9.

Mol	Chain	Analysed	<RSRZ>	#RSRZ>2	OWAB(Å ²)	Q<0.9
1	A	609/681 (89%)	0.03	31 (5%) 34 31	23, 44, 104, 141	0
2	B	540/565 (95%)	-0.02	32 (5%) 29 26	24, 41, 96, 166	0
All	All	1149/1246 (92%)	0.01	63 (5%) 32 28	23, 42, 102, 166	0

All (63) RSRZ outliers are listed below:

Mol	Chain	Res	Type	RSRZ
2	B	566	GLY	5.2
2	B	460	LEU	4.9
2	B	462	GLY	4.6
2	B	51	THR	4.0
2	B	551	LEU	3.8
2	B	568	CYS	3.6
1	A	466	GLY	3.4
1	A	631	PHE	3.3
2	B	563	ASP	3.2
2	B	454	ILE	3.2
2	B	319	TYR	3.1
1	A	657	SER	3.1
1	A	577	LEU	3.0
1	A	625	PRO	3.0
1	A	346	TYR	2.9
2	B	244	ASN	2.9
2	B	520	LYS	2.7
2	B	64	MET	2.7
1	A	565	HIS	2.7
2	B	52	GLN	2.7
2	B	561	ASN	2.6
2	B	545	LEU	2.6
1	A	48	TRP	2.6
1	A	461	ASP	2.6

Continued on next page...

Continued from previous page...

Mol	Chain	Res	Type	RSRZ
1	A	599	LEU	2.6
2	B	432	TYR	2.6
2	B	417	ARG	2.6
1	A	465	HIS	2.6
1	A	622	PRO	2.5
1	A	569	ILE	2.5
1	A	348	HIS	2.5
2	B	45	LYS	2.5
1	A	623	VAL	2.5
2	B	48	ARG	2.5
2	B	521	CYS	2.5
1	A	651	PHE	2.4
2	B	559	ARG	2.4
1	A	536	MET	2.4
1	A	633	LEU	2.4
1	A	347	HIS	2.4
1	A	547	TRP	2.4
1	A	656	CYS	2.3
2	B	519	GLY	2.3
1	A	274	LEU	2.3
2	B	461	ASN	2.3
2	B	453	ARG	2.3
1	A	630	TRP	2.3
1	A	578	LEU	2.3
2	B	558	GLU	2.3
2	B	560	GLY	2.3
1	A	571	VAL	2.2
2	B	47	GLY	2.2
1	A	628	GLN	2.2
2	B	552	THR	2.1
2	B	53	ARG	2.1
2	B	550	ARG	2.1
2	B	246	MET	2.1
2	B	562	THR	2.1
1	A	37	GLN	2.1
1	A	653	PHE	2.1
1	A	619	LYS	2.1
1	A	349	PRO	2.0
1	A	654	TYR	2.0

6.2 Non-standard residues in protein, DNA, RNA chains [i](#)

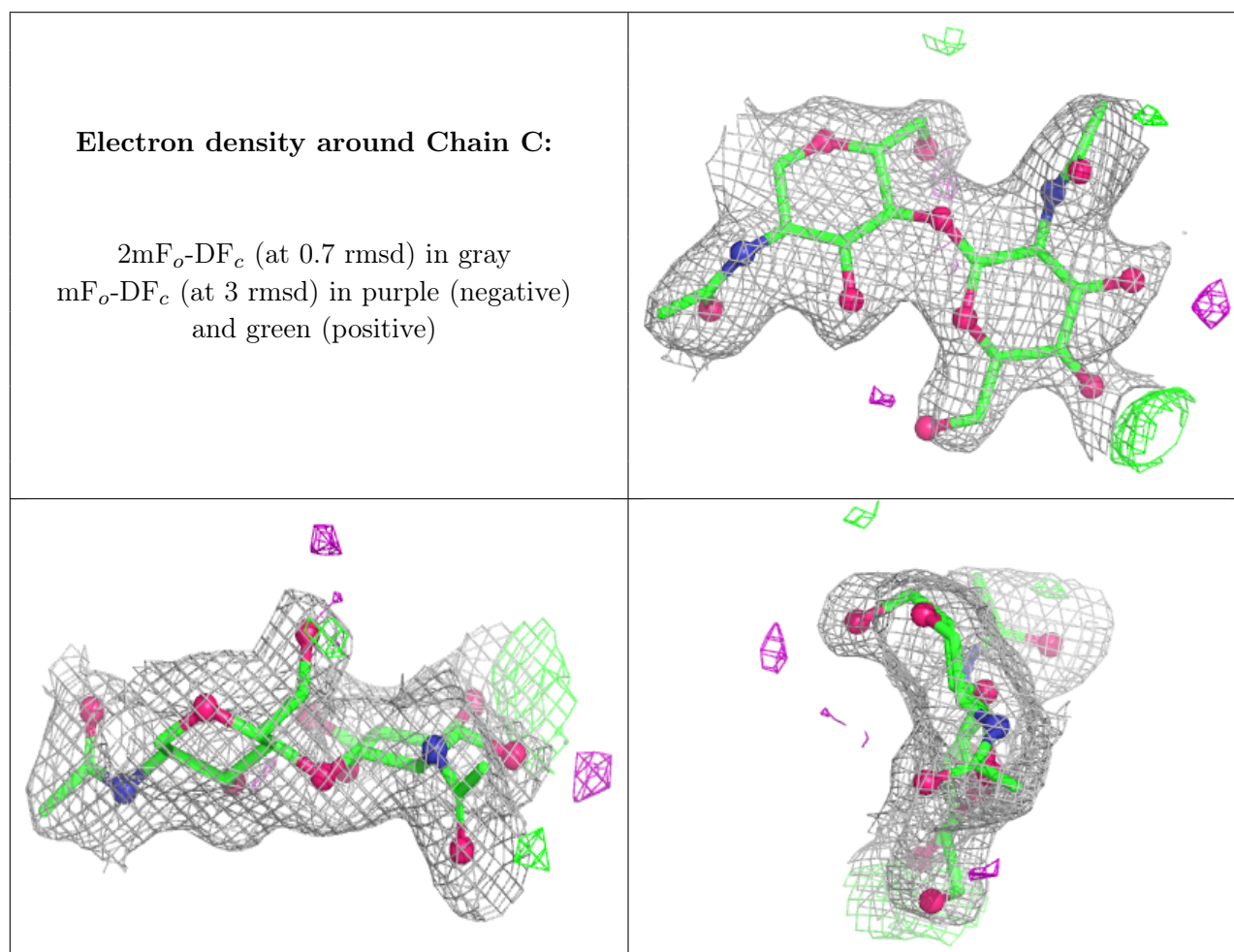
There are no non-standard protein/DNA/RNA residues in this entry.

6.3 Carbohydrates [i](#)

In the following table, the Atoms column lists the number of modelled atoms in the group and the number defined in the chemical component dictionary. The B-factors column lists the minimum, median, 95th percentile and maximum values of B factors of atoms in the group. The column labelled 'Q< 0.9' lists the number of atoms with occupancy less than 0.9.

Mol	Type	Chain	Res	Atoms	RSCC	RSR	B-factors(Å ²)	Q<0.9
3	NAG	C	2	14/15	0.90	0.12	40,60,72,73	0
3	NAG	C	1	14/15	0.96	0.07	33,39,50,51	0

The following is a graphical depiction of the model fit to experimental electron density for oligosaccharide. Each fit is shown from different orientation to approximate a three-dimensional view.



6.4 Ligands [i](#)

In the following table, the Atoms column lists the number of modelled atoms in the group and the number defined in the chemical component dictionary. The B-factors column lists the minimum, median, 95th percentile and maximum values of B factors of atoms in the group. The column labelled 'Q< 0.9' lists the number of atoms with occupancy less than 0.9.

Mol	Type	Chain	Res	Atoms	RSCC	RSR	B-factors(\AA^2)	Q<0.9
4	NAG	A	1598	14/15	0.45	0.16	120,134,140,143	0
4	NAG	A	1076	14/15	0.56	0.21	109,120,124,126	0
4	NAG	B	1434	14/15	0.58	0.18	92,107,115,119	0
4	NAG	A	1327	14/15	0.72	0.17	52,80,106,113	0
4	NAG	B	1065	14/15	0.73	0.15	102,110,114,115	0
4	NAG	A	1163	14/15	0.76	0.15	74,85,95,96	0
5	GOL	A	2006	6/6	0.80	0.17	68,73,74,81	0
5	GOL	A	2003	6/6	0.85	0.19	72,75,80,84	0
5	GOL	B	2004	6/6	0.92	0.12	63,71,75,77	0
5	GOL	B	2002	6/6	0.94	0.08	39,57,64,66	0
5	GOL	A	2001	6/6	0.95	0.17	32,40,50,56	0

6.5 Other polymers [i](#)

There are no such residues in this entry.