



Full wwPDB X-ray Structure Validation Report ⓘ

Nov 12, 2024 – 09:14 AM EST

PDB ID : 3OKT
Title : Mouse Plexin A2, extracellular domains 1-4
Authors : Janssen, B.J.C.; Robinson, R.A.; Bell, C.H.; Siebold, C.; Jones, E.Y.
Deposited on : 2010-08-25
Resolution : 2.30 Å(reported)

This is a Full wwPDB X-ray Structure Validation Report for a publicly released PDB entry.

We welcome your comments at validation@mail.wwpdb.org

A user guide is available at

<https://www.wwpdb.org/validation/2017/XrayValidationReportHelp>

with specific help available everywhere you see the ⓘ symbol.

The types of validation reports are described at

<http://www.wwpdb.org/validation/2017/FAQs#types>.

The following versions of software and data (see [references ⓘ](#)) were used in the production of this report:

MolProbity : 4.02b-467
Mogul : 2022.3.0, CSD as543be (2022)
Xtriage (Phenix) : 1.20.1
EDS : 3.0
Percentile statistics : 20231227.v01 (using entries in the PDB archive December 27th 2023)
CCP4 : 9.0.003 (Gargrove)
Density-Fitness : 1.0.11
Ideal geometry (proteins) : Engh & Huber (2001)
Ideal geometry (DNA, RNA) : Parkinson et al. (1996)
Validation Pipeline (wwPDB-VP) : 2.39

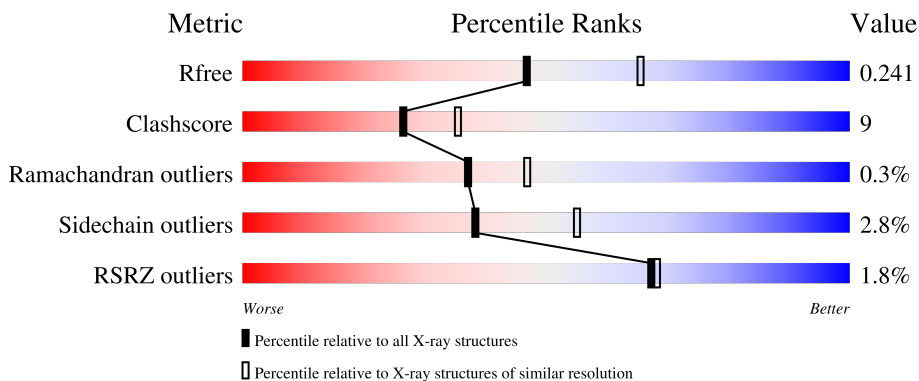
1 Overall quality at a glance

The following experimental techniques were used to determine the structure:

X-RAY DIFFRACTION

The reported resolution of this entry is 2.30 Å.

Percentile scores (ranging between 0-100) for global validation metrics of the entry are shown in the following graphic. The table shows the number of entries on which the scores are based.



Metric	Whole archive (#Entries)	Similar resolution (#Entries, resolution range(Å))
R_{free}	164625	5963 (2.30-2.30)
Clashscore	180529	6698 (2.30-2.30)
Ramachandran outliers	177936	6640 (2.30-2.30)
Sidechain outliers	177891	6640 (2.30-2.30)
RSRZ outliers	164620	5963 (2.30-2.30)

The table below summarises the geometric issues observed across the polymeric chains and their fit to the electron density. The red, orange, yellow and green segments of the lower bar indicate the fraction of residues that contain outliers for ≥ 3 , 2, 1 and 0 types of geometric quality criteria respectively. A grey segment represents the fraction of residues that are not modelled. The numeric value for each fraction is indicated below the corresponding segment, with a dot representing fractions $\leq 5\%$. The upper red bar (where present) indicates the fraction of residues that have poor fit to the electron density. The numeric value is given above the bar.

Mol	Chain	Length	Quality of chain
1	A	681	

The following table lists non-polymeric compounds, carbohydrate monomers and non-standard residues in protein, DNA, RNA chains that are outliers for geometric or electron-density-fit criteria:

Mol	Type	Chain	Res	Chirality	Geometry	Clashes	Electron density
5	GOL	A	2004	-	-	X	-

2 Entry composition

There are 6 unique types of molecules in this entry. The entry contains 5417 atoms, of which 0 are hydrogens and 0 are deuteriums.

In the tables below, the ZeroOcc column contains the number of atoms modelled with zero occupancy, the AltConf column contains the number of residues with at least one atom in alternate conformation and the Trace column contains the number of residues modelled with at most 2 atoms.

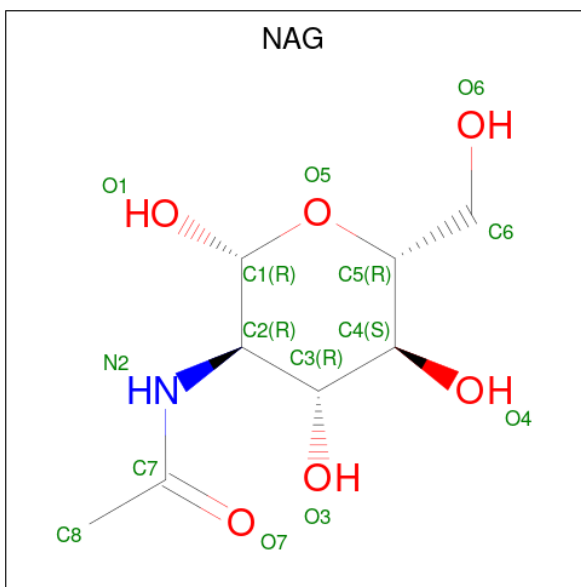
- Molecule 1 is a protein called Plexin-A2.

Mol	Chain	Residues	Atoms					ZeroOcc	AltConf	Trace
			Total	C	N	O	S			
1	A	656	5138	3255	876	972	35	0	0	0

There are 12 discrepancies between the modelled and reference sequences:

Chain	Residue	Modelled	Actual	Comment	Reference
A	32	GLU	-	expression tag	UNP P70207
A	33	THR	-	expression tag	UNP P70207
A	34	GLY	-	expression tag	UNP P70207
A	704	GLY	-	expression tag	UNP P70207
A	705	THR	-	expression tag	UNP P70207
A	706	LYS	-	expression tag	UNP P70207
A	707	HIS	-	expression tag	UNP P70207
A	708	HIS	-	expression tag	UNP P70207
A	709	HIS	-	expression tag	UNP P70207
A	710	HIS	-	expression tag	UNP P70207
A	711	HIS	-	expression tag	UNP P70207
A	712	HIS	-	expression tag	UNP P70207

- Molecule 2 is 2-acetamido-2-deoxy-beta-D-glucopyranose (three-letter code: NAG) (formula: C₈H₁₅NO₆).



Mol	Chain	Residues	Atoms				ZeroOcc	AltConf
2	A	1	Total	C	N	O	0	0
			14	8	1	5		
2	A	1	Total	C	N	O	0	0
			14	8	1	5		
2	A	1	Total	C	N	O	0	0
			14	8	1	5		
2	A	1	Total	C	N	O	0	0
			14	8	1	5		

- Molecule 3 is CHLORIDE ION (three-letter code: CL) (formula: Cl).

Mol	Chain	Residues	Atoms		ZeroOcc	AltConf
3	A	2	Total	Cl	0	0
			2	2		

- Molecule 4 is SODIUM ION (three-letter code: NA) (formula: Na).

Mol	Chain	Residues	Atoms		ZeroOcc	AltConf
4	A	1	Total	Na	0	0
			1	1		

- Molecule 5 is GLYCEROL (three-letter code: GOL) (formula: C₃H₈O₃).



Mol	Chain	Residues	Atoms		ZeroOcc	AltConf
5	A	1	Total	C O	0	0
			6	3 3		
5	A	1	Total	C O	0	0
			6	3 3		
5	A	1	Total	C O	0	0
			6	3 3		
5	A	1	Total	C O	0	0
			6	3 3		

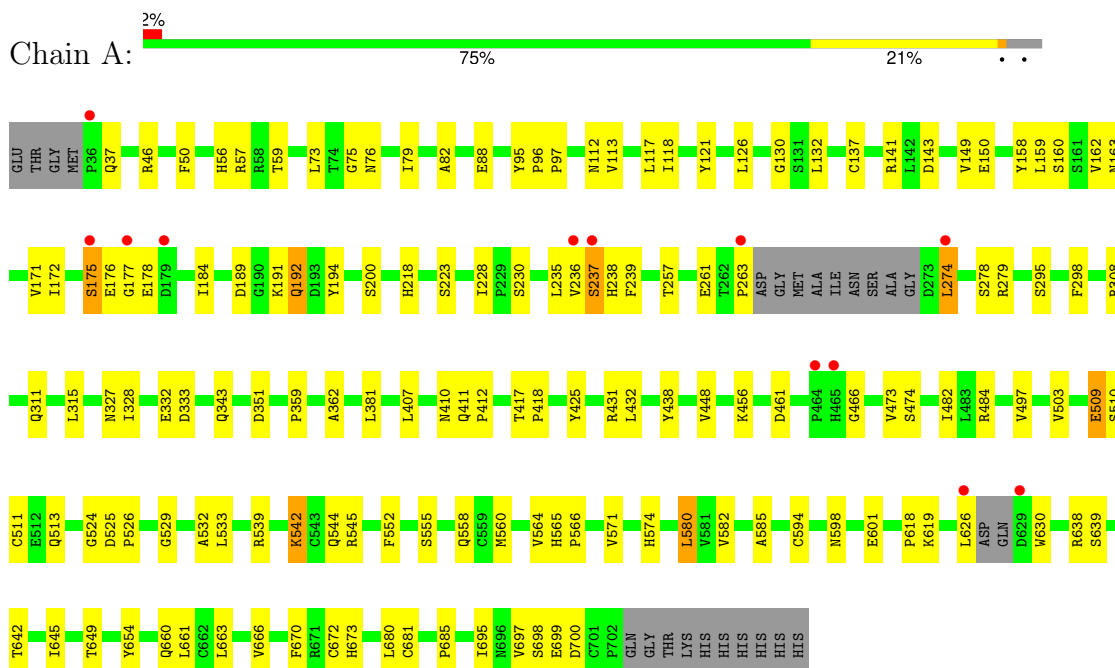
- Molecule 6 is water.

Mol	Chain	Residues	Atoms		ZeroOcc	AltConf
6	A	182	Total	O	0	0
			182	182		

3 Residue-property plots

These plots are drawn for all protein, RNA, DNA and oligosaccharide chains in the entry. The first graphic for a chain summarises the proportions of the various outlier classes displayed in the second graphic. The second graphic shows the sequence view annotated by issues in geometry and electron density. Residues are color-coded according to the number of geometric quality criteria for which they contain at least one outlier: green = 0, yellow = 1, orange = 2 and red = 3 or more. A red dot above a residue indicates a poor fit to the electron density ($RSRZ > 2$). Stretches of 2 or more consecutive residues without any outlier are shown as a green connector. Residues present in the sample, but not in the model, are shown in grey.

- Molecule 1: Plexin-A2



4 Data and refinement statistics

Property	Value	Source
Space group	C 1 2 1	Depositor
Cell constants a, b, c, α , β , γ	157.86Å 92.90Å 62.90Å 90.00° 102.87° 90.00°	Depositor
Resolution (Å)	44.91 – 2.30 44.91 – 2.30	Depositor EDS
% Data completeness (in resolution range)	97.3 (44.91-2.30) 97.3 (44.91-2.30)	Depositor EDS
R_{merge}	(Not available)	Depositor
R_{sym}	(Not available)	Depositor
$\langle I/\sigma(I) \rangle$ ¹	1.85 (at 2.29Å)	Xtrriage
Refinement program	PHENIX (phenix.refine: 1.6_289)	Depositor
R, R_{free}	0.196 , 0.251 0.189 , 0.241	Depositor DCC
R_{free} test set	1941 reflections (5.03%)	wwPDB-VP
Wilson B-factor (Å ²)	33.1	Xtrriage
Anisotropy	0.100	Xtrriage
Bulk solvent k_{sol} (e/Å ³), B_{sol} (Å ²)	0.36 , 46.6	EDS
L-test for twinning ²	$\langle L \rangle = 0.48$, $\langle L^2 \rangle = 0.32$	Xtrriage
Estimated twinning fraction	No twinning to report.	Xtrriage
F_o, F_c correlation	0.95	EDS
Total number of atoms	5417	wwPDB-VP
Average B, all atoms (Å ²)	41.0	wwPDB-VP

Xtrriage's analysis on translational NCS is as follows: *The largest off-origin peak in the Patterson function is 6.14% of the height of the origin peak. No significant pseudotranslation is detected.*

¹Intensities estimated from amplitudes.

²Theoretical values of $\langle |L| \rangle$, $\langle L^2 \rangle$ for acentric reflections are 0.5, 0.333 respectively for untwinned datasets, and 0.375, 0.2 for perfectly twinned datasets.

5 Model quality [i](#)

5.1 Standard geometry [i](#)

Bond lengths and bond angles in the following residue types are not validated in this section: NA, NAG, GOL, CL

The Z score for a bond length (or angle) is the number of standard deviations the observed value is removed from the expected value. A bond length (or angle) with $|Z| > 5$ is considered an outlier worth inspection. RMSZ is the root-mean-square of all Z scores of the bond lengths (or angles).

Mol	Chain	Bond lengths		Bond angles	
		RMSZ	# Z >5	RMSZ	# Z >5
1	A	0.30	0/5261	0.48	0/7141

There are no bond length outliers.

There are no bond angle outliers.

There are no chirality outliers.

There are no planarity outliers.

5.2 Too-close contacts [i](#)

In the following table, the Non-H and H(model) columns list the number of non-hydrogen atoms and hydrogen atoms in the chain respectively. The H(added) column lists the number of hydrogen atoms added and optimized by MolProbity. The Clashes column lists the number of clashes within the asymmetric unit, whereas Symm-Clashes lists symmetry-related clashes.

Mol	Chain	Non-H	H(model)	H(added)	Clashes	Symm-Clashes
1	A	5138	0	4990	94	0
2	A	70	0	65	7	0
3	A	2	0	0	0	0
4	A	1	0	0	0	0
5	A	24	0	32	7	0
6	A	182	0	0	0	0
All	All	5417	0	5087	95	0

The all-atom clashscore is defined as the number of clashes found per 1000 atoms (including hydrogen atoms). The all-atom clashscore for this structure is 9.

All (95) close contacts within the same asymmetric unit are listed below, sorted by their clash magnitude.

Atom-1	Atom-2	Interatomic distance (Å)	Clash overlap (Å)
1:A:171:VAL:HA	5:A:2004:GOL:H12	1.55	0.88
1:A:237:SER:HA	1:A:239:PHE:H	1.39	0.87
1:A:76:ASN:H	2:A:1076:NAG:H82	1.40	0.87
1:A:697:VAL:HG12	1:A:699:GLU:H	1.50	0.76
1:A:524:GLY:HA2	5:A:2007:GOL:H2	1.68	0.75
1:A:532:ALA:HB1	1:A:560:MET:CE	2.17	0.74
1:A:564:VAL:HG22	1:A:580:LEU:HD13	1.74	0.69
1:A:274:LEU:H	1:A:274:LEU:HD12	1.58	0.68
1:A:532:ALA:HB1	1:A:560:MET:HE3	1.75	0.68
1:A:666:VAL:HG11	1:A:698:SER:N	2.09	0.68
1:A:118:ILE:CG2	5:A:2004:GOL:H31	2.25	0.67
1:A:461:ASP:O	1:A:466:GLY:O	2.14	0.65
1:A:425:TYR:OH	1:A:456:LYS:HE2	1.97	0.64
1:A:544:GLN:HG2	1:A:545:ARG:HG2	1.79	0.64
1:A:175:SER:OG	1:A:178:GLU:HG2	1.97	0.64
1:A:237:SER:HA	1:A:239:PHE:N	2.13	0.63
1:A:76:ASN:H	2:A:1076:NAG:C8	2.12	0.60
1:A:172:ILE:HB	5:A:2004:GOL:H32	1.83	0.59
1:A:97:PRO:HG2	1:A:158:TYR:CE1	2.37	0.59
1:A:407:LEU:O	1:A:411:GLN:HG2	2.04	0.58
1:A:574:HIS:ND1	1:A:618:PRO:HD3	2.19	0.57
1:A:118:ILE:HA	5:A:2005:GOL:H32	1.85	0.57
1:A:191:LYS:HB3	1:A:194:TYR:HB2	1.87	0.57
1:A:79:ILE:HD11	1:A:82:ALA:HB2	1.85	0.57
1:A:663:LEU:HD23	1:A:698:SER:HB2	1.88	0.55
1:A:163:ASN:HD22	2:A:1163:NAG:H83	1.72	0.54
1:A:529:GLY:HA3	1:A:552:PHE:CZ	2.43	0.54
1:A:118:ILE:CG2	5:A:2004:GOL:H11	2.38	0.54
1:A:274:LEU:HD12	1:A:274:LEU:N	2.25	0.52
1:A:510:SER:HB3	1:A:513:GLN:HE21	1.74	0.52
1:A:235:LEU:HG	1:A:236:VAL:HG23	1.90	0.52
1:A:57:ARG:HG2	1:A:121:TYR:CE2	2.44	0.52
1:A:351:ASP:HA	1:A:431:ARG:HB2	1.92	0.52
1:A:660:GLN:C	1:A:661:LEU:HD12	2.30	0.52
1:A:95:TYR:HA	1:A:96:PRO:C	2.31	0.51
1:A:308:ARG:HB2	1:A:343:GLN:HG2	1.92	0.51
1:A:137:CYS:SG	1:A:159:LEU:HD11	2.52	0.50
1:A:638:ARG:HB2	1:A:645:ILE:HD13	1.94	0.50
1:A:118:ILE:HG21	5:A:2004:GOL:H11	1.94	0.50
1:A:50:PHE:CE2	1:A:503:VAL:HG23	2.47	0.50
1:A:235:LEU:HD21	1:A:263:PRO:HG2	1.94	0.50
1:A:37:GLN:NE2	1:A:37:GLN:HA	2.26	0.50

Continued on next page...

Continued from previous page...

Atom-1	Atom-2	Interatomic distance (Å)	Clash overlap (Å)
1:A:56:HIS:HB3	1:A:59:THR:OG1	2.12	0.50
1:A:191:LYS:HD2	1:A:191:LYS:N	2.26	0.50
1:A:176:GLU:HG3	1:A:177:GLY:N	2.27	0.49
1:A:112:ASN:HB2	1:A:132:LEU:HD22	1.95	0.49
1:A:555:SER:HB3	1:A:558:GLN:OE1	2.12	0.49
1:A:327:ASN:O	1:A:327:ASN:CG	2.52	0.48
1:A:663:LEU:CD2	1:A:698:SER:HB2	2.43	0.48
1:A:141:ARG:HD2	1:A:143:ASP:OD1	2.15	0.47
1:A:162:VAL:CG2	1:A:189:ASP:HB2	2.45	0.47
1:A:574:HIS:CE1	1:A:618:PRO:HD3	2.50	0.47
1:A:672:CYS:HB3	1:A:681:CYS:SG	2.53	0.47
1:A:630:TRP:HB3	1:A:670:PHE:CE2	2.50	0.47
1:A:88:GLU:HB2	1:A:132:LEU:HD21	1.97	0.47
1:A:238:HIS:N	1:A:238:HIS:CD2	2.82	0.47
1:A:564:VAL:HG23	1:A:649:THR:HG21	1.97	0.46
1:A:73:LEU:HD23	1:A:79:ILE:HA	1.98	0.46
1:A:192:GLN:HG3	1:A:228:ILE:O	2.16	0.46
1:A:594:CYS:O	1:A:601:GLU:HA	2.15	0.46
1:A:695:ILE:HG23	1:A:700:ASP:OD1	2.16	0.45
1:A:571:VAL:HG22	1:A:654:TYR:O	2.16	0.45
1:A:381:LEU:HD21	1:A:410:ASN:HA	1.99	0.44
1:A:661:LEU:HD12	1:A:661:LEU:N	2.33	0.44
1:A:328:ILE:HB	1:A:332:GLU:OE1	2.17	0.44
1:A:257:THR:O	1:A:278:SER:HA	2.18	0.43
1:A:509:GLU:HG3	1:A:511:CYS:SG	2.58	0.43
1:A:359:PRO:HG2	1:A:362:ALA:CB	2.48	0.43
1:A:533:LEU:HB3	1:A:642:THR:HG21	2.01	0.43
1:A:565:HIS:HA	1:A:566:PRO:HA	1.86	0.43
1:A:359:PRO:HG2	1:A:362:ALA:HB3	2.01	0.43
1:A:695:ILE:HD13	1:A:700:ASP:O	2.18	0.43
1:A:175:SER:HG	1:A:178:GLU:HG2	1.83	0.43
1:A:315:LEU:HD11	1:A:333:ASP:HB3	2.01	0.42
1:A:525:ASP:HA	1:A:526:PRO:HD3	1.87	0.42
1:A:539:ARG:HB2	1:A:542:LYS:HD3	2.01	0.42
1:A:417:THR:HA	1:A:418:PRO:HD3	1.72	0.42
1:A:432:LEU:HD22	1:A:448:VAL:HG11	2.02	0.42
2:A:1655:NAG:H82	2:A:1655:NAG:H2	1.86	0.42
1:A:117:LEU:HD11	1:A:126:LEU:HD21	2.02	0.42
1:A:279:ARG:HD3	1:A:295:SER:OG	2.20	0.42
1:A:46:ARG:O	1:A:46:ARG:HG2	2.19	0.42
1:A:75:GLY:N	2:A:1076:NAG:H81	2.34	0.42

Continued on next page...

Continued from previous page...

Atom-1	Atom-2	Interatomic distance (Å)	Clash overlap (Å)
1:A:149:VAL:HG22	1:A:150:GLU:N	2.34	0.41
1:A:673:HIS:CD2	1:A:685:PRO:HG3	2.55	0.41
1:A:482:ILE:HG23	1:A:497:VAL:HG13	2.02	0.41
1:A:76:ASN:N	2:A:1076:NAG:C8	2.83	0.41
1:A:598:ASN:ND2	2:A:1598:NAG:H83	2.36	0.41
1:A:619:LYS:HA	1:A:619:LYS:HD3	1.87	0.41
1:A:311:GLN:O	1:A:484:ARG:NH1	2.52	0.40
1:A:533:LEU:HD22	1:A:639:SER:HB2	2.03	0.40
1:A:113:VAL:O	1:A:130:GLY:HA2	2.21	0.40
1:A:218:HIS:HA	1:A:223:SER:OG	2.21	0.40
1:A:411:GLN:HA	1:A:412:PRO:C	2.42	0.40
1:A:582:VAL:CG1	1:A:585:ALA:HB2	2.52	0.40

There are no symmetry-related clashes.

5.3 Torsion angles [i](#)

5.3.1 Protein backbone [i](#)

In the following table, the Percentiles column shows the percent Ramachandran outliers of the chain as a percentile score with respect to all X-ray entries followed by that with respect to entries of similar resolution.

The Analysed column shows the number of residues for which the backbone conformation was analysed, and the total number of residues.

Mol	Chain	Analysed	Favoured	Allowed	Outliers	Percentiles
1	A	650/681 (95%)	635 (98%)	13 (2%)	2 (0%)	37 47

All (2) Ramachandran outliers are listed below:

Mol	Chain	Res	Type
1	A	160	SER
1	A	175	SER

5.3.2 Protein sidechains [i](#)

In the following table, the Percentiles column shows the percent sidechain outliers of the chain as a percentile score with respect to all X-ray entries followed by that with respect to entries of similar resolution.

The Analysed column shows the number of residues for which the sidechain conformation was analysed, and the total number of residues.

Mol	Chain	Analysed	Rotameric	Outliers	Percentiles
1	A	578/597 (97%)	562 (97%)	16 (3%)	38 55

All (16) residues with a non-rotameric sidechain are listed below:

Mol	Chain	Res	Type
1	A	184	ILE
1	A	192	GLN
1	A	200	SER
1	A	230	SER
1	A	237	SER
1	A	261	GLU
1	A	274	LEU
1	A	298	PHE
1	A	438	TYR
1	A	473	VAL
1	A	474	SER
1	A	509	GLU
1	A	542	LYS
1	A	580	LEU
1	A	626	LEU
1	A	680	LEU

Sometimes sidechains can be flipped to improve hydrogen bonding and reduce clashes. All (4) such sidechains are listed below:

Mol	Chain	Res	Type
1	A	37	GLN
1	A	101	GLN
1	A	238	HIS
1	A	513	GLN

5.3.3 RNA [i](#)

There are no RNA molecules in this entry.

5.4 Non-standard residues in protein, DNA, RNA chains [i](#)

There are no non-standard protein/DNA/RNA residues in this entry.

5.5 Carbohydrates [i](#)

There are no oligosaccharides in this entry.

5.6 Ligand geometry [i](#)

Of 12 ligands modelled in this entry, 3 are monoatomic - leaving 9 for Mogul analysis.

In the following table, the Counts columns list the number of bonds (or angles) for which Mogul statistics could be retrieved, the number of bonds (or angles) that are observed in the model and the number of bonds (or angles) that are defined in the Chemical Component Dictionary. The Link column lists molecule types, if any, to which the group is linked. The Z score for a bond length (or angle) is the number of standard deviations the observed value is removed from the expected value. A bond length (or angle) with $|Z| > 2$ is considered an outlier worth inspection. RMSZ is the root-mean-square of all Z scores of the bond lengths (or angles).

Mol	Type	Chain	Res	Link	Bond lengths			Bond angles		
					Counts	RMSZ	# Z > 2	Counts	RMSZ	# Z > 2
5	GOL	A	2006	-	5,5,5	0.39	0	5,5,5	0.23	0
5	GOL	A	2004	-	5,5,5	0.41	0	5,5,5	0.27	0
2	NAG	A	1076	1	14,14,15	0.38	0	17,19,21	1.82	2 (11%)
5	GOL	A	2005	-	5,5,5	0.42	0	5,5,5	0.34	0
2	NAG	A	1163	1	14,14,15	0.42	0	17,19,21	1.19	1 (5%)
2	NAG	A	1327	1	14,14,15	0.46	0	17,19,21	1.66	2 (11%)
2	NAG	A	1598	1	14,14,15	0.50	0	17,19,21	0.95	1 (5%)
2	NAG	A	1655	1	14,14,15	0.40	0	17,19,21	1.38	2 (11%)
5	GOL	A	2007	-	5,5,5	0.30	0	5,5,5	0.47	0

In the following table, the Chirals column lists the number of chiral outliers, the number of chiral centers analysed, the number of these observed in the model and the number defined in the Chemical Component Dictionary. Similar counts are reported in the Torsion and Rings columns. '-' means no outliers of that kind were identified.

Mol	Type	Chain	Res	Link	Chirals	Torsions	Rings
5	GOL	A	2006	-	-	4/4/4/4	-
5	GOL	A	2004	-	-	4/4/4/4	-
2	NAG	A	1076	1	-	4/6/23/26	0/1/1/1
5	GOL	A	2005	-	-	4/4/4/4	-
2	NAG	A	1163	1	-	3/6/23/26	0/1/1/1
2	NAG	A	1327	1	-	3/6/23/26	0/1/1/1
2	NAG	A	1598	1	-	2/6/23/26	0/1/1/1
2	NAG	A	1655	1	-	2/6/23/26	0/1/1/1

Continued on next page...

Continued from previous page...

Mol	Type	Chain	Res	Link	Chirals	Torsions	Rings
5	GOL	A	2007	-	-	4/4/4/4	-

There are no bond length outliers.

All (8) bond angle outliers are listed below:

Mol	Chain	Res	Type	Atoms	Z	Observed(°)	Ideal(°)
2	A	1076	NAG	C1-O5-C5	6.40	120.76	112.19
2	A	1327	NAG	C1-O5-C5	5.63	119.74	112.19
2	A	1163	NAG	C1-O5-C5	3.52	116.90	112.19
2	A	1655	NAG	C1-O5-C5	3.21	116.49	112.19
2	A	1598	NAG	C1-O5-C5	3.19	116.47	112.19
2	A	1327	NAG	O5-C1-C2	2.89	115.76	111.29
2	A	1655	NAG	C4-C3-C2	-2.45	107.43	111.02
2	A	1076	NAG	O5-C1-C2	2.28	114.83	111.29

There are no chirality outliers.

All (30) torsion outliers are listed below:

Mol	Chain	Res	Type	Atoms
2	A	1076	NAG	C8-C7-N2-C2
2	A	1076	NAG	O7-C7-N2-C2
2	A	1163	NAG	C8-C7-N2-C2
2	A	1163	NAG	O7-C7-N2-C2
2	A	1327	NAG	C3-C2-N2-C7
2	A	1327	NAG	C8-C7-N2-C2
2	A	1327	NAG	O7-C7-N2-C2
2	A	1655	NAG	C8-C7-N2-C2
2	A	1655	NAG	O7-C7-N2-C2
5	A	2004	GOL	O1-C1-C2-C3
5	A	2004	GOL	C1-C2-C3-O3
5	A	2004	GOL	O2-C2-C3-O3
5	A	2005	GOL	O1-C1-C2-C3
5	A	2005	GOL	C1-C2-C3-O3
5	A	2006	GOL	O1-C1-C2-C3
5	A	2007	GOL	O1-C1-C2-O2
5	A	2007	GOL	O1-C1-C2-C3
5	A	2007	GOL	C1-C2-C3-O3
2	A	1598	NAG	C8-C7-N2-C2
2	A	1598	NAG	O7-C7-N2-C2
5	A	2006	GOL	O1-C1-C2-O2
2	A	1076	NAG	O5-C5-C6-O6

Continued on next page...

Continued from previous page...

Mol	Chain	Res	Type	Atoms
5	A	2006	GOL	C1-C2-C3-O3
5	A	2004	GOL	O1-C1-C2-O2
5	A	2005	GOL	O1-C1-C2-O2
5	A	2005	GOL	O2-C2-C3-O3
2	A	1163	NAG	O5-C5-C6-O6
5	A	2007	GOL	O2-C2-C3-O3
2	A	1076	NAG	C4-C5-C6-O6
5	A	2006	GOL	O2-C2-C3-O3

There are no ring outliers.

7 monomers are involved in 14 short contacts:

Mol	Chain	Res	Type	Clashes	Symm-Clashes
5	A	2004	GOL	5	0
2	A	1076	NAG	4	0
5	A	2005	GOL	1	0
2	A	1163	NAG	1	0
2	A	1598	NAG	1	0
2	A	1655	NAG	1	0
5	A	2007	GOL	1	0

5.7 Other polymers [i](#)

There are no such residues in this entry.

5.8 Polymer linkage issues [i](#)

There are no chain breaks in this entry.

6 Fit of model and data [i](#)

6.1 Protein, DNA and RNA chains [i](#)

In the following table, the column labelled ‘#RSRZ> 2’ contains the number (and percentage) of RSRZ outliers, followed by percent RSRZ outliers for the chain as percentile scores relative to all X-ray entries and entries of similar resolution. The OWAB column contains the minimum, median, 95th percentile and maximum values of the occupancy-weighted average B-factor per residue. The column labelled ‘Q< 0.9’ lists the number of (and percentage) of residues with an average occupancy less than 0.9.

Mol	Chain	Analysed	<RSRZ>	#RSRZ>2	OWAB(Å ²)	Q<0.9
1	A	656/681 (96%)	-0.29	12 (1%) 67 68	19, 37, 69, 105	0

All (12) RSRZ outliers are listed below:

Mol	Chain	Res	Type	RSRZ
1	A	36	PRO	4.5
1	A	626	LEU	3.7
1	A	263	PRO	3.6
1	A	465	HIS	3.0
1	A	629	ASP	2.8
1	A	237	SER	2.7
1	A	274	LEU	2.6
1	A	175	SER	2.3
1	A	464	PRO	2.2
1	A	179	ASP	2.2
1	A	236	VAL	2.1
1	A	177	GLY	2.1

6.2 Non-standard residues in protein, DNA, RNA chains [i](#)

There are no non-standard protein/DNA/RNA residues in this entry.

6.3 Carbohydrates [i](#)

There are no monosaccharides in this entry.

6.4 Ligands [i](#)

In the following table, the Atoms column lists the number of modelled atoms in the group and the number defined in the chemical component dictionary. The B-factors column lists the minimum,

median, 95th percentile and maximum values of B factors of atoms in the group. The column labelled 'Q< 0.9' lists the number of atoms with occupancy less than 0.9.

Mol	Type	Chain	Res	Atoms	RSCC	RSR	B-factors(Å ²)	Q<0.9
2	NAG	A	1598	14/15	0.28	0.19	112,118,123,123	0
2	NAG	A	1327	14/15	0.59	0.16	107,119,122,123	0
4	NA	A	2003	1/1	0.75	0.34	52,52,52,52	0
2	NAG	A	1655	14/15	0.79	0.17	81,86,89,90	0
2	NAG	A	1163	14/15	0.79	0.15	56,59,78,84	0
2	NAG	A	1076	14/15	0.82	0.13	58,68,72,73	0
5	GOL	A	2005	6/6	0.85	0.15	46,52,53,54	0
5	GOL	A	2006	6/6	0.85	0.19	74,76,80,81	0
5	GOL	A	2004	6/6	0.91	0.17	37,46,48,55	0
5	GOL	A	2007	6/6	0.91	0.11	54,56,58,60	0
3	CL	A	2002	1/1	0.92	0.11	66,66,66,66	0
3	CL	A	2001	1/1	0.98	0.05	41,41,41,41	0

6.5 Other polymers [i](#)

There are no such residues in this entry.