



Full wwPDB X-ray Structure Validation Report ⓘ

May 3, 2025 – 11:57 AM EDT

PDB ID : 3N1N / pdb_00003n1n
Title : Crystal structure of the complex of type I ribosome inactivating protein with guanine at 2.2Å resolution
Authors : Kushwaha, G.S.; Singh, N.; Sinha, M.; Kaur, P.; Betzel, C.; Sharma, S.; Singh, T.P.
Deposited on : 2010-05-16
Resolution : 2.23 Å(reported)

This is a Full wwPDB X-ray Structure Validation Report for a publicly released PDB entry.

We welcome your comments at validation@mail.wwpdb.org

A user guide is available at

<https://www.wwpdb.org/validation/2017/XrayValidationReportHelp>

with specific help available everywhere you see the ⓘ symbol.

The types of validation reports are described at

<http://www.wwpdb.org/validation/2017/FAQs#types>.

The following versions of software and data (see [references ⓘ](#)) were used in the production of this report:

MolProbity : 4-5-2 with Phenix2.0rc1
Mogul : 2022.3.0, CSD as543be (2022)
Xtriage (Phenix) : 2.0rc1
EDS : 3.0
Percentile statistics : 20231227.v01 (using entries in the PDB archive December 27th 2023)
CCP4 : 9.0.006 (Gargrove)
Density-Fitness : 1.0.12
Ideal geometry (proteins) : Engh & Huber (2001)
Ideal geometry (DNA, RNA) : Parkinson et al. (1996)
Validation Pipeline (wwPDB-VP) : 2.43.1

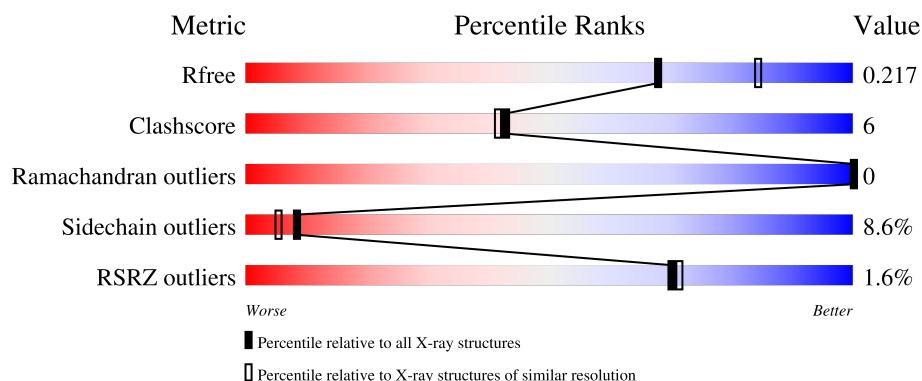
1 Overall quality at a glance

The following experimental techniques were used to determine the structure:

X-RAY DIFFRACTION


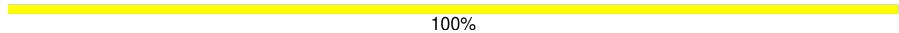
The reported resolution of this entry is 2.23 Å.

Percentile scores (ranging between 0-100) for global validation metrics of the entry are shown in the following graphic. The table shows the number of entries on which the scores are based.



Metric	Whole archive (#Entries)	Similar resolution (#Entries, resolution range(Å))
R_{free}	164625	3139 (2.26-2.22)
Clashscore	180529	3381 (2.26-2.22)
Ramachandran outliers	177936	3334 (2.26-2.22)
Sidechain outliers	177891	3335 (2.26-2.22)
RSRZ outliers	164620	3138 (2.26-2.22)

The table below summarises the geometric issues observed across the polymeric chains and their fit to the electron density. The red, orange, yellow and green segments of the lower bar indicate the fraction of residues that contain outliers for ≥ 3 , 2, 1 and 0 types of geometric quality criteria respectively. A grey segment represents the fraction of residues that are not modelled. The numeric value for each fraction is indicated below the corresponding segment, with a dot representing fractions $\leq 5\%$. The upper red bar (where present) indicates the fraction of residues that have poor fit to the electron density. The numeric value is given above the bar.

Mol	Chain	Length	Quality of chain
1	A	246	 2% 78% 20%
2	B	2	 100%

2 Entry composition [i](#)

There are 4 unique types of molecules in this entry. The entry contains 2203 atoms, of which 0 are hydrogens and 0 are deuteriums.

In the tables below, the ZeroOcc column contains the number of atoms modelled with zero occupancy, the AltConf column contains the number of residues with at least one atom in alternate conformation and the Trace column contains the number of residues modelled with at most 2 atoms.

- Molecule 1 is a protein called Ribosome inactivating protein.

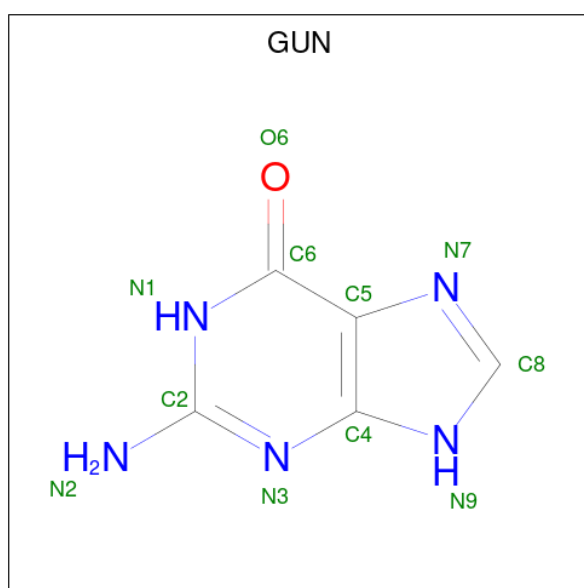
Mol	Chain	Residues	Atoms					ZeroOcc	AltConf	Trace
1	A	246	Total	C	N	O	S	0	0	0
			1911	1215	328	365	3			

- Molecule 2 is an oligosaccharide called 2-acetamido-2-deoxy-beta-D-glucopyranose-(1-4)-2-acetamido-2-deoxy-beta-D-glucopyranose.



Mol	Chain	Residues	Atoms				ZeroOcc	AltConf	Trace
2	B	2	Total	C	N	O	0	0	0
			28	16	2	10			

- Molecule 3 is GUANINE (CCD ID: GUN) (formula: C₅H₅N₅O).



Mol	Chain	Residues	Atoms				ZeroOcc	AltConf
3	A	1	Total	C	N	O	0	0
			11	5	5	1		

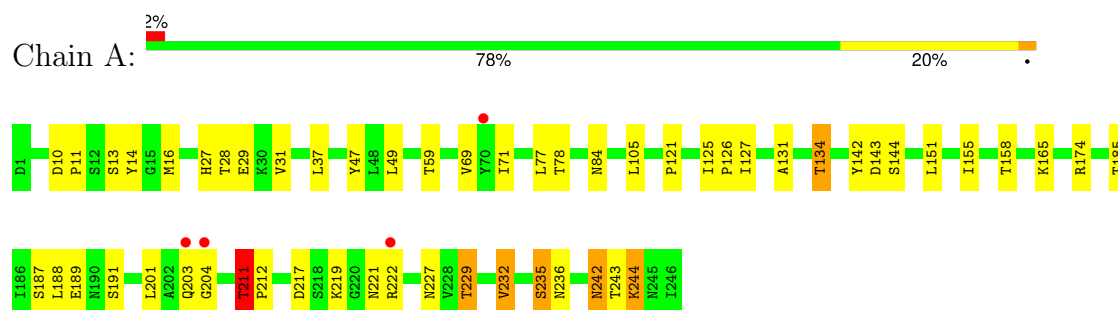
- Molecule 4 is water.

Mol	Chain	Residues	Atoms		ZeroOcc	AltConf
4	A	253	Total	O	0	0
			253	253		

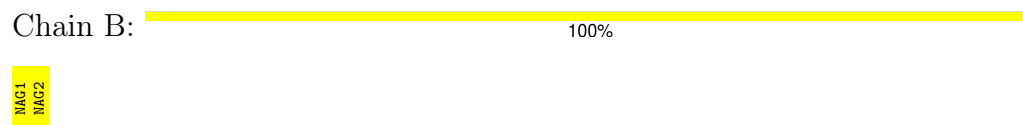
3 Residue-property plots

These plots are drawn for all protein, RNA, DNA and oligosaccharide chains in the entry. The first graphic for a chain summarises the proportions of the various outlier classes displayed in the second graphic. The second graphic shows the sequence view annotated by issues in geometry and electron density. Residues are color-coded according to the number of geometric quality criteria for which they contain at least one outlier: green = 0, yellow = 1, orange = 2 and red = 3 or more. A red dot above a residue indicates a poor fit to the electron density ($RSRZ > 2$). Stretches of 2 or more consecutive residues without any outlier are shown as a green connector. Residues present in the sample, but not in the model, are shown in grey.

- Molecule 1: Ribosome inactivating protein



- Molecule 2: 2-acetamido-2-deoxy-beta-D-glucopyranose-(1-4)-2-acetamido-2-deoxy-beta-D-glucopyranose



4 Data and refinement statistics

Property	Value	Source
Space group	H 3	Depositor
Cell constants a, b, c, α , β , γ	131.64Å 131.64Å 41.21Å 90.00° 90.00° 120.00°	Depositor
Resolution (Å)	19.95 – 2.23 19.95 – 2.23	Depositor EDS
% Data completeness (in resolution range)	97.3 (19.95-2.23) 97.3 (19.95-2.23)	Depositor EDS
R_{merge}	(Not available)	Depositor
R_{sym}	(Not available)	Depositor
$\langle I/\sigma(I) \rangle$ ¹	1.94 (at 2.23Å)	Xtriage
Refinement program	CNS 0.9	Depositor
R, R_{free}	0.173 , 0.195 0.177 , 0.217	Depositor DCC
R_{free} test set	615 reflections (4.87%)	wwPDB-VP
Wilson B-factor (Å ²)	38.0	Xtriage
Anisotropy	0.310	Xtriage
Bulk solvent k_{sol} (e/Å ³), B_{sol} (Å ²)	0.29 , 42.7	EDS
L-test for twinning ²	$\langle L \rangle = 0.50$, $\langle L^2 \rangle = 0.33$	Xtriage
Estimated twinning fraction	0.011 for h,-h-k,-l	Xtriage
F_o, F_c correlation	0.96	EDS
Total number of atoms	2203	wwPDB-VP
Average B, all atoms (Å ²)	41.0	wwPDB-VP

Xtriage's analysis on translational NCS is as follows: *The largest off-origin peak in the Patterson function is 6.07% of the height of the origin peak. No significant pseudotranslation is detected.*

¹Intensities estimated from amplitudes.

²Theoretical values of $\langle |L| \rangle$, $\langle L^2 \rangle$ for acentric reflections are 0.5, 0.333 respectively for untwinned datasets, and 0.375, 0.2 for perfectly twinned datasets.

5 Model quality

5.1 Standard geometry

Bond lengths and bond angles in the following residue types are not validated in this section: GUN, NAG

The Z score for a bond length (or angle) is the number of standard deviations the observed value is removed from the expected value. A bond length (or angle) with $|Z| > 5$ is considered an outlier worth inspection. RMSZ is the root-mean-square of all Z scores of the bond lengths (or angles).

Mol	Chain	Bond lengths		Bond angles	
		RMSZ	$\# Z > 5$	RMSZ	$\# Z > 5$
1	A	0.59	2/1947 (0.1%)	1.14	23/2650 (0.9%)

All (2) bond length outliers are listed below:

Mol	Chain	Res	Type	Atoms	Z	Observed(Å)	Ideal(Å)
1	A	27	HIS	CB-CG	7.05	1.60	1.50
1	A	236	ASN	C-N	5.92	1.41	1.33

All (23) bond angle outliers are listed below:

Mol	Chain	Res	Type	Atoms	Z	Observed(°)	Ideal(°)
1	A	232	VAL	CB-CA-C	-10.38	98.44	112.04
1	A	143	ASP	N-CA-C	-9.13	92.87	107.93
1	A	142	TYR	N-CA-C	8.43	122.95	110.30
1	A	27	HIS	CA-CB-CG	7.53	121.33	113.80
1	A	211	THR	CA-C-N	7.39	127.39	119.78
1	A	211	THR	C-N-CA	7.39	127.39	119.78
1	A	158	THR	CB-CA-C	-6.66	99.62	110.08
1	A	204	GLY	N-CA-C	-6.29	104.83	115.34
1	A	221	ASN	N-CA-C	6.22	119.79	109.46
1	A	14	TYR	N-CA-C	-5.95	104.88	111.36
1	A	235	SER	N-CA-C	5.91	121.46	112.54
1	A	158	THR	N-CA-C	5.88	120.75	112.93
1	A	142	TYR	CB-CA-C	-5.86	101.92	110.06
1	A	236	ASN	CB-CA-C	-5.85	101.55	111.26
1	A	232	VAL	N-CA-CB	5.82	117.74	110.47
1	A	236	ASN	CA-C-N	5.68	128.19	120.63
1	A	236	ASN	C-N-CA	5.68	128.19	120.63
1	A	144	SER	N-CA-C	5.62	117.48	111.36
1	A	29	GLU	N-CA-C	5.56	118.14	109.52

Continued on next page...

Continued from previous page...

Mol	Chain	Res	Type	Atoms	Z	Observed(°)	Ideal(°)
1	A	47	TYR	N-CA-C	5.26	117.48	108.90
1	A	121	PRO	N-CA-C	-5.18	103.70	111.57
1	A	59	THR	N-CA-C	5.11	116.96	109.24
1	A	143	ASP	CB-CA-C	5.01	117.36	110.34

There are no chirality outliers.

There are no planarity outliers.

5.2 Too-close contacts ⓘ

In the following table, the Non-H and H(model) columns list the number of non-hydrogen atoms and hydrogen atoms in the chain respectively. The H(added) column lists the number of hydrogen atoms added and optimized by MolProbity. The Clashes column lists the number of clashes within the asymmetric unit, whereas Symm-Clashes lists symmetry-related clashes.

Mol	Chain	Non-H	H(model)	H(added)	Clashes	Symm-Clashes
1	A	1911	0	1932	24	0
2	B	28	0	25	0	0
3	A	11	0	5	1	0
4	A	253	0	0	2	0
All	All	2203	0	1962	24	0

The all-atom clashscore is defined as the number of clashes found per 1000 atoms (including hydrogen atoms). The all-atom clashscore for this structure is 6.

All (24) close contacts within the same asymmetric unit are listed below, sorted by their clash magnitude.

Atom-1	Atom-2	Interatomic distance (Å)	Clash overlap (Å)
1:A:31:VAL:HG13	1:A:203:GLN:HE21	1.03	1.14
1:A:31:VAL:HG13	1:A:203:GLN:NE2	1.74	1.03
1:A:71:ILE:H	3:A:4053:GUN:HN1	1.31	0.79
1:A:227:ASN:OD1	1:A:229:THR:HB	1.90	0.71
1:A:31:VAL:CG1	1:A:203:GLN:NE2	2.55	0.69
1:A:242:ASN:HD22	1:A:244:LYS:H	1.40	0.69
1:A:131:ALA:HA	1:A:134:THR:CG2	2.35	0.56
1:A:131:ALA:HA	1:A:134:THR:HG22	1.89	0.54
1:A:165:LYS:HE2	1:A:235:SER:O	2.07	0.54
1:A:185:THR:O	1:A:189:GLU:HG3	2.08	0.54
1:A:131:ALA:O	1:A:134:THR:HG23	2.07	0.53
1:A:10:ASP:HB2	1:A:11:PRO:CD	2.41	0.50

Continued on next page...

Continued from previous page...

Atom-1	Atom-2	Interatomic distance (Å)	Clash overlap (Å)
1:A:77:LEU:HG	1:A:78:THR:N	2.28	0.49
1:A:244:LYS:HG3	4:A:448:HOH:O	2.13	0.48
1:A:84:ASN:HB2	1:A:105:LEU:O	2.16	0.46
1:A:13:SER:HA	1:A:16:MET:CE	2.46	0.45
1:A:244:LYS:HE3	4:A:249:HOH:O	2.16	0.45
1:A:77:LEU:HG	1:A:78:THR:H	1.82	0.45
1:A:127:ILE:O	1:A:174:ARG:HD3	2.16	0.45
1:A:131:ALA:O	1:A:134:THR:CG2	2.67	0.43
1:A:211:THR:HA	1:A:212:PRO:HD3	1.79	0.42
1:A:151:LEU:O	1:A:155:ILE:HG13	2.20	0.41
1:A:125:ILE:HA	1:A:126:PRO:HD3	1.91	0.41
1:A:13:SER:HA	1:A:16:MET:HE3	2.04	0.40

There are no symmetry-related clashes.

5.3 Torsion angles [i](#)

5.3.1 Protein backbone [i](#)

In the following table, the Percentiles column shows the percent Ramachandran outliers of the chain as a percentile score with respect to all X-ray entries followed by that with respect to entries of similar resolution.

The Analysed column shows the number of residues for which the backbone conformation was analysed, and the total number of residues.

Mol	Chain	Analysed	Favoured	Allowed	Outliers	Percentiles	
1	A	244/246 (99%)	237 (97%)	7 (3%)	0	100	100

There are no Ramachandran outliers to report.

5.3.2 Protein sidechains [i](#)

In the following table, the Percentiles column shows the percent sidechain outliers of the chain as a percentile score with respect to all X-ray entries followed by that with respect to entries of similar resolution.

The Analysed column shows the number of residues for which the sidechain conformation was analysed, and the total number of residues.

Mol	Chain	Analysed	Rotameric	Outliers	Percentiles
1	A	209/209 (100%)	191 (91%)	18 (9%)	8 5

All (18) residues with a non-rotameric sidechain are listed below:

Mol	Chain	Res	Type
1	A	28	THR
1	A	37	LEU
1	A	49	LEU
1	A	69	VAL
1	A	134	THR
1	A	187	SER
1	A	188	LEU
1	A	191	SER
1	A	201	LEU
1	A	211	THR
1	A	217	ASP
1	A	219	LYS
1	A	222	ARG
1	A	229	THR
1	A	232	VAL
1	A	242	ASN
1	A	243	THR
1	A	244	LYS

Sometimes sidechains can be flipped to improve hydrogen bonding and reduce clashes. All (7) such sidechains are listed below:

Mol	Chain	Res	Type
1	A	23	ASN
1	A	93	GLN
1	A	203	GLN
1	A	221	ASN
1	A	224	GLN
1	A	242	ASN
1	A	245	ASN

5.3.3 RNA ⓘ

There are no RNA molecules in this entry.

5.4 Non-standard residues in protein, DNA, RNA chains ⓘ

There are no non-standard protein/DNA/RNA residues in this entry.

5.5 Carbohydrates ⓘ

2 monosaccharides are modelled in this entry.

In the following table, the Counts columns list the number of bonds (or angles) for which Mogul statistics could be retrieved, the number of bonds (or angles) that are observed in the model and the number of bonds (or angles) that are defined in the Chemical Component Dictionary. The Link column lists molecule types, if any, to which the group is linked. The Z score for a bond length (or angle) is the number of standard deviations the observed value is removed from the expected value. A bond length (or angle) with $|Z| > 2$ is considered an outlier worth inspection. RMSZ is the root-mean-square of all Z scores of the bond lengths (or angles).

Mol	Type	Chain	Res	Link	Bond lengths			Bond angles		
					Counts	RMSZ	# $ Z > 2$	Counts	RMSZ	# $ Z > 2$
2	NAG	B	1	1,2	14,14,15	0.57	0	17,19,21	1.41	2 (11%)
2	NAG	B	2	2	14,14,15	0.73	0	17,19,21	3.03	10 (58%)

In the following table, the Chirals column lists the number of chiral outliers, the number of chiral centers analysed, the number of these observed in the model and the number defined in the Chemical Component Dictionary. Similar counts are reported in the Torsion and Rings columns. '-' means no outliers of that kind were identified.

Mol	Type	Chain	Res	Link	Chirals	Torsions	Rings
2	NAG	B	1	1,2	-	0/6/23/26	0/1/1/1
2	NAG	B	2	2	-	4/6/23/26	0/1/1/1

There are no bond length outliers.

All (12) bond angle outliers are listed below:

Mol	Chain	Res	Type	Atoms	Z	Observed(°)	Ideal(°)
2	B	2	NAG	C1-C2-N2	6.23	120.25	110.43
2	B	2	NAG	C1-O5-C5	5.90	120.10	112.19
2	B	2	NAG	C4-C3-C2	-4.51	104.42	111.02
2	B	2	NAG	C8-C7-N2	3.70	122.25	116.12
2	B	1	NAG	C3-C4-C5	3.67	116.89	110.23
2	B	2	NAG	C2-N2-C7	3.62	127.75	122.90
2	B	2	NAG	O3-C3-C4	2.80	116.99	110.38
2	B	2	NAG	O5-C1-C2	2.70	115.47	111.29
2	B	2	NAG	O7-C7-C8	-2.58	117.47	122.05

Continued on next page...

Continued from previous page...

Mol	Chain	Res	Type	Atoms	Z	Observed(°)	Ideal(°)
2	B	2	NAG	O5-C5-C4	2.27	116.34	110.83
2	B	1	NAG	C4-C3-C2	2.22	114.27	111.02
2	B	2	NAG	O3-C3-C2	2.09	113.74	109.40

There are no chirality outliers.

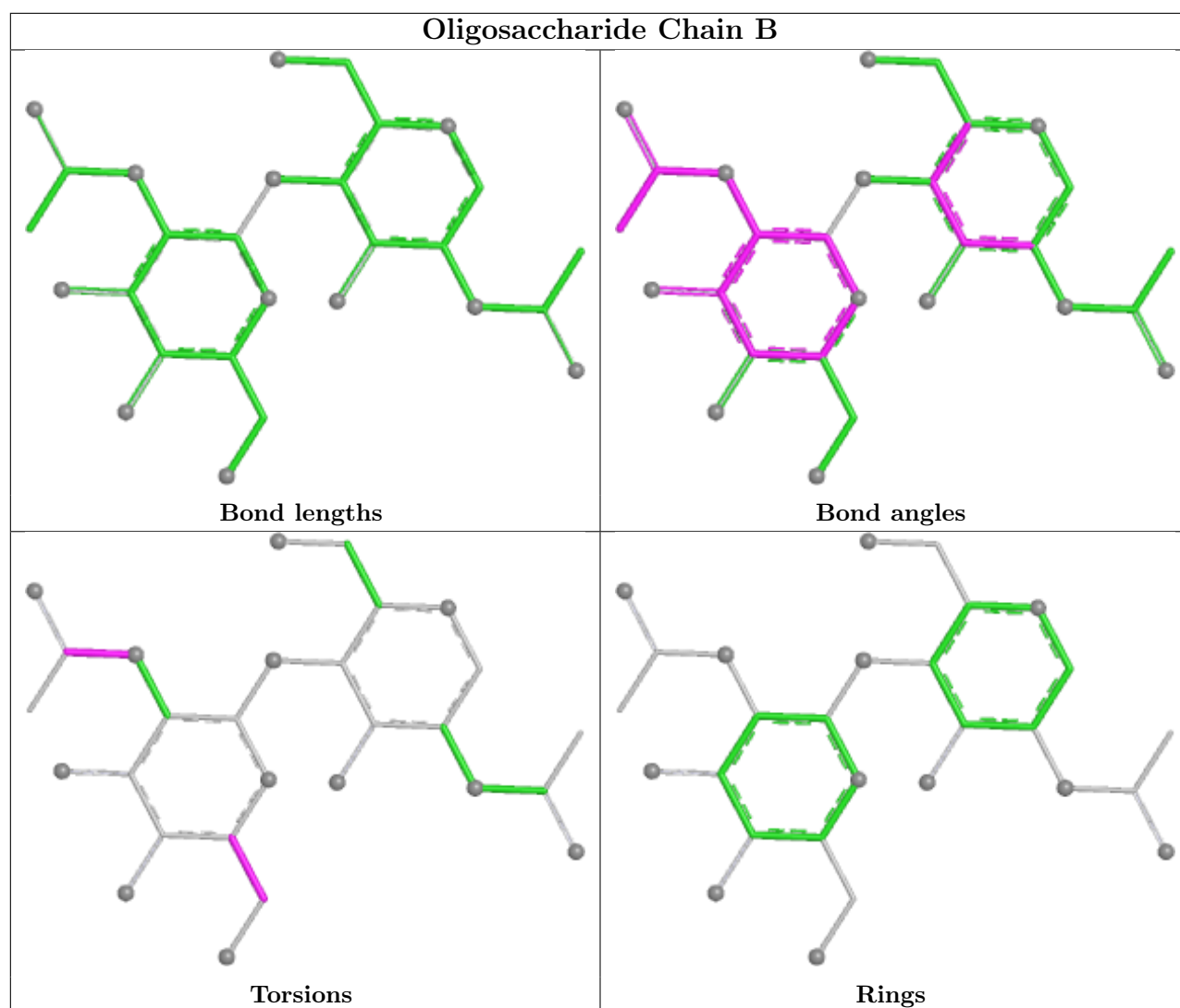
All (4) torsion outliers are listed below:

Mol	Chain	Res	Type	Atoms
2	B	2	NAG	O5-C5-C6-O6
2	B	2	NAG	C8-C7-N2-C2
2	B	2	NAG	O7-C7-N2-C2
2	B	2	NAG	C4-C5-C6-O6

There are no ring outliers.

No monomer is involved in short contacts.

The following is a two-dimensional graphical depiction of Mogul quality analysis of bond lengths, bond angles, torsion angles, and ring geometry for oligosaccharide.



5.6 Ligand geometry [i](#)

1 ligand is modelled in this entry.

In the following table, the Counts columns list the number of bonds (or angles) for which Mogul statistics could be retrieved, the number of bonds (or angles) that are observed in the model and the number of bonds (or angles) that are defined in the Chemical Component Dictionary. The Link column lists molecule types, if any, to which the group is linked. The Z score for a bond length (or angle) is the number of standard deviations the observed value is removed from the expected value. A bond length (or angle) with $|Z| > 2$ is considered an outlier worth inspection. RMSZ is the root-mean-square of all Z scores of the bond lengths (or angles).

Mol	Type	Chain	Res	Link	Bond lengths			Bond angles		
					Counts	RMSZ	# $ Z > 2$	Counts	RMSZ	# $ Z > 2$
3	GUN	A	4053	-	7,12,12	2.45	2 (28%)	8,17,17	4.71	6 (75%)

In the following table, the Chirals column lists the number of chiral outliers, the number of chiral

centers analysed, the number of these observed in the model and the number defined in the Chemical Component Dictionary. Similar counts are reported in the Torsion and Rings columns. '-' means no outliers of that kind were identified.

Mol	Type	Chain	Res	Link	Chirals	Torsions	Rings
3	GUN	A	4053	-	-	-	0/2/2/2

All (2) bond length outliers are listed below:

Mol	Chain	Res	Type	Atoms	Z	Observed(Å)	Ideal(Å)
3	A	4053	GUN	C5-C6	4.40	1.56	1.47
3	A	4053	GUN	C6-N1	3.92	1.43	1.37

All (6) bond angle outliers are listed below:

Mol	Chain	Res	Type	Atoms	Z	Observed(°)	Ideal(°)
3	A	4053	GUN	C2-N1-C6	-7.10	112.11	125.11
3	A	4053	GUN	N2-C2-N1	6.92	131.36	116.76
3	A	4053	GUN	N2-C2-N3	-6.45	107.09	119.67
3	A	4053	GUN	C5-C6-N1	3.92	121.56	114.07
3	A	4053	GUN	O6-C6-C5	-3.43	117.52	124.32
3	A	4053	GUN	C8-N7-C5	3.01	107.68	102.55

There are no chirality outliers.

There are no torsion outliers.

There are no ring outliers.

1 monomer is involved in 1 short contact:

Mol	Chain	Res	Type	Clashes	Symm-Clashes
3	A	4053	GUN	1	0

5.7 Other polymers [i](#)

There are no such residues in this entry.

5.8 Polymer linkage issues [i](#)

There are no chain breaks in this entry.

6 Fit of model and data [i](#)

6.1 Protein, DNA and RNA chains [i](#)

In the following table, the column labelled ‘#RSRZ > 2’ contains the number (and percentage) of RSRZ outliers, followed by percent RSRZ outliers for the chain as percentile scores relative to all X-ray entries and entries of similar resolution. The OWAB column contains the minimum, median, 95th percentile and maximum values of the occupancy-weighted average B-factor per residue. The column labelled ‘Q < 0.9’ lists the number of (and percentage) of residues with an average occupancy less than 0.9.

Mol	Chain	Analysed	<RSRZ>	#RSRZ>2	OWAB(Å ²)	Q<0.9
1	A	246/246 (100%)	-0.37	4 (1%) 70 71	17, 37, 55, 82	1 (0%)

All (4) RSRZ outliers are listed below:

Mol	Chain	Res	Type	RSRZ
1	A	222	ARG	2.7
1	A	70	TYR	2.7
1	A	203	GLN	2.4
1	A	204	GLY	2.3

6.2 Non-standard residues in protein, DNA, RNA chains [i](#)

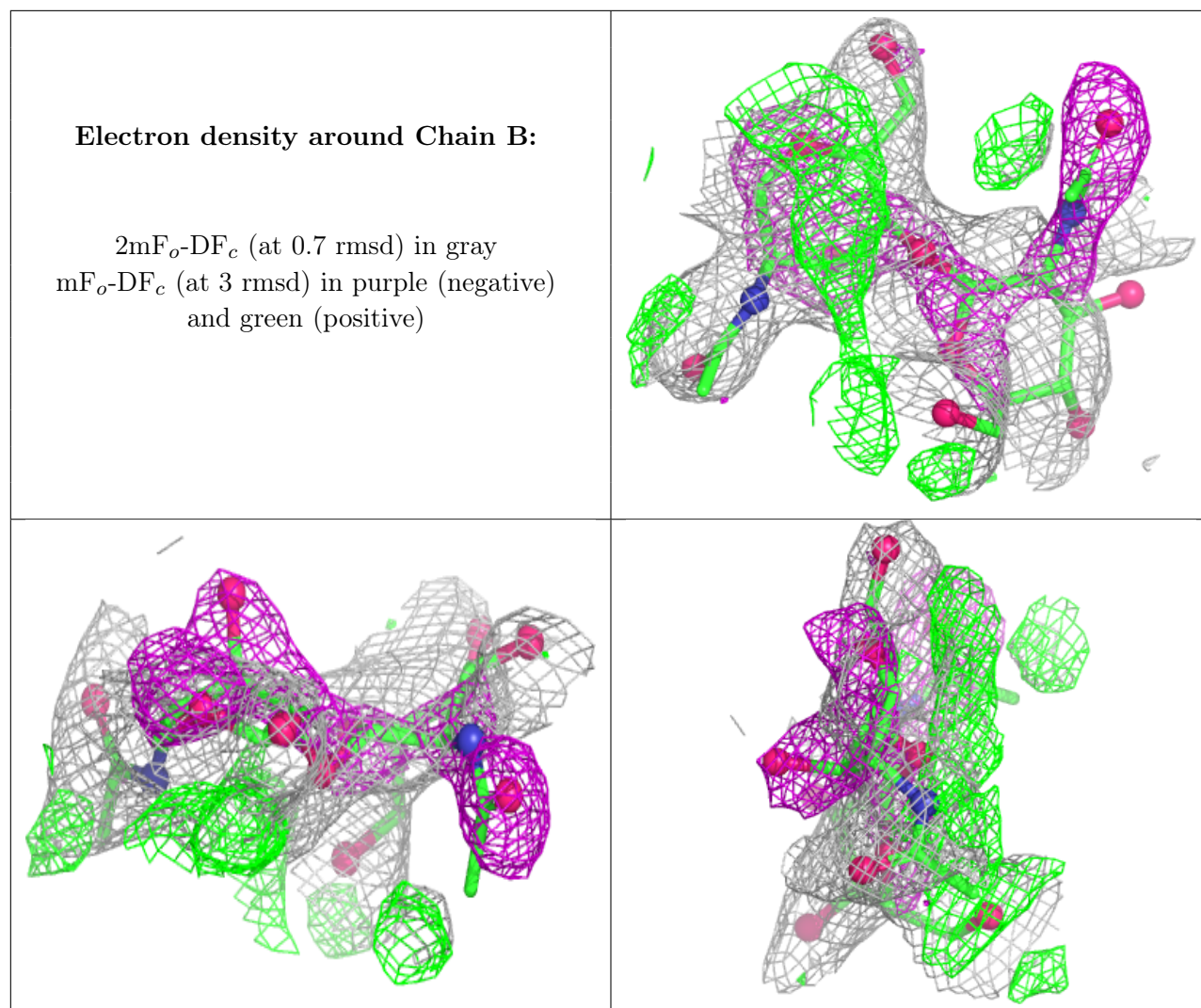
There are no non-standard protein/DNA/RNA residues in this entry.

6.3 Carbohydrates [i](#)

In the following table, the Atoms column lists the number of modelled atoms in the group and the number defined in the chemical component dictionary. The B-factors column lists the minimum, median, 95th percentile and maximum values of B factors of atoms in the group. The column labelled ‘Q < 0.9’ lists the number of atoms with occupancy less than 0.9.

Mol	Type	Chain	Res	Atoms	RSCC	RSR	B-factors(Å ²)	Q<0.9
2	NAG	B	2	14/15	0.31	0.16	69,72,74,74	0
2	NAG	B	1	14/15	0.52	0.15	46,57,62,64	0

The following is a graphical depiction of the model fit to experimental electron density for oligosaccharide. Each fit is shown from different orientation to approximate a three-dimensional view.



6.4 Ligands [i](#)

In the following table, the Atoms column lists the number of modelled atoms in the group and the number defined in the chemical component dictionary. The B-factors column lists the minimum, median, 95th percentile and maximum values of B factors of atoms in the group. The column labelled 'Q< 0.9' lists the number of atoms with occupancy less than 0.9.

Mol	Type	Chain	Res	Atoms	RSCC	RSR	B-factors(\AA^2)	Q<0.9
3	GUN	A	4053	11/11	0.92	0.08	33,36,40,41	0

6.5 Other polymers [i](#)

There are no such residues in this entry.