



Full wwPDB X-ray Structure Validation Report ⓘ

Nov 3, 2024 – 12:02 AM EDT

PDB ID : 3LGB
Title : Crystal Structure of the Fe-S Domain of the yeast DNA primase
Authors : Sauguet, L.; Pellegrini, L.
Deposited on : 2010-01-20
Resolution : 1.54 Å(reported)

This is a Full wwPDB X-ray Structure Validation Report for a publicly released PDB entry.

We welcome your comments at validation@mail.wwpdb.org

A user guide is available at

<https://www.wwpdb.org/validation/2017/XrayValidationReportHelp>

with specific help available everywhere you see the ⓘ symbol.

The types of validation reports are described at

<http://www.wwpdb.org/validation/2017/FAQs#types>.

The following versions of software and data (see [references ⓘ](#)) were used in the production of this report:

MolProbity : 4.02b-467
Mogul : 2022.3.0, CSD as543be (2022)
Xtriage (Phenix) : 1.20.1
EDS : 3.0
Percentile statistics : 20231227.v01 (using entries in the PDB archive December 27th 2023)
CCP4 : 9.0.003 (Gargrove)
Density-Fitness : 1.0.11
Ideal geometry (proteins) : Engh & Huber (2001)
Ideal geometry (DNA, RNA) : Parkinson et al. (1996)
Validation Pipeline (wwPDB-VP) : 2.39

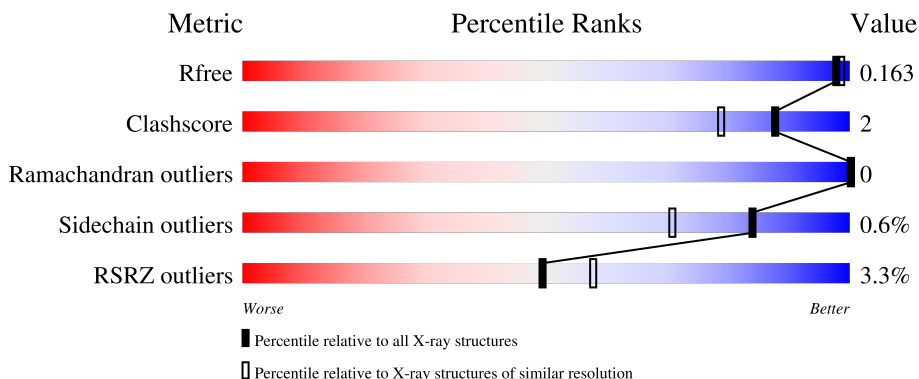
1 Overall quality at a glance

The following experimental techniques were used to determine the structure:

X-RAY DIFFRACTION

The reported resolution of this entry is 1.54 Å.

Percentile scores (ranging between 0-100) for global validation metrics of the entry are shown in the following graphic. The table shows the number of entries on which the scores are based.



Metric	Whole archive (#Entries)	Similar resolution (#Entries, resolution range(Å))
R_{free}	164625	3511 (1.56-1.52)
Clashscore	180529	3784 (1.56-1.52)
Ramachandran outliers	177936	3720 (1.56-1.52)
Sidechain outliers	177891	3717 (1.56-1.52)
RSRZ outliers	164620	3510 (1.56-1.52)

The table below summarises the geometric issues observed across the polymeric chains and their fit to the electron density. The red, orange, yellow and green segments of the lower bar indicate the fraction of residues that contain outliers for ≥ 3 , 2, 1 and 0 types of geometric quality criteria respectively. A grey segment represents the fraction of residues that are not modelled. The numeric value for each fraction is indicated below the corresponding segment, with a dot representing fractions $\leq 5\%$. The upper red bar (where present) indicates the fraction of residues that have poor fit to the electron density. The numeric value is given above the bar.

Mol	Chain	Length	Quality of chain
1	A	194	 4% 89% 7%
1	B	194	 2% 95%

2 Entry composition

There are 6 unique types of molecules in this entry. The entry contains 3704 atoms, of which 0 are hydrogens and 0 are deuteriums.

In the tables below, the ZeroOcc column contains the number of atoms modelled with zero occupancy, the AltConf column contains the number of residues with at least one atom in alternate conformation and the Trace column contains the number of residues modelled with at most 2 atoms.

- Molecule 1 is a protein called DNA primase large subunit.

Mol	Chain	Residues	Atoms						ZeroOcc	AltConf	Trace
			Total	C	N	O	S	Se			
1	A	181	1531	969	274	278	5	5	0	5	0
1	B	193	1623	1024	288	299	5	7	0	7	0

There are 8 discrepancies between the modelled and reference sequences:

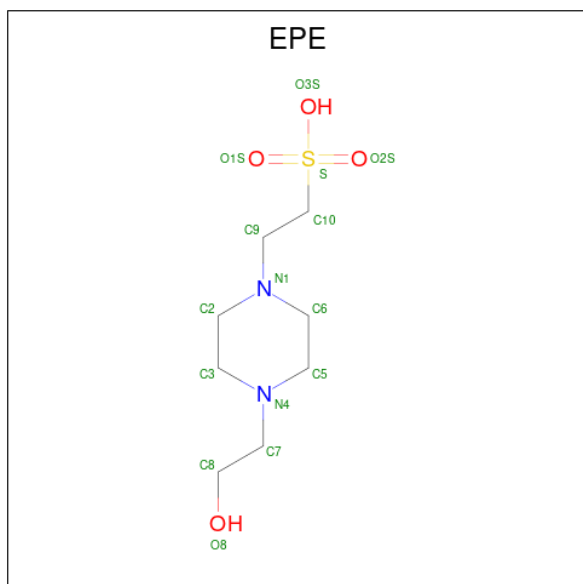
Chain	Residue	Modelled	Actual	Comment	Reference
A	316	SER	-	expression tag	UNP P20457
A	?	-	ARG	deletion	UNP P20457
A	?	-	ASN	deletion	UNP P20457
A	?	-	GLY	deletion	UNP P20457
B	316	SER	-	expression tag	UNP P20457
B	?	-	ARG	deletion	UNP P20457
B	?	-	ASN	deletion	UNP P20457
B	?	-	GLY	deletion	UNP P20457

- Molecule 2 is IRON/SULFUR CLUSTER (three-letter code: SF4) (formula: Fe₄S₄).



Mol	Chain	Residues	Atoms		ZeroOcc	AltConf
2	A	1	Total	Fe S	0	0
			8	4 4		
2	B	1	Total	Fe S	0	0
			8	4 4		

- Molecule 3 is 4-(2-HYDROXYETHYL)-1-PIPERAZINE ETHANESULFONIC ACID (three-letter code: EPE) (formula: C₈H₁₈N₂O₄S).



Mol	Chain	Residues	Atoms				ZeroOcc	AltConf	
3	A	1	Total	C	N	O	S	0	0
			15	8	2	4	1		

Continued on next page...

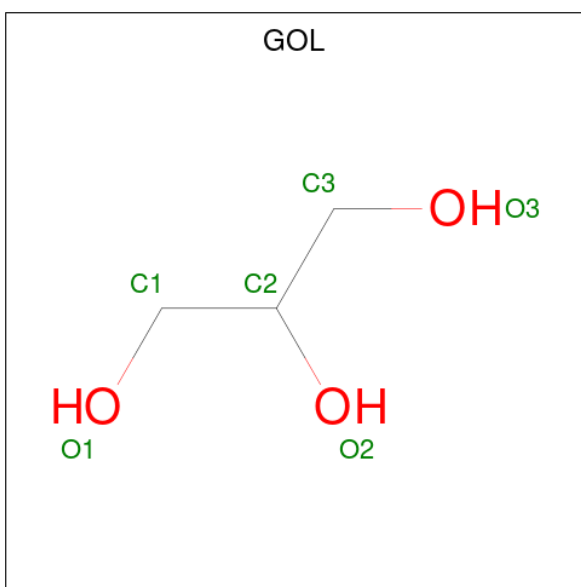
Continued from previous page...

Mol	Chain	Residues	Atoms					ZeroOcc	AltConf
			Total	C	N	O	S		
3	A	1	15	8	2	4	1	0	0

- Molecule 4 is ZINC ION (three-letter code: ZN) (formula: Zn).

Mol	Chain	Residues	Atoms		ZeroOcc	AltConf
			Total	Zn		
4	B	2	2	2	0	0

- Molecule 5 is GLYCEROL (three-letter code: GOL) (formula: C₃H₈O₃).



Mol	Chain	Residues	Atoms		ZeroOcc	AltConf
			Total	C O		
5	B	1	6	3 3	0	0

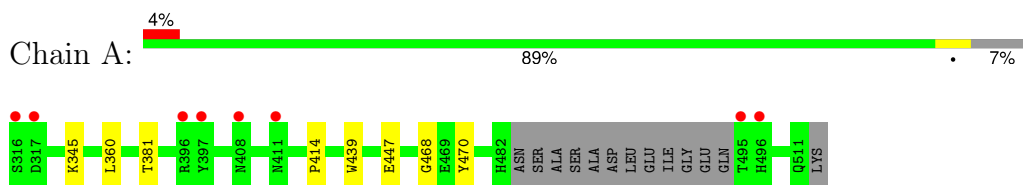
- Molecule 6 is water.

Mol	Chain	Residues	Atoms		ZeroOcc	AltConf
			Total	O		
6	A	229	229	229	0	0
6	B	267	267	267	0	0

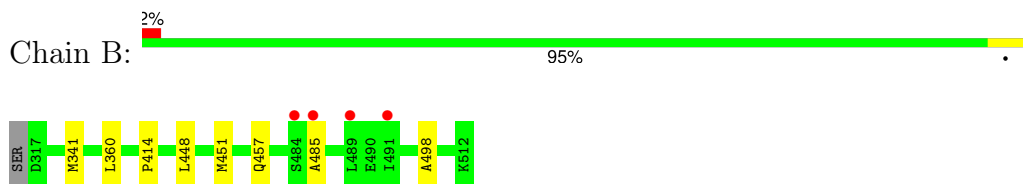
3 Residue-property plots [i](#)

These plots are drawn for all protein, RNA, DNA and oligosaccharide chains in the entry. The first graphic for a chain summarises the proportions of the various outlier classes displayed in the second graphic. The second graphic shows the sequence view annotated by issues in geometry and electron density. Residues are color-coded according to the number of geometric quality criteria for which they contain at least one outlier: green = 0, yellow = 1, orange = 2 and red = 3 or more. A red dot above a residue indicates a poor fit to the electron density ($RSRZ > 2$). Stretches of 2 or more consecutive residues without any outlier are shown as a green connector. Residues present in the sample, but not in the model, are shown in grey.

- Molecule 1: DNA primase large subunit



- Molecule 1: DNA primase large subunit



4 Data and refinement statistics

Property	Value	Source
Space group	P 61	Depositor
Cell constants a, b, c, α , β , γ	86.57Å 86.57Å 141.48Å 90.00° 90.00° 120.00°	Depositor
Resolution (Å)	29.34 – 1.54 29.34 – 1.54	Depositor EDS
% Data completeness (in resolution range)	100.0 (29.34-1.54) 100.0 (29.34-1.54)	Depositor EDS
R_{merge}	0.10	Depositor
R_{sym}	0.10	Depositor
$\langle I/\sigma(I) \rangle$ ¹	3.22 (at 1.54Å)	Xtrriage
Refinement program	BUSTER 2.8.0	Depositor
R, R_{free}	0.154 , 0.164 0.153 , 0.163	Depositor DCC
R_{free} test set	4430 reflections (5.02%)	wwPDB-VP
Wilson B-factor (Å ²)	16.0	Xtrriage
Anisotropy	0.265	Xtrriage
Bulk solvent k_{sol} (e/Å ³), B_{sol} (Å ²)	0.36 , 45.5	EDS
L-test for twinning ²	$\langle L \rangle = 0.49$, $\langle L^2 \rangle = 0.32$	Xtrriage
Estimated twinning fraction	0.043 for h,-h-k,-l	Xtrriage
F_o, F_c correlation	0.97	EDS
Total number of atoms	3704	wwPDB-VP
Average B, all atoms (Å ²)	26.0	wwPDB-VP

Xtrriage's analysis on translational NCS is as follows: *The largest off-origin peak in the Patterson function is 3.42% of the height of the origin peak. No significant pseudotranslation is detected.*

¹Intensities estimated from amplitudes.

²Theoretical values of $\langle |L| \rangle$, $\langle L^2 \rangle$ for acentric reflections are 0.5, 0.333 respectively for untwinned datasets, and 0.375, 0.2 for perfectly twinned datasets.

5 Model quality [i](#)

5.1 Standard geometry [i](#)

Bond lengths and bond angles in the following residue types are not validated in this section: GOL, SF4, ZN, EPE

The Z score for a bond length (or angle) is the number of standard deviations the observed value is removed from the expected value. A bond length (or angle) with $|Z| > 5$ is considered an outlier worth inspection. RMSZ is the root-mean-square of all Z scores of the bond lengths (or angles).

Mol	Chain	Bond lengths		Bond angles	
		RMSZ	# $ Z > 5$	RMSZ	# $ Z > 5$
1	A	0.51	0/1577	0.58	0/2113
1	B	0.50	1/1679 (0.1%)	0.58	0/2248
All	All	0.51	1/3256 (0.0%)	0.58	0/4361

All (1) bond length outliers are listed below:

Mol	Chain	Res	Type	Atoms	Z	Observed(Å)	Ideal(Å)
1	B	341	MSE	SE-CE	-5.01	1.65	1.95

There are no bond angle outliers.

There are no chirality outliers.

There are no planarity outliers.

5.2 Too-close contacts [i](#)

In the following table, the Non-H and H(model) columns list the number of non-hydrogen atoms and hydrogen atoms in the chain respectively. The H(added) column lists the number of hydrogen atoms added and optimized by MolProbity. The Clashes column lists the number of clashes within the asymmetric unit, whereas Symm-Clashes lists symmetry-related clashes.

Mol	Chain	Non-H	H(model)	H(added)	Clashes	Symm-Clashes
1	A	1531	0	1485	6	0
1	B	1623	0	1583	4	0
2	A	8	0	0	0	0
2	B	8	0	0	0	0
3	A	30	0	36	6	0
4	B	2	0	0	0	0
5	B	6	0	8	0	0
6	A	229	0	0	1	0

Continued on next page...

Continued from previous page...

Mol	Chain	Non-H	H(model)	H(added)	Clashes	Symm-Clashes
6	B	267	0	0	1	0
All	All	3704	0	3112	12	0

The all-atom clashscore is defined as the number of clashes found per 1000 atoms (including hydrogen atoms). The all-atom clashscore for this structure is 2.

All (12) close contacts within the same asymmetric unit are listed below, sorted by their clash magnitude.

Atom-1	Atom-2	Interatomic distance (Å)	Clash overlap (Å)
1:A:439:TRP:CZ3	1:A:447:GLU:HG3	2.22	0.74
3:A:1:EPE:H51	6:A:142:HOH:O	1.93	0.68
3:A:513:EPE:H52	1:B:498:ALA:HB3	1.77	0.66
1:A:439:TRP:HZ3	1:A:447:GLU:HG3	1.72	0.53
1:B:360:LEU:HB3	1:B:414:PRO:HA	1.96	0.48
1:A:468:GLY:O	3:A:1:EPE:H22	2.15	0.47
1:A:470:TYR:HE2	3:A:1:EPE:H81	1.79	0.47
3:A:513:EPE:H61	6:B:136:HOH:O	2.17	0.44
1:B:457:GLN:NE2	1:B:485:ALA:O	2.48	0.44
1:A:360:LEU:HB3	1:A:414:PRO:HA	2.01	0.42
1:A:470:TYR:CE2	3:A:1:EPE:H81	2.55	0.41
1:B:448:LEU:HD23	1:B:451[A]:MSE:SE	2.71	0.40

There are no symmetry-related clashes.

5.3 Torsion angles [i](#)

5.3.1 Protein backbone [i](#)

In the following table, the Percentiles column shows the percent Ramachandran outliers of the chain as a percentile score with respect to all X-ray entries followed by that with respect to entries of similar resolution.

The Analysed column shows the number of residues for which the backbone conformation was analysed, and the total number of residues.

Mol	Chain	Analysed	Favoured	Allowed	Outliers	Percentiles	
1	A	182/194 (94%)	179 (98%)	3 (2%)	0	100	100
1	B	198/194 (102%)	196 (99%)	2 (1%)	0	100	100
All	All	380/388 (98%)	375 (99%)	5 (1%)	0	100	100

There are no Ramachandran outliers to report.

5.3.2 Protein sidechains [i](#)

In the following table, the Percentiles column shows the percent sidechain outliers of the chain as a percentile score with respect to all X-ray entries followed by that with respect to entries of similar resolution.

The Analysed column shows the number of residues for which the sidechain conformation was analysed, and the total number of residues.

Mol	Chain	Analysed	Rotameric	Outliers	Percentiles
1	A	168/168 (100%)	166 (99%)	2 (1%)	67 43
1	B	179/168 (106%)	179 (100%)	0	100 100
All	All	347/336 (103%)	345 (99%)	2 (1%)	84 71

All (2) residues with a non-rotameric sidechain are listed below:

Mol	Chain	Res	Type
1	A	345	LYS
1	A	381	THR

Sometimes sidechains can be flipped to improve hydrogen bonding and reduce clashes. All (2) such sidechains are listed below:

Mol	Chain	Res	Type
1	A	332	ASN
1	B	483	ASN

5.3.3 RNA [i](#)

There are no RNA molecules in this entry.

5.4 Non-standard residues in protein, DNA, RNA chains [i](#)

There are no non-standard protein/DNA/RNA residues in this entry.

5.5 Carbohydrates [i](#)

There are no oligosaccharides in this entry.

5.6 Ligand geometry [i](#)

Of 7 ligands modelled in this entry, 2 are monoatomic - leaving 5 for Mogul analysis.

In the following table, the Counts columns list the number of bonds (or angles) for which Mogul statistics could be retrieved, the number of bonds (or angles) that are observed in the model and the number of bonds (or angles) that are defined in the Chemical Component Dictionary. The Link column lists molecule types, if any, to which the group is linked. The Z score for a bond length (or angle) is the number of standard deviations the observed value is removed from the expected value. A bond length (or angle) with $|Z| > 2$ is considered an outlier worth inspection. RMSZ is the root-mean-square of all Z scores of the bond lengths (or angles).

Mol	Type	Chain	Res	Link	Bond lengths			Bond angles		
					Counts	RMSZ	# Z > 2	Counts	RMSZ	# Z > 2
2	SF4	B	514	1	0,12,12	-	-	-		
2	SF4	A	514	1	0,12,12	-	-	-		
5	GOL	B	1	-	5,5,5	0.51	0	5,5,5	0.88	0
3	EPE	A	1	-	15,15,15	1.11	2 (13%)	19,20,20	2.61	9 (47%)
3	EPE	A	513	-	15,15,15	1.18	1 (6%)	19,20,20	1.71	6 (31%)

In the following table, the Chirals column lists the number of chiral outliers, the number of chiral centers analysed, the number of these observed in the model and the number defined in the Chemical Component Dictionary. Similar counts are reported in the Torsion and Rings columns. '-' means no outliers of that kind were identified.

Mol	Type	Chain	Res	Link	Chirals	Torsions	Rings
2	SF4	B	514	1	-	-	0/6/5/5
5	GOL	B	1	-	-	3/4/4/4	-
2	SF4	A	514	1	-	-	0/6/5/5
3	EPE	A	1	-	-	1/9/19/19	0/1/1/1
3	EPE	A	513	-	-	1/9/19/19	0/1/1/1

All (3) bond length outliers are listed below:

Mol	Chain	Res	Type	Atoms	Z	Observed(Å)	Ideal(Å)
3	A	513	EPE	C10-S	3.32	1.82	1.77
3	A	1	EPE	O2S-S	-3.09	1.36	1.45
3	A	1	EPE	C2-N1	2.06	1.52	1.46

All (15) bond angle outliers are listed below:

Mol	Chain	Res	Type	Atoms	Z	Observed(°)	Ideal(°)
3	A	1	EPE	O2S-S-C10	6.09	115.93	106.73
3	A	1	EPE	C6-N1-C2	4.40	118.33	108.84

Continued on next page...

Continued from previous page...

Mol	Chain	Res	Type	Atoms	Z	Observed(°)	Ideal(°)
3	A	1	EPE	C6-C5-N4	-4.04	102.51	110.65
3	A	1	EPE	O3S-S-O2S	-3.84	101.80	111.40
3	A	1	EPE	C3-C2-N1	3.70	118.11	110.65
3	A	513	EPE	O2S-S-C10	3.20	111.57	106.73
3	A	513	EPE	C3-C2-N1	2.96	116.62	110.65
3	A	1	EPE	O3S-S-O1S	-2.81	104.37	111.40
3	A	513	EPE	C5-C6-N1	2.66	116.00	110.65
3	A	513	EPE	O3S-S-O2S	-2.52	105.09	111.40
3	A	1	EPE	O2S-S-O1S	2.35	121.47	113.82
3	A	513	EPE	C6-C5-N4	2.35	115.39	110.65
3	A	1	EPE	C7-N4-C3	2.18	117.05	111.24
3	A	1	EPE	C9-N1-C6	-2.17	105.46	111.24
3	A	513	EPE	O2S-S-O1S	2.09	120.62	113.82

There are no chirality outliers.

All (5) torsion outliers are listed below:

Mol	Chain	Res	Type	Atoms
3	A	513	EPE	C10-C9-N1-C6
5	B	1	GOL	O1-C1-C2-C3
5	B	1	GOL	O1-C1-C2-O2
3	A	1	EPE	N4-C7-C8-O8
5	B	1	GOL	O2-C2-C3-O3

There are no ring outliers.

2 monomers are involved in 6 short contacts:

Mol	Chain	Res	Type	Clashes	Symm-Clashes
3	A	1	EPE	4	0
3	A	513	EPE	2	0

5.7 Other polymers [i](#)

There are no such residues in this entry.

5.8 Polymer linkage issues [i](#)

There are no chain breaks in this entry.

6 Fit of model and data [i](#)

6.1 Protein, DNA and RNA chains [i](#)

In the following table, the column labelled ‘#RSRZ > 2’ contains the number (and percentage) of RSRZ outliers, followed by percent RSRZ outliers for the chain as percentile scores relative to all X-ray entries and entries of similar resolution. The OWAB column contains the minimum, median, 95th percentile and maximum values of the occupancy-weighted average B-factor per residue. The column labelled ‘Q < 0.9’ lists the number of (and percentage) of residues with an average occupancy less than 0.9.

Mol	Chain	Analysed	<RSRZ>	#RSRZ>2	OWAB(Å ²)	Q<0.9
1	A	176/194 (90%)	-0.08	8 (4%) 39 47	9, 20, 42, 62	5 (2%)
1	B	188/194 (96%)	-0.01	4 (2%) 63 72	10, 22, 47, 62	5 (2%)
All	All	364/388 (93%)	-0.04	12 (3%) 49 58	9, 21, 44, 62	10 (2%)

All (12) RSRZ outliers are listed below:

Mol	Chain	Res	Type	RSRZ
1	A	495	THR	6.2
1	A	496	HIS	5.0
1	B	491	ILE	4.2
1	B	485	ALA	3.6
1	A	411	ASN	3.5
1	B	484	SER	3.2
1	A	396[A]	ARG	3.1
1	A	397	TYR	2.9
1	B	489	LEU	2.8
1	A	408	ASN	2.7
1	A	316	SER	2.6
1	A	317	ASP	2.3

6.2 Non-standard residues in protein, DNA, RNA chains [i](#)

There are no non-standard protein/DNA/RNA residues in this entry.

6.3 Carbohydrates [i](#)

There are no monosaccharides in this entry.

6.4 Ligands [i](#)

In the following table, the Atoms column lists the number of modelled atoms in the group and the number defined in the chemical component dictionary. The B-factors column lists the minimum, median, 95th percentile and maximum values of B factors of atoms in the group. The column labelled 'Q< 0.9' lists the number of atoms with occupancy less than 0.9.

Mol	Type	Chain	Res	Atoms	RSCC	RSR	B-factors(\AA^2)	Q<0.9
3	EPE	A	513	15/15	0.83	0.30	25,28,30,33	15
3	EPE	A	1	15/15	0.85	0.31	24,31,34,37	15
5	GOL	B	1	6/6	0.86	0.17	27,28,28,28	6
4	ZN	B	515	1/1	0.99	0.03	22,22,22,22	1
2	SF4	A	514	8/8	1.00	0.02	12,13,13,13	0
4	ZN	B	516	1/1	1.00	0.02	14,14,14,14	0
2	SF4	B	514	8/8	1.00	0.02	15,16,17,17	0

6.5 Other polymers [i](#)

There are no such residues in this entry.