



Full wwPDB X-ray Structure Validation Report ⓘ

Oct 3, 2021 – 03:59 AM EDT

PDB ID : 3IV2
Title : Crystal structure of mature apo-Cathepsin L C25A mutant
Authors : Adams-Cioaba, M.A.; Krupa, J.C.; Mort, J.S.; Bountra, C.; Weigelt, J.; Arrowsmith, C.H.; Edwards, A.M.; Bochkarev, A.; Min, J.
Deposited on : 2009-08-31
Resolution : 2.20 Å(reported)

This is a Full wwPDB X-ray Structure Validation Report for a publicly released PDB entry.

We welcome your comments at validation@mail.wwpdb.org

A user guide is available at

<https://www.wwpdb.org/validation/2017/XrayValidationReportHelp>

with specific help available everywhere you see the ⓘ symbol.

The following versions of software and data (see [references ⓘ](#)) were used in the production of this report:

MolProbity : 4.02b-467
Mogul : 1.8.5 (274361), CSD as541be (2020)
Xtriage (Phenix) : 1.13
EDS : 2.23.2
Percentile statistics : 20191225.v01 (using entries in the PDB archive December 25th 2019)
Refmac : 5.8.0158
CCP4 : 7.0.044 (Gargrove)
Ideal geometry (proteins) : Engh & Huber (2001)
Ideal geometry (DNA, RNA) : Parkinson et al. (1996)
Validation Pipeline (wwPDB-VP) : 2.23.2

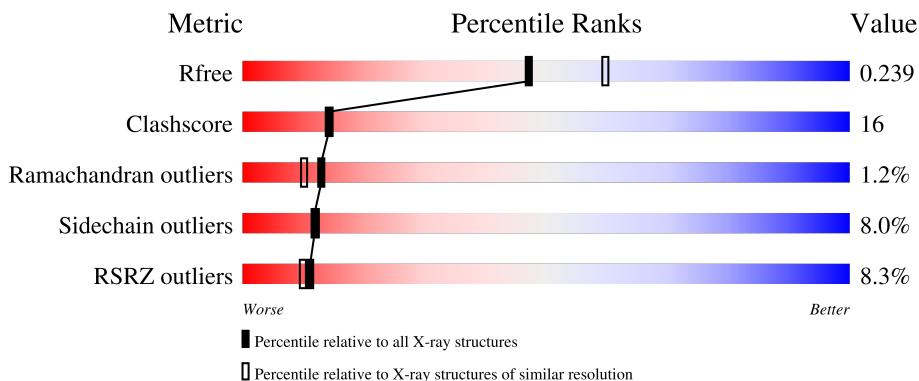
1 Overall quality at a glance

The following experimental techniques were used to determine the structure:

X-RAY DIFFRACTION

The reported resolution of this entry is 2.20 Å.

Percentile scores (ranging between 0-100) for global validation metrics of the entry are shown in the following graphic. The table shows the number of entries on which the scores are based.



Metric	Whole archive (#Entries)	Similar resolution (#Entries, resolution range(Å))
R_{free}	130704	4898 (2.20-2.20)
Clashscore	141614	5594 (2.20-2.20)
Ramachandran outliers	138981	5503 (2.20-2.20)
Sidechain outliers	138945	5504 (2.20-2.20)
RSRZ outliers	127900	4800 (2.20-2.20)

The table below summarises the geometric issues observed across the polymeric chains and their fit to the electron density. The red, orange, yellow and green segments of the lower bar indicate the fraction of residues that contain outliers for ≥ 3 , 2, 1 and 0 types of geometric quality criteria respectively. A grey segment represents the fraction of residues that are not modelled. The numeric value for each fraction is indicated below the corresponding segment, with a dot representing fractions $\leq 5\%$. The upper red bar (where present) indicates the fraction of residues that have poor fit to the electron density. The numeric value is given above the bar.

Mol	Chain	Length	Quality of chain
1	A	220	
1	B	220	

The following table lists non-polymeric compounds, carbohydrate monomers and non-standard residues in protein, DNA, RNA chains that are outliers for geometric or electron-density-fit criteria:

Mol	Type	Chain	Res	Chirality	Geometry	Clashes	Electron density
3	GOL	B	304	-	-	X	-
3	GOL	B	305	-	-	X	-

2 Entry composition i

There are 6 unique types of molecules in this entry. The entry contains 3500 atoms, of which 0 are hydrogens and 0 are deuteriums.

In the tables below, the ZeroOcc column contains the number of atoms modelled with zero occupancy, the AltConf column contains the number of residues with at least one atom in alternate conformation and the Trace column contains the number of residues modelled with at most 2 atoms.

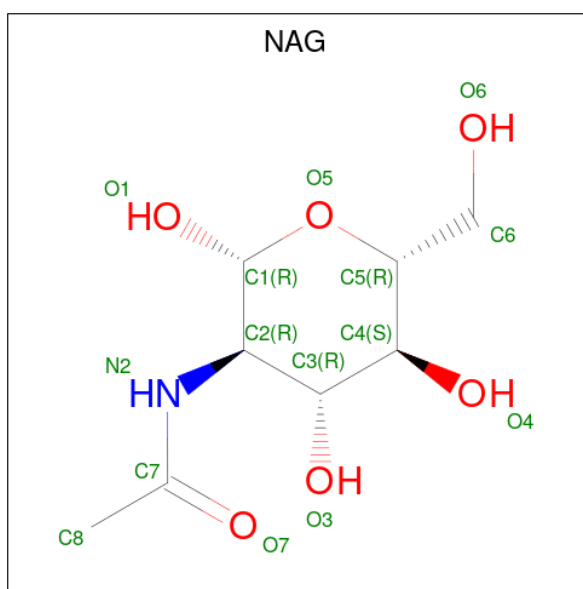
- Molecule 1 is a protein called Cathepsin L1.

Mol	Chain	Residues	Atoms					ZeroOcc	AltConf	Trace
			Total	C	N	O	S			
1	A	219	Total 1691	C 1058	N 280	O 341	S 12	0	0	0
1	B	216	Total 1666	C 1045	N 277	O 332	S 12	0	0	0

There are 2 discrepancies between the modelled and reference sequences:

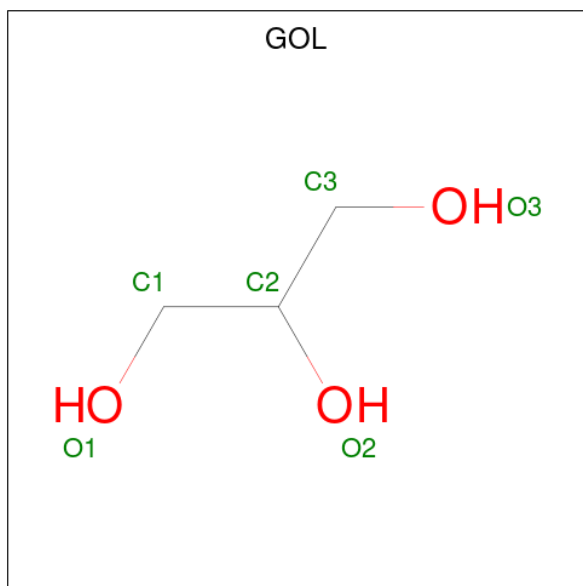
Chain	Residue	Modelled	Actual	Comment	Reference
A	25	ALA	CYS	engineered mutation	UNP P07711
B	25	ALA	CYS	engineered mutation	UNP P07711

- Molecule 2 is 2-acetamido-2-deoxy-beta-D-glucopyranose (three-letter code: NAG) (formula: C₈H₁₅NO₆).



Mol	Chain	Residues	Atoms				ZeroOcc	AltConf
			Total	C	N	O		
2	A	1	Total 14	C 8	N 1	O 5	0	0

- Molecule 3 is GLYCEROL (three-letter code: GOL) (formula: C₃H₈O₃).



Mol	Chain	Residues	Atoms	ZeroOcc	AltConf
3	A	1	Total C O 6 3 3	0	0
3	A	1	Total C O 6 3 3	0	0
3	B	1	Total C O 6 3 3	0	0
3	B	1	Total C O 6 3 3	0	0
3	B	1	Total C O 6 3 3	0	0

- Molecule 4 is SULFATE ION (three-letter code: SO4) (formula: O₄S).



Mol	Chain	Residues	Atoms	ZeroOcc	AltConf
4	A	1	Total O S 5 4 1	0	0
4	A	1	Total O S 5 4 1	0	0
4	B	1	Total O S 5 4 1	0	0
4	B	1	Total O S 5 4 1	0	0

- Molecule 5 is SODIUM ION (three-letter code: NA) (formula: Na).

Mol	Chain	Residues	Atoms	ZeroOcc	AltConf
5	B	1	Total Na 1 1	0	0

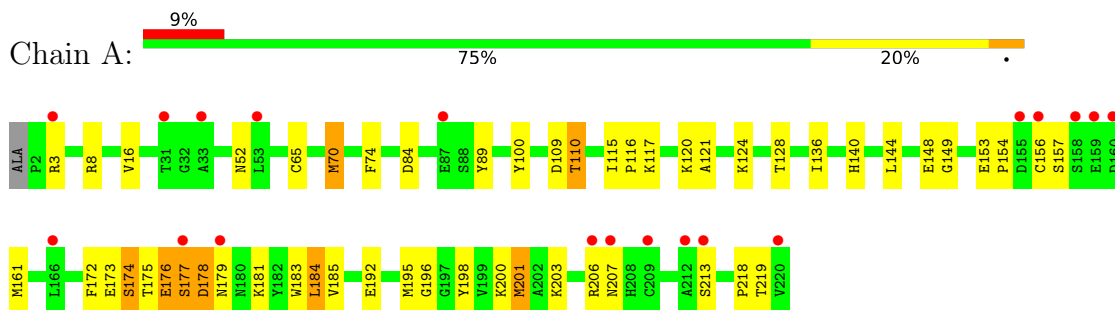
- Molecule 6 is water.

Mol	Chain	Residues	Atoms	ZeroOcc	AltConf
6	A	46	Total O 46 46	0	0
6	B	32	Total O 32 32	0	0

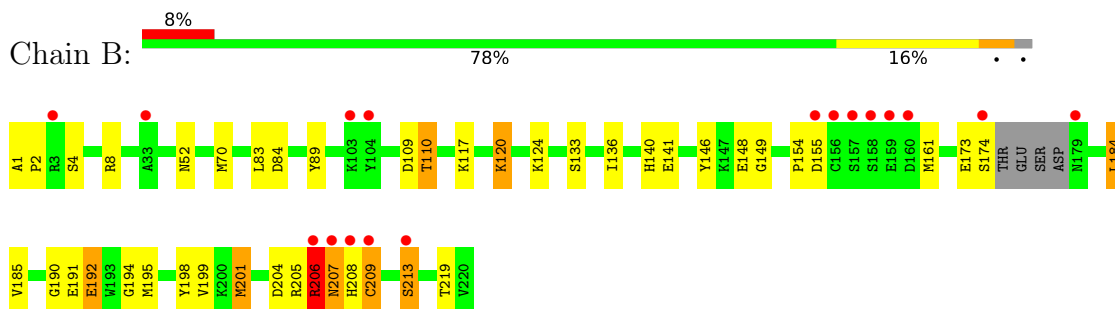
3 Residue-property plots [i](#)

These plots are drawn for all protein, RNA, DNA and oligosaccharide chains in the entry. The first graphic for a chain summarises the proportions of the various outlier classes displayed in the second graphic. The second graphic shows the sequence view annotated by issues in geometry and electron density. Residues are color-coded according to the number of geometric quality criteria for which they contain at least one outlier: green = 0, yellow = 1, orange = 2 and red = 3 or more. A red dot above a residue indicates a poor fit to the electron density ($RSRZ > 2$). Stretches of 2 or more consecutive residues without any outlier are shown as a green connector. Residues present in the sample, but not in the model, are shown in grey.

- Molecule 1: Cathepsin L1



- Molecule 1: Cathepsin L1



4 Data and refinement statistics i

Property	Value	Source
Space group	P 32 2 1	Depositor
Cell constants a, b, c, α , β , γ	61.96Å 61.96Å 206.29Å 90.00° 90.00° 120.00°	Depositor
Resolution (Å)	25.00 – 2.20 24.77 – 2.20	Depositor EDS
% Data completeness (in resolution range)	99.3 (25.00-2.20) 99.3 (24.77-2.20)	Depositor EDS
R_{merge}	(Not available)	Depositor
R_{sym}	0.08	Depositor
$\langle I/\sigma(I) \rangle$ ¹	2.09 (at 2.19Å)	Xtrriage
Refinement program	REFMAC 5.5.0102	Depositor
R, R_{free}	0.202 , 0.244 0.198 , 0.239	Depositor DCC
R_{free} test set	1233 reflections (5.11%)	wwPDB-VP
Wilson B-factor (Å ²)	39.8	Xtrriage
Anisotropy	0.094	Xtrriage
Bulk solvent k_{sol} (e/Å ³), B_{sol} (Å ²)	0.35 , 38.5	EDS
L-test for twinning ²	$\langle L \rangle = 0.49$, $\langle L^2 \rangle = 0.32$	Xtrriage
Estimated twinning fraction	0.037 for -h,-k,l	Xtrriage
F_o, F_c correlation	0.95	EDS
Total number of atoms	3500	wwPDB-VP
Average B, all atoms (Å ²)	23.0	wwPDB-VP

Xtrriage's analysis on translational NCS is as follows: *The largest off-origin peak in the Patterson function is 5.06% of the height of the origin peak. No significant pseudotranslation is detected.*

¹Intensities estimated from amplitudes.

²Theoretical values of $\langle |L| \rangle$, $\langle L^2 \rangle$ for acentric reflections are 0.5, 0.333 respectively for untwinned datasets, and 0.375, 0.2 for perfectly twinned datasets.

5 Model quality [i](#)

5.1 Standard geometry [i](#)

Bond lengths and bond angles in the following residue types are not validated in this section: NAG, SO4, NA, GOL

The Z score for a bond length (or angle) is the number of standard deviations the observed value is removed from the expected value. A bond length (or angle) with $|Z| > 5$ is considered an outlier worth inspection. RMSZ is the root-mean-square of all Z scores of the bond lengths (or angles).

Mol	Chain	Bond lengths		Bond angles	
		RMSZ	# Z >5	RMSZ	# Z >5
1	A	0.30	0/1733	0.40	0/2342
1	B	0.32	0/1707	0.41	0/2306
All	All	0.31	0/3440	0.41	0/4648

Chiral center outliers are detected by calculating the chiral volume of a chiral center and verifying if the center is modelled as a planar moiety or with the opposite hand. A planarity outlier is detected by checking planarity of atoms in a peptide group, atoms in a mainchain group or atoms of a sidechain that are expected to be planar.

Mol	Chain	#Chirality outliers	#Planarity outliers
1	B	0	4

There are no bond length outliers.

There are no bond angle outliers.

There are no chirality outliers.

All (4) planarity outliers are listed below:

Mol	Chain	Res	Type	Group
1	B	154	PRO	Peptide
1	B	204	ASP	Peptide
1	B	207	ASN	Peptide
1	B	209	CYS	Peptide

5.2 Too-close contacts [i](#)

In the following table, the Non-H and H(model) columns list the number of non-hydrogen atoms and hydrogen atoms in the chain respectively. The H(added) column lists the number of hydrogen atoms added and optimized by MolProbity. The Clashes column lists the number of clashes within the asymmetric unit, whereas Symm-Clashes lists symmetry-related clashes.

Mol	Chain	Non-H	H(model)	H(added)	Clashes	Symm-Clashes
1	A	1691	0	1563	45	0
1	B	1666	0	1548	57	0
2	A	14	0	13	0	0
3	A	12	0	16	1	0
3	B	18	0	24	12	0
4	A	10	0	0	1	0
4	B	10	0	0	1	0
5	B	1	0	0	0	0
6	A	46	0	0	2	0
6	B	32	0	0	0	0
All	All	3500	0	3164	103	0

The all-atom clashscore is defined as the number of clashes found per 1000 atoms (including hydrogen atoms). The all-atom clashscore for this structure is 16.

All (103) close contacts within the same asymmetric unit are listed below, sorted by their clash magnitude.

Atom-1	Atom-2	Interatomic distance (Å)	Clash overlap (Å)
1:B:205:ARG:O	1:B:206:ARG:CZ	2.14	0.94
1:A:70:MET:H	1:A:70:MET:HE2	1.32	0.91
1:B:192:GLU:HG2	3:B:304:GOL:O3	1.75	0.87
1:B:205:ARG:O	1:B:206:ARG:HB2	1.78	0.83
1:B:205:ARG:O	1:B:206:ARG:NH1	2.12	0.83
1:B:205:ARG:NH2	1:B:207:ASN:HD21	1.79	0.80
1:B:205:ARG:CZ	1:B:207:ASN:HD21	1.94	0.79
1:A:178:ASP:HA	1:A:181:LYS:HE3	1.64	0.78
1:A:176:GLU:O	1:A:177:SER:HB3	1.84	0.77
1:A:174:SER:HB3	1:A:176:GLU:H	1.49	0.77
1:A:70:MET:H	1:A:70:MET:CE	1.98	0.77
1:B:136:ILE:HD13	1:B:201:MET:CE	2.16	0.75
1:B:161:MET:CE	1:B:213:SER:HB2	2.17	0.75
1:B:205:ARG:O	1:B:206:ARG:CB	2.36	0.74
1:A:148:GLU:HG2	1:A:149:GLY:N	2.03	0.74
1:B:1:ALA:N	1:B:2:PRO:CD	2.51	0.73
1:A:176:GLU:O	1:A:177:SER:CB	2.38	0.71
1:B:136:ILE:HG21	1:B:201:MET:HE1	1.70	0.71
1:A:140:HIS:HB3	3:A:306:GOL:H2	1.73	0.70
1:A:65:CYS:HB2	6:A:421:HOH:O	1.94	0.68
1:B:52:ASN:HD22	1:B:84:ASP:H	1.41	0.68
1:A:172:PHE:CE2	1:A:177:SER:HB2	2.31	0.66
1:A:148:GLU:CG	1:A:149:GLY:N	2.59	0.66
1:A:178:ASP:OD2	1:A:178:ASP:C	2.35	0.64

Continued on next page...

Continued from previous page...

Atom-1	Atom-2	Interatomic distance (Å)	Clash overlap (Å)
1:B:161:MET:HE2	1:B:213:SER:HB2	1.78	0.64
1:B:1:ALA:H2	1:B:2:PRO:CD	2.10	0.64
1:B:136:ILE:HD13	1:B:201:MET:HE2	1.81	0.62
1:B:1:ALA:N	1:B:2:PRO:HD3	2.14	0.62
1:B:1:ALA:H3	1:B:2:PRO:HD3	1.65	0.61
1:A:136:ILE:HG21	1:A:201:MET:CE	2.30	0.61
1:B:110:THR:HG22	1:B:219:THR:OG1	2.00	0.61
1:A:174:SER:CB	1:A:176:GLU:H	2.12	0.61
1:B:161:MET:HE1	1:B:213:SER:HB2	1.82	0.61
1:B:52:ASN:ND2	1:B:84:ASP:H	1.99	0.60
1:B:117:LYS:HZ3	1:B:213:SER:HA	1.67	0.60
1:A:173:GLU:O	1:A:174:SER:O	2.19	0.59
1:B:192:GLU:CG	3:B:304:GOL:O3	2.50	0.59
1:B:205:ARG:NH2	1:B:207:ASN:ND2	2.50	0.58
1:B:136:ILE:HD13	1:B:201:MET:HE1	1.85	0.58
1:B:148:GLU:HG2	1:B:149:GLY:N	2.19	0.57
1:B:185:VAL:HG21	1:B:201:MET:HG3	1.87	0.57
1:B:136:ILE:CD1	1:B:201:MET:HE1	2.35	0.57
1:B:136:ILE:HG21	1:B:201:MET:CE	2.35	0.56
1:B:136:ILE:CD1	1:B:201:MET:CE	2.82	0.56
1:B:120:LYS:HE2	1:B:124:LYS:HZ2	1.72	0.55
1:B:191:GLU:CG	3:B:304:GOL:H11	2.37	0.54
1:A:177:SER:C	1:A:179:ASN:H	2.10	0.53
1:A:52:ASN:HD22	1:A:84:ASP:H	1.55	0.53
1:A:177:SER:O	1:A:178:ASP:OD2	2.26	0.53
1:A:52:ASN:ND2	1:A:84:ASP:H	2.06	0.52
1:A:70:MET:HE2	1:A:70:MET:N	2.15	0.52
1:B:140:HIS:HD2	3:B:305:GOL:O2	1.92	0.52
1:B:1:ALA:H2	1:B:2:PRO:HD2	1.73	0.52
1:A:120:LYS:HD3	1:A:121:ALA:N	2.25	0.51
1:A:136:ILE:HG21	1:A:201:MET:HE1	1.91	0.51
1:A:115:ILE:HG22	1:A:116:PRO:O	2.10	0.50
1:B:191:GLU:HG2	3:B:304:GOL:H11	1.92	0.50
1:B:70:MET:HG2	1:B:133:SER:HB3	1.94	0.49
1:B:141:GLU:HB3	3:B:305:GOL:H11	1.94	0.49
1:A:16:VAL:HG21	1:A:196:GLY:O	2.12	0.49
1:A:8:ARG:HD3	1:A:198:TYR:CZ	2.47	0.49
1:A:74:PHE:CZ	1:A:218:PRO:HD3	2.48	0.49
1:A:136:ILE:HG21	1:A:201:MET:HE2	1.96	0.48
1:A:70:MET:CE	1:A:70:MET:N	2.74	0.47
1:B:117:LYS:NZ	1:B:213:SER:HA	2.28	0.47

Continued on next page...

Continued from previous page...

Atom-1	Atom-2	Interatomic distance (Å)	Clash overlap (Å)
1:B:141:GLU:H	3:B:305:GOL:H2	1.80	0.47
1:A:183:TRP:CD1	1:A:203:LYS:HB2	2.49	0.47
1:A:52:ASN:HD21	1:A:100:TYR:HD1	1.63	0.46
1:B:120:LYS:HE2	1:B:124:LYS:NZ	2.31	0.46
1:B:191:GLU:H	3:B:304:GOL:H11	1.81	0.46
1:A:185:VAL:HG21	1:A:201:MET:HG3	1.98	0.46
1:B:136:ILE:CD1	1:B:201:MET:HE2	2.45	0.46
1:A:153:GLU:HA	1:A:154:PRO:HD3	1.70	0.45
1:B:141:GLU:HB3	3:B:305:GOL:C1	2.46	0.45
4:A:307:SO4:O1	6:A:493:HOH:O	2.20	0.45
1:A:109:ASP:OD1	1:A:109:ASP:C	2.55	0.45
1:A:174:SER:HB3	1:A:176:GLU:N	2.26	0.45
1:B:191:GLU:HG3	3:B:304:GOL:H11	1.99	0.44
1:B:191:GLU:HG2	3:B:304:GOL:C1	2.47	0.44
1:A:110:THR:O	1:A:110:THR:CG2	2.66	0.44
1:A:124:LYS:O	1:A:128:THR:HB	2.18	0.44
1:A:172:PHE:CD2	1:A:177:SER:HB2	2.53	0.43
1:B:205:ARG:NE	1:B:207:ASN:HD21	2.15	0.43
1:A:172:PHE:CZ	1:A:177:SER:HB2	2.53	0.43
1:B:109:ASP:OD1	1:B:109:ASP:C	2.56	0.43
1:B:52:ASN:ND2	1:B:83:LEU:HD12	2.34	0.43
1:B:148:GLU:CG	1:B:149:GLY:N	2.82	0.43
1:A:177:SER:C	1:A:179:ASN:N	2.72	0.42
1:A:148:GLU:CG	1:A:149:GLY:H	2.32	0.42
1:B:205:ARG:O	1:B:206:ARG:CG	2.66	0.42
1:B:190:GLY:HA3	3:B:304:GOL:H2	2.00	0.42
1:A:195:MET:HE1	1:A:200:LYS:HE3	2.02	0.42
1:A:184:LEU:HD22	1:A:198:TYR:HD2	1.84	0.42
1:B:185:VAL:HB	1:B:199:VAL:HG13	2.02	0.42
1:B:146:TYR:O	1:B:194:GLY:HA2	2.20	0.41
1:A:207:ASN:ND2	1:A:207:ASN:H	2.17	0.41
1:B:205:ARG:O	1:B:206:ARG:NE	2.49	0.41
1:B:207:ASN:O	1:B:208:HIS:CB	2.69	0.41
1:A:109:ASP:HB2	1:A:219:THR:O	2.21	0.41
1:B:124:LYS:NZ	4:B:309:SO4:O2	2.46	0.41
1:B:8:ARG:HD3	1:B:198:TYR:CZ	2.56	0.40
1:A:161:MET:HE3	1:A:161:MET:HB2	1.79	0.40
1:B:184:LEU:HD23	1:B:184:LEU:HA	1.94	0.40

There are no symmetry-related clashes.

5.3 Torsion angles [i](#)

5.3.1 Protein backbone [i](#)

In the following table, the Percentiles column shows the percent Ramachandran outliers of the chain as a percentile score with respect to all X-ray entries followed by that with respect to entries of similar resolution.

The Analysed column shows the number of residues for which the backbone conformation was analysed, and the total number of residues.

Mol	Chain	Analysed	Favoured	Allowed	Outliers	Percentiles	
1	A	217/220 (99%)	203 (94%)	11 (5%)	3 (1%)	11	8
1	B	212/220 (96%)	201 (95%)	9 (4%)	2 (1%)	17	16
All	All	429/440 (98%)	404 (94%)	20 (5%)	5 (1%)	13	10

All (5) Ramachandran outliers are listed below:

Mol	Chain	Res	Type
1	A	174	SER
1	B	206	ARG
1	A	213	SER
1	B	213	SER
1	A	177	SER

5.3.2 Protein sidechains [i](#)

In the following table, the Percentiles column shows the percent sidechain outliers of the chain as a percentile score with respect to all X-ray entries followed by that with respect to entries of similar resolution.

The Analysed column shows the number of residues for which the sidechain conformation was analysed, and the total number of residues.

Mol	Chain	Analysed	Rotameric	Outliers	Percentiles	
1	A	178/178 (100%)	163 (92%)	15 (8%)	11	11
1	B	174/178 (98%)	161 (92%)	13 (8%)	13	14
All	All	352/356 (99%)	324 (92%)	28 (8%)	12	12

All (28) residues with a non-rotameric sidechain are listed below:

Mol	Chain	Res	Type
1	A	3	ARG

Continued on next page...

Continued from previous page...

Mol	Chain	Res	Type
1	A	70	MET
1	A	89	TYR
1	A	110	THR
1	A	117	LYS
1	A	144	LEU
1	A	156	CYS
1	A	157	SER
1	A	175	THR
1	A	176	GLU
1	A	178	ASP
1	A	184	LEU
1	A	192	GLU
1	A	201	MET
1	A	206	ARG
1	B	4	SER
1	B	89	TYR
1	B	110	THR
1	B	120	LYS
1	B	155	ASP
1	B	173	GLU
1	B	174	SER
1	B	184	LEU
1	B	192	GLU
1	B	195	MET
1	B	201	MET
1	B	206	ARG
1	B	209	CYS

Sometimes sidechains can be flipped to improve hydrogen bonding and reduce clashes. All (9) such sidechains are listed below:

Mol	Chain	Res	Type
1	A	37	GLN
1	A	52	ASN
1	A	80	ASN
1	A	140	HIS
1	A	207	ASN
1	B	37	GLN
1	B	52	ASN
1	B	140	HIS
1	B	207	ASN

5.3.3 RNA [i](#)

There are no RNA molecules in this entry.

5.4 Non-standard residues in protein, DNA, RNA chains [i](#)

There are no non-standard protein/DNA/RNA residues in this entry.

5.5 Carbohydrates [i](#)

There are no monosaccharides in this entry.

5.6 Ligand geometry [i](#)

Of 11 ligands modelled in this entry, 1 is monoatomic - leaving 10 for Mogul analysis.

In the following table, the Counts columns list the number of bonds (or angles) for which Mogul statistics could be retrieved, the number of bonds (or angles) that are observed in the model and the number of bonds (or angles) that are defined in the Chemical Component Dictionary. The Link column lists molecule types, if any, to which the group is linked. The Z score for a bond length (or angle) is the number of standard deviations the observed value is removed from the expected value. A bond length (or angle) with $|Z| > 2$ is considered an outlier worth inspection. RMSZ is the root-mean-square of all Z scores of the bond lengths (or angles).

Mol	Type	Chain	Res	Link	Bond lengths			Bond angles		
					Counts	RMSZ	$\# Z > 2$	Counts	RMSZ	$\# Z > 2$
3	GOL	A	303	-	5,5,5	0.47	0	5,5,5	0.27	0
4	SO4	B	310	-	4,4,4	0.15	0	6,6,6	0.22	0
3	GOL	B	302	-	5,5,5	0.40	0	5,5,5	0.17	0
3	GOL	B	305	-	5,5,5	0.39	0	5,5,5	0.31	0
4	SO4	A	308	-	4,4,4	0.14	0	6,6,6	0.09	0
4	SO4	A	307	-	4,4,4	0.18	0	6,6,6	0.12	0
2	NAG	A	301	1	14,14,15	0.54	0	17,19,21	0.67	0
3	GOL	B	304	-	5,5,5	0.34	0	5,5,5	0.42	0
4	SO4	B	309	-	4,4,4	0.13	0	6,6,6	0.08	0
3	GOL	A	306	-	5,5,5	0.33	0	5,5,5	0.44	0

In the following table, the Chirals column lists the number of chiral outliers, the number of chiral centers analysed, the number of these observed in the model and the number defined in the Chemical Component Dictionary. Similar counts are reported in the Torsion and Rings columns. '2' means no outliers of that kind were identified.

Mol	Type	Chain	Res	Link	Chirals	Torsions	Rings
3	GOL	A	303	-	-	2/4/4/4	-
3	GOL	B	302	-	-	2/4/4/4	-
3	GOL	B	305	-	-	2/4/4/4	-
2	NAG	A	301	1	-	2/6/23/26	0/1/1/1
3	GOL	B	304	-	-	0/4/4/4	-
3	GOL	A	306	-	-	3/4/4/4	-

There are no bond length outliers.

There are no bond angle outliers.

There are no chirality outliers.

All (11) torsion outliers are listed below:

Mol	Chain	Res	Type	Atoms
3	A	303	GOL	C1-C2-C3-O3
3	B	302	GOL	C1-C2-C3-O3
3	B	305	GOL	C1-C2-C3-O3
3	B	302	GOL	O2-C2-C3-O3
2	A	301	NAG	O5-C5-C6-O6
2	A	301	NAG	C4-C5-C6-O6
3	A	303	GOL	O2-C2-C3-O3
3	A	306	GOL	O1-C1-C2-O2
3	B	305	GOL	O2-C2-C3-O3
3	A	306	GOL	C1-C2-C3-O3
3	A	306	GOL	O1-C1-C2-C3

There are no ring outliers.

5 monomers are involved in 15 short contacts:

Mol	Chain	Res	Type	Clashes	Symm-Clashes
3	B	305	GOL	4	0
4	A	307	SO4	1	0
3	B	304	GOL	8	0
4	B	309	SO4	1	0
3	A	306	GOL	1	0

5.7 Other polymers [i](#)

There are no such residues in this entry.

5.8 Polymer linkage issues

There are no chain breaks in this entry.

6 Fit of model and data

6.1 Protein, DNA and RNA chains

In the following table, the column labelled ‘#RSRZ> 2’ contains the number (and percentage) of RSRZ outliers, followed by percent RSRZ outliers for the chain as percentile scores relative to all X-ray entries and entries of similar resolution. The OWAB column contains the minimum, median, 95th percentile and maximum values of the occupancy-weighted average B-factor per residue. The column labelled ‘Q< 0.9’ lists the number of (and percentage) of residues with an average occupancy less than 0.9.

Mol	Chain	Analysed	<RSRZ>	#RSRZ>2	OWAB(Å ²)	Q<0.9
1	A	219/220 (99%)	0.18	19 (8%) 10 8	10, 19, 47, 55	0
1	B	216/220 (98%)	0.16	17 (7%) 12 11	8, 19, 46, 58	0
All	All	435/440 (98%)	0.17	36 (8%) 11 10	8, 19, 47, 58	0

All (36) RSRZ outliers are listed below:

Mol	Chain	Res	Type	RSRZ
1	A	156	CYS	5.7
1	A	212	ALA	5.4
1	B	157	SER	5.3
1	B	179	ASN	5.3
1	B	159	GLU	3.9
1	A	206	ARG	3.8
1	A	159	GLU	3.7
1	A	220	VAL	3.5
1	B	103	LYS	3.3
1	B	104	TYR	3.3
1	B	156	CYS	3.3
1	B	208	HIS	3.2
1	A	160	ASP	3.2
1	A	166	LEU	3.2
1	A	3	ARG	3.1
1	B	209	CYS	3.1
1	A	207	ASN	3.0
1	A	155	ASP	2.9
1	B	158	SER	2.9
1	B	206	ARG	2.8
1	B	155	ASP	2.8
1	B	174	SER	2.7
1	A	213	SER	2.6
1	B	3	ARG	2.6

Continued on next page...

Continued from previous page...

Mol	Chain	Res	Type	RSRZ
1	A	179	ASN	2.6
1	A	209	CYS	2.5
1	A	53	LEU	2.4
1	B	160	ASP	2.3
1	A	31	THR	2.2
1	B	207	ASN	2.2
1	A	177	SER	2.2
1	A	87	GLU	2.2
1	A	158	SER	2.1
1	B	213	SER	2.1
1	B	33	ALA	2.0
1	A	33	ALA	2.0

6.2 Non-standard residues in protein, DNA, RNA chains [i](#)

There are no non-standard protein/DNA/RNA residues in this entry.

6.3 Carbohydrates [i](#)

There are no monosaccharides in this entry.

6.4 Ligands [i](#)

In the following table, the Atoms column lists the number of modelled atoms in the group and the number defined in the chemical component dictionary. The B-factors column lists the minimum, median, 95th percentile and maximum values of B factors of atoms in the group. The column labelled 'Q< 0.9' lists the number of atoms with occupancy less than 0.9.

Mol	Type	Chain	Res	Atoms	RSCC	RSR	B-factors(Å ²)	Q<0.9
3	GOL	B	305	6/6	0.57	0.31	70,78,81,85	0
3	GOL	B	302	6/6	0.60	0.28	69,72,75,75	0
3	GOL	A	306	6/6	0.71	0.33	49,52,61,67	0
3	GOL	A	303	6/6	0.89	0.27	50,50,57,60	0
2	NAG	A	301	14/15	0.89	0.21	59,69,73,75	0
5	NA	B	300	1/1	0.89	0.45	41,41,41,41	0
3	GOL	B	304	6/6	0.90	0.28	57,58,65,78	0
4	SO4	B	309	5/5	0.97	0.16	70,70,72,73	0
4	SO4	A	308	5/5	0.98	0.13	61,61,67,70	0
4	SO4	B	310	5/5	0.99	0.13	39,40,48,52	0
4	SO4	A	307	5/5	1.00	0.11	33,37,39,40	0

6.5 Other polymers [i](#)

There are no such residues in this entry.