



Full wwPDB X-ray Structure Validation Report ⓘ

Feb 12, 2024 – 03:18 AM EST

PDB ID : 3HCP
Title : Human ferrochelatase with Mn and deuteroporphyrin bound
Authors : Medlock, A.E.; Dailey, H.A.; Lanzilotta, W.N.
Deposited on : 2009-05-06
Resolution : 2.00 Å(reported)

This is a Full wwPDB X-ray Structure Validation Report for a publicly released PDB entry.

We welcome your comments at validation@mail.wwpdb.org

A user guide is available at

<https://www.wwpdb.org/validation/2017/XrayValidationReportHelp>

with specific help available everywhere you see the ⓘ symbol.

The types of validation reports are described at

<http://www.wwpdb.org/validation/2017/FAQs#types>.

The following versions of software and data (see [references ⓘ](#)) were used in the production of this report:

MolProbity : 4.02b-467
Mogul : 1.8.5 (274361), CSD as541be (2020)
Xtriage (Phenix) : 1.13
EDS : 2.36
buster-report : 1.1.7 (2018)
Percentile statistics : 20191225.v01 (using entries in the PDB archive December 25th 2019)
Refmac : 5.8.0158
CCP4 : 7.0.044 (Gargrove)
Ideal geometry (proteins) : Engh & Huber (2001)
Ideal geometry (DNA, RNA) : Parkinson et al. (1996)
Validation Pipeline (wwPDB-VP) : 2.36

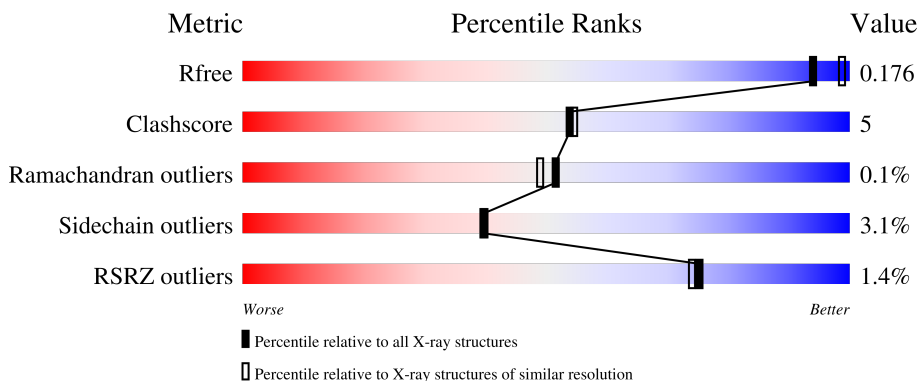
1 Overall quality at a glance

The following experimental techniques were used to determine the structure:

X-RAY DIFFRACTION

The reported resolution of this entry is 2.00 Å.

Percentile scores (ranging between 0-100) for global validation metrics of the entry are shown in the following graphic. The table shows the number of entries on which the scores are based.



Metric	Whole archive (#Entries)	Similar resolution (#Entries, resolution range(Å))
R_{free}	130704	8085 (2.00-2.00)
Clashscore	141614	9178 (2.00-2.00)
Ramachandran outliers	138981	9054 (2.00-2.00)
Sidechain outliers	138945	9053 (2.00-2.00)
RSRZ outliers	127900	7900 (2.00-2.00)

The table below summarises the geometric issues observed across the polymeric chains and their fit to the electron density. The red, orange, yellow and green segments of the lower bar indicate the fraction of residues that contain outliers for ≥ 3 , 2, 1 and 0 types of geometric quality criteria respectively. A grey segment represents the fraction of residues that are not modelled. The numeric value for each fraction is indicated below the corresponding segment, with a dot representing fractions $\leq 5\%$. The upper red bar (where present) indicates the fraction of residues that have poor fit to the electron density. The numeric value is given above the bar.

Mol	Chain	Length	Quality of chain
1	A	359	 88% 11% .
1	B	359	 86% 13% .

The following table lists non-polymeric compounds, carbohydrate monomers and non-standard residues in protein, DNA, RNA chains that are outliers for geometric or electron-density-fit criteria:

Mol	Type	Chain	Res	Chirality	Geometry	Clashes	Electron density
6	FDE	A	425	X	-	-	-
6	FDE	B	925	X	-	-	-

2 Entry composition [i](#)

There are 7 unique types of molecules in this entry. The entry contains 6583 atoms, of which 0 are hydrogens and 0 are deuteriums.

In the tables below, the ZeroOcc column contains the number of atoms modelled with zero occupancy, the AltConf column contains the number of residues with at least one atom in alternate conformation and the Trace column contains the number of residues modelled with at most 2 atoms.

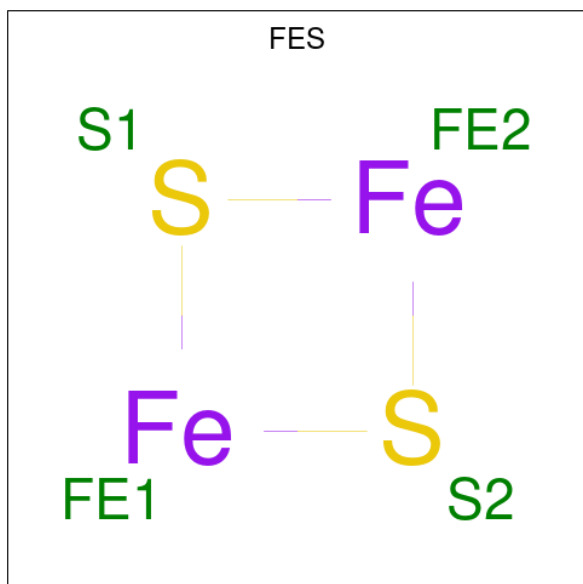
- Molecule 1 is a protein called Ferrochelatase, mitochondrial.

Mol	Chain	Residues	Atoms					ZeroOcc	AltConf	Trace
			Total	C	N	O	S			
1	A	359	2901	1845	506	532	18	0	3	0
1	B	359	2930	1871	505	536	18	0	9	0

There are 2 discrepancies between the modelled and reference sequences:

Chain	Residue	Modelled	Actual	Comment	Reference
A	110	ALA	PHE	variant	UNP P22830
B	610	ALA	PHE	variant	UNP P22830

- Molecule 2 is FE2/S2 (INORGANIC) CLUSTER (three-letter code: FES) (formula: Fe₂S₂).



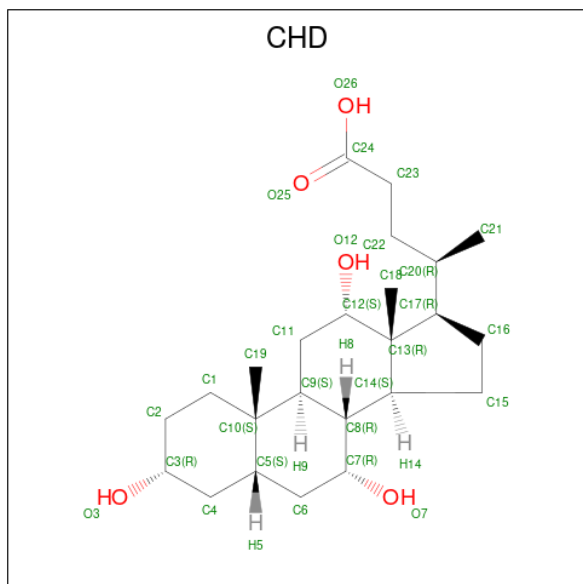
Mol	Chain	Residues	Atoms			ZeroOcc	AltConf
			Total	Fe	S		
2	A	1	4	2	2	0	0

Continued on next page...

Continued from previous page...

Mol	Chain	Residues	Atoms			ZeroOcc	AltConf
			Total	Fe	S		
2	B	1	4	2	2	0	0

- Molecule 3 is CHOLIC ACID (three-letter code: CHD) (formula: $C_{24}H_{40}O_5$).



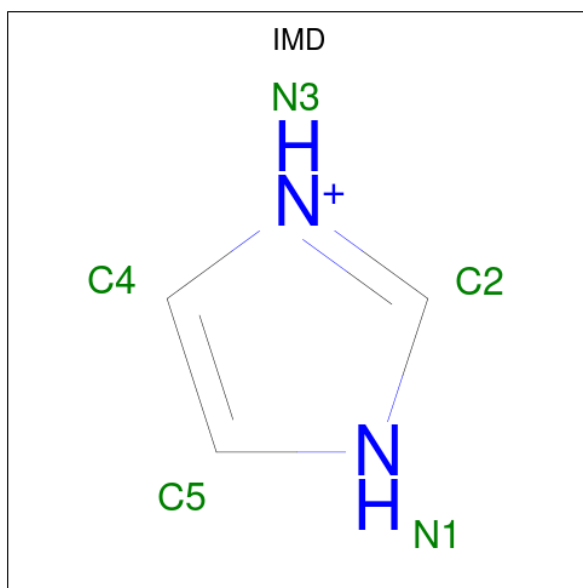
Mol	Chain	Residues	Atoms			ZeroOcc	AltConf
			Total	C	O		
3	A	1	29	24	5	0	0
3	A	1	29	24	5	0	0
3	B	1	29	24	5	0	0
3	B	1	29	24	5	0	0

- Molecule 4 is GLYCEROL (three-letter code: GOL) (formula: $C_3H_8O_3$).



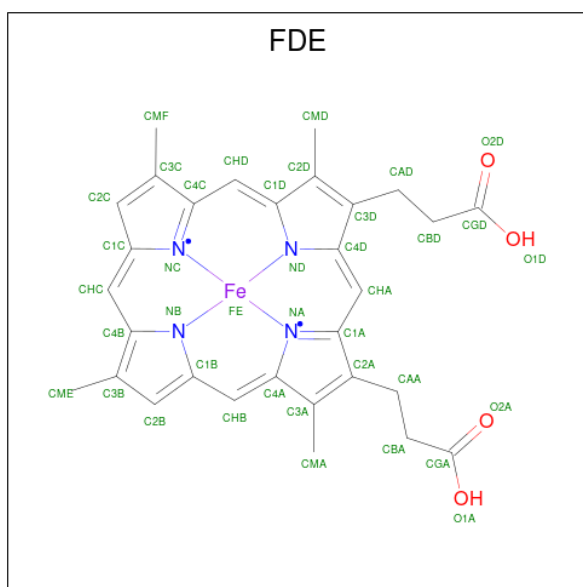
Mol	Chain	Residues	Atoms			ZeroOcc	AltConf
4	A	1	Total	C	O	0	0
			6	3	3		

- Molecule 5 is IMIDAZOLE (three-letter code: IMD) (formula: $C_3H_5N_2$).



Mol	Chain	Residues	Atoms			ZeroOcc	AltConf
5	A	1	Total	C	N	0	0
			5	3	2		
5	B	1	Total	C	N	0	0
			5	3	2		

- Molecule 6 is FE(III) DEUTEROPORPHYRIN IX (three-letter code: FDE) (formula: $C_{30}H_{28}FeN_4O_4$).



Mol	Chain	Residues	Atoms				ZeroOcc	AltConf	
			Total	C	Fe	N			O
6	A	1	39	30	1	4	4	0	0
6	B	1	39	30	1	4	4	0	0

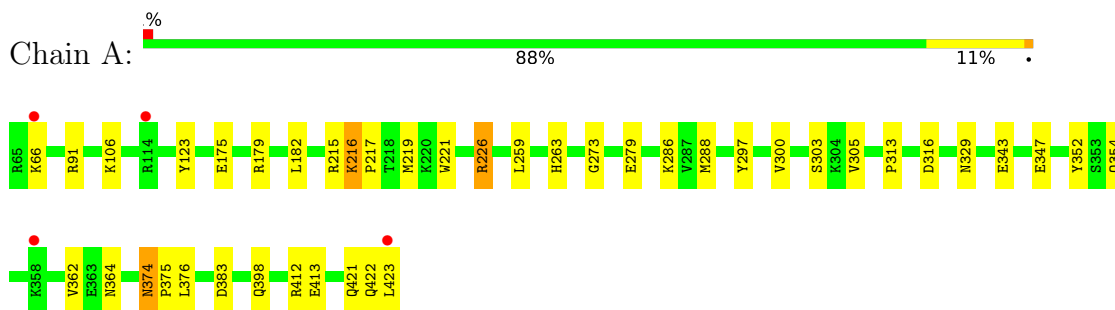
- Molecule 7 is water.

Mol	Chain	Residues	Atoms		ZeroOcc	AltConf
			Total	O		
7	A	280	280	280	0	0
7	B	254	254	254	0	0

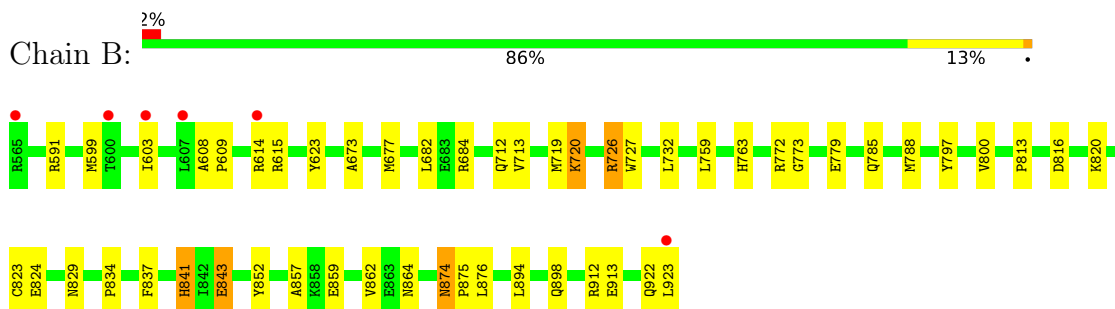
3 Residue-property plots [i](#)

These plots are drawn for all protein, RNA, DNA and oligosaccharide chains in the entry. The first graphic for a chain summarises the proportions of the various outlier classes displayed in the second graphic. The second graphic shows the sequence view annotated by issues in geometry and electron density. Residues are color-coded according to the number of geometric quality criteria for which they contain at least one outlier: green = 0, yellow = 1, orange = 2 and red = 3 or more. A red dot above a residue indicates a poor fit to the electron density ($RSRZ > 2$). Stretches of 2 or more consecutive residues without any outlier are shown as a green connector. Residues present in the sample, but not in the model, are shown in grey.

- Molecule 1: Ferrochelatase, mitochondrial



- Molecule 1: Ferrochelatase, mitochondrial



4 Data and refinement statistics

Property	Value	Source
Space group	P 21 21 21	Depositor
Cell constants a, b, c, α , β , γ	87.57Å 93.69Å 109.48Å 90.00° 90.00° 90.00°	Depositor
Resolution (Å)	46.83 – 2.00 46.42 – 2.00	Depositor EDS
% Data completeness (in resolution range)	99.3 (46.83-2.00) 99.3 (46.42-2.00)	Depositor EDS
R_{merge}	0.09	Depositor
R_{sym}	0.08	Depositor
$\langle I/\sigma(I) \rangle$ ¹	5.90 (at 2.00Å)	Xtrriage
Refinement program	REFMAC 5.2.0019, CNS	Depositor
R, R_{free}	0.170 , 0.201 0.173 , 0.176	Depositor DCC
R_{free} test set	3077 reflections (5.06%)	wwPDB-VP
Wilson B-factor (Å ²)	16.8	Xtrriage
Anisotropy	0.072	Xtrriage
Bulk solvent k_{sol} (e/Å ³), B_{sol} (Å ²)	0.35 , 51.8	EDS
L-test for twinning ²	$\langle L \rangle = 0.50$, $\langle L^2 \rangle = 0.33$	Xtrriage
Estimated twinning fraction	No twinning to report.	Xtrriage
F_o, F_c correlation	0.96	EDS
Total number of atoms	6583	wwPDB-VP
Average B, all atoms (Å ²)	17.0	wwPDB-VP

Xtrriage's analysis on translational NCS is as follows: *The analyses of the Patterson function reveals a significant off-origin peak that is 47.11 % of the origin peak, indicating pseudo-translational symmetry. The chance of finding a peak of this or larger height randomly in a structure without pseudo-translational symmetry is equal to 1.0403e-04. The detected translational NCS is most likely also responsible for the elevated intensity ratio.*

¹Intensities estimated from amplitudes.

²Theoretical values of $\langle |L| \rangle$, $\langle L^2 \rangle$ for acentric reflections are 0.5, 0.333 respectively for untwinned datasets, and 0.375, 0.2 for perfectly twinned datasets.

5 Model quality [i](#)

5.1 Standard geometry [i](#)

Bond lengths and bond angles in the following residue types are not validated in this section: FES, FDE, GOL, IMD, CHD

The Z score for a bond length (or angle) is the number of standard deviations the observed value is removed from the expected value. A bond length (or angle) with $|Z| > 5$ is considered an outlier worth inspection. RMSZ is the root-mean-square of all Z scores of the bond lengths (or angles).

Mol	Chain	Bond lengths		Bond angles	
		RMSZ	# Z >5	RMSZ	# Z >5
1	A	0.74	0/2979	0.73	4/4035 (0.1%)
1	B	0.72	0/3027	0.71	4/4099 (0.1%)
All	All	0.73	0/6006	0.72	8/8134 (0.1%)

There are no bond length outliers.

All (8) bond angle outliers are listed below:

Mol	Chain	Res	Type	Atoms	Z	Observed(°)	Ideal(°)
1	A	226	ARG	NE-CZ-NH1	8.29	124.45	120.30
1	A	226	ARG	NE-CZ-NH2	-7.88	116.36	120.30
1	B	726	ARG	NE-CZ-NH1	6.96	123.78	120.30
1	A	91	ARG	NE-CZ-NH1	6.44	123.52	120.30
1	A	91	ARG	NE-CZ-NH2	-6.30	117.15	120.30
1	B	726	ARG	NE-CZ-NH2	-6.01	117.30	120.30
1	B	591	ARG	NE-CZ-NH1	5.42	123.01	120.30
1	B	772	ARG	NE-CZ-NH1	-5.38	117.61	120.30

There are no chirality outliers.

There are no planarity outliers.

5.2 Too-close contacts [i](#)

In the following table, the Non-H and H(model) columns list the number of non-hydrogen atoms and hydrogen atoms in the chain respectively. The H(added) column lists the number of hydrogen atoms added and optimized by MolProbity. The Clashes column lists the number of clashes within the asymmetric unit, whereas Symm-Clashes lists symmetry-related clashes.

Mol	Chain	Non-H	H(model)	H(added)	Clashes	Symm-Clashes
1	A	2901	0	2917	30	0

Continued on next page...

Continued from previous page...

Mol	Chain	Non-H	H(model)	H(added)	Clashes	Symm-Clashes
1	B	2930	0	2966	37	0
2	A	4	0	0	0	0
2	B	4	0	0	0	0
3	A	58	0	78	2	0
3	B	58	0	78	3	0
4	A	6	0	8	0	0
5	A	5	0	4	0	0
5	B	5	0	4	0	0
6	A	39	0	25	2	0
6	B	39	0	24	2	0
7	A	280	0	0	4	0
7	B	254	0	0	6	0
All	All	6583	0	6104	64	0

The all-atom clashscore is defined as the number of clashes found per 1000 atoms (including hydrogen atoms). The all-atom clashscore for this structure is 5.

All (64) close contacts within the same asymmetric unit are listed below, sorted by their clash magnitude.

Atom-1	Atom-2	Interatomic distance (Å)	Clash overlap (Å)
1:A:398:GLN:HE22	1:B:797:TYR:H	1.18	0.91
1:A:297:TYR:H	1:B:898:GLN:HE22	1.23	0.84
1:A:263:HIS:NE2	1:A:343:GLU:HG3	1.93	0.83
1:A:383[B]:ASP:OD2	7:A:505:HOH:O	1.98	0.81
1:B:623:TYR:OH	6:B:925:FDE:O2A	1.97	0.81
1:B:763:HIS:HD2	7:B:84:HOH:O	1.68	0.75
1:B:843:GLU:OE2	7:B:523:HOH:O	2.09	0.70
1:B:823:CYS:SG	1:B:862[B]:VAL:HG12	2.32	0.69
1:A:175:GLU:O	1:A:179:ARG:HG2	1.94	0.67
1:B:922:GLN:O	1:B:923:LEU:HB2	1.97	0.65
1:A:286:LYS:NZ	7:A:632:HOH:O	2.30	0.63
1:B:912:ARG:NH1	1:B:913:GLU:OE2	2.32	0.61
1:A:398:GLN:HE22	1:B:797:TYR:N	1.96	0.58
1:A:422:GLN:O	1:A:423:LEU:HB2	2.04	0.57
1:B:874:ASN:C	1:B:874:ASN:HD22	2.07	0.57
1:A:263:HIS:CE1	1:A:343:GLU:HG3	2.39	0.57
1:B:720[B]:LYS:HE2	1:B:923:LEU:HD13	1.86	0.56
1:A:297:TYR:N	1:B:898:GLN:HE22	2.01	0.56
1:B:720[A]:LYS:HZ1	1:B:894:LEU:CD2	2.18	0.56
3:A:2:CHD:H183	3:A:2:CHD:H212	1.87	0.56
1:A:179:ARG:HH11	1:A:179:ARG:HG3	1.71	0.56

Continued on next page...

Continued from previous page...

Atom-1	Atom-2	Interatomic distance (Å)	Clash overlap (Å)
1:A:273:GLY:HA2	1:B:813:PRO:HG3	1.88	0.56
1:A:412:ARG:NH1	1:A:413:GLU:OE2	2.40	0.54
1:A:123:TYR:OH	6:A:425:FDE:O2A	2.21	0.54
1:B:615:ARG:HD2	3:B:1:CHD:H232	1.89	0.53
1:A:226:ARG:HD3	1:A:279:GLU:OE2	2.09	0.53
1:A:288:MET:HG3	1:A:297:TYR:CD2	2.44	0.53
1:A:374:ASN:C	1:A:374:ASN:HD22	2.11	0.53
1:A:374:ASN:ND2	1:A:376:LEU:H	2.07	0.52
1:A:179:ARG:HG3	1:A:179:ARG:NH1	2.24	0.52
1:A:216:LYS:HG3	1:A:217:PRO:HD2	1.92	0.52
1:B:829:ASN:HD22	1:B:864:ASN:HB2	1.75	0.51
1:B:837[B]:PHE:CD2	1:B:841:HIS:HE1	2.28	0.51
1:B:732:LEU:HD22	1:B:876:LEU:HD11	1.93	0.51
1:A:329:ASN:HD22	1:A:364:ASN:HB2	1.76	0.51
1:A:300:VAL:HG12	1:A:313:PRO:HG2	1.93	0.50
1:B:837[B]:PHE:CD2	1:B:841:HIS:CE1	3.00	0.50
1:B:726:ARG:HD3	1:B:779:GLU:OE2	2.12	0.49
1:B:859[A]:GLU:HG3	7:B:496:HOH:O	2.11	0.49
1:B:673:ALA:O	1:B:677:MET:HG3	2.11	0.49
1:B:834:PRO:HG2	7:B:210:HOH:O	2.13	0.49
1:B:857:ALA:HB1	1:B:862[B]:VAL:HG11	1.95	0.48
1:A:374:ASN:HD22	1:A:375:PRO:N	2.11	0.48
1:B:614:ARG:HG3	7:B:358:HOH:O	2.11	0.48
3:B:1:CHD:H192	6:B:925:FDE:HMF1	1.95	0.47
1:B:608:ALA:HB3	1:B:609:PRO:HD3	1.95	0.47
1:B:816:ASP:HB3	1:B:852:TYR:CE1	2.50	0.47
1:A:374:ASN:HD22	1:A:376:LEU:H	1.63	0.47
1:B:874:ASN:HD22	1:B:875:PRO:N	2.13	0.47
1:A:221:TRP:H	1:A:421:GLN:NE2	2.13	0.46
1:B:788:MET:HG3	1:B:797:TYR:CD2	2.53	0.44
1:B:720[B]:LYS:HG2	7:B:482:HOH:O	2.17	0.43
1:A:303:SER:HB3	1:A:347:GLU:OE2	2.18	0.43
1:B:677:MET:HB3	1:B:682:LEU:HD12	2.00	0.43
1:A:288:MET:HG3	1:A:297:TYR:CE2	2.54	0.42
1:B:720[B]:LYS:CE	1:B:923:LEU:HD13	2.50	0.42
1:A:215:ARG:HD2	7:A:582:HOH:O	2.19	0.42
7:A:632:HOH:O	1:B:785:GLN:CG	2.67	0.42
1:A:313:PRO:HG3	1:B:773:GLY:HA2	2.01	0.42
1:B:599:MET:HB2	3:B:1:CHD:H62	2.02	0.41
3:A:2:CHD:H192	6:A:425:FDE:HMF1	2.02	0.41
1:B:820:LYS:O	1:B:824:GLU:HG3	2.21	0.40

Continued on next page...

Continued from previous page...

Atom-1	Atom-2	Interatomic distance (Å)	Clash overlap (Å)
1:A:316:ASP:HB3	1:A:352:TYR:CE1	2.56	0.40
1:B:800:VAL:HG12	1:B:813:PRO:HG2	2.04	0.40

There are no symmetry-related clashes.

5.3 Torsion angles [i](#)

5.3.1 Protein backbone [i](#)

In the following table, the Percentiles column shows the percent Ramachandran outliers of the chain as a percentile score with respect to all X-ray entries followed by that with respect to entries of similar resolution.

The Analysed column shows the number of residues for which the backbone conformation was analysed, and the total number of residues.

Mol	Chain	Analysed	Favoured	Allowed	Outliers	Percentiles	
1	A	360/359 (100%)	354 (98%)	6 (2%)	0	100	100
1	B	366/359 (102%)	357 (98%)	8 (2%)	1 (0%)	41	37
All	All	726/718 (101%)	711 (98%)	14 (2%)	1 (0%)	51	49

All (1) Ramachandran outliers are listed below:

Mol	Chain	Res	Type
1	B	603	ILE

5.3.2 Protein sidechains [i](#)

In the following table, the Percentiles column shows the percent sidechain outliers of the chain as a percentile score with respect to all X-ray entries followed by that with respect to entries of similar resolution.

The Analysed column shows the number of residues for which the sidechain conformation was analysed, and the total number of residues.

Mol	Chain	Analysed	Rotameric	Outliers	Percentiles	
1	A	326/323 (101%)	316 (97%)	10 (3%)	40	40
1	B	332/323 (103%)	321 (97%)	11 (3%)	38	37
All	All	658/646 (102%)	637 (97%)	21 (3%)	40	38

All (21) residues with a non-rotameric sidechain are listed below:

Mol	Chain	Res	Type
1	A	66	LYS
1	A	106	LYS
1	A	182	LEU
1	A	216	LYS
1	A	219	MET
1	A	259	LEU
1	A	305	VAL
1	A	354	GLN
1	A	362	VAL
1	A	374	ASN
1	B	684	ARG
1	B	712	GLN
1	B	713	VAL
1	B	719	MET
1	B	720[A]	LYS
1	B	720[B]	LYS
1	B	727	TRP
1	B	759	LEU
1	B	841	HIS
1	B	843	GLU
1	B	874	ASN

Sometimes sidechains can be flipped to improve hydrogen bonding and reduce clashes. All (17) such sidechains are listed below:

Mol	Chain	Res	Type
1	A	231	HIS
1	A	329	ASN
1	A	364	ASN
1	A	374	ASN
1	A	398	GLN
1	A	421	GLN
1	B	653	ASN
1	B	763	HIS
1	B	802	GLN
1	B	814	GLN
1	B	829	ASN
1	B	841	HIS
1	B	854	GLN
1	B	864	ASN
1	B	874	ASN
1	B	898	GLN

Continued on next page...

Continued from previous page...

Mol	Chain	Res	Type
1	B	921	GLN

5.3.3 RNA [i](#)

There are no RNA molecules in this entry.

5.4 Non-standard residues in protein, DNA, RNA chains [i](#)

There are no non-standard protein/DNA/RNA residues in this entry.

5.5 Carbohydrates [i](#)

There are no monosaccharides in this entry.

5.6 Ligand geometry [i](#)

11 ligands are modelled in this entry.

In the following table, the Counts columns list the number of bonds (or angles) for which Mogul statistics could be retrieved, the number of bonds (or angles) that are observed in the model and the number of bonds (or angles) that are defined in the Chemical Component Dictionary. The Link column lists molecule types, if any, to which the group is linked. The Z score for a bond length (or angle) is the number of standard deviations the observed value is removed from the expected value. A bond length (or angle) with $|Z| > 2$ is considered an outlier worth inspection. RMSZ is the root-mean-square of all Z scores of the bond lengths (or angles).

Mol	Type	Chain	Res	Link	Bond lengths			Bond angles		
					Counts	RMSZ	# Z > 2	Counts	RMSZ	# Z > 2
3	CHD	B	4	-	32,32,32	0.82	0	51,51,51	1.41	8 (15%)
5	IMD	A	424	6	3,5,5	0.44	0	4,5,5	0.57	0
2	FES	A	501	1	0,4,4	-	-	-		
2	FES	B	501	1	0,4,4	-	-	-		
6	FDE	A	425	5	44,46,46	2.50	18 (40%)	52,76,76	4.51	30 (57%)
5	IMD	B	924	6	3,5,5	0.33	0	4,5,5	0.45	0
4	GOL	A	1	-	5,5,5	0.47	0	5,5,5	1.46	2 (40%)
3	CHD	A	2	-	32,32,32	0.63	0	51,51,51	1.34	5 (9%)
6	FDE	B	925	5	44,46,46	2.74	21 (47%)	52,76,76	5.06	34 (65%)
3	CHD	A	3	-	32,32,32	0.75	0	51,51,51	1.29	6 (11%)
3	CHD	B	1	-	32,32,32	0.67	0	51,51,51	1.36	10 (19%)

In the following table, the Chirals column lists the number of chiral outliers, the number of chiral centers analysed, the number of these observed in the model and the number defined in the Chemical Component Dictionary. Similar counts are reported in the Torsion and Rings columns. '-' means no outliers of that kind were identified.

Mol	Type	Chain	Res	Link	Chirals	Torsions	Rings
3	CHD	B	4	-	-	0/9/74/74	0/4/4/4
5	IMD	A	424	6	-	-	0/1/1/1
2	FES	A	501	1	-	-	0/1/1/1
6	FDE	A	425	5	1/1/3/7	2/10/50/50	-
2	FES	B	501	1	-	-	0/1/1/1
5	IMD	B	924	6	-	-	0/1/1/1
4	GOL	A	1	-	-	2/4/4/4	-
3	CHD	A	2	-	-	7/9/74/74	0/4/4/4
6	FDE	B	925	5	1/1/3/7	2/10/50/50	-
3	CHD	A	3	-	-	2/9/74/74	0/4/4/4
3	CHD	B	1	-	-	4/9/74/74	0/4/4/4

All (39) bond length outliers are listed below:

Mol	Chain	Res	Type	Atoms	Z	Observed(Å)	Ideal(Å)
6	B	925	FDE	C2A-C3A	6.40	1.50	1.36
6	A	425	FDE	C2A-C3A	5.98	1.49	1.36
6	B	925	FDE	C3D-C2D	5.81	1.49	1.36
6	A	425	FDE	C3D-C2D	5.76	1.49	1.36
6	B	925	FDE	CHA-C4D	5.43	1.48	1.38
6	A	425	FDE	CHA-C4D	5.03	1.48	1.38
6	B	925	FDE	CHA-C1A	4.58	1.49	1.39
6	B	925	FDE	FE-ND	4.56	2.13	1.95
6	B	925	FDE	C1B-CHB	-4.50	1.34	1.43
6	B	925	FDE	CHC-C1C	4.45	1.50	1.39
6	A	425	FDE	CHA-C1A	3.94	1.48	1.39
6	A	425	FDE	FE-ND	3.89	2.10	1.95
6	A	425	FDE	CHC-C1C	3.71	1.48	1.39
6	A	425	FDE	C1B-CHB	-3.62	1.36	1.43
6	A	425	FDE	C1C-NC	-3.46	1.33	1.40
6	B	925	FDE	C4A-NA	-3.38	1.34	1.40
6	A	425	FDE	CHD-C4C	-3.35	1.31	1.39
6	B	925	FDE	C1D-ND	-3.25	1.33	1.39
6	B	925	FDE	C1C-NC	-3.18	1.33	1.40
6	B	925	FDE	C4A-C3A	3.14	1.50	1.44
6	B	925	FDE	CHD-C4C	-3.14	1.32	1.39
6	B	925	FDE	CHD-C1D	-3.11	1.32	1.38

Continued on next page...

Continued from previous page...

Mol	Chain	Res	Type	Atoms	Z	Observed(Å)	Ideal(Å)
6	B	925	FDE	C1D-C2D	-3.10	1.39	1.45
6	A	425	FDE	C4C-C3C	-3.07	1.37	1.42
6	A	425	FDE	C4D-ND	-3.02	1.33	1.39
6	B	925	FDE	C4D-ND	-3.00	1.33	1.39
6	A	425	FDE	C1D-C2D	-2.91	1.39	1.45
6	A	425	FDE	C4D-C3D	-2.84	1.40	1.45
6	B	925	FDE	C4B-CHC	2.76	1.48	1.41
6	B	925	FDE	C4D-C3D	-2.73	1.40	1.45
6	A	425	FDE	C4A-C3A	2.73	1.49	1.44
6	A	425	FDE	CHD-C1D	-2.71	1.33	1.38
6	A	425	FDE	C4A-NA	-2.62	1.35	1.40
6	B	925	FDE	C4C-C3C	-2.61	1.38	1.42
6	A	425	FDE	C4B-CHC	2.57	1.48	1.41
6	B	925	FDE	C1A-C2A	2.49	1.49	1.45
6	B	925	FDE	C4C-NC	-2.35	1.34	1.38
6	A	425	FDE	C1D-ND	-2.23	1.35	1.39
6	B	925	FDE	FE-NC	2.17	2.09	1.97

All (95) bond angle outliers are listed below:

Mol	Chain	Res	Type	Atoms	Z	Observed(°)	Ideal(°)
6	B	925	FDE	C1B-CHB-C4A	16.43	155.02	129.64
6	A	425	FDE	C1B-CHB-C4A	13.86	151.04	129.64
6	B	925	FDE	C1D-CHD-C4C	12.87	153.82	126.06
6	B	925	FDE	CHD-C1D-ND	-12.15	111.29	124.44
6	B	925	FDE	CHD-C4C-NC	-11.65	111.76	124.42
6	A	425	FDE	CHD-C1D-ND	-11.22	112.31	124.44
6	A	425	FDE	C1D-CHD-C4C	10.90	149.58	126.06
6	B	925	FDE	CHB-C4A-NA	-9.77	112.31	124.38
6	A	425	FDE	CHB-C4A-NA	-9.66	112.44	124.38
6	A	425	FDE	CHD-C4C-NC	-9.61	113.98	124.42
6	B	925	FDE	C1B-C2B-C3B	-7.64	100.30	106.36
6	B	925	FDE	CMF-C3C-C4C	7.41	136.89	125.51
6	A	425	FDE	C2C-C1C-NC	6.83	114.88	109.56
6	B	925	FDE	C2C-C1C-NC	6.27	114.45	109.56
6	A	425	FDE	C1B-C2B-C3B	-6.16	101.47	106.36
6	B	925	FDE	C2B-C1B-NB	6.12	118.00	110.21
6	A	425	FDE	CMF-C3C-C4C	6.09	134.87	125.51
6	B	925	FDE	CHD-C4C-C3C	5.75	133.94	124.98
6	A	425	FDE	C1C-C2C-C3C	-5.61	102.68	108.89
6	B	925	FDE	C1C-C2C-C3C	-5.47	102.83	108.89
6	B	925	FDE	C4A-C3A-C2A	-4.96	101.74	106.96

Continued on next page...

Continued from previous page...

Mol	Chain	Res	Type	Atoms	Z	Observed(°)	Ideal(°)
6	A	425	FDE	C2B-C1B-NB	4.95	116.52	110.21
6	A	425	FDE	CHD-C4C-C3C	4.84	132.51	124.98
6	A	425	FDE	C4A-C3A-C2A	-4.76	101.95	106.96
6	B	925	FDE	C1D-C2D-C3D	-4.35	100.59	106.94
6	B	925	FDE	C2D-C1D-ND	4.30	117.62	109.69
6	B	925	FDE	CBD-CAD-C3D	-4.23	100.87	112.63
6	A	425	FDE	CMA-C3A-C4A	4.09	131.27	125.04
6	B	925	FDE	CMA-C3A-C4A	4.06	131.22	125.04
6	B	925	FDE	CHA-C4D-ND	-3.95	120.17	124.44
6	A	425	FDE	C1D-C2D-C3D	-3.93	101.20	106.94
6	B	925	FDE	C3D-C4D-ND	3.92	114.14	110.32
6	A	425	FDE	C3D-C4D-ND	3.89	114.11	110.32
6	A	425	FDE	CBD-CAD-C3D	-3.71	102.31	112.63
6	B	925	FDE	C3C-C4C-NC	3.71	114.21	109.86
6	B	925	FDE	C3A-C4A-NA	3.61	114.12	109.84
6	A	425	FDE	C2D-C1D-ND	3.61	116.36	109.69
6	A	425	FDE	C2A-C1A-NA	3.59	113.83	110.36
6	B	925	FDE	CMF-C3C-C2C	-3.56	117.32	125.63
6	A	425	FDE	CHA-C4D-ND	-3.45	120.71	124.44
6	A	425	FDE	C3A-C4A-NA	3.29	113.74	109.84
3	A	3	CHD	C6-C7-C8	3.24	114.94	111.48
6	A	425	FDE	CAA-CBA-CGA	-3.17	106.77	113.60
3	B	4	CHD	C15-C14-C13	3.16	106.65	103.55
6	B	925	FDE	C4C-NC-C1C	-3.15	102.73	106.71
3	A	3	CHD	C15-C14-C13	3.14	106.64	103.55
6	A	425	FDE	C3C-C4C-NC	3.11	113.51	109.86
3	B	1	CHD	C6-C5-C4	-3.02	107.71	111.19
3	B	4	CHD	C1-C10-C5	2.99	112.19	107.77
6	A	425	FDE	C4C-NC-C1C	-2.97	102.97	106.71
6	B	925	FDE	CAA-CBA-CGA	-2.89	107.38	113.60
3	A	2	CHD	C14-C8-C7	2.89	115.64	111.81
3	B	1	CHD	C9-C10-C5	2.88	112.63	108.58
3	A	3	CHD	C22-C20-C17	-2.87	104.35	110.28
6	A	425	FDE	CMD-C2D-C1D	2.84	129.72	124.71
3	A	2	CHD	C15-C14-C13	2.82	106.32	103.55
6	A	425	FDE	CHD-C1D-C2D	2.79	131.33	125.48
6	A	425	FDE	CMF-C3C-C2C	-2.77	119.16	125.63
3	B	4	CHD	C11-C9-C8	2.75	114.91	110.88
6	B	925	FDE	O2A-CGA-CBA	-2.74	114.29	123.08
6	B	925	FDE	C2A-C1A-NA	2.71	112.98	110.36
6	B	925	FDE	CHD-C1D-C2D	2.67	131.08	125.48
3	A	2	CHD	C1-C10-C5	2.65	111.69	107.77

Continued on next page...

Continued from previous page...

Mol	Chain	Res	Type	Atoms	Z	Observed(°)	Ideal(°)
6	A	425	FDE	O2A-CGA-CBA	-2.63	114.62	123.08
3	B	1	CHD	C23-C22-C20	-2.63	109.71	114.52
3	B	4	CHD	O12-C12-C13	-2.60	106.63	111.03
6	A	425	FDE	CHB-C4A-C3A	2.56	133.82	126.72
3	B	1	CHD	C21-C20-C22	-2.55	106.36	110.36
3	B	1	CHD	C15-C14-C13	2.55	106.05	103.55
3	A	3	CHD	C21-C20-C17	2.53	116.79	112.92
6	B	925	FDE	CHB-C4A-C3A	2.47	133.57	126.72
3	A	2	CHD	C11-C9-C8	2.41	114.40	110.88
6	B	925	FDE	CMD-C2D-C1D	2.39	128.93	124.71
3	A	3	CHD	C19-C10-C5	-2.38	106.32	110.36
3	A	2	CHD	C6-C7-C8	2.32	113.96	111.48
3	B	4	CHD	C13-C17-C20	2.30	122.24	119.50
4	A	1	GOL	C3-C2-C1	2.29	120.59	111.70
3	B	1	CHD	C4-C5-C10	2.27	115.07	112.66
3	B	1	CHD	C1-C10-C5	2.27	111.12	107.77
6	B	925	FDE	CME-C3B-C2B	-2.26	120.79	124.93
6	B	925	FDE	O1A-CGA-CBA	2.23	121.21	114.03
3	B	4	CHD	C11-C12-C13	2.23	113.54	111.24
3	B	4	CHD	C19-C10-C1	-2.21	104.71	108.26
3	A	3	CHD	C11-C9-C8	2.16	114.05	110.88
3	B	1	CHD	C21-C20-C17	2.16	116.23	112.92
6	B	925	FDE	C4D-ND-C1D	-2.15	103.25	105.35
3	B	4	CHD	C6-C7-C8	2.14	113.77	111.48
3	B	1	CHD	C14-C8-C7	2.12	114.61	111.81
6	B	925	FDE	C4D-C3D-C2D	-2.11	104.37	107.13
3	B	1	CHD	C6-C7-C8	2.10	113.72	111.48
4	A	1	GOL	O2-C2-C3	2.05	118.13	109.12
6	A	425	FDE	CME-C3B-C2B	-2.04	121.19	124.93
6	B	925	FDE	C4A-NA-C1A	2.02	107.16	105.07
6	B	925	FDE	C1A-C2A-C3A	-2.01	103.97	106.90
6	A	425	FDE	O1A-CGA-CBA	2.01	120.48	114.03

All (2) chirality outliers are listed below:

Mol	Chain	Res	Type	Atom
6	A	425	FDE	ND
6	B	925	FDE	ND

All (19) torsion outliers are listed below:

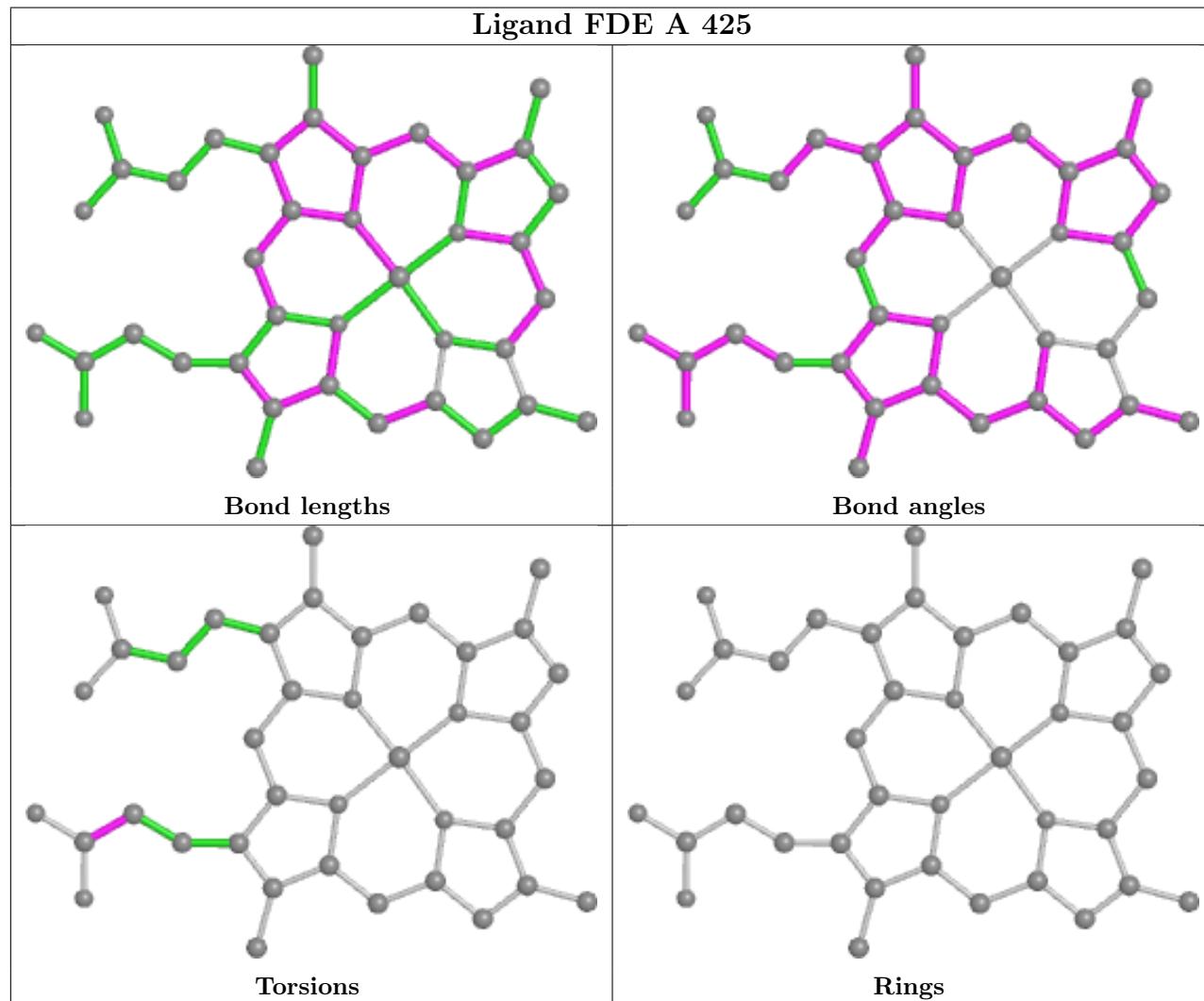
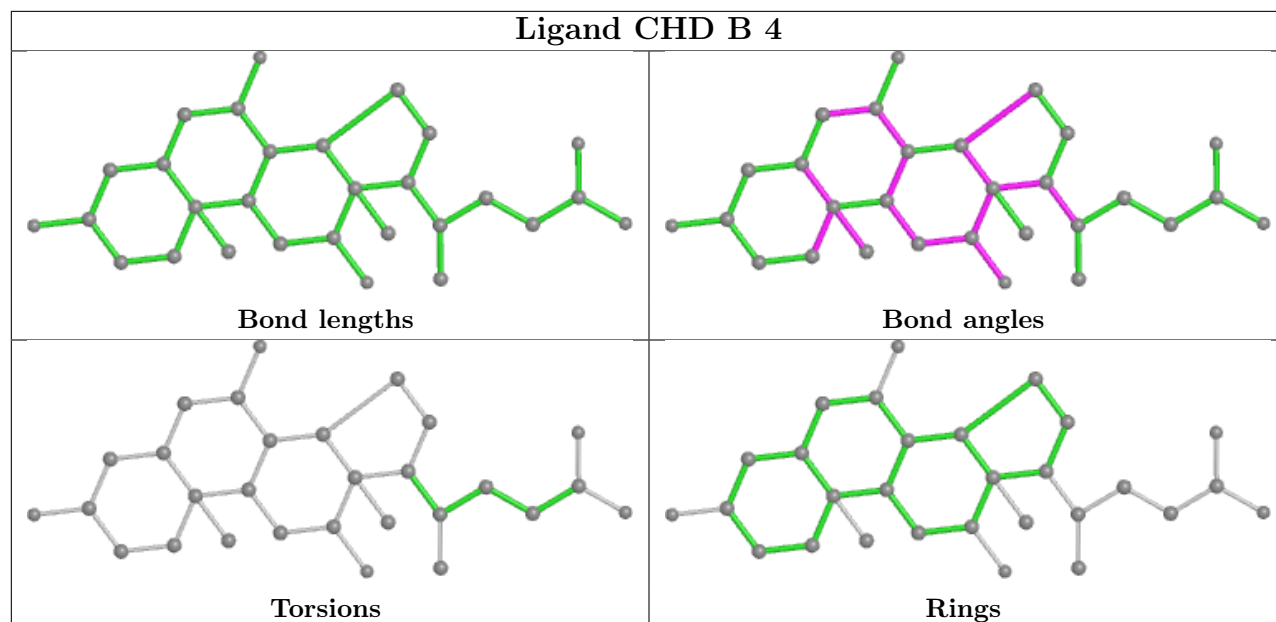
Mol	Chain	Res	Type	Atoms
3	A	2	CHD	C17-C20-C22-C23
3	A	2	CHD	C21-C20-C22-C23
3	B	1	CHD	C17-C20-C22-C23
3	B	1	CHD	C21-C20-C22-C23
4	A	1	GOL	O2-C2-C3-O3
4	A	1	GOL	O1-C1-C2-O2
3	A	2	CHD	C16-C17-C20-C22
3	A	2	CHD	C13-C17-C20-C21
3	A	2	CHD	C20-C22-C23-C24
6	B	925	FDE	CAA-CBA-CGA-O2A
6	A	425	FDE	CAA-CBA-CGA-O2A
3	B	1	CHD	C22-C23-C24-O25
3	B	1	CHD	C22-C23-C24-O26
3	A	2	CHD	C22-C23-C24-O25
3	A	2	CHD	C22-C23-C24-O26
6	A	425	FDE	CAA-CBA-CGA-O1A
6	B	925	FDE	CAA-CBA-CGA-O1A
3	A	3	CHD	C22-C23-C24-O26
3	A	3	CHD	C22-C23-C24-O25

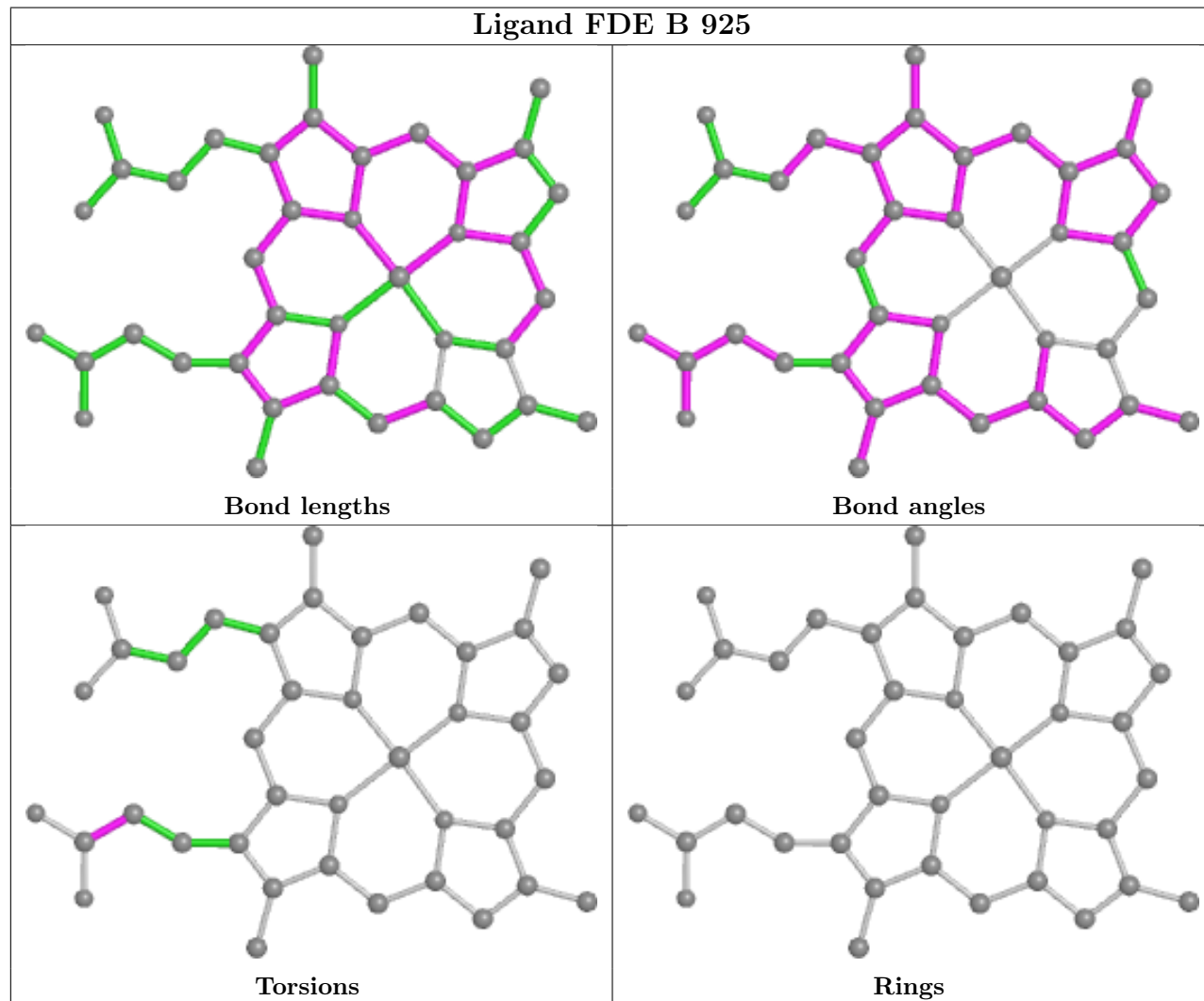
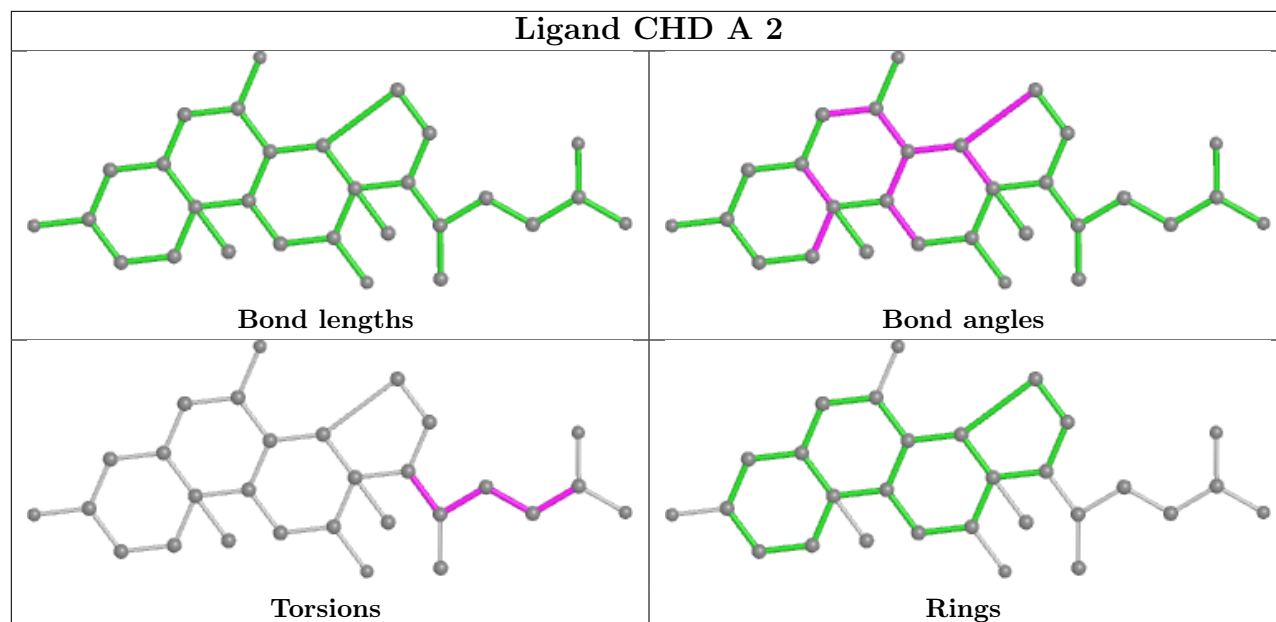
There are no ring outliers.

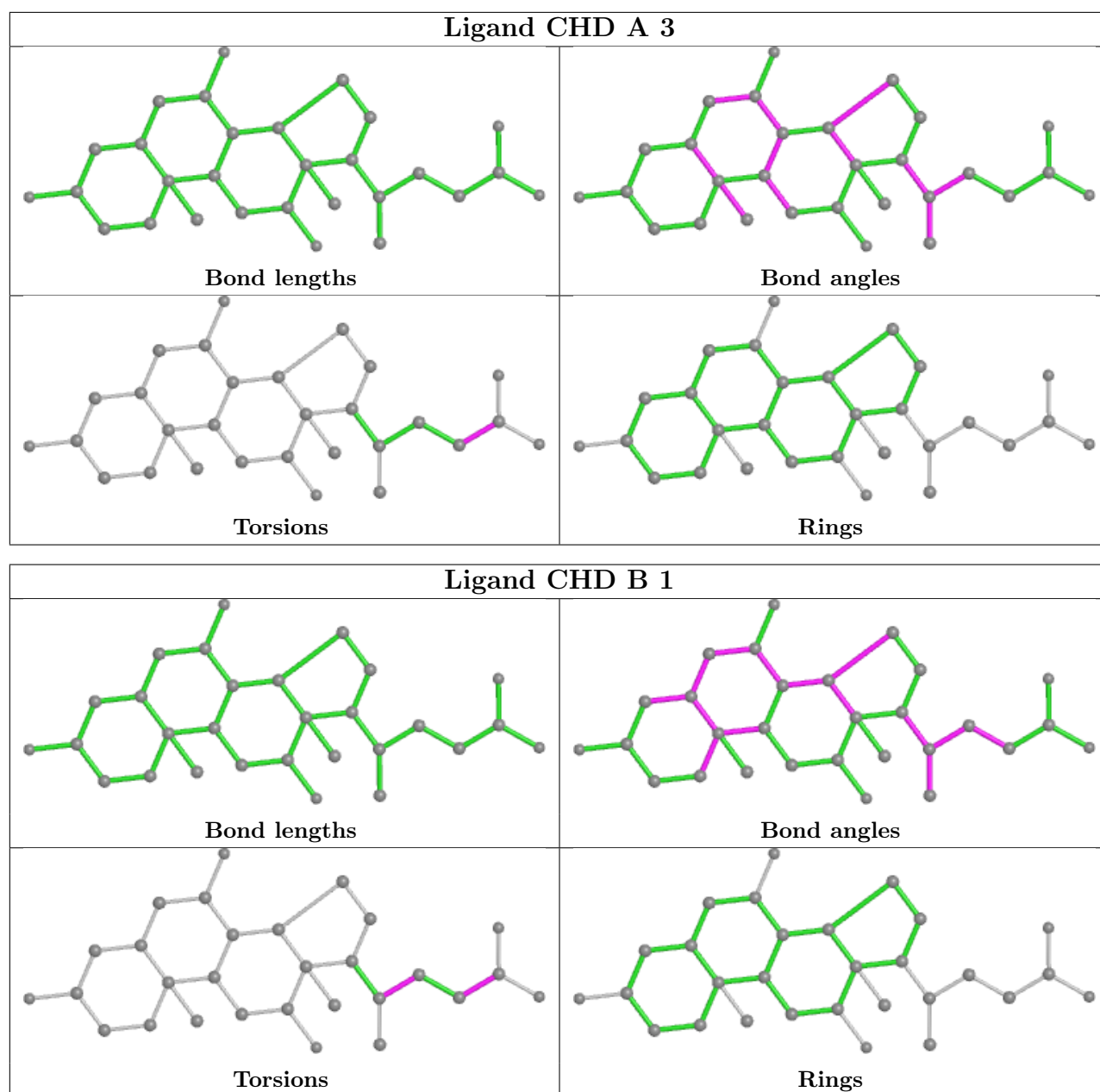
4 monomers are involved in 7 short contacts:

Mol	Chain	Res	Type	Clashes	Symm-Clashes
6	A	425	FDE	2	0
3	A	2	CHD	2	0
6	B	925	FDE	2	0
3	B	1	CHD	3	0

The following is a two-dimensional graphical depiction of Mogul quality analysis of bond lengths, bond angles, torsion angles, and ring geometry for all instances of the Ligand of Interest. In addition, ligands with molecular weight > 250 and outliers as shown on the validation Tables will also be included. For torsion angles, if less than 5% of the Mogul distribution of torsion angles is within 10 degrees of the torsion angle in question, then that torsion angle is considered an outlier. Any bond that is central to one or more torsion angles identified as an outlier by Mogul will be highlighted in the graph. For rings, the root-mean-square deviation (RMSD) between the ring in question and similar rings identified by Mogul is calculated over all ring torsion angles. If the average RMSD is greater than 60 degrees and the minimal RMSD between the ring in question and any Mogul-identified rings is also greater than 60 degrees, then that ring is considered an outlier. The outliers are highlighted in purple. The color gray indicates Mogul did not find sufficient equivalents in the CSD to analyse the geometry.







5.7 Other polymers [i](#)

There are no such residues in this entry.

5.8 Polymer linkage issues [i](#)

There are no chain breaks in this entry.

6 Fit of model and data [i](#)

6.1 Protein, DNA and RNA chains [i](#)

In the following table, the column labelled ‘#RSRZ > 2’ contains the number (and percentage) of RSRZ outliers, followed by percent RSRZ outliers for the chain as percentile scores relative to all X-ray entries and entries of similar resolution. The OWAB column contains the minimum, median, 95th percentile and maximum values of the occupancy-weighted average B-factor per residue. The column labelled ‘Q < 0.9’ lists the number of (and percentage) of residues with an average occupancy less than 0.9.

Mol	Chain	Analysed	<RSRZ>	#RSRZ>2	OWAB(Å ²)	Q<0.9
1	A	359/359 (100%)	-0.33	4 (1%) 80 79	4, 14, 29, 43	0
1	B	359/359 (100%)	-0.26	6 (1%) 70 68	3, 15, 34, 46	0
All	All	718/718 (100%)	-0.30	10 (1%) 75 74	3, 15, 32, 46	0

All (10) RSRZ outliers are listed below:

Mol	Chain	Res	Type	RSRZ
1	B	600	THR	3.3
1	B	607	LEU	2.9
1	B	923	LEU	2.8
1	A	423	LEU	2.8
1	B	603	ILE	2.7
1	B	565	ARG	2.5
1	A	66	LYS	2.5
1	A	114	ARG	2.2
1	B	614	ARG	2.1
1	A	358	LYS	2.0

6.2 Non-standard residues in protein, DNA, RNA chains [i](#)

There are no non-standard protein/DNA/RNA residues in this entry.

6.3 Carbohydrates [i](#)

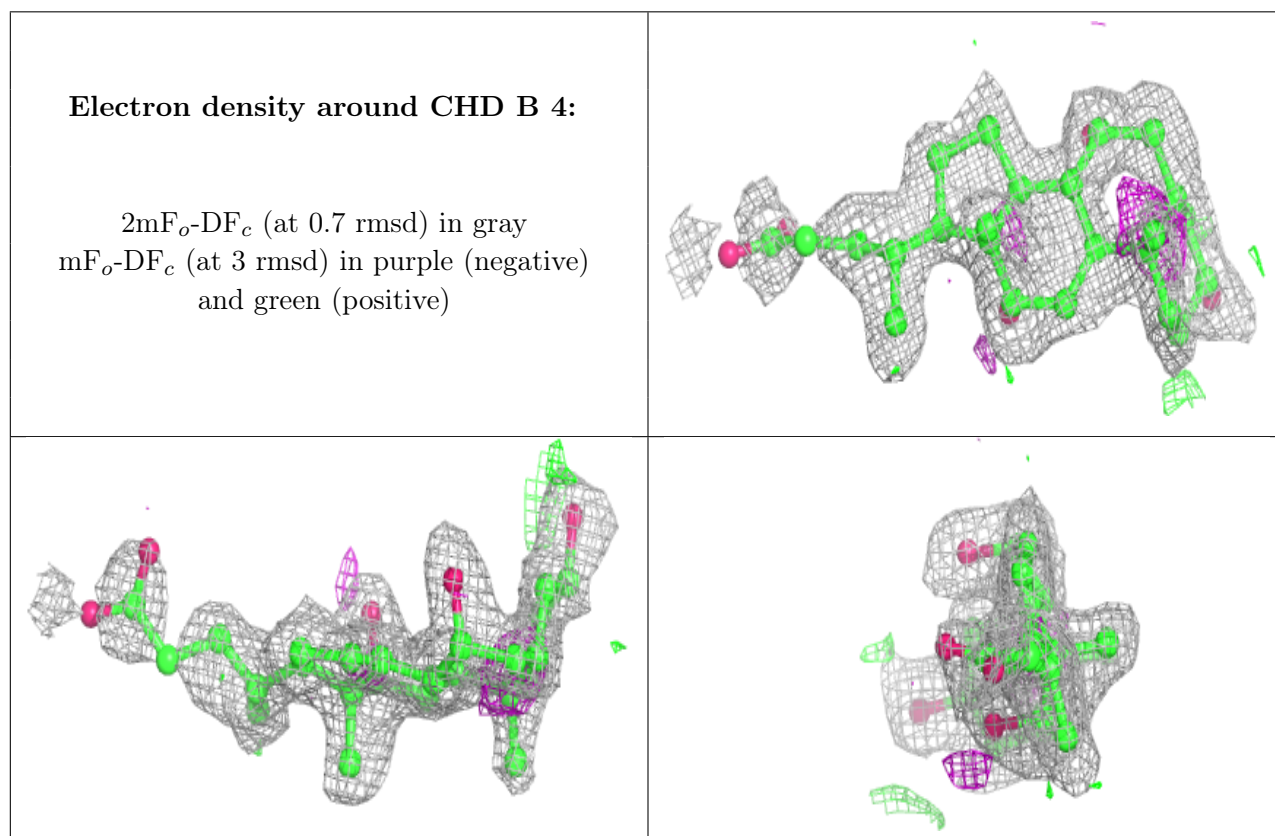
There are no monosaccharides in this entry.

6.4 Ligands [i](#)

In the following table, the Atoms column lists the number of modelled atoms in the group and the number defined in the chemical component dictionary. The B-factors column lists the minimum, median, 95th percentile and maximum values of B factors of atoms in the group. The column labelled 'Q< 0.9' lists the number of atoms with occupancy less than 0.9.

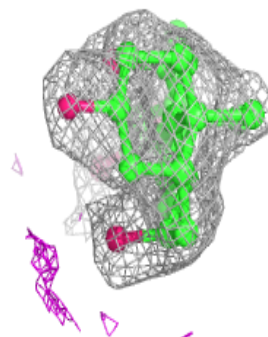
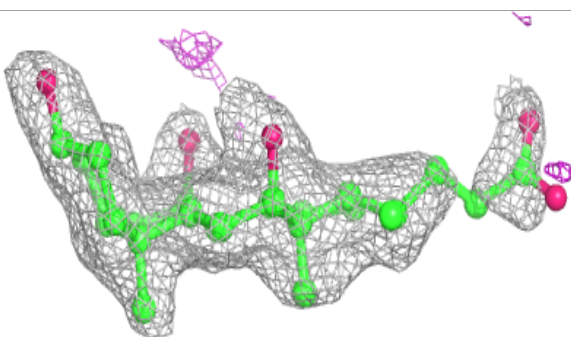
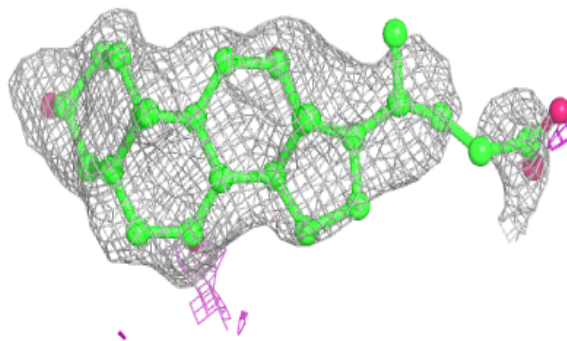
Mol	Type	Chain	Res	Atoms	RSCC	RSR	B-factors(Å ²)	Q<0.9
3	CHD	B	4	29/29	0.78	0.24	27,30,47,50	0
3	CHD	B	1	29/29	0.82	0.23	37,40,57,59	0
3	CHD	A	2	29/29	0.82	0.23	37,40,60,61	0
3	CHD	A	3	29/29	0.88	0.15	17,21,35,38	0
4	GOL	A	1	6/6	0.89	0.27	21,25,26,27	0
5	IMD	B	924	5/5	0.89	0.15	28,28,29,29	0
5	IMD	A	424	5/5	0.93	0.11	15,15,17,17	0
6	FDE	B	925	39/39	0.94	0.15	18,23,28,30	0
6	FDE	A	425	39/39	0.98	0.09	10,14,21,26	0
2	FES	B	501	4/4	0.99	0.07	10,11,14,15	0
2	FES	A	501	4/4	0.99	0.07	8,10,12,13	0

The following is a graphical depiction of the model fit to experimental electron density of all instances of the Ligand of Interest. In addition, ligands with molecular weight > 250 and outliers as shown on the geometry validation Tables will also be included. Each fit is shown from different orientation to approximate a three-dimensional view.

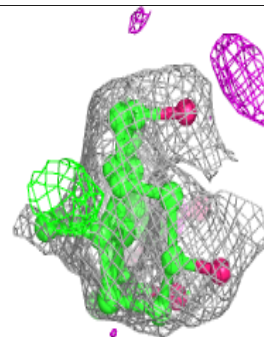
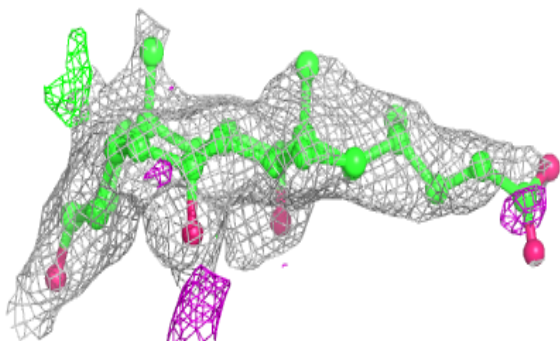
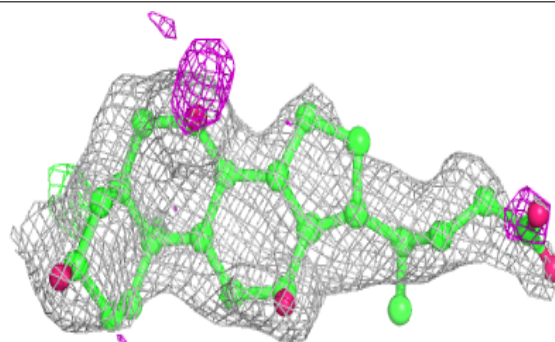


Electron density around CHD B 1:

$2mF_o-DF_c$ (at 0.7 rmsd) in gray
 mF_o-DF_c (at 3 rmsd) in purple (negative)
and green (positive)

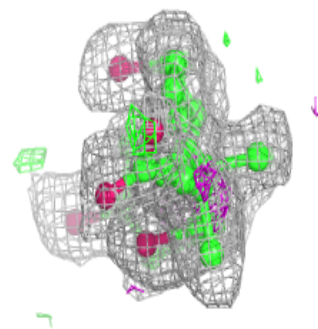
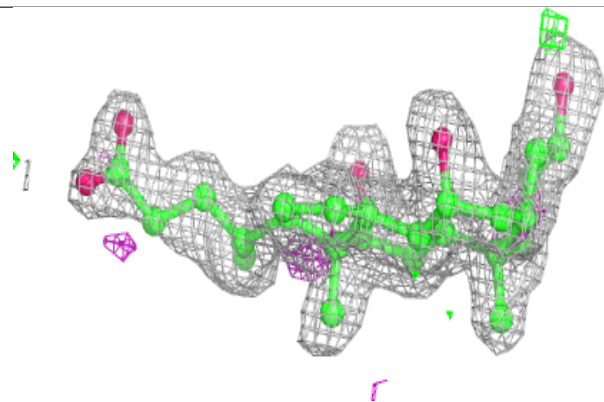
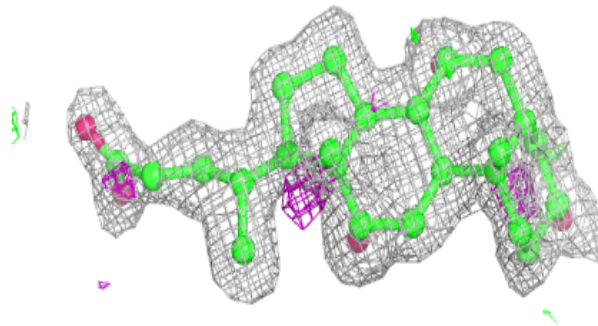
**Electron density around CHD A 2:**

$2mF_o-DF_c$ (at 0.7 rmsd) in gray
 mF_o-DF_c (at 3 rmsd) in purple (negative)
and green (positive)



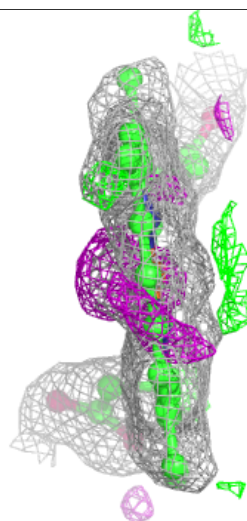
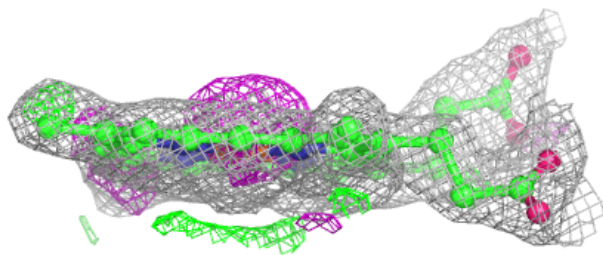
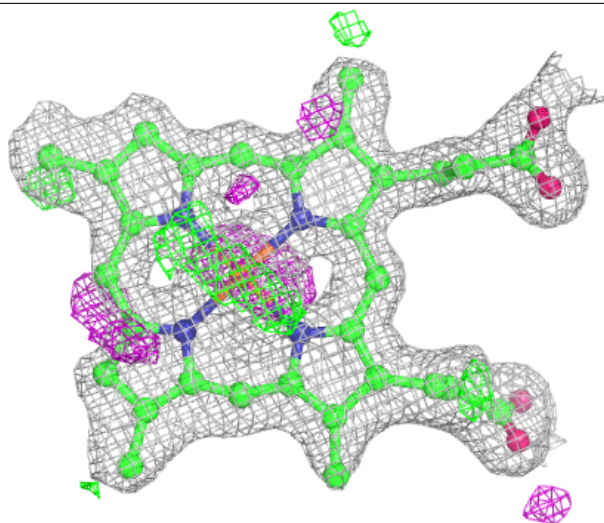
Electron density around CHD A 3:

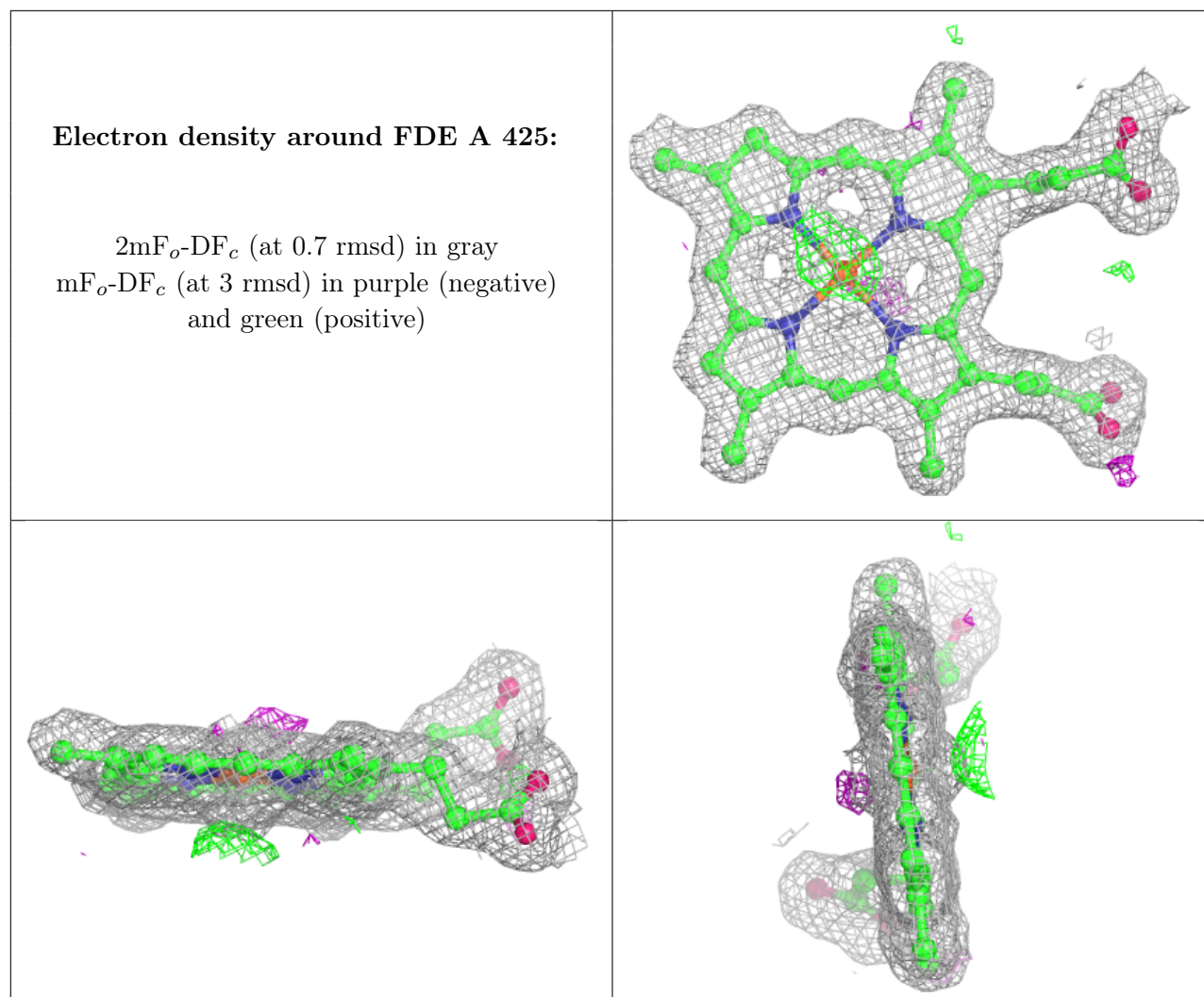
$2mF_o-DF_c$ (at 0.7 rmsd) in gray
 mF_o-DF_c (at 3 rmsd) in purple (negative)
and green (positive)



Electron density around FDE B 925:

$2mF_o-DF_c$ (at 0.7 rmsd) in gray
 mF_o-DF_c (at 3 rmsd) in purple (negative)
and green (positive)





6.5 Other polymers [i](#)

There are no such residues in this entry.