



Full wwPDB X-ray Structure Validation Report ⓘ

Oct 19, 2024 – 07:53 PM EDT

PDB ID : 3D91
Title : Human renin in complex with remikiren
Authors : Prade, L.; Bezencon, O.; Bur, D.; Weller, T.; Fischli, W.; Remen, L.
Deposited on : 2008-05-26
Resolution : 2.20 Å(reported)

This is a Full wwPDB X-ray Structure Validation Report for a publicly released PDB entry.

We welcome your comments at validation@mail.wwpdb.org

A user guide is available at

<https://www.wwpdb.org/validation/2017/XrayValidationReportHelp>

with specific help available everywhere you see the ⓘ symbol.

The types of validation reports are described at

<http://www.wwpdb.org/validation/2017/FAQs#types>.

The following versions of software and data (see [references ⓘ](#)) were used in the production of this report:

MolProbity : 4.02b-467
Mogul : 2022.3.0, CSD as543be (2022)
Xtriage (Phenix) : 1.20.1
EDS : 3.0
buster-report : 1.1.7 (2018)
Percentile statistics : 20231227.v01 (using entries in the PDB archive December 27th 2023)
CCP4 : 9.0.003 (Gargrove)
Density-Fitness : 1.0.11
Ideal geometry (proteins) : Engh & Huber (2001)
Ideal geometry (DNA, RNA) : Parkinson et al. (1996)
Validation Pipeline (wwPDB-VP) : 2.39

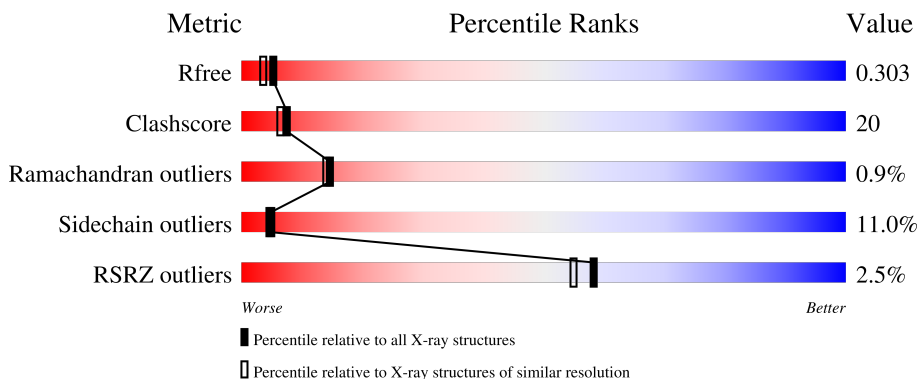
1 Overall quality at a glance

The following experimental techniques were used to determine the structure:

X-RAY DIFFRACTION

The reported resolution of this entry is 2.20 Å.

Percentile scores (ranging between 0-100) for global validation metrics of the entry are shown in the following graphic. The table shows the number of entries on which the scores are based.



Metric	Whole archive (#Entries)	Similar resolution (#Entries, resolution range(Å))
R_{free}	164625	5791 (2.20-2.20)
Clashscore	180529	6634 (2.20-2.20)
Ramachandran outliers	177936	6560 (2.20-2.20)
Sidechain outliers	177891	6561 (2.20-2.20)
RSRZ outliers	164620	5791 (2.20-2.20)

The table below summarises the geometric issues observed across the polymeric chains and their fit to the electron density. The red, orange, yellow and green segments of the lower bar indicate the fraction of residues that contain outliers for ≥ 3 , 2, 1 and 0 types of geometric quality criteria respectively. A grey segment represents the fraction of residues that are not modelled. The numeric value for each fraction is indicated below the corresponding segment, with a dot representing fractions $\leq 5\%$. The upper red bar (where present) indicates the fraction of residues that have poor fit to the electron density. The numeric value is given above the bar.

Mol	Chain	Length	Quality of chain
1	A	341	
1	B	341	

2 Entry composition [i](#)

There are 4 unique types of molecules in this entry. The entry contains 5529 atoms, of which 0 are hydrogens and 0 are deuteriums.

In the tables below, the ZeroOcc column contains the number of atoms modelled with zero occupancy, the AltConf column contains the number of residues with at least one atom in alternate conformation and the Trace column contains the number of residues modelled with at most 2 atoms.

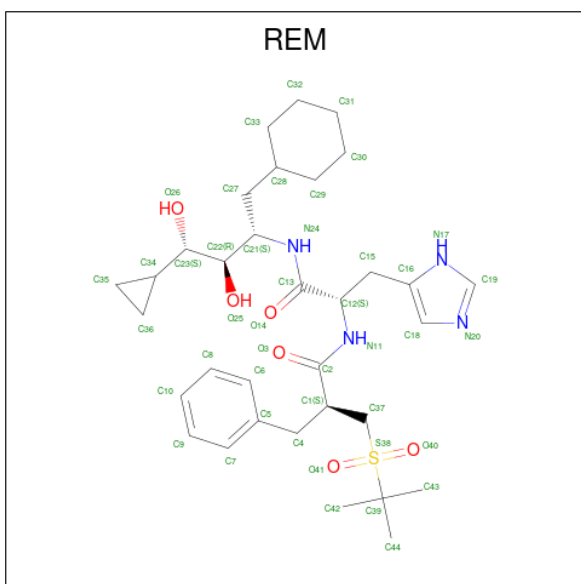
- Molecule 1 is a protein called Renin.

Mol	Chain	Residues	Atoms					ZeroOcc	AltConf	Trace
			Total	C	N	O	S			
1	A	334	Total 2576	C 1645	N 418	O 499	S 14	0	0	0
1	B	337	Total 2599	C 1661	N 421	O 503	S 14	0	0	0

There are 2 discrepancies between the modelled and reference sequences:

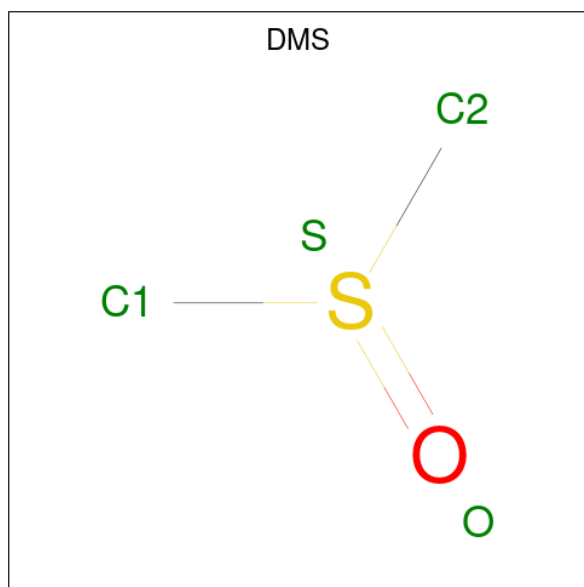
Chain	Residue	Modelled	Actual	Comment	Reference
A	341	HIS	-	expression tag	UNP P00797
B	341	HIS	-	expression tag	UNP P00797

- Molecule 2 is Nalpha-[(2S)-2-benzyl-3-(tert-butylsulfonyl)propanoyl]-N-[(1S,2R,3S)-1-(cyclohexylmethyl)-3-cyclopropyl-2,3-dihydroxypropyl]-L-histidinamide (three-letter code: REM) (formula: C₃₃H₅₀N₄O₆S).



Mol	Chain	Residues	Atoms					ZeroOcc	AltConf
2	A	1	Total	C	N	O	S	0	0
			44	33	4	6	1		
2	B	1	Total	C	N	O	S	0	0
			44	33	4	6	1		

- Molecule 3 is DIMETHYL SULFOXIDE (three-letter code: DMS) (formula: C₂H₆OS).



Mol	Chain	Residues	Atoms				ZeroOcc	AltConf
3	A	1	Total	C	O	S	0	0
			4	2	1	1		
3	B	1	Total	C	O	S	0	0
			4	2	1	1		

- Molecule 4 is water.

Mol	Chain	Residues	Atoms		ZeroOcc	AltConf
4	A	143	Total	O	0	0
			143	143		
4	B	115	Total	O	0	0
			115	115		

4 Data and refinement statistics

Property	Value	Source
Space group	P 21 21 21	Depositor
Cell constants a, b, c, α , β , γ	66.79Å 93.55Å 117.43Å 90.00° 90.00° 90.00°	Depositor
Resolution (Å)	20.00 – 2.20 20.00 – 2.20	Depositor EDS
% Data completeness (in resolution range)	84.1 (20.00-2.20) 84.0 (20.00-2.20)	Depositor EDS
R_{merge}	(Not available)	Depositor
R_{sym}	(Not available)	Depositor
$\langle I/\sigma(I) \rangle$ ¹	1.25 (at 2.20Å)	Xtrriage
Refinement program	REFMAC 5.2.0019	Depositor
R, R_{free}	0.215 , 0.301 0.216 , 0.303	Depositor DCC
R_{free} test set	1605 reflections (5.01%)	wwPDB-VP
Wilson B-factor (Å ²)	41.6	Xtrriage
Anisotropy	0.433	Xtrriage
Bulk solvent k_{sol} (e/Å ³), B_{sol} (Å ²)	0.37 , 87.0	EDS
L-test for twinning ²	$\langle L \rangle = 0.46$, $\langle L^2 \rangle = 0.29$	Xtrriage
Estimated twinning fraction	No twinning to report.	Xtrriage
F_o, F_c correlation	0.94	EDS
Total number of atoms	5529	wwPDB-VP
Average B, all atoms (Å ²)	62.0	wwPDB-VP

Xtrriage's analysis on translational NCS is as follows: *The largest off-origin peak in the Patterson function is 4.75% of the height of the origin peak. No significant pseudotranslation is detected.*

¹Intensities estimated from amplitudes.

²Theoretical values of $\langle |L| \rangle$, $\langle L^2 \rangle$ for acentric reflections are 0.5, 0.333 respectively for untwinned datasets, and 0.375, 0.2 for perfectly twinned datasets.

5 Model quality [i](#)

5.1 Standard geometry [i](#)

Bond lengths and bond angles in the following residue types are not validated in this section: DMS, REM

The Z score for a bond length (or angle) is the number of standard deviations the observed value is removed from the expected value. A bond length (or angle) with $|Z| > 5$ is considered an outlier worth inspection. RMSZ is the root-mean-square of all Z scores of the bond lengths (or angles).

Mol	Chain	Bond lengths		Bond angles	
		RMSZ	# $ Z > 5$	RMSZ	# $ Z > 5$
1	A	0.91	5/2636 (0.2%)	0.93	5/3573 (0.1%)
1	B	0.71	1/2659 (0.0%)	0.78	1/3605 (0.0%)
All	All	0.81	6/5295 (0.1%)	0.86	6/7178 (0.1%)

Chiral center outliers are detected by calculating the chiral volume of a chiral center and verifying if the center is modelled as a planar moiety or with the opposite hand. A planarity outlier is detected by checking planarity of atoms in a peptide group, atoms in a mainchain group or atoms of a sidechain that are expected to be planar.

Mol	Chain	#Chirality outliers	#Planarity outliers
1	B	0	1

All (6) bond length outliers are listed below:

Mol	Chain	Res	Type	Atoms	Z	Observed(Å)	Ideal(Å)
1	A	88	VAL	CB-CG1	-9.89	1.32	1.52
1	A	88	VAL	CA-CB	6.86	1.69	1.54
1	A	128	VAL	CB-CG2	-5.38	1.41	1.52
1	A	45	TRP	C-O	-5.21	1.13	1.23
1	A	72	TYR	CD2-CE2	5.13	1.47	1.39
1	B	296	CYS	CB-SG	5.12	1.91	1.82

All (6) bond angle outliers are listed below:

Mol	Chain	Res	Type	Atoms	Z	Observed(°)	Ideal(°)
1	A	88	VAL	CG1-CB-CG2	6.14	120.73	110.90
1	A	17	ASP	CB-CG-OD2	-5.61	113.25	118.30
1	A	226	ASP	CB-CG-OD1	5.37	123.13	118.30
1	B	117	LEU	CA-CB-CG	5.35	127.61	115.30
1	A	17	ASP	CB-CG-OD1	5.17	122.95	118.30

Continued on next page...

Continued from previous page...

Mol	Chain	Res	Type	Atoms	Z	Observed(°)	Ideal(°)
1	A	231	TYR	CB-CG-CD2	5.06	124.04	121.00

There are no chirality outliers.

All (1) planarity outliers are listed below:

Mol	Chain	Res	Type	Group
1	B	250	LYS	Peptide

5.2 Too-close contacts [i](#)

In the following table, the Non-H and H(model) columns list the number of non-hydrogen atoms and hydrogen atoms in the chain respectively. The H(added) column lists the number of hydrogen atoms added and optimized by MolProbity. The Clashes column lists the number of clashes within the asymmetric unit, whereas Symm-Clashes lists symmetry-related clashes.

Mol	Chain	Non-H	H(model)	H(added)	Clashes	Symm-Clashes
1	A	2576	0	2505	114	0
1	B	2599	0	2537	98	0
2	A	44	0	50	2	0
2	B	44	0	50	3	0
3	A	4	0	6	0	0
3	B	4	0	6	0	0
4	A	143	0	0	20	0
4	B	115	0	0	18	0
All	All	5529	0	5154	208	0

The all-atom clashscore is defined as the number of clashes found per 1000 atoms (including hydrogen atoms). The all-atom clashscore for this structure is 20.

All (208) close contacts within the same asymmetric unit are listed below, sorted by their clash magnitude.

Atom-1	Atom-2	Interatomic distance (Å)	Clash overlap (Å)
1:B:32:THR:HB	4:B:462:HOH:O	1.58	1.02
1:A:164:ARG:HH11	1:A:164:ARG:HG3	0.87	1.00
1:A:164:ARG:HH11	1:A:164:ARG:CG	1.77	0.97
1:A:139:ARG:HG2	1:A:139:ARG:HH11	1.28	0.96
1:B:132:PHE:HB3	1:B:134:GLU:OE1	1.65	0.95
1:A:154:LYS:HG3	4:A:474:HOH:O	1.68	0.93
1:A:196:ILE:CD1	1:A:222:LEU:HD22	1.99	0.92

Continued on next page...

Continued from previous page...

Atom-1	Atom-2	Interatomic distance (Å)	Clash overlap (Å)
1:A:164:ARG:HG3	1:A:164:ARG:NH1	1.68	0.92
1:A:251:ARG:HB2	1:A:254:ASP:OD1	1.70	0.91
1:A:25:GLY:HA3	4:A:418:HOH:O	1.71	0.89
1:B:94:GLN:HB2	1:B:107:MET:SD	2.12	0.89
1:A:117:LEU:HD11	1:B:60:TYR:CG	2.08	0.88
1:B:171:SER:HB2	4:B:409:HOH:O	1.74	0.86
1:A:117:LEU:HD11	1:B:60:TYR:CD1	2.13	0.83
1:A:221:CYS:HB2	4:A:358:HOH:O	1.79	0.82
1:A:139:ARG:HH11	1:A:139:ARG:CG	1.91	0.82
1:B:182:ASP:OD1	1:B:184:GLN:HG3	1.80	0.81
1:A:196:ILE:HD11	1:A:222:LEU:HD22	1.64	0.78
1:A:143:ILE:O	1:A:147:ILE:HG13	1.84	0.78
1:B:276:GLU:HB3	4:B:465:HOH:O	1.85	0.77
1:B:209:SER:HB2	1:B:269:SER:HB2	1.67	0.76
1:B:285:VAL:HG22	1:B:298:LEU:HD22	1.69	0.74
1:A:89:SER:OG	1:A:113:GLU:CG	2.39	0.71
1:B:269:SER:HB3	4:B:465:HOH:O	1.89	0.71
1:A:5:ASN:HA	1:A:154:LYS:HB2	1.73	0.70
1:B:34:LYS:NZ	1:B:123:GLU:O	2.26	0.69
1:A:45:TRP:CE2	1:A:127:VAL:HG13	2.28	0.68
1:A:89:SER:OG	1:A:113:GLU:HG3	1.93	0.68
1:A:87:THR:HG22	4:A:466:HOH:O	1.93	0.67
1:A:308:PRO:HD2	4:A:485:HOH:O	1.94	0.67
1:B:11:ILE:HD12	1:B:172:LEU:HD11	1.77	0.67
1:B:157:VAL:HG12	1:B:328:ASP:HA	1.78	0.66
1:A:305:ILE:O	1:A:310:GLY:HA3	1.96	0.65
1:B:5:ASN:ND2	4:B:460:HOH:O	2.19	0.65
1:B:19:GLN:HE21	2:B:350:REM:H8	1.61	0.64
1:B:290:TYR:N	1:B:290:TYR:CD2	2.65	0.64
1:A:241:LYS:CB	1:A:241:LYS:NZ	2.61	0.63
1:A:139:ARG:HG2	1:A:139:ARG:NH1	2.06	0.63
1:A:250:LYS:HG2	1:A:251:ARG:O	1.98	0.62
1:B:96:ILE:HG22	1:B:103:THR:HG23	1.81	0.62
1:A:251:ARG:NH1	1:A:254:ASP:OD2	2.33	0.62
1:A:197:LYS:CD	4:A:490:HOH:O	2.49	0.61
1:B:288:GLU:O	1:B:289:SER:HB3	2.00	0.61
1:B:132:PHE:CB	1:B:134:GLU:OE1	2.44	0.61
1:A:200:VAL:HG13	1:A:202:GLN:HB3	1.80	0.61
1:B:290:TYR:N	1:B:290:TYR:HD2	1.99	0.61
1:A:182:ASP:OD2	1:A:184:GLN:HG2	2.01	0.61
4:A:470:HOH:O	1:B:34:LYS:HE2	2.01	0.61

Continued on next page...

Continued from previous page...

Atom-1	Atom-2	Interatomic distance (Å)	Clash overlap (Å)
1:A:69:SER:OG	1:A:95:ASP:OD2	2.19	0.60
1:B:19:GLN:NE2	2:B:350:REM:H8	2.16	0.60
1:B:79:LEU:HD22	1:B:92:LEU:HG	1.83	0.60
1:A:45:TRP:CZ2	1:A:127:VAL:HG13	2.36	0.60
1:A:196:ILE:HD13	1:A:222:LEU:HD22	1.82	0.60
1:A:35:VAL:HG12	1:A:126:GLY:HA3	1.84	0.59
1:A:56:THR:O	1:A:59:VAL:HG12	2.02	0.59
1:A:197:LYS:HD2	4:A:490:HOH:O	2.03	0.59
1:B:243:MET:SD	1:B:298:LEU:HD12	2.42	0.59
1:A:301:HIS:HB2	4:A:360:HOH:O	2.03	0.58
1:B:48:SER:O	1:B:63:LEU:HD22	2.03	0.58
1:B:11:ILE:HD11	4:B:422:HOH:O	2.03	0.58
1:A:5:ASN:CA	1:A:154:LYS:HB2	2.34	0.57
1:A:241:LYS:HG3	4:A:452:HOH:O	2.04	0.57
1:B:94:GLN:HB2	1:B:107:MET:CE	2.35	0.57
1:A:11:ILE:HD12	1:A:172:LEU:HD11	1.86	0.56
1:A:241:LYS:NZ	1:A:241:LYS:HB3	2.19	0.56
1:B:330:ARG:NE	4:B:463:HOH:O	2.37	0.56
1:A:45:TRP:NE1	1:A:127:VAL:HG13	2.20	0.56
1:B:182:ASP:OD1	1:B:184:GLN:CG	2.52	0.56
1:B:192:TYR:HB3	1:B:333:ARG:HD2	1.87	0.56
1:A:253:PHE:N	4:A:491:HOH:O	2.38	0.56
1:B:107:MET:HB2	4:B:464:HOH:O	2.04	0.56
1:B:260:ASN:ND2	1:B:292:SER:HA	2.21	0.55
1:B:115:PRO:HD3	4:B:423:HOH:O	2.07	0.55
1:B:118:PRO:HD2	1:B:119:PHE:CD2	2.42	0.55
1:B:80:THR:HB	4:B:447:HOH:O	2.06	0.55
1:A:35:VAL:HG12	1:A:126:GLY:CA	2.37	0.55
1:B:31:GLN:O	1:B:33:PHE:CE2	2.60	0.55
1:B:171:SER:N	4:B:449:HOH:O	2.40	0.55
1:A:288:GLU:HG2	4:A:435:HOH:O	2.08	0.54
1:B:200:VAL:HG22	1:B:202:GLN:HB2	1.88	0.54
1:B:27:GLY:HA2	1:B:95:ASP:OD1	2.08	0.53
1:A:10:VAL:HB	1:A:176:ILE:HG23	1.90	0.53
1:A:241:LYS:HB3	1:A:241:LYS:HZ3	1.72	0.53
1:A:97:ILE:HG22	1:A:98:THR:N	2.23	0.53
1:A:164:ARG:NH1	1:A:341:HIS:CE1	2.77	0.52
1:A:35:VAL:HG12	1:A:126:GLY:C	2.29	0.52
1:B:23:GLU:HB2	4:B:462:HOH:O	2.08	0.52
1:B:118:PRO:HD2	1:B:119:PHE:CE2	2.45	0.52
1:B:79:LEU:HD12	1:B:137:ILE:HG22	1.91	0.52

Continued on next page...

Continued from previous page...

Atom-1	Atom-2	Interatomic distance (Å)	Clash overlap (Å)
1:A:89:SER:OG	1:A:113:GLU:HG2	2.09	0.52
1:B:259:CYS:HB3	1:B:289:SER:O	2.10	0.52
1:A:163:ASN:OD1	1:A:341:HIS:HD2	1.93	0.51
1:A:144:PHE:CZ	1:A:158:PHE:HD2	2.28	0.51
1:B:47:PRO:HB2	1:B:63:LEU:HD23	1.92	0.51
1:A:246:LEU:HD11	1:A:268:ILE:HD11	1.92	0.51
1:B:25:GLY:HA3	4:B:431:HOH:O	2.09	0.51
1:A:95:ASP:OD1	1:A:96:ILE:N	2.37	0.51
1:A:288:GLU:HA	4:A:435:HOH:O	2.11	0.51
1:A:121:LEU:HD21	1:B:60:TYR:HE2	1.75	0.51
1:A:197:LYS:HZ3	1:A:202:GLN:HE21	1.59	0.51
1:A:47:PRO:HG2	1:A:62:LYS:O	2.12	0.50
1:A:187:GLU:HB3	1:A:340:ARG:NH1	2.26	0.50
1:B:13:THR:O	1:B:20:TYR:HA	2.11	0.50
1:A:35:VAL:HA	1:A:126:GLY:O	2.11	0.50
1:A:182:ASP:CG	1:A:184:GLN:HG2	2.32	0.50
1:B:243:MET:O	1:B:244:GLU:C	2.49	0.50
1:B:265:LEU:HB2	1:B:281:SER:HB3	1.93	0.50
1:B:10:VAL:HB	1:B:176:ILE:HG23	1.93	0.50
1:B:96:ILE:CG2	1:B:103:THR:CG2	2.90	0.50
1:B:249:LYS:HA	4:B:427:HOH:O	2.12	0.49
1:A:79:LEU:N	1:A:79:LEU:HD23	2.26	0.49
1:A:196:ILE:CD1	1:A:222:LEU:CD2	2.83	0.49
1:A:241:LYS:HB2	1:A:241:LYS:HZ2	1.77	0.49
2:A:350:REM:C6	2:A:350:REM:H37A	2.43	0.48
1:B:182:ASP:CG	1:B:184:GLN:HG3	2.34	0.48
1:B:208:VAL:HB	1:B:216:LEU:HB2	1.94	0.48
1:A:120:MET:CE	4:A:460:HOH:O	2.62	0.48
1:A:8:SER:OG	1:A:100:GLY:HA3	2.14	0.48
1:A:89:SER:HG	1:A:113:GLU:CG	2.26	0.48
1:A:117:LEU:HD21	1:B:60:TYR:CE2	2.48	0.48
1:A:118:PRO:HD2	1:A:119:PHE:CD2	2.48	0.48
1:B:294:LYS:HE3	1:B:294:LYS:HA	1.97	0.47
1:A:164:ARG:HH12	1:A:341:HIS:CE1	2.32	0.47
1:A:196:ILE:HD13	1:A:222:LEU:CD2	2.44	0.47
1:B:275:LYS:NZ	1:B:276:GLU:O	2.47	0.47
1:A:243:MET:HG3	1:A:255:TYR:CD1	2.49	0.47
1:B:217:CYS:SG	1:B:217:CYS:O	2.73	0.46
1:B:196:ILE:HD13	1:B:222:LEU:CD2	2.44	0.46
1:A:328:ASP:OD1	1:A:328:ASP:C	2.53	0.46
1:B:96:ILE:HG22	1:B:103:THR:CG2	2.44	0.46

Continued on next page...

Continued from previous page...

Atom-1	Atom-2	Interatomic distance (Å)	Clash overlap (Å)
1:A:158:PHE:HA	1:A:177:VAL:O	2.15	0.46
1:A:197:LYS:HZ3	1:A:200:VAL:HG11	1.81	0.46
1:A:164:ARG:CG	1:A:164:ARG:NH1	2.50	0.46
2:A:350:REM:H34	4:A:450:HOH:O	2.15	0.46
1:B:210:VAL:CG2	1:B:242:LEU:HD12	2.46	0.46
1:A:139:ARG:CG	1:A:139:ARG:NH1	2.62	0.45
1:A:183:PRO:HA	1:A:186:TYR:CE1	2.51	0.45
1:A:241:LYS:CB	1:A:241:LYS:HZ2	2.28	0.45
1:B:172:LEU:HD12	1:B:172:LEU:HA	1.44	0.45
1:B:280:THR:O	1:B:283:ASP:N	2.38	0.45
1:A:44:VAL:HG12	1:A:45:TRP:N	2.30	0.45
1:A:200:VAL:CG1	1:A:202:GLN:HB3	2.47	0.45
1:A:73:LYS:HE3	4:A:363:HOH:O	2.16	0.45
1:B:94:GLN:OE1	1:B:107:MET:CE	2.64	0.45
1:B:74:HIS:CE1	1:B:75:ASN:O	2.70	0.45
1:A:241:LYS:CG	4:A:452:HOH:O	2.62	0.44
1:B:229:ALA:O	1:B:316:GLY:HA3	2.18	0.44
1:A:38:ASP:OD2	1:A:41:SER:HB3	2.16	0.44
1:B:132:PHE:HD1	4:B:461:HOH:O	1.99	0.44
1:A:15:TYR:CE2	1:A:16:MET:HG3	2.52	0.44
1:B:80:THR:OG1	1:B:89:SER:HB3	2.17	0.44
1:B:207:GLY:HA2	1:B:217:CYS:O	2.17	0.44
1:A:22:GLY:O	1:A:34:LYS:HA	2.17	0.44
1:A:197:LYS:NZ	1:A:202:GLN:HE21	2.15	0.44
1:B:73:LYS:HE3	1:B:94:GLN:NE2	2.32	0.44
1:B:298:LEU:C	1:B:300:ILE:H	2.21	0.44
1:A:73:LYS:CE	4:A:363:HOH:O	2.66	0.44
1:A:285:VAL:HG22	1:A:298:LEU:CD2	2.48	0.43
1:B:114:MET:HG2	1:B:114:MET:O	2.17	0.43
1:A:297:THR:HG22	1:A:298:LEU:N	2.34	0.43
1:A:183:PRO:C	1:A:185:HIS:H	2.21	0.43
1:B:25:GLY:O	1:B:26:ILE:HG12	2.18	0.43
1:A:97:ILE:CG2	1:A:98:THR:N	2.82	0.43
1:B:192:TYR:CD2	1:B:333:ARG:NH1	2.87	0.43
1:B:262:GLY:O	1:B:265:LEU:HG	2.19	0.43
1:A:210:VAL:HG21	1:A:242:LEU:HD12	2.00	0.42
1:B:42:SER:HB2	1:B:136:ALA:HB2	2.00	0.42
1:B:128:VAL:O	1:B:128:VAL:HG12	2.17	0.42
1:B:57:ALA:HB3	1:B:114:MET:HG2	2.01	0.42
1:A:45:TRP:N	1:A:45:TRP:CD1	2.87	0.42
1:A:271:HIS:HD2	1:A:275:LYS:O	2.03	0.42

Continued on next page...

Continued from previous page...

Atom-1	Atom-2	Interatomic distance (Å)	Clash overlap (Å)
1:B:158:PHE:HA	1:B:177:VAL:O	2.20	0.42
1:B:141:THR:HA	1:B:142:PRO:HD3	1.78	0.42
1:B:28:THR:HA	1:B:29:PRO:HA	1.79	0.42
1:B:289:SER:C	1:B:290:TYR:CD2	2.93	0.42
1:A:113:GLU:HG3	1:B:16:MET:HE3	2.02	0.41
1:B:134:GLU:OE1	1:B:199:GLY:HA2	2.19	0.41
1:A:120:MET:SD	1:B:60:TYR:HD2	2.43	0.41
1:B:127:VAL:HG21	2:B:350:REM:H30A	2.02	0.41
1:A:88:VAL:HG22	1:A:111:VAL:HG11	2.02	0.41
1:B:257:VAL:HG11	1:B:265:LEU:HD11	2.02	0.41
1:A:48:SER:HB2	1:A:110:GLU:HB3	2.01	0.41
1:A:242:LEU:HD12	1:A:242:LEU:HA	1.88	0.41
1:A:258:LYS:O	1:A:261:GLU:HG2	2.20	0.41
1:A:114:MET:HA	1:A:115:PRO:HD2	1.88	0.41
1:A:162:TYR:O	1:A:321:ARG:HA	2.20	0.41
1:B:133:ILE:HD12	1:B:142:PRO:CD	2.51	0.41
1:A:11:ILE:HG23	1:A:172:LEU:CD1	2.51	0.41
1:A:197:LYS:HZ3	1:A:200:VAL:CG1	2.34	0.41
1:A:211:GLY:O	1:A:213:SER:N	2.54	0.41
1:A:235:SER:O	1:A:239:ILE:HG12	2.21	0.41
1:B:114:MET:HA	1:B:115:PRO:HD2	1.82	0.41
1:B:281:SER:HA	1:B:284:TYR:CE2	2.56	0.41
1:B:308:PRO:HG2	4:B:396:HOH:O	2.21	0.41
1:A:66:ALA:HB3	4:A:448:HOH:O	2.19	0.41
1:A:92:LEU:HD13	1:A:107:MET:CE	2.50	0.41
1:A:117:LEU:HA	1:A:118:PRO:HA	1.82	0.41
1:B:288:GLU:O	1:B:289:SER:CB	2.68	0.41
1:A:159:SER:HB3	1:A:324:TYR:CE1	2.56	0.40
1:B:32:THR:CB	4:B:462:HOH:O	2.40	0.40
1:B:230:SER:N	4:B:467:HOH:O	2.54	0.40
1:A:201:TRP:CH2	1:A:327:PHE:HB3	2.55	0.40
1:A:79:LEU:HA	4:A:367:HOH:O	2.21	0.40
1:A:91:PHE:CD1	1:A:91:PHE:C	2.94	0.40
1:A:324:TYR:C	1:A:324:TYR:CD1	2.95	0.40
1:B:115:PRO:HB2	1:B:117:LEU:O	2.21	0.40
1:B:161:TYR:HB2	1:B:324:TYR:CE2	2.56	0.40
1:B:231:TYR:O	1:B:316:GLY:HA3	2.22	0.40

There are no symmetry-related clashes.

5.3 Torsion angles [i](#)

5.3.1 Protein backbone [i](#)

In the following table, the Percentiles column shows the percent Ramachandran outliers of the chain as a percentile score with respect to all X-ray entries followed by that with respect to entries of similar resolution.

The Analysed column shows the number of residues for which the backbone conformation was analysed, and the total number of residues.

Mol	Chain	Analysed	Favoured	Allowed	Outliers	Percentiles	
1	A	330/341 (97%)	310 (94%)	17 (5%)	3 (1%)	14	14
1	B	333/341 (98%)	303 (91%)	27 (8%)	3 (1%)	14	14
All	All	663/682 (97%)	613 (92%)	44 (7%)	6 (1%)	14	14

All (6) Ramachandran outliers are listed below:

Mol	Chain	Res	Type
1	A	165	ASP
1	A	212	SER
1	B	289	SER
1	A	252	LEU
1	B	252	LEU
1	B	165	ASP

5.3.2 Protein sidechains [i](#)

In the following table, the Percentiles column shows the percent sidechain outliers of the chain as a percentile score with respect to all X-ray entries followed by that with respect to entries of similar resolution.

The Analysed column shows the number of residues for which the sidechain conformation was analysed, and the total number of residues.

Mol	Chain	Analysed	Rotameric	Outliers	Percentiles	
1	A	284/291 (98%)	254 (89%)	30 (11%)	5	5
1	B	287/291 (99%)	254 (88%)	33 (12%)	4	4
All	All	571/582 (98%)	508 (89%)	63 (11%)	5	4

All (63) residues with a non-rotameric sidechain are listed below:

Mol	Chain	Res	Type
1	A	5	ASN
1	A	34	LYS
1	A	53	ARG
1	A	56	THR
1	A	73	LYS
1	A	87	THR
1	A	88	VAL
1	A	98	THR
1	A	113	GLU
1	A	120	MET
1	A	127	VAL
1	A	139	ARG
1	A	145	ASP
1	A	154	LYS
1	A	157	VAL
1	A	164	ARG
1	A	176	ILE
1	A	187	GLU
1	A	197	LYS
1	A	198	THR
1	A	215	LEU
1	A	216	LEU
1	A	237	SER
1	A	240	GLU
1	A	251	ARG
1	A	291	SER
1	A	293	LYS
1	A	301	HIS
1	A	312	THR
1	A	338	LEU
1	B	3	LEU
1	B	8	SER
1	B	42	SER
1	B	53	ARG
1	B	62	LYS
1	B	68	ASP
1	B	71	SER
1	B	82	ARG
1	B	84	SER
1	B	89	SER
1	B	98	THR
1	B	99	VAL
1	B	114	MET

Continued on next page...

Continued from previous page...

Mol	Chain	Res	Type
1	B	120	MET
1	B	156	ASP
1	B	159	SER
1	B	176	ILE
1	B	184	GLN
1	B	198	THR
1	B	200	VAL
1	B	215	LEU
1	B	241	LYS
1	B	242	LEU
1	B	250	LYS
1	B	252	LEU
1	B	261	GLU
1	B	290	TYR
1	B	293	LYS
1	B	294	LYS
1	B	303	MET
1	B	322	LYS
1	B	338	LEU
1	B	340	ARG

Sometimes sidechains can be flipped to improve hydrogen bonding and reduce clashes. All (10) such sidechains are listed below:

Mol	Chain	Res	Type
1	A	194	ASN
1	A	202	GLN
1	A	271	HIS
1	A	331	ASN
1	A	341	HIS
1	B	150	GLN
1	B	184	GLN
1	B	194	ASN
1	B	331	ASN
1	B	341	HIS

5.3.3 RNA [i](#)

There are no RNA molecules in this entry.

5.4 Non-standard residues in protein, DNA, RNA chains [i](#)

There are no non-standard protein/DNA/RNA residues in this entry.

5.5 Carbohydrates [i](#)

There are no oligosaccharides in this entry.

5.6 Ligand geometry [i](#)

4 ligands are modelled in this entry.

In the following table, the Counts columns list the number of bonds (or angles) for which Mogul statistics could be retrieved, the number of bonds (or angles) that are observed in the model and the number of bonds (or angles) that are defined in the Chemical Component Dictionary. The Link column lists molecule types, if any, to which the group is linked. The Z score for a bond length (or angle) is the number of standard deviations the observed value is removed from the expected value. A bond length (or angle) with $|Z| > 2$ is considered an outlier worth inspection. RMSZ is the root-mean-square of all Z scores of the bond lengths (or angles).

Mol	Type	Chain	Res	Link	Bond lengths			Bond angles		
					Counts	RMSZ	# Z > 2	Counts	RMSZ	# Z > 2
2	REM	B	350	-	42,47,47	4.16	3 (7%)	54,67,67	2.54	11 (20%)
3	DMS	A	351	-	3,3,3	2.43	1 (33%)	3,3,3	1.02	0
3	DMS	B	351	-	3,3,3	2.93	1 (33%)	3,3,3	0.42	0
2	REM	A	350	-	42,47,47	3.75	3 (7%)	54,67,67	2.29	12 (22%)

In the following table, the Chirals column lists the number of chiral outliers, the number of chiral centers analysed, the number of these observed in the model and the number defined in the Chemical Component Dictionary. Similar counts are reported in the Torsion and Rings columns. '-' means no outliers of that kind were identified.

Mol	Type	Chain	Res	Link	Chirals	Torsions	Rings
2	REM	B	350	-	-	19/54/64/64	0/4/4/4
2	REM	A	350	-	-	4/54/64/64	0/4/4/4

All (8) bond length outliers are listed below:

Mol	Chain	Res	Type	Atoms	Z	Observed(Å)	Ideal(Å)
2	B	350	REM	C37-S38	-22.09	1.66	1.77
2	A	350	REM	C37-S38	-19.08	1.67	1.77
2	B	350	REM	C39-S38	-14.80	1.67	1.82

Continued on next page...

Continued from previous page...

Mol	Chain	Res	Type	Atoms	Z	Observed(Å)	Ideal(Å)
2	A	350	REM	C39-S38	-14.11	1.68	1.82
3	B	351	DMS	O-S	5.02	1.83	1.50
3	A	351	DMS	O-S	4.04	1.76	1.50
2	B	350	REM	C18-N20	-2.21	1.28	1.35
2	A	350	REM	C12-C13	-2.03	1.47	1.52

All (23) bond angle outliers are listed below:

Mol	Chain	Res	Type	Atoms	Z	Observed(°)	Ideal(°)
2	B	350	REM	C36-C34-C23	-9.30	108.66	119.87
2	B	350	REM	C27-C21-N24	-8.30	99.54	110.20
2	A	350	REM	C27-C21-N24	-7.49	100.59	110.20
2	B	350	REM	C35-C34-C23	-7.36	110.99	119.87
2	A	350	REM	O40-S38-O41	-7.20	108.51	118.05
2	A	350	REM	C35-C34-C23	-6.02	112.62	119.87
2	B	350	REM	O40-S38-O41	-5.50	110.76	118.05
2	B	350	REM	C15-C12-N11	-5.37	99.70	110.83
2	A	350	REM	O41-S38-C39	4.85	112.58	107.75
2	A	350	REM	O26-C23-C22	-3.92	100.30	109.46
2	B	350	REM	C27-C28-C29	-3.26	104.12	111.71
2	A	350	REM	C16-C18-N20	3.15	114.59	108.81
2	B	350	REM	O25-C22-C23	-3.10	102.21	109.46
2	A	350	REM	C36-C34-C23	-3.00	116.26	119.87
2	A	350	REM	C37-C1-C2	2.98	114.80	109.71
2	B	350	REM	O40-S38-C39	2.67	110.41	107.75
2	A	350	REM	C32-C33-C28	-2.65	106.50	112.08
2	B	350	REM	C16-C18-N20	2.63	113.64	108.81
2	A	350	REM	O26-C23-C34	-2.36	105.43	110.12
2	B	350	REM	C31-C32-C33	2.14	115.83	111.42
2	B	350	REM	O41-S38-C39	-2.11	105.65	107.75
2	A	350	REM	C13-C12-N11	-2.10	105.43	111.11
2	A	350	REM	C30-C31-C32	2.04	117.25	111.19

There are no chirality outliers.

All (23) torsion outliers are listed below:

Mol	Chain	Res	Type	Atoms
2	A	350	REM	O26-C23-C34-C36
2	B	350	REM	C43-C39-S38-C37
2	B	350	REM	C42-C39-S38-C37
2	B	350	REM	N24-C21-C27-C28
2	B	350	REM	C21-C22-C23-O26

Continued on next page...

Continued from previous page...

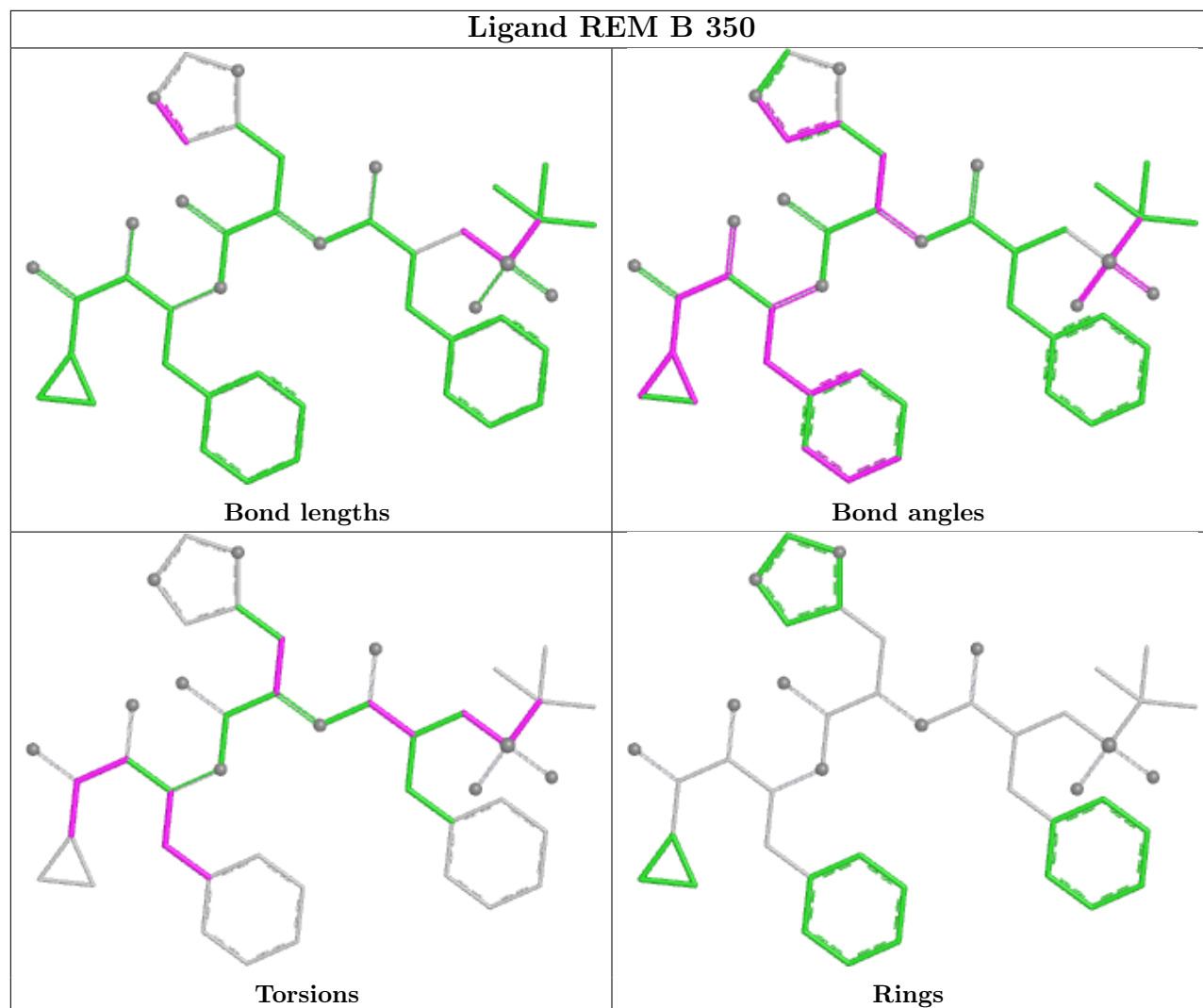
Mol	Chain	Res	Type	Atoms
2	B	350	REM	O25-C22-C23-O26
2	B	350	REM	C22-C23-C34-C36
2	B	350	REM	O26-C23-C34-C36
2	B	350	REM	C21-C27-C28-C33
2	B	350	REM	C13-C12-C15-C16
2	B	350	REM	C21-C27-C28-C29
2	B	350	REM	C1-C37-S38-O41
2	A	350	REM	O26-C23-C34-C35
2	B	350	REM	C43-C39-S38-O41
2	B	350	REM	C42-C39-S38-O40
2	B	350	REM	C1-C37-S38-C39
2	B	350	REM	C44-C39-S38-O41
2	B	350	REM	C42-C39-S38-O41
2	B	350	REM	C43-C39-S38-O40
2	B	350	REM	N11-C12-C15-C16
2	B	350	REM	C37-C1-C2-O3
2	A	350	REM	C13-C12-C15-C16
2	A	350	REM	N11-C12-C13-N24

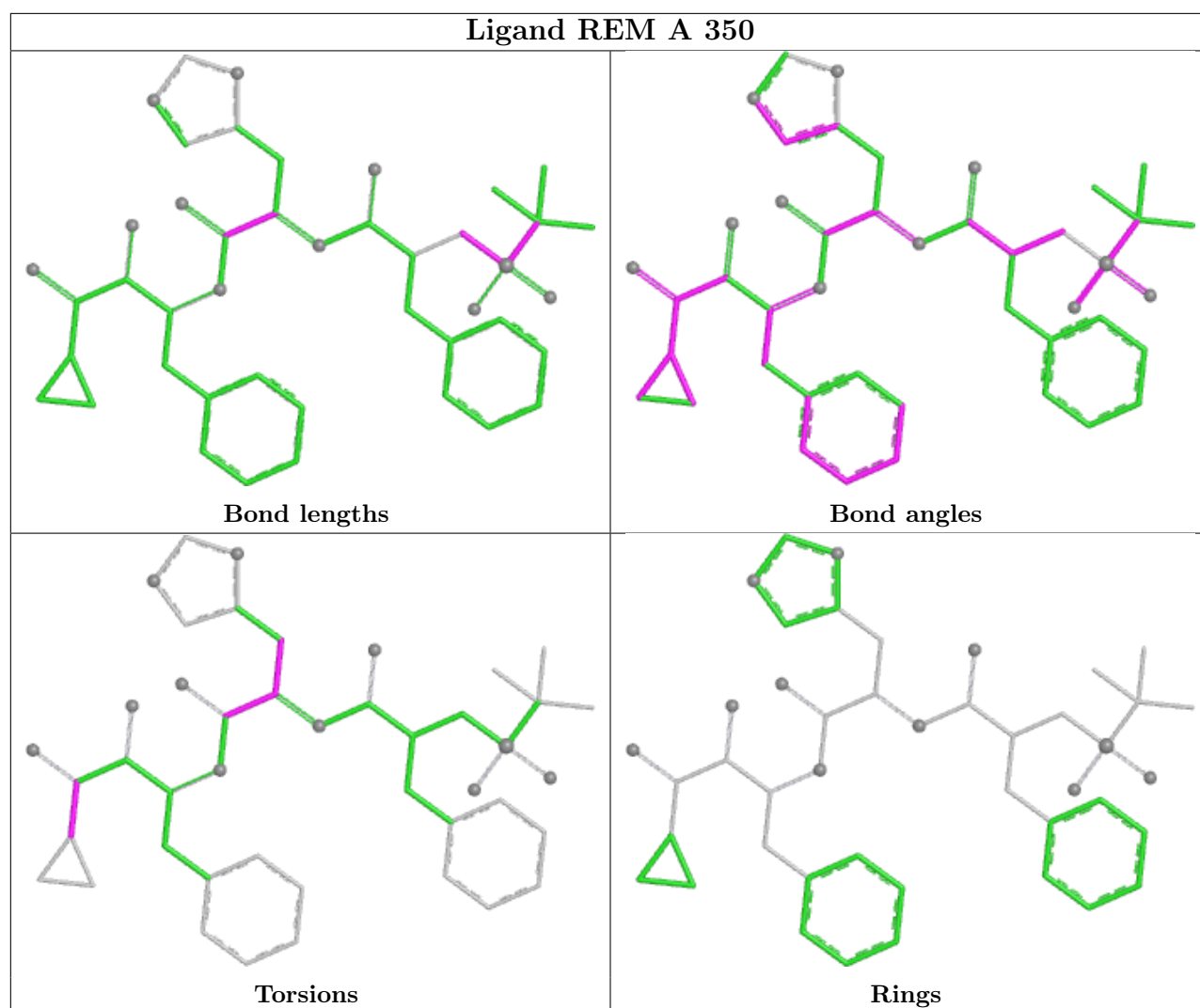
There are no ring outliers.

2 monomers are involved in 5 short contacts:

Mol	Chain	Res	Type	Clashes	Symm-Clashes
2	B	350	REM	3	0
2	A	350	REM	2	0

The following is a two-dimensional graphical depiction of Mogul quality analysis of bond lengths, bond angles, torsion angles, and ring geometry for all instances of the Ligand of Interest. In addition, ligands with molecular weight > 250 and outliers as shown on the validation Tables will also be included. For torsion angles, if less than 5% of the Mogul distribution of torsion angles is within 10 degrees of the torsion angle in question, then that torsion angle is considered an outlier. Any bond that is central to one or more torsion angles identified as an outlier by Mogul will be highlighted in the graph. For rings, the root-mean-square deviation (RMSD) between the ring in question and similar rings identified by Mogul is calculated over all ring torsion angles. If the average RMSD is greater than 60 degrees and the minimal RMSD between the ring in question and any Mogul-identified rings is also greater than 60 degrees, then that ring is considered an outlier. The outliers are highlighted in purple. The color gray indicates Mogul did not find sufficient equivalents in the CSD to analyse the geometry.





5.7 Other polymers [i](#)

There are no such residues in this entry.

5.8 Polymer linkage issues [i](#)

There are no chain breaks in this entry.

6 Fit of model and data [i](#)

6.1 Protein, DNA and RNA chains [i](#)

In the following table, the column labelled ‘#RSRZ> 2’ contains the number (and percentage) of RSRZ outliers, followed by percent RSRZ outliers for the chain as percentile scores relative to all X-ray entries and entries of similar resolution. The OWAB column contains the minimum, median, 95th percentile and maximum values of the occupancy-weighted average B-factor per residue. The column labelled ‘Q< 0.9’ lists the number of (and percentage) of residues with an average occupancy less than 0.9.

Mol	Chain	Analysed	<RSRZ>	#RSRZ>2	OWAB(Å ²)	Q<0.9
1	A	334/341 (97%)	0.22	6 (1%) 67 64	21, 57, 77, 86	0
1	B	337/341 (98%)	0.56	11 (3%) 49 46	43, 68, 90, 96	0
All	All	671/682 (98%)	0.39	17 (2%) 58 55	21, 61, 85, 96	0

All (17) RSRZ outliers are listed below:

Mol	Chain	Res	Type	RSRZ
1	A	4	GLY	3.2
1	B	100	GLY	3.1
1	B	253	PHE	2.7
1	B	60	TYR	2.7
1	B	248	ALA	2.7
1	A	164	ARG	2.6
1	A	86	GLY	2.6
1	B	207	GLY	2.4
1	B	257	VAL	2.4
1	B	148	ILE	2.4
1	A	165	ASP	2.4
1	B	55	TYR	2.2
1	A	221	CYS	2.2
1	B	191	HIS	2.1
1	B	69	SER	2.0
1	A	252	LEU	2.0
1	B	115	PRO	2.0

6.2 Non-standard residues in protein, DNA, RNA chains [i](#)

There are no non-standard protein/DNA/RNA residues in this entry.

6.3 Carbohydrates [i](#)

There are no monosaccharides in this entry.

6.4 Ligands [i](#)

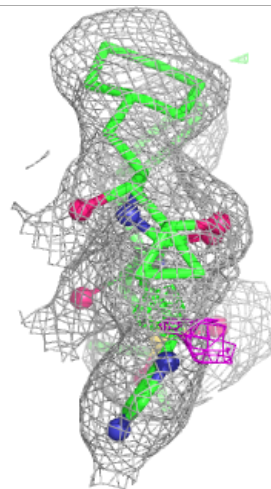
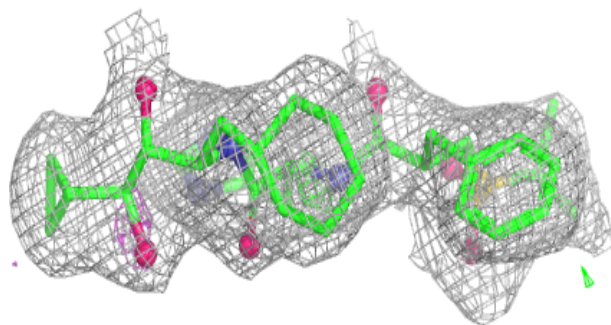
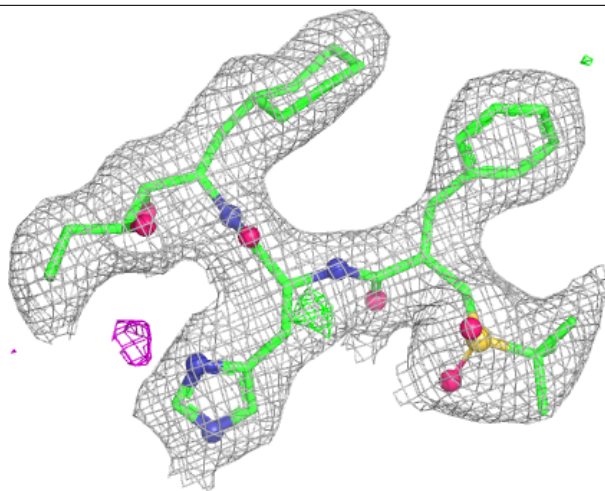
In the following table, the Atoms column lists the number of modelled atoms in the group and the number defined in the chemical component dictionary. The B-factors column lists the minimum, median, 95th percentile and maximum values of B factors of atoms in the group. The column labelled 'Q< 0.9' lists the number of atoms with occupancy less than 0.9.

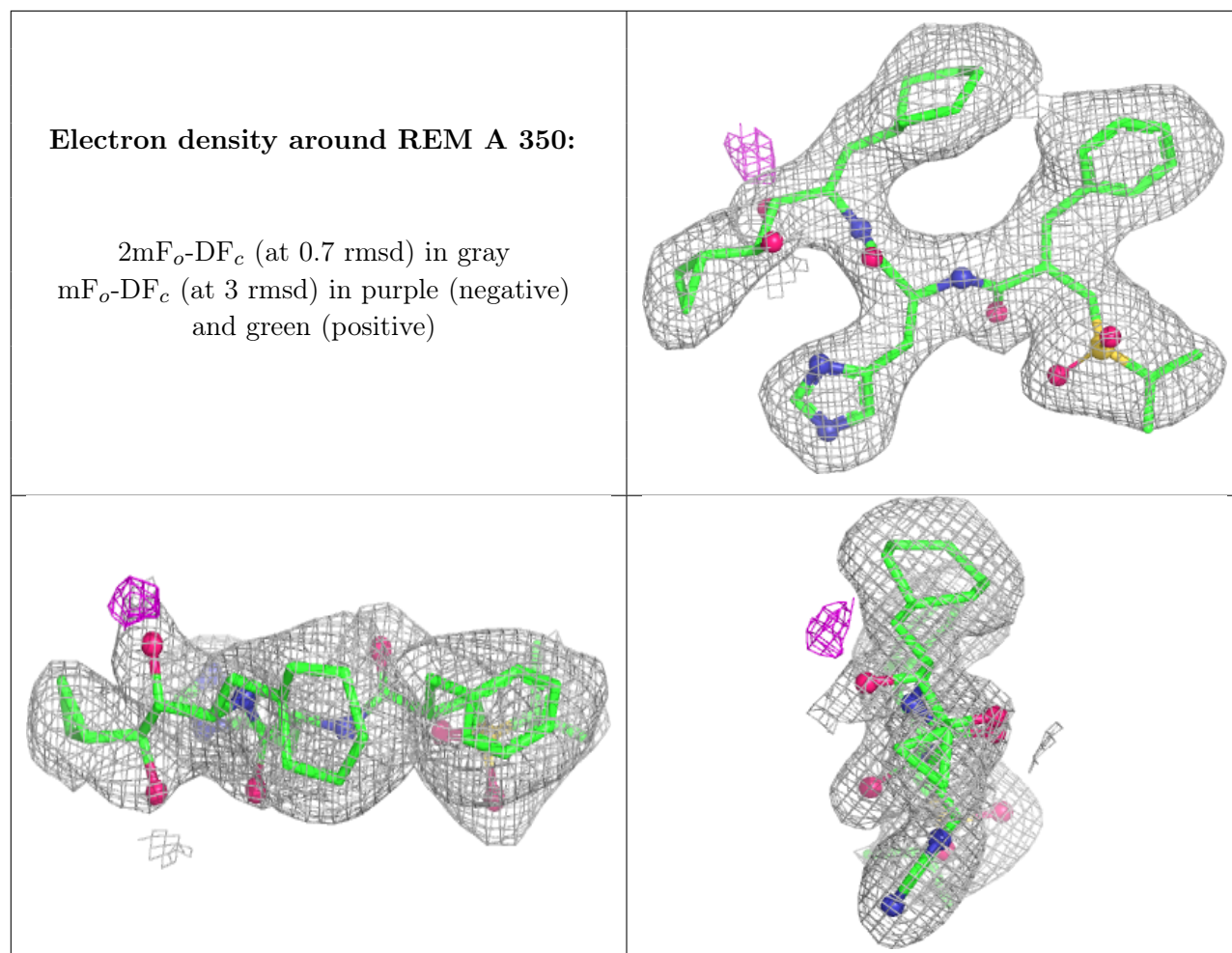
Mol	Type	Chain	Res	Atoms	RSCC	RSR	B-factors(Å ²)	Q<0.9
2	REM	B	350	44/44	0.94	0.09	47,60,63,64	0
2	REM	A	350	44/44	0.95	0.08	26,44,57,60	0
3	DMS	A	351	4/4	0.97	0.09	47,48,48,49	0
3	DMS	B	351	4/4	0.98	0.06	44,45,48,48	0

The following is a graphical depiction of the model fit to experimental electron density of all instances of the Ligand of Interest. In addition, ligands with molecular weight > 250 and outliers as shown on the geometry validation Tables will also be included. Each fit is shown from different orientation to approximate a three-dimensional view.

Electron density around REM B 350:

$2mF_o-DF_c$ (at 0.7 rmsd) in gray
 mF_o-DF_c (at 3 rmsd) in purple (negative)
and green (positive)





6.5 Other polymers [i](#)

There are no such residues in this entry.