



# Full wwPDB X-ray Structure Validation Report ⓘ

Aug 23, 2023 – 08:24 AM EDT

PDB ID : 3D6Z  
Title : Crystal structure of R275E mutant of BMRR bound to DNA and rhodamine  
Authors : Newberry, K.J.; Brennan, R.G.  
Deposited on : 2008-05-20  
Resolution : 2.60 Å(reported)

This is a Full wwPDB X-ray Structure Validation Report for a publicly released PDB entry.

We welcome your comments at [validation@mail.wwpdb.org](mailto:validation@mail.wwpdb.org)

A user guide is available at

<https://www.wwpdb.org/validation/2017/XrayValidationReportHelp>

with specific help available everywhere you see the ⓘ symbol.

The types of validation reports are described at

<http://www.wwpdb.org/validation/2017/FAQs#types>.

---

The following versions of software and data (see [references ⓘ](#)) were used in the production of this report:

MolProbity : 4.02b-467  
Mogul : 1.8.5 (274361), CSD as541be (2020)  
Xtriage (Phenix) : 1.13  
EDS : 2.35  
buster-report : 1.1.7 (2018)  
Percentile statistics : 20191225.v01 (using entries in the PDB archive December 25th 2019)  
Refmac : 5.8.0158  
CCP4 : 7.0.044 (Gargrove)  
Ideal geometry (proteins) : Engh & Huber (2001)  
Ideal geometry (DNA, RNA) : Parkinson et al. (1996)  
Validation Pipeline (wwPDB-VP) : 2.35

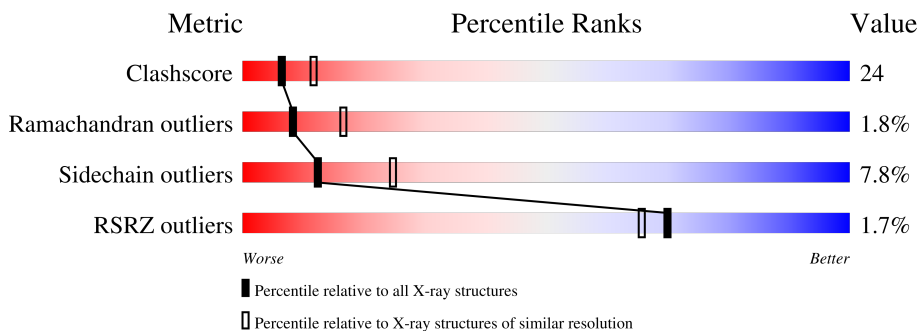
# 1 Overall quality at a glance

The following experimental techniques were used to determine the structure:

*X-RAY DIFFRACTION*

The reported resolution of this entry is 2.60 Å.

Percentile scores (ranging between 0-100) for global validation metrics of the entry are shown in the following graphic. The table shows the number of entries on which the scores are based.



Metric	Whole archive (#Entries)	Similar resolution (#Entries, resolution range(Å))
Clashscore	141614	3518 (2.60-2.60)
Ramachandran outliers	138981	3455 (2.60-2.60)
Sidechain outliers	138945	3455 (2.60-2.60)
RSRZ outliers	127900	3104 (2.60-2.60)

The table below summarises the geometric issues observed across the polymeric chains and their fit to the electron density. The red, orange, yellow and green segments of the lower bar indicate the fraction of residues that contain outliers for  $\geq 3$ , 2, 1 and 0 types of geometric quality criteria respectively. A grey segment represents the fraction of residues that are not modelled. The numeric value for each fraction is indicated below the corresponding segment, with a dot representing fractions  $\leq 5\%$ . The upper red bar (where present) indicates the fraction of residues that have poor fit to the electron density. The numeric value is given above the bar.

Mol	Chain	Length	Quality of chain
1	B	24	
2	A	284	

The following table lists non-polymeric compounds, carbohydrate monomers and non-standard residues in protein, DNA, RNA chains that are outliers for geometric or electron-density-fit criteria:

Mol	Type	Chain	Res	Chirality	Geometry	Clashes	Electron density
3	GOL	A	301	-	X	-	-
3	GOL	A	302	-	X	-	-

*Continued on next page...*

*Continued from previous page...*

<b>Mol</b>	<b>Type</b>	<b>Chain</b>	<b>Res</b>	<b>Chirality</b>	<b>Geometry</b>	<b>Clashes</b>	<b>Electron density</b>
3	GOL	B	200	-	X	-	-
3	GOL	B	201	-	X	-	-
4	RHQ	A	300	-	X	-	-

## 2 Entry composition

There are 5 unique types of molecules in this entry. The entry contains 2919 atoms, of which 0 are hydrogens and 0 are deuteriums.

In the tables below, the ZeroOcc column contains the number of atoms modelled with zero occupancy, the AltConf column contains the number of residues with at least one atom in alternate conformation and the Trace column contains the number of residues modelled with at most 2 atoms.

- Molecule 1 is a DNA chain called BMR promoter DNA.

Mol	Chain	Residues	Atoms					ZeroOcc	AltConf	Trace
			Total	C	N	O	P			
1	B	24	488	232	89	144	23	0	0	0

- Molecule 2 is a protein called Multidrug-efflux transporter 1 regulator.

Mol	Chain	Residues	Atoms					ZeroOcc	AltConf	Trace
			Total	C	N	O	S			
2	A	277	2288	1478	361	441	8	0	0	0

There are 9 discrepancies between the modelled and reference sequences:

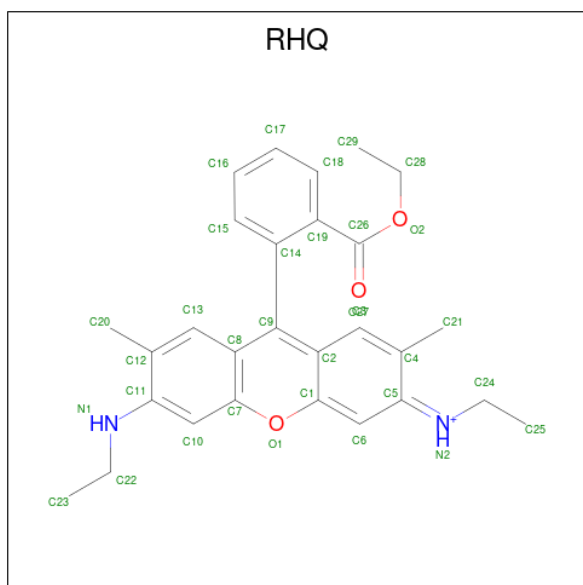
Chain	Residue	Modelled	Actual	Comment	Reference
A	275	GLU	ARG	engineered mutation	UNP P39075
A	277	LEU	ALA	engineered mutation	UNP P39075
A	278	ASP	GLU	engineered mutation	UNP P39075
A	279	HIS	-	expression tag	UNP P39075
A	280	HIS	-	expression tag	UNP P39075
A	281	HIS	-	expression tag	UNP P39075
A	282	HIS	-	expression tag	UNP P39075
A	283	HIS	-	expression tag	UNP P39075
A	284	HIS	-	expression tag	UNP P39075

- Molecule 3 is GLYCEROL (three-letter code: GOL) (formula: C<sub>3</sub>H<sub>8</sub>O<sub>3</sub>).



Mol	Chain	Residues	Atoms			ZeroOcc	AltConf
3	B	1	Total	C	O	0	0
			6	3	3		
3	B	1	Total	C	O	0	0
			6	3	3		
3	A	1	Total	C	O	0	0
			6	3	3		
3	A	1	Total	C	O	0	0
			6	3	3		

- Molecule 4 is RHODAMINE 6G (three-letter code: RHQ) (formula:  $C_{28}H_{31}N_2O_3$ ).



Mol	Chain	Residues	Atoms				ZeroOcc	AltConf
			Total	C	N	O		
4	A	1	33	28	2	3	0	0

- Molecule 5 is water.

Mol	Chain	Residues	Atoms		ZeroOcc	AltConf
5	B	9	Total	O	0	0
			9	9		
5	A	77	Total	O	0	0
			77	77		



## 4 Data and refinement statistics

Property	Value	Source
Space group	P 43 2 2	Depositor
Cell constants a, b, c, $\alpha$ , $\beta$ , $\gamma$	106.50Å 106.50Å 146.14Å 90.00° 90.00° 90.00°	Depositor
Resolution (Å)	52.40 – 2.60 52.44 – 2.60	Depositor EDS
% Data completeness (in resolution range)	99.4 (52.40-2.60) 99.5 (52.44-2.60)	Depositor EDS
$R_{merge}$	0.05	Depositor
$R_{sym}$	0.05	Depositor
$\langle I/\sigma(I) \rangle$ <sup>1</sup>	3.44 (at 2.61Å)	Xtrriage
Refinement program	CNS	Depositor
R, $R_{free}$	0.226 , 0.263 0.219 , (Not available)	Depositor DCC
$R_{free}$ test set	No test flags present.	wwPDB-VP
Wilson B-factor (Å <sup>2</sup> )	55.8	Xtrriage
Anisotropy	0.367	Xtrriage
Bulk solvent $k_{sol}$ (e/Å <sup>3</sup> ), $B_{sol}$ (Å <sup>2</sup> )	0.35 , 57.0	EDS
L-test for twinning <sup>2</sup>	$\langle  L  \rangle = 0.51$ , $\langle L^2 \rangle = 0.34$	Xtrriage
Estimated twinning fraction	No twinning to report.	Xtrriage
$F_o, F_c$ correlation	0.94	EDS
Total number of atoms	2919	wwPDB-VP
Average B, all atoms (Å <sup>2</sup> )	60.0	wwPDB-VP

Xtrriage's analysis on translational NCS is as follows: *The largest off-origin peak in the Patterson function is 3.25% of the height of the origin peak. No significant pseudotranslation is detected.*

<sup>1</sup>Intensities estimated from amplitudes.

<sup>2</sup>Theoretical values of  $\langle |L| \rangle$ ,  $\langle L^2 \rangle$  for acentric reflections are 0.5, 0.333 respectively for untwinned datasets, and 0.375, 0.2 for perfectly twinned datasets.



## 5 Model quality [i](#)

### 5.1 Standard geometry [i](#)

Bond lengths and bond angles in the following residue types are not validated in this section: GOL, RHQ

The Z score for a bond length (or angle) is the number of standard deviations the observed value is removed from the expected value. A bond length (or angle) with  $|Z| > 5$  is considered an outlier worth inspection. RMSZ is the root-mean-square of all Z scores of the bond lengths (or angles).

Mol	Chain	Bond lengths		Bond angles	
		RMSZ	# Z  >5	RMSZ	# Z  >5
1	B	0.35	0/546	0.70	0/841
2	A	0.40	0/2337	0.69	3/3157 (0.1%)
All	All	0.39	0/2883	0.69	3/3998 (0.1%)

There are no bond length outliers.

All (3) bond angle outliers are listed below:

Mol	Chain	Res	Type	Atoms	Z	Observed(°)	Ideal(°)
2	A	212	ILE	N-CA-C	-6.80	92.63	111.00
2	A	76	GLU	N-CA-C	6.03	127.28	111.00
2	A	75	LEU	CA-CB-CG	5.30	127.49	115.30

There are no chirality outliers.

There are no planarity outliers.

### 5.2 Too-close contacts [i](#)

In the following table, the Non-H and H(model) columns list the number of non-hydrogen atoms and hydrogen atoms in the chain respectively. The H(added) column lists the number of hydrogen atoms added and optimized by MolProbity. The Clashes column lists the number of clashes within the asymmetric unit, whereas Symm-Clashes lists symmetry-related clashes.

Mol	Chain	Non-H	H(model)	H(added)	Clashes	Symm-Clashes
1	B	488	0	271	16	0
2	A	2288	0	2285	118	0
3	A	12	0	8	1	0
3	B	12	0	8	0	0
4	A	33	0	31	4	0
5	A	77	0	0	7	0

*Continued on next page...*

*Continued from previous page...*

Mol	Chain	Non-H	H(model)	H(added)	Clashes	Symm-Clashes
5	B	9	0	0	1	0
All	All	2919	0	2603	130	0

The all-atom clashscore is defined as the number of clashes found per 1000 atoms (including hydrogen atoms). The all-atom clashscore for this structure is 24.

All (130) close contacts within the same asymmetric unit are listed below, sorted by their clash magnitude.

Atom-1	Atom-2	Interatomic distance (Å)	Clash overlap (Å)
2:A:158:PHE:HZ	2:A:200:ILE:HG23	1.21	1.02
2:A:156:LYS:HE2	2:A:167:ASN:HD21	1.35	0.92
2:A:258:ILE:HD12	2:A:267:GLU:HG2	1.55	0.87
2:A:158:PHE:CZ	2:A:200:ILE:HG23	2.08	0.87
1:B:-13:DT:H2''	1:B:-12:DG:C8	2.09	0.87
2:A:76:GLU:O	2:A:77:MET:HB3	1.75	0.84
2:A:8:ILE:HG12	2:A:19:ILE:HG23	1.61	0.81
1:B:6:DG:H4'	1:B:6:DG:OP1	1.88	0.73
2:A:158:PHE:HE2	2:A:200:ILE:HG12	1.55	0.70
2:A:247:VAL:HB	2:A:274:ILE:HD11	1.75	0.69
2:A:231:LEU:HB2	5:A:315:HOH:O	1.92	0.68
1:B:5:DG:H2''	1:B:6:DG:O5'	1.94	0.68
2:A:55:LEU:HD22	2:A:59:LEU:HG	1.76	0.68
2:A:142:ILE:HG21	2:A:147:VAL:HG13	1.75	0.68
2:A:278:ASP:N	5:A:345:HOH:O	2.30	0.64
2:A:156:LYS:HE2	2:A:167:ASN:ND2	2.10	0.64
2:A:65:PRO:HG2	2:A:68:GLU:HB2	1.82	0.62
2:A:154:LYS:HG2	5:A:368:HOH:O	1.99	0.62
2:A:30:LEU:O	5:A:367:HOH:O	2.16	0.61
2:A:188:ARG:HD2	2:A:250:ASP:OD2	2.00	0.61
2:A:5:TYR:HE2	2:A:46:THR:HG22	1.65	0.61
1:B:-7:DT:H2''	1:B:-6:DC:O5'	2.01	0.60
2:A:158:PHE:HZ	2:A:200:ILE:CG2	2.07	0.60
2:A:158:PHE:CE2	2:A:200:ILE:HG12	2.34	0.60
2:A:113:LYS:HE2	2:A:117:GLU:OE2	2.02	0.60
2:A:245:LEU:HD13	2:A:276:ILE:HD13	1.83	0.60
1:B:-8:DC:H2'	1:B:-7:DT:H71	1.83	0.59
2:A:40:THR:O	2:A:41:SER:HB2	2.03	0.59
2:A:168:ASN:HD22	2:A:256:ILE:HD12	1.67	0.59
2:A:227:GLU:HB3	5:A:333:HOH:O	2.02	0.59
2:A:127:LEU:N	2:A:127:LEU:HD13	2.18	0.58
2:A:143:GLY:O	2:A:147:VAL:HG22	2.04	0.58

*Continued on next page...*

*Continued from previous page...*

Atom-1	Atom-2	Interatomic distance (Å)	Clash overlap (Å)
1:B:10:DG:H3'	5:B:208:HOH:O	2.04	0.57
1:B:-6:DC:H4'	1:B:-6:DC:OP1	2.04	0.57
2:A:142:ILE:CG2	2:A:147:VAL:HG13	2.34	0.57
2:A:8:ILE:HD11	2:A:22:LEU:HB2	1.88	0.56
2:A:239:TYR:O	2:A:243:ARG:HG2	2.05	0.56
1:B:-6:DC:H2''	1:B:-5:DC:H5'	1.86	0.56
2:A:159:ILE:HG23	2:A:163:ASP:OD2	2.06	0.55
2:A:223:ASN:HD21	2:A:269:ARG:NH1	2.03	0.55
2:A:128:ASP:OD2	2:A:216:ARG:HG2	2.07	0.55
1:B:-12:DG:OP1	1:B:-12:DG:H4'	2.06	0.54
1:B:-6:DC:H2''	1:B:-5:DC:C5'	2.38	0.54
2:A:200:ILE:HG21	2:A:203:ILE:HB	1.91	0.53
2:A:135:ILE:HG13	2:A:194:VAL:HG13	1.90	0.53
2:A:2:LYS:NZ	2:A:4:SER:HB3	2.24	0.52
2:A:8:ILE:HG23	2:A:9:GLY:N	2.25	0.52
2:A:162:ALA:O	2:A:196:THR:HG21	2.10	0.52
2:A:255:ILE:HD13	4:A:300:RHQ:H222	1.91	0.52
1:B:-12:DG:H2''	1:B:-11:DA:C8	2.45	0.52
2:A:133:ARG:HD3	5:A:370:HOH:O	2.09	0.52
2:A:188:ARG:HG2	2:A:189:HIS:ND1	2.24	0.51
2:A:107:LEU:HD13	2:A:195:LEU:HD22	1.92	0.51
2:A:127:LEU:HD22	2:A:129:GLU:HG2	1.93	0.51
2:A:245:LEU:HD13	2:A:276:ILE:CD1	2.40	0.51
2:A:2:LYS:HE3	2:A:4:SER:HB3	1.91	0.51
2:A:2:LYS:CE	2:A:4:SER:HB3	2.41	0.50
2:A:182:ILE:HD11	2:A:230:PHE:HB2	1.91	0.50
2:A:111:ARG:HG2	2:A:111:ARG:HH11	1.76	0.50
2:A:127:LEU:CD2	2:A:129:GLU:HG2	2.42	0.49
2:A:24:TYR:CZ	2:A:28:ILE:HD11	2.47	0.49
2:A:274:ILE:C	2:A:274:ILE:HD13	2.32	0.49
2:A:168:ASN:HB3	3:A:301:GOL:C2	2.43	0.49
2:A:274:ILE:HD13	2:A:275:GLU:N	2.27	0.49
2:A:5:TYR:HE2	2:A:46:THR:CG2	2.26	0.49
2:A:75:LEU:HD11	2:A:80:LEU:HD13	1.95	0.49
2:A:127:LEU:HD13	2:A:127:LEU:H	1.76	0.48
1:B:-9:DC:H3'	2:A:8:ILE:HG21	1.95	0.48
2:A:182:ILE:HD13	2:A:230:PHE:HD2	1.78	0.48
2:A:225:SER:O	2:A:228:HIS:HB2	2.13	0.47
1:B:-9:DC:H3'	2:A:8:ILE:CG2	2.44	0.47
2:A:127:LEU:N	2:A:127:LEU:CD1	2.76	0.47
2:A:68:GLU:O	2:A:71:LYS:HG3	2.14	0.47

*Continued on next page...*

*Continued from previous page...*

Atom-1	Atom-2	Interatomic distance (Å)	Clash overlap (Å)
2:A:8:ILE:CG1	2:A:19:ILE:HG23	2.39	0.47
2:A:118:TYR:CE2	2:A:125:PHE:CZ	3.03	0.47
2:A:124:VAL:HG11	2:A:239:TYR:CG	2.50	0.47
2:A:127:LEU:HD11	2:A:219:CYS:SG	2.55	0.47
2:A:32:LYS:O	2:A:49:GLN:NE2	2.47	0.46
2:A:163:ASP:OD1	2:A:196:THR:HG22	2.14	0.46
2:A:252:TYR:HB2	2:A:273:LYS:HG3	1.97	0.46
2:A:24:TYR:O	2:A:28:ILE:HG12	2.16	0.46
2:A:5:TYR:CE2	2:A:46:THR:HG22	2.48	0.46
2:A:113:LYS:O	2:A:117:GLU:HG2	2.15	0.46
2:A:168:ASN:HD22	2:A:256:ILE:CD1	2.27	0.45
2:A:64:THR:HG22	2:A:68:GLU:HB3	1.98	0.45
2:A:76:GLU:O	2:A:77:MET:CB	2.53	0.45
2:A:200:ILE:CG2	2:A:203:ILE:HB	2.46	0.45
2:A:87:GLN:O	2:A:91:ILE:HG13	2.17	0.44
2:A:101:LEU:O	2:A:105:ILE:HG12	2.18	0.44
2:A:6:TYR:HE1	2:A:47:ASP:HA	1.82	0.44
2:A:72:ALA:HA	2:A:75:LEU:HG	1.99	0.44
2:A:107:LEU:HD23	2:A:110:LYS:HE2	1.98	0.44
2:A:23:ARG:O	2:A:26:ASP:HB3	2.17	0.44
2:A:210:THR:OG1	2:A:211:THR:N	2.51	0.44
2:A:259:HIS:CE1	2:A:264:LYS:HG3	2.54	0.43
2:A:277:LEU:HD23	2:A:277:LEU:HA	1.83	0.43
2:A:254:LEU:C	2:A:255:ILE:HD12	2.39	0.43
2:A:8:ILE:HD11	2:A:22:LEU:CB	2.48	0.43
2:A:198:LYS:O	2:A:200:ILE:N	2.51	0.43
2:A:112:MET:O	2:A:116:MET:HG3	2.18	0.43
2:A:125:PHE:CE1	2:A:127:LEU:HD12	2.53	0.43
2:A:88:GLU:HB3	2:A:92:ARG:HH12	1.82	0.43
2:A:114:ARG:HG2	2:A:114:ARG:HH11	1.83	0.43
2:A:114:ARG:HG2	2:A:114:ARG:NH1	2.33	0.43
2:A:261:SER:HB3	2:A:264:LYS:HG2	2.01	0.43
2:A:255:ILE:HB	4:A:300:RHQ:H222	2.01	0.43
2:A:204:THR:HG23	2:A:206:ASP:OD2	2.18	0.43
2:A:64:THR:CG2	2:A:68:GLU:HB3	2.49	0.42
2:A:33:PRO:HB3	2:A:45:TYR:CZ	2.54	0.42
2:A:200:ILE:O	2:A:200:ILE:HG22	2.17	0.42
1:B:8:DC:OP1	2:A:43:ARG:HG3	2.19	0.42
2:A:118:TYR:CE2	2:A:221:ALA:HB3	2.54	0.42
2:A:261:SER:HA	2:A:262:PRO:HD3	1.92	0.42
2:A:227:GLU:O	2:A:228:HIS:CD2	2.73	0.42

*Continued on next page...*

Continued from previous page...

Atom-1	Atom-2	Interatomic distance (Å)	Clash overlap (Å)
2:A:253:GLU:O	4:A:300:RHQ:H231	2.19	0.42
2:A:253:GLU:HG2	4:A:300:RHQ:H232	2.00	0.42
2:A:159:ILE:HD13	2:A:193:PRO:O	2.20	0.41
2:A:163:ASP:C	2:A:165:PHE:H	2.22	0.41
2:A:203:ILE:O	2:A:203:ILE:HG23	2.20	0.41
2:A:75:LEU:HD13	2:A:80:LEU:CA	2.50	0.41
2:A:197:ASN:ND2	5:A:350:HOH:O	2.53	0.41
2:A:118:TYR:CE2	2:A:221:ALA:CB	3.03	0.41
2:A:76:GLU:O	2:A:76:GLU:CG	2.66	0.41
2:A:28:ILE:O	2:A:29:ASP:HB2	2.20	0.41
1:B:-8:DC:H2''	1:B:-7:DT:C6	2.56	0.41
2:A:72:ALA:O	2:A:75:LEU:HG	2.21	0.41
2:A:158:PHE:CZ	2:A:200:ILE:CG2	2.93	0.41
1:B:-8:DC:H5''	2:A:42:TYR:HA	2.03	0.40
2:A:156:LYS:HB3	2:A:156:LYS:HZ2	1.87	0.40
2:A:8:ILE:CG2	2:A:9:GLY:N	2.84	0.40

There are no symmetry-related clashes.

## 5.3 Torsion angles [i](#)

### 5.3.1 Protein backbone [i](#)

In the following table, the Percentiles column shows the percent Ramachandran outliers of the chain as a percentile score with respect to all X-ray entries followed by that with respect to entries of similar resolution.

The Analysed column shows the number of residues for which the backbone conformation was analysed, and the total number of residues.

Mol	Chain	Analysed	Favoured	Allowed	Outliers	Percentiles
2	A	275/284 (97%)	252 (92%)	18 (6%)	5 (2%)	<b>8</b> <b>16</b>

All (5) Ramachandran outliers are listed below:

Mol	Chain	Res	Type
2	A	199	GLN
2	A	201	SER
2	A	5	TYR
2	A	200	ILE
2	A	202	SER

### 5.3.2 Protein sidechains [i](#)

In the following table, the Percentiles column shows the percent sidechain outliers of the chain as a percentile score with respect to all X-ray entries followed by that with respect to entries of similar resolution.

The Analysed column shows the number of residues for which the sidechain conformation was analysed, and the total number of residues.

Mol	Chain	Analysed	Rotameric	Outliers	Percentiles
2	A	255/262 (97%)	235 (92%)	20 (8%)	12 25

All (20) residues with a non-rotameric sidechain are listed below:

Mol	Chain	Res	Type
2	A	5	TYR
2	A	55	LEU
2	A	71	LYS
2	A	76	GLU
2	A	77	MET
2	A	98	LEU
2	A	107	LEU
2	A	118	TYR
2	A	127	LEU
2	A	131	GLU
2	A	147	VAL
2	A	165	PHE
2	A	167	ASN
2	A	200	ILE
2	A	204	THR
2	A	207	MET
2	A	243	ARG
2	A	269	ARG
2	A	274	ILE
2	A	278	ASP

Sometimes sidechains can be flipped to improve hydrogen bonding and reduce clashes. All (9) such sidechains are listed below:

Mol	Chain	Res	Type
2	A	16	ASN
2	A	73	GLN
2	A	136	GLN
2	A	167	ASN
2	A	168	ASN

*Continued on next page...*

Continued from previous page...

Mol	Chain	Res	Type
2	A	197	ASN
2	A	223	ASN
2	A	228	HIS
2	A	265	GLN

### 5.3.3 RNA [i](#)

There are no RNA molecules in this entry.

### 5.4 Non-standard residues in protein, DNA, RNA chains [i](#)

There are no non-standard protein/DNA/RNA residues in this entry.

### 5.5 Carbohydrates [i](#)

There are no monosaccharides in this entry.

### 5.6 Ligand geometry [i](#)

5 ligands are modelled in this entry.

In the following table, the Counts columns list the number of bonds (or angles) for which Mogul statistics could be retrieved, the number of bonds (or angles) that are observed in the model and the number of bonds (or angles) that are defined in the Chemical Component Dictionary. The Link column lists molecule types, if any, to which the group is linked. The Z score for a bond length (or angle) is the number of standard deviations the observed value is removed from the expected value. A bond length (or angle) with  $|Z| > 2$  is considered an outlier worth inspection. RMSZ is the root-mean-square of all Z scores of the bond lengths (or angles).

Mol	Type	Chain	Res	Link	Bond lengths			Bond angles		
					Counts	RMSZ	# Z  > 2	Counts	RMSZ	# Z  > 2
3	GOL	B	201	-	5,5,5	4.36	5 (100%)	5,5,5	5.86	3 (60%)
4	RHQ	A	300	-	34,36,36	6.14	26 (76%)	39,51,51	2.95	19 (48%)
3	GOL	B	200	-	5,5,5	4.61	5 (100%)	5,5,5	5.88	3 (60%)
3	GOL	A	302	-	5,5,5	4.46	5 (100%)	5,5,5	5.81	3 (60%)
3	GOL	A	301	-	5,5,5	4.55	5 (100%)	5,5,5	5.77	3 (60%)

In the following table, the Chirals column lists the number of chiral outliers, the number of chiral centers analysed, the number of these observed in the model and the number defined in the Chemical Component Dictionary. Similar counts are reported in the Torsion and Rings columns.

'-' means no outliers of that kind were identified.

Mol	Type	Chain	Res	Link	Chirals	Torsions	Rings
3	GOL	B	201	-	-	2/4/4/4	-
4	RHQ	A	300	-	-	4/11/21/21	0/4/4/4
3	GOL	B	200	-	-	2/4/4/4	-
3	GOL	A	302	-	-	3/4/4/4	-
3	GOL	A	301	-	-	2/4/4/4	-

All (46) bond length outliers are listed below:

Mol	Chain	Res	Type	Atoms	Z	Observed(Å)	Ideal(Å)
4	A	300	RHQ	C8-C7	13.72	1.60	1.41
4	A	300	RHQ	O1-C7	10.82	1.53	1.36
4	A	300	RHQ	C13-C8	10.77	1.60	1.41
4	A	300	RHQ	C2-C9	9.80	1.68	1.43
4	A	300	RHQ	C2-C1	9.42	1.54	1.41
4	A	300	RHQ	C6-C5	9.30	1.51	1.40
4	A	300	RHQ	C6-C1	9.25	1.55	1.37
4	A	300	RHQ	C11-C12	9.07	1.58	1.40
4	A	300	RHQ	O1-C1	7.62	1.48	1.36
3	B	200	GOL	C3-C2	-7.58	1.20	1.51
3	A	301	GOL	C3-C2	-7.56	1.20	1.51
4	A	300	RHQ	C19-C14	7.49	1.57	1.43
3	A	302	GOL	C3-C2	-7.38	1.21	1.51
4	A	300	RHQ	O2-C26	7.01	1.51	1.33
3	B	201	GOL	C3-C2	-6.91	1.23	1.51
4	A	300	RHQ	C17-C16	6.66	1.55	1.38
4	A	300	RHQ	C21-C4	5.95	1.62	1.51
4	A	300	RHQ	C18-C19	5.46	1.47	1.38
3	B	200	GOL	O1-C1	4.85	1.62	1.42
3	A	302	GOL	O1-C1	4.60	1.61	1.42
3	A	301	GOL	O1-C1	4.50	1.61	1.42
3	B	201	GOL	O1-C1	4.49	1.61	1.42
4	A	300	RHQ	C15-C14	4.44	1.51	1.42
4	A	300	RHQ	C17-C18	4.34	1.48	1.38
4	A	300	RHQ	O27-C26	4.27	1.34	1.22
3	B	201	GOL	O3-C3	3.55	1.57	1.42
3	A	302	GOL	O3-C3	3.45	1.57	1.42
4	A	300	RHQ	C3-C4	3.40	1.54	1.37
4	A	300	RHQ	C10-C7	3.37	1.44	1.37
3	A	301	GOL	O3-C3	3.23	1.56	1.42
4	A	300	RHQ	C4-C5	3.22	1.48	1.43
4	A	300	RHQ	C19-C26	-3.22	1.43	1.50

*Continued on next page...*



Continued from previous page...

Mol	Chain	Res	Type	Atoms	Z	Observed(Å)	Ideal(Å)
3	B	200	GOL	O3-C3	3.19	1.55	1.42
4	A	300	RHQ	C16-C15	3.14	1.43	1.36
4	A	300	RHQ	C20-C12	3.07	1.57	1.51
3	B	201	GOL	C1-C2	-2.93	1.39	1.51
3	B	200	GOL	O2-C2	-2.87	1.34	1.43
3	A	301	GOL	O2-C2	-2.87	1.34	1.43
3	A	301	GOL	C1-C2	-2.74	1.40	1.51
4	A	300	RHQ	C13-C12	2.72	1.44	1.37
3	B	200	GOL	C1-C2	-2.59	1.41	1.51
3	A	302	GOL	C1-C2	-2.49	1.41	1.51
4	A	300	RHQ	C10-C11	2.48	1.42	1.37
3	B	201	GOL	O2-C2	-2.47	1.36	1.43
4	A	300	RHQ	C22-N1	2.46	1.54	1.46
3	A	302	GOL	O2-C2	-2.41	1.36	1.43

All (31) bond angle outliers are listed below:

Mol	Chain	Res	Type	Atoms	Z	Observed(°)	Ideal(°)
3	B	201	GOL	O3-C3-C2	10.91	162.50	110.20
3	B	200	GOL	O3-C3-C2	10.87	162.33	110.20
3	A	301	GOL	O3-C3-C2	10.55	160.79	110.20
3	A	302	GOL	O3-C3-C2	10.54	160.74	110.20
4	A	300	RHQ	C12-C11-N1	7.14	128.44	119.38
3	A	302	GOL	O2-C2-C3	6.75	138.87	109.12
3	B	200	GOL	O2-C2-C3	6.67	138.49	109.12
3	A	301	GOL	O2-C2-C3	6.66	138.48	109.12
3	B	201	GOL	O2-C2-C3	6.52	137.84	109.12
4	A	300	RHQ	C10-C11-N1	-6.46	111.42	121.58
4	A	300	RHQ	C8-C9-C2	-5.80	109.95	120.40
4	A	300	RHQ	C28-O2-C26	5.54	129.35	116.46
4	A	300	RHQ	C18-C19-C14	5.48	125.86	119.61
4	A	300	RHQ	C11-C10-C7	4.55	123.79	119.46
4	A	300	RHQ	C12-C13-C8	-3.66	120.40	123.04
4	A	300	RHQ	C22-N1-C11	3.60	130.67	123.21
4	A	300	RHQ	C3-C2-C9	-3.51	117.26	122.71
3	A	302	GOL	O1-C1-C2	3.40	126.51	110.20
4	A	300	RHQ	O1-C7-C8	3.31	124.40	121.20
4	A	300	RHQ	C20-C12-C11	3.23	124.91	121.25
3	B	200	GOL	O1-C1-C2	3.21	125.57	110.20
3	A	301	GOL	O1-C1-C2	3.15	125.33	110.20
3	B	201	GOL	O1-C1-C2	3.06	124.86	110.20
4	A	300	RHQ	O1-C1-C2	2.69	123.80	121.20

Continued on next page...

Continued from previous page...

Mol	Chain	Res	Type	Atoms	Z	Observed(°)	Ideal(°)
4	A	300	RHQ	C16-C15-C14	2.57	124.46	120.89
4	A	300	RHQ	C3-C2-C1	2.56	119.28	116.39
4	A	300	RHQ	C10-C7-C8	-2.43	120.35	123.05
4	A	300	RHQ	C13-C8-C9	-2.39	118.99	122.71
4	A	300	RHQ	O1-C1-C6	-2.25	113.36	116.03
4	A	300	RHQ	C20-C12-C13	-2.22	115.03	120.34
4	A	300	RHQ	O2-C26-O27	2.16	128.04	123.67

There are no chirality outliers.

All (13) torsion outliers are listed below:

Mol	Chain	Res	Type	Atoms
3	B	200	GOL	O1-C1-C2-C3
3	B	200	GOL	C1-C2-C3-O3
3	B	201	GOL	C1-C2-C3-O3
3	A	301	GOL	C1-C2-C3-O3
3	A	302	GOL	O1-C1-C2-C3
3	A	302	GOL	C1-C2-C3-O3
4	A	300	RHQ	C12-C11-N1-C22
4	A	300	RHQ	C10-C11-N1-C22
3	B	201	GOL	O1-C1-C2-O2
3	A	301	GOL	O1-C1-C2-O2
4	A	300	RHQ	C23-C22-N1-C11
3	A	302	GOL	O1-C1-C2-O2
4	A	300	RHQ	C29-C28-O2-C26

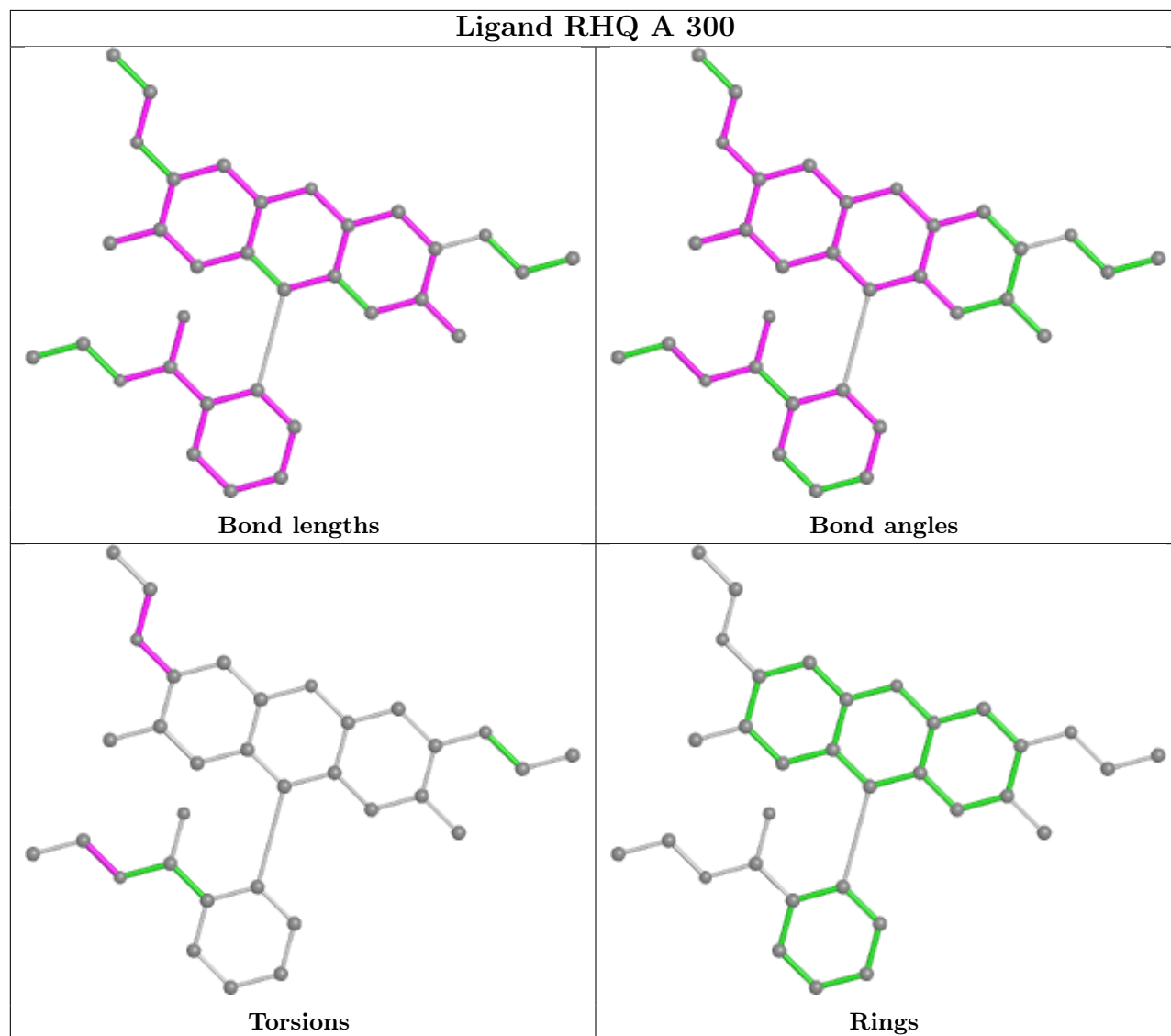
There are no ring outliers.

2 monomers are involved in 5 short contacts:

Mol	Chain	Res	Type	Clashes	Symm-Clashes
4	A	300	RHQ	4	0
3	A	301	GOL	1	0

The following is a two-dimensional graphical depiction of Mogul quality analysis of bond lengths, bond angles, torsion angles, and ring geometry for all instances of the Ligand of Interest. In addition, ligands with molecular weight > 250 and outliers as shown on the validation Tables will also be included. For torsion angles, if less than 5% of the Mogul distribution of torsion angles is within 10 degrees of the torsion angle in question, then that torsion angle is considered an outlier. Any bond that is central to one or more torsion angles identified as an outlier by Mogul will be highlighted in the graph. For rings, the root-mean-square deviation (RMSD) between the ring in question and similar rings identified by Mogul is calculated over all ring torsion angles. If the average RMSD is greater than 60 degrees and the minimal RMSD between the ring in question and

any Mogul-identified rings is also greater than 60 degrees, then that ring is considered an outlier. The outliers are highlighted in purple. The color gray indicates Mogul did not find sufficient equivalents in the CSD to analyse the geometry.



## 5.7 Other polymers [i](#)

There are no such residues in this entry.

## 5.8 Polymer linkage issues [i](#)

There are no chain breaks in this entry.

## 6 Fit of model and data [i](#)

### 6.1 Protein, DNA and RNA chains [i](#)

In the following table, the column labelled ‘#RSRZ> 2’ contains the number (and percentage) of RSRZ outliers, followed by percent RSRZ outliers for the chain as percentile scores relative to all X-ray entries and entries of similar resolution. The OWAB column contains the minimum, median, 95<sup>th</sup> percentile and maximum values of the occupancy-weighted average B-factor per residue. The column labelled ‘Q< 0.9’ lists the number of (and percentage) of residues with an average occupancy less than 0.9.

Mol	Chain	Analysed	<RSRZ>	#RSRZ>2	OWAB(Å <sup>2</sup> )	Q<0.9
1	B	24/24 (100%)	0.58	3 (12%) <b>3</b> <b>2</b>	44, 78, 129, 139	0
2	A	277/284 (97%)	-0.06	2 (0%) <b>87</b> <b>86</b>	30, 50, 92, 120	0
All	All	301/308 (97%)	-0.01	5 (1%) <b>70</b> <b>66</b>	30, 52, 95, 139	0

All (5) RSRZ outliers are listed below:

Mol	Chain	Res	Type	RSRZ
1	B	-13	DT	5.7
1	B	-12	DG	4.1
2	A	5	TYR	2.9
1	B	12	DC	2.6
2	A	77	MET	2.1

### 6.2 Non-standard residues in protein, DNA, RNA chains [i](#)

There are no non-standard protein/DNA/RNA residues in this entry.

### 6.3 Carbohydrates [i](#)

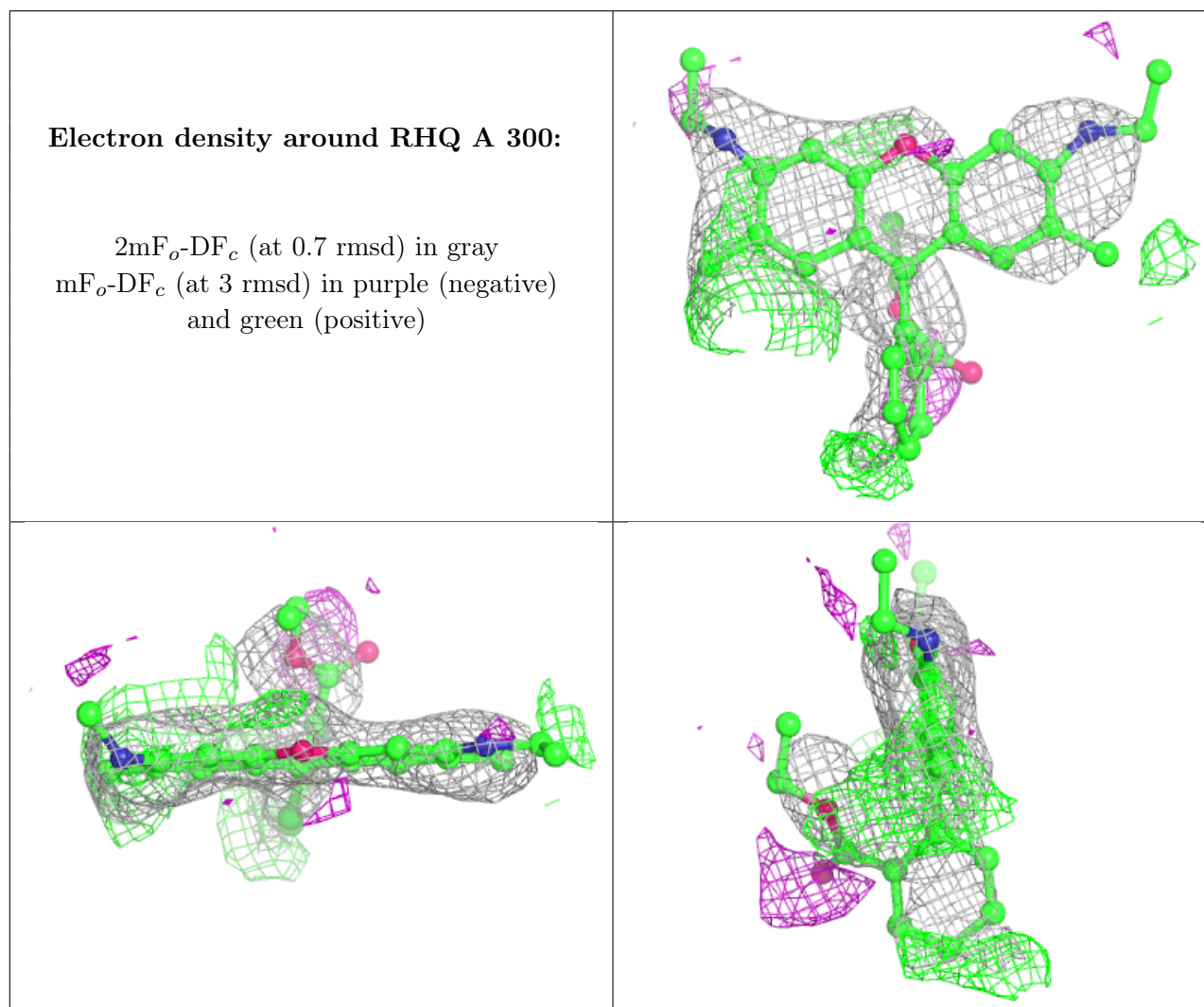
There are no monosaccharides in this entry.

### 6.4 Ligands [i](#)

In the following table, the Atoms column lists the number of modelled atoms in the group and the number defined in the chemical component dictionary. The B-factors column lists the minimum, median, 95<sup>th</sup> percentile and maximum values of B factors of atoms in the group. The column labelled ‘Q< 0.9’ lists the number of atoms with occupancy less than 0.9.

Mol	Type	Chain	Res	Atoms	RSCC	RSR	B-factors( $\text{\AA}^2$ )	Q<0.9
3	GOL	A	302	6/6	0.66	0.32	73,89,90,91	0
3	GOL	B	201	6/6	0.78	0.19	75,81,87,87	0
4	RHQ	A	300	33/33	0.79	0.38	58,100,117,119	0
3	GOL	B	200	6/6	0.81	0.24	75,82,86,87	0
3	GOL	A	301	6/6	0.86	0.33	87,89,94,100	0

The following is a graphical depiction of the model fit to experimental electron density of all instances of the Ligand of Interest. In addition, ligands with molecular weight > 250 and outliers as shown on the geometry validation Tables will also be included. Each fit is shown from different orientation to approximate a three-dimensional view.



## 6.5 Other polymers [i](#)

There are no such residues in this entry.