



Full wwPDB X-ray Structure Validation Report ⓘ

Oct 24, 2023 – 07:31 PM EDT

PDB ID : 2ZXB
Title : alpha-L-fucosidase complexed with inhibitor, ph-6FNJ
Authors : Wu, H.-J.; Ko, T.-P.; Ho, C.-W.; Lin, C.-H.; Wang, A.H.-J.
Deposited on : 2008-12-22
Resolution : 2.61 Å(reported)

This is a Full wwPDB X-ray Structure Validation Report for a publicly released PDB entry.

We welcome your comments at validation@mail.wwpdb.org

A user guide is available at

<https://www.wwpdb.org/validation/2017/XrayValidationReportHelp>

with specific help available everywhere you see the ⓘ symbol.

The types of validation reports are described at

<http://www.wwpdb.org/validation/2017/FAQs#types>.

The following versions of software and data (see [references ⓘ](#)) were used in the production of this report:

MolProbity : 4.02b-467
Mogul : 1.8.5 (274361), CSD as541be (2020)
Xtrriage (Phenix) : 1.13
EDS : 2.36
Percentile statistics : 20191225.v01 (using entries in the PDB archive December 25th 2019)
Refmac : 5.8.0158
CCP4 : 7.0.044 (Gargrove)
Ideal geometry (proteins) : Engh & Huber (2001)
Ideal geometry (DNA, RNA) : Parkinson et al. (1996)
Validation Pipeline (wwPDB-VP) : 2.36

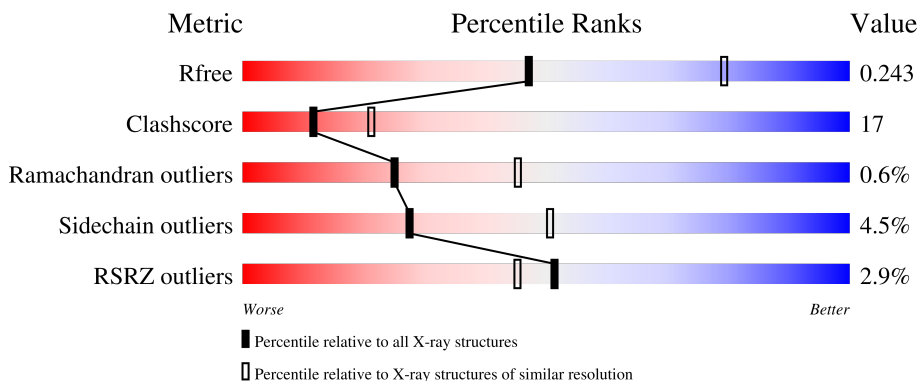
1 Overall quality at a glance

The following experimental techniques were used to determine the structure:

X-RAY DIFFRACTION

The reported resolution of this entry is 2.61 Å.

Percentile scores (ranging between 0-100) for global validation metrics of the entry are shown in the following graphic. The table shows the number of entries on which the scores are based.



Metric	Whole archive (#Entries)	Similar resolution (#Entries, resolution range(Å))
R_{free}	130704	3797 (2.64-2.60)
Clashscore	141614	4168 (2.64-2.60)
Ramachandran outliers	138981	4093 (2.64-2.60)
Sidechain outliers	138945	4093 (2.64-2.60)
RSRZ outliers	127900	3731 (2.64-2.60)

The table below summarises the geometric issues observed across the polymeric chains and their fit to the electron density. The red, orange, yellow and green segments of the lower bar indicate the fraction of residues that contain outliers for ≥ 3 , 2, 1 and 0 types of geometric quality criteria respectively. A grey segment represents the fraction of residues that are not modelled. The numeric value for each fraction is indicated below the corresponding segment, with a dot representing fractions $\leq 5\%$. The upper red bar (where present) indicates the fraction of residues that have poor fit to the electron density. The numeric value is given above the bar.

Mol	Chain	Length	Quality of chain
1	A	455	 4% 63% 31%
1	B	455	 2% 65% 30%

The following table lists non-polymeric compounds, carbohydrate monomers and non-standard residues in protein, DNA, RNA chains that are outliers for geometric or electron-density-fit criteria:

Mol	Type	Chain	Res	Chirality	Geometry	Clashes	Electron density
2	ZXB	A	901	-	-	X	X
2	ZXB	B	902	-	-	-	X

2 Entry composition

There are 3 unique types of molecules in this entry. The entry contains 7668 atoms, of which 0 are hydrogens and 0 are deuteriums.

In the tables below, the ZeroOcc column contains the number of atoms modelled with zero occupancy, the AltConf column contains the number of residues with at least one atom in alternate conformation and the Trace column contains the number of residues modelled with at most 2 atoms.

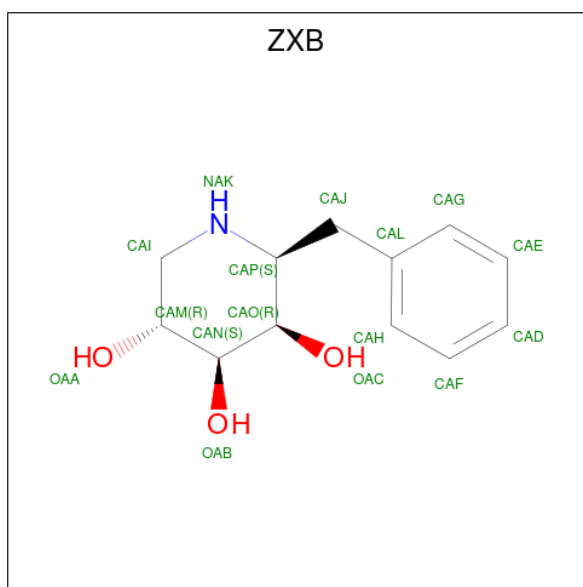
- Molecule 1 is a protein called Alpha-L-fucosidase, putative.

Mol	Chain	Residues	Atoms					ZeroOcc	AltConf	Trace
			Total	C	N	O	S			
1	A	442	3648	2377	600	663	8	0	0	0
1	B	442	3648	2377	600	663	8	0	0	0

There are 12 discrepancies between the modelled and reference sequences:

Chain	Residue	Modelled	Actual	Comment	Reference
A	450	HIS	-	expression tag	UNP Q9WYE2
A	451	HIS	-	expression tag	UNP Q9WYE2
A	452	HIS	-	expression tag	UNP Q9WYE2
A	453	HIS	-	expression tag	UNP Q9WYE2
A	454	HIS	-	expression tag	UNP Q9WYE2
A	455	HIS	-	expression tag	UNP Q9WYE2
B	450	HIS	-	expression tag	UNP Q9WYE2
B	451	HIS	-	expression tag	UNP Q9WYE2
B	452	HIS	-	expression tag	UNP Q9WYE2
B	453	HIS	-	expression tag	UNP Q9WYE2
B	454	HIS	-	expression tag	UNP Q9WYE2
B	455	HIS	-	expression tag	UNP Q9WYE2

- Molecule 2 is (2S,3R,4S,5R)-2-benzylpiperidine-3,4,5-triol (three-letter code: ZXB) (formula: C₁₂H₁₇NO₃).



Mol	Chain	Residues	Atoms				ZeroOcc	AltConf
			Total	C	N	O		
2	A	1	16	12	1	3	0	0
2	B	1	16	12	1	3	0	0

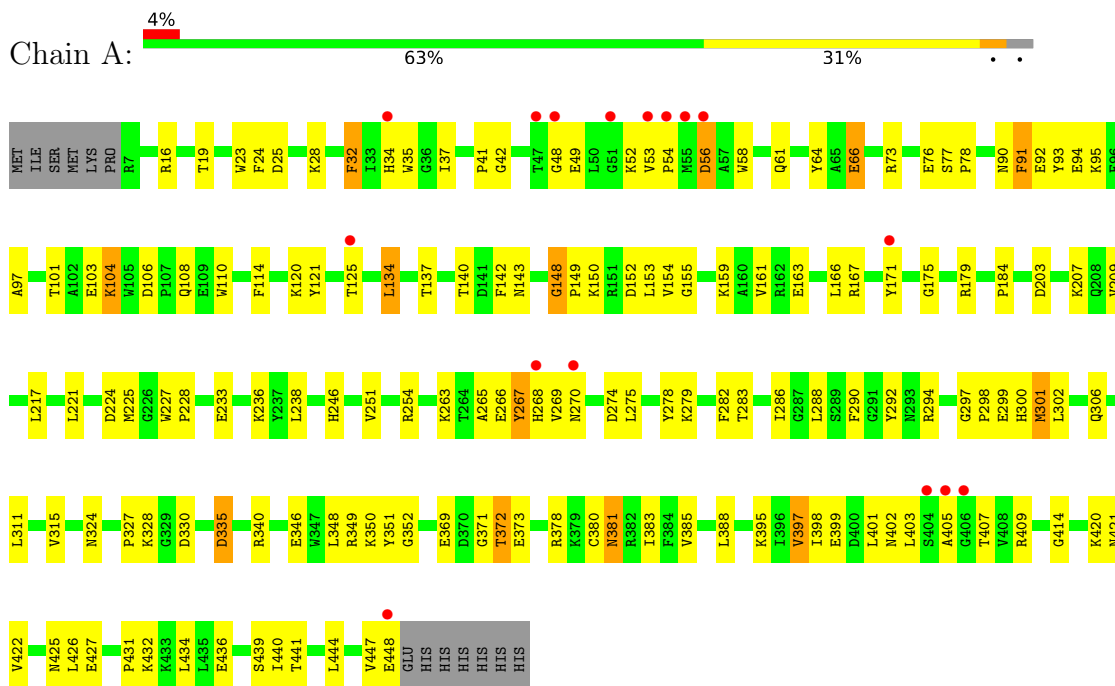
- Molecule 3 is water.

Mol	Chain	Residues	Atoms		ZeroOcc	AltConf
			Total	O		
3	A	168	168	168	0	0
3	B	172	172	172	0	0

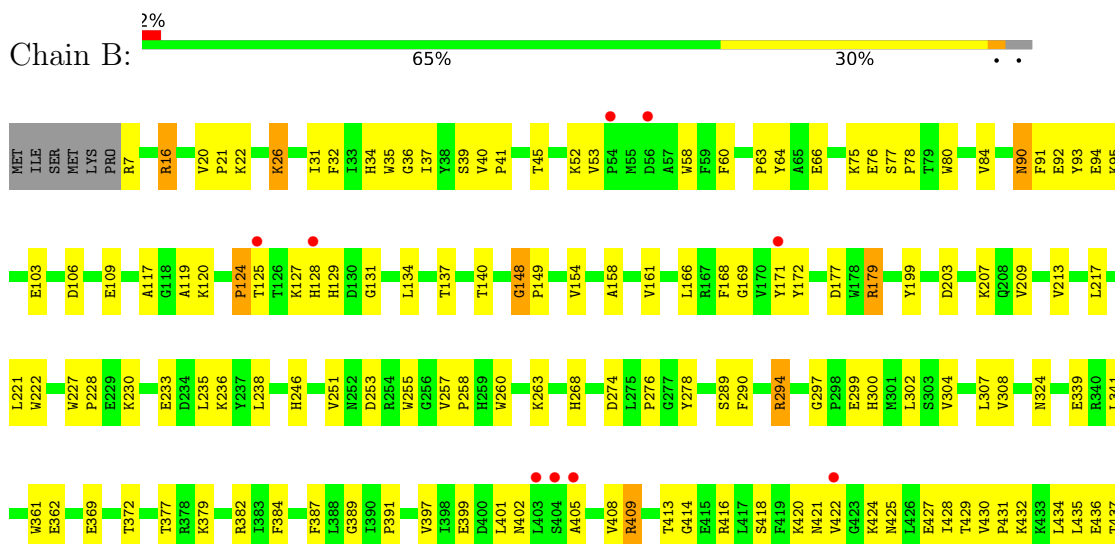
3 Residue-property plots [i](#)

These plots are drawn for all protein, RNA, DNA and oligosaccharide chains in the entry. The first graphic for a chain summarises the proportions of the various outlier classes displayed in the second graphic. The second graphic shows the sequence view annotated by issues in geometry and electron density. Residues are color-coded according to the number of geometric quality criteria for which they contain at least one outlier: green = 0, yellow = 1, orange = 2 and red = 3 or more. A red dot above a residue indicates a poor fit to the electron density ($RSRZ > 2$). Stretches of 2 or more consecutive residues without any outlier are shown as a green connector. Residues present in the sample, but not in the model, are shown in grey.

- Molecule 1: Alpha-L-fucosidase, putative



- Molecule 1: Alpha-L-fucosidase, putative



E438	E439	T440	T441	L442	E445	A446	V447	E448	GLU	HIS	HIS	HIS	HIS	HIS	HIS
------	------	------	------	------	------	------	------	------	-----	-----	-----	-----	-----	-----	-----

4 Data and refinement statistics

Property	Value	Source
Space group	H 3 2	Depositor
Cell constants a, b, c, α , β , γ	179.52Å 179.52Å 169.10Å 90.00° 90.00° 120.00°	Depositor
Resolution (Å)	30.00 – 2.61 29.92 – 2.61	Depositor EDS
% Data completeness (in resolution range)	95.8 (30.00-2.61) 95.8 (29.92-2.61)	Depositor EDS
R_{merge}	0.07	Depositor
R_{sym}	(Not available)	Depositor
$\langle I/\sigma(I) \rangle$ ¹	3.48 (at 2.61Å)	Xtrriage
Refinement program	CNS	Depositor
R, R_{free}	0.172 , 0.244 0.169 , 0.243	Depositor DCC
R_{free} test set	1515 reflections (4.96%)	wwPDB-VP
Wilson B-factor (Å ²)	45.0	Xtrriage
Anisotropy	0.038	Xtrriage
Bulk solvent k_{sol} (e/Å ³), B_{sol} (Å ²)	0.36 , 61.3	EDS
L-test for twinning ²	$\langle L \rangle = 0.49$, $\langle L^2 \rangle = 0.32$	Xtrriage
Estimated twinning fraction	No twinning to report.	Xtrriage
F_o, F_c correlation	0.96	EDS
Total number of atoms	7668	wwPDB-VP
Average B, all atoms (Å ²)	44.0	wwPDB-VP

Xtrriage's analysis on translational NCS is as follows: *The largest off-origin peak in the Patterson function is 3.12% of the height of the origin peak. No significant pseudotranslation is detected.*

¹Intensities estimated from amplitudes.

²Theoretical values of $\langle |L| \rangle$, $\langle L^2 \rangle$ for acentric reflections are 0.5, 0.333 respectively for untwinned datasets, and 0.375, 0.2 for perfectly twinned datasets.

5 Model quality [i](#)

5.1 Standard geometry [i](#)

Bond lengths and bond angles in the following residue types are not validated in this section: ZXB

The Z score for a bond length (or angle) is the number of standard deviations the observed value is removed from the expected value. A bond length (or angle) with $|Z| > 5$ is considered an outlier worth inspection. RMSZ is the root-mean-square of all Z scores of the bond lengths (or angles).

Mol	Chain	Bond lengths		Bond angles	
		RMSZ	# Z >5	RMSZ	# Z >5
1	A	0.95	1/3768 (0.0%)	0.96	4/5120 (0.1%)
1	B	0.95	0/3768	0.95	0/5120
All	All	0.95	1/7536 (0.0%)	0.95	4/10240 (0.0%)

All (1) bond length outliers are listed below:

Mol	Chain	Res	Type	Atoms	Z	Observed(Å)	Ideal(Å)
1	A	94	GLU	CG-CD	5.59	1.60	1.51

All (4) bond angle outliers are listed below:

Mol	Chain	Res	Type	Atoms	Z	Observed(°)	Ideal(°)
1	A	152	ASP	CB-CG-OD2	6.37	124.03	118.30
1	A	372	THR	N-CA-C	-6.04	94.70	111.00
1	A	371	GLY	N-CA-C	5.62	127.14	113.10
1	A	104	LYS	CD-CE-NZ	5.49	124.33	111.70

There are no chirality outliers.

There are no planarity outliers.

5.2 Too-close contacts [i](#)

In the following table, the Non-H and H(model) columns list the number of non-hydrogen atoms and hydrogen atoms in the chain respectively. The H(added) column lists the number of hydrogen atoms added and optimized by MolProbity. The Clashes column lists the number of clashes within the asymmetric unit, whereas Symm-Clashes lists symmetry-related clashes.

Mol	Chain	Non-H	H(model)	H(added)	Clashes	Symm-Clashes
1	A	3648	0	3512	139	0

Continued on next page...

Continued from previous page...

Mol	Chain	Non-H	H(model)	H(added)	Clashes	Symm-Clashes
1	B	3648	0	3512	110	0
2	A	16	0	17	17	0
2	B	16	0	17	6	0
3	A	168	0	0	3	1
3	B	172	0	0	3	0
All	All	7668	0	7058	251	1

The all-atom clashscore is defined as the number of clashes found per 1000 atoms (including hydrogen atoms). The all-atom clashscore for this structure is 17.

All (251) close contacts within the same asymmetric unit are listed below, sorted by their clash magnitude.

Atom-1	Atom-2	Interatomic distance (Å)	Clash overlap (Å)
2:A:901:ZXB:HAO	2:A:901:ZXB:HAH	1.16	1.12
2:B:902:ZXB:HAH	2:B:902:ZXB:CAO	1.75	1.11
1:A:16:ARG:HH11	1:B:16:ARG:HD2	1.10	1.10
2:B:902:ZXB:HAO	2:B:902:ZXB:CAH	1.75	1.09
1:A:16:ARG:NH1	1:B:16:ARG:HD2	1.68	1.09
1:A:399:GLU:HA	1:A:425:ASN:ND2	1.76	1.00
2:A:901:ZXB:HAH	2:A:901:ZXB:CAO	1.95	0.96
2:A:901:ZXB:HAG	3:A:578:HOH:O	1.65	0.96
1:A:297:GLY:H	1:A:300:HIS:HD2	1.14	0.94
1:A:381:ASN:H	1:A:381:ASN:HD22	1.15	0.93
1:A:34:HIS:HE2	2:A:901:ZXB:HOAA	1.15	0.88
2:B:902:ZXB:HAH	2:B:902:ZXB:HAO	0.89	0.88
1:A:217:LEU:HD11	1:A:246:HIS:HB2	1.55	0.87
1:A:431:PRO:HD2	1:A:434:LEU:HD12	1.57	0.86
1:A:254:ARG:HH12	1:A:266:GLU:HG3	1.44	0.82
1:A:266:GLU:OE2	2:A:901:ZXB:HAJ	1.79	0.82
2:A:901:ZXB:HAO	2:A:901:ZXB:CAH	2.05	0.82
1:B:297:GLY:H	1:B:300:HIS:HD2	1.28	0.80
1:A:16:ARG:HG2	1:B:260:TRP:CE2	2.18	0.79
1:B:179:ARG:HA	1:B:179:ARG:HH21	1.46	0.79
1:A:52:LYS:HG2	1:A:268:HIS:CD2	2.19	0.77
1:A:42:GLY:O	1:A:294:ARG:HG2	1.85	0.76
1:A:399:GLU:HA	1:A:425:ASN:HD22	1.46	0.76
1:B:16:ARG:HG3	1:B:16:ARG:HH11	1.52	0.74
1:A:54:PRO:HB2	1:A:56:ASP:OD2	1.86	0.74
1:A:61:GLN:HA	1:A:61:GLN:NE2	2.01	0.74
1:A:297:GLY:H	1:A:300:HIS:CD2	2.04	0.73
1:A:369:GLU:OE2	1:A:397:VAL:HG21	1.89	0.72

Continued on next page...

Continued from previous page...

Atom-1	Atom-2	Interatomic distance (Å)	Clash overlap (Å)
1:A:266:GLU:OE2	2:A:901:ZXB:CAJ	2.37	0.72
1:B:179:ARG:HA	1:B:179:ARG:NH2	2.06	0.71
1:B:106:ASP:CG	1:B:109:GLU:HG3	2.09	0.71
1:A:269:VAL:HG12	1:A:270:ASN:ND2	2.06	0.71
1:B:31:ILE:HG12	1:B:119:ALA:HB2	1.72	0.71
1:A:25:ASP:HA	1:A:279:LYS:HE2	1.73	0.70
1:A:61:GLN:HE22	1:A:78:PRO:HG2	1.55	0.70
1:A:381:ASN:H	1:A:381:ASN:ND2	1.87	0.70
1:B:409:ARG:NH1	1:B:414:GLY:O	2.24	0.69
1:A:16:ARG:HH11	1:B:16:ARG:CD	1.99	0.69
1:B:420:LYS:HE3	1:B:422:VAL:HG22	1.75	0.68
1:A:134:LEU:O	1:A:154:VAL:HG23	1.92	0.68
1:B:402:ASN:HA	1:B:421:ASN:OD1	1.93	0.68
1:B:22:LYS:O	1:B:26:LYS:HG3	1.93	0.68
1:A:49:GLU:HG2	1:A:267:TYR:CD2	2.29	0.67
1:A:405:ALA:HA	1:A:448:GLU:HA	1.78	0.66
1:A:350:LYS:HE2	1:A:351:TYR:CE2	2.30	0.66
1:A:290:PHE:HA	1:A:324:ASN:ND2	2.11	0.65
1:A:41:PRO:O	1:A:294:ARG:NH1	2.29	0.65
1:B:369:GLU:HA	1:B:399:GLU:OE2	1.95	0.65
1:A:302:LEU:HD22	1:A:306:GLN:HB3	1.79	0.65
1:A:49:GLU:HG2	1:A:267:TYR:HD2	1.60	0.64
1:A:346:GLU:HG3	1:A:349:ARG:HH21	1.62	0.64
1:A:125:THR:HA	1:A:171:TYR:HB3	1.78	0.64
1:A:422:VAL:HG11	1:A:427:GLU:OE2	1.98	0.64
1:B:137:THR:HG21	1:B:140:THR:HG22	1.80	0.63
1:A:64:TYR:CE2	2:A:901:ZXB:OAC	2.52	0.63
1:A:369:GLU:HB2	1:A:397:VAL:HB	1.81	0.63
1:B:424:LYS:HG3	1:B:425:ASN:OD1	1.99	0.63
1:A:159:LYS:O	1:A:163:GLU:HG2	1.99	0.63
1:B:16:ARG:HH11	1:B:16:ARG:CG	2.12	0.62
1:B:77:SER:O	1:B:78:PRO:C	2.37	0.62
1:B:91:PHE:CZ	1:B:95:LYS:HG2	2.35	0.62
1:B:405:ALA:HB1	1:B:447:VAL:O	2.01	0.61
1:A:61:GLN:HA	1:A:61:GLN:HE21	1.65	0.60
1:A:266:GLU:HG2	1:A:283:THR:CG2	2.31	0.60
1:A:263:LYS:HD3	1:A:278:TYR:CE1	2.36	0.60
1:A:266:GLU:OE1	2:A:901:ZXB:HAJA	2.02	0.60
1:B:125:THR:HA	1:B:171:TYR:HB3	1.83	0.60
1:A:422:VAL:HG12	1:A:422:VAL:O	2.02	0.59
1:B:251:VAL:HG13	1:B:255:TRP:HE1	1.67	0.59

Continued on next page...

Continued from previous page...

Atom-1	Atom-2	Interatomic distance (Å)	Clash overlap (Å)
1:A:108:GLN:HG2	3:A:529:HOH:O	2.02	0.59
1:B:31:ILE:HG12	1:B:119:ALA:CB	2.31	0.59
1:A:91:PHE:CE2	1:A:95:LYS:HB3	2.37	0.59
1:B:64:TYR:CE2	2:B:902:ZXB:OAC	2.55	0.59
1:B:53:VAL:HB	1:B:58:TRP:HE3	1.68	0.59
1:A:203:ASP:O	1:A:207:LYS:HG3	2.02	0.59
1:A:73:ARG:HB2	1:A:184:PRO:HB3	1.84	0.59
1:B:302:LEU:HD12	1:B:307:LEU:HD23	1.86	0.58
1:B:94:GLU:H	1:B:94:GLU:CD	2.05	0.58
1:A:405:ALA:HB1	1:A:447:VAL:O	2.04	0.58
1:B:209:VAL:O	1:B:213:VAL:HG23	2.03	0.57
1:B:161:VAL:HG13	1:B:166:LEU:HB2	1.85	0.57
1:A:142:PHE:CE2	1:A:179:ARG:HD2	2.40	0.57
1:B:408:VAL:HG11	1:B:428:ILE:HD13	1.87	0.56
1:B:94:GLU:OE2	1:B:94:GLU:N	2.32	0.56
1:A:373:GLU:CB	1:A:388:LEU:HD12	2.36	0.56
1:B:227:TRP:CG	1:B:228:PRO:HD2	2.41	0.56
1:A:254:ARG:NH1	1:A:266:GLU:HG3	2.16	0.56
1:B:7:ARG:HD3	3:B:473:HOH:O	2.06	0.56
1:B:64:TYR:HE2	2:B:902:ZXB:OAC	1.88	0.56
2:B:902:ZXB:CAO	2:B:902:ZXB:CAH	2.51	0.55
1:A:91:PHE:C	1:A:91:PHE:CD2	2.80	0.55
1:A:266:GLU:CD	2:A:901:ZXB:HNAK	2.10	0.55
1:A:402:ASN:ND2	1:A:421:ASN:HB3	2.22	0.55
1:A:161:VAL:HG13	1:A:166:LEU:HB2	1.87	0.54
1:A:311:LEU:HD12	1:A:315:VAL:HG23	1.90	0.54
1:A:266:GLU:O	1:A:267:TYR:C	2.45	0.54
1:B:134:LEU:O	1:B:154:VAL:HG23	2.07	0.54
1:B:53:VAL:HB	1:B:58:TRP:CE3	2.42	0.54
1:B:401:LEU:C	1:B:402:ASN:HD22	2.10	0.54
1:B:34:HIS:CD2	1:B:290:PHE:HB3	2.43	0.54
1:B:52:LYS:HG2	1:B:268:HIS:CD2	2.43	0.54
1:B:35:TRP:O	1:B:134:LEU:HD11	2.08	0.53
1:B:251:VAL:HG13	1:B:255:TRP:NE1	2.24	0.53
1:A:16:ARG:CG	1:B:260:TRP:CE2	2.90	0.53
1:A:175:GLY:HA3	1:A:225:MET:O	2.08	0.53
1:B:217:LEU:HD11	1:B:246:HIS:HB2	1.90	0.53
1:B:422:VAL:HG21	1:B:427:GLU:CD	2.29	0.53
1:A:66:GLU:OE1	2:A:901:ZXB:OAB	2.27	0.53
1:B:124:PRO:HD2	1:B:169:GLY:O	2.09	0.53
1:B:409:ARG:HG2	1:B:409:ARG:HH11	1.74	0.53

Continued on next page...

Continued from previous page...

Atom-1	Atom-2	Interatomic distance (Å)	Clash overlap (Å)
1:A:221:LEU:HB2	1:A:251:VAL:HG22	1.91	0.52
1:A:405:ALA:CB	1:A:448:GLU:HA	2.39	0.52
1:A:373:GLU:HB2	1:A:388:LEU:HD12	1.92	0.52
1:A:403:LEU:HG	1:A:426:LEU:HD22	1.90	0.52
2:A:901:ZXB:CAO	2:A:901:ZXB:CAH	2.70	0.52
1:A:104:LYS:HG3	1:A:330:ASP:HB2	1.92	0.52
1:B:106:ASP:OD1	1:B:109:GLU:N	2.38	0.52
1:A:48:GLY:O	1:A:288:LEU:HD22	2.10	0.52
1:B:127:LYS:HD2	1:B:131:GLY:HA2	1.92	0.51
1:B:127:LYS:HE2	1:B:172:TYR:CZ	2.46	0.51
1:B:409:ARG:NH1	1:B:409:ARG:HG2	2.24	0.51
1:A:134:LEU:HD23	1:A:134:LEU:N	2.26	0.51
1:A:155:GLY:O	1:A:159:LYS:HG3	2.11	0.50
1:B:422:VAL:HG21	1:B:427:GLU:OE2	2.11	0.50
1:A:171:TYR:C	1:A:171:TYR:CD2	2.85	0.50
1:A:405:ALA:CA	1:A:448:GLU:HA	2.41	0.50
1:B:290:PHE:HA	1:B:324:ASN:ND2	2.27	0.50
1:A:53:VAL:HB	1:A:58:TRP:HE3	1.76	0.50
1:A:233:GLU:OE1	1:A:236:LYS:HE3	2.12	0.50
1:B:34:HIS:CG	1:B:290:PHE:HB3	2.47	0.50
1:A:35:TRP:CD1	1:A:327:PRO:HB2	2.48	0.49
1:A:91:PHE:C	1:A:91:PHE:HD2	2.16	0.49
1:A:397:VAL:HG13	1:A:427:GLU:HG2	1.94	0.49
1:A:385:VAL:HB	1:A:444:LEU:HB2	1.94	0.49
1:A:34:HIS:NE2	2:A:901:ZXB:OAA	2.21	0.49
1:B:199:TYR:CZ	1:B:230:LYS:HE2	2.48	0.49
1:B:238:LEU:HD23	1:B:238:LEU:C	2.33	0.49
1:A:254:ARG:HH12	1:A:266:GLU:CG	2.22	0.49
1:B:90:ASN:O	1:B:90:ASN:ND2	2.34	0.48
1:B:432:LYS:O	1:B:436:GLU:HG2	2.13	0.48
1:A:378:ARG:NH1	1:A:378:ARG:HG2	2.28	0.48
1:A:34:HIS:CD2	2:A:901:ZXB:HOAA	2.28	0.48
1:A:290:PHE:HA	1:A:324:ASN:HD21	1.77	0.48
1:A:378:ARG:HG2	1:A:378:ARG:HH11	1.79	0.48
1:B:369:GLU:OE1	1:B:397:VAL:HG21	2.13	0.47
1:B:439:SER:O	1:B:441:THR:N	2.44	0.47
1:A:432:LYS:HE3	1:A:436:GLU:OE2	2.14	0.47
1:A:409:ARG:HG2	1:A:414:GLY:O	2.14	0.47
1:A:274:ASP:CG	1:A:275:LEU:H	2.18	0.47
1:B:177:ASP:OD1	1:B:179:ARG:HB2	2.15	0.47
1:A:137:THR:HG21	1:A:140:THR:HG22	1.97	0.47

Continued on next page...

Continued from previous page...

Atom-1	Atom-2	Interatomic distance (Å)	Clash overlap (Å)
1:A:61:GLN:HE21	1:A:61:GLN:CA	2.23	0.47
1:B:37:ILE:HD11	1:B:93:TYR:CE2	2.50	0.47
1:A:217:LEU:HD11	1:A:246:HIS:CB	2.36	0.47
1:A:286:ILE:CG2	1:A:301:MET:HE3	2.44	0.47
1:B:235:LEU:HD12	1:B:257:VAL:HG11	1.96	0.47
1:B:274:ASP:O	1:B:276:PRO:HD3	2.15	0.47
1:B:405:ALA:HA	1:B:448:GLU:HA	1.97	0.46
1:A:267:TYR:O	1:A:282:PHE:HE1	1.98	0.46
1:B:63:PRO:O	1:B:289:SER:HB2	2.15	0.46
1:B:409:ARG:HH11	1:B:409:ARG:CG	2.28	0.46
1:B:171:TYR:CD2	1:B:171:TYR:C	2.89	0.46
1:B:382:ARG:NE	1:B:445:GLU:OE1	2.49	0.46
1:A:148:GLY:HA3	1:A:149:PRO:HD3	1.72	0.46
1:A:398:ILE:HG21	1:A:401:LEU:HD23	1.98	0.46
1:B:431:PRO:O	1:B:434:LEU:N	2.45	0.46
1:B:379:LYS:HB2	1:B:384:PHE:HE1	1.81	0.46
1:A:90:ASN:HB2	3:A:513:HOH:O	2.14	0.46
1:A:265:ALA:HA	1:A:270:ASN:HB2	1.96	0.46
1:A:405:ALA:HB2	1:A:448:GLU:HB3	1.98	0.46
1:B:430:VAL:HG11	1:B:435:LEU:HD23	1.97	0.46
1:B:106:ASP:OD1	1:B:109:GLU:HG3	2.16	0.45
1:B:369:GLU:HB2	1:B:397:VAL:HB	1.98	0.45
1:A:348:LEU:O	1:A:352:GLY:N	2.47	0.45
1:B:429:THR:O	1:B:431:PRO:HD3	2.16	0.45
1:A:16:ARG:CG	1:B:260:TRP:CZ2	3.00	0.45
1:A:64:TYR:HE2	2:A:901:ZXB:OAC	1.98	0.45
1:A:209:VAL:CG1	1:A:238:LEU:HD11	2.47	0.45
1:B:391:PRO:HD2	1:B:442:LEU:HD22	1.99	0.45
1:A:335:ASP:OD1	1:A:335:ASP:N	2.48	0.44
1:B:148:GLY:HA3	1:B:149:PRO:HD3	1.75	0.44
1:A:292:TYR:CZ	1:A:328:LYS:HE2	2.52	0.44
1:B:203:ASP:O	1:B:207:LYS:HG3	2.18	0.44
1:A:97:ALA:O	1:A:148:GLY:CA	2.65	0.44
1:B:41:PRO:O	1:B:294:ARG:NH1	2.50	0.44
1:A:101:THR:OG1	1:A:103:GLU:HG2	2.17	0.44
1:B:158:ALA:HB2	1:B:168:PHE:CE2	2.53	0.44
1:A:25:ASP:O	1:A:28:LYS:HE2	2.18	0.44
1:A:439:SER:O	1:A:441:THR:N	2.44	0.44
1:A:77:SER:O	1:A:78:PRO:C	2.56	0.43
1:A:142:PHE:CD2	1:A:179:ARG:HD2	2.53	0.43
1:A:286:ILE:HG22	1:A:301:MET:HE3	1.99	0.43

Continued on next page...

Continued from previous page...

Atom-1	Atom-2	Interatomic distance (Å)	Clash overlap (Å)
1:A:383:ILE:HD11	1:A:448:GLU:OE1	2.17	0.43
1:A:298:PRO:HA	1:A:301:MET:HG3	2.00	0.43
1:A:420:LYS:HG3	1:A:422:VAL:HG23	2.01	0.43
1:B:60:PHE:O	1:B:78:PRO:HD2	2.17	0.43
1:B:430:VAL:HG11	1:B:435:LEU:CD2	2.48	0.43
1:A:403:LEU:HD23	1:A:403:LEU:HA	1.85	0.43
1:B:45:THR:O	1:B:63:PRO:HA	2.17	0.43
1:A:233:GLU:OE1	1:A:236:LYS:CE	2.67	0.43
1:B:230:LYS:HG3	3:B:577:HOH:O	2.18	0.43
1:B:304:VAL:O	1:B:308:VAL:HG23	2.19	0.43
1:B:199:TYR:CE1	1:B:230:LYS:HE2	2.53	0.43
1:B:263:LYS:HD3	1:B:278:TYR:CE1	2.53	0.43
1:A:121:TYR:HB3	1:A:167:ARG:HB2	2.00	0.43
1:A:351:TYR:O	1:A:352:GLY:C	2.57	0.43
1:B:117:ALA:HB2	1:B:341:LEU:HB3	2.00	0.43
1:B:92:GLU:O	1:B:95:LYS:HB3	2.19	0.43
1:A:149:PRO:O	1:A:150:LYS:HB2	2.19	0.43
1:A:224:ASP:OD1	2:A:901:ZXB:HAI	2.19	0.43
1:A:401:LEU:HD12	1:A:402:ASN:N	2.34	0.43
1:B:36:GLY:O	1:B:39:SER:HB2	2.19	0.43
1:B:377:THR:OG1	1:B:384:PHE:HB2	2.19	0.42
1:A:302:LEU:HA	1:A:302:LEU:HD23	1.68	0.42
1:A:106:ASP:OD1	1:A:106:ASP:C	2.58	0.42
1:A:431:PRO:HD2	1:A:434:LEU:CD1	2.40	0.42
1:A:266:GLU:CD	2:A:901:ZXB:HAJA	2.40	0.42
1:B:103:GLU:HB3	3:B:540:HOH:O	2.19	0.42
1:B:120:LYS:HA	1:B:166:LEU:HD22	2.01	0.42
1:A:23:TRP:CD2	1:A:24:PHE:N	2.88	0.42
1:A:134:LEU:HD13	1:A:153:LEU:HD12	2.02	0.42
1:B:389:GLY:HA2	1:B:440:ILE:O	2.20	0.42
1:B:233:GLU:OE1	1:B:236:LYS:HE3	2.20	0.42
1:A:97:ALA:O	1:A:148:GLY:N	2.53	0.42
1:A:378:ARG:NH1	1:A:380:CYS:H	2.17	0.41
1:A:373:GLU:HB3	1:A:388:LEU:HD12	2.02	0.41
1:A:23:TRP:CE3	1:A:167:ARG:HG3	2.55	0.41
1:B:95:LYS:HB2	1:B:95:LYS:HE3	1.86	0.41
1:B:257:VAL:HB	1:B:258:PRO:HD2	2.02	0.41
1:A:110:TRP:HB3	1:A:114:PHE:CE1	2.55	0.41
1:B:128:HIS:CE1	1:B:129:HIS:CD2	3.08	0.41
1:A:227:TRP:CG	1:A:228:PRO:HD2	2.56	0.41
1:B:20:VAL:HA	1:B:21:PRO:HD3	1.88	0.41

Continued on next page...

Continued from previous page...

Atom-1	Atom-2	Interatomic distance (Å)	Clash overlap (Å)
1:B:221:LEU:HB2	1:B:251:VAL:HG22	2.03	0.41
1:B:253:ASP:CG	1:B:263:LYS:HA	2.41	0.41
1:B:387:PHE:HB2	1:B:442:LEU:HB3	2.02	0.41
1:A:120:LYS:C	1:A:166:LEU:HD22	2.41	0.41
1:B:361:TRP:CG	1:B:362:GLU:N	2.88	0.41
1:A:16:ARG:HG2	1:B:260:TRP:NE1	2.36	0.41
1:A:420:LYS:HE3	1:A:422:VAL:CG2	2.51	0.41
1:B:40:VAL:O	1:B:41:PRO:C	2.53	0.41
1:B:92:GLU:HB3	1:B:94:GLU:OE2	2.21	0.41
1:A:302:LEU:O	1:A:340:ARG:HD3	2.21	0.41
1:B:413:THR:HG21	1:B:434:LEU:CD2	2.51	0.41
1:A:41:PRO:O	1:A:42:GLY:C	2.59	0.40
1:B:80:TRP:O	1:B:84:VAL:HG23	2.21	0.40
1:B:92:GLU:CB	1:B:94:GLU:OE2	2.70	0.40
1:A:37:ILE:HD11	1:A:93:TYR:CE2	2.56	0.40
1:A:140:THR:O	1:A:143:ASN:ND2	2.53	0.40
1:A:32:PHE:HB3	1:A:324:ASN:HA	2.04	0.40
1:A:378:ARG:HH11	1:A:378:ARG:CG	2.33	0.40

All (1) symmetry-related close contacts are listed below. The label for Atom-2 includes the symmetry operator and encoded unit-cell translations to be applied.

Atom-1	Atom-2	Interatomic distance (Å)	Clash overlap (Å)
3:A:619:HOH:O	3:A:619:HOH:O[2_555]	1.69	0.51

5.3 Torsion angles [i](#)

5.3.1 Protein backbone [i](#)

In the following table, the Percentiles column shows the percent Ramachandran outliers of the chain as a percentile score with respect to all X-ray entries followed by that with respect to entries of similar resolution.

The Analysed column shows the number of residues for which the backbone conformation was analysed, and the total number of residues.

Mol	Chain	Analysed	Favoured	Allowed	Outliers	Percentiles	
1	A	440/455 (97%)	408 (93%)	29 (7%)	3 (1%)	22	41
1	B	440/455 (97%)	410 (93%)	28 (6%)	2 (0%)	29	50

Continued on next page...

Continued from previous page...

Mol	Chain	Analysed	Favoured	Allowed	Outliers	Percentiles	
All	All	880/910 (97%)	818 (93%)	57 (6%)	5 (1%)	25	45

All (5) Ramachandran outliers are listed below:

Mol	Chain	Res	Type
1	B	148	GLY
1	A	148	GLY
1	A	440	ILE
1	A	267	TYR
1	B	440	ILE

5.3.2 Protein sidechains [i](#)

In the following table, the Percentiles column shows the percent sidechain outliers of the chain as a percentile score with respect to all X-ray entries followed by that with respect to entries of similar resolution.

The Analysed column shows the number of residues for which the sidechain conformation was analysed, and the total number of residues.

Mol	Chain	Analysed	Rotameric	Outliers	Percentiles	
1	A	382/395 (97%)	366 (96%)	16 (4%)	30	53
1	B	382/395 (97%)	364 (95%)	18 (5%)	26	49
All	All	764/790 (97%)	730 (96%)	34 (4%)	27	50

All (34) residues with a non-rotameric sidechain are listed below:

Mol	Chain	Res	Type
1	A	19	THR
1	A	32	PHE
1	A	56	ASP
1	A	66	GLU
1	A	76	GLU
1	A	91	PHE
1	A	92	GLU
1	A	134	LEU
1	A	299	GLU
1	A	301	MET
1	A	335	ASP
1	A	372	THR
1	A	381	ASN

Continued on next page...

Continued from previous page...

Mol	Chain	Res	Type
1	A	395	LYS
1	A	397	VAL
1	A	407	THR
1	B	16	ARG
1	B	26	LYS
1	B	32	PHE
1	B	66	GLU
1	B	75	LYS
1	B	76	GLU
1	B	90	ASN
1	B	124	PRO
1	B	179	ARG
1	B	222	TRP
1	B	294	ARG
1	B	299	GLU
1	B	339	GLU
1	B	372	THR
1	B	409	ARG
1	B	416	ARG
1	B	418	SER
1	B	437	THR

Sometimes sidechains can be flipped to improve hydrogen bonding and reduce clashes. All (10) such sidechains are listed below:

Mol	Chain	Res	Type
1	A	61	GLN
1	A	90	ASN
1	A	108	GLN
1	A	270	ASN
1	A	300	HIS
1	A	324	ASN
1	A	381	ASN
1	A	402	ASN
1	B	300	HIS
1	B	402	ASN

5.3.3 RNA [i](#)

There are no RNA molecules in this entry.

5.4 Non-standard residues in protein, DNA, RNA chains [i](#)

There are no non-standard protein/DNA/RNA residues in this entry.

5.5 Carbohydrates [i](#)

There are no monosaccharides in this entry.

5.6 Ligand geometry [i](#)

2 ligands are modelled in this entry.

In the following table, the Counts columns list the number of bonds (or angles) for which Mogul statistics could be retrieved, the number of bonds (or angles) that are observed in the model and the number of bonds (or angles) that are defined in the Chemical Component Dictionary. The Link column lists molecule types, if any, to which the group is linked. The Z score for a bond length (or angle) is the number of standard deviations the observed value is removed from the expected value. A bond length (or angle) with $|Z| > 2$ is considered an outlier worth inspection. RMSZ is the root-mean-square of all Z scores of the bond lengths (or angles).

Mol	Type	Chain	Res	Link	Bond lengths			Bond angles		
					Counts	RMSZ	# Z > 2	Counts	RMSZ	# Z > 2
2	ZXB	B	902	-	17,17,17	0.60	0	20,23,23	1.75	6 (30%)
2	ZXB	A	901	-	17,17,17	0.57	0	20,23,23	1.33	2 (10%)

In the following table, the Chirals column lists the number of chiral outliers, the number of chiral centers analysed, the number of these observed in the model and the number defined in the Chemical Component Dictionary. Similar counts are reported in the Torsion and Rings columns. '-' means no outliers of that kind were identified.

Mol	Type	Chain	Res	Link	Chirals	Torsions	Rings
2	ZXB	B	902	-	-	4/4/21/21	0/2/2/2
2	ZXB	A	901	-	-	3/4/21/21	0/2/2/2

There are no bond length outliers.

All (8) bond angle outliers are listed below:

Mol	Chain	Res	Type	Atoms	Z	Observed(°)	Ideal(°)
2	B	902	ZXB	OAA-CAM-CAN	-4.55	101.02	110.14
2	A	901	ZXB	OAB-CAN-CAM	-3.53	103.23	109.99
2	B	902	ZXB	CAM-CAN-CAO	-3.41	104.99	110.89
2	B	902	ZXB	CAO-CAP-NAK	-2.51	104.10	109.14

Continued on next page...

Continued from previous page...

Mol	Chain	Res	Type	Atoms	Z	Observed(°)	Ideal(°)
2	B	902	ZXB	OAC-CAO-CAN	-2.50	104.57	110.35
2	A	901	ZXB	OAA-CAM-CAN	-2.44	105.25	110.14
2	B	902	ZXB	OAB-CAN-CAM	-2.24	105.70	109.99
2	B	902	ZXB	OAC-CAO-CAP	-2.12	105.09	109.47

There are no chirality outliers.

All (7) torsion outliers are listed below:

Mol	Chain	Res	Type	Atoms
2	B	902	ZXB	CAL-CAJ-CAP-NAK
2	B	902	ZXB	CAP-CAJ-CAL-CAG
2	A	901	ZXB	CAP-CAJ-CAL-CAG
2	B	902	ZXB	CAP-CAJ-CAL-CAH
2	A	901	ZXB	CAP-CAJ-CAL-CAH
2	B	902	ZXB	CAL-CAJ-CAP-CAO
2	A	901	ZXB	CAL-CAJ-CAP-NAK

There are no ring outliers.

2 monomers are involved in 23 short contacts:

Mol	Chain	Res	Type	Clashes	Symm-Clashes
2	B	902	ZXB	6	0
2	A	901	ZXB	17	0

5.7 Other polymers [i](#)

There are no such residues in this entry.

5.8 Polymer linkage issues [i](#)

There are no chain breaks in this entry.

6 Fit of model and data

6.1 Protein, DNA and RNA chains

In the following table, the column labelled ‘#RSRZ > 2’ contains the number (and percentage) of RSRZ outliers, followed by percent RSRZ outliers for the chain as percentile scores relative to all X-ray entries and entries of similar resolution. The OWAB column contains the minimum, median, 95th percentile and maximum values of the occupancy-weighted average B-factor per residue. The column labelled ‘Q < 0.9’ lists the number of (and percentage) of residues with an average occupancy less than 0.9.

Mol	Chain	Analysed	<RSRZ>	#RSRZ>2	OWAB(Å ²)	Q<0.9
1	A	442/455 (97%)	-0.34	16 (3%) 42 36	22, 41, 73, 85	0
1	B	442/455 (97%)	-0.29	10 (2%) 60 55	23, 42, 74, 83	0
All	All	884/910 (97%)	-0.31	26 (2%) 51 45	22, 42, 74, 85	0

All (26) RSRZ outliers are listed below:

Mol	Chain	Res	Type	RSRZ
1	A	270	ASN	4.0
1	A	54	PRO	3.9
1	A	53	VAL	3.7
1	A	448	GLU	3.1
1	A	48	GLY	3.1
1	B	171	TYR	2.9
1	B	405	ALA	2.8
1	A	55	MET	2.6
1	B	403	LEU	2.5
1	B	448	GLU	2.5
1	A	404	SER	2.5
1	A	268	HIS	2.4
1	A	405	ALA	2.3
1	B	422	VAL	2.3
1	B	125	THR	2.3
1	A	406	GLY	2.3
1	B	54	PRO	2.2
1	B	128	HIS	2.2
1	A	47	THR	2.2
1	A	34	HIS	2.1
1	A	51	GLY	2.1
1	B	56	ASP	2.1
1	A	56	ASP	2.1
1	B	404	SER	2.1

Continued on next page...

Continued from previous page...

Mol	Chain	Res	Type	RSRZ
1	A	125	THR	2.0
1	A	171	TYR	2.0

6.2 Non-standard residues in protein, DNA, RNA chains [i](#)

There are no non-standard protein/DNA/RNA residues in this entry.

6.3 Carbohydrates [i](#)

There are no monosaccharides in this entry.

6.4 Ligands [i](#)

In the following table, the Atoms column lists the number of modelled atoms in the group and the number defined in the chemical component dictionary. The B-factors column lists the minimum, median, 95th percentile and maximum values of B factors of atoms in the group. The column labelled 'Q < 0.9' lists the number of atoms with occupancy less than 0.9.

Mol	Type	Chain	Res	Atoms	RSCC	RSR	B-factors(Å ²)	Q < 0.9
2	ZXB	A	901	16/16	0.50	0.49	77,83,87,87	0
2	ZXB	B	902	16/16	0.75	0.45	77,83,84,85	0

6.5 Other polymers [i](#)

There are no such residues in this entry.