



# Full wwPDB X-ray Structure Validation Report ⓘ

Jun 12, 2024 – 05:34 PM EDT

PDB ID : 2ZBT  
Title : Crystal structure of pyridoxine biosynthesis protein from *Thermus thermophilus* HB8  
Authors : Manzoku, M.; Ebihara, A.; Fujimoto, Y.; Yokoyama, S.; Kuramitsu, S.; RIKEN Structural Genomics/Proteomics Initiative (RSGI)  
Deposited on : 2007-10-29  
Resolution : 1.65 Å(reported)

This is a Full wwPDB X-ray Structure Validation Report for a publicly released PDB entry.

We welcome your comments at [validation@mail.wwpdb.org](mailto:validation@mail.wwpdb.org)

A user guide is available at

<https://www.wwpdb.org/validation/2017/XrayValidationReportHelp>

with specific help available everywhere you see the ⓘ symbol.

The types of validation reports are described at

<http://www.wwpdb.org/validation/2017/FAQs#types>.

---

The following versions of software and data (see [references ⓘ](#)) were used in the production of this report:

MolProbity : 4.02b-467  
Mogul : 2022.3.0, CSD as543be (2022)  
Xtriage (Phenix) : 1.20.1  
EDS : 2.36.2  
Percentile statistics : 20191225.v01 (using entries in the PDB archive December 25th 2019)  
Refmac : 5.8.0158  
CCP4 : 7.0.044 (Gargrove)  
Ideal geometry (proteins) : Engh & Huber (2001)  
Ideal geometry (DNA, RNA) : Parkinson et al. (1996)  
Validation Pipeline (wwPDB-VP) : 2.36.2

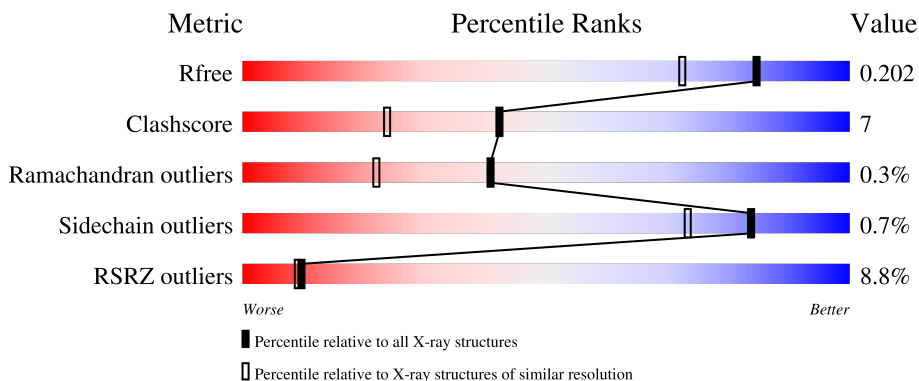
# 1 Overall quality at a glance

The following experimental techniques were used to determine the structure:

*X-RAY DIFFRACTION*

The reported resolution of this entry is 1.65 Å.

Percentile scores (ranging between 0-100) for global validation metrics of the entry are shown in the following graphic. The table shows the number of entries on which the scores are based.



Metric	Whole archive (#Entries)	Similar resolution (#Entries, resolution range(Å))
$R_{free}$	130704	1827 (1.66-1.66)
Clashscore	141614	1931 (1.66-1.66)
Ramachandran outliers	138981	1891 (1.66-1.66)
Sidechain outliers	138945	1891 (1.66-1.66)
RSRZ outliers	127900	1791 (1.66-1.66)

The table below summarises the geometric issues observed across the polymeric chains and their fit to the electron density. The red, orange, yellow and green segments of the lower bar indicate the fraction of residues that contain outliers for  $\geq 3$ , 2, 1 and 0 types of geometric quality criteria respectively. A grey segment represents the fraction of residues that are not modelled. The numeric value for each fraction is indicated below the corresponding segment, with a dot representing fractions  $\leq 5\%$ . The upper red bar (where present) indicates the fraction of residues that have poor fit to the electron density. The numeric value is given above the bar.

Mol	Chain	Length	Quality of chain
1	A	297	
1	B	297	
1	C	297	
1	D	297	

## 2 Entry composition [i](#)

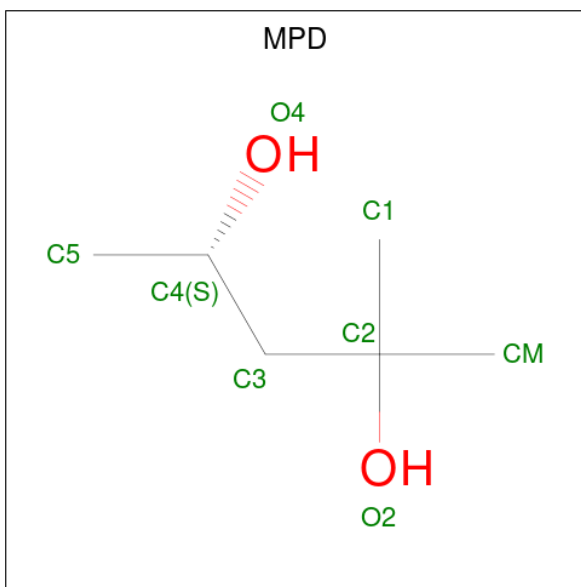
There are 3 unique types of molecules in this entry. The entry contains 8972 atoms, of which 0 are hydrogens and 0 are deuteriums.

In the tables below, the ZeroOcc column contains the number of atoms modelled with zero occupancy, the AltConf column contains the number of residues with at least one atom in alternate conformation and the Trace column contains the number of residues modelled with at most 2 atoms.

- Molecule 1 is a protein called Pyridoxal biosynthesis lyase pdxS.

Mol	Chain	Residues	Atoms					ZeroOcc	AltConf	Trace
			Total	C	N	O	S			
1	A	276	Total 2095	C 1327	N 369	O 383	S 16	0	0	0
1	B	274	Total 2083	C 1320	N 366	O 381	S 16	0	0	0
1	C	270	Total 2057	C 1305	N 362	O 375	S 15	0	0	0
1	D	274	Total 2083	C 1320	N 366	O 381	S 16	0	0	0

- Molecule 2 is (4S)-2-METHYL-2,4-PENTANEDIOL (three-letter code: MPD) (formula: C<sub>6</sub>H<sub>14</sub>O<sub>2</sub>).



Mol	Chain	Residues	Atoms		ZeroOcc	AltConf
			Total	C O		
2	A	1	Total 8	C O 6 2	0	0
2	B	1	Total 8	C O 6 2	0	0

*Continued on next page...*

*Continued from previous page...*

Mol	Chain	Residues	Atoms			ZeroOcc	AltConf
2	C	1	Total	C	O	0	0
			8	6	2		
2	D	1	Total	C	O	0	0
			8	6	2		

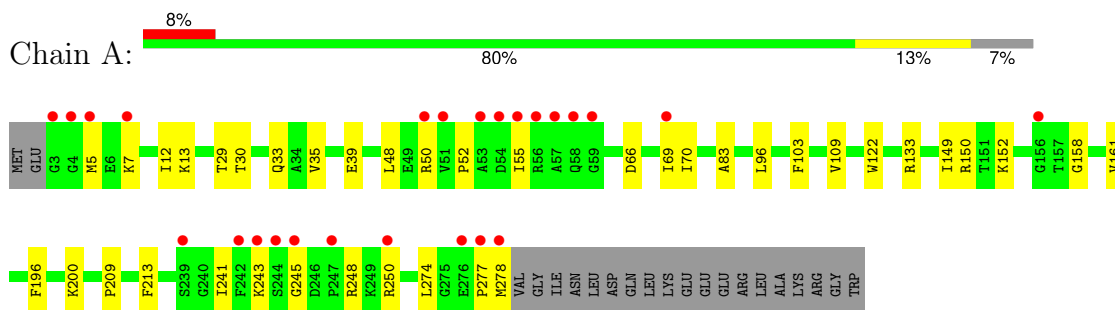
- Molecule 3 is water.

Mol	Chain	Residues	Atoms		ZeroOcc	AltConf
3	A	173	Total	O	0	0
			173	173		
3	B	171	Total	O	0	0
			171	171		
3	C	143	Total	O	0	0
			143	143		
3	D	135	Total	O	0	0
			135	135		

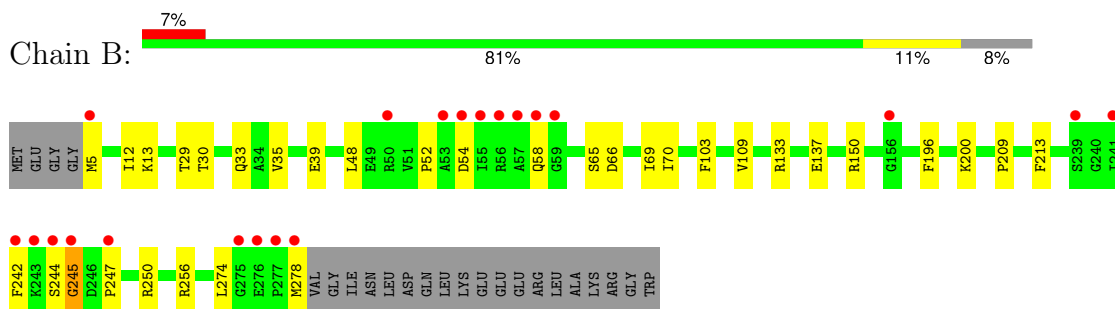
### 3 Residue-property plots [i](#)

These plots are drawn for all protein, RNA, DNA and oligosaccharide chains in the entry. The first graphic for a chain summarises the proportions of the various outlier classes displayed in the second graphic. The second graphic shows the sequence view annotated by issues in geometry and electron density. Residues are color-coded according to the number of geometric quality criteria for which they contain at least one outlier: green = 0, yellow = 1, orange = 2 and red = 3 or more. A red dot above a residue indicates a poor fit to the electron density ( $RSRZ > 2$ ). Stretches of 2 or more consecutive residues without any outlier are shown as a green connector. Residues present in the sample, but not in the model, are shown in grey.

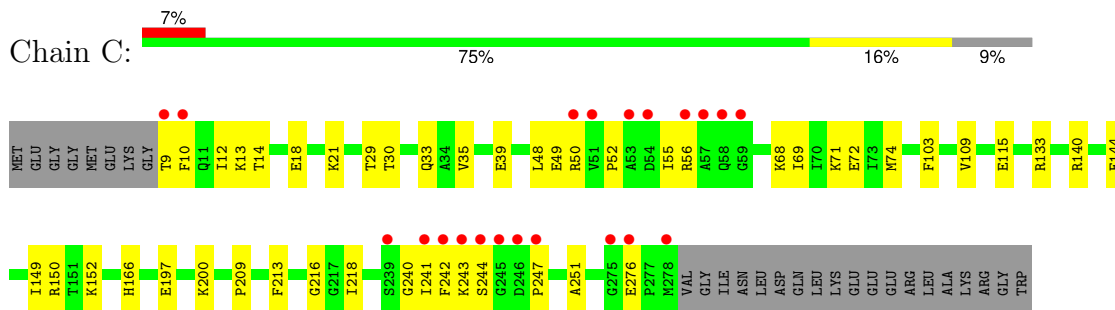
- Molecule 1: Pyridoxal biosynthesis lyase pdxS



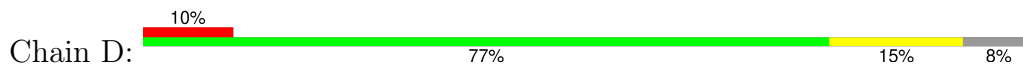
- Molecule 1: Pyridoxal biosynthesis lyase pdxS

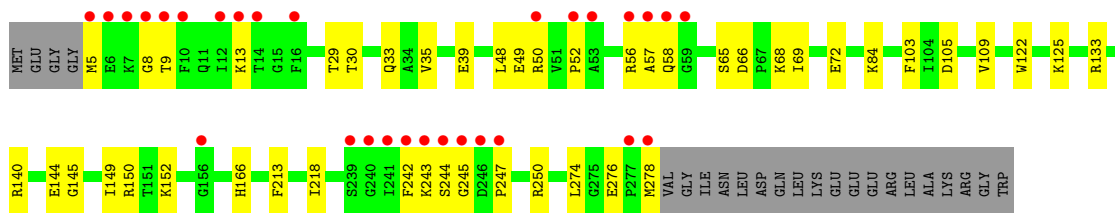


- Molecule 1: Pyridoxal biosynthesis lyase pdxS



- Molecule 1: Pyridoxal biosynthesis lyase pdxS





## 4 Data and refinement statistics i

Property	Value	Source
Space group	H 3	Depositor
Cell constants a, b, c, $\alpha$ , $\beta$ , $\gamma$	180.97Å 180.97Å 100.75Å 90.00° 90.00° 120.00°	Depositor
Resolution (Å)	47.96 – 1.65 47.96 – 1.65	Depositor EDS
% Data completeness (in resolution range)	99.8 (47.96-1.65) 100.0 (47.96-1.65)	Depositor EDS
$R_{merge}$	0.04	Depositor
$R_{sym}$	(Not available)	Depositor
$\langle I/\sigma(I) \rangle$ <sup>1</sup>	5.34 (at 1.65Å)	Xtrriage
Refinement program	CNS 1.1	Depositor
R, $R_{free}$	0.194 , 0.210 0.188 , 0.202	Depositor DCC
$R_{free}$ test set	14786 reflections (9.99%)	wwPDB-VP
Wilson B-factor (Å <sup>2</sup> )	17.1	Xtrriage
Anisotropy	0.080	Xtrriage
Bulk solvent $k_{sol}$ (e/Å <sup>3</sup> ), $B_{sol}$ (Å <sup>2</sup> )	0.37 , 43.1	EDS
L-test for twinning <sup>2</sup>	$\langle  L  \rangle = 0.51$ , $\langle L^2 \rangle = 0.34$	Xtrriage
Estimated twinning fraction	0.010 for h,-h-k,-l	Xtrriage
$F_o, F_c$ correlation	0.95	EDS
Total number of atoms	8972	wwPDB-VP
Average B, all atoms (Å <sup>2</sup> )	21.0	wwPDB-VP

Xtrriage's analysis on translational NCS is as follows: *The largest off-origin peak in the Patterson function is 4.53% of the height of the origin peak. No significant pseudotranslation is detected.*

<sup>1</sup>Intensities estimated from amplitudes.

<sup>2</sup>Theoretical values of  $\langle |L| \rangle$ ,  $\langle L^2 \rangle$  for acentric reflections are 0.5, 0.333 respectively for untwinned datasets, and 0.375, 0.2 for perfectly twinned datasets.

## 5 Model quality [i](#)

### 5.1 Standard geometry [i](#)

Bond lengths and bond angles in the following residue types are not validated in this section: MPD

The Z score for a bond length (or angle) is the number of standard deviations the observed value is removed from the expected value. A bond length (or angle) with  $|Z| > 5$  is considered an outlier worth inspection. RMSZ is the root-mean-square of all Z scores of the bond lengths (or angles).

Mol	Chain	Bond lengths		Bond angles	
		RMSZ	# Z  >5	RMSZ	# Z  >5
1	A	0.29	0/2134	0.58	0/2879
1	B	0.28	0/2122	0.58	0/2865
1	C	0.28	0/2096	0.58	0/2831
1	D	0.28	0/2122	0.57	0/2865
All	All	0.28	0/8474	0.58	0/11440

There are no bond length outliers.

There are no bond angle outliers.

There are no chirality outliers.

There are no planarity outliers.

### 5.2 Too-close contacts [i](#)

In the following table, the Non-H and H(model) columns list the number of non-hydrogen atoms and hydrogen atoms in the chain respectively. The H(added) column lists the number of hydrogen atoms added and optimized by MolProbity. The Clashes column lists the number of clashes within the asymmetric unit, whereas Symm-Clashes lists symmetry-related clashes.

Mol	Chain	Non-H	H(model)	H(added)	Clashes	Symm-Clashes
1	A	2095	0	2112	28	0
1	B	2083	0	2095	24	0
1	C	2057	0	2075	38	0
1	D	2083	0	2095	35	0
2	A	8	0	14	0	0
2	B	8	0	13	0	0
2	C	8	0	14	1	0
2	D	8	0	14	0	0
3	A	173	0	0	0	0

*Continued on next page...*



*Continued from previous page...*

Mol	Chain	Non-H	H(model)	H(added)	Clashes	Symm-Clashes
3	B	171	0	0	0	0
3	C	143	0	0	0	0
3	D	135	0	0	1	0
All	All	8972	0	8432	116	0

The all-atom clashscore is defined as the number of clashes found per 1000 atoms (including hydrogen atoms). The all-atom clashscore for this structure is 7.

All (116) close contacts within the same asymmetric unit are listed below, sorted by their clash magnitude.

Atom-1	Atom-2	Interatomic distance (Å)	Clash overlap (Å)
1:D:242:PHE:HA	1:D:247:PRO:HB3	1.47	0.95
1:C:13:LYS:HA	1:D:5:MET:HG3	1.50	0.91
1:C:133:ARG:NH2	1:C:133:ARG:HB2	2.03	0.73
1:B:242:PHE:HA	1:B:247:PRO:HB3	1.73	0.71
1:D:133:ARG:HH11	1:D:133:ARG:HB2	1.56	0.71
1:C:71:LYS:HA	1:C:74:MET:HE2	1.74	0.70
1:D:133:ARG:HB2	1:D:133:ARG:NH1	2.07	0.70
1:C:13:LYS:HE3	1:D:5:MET:HE1	1.74	0.69
1:D:66:ASP:HB3	1:D:69:ILE:HD13	1.75	0.69
1:C:133:ARG:HB2	1:C:133:ARG:HH21	1.58	0.68
1:B:69:ILE:HD12	1:B:70:ILE:N	2.11	0.66
1:D:52:PRO:HB2	1:D:109:VAL:HG12	1.78	0.65
1:C:52:PRO:HB2	1:C:109:VAL:HG12	1.77	0.65
1:A:66:ASP:O	1:A:69:ILE:HG13	1.98	0.64
1:B:52:PRO:HB2	1:B:109:VAL:HG12	1.79	0.64
1:C:133:ARG:HG3	1:C:152:LYS:HD2	1.80	0.63
1:C:68:LYS:O	1:C:72:GLU:HG3	1.99	0.63
1:D:243:LYS:HG3	1:D:278:MET:O	2.00	0.62
1:B:66:ASP:O	1:B:69:ILE:HG13	2.01	0.61
1:D:13:LYS:HG3	1:D:145:GLY:O	2.01	0.61
1:D:244:SER:HB2	1:D:276:GLU:O	2.01	0.60
1:B:196:PHE:CZ	1:B:200:LYS:HE3	2.37	0.60
1:A:52:PRO:HB2	1:A:109:VAL:HG12	1.83	0.59
1:C:71:LYS:HA	1:C:74:MET:CE	2.32	0.59
1:C:12:ILE:HG21	1:C:209:PRO:HB2	1.85	0.58
1:C:35:VAL:O	1:C:39:GLU:HG3	2.04	0.58
1:A:7:LYS:HB3	1:A:7:LYS:NZ	2.19	0.57
1:A:69:ILE:HD12	1:A:70:ILE:N	2.19	0.57
1:A:250:ARG:NH2	1:A:277:PRO:HB3	2.18	0.57
1:C:218:ILE:N	1:C:218:ILE:HD12	2.20	0.57

*Continued on next page...*

*Continued from previous page...*

Atom-1	Atom-2	Interatomic distance (Å)	Clash overlap (Å)
1:D:50:ARG:HH22	1:D:58:GLN:HE22	1.51	0.56
1:A:35:VAL:O	1:A:39:GLU:HG3	2.05	0.56
1:C:240:GLY:O	1:C:243:LYS:HG2	2.06	0.56
1:D:242:PHE:HA	1:D:247:PRO:CB	2.31	0.56
1:B:35:VAL:O	1:B:39:GLU:HG3	2.05	0.55
1:D:133:ARG:HH11	1:D:133:ARG:CB	2.21	0.54
1:C:9:THR:HA	1:D:9:THR:HA	1.89	0.54
1:A:12:ILE:HG21	1:A:209:PRO:HB2	1.89	0.54
1:A:243:LYS:HG3	1:A:278:MET:O	2.08	0.54
1:D:69:ILE:HD12	1:D:69:ILE:N	2.23	0.53
1:D:218:ILE:HD12	1:D:218:ILE:N	2.22	0.53
1:D:30:THR:OG1	1:D:33:GLN:HG3	2.08	0.53
1:B:65:SER:HB3	1:B:69:ILE:HD11	1.91	0.53
1:C:49:GLU:HB2	1:C:69:ILE:HD12	1.91	0.53
1:B:250:ARG:HA	1:B:274:LEU:HD11	1.91	0.53
1:B:133:ARG:HG2	1:B:137:GLU:OE1	2.09	0.52
1:C:133:ARG:HG2	1:C:166:HIS:CE1	2.45	0.52
1:C:52:PRO:HB2	1:C:109:VAL:CG1	2.40	0.51
1:D:133:ARG:HG3	1:D:152:LYS:HD2	1.91	0.51
1:A:150:ARG:HA	1:A:213:PHE:O	2.09	0.51
1:C:133:ARG:HH21	1:C:133:ARG:CB	2.21	0.51
1:D:50:ARG:HH22	1:D:58:GLN:NE2	2.09	0.51
1:D:35:VAL:O	1:D:39:GLU:HG3	2.10	0.51
1:A:13:LYS:HA	1:B:5:MET:HG2	1.94	0.50
1:A:241:ILE:HG23	1:A:250:ARG:HB3	1.93	0.50
1:C:30:THR:OG1	1:C:33:GLN:HG3	2.11	0.50
1:B:150:ARG:HA	1:B:213:PHE:O	2.11	0.49
1:D:56:ARG:HH21	1:D:56:ARG:HB2	1.77	0.49
1:D:68:LYS:O	1:D:72:GLU:HG3	2.12	0.49
1:D:56:ARG:HG3	1:D:57:ALA:N	2.27	0.49
1:A:30:THR:OG1	1:A:33:GLN:HG3	2.12	0.49
1:B:278:MET:O	1:B:278:MET:HG3	2.13	0.49
1:C:241:ILE:HG21	1:C:251:ALA:HB2	1.94	0.49
1:A:196:PHE:CE2	1:A:200:LYS:HD2	2.48	0.48
1:B:244:SER:O	1:B:245:GLY:C	2.52	0.48
1:C:244:SER:HB2	1:C:276:GLU:O	2.13	0.48
1:A:248:ARG:HG3	1:A:248:ARG:HH11	1.78	0.48
1:C:242:PHE:HA	1:C:247:PRO:HB3	1.94	0.48
1:D:133:ARG:HG2	1:D:166:HIS:CE1	2.48	0.48
1:D:150:ARG:HA	1:D:213:PHE:O	2.13	0.48
1:B:12:ILE:HG21	1:B:209:PRO:HB2	1.96	0.48

*Continued on next page...*

*Continued from previous page...*

Atom-1	Atom-2	Interatomic distance (Å)	Clash overlap (Å)
1:C:10:PHE:CE1	1:D:8:GLY:HA3	2.49	0.47
1:A:250:ARG:HH11	1:A:274:LEU:HG	1.80	0.47
1:B:52:PRO:HB2	1:B:109:VAL:CG1	2.44	0.47
1:B:29:THR:HA	1:B:48:LEU:O	2.15	0.47
1:A:52:PRO:HB2	1:A:109:VAL:CG1	2.45	0.47
1:B:196:PHE:CE2	1:B:200:LYS:HE3	2.50	0.47
1:A:5:MET:HE1	1:B:13:LYS:HE2	1.97	0.46
1:A:69:ILE:HD12	1:A:69:ILE:C	2.36	0.46
1:C:150:ARG:HA	1:C:213:PHE:O	2.15	0.46
1:B:54:ASP:O	1:B:58:GLN:HG3	2.16	0.46
1:C:29:THR:HA	1:C:48:LEU:O	2.14	0.46
1:C:240:GLY:HA2	1:C:243:LYS:HE3	1.97	0.46
1:D:13:LYS:HG2	1:D:122:TRP:CZ3	2.50	0.46
1:C:140:ARG:O	1:C:144:GLU:HG3	2.15	0.46
1:D:250:ARG:HA	1:D:274:LEU:HD11	1.97	0.45
1:C:197:GLU:CD	1:C:200:LYS:HZ1	2.20	0.45
1:D:29:THR:HA	1:D:48:LEU:O	2.17	0.44
1:B:52:PRO:CB	1:B:109:VAL:HG12	2.45	0.44
1:C:12:ILE:HG22	1:C:14:THR:HG23	1.99	0.44
1:A:158:GLY:HA3	1:A:278:MET:CE	2.48	0.44
1:B:30:THR:OG1	1:B:33:GLN:HG3	2.18	0.44
1:C:52:PRO:CB	1:C:109:VAL:HG12	2.46	0.43
1:C:71:LYS:CA	1:C:74:MET:HE2	2.46	0.42
1:D:48:LEU:HD23	3:D:1039:HOH:O	2.20	0.42
1:B:69:ILE:HD12	1:B:69:ILE:C	2.39	0.42
1:C:149:ILE:HG22	1:C:150:ARG:N	2.35	0.42
1:A:29:THR:HA	1:A:48:LEU:O	2.20	0.42
1:A:52:PRO:CB	1:A:109:VAL:HG12	2.47	0.42
1:A:50:ARG:HB3	1:A:55:ILE:HD11	2.02	0.41
1:C:216:GLY:HA2	2:C:901:MPD:H11	2.02	0.41
1:A:161:VAL:HG21	1:C:115:GLU:HG3	2.01	0.41
1:C:50:ARG:HB2	1:C:55:ILE:HD11	2.01	0.41
1:A:83:ALA:HB3	1:A:96:LEU:HD13	2.02	0.41
1:C:13:LYS:HG3	1:D:5:MET:CE	2.51	0.41
1:C:18:GLU:HG3	1:C:21:LYS:HE3	2.01	0.41
1:D:140:ARG:O	1:D:144:GLU:HG3	2.20	0.41
1:A:133:ARG:HG3	1:A:152:LYS:HD2	2.03	0.41
1:C:50:ARG:HG2	1:C:50:ARG:HH21	1.86	0.41
1:A:122:TRP:HZ3	1:B:5:MET:HE1	1.86	0.40
1:D:49:GLU:HG2	1:D:65:SER:OG	2.21	0.40
1:D:149:ILE:HG22	1:D:150:ARG:N	2.36	0.40

*Continued on next page...*

Continued from previous page...

Atom-1	Atom-2	Interatomic distance (Å)	Clash overlap (Å)
1:A:7:LYS:HB3	1:A:7:LYS:HZ3	1.86	0.40
1:B:256:ARG:HH21	1:B:256:ARG:HG3	1.87	0.40
1:D:84:LYS:HG2	1:D:105:ASP:HB3	2.02	0.40
1:A:149:ILE:HG22	1:A:150:ARG:N	2.37	0.40

There are no symmetry-related clashes.

## 5.3 Torsion angles [i](#)

### 5.3.1 Protein backbone [i](#)

In the following table, the Percentiles column shows the percent Ramachandran outliers of the chain as a percentile score with respect to all X-ray entries followed by that with respect to entries of similar resolution.

The Analysed column shows the number of residues for which the backbone conformation was analysed, and the total number of residues.

Mol	Chain	Analysed	Favoured	Allowed	Outliers	Percentiles	
1	A	274/297 (92%)	270 (98%)	3 (1%)	1 (0%)	34	16
1	B	272/297 (92%)	269 (99%)	2 (1%)	1 (0%)	34	16
1	C	268/297 (90%)	262 (98%)	6 (2%)	0	100	100
1	D	272/297 (92%)	265 (97%)	6 (2%)	1 (0%)	34	16
All	All	1086/1188 (91%)	1066 (98%)	17 (2%)	3 (0%)	41	22

All (3) Ramachandran outliers are listed below:

Mol	Chain	Res	Type
1	B	245	GLY
1	A	245	GLY
1	D	245	GLY

### 5.3.2 Protein sidechains [i](#)

In the following table, the Percentiles column shows the percent sidechain outliers of the chain as a percentile score with respect to all X-ray entries followed by that with respect to entries of similar resolution.

The Analysed column shows the number of residues for which the sidechain conformation was

analysed, and the total number of residues.

Mol	Chain	Analysed	Rotameric	Outliers	Percentiles	
1	A	211/229 (92%)	210 (100%)	1 (0%)	88	81
1	B	210/229 (92%)	209 (100%)	1 (0%)	88	81
1	C	208/229 (91%)	206 (99%)	2 (1%)	76	62
1	D	210/229 (92%)	208 (99%)	2 (1%)	76	62
All	All	839/916 (92%)	833 (99%)	6 (1%)	84	73

All (6) residues with a non-rotameric sidechain are listed below:

Mol	Chain	Res	Type
1	A	103	PHE
1	B	103	PHE
1	C	56	ARG
1	C	103	PHE
1	D	103	PHE
1	D	125	LYS

Sometimes sidechains can be flipped to improve hydrogen bonding and reduce clashes. All (2) such sidechains are listed below:

Mol	Chain	Res	Type
1	A	117	HIS
1	D	58	GLN

### 5.3.3 RNA [i](#)

There are no RNA molecules in this entry.

## 5.4 Non-standard residues in protein, DNA, RNA chains [i](#)

There are no non-standard protein/DNA/RNA residues in this entry.

## 5.5 Carbohydrates [i](#)

There are no monosaccharides in this entry.

## 5.6 Ligand geometry

4 ligands are modelled in this entry.

In the following table, the Counts columns list the number of bonds (or angles) for which Mogul statistics could be retrieved, the number of bonds (or angles) that are observed in the model and the number of bonds (or angles) that are defined in the Chemical Component Dictionary. The Link column lists molecule types, if any, to which the group is linked. The Z score for a bond length (or angle) is the number of standard deviations the observed value is removed from the expected value. A bond length (or angle) with  $|Z| > 2$  is considered an outlier worth inspection. RMSZ is the root-mean-square of all Z scores of the bond lengths (or angles).

Mol	Type	Chain	Res	Link	Bond lengths			Bond angles		
					Counts	RMSZ	# Z  > 2	Counts	RMSZ	# Z  > 2
2	MPD	A	903	-	7,7,7	0.34	0	9,10,10	1.95	3 (33%)
2	MPD	D	902	-	7,7,7	0.34	0	9,10,10	1.94	3 (33%)
2	MPD	B	904	-	7,7,7	0.32	0	9,10,10	2.72	4 (44%)
2	MPD	C	901	-	7,7,7	0.35	0	9,10,10	2.20	2 (22%)

In the following table, the Chirals column lists the number of chiral outliers, the number of chiral centers analysed, the number of these observed in the model and the number defined in the Chemical Component Dictionary. Similar counts are reported in the Torsion and Rings columns. '-' means no outliers of that kind were identified.

Mol	Type	Chain	Res	Link	Chirals	Torsions	Rings
2	MPD	A	903	-	-	3/5/5/5	-
2	MPD	D	902	-	-	3/5/5/5	-
2	MPD	B	904	-	-	2/5/5/5	-
2	MPD	C	901	-	-	3/5/5/5	-

There are no bond length outliers.

All (12) bond angle outliers are listed below:

Mol	Chain	Res	Type	Atoms	Z	Observed(°)	Ideal(°)
2	B	904	MPD	O4-C4-C3	5.85	134.64	111.35
2	C	901	MPD	CM-C2-C3	-4.94	88.88	110.20
2	D	902	MPD	CM-C2-C3	-4.12	92.41	110.20
2	B	904	MPD	O2-C2-C3	3.76	123.32	109.27
2	A	903	MPD	CM-C2-C3	-3.62	94.59	110.20
2	C	901	MPD	C1-C2-C3	3.41	124.92	110.20
2	A	903	MPD	O2-C2-C3	3.38	121.92	109.27
2	D	902	MPD	O2-C2-C3	2.93	120.24	109.27
2	B	904	MPD	O4-C4-C5	-2.75	97.63	109.45

*Continued on next page...*

*Continued from previous page...*

Mol	Chain	Res	Type	Atoms	Z	Observed(°)	Ideal(°)
2	B	904	MPD	CM-C2-C3	-2.75	98.35	110.20
2	A	903	MPD	O4-C4-C5	-2.30	99.55	109.45
2	D	902	MPD	O4-C4-C5	-2.10	100.43	109.45

There are no chirality outliers.

All (11) torsion outliers are listed below:

Mol	Chain	Res	Type	Atoms
2	A	903	MPD	O2-C2-C3-C4
2	D	902	MPD	O2-C2-C3-C4
2	A	903	MPD	C1-C2-C3-C4
2	A	903	MPD	CM-C2-C3-C4
2	B	904	MPD	CM-C2-C3-C4
2	C	901	MPD	C1-C2-C3-C4
2	C	901	MPD	CM-C2-C3-C4
2	D	902	MPD	CM-C2-C3-C4
2	C	901	MPD	O2-C2-C3-C4
2	B	904	MPD	C1-C2-C3-C4
2	D	902	MPD	C1-C2-C3-C4

There are no ring outliers.

1 monomer is involved in 1 short contact:

Mol	Chain	Res	Type	Clashes	Symm-Clashes
2	C	901	MPD	1	0

## 5.7 Other polymers [i](#)

There are no such residues in this entry.

## 5.8 Polymer linkage issues [i](#)

There are no chain breaks in this entry.

## 6 Fit of model and data [i](#)

### 6.1 Protein, DNA and RNA chains [i](#)

In the following table, the column labelled ‘#RSRZ > 2’ contains the number (and percentage) of RSRZ outliers, followed by percent RSRZ outliers for the chain as percentile scores relative to all X-ray entries and entries of similar resolution. The OWAB column contains the minimum, median, 95<sup>th</sup> percentile and maximum values of the occupancy-weighted average B-factor per residue. The column labelled ‘Q < 0.9’ lists the number of (and percentage) of residues with an average occupancy less than 0.9.

Mol	Chain	Analysed	<RSRZ>	#RSRZ>2	OWAB(Å <sup>2</sup> )	Q<0.9
1	A	276/297 (92%)	0.14	25 (9%) 9   8	11, 17, 42, 59	0
1	B	274/297 (92%)	0.13	21 (7%) 13   13	11, 17, 42, 51	0
1	C	270/297 (90%)	0.19	21 (7%) 13   12	11, 18, 43, 55	0
1	D	274/297 (92%)	0.31	29 (10%) 6   5	12, 18, 48, 60	0
All	All	1094/1188 (92%)	0.19	96 (8%) 10   9	11, 17, 44, 60	0

All (96) RSRZ outliers are listed below:

Mol	Chain	Res	Type	RSRZ
1	C	9	THR	7.9
1	B	56	ARG	7.2
1	D	59	GLY	7.1
1	A	278	MET	6.4
1	D	8	GLY	6.4
1	D	10	PHE	6.3
1	D	56	ARG	6.3
1	B	245	GLY	6.1
1	D	244	SER	6.1
1	D	9	THR	5.9
1	D	278	MET	5.7
1	A	56	ARG	5.7
1	D	243	LYS	5.7
1	C	59	GLY	5.7
1	A	57	ALA	5.6
1	C	10	PHE	5.5
1	C	244	SER	5.4
1	A	59	GLY	5.2
1	D	57	ALA	5.2
1	D	7	LYS	5.1
1	C	245	GLY	5.0

*Continued on next page...*



*Continued from previous page...*

<b>Mol</b>	<b>Chain</b>	<b>Res</b>	<b>Type</b>	<b>RSRZ</b>
1	D	242	PHE	5.0
1	C	242	PHE	4.9
1	C	58	GLN	4.8
1	D	247	PRO	4.5
1	D	58	GLN	4.4
1	D	5	MET	4.3
1	C	276	GLU	4.1
1	B	242	PHE	4.1
1	C	57	ALA	4.1
1	B	57	ALA	4.1
1	A	58	GLN	3.9
1	C	278	MET	3.9
1	A	242	PHE	3.9
1	A	50	ARG	3.7
1	A	245	GLY	3.7
1	B	239	SER	3.6
1	D	50	ARG	3.6
1	A	276	GLU	3.5
1	D	241	ILE	3.5
1	C	56	ARG	3.5
1	B	59	GLY	3.4
1	C	247	PRO	3.4
1	B	275	GLY	3.4
1	A	4	GLY	3.4
1	B	278	MET	3.4
1	D	239	SER	3.3
1	A	244	SER	3.3
1	B	277	PRO	3.3
1	D	6	GLU	3.3
1	B	58	GLN	3.3
1	D	246	ASP	3.2
1	C	53	ALA	3.2
1	A	239	SER	3.1
1	A	7	LYS	3.0
1	A	5	MET	2.9
1	D	53	ALA	2.8
1	A	243	LYS	2.7
1	B	244	SER	2.7
1	C	243	LYS	2.7
1	D	16	PHE	2.7
1	A	3	GLY	2.6
1	D	240	GLY	2.6

*Continued on next page...*

*Continued from previous page...*

Mol	Chain	Res	Type	RSRZ
1	B	241	ILE	2.6
1	C	246	ASP	2.6
1	B	247	PRO	2.6
1	D	277	PRO	2.6
1	C	275	GLY	2.5
1	B	156	GLY	2.5
1	C	51	VAL	2.5
1	A	53	ALA	2.5
1	C	50	ARG	2.4
1	A	277	PRO	2.4
1	A	51	VAL	2.4
1	D	12	ILE	2.4
1	C	54	ASP	2.4
1	A	54	ASP	2.4
1	A	69	ILE	2.4
1	D	13	LYS	2.3
1	A	55	ILE	2.3
1	D	245	GLY	2.3
1	B	54	ASP	2.3
1	B	5	MET	2.3
1	B	50	ARG	2.2
1	D	156	GLY	2.2
1	C	241	ILE	2.2
1	D	52	PRO	2.2
1	A	156	GLY	2.1
1	B	276	GLU	2.1
1	A	247	PRO	2.1
1	D	14	THR	2.1
1	B	53	ALA	2.1
1	B	243	LYS	2.0
1	A	250	ARG	2.0
1	B	55	ILE	2.0
1	C	239	SER	2.0

## 6.2 Non-standard residues in protein, DNA, RNA chains [i](#)

There are no non-standard protein/DNA/RNA residues in this entry.

## 6.3 Carbohydrates [i](#)

There are no monosaccharides in this entry.

## 6.4 Ligands [i](#)

In the following table, the Atoms column lists the number of modelled atoms in the group and the number defined in the chemical component dictionary. The B-factors column lists the minimum, median, 95<sup>th</sup> percentile and maximum values of B factors of atoms in the group. The column labelled 'Q< 0.9' lists the number of atoms with occupancy less than 0.9.

Mol	Type	Chain	Res	Atoms	RSCC	RSR	B-factors(Å <sup>2</sup> )	Q<0.9
2	MPD	A	903	8/8	0.53	0.26	34,37,37,38	0
2	MPD	B	904	8/8	0.71	0.29	34,36,36,37	0
2	MPD	D	902	8/8	0.78	0.18	32,34,34,35	0
2	MPD	C	901	8/8	0.86	0.14	30,33,35,35	0

## 6.5 Other polymers [i](#)

There are no such residues in this entry.