



# Full wwPDB X-ray Structure Validation Report

Jun 17, 2024 – 09:35 AM EDT

PDB ID : 2Y2J  
Title : PENICILLIN-BINDING PROTEIN 1B (PBP-1B) IN COMPLEX WITH AN ALKYL BORONATE (ZA4)  
Authors : Contreras-Martel, C.; Amoroso, A.; Woon, E.C.; Zervosen, A.; Inglis, S.; Martins, A.; Verlaine, O.; Rydzik, A.; Job, V.; Luxen, A.; Joris, B.; Schofield, C.J.; Dessen, A.  
Deposited on : 2010-12-15  
Resolution : 2.06 Å(reported)

This is a Full wwPDB X-ray Structure Validation Report for a publicly released PDB entry.

We welcome your comments at [validation@mail.wwpdb.org](mailto:validation@mail.wwpdb.org)

A user guide is available at

<https://www.wwpdb.org/validation/2017/XrayValidationReportHelp>

with specific help available everywhere you see the  symbol.

The types of validation reports are described at

<http://www.wwpdb.org/validation/2017/FAQs#types>.

---

The following versions of software and data (see [references](#) ) were used in the production of this report:

MolProbity : 4.02b-467  
Mogul : 2022.3.0, CSD as543be (2022)  
Xtriage (Phenix) : 1.20.1  
EDS : 2.37.1  
Percentile statistics : 20191225.v01 (using entries in the PDB archive December 25th 2019)  
Refmac : 5.8.0158  
CCP4 : 7.0.044 (Gargrove)  
Ideal geometry (proteins) : Engh & Huber (2001)  
Ideal geometry (DNA, RNA) : Parkinson et al. (1996)  
Validation Pipeline (wwPDB-VP) : 2.37.1

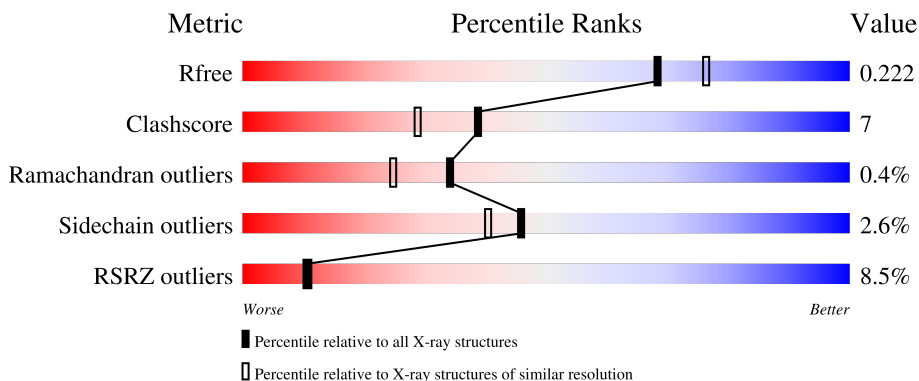
# 1 Overall quality at a glance

The following experimental techniques were used to determine the structure:

*X-RAY DIFFRACTION*

The reported resolution of this entry is 2.06 Å.

Percentile scores (ranging between 0-100) for global validation metrics of the entry are shown in the following graphic. The table shows the number of entries on which the scores are based.



Metric	Whole archive (#Entries)	Similar resolution (#Entries, resolution range(Å))
$R_{free}$	130704	2684 (2.08-2.04)
Clashscore	141614	2801 (2.08-2.04)
Ramachandran outliers	138981	2768 (2.08-2.04)
Sidechain outliers	138945	2768 (2.08-2.04)
RSRZ outliers	127900	2646 (2.08-2.04)

The table below summarises the geometric issues observed across the polymeric chains and their fit to the electron density. The red, orange, yellow and green segments of the lower bar indicate the fraction of residues that contain outliers for  $\geq 3$ , 2, 1 and 0 types of geometric quality criteria respectively. A grey segment represents the fraction of residues that are not modelled. The numeric value for each fraction is indicated below the corresponding segment, with a dot representing fractions  $\leq 5\%$ . The upper red bar (where present) indicates the fraction of residues that have poor fit to the electron density. The numeric value is given above the bar.

Mol	Chain	Length	Quality of chain
1	A	494	

## 2 Entry composition [i](#)

There are 7 unique types of molecules in this entry. The entry contains 3964 atoms, of which 0 are hydrogens and 0 are deuteriums.

In the tables below, the ZeroOcc column contains the number of atoms modelled with zero occupancy, the AltConf column contains the number of residues with at least one atom in alternate conformation and the Trace column contains the number of residues modelled with at most 2 atoms.

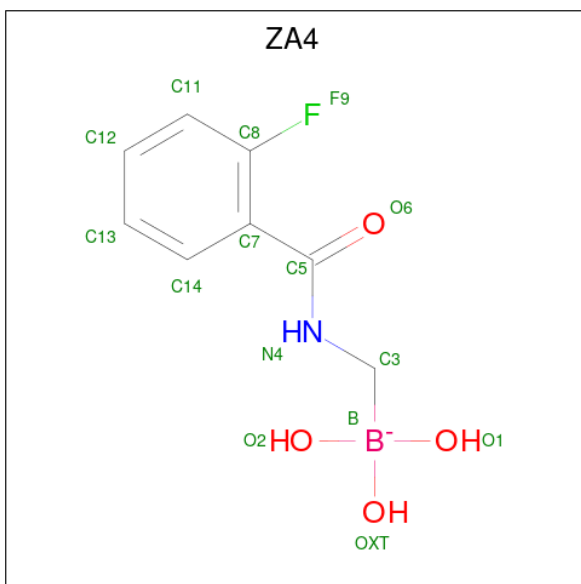
- Molecule 1 is a protein called PENICILLIN-BINDING PROTEIN 1B.

Mol	Chain	Residues	Atoms					ZeroOcc	AltConf	Trace
			Total	C	N	O	S			
1	A	470	3650	2284	623	728	15	0	5	0

There are 3 discrepancies between the modelled and reference sequences:

Chain	Residue	Modelled	Actual	Comment	Reference
A	656	GLY	ASN	engineered mutation	UNP Q7CRA4
A	686	GLN	ARG	engineered mutation	UNP Q7CRA4
A	687	GLN	ARG	engineered mutation	UNP Q7CRA4

- Molecule 2 is [(2-FLUOROPHENYL)CARBONYLAMINO]METHYL-TRIHYDROXY-BORON (three-letter code: ZA4) (formula: C<sub>8</sub>H<sub>10</sub>BFNO<sub>4</sub>).



Mol	Chain	Residues	Atoms					ZeroOcc	AltConf	
			Total	B	C	F	N			O
2	A	1	14	1	8	1	1	3	0	0

- Molecule 3 is SULFATE ION (three-letter code: SO4) (formula: O<sub>4</sub>S).



Mol	Chain	Residues	Atoms			ZeroOcc	AltConf
3	A	1	Total	O	S	0	0
			5	4	1		

- Molecule 4 is CHLORIDE ION (three-letter code: CL) (formula: Cl).

Mol	Chain	Residues	Atoms		ZeroOcc	AltConf
4	A	15	Total	Cl	0	0
			15	15		

- Molecule 5 is SODIUM ION (three-letter code: NA) (formula: Na).

Mol	Chain	Residues	Atoms		ZeroOcc	AltConf
5	A	1	Total	Na	0	0
			1	1		

- Molecule 6 is 1,2-ETHANEDIOL (three-letter code: EDO) (formula: C<sub>2</sub>H<sub>6</sub>O<sub>2</sub>).



Mol	Chain	Residues	Atoms	ZeroOcc	AltConf
6	A	1	Total C O 4 2 2	0	0

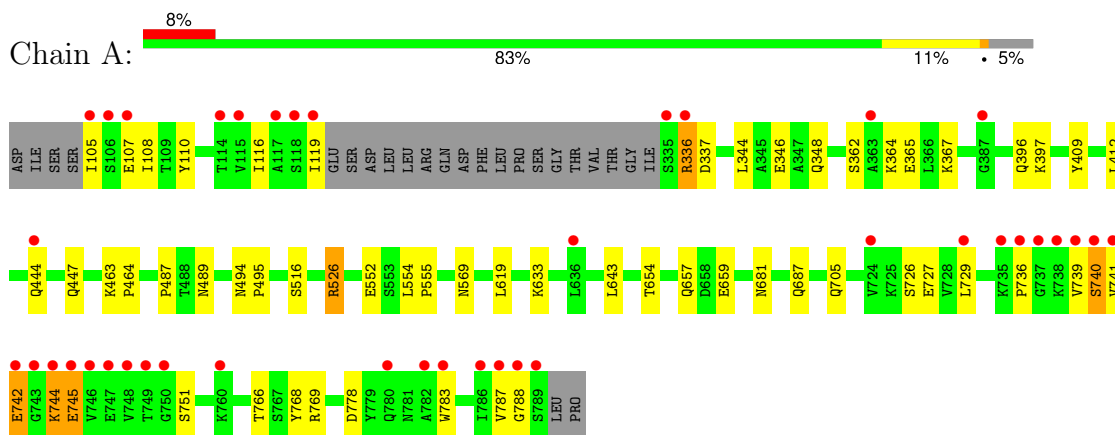
- Molecule 7 is water.

Mol	Chain	Residues	Atoms	ZeroOcc	AltConf
7	A	275	Total O 275 275	0	0

### 3 Residue-property plots

These plots are drawn for all protein, RNA, DNA and oligosaccharide chains in the entry. The first graphic for a chain summarises the proportions of the various outlier classes displayed in the second graphic. The second graphic shows the sequence view annotated by issues in geometry and electron density. Residues are color-coded according to the number of geometric quality criteria for which they contain at least one outlier: green = 0, yellow = 1, orange = 2 and red = 3 or more. A red dot above a residue indicates a poor fit to the electron density ( $RSRZ > 2$ ). Stretches of 2 or more consecutive residues without any outlier are shown as a green connector. Residues present in the sample, but not in the model, are shown in grey.

- Molecule 1: PENICILLIN-BINDING PROTEIN 1B



## 4 Data and refinement statistics

Property	Value	Source
Space group	C 2 2 21	Depositor
Cell constants a, b, c, $\alpha$ , $\beta$ , $\gamma$	97.96Å 149.04Å 97.28Å 90.00° 90.00° 90.00°	Depositor
Resolution (Å)	48.98 – 2.06 48.98 – 2.06	Depositor EDS
% Data completeness (in resolution range)	97.6 (48.98-2.06) 97.6 (48.98-2.06)	Depositor EDS
$R_{merge}$	(Not available)	Depositor
$R_{sym}$	0.05	Depositor
$\langle I/\sigma(I) \rangle$ <sup>1</sup>	2.07 (at 2.07Å)	Xtrriage
Refinement program	REFMAC 5.6.0095	Depositor
R, $R_{free}$	0.184 , 0.221 0.184 , 0.222	Depositor DCC
$R_{free}$ test set	4335 reflections (10.09%)	wwPDB-VP
Wilson B-factor (Å <sup>2</sup> )	34.3	Xtrriage
Anisotropy	0.116	Xtrriage
Bulk solvent $k_{sol}$ (e/Å <sup>3</sup> ), $B_{sol}$ (Å <sup>2</sup> )	0.36 , 50.8	EDS
L-test for twinning <sup>2</sup>	$\langle  L  \rangle = 0.48$ , $\langle L^2 \rangle = 0.31$	Xtrriage
Estimated twinning fraction	No twinning to report.	Xtrriage
$F_o, F_c$ correlation	0.96	EDS
Total number of atoms	3964	wwPDB-VP
Average B, all atoms (Å <sup>2</sup> )	46.0	wwPDB-VP

Xtrriage's analysis on translational NCS is as follows: *The largest off-origin peak in the Patterson function is 3.83% of the height of the origin peak. No significant pseudotranslation is detected.*

<sup>1</sup>Intensities estimated from amplitudes.

<sup>2</sup>Theoretical values of  $\langle |L| \rangle$ ,  $\langle L^2 \rangle$  for acentric reflections are 0.5, 0.333 respectively for untwinned datasets, and 0.375, 0.2 for perfectly twinned datasets.

## 5 Model quality [i](#)

### 5.1 Standard geometry [i](#)

Bond lengths and bond angles in the following residue types are not validated in this section: NA, ZA4, SO4, CL, EDO

The Z score for a bond length (or angle) is the number of standard deviations the observed value is removed from the expected value. A bond length (or angle) with  $|Z| > 5$  is considered an outlier worth inspection. RMSZ is the root-mean-square of all Z scores of the bond lengths (or angles).

Mol	Chain	Bond lengths		Bond angles	
		RMSZ	# Z  >5	RMSZ	# Z  >5
1	A	0.88	3/3738 (0.1%)	0.73	0/5070

All (3) bond length outliers are listed below:

Mol	Chain	Res	Type	Atoms	Z	Observed(Å)	Ideal(Å)
1	A	744	LYS	CE-NZ	23.78	2.08	1.49
1	A	745	GLU	CB-CG	7.50	1.66	1.52
1	A	740	SER	CB-OG	6.12	1.50	1.42

There are no bond angle outliers.

There are no chirality outliers.

There are no planarity outliers.

### 5.2 Too-close contacts [i](#)

In the following table, the Non-H and H(model) columns list the number of non-hydrogen atoms and hydrogen atoms in the chain respectively. The H(added) column lists the number of hydrogen atoms added and optimized by MolProbity. The Clashes column lists the number of clashes within the asymmetric unit, whereas Symm-Clashes lists symmetry-related clashes.

Mol	Chain	Non-H	H(model)	H(added)	Clashes	Symm-Clashes
1	A	3650	0	3535	53	0
2	A	14	0	9	0	0
3	A	5	0	0	0	0
4	A	15	0	0	6	0
5	A	1	0	0	0	0
6	A	4	0	6	1	0
7	A	275	0	0	18	0
All	All	3964	0	3550	54	0



The all-atom clashscore is defined as the number of clashes found per 1000 atoms (including hydrogen atoms). The all-atom clashscore for this structure is 7.

All (54) close contacts within the same asymmetric unit are listed below, sorted by their clash magnitude.

Atom-1	Atom-2	Interatomic distance (Å)	Clash overlap (Å)
1:A:744:LYS:CE	1:A:744:LYS:NZ	2.08	1.16
1:A:444:GLN:HG2	7:A:2072:HOH:O	1.59	1.02
1:A:108:ILE:HD12	1:A:119:ILE:HD11	1.44	0.96
1:A:526[B]:ARG:HD2	7:A:2123:HOH:O	1.75	0.86
1:A:108:ILE:CD1	1:A:119:ILE:HD11	2.10	0.82
1:A:447:GLN:HG2	7:A:2075:HOH:O	1.83	0.79
1:A:739:VAL:HG21	1:A:766:THR:HG22	1.67	0.76
1:A:365:GLU:HB3	7:A:2019:HOH:O	1.88	0.72
1:A:741:VAL:O	1:A:742:GLU:O	2.07	0.71
1:A:362:SER:OG	1:A:365:GLU:HG3	1.92	0.68
4:A:1224:CL:CL	7:A:2076:HOH:O	2.49	0.66
1:A:687:GLN:HB2	7:A:2217:HOH:O	1.95	0.65
1:A:654:THR:HG22	7:A:2207:HOH:O	2.00	0.60
1:A:739:VAL:CG2	1:A:766:THR:HG22	2.30	0.60
1:A:364:LYS:HA	1:A:367:LYS:HD2	1.83	0.59
1:A:336:ARG:H	1:A:336:ARG:HD2	1.67	0.58
1:A:397:LYS:HD2	7:A:2235:HOH:O	2.04	0.57
1:A:362:SER:OG	1:A:364:LYS:HG2	2.04	0.57
1:A:745:GLU:O	1:A:745:GLU:HG3	2.03	0.56
1:A:633:LYS:HG2	4:A:1202:CL:CL	2.43	0.56
1:A:526[A]:ARG:NE	7:A:2124:HOH:O	2.39	0.54
1:A:409:TYR:HB3	1:A:412:LEU:HD12	1.90	0.54
1:A:657:GLN:HB2	1:A:659:GLU:OE2	2.08	0.54
1:A:729:LEU:HD11	1:A:736:PRO:HA	1.91	0.52
1:A:526[A]:ARG:HD2	7:A:2123:HOH:O	2.09	0.52
1:A:346:GLU:HG2	4:A:1212:CL:CL	2.48	0.51
1:A:778:ASP:HA	7:A:2270:HOH:O	2.10	0.50
1:A:768:TYR:CE1	1:A:783:TRP:CD1	2.98	0.50
1:A:554:LEU:N	1:A:555:PRO:HD2	2.27	0.50
1:A:751:SER:O	4:A:1217:CL:CL	2.68	0.49
1:A:344:LEU:O	1:A:348:GLN:HG3	2.14	0.47
1:A:619:LEU:HD23	6:A:1400:EDO:H11	1.96	0.47
1:A:657:GLN:HB2	1:A:659:GLU:CD	2.34	0.47
1:A:643:LEU:HD22	1:A:705:GLN:HB2	1.96	0.46
1:A:447:GLN:CG	7:A:2075:HOH:O	2.55	0.46
1:A:107:GLU:HG2	7:A:2001:HOH:O	2.15	0.46
1:A:110:TYR:HB3	4:A:1216:CL:CL	2.54	0.45

*Continued on next page...*

Continued from previous page...

Atom-1	Atom-2	Interatomic distance (Å)	Clash overlap (Å)
1:A:643:LEU:HD22	1:A:705:GLN:CB	2.47	0.45
1:A:487:PRO:HA	7:A:2110:HOH:O	2.16	0.45
1:A:362:SER:HG	1:A:365:GLU:HG3	1.79	0.44
1:A:336:ARG:CD	1:A:336:ARG:N	2.81	0.44
1:A:336:ARG:HD2	1:A:336:ARG:N	2.32	0.44
1:A:526[B]:ARG:HD3	1:A:526[B]:ARG:HA	1.81	0.43
1:A:489:ASN:HD22	1:A:495:PRO:HA	1.84	0.43
1:A:494:ASN:ND2	4:A:1792:CL:CL	2.77	0.43
1:A:552:GLU:OE2	7:A:2151:HOH:O	2.21	0.42
1:A:110:TYR:CG	1:A:396[A]:GLN:HB2	2.54	0.42
1:A:654:THR:CG2	7:A:2207:HOH:O	2.63	0.41
1:A:397:LYS:HD3	7:A:2041:HOH:O	2.19	0.41
1:A:783:TRP:O	1:A:787:VAL:HG23	2.21	0.41
1:A:444:GLN:CG	7:A:2072:HOH:O	2.40	0.41
1:A:463:LYS:HB2	1:A:464:PRO:HD3	2.02	0.41
1:A:739:VAL:CG1	1:A:740:SER:N	2.84	0.41
1:A:108:ILE:HG22	1:A:116:ILE:HD12	2.03	0.40

There are no symmetry-related clashes.

## 5.3 Torsion angles [i](#)

### 5.3.1 Protein backbone [i](#)

In the following table, the Percentiles column shows the percent Ramachandran outliers of the chain as a percentile score with respect to all X-ray entries followed by that with respect to entries of similar resolution.

The Analysed column shows the number of residues for which the backbone conformation was analysed, and the total number of residues.

Mol	Chain	Analysed	Favoured	Allowed	Outliers	Percentiles
1	A	471/494 (95%)	449 (95%)	20 (4%)	2 (0%)	34 25

All (2) Ramachandran outliers are listed below:

Mol	Chain	Res	Type
1	A	742	GLU
1	A	788	GLY

### 5.3.2 Protein sidechains

In the following table, the Percentiles column shows the percent sidechain outliers of the chain as a percentile score with respect to all X-ray entries followed by that with respect to entries of similar resolution.

The Analysed column shows the number of residues for which the sidechain conformation was analysed, and the total number of residues.

Mol	Chain	Analysed	Rotameric	Outliers	Percentiles
1	A	390/408 (96%)	379 (97%)	11 (3%)	43 37

All (11) residues with a non-rotameric sidechain are listed below:

Mol	Chain	Res	Type
1	A	105	ILE
1	A	336	ARG
1	A	337	ASP
1	A	516	SER
1	A	526[A]	ARG
1	A	526[B]	ARG
1	A	569	ASN
1	A	681	ASN
1	A	726	SER
1	A	727	GLU
1	A	769	ARG

Sometimes sidechains can be flipped to improve hydrogen bonding and reduce clashes. All (6) such sidechains are listed below:

Mol	Chain	Res	Type
1	A	424	ASN
1	A	448	ASN
1	A	489	ASN
1	A	645	ASN
1	A	692	ASN
1	A	706	GLN

### 5.3.3 RNA

There are no RNA molecules in this entry.

## 5.4 Non-standard residues in protein, DNA, RNA chains [i](#)

There are no non-standard protein/DNA/RNA residues in this entry.

## 5.5 Carbohydrates [i](#)

There are no monosaccharides in this entry.

## 5.6 Ligand geometry [i](#)

Of 19 ligands modelled in this entry, 16 are monoatomic - leaving 3 for Mogul analysis.

In the following table, the Counts columns list the number of bonds (or angles) for which Mogul statistics could be retrieved, the number of bonds (or angles) that are observed in the model and the number of bonds (or angles) that are defined in the Chemical Component Dictionary. The Link column lists molecule types, if any, to which the group is linked. The Z score for a bond length (or angle) is the number of standard deviations the observed value is removed from the expected value. A bond length (or angle) with  $|Z| > 2$  is considered an outlier worth inspection. RMSZ is the root-mean-square of all Z scores of the bond lengths (or angles).

Mol	Type	Chain	Res	Link	Bond lengths			Bond angles		
					Counts	RMSZ	# Z  > 2	Counts	RMSZ	# Z  > 2
6	EDO	A	1400	-	3,3,3	0.60	0	2,2,2	0.31	0
3	SO4	A	1100	-	4,4,4	0.80	0	6,6,6	0.59	0
2	ZA4	A	1000	5,1	14,14,15	1.72	1 (7%)	13,18,21	1.90	3 (23%)

In the following table, the Chirals column lists the number of chiral outliers, the number of chiral centers analysed, the number of these observed in the model and the number defined in the Chemical Component Dictionary. Similar counts are reported in the Torsion and Rings columns. '-' means no outliers of that kind were identified.

Mol	Type	Chain	Res	Link	Chirals	Torsions	Rings
6	EDO	A	1400	-	-	1/1/1/1	-
2	ZA4	A	1000	5,1	-	1/6/9/10	0/1/1/1

All (1) bond length outliers are listed below:

Mol	Chain	Res	Type	Atoms	Z	Observed(Å)	Ideal(Å)
2	A	1000	ZA4	C5-N4	5.39	1.45	1.33

All (3) bond angle outliers are listed below:

Mol	Chain	Res	Type	Atoms	Z	Observed(°)	Ideal(°)
2	A	1000	ZA4	C14-C7-C8	3.92	121.05	116.70
2	A	1000	ZA4	C11-C8-C7	-3.85	118.92	123.07
2	A	1000	ZA4	F9-C8-C7	2.17	123.28	119.62

There are no chirality outliers.

All (2) torsion outliers are listed below:

Mol	Chain	Res	Type	Atoms
2	A	1000	ZA4	N4-C5-C7-C8
6	A	1400	EDO	O1-C1-C2-O2

There are no ring outliers.

1 monomer is involved in 1 short contact:

Mol	Chain	Res	Type	Clashes	Symm-Clashes
6	A	1400	EDO	1	0

## 5.7 Other polymers [i](#)

There are no such residues in this entry.

## 5.8 Polymer linkage issues [i](#)

There are no chain breaks in this entry.

## 6 Fit of model and data

### 6.1 Protein, DNA and RNA chains

In the following table, the column labelled ‘#RSRZ > 2’ contains the number (and percentage) of RSRZ outliers, followed by percent RSRZ outliers for the chain as percentile scores relative to all X-ray entries and entries of similar resolution. The OWAB column contains the minimum, median, 95<sup>th</sup> percentile and maximum values of the occupancy-weighted average B-factor per residue. The column labelled ‘Q < 0.9’ lists the number of (and percentage) of residues with an average occupancy less than 0.9.

Mol	Chain	Analysed	<RSRZ>	#RSRZ>2	OWAB(Å <sup>2</sup> )	Q<0.9
1	A	470/494 (95%)	0.52	40 (8%) <b>10</b> <b>11</b>	25, 40, 90, 172	0

All (40) RSRZ outliers are listed below:

Mol	Chain	Res	Type	RSRZ
1	A	786	ILE	8.2
1	A	787	VAL	8.2
1	A	739	VAL	7.7
1	A	105	ILE	7.4
1	A	744	LYS	7.4
1	A	737	GLY	7.3
1	A	738	LYS	6.7
1	A	750	GLY	6.5
1	A	743	GLY	6.3
1	A	746	VAL	5.8
1	A	335	SER	5.8
1	A	115	VAL	4.8
1	A	740	SER	4.7
1	A	748	VAL	4.5
1	A	745	GLU	4.3
1	A	736	PRO	4.3
1	A	106	SER	3.9
1	A	741	VAL	3.7
1	A	117	ALA	3.6
1	A	782	ALA	3.5
1	A	780	GLN	3.2
1	A	747	GLU	3.1
1	A	749	THR	3.0
1	A	789	SER	3.0
1	A	363	ALA	2.9
1	A	788	GLY	2.9
1	A	724	VAL	2.8

*Continued on next page...*

*Continued from previous page...*

Mol	Chain	Res	Type	RSRZ
1	A	735	LYS	2.7
1	A	336	ARG	2.7
1	A	783	TRP	2.6
1	A	387	GLY	2.6
1	A	118	SER	2.5
1	A	119	ILE	2.5
1	A	742	GLU	2.5
1	A	114	THR	2.4
1	A	760	LYS	2.4
1	A	107	GLU	2.3
1	A	636	LEU	2.2
1	A	444	GLN	2.0
1	A	729	LEU	2.0

## 6.2 Non-standard residues in protein, DNA, RNA chains [i](#)

There are no non-standard protein/DNA/RNA residues in this entry.

## 6.3 Carbohydrates [i](#)

There are no monosaccharides in this entry.

## 6.4 Ligands [i](#)

In the following table, the Atoms column lists the number of modelled atoms in the group and the number defined in the chemical component dictionary. The B-factors column lists the minimum, median, 95<sup>th</sup> percentile and maximum values of B factors of atoms in the group. The column labelled 'Q< 0.9' lists the number of atoms with occupancy less than 0.9.

Mol	Type	Chain	Res	Atoms	RSCC	RSR	B-factors( $\text{\AA}^2$ )	Q<0.9
4	CL	A	1216	1/1	0.87	0.19	57,57,57,57	0
6	EDO	A	1400	4/4	0.87	0.20	44,45,50,54	0
4	CL	A	1208	1/1	0.91	0.23	62,62,62,62	0
4	CL	A	1217	1/1	0.92	0.38	72,72,72,72	0
4	CL	A	1792	1/1	0.95	0.13	63,63,63,63	1
5	NA	A	1300	1/1	0.96	0.27	29,29,29,29	0
2	ZA4	A	1000	14/15	0.96	0.12	33,40,51,52	0
4	CL	A	1200	1/1	0.97	0.09	41,41,41,41	0
4	CL	A	1202	1/1	0.97	0.15	52,52,52,52	0
4	CL	A	1206	1/1	0.97	0.11	50,50,50,50	0

*Continued on next page...*

*Continued from previous page...*

Mol	Type	Chain	Res	Atoms	RSCC	RSR	B-factors( $\text{\AA}^2$ )	Q<0.9
3	SO4	A	1100	5/5	0.98	0.10	36,45,45,45	0
4	CL	A	1227	1/1	0.98	0.07	51,51,51,51	0
4	CL	A	1791	1/1	0.98	0.18	29,29,29,29	1
4	CL	A	1213	1/1	0.98	0.27	52,52,52,52	0
4	CL	A	1214	1/1	0.98	0.13	49,49,49,49	0
4	CL	A	1201	1/1	0.98	0.07	38,38,38,38	0
4	CL	A	1224	1/1	0.99	0.07	46,46,46,46	0
4	CL	A	1211	1/1	0.99	0.07	40,40,40,40	0
4	CL	A	1212	1/1	0.99	0.06	42,42,42,42	0

## 6.5 Other polymers [i](#)

There are no such residues in this entry.