



Full wwPDB X-ray Structure Validation Report ⓘ

Jun 18, 2024 – 03:23 AM EDT

PDB ID : 2XCU
Title : Membrane-embedded monofunctional glycosyltransferase WaaA of *Aquifex aeolicus*, complex with CMP
Authors : Schmidt, H.; Hansen, G.; Hilgenfeld, R.; Mamat, U.; Mesters, J.R.
Deposited on : 2010-04-26
Resolution : 2.42 Å (reported)

This is a Full wwPDB X-ray Structure Validation Report for a publicly released PDB entry.

We welcome your comments at validation@mail.wwpdb.org

A user guide is available at

<https://www.wwpdb.org/validation/2017/XrayValidationReportHelp>

with specific help available everywhere you see the ⓘ symbol.

The types of validation reports are described at

<http://www.wwpdb.org/validation/2017/FAQs#types>.

The following versions of software and data (see [references ⓘ](#)) were used in the production of this report:

MolProbity : 4.02b-467
Mogul : 2022.3.0, CSD as543be (2022)
Xtriage (Phenix) : 1.20.1
EDS : 2.37.1
buster-report : 1.1.7 (2018)
Percentile statistics : 20191225.v01 (using entries in the PDB archive December 25th 2019)
Refmac : 5.8.0158
CCP4 : 7.0.044 (Gargrove)
Ideal geometry (proteins) : Engh & Huber (2001)
Ideal geometry (DNA, RNA) : Parkinson et al. (1996)
Validation Pipeline (wwPDB-VP) : 2.37.1

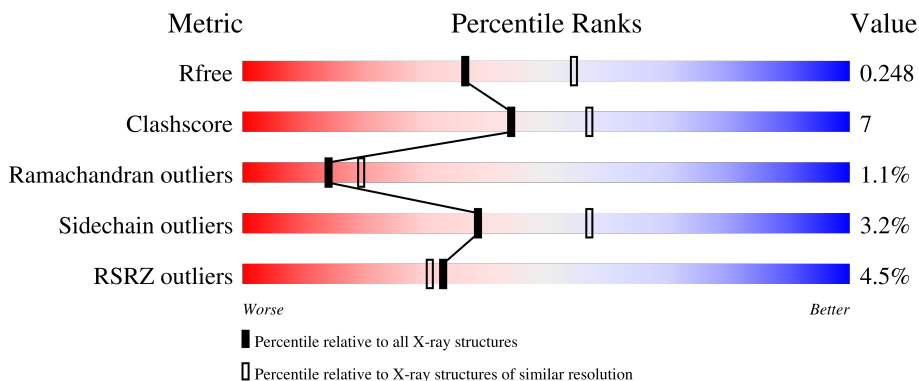
1 Overall quality at a glance

The following experimental techniques were used to determine the structure:

X-RAY DIFFRACTION

The reported resolution of this entry is 2.42 Å.

Percentile scores (ranging between 0-100) for global validation metrics of the entry are shown in the following graphic. The table shows the number of entries on which the scores are based.



Metric	Whole archive (#Entries)	Similar resolution (#Entries, resolution range(Å))
R_{free}	130704	4647 (2.44-2.40)
Clashscore	141614	5161 (2.44-2.40)
Ramachandran outliers	138981	5073 (2.44-2.40)
Sidechain outliers	138945	5074 (2.44-2.40)
RSRZ outliers	127900	4543 (2.44-2.40)

The table below summarises the geometric issues observed across the polymeric chains and their fit to the electron density. The red, orange, yellow and green segments of the lower bar indicate the fraction of residues that contain outliers for ≥ 3 , 2, 1 and 0 types of geometric quality criteria respectively. A grey segment represents the fraction of residues that are not modelled. The numeric value for each fraction is indicated below the corresponding segment, with a dot representing fractions $\leq 5\%$. The upper red bar (where present) indicates the fraction of residues that have poor fit to the electron density. The numeric value is given above the bar.

Mol	Chain	Length	Quality of chain
1	A	374	 2% 78% 14% • 6%
1	B	374	 5% 80% 13% • 6%
1	C	374	 5% 81% 12% • 6%
1	D	374	 5% 78% 14% • 6%

The following table lists non-polymeric compounds, carbohydrate monomers and non-standard

residues in protein, DNA, RNA chains that are outliers for geometric or electron-density-fit criteria:

Mol	Type	Chain	Res	Chirality	Geometry	Clashes	Electron density
3	1PE	B	1353	-	-	X	-
4	CIT	A	1355	-	-	X	-
4	CIT	A	1356	-	X	-	-

2 Entry composition i

There are 7 unique types of molecules in this entry. The entry contains 11835 atoms, of which 0 are hydrogens and 0 are deuteriums.

In the tables below, the ZeroOcc column contains the number of atoms modelled with zero occupancy, the AltConf column contains the number of residues with at least one atom in alternate conformation and the Trace column contains the number of residues modelled with at most 2 atoms.

- Molecule 1 is a protein called 3-DEOXY-D-MANNO-2-OCTULOSONIC ACID TRANSFERASE.

Mol	Chain	Residues	Atoms					ZeroOcc	AltConf	Trace
			Total	C	N	O	S			
1	A	353	Total 2877	C 1893	N 478	O 498	S 8	0	0	0
1	B	352	Total 2867	C 1887	N 475	O 497	S 8	0	0	0
1	C	353	Total 2877	C 1893	N 478	O 498	S 8	0	0	0
1	D	352	Total 2867	C 1887	N 475	O 497	S 8	0	0	0

There are 84 discrepancies between the modelled and reference sequences:

Chain	Residue	Modelled	Actual	Comment	Reference
A	-20	MET	-	expression tag	UNP O66663
A	-19	GLY	-	expression tag	UNP O66663
A	-18	HIS	-	expression tag	UNP O66663
A	-17	HIS	-	expression tag	UNP O66663
A	-16	HIS	-	expression tag	UNP O66663
A	-15	HIS	-	expression tag	UNP O66663
A	-14	HIS	-	expression tag	UNP O66663
A	-13	HIS	-	expression tag	UNP O66663
A	-12	HIS	-	expression tag	UNP O66663
A	-11	HIS	-	expression tag	UNP O66663
A	-10	HIS	-	expression tag	UNP O66663
A	-9	HIS	-	expression tag	UNP O66663
A	-8	SER	-	expression tag	UNP O66663
A	-7	SER	-	expression tag	UNP O66663
A	-6	GLY	-	expression tag	UNP O66663
A	-5	HIS	-	expression tag	UNP O66663
A	-4	ILE	-	expression tag	UNP O66663
A	-3	GLU	-	expression tag	UNP O66663
A	-2	GLY	-	expression tag	UNP O66663
A	-1	ARG	-	expression tag	UNP O66663

Continued on next page...

Continued from previous page...

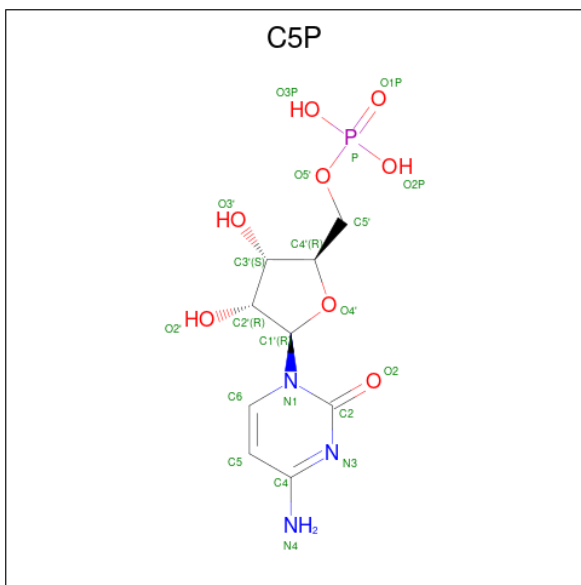
Chain	Residue	Modelled	Actual	Comment	Reference
A	0	HIS	-	expression tag	UNP O66663
B	-20	MET	-	expression tag	UNP O66663
B	-19	GLY	-	expression tag	UNP O66663
B	-18	HIS	-	expression tag	UNP O66663
B	-17	HIS	-	expression tag	UNP O66663
B	-16	HIS	-	expression tag	UNP O66663
B	-15	HIS	-	expression tag	UNP O66663
B	-14	HIS	-	expression tag	UNP O66663
B	-13	HIS	-	expression tag	UNP O66663
B	-12	HIS	-	expression tag	UNP O66663
B	-11	HIS	-	expression tag	UNP O66663
B	-10	HIS	-	expression tag	UNP O66663
B	-9	HIS	-	expression tag	UNP O66663
B	-8	SER	-	expression tag	UNP O66663
B	-7	SER	-	expression tag	UNP O66663
B	-6	GLY	-	expression tag	UNP O66663
B	-5	HIS	-	expression tag	UNP O66663
B	-4	ILE	-	expression tag	UNP O66663
B	-3	GLU	-	expression tag	UNP O66663
B	-2	GLY	-	expression tag	UNP O66663
B	-1	ARG	-	expression tag	UNP O66663
B	0	HIS	-	expression tag	UNP O66663
C	-20	MET	-	expression tag	UNP O66663
C	-19	GLY	-	expression tag	UNP O66663
C	-18	HIS	-	expression tag	UNP O66663
C	-17	HIS	-	expression tag	UNP O66663
C	-16	HIS	-	expression tag	UNP O66663
C	-15	HIS	-	expression tag	UNP O66663
C	-14	HIS	-	expression tag	UNP O66663
C	-13	HIS	-	expression tag	UNP O66663
C	-12	HIS	-	expression tag	UNP O66663
C	-11	HIS	-	expression tag	UNP O66663
C	-10	HIS	-	expression tag	UNP O66663
C	-9	HIS	-	expression tag	UNP O66663
C	-8	SER	-	expression tag	UNP O66663
C	-7	SER	-	expression tag	UNP O66663
C	-6	GLY	-	expression tag	UNP O66663
C	-5	HIS	-	expression tag	UNP O66663
C	-4	ILE	-	expression tag	UNP O66663
C	-3	GLU	-	expression tag	UNP O66663
C	-2	GLY	-	expression tag	UNP O66663
C	-1	ARG	-	expression tag	UNP O66663

Continued on next page...

Continued from previous page...

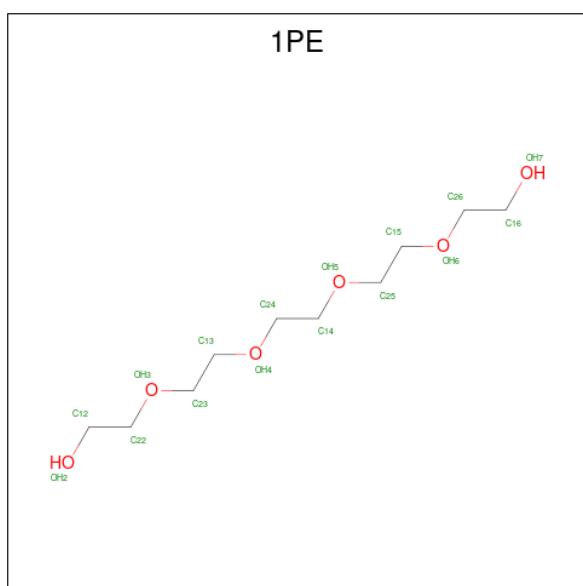
Chain	Residue	Modelled	Actual	Comment	Reference
C	0	HIS	-	expression tag	UNP O66663
D	-20	MET	-	expression tag	UNP O66663
D	-19	GLY	-	expression tag	UNP O66663
D	-18	HIS	-	expression tag	UNP O66663
D	-17	HIS	-	expression tag	UNP O66663
D	-16	HIS	-	expression tag	UNP O66663
D	-15	HIS	-	expression tag	UNP O66663
D	-14	HIS	-	expression tag	UNP O66663
D	-13	HIS	-	expression tag	UNP O66663
D	-12	HIS	-	expression tag	UNP O66663
D	-11	HIS	-	expression tag	UNP O66663
D	-10	HIS	-	expression tag	UNP O66663
D	-9	HIS	-	expression tag	UNP O66663
D	-8	SER	-	expression tag	UNP O66663
D	-7	SER	-	expression tag	UNP O66663
D	-6	GLY	-	expression tag	UNP O66663
D	-5	HIS	-	expression tag	UNP O66663
D	-4	ILE	-	expression tag	UNP O66663
D	-3	GLU	-	expression tag	UNP O66663
D	-2	GLY	-	expression tag	UNP O66663
D	-1	ARG	-	expression tag	UNP O66663
D	0	HIS	-	expression tag	UNP O66663

- Molecule 2 is CYTIDINE-5'-MONOPHOSPHATE (three-letter code: C5P) (formula: $C_9H_{14}N_3O_8P$).



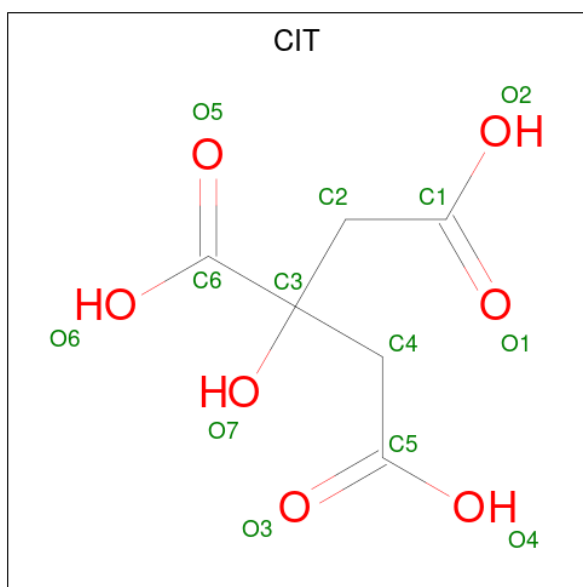
Mol	Chain	Residues	Atoms					ZeroOcc	AltConf
2	A	1	Total	C	N	O	P	0	0
			21	9	3	8	1		
2	B	1	Total	C	N	O	P	0	0
			21	9	3	8	1		
2	C	1	Total	C	N	O	P	0	0
			21	9	3	8	1		
2	D	1	Total	C	N	O	P	0	0
			21	9	3	8	1		

- Molecule 3 is PENTAETHYLENE GLYCOL (three-letter code: 1PE) (formula: C₁₀H₂₂O₆).



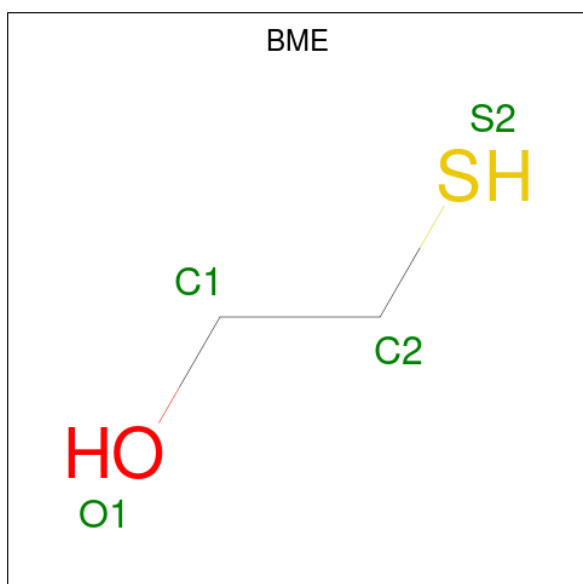
Mol	Chain	Residues	Atoms		ZeroOcc	AltConf
3	A	1	Total	C O	0	0
			16	10 6		
3	A	1	Total	C O	0	0
			16	10 6		
3	B	1	Total	C O	0	0
			16	10 6		
3	D	1	Total	C O	0	0
			16	10 6		

- Molecule 4 is CITRIC ACID (three-letter code: CIT) (formula: C₆H₈O₇).



Mol	Chain	Residues	Atoms			ZeroOcc	AltConf
4	A	1	Total	C	O	0	0
			13	6	7		
4	A	1	Total	C	O	0	0
			13	6	7		
4	B	1	Total	C	O	0	0
			13	6	7		
4	C	1	Total	C	O	0	0
			13	6	7		
4	D	1	Total	C	O	0	0
			13	6	7		

- Molecule 5 is BETA-MERCAPTOETHANOL (three-letter code: BME) (formula: C_2H_6OS).



Mol	Chain	Residues	Atoms				ZeroOcc	AltConf
5	B	1	Total	C	O	S	0	0
			4	2	1	1		
5	C	1	Total	C	O	S	0	0
			4	2	1	1		
5	C	1	Total	C	O	S	0	0
			4	2	1	1		
5	D	1	Total	C	O	S	0	0
			4	2	1	1		

- Molecule 6 is CHLORIDE ION (three-letter code: CL) (formula: Cl).

Mol	Chain	Residues	Atoms		ZeroOcc	AltConf
6	B	1	Total	Cl	0	0
			1	1		

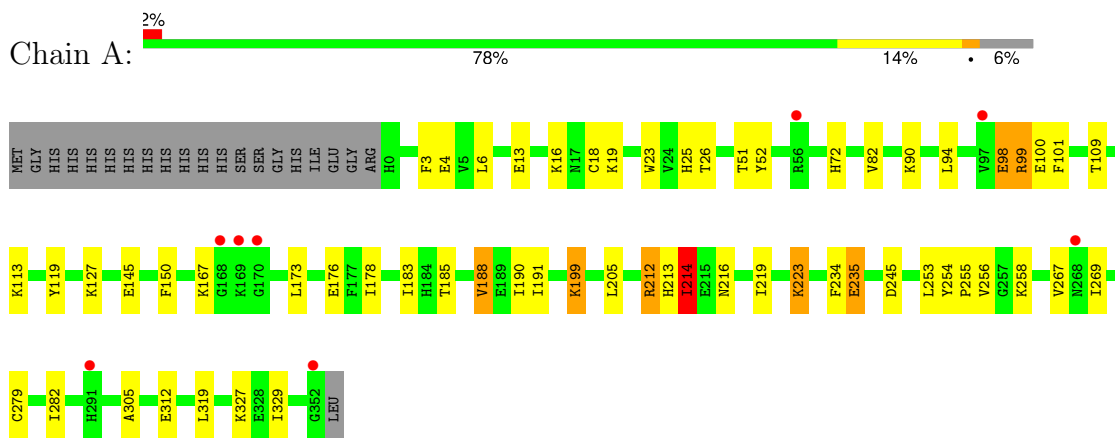
- Molecule 7 is water.

Mol	Chain	Residues	Atoms		ZeroOcc	AltConf
7	A	34	Total	O	0	0
			34	34		
7	B	29	Total	O	0	0
			29	29		
7	C	27	Total	O	0	0
			27	27		
7	D	27	Total	O	0	0
			27	27		

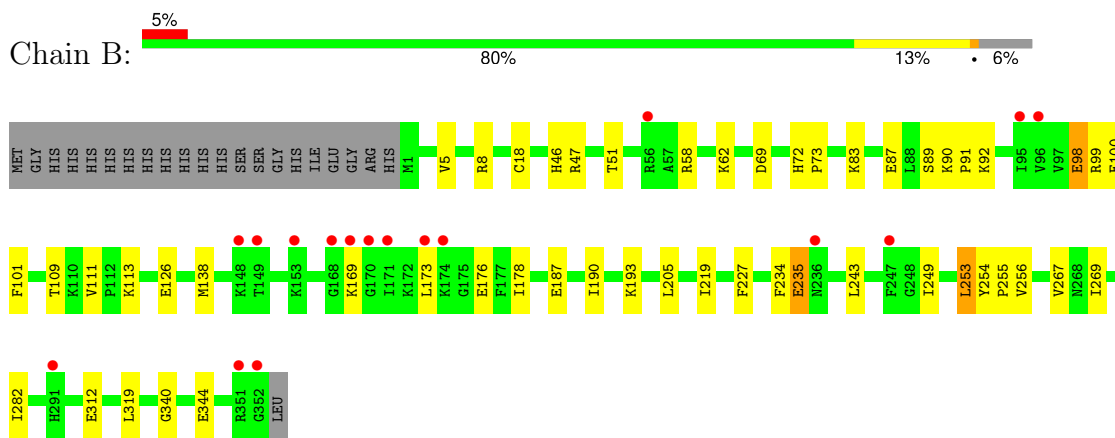
3 Residue-property plots

These plots are drawn for all protein, RNA, DNA and oligosaccharide chains in the entry. The first graphic for a chain summarises the proportions of the various outlier classes displayed in the second graphic. The second graphic shows the sequence view annotated by issues in geometry and electron density. Residues are color-coded according to the number of geometric quality criteria for which they contain at least one outlier: green = 0, yellow = 1, orange = 2 and red = 3 or more. A red dot above a residue indicates a poor fit to the electron density ($RSRZ > 2$). Stretches of 2 or more consecutive residues without any outlier are shown as a green connector. Residues present in the sample, but not in the model, are shown in grey.

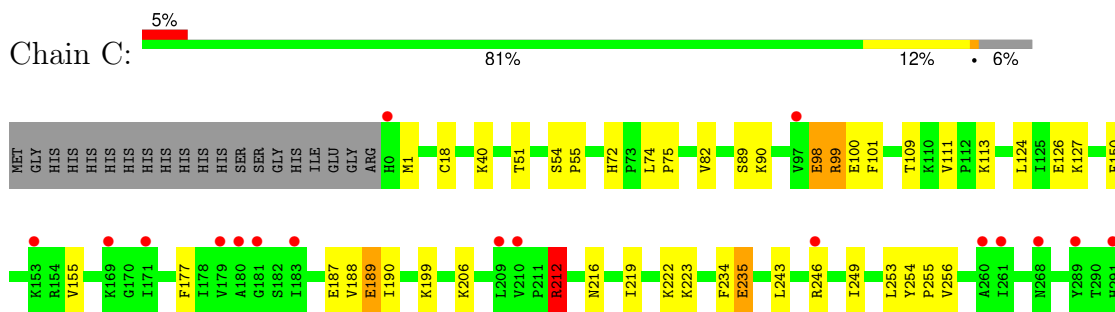
- Molecule 1: 3-DEOXY-D-MANNO-2-OCTULOSONIC ACID TRANSFERASE



- Molecule 1: 3-DEOXY-D-MANNO-2-OCTULOSONIC ACID TRANSFERASE



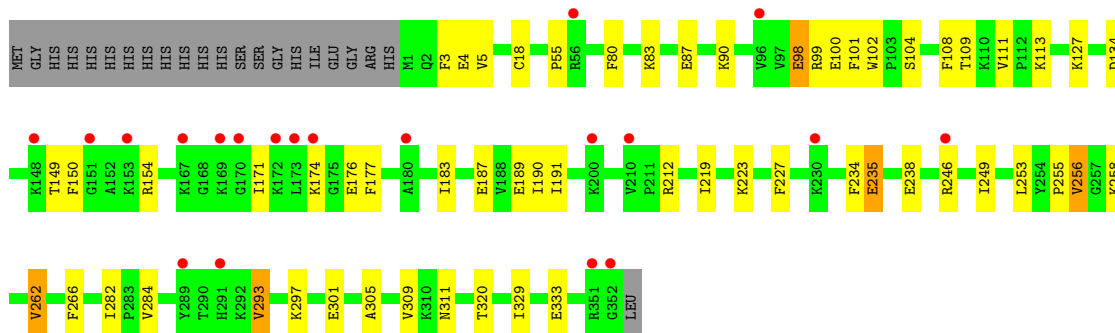
- Molecule 1: 3-DEOXY-D-MANNO-2-OCTULOSONIC ACID TRANSFERASE





● Molecule 1: 3-DEOXY-D-MANNO-2-OCTULOSONIC ACID TRANSFERASE

Chain D: 5% 78% 14% 6%



4 Data and refinement statistics

Property	Value	Source
Space group	P 1 21 1	Depositor
Cell constants a, b, c, α , β , γ	131.77Å 44.67Å 143.64Å 90.00° 97.15° 90.00°	Depositor
Resolution (Å)	31.22 – 2.42 31.06 – 2.42	Depositor EDS
% Data completeness (in resolution range)	97.2 (31.22-2.42) 97.2 (31.06-2.42)	Depositor EDS
R_{merge}	0.04	Depositor
R_{sym}	(Not available)	Depositor
$\langle I/\sigma(I) \rangle$ ¹	3.93 (at 2.42Å)	Xtrriage
Refinement program	REFMAC 5.5.0072	Depositor
R, R_{free}	0.202 , 0.251 0.200 , 0.248	Depositor DCC
R_{free} test set	3139 reflections (5.00%)	wwPDB-VP
Wilson B-factor (Å ²)	41.6	Xtrriage
Anisotropy	0.076	Xtrriage
Bulk solvent k_{sol} (e/Å ³), B_{sol} (Å ²)	0.36 , 54.1	EDS
L-test for twinning ²	$\langle L \rangle = 0.49$, $\langle L^2 \rangle = 0.33$	Xtrriage
Estimated twinning fraction	No twinning to report.	Xtrriage
F_o, F_c correlation	0.94	EDS
Total number of atoms	11835	wwPDB-VP
Average B, all atoms (Å ²)	45.0	wwPDB-VP

Xtrriage's analysis on translational NCS is as follows: *The largest off-origin peak in the Patterson function is 6.22% of the height of the origin peak. No significant pseudotranslation is detected.*

¹Intensities estimated from amplitudes.

²Theoretical values of $\langle |L| \rangle$, $\langle L^2 \rangle$ for acentric reflections are 0.5, 0.333 respectively for untwinned datasets, and 0.375, 0.2 for perfectly twinned datasets.

5 Model quality [i](#)

5.1 Standard geometry [i](#)

Bond lengths and bond angles in the following residue types are not validated in this section: 1PE, C5P, BME, CL, CIT

The Z score for a bond length (or angle) is the number of standard deviations the observed value is removed from the expected value. A bond length (or angle) with $|Z| > 5$ is considered an outlier worth inspection. RMSZ is the root-mean-square of all Z scores of the bond lengths (or angles).

Mol	Chain	Bond lengths		Bond angles	
		RMSZ	# Z >5	RMSZ	# Z >5
1	A	0.72	0/2941	0.75	0/3946
1	B	0.70	0/2930	0.72	0/3931
1	C	0.68	0/2941	0.72	2/3946 (0.1%)
1	D	0.69	0/2930	0.73	0/3931
All	All	0.70	0/11742	0.73	2/15754 (0.0%)

There are no bond length outliers.

All (2) bond angle outliers are listed below:

Mol	Chain	Res	Type	Atoms	Z	Observed(°)	Ideal(°)
1	C	212	ARG	NE-CZ-NH1	-6.92	116.84	120.30
1	C	212	ARG	NE-CZ-NH2	6.28	123.44	120.30

There are no chirality outliers.

There are no planarity outliers.

5.2 Too-close contacts [i](#)

In the following table, the Non-H and H(model) columns list the number of non-hydrogen atoms and hydrogen atoms in the chain respectively. The H(added) column lists the number of hydrogen atoms added and optimized by MolProbity. The Clashes column lists the number of clashes within the asymmetric unit, whereas Symm-Clashes lists symmetry-related clashes.

Mol	Chain	Non-H	H(model)	H(added)	Clashes	Symm-Clashes
1	A	2877	0	3015	50	0
1	B	2867	0	3008	33	0
1	C	2877	0	3015	29	0
1	D	2867	0	3008	40	0
2	A	21	0	12	0	0

Continued on next page...

Continued from previous page...

Mol	Chain	Non-H	H(model)	H(added)	Clashes	Symm-Clashes
2	B	21	0	12	0	0
2	C	21	0	12	1	0
2	D	21	0	12	0	0
3	A	32	0	44	9	0
3	B	16	0	22	8	0
3	D	16	0	22	6	0
4	A	26	0	10	13	0
4	B	13	0	5	2	0
4	C	13	0	5	0	0
4	D	13	0	5	3	0
5	B	4	0	6	0	0
5	C	8	0	12	0	0
5	D	4	0	6	1	0
6	B	1	0	0	0	0
7	A	34	0	0	1	0
7	B	29	0	0	0	0
7	C	27	0	0	0	0
7	D	27	0	0	0	0
All	All	11835	0	12231	157	0

The all-atom clashscore is defined as the number of clashes found per 1000 atoms (including hydrogen atoms). The all-atom clashscore for this structure is 7.

All (157) close contacts within the same asymmetric unit are listed below, sorted by their clash magnitude.

Atom-1	Atom-2	Interatomic distance (Å)	Clash overlap (Å)
1:A:216:ASN:HD21	4:A:1355:CIT:H22	1.23	0.99
4:B:1354:CIT:O2	4:B:1354:CIT:H42	1.61	0.97
1:A:216:ASN:HD21	4:A:1355:CIT:C2	1.90	0.83
1:D:219:ILE:HD12	1:D:219:ILE:H	1.43	0.81
1:A:216:ASN:ND2	4:A:1355:CIT:H22	1.95	0.81
1:A:101:PHE:HB2	3:A:1354:1PE:H162	1.67	0.77
1:B:255:PRO:HA	1:B:282:ILE:CD1	2.21	0.70
3:B:1353:1PE:H222	1:D:55:PRO:HD3	1.73	0.69
1:D:262:VAL:HG22	1:D:284:VAL:CG2	2.21	0.69
1:C:343:LEU:O	1:C:347:ARG:HG3	1.93	0.69
1:A:99:ARG:HE	3:A:1354:1PE:H161	1.58	0.68
1:A:213:HIS:ND1	4:A:1355:CIT:O4	2.24	0.66
1:D:187:GLU:HG2	1:D:266:PHE:HB2	1.80	0.64
3:B:1353:1PE:H222	1:D:55:PRO:CD	2.28	0.64
1:A:173:LEU:HD12	1:A:256:VAL:HG11	1.80	0.63

Continued on next page...

Continued from previous page...

Atom-1	Atom-2	Interatomic distance (Å)	Clash overlap (Å)
1:B:190:ILE:HG13	1:B:312:GLU:HB2	1.80	0.63
1:D:111:VAL:O	1:D:113:LYS:HE3	1.98	0.63
1:A:190:ILE:HG13	1:A:312:GLU:HB2	1.79	0.63
1:B:176:GLU:HG3	1:B:205:LEU:HD23	1.82	0.62
1:C:101:PHE:HE1	1:C:126:GLU:HG2	1.64	0.61
1:C:305:ALA:HB2	1:C:329:ILE:HG23	1.84	0.60
1:C:99:ARG:O	1:C:100:GLU:C	2.38	0.60
1:C:187:GLU:O	1:C:190:ILE:HG22	2.02	0.60
1:D:100:GLU:HA	3:D:1353:1PE:C25	2.32	0.60
1:A:99:ARG:NE	3:A:1354:1PE:H161	2.16	0.60
1:B:340:GLY:O	1:B:344:GLU:HB2	2.02	0.59
1:D:171:ILE:O	1:D:256:VAL:HG23	2.01	0.59
1:D:223:LYS:O	1:D:227:PHE:HD2	1.84	0.59
1:A:13:GLU:O	1:A:16:LYS:HB2	2.03	0.59
1:D:80:PHE:HB3	5:D:1355:BME:H22	1.85	0.58
1:A:99:ARG:O	1:A:100:GLU:C	2.40	0.58
1:A:176:GLU:HG3	1:A:258:LYS:HE3	1.85	0.58
1:A:109:THR:OG1	1:A:113:LYS:HE3	2.03	0.58
1:A:25:HIS:CD2	1:A:100:GLU:HG3	2.39	0.57
1:A:185:THR:H	4:A:1355:CIT:C4	2.18	0.57
4:B:1354:CIT:O2	4:B:1354:CIT:C4	2.43	0.56
1:A:219:ILE:HD12	1:A:219:ILE:H	1.70	0.56
1:A:167:LYS:HD3	1:A:279:CYS:O	2.07	0.55
1:B:100:GLU:HA	3:B:1353:1PE:H152	1.87	0.55
1:A:212:ARG:HB3	4:A:1355:CIT:O4	2.06	0.55
1:C:189:GLU:OE2	1:C:223:LYS:HE2	2.07	0.54
1:D:234:PHE:O	1:D:235:GLU:HB2	2.07	0.54
1:A:6:LEU:HD21	1:C:124:LEU:HD23	1.90	0.54
1:B:100:GLU:HA	3:B:1353:1PE:C25	2.37	0.54
1:B:173:LEU:HD12	1:B:256:VAL:HG11	1.90	0.54
1:D:219:ILE:HD12	1:D:219:ILE:N	2.20	0.54
1:C:219:ILE:H	1:C:219:ILE:HD12	1.72	0.53
1:A:82:VAL:HG13	1:A:109:THR:HG23	1.90	0.53
1:C:254:TYR:N	1:C:255:PRO:HD2	2.22	0.53
1:D:262:VAL:HG22	1:D:284:VAL:HG21	1.89	0.53
1:D:234:PHE:CG	1:D:235:GLU:N	2.77	0.53
1:A:51:THR:HA	1:A:72:HIS:O	2.09	0.53
1:B:219:ILE:H	1:B:219:ILE:HD12	1.74	0.53
1:D:219:ILE:H	1:D:219:ILE:CD1	2.17	0.52
1:A:199:LYS:HE3	1:A:205:LEU:O	2.09	0.52
1:A:234:PHE:CG	1:A:235:GLU:N	2.77	0.52

Continued on next page...

Continued from previous page...

Atom-1	Atom-2	Interatomic distance (Å)	Clash overlap (Å)
1:A:19:LYS:HG3	1:A:90:LYS:HB2	1.92	0.51
3:A:1353:1PE:H222	1:C:99:ARG:HG2	1.92	0.51
3:A:1353:1PE:H221	1:C:101:PHE:HB2	1.92	0.51
1:D:246:ARG:HB3	1:D:249:ILE:HD12	1.92	0.51
1:D:187:GLU:O	1:D:190:ILE:HG22	2.11	0.51
1:D:305:ALA:HA	1:D:329:ILE:HD12	1.93	0.50
1:A:23:TRP:CD2	1:A:94:LEU:HD13	2.46	0.50
4:A:1356:CIT:O2	4:A:1356:CIT:H42	2.11	0.50
7:A:2022:HOH:O	1:C:222:LYS:HD3	2.11	0.50
1:B:89:SER:O	1:B:90:LYS:C	2.50	0.49
1:C:246:ARG:HB3	1:C:249:ILE:HD12	1.94	0.49
1:A:100:GLU:HA	1:A:100:GLU:OE2	2.12	0.49
1:A:185:THR:H	4:A:1355:CIT:H41	1.76	0.49
1:C:109:THR:OG1	1:C:113:LYS:HE3	2.11	0.49
1:B:100:GLU:HA	3:B:1353:1PE:H252	1.93	0.49
1:D:262:VAL:CG2	1:D:284:VAL:HG21	2.43	0.48
1:A:127:LYS:HG2	1:A:150:PHE:CE1	2.47	0.48
1:B:8:ARG:HG2	1:B:73:PRO:HB2	1.95	0.48
1:A:267:VAL:HG23	1:A:269:ILE:HG12	1.96	0.48
4:A:1355:CIT:O5	1:C:216:ASN:ND2	2.37	0.48
1:D:127:LYS:HG2	1:D:150:PHE:CE1	2.48	0.48
1:A:216:ASN:ND2	4:A:1355:CIT:C2	2.66	0.47
1:B:253:LEU:O	1:B:256:VAL:HB	2.14	0.47
1:D:293:VAL:HG13	1:D:293:VAL:O	2.14	0.47
1:A:3:PHE:HB2	3:A:1353:1PE:H122	1.96	0.47
1:D:249:ILE:HG22	1:D:253:LEU:HD22	1.97	0.47
1:B:5:VAL:HG21	3:D:1353:1PE:H161	1.97	0.47
1:D:4:GLU:N	4:D:1354:CIT:H21	2.30	0.47
1:B:46:HIS:ND1	1:B:92:LYS:NZ	2.62	0.47
1:C:82:VAL:CG1	1:C:109:THR:HG23	2.45	0.47
1:D:183:ILE:HD12	1:D:191:ILE:CD1	2.45	0.47
1:B:267:VAL:HG23	1:B:269:ILE:HG12	1.97	0.47
1:A:190:ILE:HD11	1:A:312:GLU:N	2.30	0.47
1:A:254:TYR:N	1:A:255:PRO:HD2	2.30	0.46
1:C:82:VAL:HG13	1:C:109:THR:HG23	1.97	0.46
1:A:223:LYS:HD3	1:A:223:LYS:HA	1.72	0.46
1:D:5:VAL:H	4:D:1354:CIT:H21	1.81	0.46
1:B:234:PHE:CG	1:B:235:GLU:N	2.83	0.46
1:A:4:GLU:HA	4:A:1356:CIT:C6	2.46	0.46
1:C:234:PHE:CG	1:C:235:GLU:N	2.84	0.46
1:A:185:THR:H	4:A:1355:CIT:H42	1.80	0.46

Continued on next page...

Continued from previous page...

Atom-1	Atom-2	Interatomic distance (Å)	Clash overlap (Å)
1:B:101:PHE:HE1	1:B:126:GLU:HG2	1.81	0.46
1:B:47:ARG:HA	1:B:69:ASP:OD2	2.15	0.46
1:B:178:ILE:HD13	1:B:319:LEU:HD22	1.98	0.46
1:D:83:LYS:O	1:D:87:GLU:HB2	2.16	0.46
3:B:1353:1PE:H162	1:D:3:PHE:HB2	1.98	0.45
1:C:177:PHE:CD2	1:C:256:VAL:HG13	2.51	0.45
1:D:253:LEU:O	1:D:256:VAL:HB	2.17	0.45
1:A:185:THR:O	1:A:188:VAL:HG23	2.17	0.45
1:C:127:LYS:HG2	1:C:150:PHE:CE1	2.52	0.45
1:A:176:GLU:HG2	1:A:205:LEU:HD23	1.99	0.45
1:A:119:TYR:N	1:A:119:TYR:CD2	2.83	0.45
1:B:100:GLU:HA	3:B:1353:1PE:C15	2.46	0.44
1:B:254:TYR:N	1:B:255:PRO:HD2	2.32	0.44
1:C:109:THR:HB	1:C:111:VAL:HG12	1.98	0.44
1:A:305:ALA:HA	1:A:329:ILE:HD12	2.00	0.44
1:D:109:THR:OG1	1:D:113:LYS:HE2	2.18	0.44
1:A:3:PHE:HB2	3:A:1353:1PE:C12	2.48	0.43
1:B:58:ARG:NH1	1:B:62:LYS:NZ	2.65	0.43
1:A:183:ILE:HD12	1:A:191:ILE:CD1	2.48	0.43
1:C:212:ARG:HH12	2:C:400:C5P:P	2.41	0.43
1:A:253:LEU:O	1:A:256:VAL:HB	2.18	0.43
1:C:54:SER:HA	1:C:55:PRO:HD3	1.94	0.43
1:B:109:THR:OG1	1:B:113:LYS:HE3	2.19	0.43
1:D:255:PRO:HA	1:D:282:ILE:CD1	2.48	0.43
1:A:26:THR:O	1:A:52:TYR:HA	2.18	0.43
1:B:193:LYS:HG3	1:B:227:PHE:HE1	1.84	0.43
1:B:234:PHE:O	1:B:235:GLU:HB2	2.18	0.43
1:C:51:THR:HA	1:C:72:HIS:O	2.19	0.42
1:D:100:GLU:HA	3:D:1353:1PE:H252	2.00	0.42
1:D:297:LYS:HE2	1:D:301:GLU:OE2	2.19	0.42
3:B:1353:1PE:H232	3:B:1353:1PE:H142	2.01	0.42
1:B:51:THR:HA	1:B:72:HIS:O	2.19	0.42
1:B:219:ILE:HD12	1:B:219:ILE:N	2.34	0.42
1:B:255:PRO:HA	1:B:282:ILE:HD11	1.97	0.42
1:B:91:PRO:HG2	1:B:111:VAL:HG21	2.01	0.42
1:A:214:ILE:HD12	1:A:245:ASP:C	2.40	0.41
1:C:177:PHE:HA	1:C:206:LYS:O	2.20	0.41
1:D:101:PHE:N	3:D:1353:1PE:H252	2.35	0.41
1:B:193:LYS:HG3	1:B:227:PHE:CE1	2.55	0.41
1:D:102:TRP:CE2	3:D:1353:1PE:H141	2.55	0.41
1:D:253:LEU:C	1:D:255:PRO:HD2	2.40	0.41

Continued on next page...

Continued from previous page...

Atom-1	Atom-2	Interatomic distance (Å)	Clash overlap (Å)
1:B:5:VAL:CG2	3:D:1353:1PE:H161	2.50	0.41
1:A:305:ALA:CB	1:A:329:ILE:HD12	2.51	0.41
1:C:253:LEU:C	1:C:255:PRO:HD2	2.41	0.41
1:D:177:PHE:CD2	1:D:256:VAL:HG13	2.55	0.41
1:A:3:PHE:CB	3:A:1353:1PE:H122	2.50	0.41
1:A:178:ILE:HD13	1:A:319:LEU:HD22	2.02	0.41
1:B:187:GLU:O	1:B:190:ILE:HG22	2.20	0.41
3:A:1353:1PE:H232	1:C:101:PHE:N	2.35	0.41
1:B:83:LYS:O	1:B:87:GLU:HB2	2.20	0.41
1:C:74:LEU:HD12	1:C:75:PRO:HD2	2.02	0.41
1:D:176:GLU:HG2	1:D:258:LYS:HE3	2.02	0.41
1:D:134:ASP:O	1:D:154:ARG:HB2	2.21	0.41
1:D:190:ILE:HD11	1:D:311:ASN:C	2.41	0.41
1:A:255:PRO:HA	1:A:282:ILE:CD1	2.51	0.40
4:D:1354:CIT:O4	4:D:1354:CIT:O7	2.38	0.40
1:A:23:TRP:O	1:A:94:LEU:HA	2.22	0.40
4:A:1356:CIT:O2	4:A:1356:CIT:C4	2.70	0.40
1:C:89:SER:O	1:C:90:LYS:C	2.60	0.40
1:D:104:SER:O	1:D:108:PHE:HB2	2.21	0.40

There are no symmetry-related clashes.

5.3 Torsion angles [i](#)

5.3.1 Protein backbone [i](#)

In the following table, the Percentiles column shows the percent Ramachandran outliers of the chain as a percentile score with respect to all X-ray entries followed by that with respect to entries of similar resolution.

The Analysed column shows the number of residues for which the backbone conformation was analysed, and the total number of residues.

Mol	Chain	Analysed	Favoured	Allowed	Outliers	Percentiles
1	A	351/374 (94%)	336 (96%)	11 (3%)	4 (1%)	14 19
1	B	350/374 (94%)	334 (95%)	12 (3%)	4 (1%)	14 19
1	C	351/374 (94%)	333 (95%)	15 (4%)	3 (1%)	17 24
1	D	350/374 (94%)	337 (96%)	9 (3%)	4 (1%)	14 19
All	All	1402/1496 (94%)	1340 (96%)	47 (3%)	15 (1%)	14 19

All (15) Ramachandran outliers are listed below:

Mol	Chain	Res	Type
1	A	214	ILE
1	B	235	GLU
1	A	98	GLU
1	A	235	GLU
1	B	98	GLU
1	C	99	ARG
1	C	235	GLU
1	D	99	ARG
1	D	149	THR
1	D	235	GLU
1	B	99	ARG
1	B	169	LYS
1	C	98	GLU
1	A	99	ARG
1	D	98	GLU

5.3.2 Protein sidechains [i](#)

In the following table, the Percentiles column shows the percent sidechain outliers of the chain as a percentile score with respect to all X-ray entries followed by that with respect to entries of similar resolution.

The Analysed column shows the number of residues for which the sidechain conformation was analysed, and the total number of residues.

Mol	Chain	Analysed	Rotameric	Outliers	Percentiles	
1	A	316/334 (95%)	307 (97%)	9 (3%)	43	62
1	B	315/334 (94%)	309 (98%)	6 (2%)	57	74
1	C	316/334 (95%)	304 (96%)	12 (4%)	33	50
1	D	315/334 (94%)	302 (96%)	13 (4%)	30	47
All	All	1262/1336 (94%)	1222 (97%)	40 (3%)	39	57

All (40) residues with a non-rotameric sidechain are listed below:

Mol	Chain	Res	Type
1	A	18	CYS
1	A	98	GLU
1	A	145	GLU
1	A	188	VAL
1	A	199	LYS

Continued on next page...

Continued from previous page...

Mol	Chain	Res	Type
1	A	212	ARG
1	A	214	ILE
1	A	223	LYS
1	A	327	LYS
1	B	18	CYS
1	B	98	GLU
1	B	138	MET
1	B	243	LEU
1	B	249	ILE
1	B	253	LEU
1	C	1	MET
1	C	18	CYS
1	C	40	LYS
1	C	98	GLU
1	C	155	VAL
1	C	188	VAL
1	C	189	GLU
1	C	199	LYS
1	C	212	ARG
1	C	243	LEU
1	C	327	LYS
1	C	333	GLU
1	D	18	CYS
1	D	90	LYS
1	D	98	GLU
1	D	174	LYS
1	D	189	GLU
1	D	212	ARG
1	D	238	GLU
1	D	256	VAL
1	D	262	VAL
1	D	293	VAL
1	D	309	VAL
1	D	320	THR
1	D	333	GLU

Sometimes sidechains can be flipped to improve hydrogen bonding and reduce clashes. All (6) such sidechains are listed below:

Mol	Chain	Res	Type
1	A	2	GLN
1	A	216	ASN
1	B	141	GLN

Continued on next page...

Continued from previous page...

Mol	Chain	Res	Type
1	B	216	ASN
1	C	2	GLN
1	D	216	ASN

5.3.3 RNA [i](#)

There are no RNA molecules in this entry.

5.4 Non-standard residues in protein, DNA, RNA chains [i](#)

There are no non-standard protein/DNA/RNA residues in this entry.

5.5 Carbohydrates [i](#)

There are no monosaccharides in this entry.

5.6 Ligand geometry [i](#)

Of 18 ligands modelled in this entry, 1 is monoatomic - leaving 17 for Mogul analysis.

In the following table, the Counts columns list the number of bonds (or angles) for which Mogul statistics could be retrieved, the number of bonds (or angles) that are observed in the model and the number of bonds (or angles) that are defined in the Chemical Component Dictionary. The Link column lists molecule types, if any, to which the group is linked. The Z score for a bond length (or angle) is the number of standard deviations the observed value is removed from the expected value. A bond length (or angle) with $|Z| > 2$ is considered an outlier worth inspection. RMSZ is the root-mean-square of all Z scores of the bond lengths (or angles).

Mol	Type	Chain	Res	Link	Bond lengths			Bond angles		
					Counts	RMSZ	# Z > 2	Counts	RMSZ	# Z > 2
3	1PE	A	1354	-	15,15,15	0.83	0	14,14,14	1.22	2 (14%)
4	CIT	A	1355	-	12,12,12	1.16	0	17,17,17	1.48	2 (11%)
4	CIT	B	1354	-	12,12,12	1.67	1 (8%)	17,17,17	2.33	6 (35%)
5	BME	B	1355	-	3,3,3	0.26	0	2,2,2	0.31	0
4	CIT	D	1354	-	12,12,12	1.30	1 (8%)	17,17,17	2.11	8 (47%)
3	1PE	A	1353	-	15,15,15	0.72	0	14,14,14	1.10	1 (7%)
4	CIT	A	1356	-	12,12,12	2.22	3 (25%)	17,17,17	3.77	10 (58%)
2	C5P	C	400	-	22,22,22	1.58	4 (18%)	32,33,33	0.98	2 (6%)
2	C5P	B	400	-	22,22,22	1.51	4 (18%)	32,33,33	0.95	1 (3%)

Mol	Type	Chain	Res	Link	Bond lengths			Bond angles		
					Counts	RMSZ	# Z > 2	Counts	RMSZ	# Z > 2
5	BME	C	1354	-	3,3,3	0.23	0	2,2,2	0.45	0
5	BME	C	1355	-	3,3,3	0.49	0	2,2,2	0.58	0
2	C5P	D	400	-	22,22,22	1.44	4 (18%)	32,33,33	0.92	3 (9%)
3	1PE	B	1353	-	15,15,15	0.59	0	14,14,14	1.10	1 (7%)
5	BME	D	1355	-	3,3,3	0.42	0	2,2,2	0.66	0
3	1PE	D	1353	-	15,15,15	0.51	0	14,14,14	0.97	1 (7%)
4	CIT	C	1353	-	12,12,12	1.32	0	17,17,17	1.55	3 (17%)
2	C5P	A	400	-	22,22,22	1.53	4 (18%)	32,33,33	1.46	7 (21%)

In the following table, the Chirals column lists the number of chiral outliers, the number of chiral centers analysed, the number of these observed in the model and the number defined in the Chemical Component Dictionary. Similar counts are reported in the Torsion and Rings columns. '-' means no outliers of that kind were identified.

Mol	Type	Chain	Res	Link	Chirals	Torsions	Rings
3	1PE	A	1354	-	-	8/13/13/13	-
4	CIT	A	1355	-	-	10/16/16/16	-
4	CIT	B	1354	-	-	6/16/16/16	-
5	BME	B	1355	-	-	1/1/1/1	-
4	CIT	D	1354	-	-	8/16/16/16	-
3	1PE	A	1353	-	-	9/13/13/13	-
4	CIT	A	1356	-	-	15/16/16/16	-
2	C5P	C	400	-	-	0/10/26/26	0/2/2/2
2	C5P	B	400	-	-	5/10/26/26	0/2/2/2
5	BME	C	1354	-	-	1/1/1/1	-
5	BME	C	1355	-	-	0/1/1/1	-
2	C5P	D	400	-	-	0/10/26/26	0/2/2/2
3	1PE	B	1353	-	-	6/13/13/13	-
5	BME	D	1355	-	-	1/1/1/1	-
3	1PE	D	1353	-	-	6/13/13/13	-
4	CIT	C	1353	-	-	7/16/16/16	-
2	C5P	A	400	-	-	0/10/26/26	0/2/2/2

All (21) bond length outliers are listed below:

Mol	Chain	Res	Type	Atoms	Z	Observed(Å)	Ideal(Å)
4	A	1356	CIT	C3-C6	6.49	1.60	1.53
4	B	1354	CIT	C3-C6	4.10	1.57	1.53
2	C	400	C5P	P-O5'	-3.93	1.47	1.60

Continued on next page...

Continued from previous page...

Mol	Chain	Res	Type	Atoms	Z	Observed(Å)	Ideal(Å)
2	B	400	C5P	P-O5'	-3.74	1.48	1.60
2	A	400	C5P	P-O5'	-3.67	1.48	1.60
2	D	400	C5P	C4-N3	3.67	1.41	1.34
2	B	400	C5P	C4-N3	3.23	1.41	1.34
2	C	400	C5P	O4'-C1'	3.11	1.49	1.42
2	A	400	C5P	O4'-C1'	2.90	1.48	1.42
2	B	400	C5P	O4'-C1'	2.88	1.48	1.42
4	D	1354	CIT	C2-C3	2.78	1.57	1.54
2	D	400	C5P	P-O5'	-2.69	1.51	1.60
2	D	400	C5P	C2-N3	2.50	1.41	1.36
2	C	400	C5P	C4-N3	2.47	1.39	1.34
4	A	1356	CIT	O7-C3	2.44	1.47	1.43
2	B	400	C5P	C6-C5	2.28	1.40	1.35
2	A	400	C5P	P-O1P	2.20	1.57	1.50
2	C	400	C5P	O5'-C5'	-2.14	1.36	1.44
2	D	400	C5P	C6-C5	2.10	1.40	1.35
4	A	1356	CIT	O5-C6	2.04	1.28	1.22
2	A	400	C5P	C4-N3	2.04	1.38	1.34

All (47) bond angle outliers are listed below:

Mol	Chain	Res	Type	Atoms	Z	Observed(°)	Ideal(°)
4	A	1356	CIT	O7-C3-C6	10.15	123.35	108.96
4	A	1356	CIT	O6-C6-C3	6.08	124.80	113.14
4	A	1356	CIT	O7-C3-C2	-5.58	96.66	109.38
4	B	1354	CIT	O7-C3-C6	5.51	116.78	108.96
4	D	1354	CIT	O6-C6-C3	4.47	121.72	113.14
4	B	1354	CIT	O6-C6-C3	4.25	121.30	113.14
4	C	1353	CIT	O6-C6-C3	4.02	120.85	113.14
4	A	1355	CIT	O6-C6-C3	3.92	120.66	113.14
4	A	1356	CIT	C4-C3-C6	-3.79	101.65	110.03
2	A	400	C5P	N4-C4-N3	-3.54	111.58	117.91
4	A	1356	CIT	O4-C5-C4	3.44	125.24	114.35
4	D	1354	CIT	O2-C1-C2	3.40	125.12	114.35
2	A	400	C5P	O2-C2-N3	-3.12	117.41	122.33
4	D	1354	CIT	O2-C1-O1	-3.11	115.33	123.33
4	A	1356	CIT	O3-C5-C4	-2.96	114.57	122.95
4	B	1354	CIT	O3-C5-C4	-2.81	115.00	122.95
4	B	1354	CIT	O2-C1-C2	2.66	122.77	114.35
4	A	1356	CIT	C4-C3-C2	2.63	116.06	109.31
4	D	1354	CIT	C4-C3-C2	2.56	115.88	109.31
4	A	1356	CIT	O2-C1-C2	2.53	122.35	114.35

Continued on next page...

Continued from previous page...

Mol	Chain	Res	Type	Atoms	Z	Observed(°)	Ideal(°)
2	C	400	C5P	C2'-C1'-N1	2.42	120.00	113.25
4	A	1355	CIT	O4-C5-O3	-2.40	117.17	123.33
3	D	1353	1PE	OH6-C26-C16	-2.39	99.58	110.11
2	A	400	C5P	O2'-C2'-C1'	-2.38	101.92	110.10
3	A	1354	1PE	OH3-C22-C12	-2.36	99.69	110.11
3	A	1354	1PE	OH7-C16-C26	2.36	125.72	111.82
2	C	400	C5P	O2-C2-N3	-2.28	118.73	122.33
3	A	1353	1PE	C24-OH4-C13	-2.27	103.34	113.26
4	D	1354	CIT	O4-C5-O3	-2.26	117.53	123.33
2	D	400	C5P	C6-C5-C4	2.26	121.23	117.53
4	C	1353	CIT	C3-C4-C5	2.23	120.01	113.92
2	B	400	C5P	C2'-C1'-N1	2.21	119.41	113.25
2	A	400	C5P	C2'-C1'-N1	2.19	119.36	113.25
2	D	400	C5P	N4-C4-N3	2.16	121.77	117.91
2	D	400	C5P	O2P-P-O5'	2.13	112.22	106.67
4	D	1354	CIT	O4-C5-C4	2.13	121.09	114.35
4	A	1356	CIT	O6-C6-O5	-2.12	117.08	123.86
4	C	1353	CIT	O5-C6-C3	-2.12	117.99	122.09
4	D	1354	CIT	O7-C3-C6	-2.11	105.96	108.96
2	A	400	C5P	C5-C4-N3	2.10	124.85	121.32
4	B	1354	CIT	O7-C3-C2	-2.09	104.62	109.38
4	B	1354	CIT	O6-C6-O5	-2.08	117.21	123.86
4	A	1356	CIT	O5-C6-C3	-2.07	118.09	122.09
4	D	1354	CIT	O5-C6-C3	-2.06	118.11	122.09
3	B	1353	1PE	OH7-C16-C26	2.04	123.82	111.82
2	A	400	C5P	O4'-C1'-N1	2.04	112.97	108.36
2	A	400	C5P	O2P-P-O5'	2.01	111.90	106.67

There are no chirality outliers.

All (83) torsion outliers are listed below:

Mol	Chain	Res	Type	Atoms
2	B	400	C5P	C5'-O5'-P-O3P
2	B	400	C5P	C5'-O5'-P-O1P
2	B	400	C5P	C5'-O5'-P-O2P
4	A	1355	CIT	O7-C3-C6-O5
4	A	1355	CIT	O7-C3-C6-O6
4	A	1356	CIT	C1-C2-C3-C4
4	A	1356	CIT	C1-C2-C3-C6
4	A	1356	CIT	O7-C3-C4-C5
4	A	1356	CIT	C6-C3-C4-C5
4	A	1356	CIT	C2-C3-C6-O5

Continued on next page...

Continued from previous page...

Mol	Chain	Res	Type	Atoms
4	A	1356	CIT	C2-C3-C6-O6
4	A	1356	CIT	O7-C3-C6-O5
4	A	1356	CIT	O7-C3-C6-O6
4	B	1354	CIT	C2-C3-C6-O5
4	B	1354	CIT	C2-C3-C6-O6
4	B	1354	CIT	O7-C3-C6-O5
4	B	1354	CIT	O7-C3-C6-O6
4	C	1353	CIT	C1-C2-C3-C4
4	C	1353	CIT	C2-C3-C6-O5
4	C	1353	CIT	C2-C3-C6-O6
4	C	1353	CIT	O7-C3-C6-O5
4	C	1353	CIT	O7-C3-C6-O6
4	D	1354	CIT	C1-C2-C3-C4
4	D	1354	CIT	C1-C2-C3-C6
4	D	1354	CIT	O7-C3-C4-C5
5	C	1354	BME	O1-C1-C2-S2
5	D	1355	BME	O1-C1-C2-S2
2	B	400	C5P	C3'-C4'-C5'-O5'
3	B	1353	1PE	C12-C22-OH3-C23
3	A	1353	1PE	OH5-C14-C24-OH4
4	A	1356	CIT	C2-C3-C4-C5
4	D	1354	CIT	C6-C3-C4-C5
3	A	1353	1PE	OH4-C13-C23-OH3
3	D	1353	1PE	OH4-C13-C23-OH3
2	B	400	C5P	O4'-C4'-C5'-O5'
4	A	1356	CIT	C1-C2-C3-O7
4	D	1354	CIT	C1-C2-C3-O7
3	B	1353	1PE	C15-C25-OH5-C14
3	A	1354	1PE	OH6-C15-C25-OH5
3	A	1354	1PE	OH7-C16-C26-OH6
3	A	1353	1PE	OH6-C15-C25-OH5
4	A	1355	CIT	C2-C3-C6-O5
4	A	1355	CIT	C2-C3-C6-O6
3	D	1353	1PE	OH2-C12-C22-OH3
4	C	1353	CIT	C1-C2-C3-C6
4	D	1354	CIT	C2-C3-C4-C5
3	A	1354	1PE	OH2-C12-C22-OH3
3	D	1353	1PE	OH6-C15-C25-OH5
5	B	1355	BME	O1-C1-C2-S2
3	B	1353	1PE	OH5-C14-C24-OH4
3	D	1353	1PE	C25-C15-OH6-C26
3	A	1353	1PE	C16-C26-OH6-C15

Continued on next page...

Continued from previous page...

Mol	Chain	Res	Type	Atoms
3	A	1354	1PE	C25-C15-OH6-C26
3	A	1354	1PE	C12-C22-OH3-C23
3	A	1353	1PE	OH7-C16-C26-OH6
3	D	1353	1PE	OH5-C14-C24-OH4
4	A	1355	CIT	C4-C3-C6-O6
4	A	1356	CIT	C4-C3-C6-O5
4	A	1356	CIT	C4-C3-C6-O6
4	B	1354	CIT	C4-C3-C6-O5
4	A	1356	CIT	C3-C4-C5-O4
3	A	1354	1PE	OH5-C14-C24-OH4
4	A	1355	CIT	C6-C3-C4-C5
4	A	1356	CIT	C3-C4-C5-O3
4	A	1355	CIT	C4-C3-C6-O5
4	B	1354	CIT	C4-C3-C6-O6
3	B	1353	1PE	C14-C24-OH4-C13
3	A	1354	1PE	C14-C24-OH4-C13
4	A	1355	CIT	C2-C3-C4-C5
3	A	1353	1PE	C12-C22-OH3-C23
3	B	1353	1PE	OH6-C15-C25-OH5
3	A	1353	1PE	C14-C24-OH4-C13
3	A	1353	1PE	C23-C13-OH4-C24
3	B	1353	1PE	OH4-C13-C23-OH3
4	A	1355	CIT	C3-C4-C5-O4
4	C	1353	CIT	C1-C2-C3-O7
4	A	1355	CIT	C3-C4-C5-O3
4	D	1354	CIT	C3-C4-C5-O3
4	D	1354	CIT	C3-C4-C5-O4
3	A	1353	1PE	OH2-C12-C22-OH3
3	D	1353	1PE	C12-C22-OH3-C23
4	A	1356	CIT	O1-C1-C2-C3
3	A	1354	1PE	OH4-C13-C23-OH3

There are no ring outliers.

10 monomers are involved in 43 short contacts:

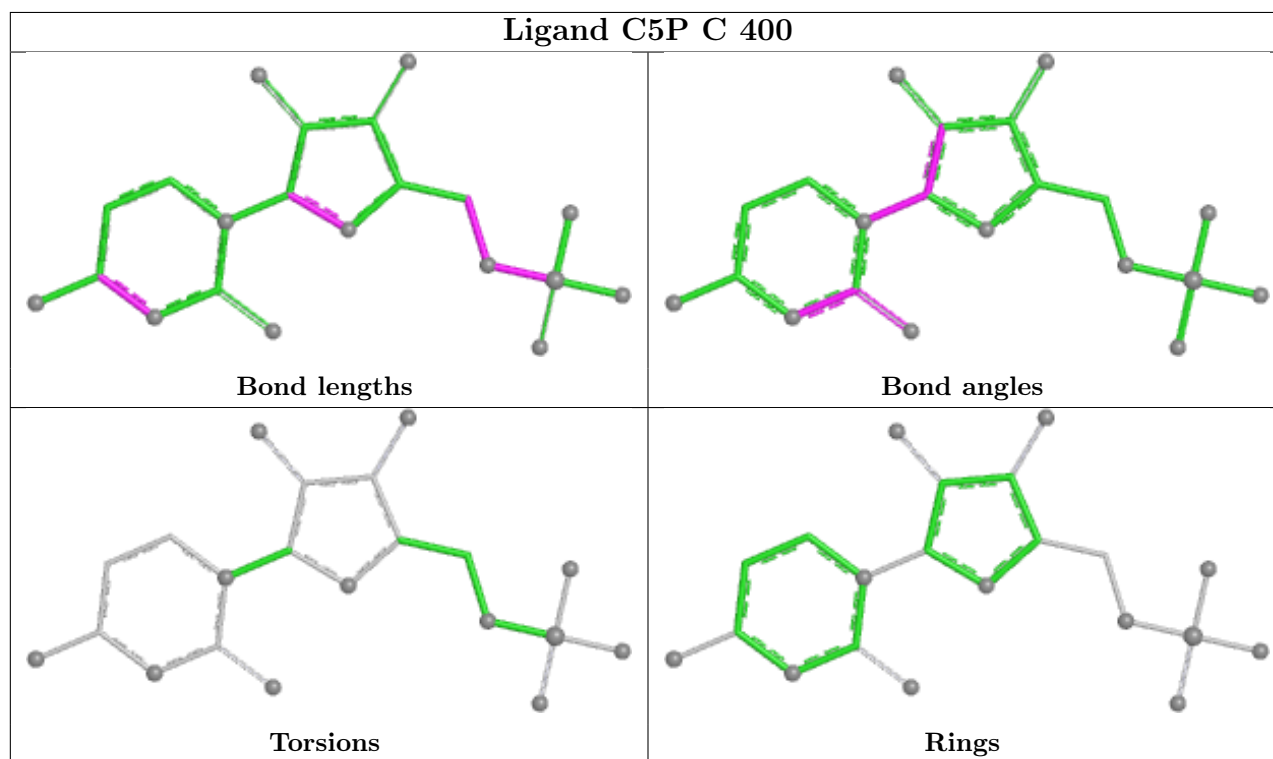
Mol	Chain	Res	Type	Clashes	Symm-Clashes
3	A	1354	1PE	3	0
4	A	1355	CIT	10	0
4	B	1354	CIT	2	0
4	D	1354	CIT	3	0
3	A	1353	1PE	6	0
4	A	1356	CIT	3	0

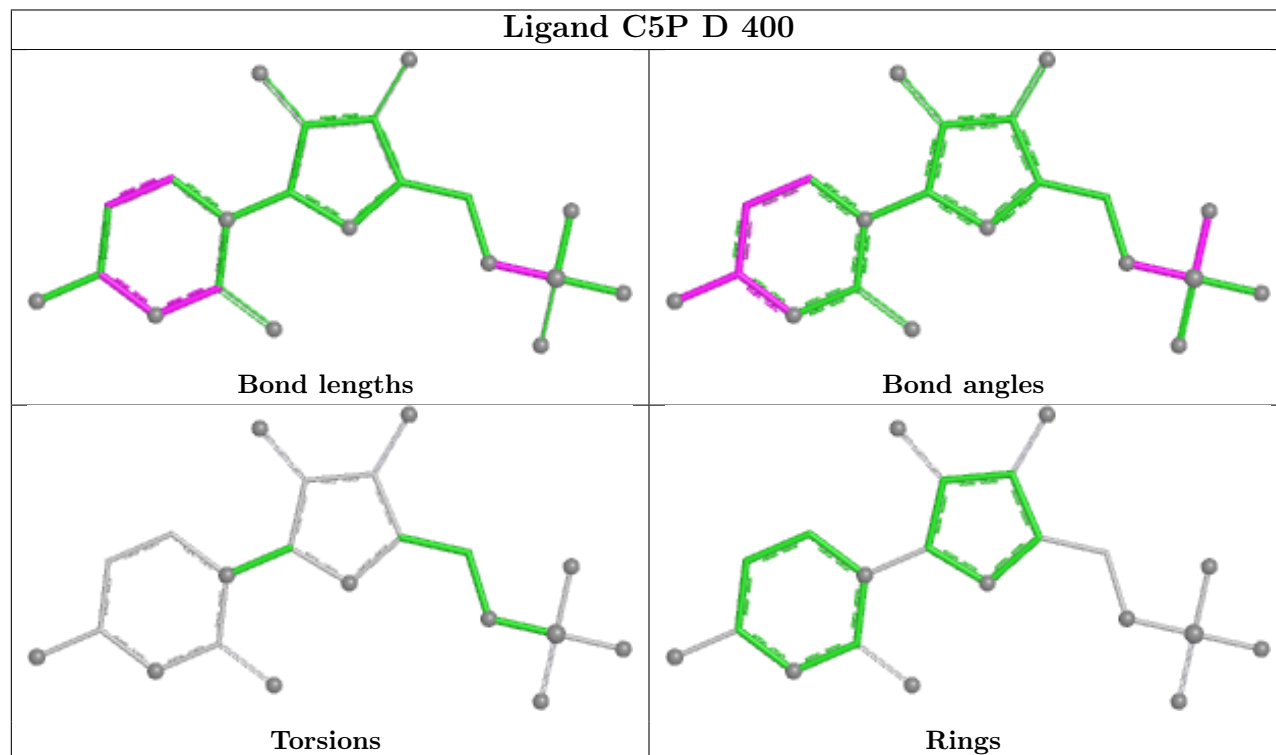
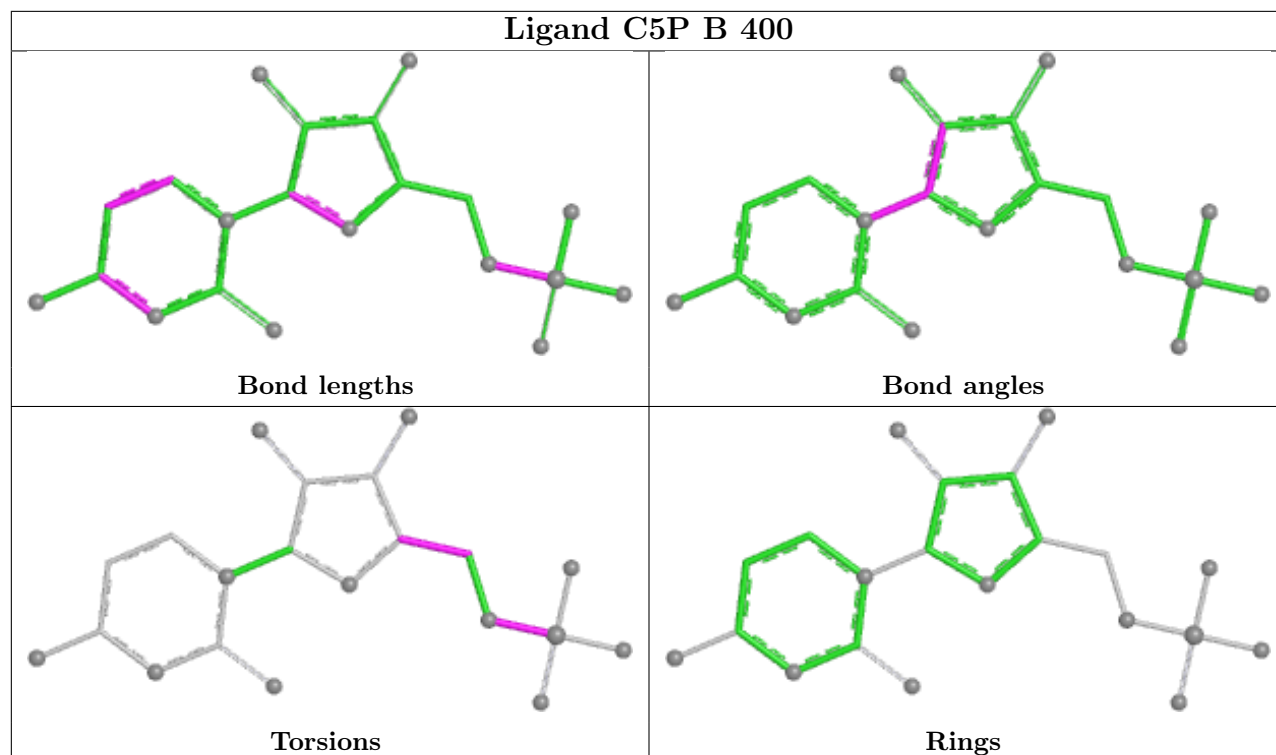
Continued on next page...

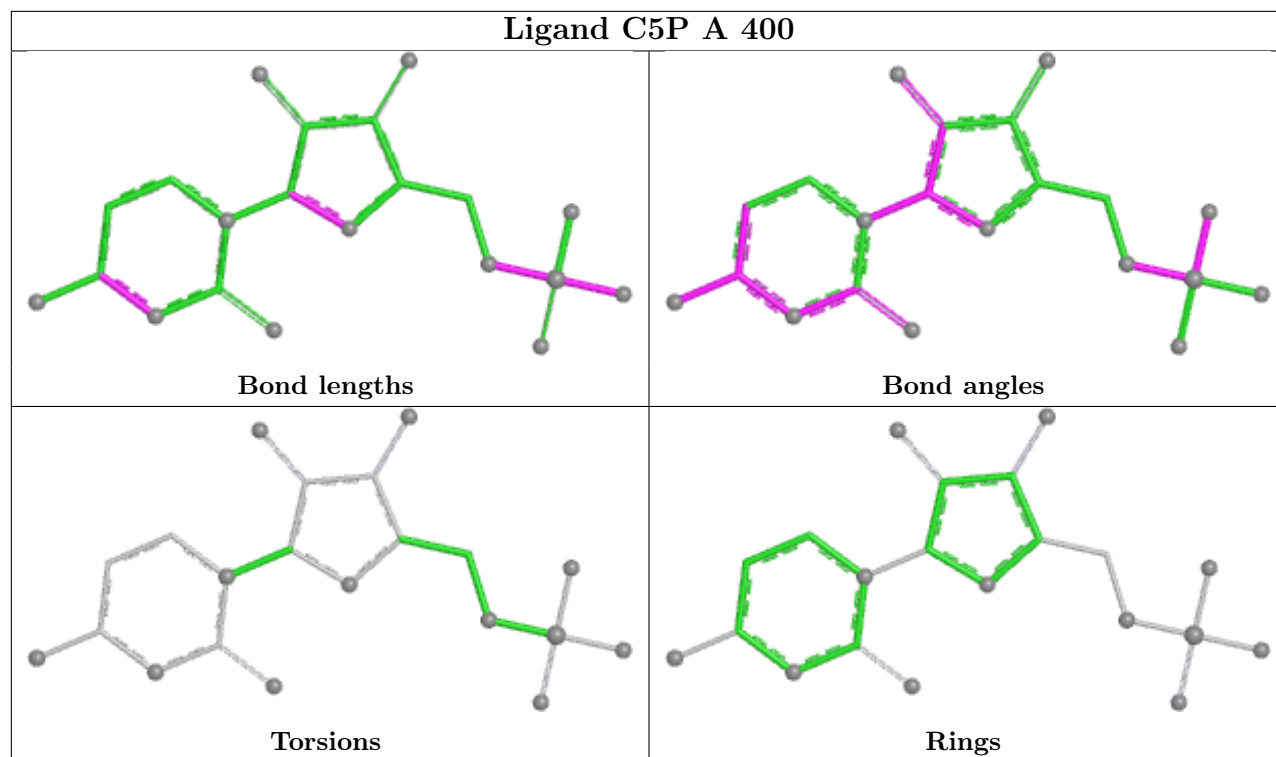
Continued from previous page...

Mol	Chain	Res	Type	Clashes	Symm-Clashes
2	C	400	C5P	1	0
3	B	1353	1PE	8	0
5	D	1355	BME	1	0
3	D	1353	1PE	6	0

The following is a two-dimensional graphical depiction of Mogul quality analysis of bond lengths, bond angles, torsion angles, and ring geometry for all instances of the Ligand of Interest. In addition, ligands with molecular weight > 250 and outliers as shown on the validation Tables will also be included. For torsion angles, if less than 5% of the Mogul distribution of torsion angles is within 10 degrees of the torsion angle in question, then that torsion angle is considered an outlier. Any bond that is central to one or more torsion angles identified as an outlier by Mogul will be highlighted in the graph. For rings, the root-mean-square deviation (RMSD) between the ring in question and similar rings identified by Mogul is calculated over all ring torsion angles. If the average RMSD is greater than 60 degrees and the minimal RMSD between the ring in question and any Mogul-identified rings is also greater than 60 degrees, then that ring is considered an outlier. The outliers are highlighted in purple. The color gray indicates Mogul did not find sufficient equivalents in the CSD to analyse the geometry.







5.7 Other polymers [i](#)

There are no such residues in this entry.

5.8 Polymer linkage issues [i](#)

There are no chain breaks in this entry.

6 Fit of model and data [i](#)

6.1 Protein, DNA and RNA chains [i](#)

In the following table, the column labelled ‘#RSRZ > 2’ contains the number (and percentage) of RSRZ outliers, followed by percent RSRZ outliers for the chain as percentile scores relative to all X-ray entries and entries of similar resolution. The OWAB column contains the minimum, median, 95th percentile and maximum values of the occupancy-weighted average B-factor per residue. The column labelled ‘Q < 0.9’ lists the number of (and percentage) of residues with an average occupancy less than 0.9.

Mol	Chain	Analysed	<RSRZ>	#RSRZ>2	OWAB(Å ²)	Q<0.9
1	A	353/374 (94%)	-0.10	8 (2%) 60 57	18, 42, 61, 71	0
1	B	352/374 (94%)	0.07	17 (4%) 30 28	19, 46, 69, 84	0
1	C	353/374 (94%)	0.13	18 (5%) 28 26	18, 44, 68, 82	0
1	D	352/374 (94%)	0.21	20 (5%) 23 22	18, 46, 71, 83	0
All	All	1410/1496 (94%)	0.08	63 (4%) 33 31	18, 45, 68, 84	0

All (63) RSRZ outliers are listed below:

Mol	Chain	Res	Type	RSRZ
1	D	153	LYS	4.9
1	C	169	LYS	4.2
1	C	180	ALA	4.2
1	B	352	GLY	4.1
1	B	169	LYS	3.9
1	D	173	LEU	3.7
1	D	148	LYS	3.6
1	D	351	ARG	3.5
1	D	169	LYS	3.5
1	B	236	ASN	3.5
1	B	153	LYS	3.5
1	C	209	LEU	3.3
1	D	352	GLY	3.3
1	D	246	ARG	3.3
1	A	169	LYS	3.3
1	C	352	GLY	3.2
1	D	291	HIS	3.2
1	B	148	LYS	3.2
1	D	174	LYS	3.2
1	D	200	LYS	3.2
1	C	183	ILE	3.1

Continued on next page...

Continued from previous page...

Mol	Chain	Res	Type	RSRZ
1	B	351	ARG	3.1
1	B	174	LYS	3.0
1	C	261	ILE	3.0
1	D	170	GLY	2.9
1	C	291	HIS	2.9
1	C	260	ALA	2.9
1	B	291	HIS	2.8
1	C	181	GLY	2.8
1	A	268	ASN	2.7
1	D	230	LYS	2.7
1	B	96	VAL	2.6
1	D	172	LYS	2.6
1	C	179	VAL	2.6
1	A	352	GLY	2.6
1	B	170	GLY	2.6
1	A	170	GLY	2.5
1	C	0	HIS	2.5
1	D	56	ARG	2.5
1	B	173	LEU	2.5
1	D	289	TYR	2.5
1	A	168	GLY	2.4
1	A	56	ARG	2.4
1	C	210	VAL	2.3
1	D	96	VAL	2.3
1	B	149	THR	2.3
1	D	167	LYS	2.3
1	C	97	VAL	2.3
1	D	180	ALA	2.3
1	B	95	ILE	2.2
1	B	247	PHE	2.2
1	C	153	LYS	2.2
1	C	268	ASN	2.2
1	C	289	TYR	2.2
1	A	291	HIS	2.1
1	B	171	ILE	2.1
1	B	56	ARG	2.1
1	B	168	GLY	2.1
1	D	151	GLY	2.1
1	A	97	VAL	2.1
1	D	210	VAL	2.1
1	C	171	ILE	2.1
1	C	246	ARG	2.0

6.2 Non-standard residues in protein, DNA, RNA chains [i](#)

There are no non-standard protein/DNA/RNA residues in this entry.

6.3 Carbohydrates [i](#)

There are no monosaccharides in this entry.

6.4 Ligands [i](#)

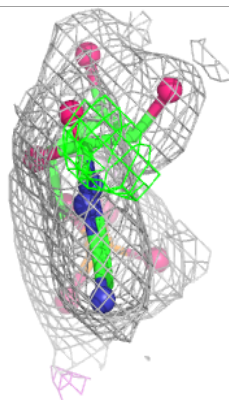
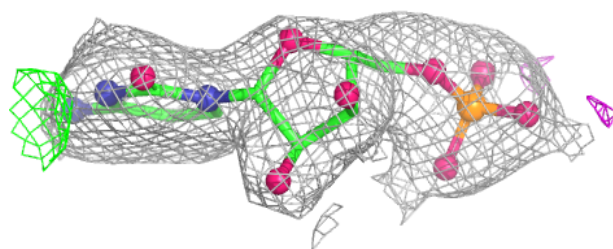
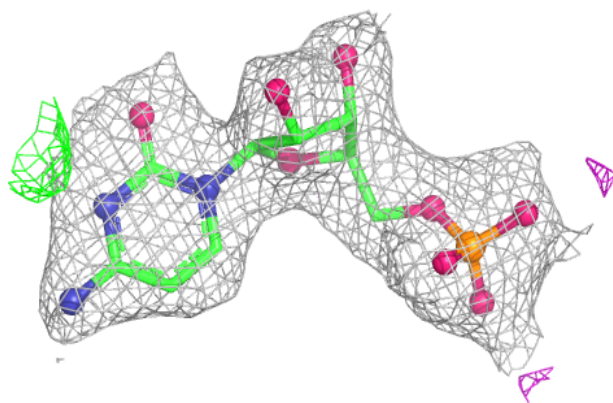
In the following table, the Atoms column lists the number of modelled atoms in the group and the number defined in the chemical component dictionary. The B-factors column lists the minimum, median, 95th percentile and maximum values of B factors of atoms in the group. The column labelled 'Q< 0.9' lists the number of atoms with occupancy less than 0.9.

Mol	Type	Chain	Res	Atoms	RSCC	RSR	B-factors(\AA^2)	Q<0.9
5	BME	C	1355	4/4	0.79	0.19	91,92,92,93	0
4	CIT	B	1354	13/13	0.80	0.21	42,49,57,58	0
4	CIT	A	1356	13/13	0.80	0.19	33,38,47,47	0
4	CIT	A	1355	13/13	0.83	0.22	60,62,65,65	0
4	CIT	D	1354	13/13	0.84	0.19	48,55,63,64	0
3	1PE	A	1353	16/16	0.86	0.20	44,49,53,54	0
3	1PE	A	1354	16/16	0.89	0.18	48,50,57,57	0
5	BME	D	1355	4/4	0.89	0.17	50,53,53,57	0
5	BME	B	1355	4/4	0.91	0.13	49,49,51,53	0
5	BME	C	1354	4/4	0.91	0.15	58,58,59,60	0
4	CIT	C	1353	13/13	0.92	0.14	37,43,46,47	0
3	1PE	D	1353	16/16	0.93	0.15	46,48,51,52	0
3	1PE	B	1353	16/16	0.94	0.14	43,47,48,50	0
2	C5P	C	400	21/21	0.95	0.11	36,39,42,42	0
2	C5P	D	400	21/21	0.96	0.09	40,46,48,49	0
2	C5P	B	400	21/21	0.96	0.10	42,46,49,52	0
2	C5P	A	400	21/21	0.97	0.09	31,33,36,37	0
6	CL	B	1356	1/1	0.99	0.15	29,29,29,29	0

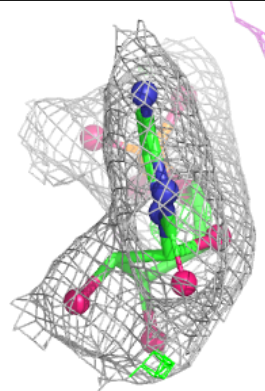
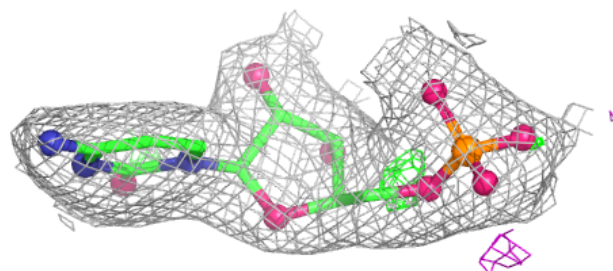
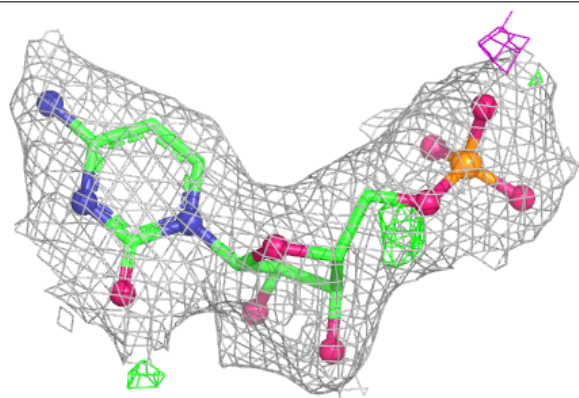
The following is a graphical depiction of the model fit to experimental electron density of all instances of the Ligand of Interest. In addition, ligands with molecular weight > 250 and outliers as shown on the geometry validation Tables will also be included. Each fit is shown from different orientation to approximate a three-dimensional view.

Electron density around C5P C 400:

$2mF_o-DF_c$ (at 0.7 rmsd) in gray
 mF_o-DF_c (at 3 rmsd) in purple (negative)
and green (positive)

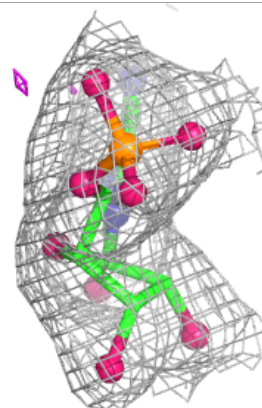
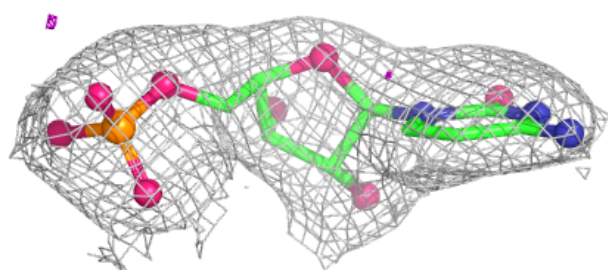
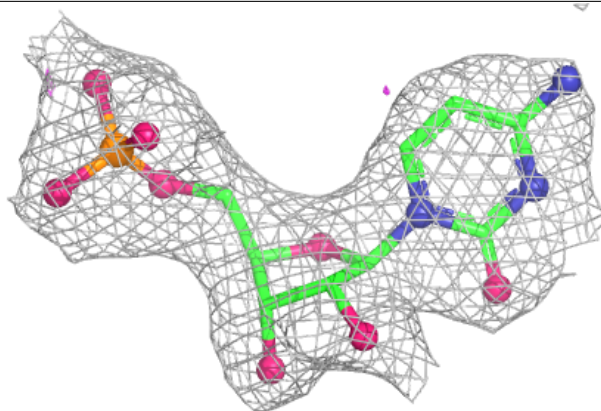
**Electron density around C5P D 400:**

$2mF_o-DF_c$ (at 0.7 rmsd) in gray
 mF_o-DF_c (at 3 rmsd) in purple (negative)
and green (positive)

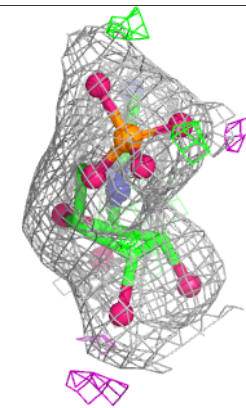
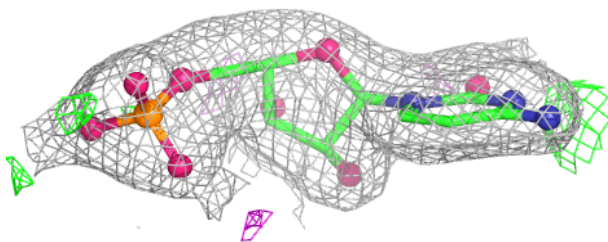
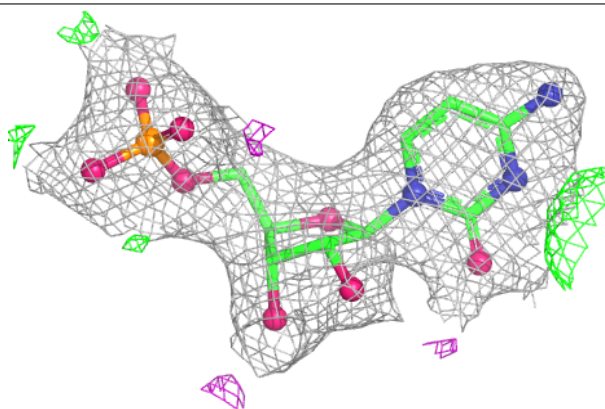


Electron density around C5P B 400:

$2mF_o-DF_c$ (at 0.7 rmsd) in gray
 mF_o-DF_c (at 3 rmsd) in purple (negative)
and green (positive)

**Electron density around C5P A 400:**

$2mF_o-DF_c$ (at 0.7 rmsd) in gray
 mF_o-DF_c (at 3 rmsd) in purple (negative)
and green (positive)



6.5 Other polymers [i](#)

There are no such residues in this entry.