



Full wwPDB X-ray Structure Validation Report ⓘ

Apr 28, 2024 – 03:41 am BST

PDB ID : 2UYI
Title : Crystal structure of KSP in complex with ADP and thiophene containing inhibitor 33
Authors : Lee, T.T.
Deposited on : 2007-04-07
Resolution : 2.10 Å(reported)

This is a Full wwPDB X-ray Structure Validation Report for a publicly released PDB entry.

We welcome your comments at validation@mail.wwpdb.org

A user guide is available at

<https://www.wwpdb.org/validation/2017/XrayValidationReportHelp>

with specific help available everywhere you see the ⓘ symbol.

The types of validation reports are described at

<http://www.wwpdb.org/validation/2017/FAQs#types>.

The following versions of software and data (see [references ⓘ](#)) were used in the production of this report:

MolProbity : 4.02b-467
Mogul : 1.8.4, CSD as541be (2020)
Xtrriage (Phenix) : 1.13
EDS : 2.36.2
buster-report : 1.1.7 (2018)
Percentile statistics : 20191225.v01 (using entries in the PDB archive December 25th 2019)
Refmac : 5.8.0158
CCP4 : 7.0.044 (Gargrove)
Ideal geometry (proteins) : Engh & Huber (2001)
Ideal geometry (DNA, RNA) : Parkinson et al. (1996)
Validation Pipeline (wwPDB-VP) : 2.36.2

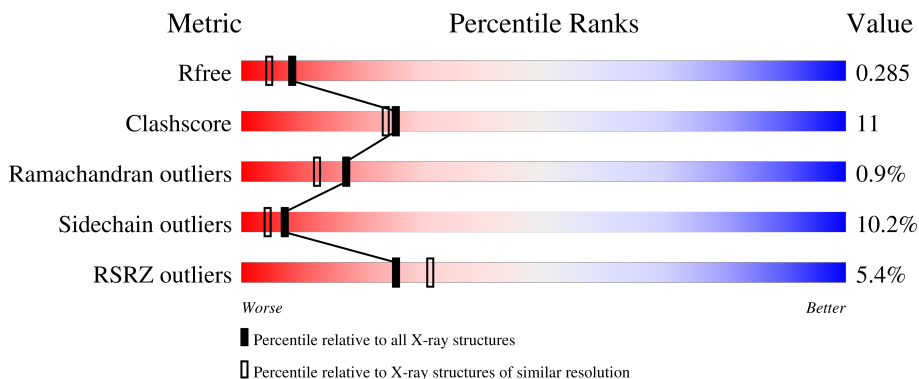
1 Overall quality at a glance

The following experimental techniques were used to determine the structure:

X-RAY DIFFRACTION

The reported resolution of this entry is 2.10 Å.

Percentile scores (ranging between 0-100) for global validation metrics of the entry are shown in the following graphic. The table shows the number of entries on which the scores are based.



Metric	Whole archive (#Entries)	Similar resolution (#Entries, resolution range(Å))
R_{free}	130704	5197 (2.10-2.10)
Clashscore	141614	5710 (2.10-2.10)
Ramachandran outliers	138981	5647 (2.10-2.10)
Sidechain outliers	138945	5648 (2.10-2.10)
RSRZ outliers	127900	5083 (2.10-2.10)

The table below summarises the geometric issues observed across the polymeric chains and their fit to the electron density. The red, orange, yellow and green segments of the lower bar indicate the fraction of residues that contain outliers for ≥ 3 , 2, 1 and 0 types of geometric quality criteria respectively. A grey segment represents the fraction of residues that are not modelled. The numeric value for each fraction is indicated below the corresponding segment, with a dot representing fractions $\leq 5\%$. The upper red bar (where present) indicates the fraction of residues that have poor fit to the electron density. The numeric value is given above the bar.

Mol	Chain	Length	Quality of chain
1	A	368	 6% 64% 21% 10%
1	B	368	 4% 65% 22% 10%

2 Entry composition [i](#)

There are 5 unique types of molecules in this entry. The entry contains 5580 atoms, of which 0 are hydrogens and 0 are deuteriums.

In the tables below, the ZeroOcc column contains the number of atoms modelled with zero occupancy, the AltConf column contains the number of residues with at least one atom in alternate conformation and the Trace column contains the number of residues modelled with at most 2 atoms.

- Molecule 1 is a protein called KINESIN-LIKE PROTEIN KIF11.

Mol	Chain	Residues	Atoms					ZeroOcc	AltConf	Trace
			Total	C	N	O	S			
1	A	331	Total 2599	C 1628	N 453	O 508	S 10	0	0	0
1	B	331	Total 2599	C 1628	N 453	O 508	S 10	0	0	0

- Molecule 2 is ADENOSINE-5'-DIPHOSPHATE (three-letter code: ADP) (formula: $C_{10}H_{15}N_5O_{10}P_2$).

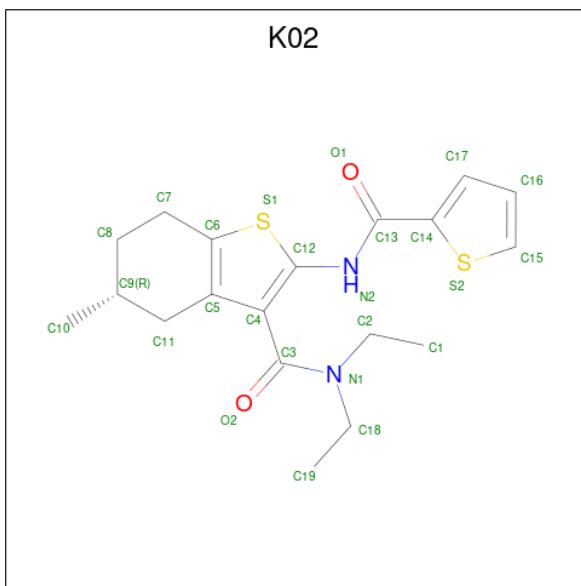


Mol	Chain	Residues	Atoms					ZeroOcc	AltConf
			Total	C	N	O	P		
2	A	1	Total 27	C 10	N 5	O 10	P 2	0	0
2	B	1	Total 27	C 10	N 5	O 10	P 2	0	0

- Molecule 3 is MAGNESIUM ION (three-letter code: MG) (formula: Mg).

Mol	Chain	Residues	Atoms	ZeroOcc	AltConf
3	A	1	Total Mg 1 1	0	0
3	B	1	Total Mg 1 1	0	0

- Molecule 4 is (5R)-N,N-DIETHYL-5-METHYL-2-[(THIOPHEN-2-YLCARBONYL)AMINO]-4,5,6,7-TETRAHYDRO-1-BENZOTHIOPHENE-3-CARBOXAMIDE (three-letter code: K02) (formula: C₁₉H₂₄N₂O₂S₂).



Mol	Chain	Residues	Atoms	ZeroOcc	AltConf
4	A	1	Total C N O S 25 19 2 2 2	0	0
4	B	1	Total C N O S 25 19 2 2 2	0	0

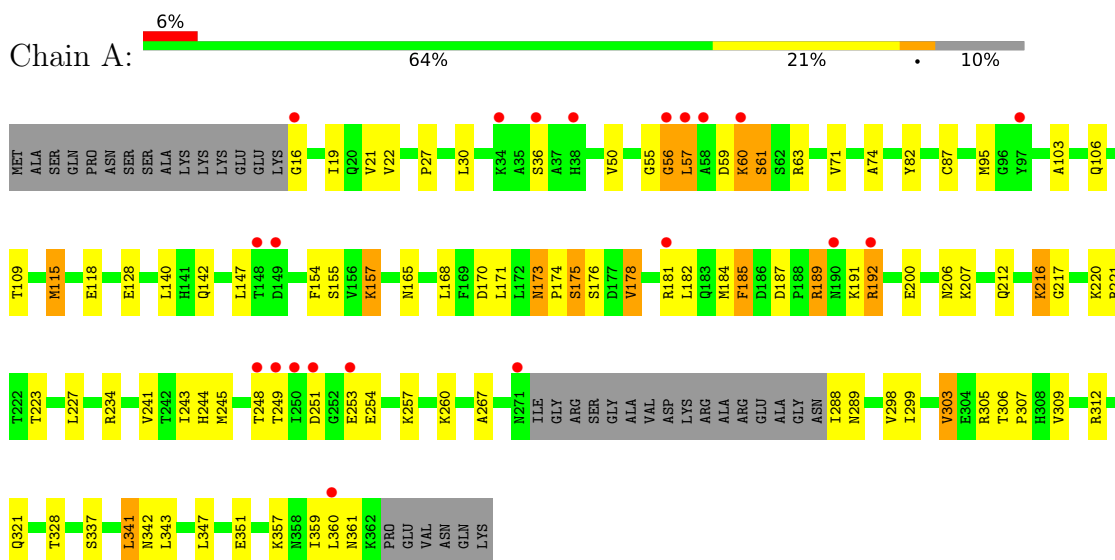
- Molecule 5 is water.

Mol	Chain	Residues	Atoms	ZeroOcc	AltConf
5	A	138	Total O 138 138	0	0
5	B	138	Total O 138 138	0	0

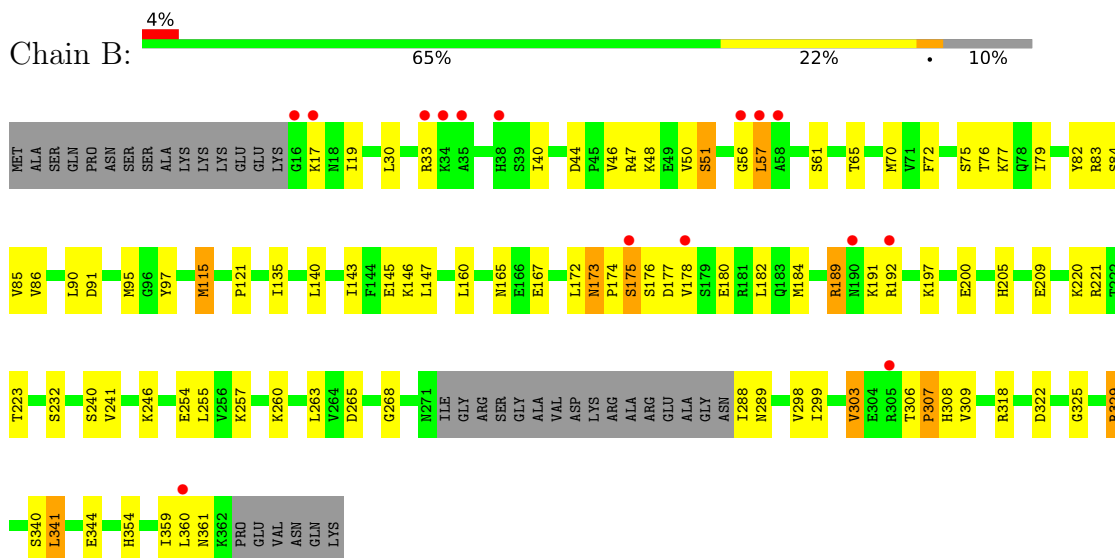
3 Residue-property plots [i](#)

These plots are drawn for all protein, RNA, DNA and oligosaccharide chains in the entry. The first graphic for a chain summarises the proportions of the various outlier classes displayed in the second graphic. The second graphic shows the sequence view annotated by issues in geometry and electron density. Residues are color-coded according to the number of geometric quality criteria for which they contain at least one outlier: green = 0, yellow = 1, orange = 2 and red = 3 or more. A red dot above a residue indicates a poor fit to the electron density ($RSRZ > 2$). Stretches of 2 or more consecutive residues without any outlier are shown as a green connector. Residues present in the sample, but not in the model, are shown in grey.

- Molecule 1: KINESIN-LIKE PROTEIN KIF11



- Molecule 1: KINESIN-LIKE PROTEIN KIF11



4 Data and refinement statistics

Property	Value	Source
Space group	P 21 21 21	Depositor
Cell constants a, b, c, α , β , γ	69.53Å 80.14Å 159.04Å 90.00° 90.00° 90.00°	Depositor
Resolution (Å)	79.56 – 2.10 40.07 – 2.10	Depositor EDS
% Data completeness (in resolution range)	96.9 (79.56-2.10) 96.9 (40.07-2.10)	Depositor EDS
R_{merge}	0.14	Depositor
R_{sym}	(Not available)	Depositor
$\langle I/\sigma(I) \rangle$ ¹	2.04 (at 2.10Å)	Xtrriage
Refinement program	REFMAC 5.2.0019	Depositor
R, R_{free}	0.237 , 0.294 0.232 , 0.285	Depositor DCC
R_{free} test set	2615 reflections (5.12%)	wwPDB-VP
Wilson B-factor (Å ²)	30.0	Xtrriage
Anisotropy	0.142	Xtrriage
Bulk solvent k_{sol} (e/Å ³), B_{sol} (Å ²)	0.34 , 55.0	EDS
L-test for twinning ²	$\langle L \rangle = 0.47$, $\langle L^2 \rangle = 0.31$	Xtrriage
Estimated twinning fraction	No twinning to report.	Xtrriage
F_o, F_c correlation	0.93	EDS
Total number of atoms	5580	wwPDB-VP
Average B, all atoms (Å ²)	32.0	wwPDB-VP

Xtrriage's analysis on translational NCS is as follows: *The analyses of the Patterson function reveals a significant off-origin peak that is 47.74 % of the origin peak, indicating pseudo-translational symmetry. The chance of finding a peak of this or larger height randomly in a structure without pseudo-translational symmetry is equal to 9.5088e-05. The detected translational NCS is most likely also responsible for the elevated intensity ratio.*

¹Intensities estimated from amplitudes.

²Theoretical values of $\langle |L| \rangle$, $\langle L^2 \rangle$ for acentric reflections are 0.5, 0.333 respectively for untwinned datasets, and 0.375, 0.2 for perfectly twinned datasets.

5 Model quality [i](#)

5.1 Standard geometry [i](#)

Bond lengths and bond angles in the following residue types are not validated in this section: ADP, K02, MG

The Z score for a bond length (or angle) is the number of standard deviations the observed value is removed from the expected value. A bond length (or angle) with $|Z| > 5$ is considered an outlier worth inspection. RMSZ is the root-mean-square of all Z scores of the bond lengths (or angles).

Mol	Chain	Bond lengths		Bond angles	
		RMSZ	# Z >5	RMSZ	# Z >5
1	A	1.19	4/2637 (0.2%)	1.07	8/3564 (0.2%)
1	B	1.08	3/2637 (0.1%)	1.01	8/3564 (0.2%)
All	All	1.14	7/5274 (0.1%)	1.04	16/7128 (0.2%)

All (7) bond length outliers are listed below:

Mol	Chain	Res	Type	Atoms	Z	Observed(Å)	Ideal(Å)
1	A	87	CYS	CB-SG	-9.00	1.67	1.82
1	B	268	GLY	C-O	6.10	1.33	1.23
1	A	220	LYS	CE-NZ	5.81	1.63	1.49
1	B	344	GLU	CB-CG	5.27	1.62	1.52
1	A	267	ALA	CA-CB	5.25	1.63	1.52
1	B	344	GLU	CG-CD	5.20	1.59	1.51
1	A	21	VAL	CB-CG2	5.18	1.63	1.52

All (16) bond angle outliers are listed below:

Mol	Chain	Res	Type	Atoms	Z	Observed(°)	Ideal(°)
1	A	341	LEU	CA-CB-CG	8.41	134.64	115.30
1	A	115	MET	CG-SD-CE	-7.16	88.74	100.20
1	B	115	MET	CG-SD-CE	-6.83	89.27	100.20
1	A	168	LEU	CB-CG-CD1	-6.76	99.51	111.00
1	B	221	ARG	NE-CZ-NH2	-6.75	116.93	120.30
1	B	83	ARG	NE-CZ-NH1	5.75	123.17	120.30
1	A	234	ARG	NE-CZ-NH2	-5.73	117.43	120.30
1	A	360	LEU	CA-CB-CG	5.72	128.45	115.30
1	A	184	MET	CG-SD-CE	-5.59	91.26	100.20
1	B	263	LEU	CA-CB-CG	-5.55	102.53	115.30
1	B	265	ASP	CB-CG-OD1	5.45	123.21	118.30
1	A	221	ARG	NE-CZ-NH2	-5.33	117.63	120.30

Continued on next page...

Continued from previous page...

Mol	Chain	Res	Type	Atoms	Z	Observed(°)	Ideal(°)
1	A	227	LEU	CB-CG-CD1	-5.21	102.14	111.00
1	B	220	LYS	CD-CE-NZ	5.16	123.58	111.70
1	B	341	LEU	CA-CB-CG	5.14	127.12	115.30
1	B	329	ARG	NE-CZ-NH1	5.12	122.86	120.30

There are no chirality outliers.

There are no planarity outliers.

5.2 Too-close contacts

In the following table, the Non-H and H(model) columns list the number of non-hydrogen atoms and hydrogen atoms in the chain respectively. The H(added) column lists the number of hydrogen atoms added and optimized by MolProbity. The Clashes column lists the number of clashes within the asymmetric unit, whereas Symm-Clashes lists symmetry-related clashes.

Mol	Chain	Non-H	H(model)	H(added)	Clashes	Symm-Clashes
1	A	2599	0	2627	54	0
1	B	2599	0	2627	63	0
2	A	27	0	12	0	0
2	B	27	0	12	0	0
3	A	1	0	0	0	0
3	B	1	0	0	0	0
4	A	25	0	24	1	0
4	B	25	0	24	0	0
5	A	138	0	0	15	0
5	B	138	0	0	10	0
All	All	5580	0	5326	113	0

The all-atom clashscore is defined as the number of clashes found per 1000 atoms (including hydrogen atoms). The all-atom clashscore for this structure is 11.

All (113) close contacts within the same asymmetric unit are listed below, sorted by their clash magnitude.

Atom-1	Atom-2	Interatomic distance (Å)	Clash overlap (Å)
1:A:175:SER:HB3	1:B:30:LEU:CD1	1.76	1.14
1:A:175:SER:CB	1:B:30:LEU:HD12	1.78	1.13
1:A:357:LYS:HG2	5:A:2019:HOH:O	1.52	1.08
1:A:174:PRO:HB3	1:A:216:LYS:HE3	1.36	1.02
1:B:176:SER:HB2	1:B:180:GLU:OE1	1.60	1.02
1:B:51:SER:OG	1:B:65:THR:HG22	1.61	1.00

Continued on next page...

Continued from previous page...

Atom-1	Atom-2	Interatomic distance (Å)	Clash overlap (Å)
1:A:187:ASP:OD1	1:A:189:ARG:HD2	1.62	0.98
1:B:70:MET:HE1	1:B:84:SER:HB3	1.46	0.98
1:B:40:ILE:HD13	1:B:340:SER:HA	1.42	0.96
1:B:91:ASP:OD1	1:B:146:LYS:HE2	1.71	0.90
1:A:95:MET:HG2	5:A:2013:HOH:O	1.72	0.87
1:A:312:ARG:HD2	5:A:2113:HOH:O	1.72	0.87
1:B:75:SER:O	1:B:77:LYS:HE2	1.76	0.86
1:A:175:SER:HB3	1:B:30:LEU:HD12	0.88	0.85
1:B:33:ARG:HD2	5:B:2009:HOH:O	1.83	0.78
1:B:70:MET:CE	1:B:84:SER:HB3	2.12	0.78
1:A:192:ARG:HG3	1:A:321:GLN:HG2	1.70	0.73
1:B:57:LEU:O	1:B:61:SER:HB3	1.89	0.72
1:A:321:GLN:NE2	5:A:2117:HOH:O	2.22	0.72
1:A:249:THR:HB	1:A:253:GLU:HG2	1.71	0.70
1:A:243:ILE:HG22	1:A:245:MET:HG3	1.74	0.69
1:A:178:VAL:HG21	1:A:223:THR:OG1	1.93	0.69
1:B:176:SER:CB	1:B:180:GLU:OE1	2.38	0.68
1:B:174:PRO:HG2	5:B:2011:HOH:O	1.93	0.68
1:B:70:MET:HE1	1:B:72:PHE:HZ	1.61	0.65
1:B:288:ILE:CD1	5:B:2044:HOH:O	2.48	0.62
1:B:57:LEU:HD22	1:B:57:LEU:H	1.64	0.61
1:A:248:THR:HG22	5:A:2094:HOH:O	2.01	0.60
1:B:288:ILE:HD12	5:B:2044:HOH:O	2.02	0.60
1:A:357:LYS:HE3	5:A:2019:HOH:O	1.99	0.60
1:A:118:GLU:O	4:A:604:K02:H16	2.02	0.60
1:B:57:LEU:H	1:B:57:LEU:CD2	2.14	0.59
1:A:303:VAL:HG12	1:A:359:ILE:HG12	1.84	0.59
1:A:187:ASP:OD1	1:A:189:ARG:CD	2.47	0.58
1:A:63:ARG:HD2	5:A:2015:HOH:O	2.02	0.57
1:A:174:PRO:CB	1:A:216:LYS:HE3	2.23	0.57
1:A:249:THR:HG22	1:A:251:ASP:H	1.68	0.56
1:A:299:ILE:HG23	1:A:359:ILE:HD11	1.87	0.56
1:B:184:MET:CE	1:B:318:ARG:CZ	2.83	0.56
1:B:95:MET:HE3	1:B:97:TYR:HE2	1.71	0.56
1:A:244:HIS:HD2	5:A:2093:HOH:O	1.89	0.56
1:A:82:TYR:OH	1:A:142:GLN:HG3	2.05	0.56
1:B:354:HIS:CD2	5:B:2131:HOH:O	2.59	0.56
1:B:299:ILE:O	1:B:303:VAL:HG13	2.06	0.55
1:A:357:LYS:CE	5:A:2019:HOH:O	2.55	0.54
1:B:82:TYR:CD2	1:B:86:VAL:HB	2.42	0.54
1:B:240:SER:HB3	1:B:260:LYS:HE2	1.91	0.53

Continued on next page...

Continued from previous page...

Atom-1	Atom-2	Interatomic distance (Å)	Clash overlap (Å)
1:B:308:HIS:HE1	5:B:2116:HOH:O	1.91	0.53
1:B:90:LEU:HD11	1:B:143:ILE:HG12	1.90	0.53
1:B:167:GLU:HG2	5:B:2020:HOH:O	2.08	0.53
1:B:205:HIS:HB2	1:B:209:GLU:OE2	2.09	0.53
1:A:157:LYS:HG2	5:A:2093:HOH:O	2.09	0.52
1:A:142:GLN:HG2	5:A:2051:HOH:O	2.09	0.52
1:A:306:THR:HG22	1:A:307:PRO:HD2	1.92	0.52
1:B:173:ASN:HD22	1:B:173:ASN:C	2.13	0.52
1:B:91:ASP:OD1	1:B:146:LYS:CE	2.52	0.51
1:B:19:ILE:HD12	1:B:359:ILE:HB	1.94	0.50
1:B:51:SER:OG	1:B:65:THR:CG2	2.48	0.49
1:B:299:ILE:HG23	1:B:359:ILE:HD11	1.95	0.49
1:B:184:MET:HE2	1:B:318:ARG:CZ	2.42	0.48
1:B:325:GLY:H	1:B:361:ASN:HD21	1.60	0.48
1:B:86:VAL:HG21	1:B:135:ILE:HG12	1.94	0.48
1:B:79:ILE:HG22	5:B:2021:HOH:O	2.13	0.47
1:B:160:LEU:HB3	1:B:172:LEU:HG	1.96	0.47
1:B:70:MET:HE1	1:B:72:PHE:CZ	2.46	0.47
1:A:154:PHE:HA	1:A:244:HIS:O	2.15	0.46
1:A:299:ILE:O	1:A:303:VAL:HG13	2.16	0.46
1:B:189:ARG:H	1:B:189:ARG:HG3	1.47	0.46
1:B:90:LEU:HD11	1:B:143:ILE:CG1	2.46	0.46
1:A:185:PHE:CD1	1:A:185:PHE:N	2.84	0.45
1:A:173:ASN:C	1:A:173:ASN:HD22	2.19	0.45
1:B:44:ASP:O	1:B:48:LYS:N	2.49	0.45
1:A:328:THR:O	1:A:361:ASN:OD1	2.34	0.45
1:A:16:GLY:HA3	5:A:2004:HOH:O	2.16	0.45
1:A:103:ALA:HB2	1:A:115:MET:CE	2.47	0.45
1:B:306:THR:HG22	1:B:307:PRO:HD2	1.98	0.45
1:B:70:MET:CE	1:B:72:PHE:CZ	3.00	0.45
1:A:57:LEU:HB3	1:A:59:ASP:H	1.81	0.45
1:B:95:MET:CE	1:B:97:TYR:HE2	2.29	0.45
1:B:173:ASN:HA	1:B:174:PRO:HD3	1.83	0.44
1:B:192:ARG:HE	1:B:322:ASP:HA	1.83	0.44
1:B:246:LYS:NZ	1:B:254:GLU:OE2	2.40	0.44
1:B:246:LYS:HA	1:B:255:LEU:O	2.18	0.44
1:A:19:ILE:HD12	1:A:359:ILE:HB	1.99	0.44
1:B:174:PRO:CG	5:B:2011:HOH:O	2.59	0.44
1:B:115:MET:HE1	1:B:135:ILE:HD12	1.99	0.44
1:B:173:ASN:ND2	1:B:175:SER:H	2.16	0.44
1:A:212:GLN:HG3	1:B:121:PRO:HB3	2.00	0.43

Continued on next page...

Continued from previous page...

Atom-1	Atom-2	Interatomic distance (Å)	Clash overlap (Å)
1:B:298:VAL:HG13	1:B:309:VAL:CG1	2.48	0.43
1:B:173:ASN:C	1:B:173:ASN:ND2	2.71	0.43
1:A:106:GLN:HG2	1:A:109:THR:CG2	2.49	0.43
1:B:173:ASN:HD22	1:B:174:PRO:N	2.17	0.43
1:A:357:LYS:CG	5:A:2019:HOH:O	2.34	0.42
1:B:72:PHE:HB3	1:B:76:THR:HG21	2.00	0.42
1:B:70:MET:HB3	1:B:70:MET:HE2	1.89	0.42
1:B:182:LEU:HD22	1:B:197:LYS:O	2.20	0.42
1:A:347:LEU:O	1:A:351:GLU:HG2	2.19	0.42
1:A:103:ALA:HB2	1:A:115:MET:HE3	2.02	0.42
1:A:298:VAL:HG13	1:A:309:VAL:CG1	2.50	0.42
1:A:170:ASP:HB2	1:A:182:LEU:HD11	2.01	0.41
1:B:354:HIS:HD2	5:B:2056:HOH:O	2.04	0.41
1:B:44:ASP:OD2	1:B:47:ARG:HD3	2.21	0.41
1:B:91:ASP:O	1:B:95:MET:HG3	2.21	0.41
1:A:27:PRO:HA	1:A:74:ALA:HB1	2.02	0.41
1:A:157:LYS:HE3	5:A:2053:HOH:O	2.20	0.41
1:A:171:LEU:O	1:A:217:GLY:HA2	2.21	0.41
1:A:192:ARG:CG	1:A:321:GLN:HG2	2.46	0.41
1:A:342:ASN:O	1:A:343:LEU:C	2.57	0.41
1:A:155:SER:O	1:A:243:ILE:HA	2.20	0.41
1:A:56:GLY:HA3	1:A:61:SER:HA	2.03	0.40
1:A:357:LYS:CD	5:A:2019:HOH:O	2.69	0.40
1:A:60:LYS:NZ	1:A:60:LYS:HB2	2.37	0.40
1:A:106:GLN:HG2	1:A:109:THR:HG21	2.02	0.40

There are no symmetry-related clashes.

5.3 Torsion angles [i](#)

5.3.1 Protein backbone [i](#)

In the following table, the Percentiles column shows the percent Ramachandran outliers of the chain as a percentile score with respect to all X-ray entries followed by that with respect to entries of similar resolution.

The Analysed column shows the number of residues for which the backbone conformation was analysed, and the total number of residues.

Mol	Chain	Analysed	Favoured	Allowed	Outliers	Percentiles
1	A	327/368 (89%)	313 (96%)	12 (4%)	2 (1%)	25 21

Continued on next page...

Continued from previous page...

Mol	Chain	Analysed	Favoured	Allowed	Outliers	Percentiles	
1	B	327/368 (89%)	313 (96%)	10 (3%)	4 (1%)	13	8
All	All	654/736 (89%)	626 (96%)	22 (3%)	6 (1%)	17	12

All (6) Ramachandran outliers are listed below:

Mol	Chain	Res	Type
1	A	56	GLY
1	B	56	GLY
1	B	17	LYS
1	B	175	SER
1	A	55	GLY
1	B	307	PRO

5.3.2 Protein sidechains [i](#)

In the following table, the Percentiles column shows the percent sidechain outliers of the chain as a percentile score with respect to all X-ray entries followed by that with respect to entries of similar resolution.

The Analysed column shows the number of residues for which the sidechain conformation was analysed, and the total number of residues.

Mol	Chain	Analysed	Rotameric	Outliers	Percentiles	
1	A	293/322 (91%)	257 (88%)	36 (12%)	4	2
1	B	293/322 (91%)	269 (92%)	24 (8%)	11	8
All	All	586/644 (91%)	526 (90%)	60 (10%)	7	4

All (60) residues with a non-rotameric sidechain are listed below:

Mol	Chain	Res	Type
1	A	22	VAL
1	A	30	LEU
1	A	36	SER
1	A	50	VAL
1	A	57	LEU
1	A	60	LYS
1	A	61	SER
1	A	71	VAL
1	A	128	GLU
1	A	140	LEU

Continued on next page...

Continued from previous page...

Mol	Chain	Res	Type
1	A	147	LEU
1	A	157	LYS
1	A	165	ASN
1	A	173	ASN
1	A	175	SER
1	A	176	SER
1	A	178	VAL
1	A	181	ARG
1	A	185	PHE
1	A	189	ARG
1	A	191	LYS
1	A	192	ARG
1	A	200	GLU
1	A	206	ASN
1	A	207	LYS
1	A	216	LYS
1	A	241	VAL
1	A	254	GLU
1	A	257	LYS
1	A	260	LYS
1	A	288	ILE
1	A	289	ASN
1	A	303	VAL
1	A	305	ARG
1	A	337	SER
1	A	341	LEU
1	B	46	VAL
1	B	50	VAL
1	B	51	SER
1	B	57	LEU
1	B	85	VAL
1	B	140	LEU
1	B	145	GLU
1	B	147	LEU
1	B	165	ASN
1	B	173	ASN
1	B	177	ASP
1	B	178	VAL
1	B	189	ARG
1	B	191	LYS
1	B	200	GLU
1	B	223	THR

Continued on next page...

Continued from previous page...

Mol	Chain	Res	Type
1	B	232	SER
1	B	241	VAL
1	B	257	LYS
1	B	289	ASN
1	B	303	VAL
1	B	329	ARG
1	B	341	LEU
1	B	360	LEU

Sometimes sidechains can be flipped to improve hydrogen bonding and reduce clashes. All (16) such sidechains are listed below:

Mol	Chain	Res	Type
1	A	18	ASN
1	A	173	ASN
1	A	229	ASN
1	A	244	HIS
1	A	262	ASN
1	A	289	ASN
1	A	321	GLN
1	A	361	ASN
1	B	173	ASN
1	B	229	ASN
1	B	262	ASN
1	B	289	ASN
1	B	308	HIS
1	B	321	GLN
1	B	342	ASN
1	B	361	ASN

5.3.3 RNA [i](#)

There are no RNA molecules in this entry.

5.4 Non-standard residues in protein, DNA, RNA chains [i](#)

There are no non-standard protein/DNA/RNA residues in this entry.

5.5 Carbohydrates [i](#)

There are no monosaccharides in this entry.

5.6 Ligand geometry

Of 6 ligands modelled in this entry, 2 are monoatomic - leaving 4 for Mogul analysis.

In the following table, the Counts columns list the number of bonds (or angles) for which Mogul statistics could be retrieved, the number of bonds (or angles) that are observed in the model and the number of bonds (or angles) that are defined in the Chemical Component Dictionary. The Link column lists molecule types, if any, to which the group is linked. The Z score for a bond length (or angle) is the number of standard deviations the observed value is removed from the expected value. A bond length (or angle) with $|Z| > 2$ is considered an outlier worth inspection. RMSZ is the root-mean-square of all Z scores of the bond lengths (or angles).

Mol	Type	Chain	Res	Link	Bond lengths			Bond angles		
					Counts	RMSZ	# Z > 2	Counts	RMSZ	# Z > 2
4	K02	A	604	-	27,27,27	1.56	4 (14%)	34,38,38	2.00	10 (29%)
2	ADP	B	601	3	24,29,29	1.27	3 (12%)	29,45,45	1.82	6 (20%)
4	K02	B	604	-	27,27,27	1.83	4 (14%)	34,38,38	2.13	9 (26%)
2	ADP	A	601	3	24,29,29	1.40	4 (16%)	29,45,45	1.58	5 (17%)

In the following table, the Chirals column lists the number of chiral outliers, the number of chiral centers analysed, the number of these observed in the model and the number defined in the Chemical Component Dictionary. Similar counts are reported in the Torsion and Rings columns. '-' means no outliers of that kind were identified.

Mol	Type	Chain	Res	Link	Chirals	Torsions	Rings
4	K02	A	604	-	-	2/20/29/29	0/3/3/3
2	ADP	B	601	3	-	0/12/32/32	0/3/3/3
4	K02	B	604	-	-	4/20/29/29	0/3/3/3
2	ADP	A	601	3	-	1/12/32/32	0/3/3/3

All (15) bond length outliers are listed below:

Mol	Chain	Res	Type	Atoms	Z	Observed(Å)	Ideal(Å)
4	B	604	K02	C6-C5	5.68	1.40	1.36
4	A	604	K02	C12-S1	-4.71	1.67	1.73
4	B	604	K02	C12-S1	-4.26	1.68	1.73
4	B	604	K02	C12-N2	-3.87	1.34	1.38
4	A	604	K02	C6-C5	3.79	1.39	1.36
4	B	604	K02	C13-N2	-3.17	1.31	1.37
2	A	601	ADP	C2-N3	2.67	1.36	1.32
2	A	601	ADP	O4'-C1'	2.57	1.44	1.41
4	A	604	K02	C12-N2	-2.40	1.36	1.38
4	A	604	K02	C13-C14	2.38	1.51	1.47
2	B	601	ADP	O4'-C1'	2.33	1.44	1.41

Continued on next page...

Continued from previous page...

Mol	Chain	Res	Type	Atoms	Z	Observed(Å)	Ideal(Å)
2	A	601	ADP	C4-N3	2.29	1.38	1.35
2	A	601	ADP	C5-C4	2.20	1.46	1.40
2	B	601	ADP	C5-C4	2.03	1.46	1.40
2	B	601	ADP	PA-O2A	-2.01	1.45	1.55

All (30) bond angle outliers are listed below:

Mol	Chain	Res	Type	Atoms	Z	Observed(°)	Ideal(°)
4	B	604	K02	C7-C6-C5	7.58	131.84	125.86
2	B	601	ADP	N3-C2-N1	-5.33	120.34	128.68
4	A	604	K02	C7-C6-C5	4.50	129.41	125.86
2	A	601	ADP	C1'-N9-C4	-4.23	119.21	126.64
4	A	604	K02	C6-S1-C12	4.19	93.27	91.14
4	A	604	K02	O2-C3-N1	-4.17	116.01	122.67
4	B	604	K02	C6-S1-C12	4.06	93.21	91.14
4	B	604	K02	C13-N2-C12	-3.75	122.30	125.26
2	B	601	ADP	C2-N1-C6	3.50	124.74	118.75
2	A	601	ADP	N3-C2-N1	-3.24	123.62	128.68
4	A	604	K02	C16-C15-S2	-3.08	105.55	113.01
4	B	604	K02	C7-C8-C9	3.08	120.57	112.63
4	A	604	K02	C8-C9-C11	3.04	118.10	110.03
2	B	601	ADP	C1'-N9-C4	-2.94	121.48	126.64
4	A	604	K02	C14-C13-N2	2.94	118.63	115.54
2	A	601	ADP	O3'-C3'-C4'	-2.90	102.67	111.05
4	B	604	K02	C8-C9-C11	2.87	117.63	110.03
2	B	601	ADP	C4-C5-N7	-2.82	106.46	109.40
4	A	604	K02	C10-C9-C11	-2.79	105.37	111.27
4	B	604	K02	O2-C3-C4	-2.73	114.19	120.09
2	B	601	ADP	O3'-C3'-C4'	-2.63	103.45	111.05
4	A	604	K02	C4-C12-N2	2.61	127.30	124.61
4	A	604	K02	C13-N2-C12	-2.52	123.27	125.26
2	B	601	ADP	C3'-C2'-C1'	2.47	104.69	100.98
4	B	604	K02	C5-C6-S1	-2.45	110.43	112.47
4	A	604	K02	C15-S2-C14	2.41	96.61	92.32
4	B	604	K02	C8-C7-C6	-2.34	106.01	110.39
2	A	601	ADP	C5'-C4'-C3'	-2.13	107.19	115.18
4	B	604	K02	O1-C13-C14	2.06	123.94	120.84
2	A	601	ADP	C2-N1-C6	2.05	122.26	118.75

There are no chirality outliers.

All (7) torsion outliers are listed below:

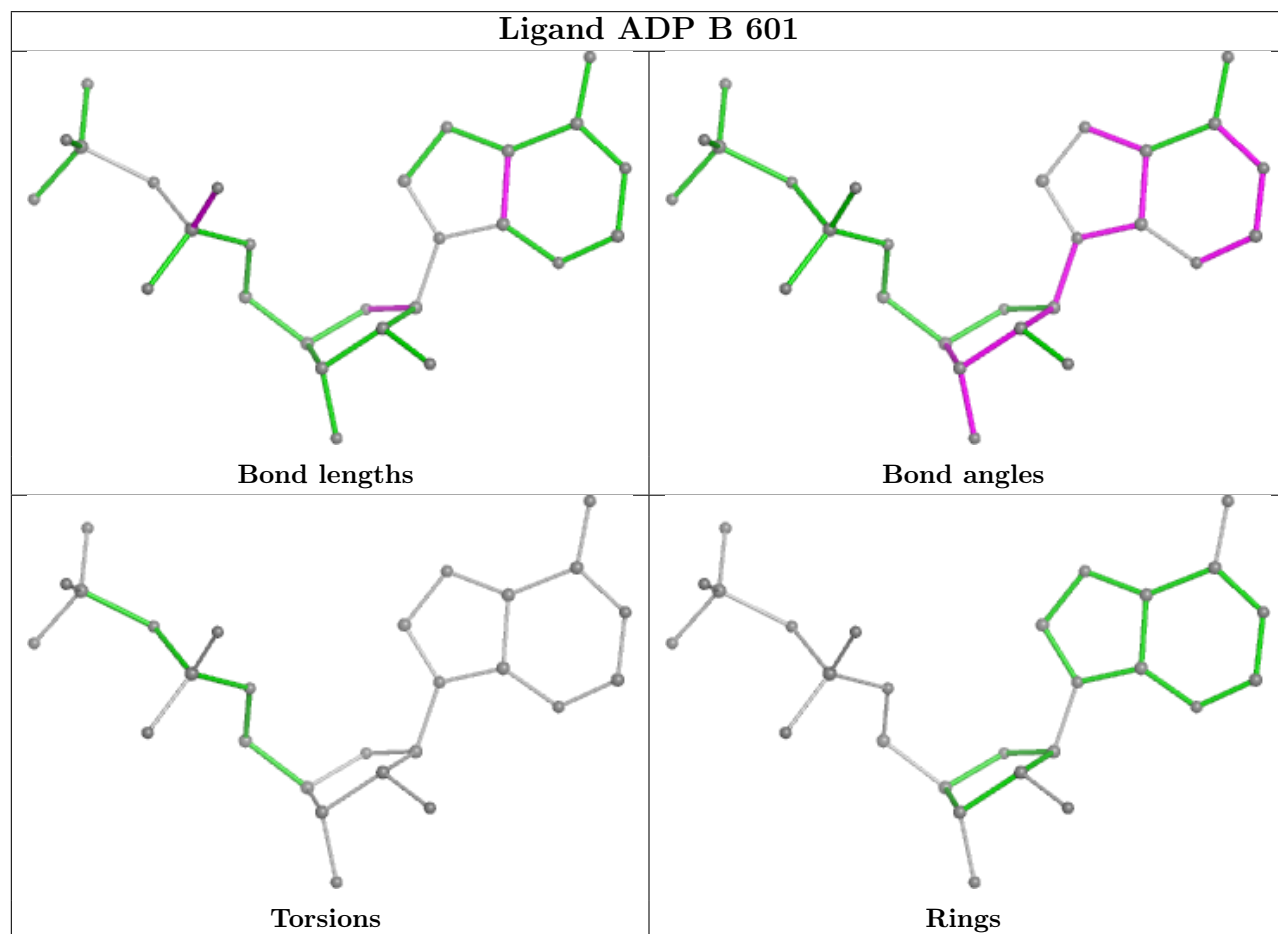
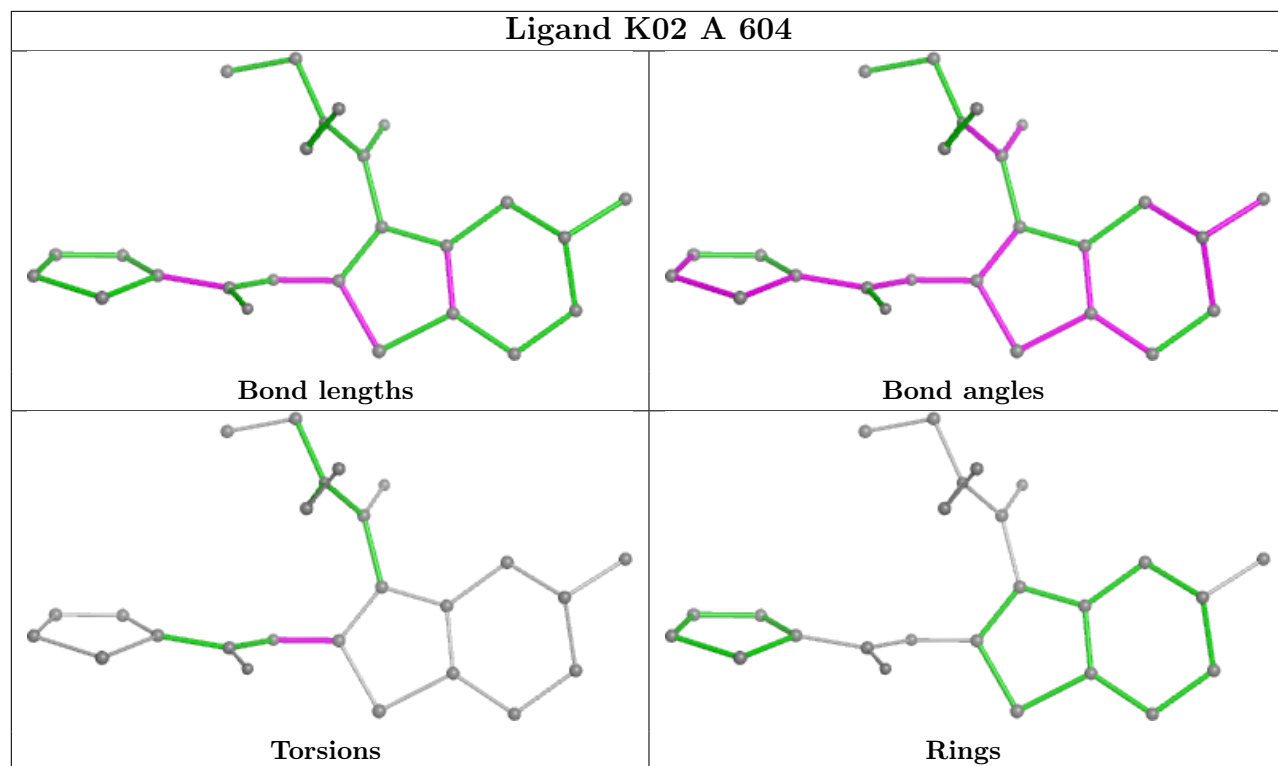
Mol	Chain	Res	Type	Atoms
2	A	601	ADP	C5'-O5'-PA-O1A
4	A	604	K02	S1-C12-N2-C13
4	A	604	K02	C4-C12-N2-C13
4	B	604	K02	S1-C12-N2-C13
4	B	604	K02	C4-C12-N2-C13
4	B	604	K02	C1-C2-N1-C3
4	B	604	K02	C1-C2-N1-C18

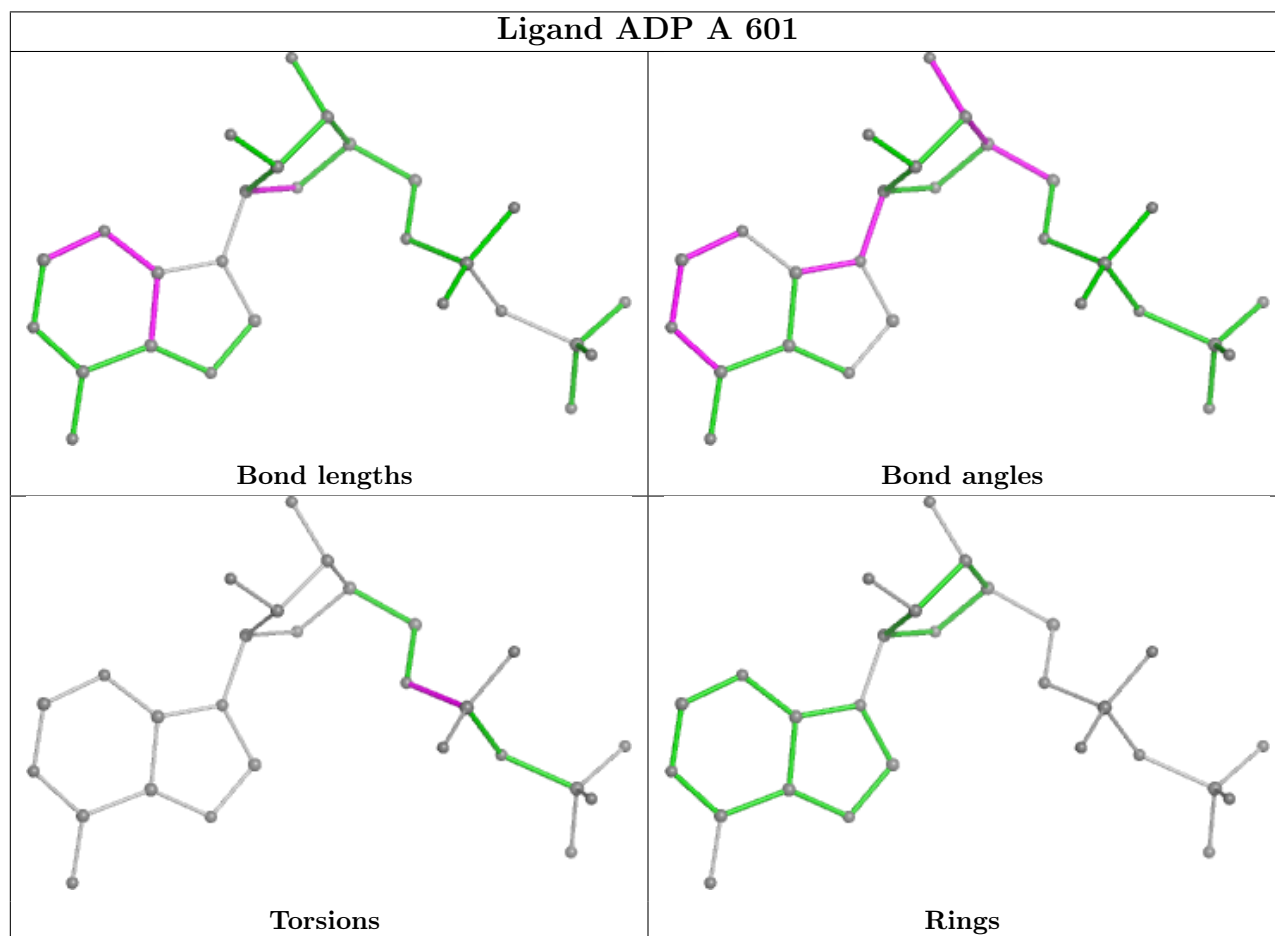
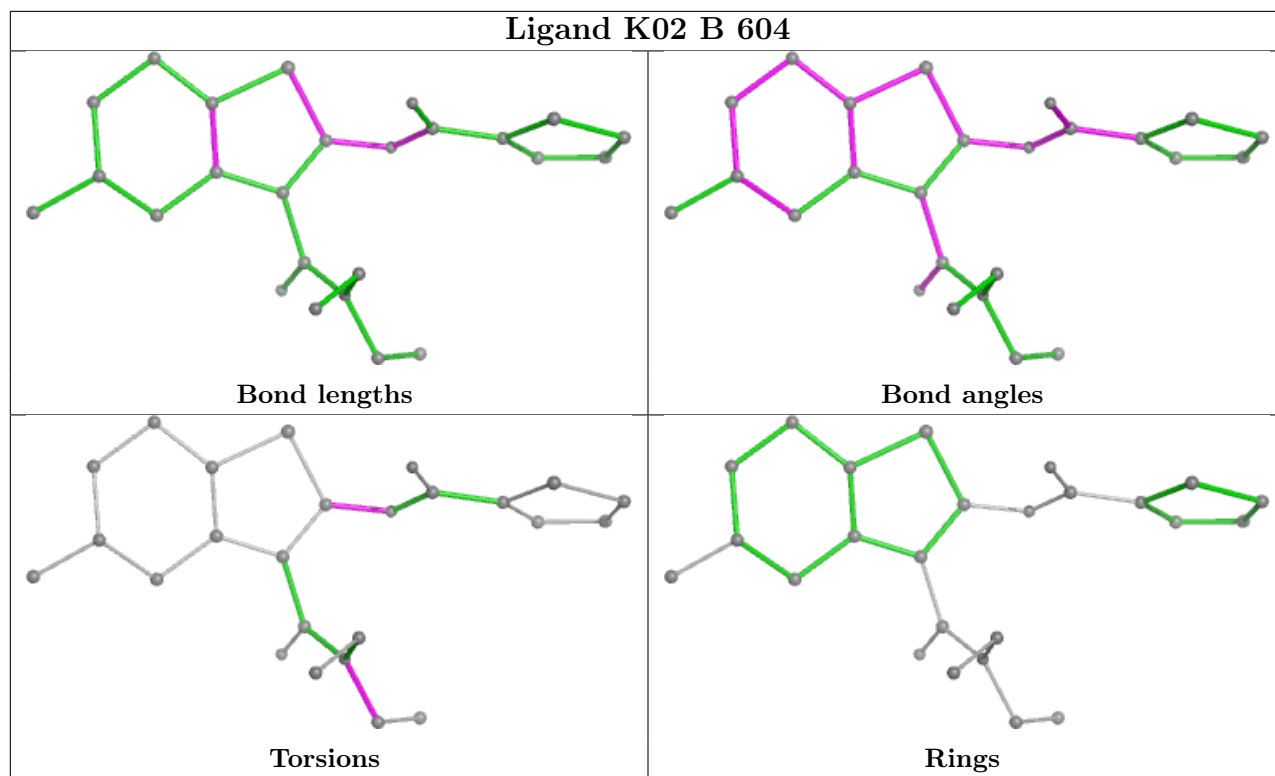
There are no ring outliers.

1 monomer is involved in 1 short contact:

Mol	Chain	Res	Type	Clashes	Symm-Clashes
4	A	604	K02	1	0

The following is a two-dimensional graphical depiction of Mogul quality analysis of bond lengths, bond angles, torsion angles, and ring geometry for all instances of the Ligand of Interest. In addition, ligands with molecular weight > 250 and outliers as shown on the validation Tables will also be included. For torsion angles, if less than 5% of the Mogul distribution of torsion angles is within 10 degrees of the torsion angle in question, then that torsion angle is considered an outlier. Any bond that is central to one or more torsion angles identified as an outlier by Mogul will be highlighted in the graph. For rings, the root-mean-square deviation (RMSD) between the ring in question and similar rings identified by Mogul is calculated over all ring torsion angles. If the average RMSD is greater than 60 degrees and the minimal RMSD between the ring in question and any Mogul-identified rings is also greater than 60 degrees, then that ring is considered an outlier. The outliers are highlighted in purple. The color gray indicates Mogul did not find sufficient equivalents in the CSD to analyse the geometry.





5.7 Other polymers [i](#)

There are no such residues in this entry.

5.8 Polymer linkage issues [i](#)

There are no chain breaks in this entry.

6 Fit of model and data

6.1 Protein, DNA and RNA chains

In the following table, the column labelled ‘#RSRZ > 2’ contains the number (and percentage) of RSRZ outliers, followed by percent RSRZ outliers for the chain as percentile scores relative to all X-ray entries and entries of similar resolution. The OWAB column contains the minimum, median, 95th percentile and maximum values of the occupancy-weighted average B-factor per residue. The column labelled ‘Q < 0.9’ lists the number of (and percentage) of residues with an average occupancy less than 0.9.

Mol	Chain	Analysed	<RSRZ>	#RSRZ>2	OWAB(Å ²)	Q<0.9
1	A	331/368 (89%)	0.27	21 (6%) 20 24	12, 30, 57, 70	0
1	B	331/368 (89%)	0.10	15 (4%) 33 38	13, 31, 58, 64	0
All	All	662/736 (89%)	0.19	36 (5%) 25 31	12, 31, 57, 70	0

All (36) RSRZ outliers are listed below:

Mol	Chain	Res	Type	RSRZ
1	A	149	ASP	7.7
1	A	250	ILE	6.4
1	A	58	ALA	4.9
1	A	57	LEU	4.9
1	A	192	ARG	4.6
1	B	175	SER	4.5
1	B	57	LEU	4.4
1	B	58	ALA	4.3
1	A	248	THR	4.2
1	A	60	LYS	4.0
1	B	192	ARG	4.0
1	A	56	GLY	3.9
1	B	17	LYS	3.8
1	A	34	LYS	3.7
1	A	36	SER	3.7
1	A	249	THR	3.7
1	A	16	GLY	3.5
1	A	190	ASN	3.5
1	B	16	GLY	3.4
1	B	178	VAL	3.1
1	A	360	LEU	2.9
1	B	56	GLY	2.8
1	A	148	THR	2.7
1	B	190	ASN	2.7

Continued on next page...

Continued from previous page...

Mol	Chain	Res	Type	RSRZ
1	A	97	TYR	2.7
1	B	38	HIS	2.6
1	B	34	LYS	2.6
1	B	35	ALA	2.5
1	A	253	GLU	2.5
1	A	251	ASP	2.3
1	B	33	ARG	2.2
1	A	181	ARG	2.1
1	B	360	LEU	2.1
1	A	271	ASN	2.0
1	B	305	ARG	2.0
1	A	38	HIS	2.0

6.2 Non-standard residues in protein, DNA, RNA chains [i](#)

There are no non-standard protein/DNA/RNA residues in this entry.

6.3 Carbohydrates [i](#)

There are no monosaccharides in this entry.

6.4 Ligands [i](#)

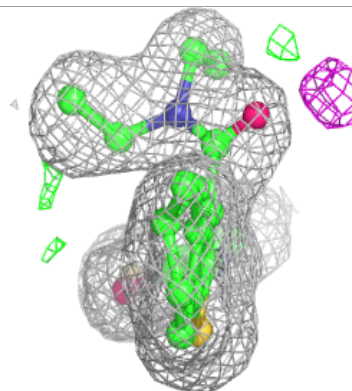
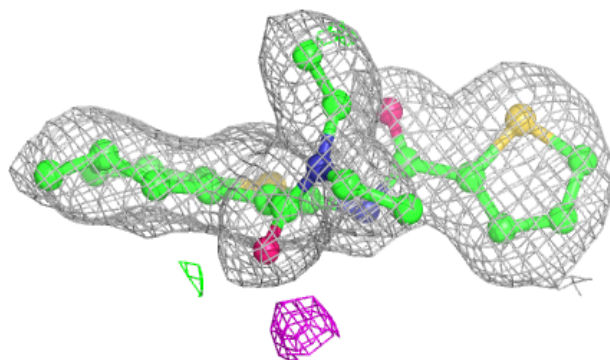
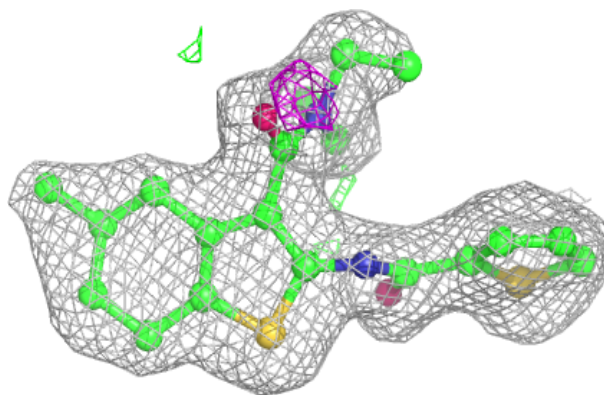
In the following table, the Atoms column lists the number of modelled atoms in the group and the number defined in the chemical component dictionary. The B-factors column lists the minimum, median, 95th percentile and maximum values of B factors of atoms in the group. The column labelled 'Q< 0.9' lists the number of atoms with occupancy less than 0.9.

Mol	Type	Chain	Res	Atoms	RSCC	RSR	B-factors(Å ²)	Q<0.9
4	K02	A	604	25/25	0.95	0.12	10,21,28,32	0
4	K02	B	604	25/25	0.95	0.10	17,24,32,37	0
2	ADP	B	601	27/27	0.98	0.10	13,30,34,34	0
3	MG	B	603	1/1	0.98	0.16	23,23,23,23	0
3	MG	A	603	1/1	0.99	0.16	18,18,18,18	0
2	ADP	A	601	27/27	0.99	0.09	13,25,31,32	0

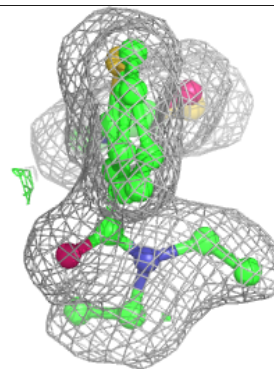
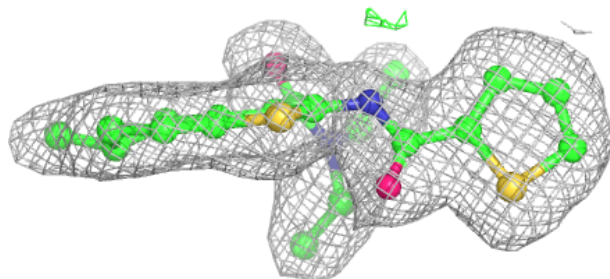
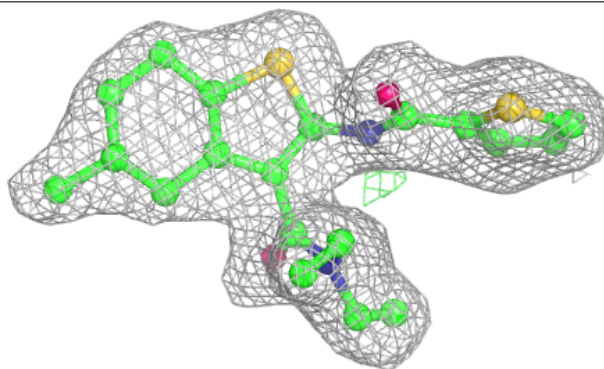
The following is a graphical depiction of the model fit to experimental electron density of all instances of the Ligand of Interest. In addition, ligands with molecular weight > 250 and outliers as shown on the geometry validation Tables will also be included. Each fit is shown from different orientation to approximate a three-dimensional view.

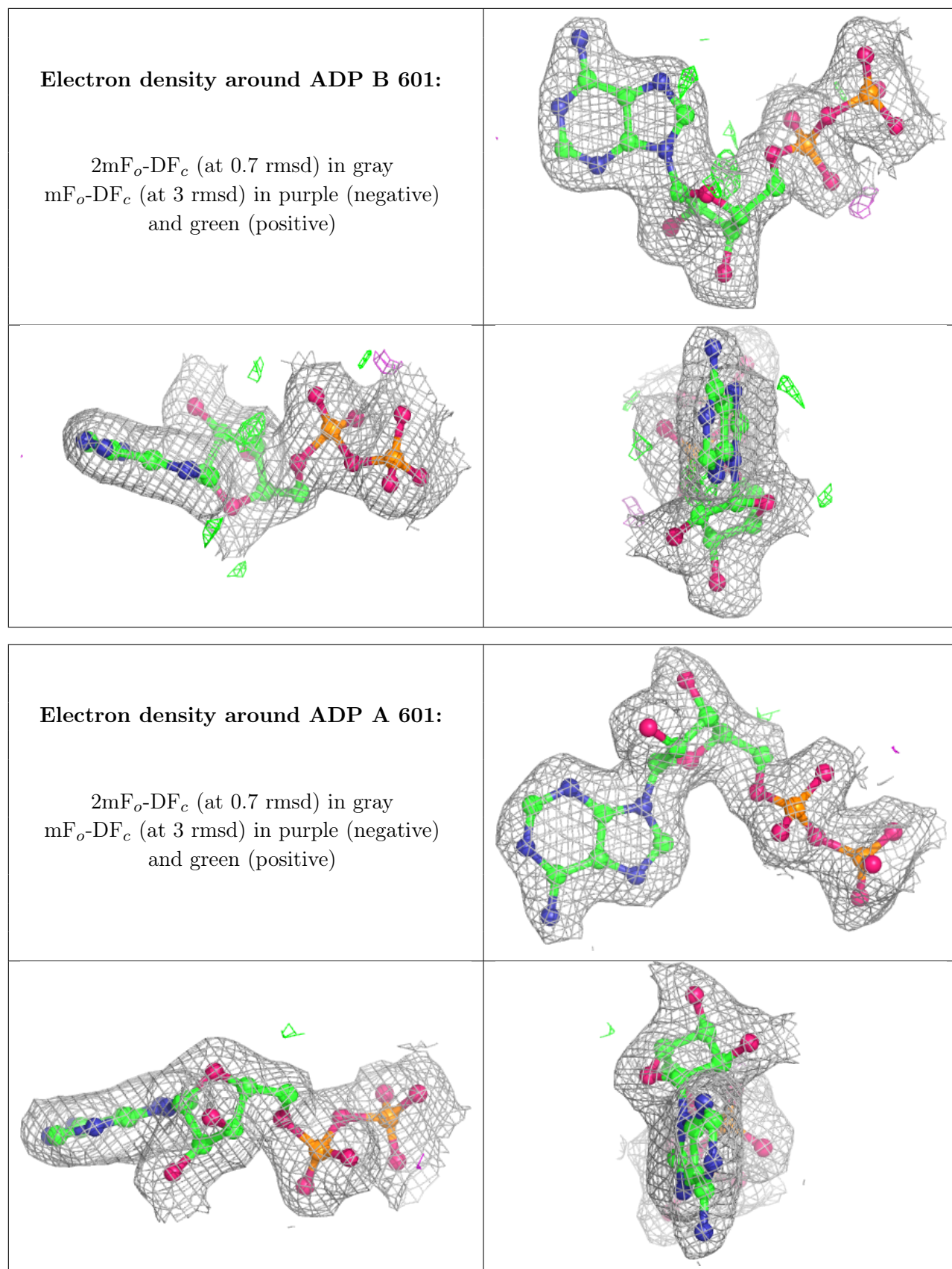
Electron density around K02 A 604:

$2mF_o-DF_c$ (at 0.7 rmsd) in gray
 mF_o-DF_c (at 3 rmsd) in purple (negative)
and green (positive)

**Electron density around K02 B 604:**

$2mF_o-DF_c$ (at 0.7 rmsd) in gray
 mF_o-DF_c (at 3 rmsd) in purple (negative)
and green (positive)





6.5 Other polymers [i](#)

There are no such residues in this entry.