



Full wwPDB X-ray Structure Validation Report ⓘ

Aug 22, 2023 – 09:56 AM EDT

PDB ID : 2RCM
Title : Crystal Structure of Arabidopsis thaliana Allene Oxide Synthase variant (F137L) (At-AOS(F137L), cytochrome P450 74A) at 1.73 Å Resolution
Authors : Lee, D.S.; Nioche, P.; Raman, C.S.
Deposited on : 2007-09-20
Resolution : 1.73 Å (reported)

This is a Full wwPDB X-ray Structure Validation Report for a publicly released PDB entry.

We welcome your comments at validation@mail.wwpdb.org

A user guide is available at

<https://www.wwpdb.org/validation/2017/XrayValidationReportHelp>

with specific help available everywhere you see the ⓘ symbol.

The types of validation reports are described at

<http://www.wwpdb.org/validation/2017/FAQs#types>.

The following versions of software and data (see [references ⓘ](#)) were used in the production of this report:

MolProbity : 4.02b-467
Mogul : 1.8.5 (274361), CSD as541be (2020)
Xtriage (Phenix) : 1.13
EDS : 2.35
buster-report : 1.1.7 (2018)
Percentile statistics : 20191225.v01 (using entries in the PDB archive December 25th 2019)
Refmac : 5.8.0158
CCP4 : 7.0.044 (Gargrove)
Ideal geometry (proteins) : Engh & Huber (2001)
Ideal geometry (DNA, RNA) : Parkinson et al. (1996)
Validation Pipeline (wwPDB-VP) : 2.35

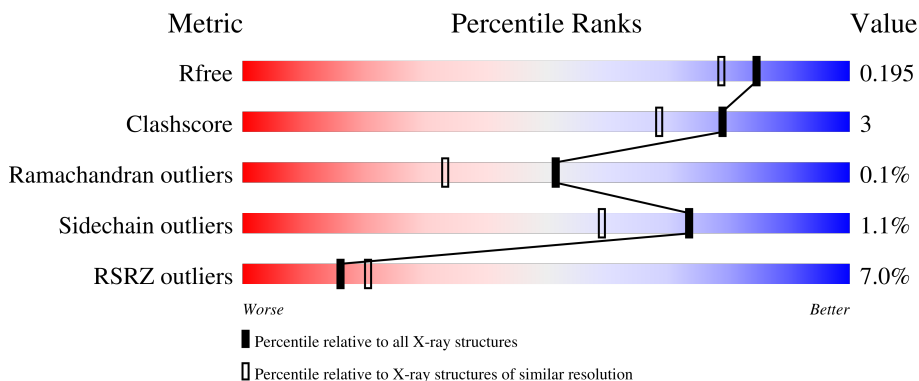
1 Overall quality at a glance

The following experimental techniques were used to determine the structure:

X-RAY DIFFRACTION

The reported resolution of this entry is 1.73 Å.

Percentile scores (ranging between 0-100) for global validation metrics of the entry are shown in the following graphic. The table shows the number of entries on which the scores are based.



Metric	Whole archive (#Entries)	Similar resolution (#Entries, resolution range(Å))
R_{free}	130704	3764 (1.76-1.72)
Clashscore	141614	3923 (1.76-1.72)
Ramachandran outliers	138981	3878 (1.76-1.72)
Sidechain outliers	138945	3878 (1.76-1.72)
RSRZ outliers	127900	3705 (1.76-1.72)

The table below summarises the geometric issues observed across the polymeric chains and their fit to the electron density. The red, orange, yellow and green segments of the lower bar indicate the fraction of residues that contain outliers for ≥ 3 , 2, 1 and 0 types of geometric quality criteria respectively. A grey segment represents the fraction of residues that are not modelled. The numeric value for each fraction is indicated below the corresponding segment, with a dot representing fractions $\leq 5\%$. The upper red bar (where present) indicates the fraction of residues that have poor fit to the electron density. The numeric value is given above the bar.

Mol	Chain	Length	Quality of chain
1	A	495	 6% 90% 6%
1	B	495	 7% 86% 7% 6%

2 Entry composition [i](#)

There are 4 unique types of molecules in this entry. The entry contains 8384 atoms, of which 0 are hydrogens and 0 are deuteriums.

In the tables below, the ZeroOcc column contains the number of atoms modelled with zero occupancy, the AltConf column contains the number of residues with at least one atom in alternate conformation and the Trace column contains the number of residues modelled with at most 2 atoms.

- Molecule 1 is a protein called Cytochrome P450 74A.

Mol	Chain	Residues	Atoms					ZeroOcc	AltConf	Trace
			Total	C	N	O	S			
1	A	465	3778	2435	638	695	10	0	9	0
1	B	465	3746	2421	628	687	10	0	5	0

There are 22 discrepancies between the modelled and reference sequences:

Chain	Residue	Modelled	Actual	Comment	Reference
A	28	MET	-	expression tag	UNP Q96242
A	29	ALA	-	expression tag	UNP Q96242
A	30	LYS	-	expression tag	UNP Q96242
A	31	LYS	-	expression tag	UNP Q96242
A	32	THR	-	expression tag	UNP Q96242
A	33	SER	-	expression tag	UNP Q96242
A	137	LEU	PHE	engineered mutation	UNP Q96242
A	519	HIS	-	expression tag	UNP Q96242
A	520	HIS	-	expression tag	UNP Q96242
A	521	HIS	-	expression tag	UNP Q96242
A	522	HIS	-	expression tag	UNP Q96242
B	28	MET	-	expression tag	UNP Q96242
B	29	ALA	-	expression tag	UNP Q96242
B	30	LYS	-	expression tag	UNP Q96242
B	31	LYS	-	expression tag	UNP Q96242
B	32	THR	-	expression tag	UNP Q96242
B	33	SER	-	expression tag	UNP Q96242
B	137	LEU	PHE	engineered mutation	UNP Q96242
B	519	HIS	-	expression tag	UNP Q96242
B	520	HIS	-	expression tag	UNP Q96242
B	521	HIS	-	expression tag	UNP Q96242
B	522	HIS	-	expression tag	UNP Q96242

- Molecule 2 is PROTOPORPHYRIN IX CONTAINING FE (three-letter code: HEM) (formula: C₃₄H₃₂FeN₄O₄).



Mol	Chain	Residues	Atoms				ZeroOcc	AltConf	
2	A	1	Total	C	Fe	N	O	0	0
			43	34	1	4	4		
2	B	1	Total	C	Fe	N	O	0	0
			43	34	1	4	4		

- Molecule 3 is GLYCEROL (three-letter code: GOL) (formula: $C_3H_8O_3$).



Mol	Chain	Residues	Atoms			ZeroOcc	AltConf
3	B	1	Total	C	O	0	0
			6	3	3		

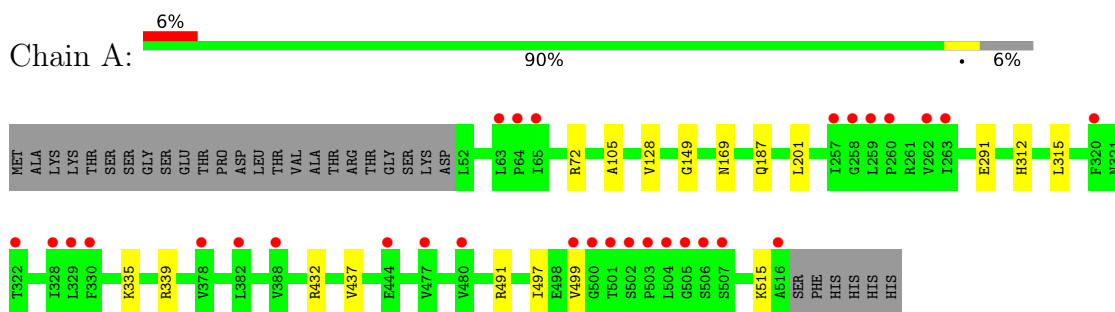
- Molecule 4 is water.

Mol	Chain	Residues	Atoms		ZeroOcc	AltConf
4	A	398	Total 398	O 398	0	0
4	B	370	Total 370	O 370	0	0

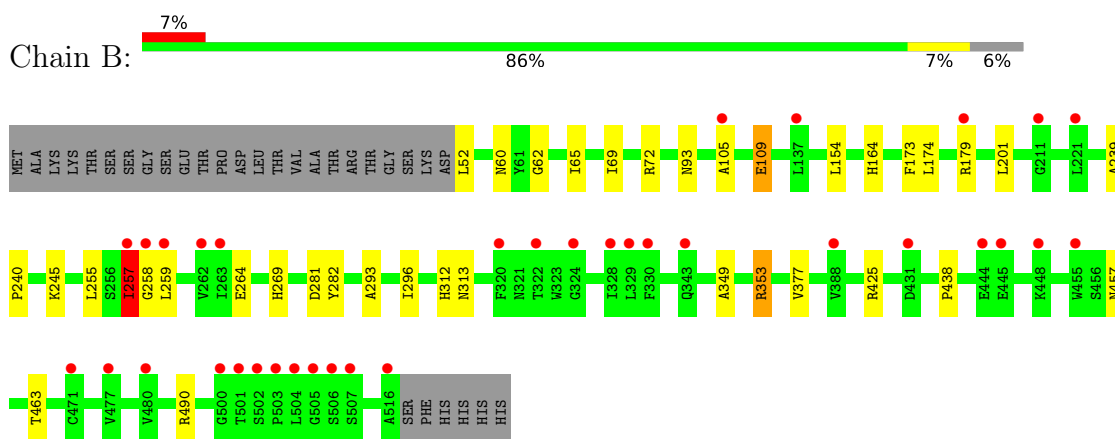
3 Residue-property plots [i](#)

These plots are drawn for all protein, RNA, DNA and oligosaccharide chains in the entry. The first graphic for a chain summarises the proportions of the various outlier classes displayed in the second graphic. The second graphic shows the sequence view annotated by issues in geometry and electron density. Residues are color-coded according to the number of geometric quality criteria for which they contain at least one outlier: green = 0, yellow = 1, orange = 2 and red = 3 or more. A red dot above a residue indicates a poor fit to the electron density ($RSRZ > 2$). Stretches of 2 or more consecutive residues without any outlier are shown as a green connector. Residues present in the sample, but not in the model, are shown in grey.

- Molecule 1: Cytochrome P450 74A



- Molecule 1: Cytochrome P450 74A



4 Data and refinement statistics

Property	Value	Source
Space group	P 21 21 21	Depositor
Cell constants a, b, c, α , β , γ	63.45Å 105.28Å 162.49Å 90.00° 90.00° 90.00°	Depositor
Resolution (Å)	88.39 – 1.73 32.54 – 1.73	Depositor EDS
% Data completeness (in resolution range)	99.2 (88.39-1.73) 99.2 (32.54-1.73)	Depositor EDS
R_{merge}	(Not available)	Depositor
R_{sym}	(Not available)	Depositor
$\langle I/\sigma(I) \rangle$ ¹	2.29 (at 1.73Å)	Xtrriage
Refinement program	REFMAC 5.2.0019	Depositor
R, R_{free}	0.172 , 0.198 0.171 , 0.195	Depositor DCC
R_{free} test set	5714 reflections (5.01%)	wwPDB-VP
Wilson B-factor (Å ²)	22.4	Xtrriage
Anisotropy	0.127	Xtrriage
Bulk solvent k_{sol} (e/Å ³), B_{sol} (Å ²)	0.37 , 44.1	EDS
L-test for twinning ²	$\langle L \rangle = 0.49$, $\langle L^2 \rangle = 0.32$	Xtrriage
Estimated twinning fraction	No twinning to report.	Xtrriage
F_o, F_c correlation	0.96	EDS
Total number of atoms	8384	wwPDB-VP
Average B, all atoms (Å ²)	25.0	wwPDB-VP

Xtrriage's analysis on translational NCS is as follows: *The largest off-origin peak in the Patterson function is 3.38% of the height of the origin peak. No significant pseudotranslation is detected.*

¹Intensities estimated from amplitudes.

²Theoretical values of $\langle |L| \rangle$, $\langle L^2 \rangle$ for acentric reflections are 0.5, 0.333 respectively for untwinned datasets, and 0.375, 0.2 for perfectly twinned datasets.

5 Model quality i

5.1 Standard geometry i

Bond lengths and bond angles in the following residue types are not validated in this section: GOL, HEM

The Z score for a bond length (or angle) is the number of standard deviations the observed value is removed from the expected value. A bond length (or angle) with $|Z| > 5$ is considered an outlier worth inspection. RMSZ is the root-mean-square of all Z scores of the bond lengths (or angles).

Mol	Chain	Bond lengths		Bond angles	
		RMSZ	# Z >5	RMSZ	# Z >5
1	A	0.61	0/3870	0.63	0/5232
1	B	0.59	0/3838	0.65	2/5192 (0.0%)
All	All	0.60	0/7708	0.64	2/10424 (0.0%)

There are no bond length outliers.

All (2) bond angle outliers are listed below:

Mol	Chain	Res	Type	Atoms	Z	Observed(°)	Ideal(°)
1	B	353	ARG	NE-CZ-NH1	10.83	125.72	120.30
1	B	353	ARG	NE-CZ-NH2	-7.95	116.32	120.30

There are no chirality outliers.

There are no planarity outliers.

5.2 Too-close contacts i

In the following table, the Non-H and H(model) columns list the number of non-hydrogen atoms and hydrogen atoms in the chain respectively. The H(added) column lists the number of hydrogen atoms added and optimized by MolProbity. The Clashes column lists the number of clashes within the asymmetric unit, whereas Symm-Clashes lists symmetry-related clashes.

Mol	Chain	Non-H	H(model)	H(added)	Clashes	Symm-Clashes
1	A	3778	0	3773	12	0
1	B	3746	0	3749	28	0
2	A	43	0	30	0	0
2	B	43	0	30	4	0
3	B	6	0	8	0	0
4	A	398	0	0	3	0
4	B	370	0	0	4	0

Continued on next page...

Continued from previous page...

Mol	Chain	Non-H	H(model)	H(added)	Clashes	Symm-Clashes
All	All	8384	0	7590	42	0

The all-atom clashscore is defined as the number of clashes found per 1000 atoms (including hydrogen atoms). The all-atom clashscore for this structure is 3.

All (42) close contacts within the same asymmetric unit are listed below, sorted by their clash magnitude.

Atom-1	Atom-2	Interatomic distance (Å)	Clash overlap (Å)
1:B:72:ARG:HH22	1:B:105:ALA:HB2	1.22	1.02
1:B:72:ARG:NH2	1:B:105:ALA:HB2	1.90	0.85
1:A:432[A]:ARG:HH11	1:A:437:VAL:HG21	1.44	0.80
1:A:291:GLU:HG3	4:A:958:HOH:O	1.84	0.77
1:A:432[A]:ARG:NH1	1:A:437:VAL:HG21	2.02	0.74
1:B:93[B]:ASN:ND2	4:B:758:HOH:O	2.21	0.74
2:B:600:HEM:HHD	2:B:600:HEM:HBC2	1.70	0.73
1:B:425:ARG:NH2	4:B:736:HOH:O	2.22	0.71
1:B:349:ALA:O	1:B:353:ARG:HG3	1.90	0.70
1:B:154:LEU:H	1:B:313:ASN:HD21	1.41	0.68
1:B:255:LEU:O	1:B:269:HIS:HE1	1.79	0.65
1:A:339:ARG:HH21	1:A:499:VAL:HG21	1.63	0.64
1:A:72:ARG:HH12	1:A:105:ALA:HB2	1.62	0.64
1:B:105:ALA:HB3	4:B:927:HOH:O	1.98	0.64
1:A:339:ARG:NH2	1:A:499:VAL:HG21	2.13	0.63
1:B:282:TYR:OH	1:B:312:HIS:HD2	1.82	0.63
1:B:60:ASN:HD22	1:B:62:GLY:H	1.50	0.59
1:B:353:ARG:HD3	1:B:490:ARG:HA	1.85	0.59
1:B:164:HIS:HE1	2:B:600:HEM:O2D	1.86	0.58
1:B:154:LEU:H	1:B:313:ASN:ND2	2.03	0.57
1:B:293:ALA:HB1	1:B:296[A]:ILE:CG2	2.40	0.51
1:B:164:HIS:HD2	4:B:652:HOH:O	1.94	0.51
1:B:257:ILE:HG22	1:B:258:GLY:H	1.77	0.50
1:B:109:GLU:H	1:B:109:GLU:CD	2.16	0.48
1:B:174:LEU:HD13	1:B:296[B]:ILE:HG13	1.95	0.48
1:B:173:PHE:HD2	1:B:296[A]:ILE:CD1	2.28	0.47
1:A:149:GLY:HA3	1:A:312:HIS:CE1	2.51	0.46
1:B:239:ALA:HB3	1:B:240:PRO:HD3	1.98	0.45
1:A:128:VAL:HG13	4:A:764:HOH:O	2.16	0.45
1:A:315:LEU:C	1:A:315:LEU:HD23	2.37	0.44
1:A:187[B]:GLN:HG2	4:A:966:HOH:O	2.15	0.44
1:B:259:LEU:HB2	1:B:264:GLU:CG	2.47	0.44
2:B:600:HEM:HBC2	2:B:600:HEM:CHD	2.44	0.43

Continued on next page...

Continued from previous page...

Atom-1	Atom-2	Interatomic distance (Å)	Clash overlap (Å)
1:B:377[A]:VAL:HG12	1:B:438:PRO:HB3	1.99	0.43
1:B:245:LYS:HD3	1:B:281:ASP:OD2	2.18	0.43
1:B:293:ALA:O	1:B:296[A]:ILE:HG22	2.19	0.43
1:B:65:ILE:O	1:B:69:ILE:HG12	2.19	0.43
1:B:255:LEU:O	1:B:269:HIS:CE1	2.66	0.42
1:A:169:ASN:HD22	1:A:169:ASN:HA	1.77	0.41
1:B:259:LEU:HB2	1:B:264:GLU:HG3	2.03	0.41
1:A:335:LYS:HA	1:A:497:ILE:CD1	2.51	0.40
1:B:457:ASN:HB2	2:B:600:HEM:HAA1	2.03	0.40

There are no symmetry-related clashes.

5.3 Torsion angles [i](#)

5.3.1 Protein backbone [i](#)

In the following table, the Percentiles column shows the percent Ramachandran outliers of the chain as a percentile score with respect to all X-ray entries followed by that with respect to entries of similar resolution.

The Analysed column shows the number of residues for which the backbone conformation was analysed, and the total number of residues.

Mol	Chain	Analysed	Favoured	Allowed	Outliers	Percentiles	
1	A	472/495 (95%)	461 (98%)	11 (2%)	0	100	100
1	B	468/495 (94%)	459 (98%)	8 (2%)	1 (0%)	47	29
All	All	940/990 (95%)	920 (98%)	19 (2%)	1 (0%)	51	33

All (1) Ramachandran outliers are listed below:

Mol	Chain	Res	Type
1	B	257	ILE

5.3.2 Protein sidechains [i](#)

In the following table, the Percentiles column shows the percent sidechain outliers of the chain as a percentile score with respect to all X-ray entries followed by that with respect to entries of similar resolution.

The Analysed column shows the number of residues for which the sidechain conformation was

analysed, and the total number of residues.

Mol	Chain	Analysed	Rotameric	Outliers	Percentiles	
1	A	409/426 (96%)	406 (99%)	3 (1%)	84	75
1	B	405/426 (95%)	399 (98%)	6 (2%)	65	47
All	All	814/852 (96%)	805 (99%)	9 (1%)	73	59

All (9) residues with a non-rotameric sidechain are listed below:

Mol	Chain	Res	Type
1	A	201	LEU
1	A	491	ARG
1	A	515	LYS
1	B	52	LEU
1	B	109	GLU
1	B	179	ARG
1	B	201	LEU
1	B	257	ILE
1	B	463	THR

Sometimes sidechains can be flipped to improve hydrogen bonding and reduce clashes. All (12) such sidechains are listed below:

Mol	Chain	Res	Type
1	A	100	ASN
1	A	180	ASN
1	A	332	ASN
1	A	359	ASN
1	A	452	HIS
1	B	60	ASN
1	B	100	ASN
1	B	164	HIS
1	B	269	HIS
1	B	312	HIS
1	B	313	ASN
1	B	332	ASN

5.3.3 RNA [i](#)

There are no RNA molecules in this entry.

5.4 Non-standard residues in protein, DNA, RNA chains [i](#)

There are no non-standard protein/DNA/RNA residues in this entry.

5.5 Carbohydrates [i](#)

There are no monosaccharides in this entry.

5.6 Ligand geometry [i](#)

3 ligands are modelled in this entry.

In the following table, the Counts columns list the number of bonds (or angles) for which Mogul statistics could be retrieved, the number of bonds (or angles) that are observed in the model and the number of bonds (or angles) that are defined in the Chemical Component Dictionary. The Link column lists molecule types, if any, to which the group is linked. The Z score for a bond length (or angle) is the number of standard deviations the observed value is removed from the expected value. A bond length (or angle) with $|Z| > 2$ is considered an outlier worth inspection. RMSZ is the root-mean-square of all Z scores of the bond lengths (or angles).

Mol	Type	Chain	Res	Link	Bond lengths			Bond angles		
					Counts	RMSZ	# Z > 2	Counts	RMSZ	# Z > 2
2	HEM	B	600	1	41,50,50	1.94	9 (21%)	45,82,82	2.03	11 (24%)
3	GOL	B	1	-	5,5,5	0.35	0	5,5,5	0.37	0
2	HEM	A	600	1	41,50,50	1.91	9 (21%)	45,82,82	2.05	13 (28%)

In the following table, the Chirals column lists the number of chiral outliers, the number of chiral centers analysed, the number of these observed in the model and the number defined in the Chemical Component Dictionary. Similar counts are reported in the Torsion and Rings columns. '2' means no outliers of that kind were identified.

Mol	Type	Chain	Res	Link	Chirals	Torsions	Rings
2	HEM	B	600	1	-	2/12/54/54	-
3	GOL	B	1	-	-	0/4/4/4	-
2	HEM	A	600	1	-	2/12/54/54	-

All (18) bond length outliers are listed below:

Mol	Chain	Res	Type	Atoms	Z	Observed(Å)	Ideal(Å)
2	B	600	HEM	C3D-C2D	6.68	1.50	1.36
2	A	600	HEM	C3D-C2D	6.38	1.50	1.36
2	A	600	HEM	C3C-C2C	-5.13	1.33	1.40
2	B	600	HEM	C3C-C2C	-4.67	1.33	1.40

Continued on next page...

Continued from previous page...

Mol	Chain	Res	Type	Atoms	Z	Observed(Å)	Ideal(Å)
2	B	600	HEM	C3C-CAC	3.74	1.55	1.47
2	A	600	HEM	C3C-CAC	3.73	1.55	1.47
2	B	600	HEM	CAB-C3B	3.24	1.56	1.47
2	A	600	HEM	CAB-C3B	2.62	1.54	1.47
2	B	600	HEM	FE-ND	2.60	2.09	1.96
2	A	600	HEM	FE-NB	2.41	2.08	1.96
2	A	600	HEM	FE-ND	2.33	2.08	1.96
2	B	600	HEM	CAA-C2A	2.32	1.55	1.52
2	A	600	HEM	CMD-C2D	2.21	1.55	1.50
2	A	600	HEM	C1B-NB	-2.18	1.36	1.40
2	B	600	HEM	CMB-C2B	2.16	1.55	1.50
2	A	600	HEM	CAA-C2A	2.15	1.55	1.52
2	B	600	HEM	C1A-NA	2.08	1.40	1.36
2	B	600	HEM	FE-NB	2.03	2.06	1.96

All (24) bond angle outliers are listed below:

Mol	Chain	Res	Type	Atoms	Z	Observed(°)	Ideal(°)
2	A	600	HEM	C4D-ND-C1D	6.70	111.99	105.07
2	B	600	HEM	C4D-ND-C1D	6.25	111.53	105.07
2	A	600	HEM	C1B-NB-C4B	5.06	110.30	105.07
2	B	600	HEM	CHD-C1D-ND	4.56	129.39	124.43
2	B	600	HEM	C4B-CHC-C1C	4.50	128.50	122.56
2	B	600	HEM	C1B-NB-C4B	3.96	109.16	105.07
2	A	600	HEM	C4B-CHC-C1C	3.79	127.56	122.56
2	B	600	HEM	C4C-CHD-C1D	3.51	127.18	122.56
2	B	600	HEM	CBD-CAD-C3D	-3.36	103.30	112.63
2	A	600	HEM	CHC-C4B-NB	3.23	127.94	124.43
2	A	600	HEM	CHD-C1D-ND	3.15	127.85	124.43
2	A	600	HEM	C3B-C2B-C1B	3.04	108.74	106.49
2	A	600	HEM	C2B-C1B-NB	-2.99	106.29	109.84
2	A	600	HEM	CBD-CAD-C3D	-2.83	104.78	112.63
2	A	600	HEM	CHA-C4D-ND	2.63	127.63	124.38
2	A	600	HEM	CMA-C3A-C4A	-2.62	124.43	128.46
2	A	600	HEM	C4C-CHD-C1D	2.42	125.75	122.56
2	B	600	HEM	C2B-C1B-NB	-2.38	107.02	109.84
2	B	600	HEM	CMD-C2D-C1D	2.30	128.54	125.04
2	A	600	HEM	C3D-C4D-ND	-2.26	107.65	110.17
2	B	600	HEM	C3B-C2B-C1B	2.22	108.13	106.49
2	A	600	HEM	CMD-C2D-C1D	2.17	128.34	125.04
2	B	600	HEM	C4A-C3A-C2A	2.15	108.49	107.00
2	B	600	HEM	O2D-CGD-CBD	2.04	120.59	114.03

There are no chirality outliers.

All (4) torsion outliers are listed below:

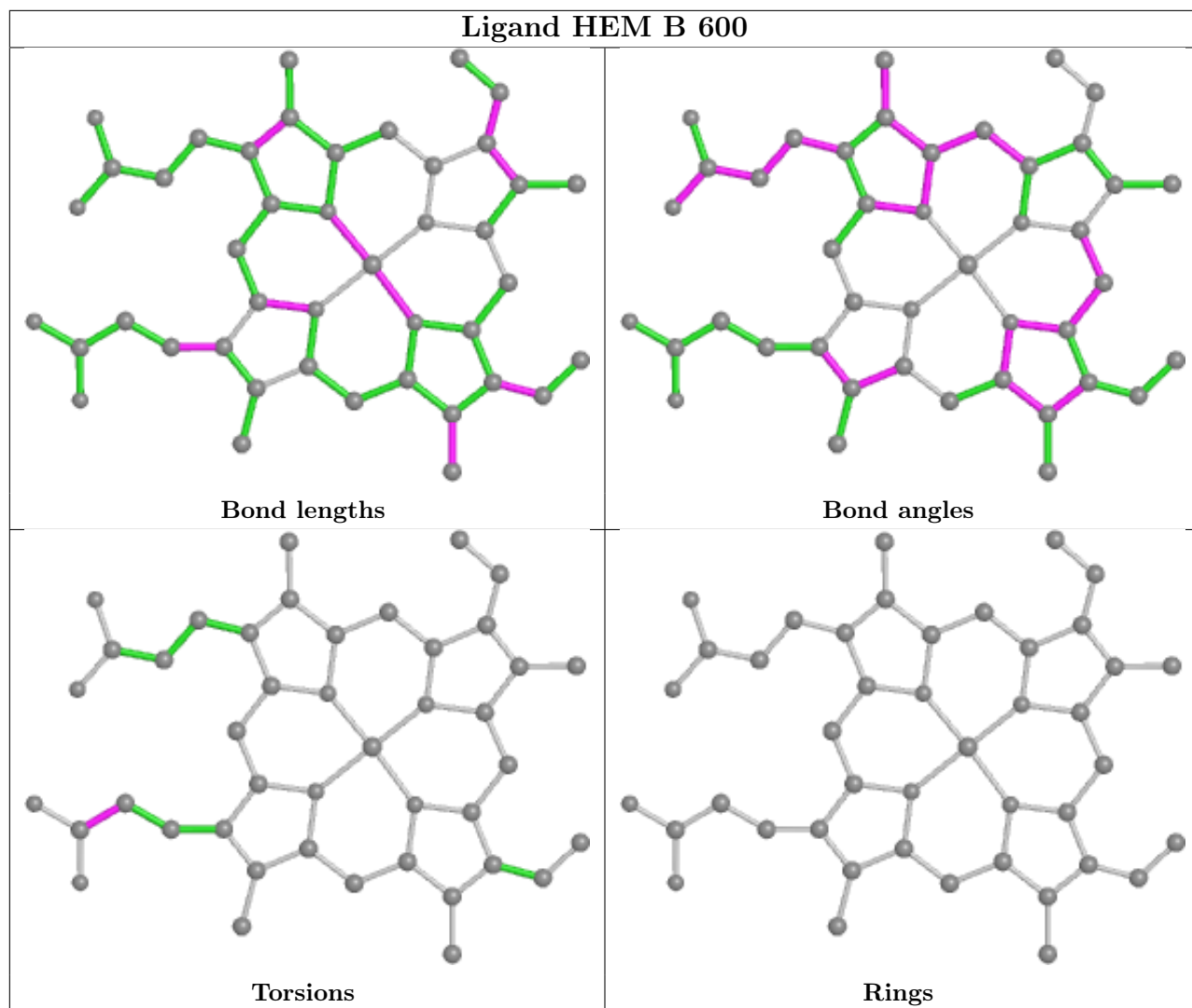
Mol	Chain	Res	Type	Atoms
2	B	600	HEM	CAA-CBA-CGA-O2A
2	B	600	HEM	CAA-CBA-CGA-O1A
2	A	600	HEM	CAA-CBA-CGA-O2A
2	A	600	HEM	CAA-CBA-CGA-O1A

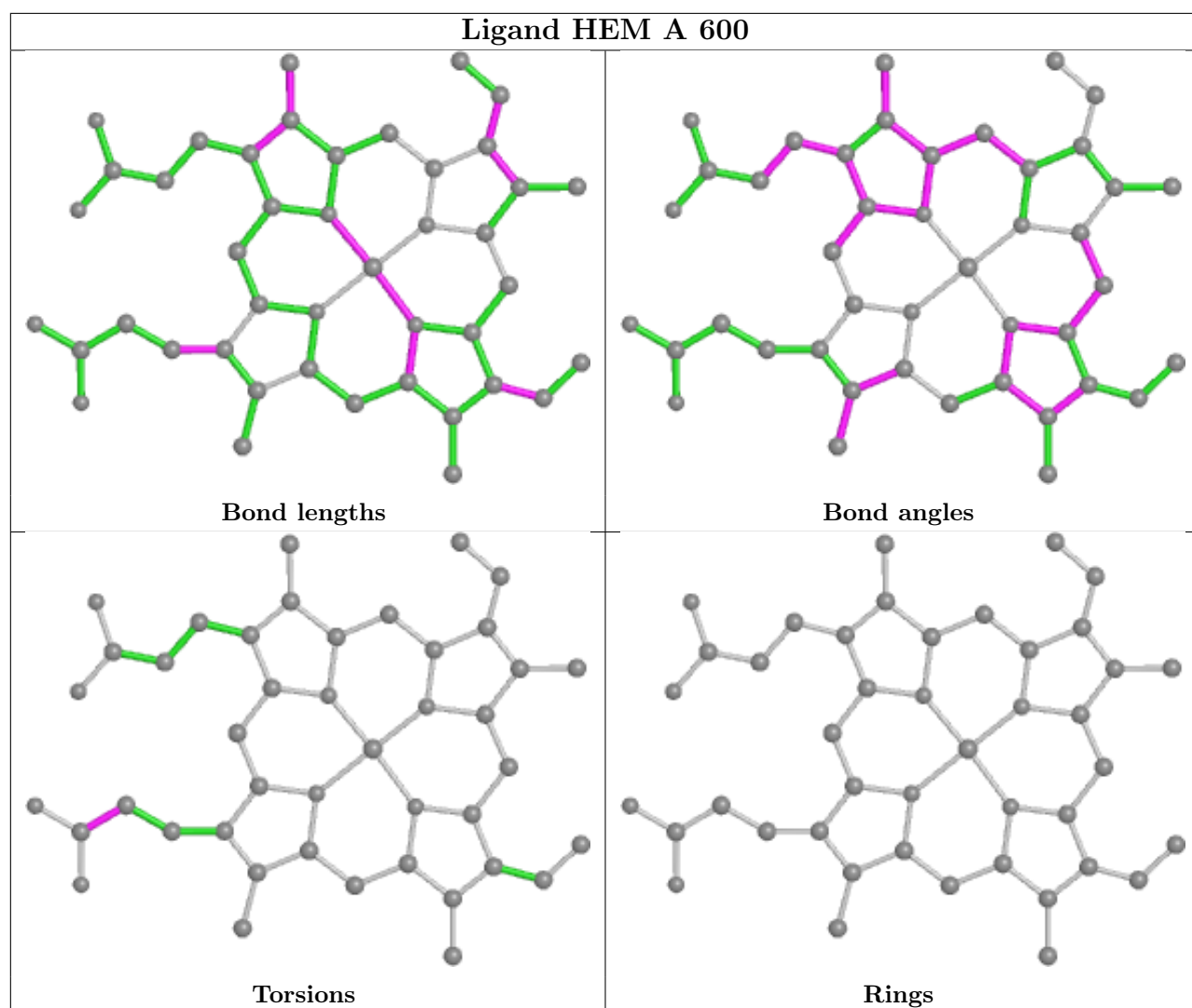
There are no ring outliers.

1 monomer is involved in 4 short contacts:

Mol	Chain	Res	Type	Clashes	Symm-Clashes
2	B	600	HEM	4	0

The following is a two-dimensional graphical depiction of Mogul quality analysis of bond lengths, bond angles, torsion angles, and ring geometry for all instances of the Ligand of Interest. In addition, ligands with molecular weight > 250 and outliers as shown on the validation Tables will also be included. For torsion angles, if less than 5% of the Mogul distribution of torsion angles is within 10 degrees of the torsion angle in question, then that torsion angle is considered an outlier. Any bond that is central to one or more torsion angles identified as an outlier by Mogul will be highlighted in the graph. For rings, the root-mean-square deviation (RMSD) between the ring in question and similar rings identified by Mogul is calculated over all ring torsion angles. If the average RMSD is greater than 60 degrees and the minimal RMSD between the ring in question and any Mogul-identified rings is also greater than 60 degrees, then that ring is considered an outlier. The outliers are highlighted in purple. The color gray indicates Mogul did not find sufficient equivalents in the CSD to analyse the geometry.





5.7 Other polymers [i](#)

There are no such residues in this entry.

5.8 Polymer linkage issues [i](#)

There are no chain breaks in this entry.

6 Fit of model and data [i](#)

6.1 Protein, DNA and RNA chains [i](#)

In the following table, the column labelled ‘#RSRZ > 2’ contains the number (and percentage) of RSRZ outliers, followed by percent RSRZ outliers for the chain as percentile scores relative to all X-ray entries and entries of similar resolution. The OWAB column contains the minimum, median, 95th percentile and maximum values of the occupancy-weighted average B-factor per residue. The column labelled ‘Q < 0.9’ lists the number of (and percentage) of residues with an average occupancy less than 0.9.

Mol	Chain	Analysed	<RSRZ>	#RSRZ>2	OWAB(Å ²)	Q<0.9
1	A	465/495 (93%)	0.36	30 (6%) 18 23	17, 22, 34, 59	0
1	B	465/495 (93%)	0.42	35 (7%) 14 18	16, 24, 35, 54	0
All	All	930/990 (93%)	0.39	65 (6%) 16 21	16, 23, 35, 59	0

All (65) RSRZ outliers are listed below:

Mol	Chain	Res	Type	RSRZ
1	B	504	LEU	12.7
1	B	503	PRO	9.8
1	A	504	LEU	8.7
1	B	501	THR	8.2
1	A	500	GLY	8.0
1	A	501	THR	7.7
1	A	502	SER	7.5
1	A	259	LEU	7.0
1	B	502	SER	6.9
1	A	503	PRO	6.4
1	B	506	SER	6.4
1	A	505	GLY	5.8
1	B	505	GLY	5.5
1	B	258	GLY	5.2
1	A	257[A]	ILE	5.0
1	A	499	VAL	4.7
1	A	65	ILE	4.6
1	A	507	SER	4.4
1	B	259	LEU	3.9
1	A	63	LEU	3.7
1	B	500	GLY	3.5
1	A	506	SER	3.4
1	B	516	ALA	3.2
1	B	388	VAL	3.2

Continued on next page...

Continued from previous page...

Mol	Chain	Res	Type	RSRZ
1	B	448	LYS	3.0
1	A	516	ALA	3.0
1	B	431	ASP	3.0
1	A	388	VAL	2.9
1	B	263	ILE	2.9
1	A	258	GLY	2.8
1	B	507	SER	2.7
1	A	262	VAL	2.7
1	B	471	CYS	2.7
1	A	263	ILE	2.7
1	B	257	ILE	2.7
1	B	221	LEU	2.6
1	B	444	GLU	2.6
1	A	330	PHE	2.6
1	B	262	VAL	2.6
1	B	445	GLU	2.5
1	A	320	PHE	2.5
1	B	105	ALA	2.5
1	A	477	VAL	2.5
1	A	64	PRO	2.5
1	B	137	LEU	2.5
1	B	329	LEU	2.5
1	B	477	VAL	2.4
1	A	329	LEU	2.4
1	B	322	THR	2.4
1	A	378	VAL	2.3
1	A	382	LEU	2.3
1	B	343	GLN	2.3
1	B	320	PHE	2.3
1	B	330	PHE	2.3
1	A	444	GLU	2.2
1	A	322	THR	2.2
1	B	179	ARG	2.1
1	B	328	ILE	2.1
1	A	480	VAL	2.1
1	B	211	GLY	2.1
1	B	480	VAL	2.1
1	B	455	TRP	2.1
1	B	324	GLY	2.1
1	A	328	ILE	2.0
1	A	260	PRO	2.0

6.2 Non-standard residues in protein, DNA, RNA chains [i](#)

There are no non-standard protein/DNA/RNA residues in this entry.

6.3 Carbohydrates [i](#)

There are no monosaccharides in this entry.

6.4 Ligands [i](#)

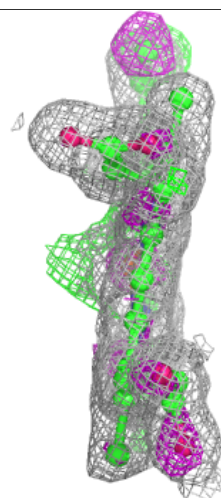
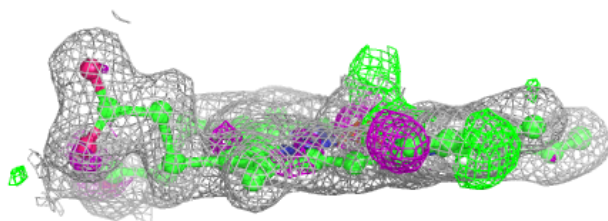
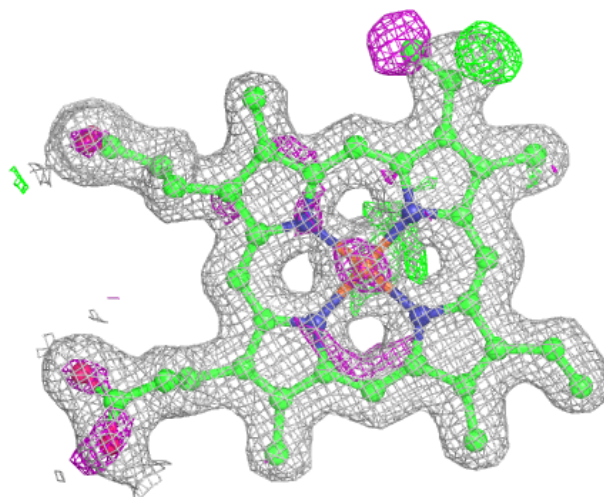
In the following table, the Atoms column lists the number of modelled atoms in the group and the number defined in the chemical component dictionary. The B-factors column lists the minimum, median, 95th percentile and maximum values of B factors of atoms in the group. The column labelled 'Q< 0.9' lists the number of atoms with occupancy less than 0.9.

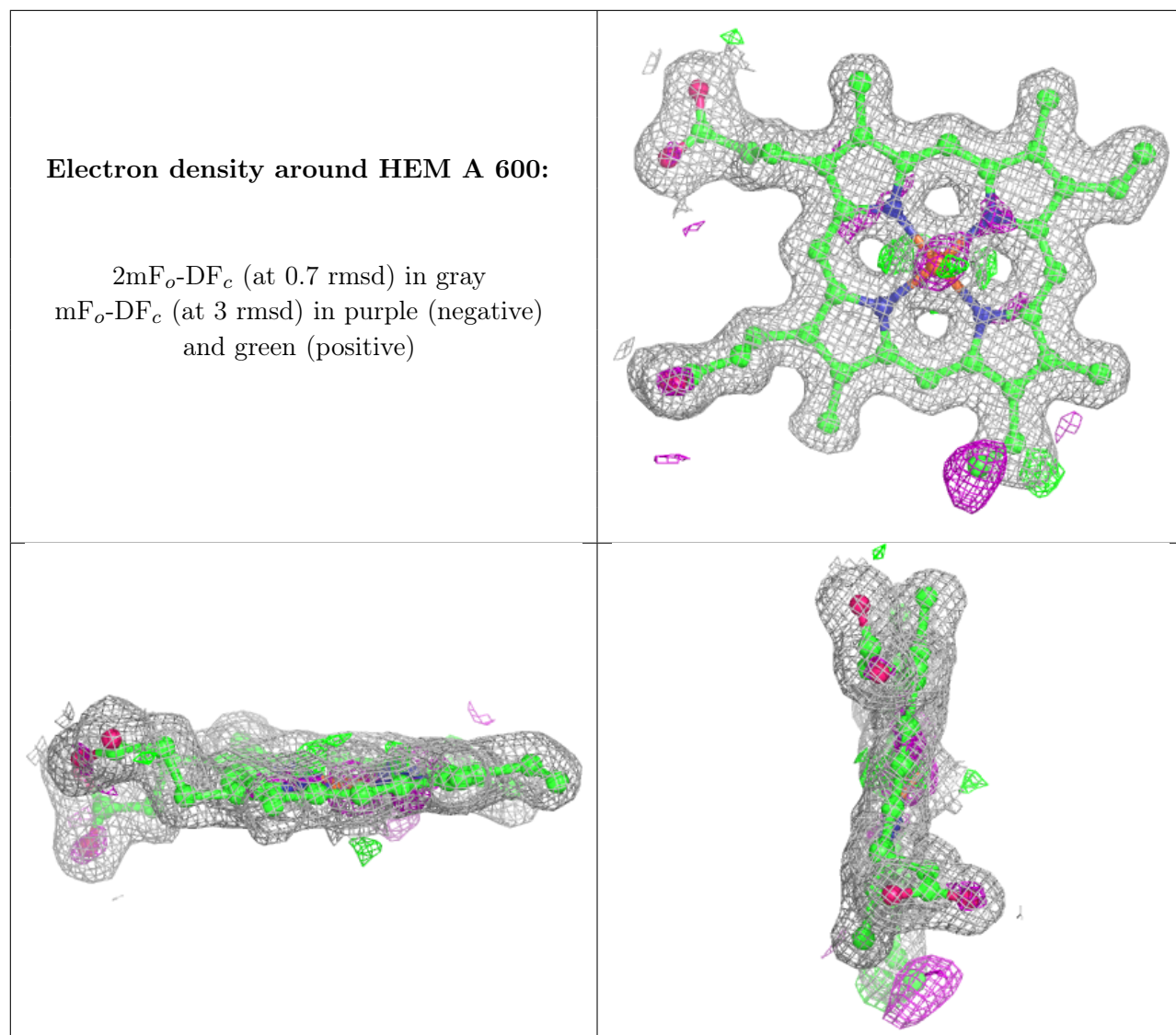
Mol	Type	Chain	Res	Atoms	RSCC	RSR	B-factors(Å ²)	Q<0.9
3	GOL	B	1	6/6	0.93	0.26	23,28,29,31	0
2	HEM	B	600	43/43	0.98	0.09	14,16,19,28	0
2	HEM	A	600	43/43	0.98	0.08	14,16,19,26	0

The following is a graphical depiction of the model fit to experimental electron density of all instances of the Ligand of Interest. In addition, ligands with molecular weight > 250 and outliers as shown on the geometry validation Tables will also be included. Each fit is shown from different orientation to approximate a three-dimensional view.

Electron density around HEM B 600:

$2mF_o-DF_c$ (at 0.7 rmsd) in gray
 mF_o-DF_c (at 3 rmsd) in purple (negative)
and green (positive)





6.5 Other polymers [i](#)

There are no such residues in this entry.