



Full wwPDB X-ray Structure Validation Report ⓘ

Oct 11, 2021 – 01:31 AM EDT

PDB ID : 2QD2
Title : F110A variant of human ferrochelatase with protoheme bound
Authors : Medlock, A.E.; Dailey, T.A.; Ross, T.A.; Dailey, H.A.; Lanzilota, W.N.
Deposited on : 2007-06-20
Resolution : 2.20 Å(reported)

This is a Full wwPDB X-ray Structure Validation Report for a publicly released PDB entry.

We welcome your comments at validation@mail.wwpdb.org

A user guide is available at

<https://www.wwpdb.org/validation/2017/XrayValidationReportHelp>

with specific help available everywhere you see the ⓘ symbol.

The following versions of software and data (see [references ⓘ](#)) were used in the production of this report:

MolProbity : 4.02b-467
Mogul : 1.8.5 (274361), CSD as541be (2020)
Xtriage (Phenix) : 1.13
EDS : 2.23.2
buster-report : 1.1.7 (2018)
Percentile statistics : 20191225.v01 (using entries in the PDB archive December 25th 2019)
Refmac : 5.8.0158
CCP4 : 7.0.044 (Gargrove)
Ideal geometry (proteins) : Engh & Huber (2001)
Ideal geometry (DNA, RNA) : Parkinson et al. (1996)
Validation Pipeline (wwPDB-VP) : 2.23.2

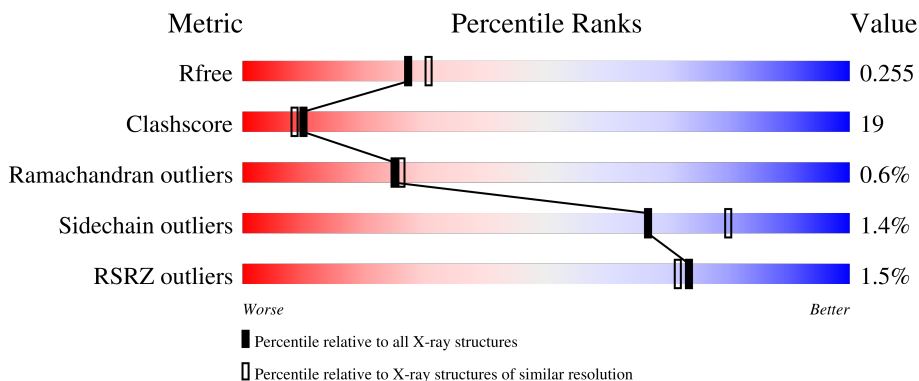
1 Overall quality at a glance

The following experimental techniques were used to determine the structure:

X-RAY DIFFRACTION

The reported resolution of this entry is 2.20 Å.

Percentile scores (ranging between 0-100) for global validation metrics of the entry are shown in the following graphic. The table shows the number of entries on which the scores are based.



Metric	Whole archive (#Entries)	Similar resolution (#Entries, resolution range(Å))
R_{free}	130704	4898 (2.20-2.20)
Clashscore	141614	5594 (2.20-2.20)
Ramachandran outliers	138981	5503 (2.20-2.20)
Sidechain outliers	138945	5504 (2.20-2.20)
RSRZ outliers	127900	4800 (2.20-2.20)

The table below summarises the geometric issues observed across the polymeric chains and their fit to the electron density. The red, orange, yellow and green segments of the lower bar indicate the fraction of residues that contain outliers for ≥ 3 , 2, 1 and 0 types of geometric quality criteria respectively. A grey segment represents the fraction of residues that are not modelled. The numeric value for each fraction is indicated below the corresponding segment, with a dot representing fractions $\leq 5\%$. The upper red bar (where present) indicates the fraction of residues that have poor fit to the electron density. The numeric value is given above the bar.

Mol	Chain	Length	Quality of chain
1	A	359	
1	B	359	

The following table lists non-polymeric compounds, carbohydrate monomers and non-standard residues in protein, DNA, RNA chains that are outliers for geometric or electron-density-fit criteria:

Mol	Type	Chain	Res	Chirality	Geometry	Clashes	Electron density
5	CHD	B	4	-	-	-	X

2 Entry composition [i](#)

There are 7 unique types of molecules in this entry. The entry contains 6480 atoms, of which 0 are hydrogens and 0 are deuteriums.

In the tables below, the ZeroOcc column contains the number of atoms modelled with zero occupancy, the AltConf column contains the number of residues with at least one atom in alternate conformation and the Trace column contains the number of residues modelled with at most 2 atoms.

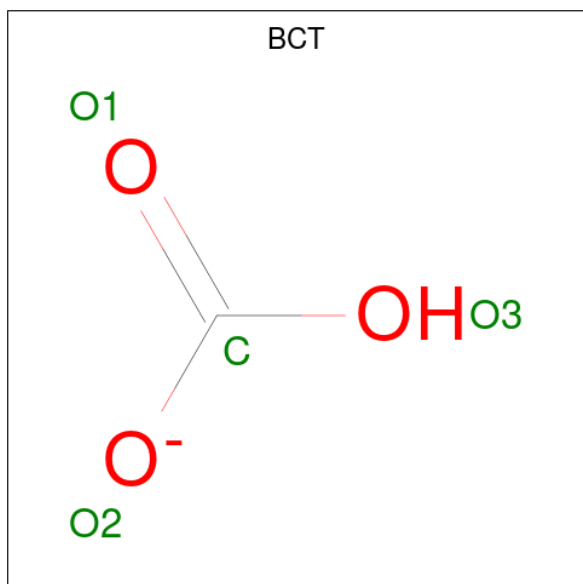
- Molecule 1 is a protein called Ferrochelatase.

Mol	Chain	Residues	Atoms					ZeroOcc	AltConf	Trace
			Total	C	N	O	S			
1	A	359	2929	1860	513	537	19	0	5	0
1	B	359	2933	1861	510	543	19	0	6	0

There are 2 discrepancies between the modelled and reference sequences:

Chain	Residue	Modelled	Actual	Comment	Reference
A	110	ALA	PHE	engineered mutation	UNP Q7KZA3
B	110	ALA	PHE	engineered mutation	UNP Q7KZA3

- Molecule 2 is BICARBONATE ION (three-letter code: BCT) (formula: CHO_3).



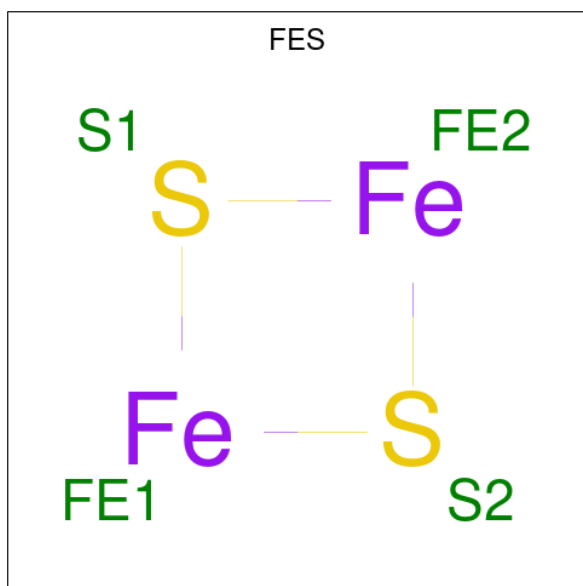
Mol	Chain	Residues	Atoms			ZeroOcc	AltConf
			Total	C	O		
2	A	1	4	1	3	0	0

Continued on next page...

Continued from previous page...

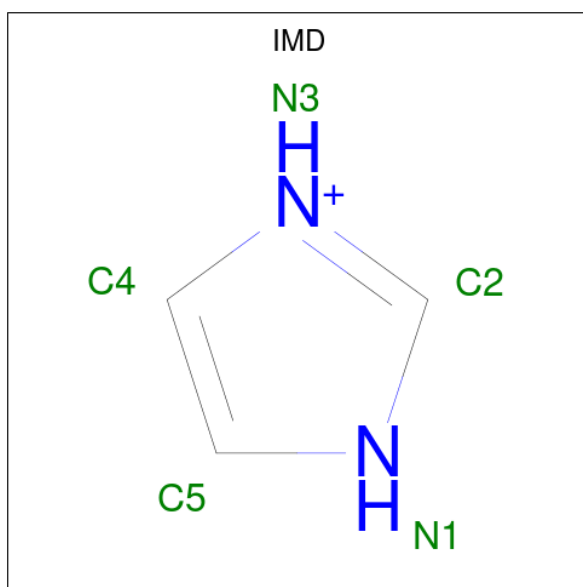
Mol	Chain	Residues	Atoms			ZeroOcc	AltConf
			Total	C	O		
2	B	1	4	1	3	0	0

- Molecule 3 is FE2/S2 (INORGANIC) CLUSTER (three-letter code: FES) (formula: Fe₂S₂).



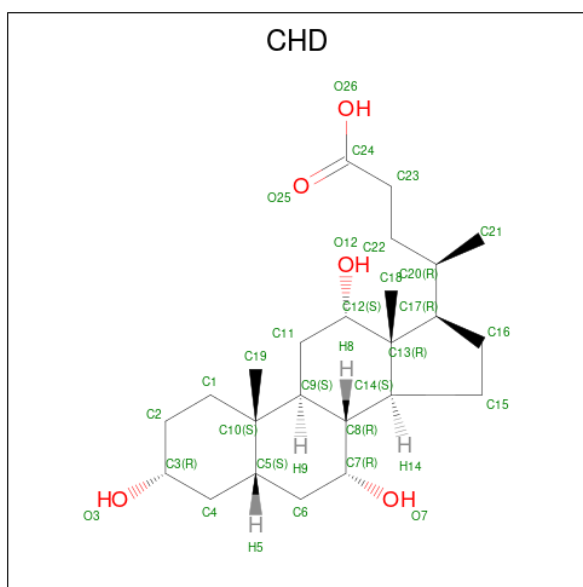
Mol	Chain	Residues	Atoms			ZeroOcc	AltConf
			Total	Fe	S		
3	A	1	4	2	2	0	0
3	B	1	4	2	2	0	0

- Molecule 4 is IMIDAZOLE (three-letter code: IMD) (formula: C₃H₅N₂).



Mol	Chain	Residues	Atoms	ZeroOcc	AltConf
4	A	1	Total C N 5 3 2	0	0
4	A	1	Total C N 5 3 2	0	0
4	B	1	Total C N 5 3 2	0	0

- Molecule 5 is CHOLIC ACID (three-letter code: CHD) (formula: $C_{24}H_{40}O_5$).



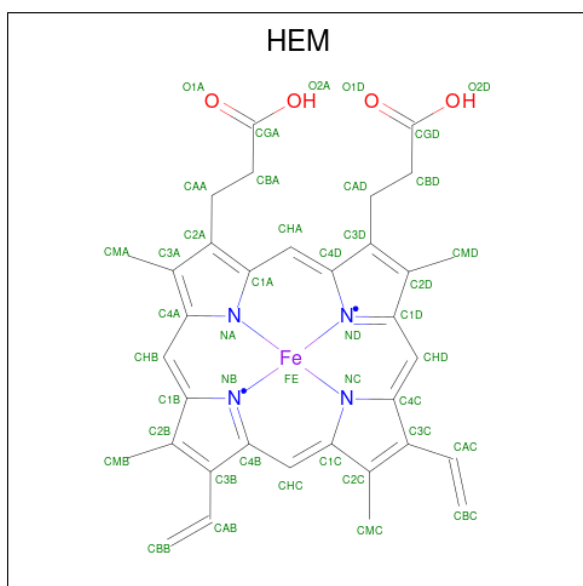
Mol	Chain	Residues	Atoms	ZeroOcc	AltConf
5	A	1	Total C O 29 24 5	0	0

Continued on next page...

Continued from previous page...

Mol	Chain	Residues	Atoms			ZeroOcc	AltConf
5	A	1	Total	C	O	0	0
			29	24	5		
5	B	1	Total	C	O	0	0
			29	24	5		
5	B	1	Total	C	O	0	0
			29	24	5		

- Molecule 6 is PROTOPORPHYRIN IX CONTAINING FE (three-letter code: HEM) (formula: $C_{34}H_{32}FeN_4O_4$).



Mol	Chain	Residues	Atoms				ZeroOcc	AltConf	
6	A	1	Total	C	Fe	N	O	0	0
			43	34	1	4	4		
6	B	1	Total	C	Fe	N	O	0	0
			43	34	1	4	4		

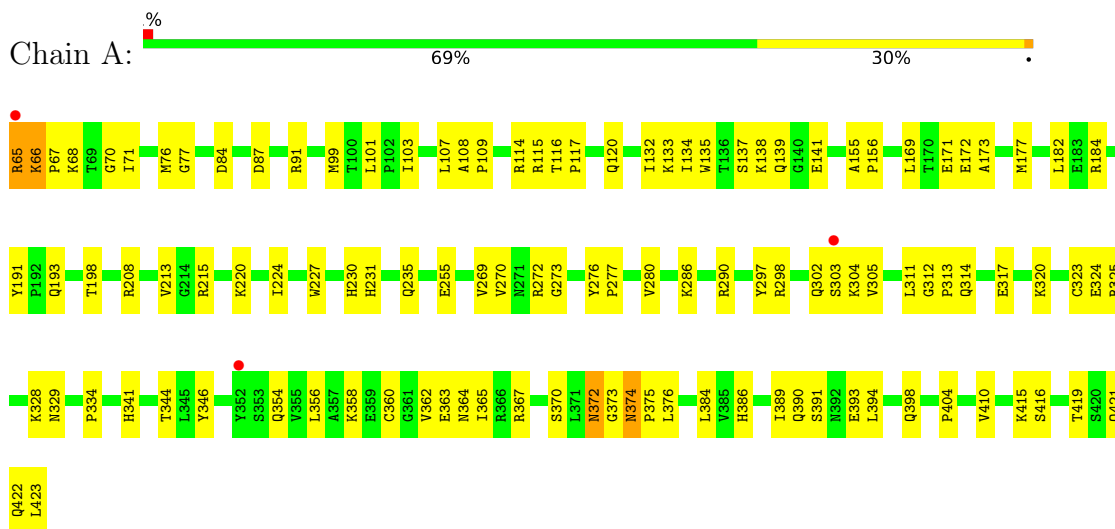
- Molecule 7 is water.

Mol	Chain	Residues	Atoms		ZeroOcc	AltConf
7	A	199	Total	O	0	0
			199	199		
7	B	186	Total	O	0	0
			186	186		

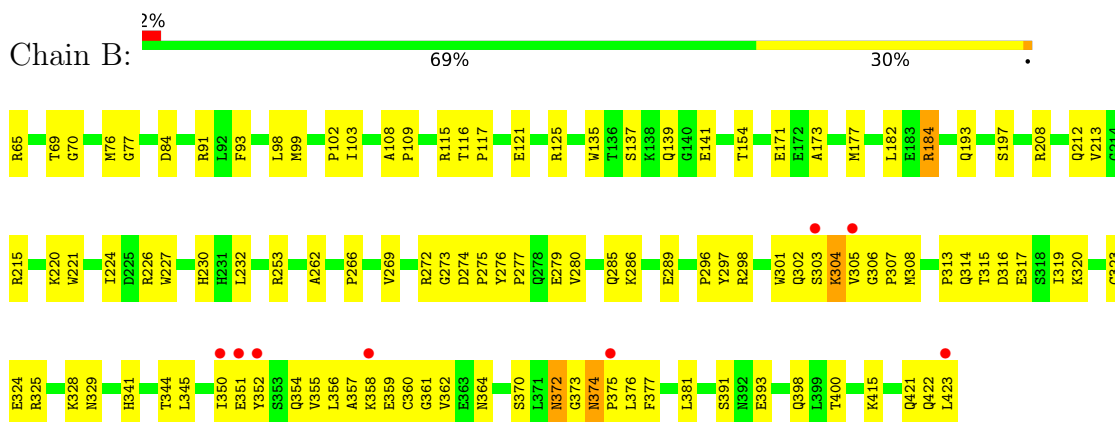
3 Residue-property plots i

These plots are drawn for all protein, RNA, DNA and oligosaccharide chains in the entry. The first graphic for a chain summarises the proportions of the various outlier classes displayed in the second graphic. The second graphic shows the sequence view annotated by issues in geometry and electron density. Residues are color-coded according to the number of geometric quality criteria for which they contain at least one outlier: green = 0, yellow = 1, orange = 2 and red = 3 or more. A red dot above a residue indicates a poor fit to the electron density ($RSRZ > 2$). Stretches of 2 or more consecutive residues without any outlier are shown as a green connector. Residues present in the sample, but not in the model, are shown in grey.

- Molecule 1: Ferrochelatase



- Molecule 1: Ferrochelatase



4 Data and refinement statistics i

Property	Value	Source
Space group	P 21 21 21	Depositor
Cell constants a, b, c, α , β , γ	86.20Å 92.64Å 109.03Å 90.00° 90.00° 90.00°	Depositor
Resolution (Å)	46.99 – 2.20 54.62 – 2.20	Depositor EDS
% Data completeness (in resolution range)	99.8 (46.99-2.20) 100.0 (54.62-2.20)	Depositor EDS
R_{merge}	0.09	Depositor
R_{sym}	0.07	Depositor
$\langle I/\sigma(I) \rangle$ ¹	5.90 (at 2.20Å)	Xtrriage
Refinement program	CNS 1.1	Depositor
R, R_{free}	0.220 , 0.261 0.214 , 0.255	Depositor DCC
R_{free} test set	2274 reflections (5.05%)	wwPDB-VP
Wilson B-factor (Å ²)	27.5	Xtrriage
Anisotropy	0.468	Xtrriage
Bulk solvent k_{sol} (e/Å ³), B_{sol} (Å ²)	0.35 , 55.5	EDS
L-test for twinning ²	$\langle L \rangle = 0.47$, $\langle L^2 \rangle = 0.30$	Xtrriage
Estimated twinning fraction	No twinning to report.	Xtrriage
F_o, F_c correlation	0.95	EDS
Total number of atoms	6480	wwPDB-VP
Average B, all atoms (Å ²)	32.0	wwPDB-VP

Xtrriage's analysis on translational NCS is as follows: *The analyses of the Patterson function reveals a significant off-origin peak that is 42.51 % of the origin peak, indicating pseudo-translational symmetry. The chance of finding a peak of this or larger height randomly in a structure without pseudo-translational symmetry is equal to 2.0170e-04. The detected translational NCS is most likely also responsible for the elevated intensity ratio.*

¹Intensities estimated from amplitudes.

²Theoretical values of $\langle |L| \rangle$, $\langle L^2 \rangle$ for acentric reflections are 0.5, 0.333 respectively for untwinned datasets, and 0.375, 0.2 for perfectly twinned datasets.

5 Model quality [i](#)

5.1 Standard geometry [i](#)

Bond lengths and bond angles in the following residue types are not validated in this section: BCT, IMD, FES, CHD, HEM

The Z score for a bond length (or angle) is the number of standard deviations the observed value is removed from the expected value. A bond length (or angle) with $|Z| > 5$ is considered an outlier worth inspection. RMSZ is the root-mean-square of all Z scores of the bond lengths (or angles).

Mol	Chain	Bond lengths		Bond angles	
		RMSZ	# Z >5	RMSZ	# Z >5
1	A	0.32	0/2998	0.59	1/4059 (0.0%)
1	B	0.33	0/3002	0.59	1/4066 (0.0%)
All	All	0.32	0/6000	0.59	2/8125 (0.0%)

There are no bond length outliers.

All (2) bond angle outliers are listed below:

Mol	Chain	Res	Type	Atoms	Z	Observed(°)	Ideal(°)
1	A	224	ILE	N-CA-C	-5.14	97.11	111.00
1	B	224	ILE	N-CA-C	-5.13	97.15	111.00

There are no chirality outliers.

There are no planarity outliers.

5.2 Too-close contacts [i](#)

In the following table, the Non-H and H(model) columns list the number of non-hydrogen atoms and hydrogen atoms in the chain respectively. The H(added) column lists the number of hydrogen atoms added and optimized by MolProbity. The Clashes column lists the number of clashes within the asymmetric unit, whereas Symm-Clashes lists symmetry-related clashes.

Mol	Chain	Non-H	H(model)	H(added)	Clashes	Symm-Clashes
1	A	2929	0	2935	122	0
1	B	2933	0	2926	121	0
2	A	4	0	0	0	0
2	B	4	0	0	0	0
3	A	4	0	0	0	0
3	B	4	0	0	0	0
4	A	10	0	9	1	0

Continued on next page...

Continued from previous page...

Mol	Chain	Non-H	H(model)	H(added)	Clashes	Symm-Clashes
4	B	5	0	5	3	0
5	A	58	0	78	6	0
5	B	58	0	78	9	0
6	A	43	0	30	1	0
6	B	43	0	30	5	0
7	A	199	0	0	7	0
7	B	186	0	0	7	0
All	All	6480	0	6091	232	0

The all-atom clashscore is defined as the number of clashes found per 1000 atoms (including hydrogen atoms). The all-atom clashscore for this structure is 19.

All (232) close contacts within the same asymmetric unit are listed below, sorted by their clash magnitude.

Atom-1	Atom-2	Interatomic distance (Å)	Clash overlap (Å)
1:B:304:LYS:HD3	1:B:314:GLN:HG3	1.36	1.01
1:B:266:PRO:HD3	6:B:601:HEM:HAB	1.53	0.90
1:B:323[A]:CYS:SG	1:B:362:VAL:HG22	2.15	0.86
1:A:297:TYR:H	1:B:398:GLN:HE22	1.22	0.84
1:A:323[B]:CYS:SG	1:A:360:CYS:HB2	2.19	0.82
1:A:208:ARG:HG3	1:A:208:ARG:HH11	1.46	0.81
1:B:358:LYS:HA	1:B:358:LYS:HE2	1.62	0.81
1:A:65:ARG:HE	1:A:65:ARG:N	1.77	0.80
1:B:115:ARG:HH11	1:B:115:ARG:HG2	1.47	0.80
1:A:235:GLN:HE21	1:A:376:LEU:HD21	1.48	0.79
1:A:398:GLN:HE22	1:B:297:TYR:H	1.32	0.78
1:A:139:GLN:HE21	1:A:373:GLY:HA2	1.50	0.77
1:B:208:ARG:HB3	1:B:212[A]:GLN:HE21	1.50	0.76
1:A:422:GLN:O	1:A:423:LEU:HB2	1.87	0.74
1:A:304[B]:LYS:NZ	1:A:312:GLY:HA2	2.03	0.73
1:B:301:TRP:O	1:B:304:LYS:HE3	1.88	0.73
1:B:422:GLN:HG2	1:B:423:LEU:HD13	1.70	0.73
1:A:101:LEU:HD21	5:A:2:CHD:H151	1.69	0.73
1:A:208:ARG:HH21	1:A:410:VAL:HG21	1.54	0.72
1:A:184:ARG:HD3	7:A:776:HOH:O	1.89	0.72
1:B:115:ARG:CZ	5:B:1:CHD:H231	2.19	0.72
1:B:272:ARG:HD2	7:B:612:HOH:O	1.87	0.72
1:A:65:ARG:N	1:A:65:ARG:NE	2.37	0.71
1:B:215:ARG:HD2	7:B:748:HOH:O	1.90	0.71
1:B:304:LYS:H	1:B:304:LYS:HD2	1.53	0.71
1:B:323[A]:CYS:SG	1:B:360:CYS:HB3	2.30	0.71

Continued on next page...

Continued from previous page...

Atom-1	Atom-2	Interatomic distance (Å)	Clash overlap (Å)
1:A:220:LYS:HE3	1:A:423:LEU:HD22	1.73	0.71
1:A:415:LYS:HE2	1:A:419:THR:HG21	1.72	0.71
1:A:87:ASP:HB3	1:A:91[A]:ARG:HH12	1.56	0.70
1:B:305:VAL:HB	5:B:1:CHD:C21	2.21	0.70
1:B:305:VAL:HB	5:B:1:CHD:H211	1.73	0.70
1:A:415:LYS:HD3	1:A:416:SER:N	2.07	0.70
1:A:328:LYS:HB3	1:A:363:GLU:HG3	1.74	0.69
1:A:276:TYR:HB3	1:A:277:PRO:HD3	1.75	0.69
1:A:67:PRO:HA	1:A:156:PRO:HG2	1.76	0.68
1:A:304[B]:LYS:HZ3	1:A:312:GLY:HA2	1.59	0.68
1:A:208:ARG:HG3	1:A:208:ARG:NH1	2.08	0.68
1:B:400:THR:HA	1:B:415:LYS:HD2	1.76	0.68
1:B:276:TYR:HB3	1:B:277:PRO:HD3	1.76	0.67
1:B:370:SER:HB2	1:B:372:ASN:ND2	2.10	0.67
1:B:108:ALA:HB3	1:B:109:PRO:HD3	1.76	0.67
1:B:308:MET:HB2	7:B:737:HOH:O	1.95	0.66
1:A:290:ARG:HG2	1:A:290:ARG:HH11	1.58	0.66
1:A:354:GLN:HE21	1:A:358:LYS:NZ	1.93	0.66
1:A:313:PRO:HG2	1:B:273:GLY:HA2	1.78	0.66
1:B:422:GLN:O	1:B:423:LEU:HB2	1.96	0.66
1:A:297:TYR:N	1:B:398:GLN:HE22	1.94	0.65
1:A:323[B]:CYS:SG	1:A:360:CYS:CB	2.84	0.65
1:B:213:VAL:O	1:B:215:ARG:HG3	1.96	0.65
1:A:314:GLN:HB3	1:A:317:GLU:HG2	1.78	0.65
1:A:304[A]:LYS:HZ2	1:A:314:GLN:HB2	1.62	0.65
1:B:314:GLN:HB3	1:B:317[A]:GLU:HG2	1.79	0.65
1:B:374:ASN:HD22	1:B:375:PRO:N	1.94	0.64
1:A:139:GLN:HG3	7:A:699:HOH:O	1.98	0.64
1:A:220:LYS:HD2	1:A:423:LEU:HD13	1.79	0.64
1:B:329:ASN:HD22	1:B:364:ASN:HB2	1.62	0.64
1:B:269:VAL:O	1:B:272:ARG:HG2	1.98	0.63
1:B:374:ASN:ND2	1:B:376:LEU:H	1.96	0.63
1:B:304:LYS:CD	1:B:314:GLN:HG3	2.22	0.62
1:A:334:PRO:HG3	1:A:367:ARG:HH11	1.64	0.62
1:A:137:SER:O	1:A:141:GLU:HG3	1.98	0.62
1:B:69:THR:HG23	1:B:184:ARG:HD2	1.82	0.62
1:B:344:THR:HG22	7:B:769:HOH:O	1.98	0.61
1:A:374:ASN:ND2	1:A:376:LEU:H	1.99	0.61
1:A:304[B]:LYS:HE3	1:A:314:GLN:HA	1.83	0.61
1:A:235:GLN:HE21	1:A:376:LEU:CD2	2.14	0.61
1:B:137:SER:O	1:B:141:GLU:HG3	2.01	0.60

Continued on next page...

Continued from previous page...

Atom-1	Atom-2	Interatomic distance (Å)	Clash overlap (Å)
1:A:220:LYS:CE	1:A:423:LEU:HD22	2.30	0.60
1:B:266:PRO:CD	6:B:601:HEM:HAB	2.29	0.60
1:A:374:ASN:HD22	1:A:375:PRO:N	1.98	0.60
1:A:235:GLN:NE2	1:A:376:LEU:HD21	2.16	0.60
1:A:184:ARG:NH1	1:A:389:ILE:HG23	2.17	0.60
1:B:356:LEU:O	1:B:360:CYS:HB2	2.00	0.60
1:A:398:GLN:HE22	1:B:297:TYR:N	1.99	0.60
1:A:184:ARG:HH12	1:A:389:ILE:HG23	1.66	0.60
1:A:362:VAL:HG21	1:A:365:ILE:HD11	1.83	0.60
1:A:286:LYS:HE3	1:B:286:LYS:NZ	2.17	0.59
1:B:84:ASP:HB3	7:B:752:HOH:O	2.03	0.59
1:B:116:THR:HB	1:B:117:PRO:HD3	1.83	0.58
1:B:220:LYS:HG3	1:B:220:LYS:O	2.03	0.58
1:B:221:TRP:H	1:B:421:GLN:NE2	2.02	0.58
1:B:303:SER:O	1:B:305:VAL:HG13	2.03	0.58
1:B:341:HIS:HB2	6:B:601:HEM:O2D	2.03	0.58
1:B:374:ASN:HD22	1:B:375:PRO:CD	2.16	0.58
1:A:374:ASN:HD22	1:A:374:ASN:C	2.05	0.58
1:A:116:THR:HB	1:A:117:PRO:HD3	1.84	0.57
1:A:139:GLN:NE2	1:A:373:GLY:HA2	2.17	0.57
1:B:314:GLN:O	1:B:317[A]:GLU:HG2	2.03	0.57
1:B:139:GLN:NE2	1:B:373:GLY:HA2	2.18	0.57
1:A:213:VAL:HG23	1:A:215:ARG:HG2	1.86	0.57
1:B:314:GLN:OE1	1:B:317[B]:GLU:HG3	2.04	0.57
1:B:370:SER:C	1:B:372:ASN:H	2.08	0.56
1:A:391:SER:OG	1:A:393[A]:GLU:HG3	2.05	0.56
1:B:422:GLN:HG2	1:B:423:LEU:CD1	2.35	0.56
1:B:173:ALA:O	1:B:177:MET:HG3	2.06	0.56
1:B:304:LYS:HD3	1:B:314:GLN:CG	2.24	0.56
1:B:303:SER:CB	4:B:425:IMD:HN1	2.19	0.56
1:A:115:ARG:HD2	5:A:2:CHD:H231	1.87	0.56
1:A:273:GLY:HA3	1:A:404:PRO:HD2	1.87	0.56
1:A:215:ARG:HB3	1:A:215:ARG:NH1	2.22	0.55
1:A:415:LYS:HD3	1:A:415:LYS:C	2.27	0.55
1:A:108:ALA:HB3	1:A:109:PRO:HD3	1.89	0.55
1:B:320:LYS:O	1:B:324:GLU:HG3	2.06	0.55
1:A:87:ASP:HB3	1:A:91[A]:ARG:NH1	2.22	0.54
1:A:344:THR:HG22	7:A:739:HOH:O	2.06	0.54
1:B:208:ARG:HB3	1:B:212[A]:GLN:NE2	2.19	0.54
1:B:139:GLN:HE21	1:B:373:GLY:HA2	1.72	0.54
1:B:374:ASN:HD22	1:B:374:ASN:C	2.11	0.54

Continued on next page...

Continued from previous page...

Atom-1	Atom-2	Interatomic distance (Å)	Clash overlap (Å)
1:B:115:ARG:HG2	1:B:115:ARG:NH1	2.19	0.54
1:A:134:ILE:O	1:A:138:LYS:HG2	2.08	0.54
1:A:329:ASN:HD22	1:A:364:ASN:HB2	1.72	0.54
1:A:173:ALA:O	1:A:177:MET:HG3	2.08	0.53
1:A:320:LYS:O	1:A:324:GLU:HG3	2.08	0.53
1:A:374:ASN:HD22	1:A:375:PRO:CD	2.21	0.53
1:B:302:GLN:HB3	1:B:315:THR:OG1	2.08	0.53
1:B:99:MET:HG3	5:B:1:CHD:C19	2.39	0.53
1:A:114:ARG:HH12	5:A:426:CHD:H5	1.74	0.53
1:A:286:LYS:HE3	1:B:286:LYS:HZ2	1.73	0.53
1:A:114:ARG:HH12	5:A:426:CHD:C5	2.22	0.53
1:B:305:VAL:C	5:B:1:CHD:H213	2.29	0.53
1:A:235:GLN:HA	1:A:290:ARG:NH1	2.24	0.53
1:A:269:VAL:O	1:A:272:ARG:HG2	2.08	0.53
1:B:303:SER:HB2	4:B:425:IMD:HN1	1.74	0.52
1:A:103:ILE:HG13	1:A:107:LEU:HD13	1.90	0.52
1:A:68:LYS:HE3	1:A:155:ALA:O	2.10	0.52
1:A:313:PRO:CG	1:B:273:GLY:HA2	2.39	0.52
1:B:351:GLU:OE2	1:B:351:GLU:HA	2.10	0.52
1:A:370:SER:HB2	1:A:372:ASN:ND2	2.25	0.52
1:B:230:HIS:CE1	1:B:232:LEU:HB2	2.46	0.51
1:A:135:TRP:CE2	1:A:372:ASN:HB3	2.46	0.51
1:B:305:VAL:HG11	6:B:601:HEM:O2A	2.11	0.50
1:A:422:GLN:HG2	1:A:423:LEU:CD1	2.41	0.50
1:B:102:PRO:O	1:B:103:ILE:C	2.48	0.50
1:A:370:SER:C	1:A:372:ASN:H	2.13	0.50
1:B:350:ILE:O	1:B:354:GLN:HG3	2.11	0.50
1:B:306:GLY:N	5:B:1:CHD:H213	2.26	0.50
1:B:70:GLY:HA3	1:B:182:LEU:HD13	1.93	0.49
1:B:135:TRP:CE2	1:B:372:ASN:HB3	2.47	0.49
1:A:84:ASP:HB3	7:A:681:HOH:O	2.12	0.49
1:A:99:MET:HB2	5:A:2:CHD:H62	1.94	0.49
1:A:116:THR:O	1:A:120:GLN:HG3	2.12	0.49
1:B:356:LEU:HG	1:B:362:VAL:CG2	2.42	0.49
1:A:354:GLN:HE21	1:A:358:LYS:HZ1	1.58	0.49
1:B:220:LYS:HD3	1:B:423:LEU:HD22	1.93	0.49
1:B:355:VAL:O	1:B:359:GLU:HG2	2.11	0.49
1:B:303:SER:HB2	4:B:425:IMD:N1	2.26	0.49
1:A:191:TYR:CZ	1:A:198:THR:HB	2.48	0.49
1:B:139:GLN:HG3	7:B:726:HOH:O	2.13	0.49
1:A:169:LEU:HB2	1:A:172:GLU:HG3	1.95	0.48

Continued on next page...

Continued from previous page...

Atom-1	Atom-2	Interatomic distance (Å)	Clash overlap (Å)
1:A:273:GLY:O	1:B:298:ARG:NH1	2.46	0.48
1:A:386:HIS:O	1:A:390:GLN:HG3	2.13	0.48
1:A:208:ARG:NH2	1:A:410:VAL:HG21	2.26	0.48
1:A:341:HIS:HB2	6:A:602:HEM:O2D	2.12	0.48
1:A:71:ILE:N	1:A:71:ILE:HD12	2.28	0.48
1:A:354:GLN:HE21	1:A:358:LYS:HZ3	1.61	0.48
1:B:208:ARG:O	1:B:212[A]:GLN:HG3	2.14	0.47
1:A:171:GLU:CD	1:A:171:GLU:H	2.18	0.47
1:B:121:GLU:O	1:B:125:ARG:HG2	2.15	0.47
1:B:351:GLU:O	1:B:355:VAL:HG23	2.14	0.47
1:B:374:ASN:HD22	1:B:375:PRO:HD2	1.78	0.47
1:A:91[B]:ARG:NH2	1:A:169:LEU:HD11	2.30	0.47
1:A:193:GLN:HG2	1:A:280:VAL:HA	1.96	0.46
1:A:304[A]:LYS:HZ1	1:A:312:GLY:HA2	1.80	0.46
1:A:155:ALA:HB1	1:A:156:PRO:HA	1.97	0.46
1:B:357:ALA:HA	1:B:362:VAL:HG23	1.96	0.46
1:A:298:ARG:HG2	1:A:298:ARG:HH11	1.81	0.46
1:B:314:GLN:HB3	1:B:317[A]:GLU:CG	2.45	0.46
1:A:101:LEU:HD21	5:A:2:CHD:H7	1.96	0.46
1:A:215:ARG:HB3	1:A:215:ARG:HH11	1.80	0.46
1:B:391:SER:OG	1:B:393[B]:GLU:HG3	2.16	0.45
1:A:394:LEU:HD22	1:A:421:GLN:HB2	1.97	0.45
1:A:66:LYS:HG2	1:A:67:PRO:HD2	1.97	0.45
1:A:235:GLN:HG3	1:A:290:ARG:HH12	1.81	0.45
1:B:253:ARG:HH11	1:B:253:ARG:HG2	1.82	0.45
1:B:325:ARG:HG3	1:B:325:ARG:HH11	1.81	0.45
1:B:193:GLN:HG2	1:B:280:VAL:HA	1.97	0.45
1:A:398:GLN:NE2	1:B:296:PRO:HA	2.31	0.45
1:B:76:MET:HG3	1:B:77:GLY:O	2.16	0.45
1:A:374:ASN:ND2	1:A:374:ASN:C	2.70	0.45
1:B:93:PHE:CZ	1:B:115:ARG:HD3	2.52	0.45
1:B:285:GLN:O	1:B:289:GLU:HB2	2.16	0.45
1:A:304[A]:LYS:HE2	1:A:311:LEU:O	2.17	0.44
1:A:334:PRO:HG3	1:A:367:ARG:NH1	2.30	0.44
1:B:356:LEU:HG	1:B:362:VAL:HG21	1.99	0.44
1:A:374:ASN:HD22	1:A:375:PRO:HD2	1.81	0.44
1:A:132:ILE:HG23	1:A:133:LYS:N	2.32	0.44
1:B:98:LEU:HD12	1:B:197:SER:HB2	1.99	0.44
1:B:226:ARG:HD3	1:B:279:GLU:OE2	2.17	0.44
1:B:316:ASP:OD1	1:B:344:THR:HB	2.17	0.44
1:A:302:GLN:NE2	7:A:789:HOH:O	2.45	0.44

Continued on next page...

Continued from previous page...

Atom-1	Atom-2	Interatomic distance (Å)	Clash overlap (Å)
1:A:70:GLY:HA3	1:A:182:LEU:HD13	2.00	0.44
1:B:274:ASP:HA	1:B:275:PRO:HD3	1.74	0.43
1:A:91[A]:ARG:NH1	7:A:695:HOH:O	2.51	0.43
1:B:370:SER:C	1:B:372:ASN:N	2.72	0.43
1:A:76:MET:HG3	1:A:77:GLY:O	2.19	0.43
1:A:213:VAL:CG2	1:A:215:ARG:HG2	2.49	0.43
1:A:304[A]:LYS:NZ	7:A:734:HOH:O	2.41	0.43
1:B:91:ARG:NH1	7:B:698:HOH:O	2.52	0.43
1:B:99:MET:HG3	5:B:1:CHD:H192	2.01	0.43
1:B:304:LYS:H	1:B:304:LYS:CD	2.26	0.43
1:A:304[A]:LYS:NZ	1:A:312:GLY:HA2	2.34	0.43
1:B:171:GLU:H	1:B:171:GLU:CD	2.21	0.43
1:B:374:ASN:ND2	1:B:374:ASN:C	2.72	0.43
1:A:346:TYR:CD2	1:A:356:LEU:HD22	2.54	0.42
1:B:115:ARG:NH1	5:B:1:CHD:H231	2.34	0.42
1:B:230:HIS:HE1	1:B:232:LEU:HB2	1.84	0.42
1:A:415:LYS:O	1:A:419:THR:HG23	2.19	0.42
1:B:304:LYS:HD2	1:B:304:LYS:N	2.26	0.42
1:B:99:MET:HG3	5:B:1:CHD:H191	2.01	0.42
1:A:103:ILE:HG13	1:A:103:ILE:O	2.20	0.42
1:B:65:ARG:HH11	1:B:65:ARG:HG2	1.84	0.42
1:B:115:ARG:NH1	1:B:115:ARG:CG	2.80	0.42
1:B:315:THR:O	1:B:319:ILE:HG13	2.19	0.42
1:A:325:ARG:HG3	1:A:325:ARG:HH11	1.85	0.42
1:B:325:ARG:HG3	1:B:325:ARG:NH1	2.35	0.41
1:A:270:VAL:O	1:B:313:PRO:HD3	2.20	0.41
1:A:230:HIS:CD2	1:A:384:LEU:HG	2.56	0.41
1:A:290:ARG:HG2	1:A:290:ARG:NH1	2.29	0.41
1:A:303:SER:O	1:A:305:VAL:HG13	2.21	0.41
1:B:262:ALA:O	1:B:301:TRP:HA	2.20	0.41
1:A:354:GLN:HG2	1:A:358:LYS:HZ3	1.85	0.41
1:B:354:GLN:O	1:B:358:LYS:HG2	2.20	0.41
1:B:377:PHE:O	1:B:381:LEU:HG	2.21	0.41
1:A:303:SER:O	4:A:425:IMD:N1	2.43	0.41
1:A:422:GLN:HG2	1:A:423:LEU:HD13	2.03	0.41
1:A:304[B]:LYS:HZ3	1:A:312:GLY:CA	2.31	0.41
1:B:69:THR:OG1	1:B:154:THR:HB	2.21	0.40
1:B:328:LYS:HD3	1:B:361:GLY:O	2.22	0.40
1:B:345:LEU:HD11	1:B:352:TYR:CD2	2.56	0.40
1:A:370:SER:C	1:A:372:ASN:N	2.74	0.40
1:B:115:ARG:HH21	6:B:601:HEM:CGA	2.34	0.40

Continued on next page...

Continued from previous page...

Atom-1	Atom-2	Interatomic distance (Å)	Clash overlap (Å)
1:B:314:GLN:H	1:B:317[A]:GLU:CD	2.24	0.40

There are no symmetry-related clashes.

5.3 Torsion angles [i](#)

5.3.1 Protein backbone [i](#)

In the following table, the Percentiles column shows the percent Ramachandran outliers of the chain as a percentile score with respect to all X-ray entries followed by that with respect to entries of similar resolution.

The Analysed column shows the number of residues for which the backbone conformation was analysed, and the total number of residues.

Mol	Chain	Analysed	Favoured	Allowed	Outliers	Percentiles	
1	A	362/359 (101%)	347 (96%)	13 (4%)	2 (1%)	25	26
1	B	363/359 (101%)	351 (97%)	10 (3%)	2 (1%)	25	26
All	All	725/718 (101%)	698 (96%)	23 (3%)	4 (1%)	25	26

All (4) Ramachandran outliers are listed below:

Mol	Chain	Res	Type
1	A	372	ASN
1	B	372	ASN
1	A	66	LYS
1	B	307	PRO

5.3.2 Protein sidechains [i](#)

In the following table, the Percentiles column shows the percent sidechain outliers of the chain as a percentile score with respect to all X-ray entries followed by that with respect to entries of similar resolution.

The Analysed column shows the number of residues for which the sidechain conformation was analysed, and the total number of residues.

Mol	Chain	Analysed	Rotameric	Outliers	Percentiles	
1	A	328/323 (102%)	323 (98%)	5 (2%)	65	78

Continued on next page...

Continued from previous page...

Mol	Chain	Analysed	Rotameric	Outliers	Percentiles	
1	B	329/323 (102%)	325 (99%)	4 (1%)	71	83
All	All	657/646 (102%)	648 (99%)	9 (1%)	67	80

All (9) residues with a non-rotameric sidechain are listed below:

Mol	Chain	Res	Type
1	A	65	ARG
1	A	227	TRP
1	A	231	HIS
1	A	255	GLU
1	A	374	ASN
1	B	184	ARG
1	B	227	TRP
1	B	304	LYS
1	B	374	ASN

Sometimes sidechains can be flipped to improve hydrogen bonding and reduce clashes. All (20) such sidechains are listed below:

Mol	Chain	Res	Type
1	A	231	HIS
1	A	235	GLN
1	A	302	GLN
1	A	329	ASN
1	A	354	GLN
1	A	364	ASN
1	A	374	ASN
1	A	390	GLN
1	A	398	GLN
1	A	421	GLN
1	B	153	ASN
1	B	235	GLN
1	B	247	HIS
1	B	302	GLN
1	B	329	ASN
1	B	354	GLN
1	B	364	ASN
1	B	374	ASN
1	B	398	GLN
1	B	421	GLN

5.3.3 RNA [i](#)

There are no RNA molecules in this entry.

5.4 Non-standard residues in protein, DNA, RNA chains [i](#)

There are no non-standard protein/DNA/RNA residues in this entry.

5.5 Carbohydrates [i](#)

There are no monosaccharides in this entry.

5.6 Ligand geometry [i](#)

13 ligands are modelled in this entry.

In the following table, the Counts columns list the number of bonds (or angles) for which Mogul statistics could be retrieved, the number of bonds (or angles) that are observed in the model and the number of bonds (or angles) that are defined in the Chemical Component Dictionary. The Link column lists molecule types, if any, to which the group is linked. The Z score for a bond length (or angle) is the number of standard deviations the observed value is removed from the expected value. A bond length (or angle) with $|Z| > 2$ is considered an outlier worth inspection. RMSZ is the root-mean-square of all Z scores of the bond lengths (or angles).

Mol	Type	Chain	Res	Link	Bond lengths			Bond angles		
					Counts	RMSZ	# Z > 2	Counts	RMSZ	# Z > 2
3	FES	B	424	1	0,4,4	-	-	-		
6	HEM	B	601	4	27,50,50	1.80	7 (25%)	17,82,82	2.74	10 (58%)
4	IMD	A	425	6	3,5,5	0.47	0	4,5,5	0.67	0
2	BCT	B	2	-	0,3,3	-	-	0,3,3	-	-
5	CHD	B	4	-	29,32,32	1.58	6 (20%)	48,51,51	1.59	11 (22%)
2	BCT	A	1	6	0,3,3	-	-	0,3,3	-	-
4	IMD	A	3	-	3,5,5	0.48	0	4,5,5	0.62	0
4	IMD	B	425	6	3,5,5	0.49	0	4,5,5	0.67	0
3	FES	A	424	1	0,4,4	-	-	-		
5	CHD	A	2	-	29,32,32	1.53	7 (24%)	48,51,51	1.52	9 (18%)
5	CHD	B	1	-	29,32,32	1.50	6 (20%)	48,51,51	1.50	9 (18%)
5	CHD	A	426	-	29,32,32	1.58	6 (20%)	48,51,51	1.59	11 (22%)
6	HEM	A	602	2,4	27,50,50	1.82	8 (29%)	17,82,82	2.86	10 (58%)

In the following table, the Chirals column lists the number of chiral outliers, the number of chiral centers analysed, the number of these observed in the model and the number defined in the

Chemical Component Dictionary. Similar counts are reported in the Torsion and Rings columns. '-' means no outliers of that kind were identified.

Mol	Type	Chain	Res	Link	Chirals	Torsions	Rings
3	FES	B	424	1	-	-	0/1/1/1
6	HEM	B	601	4	-	0/6/54/54	-
4	IMD	A	425	6	-	-	0/1/1/1
5	CHD	B	4	-	-	0/7/74/74	0/4/4/4
4	IMD	A	3	-	-	-	0/1/1/1
4	IMD	B	425	6	-	-	0/1/1/1
5	CHD	B	1	-	-	0/7/74/74	0/4/4/4
5	CHD	A	2	-	-	0/7/74/74	0/4/4/4
6	HEM	A	602	2,4	-	2/6/54/54	-
5	CHD	A	426	-	-	0/7/74/74	0/4/4/4
3	FES	A	424	1	-	-	0/1/1/1

All (40) bond length outliers are listed below:

Mol	Chain	Res	Type	Atoms	Z	Observed(Å)	Ideal(Å)
6	B	601	HEM	C3C-CAC	-5.67	1.36	1.47
6	A	602	HEM	C3C-CAC	-5.40	1.36	1.47
6	A	602	HEM	C4D-C3D	3.10	1.49	1.42
6	A	602	HEM	C1A-NA	2.95	1.42	1.36
6	A	602	HEM	C4B-NB	2.82	1.42	1.36
6	B	601	HEM	C4D-C3D	2.82	1.48	1.42
5	A	2	CHD	C10-C9	2.80	1.61	1.56
5	A	426	CHD	C18-C13	2.80	1.58	1.54
5	B	4	CHD	C18-C13	2.79	1.58	1.54
6	B	601	HEM	C1A-NA	2.76	1.41	1.36
6	A	602	HEM	C3B-C2B	2.71	1.44	1.40
6	B	601	HEM	C4B-NB	2.71	1.41	1.36
5	B	1	CHD	C18-C13	2.65	1.58	1.54
5	A	2	CHD	C11-C9	2.64	1.58	1.53
5	B	1	CHD	C8-C9	2.61	1.59	1.53
6	B	601	HEM	C4A-CHB	-2.59	1.33	1.41
5	A	426	CHD	C20-C17	2.58	1.58	1.54
5	B	4	CHD	C20-C17	2.57	1.58	1.54
5	B	1	CHD	C6-C7	2.55	1.57	1.52
6	B	601	HEM	C3B-C2B	2.54	1.43	1.40
6	A	602	HEM	C4A-CHB	-2.52	1.34	1.41
5	A	2	CHD	C18-C13	2.51	1.58	1.54
5	B	1	CHD	C20-C17	2.43	1.58	1.54
5	A	2	CHD	C11-C12	2.43	1.57	1.53
5	A	426	CHD	C8-C9	2.38	1.58	1.53
5	B	4	CHD	C8-C9	2.38	1.58	1.53

Continued on next page...

Continued from previous page...

Mol	Chain	Res	Type	Atoms	Z	Observed(Å)	Ideal(Å)
5	B	4	CHD	C6-C7	2.38	1.56	1.52
5	A	426	CHD	C6-C7	2.36	1.56	1.52
5	B	4	CHD	C6-C5	2.31	1.57	1.53
5	A	426	CHD	C6-C5	2.31	1.57	1.53
6	A	602	HEM	C1C-C2C	2.26	1.47	1.42
6	B	601	HEM	C1C-C2C	2.25	1.47	1.42
5	B	1	CHD	C6-C5	2.24	1.57	1.53
5	A	2	CHD	C8-C9	2.11	1.58	1.53
5	A	426	CHD	C10-C9	2.04	1.59	1.56
6	A	602	HEM	C3B-CAB	-2.03	1.43	1.47
5	A	2	CHD	C20-C17	2.03	1.58	1.54
5	A	2	CHD	C6-C7	2.03	1.56	1.52
5	B	4	CHD	C10-C9	2.02	1.59	1.56
5	B	1	CHD	C16-C17	2.01	1.58	1.54

All (60) bond angle outliers are listed below:

Mol	Chain	Res	Type	Atoms	Z	Observed(°)	Ideal(°)
6	A	602	HEM	C4C-C3C-C2C	-5.38	103.14	106.90
6	B	601	HEM	C4C-C3C-C2C	-5.28	103.21	106.90
5	B	1	CHD	C9-C11-C12	-4.05	108.95	114.30
6	A	602	HEM	CBD-CAD-C3D	-4.04	105.03	112.48
6	A	602	HEM	CMA-C3A-C4A	-3.76	122.68	128.46
6	B	601	HEM	CBD-CAD-C3D	-3.72	105.62	112.48
6	B	601	HEM	CMA-C3A-C4A	-3.66	122.84	128.46
6	A	602	HEM	CAD-CBD-CGD	3.63	118.76	112.67
5	A	2	CHD	C9-C11-C12	-3.61	109.53	114.30
5	A	2	CHD	C17-C13-C12	3.60	120.95	117.67
6	A	602	HEM	CMD-C2D-C3D	3.57	131.68	124.94
6	A	602	HEM	C4A-C3A-C2A	3.57	109.48	107.00
6	B	601	HEM	CAD-CBD-CGD	3.45	118.46	112.67
5	A	426	CHD	C13-C17-C20	-3.37	115.47	119.50
5	B	4	CHD	C13-C17-C20	-3.34	115.50	119.50
6	B	601	HEM	C4A-C3A-C2A	3.31	109.30	107.00
6	A	602	HEM	C1D-C2D-C3D	-3.31	104.69	107.00
6	B	601	HEM	CMD-C2D-C3D	3.27	131.11	124.94
5	B	4	CHD	C9-C11-C12	-3.25	110.01	114.30
5	A	426	CHD	C9-C11-C12	-3.25	110.01	114.30
5	A	426	CHD	C17-C13-C12	3.16	120.55	117.67
5	B	4	CHD	C17-C13-C12	3.15	120.55	117.67
6	A	602	HEM	CMD-C2D-C1D	-3.15	123.62	128.46
5	A	426	CHD	C13-C14-C8	-3.11	110.77	114.74

Continued on next page...

Continued from previous page...

Mol	Chain	Res	Type	Atoms	Z	Observed(°)	Ideal(°)
6	B	601	HEM	C1D-C2D-C3D	-3.10	104.84	107.00
5	B	4	CHD	C13-C14-C8	-3.09	110.79	114.74
5	B	1	CHD	C19-C10-C9	-3.03	107.00	111.18
5	A	2	CHD	C19-C10-C9	-2.94	107.13	111.18
5	A	426	CHD	C19-C10-C9	-2.92	107.16	111.18
5	B	4	CHD	C19-C10-C9	-2.88	107.22	111.18
6	B	601	HEM	CMD-C2D-C1D	-2.87	124.05	128.46
5	B	1	CHD	C16-C15-C14	-2.78	99.63	105.13
5	A	426	CHD	C11-C9-C10	-2.73	110.91	113.73
5	B	4	CHD	C11-C9-C10	-2.72	110.92	113.73
5	B	1	CHD	C23-C22-C20	-2.67	111.12	114.72
5	A	2	CHD	C10-C9-C8	-2.67	108.95	111.82
5	B	1	CHD	C11-C9-C10	-2.67	110.97	113.73
5	B	1	CHD	C13-C14-C8	-2.64	111.37	114.74
5	A	2	CHD	C16-C15-C14	-2.56	100.05	105.13
5	B	4	CHD	C23-C22-C20	-2.49	111.36	114.72
5	B	1	CHD	C6-C5-C10	-2.49	110.02	112.66
5	A	426	CHD	C23-C22-C20	-2.46	111.40	114.72
6	B	601	HEM	C3B-C4B-NB	2.45	112.37	109.21
5	A	426	CHD	C16-C15-C14	-2.44	100.29	105.13
5	B	4	CHD	C16-C15-C14	-2.42	100.33	105.13
5	A	2	CHD	C6-C5-C10	-2.41	110.10	112.66
6	A	602	HEM	CMB-C2B-C3B	2.38	129.13	124.68
6	A	602	HEM	C3B-C4B-NB	2.38	112.28	109.21
5	B	4	CHD	C6-C5-C10	-2.25	110.27	112.66
5	A	426	CHD	C6-C5-C10	-2.24	110.27	112.66
6	B	601	HEM	CMB-C2B-C3B	2.24	128.86	124.68
5	A	426	CHD	C18-C13-C14	-2.19	107.78	111.21
5	A	2	CHD	C13-C14-C8	-2.18	111.96	114.74
5	B	4	CHD	C18-C13-C14	-2.15	107.84	111.21
5	A	2	CHD	C16-C17-C20	-2.15	108.82	112.15
5	B	1	CHD	C4-C5-C10	-2.14	110.38	112.66
5	A	2	CHD	C5-C4-C3	-2.12	109.64	112.76
5	B	1	CHD	C13-C17-C20	-2.10	116.99	119.50
5	B	4	CHD	C10-C9-C8	-2.03	109.64	111.82
5	A	426	CHD	C10-C9-C8	-2.01	109.67	111.82

There are no chirality outliers.

All (2) torsion outliers are listed below:

Mol	Chain	Res	Type	Atoms
6	A	602	HEM	C2A-CAA-CBA-CGA

Continued on next page...

Continued from previous page...

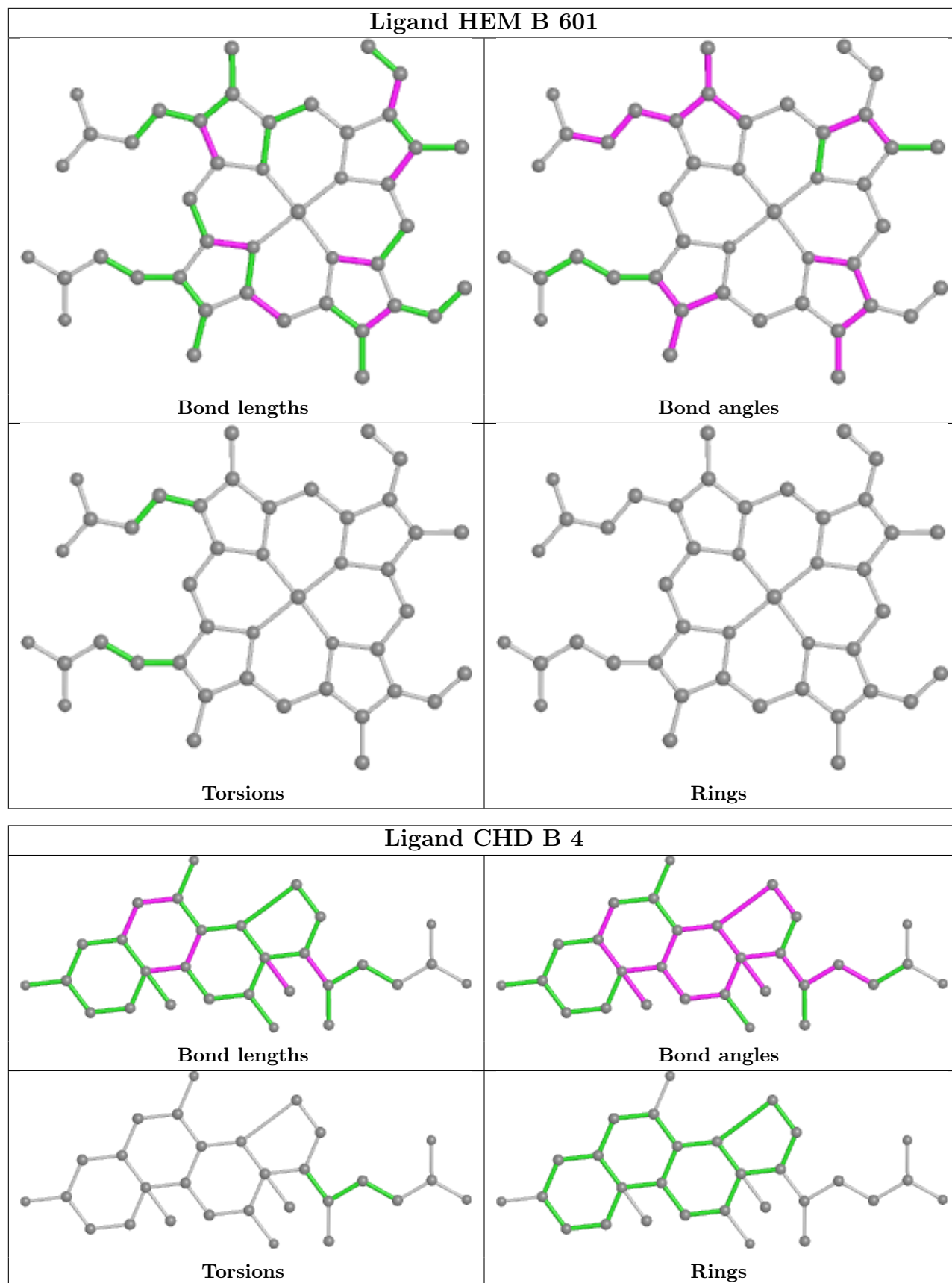
Mol	Chain	Res	Type	Atoms
6	A	602	HEM	C3D-CAD-CBD-CGD

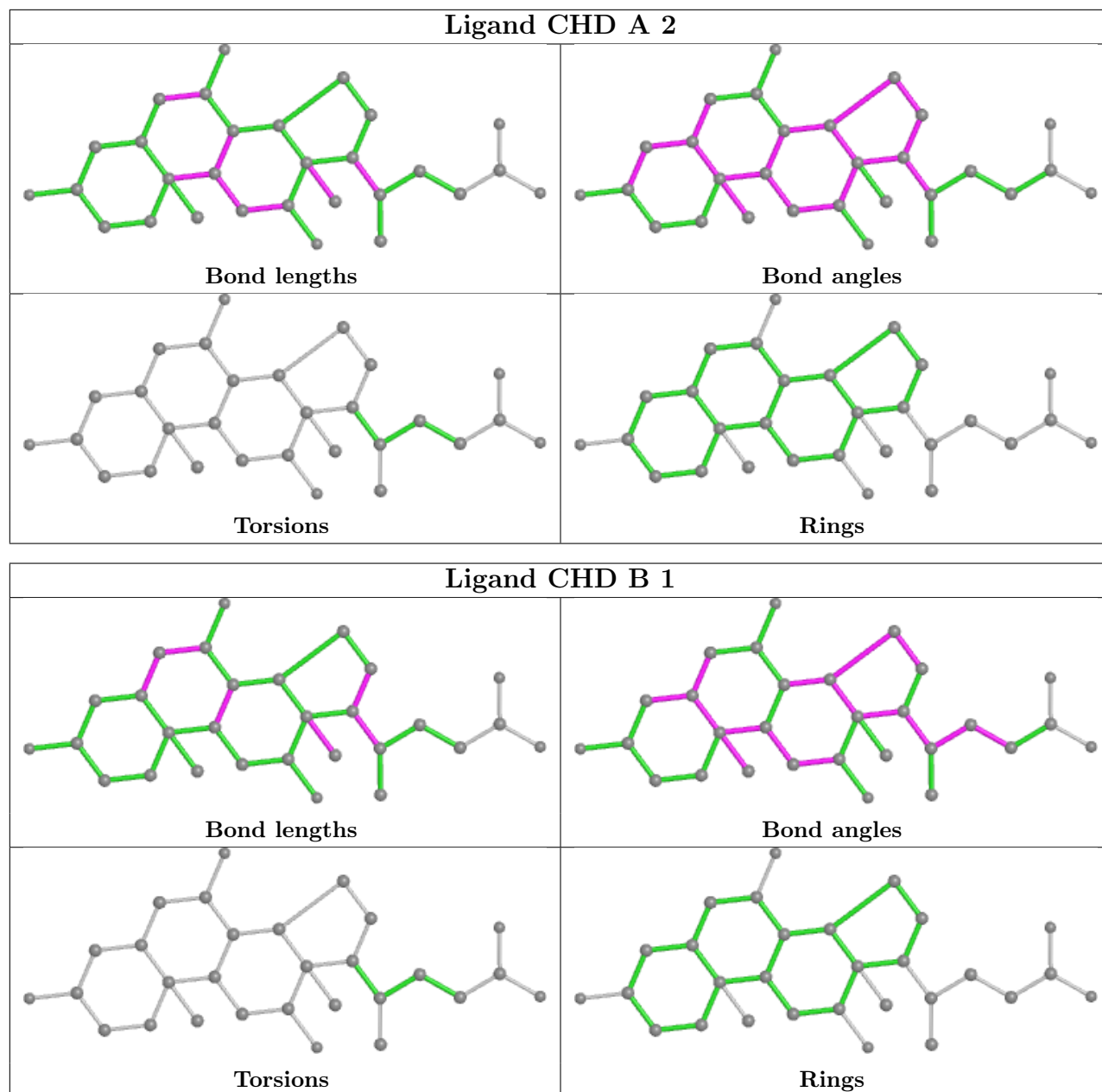
There are no ring outliers.

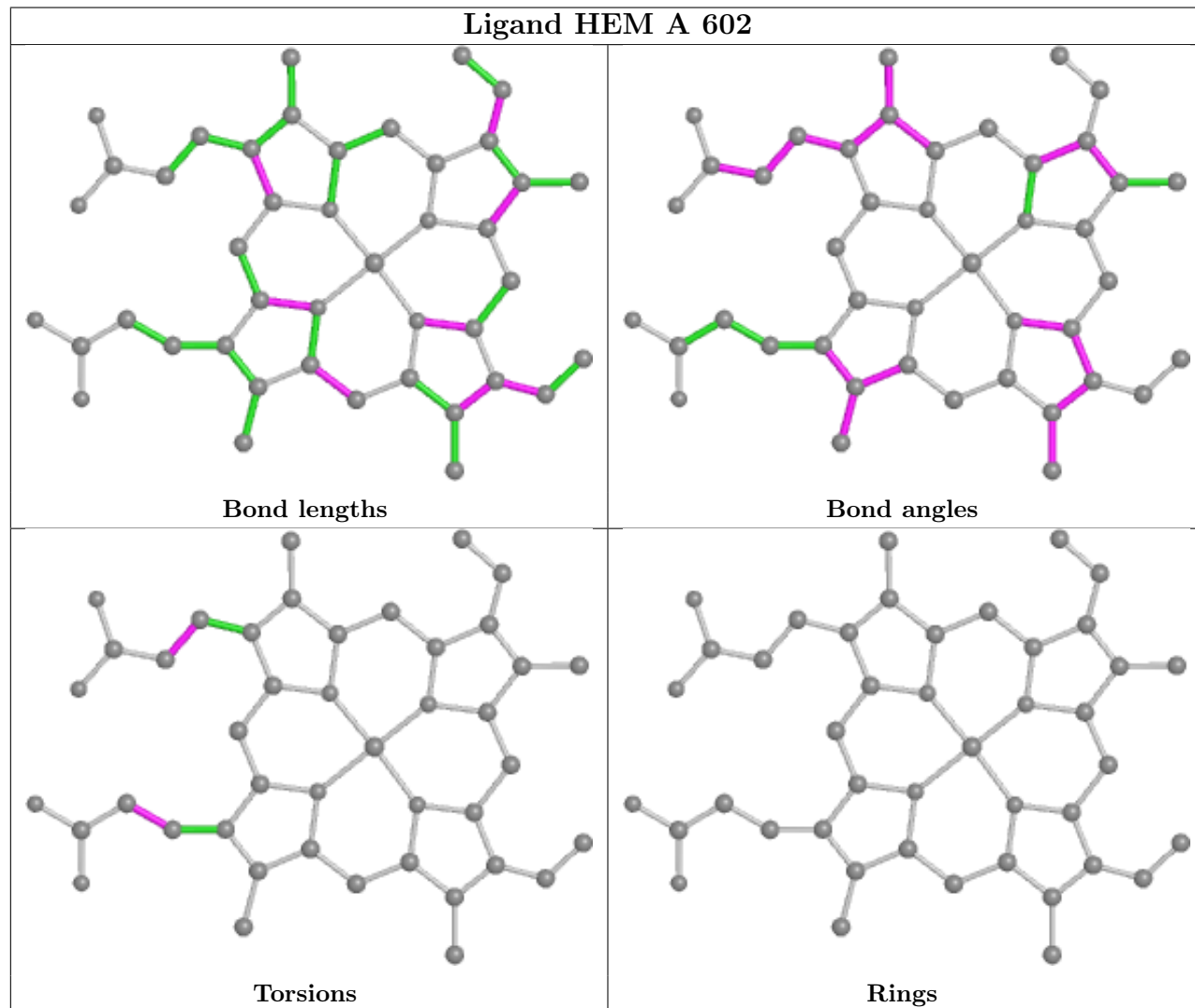
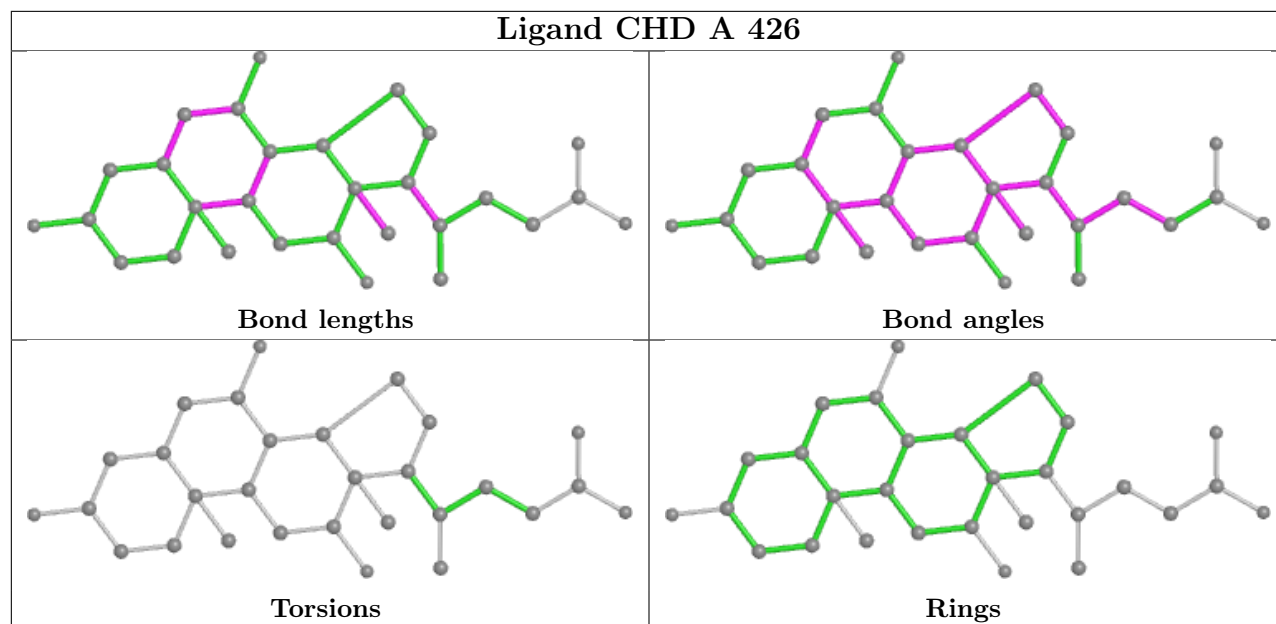
7 monomers are involved in 25 short contacts:

Mol	Chain	Res	Type	Clashes	Symm-Clashes
6	B	601	HEM	5	0
4	A	425	IMD	1	0
4	B	425	IMD	3	0
5	A	2	CHD	4	0
5	B	1	CHD	9	0
5	A	426	CHD	2	0
6	A	602	HEM	1	0

The following is a two-dimensional graphical depiction of Mogul quality analysis of bond lengths, bond angles, torsion angles, and ring geometry for all instances of the Ligand of Interest. In addition, ligands with molecular weight > 250 and outliers as shown on the validation Tables will also be included. For torsion angles, if less than 5% of the Mogul distribution of torsion angles is within 10 degrees of the torsion angle in question, then that torsion angle is considered an outlier. Any bond that is central to one or more torsion angles identified as an outlier by Mogul will be highlighted in the graph. For rings, the root-mean-square deviation (RMSD) between the ring in question and similar rings identified by Mogul is calculated over all ring torsion angles. If the average RMSD is greater than 60 degrees and the minimal RMSD between the ring in question and any Mogul-identified rings is also greater than 60 degrees, then that ring is considered an outlier. The outliers are highlighted in purple. The color gray indicates Mogul did not find sufficient equivalents in the CSD to analyse the geometry.







5.7 Other polymers [i](#)

There are no such residues in this entry.

5.8 Polymer linkage issues [i](#)

There are no chain breaks in this entry.

6 Fit of model and data [i](#)

6.1 Protein, DNA and RNA chains [i](#)

In the following table, the column labelled '#RSRZ > 2' contains the number (and percentage) of RSRZ outliers, followed by percent RSRZ outliers for the chain as percentile scores relative to all X-ray entries and entries of similar resolution. The OWAB column contains the minimum, median, 95th percentile and maximum values of the occupancy-weighted average B-factor per residue. The column labelled 'Q < 0.9' lists the number of (and percentage) of residues with an average occupancy less than 0.9.

Mol	Chain	Analysed	<RSRZ>	#RSRZ>2	OWAB(Å ²)	Q<0.9
1	A	359/359 (100%)	-0.18	3 (0%) 86 85	14, 30, 50, 59	0
1	B	359/359 (100%)	-0.11	8 (2%) 62 59	13, 30, 50, 59	0
All	All	718/718 (100%)	-0.14	11 (1%) 73 72	13, 30, 50, 59	0

All (11) RSRZ outliers are listed below:

Mol	Chain	Res	Type	RSRZ
1	B	303	SER	3.4
1	A	65	ARG	3.1
1	B	375	PRO	2.8
1	B	305	VAL	2.7
1	B	352	TYR	2.6
1	B	423	LEU	2.6
1	A	303	SER	2.6
1	B	358	LYS	2.6
1	B	350	ILE	2.3
1	B	351	GLU	2.3
1	A	352	TYR	2.2

6.2 Non-standard residues in protein, DNA, RNA chains [i](#)

There are no non-standard protein/DNA/RNA residues in this entry.

6.3 Carbohydrates [i](#)

There are no monosaccharides in this entry.

6.4 Ligands

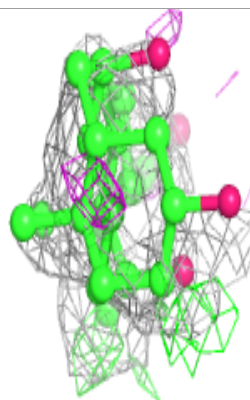
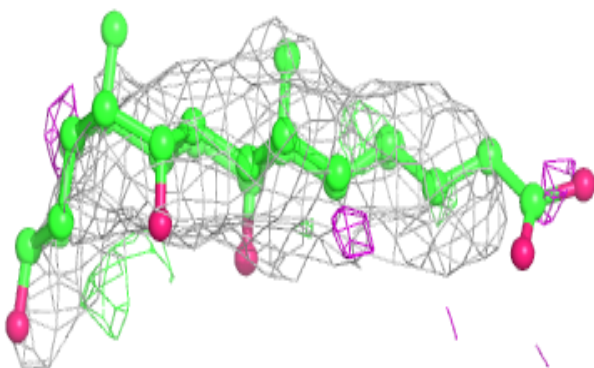
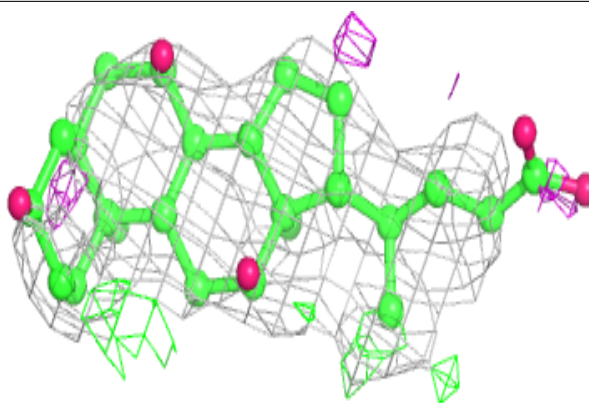
In the following table, the Atoms column lists the number of modelled atoms in the group and the number defined in the chemical component dictionary. The B-factors column lists the minimum, median, 95th percentile and maximum values of B factors of atoms in the group. The column labelled 'Q< 0.9' lists the number of atoms with occupancy less than 0.9.

Mol	Type	Chain	Res	Atoms	RSCC	RSR	B-factors(Å ²)	Q<0.9
5	CHD	A	2	29/29	0.62	0.34	81,81,83,84	0
5	CHD	B	4	29/29	0.63	0.51	95,95,96,96	0
5	CHD	B	1	29/29	0.71	0.36	90,91,93,93	0
5	CHD	A	426	29/29	0.76	0.34	89,89,91,91	0
2	BCT	A	1	4/4	0.85	0.18	50,51,51,51	0
2	BCT	B	2	4/4	0.91	0.28	30,31,32,32	0
4	IMD	A	3	5/5	0.92	0.16	32,32,32,32	0
6	HEM	A	602	43/43	0.94	0.17	24,28,33,35	0
6	HEM	B	601	43/43	0.94	0.14	26,27,33,35	0
4	IMD	A	425	5/5	0.96	0.13	34,34,34,34	0
3	FES	A	424	4/4	0.98	0.08	24,24,25,26	0
4	IMD	B	425	5/5	0.98	0.11	27,27,28,28	0
3	FES	B	424	4/4	0.99	0.07	23,24,25,25	0

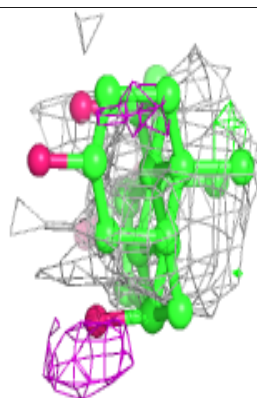
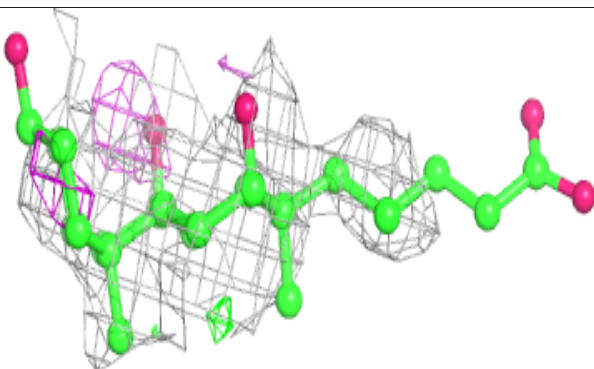
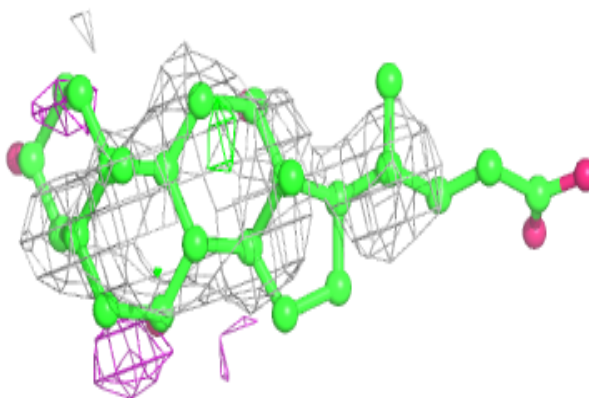
The following is a graphical depiction of the model fit to experimental electron density of all instances of the Ligand of Interest. In addition, ligands with molecular weight > 250 and outliers as shown on the geometry validation Tables will also be included. Each fit is shown from different orientation to approximate a three-dimensional view.

Electron density around CHD A 2:

$2mF_o-DF_c$ (at 0.7 rmsd) in gray
 mF_o-DF_c (at 3 rmsd) in purple (negative)
and green (positive)

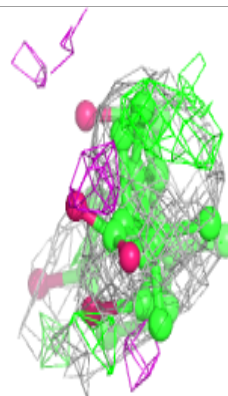
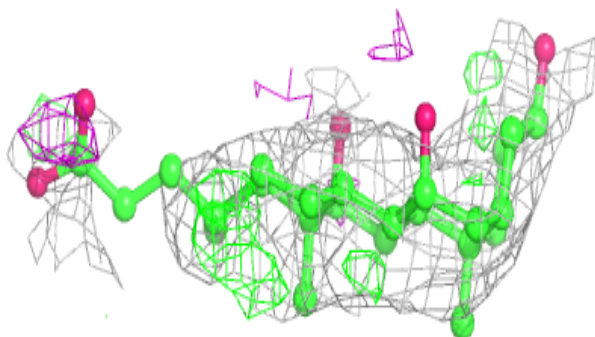
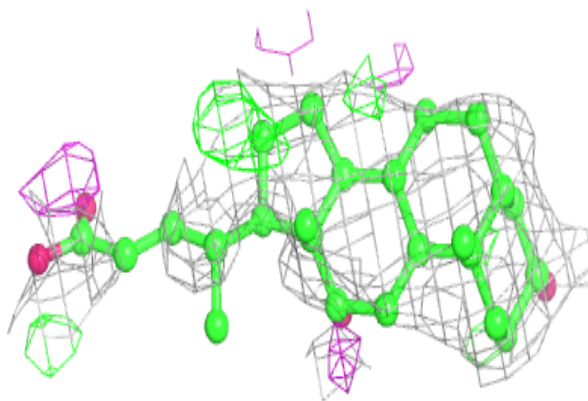
**Electron density around CHD B 4:**

$2mF_o-DF_c$ (at 0.7 rmsd) in gray
 mF_o-DF_c (at 3 rmsd) in purple (negative)
and green (positive)

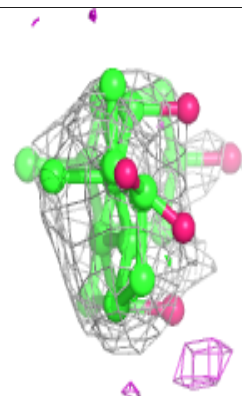
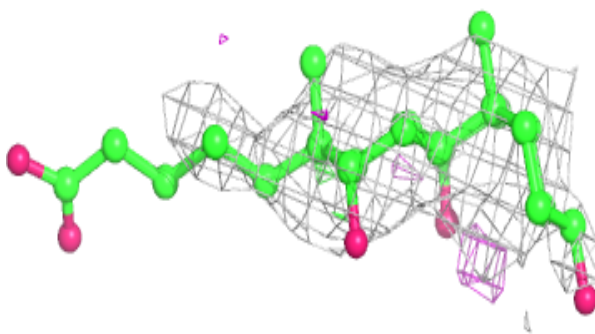
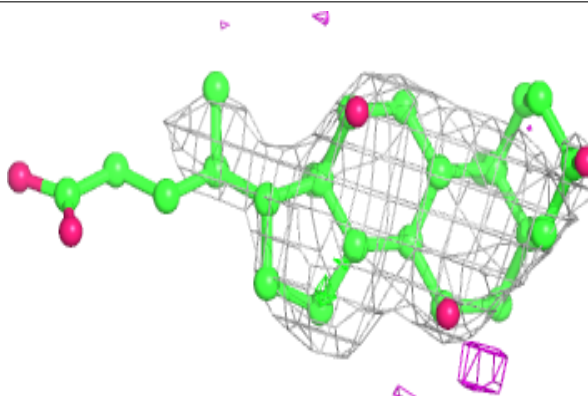


Electron density around CHD B 1:

$2mF_o-DF_c$ (at 0.7 rmsd) in gray
 mF_o-DF_c (at 3 rmsd) in purple (negative)
and green (positive)

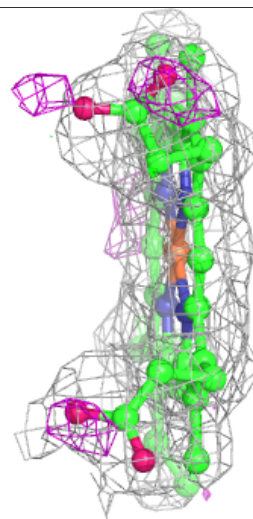
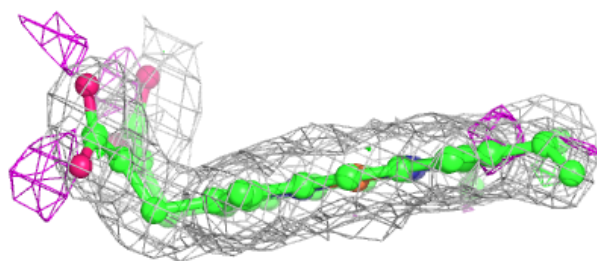
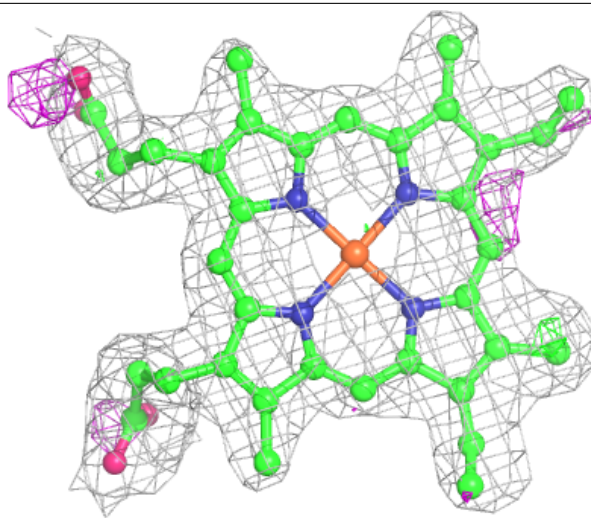
**Electron density around CHD A 426:**

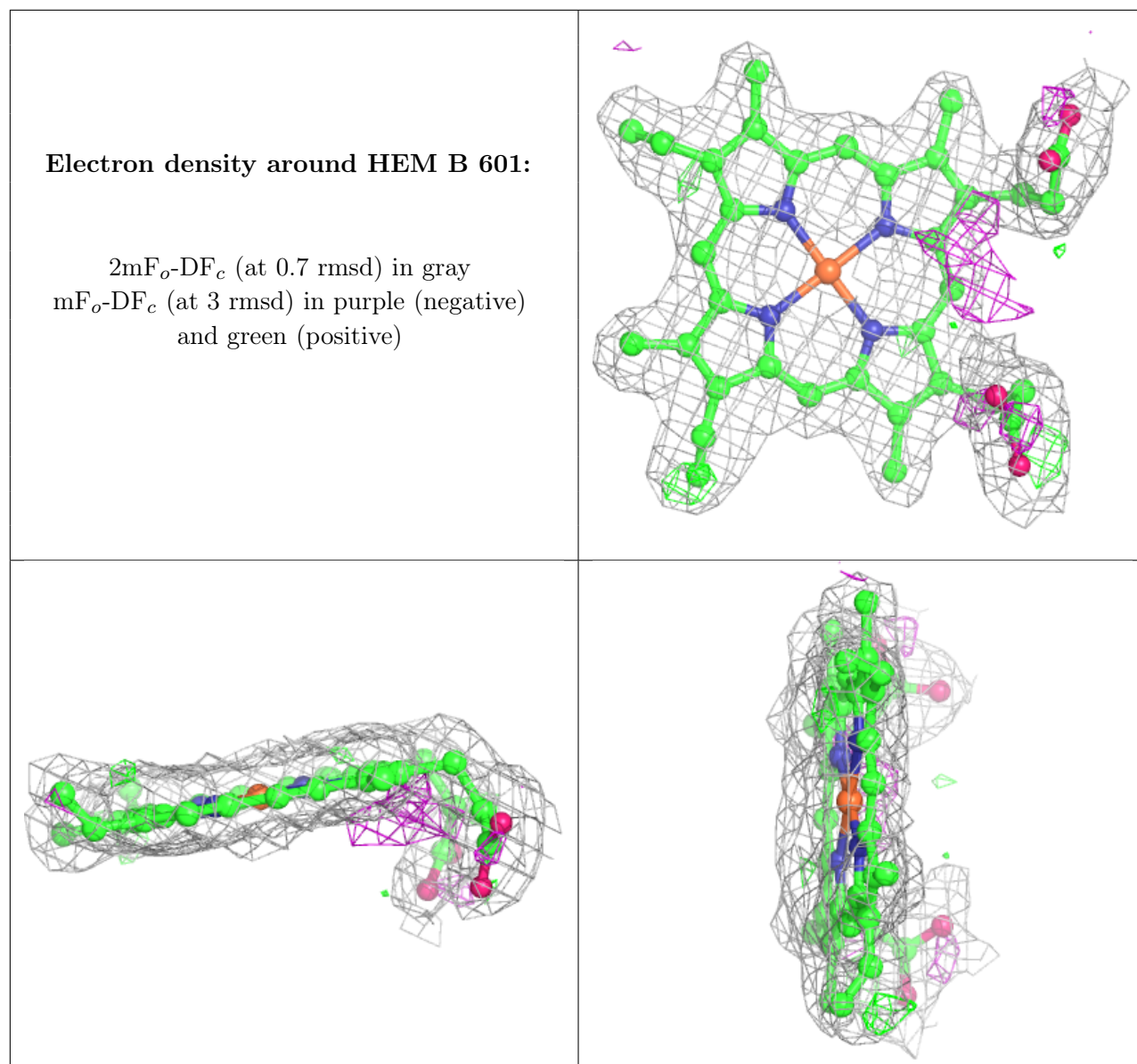
$2mF_o-DF_c$ (at 0.7 rmsd) in gray
 mF_o-DF_c (at 3 rmsd) in purple (negative)
and green (positive)



Electron density around HEM A 602:

$2mF_o-DF_c$ (at 0.7 rmsd) in gray
 mF_o-DF_c (at 3 rmsd) in purple (negative)
and green (positive)





6.5 Other polymers [\(i\)](#)

There are no such residues in this entry.