



# Full wwPDB NMR Structure Validation Report ⓘ

Dec 25, 2024 – 01:47 AM EST

PDB ID : 2NAA  
BMRB ID : 25933  
Title : NSD1-PHD\_5-C5HCH tandem domain structure  
Authors : Berardi, A.; Quilici, G.; Spiliotopoulos, D.; Musco, G.  
Deposited on : 2015-12-22

This is a Full wwPDB NMR Structure Validation Report for a publicly released PDB entry.

We welcome your comments at [validation@mail.wwpdb.org](mailto:validation@mail.wwpdb.org)

A user guide is available at

<https://www.wwpdb.org/validation/2017/NMRValidationReportHelp>

with specific help available everywhere you see the ⓘ symbol.

The types of validation reports are described at

<http://www.wwpdb.org/validation/2017/FAQs#types>.

---

The following versions of software and data (see [references ⓘ](#)) were used in the production of this report:

MolProbity : 4.02b-467  
Percentile statistics : 20231227.v01 (using entries in the PDB archive December 27th 2023)  
wwPDB-RCI : v\_1n\_11\_5\_13\_A (Berjanski et al., 2005)  
PANAV : Wang et al. (2010)  
wwPDB-ShiftChecker : v1.2  
BMRB Restraints Analysis : v1.2  
Ideal geometry (proteins) : Engh & Huber (2001)  
Ideal geometry (DNA, RNA) : Parkinson et al. (1996)  
Validation Pipeline (wwPDB-VP) : 2.40

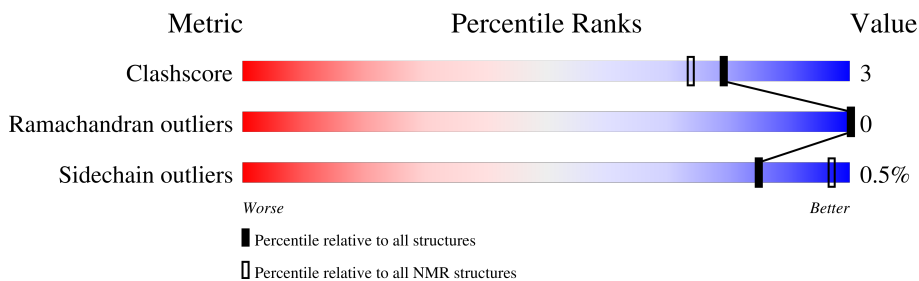
# 1 Overall quality at a glance

The following experimental techniques were used to determine the structure:

*SOLUTION NMR*

The overall completeness of chemical shifts assignment is 88%.

Percentile scores (ranging between 0-100) for global validation metrics of the entry are shown in the following graphic. The table shows the number of entries on which the scores are based.



Metric	Whole archive (#Entries)	NMR archive (#Entries)
Clashscore	210492	14027
Ramachandran outliers	207382	12486
Sidechain outliers	206894	12463

The table below summarises the geometric issues observed across the polymeric chains and their fit to the experimental data. The red, orange, yellow and green segments indicate the fraction of residues that contain outliers for  $\geq 3$ , 2, 1 and 0 types of geometric quality criteria. A cyan segment indicates the fraction of residues that are not part of the well-defined cores, and a grey segment represents the fraction of residues that are not modelled. The numeric value for each fraction is indicated below the corresponding segment, with a dot representing fractions  $\leq 5\%$

Mol	Chain	Length	Quality of chain
1	A	94	 87% 6% 6%

## 2 Ensemble composition and analysis

This entry contains 15 models. Model 6 is the overall representative, medoid model (most similar to other models). The authors have identified model 1 as representative, based on the following criterion: *lowest energy*.

The following residues are included in the computation of the global validation metrics.

Well-defined (core) protein residues			
Well-defined core	Residue range (total)	Backbone RMSD (Å)	Medoid model
1	A:7-A:94 (88)	0.60	6

Ill-defined regions of proteins are excluded from the global statistics.

Ligands and non-protein polymers are included in the analysis.

The models can be grouped into 2 clusters and 5 single-model clusters were found.

Cluster number	Models
1	5, 6, 11, 12, 13, 14, 15
2	4, 7, 8
Single-model clusters	1; 2; 3; 9; 10

### 3 Entry composition

There are 2 unique types of molecules in this entry. The entry contains 1396 atoms, of which 670 are hydrogens and 0 are deuteriums.

- Molecule 1 is a protein called Histone-lysine N-methyltransferase, H3 lysine-36 and H4 lysine-20 specific.

Mol	Chain	Residues	Atoms					Trace	
			Total	C	H	N	O		S
1	A	94	1392	442	670	128	137	15	0

There are 3 discrepancies between the modelled and reference sequences:

Chain	Residue	Modelled	Actual	Comment	Reference
A	1	GLY	-	expression tag	UNP O88491
A	2	ALA	-	expression tag	UNP O88491
A	3	MET	-	expression tag	UNP O88491

- Molecule 2 is ZINC ION (three-letter code: ZN) (formula: Zn).

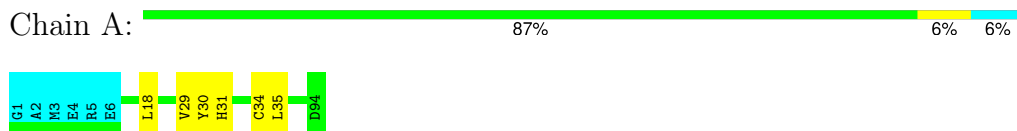
Mol	Chain	Residues	Atoms	
			Total	Zn
2	A	4	4	4

## 4 Residue-property plots

### 4.1 Average score per residue in the NMR ensemble

These plots are provided for all protein, RNA, DNA and oligosaccharide chains in the entry. The first graphic is the same as shown in the summary in section 1 of this report. The second graphic shows the sequence where residues are colour-coded according to the number of geometric quality criteria for which they contain at least one outlier: green = 0, yellow = 1, orange = 2 and red = 3 or more. Stretches of 2 or more consecutive residues without any outliers are shown as green connectors. Residues which are classified as ill-defined in the NMR ensemble, are shown in cyan with an underline colour-coded according to the previous scheme. Residues which were present in the experimental sample, but not modelled in the final structure are shown in grey.

- Molecule 1: Histone-lysine N-methyltransferase, H3 lysine-36 and H4 lysine-20 specific

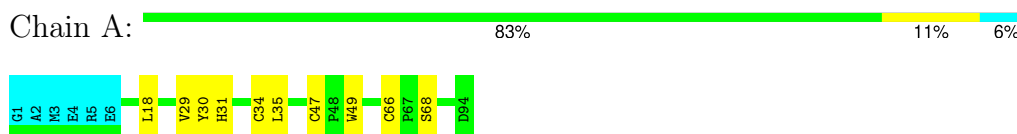


### 4.2 Scores per residue for each member of the ensemble

Colouring as in section 4.1 above.

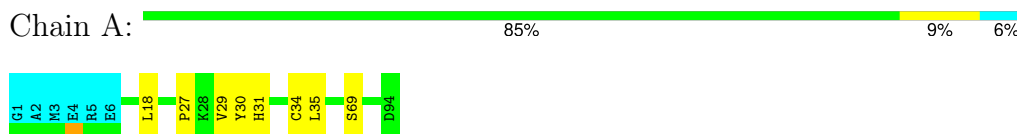
#### 4.2.1 Score per residue for model 1

- Molecule 1: Histone-lysine N-methyltransferase, H3 lysine-36 and H4 lysine-20 specific



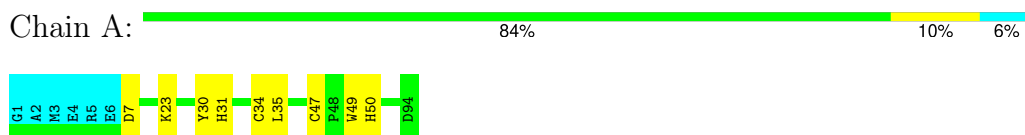
#### 4.2.2 Score per residue for model 2

- Molecule 1: Histone-lysine N-methyltransferase, H3 lysine-36 and H4 lysine-20 specific



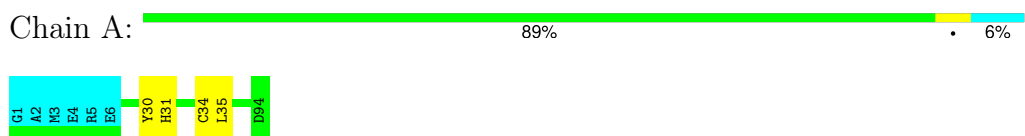
### 4.2.3 Score per residue for model 3

- Molecule 1: Histone-lysine N-methyltransferase, H3 lysine-36 and H4 lysine-20 specific



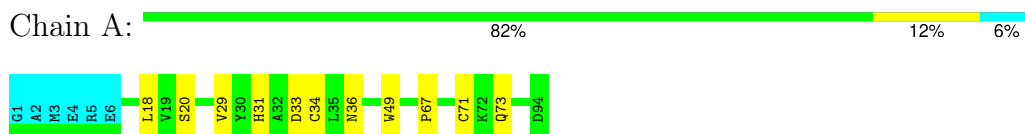
### 4.2.4 Score per residue for model 4

- Molecule 1: Histone-lysine N-methyltransferase, H3 lysine-36 and H4 lysine-20 specific



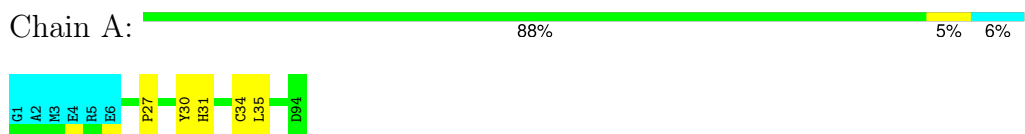
### 4.2.5 Score per residue for model 5

- Molecule 1: Histone-lysine N-methyltransferase, H3 lysine-36 and H4 lysine-20 specific



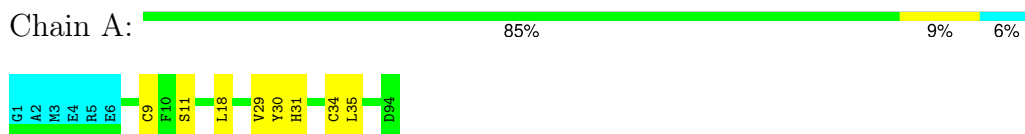
### 4.2.6 Score per residue for model 6 (medoid)

- Molecule 1: Histone-lysine N-methyltransferase, H3 lysine-36 and H4 lysine-20 specific



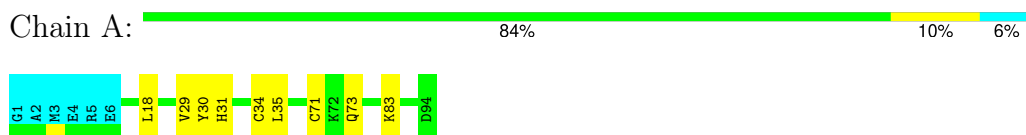
### 4.2.7 Score per residue for model 7

- Molecule 1: Histone-lysine N-methyltransferase, H3 lysine-36 and H4 lysine-20 specific



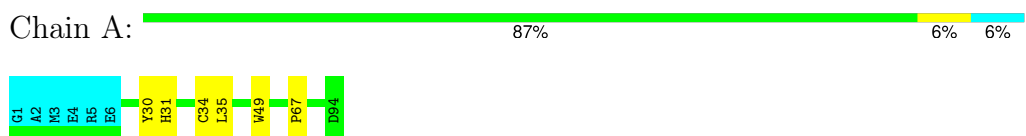
#### 4.2.8 Score per residue for model 8

- Molecule 1: Histone-lysine N-methyltransferase, H3 lysine-36 and H4 lysine-20 specific



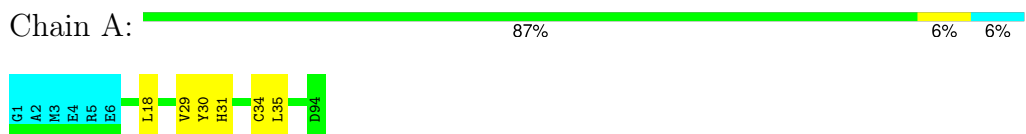
#### 4.2.9 Score per residue for model 9

- Molecule 1: Histone-lysine N-methyltransferase, H3 lysine-36 and H4 lysine-20 specific



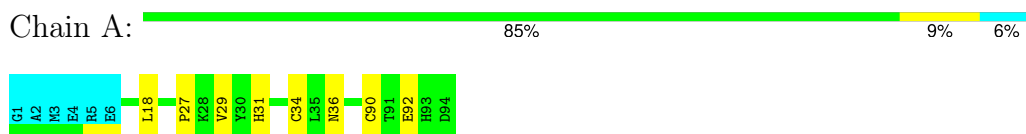
#### 4.2.10 Score per residue for model 10

- Molecule 1: Histone-lysine N-methyltransferase, H3 lysine-36 and H4 lysine-20 specific



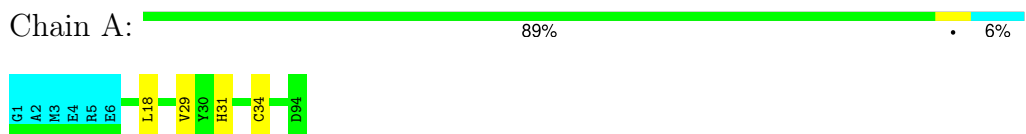
#### 4.2.11 Score per residue for model 11

- Molecule 1: Histone-lysine N-methyltransferase, H3 lysine-36 and H4 lysine-20 specific



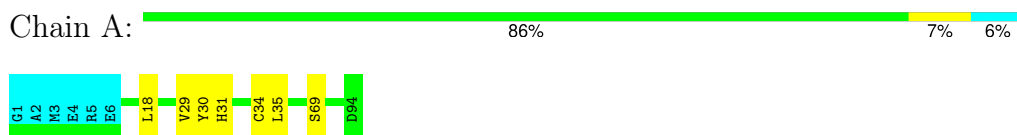
#### 4.2.12 Score per residue for model 12

- Molecule 1: Histone-lysine N-methyltransferase, H3 lysine-36 and H4 lysine-20 specific



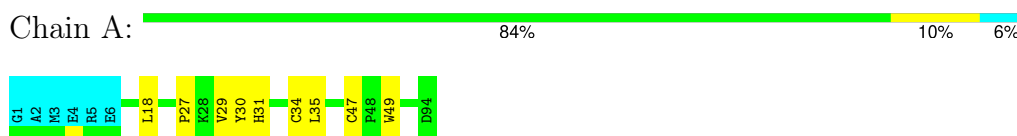
#### 4.2.13 Score per residue for model 13

- Molecule 1: Histone-lysine N-methyltransferase, H3 lysine-36 and H4 lysine-20 specific



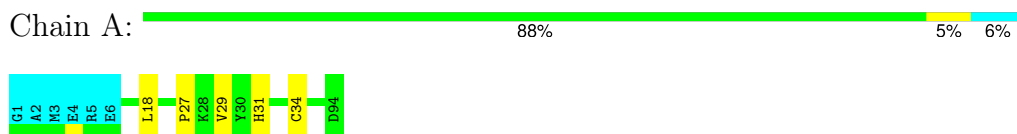
#### 4.2.14 Score per residue for model 14

- Molecule 1: Histone-lysine N-methyltransferase, H3 lysine-36 and H4 lysine-20 specific



#### 4.2.15 Score per residue for model 15

- Molecule 1: Histone-lysine N-methyltransferase, H3 lysine-36 and H4 lysine-20 specific





## 5 Refinement protocol and experimental data overview

The models were refined using the following method: *simulated annealing*.

Of the 40 calculated structures, 15 were deposited, based on the following criterion: *structures with the lowest energy*.

The following table shows the software used for structure solution, optimisation and refinement.

Software name	Classification	Version
ARIA	structure solution	2.3
ARIA	refinement	

The following table shows chemical shift validation statistics as aggregates over all chemical shift files. Detailed validation can be found in section 7 of this report.

Chemical shift file(s)	working_cs.cif
Number of chemical shift lists	1
Total number of shifts	1038
Number of shifts mapped to atoms	1038
Number of unparsed shifts	0
Number of shifts with mapping errors	0
Number of shifts with mapping warnings	0
Assignment completeness (well-defined parts)	88%

## 6 Model quality i

### 6.1 Standard geometry i

Bond lengths and bond angles in the following residue types are not validated in this section:  
ZN

There are no covalent bond-length or bond-angle outliers.

There are no bond-length outliers.

There are no bond-angle outliers.

There are no chirality outliers.

There are no planarity outliers.

### 6.2 Too-close contacts i

In the following table, the Non-H and H(model) columns list the number of non-hydrogen atoms and hydrogen atoms in each chain respectively. The H(added) column lists the number of hydrogen atoms added and optimized by MolProbity. The Clashes column lists the number of clashes averaged over the ensemble.

Mol	Chain	Non-H	H(model)	H(added)	Clashes
1	A	676	626	626	3±1
All	All	10200	9390	9390	50

The all-atom clashscore is defined as the number of clashes found per 1000 atoms (including hydrogen atoms). The all-atom clashscore for this structure is 3.

All unique clashes are listed below, sorted by their clash magnitude.

Atom-1	Atom-2	Clash(Å)	Distance(Å)	Models	
				Worst	Total
1:A:31:HIS:HB2	1:A:34:CYS:SG	0.73	2.24	1	15
1:A:30:TYR:HB2	1:A:35:LEU:HD11	0.58	1.74	4	11
1:A:23:LYS:HD3	1:A:50:HIS:CD2	0.57	2.35	3	1
1:A:66:CYS:SG	1:A:68:SER:HB2	0.56	2.41	1	1
1:A:18:LEU:HB3	1:A:29:VAL:HG22	0.55	1.79	5	11
1:A:9:CYS:SG	1:A:11:SER:HB3	0.50	2.45	7	1
1:A:49:TRP:CD1	1:A:67:PRO:HA	0.46	2.46	5	2
1:A:71:CYS:SG	1:A:73:GLN:HB2	0.46	2.51	8	2
1:A:31:HIS:HB3	1:A:33:ASP:OD2	0.45	2.10	5	1
1:A:90:CYS:SG	1:A:92:GLU:HB2	0.43	2.53	11	1
1:A:47:CYS:SG	1:A:49:TRP:HB3	0.42	2.54	14	3
1:A:20:SER:HA	1:A:29:VAL:HG23	0.42	1.90	5	1

## 6.3 Torsion angles [i](#)

### 6.3.1 Protein backbone [i](#)

In the following table, the Percentiles column shows the percent Ramachandran outliers of the chain as a percentile score with respect to all PDB entries followed by that with respect to all NMR entries. The Analysed column shows the number of residues for which the backbone conformation was analysed and the total number of residues.

Mol	Chain	Analysed	Favoured	Allowed	Outliers	Percentiles	
1	A	87/94 (93%)	82±1 (95±2%)	5±1 (5±2%)	0±0 (0±0%)	100	100
All	All	1305/1410 (93%)	1237 (95%)	68 (5%)	0 (0%)	100	100

There are no Ramachandran outliers.

### 6.3.2 Protein sidechains [i](#)

In the following table, the Percentiles column shows the percent sidechain outliers of the chain as a percentile score with respect to all PDB entries followed by that with respect to all NMR entries. The Analysed column shows the number of residues for which the sidechain conformation was analysed and the total number of residues.

Mol	Chain	Analysed	Rotameric	Outliers	Percentiles	
1	A	76/80 (95%)	76±0 (99±1%)	0±0 (1±1%)	85	97
All	All	1140/1200 (95%)	1134 (99%)	6 (1%)	85	97

All 4 unique residues with a non-rotameric sidechain are listed below. They are sorted by the frequency of occurrence in the ensemble.

Mol	Chain	Res	Type	Models (Total)
1	A	69	SER	2
1	A	36	ASN	2
1	A	7	ASP	1
1	A	83	LYS	1

### 6.3.3 RNA [i](#)

There are no RNA molecules in this entry.

## 6.4 Non-standard residues in protein, DNA, RNA chains [i](#)

There are no non-standard protein/DNA/RNA residues in this entry.

## 6.5 Carbohydrates [i](#)

There are no oligosaccharides in this entry.

## 6.6 Ligand geometry [i](#)

Of 4 ligands modelled in this entry, 4 are monoatomic - leaving 0 for Mogul analysis.

## 6.7 Other polymers [i](#)

There are no such molecules in this entry.

## 6.8 Polymer linkage issues [i](#)

There are no chain breaks in this entry.

## 7 Chemical shift validation (i)

The completeness of assignment taking into account all chemical shift lists is 88% for the well-defined parts and 88% for the entire structure.

### 7.1 Chemical shift list 1

File name: working\_cs.cif

Chemical shift list name: *assigned\_chem\_shift\_list\_1*

#### 7.1.1 Bookkeeping (i)

The following table shows the results of parsing the chemical shift list and reports the number of nuclei with statistically unusual chemical shifts.

Total number of shifts	1038
Number of shifts mapped to atoms	1038
Number of unparsed shifts	0
Number of shifts with mapping errors	0
Number of shifts with mapping warnings	0
Number of shift outliers (ShiftChecker)	2

#### 7.1.2 Chemical shift referencing (i)

The following table shows the suggested chemical shift referencing corrections.

Nucleus	# values	Correction $\pm$ precision, ppm	Suggested action
$^{13}\text{C}_\alpha$	92	$-0.23 \pm 0.23$	None needed ( $< 0.5$ ppm)
$^{13}\text{C}_\beta$	83	$0.04 \pm 0.09$	None needed ( $< 0.5$ ppm)
$^{13}\text{C}'$	84	$-0.13 \pm 0.22$	None needed ( $< 0.5$ ppm)
$^{15}\text{N}$	88	$-1.07 \pm 0.41$	Should be applied

#### 7.1.3 Completeness of resonance assignments (i)

The following table shows the completeness of the chemical shift assignments for the well-defined regions of the structure. The overall completeness is 88%, i.e. 978 atoms were assigned a chemical shift out of a possible 1107. 0 out of 9 assigned methyl groups (LEU and VAL) were assigned stereospecifically.

	Total	$^1\text{H}$	$^{13}\text{C}$	$^{15}\text{N}$
Backbone	425/437 (97%)	178/178 (100%)	164/176 (93%)	83/83 (100%)
Sidechain	476/569 (84%)	323/366 (88%)	151/182 (83%)	2/21 (10%)

*Continued on next page...*

Continued from previous page...

	<b>Total</b>	<b><sup>1</sup>H</b>	<b><sup>13</sup>C</b>	<b><sup>15</sup>N</b>
Aromatic	77/101 (76%)	45/52 (87%)	29/43 (67%)	3/6 (50%)
Overall	978/1107 (88%)	546/596 (92%)	344/401 (86%)	88/110 (80%)

The following table shows the completeness of the chemical shift assignments for the full structure. The overall completeness is 88%, i.e. 1036 atoms were assigned a chemical shift out of a possible 1184. 0 out of 9 assigned methyl groups (LEU and VAL) were assigned stereospecifically.

	<b>Total</b>	<b><sup>1</sup>H</b>	<b><sup>13</sup>C</b>	<b><sup>15</sup>N</b>
Backbone	452/468 (97%)	188/191 (98%)	176/188 (94%)	88/89 (99%)
Sidechain	507/615 (82%)	344/395 (87%)	161/196 (82%)	2/24 (8%)
Aromatic	77/101 (76%)	45/52 (87%)	29/43 (67%)	3/6 (50%)
Overall	1036/1184 (88%)	577/638 (90%)	366/427 (86%)	93/119 (78%)

#### 7.1.4 Statistically unusual chemical shifts [i](#)

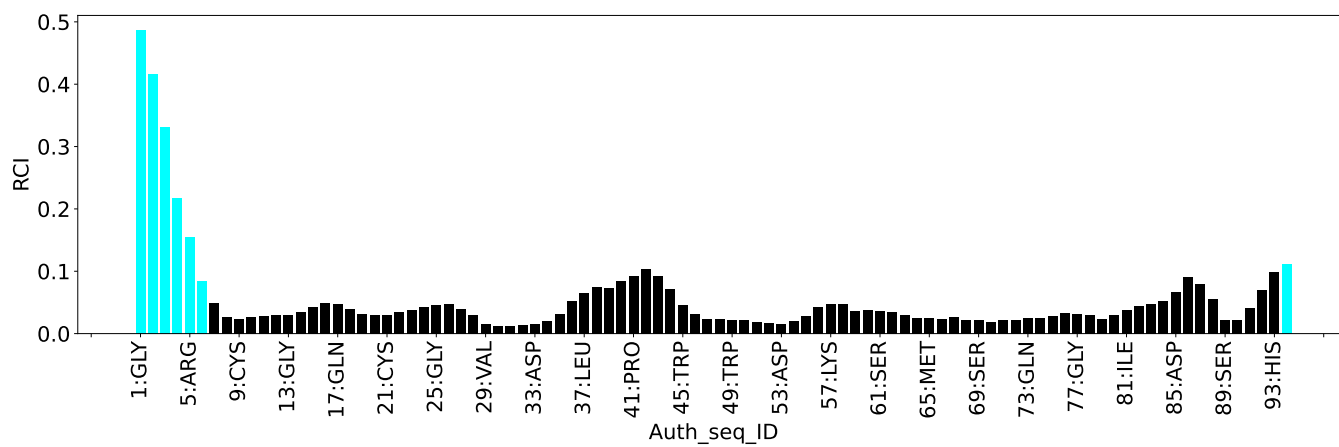
The following table lists the statistically unusual chemical shifts. These are statistical measures, and large deviations from the mean do not necessarily imply incorrect assignments. Molecules containing paramagnetic centres or hemes are expected to give rise to anomalous chemical shifts.

List Id	Chain	Res	Type	Atom	Shift, ppm	Expected range, ppm	Z-score
1	A	28	LYS	HD2	0.16	0.58 – 2.64	-7.0
1	A	28	LYS	HE3	1.61	1.92 – 3.89	-6.6

#### 7.1.5 Random Coil Index (RCI) plots [i](#)

The image below reports *random coil index* values for the protein chains in the structure. The height of each bar gives a probability of a given residue to be disordered, as predicted from the available chemical shifts and the amino acid sequence. A value above 0.2 is an indication of significant predicted disorder. The colour of the bar shows whether the residue is in the well-defined core (black) or in the ill-defined residue ranges (cyan), as described in section 2 on ensemble composition. If well-defined core and ill-defined regions are not identified then it is shown as gray bars.

Random coil index (RCI) for chain A:



## 8 NMR restraints analysis

### 8.1 Conformationally restricting restraints

The following table provides the summary of experimentally observed NMR restraints in different categories. Restraints are classified into different categories based on the sequence separation of the atoms involved.

Description	Value
Total distance restraints	1339
Intra-residue ( $ i-j =0$ )	623
Sequential ( $ i-j =1$ )	275
Medium range ( $ i-j >1$ and $ i-j <5$ )	98
Long range ( $ i-j \geq 5$ )	336
Inter-chain	0
Hydrogen bond restraints	7
Disulfide bond restraints	0
Total dihedral-angle restraints	114
Number of unmapped restraints	0
Number of restraints per residue	14.8
Number of long range restraints per residue <sup>1</sup>	3.5

<sup>1</sup>Long range hydrogen bonds and disulfide bonds are counted as long range restraints while calculating the number of long range restraints per residue

### 8.2 Residual restraint violations

This section provides the overview of the restraint violations analysis. The violations are binned as small, medium and large violations based on its absolute value. Average number of violations per model is calculated by dividing the total number of violations in each bin by the size of the ensemble.

#### 8.2.1 Average number of distance violations per model

Distance violations less than 0.1 Å are not included in the calculation.

Bins (Å)	Average number of violations per model	Max (Å)
0.1-0.2 (Small)	11.9	0.2
0.2-0.5 (Medium)	11.4	0.5
>0.5 (Large)	1.4	1.4



### 8.2.2 Average number of dihedral-angle violations per model [i](#)

Dihedral-angle violations less than 1° are not included in the calculation.

Bins (°)	Average number of violations per model	Max (°)
1.0-10.0 (Small)	11.0	5.25
10.0-20.0 (Medium)	None	None
>20.0 (Large)	None	None

## 9 Distance violation analysis [i](#)

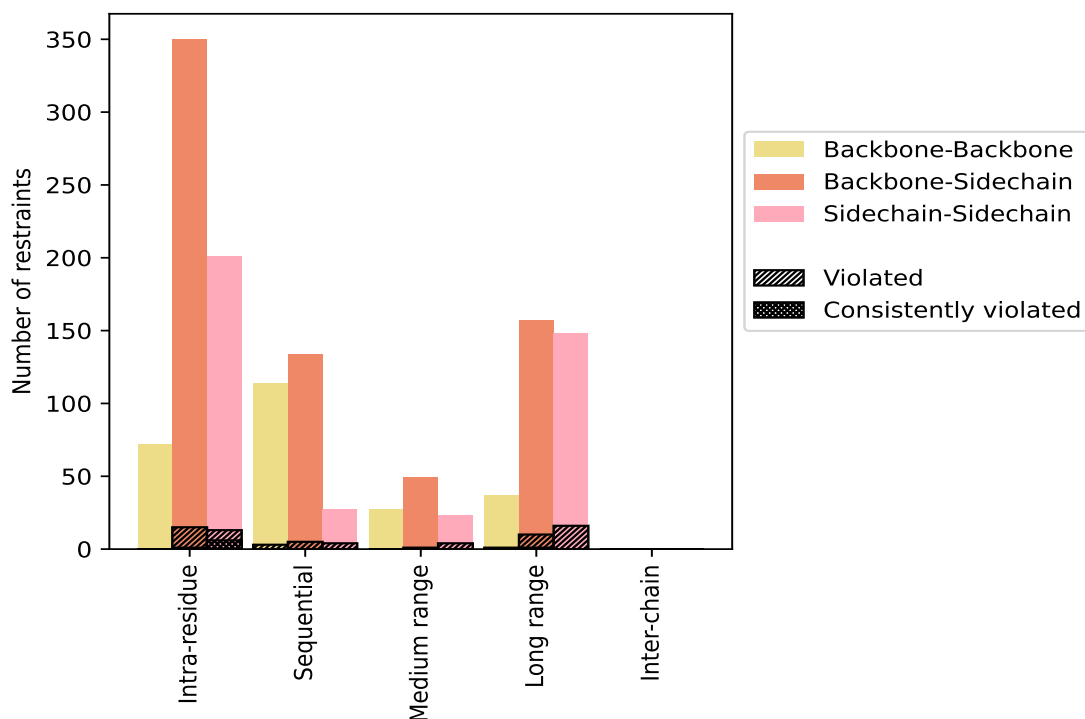
### 9.1 Summary of distance violations [i](#)

The following table shows the summary of distance violations in different restraint categories based on the sequence separation of the atoms involved. Each category is further sub-divided into three sub-categories based on the atoms involved. Violations less than 0.1 Å are not included in the statistics.

Restrains type	Count	% <sup>1</sup>	Violated <sup>3</sup>			Consistently Violated <sup>4</sup>		
			Count	% <sup>2</sup>	% <sup>1</sup>	Count	% <sup>2</sup>	% <sup>1</sup>
<b>Intra-residue (<math> i-j =0</math>)</b>	<b>623</b>	<b>46.5</b>	<b>28</b>	<b>4.5</b>	<b>2.1</b>	<b>7</b>	<b>1.1</b>	<b>0.5</b>
Backbone-Backbone	72	5.4	0	0.0	0.0	0	0.0	0.0
Backbone-Sidechain	350	26.1	15	4.3	1.1	1	0.3	0.1
Sidechain-Sidechain	201	15.0	13	6.5	1.0	6	3.0	0.4
<b>Sequential (<math> i-j =1</math>)</b>	<b>275</b>	<b>20.5</b>	<b>12</b>	<b>4.4</b>	<b>0.9</b>	<b>0</b>	<b>0.0</b>	<b>0.0</b>
Backbone-Backbone	114	8.5	3	2.6	0.2	0	0.0	0.0
Backbone-Sidechain	134	10.0	5	3.7	0.4	0	0.0	0.0
Sidechain-Sidechain	27	2.0	4	14.8	0.3	0	0.0	0.0
<b>Medium range (<math> i-j &gt;1</math> &amp; <math> i-j &lt;5</math>)</b>	<b>98</b>	<b>7.3</b>	<b>5</b>	<b>5.1</b>	<b>0.4</b>	<b>0</b>	<b>0.0</b>	<b>0.0</b>
Backbone-Backbone	27	2.0	0	0.0	0.0	0	0.0	0.0
Backbone-Sidechain	48	3.6	1	2.1	0.1	0	0.0	0.0
Sidechain-Sidechain	23	1.7	4	17.4	0.3	0	0.0	0.0
<b>Long range (<math> i-j \geq 5</math>)</b>	<b>336</b>	<b>25.1</b>	<b>25</b>	<b>7.4</b>	<b>1.9</b>	<b>1</b>	<b>0.3</b>	<b>0.1</b>
Backbone-Backbone	37	2.8	1	2.7	0.1	0	0.0	0.0
Backbone-Sidechain	151	11.3	8	5.3	0.6	1	0.7	0.1
Sidechain-Sidechain	148	11.1	16	10.8	1.2	0	0.0	0.0
<b>Inter-chain</b>	<b>0</b>	<b>0.0</b>	<b>0</b>	<b>0.0</b>	<b>0.0</b>	<b>0</b>	<b>0.0</b>	<b>0.0</b>
Backbone-Backbone	0	0.0	0	0.0	0.0	0	0.0	0.0
Backbone-Sidechain	0	0.0	0	0.0	0.0	0	0.0	0.0
Sidechain-Sidechain	0	0.0	0	0.0	0.0	0	0.0	0.0
<b>Hydrogen bond</b>	<b>7</b>	<b>0.5</b>	<b>2</b>	<b>28.6</b>	<b>0.1</b>	<b>0</b>	<b>0.0</b>	<b>0.0</b>
<b>Disulfide bond</b>	<b>0</b>	<b>0.0</b>	<b>0</b>	<b>0.0</b>	<b>0.0</b>	<b>0</b>	<b>0.0</b>	<b>0.0</b>
<b>Total</b>	<b>1339</b>	<b>100.0</b>	<b>72</b>	<b>5.4</b>	<b>5.4</b>	<b>8</b>	<b>0.6</b>	<b>0.6</b>
Backbone-Backbone	250	18.7	4	1.6	0.3	0	0.0	0.0
Backbone-Sidechain	690	51.5	31	4.5	2.3	2	0.3	0.1
Sidechain-Sidechain	399	29.8	37	9.3	2.8	6	1.5	0.4

<sup>1</sup> percentage calculated with respect to the total number of distance restraints, <sup>2</sup> percentage calculated with respect to the number of restraints in a particular restraint category, <sup>3</sup> violated in at least one model, <sup>4</sup> violated in all the models

### 9.1.1 Bar chart : Distribution of distance restraints and violations [i](#)



Violated and consistently violated restraints are shown using different hatch patterns in their respective categories. The hydrogen bonds and disulfid bonds are counted in their appropriate category on the x-axis

## 9.2 Distance violation statistics for each model [i](#)

The following table provides the distance violation statistics for each model in the ensemble. Violations less than 0.1 Å are not included in the statistics.

Model ID	Number of violations						Mean (Å)	Max (Å)	SD <sup>6</sup> (Å)	Median (Å)
	IR <sup>1</sup>	SQ <sup>2</sup>	MR <sup>3</sup>	LR <sup>4</sup>	IC <sup>5</sup>	Total				
1	16	2	3	6	0	27	0.29	1.14	0.24	0.21
2	18	3	1	4	0	26	0.21	0.64	0.12	0.16
3	15	4	3	2	0	24	0.28	1.0	0.2	0.22
4	15	4	2	9	0	30	0.33	1.39	0.27	0.24
5	11	4	3	5	0	23	0.31	1.4	0.27	0.22
6	13	2	1	5	0	21	0.24	0.54	0.13	0.17
7	14	6	1	5	0	26	0.28	1.16	0.21	0.22
8	15	4	1	6	0	26	0.24	0.53	0.12	0.22
9	14	3	2	9	0	28	0.28	0.81	0.17	0.22
10	12	3	2	4	0	21	0.23	0.47	0.11	0.19

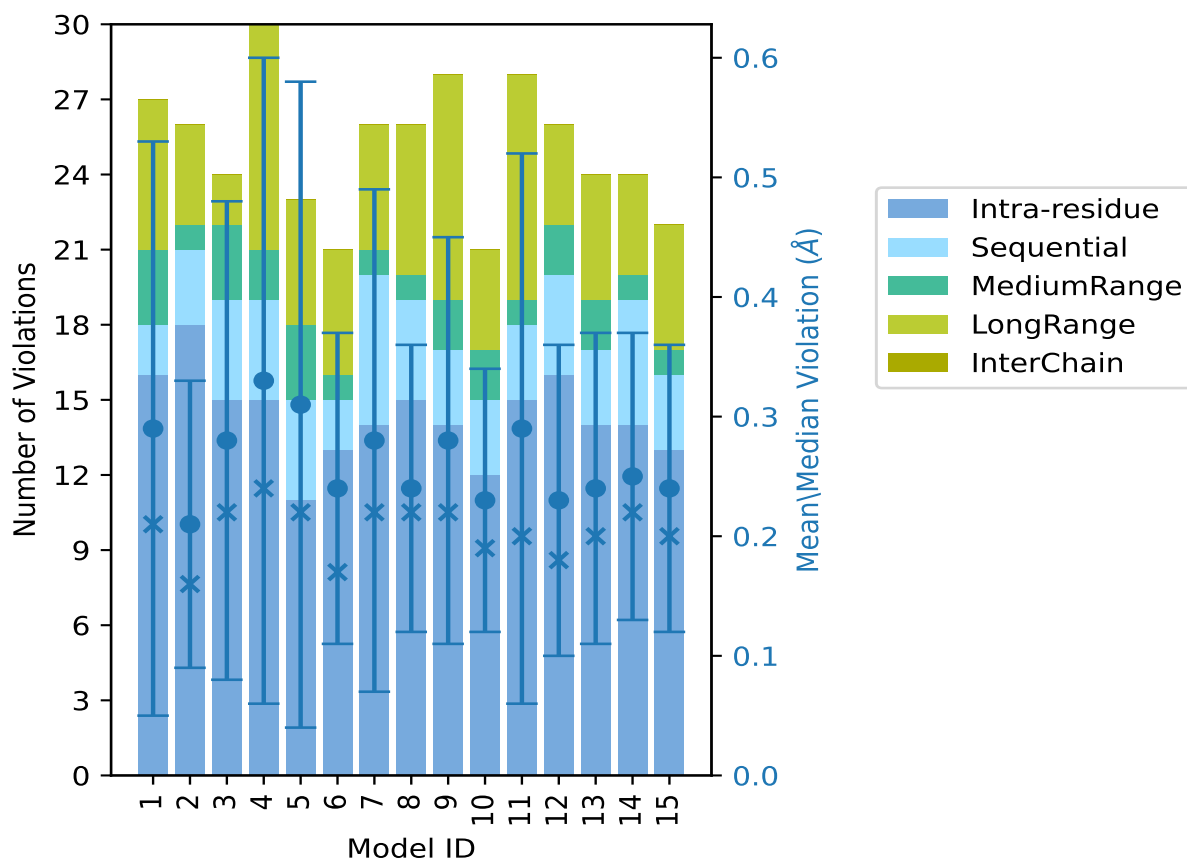
*Continued on next page...*

Continued from previous page...

Model ID	Number of violations					Total	Mean (Å)	Max (Å)	SD <sup>6</sup> (Å)	Median (Å)
	IR <sup>1</sup>	SQ <sup>2</sup>	MR <sup>3</sup>	LR <sup>4</sup>	IC <sup>5</sup>					
11	15	3	1	9	0	28	0.29	1.24	0.23	0.2
12	16	4	2	4	0	26	0.23	0.62	0.13	0.18
13	14	3	2	5	0	24	0.24	0.48	0.13	0.2
14	14	5	1	4	0	24	0.25	0.46	0.12	0.22
15	13	3	1	5	0	22	0.24	0.45	0.12	0.2

<sup>1</sup>Intra-residue restraints, <sup>2</sup>Sequential restraints, <sup>3</sup>Medium range restraints, <sup>4</sup>Long range restraints, <sup>5</sup>Inter-chain restraints, <sup>6</sup>Standard deviation

### 9.2.1 Bar graph : Distance Violation statistics for each model [i](#)



The mean(dot),median(x) and the standard deviation are shown in blue with respect to the y axis on the right

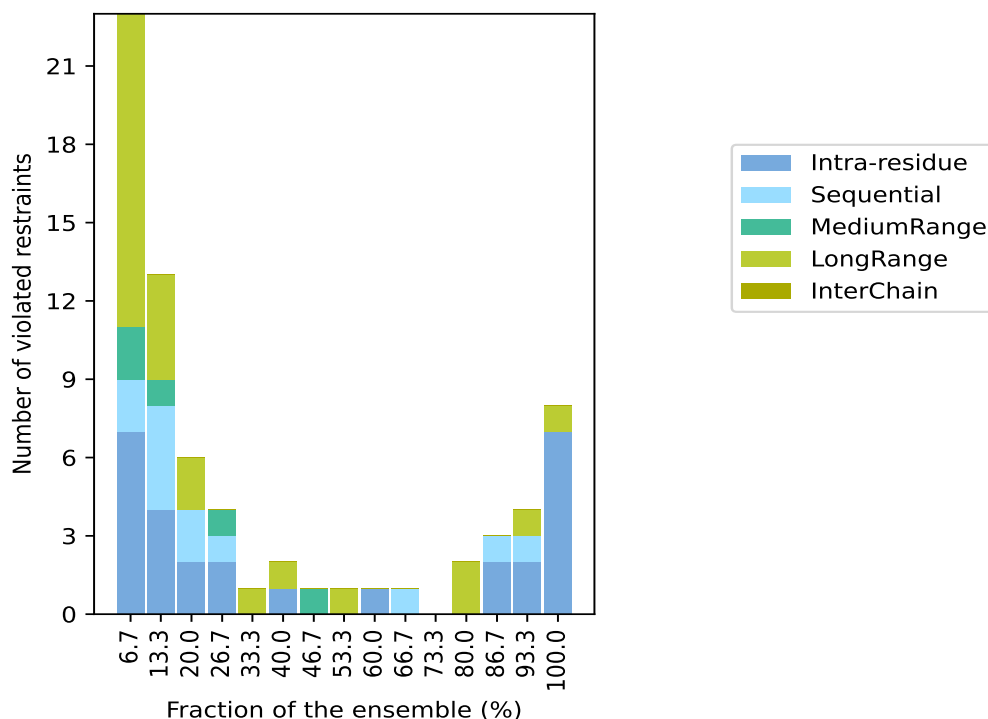
### 9.3 Distance violation statistics for the ensemble

Violation analysis may find that some restraints are violated in few models and some are violated in most of models. The following table provides this information as number of violated restraints for a given fraction of the ensemble. In total, 1262(IR:595, SQ:263, MR:93, LR:311, IC:0) restraints are not violated in the ensemble.

Number of violated restraints						Fraction of the ensemble	
IR <sup>1</sup>	SQ <sup>2</sup>	MR <sup>3</sup>	LR <sup>4</sup>	IC <sup>5</sup>	Total	Count <sup>6</sup>	%
7	2	2	12	0	23	1	6.7
4	4	1	4	0	13	2	13.3
2	2	0	2	0	6	3	20.0
2	1	1	0	0	4	4	26.7
0	0	0	1	0	1	5	33.3
1	0	0	1	0	2	6	40.0
0	0	1	0	0	1	7	46.7
0	0	0	1	0	1	8	53.3
1	0	0	0	0	1	9	60.0
0	1	0	0	0	1	10	66.7
0	0	0	0	0	0	11	73.3
0	0	0	2	0	2	12	80.0
2	1	0	0	0	3	13	86.7
2	1	0	1	0	4	14	93.3
7	0	0	1	0	8	15	100.0

<sup>1</sup>Intra-residue restraints, <sup>2</sup>Sequential restraints, <sup>3</sup>Medium range restraints, <sup>4</sup>Long range restraints, <sup>5</sup>Inter-chain restraints, <sup>6</sup> Number of models with violations

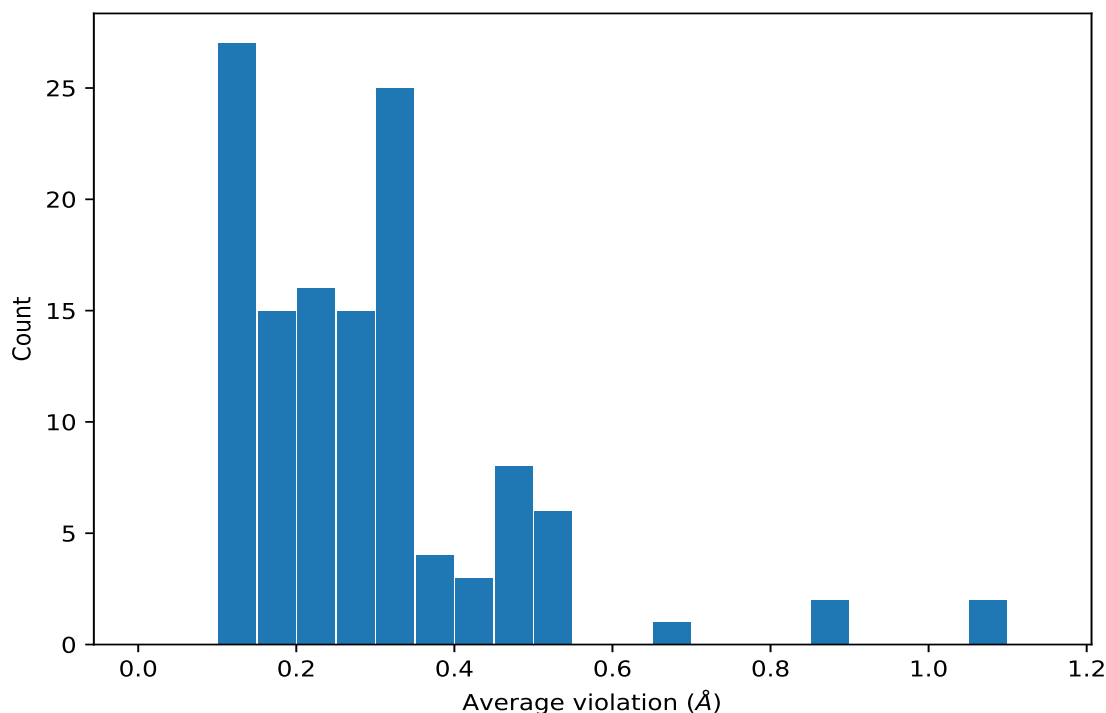
### 9.3.1 Bar graph : Distance violation statistics for the ensemble [i](#)



## 9.4 Most violated distance restraints in the ensemble [i](#)

### 9.4.1 Histogram : Distribution of mean distance violations [i](#)

The following histogram shows the distribution of the average value of the violation. The average is calculated for each restraint that is violated in more than one model over all the violated models in the ensemble



#### 9.4.2 Table: Most violated distance restraints [i](#)

The following table provides the mean and the standard deviation of the violation for each restraint sorted by number of violated models and the mean value. The Key (restraint list ID, restraint ID) is the unique identifier for a given restraint. Rows with same key represent combinatorial or ambiguous restraints and are counted as a single restraint.

Key	Atom-1	Atom-2	Models <sup>1</sup>	Mean (Å)	SD <sup>1</sup> (Å)	Median (Å)
(1,81)	1:54:A:VAL:HG13	1:54:A:VAL:HG21	15	0.45	0.01	0.45
(1,81)	1:54:A:VAL:HG13	1:54:A:VAL:HG23	15	0.45	0.01	0.45
(1,81)	1:54:A:VAL:HG12	1:54:A:VAL:HG21	15	0.45	0.01	0.45
(1,81)	1:54:A:VAL:HG11	1:54:A:VAL:HG23	15	0.45	0.01	0.45
(1,81)	1:54:A:VAL:HG11	1:54:A:VAL:HG22	15	0.45	0.01	0.45
(1,81)	1:54:A:VAL:HG13	1:54:A:VAL:HG22	15	0.45	0.01	0.45
(1,81)	1:54:A:VAL:HG12	1:54:A:VAL:HG22	15	0.45	0.01	0.45
(1,81)	1:54:A:VAL:HG11	1:54:A:VAL:HG21	15	0.45	0.01	0.45
(1,1215)	1:63:A:CYS:HA	1:61:A:SER:HB2	15	0.4	0.1	0.41
(1,1215)	1:63:A:CYS:HA	1:68:A:SER:HB2	15	0.4	0.1	0.41
(1,197)	1:29:A:VAL:HG23	1:29:A:VAL:HG13	15	0.27	0.04	0.27
(1,197)	1:29:A:VAL:HG21	1:29:A:VAL:HG12	15	0.27	0.04	0.27
(1,197)	1:29:A:VAL:HG22	1:29:A:VAL:HG13	15	0.27	0.04	0.27
(1,197)	1:29:A:VAL:HG21	1:29:A:VAL:HG11	15	0.27	0.04	0.27
(1,197)	1:29:A:VAL:HG22	1:29:A:VAL:HG12	15	0.27	0.04	0.27
(1,197)	1:29:A:VAL:HG21	1:29:A:VAL:HG13	15	0.27	0.04	0.27

*Continued on next page...*

Continued from previous page...

Key	Atom-1	Atom-2	Models <sup>1</sup>	Mean (Å)	SD <sup>1</sup> (Å)	Median (Å)
(1,197)	1:29:A:VAL:HG22	1:29:A:VAL:HG11	15	0.27	0.04	0.27
(1,157)	1:15:A:ALA:HA	1:15:A:ALA:HB3	15	0.2	0.01	0.21
(1,157)	1:15:A:ALA:HA	1:15:A:ALA:HB2	15	0.2	0.01	0.21
(1,157)	1:15:A:ALA:HA	1:15:A:ALA:HB1	15	0.2	0.01	0.21
(1,1193)	1:37:A:LEU:HD21	1:37:A:LEU:HG	15	0.18	0.01	0.18
(1,1193)	1:37:A:LEU:HD22	1:37:A:LEU:HG	15	0.18	0.01	0.18
(1,1193)	1:37:A:LEU:HD23	1:37:A:LEU:HG	15	0.18	0.01	0.18
(1,135)	1:18:A:LEU:HD23	1:18:A:LEU:HG	15	0.17	0.01	0.17
(1,135)	1:18:A:LEU:HD21	1:18:A:LEU:HG	15	0.17	0.01	0.17
(1,135)	1:18:A:LEU:HD22	1:18:A:LEU:HG	15	0.17	0.01	0.17
(1,121)	1:81:A:ILE:HG21	1:81:A:ILE:HB	15	0.12	0.0	0.12
(1,121)	1:81:A:ILE:HG22	1:81:A:ILE:HB	15	0.12	0.0	0.12
(1,121)	1:81:A:ILE:HG23	1:81:A:ILE:HB	15	0.12	0.0	0.12
(1,77)	1:54:A:VAL:HB	1:54:A:VAL:HG12	15	0.12	0.01	0.12
(1,77)	1:54:A:VAL:HB	1:54:A:VAL:HG11	15	0.12	0.01	0.12
(1,77)	1:54:A:VAL:HB	1:54:A:VAL:HG13	15	0.12	0.01	0.12
(1,388)	1:29:A:VAL:HB	1:18:A:LEU:HD21	14	0.29	0.08	0.29
(1,388)	1:29:A:VAL:HB	1:18:A:LEU:HD22	14	0.29	0.08	0.29
(1,388)	1:29:A:VAL:HB	1:18:A:LEU:HD23	14	0.29	0.08	0.29
(1,352)	1:59:A:ALA:HB2	1:60:A:ALA:HB1	14	0.2	0.05	0.2
(1,352)	1:59:A:ALA:HB2	1:60:A:ALA:HB2	14	0.2	0.05	0.2
(1,352)	1:59:A:ALA:HB3	1:60:A:ALA:HB2	14	0.2	0.05	0.2
(1,352)	1:59:A:ALA:HB3	1:60:A:ALA:HB3	14	0.2	0.05	0.2
(1,352)	1:59:A:ALA:HB1	1:60:A:ALA:HB1	14	0.2	0.05	0.2
(1,352)	1:59:A:ALA:HB2	1:60:A:ALA:HB3	14	0.2	0.05	0.2
(1,352)	1:59:A:ALA:HB1	1:60:A:ALA:HB2	14	0.2	0.05	0.2
(1,1146)	1:38:A:THR:HG21	1:38:A:THR:HB	14	0.13	0.02	0.14
(1,1146)	1:38:A:THR:HG23	1:38:A:THR:HB	14	0.13	0.02	0.14
(1,1146)	1:38:A:THR:HA	1:38:A:THR:HG22	14	0.13	0.02	0.14
(1,1146)	1:38:A:THR:HG22	1:38:A:THR:HB	14	0.13	0.02	0.14
(1,1146)	1:38:A:THR:HA	1:38:A:THR:HG23	14	0.13	0.02	0.14
(1,201)	1:29:A:VAL:HB	1:29:A:VAL:HG21	14	0.12	0.02	0.11
(1,201)	1:29:A:VAL:HB	1:29:A:VAL:HG22	14	0.12	0.02	0.11
(1,201)	1:29:A:VAL:HB	1:29:A:VAL:HG23	14	0.12	0.02	0.11
(1,1244)	1:93:A:HIS:HD2	1:92:A:GLU:HB3	13	0.39	0.15	0.34
(1,1093)	1:45:A:TRP:HH2	1:45:A:TRP:HA	13	0.16	0.06	0.14
(1,136)	1:18:A:LEU:HD22	1:18:A:LEU:HD13	13	0.13	0.02	0.12
(1,136)	1:18:A:LEU:HD23	1:18:A:LEU:HD11	13	0.13	0.02	0.12
(1,136)	1:18:A:LEU:HD22	1:18:A:LEU:HD12	13	0.13	0.02	0.12
(1,136)	1:18:A:LEU:HD23	1:18:A:LEU:HD12	13	0.13	0.02	0.12
(1,136)	1:18:A:LEU:HD21	1:18:A:LEU:HD12	13	0.13	0.02	0.12
(1,136)	1:18:A:LEU:HD23	1:18:A:LEU:HD13	13	0.13	0.02	0.12

Continued on next page...



Continued from previous page...

Key	Atom-1	Atom-2	Models <sup>1</sup>	Mean (Å)	SD <sup>1</sup> (Å)	Median (Å)
(1,136)	1:18:A:LEU:HD21	1:18:A:LEU:HD11	13	0.13	0.02	0.12
(1,136)	1:18:A:LEU:HD22	1:18:A:LEU:HD11	13	0.13	0.02	0.12
(1,1191)	1:37:A:LEU:HD13	1:37:A:LEU:HD23	12	0.31	0.06	0.34
(1,1191)	1:37:A:LEU:HD13	1:37:A:LEU:HD21	12	0.31	0.06	0.34
(1,1191)	1:37:A:LEU:HD12	1:37:A:LEU:HD22	12	0.31	0.06	0.34
(1,1191)	1:37:A:LEU:HD13	1:19:A:VAL:HG13	12	0.31	0.06	0.34
(1,1191)	1:37:A:LEU:HD12	1:37:A:LEU:HD21	12	0.31	0.06	0.34
(1,1191)	1:37:A:LEU:HD12	1:19:A:VAL:HG13	12	0.31	0.06	0.34
(1,1191)	1:37:A:LEU:HD11	1:19:A:VAL:HG13	12	0.31	0.06	0.34
(1,1191)	1:37:A:LEU:HD11	1:37:A:LEU:HD23	12	0.31	0.06	0.34
(1,1191)	1:37:A:LEU:HD13	1:37:A:LEU:HD22	12	0.31	0.06	0.34
(1,376)	1:32:A:ALA:HB1	1:19:A:VAL:HG12	12	0.31	0.14	0.32
(1,376)	1:32:A:ALA:HB3	1:19:A:VAL:HG11	12	0.31	0.14	0.32
(1,376)	1:32:A:ALA:HB1	1:19:A:VAL:HG13	12	0.31	0.14	0.32
(1,376)	1:32:A:ALA:HB1	1:19:A:VAL:HG11	12	0.31	0.14	0.32
(1,376)	1:32:A:ALA:HB3	1:19:A:VAL:HG12	12	0.31	0.14	0.32
(1,376)	1:32:A:ALA:HB2	1:19:A:VAL:HG13	12	0.31	0.14	0.32
(1,376)	1:32:A:ALA:HB3	1:19:A:VAL:HG13	12	0.31	0.14	0.32
(1,277)	1:89:A:SER:HA	1:88:A:LEU:HB3	10	0.17	0.07	0.13
(1,207)	1:39:A:LYS:HA	1:39:A:LYS:HB2	9	0.22	0.0	0.22
(1,1236)	1:7:A:ASP:HB3	1:15:A:ALA:HB1	8	0.5	0.36	0.42
(1,1236)	1:7:A:ASP:HB3	1:15:A:ALA:HB2	8	0.5	0.36	0.42
(1,1236)	1:7:A:ASP:HB2	1:15:A:ALA:HB3	8	0.5	0.36	0.42
(1,1236)	1:7:A:ASP:HB2	1:15:A:ALA:HB2	8	0.5	0.36	0.42
(1,1236)	1:7:A:ASP:HB3	1:15:A:ALA:HB3	8	0.5	0.36	0.42
(1,1236)	1:7:A:ASP:HB2	1:15:A:ALA:HB1	8	0.5	0.36	0.42
(1,1023)	1:62:A:PHE:HE2	1:60:A:ALA:HA	7	0.37	0.08	0.34
(1,212)	1:37:A:LEU:HD12	1:32:A:ALA:HB1	6	0.33	0.12	0.38
(1,212)	1:37:A:LEU:HD12	1:32:A:ALA:HB2	6	0.33	0.12	0.38
(1,212)	1:37:A:LEU:HD12	1:32:A:ALA:HB3	6	0.33	0.12	0.38
(1,212)	1:37:A:LEU:HD11	1:32:A:ALA:HB2	6	0.33	0.12	0.38
(1,212)	1:37:A:LEU:HD11	1:32:A:ALA:HB1	6	0.33	0.12	0.38
(1,120)	1:81:A:ILE:HG21	1:81:A:ILE:HA	6	0.12	0.01	0.12
(1,958)	1:6:A:GLU:H	1:29:A:VAL:HG21	5	0.89	0.47	1.14
(1,958)	1:6:A:GLU:H	1:29:A:VAL:HG23	5	0.89	0.47	1.14
(1,960)	1:5:A:ARG:H	1:5:A:ARG:HB2	4	0.4	0.02	0.4
(1,400)	1:15:A:ALA:HB1	1:18:A:LEU:HG	4	0.26	0.05	0.24
(1,400)	1:15:A:ALA:HB3	1:18:A:LEU:HG	4	0.26	0.05	0.24
(1,400)	1:15:A:ALA:HB2	1:18:A:LEU:HG	4	0.26	0.05	0.24
(1,1310)	1:5:A:ARG:H	1:5:A:ARG:HA	4	0.16	0.01	0.16
(1,995)	1:45:A:TRP:HE3	1:45:A:TRP:HA	4	0.14	0.04	0.12
(1,711)	1:58:A:GLU:H	1:57:A:LYS:HB2	3	0.35	0.13	0.28

Continued on next page...

Continued from previous page...

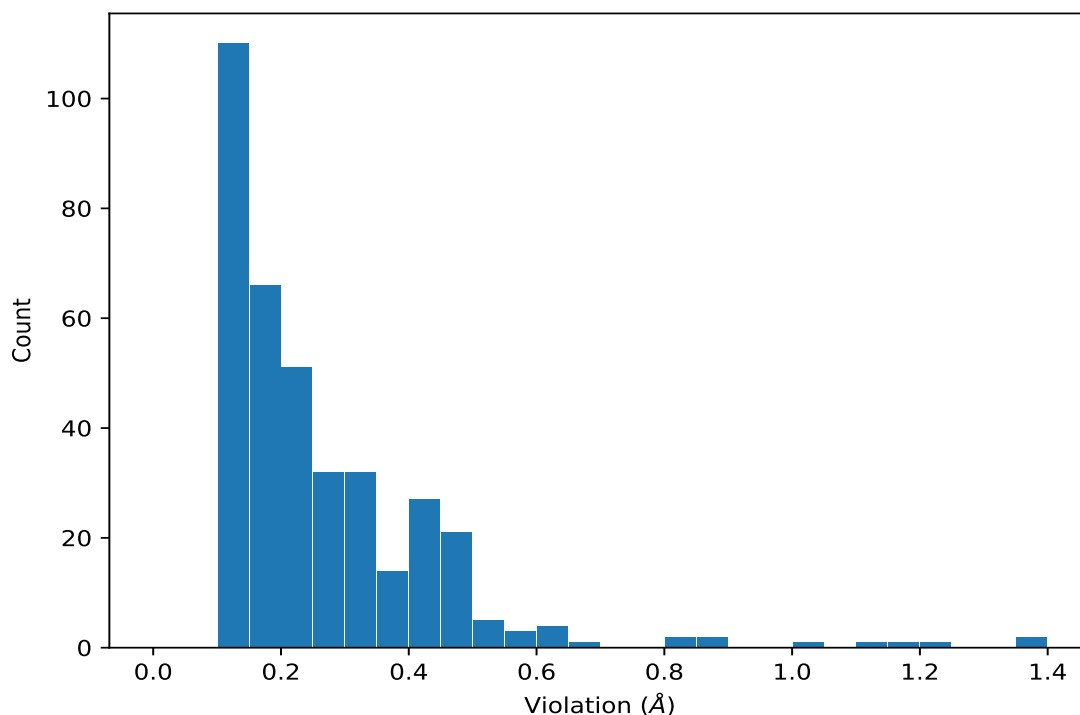
Key	Atom-1	Atom-2	Models <sup>1</sup>	Mean (Å)	SD <sup>1</sup> (Å)	Median (Å)
(1,449)	1:45:A:TRP:H	1:44:A:LYS:HB3	3	0.27	0.04	0.28
(1,1124)	1:80:A:PHE:HZ	1:91:A:THR:HG23	3	0.23	0.05	0.26
(1,1124)	1:80:A:PHE:HZ	1:91:A:THR:HG21	3	0.23	0.05	0.26
(1,1038)	1:63:A:CYS:HA	1:89:A:SER:HA	3	0.22	0.08	0.23
(1,1284)	1:39:A:LYS:H	1:39:A:LYS:HG2	3	0.16	0.06	0.12
(1,1178)	1:72:A:LYS:HD2	1:72:A:LYS:HE3	3	0.11	0.0	0.11
(1,1220)	1:59:A:ALA:HB3	1:58:A:GLU:HG3	2	1.08	0.08	1.08
(1,1220)	1:59:A:ALA:HB2	1:58:A:GLU:HG3	2	1.08	0.08	1.08
(1,1158)	1:4:A:GLU:HA	1:4:A:GLU:HG2	2	0.65	0.01	0.65
(1,1231)	1:20:A:SER:HB3	1:5:A:ARG:HD3	2	0.38	0.06	0.38
(1,1142)	1:58:A:GLU:HA	1:58:A:GLU:HG3	2	0.32	0.01	0.32
(1,1142)	1:58:A:GLU:HA	1:58:A:GLU:HG2	2	0.32	0.01	0.32
(1,889)	1:17:A:GLN:H	1:31:A:HIS:HD2	2	0.32	0.06	0.32
(2,2)	1:63:A:CYS:H	1:68:A:SER:O	2	0.3	0.13	0.3
(1,1227)	1:43:A:GLY:HA3	1:44:A:LYS:HD2	2	0.28	0.04	0.28
(1,453)	1:94:A:ASP:H	1:93:A:HIS:H	2	0.24	0.09	0.24
(1,387)	1:18:A:LEU:HB2	1:29:A:VAL:HB	2	0.22	0.08	0.22
(1,948)	1:8:A:GLU:H	1:7:A:ASP:H	2	0.18	0.06	0.18
(1,1136)	1:76:A:GLU:HA	1:76:A:GLU:HG2	2	0.18	0.0	0.18
(1,401)	1:15:A:ALA:HB2	1:18:A:LEU:HD23	2	0.17	0.03	0.17
(1,401)	1:15:A:ALA:HB2	1:18:A:LEU:HD21	2	0.17	0.03	0.17
(1,1069)	1:74:A:HIS:HD2	1:54:A:VAL:HG13	2	0.15	0.0	0.15
(1,80)	1:54:A:VAL:HB	1:54:A:VAL:HG21	2	0.11	0.0	0.11
(1,80)	1:54:A:VAL:HB	1:54:A:VAL:HG22	2	0.11	0.0	0.11

<sup>1</sup>Number of violated models, <sup>2</sup>Standard deviation

## 9.5 All violated distance restraints [i](#)

### 9.5.1 Histogram : Distribution of distance violations [i](#)

The following histogram shows the distribution of the absolute value of the violation for all violated restraints in the ensemble.



### 9.5.2 Table : All distance violations [i](#)

The following table lists the absolute value of the violation for each restraint in the ensemble sorted by its value. The Key (restraint list ID, restraint ID) is the unique identifier for a given restraint. Rows with same key represent combinatorial or ambiguous restraints and are counted as a single restraint.

Key	Atom-1	Atom-2	Model ID	Violation (Å)
(1,958)	1:6:A:GLU:H	1:29:A:VAL:HG23	5	1.4
(1,1236)	1:7:A:ASP:HB3	1:15:A:ALA:HB1	4	1.39
(1,958)	1:6:A:GLU:H	1:29:A:VAL:HG23	11	1.24
(1,1220)	1:59:A:ALA:HB2	1:58:A:GLU:HG3	7	1.16
(1,958)	1:6:A:GLU:H	1:29:A:VAL:HG21	1	1.14
(1,1220)	1:59:A:ALA:HB3	1:58:A:GLU:HG3	3	1.0
(1,860)	1:29:A:VAL:H	1:29:A:VAL:HG12	4	0.87
(1,389)	1:18:A:LEU:HD22	1:29:A:VAL:HG22	4	0.85
(1,1244)	1:93:A:HIS:HD2	1:92:A:GLU:HB3	1	0.81
(1,1232)	1:5:A:ARG:HD2	1:20:A:SER:HB2	9	0.81
(1,1158)	1:4:A:GLU:HA	1:4:A:GLU:HG2	1	0.66
(1,1158)	1:4:A:GLU:HA	1:4:A:GLU:HG2	2	0.64
(1,1236)	1:7:A:ASP:HB2	1:15:A:ALA:HB2	9	0.63
(1,1211)	1:20:A:SER:HB3	1:5:A:ARG:HB2	11	0.62
(1,376)	1:32:A:ALA:HB1	1:19:A:VAL:HG13	12	0.62
(1,412)	1:41:A:PRO:HD2	1:37:A:LEU:HD22	3	0.59

*Continued on next page...*

*Continued from previous page...*

Key	Atom-1	Atom-2	Model ID	Violation (Å)
(1,957)	1:6:A:GLU:H	1:6:A:GLU:HB2	11	0.58
(1,1298)	1:20:A:SER:H	1:5:A:ARG:HB3	5	0.56
(1,1244)	1:93:A:HIS:HD2	1:92:A:GLU:HB3	6	0.54
(1,711)	1:58:A:GLU:H	1:57:A:LYS:HB2	8	0.53
(1,1215)	1:63:A:CYS:HA	1:61:A:SER:HB2	7	0.51
(1,1215)	1:63:A:CYS:HA	1:61:A:SER:HB2	5	0.5
(1,1215)	1:63:A:CYS:HA	1:61:A:SER:HB2	8	0.5
(1,1023)	1:62:A:PHE:HE2	1:60:A:ALA:HA	11	0.49
(1,1215)	1:63:A:CYS:HA	1:61:A:SER:HB2	3	0.48
(1,1215)	1:63:A:CYS:HA	1:61:A:SER:HB2	13	0.48
(1,1257)	1:87:A:ARG:H	1:87:A:ARG:HB3	9	0.47
(1,1244)	1:93:A:HIS:HD2	1:92:A:GLU:HB3	10	0.47
(1,958)	1:6:A:GLU:H	1:29:A:VAL:HG21	7	0.47
(1,81)	1:54:A:VAL:HG13	1:54:A:VAL:HG21	5	0.47
(1,1215)	1:63:A:CYS:HA	1:61:A:SER:HB2	14	0.46
(1,1023)	1:62:A:PHE:HE2	1:60:A:ALA:HA	4	0.46
(1,81)	1:54:A:VAL:HG13	1:54:A:VAL:HG21	6	0.46
(1,1297)	1:20:A:SER:H	1:5:A:ARG:HD3	9	0.45
(1,1215)	1:63:A:CYS:HA	1:61:A:SER:HB2	6	0.45
(1,1023)	1:62:A:PHE:HE2	1:60:A:ALA:HA	15	0.45
(1,212)	1:37:A:LEU:HD12	1:32:A:ALA:HB1	13	0.45
(1,81)	1:54:A:VAL:HG13	1:54:A:VAL:HG23	2	0.45
(1,81)	1:54:A:VAL:HG12	1:54:A:VAL:HG21	3	0.45
(1,81)	1:54:A:VAL:HG11	1:54:A:VAL:HG23	4	0.45
(1,81)	1:54:A:VAL:HG13	1:54:A:VAL:HG21	9	0.45
(1,81)	1:54:A:VAL:HG13	1:54:A:VAL:HG22	12	0.45
(1,81)	1:54:A:VAL:HG12	1:54:A:VAL:HG22	13	0.45
(1,81)	1:54:A:VAL:HG13	1:54:A:VAL:HG22	14	0.45
(1,1244)	1:93:A:HIS:HD2	1:92:A:GLU:HB3	13	0.44
(1,1236)	1:7:A:ASP:HB2	1:15:A:ALA:HB1	15	0.44
(1,1231)	1:20:A:SER:HB3	1:5:A:ARG:HD3	9	0.44
(1,960)	1:5:A:ARG:H	1:5:A:ARG:HB2	9	0.44
(1,388)	1:29:A:VAL:HB	1:18:A:LEU:HD23	11	0.44
(1,81)	1:54:A:VAL:HG11	1:54:A:VAL:HG22	7	0.44
(1,81)	1:54:A:VAL:HG11	1:54:A:VAL:HG23	8	0.44
(1,81)	1:54:A:VAL:HG11	1:54:A:VAL:HG22	11	0.44
(1,81)	1:54:A:VAL:HG11	1:54:A:VAL:HG21	15	0.44
(2,2)	1:63:A:CYS:H	1:68:A:SER:O	1	0.43
(1,1244)	1:93:A:HIS:HD2	1:92:A:GLU:HB3	4	0.43
(1,1236)	1:7:A:ASP:HB3	1:15:A:ALA:HB2	5	0.43
(1,388)	1:29:A:VAL:HB	1:18:A:LEU:HD22	10	0.43
(1,376)	1:32:A:ALA:HB3	1:19:A:VAL:HG12	7	0.43

*Continued on next page...*

*Continued from previous page...*

Key	Atom-1	Atom-2	Model ID	Violation (Å)
(1,81)	1:54:A:VAL:HG13	1:54:A:VAL:HG21	1	0.43
(1,81)	1:54:A:VAL:HG13	1:54:A:VAL:HG21	10	0.43
(1,1236)	1:7:A:ASP:HB3	1:15:A:ALA:HB3	14	0.42
(1,853)	1:30:A:TYR:H	1:29:A:VAL:HG21	4	0.42
(1,212)	1:37:A:LEU:HD12	1:32:A:ALA:HB3	7	0.42
(1,212)	1:37:A:LEU:HD11	1:32:A:ALA:HB2	14	0.42
(1,1215)	1:63:A:CYS:HA	1:61:A:SER:HB2	12	0.41
(1,1215)	1:63:A:CYS:HA	1:61:A:SER:HB2	4	0.4
(1,960)	1:5:A:ARG:H	1:5:A:ARG:HB2	1	0.4
(1,960)	1:5:A:ARG:H	1:5:A:ARG:HB2	12	0.4
(1,376)	1:32:A:ALA:HB3	1:19:A:VAL:HG13	13	0.4
(1,376)	1:32:A:ALA:HB1	1:19:A:VAL:HG11	14	0.4
(1,72)	1:9:A:CYS:HA	1:29:A:VAL:HG12	4	0.4
(1,1215)	1:63:A:CYS:HA	1:68:A:SER:HB2	15	0.39
(1,1244)	1:93:A:HIS:HD2	1:92:A:GLU:HB3	15	0.38
(1,1215)	1:63:A:CYS:HA	1:61:A:SER:HB2	9	0.38
(1,889)	1:17:A:GLN:H	1:31:A:HIS:HD2	11	0.38
(1,1222)	1:23:A:LYS:HE3	1:23:A:LYS:HG3	14	0.37
(1,960)	1:5:A:ARG:H	1:5:A:ARG:HB2	8	0.37
(1,376)	1:32:A:ALA:HB3	1:19:A:VAL:HG12	9	0.37
(1,1191)	1:37:A:LEU:HD12	1:37:A:LEU:HD21	15	0.36
(1,197)	1:29:A:VAL:HG21	1:29:A:VAL:HG11	4	0.36
(1,1191)	1:37:A:LEU:HD13	1:37:A:LEU:HD23	1	0.35
(1,1191)	1:37:A:LEU:HD12	1:37:A:LEU:HD22	3	0.35
(1,1191)	1:37:A:LEU:HD12	1:37:A:LEU:HD21	5	0.35
(1,1191)	1:37:A:LEU:HD12	1:37:A:LEU:HD22	11	0.35
(1,373)	1:35:A:LEU:HD21	1:45:A:TRP:HZ2	8	0.35
(1,1244)	1:93:A:HIS:HD2	1:92:A:GLU:HB3	14	0.34
(1,1215)	1:63:A:CYS:HA	1:68:A:SER:HB2	10	0.34
(1,1191)	1:37:A:LEU:HD11	1:37:A:LEU:HD23	12	0.34
(1,1023)	1:62:A:PHE:HE2	1:60:A:ALA:HA	1	0.34
(1,400)	1:15:A:ALA:HB2	1:18:A:LEU:HG	10	0.34
(1,388)	1:29:A:VAL:HB	1:18:A:LEU:HD22	6	0.34
(1,376)	1:32:A:ALA:HB3	1:19:A:VAL:HG11	3	0.34
(1,212)	1:37:A:LEU:HD12	1:32:A:ALA:HB2	6	0.34
(1,197)	1:29:A:VAL:HG22	1:29:A:VAL:HG12	6	0.34
(1,1191)	1:37:A:LEU:HD13	1:37:A:LEU:HD21	2	0.33
(1,1142)	1:58:A:GLU:HA	1:58:A:GLU:HG3	3	0.33
(1,453)	1:94:A:ASP:H	1:93:A:HIS:H	13	0.33
(1,1244)	1:93:A:HIS:HD2	1:92:A:GLU:HB3	5	0.32
(1,1244)	1:93:A:HIS:HD2	1:92:A:GLU:HB3	8	0.32
(1,1231)	1:20:A:SER:HB3	1:5:A:ARG:HD3	11	0.32

*Continued on next page...*

*Continued from previous page...*

Key	Atom-1	Atom-2	Model ID	Violation (Å)
(1,1227)	1:43:A:GLY:HA3	1:44:A:LYS:HD2	3	0.32
(1,1191)	1:37:A:LEU:HD13	1:37:A:LEU:HD22	13	0.32
(1,1142)	1:58:A:GLU:HA	1:58:A:GLU:HG2	7	0.32
(1,449)	1:45:A:TRP:H	1:44:A:LYS:HB3	14	0.32
(1,388)	1:29:A:VAL:HB	1:18:A:LEU:HD23	5	0.32
(1,1191)	1:37:A:LEU:HD12	1:19:A:VAL:HG13	6	0.31
(1,1093)	1:45:A:TRP:HH2	1:45:A:TRP:HA	8	0.31
(1,1038)	1:63:A:CYS:HA	1:89:A:SER:HA	1	0.31
(1,1023)	1:62:A:PHE:HE2	1:60:A:ALA:HA	12	0.31
(1,388)	1:29:A:VAL:HB	1:18:A:LEU:HD23	12	0.31
(1,388)	1:29:A:VAL:HB	1:18:A:LEU:HD23	14	0.31
(1,352)	1:59:A:ALA:HB2	1:60:A:ALA:HB2	2	0.31
(1,1244)	1:93:A:HIS:HD2	1:92:A:GLU:HB3	2	0.3
(1,1244)	1:93:A:HIS:HD2	1:92:A:GLU:HB3	7	0.3
(1,387)	1:18:A:LEU:HB2	1:29:A:VAL:HB	4	0.3
(1,197)	1:29:A:VAL:HG22	1:29:A:VAL:HG13	12	0.3
(1,197)	1:29:A:VAL:HG21	1:29:A:VAL:HG11	15	0.3
(1,1023)	1:62:A:PHE:HE2	1:60:A:ALA:HA	13	0.29
(1,388)	1:29:A:VAL:HB	1:18:A:LEU:HD23	9	0.29
(1,388)	1:29:A:VAL:HB	1:18:A:LEU:HD21	13	0.29
(1,376)	1:32:A:ALA:HB1	1:19:A:VAL:HG11	5	0.29
(1,277)	1:89:A:SER:HA	1:88:A:LEU:HB3	10	0.29
(1,1215)	1:63:A:CYS:HA	1:68:A:SER:HB2	11	0.28
(1,711)	1:58:A:GLU:H	1:57:A:LYS:HB2	12	0.28
(1,449)	1:45:A:TRP:H	1:44:A:LYS:HB3	3	0.28
(1,413)	1:41:A:PRO:HD3	1:37:A:LEU:HD22	3	0.28
(1,376)	1:32:A:ALA:HB1	1:19:A:VAL:HG13	4	0.28
(1,197)	1:29:A:VAL:HG23	1:29:A:VAL:HG13	13	0.28
(1,1124)	1:80:A:PHE:HZ	1:91:A:THR:HG21	4	0.27
(1,1023)	1:62:A:PHE:HE2	1:60:A:ALA:HA	9	0.27
(1,400)	1:15:A:ALA:HB1	1:18:A:LEU:HG	1	0.27
(1,277)	1:89:A:SER:HA	1:88:A:LEU:HB3	11	0.27
(1,197)	1:29:A:VAL:HG21	1:29:A:VAL:HG12	2	0.27
(1,197)	1:29:A:VAL:HG21	1:29:A:VAL:HG11	8	0.27
(1,197)	1:29:A:VAL:HG22	1:29:A:VAL:HG12	9	0.27
(1,197)	1:29:A:VAL:HG23	1:29:A:VAL:HG13	10	0.27
(1,1191)	1:37:A:LEU:HD13	1:19:A:VAL:HG13	4	0.26
(1,1191)	1:37:A:LEU:HD11	1:19:A:VAL:HG13	8	0.26
(1,1124)	1:80:A:PHE:HZ	1:91:A:THR:HG23	8	0.26
(1,889)	1:17:A:GLN:H	1:31:A:HIS:HD2	6	0.26
(1,388)	1:29:A:VAL:HB	1:18:A:LEU:HD21	15	0.26
(1,277)	1:89:A:SER:HA	1:88:A:LEU:HB3	7	0.26

*Continued on next page...*

*Continued from previous page...*

Key	Atom-1	Atom-2	Model ID	Violation (Å)
(1,197)	1:29:A:VAL:HG21	1:29:A:VAL:HG13	7	0.26
(1,197)	1:29:A:VAL:HG23	1:29:A:VAL:HG13	11	0.26
(1,1236)	1:7:A:ASP:HB2	1:15:A:ALA:HB3	7	0.25
(1,1236)	1:7:A:ASP:HB3	1:15:A:ALA:HB3	11	0.25
(1,1215)	1:63:A:CYS:HA	1:61:A:SER:HB2	1	0.25
(1,959)	1:6:A:GLU:H	1:29:A:VAL:HG13	4	0.25
(1,197)	1:29:A:VAL:HG22	1:29:A:VAL:HG11	14	0.25
(1,1284)	1:39:A:LYS:H	1:39:A:LYS:HG2	12	0.24
(1,1227)	1:43:A:GLY:HA3	1:44:A:LYS:HD2	14	0.24
(1,1093)	1:45:A:TRP:HH2	1:45:A:TRP:HA	3	0.24
(1,948)	1:8:A:GLU:H	1:7:A:ASP:H	4	0.24
(1,711)	1:58:A:GLU:H	1:57:A:LYS:HB2	5	0.24
(1,388)	1:29:A:VAL:HB	1:18:A:LEU:HD22	2	0.24
(1,352)	1:59:A:ALA:HB1	1:60:A:ALA:HB1	8	0.24
(1,352)	1:59:A:ALA:HB3	1:60:A:ALA:HB2	15	0.24
(1,326)	1:68:A:SER:HB2	1:90:A:CYS:HB2	1	0.24
(1,197)	1:29:A:VAL:HG23	1:29:A:VAL:HG13	1	0.24
(1,1038)	1:63:A:CYS:HA	1:89:A:SER:HA	9	0.23
(1,352)	1:59:A:ALA:HB3	1:60:A:ALA:HB2	5	0.23
(1,352)	1:59:A:ALA:HB1	1:60:A:ALA:HB2	14	0.23
(1,212)	1:37:A:LEU:HD11	1:32:A:ALA:HB1	15	0.23
(1,197)	1:29:A:VAL:HG22	1:29:A:VAL:HG13	3	0.23
(1,1244)	1:93:A:HIS:HD2	1:92:A:GLU:HB3	9	0.22
(1,1236)	1:7:A:ASP:HB2	1:15:A:ALA:HB1	13	0.22
(1,995)	1:45:A:TRP:HE3	1:45:A:TRP:HA	8	0.22
(1,449)	1:45:A:TRP:H	1:44:A:LYS:HB3	7	0.22
(1,400)	1:15:A:ALA:HB3	1:18:A:LEU:HG	2	0.22
(1,388)	1:29:A:VAL:HB	1:18:A:LEU:HD21	3	0.22
(1,352)	1:59:A:ALA:HB3	1:60:A:ALA:HB3	6	0.22
(1,352)	1:59:A:ALA:HB2	1:60:A:ALA:HB2	9	0.22
(1,207)	1:39:A:LYS:HA	1:39:A:LYS:HB2	2	0.22
(1,207)	1:39:A:LYS:HA	1:39:A:LYS:HB2	4	0.22
(1,207)	1:39:A:LYS:HA	1:39:A:LYS:HB2	5	0.22
(1,207)	1:39:A:LYS:HA	1:39:A:LYS:HB2	7	0.22
(1,207)	1:39:A:LYS:HA	1:39:A:LYS:HB2	8	0.22
(1,207)	1:39:A:LYS:HA	1:39:A:LYS:HB2	9	0.22
(1,207)	1:39:A:LYS:HA	1:39:A:LYS:HB2	10	0.22
(1,207)	1:39:A:LYS:HA	1:39:A:LYS:HB2	13	0.22
(1,207)	1:39:A:LYS:HA	1:39:A:LYS:HB2	14	0.22
(1,958)	1:6:A:GLU:H	1:29:A:VAL:HG23	9	0.21
(1,388)	1:29:A:VAL:HB	1:18:A:LEU:HD21	1	0.21
(1,388)	1:29:A:VAL:HB	1:18:A:LEU:HD23	7	0.21

*Continued on next page...*



*Continued from previous page...*

Key	Atom-1	Atom-2	Model ID	Violation (Å)
(1,157)	1:15:A:ALA:HA	1:15:A:ALA:HB3	1	0.21
(1,157)	1:15:A:ALA:HA	1:15:A:ALA:HB3	4	0.21
(1,157)	1:15:A:ALA:HA	1:15:A:ALA:HB2	5	0.21
(1,157)	1:15:A:ALA:HA	1:15:A:ALA:HB3	7	0.21
(1,157)	1:15:A:ALA:HA	1:15:A:ALA:HB2	8	0.21
(1,157)	1:15:A:ALA:HA	1:15:A:ALA:HB2	10	0.21
(1,157)	1:15:A:ALA:HA	1:15:A:ALA:HB2	12	0.21
(1,157)	1:15:A:ALA:HA	1:15:A:ALA:HB1	15	0.21
(1,1244)	1:93:A:HIS:HD2	1:92:A:GLU:HB3	12	0.2
(1,1093)	1:45:A:TRP:HH2	1:45:A:TRP:HA	2	0.2
(1,401)	1:15:A:ALA:HB2	1:18:A:LEU:HD23	10	0.2
(1,400)	1:15:A:ALA:HB2	1:18:A:LEU:HG	5	0.2
(1,157)	1:15:A:ALA:HA	1:15:A:ALA:HB2	2	0.2
(1,157)	1:15:A:ALA:HA	1:15:A:ALA:HB2	9	0.2
(1,157)	1:15:A:ALA:HA	1:15:A:ALA:HB1	11	0.2
(1,157)	1:15:A:ALA:HA	1:15:A:ALA:HB3	14	0.2
(1,1193)	1:37:A:LEU:HD23	1:37:A:LEU:HG	8	0.19
(1,1193)	1:37:A:LEU:HD21	1:37:A:LEU:HG	10	0.19
(1,1093)	1:45:A:TRP:HH2	1:45:A:TRP:HA	1	0.19
(1,1093)	1:45:A:TRP:HH2	1:45:A:TRP:HA	12	0.19
(1,376)	1:32:A:ALA:HB1	1:19:A:VAL:HG12	11	0.19
(1,352)	1:59:A:ALA:HB2	1:60:A:ALA:HB1	4	0.19
(1,352)	1:59:A:ALA:HB2	1:60:A:ALA:HB1	11	0.19
(1,277)	1:89:A:SER:HA	1:88:A:LEU:HB3	15	0.19
(1,201)	1:29:A:VAL:HB	1:29:A:VAL:HG22	4	0.19
(1,197)	1:29:A:VAL:HG22	1:29:A:VAL:HG12	5	0.19
(1,157)	1:15:A:ALA:HA	1:15:A:ALA:HB1	3	0.19
(1,157)	1:15:A:ALA:HA	1:15:A:ALA:HB3	6	0.19
(1,157)	1:15:A:ALA:HA	1:15:A:ALA:HB1	13	0.19
(1,46)	1:73:A:GLN:HA	1:73:A:GLN:HG2	7	0.19
(1,1193)	1:37:A:LEU:HD22	1:37:A:LEU:HG	5	0.18
(1,1193)	1:37:A:LEU:HD23	1:37:A:LEU:HG	9	0.18
(1,1193)	1:37:A:LEU:HD23	1:37:A:LEU:HG	11	0.18
(1,1193)	1:37:A:LEU:HD21	1:37:A:LEU:HG	12	0.18
(1,1193)	1:37:A:LEU:HD23	1:37:A:LEU:HG	14	0.18
(1,1193)	1:37:A:LEU:HD22	1:37:A:LEU:HG	15	0.18
(1,1136)	1:76:A:GLU:HA	1:76:A:GLU:HG2	14	0.18
(1,1093)	1:45:A:TRP:HH2	1:45:A:TRP:HA	4	0.18
(1,135)	1:18:A:LEU:HD23	1:18:A:LEU:HG	1	0.18
(1,135)	1:18:A:LEU:HD21	1:18:A:LEU:HG	2	0.18
(1,135)	1:18:A:LEU:HD21	1:18:A:LEU:HG	9	0.18
(1,135)	1:18:A:LEU:HD22	1:18:A:LEU:HG	11	0.18

*Continued on next page...*



*Continued from previous page...*

Key	Atom-1	Atom-2	Model ID	Violation (Å)
(1,135)	1:18:A:LEU:HD22	1:18:A:LEU:HG	14	0.18
(1,135)	1:18:A:LEU:HD23	1:18:A:LEU:HG	15	0.18
(1,1193)	1:37:A:LEU:HD21	1:37:A:LEU:HG	1	0.17
(1,1193)	1:37:A:LEU:HD22	1:37:A:LEU:HG	2	0.17
(1,1193)	1:37:A:LEU:HD21	1:37:A:LEU:HG	3	0.17
(1,1193)	1:37:A:LEU:HD22	1:37:A:LEU:HG	4	0.17
(1,1193)	1:37:A:LEU:HD22	1:37:A:LEU:HG	6	0.17
(1,1193)	1:37:A:LEU:HD22	1:37:A:LEU:HG	7	0.17
(1,1193)	1:37:A:LEU:HD23	1:37:A:LEU:HG	13	0.17
(1,1136)	1:76:A:GLU:HA	1:76:A:GLU:HG2	8	0.17
(1,352)	1:59:A:ALA:HB3	1:60:A:ALA:HB3	7	0.17
(1,352)	1:59:A:ALA:HB3	1:60:A:ALA:HB2	12	0.17
(1,135)	1:18:A:LEU:HD22	1:18:A:LEU:HG	3	0.17
(1,135)	1:18:A:LEU:HD21	1:18:A:LEU:HG	5	0.17
(1,135)	1:18:A:LEU:HD23	1:18:A:LEU:HG	6	0.17
(1,135)	1:18:A:LEU:HD22	1:18:A:LEU:HG	7	0.17
(1,135)	1:18:A:LEU:HD22	1:18:A:LEU:HG	8	0.17
(1,135)	1:18:A:LEU:HD23	1:18:A:LEU:HG	10	0.17
(1,135)	1:18:A:LEU:HD22	1:18:A:LEU:HG	12	0.17
(1,135)	1:18:A:LEU:HD23	1:18:A:LEU:HG	13	0.17
(2,2)	1:63:A:CYS:H	1:68:A:SER:O	13	0.16
(1,1310)	1:5:A:ARG:H	1:5:A:ARG:HA	2	0.16
(1,1310)	1:5:A:ARG:H	1:5:A:ARG:HA	14	0.16
(1,1191)	1:37:A:LEU:HD11	1:19:A:VAL:HG13	10	0.16
(1,376)	1:32:A:ALA:HB2	1:19:A:VAL:HG13	10	0.16
(1,135)	1:18:A:LEU:HD23	1:18:A:LEU:HG	4	0.16
(1,1310)	1:5:A:ARG:H	1:5:A:ARG:HA	6	0.15
(1,1310)	1:5:A:ARG:H	1:5:A:ARG:HA	15	0.15
(1,1146)	1:38:A:THR:HG23	1:38:A:THR:HB	2	0.15
(1,1146)	1:38:A:THR:HG22	1:38:A:THR:HB	12	0.15
(1,1124)	1:80:A:PHE:HZ	1:91:A:THR:HG23	12	0.15
(1,1069)	1:74:A:HIS:HD2	1:54:A:VAL:HG13	2	0.15
(1,1069)	1:74:A:HIS:HD2	1:54:A:VAL:HG13	12	0.15
(1,453)	1:94:A:ASP:H	1:93:A:HIS:H	7	0.15
(1,388)	1:29:A:VAL:HB	1:18:A:LEU:HD23	8	0.15
(1,352)	1:59:A:ALA:HB2	1:60:A:ALA:HB3	13	0.15
(1,136)	1:18:A:LEU:HD22	1:18:A:LEU:HD12	3	0.15
(1,136)	1:18:A:LEU:HD23	1:18:A:LEU:HD12	4	0.15
(1,136)	1:18:A:LEU:HD21	1:18:A:LEU:HD12	5	0.15
(1,136)	1:18:A:LEU:HD23	1:18:A:LEU:HD11	10	0.15
(1,1146)	1:38:A:THR:HG21	1:38:A:THR:HB	1	0.14
(1,1146)	1:38:A:THR:HG22	1:38:A:THR:HB	4	0.14

*Continued on next page...*

*Continued from previous page...*

Key	Atom-1	Atom-2	Model ID	Violation (Å)
(1,1146)	1:38:A:THR:HG22	1:38:A:THR:HB	8	0.14
(1,1146)	1:38:A:THR:HG23	1:38:A:THR:HB	10	0.14
(1,1146)	1:38:A:THR:HG21	1:38:A:THR:HB	11	0.14
(1,1146)	1:38:A:THR:HG23	1:38:A:THR:HB	15	0.14
(1,1093)	1:45:A:TRP:HH2	1:45:A:TRP:HA	15	0.14
(1,401)	1:15:A:ALA:HB2	1:18:A:LEU:HD21	5	0.14
(1,387)	1:18:A:LEU:HB2	1:29:A:VAL:HB	8	0.14
(1,201)	1:29:A:VAL:HB	1:29:A:VAL:HG23	6	0.14
(1,136)	1:18:A:LEU:HD23	1:18:A:LEU:HD13	6	0.14
(1,120)	1:81:A:ILE:HG21	1:81:A:ILE:HA	12	0.14
(1,1215)	1:63:A:CYS:HA	1:68:A:SER:HB2	2	0.13
(1,1176)	1:72:A:LYS:HG3	1:72:A:LYS:HE3	11	0.13
(1,1146)	1:38:A:THR:HA	1:38:A:THR:HG23	7	0.13
(1,1146)	1:38:A:THR:HG22	1:38:A:THR:HB	14	0.13
(1,1093)	1:45:A:TRP:HH2	1:45:A:TRP:HA	6	0.13
(1,1093)	1:45:A:TRP:HH2	1:45:A:TRP:HA	10	0.13
(1,352)	1:59:A:ALA:HB2	1:60:A:ALA:HB2	3	0.13
(1,277)	1:89:A:SER:HA	1:88:A:LEU:HB3	2	0.13
(1,277)	1:89:A:SER:HA	1:88:A:LEU:HB3	14	0.13
(1,212)	1:37:A:LEU:HD12	1:32:A:ALA:HB1	2	0.13
(1,147)	1:18:A:LEU:HG	1:7:A:ASP:HA	4	0.13
(1,136)	1:18:A:LEU:HD22	1:18:A:LEU:HD11	15	0.13
(1,121)	1:81:A:ILE:HG21	1:81:A:ILE:HB	1	0.13
(1,121)	1:81:A:ILE:HG22	1:81:A:ILE:HB	4	0.13
(1,121)	1:81:A:ILE:HG23	1:81:A:ILE:HB	5	0.13
(1,121)	1:81:A:ILE:HG22	1:81:A:ILE:HB	10	0.13
(1,121)	1:81:A:ILE:HG21	1:81:A:ILE:HB	11	0.13
(1,121)	1:81:A:ILE:HG21	1:81:A:ILE:HB	15	0.13
(1,120)	1:81:A:ILE:HG21	1:81:A:ILE:HA	4	0.13
(1,120)	1:81:A:ILE:HG21	1:81:A:ILE:HA	14	0.13
(1,77)	1:54:A:VAL:HB	1:54:A:VAL:HG11	3	0.13
(1,77)	1:54:A:VAL:HB	1:54:A:VAL:HG13	4	0.13
(1,77)	1:54:A:VAL:HB	1:54:A:VAL:HG12	6	0.13
(1,77)	1:54:A:VAL:HB	1:54:A:VAL:HG12	9	0.13
(1,77)	1:54:A:VAL:HB	1:54:A:VAL:HG11	13	0.13
(1,1284)	1:39:A:LYS:H	1:39:A:LYS:HG2	1	0.12
(1,1284)	1:39:A:LYS:H	1:39:A:LYS:HG2	11	0.12
(1,1146)	1:38:A:THR:HA	1:38:A:THR:HG22	9	0.12
(1,995)	1:45:A:TRP:HE3	1:45:A:TRP:HA	2	0.12
(1,995)	1:45:A:TRP:HE3	1:45:A:TRP:HA	4	0.12
(1,376)	1:32:A:ALA:HB1	1:19:A:VAL:HG13	6	0.12
(1,352)	1:59:A:ALA:HB2	1:60:A:ALA:HB1	1	0.12

*Continued on next page...*

*Continued from previous page...*

Key	Atom-1	Atom-2	Model ID	Violation (Å)
(1,277)	1:89:A:SER:HA	1:88:A:LEU:HB3	9	0.12
(1,277)	1:89:A:SER:HA	1:88:A:LEU:HB3	12	0.12
(1,201)	1:29:A:VAL:HB	1:29:A:VAL:HG22	8	0.12
(1,201)	1:29:A:VAL:HB	1:29:A:VAL:HG23	9	0.12
(1,201)	1:29:A:VAL:HB	1:29:A:VAL:HG21	10	0.12
(1,201)	1:29:A:VAL:HB	1:29:A:VAL:HG21	11	0.12
(1,136)	1:18:A:LEU:HD22	1:18:A:LEU:HD13	1	0.12
(1,136)	1:18:A:LEU:HD21	1:18:A:LEU:HD12	9	0.12
(1,136)	1:18:A:LEU:HD21	1:18:A:LEU:HD12	11	0.12
(1,121)	1:81:A:ILE:HG22	1:81:A:ILE:HB	2	0.12
(1,121)	1:81:A:ILE:HG22	1:81:A:ILE:HB	3	0.12
(1,121)	1:81:A:ILE:HG22	1:81:A:ILE:HB	6	0.12
(1,121)	1:81:A:ILE:HG22	1:81:A:ILE:HB	7	0.12
(1,121)	1:81:A:ILE:HG22	1:81:A:ILE:HB	8	0.12
(1,121)	1:81:A:ILE:HG21	1:81:A:ILE:HB	9	0.12
(1,121)	1:81:A:ILE:HG22	1:81:A:ILE:HB	12	0.12
(1,121)	1:81:A:ILE:HG22	1:81:A:ILE:HB	13	0.12
(1,121)	1:81:A:ILE:HG22	1:81:A:ILE:HB	14	0.12
(1,120)	1:81:A:ILE:HG21	1:81:A:ILE:HA	2	0.12
(1,120)	1:81:A:ILE:HG21	1:81:A:ILE:HA	3	0.12
(1,77)	1:54:A:VAL:HB	1:54:A:VAL:HG12	2	0.12
(1,77)	1:54:A:VAL:HB	1:54:A:VAL:HG12	5	0.12
(1,77)	1:54:A:VAL:HB	1:54:A:VAL:HG13	7	0.12
(1,77)	1:54:A:VAL:HB	1:54:A:VAL:HG13	8	0.12
(1,77)	1:54:A:VAL:HB	1:54:A:VAL:HG12	10	0.12
(1,77)	1:54:A:VAL:HB	1:54:A:VAL:HG13	11	0.12
(1,77)	1:54:A:VAL:HB	1:54:A:VAL:HG12	12	0.12
(1,77)	1:54:A:VAL:HB	1:54:A:VAL:HG12	14	0.12
(1,77)	1:54:A:VAL:HB	1:54:A:VAL:HG13	15	0.12
(2,5)	1:19:A:VAL:H	1:30:A:TYR:O	8	0.11
(1,1320)	1:45:A:TRP:HZ2	1:19:A:VAL:HG12	9	0.11
(1,1180)	1:29:A:VAL:HG11	1:7:A:ASP:HB3	15	0.11
(1,1178)	1:72:A:LYS:HD2	1:72:A:LYS:HE3	1	0.11
(1,1178)	1:72:A:LYS:HD2	1:72:A:LYS:HE3	6	0.11
(1,1178)	1:72:A:LYS:HD2	1:72:A:LYS:HE3	8	0.11
(1,1146)	1:38:A:THR:HA	1:38:A:THR:HG23	6	0.11
(1,1093)	1:45:A:TRP:HH2	1:45:A:TRP:HA	7	0.11
(1,1093)	1:45:A:TRP:HH2	1:45:A:TRP:HA	9	0.11
(1,1093)	1:45:A:TRP:HH2	1:45:A:TRP:HA	13	0.11
(1,1038)	1:63:A:CYS:HA	1:89:A:SER:HA	11	0.11
(1,1003)	1:50:A:HIS:HD2	1:49:A:TRP:HB3	10	0.11
(1,995)	1:45:A:TRP:HE3	1:45:A:TRP:HA	3	0.11

*Continued on next page...*

*Continued from previous page...*

Key	Atom-1	Atom-2	Model ID	Violation (Å)
(1,948)	1:8:A:GLU:H	1:7:A:ASP:H	11	0.11
(1,376)	1:32:A:ALA:HB1	1:19:A:VAL:HG12	1	0.11
(1,277)	1:89:A:SER:HA	1:88:A:LEU:HB3	5	0.11
(1,277)	1:89:A:SER:HA	1:88:A:LEU:HB3	8	0.11
(1,201)	1:29:A:VAL:HB	1:29:A:VAL:HG22	2	0.11
(1,201)	1:29:A:VAL:HB	1:29:A:VAL:HG23	3	0.11
(1,201)	1:29:A:VAL:HB	1:29:A:VAL:HG22	7	0.11
(1,201)	1:29:A:VAL:HB	1:29:A:VAL:HG23	12	0.11
(1,201)	1:29:A:VAL:HB	1:29:A:VAL:HG23	14	0.11
(1,201)	1:29:A:VAL:HB	1:29:A:VAL:HG22	15	0.11
(1,177)	1:84:A:LEU:HD23	1:84:A:LEU:HA	12	0.11
(1,136)	1:18:A:LEU:HD23	1:18:A:LEU:HD11	2	0.11
(1,136)	1:18:A:LEU:HD21	1:18:A:LEU:HD11	7	0.11
(1,136)	1:18:A:LEU:HD21	1:18:A:LEU:HD11	12	0.11
(1,136)	1:18:A:LEU:HD22	1:18:A:LEU:HD11	13	0.11
(1,120)	1:81:A:ILE:HG21	1:81:A:ILE:HA	13	0.11
(1,80)	1:54:A:VAL:HB	1:54:A:VAL:HG22	5	0.11
(1,77)	1:54:A:VAL:HB	1:54:A:VAL:HG12	1	0.11
(1,1146)	1:38:A:THR:HA	1:38:A:THR:HG22	3	0.1
(1,1146)	1:38:A:THR:HA	1:38:A:THR:HG22	13	0.1
(1,1093)	1:45:A:TRP:HH2	1:45:A:TRP:HA	11	0.1
(1,201)	1:29:A:VAL:HB	1:29:A:VAL:HG21	1	0.1
(1,201)	1:29:A:VAL:HB	1:29:A:VAL:HG21	13	0.1
(1,80)	1:54:A:VAL:HB	1:54:A:VAL:HG21	2	0.1

## 10 Dihedral-angle violation analysis [i](#)

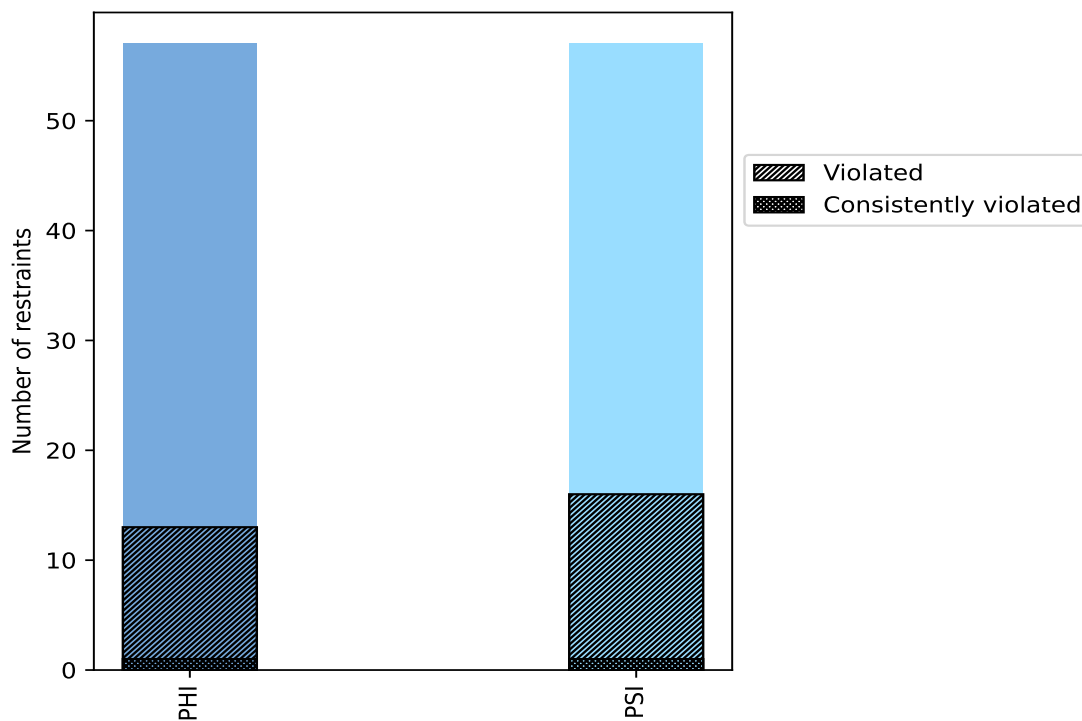
### 10.1 Summary of dihedral-angle violations [i](#)

The following table provides the summary of dihedral-angle violations in different dihedral-angle types. Violations less than 1° are not included in the calculation.

Angle type	Count	% <sup>1</sup>	Violated <sup>3</sup>			Consistently Violated <sup>4</sup>		
			Count	% <sup>2</sup>	% <sup>1</sup>	Count	% <sup>2</sup>	% <sup>1</sup>
PHI	57	50.0	13	22.8	11.4	1	1.8	0.9
PSI	57	50.0	16	28.1	14.0	1	1.8	0.9
Total	114	100.0	29	25.4	25.4	2	1.8	1.8

<sup>1</sup> percentage calculated with respect to total number of dihedral-angle restraints, <sup>2</sup> percentage calculated with respect to number of restraints in a particular dihedral-angle type, <sup>3</sup> violated in at least one model, <sup>4</sup> violated in all the models

#### 10.1.1 Bar chart : Distribution of dihedral-angles and violations [i](#)



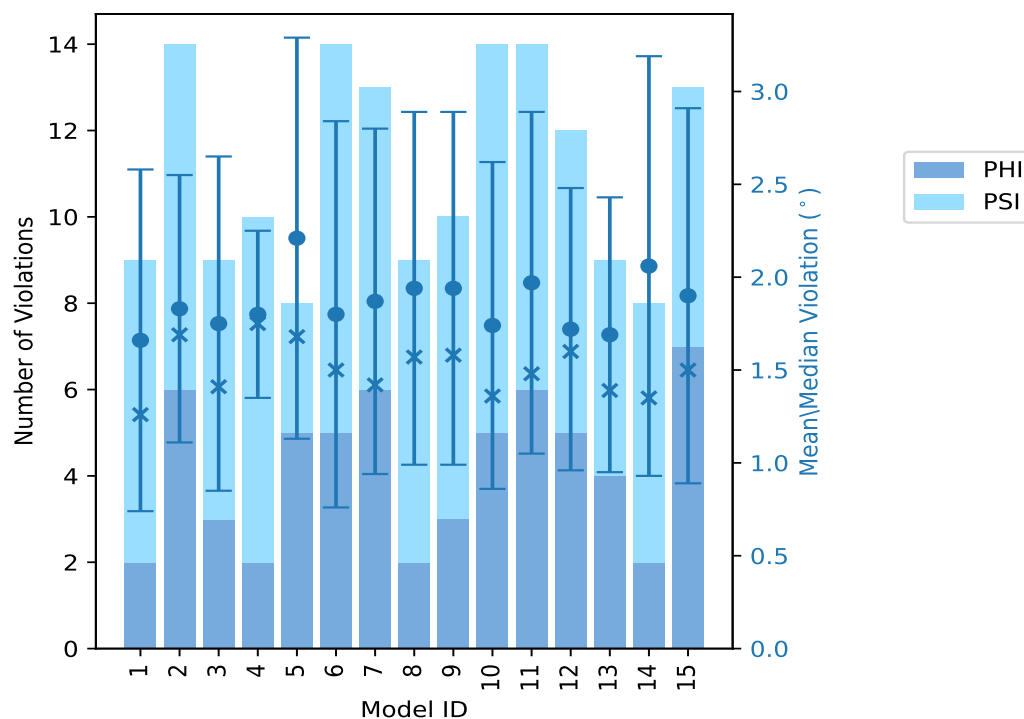
Violated and consistently violated restraints are shown using different hatch patterns in their respective categories

## 10.2 Dihedral-angle violation statistics for each model [i](#)

The following table provides the dihedral-angle violation statistics for each model in the ensemble. Violations less than 1° are not included in the statistics.

Model ID	Number of violations			Mean (°)	Max (°)	SD (°)	Median (°)
	PHI	PSI	Total				
1	2	7	9	1.66	4.18	0.92	1.26
2	6	8	14	1.83	3.79	0.72	1.69
3	3	6	9	1.75	4.06	0.9	1.41
4	2	8	10	1.8	2.47	0.45	1.75
5	5	3	8	2.21	4.28	1.08	1.68
6	5	9	14	1.8	5.25	1.04	1.5
7	6	7	13	1.87	3.84	0.93	1.42
8	2	7	9	1.94	4.16	0.95	1.57
9	3	7	10	1.94	4.05	0.95	1.58
10	5	9	14	1.74	3.85	0.88	1.36
11	6	8	14	1.97	3.88	0.92	1.48
12	5	7	12	1.72	3.84	0.76	1.6
13	4	5	9	1.69	3.37	0.74	1.39
14	2	6	8	2.06	4.38	1.13	1.35
15	7	6	13	1.9	4.31	1.01	1.5

### 10.2.1 Bar graph : Dihedral violation statistics for each model [i](#)



The mean(dot),median(x) and the standard deviation are shown in blue with respect to the y axis on the right

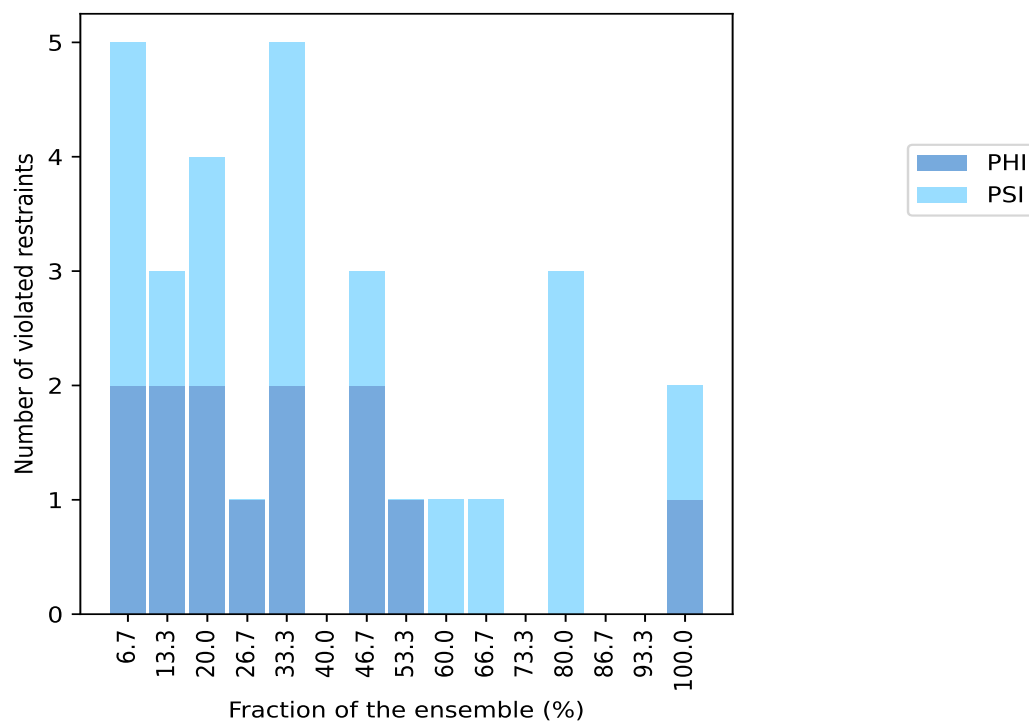
### 10.3 Dihedral-angle violation statistics for the ensemble

Violation analysis may find that some restraints are violated in very few models and some are violated in most of models. The following table provides this information as number of violated restraints for a given fraction of ensemble.

Number of violated restraints			Fraction of the ensemble	
PHI	PSI	Total	Count <sup>1</sup>	%
2	3	5	1	6.7
2	1	3	2	13.3
2	2	4	3	20.0
1	0	1	4	26.7
2	3	5	5	33.3
0	0	0	6	40.0
2	1	3	7	46.7
1	0	1	8	53.3
0	1	1	9	60.0
0	1	1	10	66.7
0	0	0	11	73.3
0	3	3	12	80.0
0	0	0	13	86.7
0	0	0	14	93.3
1	1	2	15	100.0

<sup>1</sup> Number of models with violations

### 10.3.1 Bar graph : Dihedral-angle Violation statistics for the ensemble [i](#)

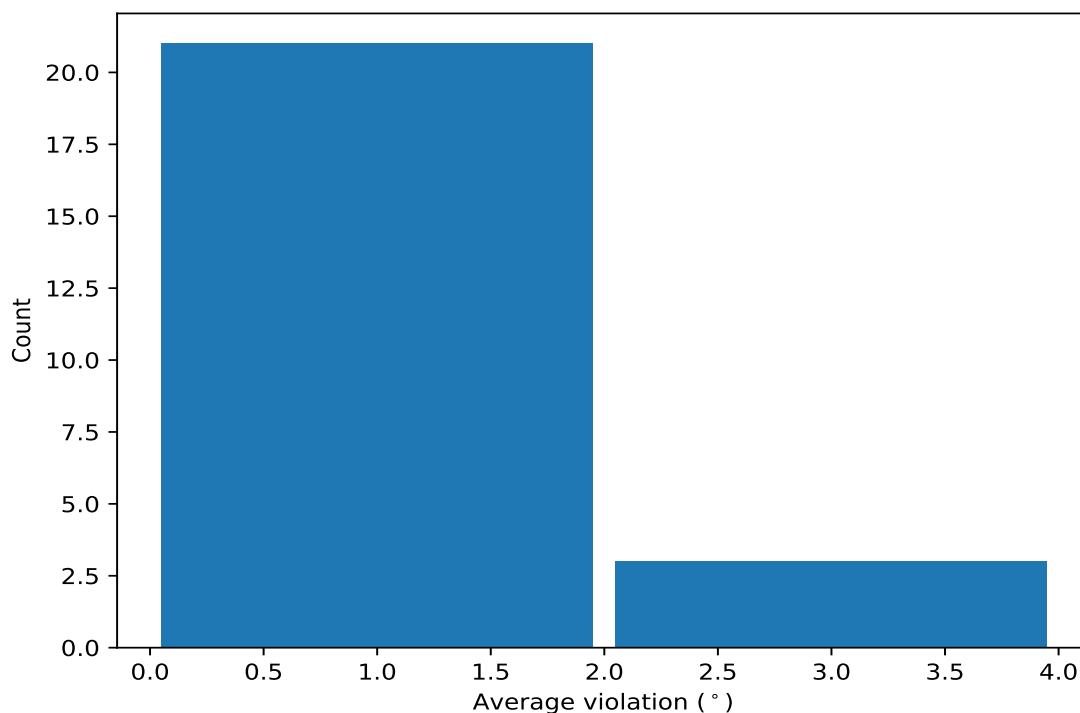


## 10.4 Most violated dihedral-angle restraints in the ensemble [i](#)

### 10.4.1 Histogram : Distribution of mean dihedral-angle violations [i](#)

The following histogram shows the distribution of the average value of the violation. The average is calculated for each restraint that is violated in more than one model over all the violated models in the ensemble





#### 10.4.2 Table: Most violated dihedral-angle restraints [i](#)

The following table provides the mean and the standard deviation of the violation for each restraint sorted by number of violated models and the mean value. The Key (restraint list ID, restraint ID) is the unique identifier for a given restraint.

Key	Atom-1	Atom-2	Atom-3	Atom-4	Models <sup>1</sup>	Mean	SD <sup>2</sup>	Median
(1,2)	1:8:A:GLU:C	1:9:A:CYS:N	1:9:A:CYS:CA	1:9:A:CYS:C	15	3.79	0.81	3.88
(1,103)	1:79:A:LEU:N	1:79:A:LEU:CA	1:79:A:LEU:C	1:80:A:PHE:N	15	3.07	0.74	2.89
(1,64)	1:15:A:ALA:N	1:15:A:ALA:CA	1:15:A:ALA:C	1:16:A:GLY:N	12	1.77	0.39	1.7
(1,74)	1:30:A:TYR:N	1:30:A:TYR:CA	1:30:A:TYR:C	1:31:A:HIS:N	12	1.56	0.34	1.4
(1,112)	1:89:A:SER:N	1:89:A:SER:CA	1:89:A:SER:C	1:90:A:CYS:N	12	1.35	0.23	1.33
(1,71)	1:26:A:CYS:N	1:26:A:CYS:CA	1:26:A:CYS:C	1:27:A:PRO:N	10	2.12	0.68	2.05
(1,75)	1:32:A:ALA:N	1:32:A:ALA:CA	1:32:A:ALA:C	1:33:A:ASP:N	9	1.57	0.45	1.48
(1,47)	1:79:A:LEU:C	1:80:A:PHE:N	1:80:A:PHE:CA	1:80:A:PHE:C	8	1.56	0.35	1.51
(1,19)	1:32:A:ALA:C	1:33:A:ASP:N	1:33:A:ASP:CA	1:33:A:ASP:C	7	1.59	0.43	1.51
(1,4)	1:10:A:PHE:C	1:11:A:SER:N	1:11:A:SER:CA	1:11:A:SER:C	7	1.46	0.16	1.55
(1,101)	1:76:A:GLU:N	1:76:A:GLU:CA	1:76:A:GLU:C	1:77:A:GLY:N	7	1.21	0.17	1.16
(1,44)	1:75:A:ARG:C	1:76:A:GLU:N	1:76:A:GLU:CA	1:76:A:GLU:C	5	1.64	0.51	1.35
(1,85)	1:44:A:LYS:N	1:44:A:LYS:CA	1:44:A:LYS:C	1:45:A:TRP:N	5	1.62	0.43	1.68
(1,66)	1:19:A:VAL:N	1:19:A:VAL:CA	1:19:A:VAL:C	1:20:A:SER:N	5	1.36	0.11	1.39
(1,62)	1:12:A:CYS:N	1:12:A:CYS:CA	1:12:A:CYS:C	1:13:A:GLY:N	5	1.31	0.23	1.29
(1,51)	1:83:A:LYS:C	1:84:A:LEU:N	1:84:A:LEU:CA	1:84:A:LEU:C	5	1.24	0.22	1.1
(1,50)	1:82:A:SER:C	1:83:A:LYS:N	1:83:A:LYS:CA	1:83:A:LYS:C	4	1.32	0.18	1.27
(1,114)	1:93:A:HIS:N	1:93:A:HIS:CA	1:93:A:HIS:C	1:94:A:ASP:N	3	1.31	0.07	1.33
(1,15)	1:27:A:PRO:C	1:28:A:LYS:N	1:28:A:LYS:CA	1:28:A:LYS:C	3	1.24	0.19	1.2
(1,3)	1:9:A:CYS:C	1:10:A:PHE:N	1:10:A:PHE:CA	1:10:A:PHE:C	3	1.21	0.21	1.1
(1,108)	1:84:A:LEU:N	1:84:A:LEU:CA	1:84:A:LEU:C	1:85:A:ASP:N	3	1.17	0.13	1.13

*Continued on next page...*

Continued from previous page...

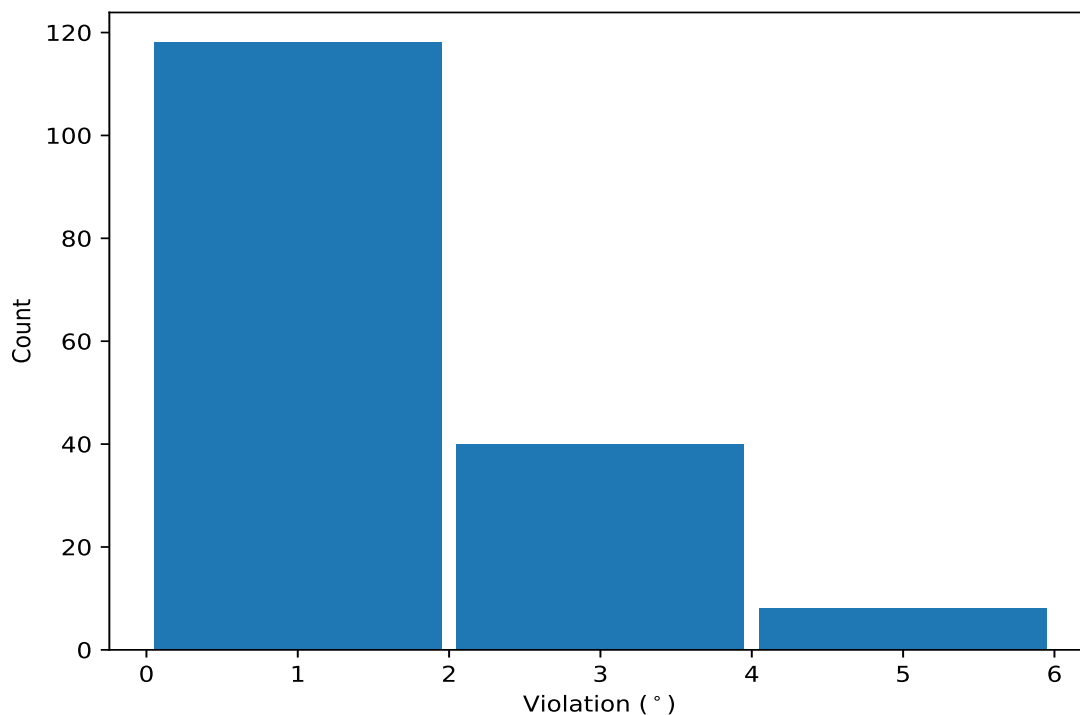
Key	Atom-1	Atom-2	Atom-3	Atom-4	Models <sup>1</sup>	Mean	SD <sup>2</sup>	Median
(1,12)	1:22:A:LYS:C	1:23:A:LYS:N	1:23:A:LYS:CA	1:23:A:LYS:C	2	1.84	0.35	1.84
(1,70)	1:24:A:PRO:N	1:24:A:PRO:CA	1:24:A:PRO:C	1:25:A:GLY:N	2	1.34	0.27	1.34
(1,29)	1:44:A:LYS:C	1:45:A:TRP:N	1:45:A:TRP:CA	1:45:A:TRP:C	2	1.33	0.11	1.33

<sup>1</sup> Number of violated models, <sup>2</sup>Standard deviation, All angle values are in degree (°)

## 10.5 All violated dihedral-angle restraints [i](#)

### 10.5.1 Histogram : Distribution of violations [i](#)

The following histogram shows the distribution of the absolute value of the violation for all violated restraints in the ensemble.



### 10.5.2 Table: All violated dihedral-angle restraints [i](#)

The following table lists the absolute value of the violation for each restraint in the ensemble sorted by its value. The Key (restraint list ID, restraint ID) is the unique identifier for a given restraint.

Key	Atom-1	Atom-2	Atom-3	Atom-4	Model ID	Violation (°)
(1,2)	1:8:A:GLU:C	1:9:A:CYS:N	1:9:A:CYS:CA	1:9:A:CYS:C	6	5.25
(1,103)	1:79:A:LEU:N	1:79:A:LEU:CA	1:79:A:LEU:C	1:80:A:PHE:N	14	4.38
(1,2)	1:8:A:GLU:C	1:9:A:CYS:N	1:9:A:CYS:CA	1:9:A:CYS:C	15	4.31
(1,2)	1:8:A:GLU:C	1:9:A:CYS:N	1:9:A:CYS:CA	1:9:A:CYS:C	5	4.28

Continued on next page...

Continued from previous page...

Key	Atom-1	Atom-2	Atom-3	Atom-4	Model ID	Violation (°)
(1,2)	1:8:A:GLU:C	1:9:A:CYS:N	1:9:A:CYS:CA	1:9:A:CYS:C	1	4.18
(1,2)	1:8:A:GLU:C	1:9:A:CYS:N	1:9:A:CYS:CA	1:9:A:CYS:C	8	4.16
(1,2)	1:8:A:GLU:C	1:9:A:CYS:N	1:9:A:CYS:CA	1:9:A:CYS:C	3	4.06
(1,2)	1:8:A:GLU:C	1:9:A:CYS:N	1:9:A:CYS:CA	1:9:A:CYS:C	9	4.05
(1,2)	1:8:A:GLU:C	1:9:A:CYS:N	1:9:A:CYS:CA	1:9:A:CYS:C	11	3.88
(1,103)	1:79:A:LEU:N	1:79:A:LEU:CA	1:79:A:LEU:C	1:80:A:PHE:N	10	3.85
(1,103)	1:79:A:LEU:N	1:79:A:LEU:CA	1:79:A:LEU:C	1:80:A:PHE:N	7	3.84
(1,2)	1:8:A:GLU:C	1:9:A:CYS:N	1:9:A:CYS:CA	1:9:A:CYS:C	12	3.84
(1,2)	1:8:A:GLU:C	1:9:A:CYS:N	1:9:A:CYS:CA	1:9:A:CYS:C	2	3.79
(1,103)	1:79:A:LEU:N	1:79:A:LEU:CA	1:79:A:LEU:C	1:80:A:PHE:N	15	3.78
(1,103)	1:79:A:LEU:N	1:79:A:LEU:CA	1:79:A:LEU:C	1:80:A:PHE:N	5	3.69
(1,2)	1:8:A:GLU:C	1:9:A:CYS:N	1:9:A:CYS:CA	1:9:A:CYS:C	10	3.68
(1,103)	1:79:A:LEU:N	1:79:A:LEU:CA	1:79:A:LEU:C	1:80:A:PHE:N	11	3.63
(1,2)	1:8:A:GLU:C	1:9:A:CYS:N	1:9:A:CYS:CA	1:9:A:CYS:C	7	3.62
(1,103)	1:79:A:LEU:N	1:79:A:LEU:CA	1:79:A:LEU:C	1:80:A:PHE:N	9	3.49
(1,71)	1:26:A:CYS:N	1:26:A:CYS:CA	1:26:A:CYS:C	1:27:A:PRO:N	11	3.4
(1,2)	1:8:A:GLU:C	1:9:A:CYS:N	1:9:A:CYS:CA	1:9:A:CYS:C	13	3.37
(1,2)	1:8:A:GLU:C	1:9:A:CYS:N	1:9:A:CYS:CA	1:9:A:CYS:C	14	3.01
(1,103)	1:79:A:LEU:N	1:79:A:LEU:CA	1:79:A:LEU:C	1:80:A:PHE:N	8	2.89
(1,71)	1:26:A:CYS:N	1:26:A:CYS:CA	1:26:A:CYS:C	1:27:A:PRO:N	14	2.85
(1,71)	1:26:A:CYS:N	1:26:A:CYS:CA	1:26:A:CYS:C	1:27:A:PRO:N	7	2.76
(1,103)	1:79:A:LEU:N	1:79:A:LEU:CA	1:79:A:LEU:C	1:80:A:PHE:N	2	2.53
(1,103)	1:79:A:LEU:N	1:79:A:LEU:CA	1:79:A:LEU:C	1:80:A:PHE:N	6	2.52
(1,64)	1:15:A:ALA:N	1:15:A:ALA:CA	1:15:A:ALA:C	1:16:A:GLY:N	15	2.52
(1,103)	1:79:A:LEU:N	1:79:A:LEU:CA	1:79:A:LEU:C	1:80:A:PHE:N	12	2.51
(1,103)	1:79:A:LEU:N	1:79:A:LEU:CA	1:79:A:LEU:C	1:80:A:PHE:N	13	2.51
(1,75)	1:32:A:ALA:N	1:32:A:ALA:CA	1:32:A:ALA:C	1:33:A:ASP:N	4	2.47
(1,103)	1:79:A:LEU:N	1:79:A:LEU:CA	1:79:A:LEU:C	1:80:A:PHE:N	3	2.35
(1,19)	1:32:A:ALA:C	1:33:A:ASP:N	1:33:A:ASP:CA	1:33:A:ASP:C	10	2.35
(1,74)	1:30:A:TYR:N	1:30:A:TYR:CA	1:30:A:TYR:C	1:31:A:HIS:N	4	2.3
(1,44)	1:75:A:ARG:C	1:76:A:GLU:N	1:76:A:GLU:CA	1:76:A:GLU:C	5	2.28
(1,64)	1:15:A:ALA:N	1:15:A:ALA:CA	1:15:A:ALA:C	1:16:A:GLY:N	6	2.26
(1,44)	1:75:A:ARG:C	1:76:A:GLU:N	1:76:A:GLU:CA	1:76:A:GLU:C	7	2.23
(1,103)	1:79:A:LEU:N	1:79:A:LEU:CA	1:79:A:LEU:C	1:80:A:PHE:N	4	2.22
(1,71)	1:26:A:CYS:N	1:26:A:CYS:CA	1:26:A:CYS:C	1:27:A:PRO:N	2	2.21
(1,64)	1:15:A:ALA:N	1:15:A:ALA:CA	1:15:A:ALA:C	1:16:A:GLY:N	4	2.19
(1,85)	1:44:A:LYS:N	1:44:A:LYS:CA	1:44:A:LYS:C	1:45:A:TRP:N	2	2.18
(1,71)	1:26:A:CYS:N	1:26:A:CYS:CA	1:26:A:CYS:C	1:27:A:PRO:N	8	2.18
(1,12)	1:22:A:LYS:C	1:23:A:LYS:N	1:23:A:LYS:CA	1:23:A:LYS:C	2	2.18
(1,47)	1:79:A:LEU:C	1:80:A:PHE:N	1:80:A:PHE:CA	1:80:A:PHE:C	2	2.06
(1,19)	1:32:A:ALA:C	1:33:A:ASP:N	1:33:A:ASP:CA	1:33:A:ASP:C	15	2.05
(1,47)	1:79:A:LEU:C	1:80:A:PHE:N	1:80:A:PHE:CA	1:80:A:PHE:C	11	2.03
(1,74)	1:30:A:TYR:N	1:30:A:TYR:CA	1:30:A:TYR:C	1:31:A:HIS:N	11	2.02
(1,64)	1:15:A:ALA:N	1:15:A:ALA:CA	1:15:A:ALA:C	1:16:A:GLY:N	11	2.0
(1,85)	1:44:A:LYS:N	1:44:A:LYS:CA	1:44:A:LYS:C	1:45:A:TRP:N	15	1.98
(1,75)	1:32:A:ALA:N	1:32:A:ALA:CA	1:32:A:ALA:C	1:33:A:ASP:N	2	1.96
(1,75)	1:32:A:ALA:N	1:32:A:ALA:CA	1:32:A:ALA:C	1:33:A:ASP:N	9	1.96
(1,71)	1:26:A:CYS:N	1:26:A:CYS:CA	1:26:A:CYS:C	1:27:A:PRO:N	12	1.92
(1,112)	1:89:A:SER:N	1:89:A:SER:CA	1:89:A:SER:C	1:90:A:CYS:N	4	1.89
(1,74)	1:30:A:TYR:N	1:30:A:TYR:CA	1:30:A:TYR:C	1:31:A:HIS:N	7	1.88
(1,64)	1:15:A:ALA:N	1:15:A:ALA:CA	1:15:A:ALA:C	1:16:A:GLY:N	13	1.88

Continued on next page...

Continued from previous page...

Key	Atom-1	Atom-2	Atom-3	Atom-4	Model ID	Violation (°)
(1,103)	1:79:A:LEU:N	1:79:A:LEU:CA	1:79:A:LEU:C	1:80:A:PHE:N	1	1.85
(1,47)	1:79:A:LEU:C	1:80:A:PHE:N	1:80:A:PHE:CA	1:80:A:PHE:C	5	1.8
(1,71)	1:26:A:CYS:N	1:26:A:CYS:CA	1:26:A:CYS:C	1:27:A:PRO:N	3	1.76
(1,74)	1:30:A:TYR:N	1:30:A:TYR:CA	1:30:A:TYR:C	1:31:A:HIS:N	12	1.74
(1,64)	1:15:A:ALA:N	1:15:A:ALA:CA	1:15:A:ALA:C	1:16:A:GLY:N	8	1.71
(1,64)	1:15:A:ALA:N	1:15:A:ALA:CA	1:15:A:ALA:C	1:16:A:GLY:N	12	1.7
(1,4)	1:10:A:PHE:C	1:11:A:SER:N	1:11:A:SER:CA	1:11:A:SER:C	12	1.7
(1,85)	1:44:A:LYS:N	1:44:A:LYS:CA	1:44:A:LYS:C	1:45:A:TRP:N	9	1.68
(1,51)	1:83:A:LYS:C	1:84:A:LEU:N	1:84:A:LEU:CA	1:84:A:LEU:C	9	1.64
(1,74)	1:30:A:TYR:N	1:30:A:TYR:CA	1:30:A:TYR:C	1:31:A:HIS:N	6	1.62
(1,112)	1:89:A:SER:N	1:89:A:SER:CA	1:89:A:SER:C	1:90:A:CYS:N	1	1.61
(1,70)	1:24:A:PRO:N	1:24:A:PRO:CA	1:24:A:PRO:C	1:25:A:GLY:N	4	1.61
(1,101)	1:76:A:GLU:N	1:76:A:GLU:CA	1:76:A:GLU:C	1:77:A:GLY:N	10	1.6
(1,112)	1:89:A:SER:N	1:89:A:SER:CA	1:89:A:SER:C	1:90:A:CYS:N	6	1.59
(1,62)	1:12:A:CYS:N	1:12:A:CYS:CA	1:12:A:CYS:C	1:13:A:GLY:N	7	1.59
(1,50)	1:82:A:SER:C	1:83:A:LYS:N	1:83:A:LYS:CA	1:83:A:LYS:C	10	1.58
(1,4)	1:10:A:PHE:C	1:11:A:SER:N	1:11:A:SER:CA	1:11:A:SER:C	6	1.58
(1,71)	1:26:A:CYS:N	1:26:A:CYS:CA	1:26:A:CYS:C	1:27:A:PRO:N	15	1.57
(1,62)	1:12:A:CYS:N	1:12:A:CYS:CA	1:12:A:CYS:C	1:13:A:GLY:N	8	1.57
(1,4)	1:10:A:PHE:C	1:11:A:SER:N	1:11:A:SER:CA	1:11:A:SER:C	5	1.56
(1,4)	1:10:A:PHE:C	1:11:A:SER:N	1:11:A:SER:CA	1:11:A:SER:C	11	1.55
(1,19)	1:32:A:ALA:C	1:33:A:ASP:N	1:33:A:ASP:CA	1:33:A:ASP:C	8	1.54
(1,66)	1:19:A:VAL:N	1:19:A:VAL:CA	1:19:A:VAL:C	1:20:A:SER:N	3	1.53
(1,64)	1:15:A:ALA:N	1:15:A:ALA:CA	1:15:A:ALA:C	1:16:A:GLY:N	9	1.53
(1,47)	1:79:A:LEU:C	1:80:A:PHE:N	1:80:A:PHE:CA	1:80:A:PHE:C	10	1.52
(1,19)	1:32:A:ALA:C	1:33:A:ASP:N	1:33:A:ASP:CA	1:33:A:ASP:C	13	1.51
(1,75)	1:32:A:ALA:N	1:32:A:ALA:CA	1:32:A:ALA:C	1:33:A:ASP:N	6	1.5
(1,47)	1:79:A:LEU:C	1:80:A:PHE:N	1:80:A:PHE:CA	1:80:A:PHE:C	15	1.5
(1,3)	1:9:A:CYS:C	1:10:A:PHE:N	1:10:A:PHE:CA	1:10:A:PHE:C	12	1.5
(1,19)	1:32:A:ALA:C	1:33:A:ASP:N	1:33:A:ASP:CA	1:33:A:ASP:C	5	1.49
(1,15)	1:27:A:PRO:C	1:28:A:LYS:N	1:28:A:LYS:CA	1:28:A:LYS:C	6	1.49
(1,12)	1:22:A:LYS:C	1:23:A:LYS:N	1:23:A:LYS:CA	1:23:A:LYS:C	6	1.49
(1,75)	1:32:A:ALA:N	1:32:A:ALA:CA	1:32:A:ALA:C	1:33:A:ASP:N	1	1.48
(1,64)	1:15:A:ALA:N	1:15:A:ALA:CA	1:15:A:ALA:C	1:16:A:GLY:N	5	1.45
(1,29)	1:44:A:LYS:C	1:45:A:TRP:N	1:45:A:TRP:CA	1:45:A:TRP:C	4	1.44
(1,74)	1:30:A:TYR:N	1:30:A:TYR:CA	1:30:A:TYR:C	1:31:A:HIS:N	2	1.43
(1,71)	1:26:A:CYS:N	1:26:A:CYS:CA	1:26:A:CYS:C	1:27:A:PRO:N	6	1.42
(1,66)	1:19:A:VAL:N	1:19:A:VAL:CA	1:19:A:VAL:C	1:20:A:SER:N	7	1.42
(1,112)	1:89:A:SER:N	1:89:A:SER:CA	1:89:A:SER:C	1:90:A:CYS:N	3	1.41
(1,75)	1:32:A:ALA:N	1:32:A:ALA:CA	1:32:A:ALA:C	1:33:A:ASP:N	11	1.4
(1,114)	1:93:A:HIS:N	1:93:A:HIS:CA	1:93:A:HIS:C	1:94:A:ASP:N	11	1.39
(1,66)	1:19:A:VAL:N	1:19:A:VAL:CA	1:19:A:VAL:C	1:20:A:SER:N	13	1.39
(1,50)	1:82:A:SER:C	1:83:A:LYS:N	1:83:A:LYS:CA	1:83:A:LYS:C	11	1.39
(1,74)	1:30:A:TYR:N	1:30:A:TYR:CA	1:30:A:TYR:C	1:31:A:HIS:N	9	1.38
(1,112)	1:89:A:SER:N	1:89:A:SER:CA	1:89:A:SER:C	1:90:A:CYS:N	11	1.36
(1,74)	1:30:A:TYR:N	1:30:A:TYR:CA	1:30:A:TYR:C	1:31:A:HIS:N	10	1.36
(1,74)	1:30:A:TYR:N	1:30:A:TYR:CA	1:30:A:TYR:C	1:31:A:HIS:N	14	1.36
(1,74)	1:30:A:TYR:N	1:30:A:TYR:CA	1:30:A:TYR:C	1:31:A:HIS:N	15	1.36
(1,64)	1:15:A:ALA:N	1:15:A:ALA:CA	1:15:A:ALA:C	1:16:A:GLY:N	2	1.36
(1,64)	1:15:A:ALA:N	1:15:A:ALA:CA	1:15:A:ALA:C	1:16:A:GLY:N	10	1.35
(1,44)	1:75:A:ARG:C	1:76:A:GLU:N	1:76:A:GLU:CA	1:76:A:GLU:C	3	1.35

Continued on next page...

Continued from previous page...

Key	Atom-1	Atom-2	Atom-3	Atom-4	Model ID	Violation (°)
(1,108)	1:84:A:LEU:N	1:84:A:LEU:CA	1:84:A:LEU:C	1:85:A:ASP:N	11	1.34
(1,47)	1:79:A:LEU:C	1:80:A:PHE:N	1:80:A:PHE:CA	1:80:A:PHE:C	14	1.34
(1,114)	1:93:A:HIS:N	1:93:A:HIS:CA	1:93:A:HIS:C	1:94:A:ASP:N	4	1.33
(1,112)	1:89:A:SER:N	1:89:A:SER:CA	1:89:A:SER:C	1:90:A:CYS:N	13	1.33
(1,2)	1:8:A:GLU:C	1:9:A:CYS:N	1:9:A:CYS:CA	1:9:A:CYS:C	4	1.33
(1,112)	1:89:A:SER:N	1:89:A:SER:CA	1:89:A:SER:C	1:90:A:CYS:N	14	1.32
(1,4)	1:10:A:PHE:C	1:11:A:SER:N	1:11:A:SER:CA	1:11:A:SER:C	2	1.32
(1,75)	1:32:A:ALA:N	1:32:A:ALA:CA	1:32:A:ALA:C	1:33:A:ASP:N	7	1.29
(1,62)	1:12:A:CYS:N	1:12:A:CYS:CA	1:12:A:CYS:C	1:13:A:GLY:N	10	1.29
(1,51)	1:83:A:LYS:C	1:84:A:LEU:N	1:84:A:LEU:CA	1:84:A:LEU:C	2	1.29
(1,101)	1:76:A:GLU:N	1:76:A:GLU:CA	1:76:A:GLU:C	1:77:A:GLY:N	12	1.27
(1,44)	1:75:A:ARG:C	1:76:A:GLU:N	1:76:A:GLU:CA	1:76:A:GLU:C	15	1.27
(1,66)	1:19:A:VAL:N	1:19:A:VAL:CA	1:19:A:VAL:C	1:20:A:SER:N	9	1.26
(1,64)	1:15:A:ALA:N	1:15:A:ALA:CA	1:15:A:ALA:C	1:16:A:GLY:N	1	1.26
(1,4)	1:10:A:PHE:C	1:11:A:SER:N	1:11:A:SER:CA	1:11:A:SER:C	7	1.26
(1,4)	1:10:A:PHE:C	1:11:A:SER:N	1:11:A:SER:CA	1:11:A:SER:C	10	1.26
(1,47)	1:79:A:LEU:C	1:80:A:PHE:N	1:80:A:PHE:CA	1:80:A:PHE:C	1	1.25
(1,112)	1:89:A:SER:N	1:89:A:SER:CA	1:89:A:SER:C	1:90:A:CYS:N	12	1.24
(1,114)	1:93:A:HIS:N	1:93:A:HIS:CA	1:93:A:HIS:C	1:94:A:ASP:N	10	1.22
(1,29)	1:44:A:LYS:C	1:45:A:TRP:N	1:45:A:TRP:CA	1:45:A:TRP:C	7	1.22
(1,112)	1:89:A:SER:N	1:89:A:SER:CA	1:89:A:SER:C	1:90:A:CYS:N	2	1.21
(1,66)	1:19:A:VAL:N	1:19:A:VAL:CA	1:19:A:VAL:C	1:20:A:SER:N	6	1.21
(1,15)	1:27:A:PRO:C	1:28:A:LYS:N	1:28:A:LYS:CA	1:28:A:LYS:C	9	1.2
(1,110)	1:87:A:ARG:N	1:87:A:ARG:CA	1:87:A:ARG:C	1:88:A:LEU:N	9	1.19
(1,65)	1:18:A:LEU:N	1:18:A:LEU:CA	1:18:A:LEU:C	1:19:A:VAL:N	4	1.18
(1,112)	1:89:A:SER:N	1:89:A:SER:CA	1:89:A:SER:C	1:90:A:CYS:N	8	1.17
(1,85)	1:44:A:LYS:N	1:44:A:LYS:CA	1:44:A:LYS:C	1:45:A:TRP:N	14	1.17
(1,101)	1:76:A:GLU:N	1:76:A:GLU:CA	1:76:A:GLU:C	1:77:A:GLY:N	6	1.16
(1,101)	1:76:A:GLU:N	1:76:A:GLU:CA	1:76:A:GLU:C	1:77:A:GLY:N	8	1.16
(1,74)	1:30:A:TYR:N	1:30:A:TYR:CA	1:30:A:TYR:C	1:31:A:HIS:N	5	1.16
(1,50)	1:82:A:SER:C	1:83:A:LYS:N	1:83:A:LYS:CA	1:83:A:LYS:C	3	1.16
(1,9)	1:18:A:LEU:C	1:19:A:VAL:N	1:19:A:VAL:CA	1:19:A:VAL:C	15	1.16
(1,108)	1:84:A:LEU:N	1:84:A:LEU:CA	1:84:A:LEU:C	1:85:A:ASP:N	10	1.13
(1,101)	1:76:A:GLU:N	1:76:A:GLU:CA	1:76:A:GLU:C	1:77:A:GLY:N	1	1.13
(1,83)	1:41:A:PRO:N	1:41:A:PRO:CA	1:41:A:PRO:C	1:42:A:ALA:N	1	1.13
(1,50)	1:82:A:SER:C	1:83:A:LYS:N	1:83:A:LYS:CA	1:83:A:LYS:C	12	1.13
(1,74)	1:30:A:TYR:N	1:30:A:TYR:CA	1:30:A:TYR:C	1:31:A:HIS:N	3	1.12
(1,19)	1:32:A:ALA:C	1:33:A:ASP:N	1:33:A:ASP:CA	1:33:A:ASP:C	11	1.11
(1,101)	1:76:A:GLU:N	1:76:A:GLU:CA	1:76:A:GLU:C	1:77:A:GLY:N	13	1.1
(1,51)	1:83:A:LYS:C	1:84:A:LEU:N	1:84:A:LEU:CA	1:84:A:LEU:C	11	1.1
(1,3)	1:9:A:CYS:C	1:10:A:PHE:N	1:10:A:PHE:CA	1:10:A:PHE:C	15	1.1
(1,71)	1:26:A:CYS:N	1:26:A:CYS:CA	1:26:A:CYS:C	1:27:A:PRO:N	1	1.09
(1,51)	1:83:A:LYS:C	1:84:A:LEU:N	1:84:A:LEU:CA	1:84:A:LEU:C	7	1.09
(1,85)	1:44:A:LYS:N	1:44:A:LYS:CA	1:44:A:LYS:C	1:45:A:TRP:N	10	1.08
(1,112)	1:89:A:SER:N	1:89:A:SER:CA	1:89:A:SER:C	1:90:A:CYS:N	10	1.07
(1,75)	1:32:A:ALA:N	1:32:A:ALA:CA	1:32:A:ALA:C	1:33:A:ASP:N	8	1.07
(1,70)	1:24:A:PRO:N	1:24:A:PRO:CA	1:24:A:PRO:C	1:25:A:GLY:N	15	1.07
(1,62)	1:12:A:CYS:N	1:12:A:CYS:CA	1:12:A:CYS:C	1:13:A:GLY:N	14	1.07
(1,44)	1:75:A:ARG:C	1:76:A:GLU:N	1:76:A:GLU:CA	1:76:A:GLU:C	13	1.07
(1,51)	1:83:A:LYS:C	1:84:A:LEU:N	1:84:A:LEU:CA	1:84:A:LEU:C	6	1.06
(1,23)	1:37:A:LEU:C	1:38:A:THR:N	1:38:A:THR:CA	1:38:A:THR:C	15	1.06

Continued on next page...

*Continued from previous page...*

<b>Key</b>	<b>Atom-1</b>	<b>Atom-2</b>	<b>Atom-3</b>	<b>Atom-4</b>	<b>Model ID</b>	<b>Violation (°)</b>
(1,19)	1:32:A:ALA:C	1:33:A:ASP:N	1:33:A:ASP:CA	1:33:A:ASP:C	2	1.06
(1,112)	1:89:A:SER:N	1:89:A:SER:CA	1:89:A:SER:C	1:90:A:CYS:N	7	1.05
(1,62)	1:12:A:CYS:N	1:12:A:CYS:CA	1:12:A:CYS:C	1:13:A:GLY:N	12	1.05
(1,108)	1:84:A:LEU:N	1:84:A:LEU:CA	1:84:A:LEU:C	1:85:A:ASP:N	6	1.04
(1,101)	1:76:A:GLU:N	1:76:A:GLU:CA	1:76:A:GLU:C	1:77:A:GLY:N	2	1.04
(1,15)	1:27:A:PRO:C	1:28:A:LYS:N	1:28:A:LYS:CA	1:28:A:LYS:C	12	1.04
(1,47)	1:79:A:LEU:C	1:80:A:PHE:N	1:80:A:PHE:CA	1:80:A:PHE:C	7	1.02
(1,3)	1:9:A:CYS:C	1:10:A:PHE:N	1:10:A:PHE:CA	1:10:A:PHE:C	13	1.02
(1,75)	1:32:A:ALA:N	1:32:A:ALA:CA	1:32:A:ALA:C	1:33:A:ASP:N	3	1.0