



Full wwPDB X-ray Structure Validation Report ⓘ

Dec 5, 2023 – 03:51 am GMT

PDB ID : 2JGM
Title : Crystal structure of mouse acetylcholinesterase inhibited by aged diisopropyl fluorophosphate (DFP)
Authors : Hornberg, A.; Tunemalm, A.-K.; Ekstrom, F.
Deposited on : 2007-02-13
Resolution : 2.90 Å(reported)

This is a Full wwPDB X-ray Structure Validation Report for a publicly released PDB entry.

We welcome your comments at validation@mail.wwpdb.org

A user guide is available at

<https://www.wwpdb.org/validation/2017/XrayValidationReportHelp>

with specific help available everywhere you see the ⓘ symbol.

The types of validation reports are described at

<http://www.wwpdb.org/validation/2017/FAQs#types>.

The following versions of software and data (see [references ⓘ](#)) were used in the production of this report:

MolProbity : 4.02b-467
Mogul : 1.8.4, CSD as541be (2020)
Xtriage (Phenix) : 1.13
EDS : 2.36
Percentile statistics : 20191225.v01 (using entries in the PDB archive December 25th 2019)
Refmac : 5.8.0158
CCP4 : 7.0.044 (Gargrove)
Ideal geometry (proteins) : Engh & Huber (2001)
Ideal geometry (DNA, RNA) : Parkinson et al. (1996)
Validation Pipeline (wwPDB-VP) : 2.36

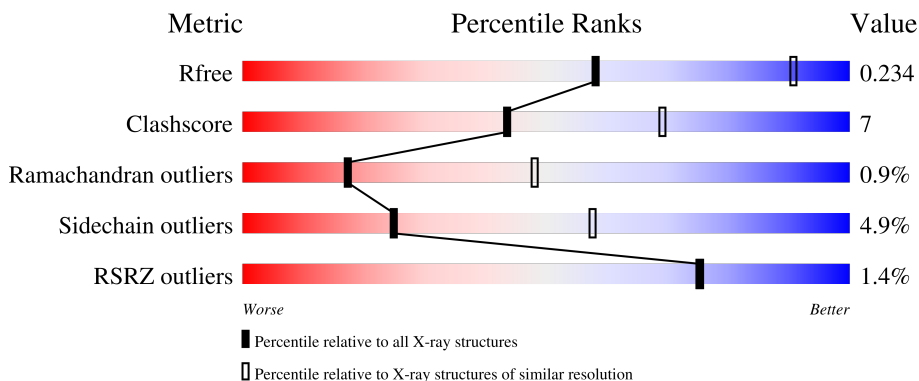
1 Overall quality at a glance

The following experimental techniques were used to determine the structure:

X-RAY DIFFRACTION

The reported resolution of this entry is 2.90 Å.

Percentile scores (ranging between 0-100) for global validation metrics of the entry are shown in the following graphic. The table shows the number of entries on which the scores are based.



Metric	Whole archive (#Entries)	Similar resolution (#Entries, resolution range(Å))
R_{free}	130704	1957 (2.90-2.90)
Clashscore	141614	2172 (2.90-2.90)
Ramachandran outliers	138981	2115 (2.90-2.90)
Sidechain outliers	138945	2117 (2.90-2.90)
RSRZ outliers	127900	1906 (2.90-2.90)

The table below summarises the geometric issues observed across the polymeric chains and their fit to the electron density. The red, orange, yellow and green segments of the lower bar indicate the fraction of residues that contain outliers for ≥ 3 , 2, 1 and 0 types of geometric quality criteria respectively. A grey segment represents the fraction of residues that are not modelled. The numeric value for each fraction is indicated below the corresponding segment, with a dot representing fractions $\leq 5\%$. The upper red bar (where present) indicates the fraction of residues that have poor fit to the electron density. The numeric value is given above the bar.

Mol	Chain	Length	Quality of chain
1	A	548	
1	B	548	

2 Entry composition [i](#)

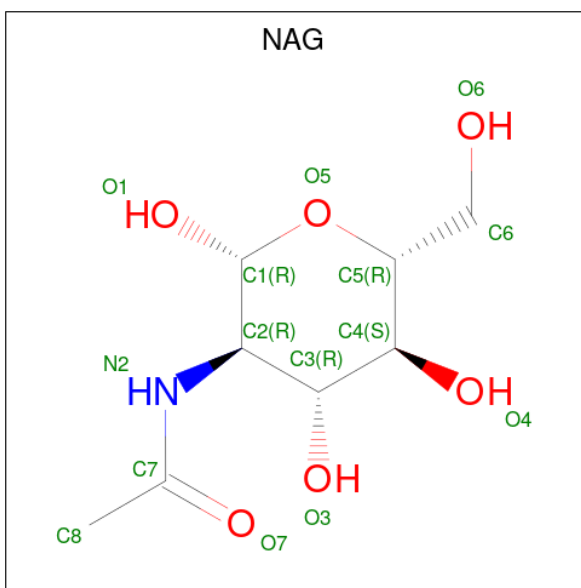
There are 3 unique types of molecules in this entry. The entry contains 8447 atoms, of which 0 are hydrogens and 0 are deuteriums.

In the tables below, the ZeroOcc column contains the number of atoms modelled with zero occupancy, the AltConf column contains the number of residues with at least one atom in alternate conformation and the Trace column contains the number of residues modelled with at most 2 atoms.

- Molecule 1 is a protein called ACETYLCHOLINESTERASE.

Mol	Chain	Residues	Atoms					ZeroOcc	AltConf	Trace	
			Total	C	N	O	P				S
1	A	535	Total	C	N	O	P	S	0	0	0
			4188	2685	726	762	1	14			
1	B	530	Total	C	N	O	P	S	0	0	0
			4153	2666	718	754	1	14			

- Molecule 2 is 2-acetamido-2-deoxy-beta-D-glucopyranose (three-letter code: NAG) (formula: $C_8H_{15}NO_6$).



Mol	Chain	Residues	Atoms				ZeroOcc	AltConf
			Total	C	N	O		
2	A	1	Total	C	N	O	0	0
			14	8	1	5		

- Molecule 3 is water.

Mol	Chain	Residues	Atoms	ZeroOcc	AltConf
3	A	52	Total	0	0
			52		

Continued on next page...

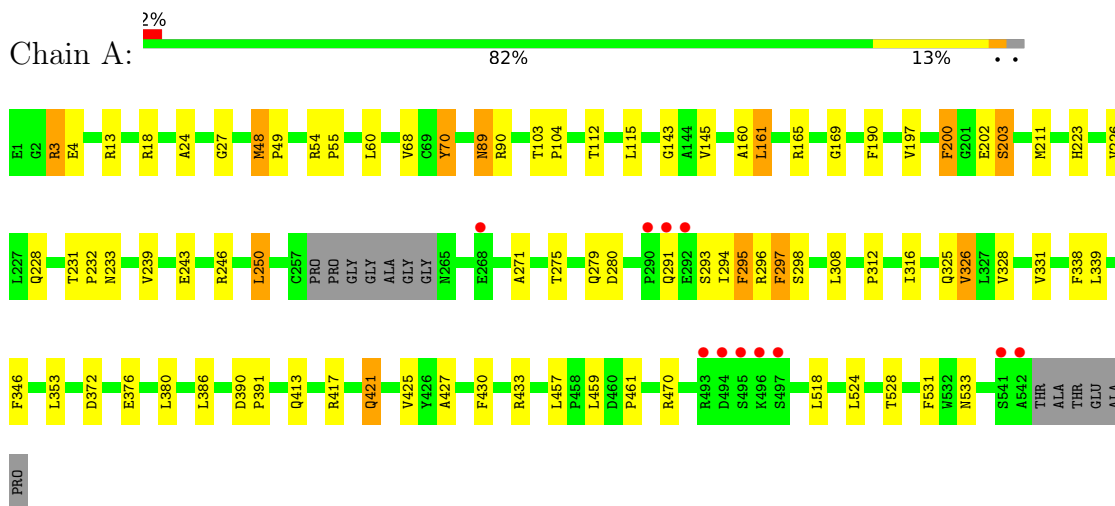
Continued from previous page...

Mol	Chain	Residues	Atoms		ZeroOcc	AltConf
3	B	40	Total	O	0	0
			40	40		

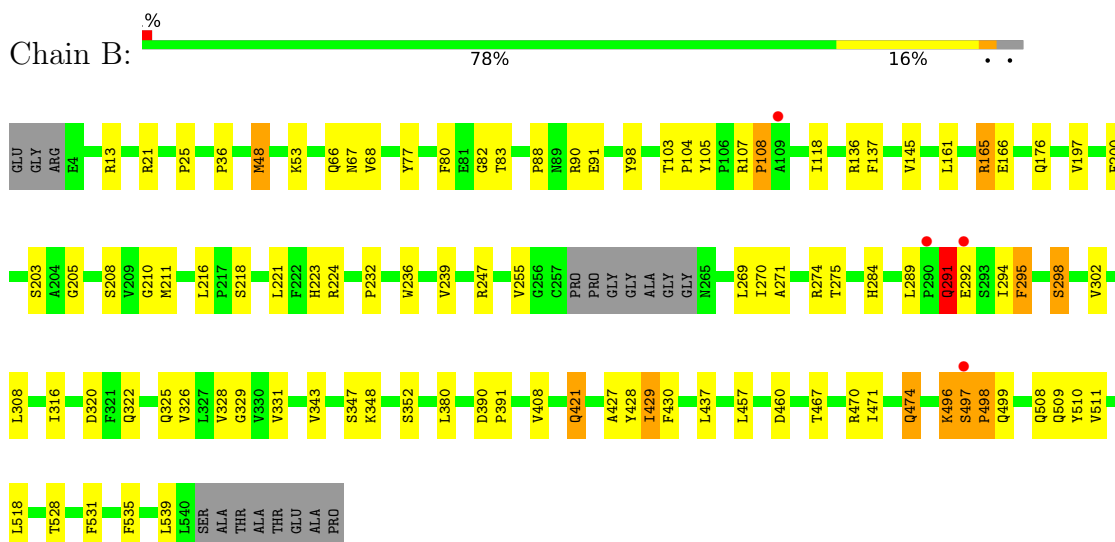
3 Residue-property plots [i](#)

These plots are drawn for all protein, RNA, DNA and oligosaccharide chains in the entry. The first graphic for a chain summarises the proportions of the various outlier classes displayed in the second graphic. The second graphic shows the sequence view annotated by issues in geometry and electron density. Residues are color-coded according to the number of geometric quality criteria for which they contain at least one outlier: green = 0, yellow = 1, orange = 2 and red = 3 or more. A red dot above a residue indicates a poor fit to the electron density ($RSRZ > 2$). Stretches of 2 or more consecutive residues without any outlier are shown as a green connector. Residues present in the sample, but not in the model, are shown in grey.

• Molecule 1: ACETYLCHOLINESTERASE



• Molecule 1: ACETYLCHOLINESTERASE



4 Data and refinement statistics

Property	Value	Source
Space group	P 21 21 21	Depositor
Cell constants a, b, c, α , β , γ	79.42Å 111.30Å 227.10Å 90.00° 90.00° 90.00°	Depositor
Resolution (Å)	19.78 – 2.90 19.78 – 2.90	Depositor EDS
% Data completeness (in resolution range)	100.0 (19.78-2.90) 100.0 (19.78-2.90)	Depositor EDS
R_{merge}	0.09	Depositor
R_{sym}	(Not available)	Depositor
$\langle I/\sigma(I) \rangle$ ¹	4.51 (at 2.88Å)	Xtrriage
Refinement program	REFMAC 5.2.0019	Depositor
R, R_{free}	0.198 , 0.242 0.194 , 0.234	Depositor DCC
R_{free} test set	885 reflections (1.95%)	wwPDB-VP
Wilson B-factor (Å ²)	55.7	Xtrriage
Anisotropy	0.050	Xtrriage
Bulk solvent k_{sol} (e/Å ³), B_{sol} (Å ²)	0.31 , 36.6	EDS
L-test for twinning ²	$\langle L \rangle = 0.48$, $\langle L^2 \rangle = 0.31$	Xtrriage
Estimated twinning fraction	No twinning to report.	Xtrriage
F_o, F_c correlation	0.94	EDS
Total number of atoms	8447	wwPDB-VP
Average B, all atoms (Å ²)	47.0	wwPDB-VP

Xtrriage's analysis on translational NCS is as follows: *The largest off-origin peak in the Patterson function is 2.75% of the height of the origin peak. No significant pseudotranslation is detected.*

¹Intensities estimated from amplitudes.

²Theoretical values of $\langle |L| \rangle$, $\langle L^2 \rangle$ for acentric reflections are 0.5, 0.333 respectively for untwinned datasets, and 0.375, 0.2 for perfectly twinned datasets.

5 Model quality [i](#)

5.1 Standard geometry [i](#)

Bond lengths and bond angles in the following residue types are not validated in this section: NAG, MIS

The Z score for a bond length (or angle) is the number of standard deviations the observed value is removed from the expected value. A bond length (or angle) with $|Z| > 5$ is considered an outlier worth inspection. RMSZ is the root-mean-square of all Z scores of the bond lengths (or angles).

Mol	Chain	Bond lengths		Bond angles	
		RMSZ	# Z >5	RMSZ	# Z >5
1	A	0.55	0/4297	0.67	1/5868 (0.0%)
1	B	0.56	0/4262	0.67	0/5822
All	All	0.56	0/8559	0.67	1/11690 (0.0%)

Chiral center outliers are detected by calculating the chiral volume of a chiral center and verifying if the center is modelled as a planar moiety or with the opposite hand. A planarity outlier is detected by checking planarity of atoms in a peptide group, atoms in a mainchain group or atoms of a sidechain that are expected to be planar.

Mol	Chain	#Chirality outliers	#Planarity outliers
1	B	0	1

There are no bond length outliers.

All (1) bond angle outliers are listed below:

Mol	Chain	Res	Type	Atoms	Z	Observed(°)	Ideal(°)
1	A	161	LEU	CA-CB-CG	-5.12	103.53	115.30

There are no chirality outliers.

All (1) planarity outliers are listed below:

Mol	Chain	Res	Type	Group
1	B	497	SER	Peptide

5.2 Too-close contacts [i](#)

In the following table, the Non-H and H(model) columns list the number of non-hydrogen atoms and hydrogen atoms in the chain respectively. The H(added) column lists the number of hydrogen atoms added and optimized by MolProbity. The Clashes column lists the number of clashes within

the asymmetric unit, whereas Symm-Clashes lists symmetry-related clashes.

Mol	Chain	Non-H	H(model)	H(added)	Clashes	Symm-Clashes
1	A	4188	0	4080	53	0
1	B	4153	0	4046	61	0
2	A	14	0	13	0	0
3	A	52	0	0	0	0
3	B	40	0	0	0	0
All	All	8447	0	8139	111	0

The all-atom clashscore is defined as the number of clashes found per 1000 atoms (including hydrogen atoms). The all-atom clashscore for this structure is 7.

All (111) close contacts within the same asymmetric unit are listed below, sorted by their clash magnitude.

Atom-1	Atom-2	Interatomic distance (Å)	Clash overlap (Å)
1:A:197:VAL:H	1:A:223:HIS:HD2	1.22	0.85
1:A:3:ARG:HH11	1:A:3:ARG:HG3	1.46	0.81
1:A:295:PHE:N	1:A:295:PHE:CD1	2.56	0.73
1:B:197:VAL:H	1:B:223:HIS:CD2	2.06	0.73
1:B:36:PRO:HB2	1:B:53:LYS:HD3	1.71	0.72
1:A:203:MIS:H21	1:A:295:PHE:HE2	1.55	0.71
1:A:295:PHE:N	1:A:295:PHE:HD1	1.88	0.71
1:B:247:ARG:HH11	1:B:298:SER:HA	1.55	0.70
1:A:3:ARG:HH11	1:A:3:ARG:CG	2.04	0.69
1:B:197:VAL:H	1:B:223:HIS:HD2	1.39	0.69
1:A:203:MIS:H21	1:A:295:PHE:CE2	2.27	0.69
1:A:197:VAL:H	1:A:223:HIS:CD2	2.10	0.68
1:B:104:PRO:HG2	1:B:108:PRO:HD3	1.74	0.67
1:A:3:ARG:HG3	1:A:3:ARG:NH1	2.09	0.67
1:B:295:PHE:N	1:B:295:PHE:HD1	1.93	0.65
1:A:380:LEU:HD13	1:B:535:PHE:HB2	1.79	0.63
1:A:295:PHE:HD1	1:A:295:PHE:H	1.46	0.63
1:B:328:VAL:O	1:B:427:ALA:HA	1.99	0.63
1:B:48:MET:HE1	1:B:165:ARG:O	1.99	0.62
1:A:89:ASN:HD22	1:A:89:ASN:H	1.48	0.62
1:B:271:ALA:O	1:B:275:THR:HG23	2.00	0.60
1:A:243:GLU:OE2	1:A:246:ARG:NH1	2.35	0.60
1:B:295:PHE:N	1:B:295:PHE:CD1	2.65	0.60
1:B:511:VAL:HB	1:B:518:LEU:HD22	1.84	0.59
1:B:161:LEU:HD11	1:B:269:LEU:HD22	1.83	0.59
1:B:497:SER:HB3	1:B:499:GLN:HG2	1.84	0.59
1:B:210:GLY:HA3	1:B:232:PRO:HG3	1.85	0.58

Continued on next page...

Continued from previous page...

Atom-1	Atom-2	Interatomic distance (Å)	Clash overlap (Å)
1:B:497:SER:CB	1:B:499:GLN:HG2	2.33	0.58
1:B:165:ARG:HH11	1:B:165:ARG:HB3	1.69	0.57
1:A:294:ILE:HG21	1:A:338:PHE:HB3	1.86	0.57
1:A:211:MET:HG2	1:A:308:LEU:HD21	1.87	0.56
1:B:137:PHE:CE2	1:B:457:LEU:HD23	2.40	0.56
1:A:331:VAL:HG12	1:A:430:PHE:HB3	1.87	0.56
1:A:417:ARG:O	1:A:421:GLN:HG2	2.07	0.55
1:A:103:THR:HG22	1:A:145:VAL:HG13	1.88	0.55
1:A:200:PHE:CB	1:A:226:VAL:HB	2.39	0.53
1:A:386:LEU:HD23	1:B:508:GLN:NE2	2.23	0.53
1:B:66:GLN:HG3	1:B:98:TYR:CG	2.45	0.51
1:B:67:ASN:OD1	1:B:91:GLU:HB2	2.11	0.51
1:A:4:GLU:OE2	1:A:18:ARG:HD3	2.11	0.51
1:A:353:LEU:HB3	1:A:391:PRO:HB2	1.93	0.51
1:A:200:PHE:HB2	1:A:226:VAL:HB	1.93	0.51
1:B:247:ARG:NH1	1:B:298:SER:HA	2.25	0.50
1:A:376:GLU:HA	1:A:376:GLU:OE1	2.10	0.50
1:A:160:ALA:HB2	1:A:169:GLY:HA2	1.93	0.50
1:A:250:LEU:HD12	1:A:250:LEU:O	2.12	0.50
1:B:316:ILE:O	1:B:421:GLN:NE2	2.44	0.50
1:B:118:ILE:HG22	1:B:205:GLY:HA2	1.94	0.49
1:B:331:VAL:HG12	1:B:430:PHE:HB3	1.95	0.49
1:A:68:VAL:HG23	1:A:90:ARG:HB2	1.94	0.49
1:B:166:GLU:HB2	1:B:274:ARG:HH22	1.78	0.48
1:A:328:VAL:O	1:A:427:ALA:HA	2.14	0.48
1:A:48:MET:HE2	1:A:49:PRO:HD2	1.96	0.48
1:B:470:ARG:O	1:B:474:GLN:HG3	2.13	0.48
1:A:70:TYR:HE2	1:A:279:GLN:NE2	2.11	0.47
1:A:211:MET:HG3	1:A:232:PRO:HB3	1.96	0.47
1:B:21:ARG:HD3	1:B:105:TYR:CE1	2.50	0.47
1:B:496:LYS:HE3	1:B:496:LYS:HA	1.96	0.47
1:B:289:LEU:HB3	1:B:291:GLN:HG3	1.97	0.47
1:B:176:GLN:OE1	1:B:208:SER:HB3	2.15	0.47
1:B:329:GLY:HA3	1:B:428:TYR:CE1	2.50	0.47
1:A:89:ASN:HD22	1:A:89:ASN:N	2.13	0.46
1:B:80:PHE:CE2	1:B:82:GLY:HA3	2.50	0.46
1:B:291:GLN:H	1:B:291:GLN:HG2	1.48	0.46
1:B:68:VAL:HG11	1:B:88:PRO:HB3	1.97	0.46
1:A:112:THR:HG21	1:A:143:GLY:O	2.16	0.46
1:B:137:PHE:HE2	1:B:457:LEU:HD23	1.81	0.46
1:B:224:ARG:HG2	1:B:325:GLN:HB2	1.98	0.46

Continued on next page...

Continued from previous page...

Atom-1	Atom-2	Interatomic distance (Å)	Clash overlap (Å)
1:A:271:ALA:O	1:A:275:THR:HG23	2.16	0.45
1:B:320:ASP:OD1	1:B:322:GLN:HG2	2.16	0.45
1:A:380:LEU:CD1	1:B:535:PHE:HB2	2.46	0.45
1:A:24:ALA:HB3	1:A:27:GLY:O	2.17	0.45
1:A:231:THR:HB	1:A:233:ASN:OD1	2.18	0.44
1:A:459:LEU:HD22	1:A:470:ARG:HG2	1.98	0.44
1:A:528:THR:O	1:A:531:PHE:HB3	2.18	0.44
1:B:390:ASP:OD1	1:B:391:PRO:HD2	2.17	0.44
1:B:528:THR:O	1:B:531:PHE:HB3	2.17	0.44
1:A:312:PRO:O	1:A:316:ILE:HG23	2.17	0.44
1:B:68:VAL:HG23	1:B:90:ARG:HB2	1.98	0.44
1:B:239:VAL:HG23	1:B:302:VAL:HG23	1.98	0.43
1:A:202:GLU:HA	1:A:228:GLN:O	2.18	0.43
1:B:326:VAL:HG12	1:B:328:VAL:HG13	2.00	0.43
1:B:329:GLY:HA3	1:B:428:TYR:CZ	2.53	0.43
1:B:236:TRP:HB3	1:B:295:PHE:HD2	1.83	0.43
1:A:103:THR:HG21	1:A:190:PHE:HB3	2.01	0.43
1:B:218:SER:HA	1:B:221:LEU:HD12	2.00	0.43
1:B:429:ILE:HG22	1:B:510:TYR:CD2	2.54	0.43
1:A:203:MIS:H32	1:A:297:PHE:CZ	2.54	0.43
1:A:293:SER:HB3	1:A:296:ARG:HB3	2.01	0.43
1:A:459:LEU:O	1:A:461:PRO:HD3	2.18	0.43
1:A:70:TYR:CE2	1:A:279:GLN:NE2	2.86	0.43
1:B:460:ASP:OD1	1:B:460:ASP:C	2.57	0.43
1:B:470:ARG:O	1:B:474:GLN:CG	2.67	0.42
1:A:390:ASP:HA	1:A:391:PRO:HD3	1.83	0.42
1:A:413:GLN:HB2	1:A:533:ASN:ND2	2.35	0.42
1:A:161:LEU:HD23	1:A:161:LEU:HA	1.98	0.42
1:A:203:MIS:H32	1:A:297:PHE:HZ	1.85	0.42
1:B:255:VAL:HG13	1:B:284:HIS:CD2	2.56	0.41
1:A:339:LEU:HD13	1:A:346:PHE:CE2	2.56	0.41
1:B:107:ARG:HA	1:B:108:PRO:HD2	1.77	0.41
1:B:103:THR:HG22	1:B:145:VAL:HG22	2.03	0.41
1:B:211:MET:HG2	1:B:308:LEU:HD21	2.03	0.41
1:B:471:ILE:HA	1:B:474:GLN:HG3	2.02	0.41
1:B:497:SER:HB3	1:B:498:PRO:C	2.41	0.41
1:A:326:VAL:CG2	1:A:425:VAL:HG22	2.51	0.41
1:B:66:GLN:HG3	1:B:98:TYR:CD1	2.56	0.40
1:A:54:ARG:HA	1:A:55:PRO:HD3	2.00	0.40
1:B:77:TYR:CZ	1:B:348:LYS:HG2	2.56	0.40
1:B:80:PHE:HD2	1:B:83:THR:HG23	1.86	0.40

Continued on next page...

Continued from previous page...

Atom-1	Atom-2	Interatomic distance (Å)	Clash overlap (Å)
1:B:166:GLU:HG2	1:B:270:ILE:CD1	2.51	0.40
1:B:294:ILE:HB	1:B:295:PHE:CD1	2.56	0.40

There are no symmetry-related clashes.

5.3 Torsion angles [i](#)

5.3.1 Protein backbone [i](#)

In the following table, the Percentiles column shows the percent Ramachandran outliers of the chain as a percentile score with respect to all X-ray entries followed by that with respect to entries of similar resolution.

The Analysed column shows the number of residues for which the backbone conformation was analysed, and the total number of residues.

Mol	Chain	Analysed	Favoured	Allowed	Outliers	Percentiles	
1	A	530/548 (97%)	496 (94%)	31 (6%)	3 (1%)	25	58
1	B	525/548 (96%)	498 (95%)	21 (4%)	6 (1%)	14	42
All	All	1055/1096 (96%)	994 (94%)	52 (5%)	9 (1%)	17	48

All (9) Ramachandran outliers are listed below:

Mol	Chain	Res	Type
1	B	498	PRO
1	A	291	GLN
1	B	291	GLN
1	B	292	GLU
1	B	108	PRO
1	A	421	GLN
1	B	539	LEU
1	B	25	PRO
1	A	104	PRO

5.3.2 Protein sidechains [i](#)

In the following table, the Percentiles column shows the percent sidechain outliers of the chain as a percentile score with respect to all X-ray entries followed by that with respect to entries of similar resolution.

The Analysed column shows the number of residues for which the sidechain conformation was analysed, and the total number of residues.

Mol	Chain	Analysed	Rotameric	Outliers	Percentiles	
1	A	439/445 (99%)	417 (95%)	22 (5%)	24	57
1	B	436/445 (98%)	415 (95%)	21 (5%)	25	58
All	All	875/890 (98%)	832 (95%)	43 (5%)	25	57

All (43) residues with a non-rotameric sidechain are listed below:

Mol	Chain	Res	Type
1	A	3	ARG
1	A	13	ARG
1	A	48	MET
1	A	60	LEU
1	A	70	TYR
1	A	89	ASN
1	A	115	LEU
1	A	165	ARG
1	A	200	PHE
1	A	239	VAL
1	A	250	LEU
1	A	280	ASP
1	A	295	PHE
1	A	297	PHE
1	A	298	SER
1	A	325	GLN
1	A	326	VAL
1	A	372	ASP
1	A	433	ARG
1	A	457	LEU
1	A	518	LEU
1	A	524	LEU
1	B	13	ARG
1	B	48	MET
1	B	136	ARG
1	B	165	ARG
1	B	200	PHE
1	B	216	LEU
1	B	291	GLN
1	B	295	PHE
1	B	298	SER
1	B	343	VAL
1	B	347	SER

Continued on next page...

Continued from previous page...

Mol	Chain	Res	Type
1	B	352	SER
1	B	380	LEU
1	B	408	VAL
1	B	421	GLN
1	B	429	ILE
1	B	437	LEU
1	B	467	THR
1	B	474	GLN
1	B	496	LYS
1	B	509	GLN

Sometimes sidechains can be flipped to improve hydrogen bonding and reduce clashes. All (7) such sidechains are listed below:

Mol	Chain	Res	Type
1	A	89	ASN
1	A	223	HIS
1	A	279	GLN
1	B	223	HIS
1	B	265	ASN
1	B	284	HIS
1	B	508	GLN

5.3.3 RNA [i](#)

There are no RNA molecules in this entry.

5.4 Non-standard residues in protein, DNA, RNA chains [i](#)

2 non-standard protein/DNA/RNA residues are modelled in this entry.

In the following table, the Counts columns list the number of bonds (or angles) for which Mogul statistics could be retrieved, the number of bonds (or angles) that are observed in the model and the number of bonds (or angles) that are defined in the Chemical Component Dictionary. The Link column lists molecule types, if any, to which the group is linked. The Z score for a bond length (or angle) is the number of standard deviations the observed value is removed from the expected value. A bond length (or angle) with $|Z| > 2$ is considered an outlier worth inspection. RMSZ is the root-mean-square of all Z scores of the bond lengths (or angles).

Mol	Type	Chain	Res	Link	Bond lengths			Bond angles		
					Counts	RMSZ	$\# Z > 2$	Counts	RMSZ	$\# Z > 2$
1	MIS	B	203	1	11,12,13	0.69	0	10,16,18	2.13	4 (40%)

Mol	Type	Chain	Res	Link	Bond lengths			Bond angles		
					Counts	RMSZ	# Z > 2	Counts	RMSZ	# Z > 2
1	MIS	A	203	1	11,12,13	0.68	0	10,16,18	1.30	1 (10%)

In the following table, the Chirals column lists the number of chiral outliers, the number of chiral centers analysed, the number of these observed in the model and the number defined in the Chemical Component Dictionary. Similar counts are reported in the Torsion and Rings columns. '-' means no outliers of that kind were identified.

Mol	Type	Chain	Res	Link	Chirals	Torsions	Rings
1	MIS	B	203	1	-	5/10/13/15	-
1	MIS	A	203	1	-	4/10/13/15	-

There are no bond length outliers.

All (5) bond angle outliers are listed below:

Mol	Chain	Res	Type	Atoms	Z	Observed(°)	Ideal(°)
1	B	203	MIS	OG-CB-CA	3.68	111.73	108.14
1	B	203	MIS	O1P-P-OG	-3.64	90.86	107.75
1	B	203	MIS	OG-P-O2P	2.78	119.94	109.07
1	A	203	MIS	P-OG-CB	-2.46	107.26	121.68
1	B	203	MIS	O3P-C1-C2	2.30	115.75	107.69

There are no chirality outliers.

All (9) torsion outliers are listed below:

Mol	Chain	Res	Type	Atoms
1	A	203	MIS	CB-OG-P-O3P
1	B	203	MIS	CB-OG-P-O3P
1	B	203	MIS	C2-C1-O3P-P
1	A	203	MIS	C1-O3P-P-OG
1	A	203	MIS	CB-OG-P-O2P
1	A	203	MIS	N-CA-CB-OG
1	B	203	MIS	N-CA-CB-OG
1	B	203	MIS	C1-O3P-P-OG
1	B	203	MIS	CB-OG-P-O2P

There are no ring outliers.

1 monomer is involved in 4 short contacts:

Mol	Chain	Res	Type	Clashes	Symm-Clashes
1	A	203	MIS	4	0

5.5 Carbohydrates [i](#)

There are no monosaccharides in this entry.

5.6 Ligand geometry [i](#)

1 ligand is modelled in this entry.

In the following table, the Counts columns list the number of bonds (or angles) for which Mogul statistics could be retrieved, the number of bonds (or angles) that are observed in the model and the number of bonds (or angles) that are defined in the Chemical Component Dictionary. The Link column lists molecule types, if any, to which the group is linked. The Z score for a bond length (or angle) is the number of standard deviations the observed value is removed from the expected value. A bond length (or angle) with $|Z| > 2$ is considered an outlier worth inspection. RMSZ is the root-mean-square of all Z scores of the bond lengths (or angles).

Mol	Type	Chain	Res	Link	Bond lengths			Bond angles		
					Counts	RMSZ	# Z > 2	Counts	RMSZ	# Z > 2
2	NAG	A	1543	1	14,14,15	0.72	0	17,19,21	1.49	3 (17%)

In the following table, the Chirals column lists the number of chiral outliers, the number of chiral centers analysed, the number of these observed in the model and the number defined in the Chemical Component Dictionary. Similar counts are reported in the Torsion and Rings columns. '-' means no outliers of that kind were identified.

Mol	Type	Chain	Res	Link	Chirals	Torsions	Rings
2	NAG	A	1543	1	-	2/6/23/26	0/1/1/1

There are no bond length outliers.

All (3) bond angle outliers are listed below:

Mol	Chain	Res	Type	Atoms	Z	Observed(°)	Ideal(°)
2	A	1543	NAG	O5-C5-C6	4.11	113.65	107.20
2	A	1543	NAG	C1-O5-C5	2.50	115.57	112.19
2	A	1543	NAG	C3-C4-C5	-2.17	106.38	110.24

There are no chirality outliers.

All (2) torsion outliers are listed below:

Mol	Chain	Res	Type	Atoms
2	A	1543	NAG	C8-C7-N2-C2
2	A	1543	NAG	O7-C7-N2-C2

There are no ring outliers.

No monomer is involved in short contacts.

5.7 Other polymers

There are no such residues in this entry.

5.8 Polymer linkage issues

There are no chain breaks in this entry.

6 Fit of model and data [i](#)

6.1 Protein, DNA and RNA chains [i](#)

In the following table, the column labelled ‘#RSRZ > 2’ contains the number (and percentage) of RSRZ outliers, followed by percent RSRZ outliers for the chain as percentile scores relative to all X-ray entries and entries of similar resolution. The OWAB column contains the minimum, median, 95th percentile and maximum values of the occupancy-weighted average B-factor per residue. The column labelled ‘Q < 0.9’ lists the number of (and percentage) of residues with an average occupancy less than 0.9.

Mol	Chain	Analysed	<RSRZ>	#RSRZ>2	OWAB(Å ²)	Q<0.9
1	A	534/548 (97%)	-0.46	11 (2%) 63 61	27, 44, 67, 88	0
1	B	529/548 (96%)	-0.45	4 (0%) 86 86	29, 46, 70, 94	0
All	All	1063/1096 (96%)	-0.46	15 (1%) 75 75	27, 45, 69, 94	0

All (15) RSRZ outliers are listed below:

Mol	Chain	Res	Type	RSRZ
1	A	496	LYS	4.3
1	A	542	ALA	3.9
1	B	292	GLU	3.8
1	A	493	ARG	3.6
1	B	497	SER	3.4
1	A	495	SER	2.9
1	A	497	SER	2.9
1	A	292	GLU	2.9
1	B	109	ALA	2.8
1	A	494	ASP	2.7
1	A	541	SER	2.6
1	A	291	GLN	2.4
1	A	290	PRO	2.1
1	A	268	GLU	2.1
1	B	290	PRO	2.0

6.2 Non-standard residues in protein, DNA, RNA chains [i](#)

In the following table, the Atoms column lists the number of modelled atoms in the group and the number defined in the chemical component dictionary. The B-factors column lists the minimum, median, 95th percentile and maximum values of B factors of atoms in the group. The column labelled ‘Q < 0.9’ lists the number of atoms with occupancy less than 0.9.

Mol	Type	Chain	Res	Atoms	RSCC	RSR	B-factors(\AA^2)	Q<0.9
1	MIS	B	203	13/14	0.97	0.11	35,39,56,56	0
1	MIS	A	203	13/14	0.98	0.13	32,36,51,51	0

6.3 Carbohydrates [i](#)

There are no monosaccharides in this entry.

6.4 Ligands [i](#)

In the following table, the Atoms column lists the number of modelled atoms in the group and the number defined in the chemical component dictionary. The B-factors column lists the minimum, median, 95th percentile and maximum values of B factors of atoms in the group. The column labelled 'Q< 0.9' lists the number of atoms with occupancy less than 0.9.

Mol	Type	Chain	Res	Atoms	RSCC	RSR	B-factors(\AA^2)	Q<0.9
2	NAG	A	1543	14/15	0.90	0.51	74,79,83,83	0

6.5 Other polymers [i](#)

There are no such residues in this entry.