



Full wwPDB X-ray Structure Validation Report ⓘ

Nov 12, 2024 – 07:08 AM EST

PDB ID : 2IEI
Title : Crystal structure of rabbit muscle glycogen phosphorylase in complex with 3, 4-dihydro-2-quinolone
Authors : Birch, A.M.; Kenny, P.W.; Oikonomakos, N.G.; Otterbein, L.; Schofield, P.; Whittamore, P.R.O.; Whalley, D.P.; Rowsell, S.; Pauptit, R.; Pannifer, A.; Breed, J.; Minshull, C.
Deposited on : 2006-09-19
Resolution : 1.91 Å(reported)

This is a Full wwPDB X-ray Structure Validation Report for a publicly released PDB entry.

We welcome your comments at validation@mail.wwpdb.org

A user guide is available at

<https://www.wwpdb.org/validation/2017/XrayValidationReportHelp>

with specific help available everywhere you see the ⓘ symbol.

The types of validation reports are described at

<http://www.wwpdb.org/validation/2017/FAQs#types>.

The following versions of software and data (see [references](#) ①) were used in the production of this report:

MolProbity : 4.02b-467
Mogul : 2022.3.0, CSD as543be (2022)
Xtrriage (Phenix) : 1.20.1
EDS : 3.0
buster-report : 1.1.7 (2018)
Percentile statistics : 20231227.v01 (using entries in the PDB archive December 27th 2023)
CCP4 : 9.0.003 (Gargrove)
Density-Fitness : 1.0.11
Ideal geometry (proteins) : Engh & Huber (2001)
Ideal geometry (DNA, RNA) : Parkinson et al. (1996)
Validation Pipeline (wwPDB-VP) : 2.39

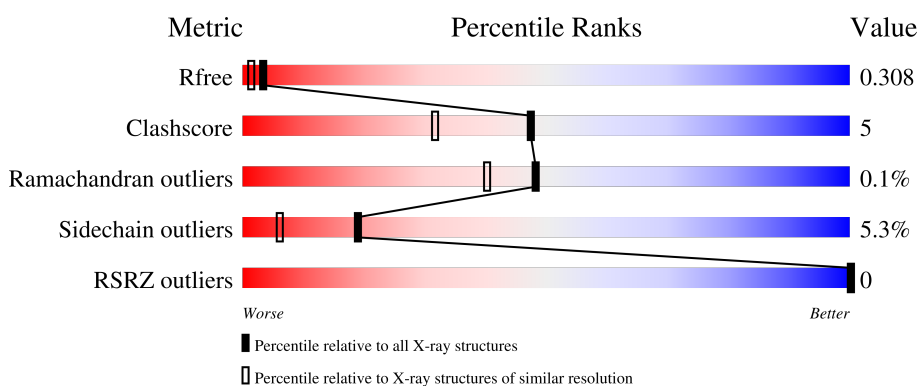
1 Overall quality at a glance

The following experimental techniques were used to determine the structure:

X-RAY DIFFRACTION

The reported resolution of this entry is 1.91 Å.

Percentile scores (ranging between 0-100) for global validation metrics of the entry are shown in the following graphic. The table shows the number of entries on which the scores are based.



Metric	Whole archive (#Entries)	Similar resolution (#Entries, resolution range(Å))
R_{free}	164625	1028 (1.92-1.92)
Clashscore	180529	1100 (1.92-1.92)
Ramachandran outliers	177936	1087 (1.92-1.92)
Sidechain outliers	177891	1087 (1.92-1.92)
RSRZ outliers	164620	1028 (1.92-1.92)

The table below summarises the geometric issues observed across the polymeric chains and their fit to the electron density. The red, orange, yellow and green segments of the lower bar indicate the fraction of residues that contain outliers for ≥ 3 , 2, 1 and 0 types of geometric quality criteria respectively. A grey segment represents the fraction of residues that are not modelled. The numeric value for each fraction is indicated below the corresponding segment, with a dot representing fractions $\leq 5\%$. The upper red bar (where present) indicates the fraction of residues that have poor fit to the electron density. The numeric value is given above the bar.

Mol	Chain	Length	Quality of chain
1	A	842	80% 13% • 6%
1	B	842	81% 12% • 5%

The following table lists non-polymeric compounds, carbohydrate monomers and non-standard residues in protein, DNA, RNA chains that are outliers for geometric or electron-density-fit criteria:

Mol	Type	Chain	Res	Chirality	Geometry	Clashes	Electron density
2	PLR	A	901	-	-	X	-
2	PLR	B	902	-	-	X	-

2 Entry composition [i](#)

There are 4 unique types of molecules in this entry. The entry contains 13536 atoms, of which 0 are hydrogens and 0 are deuteriums.

In the tables below, the ZeroOcc column contains the number of atoms modelled with zero occupancy, the AltConf column contains the number of residues with at least one atom in alternate conformation and the Trace column contains the number of residues modelled with at most 2 atoms.

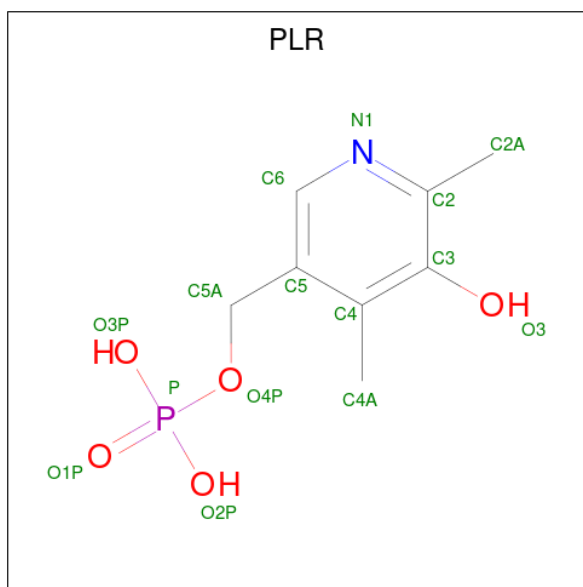
- Molecule 1 is a protein called Glycogen phosphorylase, muscle form.

Mol	Chain	Residues	Atoms					ZeroOcc	AltConf	Trace
			Total	C	N	O	S			
1	A	794	Total 6416	C 4102	N 1124	O 1161	S 29	0	0	0
1	B	796	Total 6413	C 4094	N 1119	O 1171	S 29	0	0	0

There are 2 discrepancies between the modelled and reference sequences:

Chain	Residue	Modelled	Actual	Comment	Reference
A	380	ILE	LEU	conflict	UNP P00489
B	380	ILE	LEU	conflict	UNP P00489

- Molecule 2 is (5-HYDROXY-4,6-DIMETHYLPYRIDIN-3-YL)METHYL DIHYDROGEN PHOSPHATE (three-letter code: PLR) (formula: C₈H₁₂NO₅P).



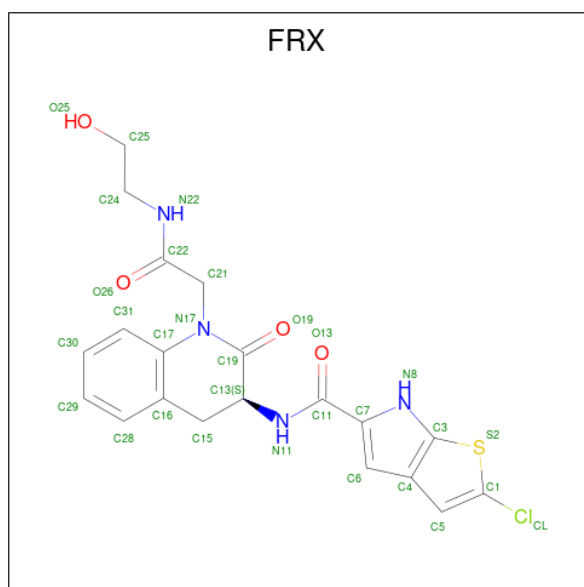
Mol	Chain	Residues	Atoms					ZeroOcc	AltConf
			Total	C	N	O	P		
2	A	1	Total 15	C 8	N 1	O 5	P 1	0	0

Continued on next page...

Continued from previous page...

Mol	Chain	Residues	Atoms					ZeroOcc	AltConf
			Total	C	N	O	P		
2	B	1	15	8	1	5	1	0	0

- Molecule 3 is (S)-2-CHLORO-N-(1-(2-(2-HYDROXYETHYLAMINO)-2-OXOETHYL)-2-OXO-1,2,3,4-TETRAHYDROQUINOLIN-3-YL)-6H-THIENO[2,3-B]PYRROLE-5-CARBOXAMIDE (three-letter code: FRX) (formula: C₂₀H₁₉ClN₄O₄S).



Mol	Chain	Residues	Atoms					ZeroOcc	AltConf	
			Total	C	Cl	N	O			S
3	A	1	30	20	1	4	4	1	0	0
3	B	1	30	20	1	4	4	1	0	0


- Molecule 4 is water.

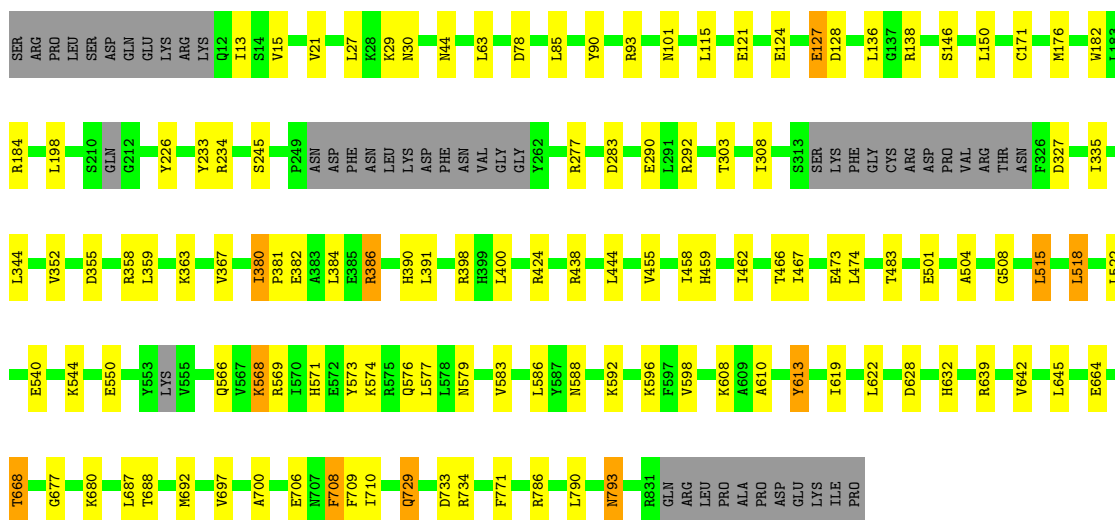
Mol	Chain	Residues	Atoms		ZeroOcc	AltConf
4	A	357	Total	O	0	0
			357	357		
4	B	260	Total	O	0	0
			260	260		

3 Residue-property plots [i](#)


These plots are drawn for all protein, RNA, DNA and oligosaccharide chains in the entry. The first graphic for a chain summarises the proportions of the various outlier classes displayed in the second graphic. The second graphic shows the sequence view annotated by issues in geometry and electron density. Residues are color-coded according to the number of geometric quality criteria for which they contain at least one outlier: green = 0, yellow = 1, orange = 2 and red = 3 or more. A red dot above a residue indicates a poor fit to the electron density ($RSRZ > 2$). Stretches of 2 or more consecutive residues without any outlier are shown as a green connector. Residues present in the sample, but not in the model, are shown in grey.

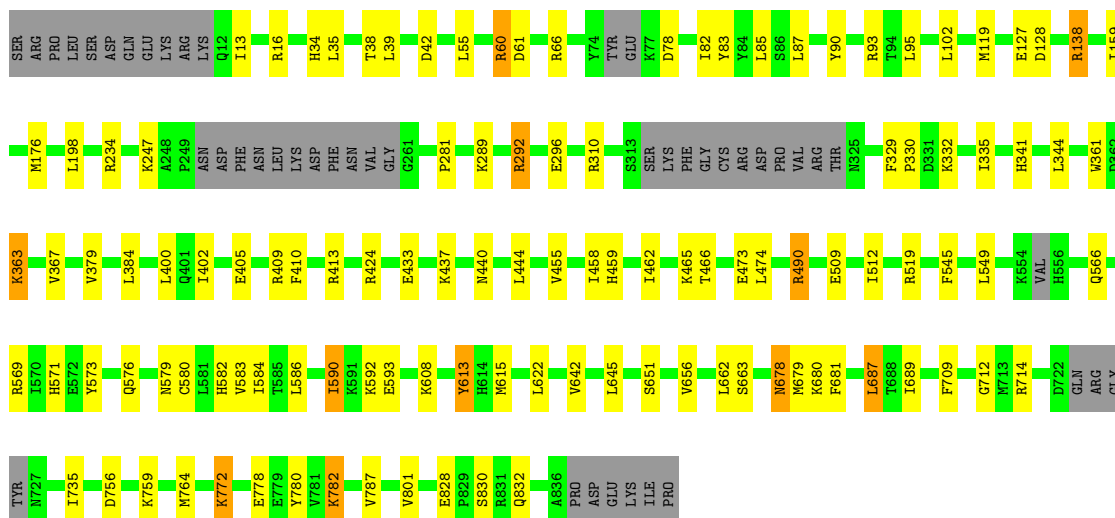
- Molecule 1: Glycogen phosphorylase, muscle form

Chain A: 



- Molecule 1: Glycogen phosphorylase, muscle form

Chain B: 



4 Data and refinement statistics i

Property	Value	Source
Space group	P 21 21 21	Depositor
Cell constants a, b, c, α , β , γ	114.40Å 125.34Å 129.31Å 90.00° 90.00° 90.00°	Depositor
Resolution (Å)	33.00 – 1.91 33.00 – 1.91	Depositor EDS
% Data completeness (in resolution range)	80.5 (33.00-1.91) 75.0 (33.00-1.91)	Depositor EDS
R_{merge}	(Not available)	Depositor
R_{sym}	(Not available)	Depositor
$\langle I/\sigma(I) \rangle$ ¹	1.52 (at 1.91Å)	Xtrriage
Refinement program	REFMAC 5.2.0005	Depositor
R, R_{free}	0.255 , 0.297 0.268 , 0.308	Depositor DCC
R_{free} test set	5805 reflections (5.00%)	wwPDB-VP
Wilson B-factor (Å ²)	26.3	Xtrriage
Anisotropy	0.112	Xtrriage
Bulk solvent k_{sol} (e/Å ³), B_{sol} (Å ²)	0.41 , 31.2	EDS
L-test for twinning ²	$\langle L \rangle = 0.42$, $\langle L^2 \rangle = 0.24$	Xtrriage
Estimated twinning fraction	0.197 for -h,l,k	Xtrriage
F_o, F_c correlation	0.91	EDS
Total number of atoms	13536	wwPDB-VP
Average B, all atoms (Å ²)	32.0	wwPDB-VP

Xtrriage's analysis on translational NCS is as follows: *The largest off-origin peak in the Patterson function is 3.40% of the height of the origin peak. No significant pseudotranslation is detected.*

¹Intensities estimated from amplitudes.

²Theoretical values of $\langle |L| \rangle$, $\langle L^2 \rangle$ for acentric reflections are 0.5, 0.333 respectively for untwinned datasets, and 0.375, 0.2 for perfectly twinned datasets.

5 Model quality [i](#)

5.1 Standard geometry [i](#)

Bond lengths and bond angles in the following residue types are not validated in this section: PLR, FRX

The Z score for a bond length (or angle) is the number of standard deviations the observed value is removed from the expected value. A bond length (or angle) with $|Z| > 5$ is considered an outlier worth inspection. RMSZ is the root-mean-square of all Z scores of the bond lengths (or angles).

Mol	Chain	Bond lengths		Bond angles	
		RMSZ	# Z >5	RMSZ	# Z >5
1	A	0.41	0/6559	0.57	1/8880 (0.0%)
1	B	0.39	0/6553	0.55	0/8873
All	All	0.40	0/13112	0.56	1/17753 (0.0%)

There are no bond length outliers.

All (1) bond angle outliers are listed below:

Mol	Chain	Res	Type	Atoms	Z	Observed(°)	Ideal(°)
1	A	136	LEU	CA-CB-CG	5.99	129.08	115.30

There are no chirality outliers.

There are no planarity outliers.

5.2 Too-close contacts [i](#)

In the following table, the Non-H and H(model) columns list the number of non-hydrogen atoms and hydrogen atoms in the chain respectively. The H(added) column lists the number of hydrogen atoms added and optimized by MolProbity. The Clashes column lists the number of clashes within the asymmetric unit, whereas Symm-Clashes lists symmetry-related clashes.

Mol	Chain	Non-H	H(model)	H(added)	Clashes	Symm-Clashes
1	A	6416	0	6339	68	0
1	B	6413	0	6319	70	0
2	A	15	0	10	8	0
2	B	15	0	10	6	0
3	A	30	0	19	1	0
3	B	30	0	19	1	0
4	A	357	0	0	7	0
4	B	260	0	0	4	0

Continued on next page...

Continued from previous page...

Mol	Chain	Non-H	H(model)	H(added)	Clashes	Symm-Clashes
All	All	13536	0	12716	138	0

The all-atom clashscore is defined as the number of clashes found per 1000 atoms (including hydrogen atoms). The all-atom clashscore for this structure is 5.

All (138) close contacts within the same asymmetric unit are listed below, sorted by their clash magnitude.

Atom-1	Atom-2	Interatomic distance (Å)	Clash overlap (Å)
1:B:680:LYS:NZ	2:B:902:PLR:H4A2	1.28	1.42
1:B:680:LYS:HZ2	2:B:902:PLR:C4A	1.58	1.11
1:A:680:LYS:HZ1	2:A:901:PLR:H4A3	1.27	0.99
1:B:680:LYS:HZ1	2:B:902:PLR:H4A3	1.29	0.96
1:B:680:LYS:HZ1	2:B:902:PLR:C4A	1.69	0.95
1:A:138:ARG:O	1:A:138:ARG:HD3	1.71	0.91
1:A:680:LYS:NZ	2:A:901:PLR:H4A3	1.88	0.86
1:A:571:HIS:HB2	1:A:574:LYS:HG2	1.60	0.84
1:A:680:LYS:HZ2	2:A:901:PLR:H4A2	1.45	0.82
1:A:680:LYS:NZ	2:A:901:PLR:H4A2	1.99	0.77
1:A:93:ARG:HH21	1:A:124:GLU:HA	1.51	0.75
1:B:87:LEU:HD11	1:B:296:GLU:HG2	1.69	0.74
4:A:1193:HOH:O	1:B:60:ARG:HD3	1.88	0.73
1:B:55:LEU:HD23	1:B:95:LEU:HD21	1.71	0.72
1:A:85:LEU:HD13	1:A:335:ILE:HG23	1.71	0.71
1:A:680:LYS:HZ2	2:A:901:PLR:C4A	2.00	0.71
1:A:569:ARG:NH1	1:A:608:LYS:O	2.25	0.69
1:B:778:GLU:O	1:B:782:LYS:HE2	1.93	0.68
1:B:13:ILE:HG13	1:B:16:ARG:HG3	1.74	0.67
1:A:515:LEU:HD22	1:A:518:LEU:HD22	1.77	0.67
3:A:904:FRX:H151	3:B:903:FRX:O26	1.95	0.67
1:A:455:VAL:H	1:A:459:HIS:HD2	1.43	0.66
1:B:509:GLU:O	1:B:512:ILE:HG12	1.97	0.65
1:A:184:ARG:HD3	1:B:247:LYS:HZ1	1.63	0.63
1:B:281:PRO:O	1:B:569:ARG:NH2	2.33	0.61
1:A:355:ASP:OD2	1:A:398:ARG:HD3	2.02	0.60
1:A:540:GLU:O	1:A:544:LYS:HG2	2.00	0.60
1:B:592:LYS:HG3	1:B:593:GLU:HG2	1.84	0.60
1:A:588:ASN:O	1:A:592:LYS:HG2	2.02	0.59
1:A:709:PHE:HE1	1:A:786:ARG:HG3	1.67	0.59
1:B:545:PHE:CE1	1:B:656:VAL:HG22	2.38	0.58
1:B:138:ARG:O	1:B:138:ARG:HD3	2.03	0.58
1:A:610:ALA:HB3	1:A:613:TYR:HB2	1.85	0.58

Continued on next page...

Continued from previous page...

Atom-1	Atom-2	Interatomic distance (Å)	Clash overlap (Å)
1:B:361:TRP:CH2	1:B:402:ILE:HG23	2.40	0.57
1:B:586:LEU:O	1:B:590:ILE:HG23	2.03	0.57
1:B:85:LEU:HD13	1:B:335:ILE:HG23	1.86	0.57
1:B:680:LYS:HZ2	2:B:902:PLR:H4A2	0.63	0.57
1:A:226:TYR:HE1	1:A:245:SER:HG	1.53	0.56
1:A:13:ILE:HG22	1:A:15:VAL:HG12	1.87	0.56
1:A:568:LYS:CE	4:A:993:HOH:O	2.52	0.56
1:A:184:ARG:HD3	1:B:247:LYS:NZ	2.20	0.55
1:A:290:GLU:HG3	1:A:391:LEU:HD11	1.88	0.55
1:A:568:LYS:HE2	4:A:993:HOH:O	2.07	0.55
1:B:361:TRP:HH2	1:B:402:ILE:HG23	1.70	0.55
1:B:410:PHE:O	1:B:413:ARG:HB3	2.07	0.55
1:B:34:HIS:HE1	1:B:61:ASP:OD2	1.90	0.54
1:A:734:ARG:HG2	4:A:1175:HOH:O	2.07	0.54
1:B:582:HIS:HB2	1:B:780:TYR:CE2	2.43	0.54
1:B:87:LEU:HD12	1:B:341:HIS:HB3	1.90	0.53
1:B:138:ARG:HB3	4:B:971:HOH:O	2.08	0.53
1:B:83:TYR:HE1	1:B:310:ARG:HH21	1.57	0.53
1:A:93:ARG:NH2	1:A:124:GLU:HA	2.20	0.52
1:A:598:VAL:HG22	1:A:639:ARG:HD2	1.92	0.51
1:B:34:HIS:HD2	1:B:38:THR:OG1	1.92	0.51
1:A:93:ARG:NH2	1:A:124:GLU:OE2	2.42	0.51
1:A:571:HIS:HB2	1:A:574:LYS:CG	2.38	0.51
1:B:678:ASN:HD22	1:B:678:ASN:N	2.07	0.51
1:A:455:VAL:O	1:A:483:THR:HA	2.10	0.51
1:A:569:ARG:NH1	4:A:1070:HOH:O	2.44	0.50
1:B:55:LEU:CD2	1:B:95:LEU:HD21	2.41	0.50
1:B:424:ARG:NH2	1:B:473:GLU:OE1	2.45	0.50
1:A:458:ILE:O	1:A:462:ILE:HG13	2.12	0.49
1:A:692:MET:HG3	1:A:697:VAL:HG22	1.93	0.49
1:A:424:ARG:NH2	1:A:473:GLU:OE2	2.44	0.49
1:A:308:ILE:HD13	1:A:352:VAL:HG11	1.93	0.49
1:A:327:ASP:OD1	1:A:363:LYS:HE2	2.12	0.49
1:B:519:ARG:NH1	4:B:1010:HOH:O	2.44	0.49
1:A:127:GLU:HG2	1:A:182:TRP:HA	1.94	0.49
1:B:462:ILE:HA	1:B:465:LYS:HG2	1.95	0.49
1:A:793:ASN:HD22	1:A:793:ASN:C	2.16	0.49
1:B:756:ASP:HB3	1:B:759:LYS:HD2	1.94	0.49
1:B:363:LYS:O	1:B:367:VAL:HG23	2.12	0.49
1:B:566:GLN:HE22	1:B:576:GLN:HA	1.78	0.49
1:B:678:ASN:HD22	1:B:679:MET:H	1.61	0.49

Continued on next page...

Continued from previous page...

Atom-1	Atom-2	Interatomic distance (Å)	Clash overlap (Å)
1:A:568:LYS:HE2	4:A:915:HOH:O	2.13	0.48
1:B:458:ILE:O	1:B:462:ILE:HG23	2.14	0.48
1:B:138:ARG:HG3	2:B:902:PLR:H4A3	1.96	0.48
1:B:569:ARG:HD2	1:B:608:LYS:O	2.12	0.48
1:B:128:ASP:OD1	1:B:651:SER:HB3	2.13	0.48
1:B:329:PHE:HB3	1:B:330:PRO:HD3	1.96	0.47
1:A:577:LEU:HD13	1:A:619:ILE:HG12	1.95	0.47
1:B:830:SER:HB3	1:B:832:GLN:HG3	1.97	0.47
1:A:668:THR:HG21	1:A:771:PHE:HB3	1.96	0.47
1:B:778:GLU:H	1:B:778:GLU:CD	2.17	0.47
1:A:680:LYS:CE	2:A:901:PLR:C4A	2.93	0.47
1:B:363:LYS:O	1:B:363:LYS:HE2	2.15	0.47
1:A:677:GLY:HA2	1:A:680:LYS:HD2	1.96	0.47
1:A:729:GLN:NE2	1:A:733:ASP:OD2	2.48	0.46
1:B:405:GLU:OE2	1:B:409:ARG:NH2	2.47	0.46
1:B:433:GLU:OE1	1:B:437:LYS:NZ	2.48	0.46
1:B:571:HIS:CD2	1:B:613:TYR:HE2	2.33	0.46
1:A:13:ILE:HG23	1:A:501:GLU:OE2	2.15	0.46
1:A:680:LYS:CE	2:A:901:PLR:H4A2	2.45	0.46
1:B:687:LEU:HD13	1:B:801:VAL:HG22	1.97	0.46
1:A:363:LYS:O	1:A:367:VAL:HG23	2.15	0.46
1:B:465:LYS:HG3	1:B:466:THR:HG23	1.98	0.46
1:B:663:SER:HB2	1:B:681:PHE:HB3	1.97	0.45
1:A:13:ILE:CG2	1:A:15:VAL:HG12	2.45	0.45
1:A:504:ALA:HA	1:A:508:GLY:O	2.16	0.45
1:A:628:ASP:O	1:A:632:HIS:ND1	2.47	0.45
1:B:490:ARG:HD2	4:B:1123:HOH:O	2.15	0.45
1:A:786:ARG:HH12	1:A:790:LEU:HD13	1.82	0.45
1:B:66:ARG:NH1	1:B:102:LEU:HD22	2.32	0.44
1:B:455:VAL:H	1:B:459:HIS:HD2	1.64	0.44
1:A:380:ILE:HG23	1:A:382:GLU:CD	2.38	0.43
1:B:613:TYR:HE1	1:B:615:MET:HB3	1.82	0.43
1:A:566:GLN:HE22	1:A:576:GLN:HA	1.83	0.43
1:A:146:SER:O	1:A:150:LEU:HG	2.18	0.43
1:A:700:ALA:HB1	1:A:710:ILE:HD11	1.99	0.43
1:A:85:LEU:HD11	1:A:303:THR:HG21	2.00	0.43
1:B:82:ILE:HD12	1:B:82:ILE:N	2.34	0.43
1:A:283:ASP:O	1:A:571:HIS:HE1	2.02	0.42
1:B:93:ARG:NH1	4:B:967:HOH:O	2.52	0.42
1:B:379:VAL:HG21	1:B:462:ILE:HD11	2.01	0.42
1:B:292:ARG:O	1:B:292:ARG:HD3	2.19	0.42

Continued on next page...

Continued from previous page...

Atom-1	Atom-2	Interatomic distance (Å)	Clash overlap (Å)
1:A:380:ILE:HA	1:A:381:PRO:HD3	1.81	0.42
1:A:386:ARG:HB2	1:A:438:ARG:HD3	2.01	0.42
1:B:35:LEU:HA	1:B:39:LEU:HD12	2.01	0.42
1:A:688:THR:HB	1:A:708:PHE:CE2	2.55	0.42
1:B:384:LEU:HD21	1:B:440:ASN:HD21	1.85	0.42
1:A:583:VAL:HG11	1:A:642:VAL:HG21	2.01	0.42
1:A:700:ALA:CB	1:A:710:ILE:HD11	2.50	0.42
1:A:171:CYS:HB3	1:A:176:MET:CG	2.50	0.41
1:B:78:ASP:OD2	1:B:332:LYS:HE2	2.21	0.41
1:B:580:CYS:O	1:B:584:ILE:HG13	2.20	0.41
1:B:583:VAL:HG11	1:B:642:VAL:HG21	2.03	0.41
1:A:101:ASN:HD22	1:A:233:TYR:HA	1.85	0.41
1:A:566:GLN:HA	4:A:975:HOH:O	2.20	0.41
1:B:735:ILE:HD13	1:B:778:GLU:OE2	2.20	0.41
1:A:566:GLN:HB2	1:A:664:GLU:HB2	2.03	0.41
1:A:29:LYS:HG2	1:A:30:ASN:N	2.35	0.41
1:A:466:THR:OG1	1:A:467:ILE:N	2.53	0.41
1:B:87:LEU:CD2	1:B:159:ILE:HD12	2.51	0.41
1:B:712:GLY:O	1:B:714:ARG:NH1	2.54	0.41
1:B:689:ILE:HA	1:B:709:PHE:HB2	2.02	0.40
2:A:901:PLR:H5A1	2:A:901:PLR:H4A1	1.82	0.40
1:B:384:LEU:HD21	1:B:440:ASN:ND2	2.37	0.40
1:B:662:LEU:HD22	1:B:787:VAL:HG11	2.03	0.40

There are no symmetry-related clashes.

5.3 Torsion angles [i](#)

5.3.1 Protein backbone [i](#)

In the following table, the Percentiles column shows the percent Ramachandran outliers of the chain as a percentile score with respect to all X-ray entries followed by that with respect to entries of similar resolution.

The Analysed column shows the number of residues for which the backbone conformation was analysed, and the total number of residues.

Mol	Chain	Analysed	Favoured	Allowed	Outliers	Percentiles
1	A	784/842 (93%)	758 (97%)	26 (3%)	0	100 100
1	B	784/842 (93%)	750 (96%)	33 (4%)	1 (0%)	48 40

Continued on next page...

Continued from previous page...

Mol	Chain	Analysed	Favoured	Allowed	Outliers	Percentiles
All	All	1568/1684 (93%)	1508 (96%)	59 (4%)	1 (0%)	48 40

All (1) Ramachandran outliers are listed below:

Mol	Chain	Res	Type
1	B	772	LYS

5.3.2 Protein sidechains [i](#)

In the following table, the Percentiles column shows the percent sidechain outliers of the chain as a percentile score with respect to all X-ray entries followed by that with respect to entries of similar resolution.

The Analysed column shows the number of residues for which the sidechain conformation was analysed, and the total number of residues.

Mol	Chain	Analysed	Rotameric	Outliers	Percentiles
1	A	675/731 (92%)	633 (94%)	42 (6%)	15 4
1	B	676/731 (92%)	646 (96%)	30 (4%)	24 10
All	All	1351/1462 (92%)	1279 (95%)	72 (5%)	19 6

All (72) residues with a non-rotameric sidechain are listed below:

Mol	Chain	Res	Type
1	A	21	VAL
1	A	27	LEU
1	A	44	ASN
1	A	63	LEU
1	A	78	ASP
1	A	90	TYR
1	A	115	LEU
1	A	121	GLU
1	A	127	GLU
1	A	128	ASP
1	A	198	LEU
1	A	234	ARG
1	A	277	ARG
1	A	292	ARG
1	A	344	LEU
1	A	358	ARG
1	A	359	LEU

Continued on next page...

Continued from previous page...

Mol	Chain	Res	Type
1	A	380	ILE
1	A	384	LEU
1	A	386	ARG
1	A	390	HIS
1	A	400	LEU
1	A	444	LEU
1	A	474	LEU
1	A	515	LEU
1	A	518	LEU
1	A	522	LEU
1	A	550	GLU
1	A	568	LYS
1	A	573	TYR
1	A	579	ASN
1	A	586	LEU
1	A	596	LYS
1	A	613	TYR
1	A	622	LEU
1	A	645	LEU
1	A	668	THR
1	A	687	LEU
1	A	706	GLU
1	A	708	PHE
1	A	729	GLN
1	A	793	ASN
1	B	42	ASP
1	B	60	ARG
1	B	90	TYR
1	B	119	MET
1	B	127	GLU
1	B	138	ARG
1	B	176	MET
1	B	198	LEU
1	B	234	ARG
1	B	289	LYS
1	B	292	ARG
1	B	344	LEU
1	B	363	LYS
1	B	400	LEU
1	B	444	LEU
1	B	474	LEU
1	B	490	ARG

Continued on next page...

Continued from previous page...

Mol	Chain	Res	Type
1	B	549	LEU
1	B	573	TYR
1	B	579	ASN
1	B	590	ILE
1	B	613	TYR
1	B	622	LEU
1	B	645	LEU
1	B	678	ASN
1	B	687	LEU
1	B	764	MET
1	B	772	LYS
1	B	782	LYS
1	B	828	GLU

Sometimes sidechains can be flipped to improve hydrogen bonding and reduce clashes. All (29) such sidechains are listed below:

Mol	Chain	Res	Type
1	A	36	HIS
1	A	101	ASN
1	A	239	ASN
1	A	453	ASN
1	A	459	HIS
1	A	481	ASN
1	A	484	ASN
1	A	566	GLN
1	A	579	ASN
1	A	723	GLN
1	A	754	GLN
1	A	793	ASN
1	B	12	GLN
1	B	34	HIS
1	B	97	ASN
1	B	211	GLN
1	B	219	GLN
1	B	408	GLN
1	B	412	ASN
1	B	450	HIS
1	B	459	HIS
1	B	481	ASN
1	B	484	ASN
1	B	566	GLN
1	B	579	ASN

Continued on next page...

Continued from previous page...

Mol	Chain	Res	Type
1	B	595	ASN
1	B	678	ASN
1	B	696	ASN
1	B	754	GLN

5.3.3 RNA [i](#)

There are no RNA molecules in this entry.

5.4 Non-standard residues in protein, DNA, RNA chains [i](#)

There are no non-standard protein/DNA/RNA residues in this entry.

5.5 Carbohydrates [i](#)

There are no oligosaccharides in this entry.

5.6 Ligand geometry [i](#)

4 ligands are modelled in this entry.

In the following table, the Counts columns list the number of bonds (or angles) for which Mogul statistics could be retrieved, the number of bonds (or angles) that are observed in the model and the number of bonds (or angles) that are defined in the Chemical Component Dictionary. The Link column lists molecule types, if any, to which the group is linked. The Z score for a bond length (or angle) is the number of standard deviations the observed value is removed from the expected value. A bond length (or angle) with $|Z| > 2$ is considered an outlier worth inspection. RMSZ is the root-mean-square of all Z scores of the bond lengths (or angles).

Mol	Type	Chain	Res	Link	Bond lengths			Bond angles		
					Counts	RMSZ	# Z > 2	Counts	RMSZ	# Z > 2
3	FRX	B	903	-	29,33,33	2.36	4 (13%)	31,47,47	3.71	8 (25%)
2	PLR	B	902	1	15,15,15	1.08	1 (6%)	21,22,22	1.56	3 (14%)
2	PLR	A	901	1	15,15,15	1.13	1 (6%)	21,22,22	1.44	3 (14%)
3	FRX	A	904	-	29,33,33	2.29	4 (13%)	31,47,47	3.68	9 (29%)

In the following table, the Chirals column lists the number of chiral outliers, the number of chiral centers analysed, the number of these observed in the model and the number defined in the Chemical Component Dictionary. Similar counts are reported in the Torsion and Rings columns. '-' means no outliers of that kind were identified.

Mol	Type	Chain	Res	Link	Chirals	Torsions	Rings
3	FRX	B	903	-	-	4/13/32/32	0/4/4/4
2	PLR	B	902	1	-	0/6/6/6	0/1/1/1
2	PLR	A	901	1	-	0/6/6/6	0/1/1/1
3	FRX	A	904	-	-	1/13/32/32	0/4/4/4

All (10) bond length outliers are listed below:

Mol	Chain	Res	Type	Atoms	Z	Observed(Å)	Ideal(Å)
3	B	903	FRX	C6-C7	-8.91	1.23	1.39
3	A	904	FRX	C6-C7	-8.78	1.24	1.39
3	B	903	FRX	C3-C4	-6.60	1.31	1.42
3	A	904	FRX	C3-C4	-6.31	1.31	1.42
3	B	903	FRX	C6-C4	-5.00	1.22	1.41
3	A	904	FRX	C6-C4	-4.76	1.23	1.41
2	A	901	PLR	C2-N1	2.87	1.39	1.33
2	B	902	PLR	C2-N1	2.64	1.38	1.33
3	A	904	FRX	C5-C4	-2.08	1.33	1.41
3	B	903	FRX	C5-C4	-2.07	1.33	1.41

All (23) bond angle outliers are listed below:

Mol	Chain	Res	Type	Atoms	Z	Observed(°)	Ideal(°)
3	B	903	FRX	C7-C6-C4	17.37	128.22	106.55
3	A	904	FRX	C7-C6-C4	16.86	127.58	106.55
3	A	904	FRX	C21-N17-C19	5.37	124.22	118.31
3	B	903	FRX	C19-C13-N11	4.64	118.67	110.15
3	A	904	FRX	C7-C11-N11	4.47	123.79	115.19
3	B	903	FRX	C21-N17-C19	4.41	123.16	118.31
2	B	902	PLR	C4A-C4-C5	-4.16	116.65	120.94
3	A	904	FRX	C24-N22-C22	4.02	130.31	122.82
3	B	903	FRX	C5-C4-C3	3.95	116.51	105.38
3	A	904	FRX	C21-N17-C17	-3.78	115.98	120.20
3	A	904	FRX	C5-C4-C3	3.76	115.96	105.38
3	B	903	FRX	C13-N11-C11	3.57	130.13	121.56
3	A	904	FRX	C25-C24-N22	-3.33	103.74	111.60
2	A	901	PLR	C4A-C4-C5	-3.25	117.59	120.94
2	B	902	PLR	C5-C6-N1	-3.11	118.77	123.83
3	B	903	FRX	C21-N17-C17	-2.94	116.92	120.20
2	A	901	PLR	C5-C6-N1	-2.80	119.27	123.83
3	B	903	FRX	C6-C4-C3	-2.80	97.48	105.38
2	B	902	PLR	C6-C5-C4	2.79	120.38	118.10
3	A	904	FRX	O13-C11-C7	-2.54	115.46	121.08
3	A	904	FRX	C6-C4-C3	-2.48	98.39	105.38

Continued on next page...

Continued from previous page...

Mol	Chain	Res	Type	Atoms	Z	Observed(°)	Ideal(°)
2	A	901	PLR	C6-C5-C4	2.13	119.84	118.10
3	B	903	FRX	C25-C24-N22	-2.07	106.72	111.60

There are no chirality outliers.

All (5) torsion outliers are listed below:

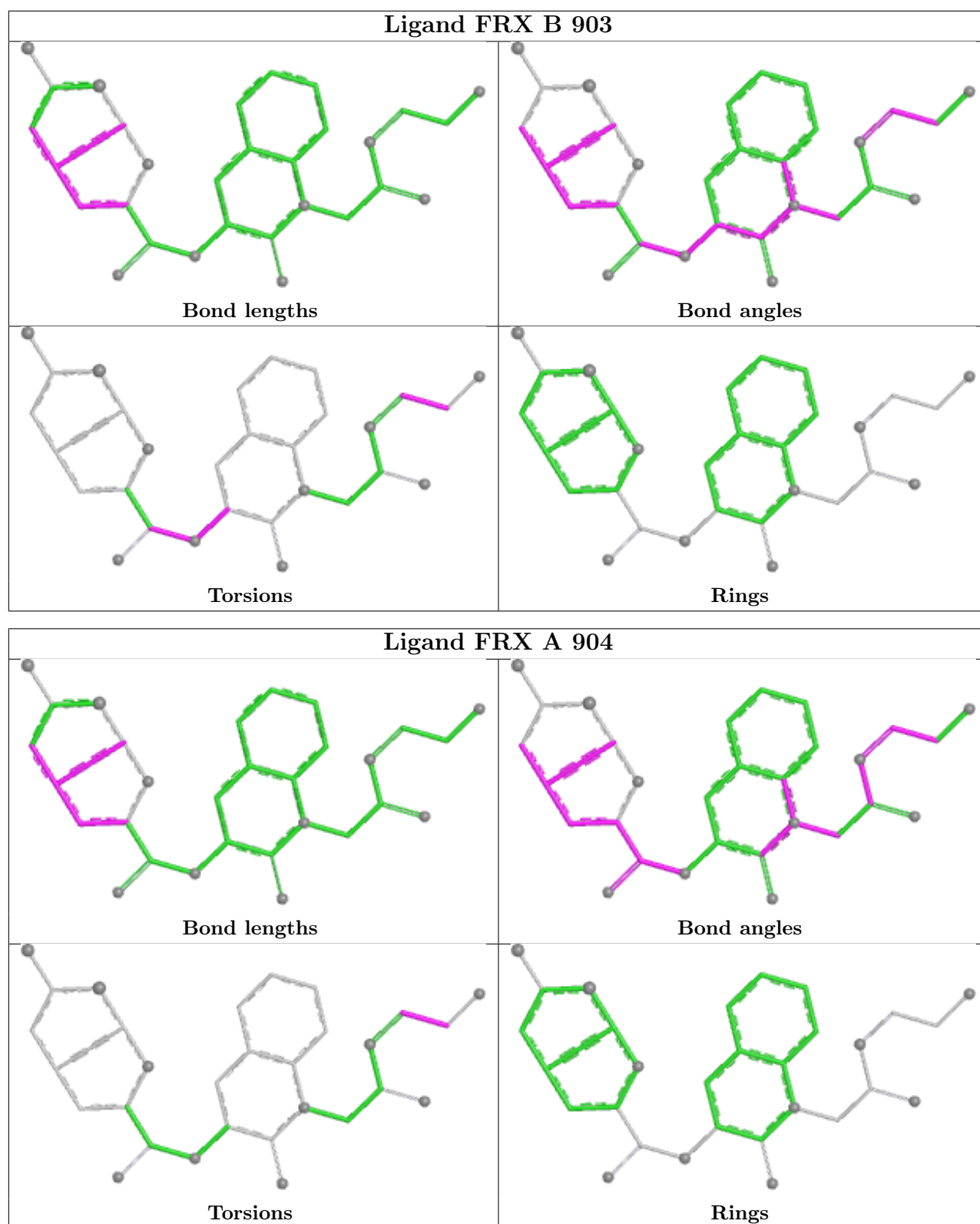
Mol	Chain	Res	Type	Atoms
3	B	903	FRX	C19-C13-N11-C11
3	B	903	FRX	O13-C11-N11-C13
3	B	903	FRX	N22-C24-C25-O25
3	A	904	FRX	N22-C24-C25-O25
3	B	903	FRX	C7-C11-N11-C13

There are no ring outliers.

4 monomers are involved in 15 short contacts:

Mol	Chain	Res	Type	Clashes	Symm-Clashes
3	B	903	FRX	1	0
2	B	902	PLR	6	0
2	A	901	PLR	8	0
3	A	904	FRX	1	0

The following is a two-dimensional graphical depiction of Mogul quality analysis of bond lengths, bond angles, torsion angles, and ring geometry for all instances of the Ligand of Interest. In addition, ligands with molecular weight > 250 and outliers as shown on the validation Tables will also be included. For torsion angles, if less than 5% of the Mogul distribution of torsion angles is within 10 degrees of the torsion angle in question, then that torsion angle is considered an outlier. Any bond that is central to one or more torsion angles identified as an outlier by Mogul will be highlighted in the graph. For rings, the root-mean-square deviation (RMSD) between the ring in question and similar rings identified by Mogul is calculated over all ring torsion angles. If the average RMSD is greater than 60 degrees and the minimal RMSD between the ring in question and any Mogul-identified rings is also greater than 60 degrees, then that ring is considered an outlier. The outliers are highlighted in purple. The color gray indicates Mogul did not find sufficient equivalents in the CSD to analyse the geometry.



5.7 Other polymers [\(i\)](#)

There are no such residues in this entry.

5.8 Polymer linkage issues

There are no chain breaks in this entry.

6 Fit of model and data [i](#)

6.1 Protein, DNA and RNA chains [i](#)

In the following table, the column labelled ‘#RSRZ > 2’ contains the number (and percentage) of RSRZ outliers, followed by percent RSRZ outliers for the chain as percentile scores relative to all X-ray entries and entries of similar resolution. The OWAB column contains the minimum, median, 95th percentile and maximum values of the occupancy-weighted average B-factor per residue. The column labelled ‘Q < 0.9’ lists the number of (and percentage) of residues with an average occupancy less than 0.9.

Mol	Chain	Analysed	<RSRZ>	#RSRZ>2	OWAB(Å ²)	Q<0.9
1	A	794/842 (94%)	-0.88	0 100 100	20, 29, 39, 49	10 (1%)
1	B	796/842 (94%)	-0.79	0 100 100	22, 33, 47, 53	8 (1%)
All	All	1590/1684 (94%)	-0.83	0 100 100	20, 31, 44, 53	18 (1%)

There are no RSRZ outliers to report.

6.2 Non-standard residues in protein, DNA, RNA chains [i](#)

There are no non-standard protein/DNA/RNA residues in this entry.

6.3 Carbohydrates [i](#)

There are no monosaccharides in this entry.

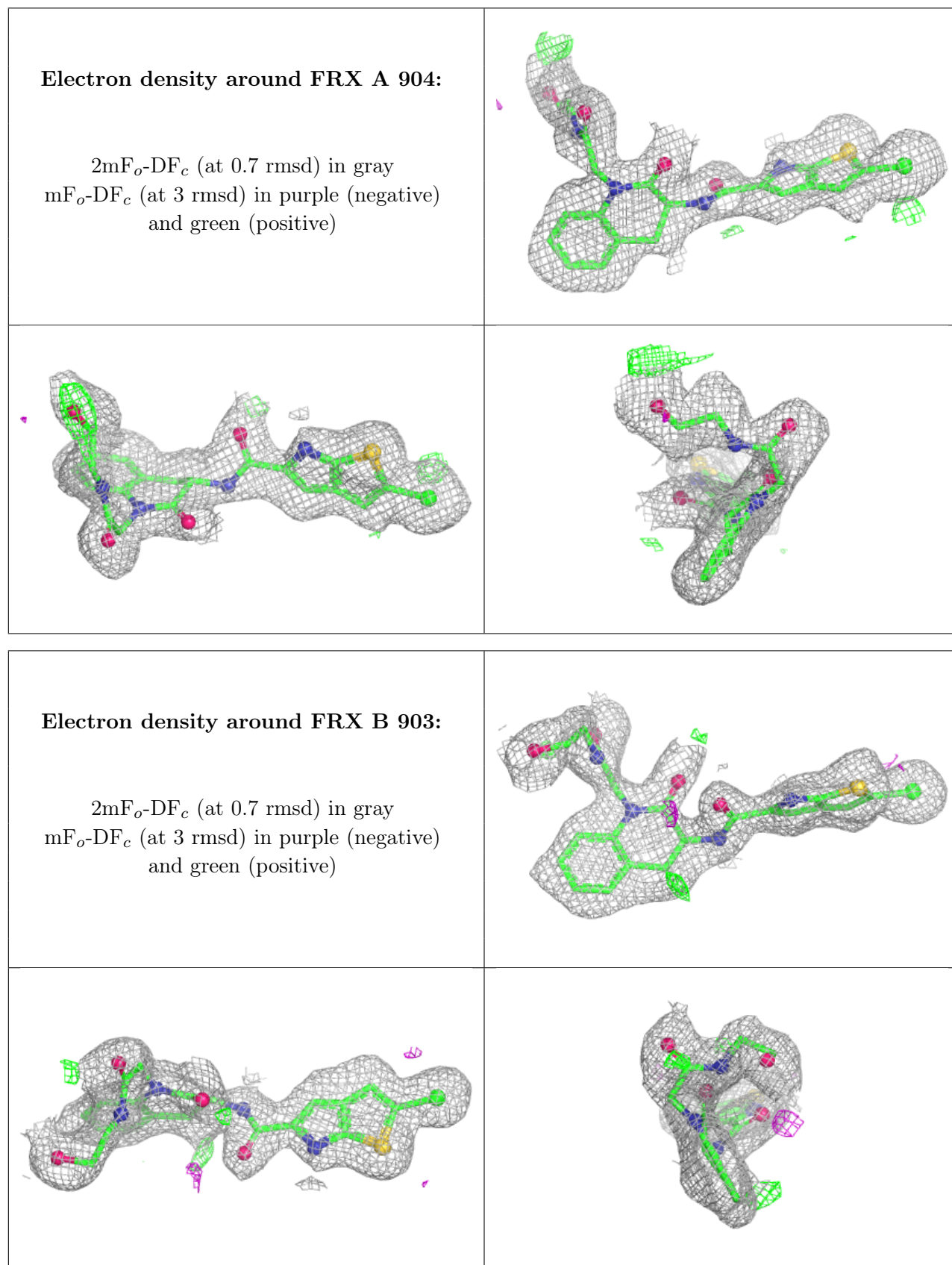
6.4 Ligands [i](#)

In the following table, the Atoms column lists the number of modelled atoms in the group and the number defined in the chemical component dictionary. The B-factors column lists the minimum, median, 95th percentile and maximum values of B factors of atoms in the group. The column labelled ‘Q < 0.9’ lists the number of atoms with occupancy less than 0.9.

Mol	Type	Chain	Res	Atoms	RSCC	RSR	B-factors(Å ²)	Q<0.9
2	PLR	A	901	15/15	0.99	0.04	20,21,23,24	0
2	PLR	B	902	15/15	0.99	0.03	20,23,26,26	0
3	FRX	A	904	30/30	0.99	0.05	28,33,41,43	0
3	FRX	B	903	30/30	0.99	0.05	25,34,39,39	0

The following is a graphical depiction of the model fit to experimental electron density of all instances of the Ligand of Interest. In addition, ligands with molecular weight > 250 and outliers

as shown on the geometry validation Tables will also be included. Each fit is shown from different orientation to approximate a three-dimensional view.



6.5 Other polymers [i](#)

There are no such residues in this entry.