



Full wwPDB X-ray Structure Validation Report ⓘ

Aug 20, 2023 – 07:18 PM EDT

PDB ID : 2IAJ
Title : Crystal Structure of K103N/Y181C Mutant HIV-1 Reverse Transcriptase (RT)
in Complex with ATP
Authors : Das, K.; Arnold, E.
Deposited on : 2006-09-08
Resolution : 2.50 Å(reported)

This is a Full wwPDB X-ray Structure Validation Report for a publicly released PDB entry.

We welcome your comments at validation@mail.wwpdb.org

A user guide is available at

<https://www.wwpdb.org/validation/2017/XrayValidationReportHelp>

with specific help available everywhere you see the ⓘ symbol.

The types of validation reports are described at

<http://www.wwpdb.org/validation/2017/FAQs#types>.

The following versions of software and data (see [references ⓘ](#)) were used in the production of this report:

MolProbity : 4.02b-467
Mogul : 1.8.5 (274361), CSD as541be (2020)
Xtriage (Phenix) : 1.13
EDS : 2.35
buster-report : 1.1.7 (2018)
Percentile statistics : 20191225.v01 (using entries in the PDB archive December 25th 2019)
Refmac : 5.8.0158
CCP4 : 7.0.044 (Gargrove)
Ideal geometry (proteins) : Engh & Huber (2001)
Ideal geometry (DNA, RNA) : Parkinson et al. (1996)
Validation Pipeline (wwPDB-VP) : 2.35

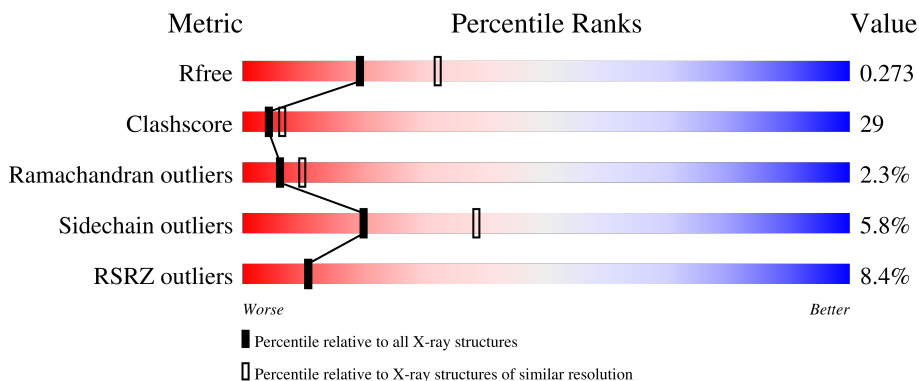
1 Overall quality at a glance

The following experimental techniques were used to determine the structure:

X-RAY DIFFRACTION


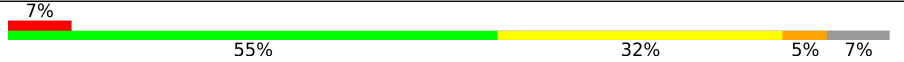
The reported resolution of this entry is 2.50 Å.

Percentile scores (ranging between 0-100) for global validation metrics of the entry are shown in the following graphic. The table shows the number of entries on which the scores are based.



Metric	Whole archive (#Entries)	Similar resolution (#Entries, resolution range(Å))
R_{free}	130704	4661 (2.50-2.50)
Clashscore	141614	5346 (2.50-2.50)
Ramachandran outliers	138981	5231 (2.50-2.50)
Sidechain outliers	138945	5233 (2.50-2.50)
RSRZ outliers	127900	4559 (2.50-2.50)

The table below summarises the geometric issues observed across the polymeric chains and their fit to the electron density. The red, orange, yellow and green segments of the lower bar indicate the fraction of residues that contain outliers for ≥ 3 , 2, 1 and 0 types of geometric quality criteria respectively. A grey segment represents the fraction of residues that are not modelled. The numeric value for each fraction is indicated below the corresponding segment, with a dot representing fractions $\leq 5\%$. The upper red bar (where present) indicates the fraction of residues that have poor fit to the electron density. The numeric value is given above the bar.

Mol	Chain	Length	Quality of chain
1	A	560	
2	B	447	

2 Entry composition [i](#)

There are 7 unique types of molecules in this entry. The entry contains 8177 atoms, of which 0 are hydrogens and 0 are deuteriums.

In the tables below, the ZeroOcc column contains the number of atoms modelled with zero occupancy, the AltConf column contains the number of residues with at least one atom in alternate conformation and the Trace column contains the number of residues modelled with at most 2 atoms.

- Molecule 1 is a protein called Reverse transcriptase/ribonuclease H (p66 RT).

Mol	Chain	Residues	Atoms					ZeroOcc	AltConf	Trace
			Total	C	N	O	S			
1	A	551	4427	2867	739	813	8	0	0	0

There are 3 discrepancies between the modelled and reference sequences:

Chain	Residue	Modelled	Actual	Comment	Reference
A	103	ASN	LYS	engineered mutation	UNP P03366
A	181	CYS	TYR	engineered mutation	UNP P03366
A	280	SER	CYS	engineered mutation	UNP P03366

- Molecule 2 is a protein called Reverse transcriptase/ribonuclease H; p51 RT.

Mol	Chain	Residues	Atoms					ZeroOcc	AltConf	Trace
			Total	C	N	O	S			
2	B	415	3395	2208	565	616	6	0	0	0

There are 3 discrepancies between the modelled and reference sequences:

Chain	Residue	Modelled	Actual	Comment	Reference
B	103	ASN	LYS	engineered mutation	UNP P03366
B	181	CYS	TYR	engineered mutation	UNP P03366
B	280	SER	CYS	engineered mutation	UNP P03366

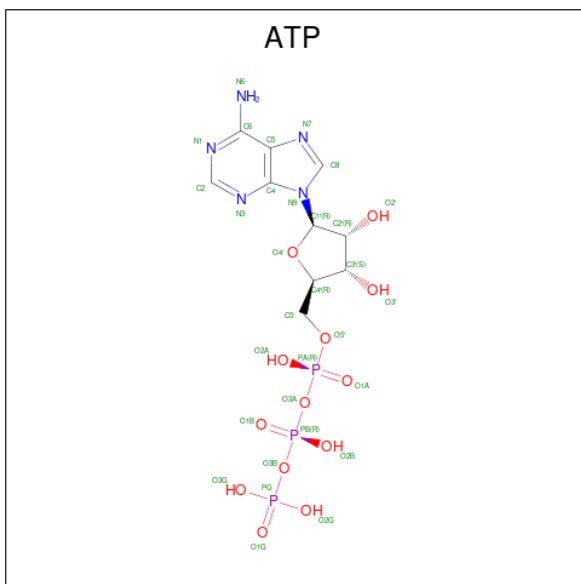
- Molecule 3 is MANGANESE (II) ION (three-letter code: MN) (formula: Mn).

Mol	Chain	Residues	Atoms		ZeroOcc	AltConf
3	A	3	Total	Mn	0	0
			3	3		

- Molecule 4 is SODIUM ION (three-letter code: NA) (formula: Na).

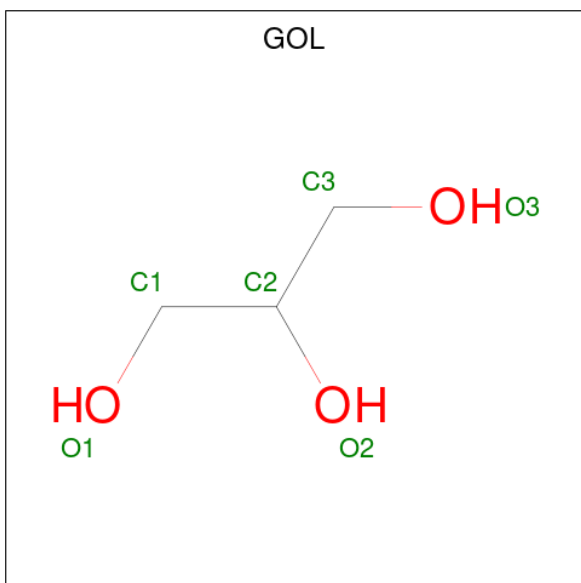
Mol	Chain	Residues	Atoms		ZeroOcc	AltConf
4	A	1	Total	Na	0	0
			1	1		

- Molecule 5 is ADENOSINE-5'-TRIPHOSPHATE (three-letter code: ATP) (formula: $C_{10}H_{16}N_5O_{13}P_3$).



Mol	Chain	Residues	Atoms				ZeroOcc	AltConf	
5	A	1	Total	C	N	O	P	0	0
			31	10	5	13	3		

- Molecule 6 is GLYCEROL (three-letter code: GOL) (formula: $C_3H_8O_3$).



Mol	Chain	Residues	Atoms			ZeroOcc	AltConf
6	B	1	Total	C	O	0	0
			6	3	3		
6	B	1	Total	C	O	0	0
			6	3	3		

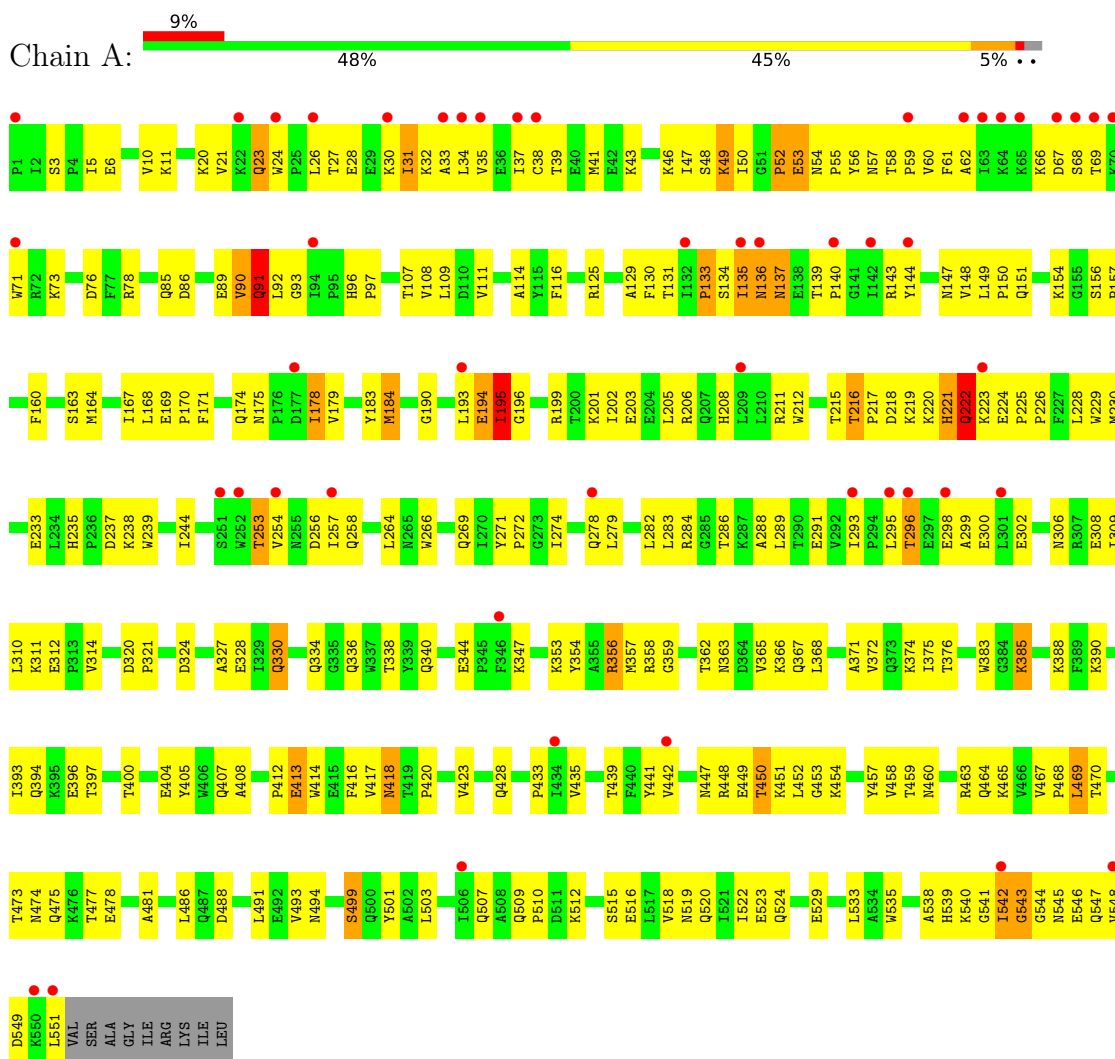
- Molecule 7 is water.

Mol	Chain	Residues	Atoms		ZeroOcc	AltConf
7	A	162	Total	O	0	0
			162	162		
7	B	146	Total	O	0	0
			146	146		

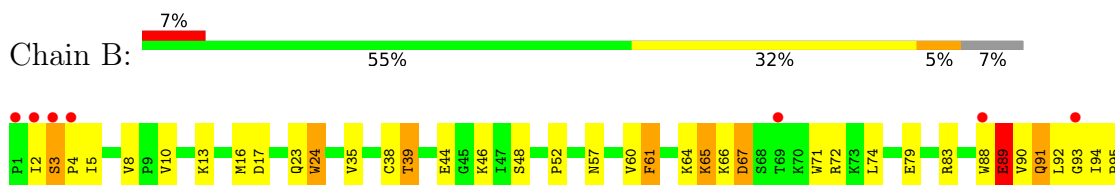
3 Residue-property plots i

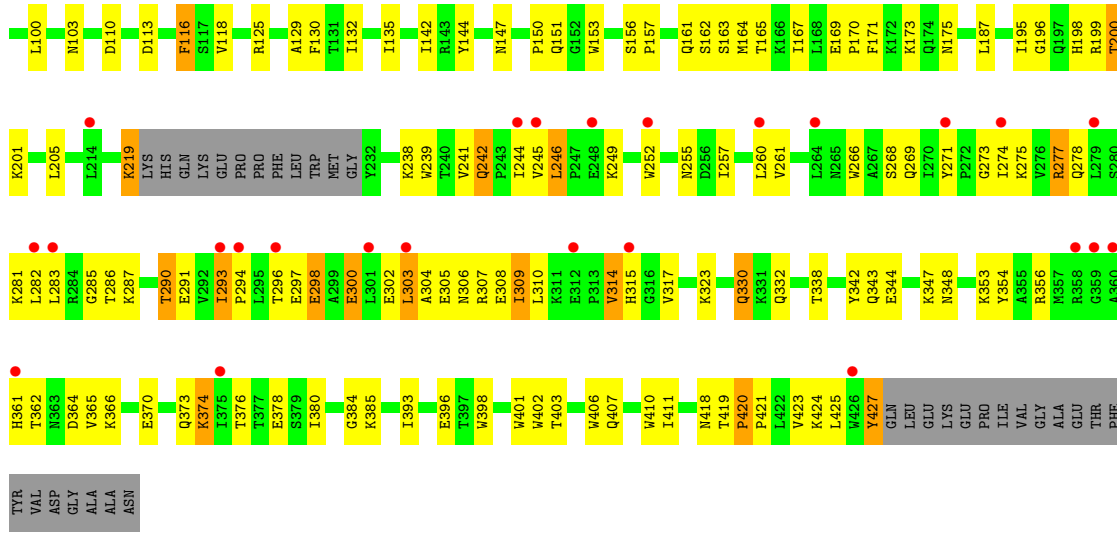
These plots are drawn for all protein, RNA, DNA and oligosaccharide chains in the entry. The first graphic for a chain summarises the proportions of the various outlier classes displayed in the second graphic. The second graphic shows the sequence view annotated by issues in geometry and electron density. Residues are color-coded according to the number of geometric quality criteria for which they contain at least one outlier: green = 0, yellow = 1, orange = 2 and red = 3 or more. A red dot above a residue indicates a poor fit to the electron density ($RSRZ > 2$). Stretches of 2 or more consecutive residues without any outlier are shown as a green connector. Residues present in the sample, but not in the model, are shown in grey.

- Molecule 1: Reverse transcriptase/ribonuclease H (p66 RT)



- Molecule 2: Reverse transcriptase/ribonuclease H; p51 RT





4 Data and refinement statistics

Property	Value	Source
Space group	C 1 2 1	Depositor
Cell constants a, b, c, α , β , γ	237.40Å 71.13Å 94.21Å 90.00° 105.86° 90.00°	Depositor
Resolution (Å)	19.96 – 2.50 38.73 – 2.50	Depositor EDS
% Data completeness (in resolution range)	85.6 (19.96-2.50) 86.9 (38.73-2.50)	Depositor EDS
R_{merge}	0.06	Depositor
R_{sym}	(Not available)	Depositor
$\langle I/\sigma(I) \rangle$ ¹	3.48 (at 2.51Å)	Xtrriage
Refinement program	CNS 1.1	Depositor
R, R_{free}	0.233 , 0.284 0.229 , 0.273	Depositor DCC
R_{free} test set	1841 reflections (4.03%)	wwPDB-VP
Wilson B-factor (Å ²)	54.4	Xtrriage
Anisotropy	0.068	Xtrriage
Bulk solvent k_{sol} (e/Å ³), B_{sol} (Å ²)	0.32 , 69.7	EDS
L-test for twinning ²	$\langle L \rangle = 0.49$, $\langle L^2 \rangle = 0.33$	Xtrriage
Estimated twinning fraction	No twinning to report.	Xtrriage
F_o, F_c correlation	0.94	EDS
Total number of atoms	8177	wwPDB-VP
Average B, all atoms (Å ²)	72.0	wwPDB-VP

Xtrriage's analysis on translational NCS is as follows: *The largest off-origin peak in the Patterson function is 4.57% of the height of the origin peak. No significant pseudotranslation is detected.*

¹Intensities estimated from amplitudes.

²Theoretical values of $\langle |L| \rangle$, $\langle L^2 \rangle$ for acentric reflections are 0.5, 0.333 respectively for untwinned datasets, and 0.375, 0.2 for perfectly twinned datasets.

5 Model quality [i](#)

5.1 Standard geometry [i](#)

Bond lengths and bond angles in the following residue types are not validated in this section: GOL, MN, NA, ATP

The Z score for a bond length (or angle) is the number of standard deviations the observed value is removed from the expected value. A bond length (or angle) with $|Z| > 5$ is considered an outlier worth inspection. RMSZ is the root-mean-square of all Z scores of the bond lengths (or angles).

Mol	Chain	Bond lengths		Bond angles	
		RMSZ	# Z >5	RMSZ	# Z >5
1	A	0.49	0/4544	0.75	3/6185 (0.0%)
2	B	0.53	0/3492	0.75	1/4749 (0.0%)
All	All	0.51	0/8036	0.75	4/10934 (0.0%)

There are no bond length outliers.

All (4) bond angle outliers are listed below:

Mol	Chain	Res	Type	Atoms	Z	Observed(°)	Ideal(°)
2	B	89	GLU	N-CA-C	-9.09	86.46	111.00
1	A	90	VAL	N-CA-C	-5.86	95.19	111.00
1	A	89	GLU	N-CA-C	5.75	126.54	111.00
1	A	86	ASP	CB-CG-OD2	-5.59	113.27	118.30

There are no chirality outliers.

There are no planarity outliers.

5.2 Too-close contacts [i](#)

In the following table, the Non-H and H(model) columns list the number of non-hydrogen atoms and hydrogen atoms in the chain respectively. The H(added) column lists the number of hydrogen atoms added and optimized by MolProbity. The Clashes column lists the number of clashes within the asymmetric unit, whereas Symm-Clashes lists symmetry-related clashes.

Mol	Chain	Non-H	H(model)	H(added)	Clashes	Symm-Clashes
1	A	4427	0	4444	290	0
2	B	3395	0	3413	184	0
3	A	3	0	0	0	0
4	A	1	0	0	0	0
5	A	31	0	12	1	0

Continued on next page...

Continued from previous page...

Mol	Chain	Non-H	H(model)	H(added)	Clashes	Symm-Clashes
6	B	12	0	16	3	0
7	A	162	0	0	8	0
7	B	146	0	0	2	0
All	All	8177	0	7885	458	0

The all-atom clashscore is defined as the number of clashes found per 1000 atoms (including hydrogen atoms). The all-atom clashscore for this structure is 29.

All (458) close contacts within the same asymmetric unit are listed below, sorted by their clash magnitude.

Atom-1	Atom-2	Interatomic distance (Å)	Clash overlap (Å)
2:B:293:ILE:HG23	2:B:294:PRO:HD2	1.22	1.19
2:B:420:PRO:HB2	2:B:421:PRO:HD2	1.28	1.16
1:A:542:ILE:HG22	1:A:543:GLY:H	1.17	1.09
1:A:48:SER:HB2	1:A:147:ASN:HD21	1.10	1.08
2:B:135:ILE:HD12	6:B:502:GOL:H2	1.42	1.02
1:A:131:THR:HG22	1:A:143:ARG:HG2	1.42	1.01
1:A:221:HIS:CE1	1:A:228:LEU:H	1.78	1.01
1:A:131:THR:CG2	1:A:143:ARG:HG2	1.92	1.00
2:B:91:GLN:O	2:B:94:ILE:HG22	1.60	1.00
2:B:297:GLU:C	2:B:298:GLU:HG2	1.83	0.94
1:A:125:ARG:HD3	1:A:147:ASN:HA	1.49	0.94
2:B:2:ILE:CG1	2:B:5:ILE:HD13	1.97	0.94
1:A:357:MET:HG2	1:A:359:GLY:H	1.33	0.93
1:A:68:SER:O	1:A:69:THR:HG22	1.68	0.92
2:B:91:GLN:CD	2:B:161:GLN:HG2	1.89	0.92
2:B:293:ILE:HG23	2:B:294:PRO:CD	2.00	0.91
1:A:57:ASN:OD1	1:A:131:THR:HG23	1.73	0.89
1:A:91:GLN:C	1:A:93:GLY:H	1.76	0.88
2:B:278:GLN:HE22	2:B:298:GLU:HG3	1.39	0.88
1:A:34:LEU:HD21	1:A:62:ALA:HB2	1.57	0.86
1:A:308:GLU:O	1:A:311:LYS:HG2	1.76	0.85
2:B:420:PRO:HB2	2:B:421:PRO:CD	2.06	0.85
1:A:458:VAL:HG22	1:A:464:GLN:HG2	1.58	0.83
2:B:252:TRP:HZ3	2:B:260:LEU:HD22	1.42	0.83
1:A:52:PRO:HG2	1:A:53:GLU:OE1	1.78	0.83
1:A:108:VAL:HB	1:A:221:HIS:HB2	1.61	0.83
2:B:297:GLU:O	2:B:298:GLU:HG2	1.81	0.81
2:B:90:VAL:C	2:B:92:LEU:H	1.83	0.81
1:A:442:VAL:HG13	1:A:481:ALA:HB1	1.60	0.80
1:A:362:THR:HG22	1:A:363:ASN:N	1.94	0.80

Continued on next page...

Continued from previous page...

Atom-1	Atom-2	Interatomic distance (Å)	Clash overlap (Å)
1:A:48:SER:HB2	1:A:147:ASN:ND2	1.93	0.80
1:A:542:ILE:HG23	2:B:283:LEU:HD13	1.64	0.80
1:A:91:GLN:C	1:A:93:GLY:N	2.34	0.79
1:A:362:THR:HG22	1:A:363:ASN:H	1.48	0.79
1:A:49:LYS:HD2	1:A:49:LYS:O	1.83	0.78
1:A:407:GLN:HE22	2:B:419:THR:H	1.32	0.78
2:B:90:VAL:O	2:B:92:LEU:N	2.17	0.77
1:A:354:TYR:HE1	1:A:374:LYS:HE2	1.50	0.77
1:A:354:TYR:CE1	1:A:374:LYS:HE2	2.19	0.77
2:B:242:GLN:HE21	2:B:353:LYS:HD3	1.48	0.77
1:A:542:ILE:HG22	1:A:543:GLY:N	1.98	0.76
1:A:114:ALA:HB1	1:A:160:PHE:CE1	2.21	0.76
1:A:516:GLU:HA	1:A:519:ASN:HD22	1.51	0.76
2:B:257:ILE:O	2:B:261:VAL:HG23	1.86	0.74
1:A:125:ARG:NH1	1:A:147:ASN:HB3	2.03	0.74
1:A:295:LEU:HD12	1:A:300:GLU:OE2	1.88	0.73
1:A:222:GLN:CB	1:A:224:GLU:HG3	2.17	0.73
1:A:503:LEU:HD22	1:A:535:TRP:HB2	1.70	0.72
2:B:35:VAL:O	2:B:39:THR:HG23	1.88	0.71
1:A:108:VAL:HB	1:A:221:HIS:CB	2.20	0.71
1:A:175:ASN:O	1:A:178:ILE:HG23	1.90	0.71
1:A:547:GLN:NE2	7:A:737:HOH:O	2.23	0.71
1:A:5:ILE:HG12	1:A:6:GLU:N	2.06	0.70
1:A:543:GLY:HA2	2:B:283:LEU:O	1.91	0.70
2:B:3:SER:CB	2:B:4:PRO:HD3	2.22	0.70
2:B:163:SER:O	2:B:167:ILE:HG13	1.91	0.69
2:B:2:ILE:HG13	2:B:5:ILE:HD13	1.72	0.69
2:B:72:ARG:NH2	2:B:151:GLN:OE1	2.25	0.69
1:A:284:ARG:HA	1:A:284:ARG:NE	2.08	0.69
1:A:542:ILE:CG2	2:B:283:LEU:HD13	2.22	0.69
2:B:61:PHE:CZ	2:B:74:LEU:HD23	2.28	0.68
1:A:27:THR:O	1:A:31:ILE:HG12	1.94	0.68
1:A:46:LYS:HD2	1:A:116:PHE:HB3	1.74	0.67
1:A:58:THR:HG23	1:A:76:ASP:O	1.94	0.67
1:A:131:THR:CG2	1:A:143:ARG:HH11	2.07	0.67
2:B:169:GLU:HG3	2:B:173:LYS:HE3	1.75	0.67
1:A:542:ILE:HD12	1:A:542:ILE:H	1.60	0.67
2:B:3:SER:HB3	2:B:4:PRO:HD3	1.76	0.67
1:A:131:THR:HG21	1:A:143:ARG:HG2	1.76	0.67
2:B:2:ILE:HG12	2:B:5:ILE:HD13	1.76	0.67
1:A:282:LEU:HD21	1:A:296:THR:HG22	1.76	0.67

Continued on next page...

Continued from previous page...

Atom-1	Atom-2	Interatomic distance (Å)	Clash overlap (Å)
2:B:88:TRP:CE3	2:B:88:TRP:HA	2.30	0.66
1:A:454:LYS:NZ	1:A:551:LEU:HD12	2.10	0.66
1:A:222:GLN:HB2	1:A:224:GLU:HG3	1.77	0.66
1:A:338:THR:HG22	1:A:353:LYS:HG2	1.75	0.66
1:A:362:THR:CG2	1:A:363:ASN:H	2.09	0.66
2:B:278:GLN:NE2	2:B:298:GLU:HG3	2.11	0.66
1:A:447:ASN:HD21	1:A:449:GLU:HB2	1.61	0.66
2:B:252:TRP:CZ3	2:B:260:LEU:HD22	2.28	0.66
1:A:465:LYS:HE3	1:A:488:ASP:OD2	1.96	0.66
1:A:542:ILE:CG2	1:A:543:GLY:H	1.99	0.66
2:B:90:VAL:C	2:B:92:LEU:N	2.45	0.65
1:A:38:CYS:HB3	1:A:144:TYR:CE1	2.32	0.65
2:B:330:GLN:HB3	2:B:423:VAL:HG12	1.79	0.64
2:B:249:LYS:HB2	2:B:252:TRP:NE1	2.12	0.64
1:A:202:ILE:O	1:A:206:ARG:HG3	1.97	0.64
2:B:175:ASN:OD1	2:B:201:LYS:HE2	1.97	0.64
2:B:287:LYS:NZ	2:B:293:ILE:HD11	2.13	0.64
1:A:140:PRO:HD2	7:A:686:HOH:O	1.98	0.64
1:A:206:ARG:HD2	1:A:220:LYS:NZ	2.13	0.64
1:A:169:GLU:HB3	1:A:170:PRO:HD3	1.80	0.63
2:B:314:VAL:HB	2:B:317:VAL:CG2	2.28	0.63
1:A:30:LYS:C	1:A:32:LYS:H	2.02	0.63
1:A:435:VAL:HB	2:B:290:THR:HG21	1.79	0.63
1:A:226:PRO:HB3	1:A:235:HIS:CE1	2.34	0.63
2:B:2:ILE:HG13	2:B:5:ILE:HG21	1.81	0.63
1:A:362:THR:CG2	1:A:363:ASN:N	2.62	0.63
1:A:442:VAL:HG13	1:A:481:ALA:CB	2.28	0.62
1:A:545:ASN:HA	1:A:548:VAL:HG23	1.80	0.62
2:B:242:GLN:NE2	2:B:353:LYS:HD3	2.14	0.62
1:A:254:VAL:HG22	1:A:293:ILE:HD11	1.81	0.62
1:A:413:GLU:HA	7:A:674:HOH:O	1.99	0.62
1:A:413:GLU:HG3	1:A:413:GLU:O	1.99	0.62
1:A:453:GLY:O	1:A:469:LEU:HD12	1.99	0.62
2:B:314:VAL:HB	2:B:317:VAL:HG23	1.81	0.62
2:B:135:ILE:CD1	6:B:502:GOL:H2	2.24	0.62
2:B:365:VAL:HG11	2:B:401:TRP:HB2	1.82	0.62
1:A:509:GLN:N	1:A:510:PRO:HD3	2.15	0.62
2:B:89:GLU:OE1	2:B:91:GLN:NE2	2.33	0.62
1:A:68:SER:O	1:A:69:THR:CG2	2.44	0.61
1:A:253:THR:HG22	1:A:256:ASP:CG	2.20	0.61
2:B:93:GLY:C	2:B:95:PRO:HD3	2.20	0.61

Continued on next page...

Continued from previous page...

Atom-1	Atom-2	Interatomic distance (Å)	Clash overlap (Å)
1:A:92:LEU:O	1:A:269:GLN:NE2	2.33	0.61
2:B:219:LYS:H	2:B:219:LYS:HD3	1.65	0.61
1:A:43:LYS:HE3	1:A:43:LYS:HA	1.82	0.61
2:B:330:GLN:NE2	2:B:338:THR:OG1	2.33	0.61
1:A:30:LYS:O	1:A:32:LYS:N	2.34	0.61
1:A:37:ILE:HD11	1:A:71:TRP:O	2.00	0.61
1:A:59:PRO:HG2	1:A:76:ASP:HB3	1.81	0.61
1:A:28:GLU:HA	1:A:135:ILE:CG1	2.31	0.60
1:A:67:ASP:O	1:A:67:ASP:OD1	2.19	0.60
1:A:363:ASN:OD1	1:A:365:VAL:HG12	2.01	0.60
1:A:131:THR:HG21	1:A:143:ARG:HH11	1.65	0.60
2:B:393:ILE:HD13	2:B:398:TRP:HB2	1.83	0.60
1:A:109:LEU:HD13	1:A:216:THR:HG21	1.83	0.60
1:A:221:HIS:CE1	1:A:228:LEU:N	2.61	0.60
1:A:362:THR:HG23	1:A:366:LYS:HD2	1.84	0.59
2:B:91:GLN:C	2:B:93:GLY:N	2.54	0.59
2:B:91:GLN:C	2:B:93:GLY:H	2.03	0.59
1:A:542:ILE:O	1:A:543:GLY:O	2.21	0.59
2:B:195:ILE:HD11	2:B:199:ARG:HD2	1.85	0.59
1:A:541:GLY:HA2	1:A:546:GLU:HB3	1.85	0.58
1:A:257:ILE:CD1	1:A:282:LEU:HD12	2.34	0.58
1:A:542:ILE:HD12	1:A:542:ILE:N	2.17	0.58
1:A:28:GLU:HA	1:A:135:ILE:HD11	1.85	0.58
1:A:31:ILE:O	1:A:31:ILE:HG22	2.03	0.58
1:A:452:LEU:CD2	1:A:470:THR:HG22	2.34	0.58
1:A:452:LEU:HD23	1:A:470:THR:HA	1.86	0.58
1:A:475:GLN:HB3	1:A:501:TYR:CE2	2.38	0.58
2:B:125:ARG:HD3	2:B:147:ASN:HA	1.84	0.57
1:A:447:ASN:ND2	1:A:450:THR:H	2.03	0.57
1:A:35:VAL:O	1:A:39:THR:HG23	2.04	0.57
1:A:222:GLN:HB3	1:A:224:GLU:HG3	1.86	0.57
1:A:206:ARG:HD2	1:A:220:LYS:HZ1	1.70	0.57
2:B:90:VAL:HG22	2:B:92:LEU:HB2	1.86	0.56
1:A:167:ILE:O	1:A:208:HIS:NE2	2.37	0.56
1:A:334:GLN:OE1	1:A:512:LYS:HE2	2.04	0.56
2:B:130:PHE:CZ	2:B:144:TYR:HB2	2.40	0.56
2:B:323:LYS:O	2:B:385:LYS:NZ	2.38	0.56
2:B:91:GLN:CG	2:B:161:GLN:HG2	2.35	0.56
2:B:427:TYR:CD1	2:B:427:TYR:C	2.78	0.56
1:A:183:TYR:O	1:A:184:MET:HB2	2.05	0.56
2:B:3:SER:CB	2:B:4:PRO:CD	2.83	0.56

Continued on next page...

Continued from previous page...

Atom-1	Atom-2	Interatomic distance (Å)	Clash overlap (Å)
1:A:164:MET:HE2	1:A:168:LEU:HG	1.88	0.56
2:B:361:HIS:HD2	2:B:362:THR:N	2.04	0.56
1:A:278:GLN:HG3	1:A:298:GLU:HB3	1.87	0.56
2:B:219:LYS:HD3	2:B:219:LYS:N	2.21	0.56
2:B:282:LEU:HD21	2:B:296:THR:CB	2.35	0.56
1:A:28:GLU:CA	1:A:135:ILE:HD11	2.36	0.55
1:A:407:GLN:NE2	2:B:419:THR:H	2.01	0.55
2:B:293:ILE:CG2	2:B:294:PRO:CD	2.82	0.55
1:A:30:LYS:C	1:A:32:LYS:N	2.60	0.55
2:B:156:SER:N	2:B:157:PRO:HD2	2.20	0.55
1:A:26:LEU:HB2	1:A:31:ILE:HD11	1.88	0.55
1:A:454:LYS:HZ1	1:A:551:LEU:HD12	1.70	0.55
1:A:540:LYS:NZ	2:B:277:ARG:HE	2.05	0.55
1:A:28:GLU:HA	1:A:135:ILE:HG13	1.89	0.55
1:A:49:LYS:HD2	1:A:49:LYS:C	2.28	0.55
2:B:89:GLU:CD	2:B:91:GLN:NE2	2.60	0.55
1:A:26:LEU:HB2	1:A:31:ILE:CD1	2.37	0.54
1:A:274:ILE:CD1	1:A:309:ILE:HG21	2.37	0.54
1:A:371:ALA:O	1:A:375:ILE:HD12	2.08	0.54
1:A:23:GLN:NE2	1:A:131:THR:O	2.40	0.54
2:B:90:VAL:O	2:B:90:VAL:HG13	2.07	0.54
1:A:284:ARG:HA	1:A:284:ARG:HE	1.71	0.54
1:A:328:GLU:HG3	1:A:390:LYS:HB2	1.89	0.54
1:A:31:ILE:HD12	1:A:133:PRO:HB2	1.88	0.54
2:B:88:TRP:HE3	2:B:90:VAL:HB	1.72	0.54
2:B:273:GLY:O	2:B:309:ILE:HG13	2.07	0.54
1:A:96:HIS:ND1	1:A:97:PRO:HD2	2.22	0.54
1:A:38:CYS:O	1:A:47:ILE:HD11	2.08	0.54
1:A:202:ILE:CG2	1:A:220:LYS:HZ1	2.21	0.54
1:A:412:PRO:O	1:A:414:TRP:HD1	1.91	0.54
2:B:275:LYS:HB2	2:B:302:GLU:OE1	2.08	0.54
1:A:20:LYS:HG2	1:A:55:PRO:O	2.07	0.53
1:A:357:MET:HG2	1:A:359:GLY:N	2.13	0.53
2:B:303:LEU:O	2:B:307:ARG:HB2	2.09	0.53
1:A:394:GLN:HG2	1:A:416:PHE:CE1	2.43	0.53
2:B:88:TRP:HA	2:B:88:TRP:HE3	1.73	0.53
1:A:229:TRP:CE2	1:A:230:MET:HG2	2.44	0.53
2:B:88:TRP:CE3	2:B:90:VAL:HB	2.44	0.53
1:A:114:ALA:HB1	1:A:160:PHE:CZ	2.44	0.53
1:A:228:LEU:CD2	1:A:233:GLU:HG2	2.39	0.53
1:A:254:VAL:HG22	1:A:293:ILE:CD1	2.38	0.53

Continued on next page...

Continued from previous page...

Atom-1	Atom-2	Interatomic distance (Å)	Clash overlap (Å)
1:A:447:ASN:ND2	1:A:449:GLU:HB2	2.24	0.53
2:B:23:GLN:OE1	2:B:60:VAL:HG12	2.09	0.53
1:A:308:GLU:O	1:A:311:LYS:HE2	2.09	0.53
1:A:171:PHE:CZ	1:A:205:LEU:HB2	2.44	0.52
1:A:344:GLU:OE1	1:A:347:LYS:HE3	2.09	0.52
1:A:111:VAL:HA	1:A:215:THR:O	2.08	0.52
1:A:28:GLU:HA	1:A:135:ILE:CD1	2.39	0.52
2:B:266:TRP:O	2:B:269:GLN:HG3	2.09	0.52
2:B:161:GLN:O	2:B:162:SER:C	2.46	0.52
1:A:544:GLY:HA2	2:B:285:GLY:O	2.10	0.52
2:B:8:VAL:O	2:B:10:VAL:HG23	2.10	0.52
2:B:323:LYS:HB2	2:B:343:GLN:NE2	2.25	0.51
1:A:131:THR:CG2	1:A:143:ARG:NH1	2.73	0.51
2:B:90:VAL:HG23	2:B:92:LEU:HG	1.91	0.51
1:A:286:THR:HG23	1:A:286:THR:O	2.11	0.51
1:A:368:LEU:O	1:A:372:VAL:HG23	2.10	0.51
1:A:493:VAL:HG22	1:A:494:ASN:N	2.25	0.51
1:A:195:ILE:HD11	1:A:199:ARG:CZ	2.41	0.51
2:B:245:VAL:C	2:B:246:LEU:HD23	2.31	0.51
2:B:274:ILE:HA	2:B:306:ASN:ND2	2.24	0.51
2:B:171:PHE:CZ	2:B:205:LEU:HB2	2.46	0.51
1:A:41:MET:HB3	1:A:47:ILE:HG12	1.93	0.51
2:B:3:SER:HB3	2:B:4:PRO:CD	2.40	0.51
2:B:44:GLU:CB	2:B:46:LYS:HE3	2.41	0.51
2:B:94:ILE:HG23	2:B:94:ILE:O	2.10	0.50
1:A:134:SER:HB3	1:A:139:THR:HG23	1.94	0.50
2:B:195:ILE:HG23	2:B:196:GLY:H	1.75	0.50
1:A:116:PHE:HD1	1:A:148:VAL:HG21	1.77	0.50
1:A:222:GLN:O	1:A:224:GLU:HG3	2.12	0.50
1:A:478:GLU:HG3	1:A:499:SER:HB2	1.92	0.50
2:B:44:GLU:HB2	2:B:46:LYS:HE3	1.93	0.50
1:A:54:ASN:HB3	1:A:143:ARG:HH21	1.77	0.50
1:A:60:VAL:HG21	1:A:130:PHE:HD1	1.77	0.50
1:A:393:ILE:HB	1:A:423:VAL:CG2	2.42	0.50
1:A:90:VAL:O	1:A:90:VAL:HG13	2.11	0.50
2:B:315:HIS:HA	7:B:582:HOH:O	2.12	0.49
2:B:246:LEU:HD21	2:B:310:LEU:HD11	1.93	0.49
1:A:264:LEU:HD22	1:A:306:ASN:HD22	1.77	0.49
1:A:518:VAL:O	1:A:522:ILE:HG13	2.13	0.49
2:B:396:GLU:CD	2:B:396:GLU:H	2.15	0.49
1:A:309:ILE:O	1:A:312:GLU:HG2	2.11	0.49

Continued on next page...

Continued from previous page...

Atom-1	Atom-2	Interatomic distance (Å)	Clash overlap (Å)
1:A:31:ILE:O	1:A:35:VAL:HG23	2.12	0.49
1:A:125:ARG:NH1	1:A:147:ASN:CB	2.75	0.49
2:B:420:PRO:CB	2:B:421:PRO:HD2	2.19	0.49
1:A:195:ILE:HD11	1:A:199:ARG:NE	2.28	0.49
2:B:308:GLU:O	2:B:310:LEU:N	2.46	0.49
1:A:271:TYR:HE2	1:A:312:GLU:HG3	1.78	0.49
2:B:376:THR:HG21	2:B:410:TRP:CZ3	2.46	0.49
1:A:31:ILE:HB	1:A:135:ILE:HG12	1.94	0.49
2:B:278:GLN:NE2	2:B:298:GLU:CG	2.76	0.49
1:A:91:GLN:O	1:A:93:GLY:N	2.45	0.48
1:A:449:GLU:O	1:A:451:LYS:N	2.46	0.48
7:A:628:HOH:O	2:B:52:PRO:HD3	2.12	0.48
2:B:90:VAL:O	2:B:90:VAL:HG22	2.12	0.48
1:A:404:GLU:CD	1:A:428:GLN:HE22	2.17	0.48
1:A:179:VAL:HG12	1:A:190:GLY:O	2.12	0.48
1:A:257:ILE:HD13	1:A:282:LEU:HD12	1.95	0.48
2:B:332:GLN:HG3	2:B:338:THR:HG23	1.94	0.48
1:A:278:GLN:CG	1:A:298:GLU:HB3	2.44	0.48
1:A:237:ASP:HB2	7:A:698:HOH:O	2.13	0.48
1:A:486:LEU:HB3	1:A:524:GLN:HG2	1.95	0.48
2:B:366:LYS:O	2:B:370:GLU:HG3	2.14	0.48
2:B:142:ILE:H	2:B:142:ILE:HD12	1.79	0.47
1:A:57:ASN:HA	1:A:129:ALA:O	2.15	0.47
2:B:2:ILE:CD1	2:B:5:ILE:HD13	2.44	0.47
2:B:380:ILE:O	2:B:384:GLY:N	2.43	0.47
1:A:284:ARG:HE	1:A:284:ARG:CA	2.28	0.47
2:B:64:LYS:HE3	2:B:71:TRP:CZ2	2.49	0.47
1:A:393:ILE:HG23	1:A:414:TRP:CH2	2.50	0.47
1:A:447:ASN:ND2	1:A:450:THR:N	2.62	0.47
2:B:93:GLY:O	2:B:95:PRO:HD3	2.14	0.47
1:A:473:THR:O	1:A:477:THR:HG23	2.14	0.47
2:B:91:GLN:NE2	2:B:161:GLN:HB3	2.30	0.47
2:B:277:ARG:HA	2:B:277:ARG:HD3	1.47	0.47
1:A:30:LYS:HA	1:A:33:ALA:HB3	1.95	0.47
1:A:85:GLN:C	1:A:154:LYS:HZ3	2.15	0.47
1:A:327:ALA:HA	1:A:340:GLN:O	2.15	0.47
2:B:91:GLN:O	2:B:93:GLY:N	2.48	0.47
1:A:412:PRO:HG3	2:B:401:TRP:CH2	2.50	0.47
1:A:457:TYR:OH	1:A:465:LYS:HD2	2.15	0.47
1:A:328:GLU:HG3	1:A:390:LYS:CB	2.44	0.47
1:A:408:ALA:HB1	2:B:364:ASP:HB3	1.96	0.47

Continued on next page...

Continued from previous page...

Atom-1	Atom-2	Interatomic distance (Å)	Clash overlap (Å)
1:A:457:TYR:O	1:A:458:VAL:HG23	2.14	0.47
2:B:330:GLN:NE2	2:B:338:THR:O	2.48	0.47
2:B:175:ASN:HD21	2:B:201:LYS:NZ	2.13	0.47
1:A:156:SER:N	1:A:157:PRO:HD2	2.29	0.46
1:A:151:GLN:HE22	5:A:601:ATP:H4'	1.78	0.46
2:B:305:GLU:O	2:B:309:ILE:HG12	2.16	0.46
1:A:279:LEU:HD23	1:A:299:ALA:HB1	1.98	0.46
2:B:266:TRP:CD2	2:B:425:LEU:HD13	2.51	0.46
1:A:278:GLN:O	1:A:299:ALA:HB2	2.16	0.46
2:B:64:LYS:HE3	2:B:71:TRP:CE2	2.51	0.46
1:A:458:VAL:HG12	2:B:286:THR:HG21	1.98	0.46
2:B:57:ASN:HA	2:B:129:ALA:O	2.15	0.46
1:A:356:ARG:HG3	1:A:357:MET:N	2.30	0.46
1:A:418:ASN:O	1:A:420:PRO:HD3	2.16	0.46
2:B:332:GLN:CG	2:B:338:THR:HG23	2.46	0.46
2:B:219:LYS:H	2:B:219:LYS:CD	2.28	0.46
1:A:164:MET:CE	1:A:168:LEU:HG	2.46	0.46
1:A:433:PRO:HD3	2:B:255:ASN:OD1	2.16	0.46
2:B:66:LYS:HD3	2:B:407:GLN:NE2	2.31	0.46
2:B:150:PRO:HG2	2:B:153:TRP:CB	2.46	0.46
2:B:361:HIS:CD2	2:B:362:THR:N	2.83	0.46
1:A:357:MET:HG2	1:A:358:ARG:N	2.31	0.45
2:B:35:VAL:O	2:B:39:THR:CG2	2.59	0.45
2:B:162:SER:O	2:B:165:THR:HB	2.16	0.45
1:A:279:LEU:HG	1:A:302:GLU:OE1	2.16	0.45
1:A:540:LYS:HB3	1:A:542:ILE:HD11	1.99	0.45
1:A:503:LEU:HD12	1:A:533:LEU:HD23	1.98	0.45
2:B:17:ASP:O	2:B:83:ARG:HD3	2.17	0.45
2:B:239:TRP:CH2	2:B:378:GLU:HA	2.51	0.45
2:B:89:GLU:CD	2:B:91:GLN:HE21	2.20	0.45
2:B:300:GLU:O	2:B:304:ALA:CB	2.64	0.45
1:A:3:SER:OG	1:A:5:ILE:HG22	2.17	0.45
1:A:56:TYR:O	1:A:143:ARG:NH2	2.39	0.45
1:A:225:PRO:HA	1:A:226:PRO:C	2.35	0.45
1:A:254:VAL:HG21	1:A:288:ALA:O	2.16	0.45
1:A:543:GLY:O	1:A:545:ASN:N	2.50	0.45
1:A:376:THR:HG21	2:B:401:TRP:CH2	2.51	0.45
2:B:38:CYS:SG	2:B:132:ILE:HD11	2.56	0.45
1:A:284:ARG:NE	1:A:284:ARG:CA	2.78	0.45
1:A:372:VAL:HG11	1:A:412:PRO:HD2	1.99	0.45
1:A:449:GLU:O	1:A:451:LYS:HG3	2.17	0.45

Continued on next page...

Continued from previous page...

Atom-1	Atom-2	Interatomic distance (Å)	Clash overlap (Å)
1:A:546:GLU:HG3	1:A:547:GLN:HG3	1.98	0.45
1:A:163:SER:O	1:A:167:ILE:HG13	2.17	0.45
1:A:356:ARG:HG3	1:A:356:ARG:HH11	1.82	0.44
1:A:396:GLU:OE2	1:A:396:GLU:N	2.47	0.44
2:B:314:VAL:HB	2:B:317:VAL:HG21	1.99	0.44
1:A:73:LYS:HE2	1:A:73:LYS:HB3	1.83	0.44
1:A:125:ARG:HH11	1:A:147:ASN:CB	2.29	0.44
2:B:116:PHE:CZ	2:B:151:GLN:HG3	2.52	0.44
1:A:439:THR:HG22	1:A:441:TYR:CE1	2.53	0.44
2:B:266:TRP:CG	2:B:425:LEU:HD13	2.53	0.44
2:B:354:TYR:CE1	2:B:356:ARG:HD2	2.52	0.44
1:A:68:SER:O	1:A:68:SER:OG	2.31	0.44
1:A:473:THR:O	1:A:474:ASN:C	2.55	0.44
1:A:10:VAL:HG12	1:A:11:LYS:N	2.32	0.44
1:A:493:VAL:CG2	1:A:494:ASN:N	2.80	0.44
2:B:317:VAL:HG22	2:B:347:LYS:HB3	1.99	0.44
1:A:193:LEU:HD11	1:A:201:LYS:HD2	2.00	0.44
1:A:202:ILE:HG21	1:A:220:LYS:HZ1	1.83	0.44
1:A:229:TRP:CD2	1:A:230:MET:HG2	2.53	0.44
1:A:515:SER:OG	1:A:518:VAL:HG23	2.17	0.44
1:A:544:GLY:O	1:A:548:VAL:HG23	2.18	0.44
2:B:79:GLU:HB2	7:B:568:HOH:O	2.18	0.44
2:B:129:ALA:HA	2:B:144:TYR:O	2.16	0.44
1:A:175:ASN:HB3	1:A:178:ILE:CG2	2.47	0.44
1:A:194:GLU:O	1:A:195:ILE:C	2.56	0.44
1:A:194:GLU:O	1:A:196:GLY:N	2.50	0.44
2:B:244:ILE:HG22	2:B:310:LEU:HD13	2.00	0.44
2:B:297:GLU:C	2:B:298:GLU:CG	2.67	0.44
2:B:302:GLU:OE1	2:B:302:GLU:HA	2.18	0.44
2:B:342:TYR:HB3	2:B:348:ASN:HA	2.00	0.44
1:A:254:VAL:O	1:A:258:GLN:HB2	2.18	0.44
1:A:257:ILE:HG23	1:A:283:LEU:HD21	1.99	0.44
2:B:239:TRP:CZ3	2:B:378:GLU:HG2	2.53	0.44
1:A:135:ILE:HG22	1:A:136:ASN:N	2.33	0.43
1:A:221:HIS:O	1:A:223:LYS:N	2.51	0.43
2:B:100:LEU:HA	2:B:103:ASN:HD22	1.82	0.43
2:B:287:LYS:HZ3	2:B:293:ILE:HD11	1.83	0.43
1:A:330:GLN:NE2	1:A:338:THR:OG1	2.50	0.43
1:A:272:PRO:HB3	7:A:615:HOH:O	2.19	0.43
1:A:357:MET:CG	1:A:358:ARG:N	2.81	0.43
1:A:453:GLY:C	1:A:469:LEU:HD12	2.39	0.43

Continued on next page...

Continued from previous page...

Atom-1	Atom-2	Interatomic distance (Å)	Clash overlap (Å)
2:B:161:GLN:O	2:B:164:MET:N	2.51	0.43
2:B:195:ILE:HG23	2:B:196:GLY:N	2.34	0.43
1:A:76:ASP:HB2	1:A:289:LEU:HD22	2.01	0.43
1:A:491:LEU:HB3	1:A:529:GLU:HG3	1.99	0.43
1:A:543:GLY:C	1:A:545:ASN:N	2.70	0.43
2:B:65:LYS:HZ3	2:B:110:ASP:HB2	1.82	0.43
2:B:91:GLN:OE1	2:B:161:GLN:HG2	2.17	0.43
1:A:457:TYR:CZ	1:A:465:LYS:HD2	2.54	0.43
1:A:467:VAL:HA	1:A:468:PRO:HD3	1.80	0.43
1:A:468:PRO:C	1:A:469:LEU:HG	2.39	0.43
1:A:545:ASN:CA	1:A:548:VAL:HG23	2.46	0.43
2:B:67:ASP:OD1	2:B:67:ASP:O	2.36	0.43
2:B:170:PRO:O	2:B:173:LYS:HB2	2.18	0.43
1:A:274:ILE:HD11	1:A:309:ILE:HG21	2.00	0.43
1:A:330:GLN:CD	1:A:340:GLN:HE22	2.22	0.43
1:A:356:ARG:HD2	1:A:367:GLN:NE2	2.34	0.43
2:B:13:LYS:HB2	2:B:16:MET:SD	2.59	0.43
2:B:418:ASN:O	2:B:420:PRO:HD3	2.19	0.43
1:A:116:PHE:HD1	1:A:148:VAL:CG2	2.30	0.43
1:A:547:GLN:C	1:A:549:ASP:H	2.22	0.43
2:B:373:GLN:HG3	2:B:406:TRP:CH2	2.54	0.43
1:A:5:ILE:HG12	1:A:6:GLU:H	1.78	0.42
1:A:108:VAL:O	1:A:221:HIS:HB2	2.18	0.42
1:A:134:SER:HB3	1:A:139:THR:CG2	2.48	0.42
1:A:253:THR:HG22	1:A:256:ASP:OD2	2.18	0.42
1:A:324:ASP:OD2	1:A:388:LYS:HD2	2.19	0.42
2:B:91:GLN:O	2:B:94:ILE:N	2.48	0.42
2:B:420:PRO:CB	2:B:421:PRO:CD	2.84	0.42
2:B:423:VAL:HG23	2:B:424:LYS:N	2.34	0.42
1:A:239:TRP:CZ3	1:A:314:VAL:HG12	2.55	0.42
2:B:24:TRP:CH2	2:B:61:PHE:CD2	3.07	0.42
2:B:156:SER:N	2:B:157:PRO:CD	2.82	0.42
2:B:242:GLN:HG3	2:B:353:LYS:HB2	2.01	0.42
2:B:116:PHE:CE2	2:B:151:GLN:HG3	2.54	0.42
1:A:149:LEU:HA	1:A:150:PRO:HD3	1.88	0.42
1:A:21:VAL:CG1	1:A:59:PRO:HD3	2.50	0.42
1:A:194:GLU:CD	1:A:194:GLU:H	2.22	0.42
1:A:538:ALA:HB1	1:A:539:HIS:HD2	1.84	0.42
1:A:109:LEU:HB3	1:A:216:THR:HG22	2.02	0.42
1:A:357:MET:CE	1:A:359:GLY:HA3	2.50	0.42
2:B:175:ASN:OD1	2:B:201:LYS:CE	2.67	0.42

Continued on next page...

Continued from previous page...

Atom-1	Atom-2	Interatomic distance (Å)	Clash overlap (Å)
1:A:244:ILE:HG12	1:A:266:TRP:HZ3	1.84	0.42
1:A:454:LYS:HZ2	1:A:551:LEU:HD12	1.82	0.42
2:B:287:LYS:CD	2:B:293:ILE:HD11	2.50	0.42
2:B:374:LYS:HD2	2:B:374:LYS:C	2.40	0.42
1:A:135:ILE:C	1:A:137:ASN:H	2.21	0.42
1:A:215:THR:O	1:A:217:PRO:HD3	2.20	0.42
1:A:542:ILE:CG2	1:A:543:GLY:N	2.69	0.42
2:B:293:ILE:CG2	2:B:294:PRO:HD2	2.16	0.42
1:A:515:SER:HB2	7:A:649:HOH:O	2.19	0.42
2:B:2:ILE:HG23	2:B:118:VAL:HG22	2.01	0.42
2:B:24:TRP:CZ3	2:B:403:THR:HG21	2.55	0.42
2:B:246:LEU:HD23	2:B:246:LEU:N	2.35	0.42
1:A:91:GLN:H	1:A:91:GLN:HG3	1.19	0.42
2:B:411:ILE:H	6:B:501:GOL:H2	1.85	0.42
1:A:60:VAL:HG12	1:A:61:PHE:N	2.35	0.41
1:A:78:ARG:HD3	1:A:258:GLN:HE22	1.85	0.41
1:A:397:THR:O	1:A:400:THR:HB	2.20	0.41
2:B:90:VAL:HG23	2:B:92:LEU:CG	2.50	0.41
1:A:30:LYS:O	1:A:33:ALA:N	2.53	0.41
1:A:254:VAL:HG23	1:A:291:GLU:O	2.20	0.41
1:A:383:TRP:O	1:A:385:LYS:HE3	2.21	0.41
1:A:452:LEU:HD21	1:A:470:THR:HG22	2.01	0.41
2:B:187:LEU:HD23	2:B:187:LEU:HA	1.87	0.41
1:A:199:ARG:O	1:A:203:GLU:HG2	2.20	0.41
1:A:412:PRO:HG3	2:B:401:TRP:CZ2	2.54	0.41
1:A:435:VAL:CB	2:B:290:THR:HG21	2.47	0.41
1:A:23:GLN:HG3	1:A:24:TRP:N	2.34	0.41
1:A:458:VAL:HG22	1:A:464:GLN:CG	2.41	0.41
1:A:520:GLN:O	1:A:523:GLU:HG2	2.20	0.41
2:B:89:GLU:OE2	2:B:91:GLN:NE2	2.54	0.41
1:A:107:THR:HG22	1:A:108:VAL:N	2.35	0.41
1:A:405:TYR:CE2	1:A:407:GLN:HB2	2.55	0.41
1:A:278:GLN:HE21	1:A:278:GLN:HA	1.85	0.41
1:A:27:THR:HG22	1:A:28:GLU:N	2.35	0.41
1:A:28:GLU:N	1:A:135:ILE:HD11	2.36	0.41
1:A:457:TYR:CZ	1:A:465:LYS:HB3	2.55	0.41
1:A:503:LEU:HD11	1:A:507:GLN:HE21	1.85	0.41
1:A:202:ILE:HG21	1:A:220:LYS:NZ	2.36	0.41
1:A:448:ARG:NH1	7:A:755:HOH:O	2.47	0.41
1:A:235:HIS:HB2	1:A:238:LYS:O	2.20	0.41
1:A:414:TRP:CD1	1:A:414:TRP:N	2.88	0.41

Continued on next page...

Continued from previous page...

Atom-1	Atom-2	Interatomic distance (Å)	Clash overlap (Å)
2:B:278:GLN:HB2	2:B:302:GLU:CG	2.51	0.41
1:A:385:LYS:HE2	1:A:385:LYS:HB3	1.77	0.41
1:A:417:VAL:HG23	1:A:417:VAL:O	2.20	0.41
2:B:169:GLU:HB3	2:B:170:PRO:HD3	2.03	0.41
1:A:208:HIS:O	1:A:212:TRP:HD1	2.03	0.40
1:A:239:TRP:HZ3	1:A:314:VAL:HG12	1.86	0.40
1:A:320:ASP:HA	1:A:321:PRO:HD2	1.91	0.40
2:B:198:HIS:C	2:B:200:THR:H	2.25	0.40
1:A:460:ASN:HA	2:B:286:THR:O	2.22	0.40
1:A:228:LEU:HD23	1:A:233:GLU:HG2	2.02	0.40
2:B:90:VAL:CG2	2:B:92:LEU:HG	2.51	0.40
2:B:297:GLU:O	2:B:298:GLU:CG	2.63	0.40
2:B:344:GLU:HB3	2:B:347:LYS:NZ	2.36	0.40
2:B:402:TRP:CE2	2:B:403:THR:HG22	2.56	0.40
2:B:195:ILE:O	2:B:198:HIS:HB3	2.22	0.40
1:A:49:LYS:O	1:A:50:ILE:HG23	2.22	0.40
1:A:459:THR:OG1	1:A:463:ARG:HB3	2.22	0.40
2:B:241:VAL:HG12	2:B:242:GLN:N	2.37	0.40

There are no symmetry-related clashes.

5.3 Torsion angles [i](#)

5.3.1 Protein backbone [i](#)

In the following table, the Percentiles column shows the percent Ramachandran outliers of the chain as a percentile score with respect to all X-ray entries followed by that with respect to entries of similar resolution.

The Analysed column shows the number of residues for which the backbone conformation was analysed, and the total number of residues.

Mol	Chain	Analysed	Favoured	Allowed	Outliers	Percentiles	
1	A	549/560 (98%)	483 (88%)	53 (10%)	13 (2%)	6	9
2	B	411/447 (92%)	356 (87%)	46 (11%)	9 (2%)	6	10
All	All	960/1007 (95%)	839 (87%)	99 (10%)	22 (2%)	6	10

All (22) Ramachandran outliers are listed below:

Mol	Chain	Res	Type
1	A	222	GLN
1	A	543	GLY
2	B	91	GLN
1	A	31	ILE
1	A	195	ILE
1	A	450	THR
2	B	65	LYS
2	B	67	ASP
2	B	116	PHE
2	B	309	ILE
1	A	52	PRO
1	A	66	LYS
2	B	3	SER
2	B	314	VAL
2	B	420	PRO
1	A	91	GLN
1	A	133	PRO
1	A	184	MET
1	A	542	ILE
1	A	218	ASP
1	A	310	LEU
2	B	291	GLU

5.3.2 Protein sidechains [i](#)

In the following table, the Percentiles column shows the percent sidechain outliers of the chain as a percentile score with respect to all X-ray entries followed by that with respect to entries of similar resolution.

The Analysed column shows the number of residues for which the sidechain conformation was analysed, and the total number of residues.

Mol	Chain	Analysed	Rotameric	Outliers	Percentiles	
1	A	479/500 (96%)	453 (95%)	26 (5%)	22	42
2	B	371/404 (92%)	348 (94%)	23 (6%)	18	35
All	All	850/904 (94%)	801 (94%)	49 (6%)	20	38

All (49) residues with a non-rotameric sidechain are listed below:

Mol	Chain	Res	Type
1	A	23	GLN
1	A	49	LYS

Continued on next page...

Continued from previous page...

Mol	Chain	Res	Type
1	A	53	GLU
1	A	91	GLN
1	A	135	ILE
1	A	136	ASN
1	A	137	ASN
1	A	174	GLN
1	A	178	ILE
1	A	194	GLU
1	A	195	ILE
1	A	211	ARG
1	A	216	THR
1	A	219	LYS
1	A	221	HIS
1	A	222	GLN
1	A	253	THR
1	A	296	THR
1	A	330	GLN
1	A	336	GLN
1	A	356	ARG
1	A	385	LYS
1	A	413	GLU
1	A	418	ASN
1	A	469	LEU
1	A	499	SER
2	B	24	TRP
2	B	39	THR
2	B	48	SER
2	B	61	PHE
2	B	89	GLU
2	B	113	ASP
2	B	200	THR
2	B	219	LYS
2	B	238	LYS
2	B	242	GLN
2	B	246	LEU
2	B	268	SER
2	B	271	TYR
2	B	277	ARG
2	B	281	LYS
2	B	290	THR
2	B	293	ILE
2	B	298	GLU

Continued on next page...

Continued from previous page...

Mol	Chain	Res	Type
2	B	300	GLU
2	B	303	LEU
2	B	330	GLN
2	B	374	LYS
2	B	427	TYR

Sometimes sidechains can be flipped to improve hydrogen bonding and reduce clashes. All (32) such sidechains are listed below:

Mol	Chain	Res	Type
1	A	23	GLN
1	A	91	GLN
1	A	137	ASN
1	A	147	ASN
1	A	151	GLN
1	A	161	GLN
1	A	174	GLN
1	A	221	HIS
1	A	235	HIS
1	A	278	GLN
1	A	306	ASN
1	A	330	GLN
1	A	340	GLN
1	A	373	GLN
1	A	407	GLN
1	A	428	GLN
1	A	447	ASN
1	A	475	GLN
1	A	507	GLN
1	A	509	GLN
1	A	519	ASN
1	A	539	HIS
2	B	91	GLN
2	B	103	ASN
2	B	182	GLN
2	B	242	GLN
2	B	258	GLN
2	B	278	GLN
2	B	330	GLN
2	B	340	GLN
2	B	361	HIS
2	B	407	GLN

5.3.3 RNA [i](#)

There are no RNA molecules in this entry.

5.4 Non-standard residues in protein, DNA, RNA chains [i](#)

There are no non-standard protein/DNA/RNA residues in this entry.

5.5 Carbohydrates [i](#)

There are no monosaccharides in this entry.

5.6 Ligand geometry [i](#)

Of 7 ligands modelled in this entry, 4 are monoatomic - leaving 3 for Mogul analysis.

In the following table, the Counts columns list the number of bonds (or angles) for which Mogul statistics could be retrieved, the number of bonds (or angles) that are observed in the model and the number of bonds (or angles) that are defined in the Chemical Component Dictionary. The Link column lists molecule types, if any, to which the group is linked. The Z score for a bond length (or angle) is the number of standard deviations the observed value is removed from the expected value. A bond length (or angle) with $|Z| > 2$ is considered an outlier worth inspection. RMSZ is the root-mean-square of all Z scores of the bond lengths (or angles).

Mol	Type	Chain	Res	Link	Bond lengths			Bond angles		
					Counts	RMSZ	# Z > 2	Counts	RMSZ	# Z > 2
6	GOL	B	501	-	5,5,5	0.39	0	5,5,5	0.20	0
6	GOL	B	502	-	5,5,5	0.78	0	5,5,5	0.38	0
5	ATP	A	601	3	26,33,33	1.59	6 (23%)	31,52,52	1.16	3 (9%)

In the following table, the Chirals column lists the number of chiral outliers, the number of chiral centers analysed, the number of these observed in the model and the number defined in the Chemical Component Dictionary. Similar counts are reported in the Torsion and Rings columns. '-' means no outliers of that kind were identified.

Mol	Type	Chain	Res	Link	Chirals	Torsions	Rings
6	GOL	B	501	-	-	3/4/4/4	-
6	GOL	B	502	-	-	4/4/4/4	-
5	ATP	A	601	3	-	6/18/38/38	0/3/3/3

All (6) bond length outliers are listed below:

Mol	Chain	Res	Type	Atoms	Z	Observed(Å)	Ideal(Å)
5	A	601	ATP	C4-N3	3.99	1.41	1.35
5	A	601	ATP	C2-N1	3.25	1.40	1.33
5	A	601	ATP	O4'-C1'	3.00	1.45	1.41
5	A	601	ATP	C2-N3	2.79	1.36	1.32
5	A	601	ATP	C5'-C4'	-2.54	1.43	1.51
5	A	601	ATP	C8-N7	-2.35	1.30	1.34

All (3) bond angle outliers are listed below:

Mol	Chain	Res	Type	Atoms	Z	Observed(°)	Ideal(°)
5	A	601	ATP	O5'-C5'-C4'	2.31	116.94	108.99
5	A	601	ATP	O4'-C4'-C3'	-2.10	100.97	105.11
5	A	601	ATP	O4'-C1'-C2'	-2.06	103.92	106.93

There are no chirality outliers.

All (13) torsion outliers are listed below:

Mol	Chain	Res	Type	Atoms
5	A	601	ATP	C5'-O5'-PA-O1A
6	B	501	GOL	C1-C2-C3-O3
6	B	502	GOL	C1-C2-C3-O3
6	B	502	GOL	O1-C1-C2-C3
6	B	501	GOL	O2-C2-C3-O3
6	B	502	GOL	O1-C1-C2-O2
5	A	601	ATP	PG-O3B-PB-O3A
6	B	502	GOL	O2-C2-C3-O3
5	A	601	ATP	C5'-O5'-PA-O3A
5	A	601	ATP	PA-O3A-PB-O2B
5	A	601	ATP	C5'-O5'-PA-O2A
5	A	601	ATP	PA-O3A-PB-O1B
6	B	501	GOL	O1-C1-C2-O2

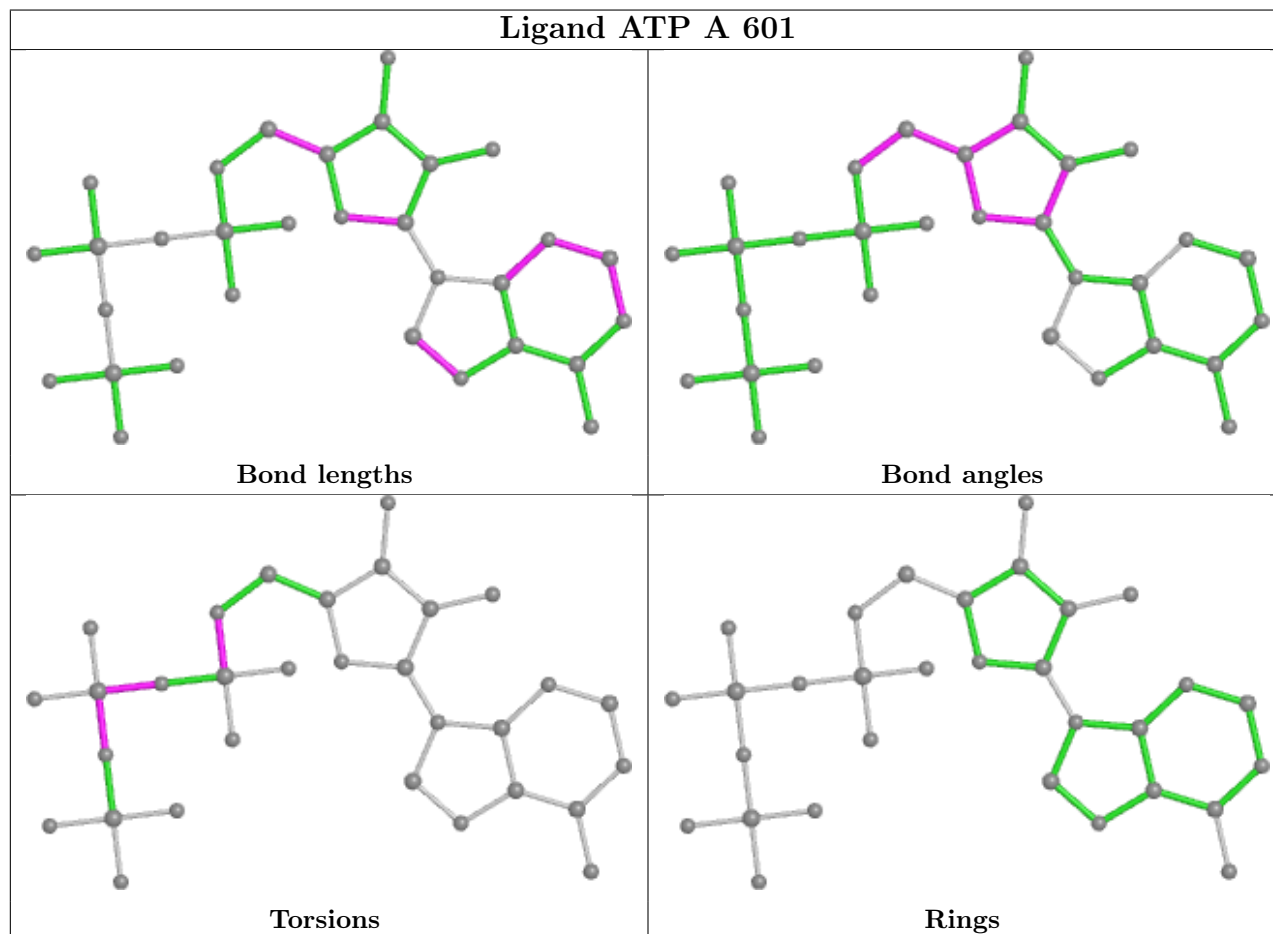
There are no ring outliers.

3 monomers are involved in 4 short contacts:

Mol	Chain	Res	Type	Clashes	Symm-Clashes
6	B	501	GOL	1	0
6	B	502	GOL	2	0
5	A	601	ATP	1	0

The following is a two-dimensional graphical depiction of Mogul quality analysis of bond lengths, bond angles, torsion angles, and ring geometry for all instances of the Ligand of Interest. In

addition, ligands with molecular weight > 250 and outliers as shown on the validation Tables will also be included. For torsion angles, if less than 5% of the Mogul distribution of torsion angles is within 10 degrees of the torsion angle in question, then that torsion angle is considered an outlier. Any bond that is central to one or more torsion angles identified as an outlier by Mogul will be highlighted in the graph. For rings, the root-mean-square deviation (RMSD) between the ring in question and similar rings identified by Mogul is calculated over all ring torsion angles. If the average RMSD is greater than 60 degrees and the minimal RMSD between the ring in question and any Mogul-identified rings is also greater than 60 degrees, then that ring is considered an outlier. The outliers are highlighted in purple. The color gray indicates Mogul did not find sufficient equivalents in the CSD to analyse the geometry.



5.7 Other polymers [i](#)

There are no such residues in this entry.

5.8 Polymer linkage issues [i](#)

There are no chain breaks in this entry.

6 Fit of model and data

6.1 Protein, DNA and RNA chains

In the following table, the column labelled ‘#RSRZ > 2’ contains the number (and percentage) of RSRZ outliers, followed by percent RSRZ outliers for the chain as percentile scores relative to all X-ray entries and entries of similar resolution. The OWAB column contains the minimum, median, 95th percentile and maximum values of the occupancy-weighted average B-factor per residue. The column labelled ‘Q < 0.9’ lists the number of (and percentage) of residues with an average occupancy less than 0.9.

Mol	Chain	Analysed	<RSRZ>	#RSRZ>2	OWAB(Å ²)	Q<0.9
1	A	551/560 (98%)	0.63	49 (8%) 9 9	29, 73, 107, 113	0
2	B	415/447 (92%)	0.61	32 (7%) 13 13	30, 65, 108, 113	0
All	All	966/1007 (95%)	0.63	81 (8%) 11 11	29, 71, 108, 113	0

All (81) RSRZ outliers are listed below:

Mol	Chain	Res	Type	RSRZ
2	B	1	PRO	14.5
2	B	2	ILE	14.1
2	B	3	SER	10.1
1	A	71	TRP	7.8
1	A	34	LEU	6.1
2	B	93	GLY	5.8
1	A	135	ILE	5.5
1	A	67	ASP	5.3
2	B	360	ALA	5.0
2	B	315	HIS	4.9
1	A	251	SER	4.8
1	A	64	LYS	4.8
1	A	37	ILE	4.6
2	B	303	LEU	4.5
1	A	144	TYR	4.5
1	A	301	LEU	4.3
1	A	26	LEU	4.3
1	A	278	GLN	4.3
2	B	279	LEU	4.2
2	B	245	VAL	4.1
1	A	252	TRP	4.0
2	B	244	ILE	4.0
1	A	254	VAL	4.0
1	A	70	LYS	3.8

Continued on next page...

Continued from previous page...

Mol	Chain	Res	Type	RSRZ
1	A	223	LYS	3.7
1	A	68	SER	3.7
1	A	38	CYS	3.5
1	A	69	THR	3.4
1	A	142	ILE	3.4
2	B	294	PRO	3.3
1	A	346	PHE	3.3
1	A	132	ILE	3.2
1	A	1	PRO	3.2
1	A	33	ALA	3.2
1	A	62	ALA	3.1
1	A	296	THR	3.1
2	B	359	GLY	3.0
2	B	88	TRP	3.0
2	B	274	ILE	3.0
2	B	358	ARG	3.0
1	A	295	LEU	3.0
1	A	551	LEU	3.0
2	B	252	TRP	3.0
2	B	301	LEU	2.9
2	B	426	TRP	2.9
1	A	542	ILE	2.9
2	B	214	LEU	2.8
2	B	69	THR	2.8
1	A	257	ILE	2.8
2	B	260	LEU	2.7
1	A	548	VAL	2.7
2	B	296	THR	2.7
1	A	63	ILE	2.7
2	B	4	PRO	2.7
1	A	65	LYS	2.6
1	A	35	VAL	2.6
1	A	298	GLU	2.4
2	B	282	LEU	2.4
1	A	24	TRP	2.4
1	A	442	VAL	2.3
2	B	361	HIS	2.3
1	A	30	LYS	2.3
1	A	140	PRO	2.3
1	A	22	LYS	2.3
1	A	434	ILE	2.2
2	B	264	LEU	2.2

Continued on next page...

Continued from previous page...

Mol	Chain	Res	Type	RSRZ
1	A	59	PRO	2.2
2	B	312	GLU	2.2
2	B	271	TYR	2.1
1	A	94	ILE	2.1
2	B	248	GLU	2.1
1	A	550	LYS	2.1
1	A	177	ASP	2.1
2	B	293	ILE	2.1
1	A	209	LEU	2.1
2	B	283	LEU	2.1
2	B	375	ILE	2.1
1	A	136	ASN	2.1
1	A	506	ILE	2.1
1	A	193	LEU	2.0
1	A	293	ILE	2.0

6.2 Non-standard residues in protein, DNA, RNA chains [i](#)

There are no non-standard protein/DNA/RNA residues in this entry.

6.3 Carbohydrates [i](#)

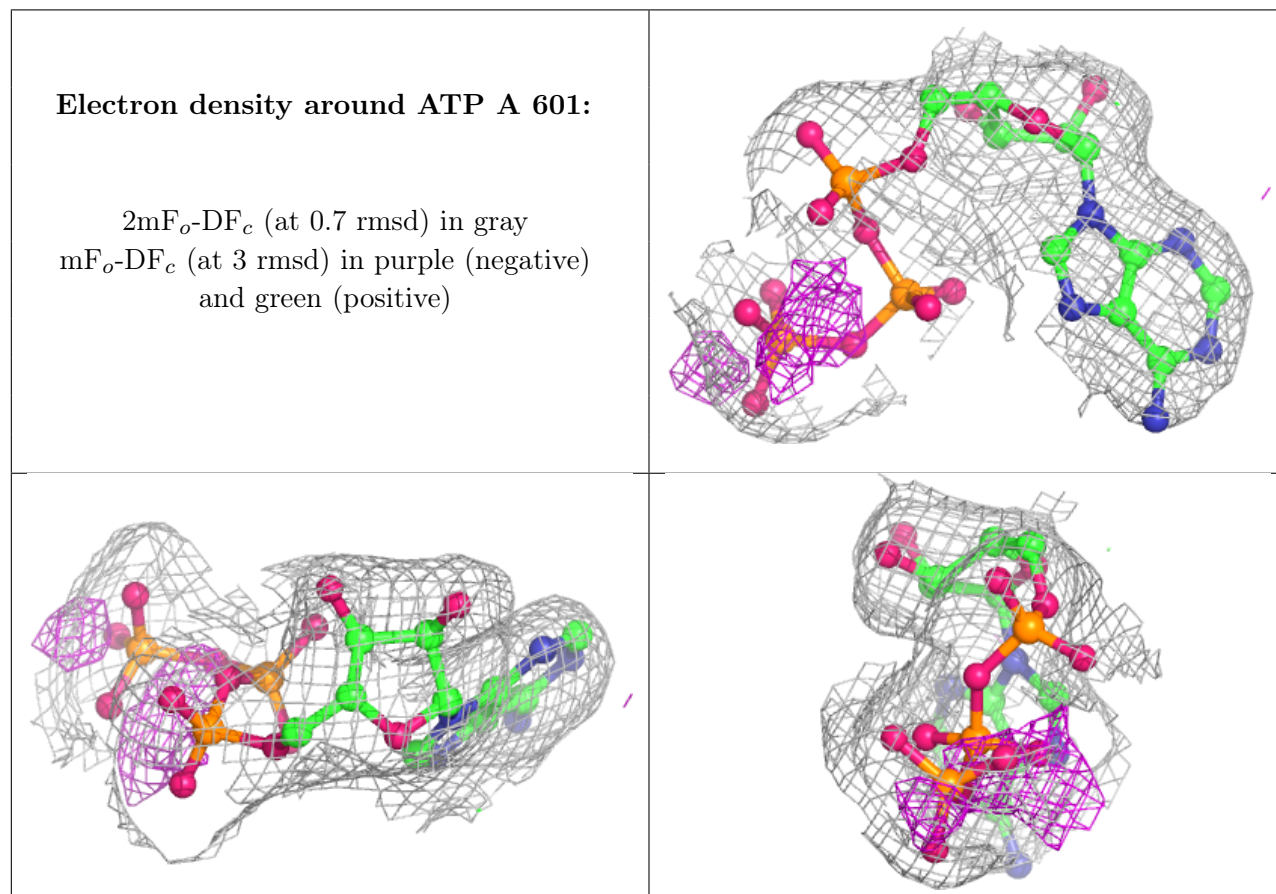
There are no monosaccharides in this entry.

6.4 Ligands [i](#)

In the following table, the Atoms column lists the number of modelled atoms in the group and the number defined in the chemical component dictionary. The B-factors column lists the minimum, median, 95th percentile and maximum values of B factors of atoms in the group. The column labelled 'Q<0.9' lists the number of atoms with occupancy less than 0.9.

Mol	Type	Chain	Res	Atoms	RSCC	RSR	B-factors(Å ²)	Q<0.9
4	NA	A	564	1/1	0.67	0.11	63,63,63,63	0
6	GOL	B	502	6/6	0.83	0.27	60,60,60,60	0
6	GOL	B	501	6/6	0.93	0.28	51,64,67,71	0
3	MN	A	561	1/1	0.95	0.15	65,65,65,65	0
3	MN	A	563	1/1	0.96	0.15	83,83,83,83	0
3	MN	A	562	1/1	0.97	0.12	67,67,67,67	0
5	ATP	A	601	31/31	0.97	0.17	71,77,91,93	0

The following is a graphical depiction of the model fit to experimental electron density of all instances of the Ligand of Interest. In addition, ligands with molecular weight > 250 and outliers as shown on the geometry validation Tables will also be included. Each fit is shown from different orientation to approximate a three-dimensional view.



6.5 Other polymers [i](#)

There are no such residues in this entry.