



Full wwPDB X-ray Structure Validation Report ⓘ

Oct 11, 2021 – 06:25 PM EDT

PDB ID : 2HND
Title : Crystal Structure of K101E Mutant HIV-1 Reverse Transcriptase in Complex with Nevirapine
Authors : Ren, J.; Nichols, C.E.; Stamp, A.; Chamberlain, P.P.; Stammers, D.K.
Deposited on : 2006-07-12
Resolution : 2.50 Å (reported)

This is a Full wwPDB X-ray Structure Validation Report for a publicly released PDB entry.

We welcome your comments at validation@mail.wwpdb.org

A user guide is available at

<https://www.wwpdb.org/validation/2017/XrayValidationReportHelp>

with specific help available everywhere you see the ⓘ symbol.

The following versions of software and data (see [references ⓘ](#)) were used in the production of this report:

MolProbity : 4.02b-467
Mogul : 1.8.5 (274361), CSD as541be (2020)
Xtrriage (Phenix) : 1.13
EDS : 2.23.2
buster-report : 1.1.7 (2018)
Percentile statistics : 20191225.v01 (using entries in the PDB archive December 25th 2019)
Refmac : 5.8.0158
CCP4 : 7.0.044 (Gargrove)
Ideal geometry (proteins) : Engh & Huber (2001)
Ideal geometry (DNA, RNA) : Parkinson et al. (1996)
Validation Pipeline (wwPDB-VP) : 2.23.2

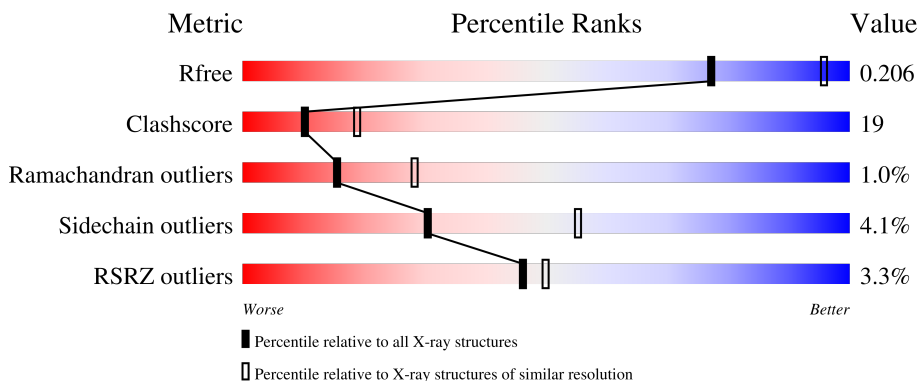
1 Overall quality at a glance

The following experimental techniques were used to determine the structure:

X-RAY DIFFRACTION


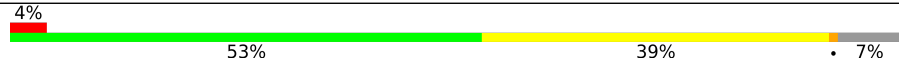
The reported resolution of this entry is 2.50 Å.

Percentile scores (ranging between 0-100) for global validation metrics of the entry are shown in the following graphic. The table shows the number of entries on which the scores are based.



Metric	Whole archive (#Entries)	Similar resolution (#Entries, resolution range(Å))
R_{free}	130704	4661 (2.50-2.50)
Clashscore	141614	5346 (2.50-2.50)
Ramachandran outliers	138981	5231 (2.50-2.50)
Sidechain outliers	138945	5233 (2.50-2.50)
RSRZ outliers	127900	4559 (2.50-2.50)

The table below summarises the geometric issues observed across the polymeric chains and their fit to the electron density. The red, orange, yellow and green segments of the lower bar indicate the fraction of residues that contain outliers for ≥ 3 , 2, 1 and 0 types of geometric quality criteria respectively. A grey segment represents the fraction of residues that are not modelled. The numeric value for each fraction is indicated below the corresponding segment, with a dot representing fractions $\leq 5\%$. The upper red bar (where present) indicates the fraction of residues that have poor fit to the electron density. The numeric value is given above the bar.

Mol	Chain	Length	Quality of chain
1	A	534	
2	B	422	

2 Entry composition [i](#)

There are 6 unique types of molecules in this entry. The entry contains 7681 atoms, of which 0 are hydrogens and 0 are deuteriums.

In the tables below, the ZeroOcc column contains the number of atoms modelled with zero occupancy, the AltConf column contains the number of residues with at least one atom in alternate conformation and the Trace column contains the number of residues modelled with at most 2 atoms.

- Molecule 1 is a protein called Reverse transcriptase/ribonuclease H.

Mol	Chain	Residues	Atoms					ZeroOcc	AltConf	Trace
			Total	C	N	O	S			
1	A	523	4295	2782	709	796	8	0	0	0

There are 2 discrepancies between the modelled and reference sequences:

Chain	Residue	Modelled	Actual	Comment	Reference
A	101	GLU	LYS	engineered mutation	UNP P04585
A	280	CSD	CYS	modified residue	UNP P04585

- Molecule 2 is a protein called Reverse transcriptase/ribonuclease H.

Mol	Chain	Residues	Atoms					ZeroOcc	AltConf	Trace
			Total	C	N	O	S			
2	B	394	3270	2131	540	593	6	0	0	0

There is a discrepancy between the modelled and reference sequences:

Chain	Residue	Modelled	Actual	Comment	Reference
B	101	GLU	LYS	engineered mutation	UNP P04585

- Molecule 3 is PHOSPHATE ION (three-letter code: PO4) (formula: O₄P).

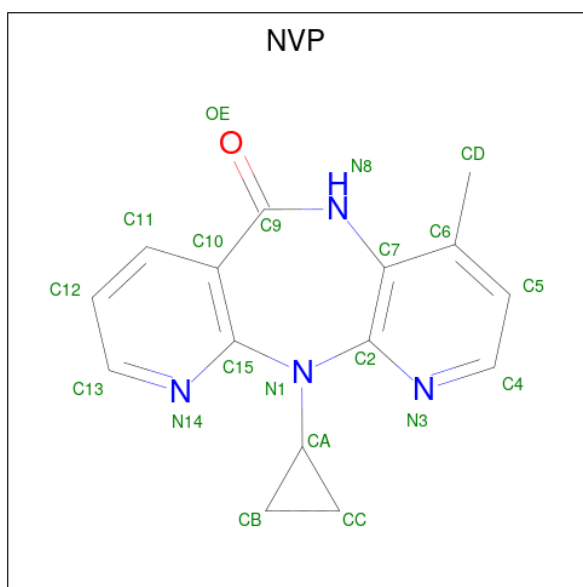


Mol	Chain	Residues	Atoms	ZeroOcc	AltConf
3	A	1	Total O P 5 4 1	0	0
3	A	1	Total O P 5 4 1	0	0
3	A	1	Total O P 5 4 1	0	0

- Molecule 4 is MAGNESIUM ION (three-letter code: MG) (formula: Mg).

Mol	Chain	Residues	Atoms	ZeroOcc	AltConf
4	A	1	Total Mg 1 1	0	0

- Molecule 5 is 11-CYCLOPROPYL-5,11-DIHYDRO-4-METHYL-6H-DIPYRIDO[3,2-B:2',3'-E][1,4]DIAZEPIN-6-ONE (three-letter code: NVP) (formula: C₁₅H₁₄N₄O).



Mol	Chain	Residues	Atoms				ZeroOcc	AltConf
			Total	C	N	O		
5	A	1	20	15	4	1	0	0

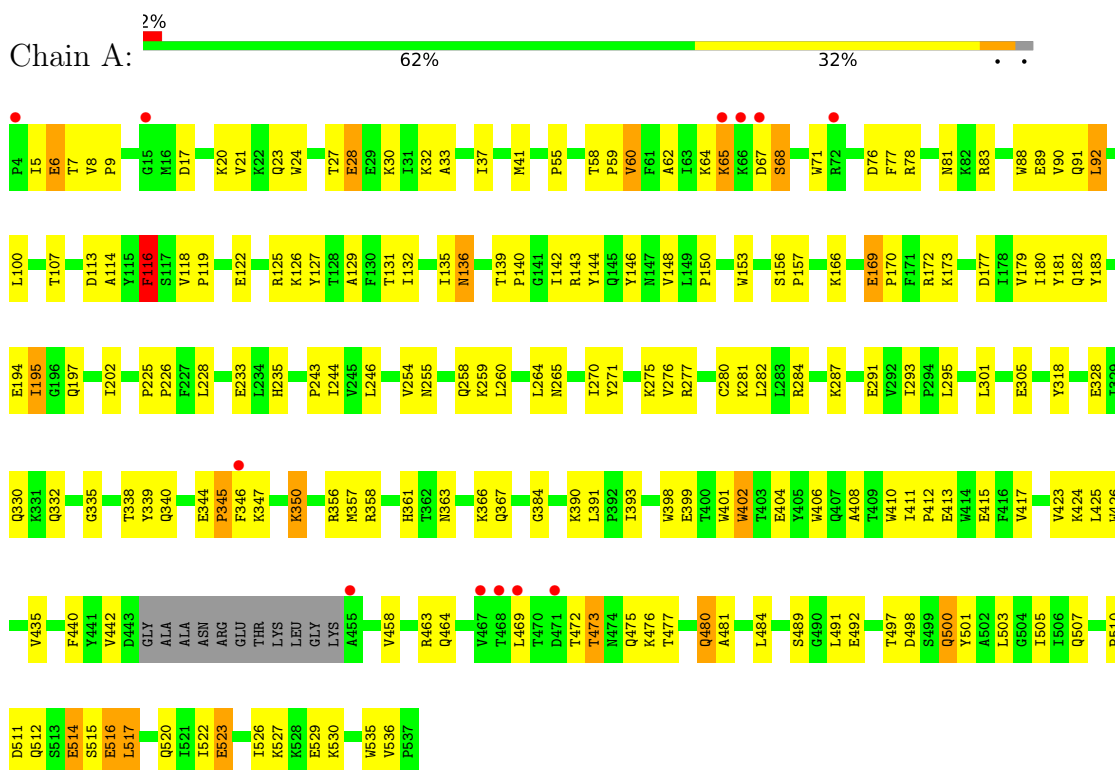
- Molecule 6 is water.

Mol	Chain	Residues	Atoms		ZeroOcc	AltConf
6	A	52	Total	O	0	0
			52	52		
6	B	28	Total	O	0	0
			28	28		

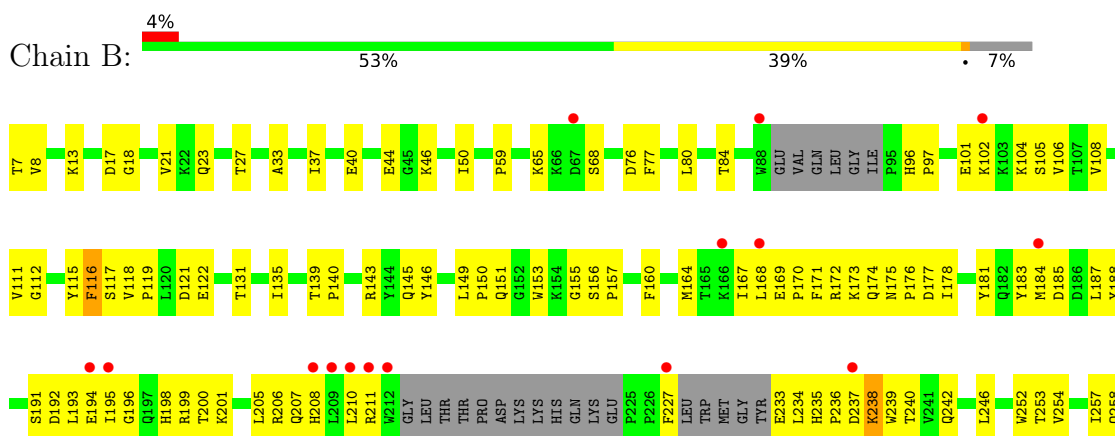
3 Residue-property plots

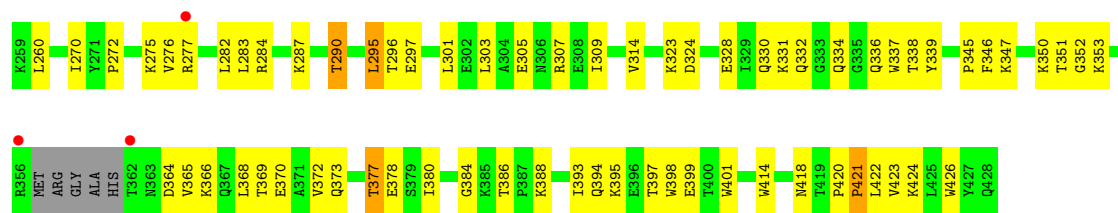
These plots are drawn for all protein, RNA, DNA and oligosaccharide chains in the entry. The first graphic for a chain summarises the proportions of the various outlier classes displayed in the second graphic. The second graphic shows the sequence view annotated by issues in geometry and electron density. Residues are color-coded according to the number of geometric quality criteria for which they contain at least one outlier: green = 0, yellow = 1, orange = 2 and red = 3 or more. A red dot above a residue indicates a poor fit to the electron density ($RSRZ > 2$). Stretches of 2 or more consecutive residues without any outlier are shown as a green connector. Residues present in the sample, but not in the model, are shown in grey.

- Molecule 1: Reverse transcriptase/ribonuclease H



- Molecule 2: Reverse transcriptase/ribonuclease H





4 Data and refinement statistics

Property	Value	Source
Space group	P 21 21 21	Depositor
Cell constants a, b, c, α , β , γ	138.90Å 114.90Å 65.60Å 90.00° 90.00° 90.00°	Depositor
Resolution (Å)	29.72 – 2.50 29.72 – 2.50	Depositor EDS
% Data completeness (in resolution range)	94.4 (29.72-2.50) 94.3 (29.72-2.50)	Depositor EDS
R_{merge}	0.10	Depositor
R_{sym}	(Not available)	Depositor
$\langle I/\sigma(I) \rangle$ ¹	1.28 (at 2.51Å)	Xtrriage
Refinement program	CNS 1.1	Depositor
R, R_{free}	0.197 , 0.269 0.194 , 0.206	Depositor DCC
R_{free} test set	1740 reflections (4.97%)	wwPDB-VP
Wilson B-factor (Å ²)	51.7	Xtrriage
Anisotropy	0.117	Xtrriage
Bulk solvent k_{sol} (e/Å ³), B_{sol} (Å ²)	0.31 , 59.3	EDS
L-test for twinning ²	$\langle L \rangle = 0.49$, $\langle L^2 \rangle = 0.32$	Xtrriage
Estimated twinning fraction	No twinning to report.	Xtrriage
F_o, F_c correlation	0.96	EDS
Total number of atoms	7681	wwPDB-VP
Average B, all atoms (Å ²)	62.0	wwPDB-VP

Xtrriage's analysis on translational NCS is as follows: *The largest off-origin peak in the Patterson function is 3.34% of the height of the origin peak. No significant pseudotranslation is detected.*

¹Intensities estimated from amplitudes.

²Theoretical values of $\langle |L| \rangle$, $\langle L^2 \rangle$ for acentric reflections are 0.5, 0.333 respectively for untwinned datasets, and 0.375, 0.2 for perfectly twinned datasets.

5 Model quality

5.1 Standard geometry

Bond lengths and bond angles in the following residue types are not validated in this section: PO4, NVP, CSD, MG

The Z score for a bond length (or angle) is the number of standard deviations the observed value is removed from the expected value. A bond length (or angle) with $|Z| > 5$ is considered an outlier worth inspection. RMSZ is the root-mean-square of all Z scores of the bond lengths (or angles).

Mol	Chain	Bond lengths		Bond angles	
		RMSZ	# Z >5	RMSZ	# Z >5
1	A	0.43	0/4401	0.63	0/5984
2	B	0.40	0/3363	0.63	0/4567
All	All	0.42	0/7764	0.63	0/10551

There are no bond length outliers.

There are no bond angle outliers.

There are no chirality outliers.

There are no planarity outliers.

5.2 Too-close contacts

In the following table, the Non-H and H(model) columns list the number of non-hydrogen atoms and hydrogen atoms in the chain respectively. The H(added) column lists the number of hydrogen atoms added and optimized by MolProbity. The Clashes column lists the number of clashes within the asymmetric unit, whereas Symm-Clashes lists symmetry-related clashes.

Mol	Chain	Non-H	H(model)	H(added)	Clashes	Symm-Clashes
1	A	4295	0	4324	155	0
2	B	3270	0	3291	142	0
3	A	15	0	0	0	0
4	A	1	0	0	0	0
5	A	20	0	14	1	0
6	A	52	0	0	8	0
6	B	28	0	0	0	0
All	All	7681	0	7629	286	0

The all-atom clashscore is defined as the number of clashes found per 1000 atoms (including hydrogen atoms). The all-atom clashscore for this structure is 19.

All (286) close contacts within the same asymmetric unit are listed below, sorted by their clash magnitude.

Atom-1	Atom-2	Interatomic distance (Å)	Clash overlap (Å)
1:A:356:ARG:HH21	1:A:358:ARG:HD2	1.25	0.99
1:A:92:LEU:HD12	1:A:92:LEU:H	1.25	0.99
1:A:507:GLN:HE22	2:B:421:PRO:HB3	1.29	0.94
1:A:517:LEU:HA	1:A:520:GLN:HE21	1.32	0.91
2:B:238:LYS:H	2:B:238:LYS:HD2	1.35	0.91
2:B:270:ILE:O	2:B:272:PRO:HD3	1.73	0.89
2:B:238:LYS:HD2	2:B:238:LYS:N	1.87	0.88
1:A:67:ASP:O	1:A:68:SER:HB3	1.72	0.87
1:A:136:ASN:HD22	1:A:139:THR:HB	1.41	0.84
1:A:113:ASP:HA	1:A:116:PHE:CD2	2.13	0.83
1:A:469:LEU:HD11	1:A:480:GLN:HG3	1.61	0.82
1:A:500:GLN:H	1:A:500:GLN:NE2	1.76	0.82
2:B:295:LEU:N	2:B:295:LEU:HD12	1.94	0.82
2:B:7:THR:HG22	2:B:119:PRO:HB2	1.62	0.81
1:A:442:VAL:HB	1:A:481:ALA:HB1	1.63	0.80
1:A:92:LEU:HD12	1:A:92:LEU:N	1.95	0.80
2:B:112:GLY:HA3	2:B:151:GLN:HE21	1.47	0.78
2:B:104:LYS:HB2	2:B:192:ASP:HA	1.65	0.76
2:B:282:LEU:HD21	2:B:296:THR:HG23	1.67	0.76
1:A:136:ASN:HD22	1:A:139:THR:CB	2.00	0.75
2:B:106:VAL:HG13	2:B:234:LEU:HB2	1.69	0.75
1:A:65:LYS:HE2	1:A:65:LYS:HA	1.70	0.73
1:A:406:TRP:CH2	2:B:418:ASN:HA	2.24	0.73
1:A:92:LEU:H	1:A:92:LEU:CD1	2.01	0.72
2:B:246:LEU:HD12	2:B:307:ARG:HG2	1.71	0.72
1:A:113:ASP:HA	1:A:116:PHE:CE2	2.25	0.71
1:A:473:THR:HG23	1:A:476:LYS:HB2	1.71	0.70
1:A:357:MET:CE	1:A:512:GLN:HE21	2.05	0.70
2:B:8:VAL:O	2:B:121:ASP:HB2	1.92	0.70
2:B:254:VAL:O	2:B:258:GLN:HG3	1.93	0.69
1:A:358:ARG:NH2	2:B:394:GLN:HG2	2.08	0.69
1:A:116:PHE:CD1	1:A:116:PHE:N	2.55	0.68
1:A:507:GLN:HE22	2:B:421:PRO:CB	2.05	0.68
2:B:206:ARG:HD2	2:B:227:PHE:CE1	2.30	0.67
1:A:156:SER:HB2	1:A:157:PRO:HD3	1.75	0.67
2:B:295:LEU:HD12	2:B:295:LEU:H	1.58	0.67
2:B:420:PRO:HG2	2:B:423:VAL:HG12	1.78	0.66
1:A:332:GLN:O	1:A:332:GLN:HG2	1.95	0.66
2:B:238:LYS:O	2:B:240:THR:HG23	1.96	0.65
2:B:420:PRO:HG2	2:B:423:VAL:CG1	2.27	0.65

Continued on next page...

Continued from previous page...

Atom-1	Atom-2	Interatomic distance (Å)	Clash overlap (Å)
2:B:172:ARG:O	2:B:176:PRO:HG3	1.97	0.65
1:A:181:TYR:CE1	1:A:183:TYR:HB2	2.32	0.64
2:B:423:VAL:HG13	2:B:424:LYS:N	2.12	0.64
1:A:270:ILE:HG23	1:A:271:TYR:CD2	2.32	0.64
1:A:28:GLU:HG3	1:A:135:ILE:CG2	2.28	0.64
1:A:356:ARG:NH2	1:A:358:ARG:HD2	2.07	0.63
1:A:408:ALA:HB2	2:B:337:TRP:HH2	1.63	0.63
2:B:297:GLU:O	2:B:301:LEU:HG	1.99	0.62
1:A:469:LEU:CD1	1:A:480:GLN:HG3	2.28	0.62
1:A:356:ARG:NH2	6:A:1038:HOH:O	2.33	0.62
1:A:275:LYS:HE2	1:A:332:GLN:NE2	2.15	0.61
1:A:408:ALA:HB1	2:B:364:ASP:HB3	1.81	0.61
1:A:281:LYS:HE3	1:A:284:ARG:CZ	2.31	0.61
1:A:363:ASN:HA	1:A:511:ASP:OD1	2.00	0.61
2:B:242:GLN:OE1	2:B:353:LYS:HE2	2.00	0.61
2:B:350:LYS:HG2	2:B:351:THR:N	2.16	0.61
1:A:384:GLY:HA3	2:B:135:ILE:HD12	1.82	0.60
2:B:365:VAL:O	2:B:369:THR:HG23	2.01	0.60
2:B:365:VAL:HG11	2:B:401:TRP:HB2	1.83	0.60
2:B:295:LEU:N	2:B:295:LEU:CD1	2.64	0.60
2:B:331:LYS:O	2:B:424:LYS:HE2	2.00	0.60
2:B:305:GLU:O	2:B:309:ILE:HG13	2.01	0.60
2:B:284:ARG:O	2:B:287:LYS:NZ	2.35	0.60
2:B:339:TYR:CZ	2:B:352:GLY:HA3	2.37	0.60
2:B:183:TYR:OH	2:B:386:THR:HG23	2.02	0.60
2:B:368:LEU:O	2:B:372:VAL:HG23	2.02	0.60
1:A:20:LYS:HE2	1:A:55:PRO:HB2	1.85	0.59
2:B:40:GLU:HG3	2:B:44:GLU:OE2	2.01	0.59
2:B:175:ASN:HD21	2:B:201:LYS:NZ	2.01	0.58
1:A:37:ILE:O	1:A:41:MET:HG3	2.04	0.58
1:A:497:THR:O	1:A:535:TRP:HA	2.04	0.58
1:A:246:LEU:HD22	1:A:260:LEU:CD1	2.34	0.58
1:A:21:VAL:HB	1:A:59:PRO:HD3	1.86	0.57
2:B:195:ILE:HG22	2:B:199:ARG:HE	1.68	0.57
2:B:332:GLN:HB2	2:B:336:GLN:O	2.05	0.57
1:A:17:ASP:O	1:A:83:ARG:HD3	2.04	0.57
1:A:491:LEU:HD13	1:A:529:GLU:HG2	1.87	0.57
1:A:507:GLN:NE2	2:B:421:PRO:HB3	2.11	0.57
2:B:239:TRP:CH2	2:B:378:GLU:HG2	2.40	0.57
2:B:116:PHE:CE1	2:B:151:GLN:HG3	2.40	0.57
1:A:246:LEU:HD22	1:A:260:LEU:HD11	1.87	0.56

Continued on next page...

Continued from previous page...

Atom-1	Atom-2	Interatomic distance (Å)	Clash overlap (Å)
1:A:440:PHE:CE1	1:A:489:SER:HB3	2.41	0.56
1:A:122:GLU:HG3	1:A:125:ARG:NH1	2.21	0.56
1:A:143:ARG:HH11	1:A:143:ARG:HG2	1.71	0.56
1:A:480:GLN:C	1:A:480:GLN:HE21	2.09	0.56
1:A:530:LYS:HA	6:A:1075:HOH:O	2.06	0.56
1:A:523:GLU:O	1:A:527:LYS:HG2	2.06	0.56
2:B:46:LYS:HZ3	2:B:116:PHE:HD2	1.53	0.55
2:B:149:LEU:HD13	2:B:156:SER:HA	1.89	0.55
2:B:105:SER:HB3	2:B:235:HIS:ND1	2.22	0.55
1:A:28:GLU:HG3	1:A:135:ILE:HG22	1.89	0.55
1:A:126:LYS:HE3	1:A:127:TYR:CZ	2.42	0.55
1:A:89:GLU:CD	1:A:92:LEU:HD21	2.28	0.55
1:A:399:GLU:HA	1:A:402:TRP:HE3	1.72	0.54
1:A:500:GLN:H	1:A:500:GLN:CD	2.10	0.54
1:A:475:GLN:HB2	1:A:501:TYR:CD2	2.43	0.54
2:B:175:ASN:HD21	2:B:201:LYS:CE	2.20	0.54
2:B:350:LYS:HG2	2:B:351:THR:H	1.73	0.54
1:A:282:LEU:HB3	1:A:293:ILE:HG21	1.90	0.54
1:A:384:GLY:CA	2:B:135:ILE:HD12	2.38	0.53
2:B:65:LYS:HB2	2:B:68:SER:HB3	1.90	0.53
2:B:21:VAL:HB	2:B:59:PRO:HD3	1.89	0.53
1:A:254:VAL:O	1:A:258:GLN:HG3	2.09	0.53
1:A:417:VAL:O	1:A:417:VAL:HG13	2.09	0.53
2:B:175:ASN:ND2	2:B:201:LYS:CE	2.72	0.53
2:B:194:GLU:HG3	2:B:196:GLY:H	1.74	0.53
1:A:393:ILE:HB	1:A:423:VAL:CG2	2.38	0.52
2:B:169:GLU:N	2:B:170:PRO:HD2	2.25	0.52
1:A:480:GLN:HE21	1:A:480:GLN:CA	2.23	0.52
2:B:115:TYR:C	2:B:117:SER:H	2.11	0.52
2:B:233:GLU:HB3	2:B:235:HIS:CE1	2.44	0.52
2:B:423:VAL:CG1	2:B:424:LYS:N	2.71	0.52
1:A:287:LYS:HG2	1:A:291:GLU:OE2	2.10	0.52
2:B:170:PRO:HG3	2:B:208:HIS:CE1	2.45	0.51
2:B:104:LYS:HD2	2:B:192:ASP:HB3	1.93	0.51
2:B:181:TYR:HE1	2:B:183:TYR:HB2	1.74	0.51
2:B:211:ARG:HG3	2:B:211:ARG:HH11	1.75	0.51
1:A:501:TYR:CZ	1:A:505:ILE:HD11	2.46	0.51
1:A:516:GLU:O	1:A:520:GLN:HG3	2.11	0.51
2:B:295:LEU:H	2:B:295:LEU:CD1	2.23	0.51
1:A:89:GLU:OE2	1:A:92:LEU:HD11	2.11	0.51
2:B:112:GLY:CA	2:B:151:GLN:HE21	2.22	0.51

Continued on next page...

Continued from previous page...

Atom-1	Atom-2	Interatomic distance (Å)	Clash overlap (Å)
1:A:472:THR:OG1	1:A:477:THR:HG23	2.12	0.50
2:B:233:GLU:N	2:B:233:GLU:OE2	2.45	0.50
2:B:330:GLN:HB2	2:B:338:THR:OG1	2.12	0.50
1:A:125:ARG:HG2	1:A:146:TYR:O	2.12	0.50
2:B:235:HIS:N	2:B:236:PRO:HD3	2.27	0.50
1:A:23:GLN:HE22	1:A:60:VAL:H	1.59	0.49
1:A:398:TRP:CE2	1:A:411:ILE:HD12	2.48	0.49
2:B:50:ILE:HG21	2:B:145:GLN:HB3	1.93	0.49
1:A:361:HIS:HB2	6:A:1033:HOH:O	2.11	0.49
1:A:401:TRP:O	1:A:404:GLU:HG2	2.12	0.49
2:B:178:ILE:O	2:B:178:ILE:HG13	2.12	0.49
1:A:65:LYS:HA	1:A:65:LYS:CE	2.42	0.49
2:B:174:GLN:C	2:B:176:PRO:HD3	2.33	0.49
2:B:422:LEU:HB3	2:B:426:TRP:CH2	2.48	0.49
1:A:23:GLN:HE22	1:A:60:VAL:HG12	1.77	0.49
2:B:257:ILE:O	2:B:260:LEU:HB3	2.13	0.48
2:B:324:ASP:OD1	2:B:388:LYS:HE3	2.13	0.48
1:A:344:GLU:OE2	1:A:345:PRO:HD2	2.14	0.48
2:B:59:PRO:HG2	2:B:76:ASP:HB3	1.96	0.48
2:B:111:VAL:HG11	2:B:187:LEU:HD22	1.94	0.48
2:B:115:TYR:HB3	2:B:149:LEU:HB2	1.95	0.48
1:A:172:ARG:NH1	1:A:180:ILE:O	2.46	0.48
2:B:328:GLU:O	2:B:339:TYR:HA	2.14	0.48
1:A:90:VAL:HG23	6:A:1069:HOH:O	2.12	0.48
1:A:335:GLY:HA2	1:A:367:GLN:OE1	2.14	0.48
1:A:345:PRO:O	1:A:346:PHE:HB2	2.14	0.48
2:B:13:LYS:HG3	2:B:84:THR:O	2.13	0.47
2:B:33:ALA:O	2:B:37:ILE:HG13	2.14	0.47
2:B:104:LYS:O	2:B:235:HIS:HA	2.14	0.47
1:A:522:ILE:O	1:A:526:ILE:HG13	2.14	0.47
2:B:164:MET:HA	2:B:167:ILE:HD11	1.96	0.47
2:B:239:TRP:CZ2	2:B:378:GLU:HG2	2.50	0.47
1:A:475:GLN:HB2	1:A:501:TYR:CE2	2.49	0.47
2:B:395:LYS:O	2:B:399:GLU:HG2	2.15	0.47
1:A:366:LYS:NZ	1:A:366:LYS:HB3	2.30	0.47
1:A:424:LYS:NZ	1:A:426:TRP:CD2	2.82	0.47
2:B:77:PHE:CD2	2:B:80:LEU:HD23	2.50	0.47
2:B:164:MET:SD	2:B:167:ILE:HD11	2.54	0.47
2:B:345:PRO:O	2:B:347:LYS:HG3	2.13	0.47
1:A:301:LEU:O	1:A:305:GLU:HG3	2.15	0.47
1:A:514:GLU:HG3	1:A:515:SER:H	1.80	0.47

Continued on next page...

Continued from previous page...

Atom-1	Atom-2	Interatomic distance (Å)	Clash overlap (Å)
1:A:30:LYS:HD3	1:A:62:ALA:HB3	1.97	0.46
1:A:89:GLU:OE2	1:A:92:LEU:HD21	2.15	0.46
1:A:340:GLN:NE2	6:A:1021:HOH:O	2.47	0.46
2:B:198:HIS:C	2:B:200:THR:N	2.69	0.46
2:B:237:ASP:HB3	2:B:238:LYS:CE	2.45	0.46
2:B:377:THR:HG22	2:B:378:GLU:N	2.29	0.46
1:A:391:LEU:C	1:A:417:VAL:HG12	2.35	0.46
1:A:492:GLU:OE2	1:A:530:LYS:HD2	2.14	0.46
2:B:17:ASP:CG	2:B:18:GLY:H	2.19	0.46
2:B:101:GLU:O	2:B:236:PRO:HB2	2.15	0.46
1:A:23:GLN:HE22	1:A:60:VAL:CG1	2.29	0.46
2:B:346:PHE:N	2:B:346:PHE:CD2	2.84	0.46
2:B:181:TYR:CE1	2:B:183:TYR:HB2	2.51	0.46
2:B:253:THR:O	2:B:257:ILE:HG13	2.16	0.46
2:B:106:VAL:CG1	2:B:234:LEU:HB2	2.44	0.45
1:A:363:ASN:HA	1:A:511:ASP:CG	2.35	0.45
1:A:435:VAL:HG22	2:B:290:THR:HG21	1.98	0.45
2:B:164:MET:HA	2:B:167:ILE:CD1	2.46	0.45
2:B:168:LEU:O	2:B:172:ARG:HB2	2.15	0.45
1:A:58:THR:HG21	1:A:77:PHE:CD2	2.51	0.45
1:A:181:TYR:HE1	1:A:183:TYR:HB2	1.79	0.45
1:A:78:ARG:O	1:A:81:ASN:HB2	2.16	0.45
2:B:369:THR:O	2:B:373:GLN:HG3	2.16	0.45
1:A:413:GLU:HA	6:A:1042:HOH:O	2.17	0.45
2:B:369:THR:HG22	2:B:398:TRP:CZ3	2.51	0.45
1:A:118:VAL:HA	1:A:119:PRO:HD3	1.86	0.45
1:A:350:LYS:HB2	1:A:350:LYS:HE2	1.68	0.45
1:A:131:THR:OG1	1:A:143:ARG:HG2	2.17	0.45
1:A:399:GLU:HG3	1:A:402:TRP:CE3	2.52	0.45
1:A:64:LYS:HG3	1:A:71:TRP:CZ3	2.51	0.45
1:A:139:THR:HA	1:A:140:PRO:HD3	1.87	0.45
1:A:150:PRO:HG2	1:A:153:TRP:HB2	1.99	0.44
1:A:179:VAL:HG12	5:A:999:NVP:HCB2	1.99	0.44
1:A:132:ILE:HB	1:A:142:ILE:HG13	1.99	0.44
1:A:277:ARG:O	1:A:281:LYS:HG3	2.17	0.44
1:A:291:GLU:HG2	1:A:293:ILE:HD12	2.00	0.44
1:A:129:ALA:HA	1:A:144:TYR:O	2.18	0.44
2:B:146:TYR:CG	2:B:150:PRO:HB3	2.53	0.44
2:B:175:ASN:ND2	2:B:201:LYS:HE3	2.33	0.44
2:B:175:ASN:HD21	2:B:201:LYS:HE3	1.82	0.44
1:A:357:MET:HE2	1:A:512:GLN:NE2	2.33	0.43

Continued on next page...

Continued from previous page...

Atom-1	Atom-2	Interatomic distance (Å)	Clash overlap (Å)
1:A:33:ALA:O	1:A:37:ILE:HG12	2.18	0.43
1:A:225:PRO:HA	1:A:226:PRO:C	2.39	0.43
1:A:357:MET:HE2	1:A:512:GLN:HE21	1.81	0.43
2:B:156:SER:N	2:B:157:PRO:HD2	2.33	0.43
2:B:175:ASN:N	2:B:176:PRO:HD3	2.33	0.43
2:B:366:LYS:HG2	2:B:370:GLU:OE1	2.18	0.43
1:A:28:GLU:O	1:A:32:LYS:HG3	2.18	0.43
1:A:344:GLU:HB3	1:A:347:LYS:HE3	2.01	0.43
2:B:380:ILE:O	2:B:384:GLY:N	2.51	0.43
1:A:27:THR:OG1	1:A:30:LYS:HG3	2.19	0.43
2:B:115:TYR:O	2:B:117:SER:N	2.47	0.43
2:B:116:PHE:CZ	2:B:151:GLN:HG3	2.54	0.43
2:B:46:LYS:HE2	2:B:116:PHE:HB3	2.01	0.43
2:B:118:VAL:HA	2:B:119:PRO:HD3	1.88	0.43
1:A:59:PRO:HG2	1:A:76:ASP:HB3	2.01	0.43
1:A:148:VAL:O	1:A:150:PRO:HD3	2.19	0.43
2:B:175:ASN:ND2	2:B:201:LYS:NZ	2.67	0.43
1:A:264:LEU:HD13	1:A:276:VAL:HG12	2.01	0.43
2:B:96:HIS:HA	2:B:97:PRO:HD3	1.86	0.43
1:A:358:ARG:HH22	2:B:394:GLN:HG2	1.81	0.43
2:B:153:TRP:CH2	2:B:155:GLY:HA3	2.54	0.43
2:B:275:LYS:HD3	2:B:277:ARG:NH1	2.34	0.42
1:A:8:VAL:HA	1:A:9:PRO:HD3	1.78	0.42
1:A:202:ILE:HG21	6:A:1071:HOH:O	2.18	0.42
1:A:226:PRO:HB3	1:A:235:HIS:CE1	2.55	0.42
2:B:211:ARG:HG3	2:B:211:ARG:NH1	2.34	0.42
1:A:505:ILE:O	1:A:510:PRO:HD3	2.19	0.42
2:B:131:THR:OG1	2:B:143:ARG:HD2	2.18	0.42
1:A:5:ILE:HG13	1:A:6:GLU:N	2.33	0.42
1:A:107:THR:HB	1:A:202:ILE:HD11	2.01	0.42
6:A:1039:HOH:O	2:B:27:THR:HB	2.19	0.42
2:B:175:ASN:C	2:B:177:ASP:H	2.22	0.42
2:B:350:LYS:HE3	2:B:378:GLU:OE1	2.20	0.42
2:B:206:ARG:HD2	2:B:227:PHE:HE1	1.80	0.42
2:B:252:TRP:CZ3	2:B:260:LEU:HD22	2.54	0.42
1:A:500:GLN:CD	1:A:500:GLN:N	2.73	0.42
1:A:169:GLU:OE1	1:A:169:GLU:HA	2.19	0.42
1:A:410:TRP:HA	1:A:410:TRP:CE3	2.55	0.42
1:A:255:ASN:O	1:A:259:LYS:HG3	2.19	0.42
2:B:183:TYR:CE1	2:B:184:MET:HG3	2.54	0.42
1:A:473:THR:HG23	1:A:476:LYS:CB	2.44	0.42

Continued on next page...

Continued from previous page...

Atom-1	Atom-2	Interatomic distance (Å)	Clash overlap (Å)
1:A:328:GLU:O	1:A:339:TYR:HA	2.20	0.42
2:B:160:PHE:O	2:B:160:PHE:CD1	2.73	0.42
1:A:126:LYS:HE3	1:A:127:TYR:OH	2.19	0.41
2:B:211:ARG:O	2:B:211:ARG:HG2	2.20	0.41
1:A:228:LEU:HD23	1:A:233:GLU:HA	2.02	0.41
2:B:323:LYS:HA	2:B:323:LYS:HD3	1.80	0.41
1:A:282:LEU:HD11	1:A:295:LEU:CD2	2.50	0.41
1:A:390:LYS:HD3	1:A:415:GLU:CG	2.50	0.41
2:B:108:VAL:HG22	2:B:188:TYR:CD2	2.55	0.41
2:B:205:LEU:C	2:B:207:GLN:N	2.74	0.41
1:A:90:VAL:O	1:A:91:GLN:C	2.59	0.41
2:B:276:VAL:O	2:B:277:ARG:C	2.58	0.41
1:A:100:LEU:O	1:A:318:TYR:HB3	2.19	0.41
1:A:330:GLN:HB2	1:A:338:THR:OG1	2.20	0.41
1:A:107:THR:HB	1:A:202:ILE:CD1	2.51	0.41
1:A:401:TRP:HB2	1:A:425:LEU:HD11	2.03	0.41
1:A:480:GLN:CA	1:A:480:GLN:NE2	2.82	0.41
2:B:195:ILE:CG2	2:B:199:ARG:HE	2.34	0.41
1:A:143:ARG:HG2	1:A:143:ARG:NH1	2.34	0.41
1:A:275:LYS:HE2	1:A:332:GLN:HE21	1.84	0.41
2:B:191:SER:HB2	2:B:193:LEU:HD13	2.02	0.41
2:B:393:ILE:HD11	2:B:397:THR:CG2	2.51	0.41
1:A:194:GLU:HB2	1:A:197:GLN:OE1	2.21	0.41
1:A:463:ARG:CG	1:A:464:GLN:N	2.84	0.41
2:B:101:GLU:HG2	2:B:102:LYS:N	2.36	0.41
2:B:151:GLN:HB3	2:B:185:ASP:OD1	2.20	0.41
2:B:173:LYS:O	2:B:176:PRO:HD3	2.21	0.41
1:A:265:ASN:N	1:A:265:ASN:HD22	2.18	0.41
1:A:402:TRP:CD1	1:A:402:TRP:C	2.95	0.41
1:A:500:GLN:O	1:A:503:LEU:HB3	2.21	0.41
2:B:257:ILE:HB	2:B:283:LEU:HD21	2.02	0.41
1:A:88:TRP:HA	1:A:88:TRP:CE3	2.56	0.40
1:A:166:LYS:O	1:A:169:GLU:HB2	2.20	0.40
2:B:139:THR:HB	2:B:140:PRO:HD2	2.03	0.40
2:B:198:HIS:O	2:B:200:THR:N	2.54	0.40
1:A:170:PRO:O	1:A:173:LYS:N	2.55	0.40
2:B:198:HIS:C	2:B:200:THR:H	2.24	0.40
1:A:177:ASP:OD2	1:A:177:ASP:N	2.50	0.40
1:A:194:GLU:O	1:A:195:ILE:C	2.60	0.40
2:B:23:GLN:OE1	2:B:59:PRO:HA	2.22	0.40
1:A:498:ASP:HA	1:A:536:VAL:O	2.21	0.40

There are no symmetry-related clashes.

5.3 Torsion angles [i](#)

5.3.1 Protein backbone [i](#)

In the following table, the Percentiles column shows the percent Ramachandran outliers of the chain as a percentile score with respect to all X-ray entries followed by that with respect to entries of similar resolution.

The Analysed column shows the number of residues for which the backbone conformation was analysed, and the total number of residues.

Mol	Chain	Analysed	Favoured	Allowed	Outliers	Percentiles	
1	A	518/534 (97%)	482 (93%)	29 (6%)	7 (1%)	11	20
2	B	384/422 (91%)	347 (90%)	35 (9%)	2 (0%)	29	48
All	All	902/956 (94%)	829 (92%)	64 (7%)	9 (1%)	15	28

All (9) Ramachandran outliers are listed below:

Mol	Chain	Res	Type
1	A	68	SER
1	A	114	ALA
1	A	116	PHE
2	B	116	PHE
1	A	195	ILE
1	A	412	PRO
1	A	345	PRO
2	B	421	PRO
1	A	243	PRO

5.3.2 Protein sidechains [i](#)

In the following table, the Percentiles column shows the percent sidechain outliers of the chain as a percentile score with respect to all X-ray entries followed by that with respect to entries of similar resolution.

The Analysed column shows the number of residues for which the sidechain conformation was analysed, and the total number of residues.

Mol	Chain	Analysed	Rotameric	Outliers	Percentiles	
1	A	472/479 (98%)	449 (95%)	23 (5%)	25	47
2	B	361/384 (94%)	350 (97%)	11 (3%)	41	68

Continued on next page...

Continued from previous page...

Mol	Chain	Analysed	Rotameric	Outliers	Percentiles
All	All	833/863 (96%)	799 (96%)	34 (4%)	30 55

All (34) residues with a non-rotameric sidechain are listed below:

Mol	Chain	Res	Type
1	A	6	GLU
1	A	7	THR
1	A	24	TRP
1	A	28	GLU
1	A	60	VAL
1	A	65	LYS
1	A	92	LEU
1	A	116	PHE
1	A	136	ASN
1	A	169	GLU
1	A	182	GLN
1	A	244	ILE
1	A	350	LYS
1	A	402	TRP
1	A	458	VAL
1	A	473	THR
1	A	480	GLN
1	A	484	LEU
1	A	500	GLN
1	A	514	GLU
1	A	516	GLU
1	A	517	LEU
1	A	523	GLU
2	B	122	GLU
2	B	171	PHE
2	B	210	LEU
2	B	238	LYS
2	B	290	THR
2	B	295	LEU
2	B	303	LEU
2	B	314	VAL
2	B	334	GLN
2	B	377	THR
2	B	414	TRP

Sometimes sidechains can be flipped to improve hydrogen bonding and reduce clashes. All (22) such sidechains are listed below:

Mol	Chain	Res	Type
1	A	23	GLN
1	A	136	ASN
1	A	222	GLN
1	A	265	ASN
1	A	278	GLN
1	A	332	GLN
1	A	336	GLN
1	A	428	GLN
1	A	475	GLN
1	A	480	GLN
1	A	500	GLN
1	A	507	GLN
1	A	509	GLN
1	A	512	GLN
1	A	520	GLN
2	B	147	ASN
2	B	151	GLN
2	B	175	ASN
2	B	182	GLN
2	B	278	GLN
2	B	348	ASN
2	B	407	GLN

5.3.3 RNA [i](#)

There are no RNA molecules in this entry.

5.4 Non-standard residues in protein, DNA, RNA chains [i](#)

1 non-standard protein/DNA/RNA residue is modelled in this entry.

In the following table, the Counts columns list the number of bonds (or angles) for which Mogul statistics could be retrieved, the number of bonds (or angles) that are observed in the model and the number of bonds (or angles) that are defined in the Chemical Component Dictionary. The Link column lists molecule types, if any, to which the group is linked. The Z score for a bond length (or angle) is the number of standard deviations the observed value is removed from the expected value. A bond length (or angle) with $|Z| > 2$ is considered an outlier worth inspection. RMSZ is the root-mean-square of all Z scores of the bond lengths (or angles).

Mol	Type	Chain	Res	Link	Bond lengths			Bond angles		
					Counts	RMSZ	$\# Z > 2$	Counts	RMSZ	$\# Z > 2$
1	CSD	A	280	1	3,7,8	0.94	0	1,8,10	3.45	1 (100%)

In the following table, the Chirals column lists the number of chiral outliers, the number of chiral centers analysed, the number of these observed in the model and the number defined in the Chemical Component Dictionary. Similar counts are reported in the Torsion and Rings columns. '-' means no outliers of that kind were identified.

Mol	Type	Chain	Res	Link	Chirals	Torsions	Rings
1	CSD	A	280	1	-	1/2/6/8	-

There are no bond length outliers.

All (1) bond angle outliers are listed below:

Mol	Chain	Res	Type	Atoms	Z	Observed(°)	Ideal(°)
1	A	280	CSD	OD1-SG-CB	-3.45	98.98	105.54

There are no chirality outliers.

All (1) torsion outliers are listed below:

Mol	Chain	Res	Type	Atoms
1	A	280	CSD	N-CA-CB-SG

There are no ring outliers.

No monomer is involved in short contacts.

5.5 Carbohydrates [i](#)

There are no monosaccharides in this entry.

5.6 Ligand geometry [i](#)

Of 5 ligands modelled in this entry, 1 is monoatomic - leaving 4 for Mogul analysis.

In the following table, the Counts columns list the number of bonds (or angles) for which Mogul statistics could be retrieved, the number of bonds (or angles) that are observed in the model and the number of bonds (or angles) that are defined in the Chemical Component Dictionary. The Link column lists molecule types, if any, to which the group is linked. The Z score for a bond length (or angle) is the number of standard deviations the observed value is removed from the expected value. A bond length (or angle) with $|Z| > 2$ is considered an outlier worth inspection. RMSZ is the root-mean-square of all Z scores of the bond lengths (or angles).

Mol	Type	Chain	Res	Link	Bond lengths			Bond angles		
					Counts	RMSZ	$\# Z > 2$	Counts	RMSZ	$\# Z > 2$
3	PO4	A	1302	-	4,4,4	1.60	0	6,6,6	0.43	0

Mol	Type	Chain	Res	Link	Bond lengths			Bond angles		
					Counts	RMSZ	# Z > 2	Counts	RMSZ	# Z > 2
5	NVP	A	999	-	15,23,23	1.41	2 (13%)	13,34,34	1.19	1 (7%)
3	PO4	A	1300	-	4,4,4	1.64	0	6,6,6	0.45	0
3	PO4	A	1301	-	4,4,4	1.61	0	6,6,6	0.44	0

In the following table, the Chirals column lists the number of chiral outliers, the number of chiral centers analysed, the number of these observed in the model and the number defined in the Chemical Component Dictionary. Similar counts are reported in the Torsion and Rings columns. '-' means no outliers of that kind were identified.

Mol	Type	Chain	Res	Link	Chirals	Torsions	Rings
5	NVP	A	999	-	-	0/0/6/6	0/3/4/4

All (2) bond length outliers are listed below:

Mol	Chain	Res	Type	Atoms	Z	Observed(Å)	Ideal(Å)
5	A	999	NVP	C7-C2	2.45	1.41	1.38
5	A	999	NVP	C10-C15	2.33	1.43	1.41

All (1) bond angle outliers are listed below:

Mol	Chain	Res	Type	Atoms	Z	Observed(°)	Ideal(°)
5	A	999	NVP	C13-N14-C15	2.17	119.46	116.77

There are no chirality outliers.

There are no torsion outliers.

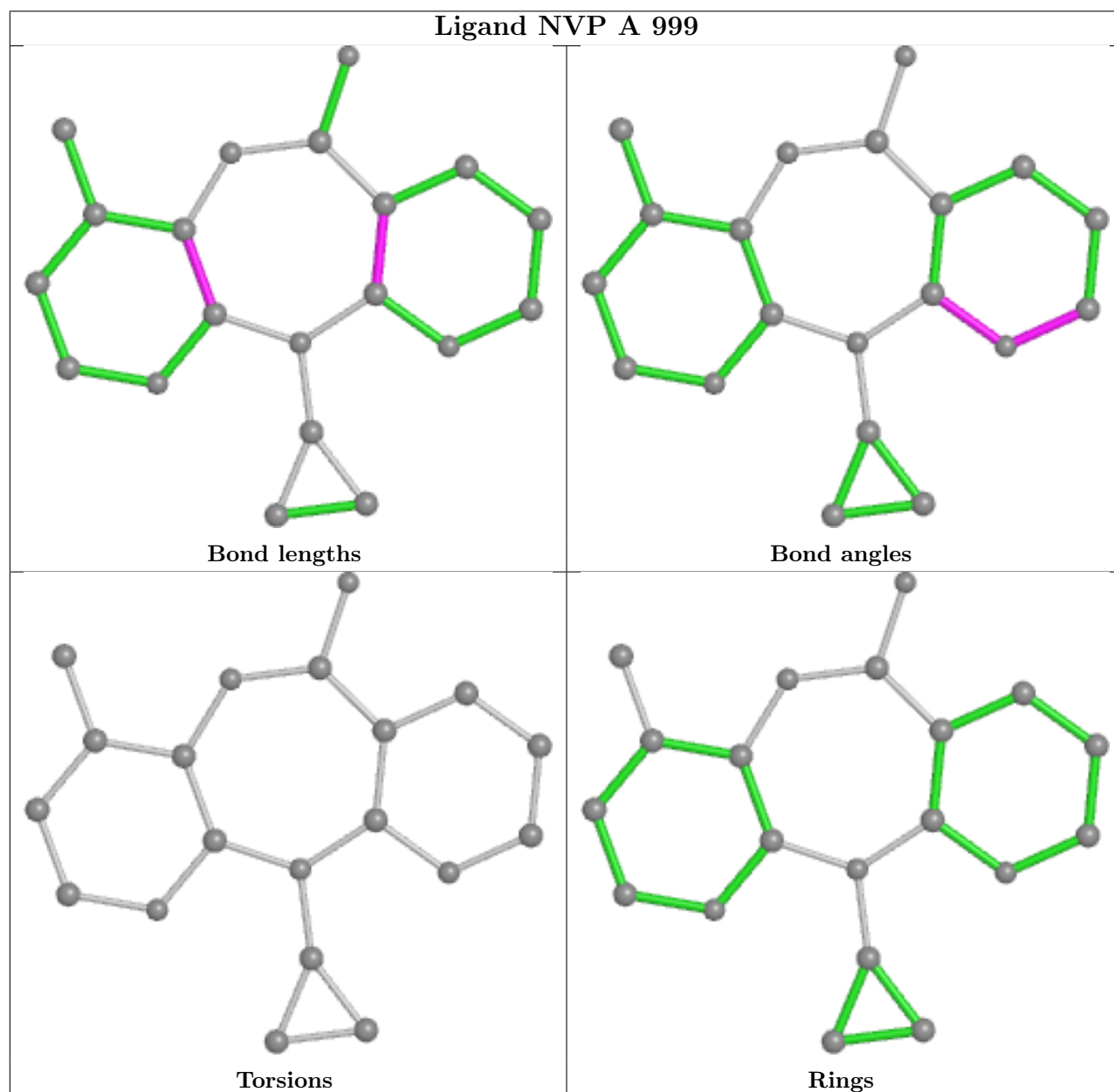
There are no ring outliers.

1 monomer is involved in 1 short contact:

Mol	Chain	Res	Type	Clashes	Symm-Clashes
5	A	999	NVP	1	0

The following is a two-dimensional graphical depiction of Mogul quality analysis of bond lengths, bond angles, torsion angles, and ring geometry for all instances of the Ligand of Interest. In addition, ligands with molecular weight > 250 and outliers as shown on the validation Tables will also be included. For torsion angles, if less than 5% of the Mogul distribution of torsion angles is within 10 degrees of the torsion angle in question, then that torsion angle is considered an outlier. Any bond that is central to one or more torsion angles identified as an outlier by Mogul will be highlighted in the graph. For rings, the root-mean-square deviation (RMSD) between the ring in question and similar rings identified by Mogul is calculated over all ring torsion angles. If the average RMSD is greater than 60 degrees and the minimal RMSD between the ring in question and any Mogul-identified rings is also greater than 60 degrees, then that ring is considered an outlier.

The outliers are highlighted in purple. The color gray indicates Mogul did not find sufficient equivalents in the CSD to analyse the geometry.



5.7 Other polymers [i](#)

There are no such residues in this entry.

5.8 Polymer linkage issues [i](#)

There are no chain breaks in this entry.

6 Fit of model and data

6.1 Protein, DNA and RNA chains

In the following table, the column labelled ‘#RSRZ > 2’ contains the number (and percentage) of RSRZ outliers, followed by percent RSRZ outliers for the chain as percentile scores relative to all X-ray entries and entries of similar resolution. The OWAB column contains the minimum, median, 95th percentile and maximum values of the occupancy-weighted average B-factor per residue. The column labelled ‘Q < 0.9’ lists the number of (and percentage) of residues with an average occupancy less than 0.9.

Mol	Chain	Analysed	<RSRZ>	#RSRZ>2	OWAB(Å ²)	Q<0.9
1	A	522/534 (97%)	-0.32	12 (2%) 60 63	28, 54, 100, 147	0
2	B	394/422 (93%)	-0.06	18 (4%) 32 34	29, 59, 113, 131	0
All	All	916/956 (95%)	-0.21	30 (3%) 46 50	28, 56, 107, 147	0

All (30) RSRZ outliers are listed below:

Mol	Chain	Res	Type	RSRZ
1	A	67	ASP	5.2
2	B	88	TRP	4.4
1	A	66	LYS	4.3
2	B	356	ARG	4.2
2	B	212	TRP	4.1
1	A	469	LEU	3.9
1	A	468	THR	3.8
1	A	471	ASP	3.5
2	B	211	ARG	3.5
2	B	209	LEU	3.4
2	B	195	ILE	3.3
1	A	4	PRO	3.3
1	A	455	ALA	3.1
2	B	362	THR	2.9
1	A	15	GLY	2.9
2	B	67	ASP	2.7
2	B	237	ASP	2.6
2	B	194	GLU	2.6
1	A	72	ARG	2.5
2	B	210	LEU	2.4
1	A	65	LYS	2.4
2	B	102	LYS	2.4
2	B	184	MET	2.4
1	A	467	VAL	2.2

Continued on next page...

Continued from previous page...

Mol	Chain	Res	Type	RSRZ
2	B	208	HIS	2.2
2	B	166	LYS	2.2
2	B	168	LEU	2.2
2	B	227	PHE	2.1
1	A	346	PHE	2.1
2	B	277	ARG	2.0

6.2 Non-standard residues in protein, DNA, RNA chains [i](#)

In the following table, the Atoms column lists the number of modelled atoms in the group and the number defined in the chemical component dictionary. The B-factors column lists the minimum, median, 95th percentile and maximum values of B factors of atoms in the group. The column labelled 'Q< 0.9' lists the number of atoms with occupancy less than 0.9.

Mol	Type	Chain	Res	Atoms	RSCC	RSR	B-factors(Å ²)	Q<0.9
1	CSD	A	280	8/9	0.96	0.14	43,49,78,85	0

6.3 Carbohydrates [i](#)

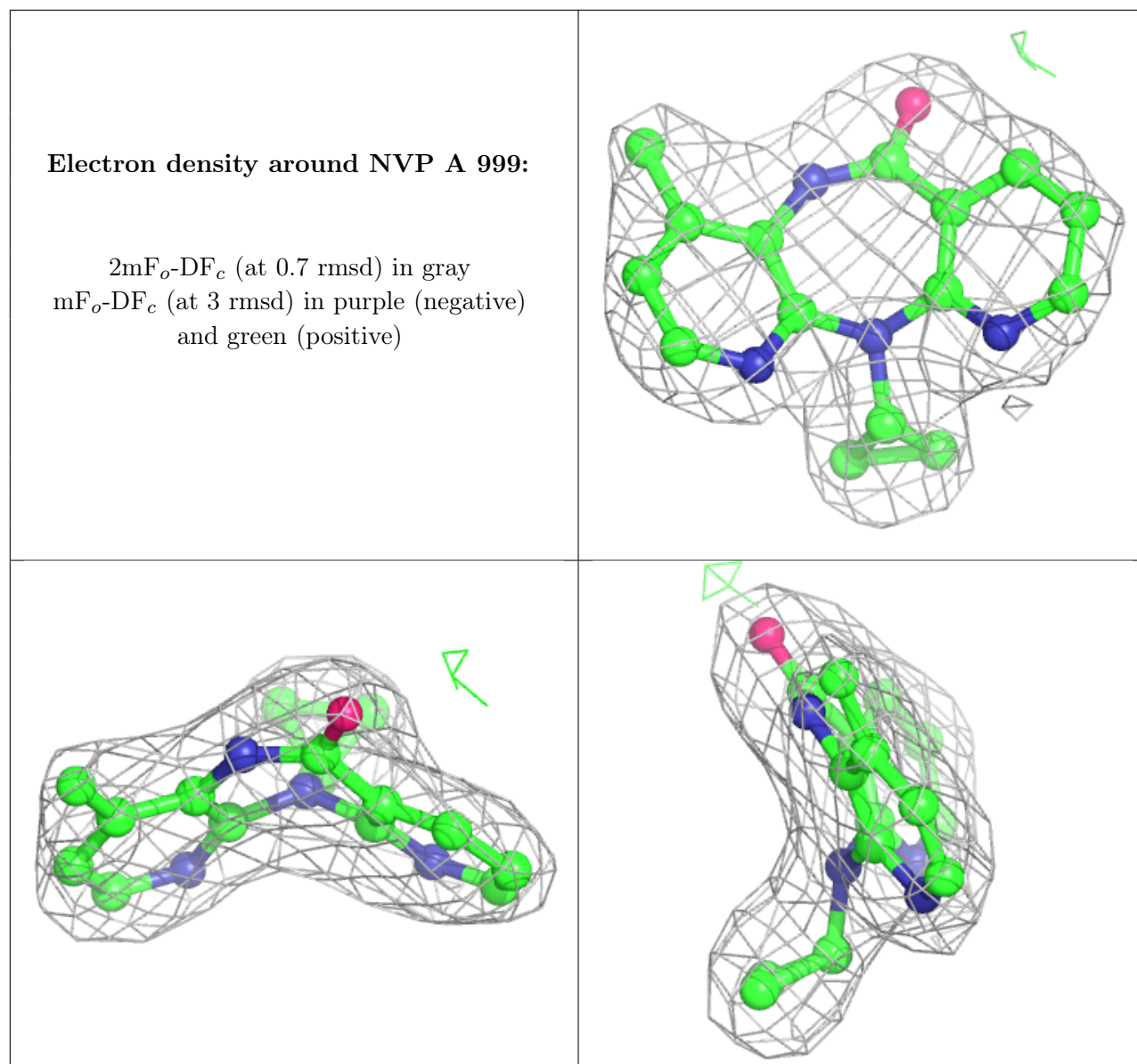
There are no monosaccharides in this entry.

6.4 Ligands [i](#)

In the following table, the Atoms column lists the number of modelled atoms in the group and the number defined in the chemical component dictionary. The B-factors column lists the minimum, median, 95th percentile and maximum values of B factors of atoms in the group. The column labelled 'Q< 0.9' lists the number of atoms with occupancy less than 0.9.

Mol	Type	Chain	Res	Atoms	RSCC	RSR	B-factors(Å ²)	Q<0.9
3	PO4	A	1302	5/5	0.78	0.27	146,149,150,150	0
3	PO4	A	1300	5/5	0.85	0.16	129,132,140,141	0
4	MG	A	1303	1/1	0.89	0.10	53,53,53,53	0
3	PO4	A	1301	5/5	0.96	0.13	123,126,130,131	0
5	NVP	A	999	20/20	0.98	0.13	23,37,47,49	0

The following is a graphical depiction of the model fit to experimental electron density of all instances of the Ligand of Interest. In addition, ligands with molecular weight > 250 and outliers as shown on the geometry validation Tables will also be included. Each fit is shown from different orientation to approximate a three-dimensional view.



6.5 Other polymers [i](#)

There are no such residues in this entry.