



Full wwPDB X-ray Structure Validation Report ⓘ

Aug 19, 2023 – 08:44 PM EDT

PDB ID : 2HI4
Title : Crystal Structure of Human Microsomal P450 1A2 in complex with alpha-naphthoflavone
Authors : Sansen, S.; Yano, J.K.; Reynald, R.L.; Schoch, G.S.; Stout, C.D.; Johnson, E.F.
Deposited on : 2006-06-29
Resolution : 1.95 Å(reported)

This is a Full wwPDB X-ray Structure Validation Report for a publicly released PDB entry.

We welcome your comments at validation@mail.wwpdb.org

A user guide is available at

<https://www.wwpdb.org/validation/2017/XrayValidationReportHelp>

with specific help available everywhere you see the ⓘ symbol.

The types of validation reports are described at

<http://www.wwpdb.org/validation/2017/FAQs#types>.

The following versions of software and data (see [references ⓘ](#)) were used in the production of this report:

MolProbity : 4.02b-467
Mogul : 1.8.5 (274361), CSD as541be (2020)
Xtrriage (Phenix) : 1.13
EDS : 2.35
buster-report : 1.1.7 (2018)
Percentile statistics : 20191225.v01 (using entries in the PDB archive December 25th 2019)
Refmac : 5.8.0158
CCP4 : 7.0.044 (Gargrove)
Ideal geometry (proteins) : Engh & Huber (2001)
Ideal geometry (DNA, RNA) : Parkinson et al. (1996)
Validation Pipeline (wwPDB-VP) : 2.35

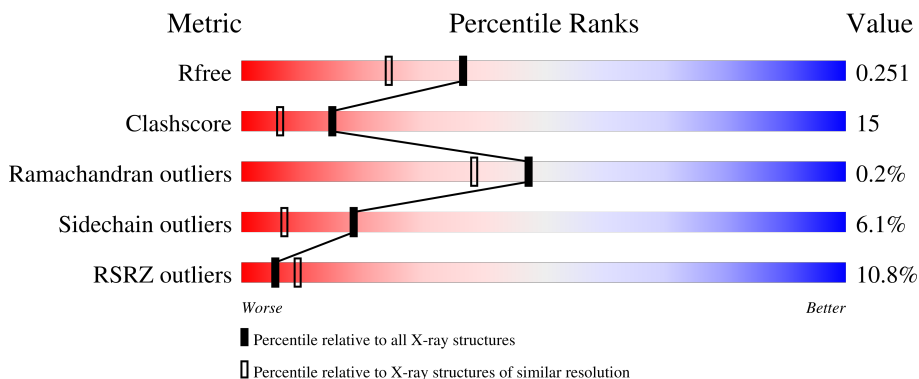
1 Overall quality at a glance

The following experimental techniques were used to determine the structure:

X-RAY DIFFRACTION

The reported resolution of this entry is 1.95 Å.

Percentile scores (ranging between 0-100) for global validation metrics of the entry are shown in the following graphic. The table shows the number of entries on which the scores are based.



Metric	Whole archive (#Entries)	Similar resolution (#Entries, resolution range(Å))
R_{free}	130704	2580 (1.96-1.96)
Clashscore	141614	2705 (1.96-1.96)
Ramachandran outliers	138981	2678 (1.96-1.96)
Sidechain outliers	138945	2678 (1.96-1.96)
RSRZ outliers	127900	2539 (1.96-1.96)

The table below summarises the geometric issues observed across the polymeric chains and their fit to the electron density. The red, orange, yellow and green segments of the lower bar indicate the fraction of residues that contain outliers for ≥ 3 , 2, 1 and 0 types of geometric quality criteria respectively. A grey segment represents the fraction of residues that are not modelled. The numeric value for each fraction is indicated below the corresponding segment, with a dot representing fractions $\leq 5\%$. The upper red bar (where present) indicates the fraction of residues that have poor fit to the electron density. The numeric value is given above the bar.

Mol	Chain	Length	Quality of chain
1	A	495	

2 Entry composition [i](#)

There are 4 unique types of molecules in this entry. The entry contains 4069 atoms, of which 0 are hydrogens and 0 are deuteriums.

In the tables below, the ZeroOcc column contains the number of atoms modelled with zero occupancy, the AltConf column contains the number of residues with at least one atom in alternate conformation and the Trace column contains the number of residues modelled with at most 2 atoms.

- Molecule 1 is a protein called Cytochrome P450 1A2.

Mol	Chain	Residues	Atoms					ZeroOcc	AltConf	Trace
			Total	C	N	O	S			
1	A	480	3845	2465	675	690	15	0	0	0

There are 6 discrepancies between the modelled and reference sequences:

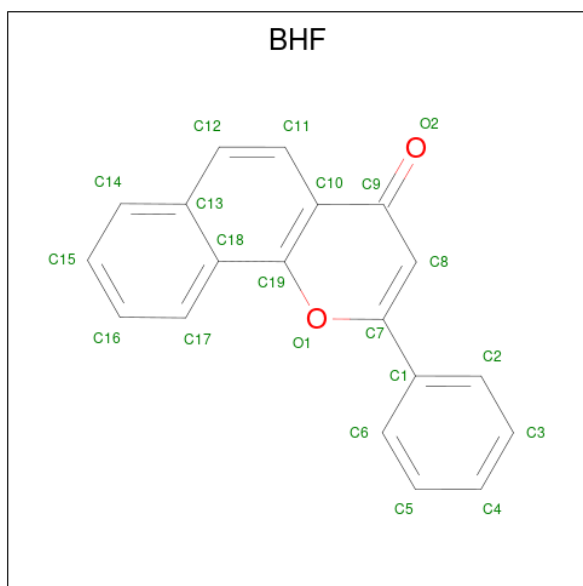
Chain	Residue	Modelled	Actual	Comment	Reference
A	25	MET	-	cloning artifact	UNP P05177
A	26	ALA	-	cloning artifact	UNP P05177
A	516	HIS	-	expression tag	UNP P05177
A	517	HIS	-	expression tag	UNP P05177
A	518	HIS	-	expression tag	UNP P05177
A	519	HIS	-	expression tag	UNP P05177

- Molecule 2 is PROTOPORPHYRIN IX CONTAINING FE (three-letter code: HEM) (formula: $C_{34}H_{32}FeN_4O_4$).



Mol	Chain	Residues	Atoms				ZeroOcc	AltConf	
			Total	C	Fe	N			O
2	A	1	43	34	1	4	4	0	0

- Molecule 3 is 2-PHENYL-4H-BENZO[H]CHROMEN-4-ONE (three-letter code: BHF) (formula: C₁₉H₁₂O₂).



Mol	Chain	Residues	Atoms			ZeroOcc	AltConf
			Total	C	O		
3	A	1	21	19	2	0	0

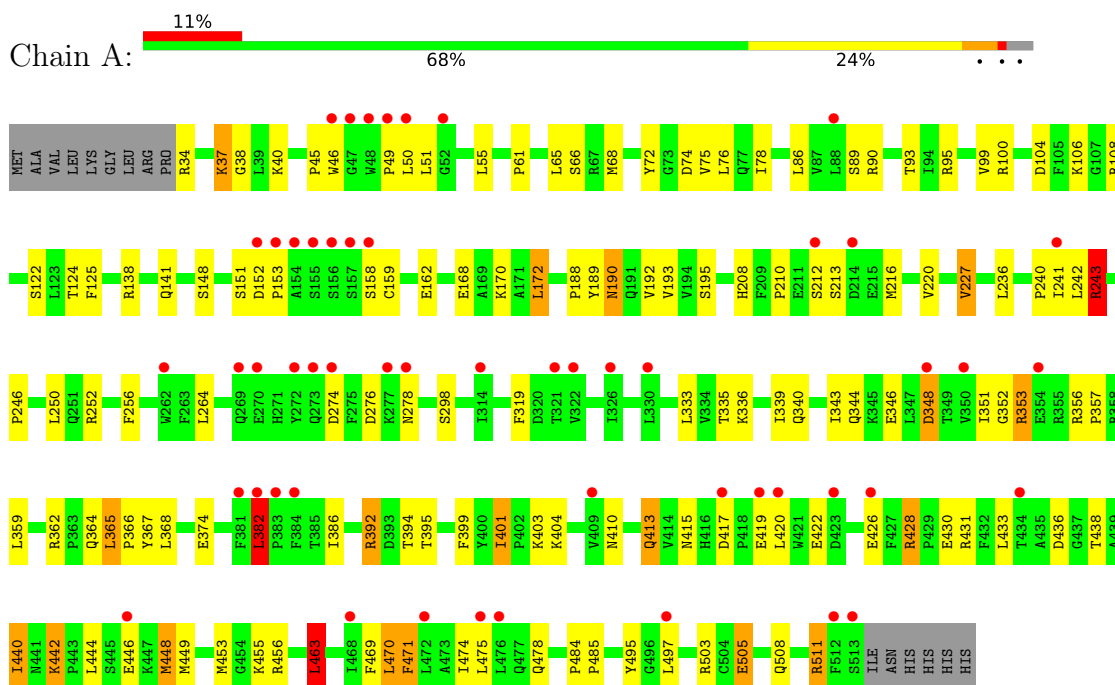
- Molecule 4 is water.

Mol	Chain	Residues	Atoms		ZeroOcc	AltConf
			Total	O		
4	A	160	160	160	0	0

3 Residue-property plots [i](#)

These plots are drawn for all protein, RNA, DNA and oligosaccharide chains in the entry. The first graphic for a chain summarises the proportions of the various outlier classes displayed in the second graphic. The second graphic shows the sequence view annotated by issues in geometry and electron density. Residues are color-coded according to the number of geometric quality criteria for which they contain at least one outlier: green = 0, yellow = 1, orange = 2 and red = 3 or more. A red dot above a residue indicates a poor fit to the electron density ($RSRZ > 2$). Stretches of 2 or more consecutive residues without any outlier are shown as a green connector. Residues present in the sample, but not in the model, are shown in grey.

- Molecule 1: Cytochrome P450 1A2



4 Data and refinement statistics

Property	Value	Source
Space group	I 2 2 2	Depositor
Cell constants a, b, c, α , β , γ	79.63Å 80.82Å 175.82Å 90.00° 90.00° 90.00°	Depositor
Resolution (Å)	29.51 – 1.95 29.51 – 1.90	Depositor EDS
% Data completeness (in resolution range)	91.1 (29.51-1.95) 91.3 (29.51-1.90)	Depositor EDS
R_{merge}	0.09	Depositor
R_{sym}	0.09	Depositor
$\langle I/\sigma(I) \rangle$ ¹	3.76 (at 1.91Å)	Xtrriage
Refinement program	CNS 1.1	Depositor
R, R_{free}	0.226 , 0.267 0.209 , 0.251	Depositor DCC
R_{free} test set	1871 reflections (4.55%)	wwPDB-VP
Wilson B-factor (Å ²)	24.4	Xtrriage
Anisotropy	1.014	Xtrriage
Bulk solvent k_{sol} (e/Å ³), B_{sol} (Å ²)	0.41 , 63.9	EDS
L-test for twinning ²	$\langle L \rangle = 0.48$, $\langle L^2 \rangle = 0.31$	Xtrriage
Estimated twinning fraction	0.007 for k,h,-l	Xtrriage
F_o, F_c correlation	0.94	EDS
Total number of atoms	4069	wwPDB-VP
Average B, all atoms (Å ²)	37.0	wwPDB-VP

Xtrriage's analysis on translational NCS is as follows: *The largest off-origin peak in the Patterson function is 4.32% of the height of the origin peak. No significant pseudotranslation is detected.*

¹Intensities estimated from amplitudes.

²Theoretical values of $\langle |L| \rangle$, $\langle L^2 \rangle$ for acentric reflections are 0.5, 0.333 respectively for untwinned datasets, and 0.375, 0.2 for perfectly twinned datasets.

5 Model quality [i](#)

5.1 Standard geometry [i](#)

Bond lengths and bond angles in the following residue types are not validated in this section: HEM, BHF

The Z score for a bond length (or angle) is the number of standard deviations the observed value is removed from the expected value. A bond length (or angle) with $|Z| > 5$ is considered an outlier worth inspection. RMSZ is the root-mean-square of all Z scores of the bond lengths (or angles).

Mol	Chain	Bond lengths		Bond angles	
		RMSZ	# Z >5	RMSZ	# Z >5
1	A	0.88	0/3946	0.93	10/5353 (0.2%)

There are no bond length outliers.

All (10) bond angle outliers are listed below:

Mol	Chain	Res	Type	Atoms	Z	Observed(°)	Ideal(°)
1	A	456	ARG	NE-CZ-NH2	-11.11	114.75	120.30
1	A	243	ARG	NE-CZ-NH1	8.08	124.34	120.30
1	A	382	LEU	CA-CB-CG	-7.87	97.19	115.30
1	A	392	ARG	NE-CZ-NH2	-7.80	116.40	120.30
1	A	243	ARG	NE-CZ-NH2	-7.59	116.51	120.30
1	A	456	ARG	NE-CZ-NH1	5.85	123.22	120.30
1	A	392	ARG	CG-CD-NE	-5.46	100.33	111.80
1	A	463	LEU	CA-CB-CG	5.44	127.82	115.30
1	A	108	ARG	NE-CZ-NH2	-5.36	117.62	120.30
1	A	401	ILE	CG1-CB-CG2	-5.17	100.02	111.40

There are no chirality outliers.

There are no planarity outliers.

5.2 Too-close contacts [i](#)

In the following table, the Non-H and H(model) columns list the number of non-hydrogen atoms and hydrogen atoms in the chain respectively. The H(added) column lists the number of hydrogen atoms added and optimized by MolProbity. The Clashes column lists the number of clashes within the asymmetric unit, whereas Symm-Clashes lists symmetry-related clashes.

Mol	Chain	Non-H	H(model)	H(added)	Clashes	Symm-Clashes
1	A	3845	0	3852	118	0

Continued on next page...

Continued from previous page...

Mol	Chain	Non-H	H(model)	H(added)	Clashes	Symm-Clashes
2	A	43	0	30	2	0
3	A	21	0	12	0	0
4	A	160	0	0	7	0
All	All	4069	0	3894	118	0

The all-atom clashscore is defined as the number of clashes found per 1000 atoms (including hydrogen atoms). The all-atom clashscore for this structure is 15.

All (118) close contacts within the same asymmetric unit are listed below, sorted by their clash magnitude.

Atom-1	Atom-2	Interatomic distance (Å)	Clash overlap (Å)
1:A:353:ARG:HH11	1:A:353:ARG:HB2	1.25	0.98
1:A:382:LEU:HD13	2:A:900:HEM:HMB1	1.55	0.88
1:A:478:GLN:HB3	1:A:511:ARG:HH12	1.41	0.83
1:A:104:ASP:OD2	1:A:394:THR:HG21	1.78	0.81
1:A:340:GLN:O	1:A:344:GLN:HG3	1.80	0.81
1:A:346:GLU:OE1	1:A:365:LEU:HD12	1.81	0.81
1:A:172:LEU:HD23	1:A:172:LEU:C	2.01	0.80
1:A:430:GLU:HA	1:A:433:LEU:HD13	1.65	0.78
1:A:484:PRO:HG3	1:A:508:GLN:NE2	2.01	0.75
1:A:86:LEU:HD22	1:A:401:ILE:HD13	1.70	0.74
1:A:415:ASN:HD21	1:A:448:MET:CE	2.01	0.73
1:A:417:ASP:HB3	1:A:420:LEU:HB2	1.72	0.72
1:A:364:GLN:C	1:A:366:PRO:HD3	2.10	0.72
1:A:74:ASP:HB3	1:A:90:ARG:HG3	1.72	0.71
1:A:190:ASN:HD22	1:A:503:ARG:HH12	1.36	0.70
1:A:240:PRO:O	1:A:243:ARG:HG2	1.92	0.70
1:A:353:ARG:HB2	1:A:353:ARG:NH1	2.06	0.67
1:A:415:ASN:ND2	1:A:448:MET:HE3	2.10	0.66
1:A:415:ASN:ND2	1:A:448:MET:CE	2.59	0.66
1:A:448:MET:HE1	1:A:449:MET:C	2.18	0.63
1:A:442:LYS:O	1:A:446:GLU:HG2	1.98	0.63
1:A:66:SER:OG	1:A:413:GLN:HG2	1.98	0.63
1:A:95:ARG:NH1	1:A:100:ARG:NH1	2.47	0.62
1:A:440:ILE:HG22	1:A:442:LYS:HD2	1.82	0.62
1:A:336:LYS:HG2	1:A:339:ILE:HD12	1.82	0.61
1:A:124:THR:CG2	1:A:386:ILE:HD12	2.30	0.61
1:A:335:THR:HG22	4:A:695:HOH:O	2.00	0.61
1:A:276:ASP:OD2	1:A:278:ASN:HB2	2.00	0.60
1:A:415:ASN:HD21	1:A:448:MET:HE3	1.66	0.60
1:A:138:ARG:NH2	4:A:737:HOH:O	2.34	0.59

Continued on next page...

Continued from previous page...

Atom-1	Atom-2	Interatomic distance (Å)	Clash overlap (Å)
1:A:252:ARG:NH1	4:A:750:HOH:O	2.36	0.59
1:A:99:VAL:CG2	1:A:453:MET:HG2	2.33	0.59
1:A:172:LEU:HD22	1:A:475:LEU:CD1	2.33	0.59
1:A:470:LEU:O	1:A:474:ILE:HG12	2.02	0.58
1:A:100:ARG:NH1	4:A:743:HOH:O	2.36	0.58
1:A:353:ARG:HH11	1:A:353:ARG:CB	2.07	0.58
1:A:335:THR:HG22	1:A:335:THR:O	2.03	0.57
1:A:89:SER:O	1:A:413:GLN:NE2	2.37	0.56
1:A:172:LEU:CD2	1:A:475:LEU:HD11	2.35	0.56
1:A:76:LEU:HD12	1:A:76:LEU:C	2.27	0.55
1:A:172:LEU:C	1:A:172:LEU:CD2	2.74	0.55
1:A:478:GLN:HB3	1:A:511:ARG:NH1	2.18	0.54
1:A:151:SER:HA	1:A:159:CYS:HA	1.90	0.54
1:A:172:LEU:HD23	1:A:172:LEU:O	2.08	0.53
1:A:172:LEU:HD22	1:A:475:LEU:HD11	1.90	0.53
1:A:51:LEU:HD23	1:A:55:LEU:HG	1.91	0.53
1:A:241:ILE:CG2	1:A:242:LEU:N	2.72	0.53
1:A:236:LEU:HD13	1:A:250:LEU:HD13	1.90	0.53
1:A:364:GLN:O	1:A:366:PRO:HD3	2.08	0.53
1:A:68:MET:HE1	1:A:78:ILE:HG22	1.91	0.53
1:A:395:THR:HA	1:A:399:PHE:O	2.08	0.52
1:A:463:LEU:C	1:A:463:LEU:HD12	2.29	0.52
1:A:426:GLU:OE1	1:A:428:ARG:HD3	2.10	0.52
1:A:357:PRO:HD2	1:A:474:ILE:HD13	1.91	0.51
1:A:511:ARG:NH1	1:A:511:ARG:HG2	2.24	0.51
1:A:104:ASP:OD2	1:A:394:THR:CG2	2.55	0.51
1:A:99:VAL:HG23	1:A:453:MET:HG2	1.92	0.51
1:A:227:VAL:HG22	1:A:497:LEU:HB3	1.93	0.50
1:A:168:GLU:HG3	1:A:195:SER:HB3	1.93	0.50
1:A:138:ARG:CZ	4:A:737:HOH:O	2.59	0.50
1:A:170:LYS:HE2	1:A:356:ARG:NE	2.26	0.50
1:A:158:SER:HB3	1:A:162:GLU:OE1	2.11	0.50
1:A:86:LEU:CD2	1:A:401:ILE:HD13	2.41	0.49
1:A:471:PHE:O	1:A:475:LEU:HB2	2.12	0.49
1:A:440:ILE:O	1:A:442:LYS:HD2	2.11	0.49
1:A:351:ILE:HD11	1:A:365:LEU:HD21	1.93	0.49
1:A:45:PRO:HG2	1:A:68:MET:CE	2.43	0.49
1:A:162:GLU:OE2	1:A:359:LEU:HB2	2.12	0.49
1:A:210:PRO:HB2	1:A:213:SER:HB2	1.94	0.49
1:A:158:SER:CB	1:A:162:GLU:OE1	2.60	0.49
1:A:45:PRO:HG3	1:A:72:TYR:CE2	2.48	0.48

Continued on next page...

Continued from previous page...

Atom-1	Atom-2	Interatomic distance (Å)	Clash overlap (Å)
1:A:415:ASN:OD1	1:A:448:MET:HE2	2.13	0.48
1:A:436:ASP:CG	1:A:438:THR:HG23	2.34	0.48
1:A:511:ARG:HG2	1:A:511:ARG:HH11	1.79	0.48
1:A:37:LYS:HD3	1:A:38:GLY:N	2.29	0.47
1:A:49:PRO:O	1:A:50:LEU:HB2	2.13	0.47
1:A:90:ARG:HH22	1:A:419:GLU:CD	2.17	0.47
1:A:34:ARG:HA	4:A:752:HOH:O	2.14	0.47
1:A:74:ASP:HB3	1:A:90:ARG:CG	2.40	0.47
1:A:104:ASP:CG	1:A:394:THR:HG21	2.35	0.47
1:A:212:SER:HB2	4:A:717:HOH:O	2.16	0.46
1:A:511:ARG:HH11	1:A:511:ARG:CG	2.28	0.46
1:A:75:VAL:HG23	1:A:93:THR:HG21	1.99	0.45
1:A:368:LEU:HD23	1:A:469:PHE:CE2	2.52	0.45
1:A:122:SER:OG	1:A:125:PHE:HB2	2.17	0.45
1:A:374:GLU:HA	1:A:374:GLU:OE1	2.17	0.45
1:A:95:ARG:HD3	1:A:100:ARG:NH2	2.32	0.44
1:A:433:LEU:HD12	1:A:433:LEU:N	2.32	0.44
1:A:335:THR:O	1:A:336:LYS:HD2	2.17	0.44
1:A:348:ASP:O	1:A:352:GLY:HA2	2.17	0.44
1:A:148:SER:CB	1:A:463:LEU:HD22	2.48	0.44
1:A:256:PHE:CD2	1:A:256:PHE:C	2.91	0.44
1:A:65:LEU:HA	1:A:65:LEU:HD23	1.83	0.43
1:A:431:ARG:O	1:A:444:LEU:HD23	2.18	0.43
1:A:170:LYS:HE2	1:A:356:ARG:CZ	2.49	0.42
1:A:61:PRO:HD2	1:A:495:TYR:CD1	2.54	0.42
1:A:138:ARG:HH11	1:A:138:ARG:HG3	1.84	0.42
1:A:403:LYS:HG2	1:A:404:LYS:HG3	2.00	0.42
1:A:189:TYR:O	1:A:193:VAL:HG23	2.19	0.42
1:A:362:ARG:HG3	1:A:469:PHE:CD2	2.55	0.42
1:A:106:LYS:HD3	1:A:455:LYS:HD3	2.01	0.41
1:A:505:GLU:H	1:A:505:GLU:CD	2.23	0.41
1:A:40:LYS:HE3	1:A:40:LYS:HB2	1.93	0.41
1:A:68:MET:CE	1:A:78:ILE:HG22	2.49	0.41
1:A:188:PRO:O	1:A:192:VAL:HG23	2.19	0.41
1:A:410:ASN:CG	1:A:413:GLN:HB2	2.41	0.41
1:A:220:VAL:HB	1:A:319:PHE:CZ	2.55	0.41
1:A:367:TYR:HD1	1:A:433:LEU:HD21	1.85	0.41
1:A:152:ASP:OD1	1:A:153:PRO:N	2.53	0.41
1:A:484:PRO:HA	1:A:485:PRO:HD3	1.96	0.41
1:A:208:HIS:HE2	1:A:274:ASP:HB2	1.86	0.40
1:A:45:PRO:HG3	1:A:72:TYR:CZ	2.56	0.40

Continued on next page...

Continued from previous page...

Atom-1	Atom-2	Interatomic distance (Å)	Clash overlap (Å)
1:A:172:LEU:HD21	1:A:475:LEU:HD11	2.02	0.40
1:A:190:ASN:ND2	1:A:503:ARG:HH12	2.12	0.40
1:A:333:LEU:HD21	1:A:343:ILE:HD12	2.02	0.40
1:A:138:ARG:HG3	1:A:138:ARG:NH1	2.36	0.40
1:A:382:LEU:HD22	2:A:900:HEM:HMA2	2.03	0.40
1:A:353:ARG:O	1:A:353:ARG:HG3	2.21	0.40

There are no symmetry-related clashes.

5.3 Torsion angles [i](#)

5.3.1 Protein backbone [i](#)

In the following table, the Percentiles column shows the percent Ramachandran outliers of the chain as a percentile score with respect to all X-ray entries followed by that with respect to entries of similar resolution.

The Analysed column shows the number of residues for which the backbone conformation was analysed, and the total number of residues.

Mol	Chain	Analysed	Favoured	Allowed	Outliers	Percentiles
1	A	478/495 (97%)	455 (95%)	22 (5%)	1 (0%)	47 38

All (1) Ramachandran outliers are listed below:

Mol	Chain	Res	Type
1	A	422	GLU

5.3.2 Protein sidechains [i](#)

In the following table, the Percentiles column shows the percent sidechain outliers of the chain as a percentile score with respect to all X-ray entries followed by that with respect to entries of similar resolution.

The Analysed column shows the number of residues for which the sidechain conformation was analysed, and the total number of residues.

Mol	Chain	Analysed	Rotameric	Outliers	Percentiles
1	A	425/438 (97%)	399 (94%)	26 (6%)	18 7

All (26) residues with a non-rotameric sidechain are listed below:

Mol	Chain	Res	Type
1	A	37	LYS
1	A	46	TRP
1	A	141	GLN
1	A	172	LEU
1	A	190	ASN
1	A	216	MET
1	A	227	VAL
1	A	243	ARG
1	A	246	PRO
1	A	264	LEU
1	A	298	SER
1	A	348	ASP
1	A	353	ARG
1	A	365	LEU
1	A	382	LEU
1	A	392	ARG
1	A	413	GLN
1	A	428	ARG
1	A	440	ILE
1	A	442	LYS
1	A	448	MET
1	A	463	LEU
1	A	470	LEU
1	A	471	PHE
1	A	505	GLU
1	A	511	ARG

Sometimes sidechains can be flipped to improve hydrogen bonding and reduce clashes. There are no such sidechains identified.

5.3.3 RNA ⓘ

There are no RNA molecules in this entry.

5.4 Non-standard residues in protein, DNA, RNA chains ⓘ

There are no non-standard protein/DNA/RNA residues in this entry.

5.5 Carbohydrates [i](#)

There are no monosaccharides in this entry.

5.6 Ligand geometry [i](#)

2 ligands are modelled in this entry.

In the following table, the Counts columns list the number of bonds (or angles) for which Mogul statistics could be retrieved, the number of bonds (or angles) that are observed in the model and the number of bonds (or angles) that are defined in the Chemical Component Dictionary. The Link column lists molecule types, if any, to which the group is linked. The Z score for a bond length (or angle) is the number of standard deviations the observed value is removed from the expected value. A bond length (or angle) with $|Z| > 2$ is considered an outlier worth inspection. RMSZ is the root-mean-square of all Z scores of the bond lengths (or angles).

Mol	Type	Chain	Res	Link	Bond lengths			Bond angles		
					Counts	RMSZ	# Z > 2	Counts	RMSZ	# Z > 2
2	HEM	A	900	1	41,50,50	2.32	18 (43%)	45,82,82	2.05	11 (24%)
3	BHF	A	800	-	22,24,24	1.01	0	23,34,34	1.50	5 (21%)

In the following table, the Chirals column lists the number of chiral outliers, the number of chiral centers analysed, the number of these observed in the model and the number defined in the Chemical Component Dictionary. Similar counts are reported in the Torsion and Rings columns. '-' means no outliers of that kind were identified.

Mol	Type	Chain	Res	Link	Chirals	Torsions	Rings
2	HEM	A	900	1	-	1/12/54/54	-
3	BHF	A	800	-	-	0/0/4/4	0/4/4/4

All (18) bond length outliers are listed below:

Mol	Chain	Res	Type	Atoms	Z	Observed(Å)	Ideal(Å)
2	A	900	HEM	C1D-ND	-4.64	1.29	1.38
2	A	900	HEM	CMA-C3A	4.59	1.61	1.51
2	A	900	HEM	C4D-ND	-4.53	1.32	1.40
2	A	900	HEM	C3C-CAC	-4.23	1.39	1.47
2	A	900	HEM	CBB-CAB	4.00	1.50	1.30
2	A	900	HEM	CBD-CGD	3.58	1.58	1.50
2	A	900	HEM	FE-NB	2.98	2.11	1.96
2	A	900	HEM	FE-ND	2.97	2.11	1.96
2	A	900	HEM	C4B-NB	-2.93	1.32	1.38
2	A	900	HEM	C1B-NB	-2.86	1.35	1.40
2	A	900	HEM	O2A-CGA	-2.81	1.21	1.30

Continued on next page...

Continued from previous page...

Mol	Chain	Res	Type	Atoms	Z	Observed(Å)	Ideal(Å)
2	A	900	HEM	CBD-CAD	2.33	1.59	1.52
2	A	900	HEM	CAB-C3B	-2.32	1.41	1.47
2	A	900	HEM	O1D-CGD	2.24	1.29	1.22
2	A	900	HEM	CMC-C2C	2.18	1.56	1.51
2	A	900	HEM	C3B-C2B	2.14	1.41	1.37
2	A	900	HEM	CMD-C2D	2.08	1.55	1.50
2	A	900	HEM	C2C-C1C	-2.04	1.37	1.42

All (16) bond angle outliers are listed below:

Mol	Chain	Res	Type	Atoms	Z	Observed(°)	Ideal(°)
2	A	900	HEM	C4C-CHD-C1D	8.34	133.56	122.56
2	A	900	HEM	C4B-CHC-C1C	4.35	128.29	122.56
3	A	800	BHF	C10-C19-C18	3.45	122.00	120.20
2	A	900	HEM	C4D-ND-C1D	3.31	108.49	105.07
2	A	900	HEM	C2C-C3C-C4C	-3.26	104.62	106.90
3	A	800	BHF	C17-C18-C19	-3.14	120.14	122.59
2	A	900	HEM	CBA-CAA-C2A	3.00	117.74	112.62
2	A	900	HEM	CMC-C2C-C3C	2.74	129.81	124.68
2	A	900	HEM	C4B-C3B-C2B	-2.57	105.08	107.11
2	A	900	HEM	C3B-C2B-C1B	-2.54	104.60	106.49
2	A	900	HEM	O2A-CGA-O1A	-2.51	117.04	123.30
3	A	800	BHF	O1-C19-C10	-2.51	118.78	121.20
2	A	900	HEM	O2A-CGA-CBA	2.49	122.03	114.03
3	A	800	BHF	C10-C9-C8	-2.31	120.49	123.05
2	A	900	HEM	CHC-C4B-NB	-2.22	122.02	124.43
3	A	800	BHF	C2-C1-C6	2.08	120.49	118.65

There are no chirality outliers.

All (1) torsion outliers are listed below:

Mol	Chain	Res	Type	Atoms
2	A	900	HEM	CAA-CBA-CGA-O1A

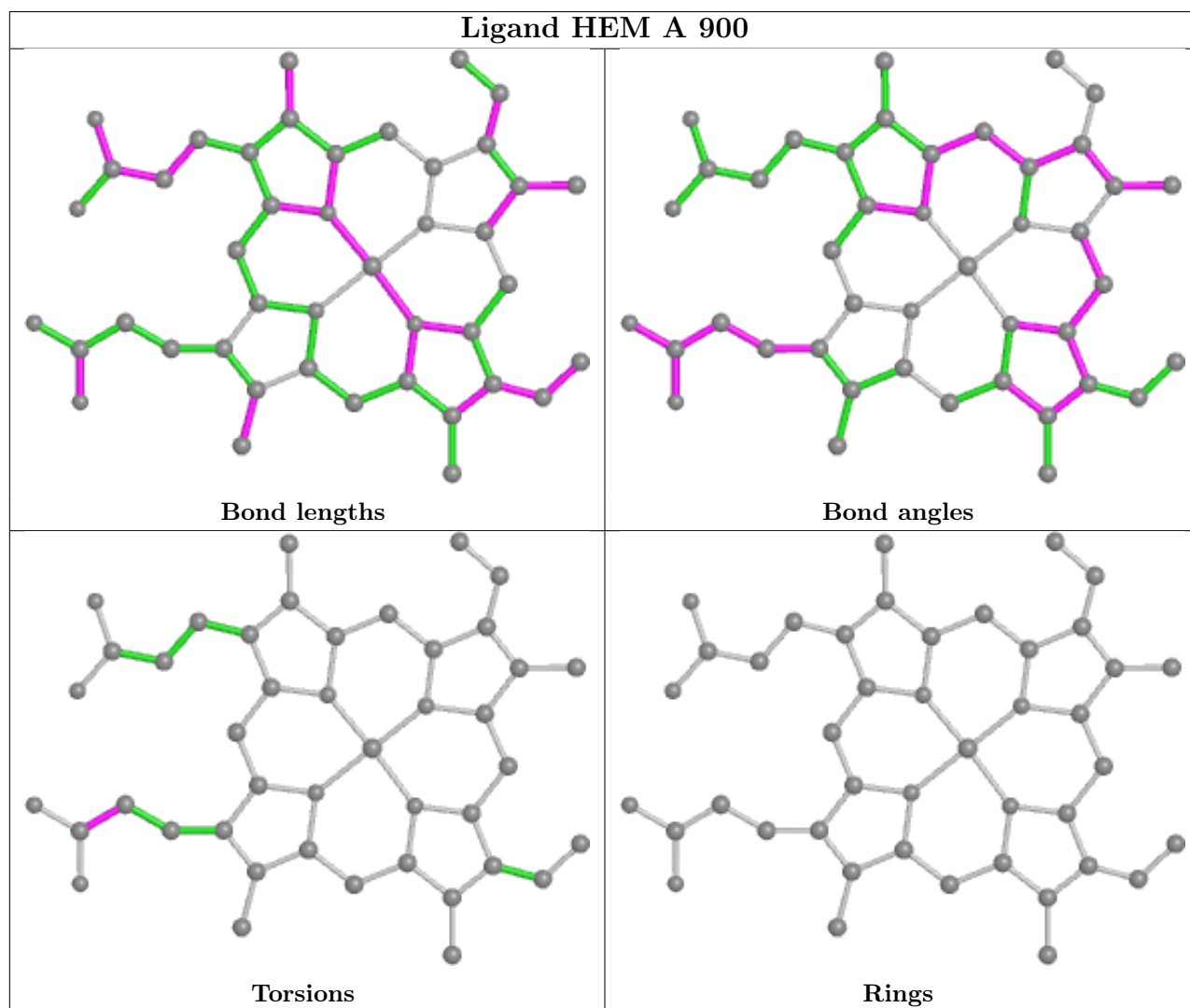
There are no ring outliers.

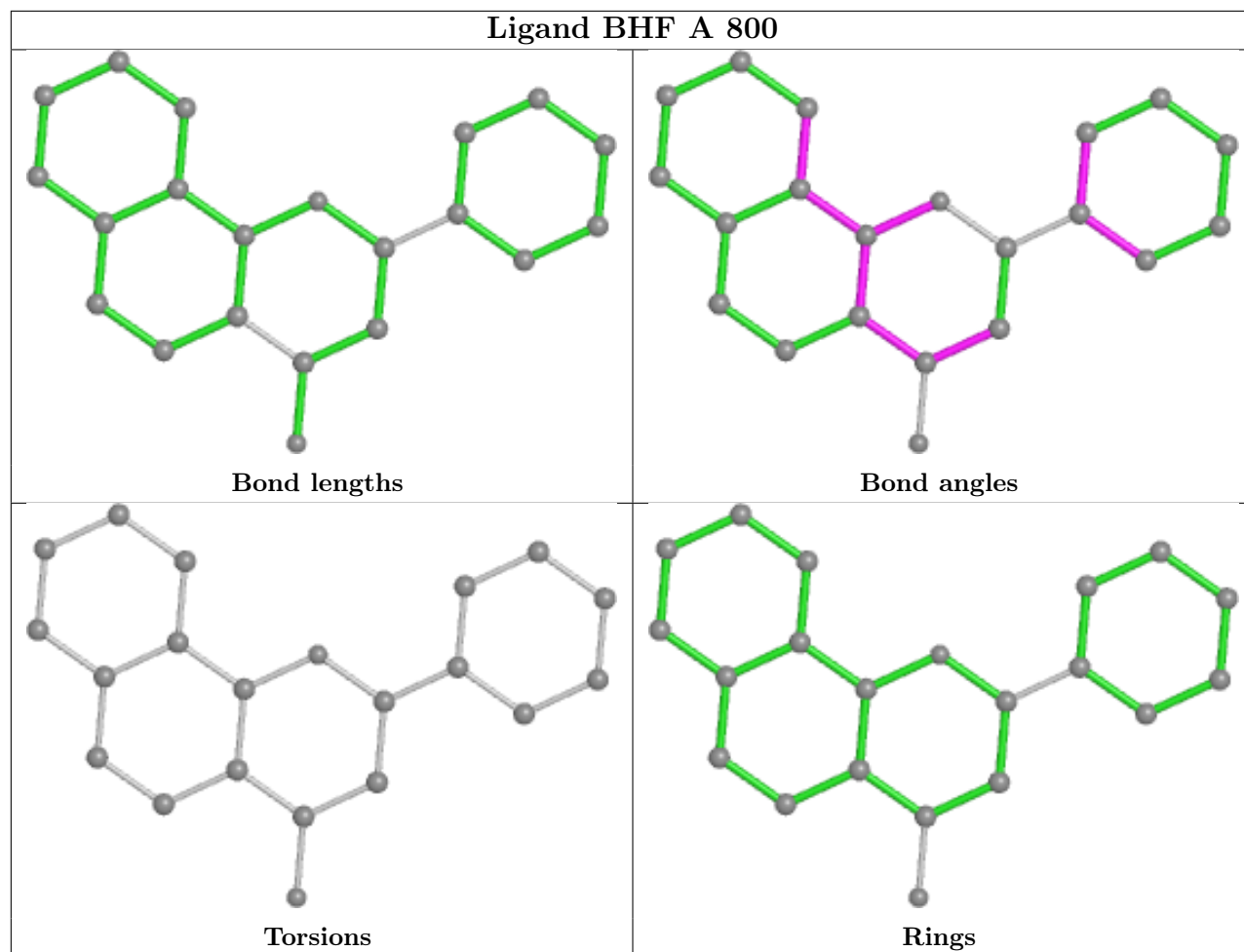
1 monomer is involved in 2 short contacts:

Mol	Chain	Res	Type	Clashes	Symm-Clashes
2	A	900	HEM	2	0

The following is a two-dimensional graphical depiction of Mogul quality analysis of bond lengths,

bond angles, torsion angles, and ring geometry for all instances of the Ligand of Interest. In addition, ligands with molecular weight > 250 and outliers as shown on the validation Tables will also be included. For torsion angles, if less than 5% of the Mogul distribution of torsion angles is within 10 degrees of the torsion angle in question, then that torsion angle is considered an outlier. Any bond that is central to one or more torsion angles identified as an outlier by Mogul will be highlighted in the graph. For rings, the root-mean-square deviation (RMSD) between the ring in question and similar rings identified by Mogul is calculated over all ring torsion angles. If the average RMSD is greater than 60 degrees and the minimal RMSD between the ring in question and any Mogul-identified rings is also greater than 60 degrees, then that ring is considered an outlier. The outliers are highlighted in purple. The color gray indicates Mogul did not find sufficient equivalents in the CSD to analyse the geometry.





5.7 Other polymers [i](#)

There are no such residues in this entry.

5.8 Polymer linkage issues [i](#)

There are no chain breaks in this entry.

6 Fit of model and data

6.1 Protein, DNA and RNA chains

In the following table, the column labelled ‘#RSRZ> 2’ contains the number (and percentage) of RSRZ outliers, followed by percent RSRZ outliers for the chain as percentile scores relative to all X-ray entries and entries of similar resolution. The OWAB column contains the minimum, median, 95th percentile and maximum values of the occupancy-weighted average B-factor per residue. The column labelled ‘Q< 0.9’ lists the number of (and percentage) of residues with an average occupancy less than 0.9.

Mol	Chain	Analysed	<RSRZ>	#RSRZ>2	OWAB(Å ²)	Q<0.9
1	A	480/495 (96%)	0.69	52 (10%) 5 9	18, 34, 62, 86	0

All (52) RSRZ outliers are listed below:

Mol	Chain	Res	Type	RSRZ
1	A	513	SER	8.6
1	A	155	SER	7.5
1	A	157	SER	6.6
1	A	46	TRP	6.5
1	A	154	ALA	6.3
1	A	272	TYR	5.5
1	A	156	SER	5.4
1	A	153	PRO	5.1
1	A	278	ASN	4.8
1	A	274	ASP	4.5
1	A	354	GLU	4.2
1	A	434	THR	3.8
1	A	212	SER	3.5
1	A	270	GLU	3.5
1	A	348	ASP	3.3
1	A	277	LYS	3.2
1	A	273	GLN	3.2
1	A	384	PHE	3.2
1	A	241	ILE	3.2
1	A	88	LEU	3.1
1	A	269	GLN	3.1
1	A	423	ASP	3.1
1	A	426	GLU	3.1
1	A	262	TRP	3.0
1	A	330	LEU	2.9
1	A	382	LEU	2.9
1	A	49	PRO	2.8

Continued on next page...

Continued from previous page...

Mol	Chain	Res	Type	RSRZ
1	A	158	SER	2.8
1	A	419	GLU	2.7
1	A	472	LEU	2.7
1	A	326	ILE	2.7
1	A	350	VAL	2.6
1	A	512	PHE	2.6
1	A	417	ASP	2.6
1	A	314	ILE	2.5
1	A	468	ILE	2.5
1	A	214	ASP	2.5
1	A	322	VAL	2.5
1	A	152	ASP	2.5
1	A	52	GLY	2.4
1	A	321	THR	2.4
1	A	475	LEU	2.3
1	A	409	VAL	2.3
1	A	497	LEU	2.2
1	A	383	PRO	2.2
1	A	50	LEU	2.2
1	A	420	LEU	2.2
1	A	476	LEU	2.2
1	A	47	GLY	2.1
1	A	446	GLU	2.1
1	A	48	TRP	2.1
1	A	381	PHE	2.1

6.2 Non-standard residues in protein, DNA, RNA chains [i](#)

There are no non-standard protein/DNA/RNA residues in this entry.

6.3 Carbohydrates [i](#)

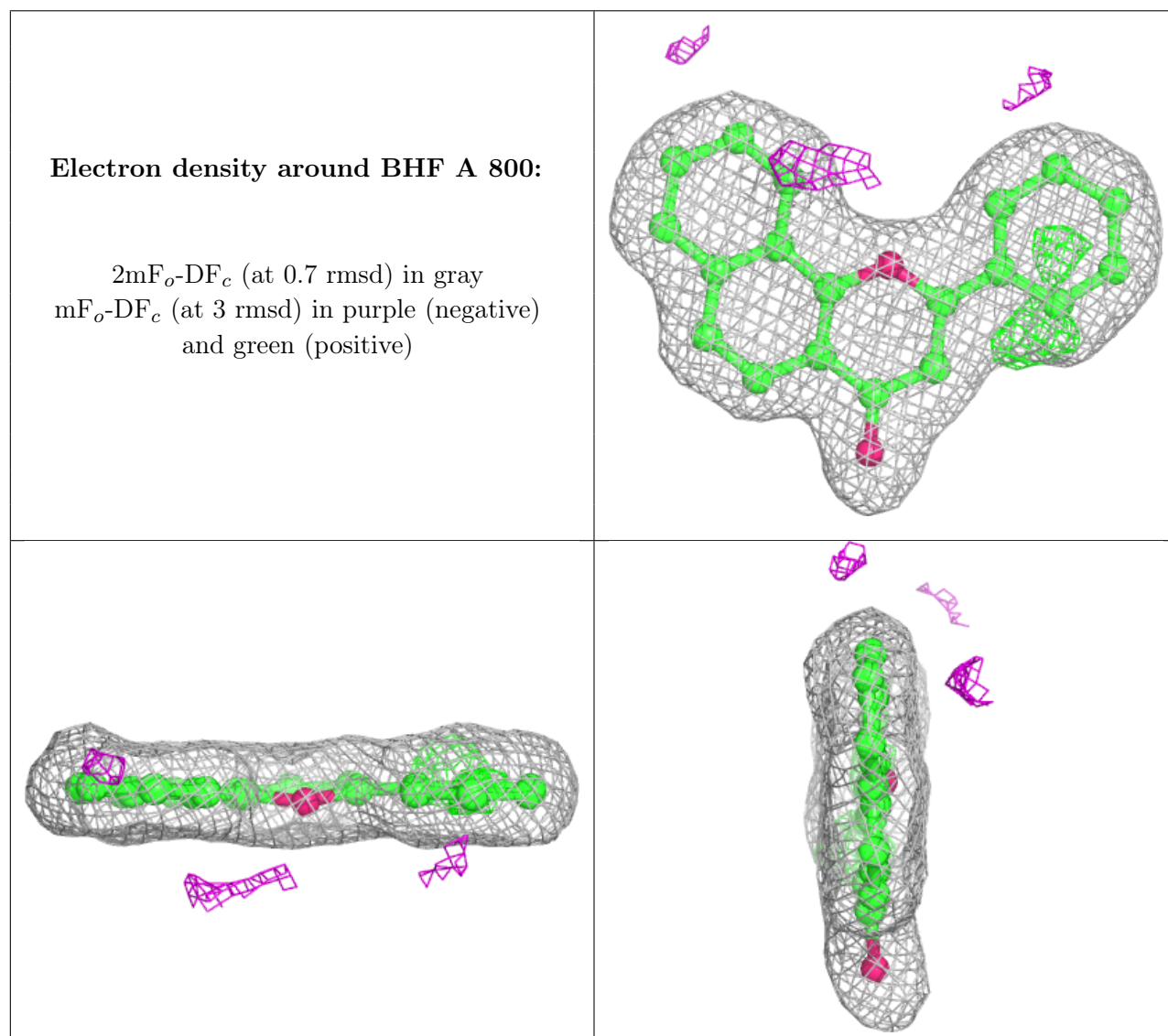
There are no monosaccharides in this entry.

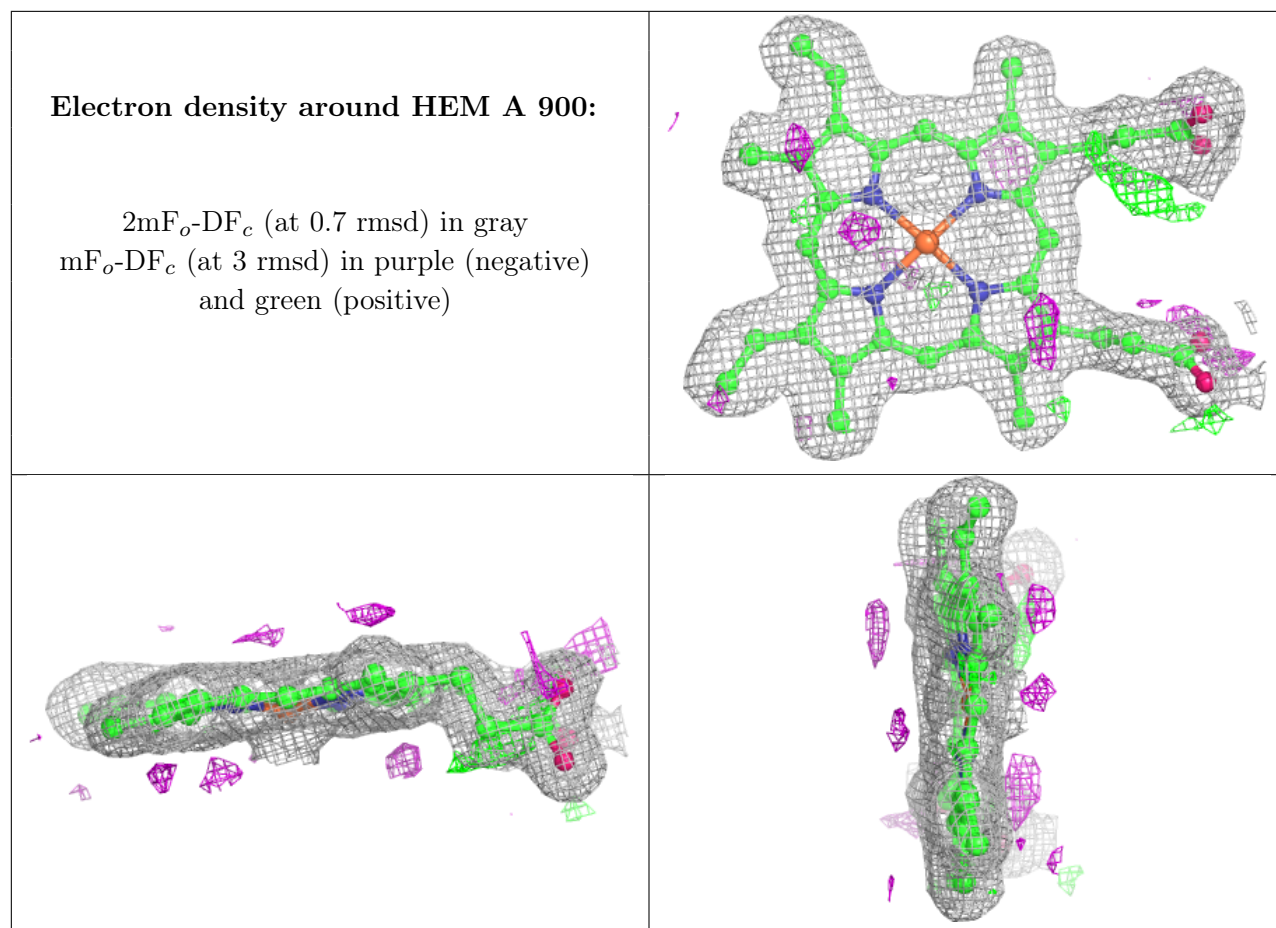
6.4 Ligands [i](#)

In the following table, the Atoms column lists the number of modelled atoms in the group and the number defined in the chemical component dictionary. The B-factors column lists the minimum, median, 95th percentile and maximum values of B factors of atoms in the group. The column labelled 'Q< 0.9' lists the number of atoms with occupancy less than 0.9.

Mol	Type	Chain	Res	Atoms	RSCC	RSR	B-factors(\AA^2)	Q<0.9
3	BHF	A	800	21/21	0.93	0.23	15,24,31,32	0
2	HEM	A	900	43/43	0.96	0.19	15,22,30,39	0

The following is a graphical depiction of the model fit to experimental electron density of all instances of the Ligand of Interest. In addition, ligands with molecular weight > 250 and outliers as shown on the geometry validation Tables will also be included. Each fit is shown from different orientation to approximate a three-dimensional view.





6.5 Other polymers [i](#)

There are no such residues in this entry.