



Full wwPDB X-ray Structure Validation Report ⓘ

Mar 13, 2026 – 09:37 AM UTC

PDB ID : 2C81 / pdb_00002c81
Title : Crystal structures of the PLP- and PMP-bound forms of BtrR, a dual functional aminotransferase involved in butirosin biosynthesis.
Authors : Popovic, B.; Tang, X.; Chirgadze, D.Y.; Huang, F.; Blundell, T.L.; Spencer, J.B.
Deposited on : 2005-11-30
Resolution : 1.70 Å(reported)

This is a Full wwPDB X-ray Structure Validation Report for a publicly released PDB entry.

We welcome your comments at validation@mail.wwpdb.org

A user guide is available at

<https://www.wwpdb.org/validation/2017/XrayValidationReportHelp>

with specific help available everywhere you see the ⓘ symbol.

The types of validation reports are described at

<http://www.wwpdb.org/validation/2017/FAQs#types>.

The following versions of software and data (see [references ⓘ](#)) were used in the production of this report:

MolProbity : 4-5-2 with Phenix2.0
Mogul : 2022.3.0, CSD as543be (2022)
Xtrriage (Phenix) : **NOT EXECUTED**
EDS : **NOT EXECUTED**
Percentile statistics : 20250101.v01 (using entries in the PDB archive January 1st 2025)
Ideal geometry (proteins) : Engh & Huber (2001)
Ideal geometry (DNA, RNA) : Parkinson et al. (1996)
Validation Pipeline (wwPDB-VP) : 2.49

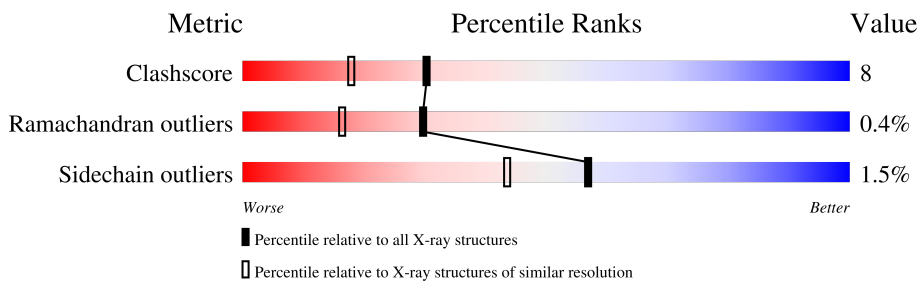
1 Overall quality at a glance

The following experimental techniques were used to determine the structure:

X-RAY DIFFRACTION

The reported resolution of this entry is 1.70 Å.

Percentile scores (ranging between 0-100) for global validation metrics of the entry are shown in the following graphic. The table shows the number of entries on which the scores are based.



Metric	Whole archive (#Entries)	Similar resolution (#Entries, resolution range(Å))
Clashscore	190562	5924 (1.70-1.70)
Ramachandran outliers	187476	5846 (1.70-1.70)
Sidechain outliers	187428	5846 (1.70-1.70)

The table below summarises the geometric issues observed across the polymeric chains and their fit to the electron density. The red, orange, yellow and green segments of the lower bar indicate the fraction of residues that contain outliers for ≥ 3 , 2, 1 and 0 types of geometric quality criteria respectively. A grey segment represents the fraction of residues that are not modelled. The numeric value for each fraction is indicated below the corresponding segment, with a dot representing fractions $\leq 5\%$.

Note EDS was not executed.

Mol	Chain	Length	Quality of chain
1	A	418	78% 19% ..

2 Entry composition [i](#)

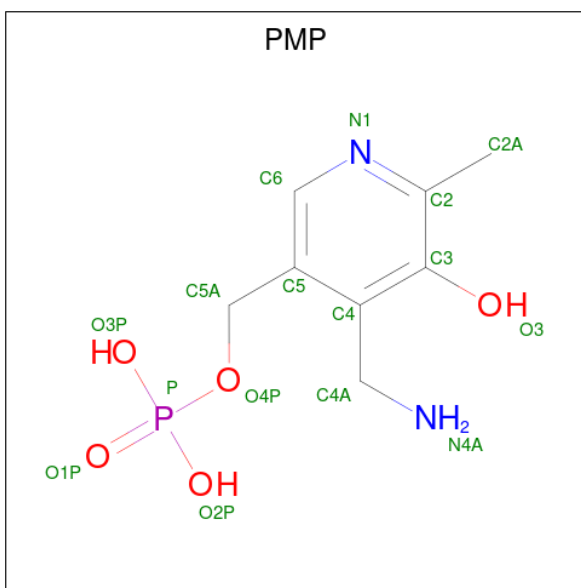
There are 3 unique types of molecules in this entry. The entry contains 3607 atoms, of which 0 are hydrogens and 0 are deuteriums.

In the tables below, the ZeroOcc column contains the number of atoms modelled with zero occupancy, the AltConf column contains the number of residues with at least one atom in alternate conformation and the Trace column contains the number of residues modelled with at most 2 atoms.

- Molecule 1 is a protein called GLUTAMINE-2-DEOXY-SCYLLO-INOSOSE AMINO-TRANSFERASE.

Mol	Chain	Residues	Atoms					ZeroOcc	AltConf	Trace
			Total	C	N	O	S			
1	A	409	3196	2036	548	595	17	0	0	1

- Molecule 2 is 4'-DEOXY-4'-AMINOPYRIDOXAL-5'-PHOSPHATE (CCD ID: PMP) (formula: C₈H₁₃N₂O₅P).



Mol	Chain	Residues	Atoms					ZeroOcc	AltConf
			Total	C	N	O	P		
2	A	1	16	8	2	5	1	0	0

- Molecule 3 is water.

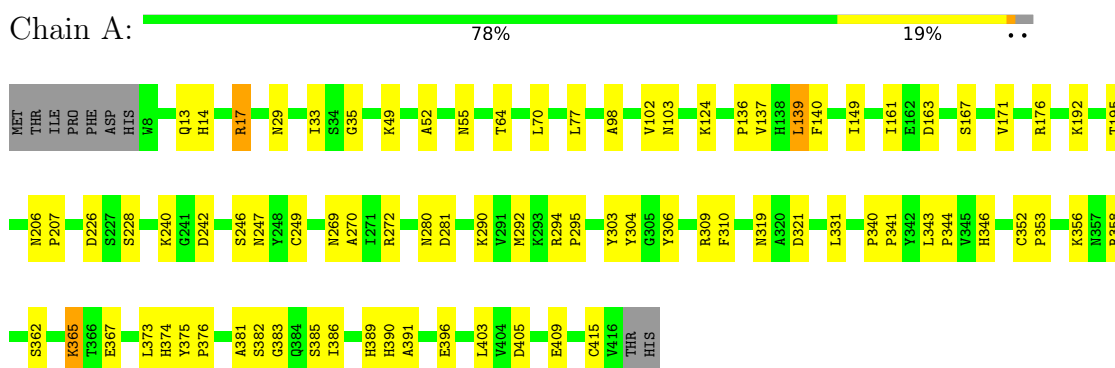
Mol	Chain	Residues	Atoms		ZeroOcc	AltConf
3	A	395	Total	O	0	0
			395	395		

3 Residue-property plots [i](#)

These plots are drawn for all protein, RNA, DNA and oligosaccharide chains in the entry. The first graphic for a chain summarises the proportions of the various outlier classes displayed in the second graphic. The second graphic shows the sequence view annotated by issues in geometry. Residues are color-coded according to the number of geometric quality criteria for which they contain at least one outlier: green = 0, yellow = 1, orange = 2 and red = 3 or more. Stretches of 2 or more consecutive residues without any outlier are shown as a green connector. Residues present in the sample, but not in the model, are shown in grey.

Note EDS was not executed.

- Molecule 1: GLUTAMINE-2-DEOXY-SCYLLO-INOSOSE AMINOTRANSFERASE



4 Data and refinement statistics

Xtrriage (Phenix) and EDS were not executed - this section is therefore incomplete.

Property	Value	Source
Space group	P 32 2 1	Depositor
Cell constants a, b, c, α , β , γ	73.75Å 73.75Å 162.36Å 90.00° 90.00° 120.00°	Depositor
Resolution (Å)	24.37 – 1.70	Depositor
% Data completeness (in resolution range)	91.5 (24.37-1.70)	Depositor
R_{merge}	0.05	Depositor
R_{sym}	(Not available)	Depositor
Refinement program	CNS 1.0	Depositor
R, R_{free}	0.189 , 0.209	Depositor
Estimated twinning fraction	No twinning to report.	Xtrriage
Total number of atoms	3607	wwPDB-VP
Average B, all atoms (Å ²)	22.0	wwPDB-VP

5 Model quality [i](#)

5.1 Standard geometry [i](#)

Bond lengths and bond angles in the following residue types are not validated in this section: PMP

The Z score for a bond length (or angle) is the number of standard deviations the observed value is removed from the expected value. A bond length (or angle) with $|Z| > 5$ is considered an outlier worth inspection. RMSZ is the root-mean-square of all Z scores of the bond lengths (or angles).

Mol	Chain	Bond lengths		Bond angles	
		RMSZ	# Z >5	RMSZ	# Z >5
1	A	0.35	1/3272 (0.0%)	0.87	11/4445 (0.2%)

All (1) bond length outliers are listed below:

Mol	Chain	Res	Type	Atoms	Z	Observed(Å)	Ideal(Å)
1	A	415	CYS	C-N	-5.68	1.25	1.33

All (11) bond angle outliers are listed below:

Mol	Chain	Res	Type	Atoms	Z	Observed(°)	Ideal(°)
1	A	64	THR	N-CA-C	7.31	121.44	112.23
1	A	343	LEU	N-CA-C	-7.23	99.54	110.39
1	A	375	TYR	CA-C-N	7.15	128.78	119.84
1	A	375	TYR	C-N-CA	7.15	128.78	119.84
1	A	304	TYR	N-CA-C	-6.39	104.41	111.82
1	A	365	LYS	CB-CA-C	-6.01	109.63	116.54
1	A	139	LEU	N-CA-C	5.84	118.71	109.96
1	A	381	ALA	N-CA-C	5.63	117.87	111.11
1	A	35	GLY	N-CA-C	-5.29	104.33	112.85
1	A	195	THR	N-CA-C	5.28	117.21	109.24
1	A	319	ASN	N-CA-C	-5.26	102.67	110.46

There are no chirality outliers.

There are no planarity outliers.

5.2 Too-close contacts [i](#)

In the following table, the Non-H and H(model) columns list the number of non-hydrogen atoms and hydrogen atoms in the chain respectively. The H(added) column lists the number of hydrogen

atoms added and optimized by MolProbity. The Clashes column lists the number of clashes within the asymmetric unit, whereas Symm-Clashes lists symmetry-related clashes.

Mol	Chain	Non-H	H(model)	H(added)	Clashes	Symm-Clashes
1	A	3196	0	3119	53	0
2	A	16	0	11	1	0
3	A	395	0	0	17	2
All	All	3607	0	3130	53	2

The all-atom clashscore is defined as the number of clashes found per 1000 atoms (including hydrogen atoms). The all-atom clashscore for this structure is 8.

All (53) close contacts within the same asymmetric unit are listed below, sorted by their clash magnitude.

Atom-1	Atom-2	Interatomic distance (Å)	Clash overlap (Å)
1:A:17:ARG:HH11	1:A:17:ARG:HB3	1.39	0.86
1:A:139:LEU:HB2	3:A:2161:HOH:O	1.79	0.82
1:A:246:SER:HB3	3:A:2260:HOH:O	1.84	0.77
1:A:292:MET:SD	1:A:309:ARG:HD2	2.31	0.70
1:A:270:ALA:HA	3:A:2281:HOH:O	1.94	0.67
1:A:405:ASP:O	1:A:409:GLU:HG3	1.98	0.64
1:A:344:PRO:HD3	3:A:2375:HOH:O	1.98	0.63
1:A:341:PRO:HD2	1:A:382:SER:HA	1.83	0.61
1:A:33:ILE:HD11	1:A:249:CYS:SG	2.42	0.59
1:A:29:ASN:HA	3:A:2032:HOH:O	2.02	0.59
1:A:321:ASP:OD1	1:A:340:PRO:HG2	2.02	0.59
1:A:281:ASP:HB2	3:A:2288:HOH:O	2.02	0.59
1:A:403:LEU:C	1:A:403:LEU:HD13	2.29	0.58
1:A:386:ILE:HD12	1:A:386:ILE:N	2.22	0.55
1:A:374:HIS:CE1	1:A:376:PRO:HG3	2.41	0.55
1:A:192:LYS:HE3	2:A:1416:PMP:N4A	2.22	0.54
1:A:362:SER:O	1:A:365:LYS:HE3	2.08	0.54
1:A:365:LYS:HE2	3:A:2354:HOH:O	2.06	0.53
1:A:171:VAL:HG22	1:A:176:ARG:HD3	1.91	0.53
1:A:303:TYR:O	1:A:390:HIS:HB3	2.10	0.52
1:A:17:ARG:HH11	1:A:17:ARG:CB	2.16	0.51
1:A:389:HIS:CD2	1:A:391:ALA:H	2.28	0.51
1:A:98:ALA:HB2	3:A:2116:HOH:O	2.09	0.51
1:A:137:VAL:HB	3:A:2161:HOH:O	2.10	0.51
1:A:124:LYS:HG3	3:A:2142:HOH:O	2.11	0.50
1:A:331:LEU:HD11	1:A:403:LEU:HD23	1.94	0.49
1:A:13:GLN:HA	3:A:2009:HOH:O	2.13	0.49
1:A:358:ARG:HH11	1:A:358:ARG:HG2	1.78	0.49

Continued on next page...

Continued from previous page...

Atom-1	Atom-2	Interatomic distance (Å)	Clash overlap (Å)
1:A:356:LYS:HG2	1:A:358:ARG:HB3	1.96	0.48
1:A:310:PHE:CD2	1:A:386:ILE:HD11	2.49	0.47
1:A:341:PRO:HG2	1:A:385:SER:HB2	1.97	0.47
1:A:367:GLU:HB3	3:A:2360:HOH:O	2.14	0.46
1:A:269:ASN:HD22	1:A:272:ARG:HH11	1.63	0.46
1:A:136:PRO:HB3	1:A:149:ILE:HD13	1.99	0.45
1:A:102:VAL:O	1:A:103:ASN:HB2	2.16	0.44
1:A:77:LEU:HD12	1:A:161:ILE:HD11	1.98	0.44
1:A:240:LYS:HE3	1:A:242:ASP:OD2	2.18	0.44
1:A:373:LEU:HD21	3:A:2171:HOH:O	2.18	0.44
1:A:206:ASN:HA	1:A:207:PRO:HD3	1.86	0.44
1:A:385:SER:C	1:A:386:ILE:HD12	2.43	0.43
1:A:70:LEU:HD11	1:A:163:ASP:OD2	2.18	0.43
1:A:383:GLY:HA3	3:A:2378:HOH:O	2.18	0.43
1:A:344:PRO:HB2	1:A:346:HIS:CE1	2.54	0.43
1:A:247:ASN:ND2	1:A:249:CYS:H	2.17	0.43
1:A:294:ARG:HA	1:A:295:PRO:HD3	1.90	0.42
1:A:269:ASN:HD22	1:A:269:ASN:HA	1.67	0.42
1:A:226:ASP:OD1	1:A:228:SER:HB2	2.20	0.42
1:A:352:CYS:N	1:A:353:PRO:HD3	2.35	0.41
1:A:52:ALA:CB	3:A:2072:HOH:O	2.68	0.41
1:A:280:ASN:ND2	1:A:306:TYR:OH	2.54	0.41
1:A:14:HIS:CG	3:A:2016:HOH:O	2.74	0.41
1:A:365:LYS:HB3	3:A:2356:HOH:O	2.20	0.41
1:A:49:LYS:C	1:A:49:LYS:HD3	2.46	0.40

All (2) symmetry-related close contacts are listed below. The label for Atom-2 includes the symmetry operator and encoded unit-cell translations to be applied.

Atom-1	Atom-2	Interatomic distance (Å)	Clash overlap (Å)
3:A:2118:HOH:O	3:A:2118:HOH:O[6_765]	1.91	0.29
3:A:2016:HOH:O	3:A:2032:HOH:O[6_765]	2.19	0.01

5.3 Torsion angles [i](#)

5.3.1 Protein backbone [i](#)

In the following table, the Percentiles column shows the percent Ramachandran outliers of the chain as a percentile score with respect to all X-ray entries followed by that with respect to entries of similar resolution.

The Analysed column shows the number of residues for which the backbone conformation was analysed, and the total number of residues.

Mol	Chain	Analysed	Favoured	Allowed	Outliers	Percentiles
1	A	281/418 (67%)	269 (96%)	11 (4%)	1 (0%)	30 16

All (1) Ramachandran outliers are listed below:

Mol	Chain	Res	Type
1	A	140	PHE

5.3.2 Protein sidechains [i](#)

In the following table, the Percentiles column shows the percent sidechain outliers of the chain as a percentile score with respect to all X-ray entries followed by that with respect to entries of similar resolution.

The Analysed column shows the number of residues for which the sidechain conformation was analysed, and the total number of residues.

Mol	Chain	Analysed	Rotameric	Outliers	Percentiles
1	A	341/359 (95%)	336 (98%)	5 (2%)	57 43

All (5) residues with a non-rotameric sidechain are listed below:

Mol	Chain	Res	Type
1	A	17	ARG
1	A	55	ASN
1	A	167	SER
1	A	290	LYS
1	A	396	GLU

Sometimes sidechains can be flipped to improve hydrogen bonding and reduce clashes. All (13) such sidechains are listed below:

Mol	Chain	Res	Type
1	A	55	ASN
1	A	103	ASN
1	A	150	ASN
1	A	157	ASN
1	A	175	GLN
1	A	247	ASN
1	A	269	ASN
1	A	275	ASN

Continued on next page...

Continued from previous page...

Mol	Chain	Res	Type
1	A	280	ASN
1	A	301	GLN
1	A	322	GLN
1	A	332	ASN
1	A	389	HIS

5.3.3 RNA [i](#)

There are no RNA molecules in this entry.

5.4 Non-standard residues in protein, DNA, RNA chains [i](#)

There are no non-standard protein/DNA/RNA residues in this entry.

5.5 Carbohydrates [i](#)

There are no oligosaccharides in this entry.

5.6 Ligand geometry [i](#)

1 ligand is modelled in this entry.

In the following table, the Counts columns list the number of bonds (or angles) for which Mogul statistics could be retrieved, the number of bonds (or angles) that are observed in the model and the number of bonds (or angles) that are defined in the Chemical Component Dictionary. The Link column lists molecule types, if any, to which the group is linked. The Z score for a bond length (or angle) is the number of standard deviations the observed value is removed from the expected value. A bond length (or angle) with $|Z| > 2$ is considered an outlier worth inspection. RMSZ is the root-mean-square of all Z scores of the bond lengths (or angles).

Mol	Type	Chain	Res	Link	Bond lengths			Bond angles		
					Counts	RMSZ	$\# Z > 2$	Counts	RMSZ	$\# Z > 2$
2	PMP	A	1416	-	16,16,16	5.83	10 (62%)	22,23,23	1.75	3 (13%)

In the following table, the Chirals column lists the number of chiral outliers, the number of chiral centers analysed, the number of these observed in the model and the number defined in the Chemical Component Dictionary. Similar counts are reported in the Torsion and Rings columns. '-' means no outliers of that kind were identified.

Mol	Type	Chain	Res	Link	Chirals	Torsions	Rings
2	PMP	A	1416	-	-	2/8/8/8	0/1/1/1

All (10) bond length outliers are listed below:

Mol	Chain	Res	Type	Atoms	Z	Observed(Å)	Ideal(Å)
2	A	1416	PMP	P-O1P	12.38	1.89	1.50
2	A	1416	PMP	C5-C4	10.63	1.55	1.40
2	A	1416	PMP	P-O2P	9.49	1.90	1.54
2	A	1416	PMP	O4P-C5A	-9.08	1.11	1.44
2	A	1416	PMP	P-O3P	6.87	1.80	1.54
2	A	1416	PMP	C2-N1	5.29	1.43	1.33
2	A	1416	PMP	C3-C4	2.70	1.44	1.40
2	A	1416	PMP	C6-N1	2.69	1.39	1.34
2	A	1416	PMP	P-O4P	2.04	1.66	1.60
2	A	1416	PMP	C6-C5	2.03	1.41	1.37

All (3) bond angle outliers are listed below:

Mol	Chain	Res	Type	Atoms	Z	Observed(°)	Ideal(°)
2	A	1416	PMP	O4P-P-O1P	5.27	120.69	106.44
2	A	1416	PMP	C5-C6-N1	-3.58	118.01	123.83
2	A	1416	PMP	C6-N1-C2	2.74	124.16	119.20

There are no chirality outliers.

All (2) torsion outliers are listed below:

Mol	Chain	Res	Type	Atoms
2	A	1416	PMP	C5-C4-C4A-N4A
2	A	1416	PMP	C3-C4-C4A-N4A

There are no ring outliers.

1 monomer is involved in 1 short contact:

Mol	Chain	Res	Type	Clashes	Symm-Clashes
2	A	1416	PMP	1	0

5.7 Other polymers [i](#)

There are no such residues in this entry.

5.8 Polymer linkage issues

There are no chain breaks in this entry.

6 Fit of model and data

6.1 Protein, DNA and RNA chains

EDS was not executed - this section is therefore empty.

6.2 Non-standard residues in protein, DNA, RNA chains

EDS was not executed - this section is therefore empty.

6.3 Carbohydrates

EDS was not executed - this section is therefore empty.

6.4 Ligands

EDS was not executed - this section is therefore empty.

6.5 Other polymers

EDS was not executed - this section is therefore empty.