



Full wwPDB X-ray Structure Validation Report ⓘ

Mar 23, 2026 – 03:38 PM UTC

PDB ID : 2C4M / pdb_00002c4m
Title : Starch phosphorylase: structural studies explain oxyanion-dependent kinetic stability and regulatory control.
Authors : Purvis, A.; Nidetzky, B.; Watson, K.
Deposited on : 2005-10-20
Resolution : 1.90 Å(reported)

This is a Full wwPDB X-ray Structure Validation Report for a publicly released PDB entry.

We welcome your comments at validation@mail.wwpdb.org

A user guide is available at

<https://www.wwpdb.org/validation/2017/XrayValidationReportHelp>

with specific help available everywhere you see the ⓘ symbol.

The types of validation reports are described at

<http://www.wwpdb.org/validation/2017/FAQs#types>.

The following versions of software and data (see [references ⓘ](#)) were used in the production of this report:

MolProbity : **FAILED**
Mogul : 2022.3.0, CSD as543be (2022)
Xtriage (Phenix) : 2.0
EDS : 3.0
Percentile statistics : 20250101.v01 (using entries in the PDB archive January 1st 2025)
CCP4 : 9.0.010 (Gargrove)
Density-Fitness : 1.0.12
Ideal geometry (proteins) : Engh & Huber (2001)
Ideal geometry (DNA, RNA) : Parkinson et al. (1996)
Validation Pipeline (wwPDB-VP) : 2.49

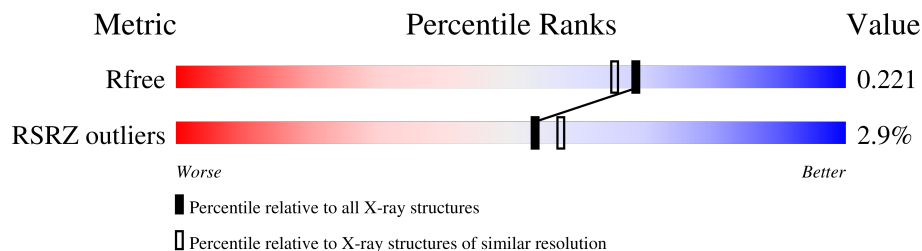
1 Overall quality at a glance

The following experimental techniques were used to determine the structure:

X-RAY DIFFRACTION

The reported resolution of this entry is 1.90 Å.

Percentile scores (ranging between 0-100) for global validation metrics of the entry are shown in the following graphic. The table shows the number of entries on which the scores are based.



Metric	Whole archive (#Entries)	Similar resolution (#Entries, resolution range(Å))
R_{free}	180053	7789 (1.90-1.90)
RSRZ outliers	180081	7790 (1.90-1.90)

MolProbity failed to run properly - the sequence quality summary graphics cannot be shown.

The following table lists non-polymeric compounds, carbohydrate monomers and non-standard residues in protein, DNA, RNA chains that are outliers for geometric or electron-density-fit criteria:

Mol	Type	Chain	Res	Chirality	Geometry	Clashes	Electron density
2	PLP	A	1634	-	X	-	-
2	PLP	C	1634	-	X	-	-
2	PLP	D	1634	-	X	-	-
4	FMT	A	1795	-	X	-	-
4	FMT	A	1796	-	X	-	-
4	FMT	A	1797	-	X	-	-
4	FMT	A	1798	-	X	-	-
4	FMT	A	1799	-	X	-	-
4	FMT	A	1800	-	X	-	-
4	FMT	A	1801	-	X	-	-
4	FMT	A	1802	-	X	-	-
4	FMT	A	1803	-	X	-	-
4	FMT	B	1799	-	X	-	-
4	FMT	B	1800	-	X	-	-
4	FMT	C	1799	-	X	-	-
4	FMT	C	1800	-	X	-	-
4	FMT	C	1801	-	X	-	-
4	FMT	C	1802	-	X	-	-

Continued on next page...

Continued from previous page...

Mol	Type	Chain	Res	Chirality	Geometry	Clashes	Electron density
4	FMT	D	1795	-	X	-	-
4	FMT	D	1796	-	X	-	-
4	FMT	D	1797	-	X	-	-
4	FMT	D	1798	-	X	-	-

2 Entry composition

There are 6 unique types of molecules in this entry. The entry contains 26654 atoms, of which 0 are hydrogens and 0 are deuteriums.

In the tables below, the ZeroOcc column contains the number of atoms modelled with zero occupancy, the AltConf column contains the number of residues with at least one atom in alternate conformation and the Trace column contains the number of residues modelled with at most 2 atoms.

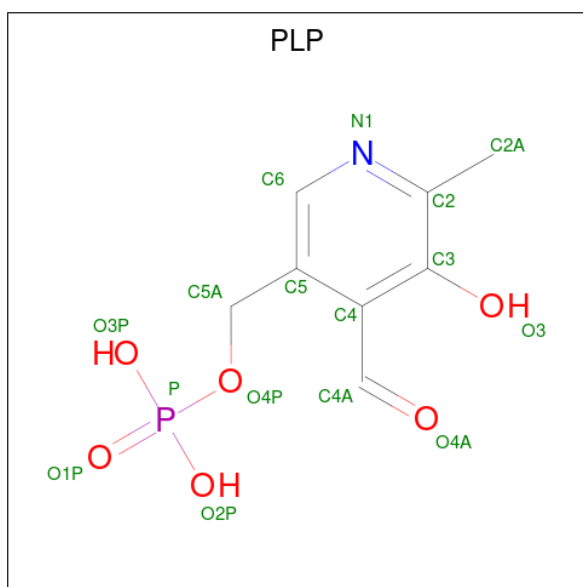
- Molecule 1 is a protein called GLYCOGEN PHOSPHORYLASE.

Mol	Chain	Residues	Atoms					ZeroOcc	AltConf	Trace
			Total	C	N	O	S			
1	A	789	6328	4014	1088	1204	22	63	0	1
1	B	789	6326	4014	1087	1203	22	56	0	1
1	C	791	6344	4025	1091	1206	22	57	0	1
1	D	789	6328	4014	1088	1204	22	69	0	1

There are 4 discrepancies between the modelled and reference sequences:

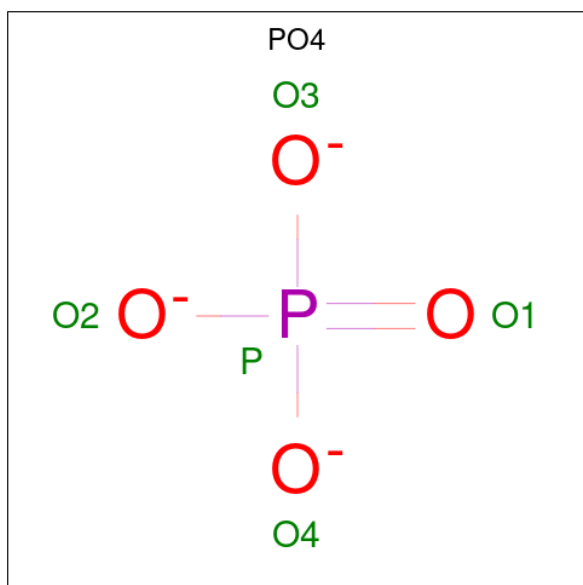
Chain	Residue	Modelled	Actual	Comment	Reference
A	224	ALA	SER	engineered mutation	UNP Q8KQ56
B	224	ALA	SER	engineered mutation	UNP Q8KQ56
C	224	ALA	SER	engineered mutation	UNP Q8KQ56
D	224	ALA	SER	engineered mutation	UNP Q8KQ56

- Molecule 2 is PYRIDOXAL-5'-PHOSPHATE (CCD ID: PLP) (formula: C₈H₁₀NO₆P).



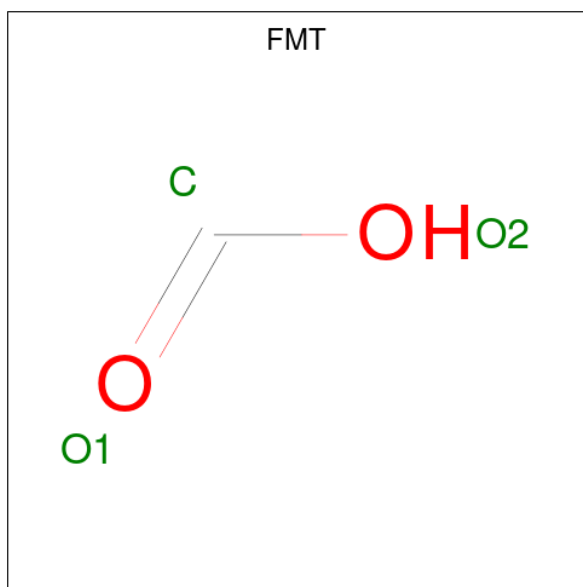
Mol	Chain	Residues	Atoms					ZeroOcc	AltConf
			Total	C	N	O	P		
2	A	1	Total	C	N	O	P	0	0
			15	8	1	5	1		
2	B	1	Total	C	N	O	P	0	0
			15	8	1	5	1		
2	C	1	Total	C	N	O	P	0	0
			15	8	1	5	1		
2	D	1	Total	C	N	O	P	0	0
			15	8	1	5	1		

- Molecule 3 is PHOSPHATE ION (CCD ID: PO4) (formula: O₄P).



Mol	Chain	Residues	Atoms	ZeroOcc	AltConf
3	A	1	Total O P 5 4 1	0	0
3	B	1	Total O P 5 4 1	0	0
3	B	1	Total O P 5 4 1	0	0
3	B	1	Total O P 5 4 1	0	0
3	B	1	Total O P 5 4 1	0	0
3	C	1	Total O P 5 4 1	0	0
3	C	1	Total O P 5 4 1	0	0
3	C	1	Total O P 5 4 1	0	0
3	D	1	Total O P 5 4 1	0	0

- Molecule 4 is FORMIC ACID (CCD ID: FMT) (formula: CH₂O₂).



Mol	Chain	Residues	Atoms	ZeroOcc	AltConf
4	A	1	Total C O 3 1 2	0	0
4	A	1	Total C O 3 1 2	0	0
4	A	1	Total C O 3 1 2	0	0

Continued on next page...

Continued from previous page...

Mol	Chain	Residues	Atoms			ZeroOcc	AltConf
4	A	1	Total 3	C 1	O 2	0	0
4	A	1	Total 3	C 1	O 2	0	0
4	A	1	Total 3	C 1	O 2	0	0
4	A	1	Total 3	C 1	O 2	0	0
4	A	1	Total 3	C 1	O 2	0	0
4	A	1	Total 3	C 1	O 2	0	0
4	A	1	Total 3	C 1	O 2	0	0
4	B	1	Total 3	C 1	O 2	0	0
4	B	1	Total 3	C 1	O 2	0	0
4	C	1	Total 3	C 1	O 2	0	0
4	C	1	Total 3	C 1	O 2	0	0
4	C	1	Total 3	C 1	O 2	0	0
4	C	1	Total 3	C 1	O 2	0	0
4	C	1	Total 3	C 1	O 2	0	0
4	D	1	Total 3	C 1	O 2	0	0
4	D	1	Total 3	C 1	O 2	0	0
4	D	1	Total 3	C 1	O 2	0	0
4	D	1	Total 3	C 1	O 2	0	0

- Molecule 5 is 1,2-ETHANEDIOL (CCD ID: EDO) (formula: C₂H₆O₂).



Mol	Chain	Residues	Atoms	ZeroOcc	AltConf
5	B	1	Total C O 4 2 2	0	0
5	B	1	Total C O 4 2 2	0	0
5	C	1	Total C O 4 2 2	0	0

- Molecule 6 is water.

Mol	Chain	Residues	Atoms	ZeroOcc	AltConf
6	A	303	Total O 303 303	0	0
6	B	306	Total O 306 306	0	0
6	C	340	Total O 340 340	0	0
6	D	205	Total O 205 205	0	0

MolProbity failed to run properly - this section is therefore empty.

3 Data and refinement statistics i

Property	Value	Source
Space group	P 1 21 1	Depositor
Cell constants a, b, c, α , β , γ	99.27Å 187.62Å 129.31Å 90.00° 112.48° 90.00°	Depositor
Resolution (Å)	30.00 – 1.90 30.00 – 1.90	Depositor EDS
% Data completeness (in resolution range)	89.3 (30.00-1.90) 89.4 (30.00-1.90)	Depositor EDS
R_{merge}	0.08	Depositor
R_{sym}	(Not available)	Depositor
$\langle I/\sigma(I) \rangle$ ¹	2.35 (at 1.91Å)	Xtrriage
Refinement program	CNS 1.1	Depositor
R, R_{free}	0.216 , 0.232 0.203 , 0.221	Depositor DCC
R_{free} test set	15209 reflections (4.97%)	wwPDB-VP
Wilson B-factor (Å ²)	24.9	Xtrriage
Anisotropy	0.467	Xtrriage
Bulk solvent k_{sol} (e/Å ³), B_{sol} (Å ²)	0.36 , 35.4	EDS
L-test for twinning ²	$\langle L \rangle = 0.48$, $\langle L^2 \rangle = 0.31$	Xtrriage
Estimated twinning fraction	0.016 for h,-k,-h-l	Xtrriage
F_o, F_c correlation	0.95	EDS
Total number of atoms	26654	wwPDB-VP
Average B, all atoms (Å ²)	31.0	wwPDB-VP

Xtrriage's analysis on translational NCS is as follows: *The analyses of the Patterson function reveals a significant off-origin peak that is 26.29 % of the origin peak, indicating pseudo-translational symmetry. The chance of finding a peak of this or larger height randomly in a structure without pseudo-translational symmetry is equal to 2.7096e-03. The detected translational NCS is most likely also responsible for the elevated intensity ratio.*

¹Intensities estimated from amplitudes.

²Theoretical values of $\langle |L| \rangle$, $\langle L^2 \rangle$ for acentric reflections are 0.5, 0.333 respectively for untwinned datasets, and 0.375, 0.2 for perfectly twinned datasets.

4 Model quality [i](#)

4.1 Standard geometry [i](#)

MolProbity failed to run properly - this section is therefore empty.

4.2 Too-close contacts [i](#)

MolProbity failed to run properly - this section is therefore empty.

4.3 Torsion angles [i](#)

4.3.1 Protein backbone [i](#)

MolProbity failed to run properly - this section is therefore empty.

4.3.2 Protein sidechains [i](#)

MolProbity failed to run properly - this section is therefore empty.

4.3.3 RNA [i](#)

MolProbity failed to run properly - this section is therefore empty.

4.4 Non-standard residues in protein, DNA, RNA chains [i](#)

There are no non-standard protein/DNA/RNA residues in this entry.

4.5 Carbohydrates [i](#)

There are no oligosaccharides in this entry.

4.6 Ligand geometry [i](#)

35 ligands are modelled in this entry.

In the following table, the Counts columns list the number of bonds (or angles) for which Mogul statistics could be retrieved, the number of bonds (or angles) that are observed in the model and the number of bonds (or angles) that are defined in the Chemical Component Dictionary. The Link column lists molecule types, if any, to which the group is linked. The Z score for a bond

length (or angle) is the number of standard deviations the observed value is removed from the expected value. A bond length (or angle) with $|Z| > 2$ is considered an outlier worth inspection. RMSZ is the root-mean-square of all Z scores of the bond lengths (or angles).

Mol	Type	Chain	Res	Link	Bond lengths			Bond angles		
					Counts	RMSZ	# Z > 2	Counts	RMSZ	# Z > 2
4	FMT	A	1802	-	2,2,2	5.34	2 (100%)	1,1,1	1.33	0
3	PO4	A	1794	-	4,4,4	1.43	1 (25%)	6,6,6	0.90	0
3	PO4	C	1796	-	4,4,4	1.88	1 (25%)	6,6,6	0.96	0
4	FMT	D	1798	-	2,2,2	5.36	2 (100%)	1,1,1	1.33	0
4	FMT	A	1796	-	2,2,2	5.35	2 (100%)	1,1,1	1.33	0
3	PO4	B	1798	-	4,4,4	1.43	1 (25%)	6,6,6	0.90	0
3	PO4	B	1797	-	4,4,4	1.35	1 (25%)	6,6,6	0.86	0
4	FMT	A	1799	-	2,2,2	5.35	2 (100%)	1,1,1	1.33	0
4	FMT	D	1795	-	2,2,2	5.35	2 (100%)	1,1,1	1.33	0
5	EDO	C	1803	-	3,3,3	0.42	0	2,2,2	0.38	0
3	PO4	D	1794	-	4,4,4	1.75	1 (25%)	6,6,6	0.95	0
2	PLP	D	1634	1	15,15,16	2.12	7 (46%)	21,22,23	2.27	10 (47%)
4	FMT	A	1797	-	2,2,2	5.36	2 (100%)	1,1,1	1.32	0
3	PO4	C	1797	-	4,4,4	1.36	1 (25%)	6,6,6	0.88	0
4	FMT	D	1797	-	2,2,2	5.35	2 (100%)	1,1,1	1.33	0
3	PO4	C	1798	-	4,4,4	1.45	1 (25%)	6,6,6	0.90	0
2	PLP	B	1634	1	15,15,16	1.96	5 (33%)	21,22,23	2.12	8 (38%)
4	FMT	A	1803	-	2,2,2	5.35	2 (100%)	1,1,1	1.33	0
4	FMT	C	1802	-	2,2,2	5.36	2 (100%)	1,1,1	1.33	0
4	FMT	A	1798	-	2,2,2	5.34	2 (100%)	1,1,1	1.33	0
4	FMT	B	1799	-	2,2,2	5.35	2 (100%)	1,1,1	1.33	0
2	PLP	C	1634	1	15,15,16	1.99	7 (46%)	21,22,23	2.09	8 (38%)
3	PO4	B	1795	-	4,4,4	1.65	1 (25%)	6,6,6	0.93	0
3	PO4	B	1796	-	4,4,4	1.35	1 (25%)	6,6,6	0.98	0
4	FMT	A	1795	-	2,2,2	5.35	2 (100%)	1,1,1	1.33	0
4	FMT	C	1799	-	2,2,2	5.35	2 (100%)	1,1,1	1.33	0
2	PLP	A	1634	1	15,15,16	2.13	7 (46%)	21,22,23	1.88	7 (33%)
4	FMT	C	1801	-	2,2,2	5.35	2 (100%)	1,1,1	1.33	0
5	EDO	B	1801	-	3,3,3	0.42	0	2,2,2	0.37	0
5	EDO	B	1802	-	3,3,3	0.42	0	2,2,2	0.38	0
4	FMT	A	1801	-	2,2,2	5.35	2 (100%)	1,1,1	1.33	0
4	FMT	B	1800	-	2,2,2	5.35	2 (100%)	1,1,1	1.33	0

Mol	Type	Chain	Res	Link	Bond lengths			Bond angles		
					Counts	RMSZ	# Z > 2	Counts	RMSZ	# Z > 2
4	FMT	C	1800	-	2,2,2	5.36	2 (100%)	1,1,1	1.33	0
4	FMT	A	1800	-	2,2,2	5.35	2 (100%)	1,1,1	1.33	0
4	FMT	D	1796	-	2,2,2	5.35	2 (100%)	1,1,1	1.33	0

In the following table, the Chirals column lists the number of chiral outliers, the number of chiral centers analysed, the number of these observed in the model and the number defined in the Chemical Component Dictionary. Similar counts are reported in the Torsion and Rings columns. '-' means no outliers of that kind were identified.

Mol	Type	Chain	Res	Link	Chirals	Torsions	Rings
5	EDO	B	1802	-	-	1/1/1/1	-
2	PLP	A	1634	1	-	4/6/6/8	0/1/1/1
5	EDO	B	1801	-	-	1/1/1/1	-
5	EDO	C	1803	-	-	0/1/1/1	-
2	PLP	D	1634	1	-	5/6/6/8	0/1/1/1
2	PLP	C	1634	1	-	3/6/6/8	0/1/1/1
2	PLP	B	1634	1	-	3/6/6/8	0/1/1/1

All (73) bond length outliers are listed below:

Mol	Chain	Res	Type	Atoms	Z	Observed(Å)	Ideal(Å)
4	C	1802	FMT	O1-C	5.46	1.52	1.22
4	A	1797	FMT	O1-C	5.44	1.52	1.22
4	A	1795	FMT	O1-C	5.44	1.52	1.22
4	A	1801	FMT	O1-C	5.44	1.52	1.22
4	D	1795	FMT	O1-C	5.44	1.52	1.22
4	A	1799	FMT	O1-C	5.44	1.52	1.22
4	D	1798	FMT	O1-C	5.44	1.52	1.22
4	C	1799	FMT	O1-C	5.44	1.52	1.22
4	A	1803	FMT	O1-C	5.44	1.52	1.22
4	C	1800	FMT	O1-C	5.43	1.52	1.22
4	A	1796	FMT	O1-C	5.43	1.52	1.22
4	B	1799	FMT	O1-C	5.43	1.52	1.22
4	D	1797	FMT	O1-C	5.43	1.52	1.22
4	A	1800	FMT	O1-C	5.43	1.52	1.22
4	B	1800	FMT	O1-C	5.43	1.52	1.22
4	D	1796	FMT	O1-C	5.43	1.52	1.22
4	A	1798	FMT	O1-C	5.43	1.52	1.22
4	A	1802	FMT	O1-C	5.43	1.52	1.22
4	C	1801	FMT	O1-C	5.43	1.52	1.22
4	D	1798	FMT	O2-C	5.28	1.55	1.28

Continued on next page...

Continued from previous page...

Mol	Chain	Res	Type	Atoms	Z	Observed(Å)	Ideal(Å)
4	C	1801	FMT	O2-C	5.28	1.55	1.28
4	C	1800	FMT	O2-C	5.27	1.55	1.28
4	A	1796	FMT	O2-C	5.27	1.55	1.28
4	A	1800	FMT	O2-C	5.27	1.55	1.28
4	B	1800	FMT	O2-C	5.27	1.55	1.28
4	B	1799	FMT	O2-C	5.27	1.55	1.28
4	A	1797	FMT	O2-C	5.27	1.55	1.28
4	D	1797	FMT	O2-C	5.27	1.55	1.28
4	A	1801	FMT	O2-C	5.27	1.55	1.28
4	A	1795	FMT	O2-C	5.27	1.55	1.28
4	C	1799	FMT	O2-C	5.27	1.55	1.28
4	C	1802	FMT	O2-C	5.27	1.55	1.28
4	A	1799	FMT	O2-C	5.26	1.55	1.28
4	D	1796	FMT	O2-C	5.26	1.55	1.28
4	D	1795	FMT	O2-C	5.26	1.55	1.28
4	A	1803	FMT	O2-C	5.26	1.55	1.28
4	A	1798	FMT	O2-C	5.25	1.55	1.28
4	A	1802	FMT	O2-C	5.25	1.55	1.28
2	D	1634	PLP	P-O4P	-3.51	1.49	1.60
2	A	1634	PLP	P-O4P	-3.49	1.49	1.60
2	D	1634	PLP	C6-C5	3.48	1.44	1.37
2	A	1634	PLP	C6-C5	3.45	1.44	1.37
3	C	1796	PO4	P-O1	3.43	1.58	1.50
2	D	1634	PLP	P-O1P	3.33	1.60	1.50
2	B	1634	PLP	P-O1P	3.29	1.60	1.50
2	B	1634	PLP	P-O4P	-3.26	1.50	1.60
2	C	1634	PLP	C6-C5	3.21	1.44	1.37
2	B	1634	PLP	C2-N1	3.19	1.39	1.33
3	D	1794	PO4	P-O1	3.10	1.57	1.50
2	C	1634	PLP	P-O4P	-2.98	1.50	1.60
2	A	1634	PLP	C2A-C2	-2.92	1.45	1.50
3	B	1795	PO4	P-O1	2.87	1.57	1.50
2	B	1634	PLP	C6-C5	2.87	1.43	1.37
2	C	1634	PLP	C3-C2	2.84	1.43	1.41
2	A	1634	PLP	P-O1P	2.81	1.59	1.50
2	A	1634	PLP	C3-C2	2.79	1.43	1.41
2	D	1634	PLP	C6-N1	2.74	1.40	1.34
2	C	1634	PLP	P-O1P	2.62	1.58	1.50
2	C	1634	PLP	C2-N1	2.53	1.38	1.33
3	C	1798	PO4	P-O1	2.52	1.56	1.50
3	B	1797	PO4	P-O1	2.49	1.56	1.50
3	A	1794	PO4	P-O1	2.48	1.56	1.50

Continued on next page...

Continued from previous page...

Mol	Chain	Res	Type	Atoms	Z	Observed(Å)	Ideal(Å)
2	D	1634	PLP	C3-C2	2.48	1.43	1.41
3	B	1798	PO4	P-O1	2.47	1.56	1.50
2	A	1634	PLP	C6-N1	2.46	1.39	1.34
2	A	1634	PLP	C2-N1	2.40	1.38	1.33
2	B	1634	PLP	C6-N1	2.40	1.39	1.34
3	C	1797	PO4	P-O1	2.36	1.56	1.50
2	D	1634	PLP	C2-N1	2.36	1.38	1.33
2	C	1634	PLP	C6-N1	2.30	1.39	1.34
2	C	1634	PLP	P-O2P	2.25	1.63	1.54
3	B	1796	PO4	P-O1	2.14	1.55	1.50
2	D	1634	PLP	C2A-C2	-2.06	1.47	1.50

All (33) bond angle outliers are listed below:

Mol	Chain	Res	Type	Atoms	Z	Observed(°)	Ideal(°)
2	D	1634	PLP	O3P-P-O4P	5.42	120.81	106.67
2	C	1634	PLP	C5A-C5-C6	-4.31	112.34	119.36
2	B	1634	PLP	C5-C6-N1	-4.04	117.26	123.83
2	B	1634	PLP	C5A-C5-C6	-3.72	113.29	119.36
2	A	1634	PLP	O2P-P-O4P	3.59	116.03	106.67
2	C	1634	PLP	C5-C6-N1	-3.51	118.11	123.83
2	A	1634	PLP	C5A-C5-C6	-3.41	113.80	119.36
2	D	1634	PLP	C5-C6-N1	-3.37	118.35	123.83
2	A	1634	PLP	C5-C6-N1	-3.34	118.40	123.83
2	B	1634	PLP	C3-C4-C5	3.33	122.58	118.59
2	C	1634	PLP	O3P-P-O4P	3.31	115.31	106.67
2	D	1634	PLP	O2P-P-O4P	-3.27	98.14	106.67
2	B	1634	PLP	C4A-C4-C3	-3.26	115.09	120.52
2	D	1634	PLP	O4P-C5A-C5	-3.22	103.31	109.36
2	A	1634	PLP	C3-C4-C5	3.21	122.44	118.59
2	C	1634	PLP	C5A-C5-C4	3.14	128.84	122.64
2	D	1634	PLP	C3-C4-C5	3.10	122.31	118.59
2	D	1634	PLP	C5A-C5-C6	-3.06	114.37	119.36
2	B	1634	PLP	C3-C2-N1	-2.95	117.23	120.96
2	B	1634	PLP	C6-N1-C2	2.85	124.36	119.20
2	B	1634	PLP	O2P-P-O4P	2.72	113.75	106.67
2	A	1634	PLP	C4A-C4-C3	-2.67	116.08	120.52
2	B	1634	PLP	C5A-C5-C4	2.66	127.89	122.64
2	C	1634	PLP	C3-C2-N1	-2.66	117.60	120.96
2	C	1634	PLP	C3-C4-C5	2.66	121.78	118.59
2	C	1634	PLP	C6-N1-C2	2.58	123.87	119.20
2	A	1634	PLP	C5A-C5-C4	2.51	127.59	122.64

Continued on next page...

Continued from previous page...

Mol	Chain	Res	Type	Atoms	Z	Observed(°)	Ideal(°)
2	D	1634	PLP	C5A-C5-C4	2.45	127.47	122.64
2	D	1634	PLP	C6-N1-C2	2.39	123.54	119.20
2	D	1634	PLP	C3-C2-N1	-2.38	117.96	120.96
2	C	1634	PLP	O3-C3-C4	2.28	124.06	118.10
2	A	1634	PLP	C6-N1-C2	2.15	123.10	119.20
2	D	1634	PLP	C4A-C4-C3	-2.03	117.14	120.52

There are no chirality outliers.

All (17) torsion outliers are listed below:

Mol	Chain	Res	Type	Atoms
2	A	1634	PLP	C5A-O4P-P-O2P
2	A	1634	PLP	C5A-O4P-P-O3P
2	B	1634	PLP	C5A-O4P-P-O3P
2	C	1634	PLP	C5A-O4P-P-O2P
2	C	1634	PLP	C5A-O4P-P-O3P
2	D	1634	PLP	C5A-O4P-P-O2P
5	B	1801	EDO	O1-C1-C2-O2
2	A	1634	PLP	C5A-O4P-P-O1P
2	B	1634	PLP	C5A-O4P-P-O1P
2	C	1634	PLP	C5A-O4P-P-O1P
2	D	1634	PLP	C5A-O4P-P-O1P
2	D	1634	PLP	C6-C5-C5A-O4P
2	B	1634	PLP	C5A-O4P-P-O2P
2	D	1634	PLP	C4-C5-C5A-O4P
5	B	1802	EDO	O1-C1-C2-O2
2	D	1634	PLP	C5A-O4P-P-O3P
2	A	1634	PLP	C4-C5-C5A-O4P

There are no ring outliers.

No monomer is involved in short contacts.

4.7 Other polymers [i](#)

There are no such residues in this entry.

4.8 Polymer linkage issues [i](#)

There are no chain breaks in this entry.

5 Fit of model and data

5.1 Protein, DNA and RNA chains

In the following table, the column labelled ‘#RSRZ > 2’ contains the number (and percentage) of RSRZ outliers, followed by percent RSRZ outliers for the chain as percentile scores relative to all X-ray entries and entries of similar resolution. The OWAB column contains the minimum, median, 95th percentile and maximum values of the occupancy-weighted average B-factor per residue. The column labelled ‘Q < 0.9’ lists the number of (and percentage) of residues with an average occupancy less than 0.9.

Mol	Chain	Analysed	<RSRZ>	#RSRZ>2	OWAB(Å ²)	Q<0.9
1	A	789/796 (99%)	0.28	17 (2%) 62 66	10, 28, 46, 75	16 (2%)
1	B	789/796 (99%)	0.29	25 (3%) 50 54	10, 28, 48, 69	14 (1%)
1	C	791/796 (99%)	0.22	17 (2%) 63 67	12, 27, 44, 74	15 (1%)
1	D	789/796 (99%)	0.57	33 (4%) 40 43	13, 34, 52, 71	16 (2%)
All	All	3158/3184 (99%)	0.34	92 (2%) 53 57	10, 29, 48, 75	61 (1%)

All (92) RSRZ outliers are listed below:

Mol	Chain	Res	Type	RSRZ
1	A	338	THR	5.9
1	C	336	VAL	5.7
1	A	337	LEU	5.1
1	C	338	THR	5.0
1	C	337	LEU	4.8
1	A	335	THR	4.8
1	D	793	VAL	4.7
1	A	336	VAL	4.7
1	A	340	ALA	4.4
1	B	793	VAL	4.3
1	D	369	LEU	4.0
1	D	373	ALA	4.0
1	D	722	TYR	3.9
1	C	340	ALA	3.9
1	A	5	GLN	3.9
1	B	337	LEU	3.7
1	B	340	ALA	3.6
1	B	705	ASP	3.5
1	D	337	LEU	3.5
1	B	6	PRO	3.4
1	B	549	LEU	3.4

Continued on next page...

Continued from previous page...

Mol	Chain	Res	Type	RSRZ
1	D	548	GLY	3.2
1	C	339	GLU	3.2
1	B	682	TYR	3.2
1	A	6	PRO	3.1
1	B	338	THR	3.1
1	D	340	ALA	3.1
1	D	372	ALA	3.1
1	C	341	LEU	3.0
1	A	473	LYS	3.0
1	C	525	HIS	2.9
1	A	341	LEU	2.9
1	B	686	GLU	2.8
1	D	6	PRO	2.8
1	B	688	VAL	2.6
1	C	335	THR	2.6
1	C	716	HIS	2.6
1	D	480	ASP	2.6
1	B	674	ALA	2.6
1	A	7	LEU	2.6
1	B	335	THR	2.6
1	D	654	VAL	2.5
1	C	705	ASP	2.5
1	A	474	LYS	2.5
1	A	593	LEU	2.5
1	D	748	ALA	2.5
1	D	723	GLY	2.4
1	B	341	LEU	2.4
1	B	546	GLU	2.4
1	B	590	VAL	2.4
1	A	712	TYR	2.4
1	D	275	ASP	2.4
1	D	550	THR	2.4
1	D	741	GLU	2.4
1	D	5	GLN	2.4
1	D	669	VAL	2.4
1	B	336	VAL	2.3
1	D	549	LEU	2.3
1	D	295	ASN	2.3
1	D	662	ALA	2.3
1	D	674	ALA	2.3
1	C	551	ASP	2.3
1	C	550	THR	2.3

Continued on next page...

Continued from previous page...

Mol	Chain	Res	Type	RSRZ
1	D	479	ALA	2.2
1	A	478	TYR	2.2
1	D	244	LEU	2.2
1	A	748	ALA	2.2
1	B	509	ILE	2.2
1	B	647	ASP	2.2
1	C	753	ASP	2.2
1	B	691	LEU	2.1
1	C	6	PRO	2.1
1	B	339	GLU	2.1
1	B	716	HIS	2.1
1	B	672	LEU	2.1
1	D	274	GLN	2.1
1	D	432	PHE	2.1
1	B	707	ASN	2.1
1	D	376	LEU	2.1
1	D	675	LEU	2.1
1	D	733	LEU	2.1
1	D	686	GLU	2.0
1	C	369	LEU	2.0
1	D	787	LEU	2.0
1	A	751	ALA	2.0
1	C	498	ASP	2.0
1	B	670	GLU	2.0
1	D	546	GLU	2.0
1	D	646	MET	2.0
1	B	544	ILE	2.0
1	A	548	GLY	2.0
1	C	688	VAL	2.0

5.2 Non-standard residues in protein, DNA, RNA chains [i](#)

There are no non-standard protein/DNA/RNA residues in this entry.

5.3 Carbohydrates [i](#)

There are no oligosaccharides in this entry.

5.4 Ligands [i](#)

In the following table, the Atoms column lists the number of modelled atoms in the group and the number defined in the chemical component dictionary. The B-factors column lists the minimum, median, 95th percentile and maximum values of B factors of atoms in the group. The column labelled 'Q< 0.9' lists the number of atoms with occupancy less than 0.9.

Mol	Type	Chain	Res	Atoms	RSCC	RSR	B-factors(Å ²)	Q<0.9
4	FMT	A	1802	3/3	0.75	0.20	42,42,42,42	0
4	FMT	C	1802	3/3	0.75	0.16	36,36,38,39	0
4	FMT	A	1801	3/3	0.77	0.15	35,35,36,38	0
4	FMT	A	1800	3/3	0.78	0.17	38,38,40,40	0
4	FMT	B	1800	3/3	0.81	0.14	32,32,36,37	0
4	FMT	A	1803	3/3	0.82	0.13	39,39,39,40	0
4	FMT	A	1797	3/3	0.82	0.14	38,38,38,39	0
4	FMT	A	1796	3/3	0.82	0.15	39,39,39,41	0
3	PO4	C	1798	5/5	0.83	0.15	56,57,58,58	2
4	FMT	A	1795	3/3	0.83	0.16	41,41,43,43	0
4	FMT	A	1799	3/3	0.84	0.13	39,39,40,41	0
4	FMT	D	1796	3/3	0.84	0.13	35,35,37,37	0
4	FMT	C	1801	3/3	0.86	0.12	35,35,37,38	0
3	PO4	A	1794	5/5	0.86	0.14	56,57,57,57	3
4	FMT	C	1799	3/3	0.86	0.13	36,36,38,38	0
4	FMT	D	1797	3/3	0.86	0.11	36,36,37,38	0
3	PO4	B	1798	5/5	0.87	0.16	55,56,57,57	3
4	FMT	D	1798	3/3	0.89	0.10	40,40,40,40	0
5	EDO	B	1802	4/4	0.89	0.11	27,27,31,34	0
4	FMT	D	1795	3/3	0.90	0.13	32,32,33,36	0
5	EDO	C	1803	4/4	0.90	0.12	26,27,30,33	0
4	FMT	B	1799	3/3	0.92	0.10	37,37,40,40	0
4	FMT	C	1800	3/3	0.93	0.10	33,33,35,36	0
2	PLP	B	1634	15/16	0.94	0.08	19,21,42,44	0
2	PLP	C	1634	15/16	0.94	0.08	23,24,42,43	0
5	EDO	B	1801	4/4	0.94	0.13	41,42,43,43	0
2	PLP	D	1634	15/16	0.94	0.08	28,30,48,48	0
3	PO4	D	1794	5/5	0.94	0.11	37,39,41,41	3
3	PO4	C	1796	5/5	0.95	0.10	36,39,41,42	4
4	FMT	A	1798	3/3	0.95	0.08	23,23,26,28	0
3	PO4	C	1797	5/5	0.95	0.10	36,38,40,41	0
2	PLP	A	1634	15/16	0.95	0.07	21,24,42,43	0
3	PO4	B	1795	5/5	0.96	0.11	37,38,39,39	4
3	PO4	B	1796	5/5	0.96	0.09	38,38,40,41	3
3	PO4	B	1797	5/5	0.96	0.08	37,39,41,41	0

5.5 Other polymers [i](#)

There are no such residues in this entry.