



Full wwPDB X-ray Structure Validation Report ⓘ

Dec 7, 2023 – 11:00 am GMT

PDB ID : 2C00
Title : Src family kinase Hck with bound inhibitor A-770041
Authors : Borhani, D.W.; Burchat, A.; Calderwood, D.J.; Hirst, G.C.; Li, B.; Loew, A.
Deposited on : 2005-09-06
Resolution : 2.85 Å(reported)

This is a Full wwPDB X-ray Structure Validation Report for a publicly released PDB entry.

We welcome your comments at validation@mail.wwpdb.org

A user guide is available at

<https://www.wwpdb.org/validation/2017/XrayValidationReportHelp>

with specific help available everywhere you see the ⓘ symbol.

The types of validation reports are described at

<http://www.wwpdb.org/validation/2017/FAQs#types>.

The following versions of software and data (see [references ⓘ](#)) were used in the production of this report:

MolProbity : 4.02b-467
Mogul : 1.8.4, CSD as541be (2020)
Xtriage (Phenix) : 1.13
EDS : 2.36
buster-report : 1.1.7 (2018)
Percentile statistics : 20191225.v01 (using entries in the PDB archive December 25th 2019)
Refmac : 5.8.0158
CCP4 : 7.0.044 (Gargrove)
Ideal geometry (proteins) : Engh & Huber (2001)
Ideal geometry (DNA, RNA) : Parkinson et al. (1996)
Validation Pipeline (wwPDB-VP) : 2.36

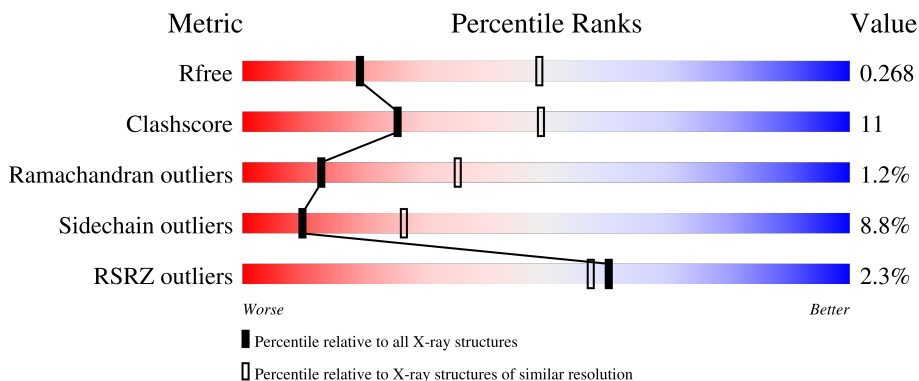
1 Overall quality at a glance

The following experimental techniques were used to determine the structure:

X-RAY DIFFRACTION

The reported resolution of this entry is 2.85 Å.

Percentile scores (ranging between 0-100) for global validation metrics of the entry are shown in the following graphic. The table shows the number of entries on which the scores are based.



Metric	Whole archive (#Entries)	Similar resolution (#Entries, resolution range(Å))
R_{free}	130704	3168 (2.90-2.82)
Clashscore	141614	3438 (2.90-2.82)
Ramachandran outliers	138981	3348 (2.90-2.82)
Sidechain outliers	138945	3351 (2.90-2.82)
RSRZ outliers	127900	3103 (2.90-2.82)

The table below summarises the geometric issues observed across the polymeric chains and their fit to the electron density. The red, orange, yellow and green segments of the lower bar indicate the fraction of residues that contain outliers for ≥ 3 , 2, 1 and 0 types of geometric quality criteria respectively. A grey segment represents the fraction of residues that are not modelled. The numeric value for each fraction is indicated below the corresponding segment, with a dot representing fractions $\leq 5\%$. The upper red bar (where present) indicates the fraction of residues that have poor fit to the electron density. The numeric value is given above the bar.

Mol	Chain	Length	Quality of chain
1	A	454	 4% 70% 22% . .
1	B	454	 4% 67% 25% . .

2 Entry composition

There are 4 unique types of molecules in this entry. The entry contains 7362 atoms, of which 0 are hydrogens and 0 are deuteriums.

In the tables below, the ZeroOcc column contains the number of atoms modelled with zero occupancy, the AltConf column contains the number of residues with at least one atom in alternate conformation and the Trace column contains the number of residues modelled with at most 2 atoms.

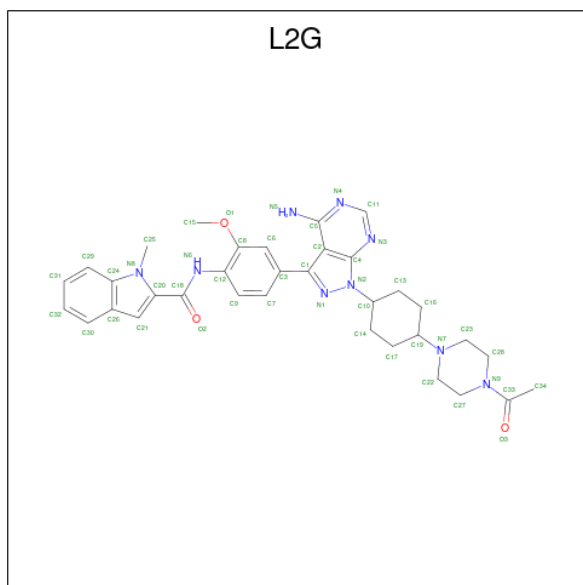
- Molecule 1 is a protein called TYROSINE-PROTEIN KINASE HCK.

Mol	Chain	Residues	Atoms						ZeroOcc	AltConf	Trace
			Total	C	N	O	P	S			
1	A	434	3506	2239	591	655	1	20	0	1	0
1	B	434	3514	2243	593	657	1	20	0	2	0

There are 6 discrepancies between the modelled and reference sequences:

Chain	Residue	Modelled	Actual	Comment	Reference
A	502	GLU	GLN	engineered mutation	UNP P08631
A	503	GLU	GLN	engineered mutation	UNP P08631
A	504	ILE	GLN	engineered mutation	UNP P08631
B	502	GLU	GLN	engineered mutation	UNP P08631
B	503	GLU	GLN	engineered mutation	UNP P08631
B	504	ILE	GLN	engineered mutation	UNP P08631

- Molecule 2 is N-(4-{1-[4-(4-ACETYLPYPERAZIN-1-YL)-TRANS-CYCLOHEXYL]-4-AMINO-1H-PYRAZOLO[3,4-D]PYRIMIDIN-3-YL}-2-METHOXYPHENYL)-1-METHYL-1H-INDOLE-2-CARBOXAMIDE (three-letter code: L2G) (formula: C₃₄H₃₉N₉O₃).



Mol	Chain	Residues	Atoms			ZeroOcc	AltConf	
2	A	1	Total	C	N	O	0	0
			46	34	9	3		
2	B	1	Total	C	N	O	0	0
			46	34	9	3		

- Molecule 3 is CALCIUM ION (three-letter code: CA) (formula: Ca).

Mol	Chain	Residues	Atoms		ZeroOcc	AltConf
3	A	1	Total	Ca	0	0
			1	1		
3	B	1	Total	Ca	0	0
			1	1		

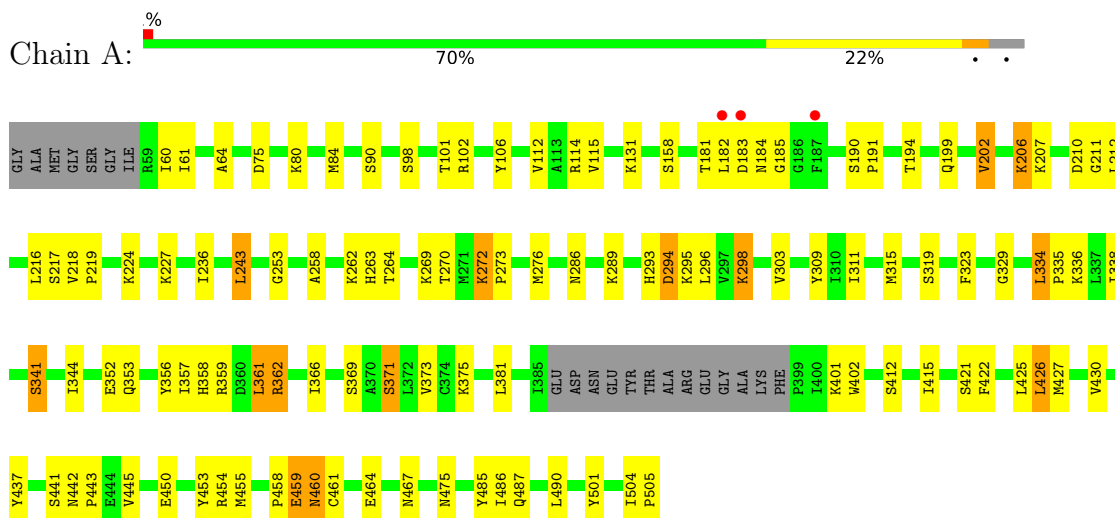
- Molecule 4 is water.

Mol	Chain	Residues	Atoms		ZeroOcc	AltConf
4	A	159	Total	O	0	0
			159	159		
4	B	89	Total	O	0	0
			89	89		

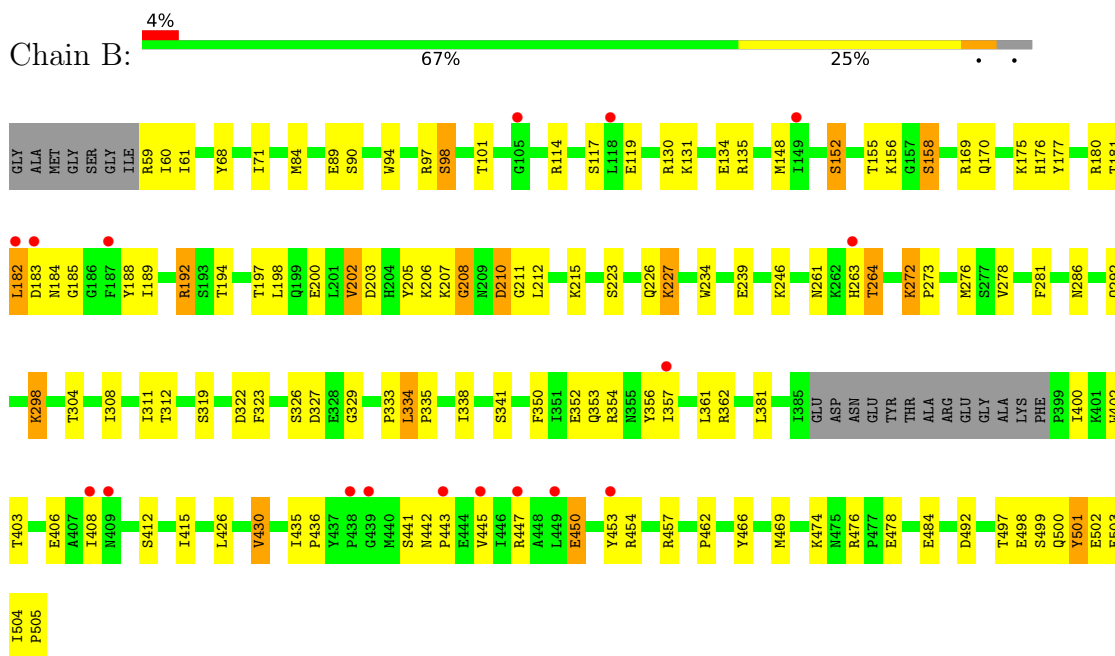
3 Residue-property plots

These plots are drawn for all protein, RNA, DNA and oligosaccharide chains in the entry. The first graphic for a chain summarises the proportions of the various outlier classes displayed in the second graphic. The second graphic shows the sequence view annotated by issues in geometry and electron density. Residues are color-coded according to the number of geometric quality criteria for which they contain at least one outlier: green = 0, yellow = 1, orange = 2 and red = 3 or more. A red dot above a residue indicates a poor fit to the electron density ($RSRZ > 2$). Stretches of 2 or more consecutive residues without any outlier are shown as a green connector. Residues present in the sample, but not in the model, are shown in grey.

• Molecule 1: TYROSINE-PROTEIN KINASE HCK



• Molecule 1: TYROSINE-PROTEIN KINASE HCK



4 Data and refinement statistics

Property	Value	Source
Space group	P 1 21 1	Depositor
Cell constants a, b, c, α , β , γ	49.02Å 73.18Å 180.17Å 90.00° 95.52° 90.00°	Depositor
Resolution (Å)	40.00 – 2.85 48.79 – 2.84	Depositor EDS
% Data completeness (in resolution range)	96.2 (40.00-2.85) 95.6 (48.79-2.84)	Depositor EDS
R_{merge}	0.09	Depositor
R_{sym}	(Not available)	Depositor
$\langle I/\sigma(I) \rangle$ ¹	2.27 (at 2.86Å)	Xtrriage
Refinement program	REFMAC 5.2.0005	Depositor
R, R_{free}	0.200 , 0.273 0.199 , 0.268	Depositor DCC
R_{free} test set	1443 reflections (4.99%)	wwPDB-VP
Wilson B-factor (Å ²)	58.5	Xtrriage
Anisotropy	0.639	Xtrriage
Bulk solvent k_{sol} (e/Å ³), B_{sol} (Å ²)	0.36 , 72.1	EDS
L-test for twinning ²	$\langle L \rangle = 0.50$, $\langle L^2 \rangle = 0.34$	Xtrriage
Estimated twinning fraction	0.023 for h,-k,-h-l	Xtrriage
F_o, F_c correlation	0.94	EDS
Total number of atoms	7362	wwPDB-VP
Average B, all atoms (Å ²)	52.0	wwPDB-VP

Xtrriage's analysis on translational NCS is as follows: *The largest off-origin peak in the Patterson function is 10.98% of the height of the origin peak. No significant pseudotranslation is detected.*

¹Intensities estimated from amplitudes.

²Theoretical values of $\langle |L| \rangle$, $\langle L^2 \rangle$ for acentric reflections are 0.5, 0.333 respectively for untwinned datasets, and 0.375, 0.2 for perfectly twinned datasets.

5 Model quality [i](#)

5.1 Standard geometry [i](#)

Bond lengths and bond angles in the following residue types are not validated in this section: L2G, CA, PTR

The Z score for a bond length (or angle) is the number of standard deviations the observed value is removed from the expected value. A bond length (or angle) with $|Z| > 5$ is considered an outlier worth inspection. RMSZ is the root-mean-square of all Z scores of the bond lengths (or angles).

Mol	Chain	Bond lengths		Bond angles	
		RMSZ	# $ Z > 5$	RMSZ	# $ Z > 5$
1	A	0.75	0/3573	0.81	4/4823 (0.1%)
1	B	0.71	2/3581 (0.1%)	0.79	4/4834 (0.1%)
All	All	0.73	2/7154 (0.0%)	0.80	8/9657 (0.1%)

All (2) bond length outliers are listed below:

Mol	Chain	Res	Type	Atoms	Z	Observed(Å)	Ideal(Å)
1	B	447	ARG	CZ-NH1	14.56	1.51	1.33
1	B	447	ARG	NE-CZ	6.38	1.41	1.33

All (8) bond angle outliers are listed below:

Mol	Chain	Res	Type	Atoms	Z	Observed(°)	Ideal(°)
1	B	447	ARG	NE-CZ-NH2	-12.04	114.28	120.30
1	A	243	LEU	CA-CB-CG	6.16	129.47	115.30
1	A	371	SER	CB-CA-C	-6.08	98.54	110.10
1	A	212	LEU	CA-CB-CG	5.87	128.79	115.30
1	B	447	ARG	NE-CZ-NH1	5.76	123.18	120.30
1	B	148	MET	CG-SD-CE	5.23	108.57	100.20
1	B	210	ASP	N-CA-C	-5.17	97.03	111.00
1	A	425	LEU	CB-CG-CD2	-5.04	102.43	111.00

There are no chirality outliers.

There are no planarity outliers.

5.2 Too-close contacts [i](#)

In the following table, the Non-H and H(model) columns list the number of non-hydrogen atoms and hydrogen atoms in the chain respectively. The H(added) column lists the number of hydrogen

atoms added and optimized by MolProbity. The Clashes column lists the number of clashes within the asymmetric unit, whereas Symm-Clashes lists symmetry-related clashes.

Mol	Chain	Non-H	H(model)	H(added)	Clashes	Symm-Clashes
1	A	3506	0	3461	65	0
1	B	3514	0	3466	84	0
2	A	46	0	39	4	0
2	B	46	0	39	4	0
3	A	1	0	0	0	0
3	B	1	0	0	0	0
4	A	159	0	0	8	0
4	B	89	0	0	12	0
All	All	7362	0	7005	150	0

The all-atom clashscore is defined as the number of clashes found per 1000 atoms (including hydrogen atoms). The all-atom clashscore for this structure is 11.

All (150) close contacts within the same asymmetric unit are listed below, sorted by their clash magnitude.

Atom-1	Atom-2	Interatomic distance (Å)	Clash overlap (Å)
1:B:263[B]:HIS:HD2	1:B:264:THR:OG1	1.40	1.04
1:B:263[B]:HIS:CD2	1:B:264:THR:OG1	2.18	0.94
1:B:68:TYR:HE1	1:B:227:LYS:HE3	1.47	0.78
1:B:68:TYR:CE1	1:B:227:LYS:HE3	2.19	0.77
1:B:441:SER:O	1:B:445:VAL:HG23	1.87	0.74
1:B:182:LEU:HD23	1:B:183:ASP:H	1.57	0.69
1:A:263[B]:HIS:ND1	1:A:264:THR:OG1	2.23	0.68
1:B:503:GLU:OE1	4:B:2088:HOH:O	2.13	0.66
1:B:234:TRP:HE1	1:B:286:ASN:HD21	1.43	0.66
1:A:352:GLU:HG3	1:A:415:ILE:HG12	1.76	0.66
1:B:457:ARG:HG3	1:B:466:TYR:CG	2.29	0.66
1:B:499:SER:O	4:B:2084:HOH:O	2.12	0.66
1:A:467:ASN:CB	4:A:2132:HOH:O	2.44	0.66
1:A:467:ASN:HB3	4:A:2132:HOH:O	1.97	0.64
1:B:442:ASN:HB2	1:B:443:PRO:HD3	1.78	0.63
1:B:263[B]:HIS:CE1	4:B:2003:HOH:O	2.51	0.63
1:A:303:VAL:HB	1:A:309:TYR:HB2	1.81	0.62
1:A:358:HIS:O	1:A:359:ARG:HB2	1.97	0.62
1:A:341:SER:HB3	1:A:490:LEU:HD13	1.82	0.61
1:A:323:PHE:O	1:A:329:GLY:HA3	1.99	0.61
1:B:263[B]:HIS:HE1	4:B:2003:HOH:O	1.84	0.61
1:B:426:LEU:O	1:B:430:VAL:HG22	2.00	0.61
1:B:498:GLU:HB3	4:B:2082:HOH:O	1.99	0.60

Continued on next page...

Continued from previous page...

Atom-1	Atom-2	Interatomic distance (Å)	Clash overlap (Å)
1:A:442:ASN:HB2	1:A:443:PRO:HD3	1.83	0.60
1:B:400:ILE:HD11	1:B:442:ASN:HB3	1.83	0.60
1:B:210:ASP:O	1:B:212:LEU:N	2.32	0.59
1:B:239:GLU:H	1:B:239:GLU:CD	2.06	0.59
1:B:403:THR:HG22	1:B:408:ILE:HG13	1.84	0.59
1:B:192:ARG:HH11	1:B:192:ARG:HG3	1.67	0.58
1:A:441:SER:O	1:A:445:VAL:HG23	2.04	0.58
1:B:152:SER:HB2	4:B:2019:HOH:O	2.03	0.58
1:B:206:LYS:O	1:B:208:GLY:N	2.36	0.57
1:B:182:LEU:HD23	1:B:183:ASP:N	2.19	0.57
1:A:422:PHE:CE2	1:A:426:LEU:HD22	2.40	0.56
1:B:502:GLU:OE2	4:B:2084:HOH:O	2.18	0.56
1:B:323:PHE:O	1:B:329:GLY:HA3	2.06	0.56
1:B:261:ASN:HB2	1:B:263[B]:HIS:CE1	2.41	0.56
1:B:60:ILE:HD13	1:B:114:ARG:NH2	2.21	0.55
1:B:175:LYS:HD2	1:B:502:GLU:OE2	2.07	0.55
1:A:464:GLU:HG2	1:B:497:THR:O	2.06	0.55
1:B:357:ILE:HD12	4:B:2052:HOH:O	2.06	0.54
1:B:442:ASN:HB2	1:B:443:PRO:CD	2.37	0.54
1:A:253:GLY:HA3	1:A:270:THR:O	2.08	0.54
1:B:272:LYS:HE3	1:B:273:PRO:HD2	1.90	0.54
1:A:64:ALA:HA	1:A:112:VAL:HG12	1.89	0.54
1:A:211:GLY:HA3	1:A:504:ILE:HD11	1.90	0.54
1:B:319:SER:HB3	2:B:1506:L2G:H161	1.90	0.54
1:A:272:LYS:HD2	1:A:273:PRO:HD2	1.91	0.53
1:A:341:SER:OG	1:A:426:LEU:HD13	2.09	0.53
1:A:401:LYS:HE2	1:A:437:TYR:HB2	1.91	0.53
1:A:336:LYS:HE3	4:A:2091:HOH:O	2.10	0.52
1:B:130:ARG:NH2	1:B:500:GLN:HG2	2.25	0.52
1:B:189:ILE:HG22	1:B:504:ILE:HG21	1.89	0.52
1:B:334:LEU:HB3	1:B:335:PRO:HD3	1.91	0.52
1:B:155:THR:HG22	1:B:158:SER:HB2	1.93	0.51
1:A:98:SER:HB3	1:A:101:THR:OG1	2.11	0.51
1:A:319:SER:HB3	2:A:1506:L2G:H161	1.91	0.51
1:A:362:ARG:HB3	1:A:402:TRP:CD1	2.46	0.51
1:B:334:LEU:HD21	1:B:462:PRO:HD3	1.93	0.51
1:A:218:VAL:HG23	1:A:219:PRO:HD2	1.92	0.50
1:B:205:TYR:HE1	1:B:210:ASP:HB2	1.76	0.50
1:A:344:ILE:HG12	1:A:366:ILE:HD12	1.93	0.50
1:B:356:TYR:C	1:B:357:ILE:HG13	2.31	0.50
1:B:234:TRP:HE1	1:B:286:ASN:ND2	2.09	0.49

Continued on next page...

Continued from previous page...

Atom-1	Atom-2	Interatomic distance (Å)	Clash overlap (Å)
1:B:261:ASN:O	1:B:263[B]:HIS:ND1	2.45	0.49
1:B:239:GLU:CD	1:B:239:GLU:N	2.66	0.49
2:B:1506:L2G:H5N1	2:B:1506:L2G:C6	2.26	0.49
1:B:484:GLU:HB3	4:B:2070:HOH:O	2.12	0.49
1:B:177:TYR:CE2	1:B:502:GLU:HB2	2.48	0.48
1:A:206:LYS:HG3	1:A:216:LEU:O	2.13	0.48
1:B:474:LYS:HE3	4:B:2067:HOH:O	2.12	0.48
1:A:334:LEU:HB3	1:A:335:PRO:HD3	1.96	0.48
1:A:102:ARG:HD3	4:A:2018:HOH:O	2.14	0.48
1:A:84:MET:HE3	1:A:98:SER:HA	1.96	0.47
1:A:182:LEU:HD23	1:A:183:ASP:N	2.29	0.47
1:B:352:GLU:HG3	1:B:415:ILE:HG12	1.95	0.47
1:B:450:GLU:HA	1:B:450:GLU:OE2	2.15	0.47
1:A:460:ASN:OD1	1:A:460:ASN:N	2.47	0.47
1:B:435:ILE:HG22	1:B:436:PRO:O	2.14	0.47
1:A:369:SER:CB	4:A:2104:HOH:O	2.61	0.47
1:A:276:MET:O	1:A:276:MET:SD	2.73	0.47
1:B:333:PRO:HB2	1:B:335:PRO:HD2	1.97	0.47
1:B:503:GLU:O	1:B:504:ILE:HB	2.15	0.47
2:A:1506:L2G:C6	2:A:1506:L2G:H5N1	2.28	0.47
1:B:114:ARG:HH11	1:B:114:ARG:HG3	1.79	0.47
1:A:236:ILE:O	1:A:303:VAL:HG22	2.15	0.47
1:B:182:LEU:CD2	1:B:183:ASP:H	2.25	0.47
1:B:362:ARG:HB3	1:B:402:TRP:CD1	2.49	0.47
1:A:61:ILE:HG22	1:A:115:VAL:HG21	1.96	0.46
1:B:312:THR:OG1	2:B:1506:L2G:H153	2.15	0.46
1:B:292:GLN:NE2	1:B:298:LYS:HZ1	2.13	0.46
1:A:338:ILE:O	1:A:341:SER:HB2	2.14	0.46
1:B:183:ASP:O	1:B:185:GLY:N	2.41	0.46
1:B:272:LYS:HA	1:B:272:LYS:HD2	1.80	0.46
1:B:338:ILE:O	1:B:341:SER:HB2	2.16	0.45
1:A:293:HIS:HB3	1:A:296:LEU:HG	1.97	0.45
1:B:131:LYS:NZ	1:B:134:GLU:OE1	2.42	0.45
1:B:180:ARG:HG3	1:B:188:TYR:CE2	2.52	0.45
1:A:80:LYS:HD2	4:A:2001:HOH:O	2.17	0.45
1:A:356:TYR:O	1:A:357:ILE:HG13	2.16	0.45
1:B:71:ILE:HD12	1:B:263[B]:HIS:CD2	2.52	0.45
1:B:198:LEU:O	1:B:202:VAL:HG13	2.17	0.45
1:B:98:SER:HG	1:B:101:THR:H	1.63	0.44
1:B:354:ARG:HD3	1:B:354:ARG:HA	1.63	0.44
1:B:130:ARG:NH2	1:B:492:ASP:OD1	2.51	0.44

Continued on next page...

Continued from previous page...

Atom-1	Atom-2	Interatomic distance (Å)	Clash overlap (Å)
1:B:453:TYR:O	1:B:454:ARG:HD3	2.18	0.44
1:B:89:GLU:HG2	1:B:94:TRP:CE2	2.53	0.44
1:A:487:GLN:OE1	4:A:2143:HOH:O	2.21	0.43
1:A:269:LYS:HB2	1:A:269:LYS:HE3	1.70	0.43
1:A:458:PRO:HG2	1:A:461:CYS:HB2	2.00	0.43
1:B:131:LYS:O	1:B:134:GLU:HB3	2.19	0.43
1:B:246:LYS:NZ	4:B:2034:HOH:O	2.51	0.43
1:B:453:TYR:O	1:B:454:ARG:CD	2.66	0.43
1:B:476:ARG:HB3	1:B:478:GLU:OE1	2.18	0.43
1:B:281:PHE:CE2	1:B:308:ILE:HG21	2.53	0.43
1:A:485:TYR:O	1:A:486:ILE:C	2.54	0.43
1:A:459:GLU:OE1	1:A:459:GLU:HA	2.18	0.43
1:B:322:ASP:OD2	2:B:1506:L2G:H271	2.19	0.43
1:A:341:SER:OG	1:A:426:LEU:CD1	2.66	0.42
1:A:311:ILE:N	1:A:311:ILE:HD12	2.34	0.42
1:A:361:LEU:HA	1:A:361:LEU:HD23	1.54	0.42
1:A:371:SER:HB2	1:A:373:VAL:HG23	2.00	0.42
1:A:60:ILE:O	1:A:60:ILE:HG22	2.19	0.42
1:A:75:ASP:HA	1:A:106:TYR:H	1.85	0.42
1:A:315:MET:H	2:A:1506:L2G:C11	2.33	0.42
1:B:234:TRP:NE1	1:B:286:ASN:ND2	2.68	0.42
1:A:183:ASP:O	1:A:185:GLY:N	2.51	0.42
1:A:453:TYR:O	1:A:454:ARG:HD3	2.19	0.42
1:A:298:LYS:HG2	4:A:2077:HOH:O	2.20	0.41
1:B:59:ARG:HE	1:B:61:ILE:HD11	1.85	0.41
1:A:243:LEU:HA	1:A:258:ALA:HB2	2.01	0.41
1:B:504:ILE:HA	1:B:505:PRO:HD2	1.60	0.41
1:B:292:GLN:NE2	1:B:298:LYS:NZ	2.68	0.41
1:B:197:THR:OG1	1:B:200:GLU:HG3	2.21	0.41
1:A:295:LYS:O	1:A:375:LYS:HA	2.21	0.41
1:B:311:ILE:HD12	1:B:311:ILE:N	2.36	0.41
1:B:400:ILE:HD11	1:B:442:ASN:CB	2.49	0.41
1:A:381:LEU:HB2	2:A:1506:L2G:C26	2.51	0.41
1:B:176:HIS:HB3	1:B:501:PTR:CE1	2.51	0.41
1:A:190:SER:HA	1:A:191:PRO:HD3	1.82	0.41
1:A:218:VAL:CG2	1:A:219:PRO:HD2	2.50	0.41
1:A:294:ASP:OD1	1:A:294:ASP:N	2.54	0.41
1:B:426:LEU:HD23	1:B:469:MET:HG2	2.03	0.41
1:A:272:LYS:HD2	1:A:273:PRO:CD	2.51	0.40
1:A:182:LEU:HD23	1:A:183:ASP:H	1.86	0.40
1:A:315:MET:HE2	1:A:375:LYS:HB2	2.01	0.40

Continued on next page...

Continued from previous page...

Atom-1	Atom-2	Interatomic distance (Å)	Clash overlap (Å)
1:A:504:ILE:HA	1:A:505:PRO:HD2	1.39	0.40
1:A:427:MET:HG2	1:A:455:MET:CE	2.52	0.40
1:B:350:PHE:HA	4:B:2049:HOH:O	2.20	0.40
1:A:202:VAL:O	1:A:206:LYS:HB2	2.22	0.40

There are no symmetry-related clashes.

5.3 Torsion angles [i](#)

5.3.1 Protein backbone [i](#)

In the following table, the Percentiles column shows the percent Ramachandran outliers of the chain as a percentile score with respect to all X-ray entries followed by that with respect to entries of similar resolution.

The Analysed column shows the number of residues for which the backbone conformation was analysed, and the total number of residues.

Mol	Chain	Analysed	Favoured	Allowed	Outliers	Percentiles	
1	A	430/454 (95%)	398 (93%)	27 (6%)	5 (1%)	13	35
1	B	431/454 (95%)	398 (92%)	28 (6%)	5 (1%)	13	35
All	All	861/908 (95%)	796 (92%)	55 (6%)	10 (1%)	13	35

All (10) Ramachandran outliers are listed below:

Mol	Chain	Res	Type
1	B	211	GLY
1	A	184	ASN
1	A	459	GLU
1	B	182	LEU
1	B	184	ASN
1	B	207	LYS
1	A	460	ASN
1	A	217	SER
1	A	362	ARG
1	B	208	GLY

5.3.2 Protein sidechains [i](#)

In the following table, the Percentiles column shows the percent sidechain outliers of the chain as a percentile score with respect to all X-ray entries followed by that with respect to entries of similar resolution.

The Analysed column shows the number of residues for which the sidechain conformation was analysed, and the total number of residues.

Mol	Chain	Analysed	Rotameric	Outliers	Percentiles	
1	A	378/393 (96%)	349 (92%)	29 (8%)	13	32
1	B	379/393 (96%)	342 (90%)	37 (10%)	8	21
All	All	757/786 (96%)	691 (91%)	66 (9%)	10	27

All (66) residues with a non-rotameric sidechain are listed below:

Mol	Chain	Res	Type
1	A	90	SER
1	A	114	ARG
1	A	131	LYS
1	A	158	SER
1	A	181	THR
1	A	194	THR
1	A	199	GLN
1	A	202	VAL
1	A	206	LYS
1	A	207	LYS
1	A	210	ASP
1	A	224	LYS
1	A	227	LYS
1	A	262	LYS
1	A	272	LYS
1	A	286	ASN
1	A	289	LYS
1	A	294	ASP
1	A	298	LYS
1	A	334	LEU
1	A	341	SER
1	A	353	GLN
1	A	361	LEU
1	A	412	SER
1	A	421	SER
1	A	426	LEU
1	A	430	VAL

Continued on next page...

Continued from previous page...

Mol	Chain	Res	Type
1	A	450	GLU
1	A	475	ASN
1	B	84	MET
1	B	90	SER
1	B	97	ARG
1	B	98	SER
1	B	117	SER
1	B	119	GLU
1	B	135	ARG
1	B	152	SER
1	B	156	LYS
1	B	158	SER
1	B	169	ARG
1	B	170	GLN
1	B	181	THR
1	B	192	ARG
1	B	194	THR
1	B	202	VAL
1	B	203	ASP
1	B	215	LYS
1	B	223	SER
1	B	226	GLN
1	B	227	LYS
1	B	264	THR
1	B	272	LYS
1	B	276	MET
1	B	278	VAL
1	B	298	LYS
1	B	304	THR
1	B	326	SER
1	B	327	ASP
1	B	334	LEU
1	B	353	GLN
1	B	361	LEU
1	B	381	LEU
1	B	406	GLU
1	B	412	SER
1	B	430	VAL
1	B	450	GLU

Sometimes sidechains can be flipped to improve hydrogen bonding and reduce clashes. All (8) such sidechains are listed below:

Mol	Chain	Res	Type
1	A	209	ASN
1	A	226	GLN
1	A	261	ASN
1	A	475	ASN
1	B	214	GLN
1	B	286	ASN
1	B	292	GLN
1	B	442	ASN

5.3.3 RNA [i](#)

There are no RNA molecules in this entry.

5.4 Non-standard residues in protein, DNA, RNA chains [i](#)

2 non-standard protein/DNA/RNA residues are modelled in this entry.

In the following table, the Counts columns list the number of bonds (or angles) for which Mogul statistics could be retrieved, the number of bonds (or angles) that are observed in the model and the number of bonds (or angles) that are defined in the Chemical Component Dictionary. The Link column lists molecule types, if any, to which the group is linked. The Z score for a bond length (or angle) is the number of standard deviations the observed value is removed from the expected value. A bond length (or angle) with $|Z| > 2$ is considered an outlier worth inspection. RMSZ is the root-mean-square of all Z scores of the bond lengths (or angles).

Mol	Type	Chain	Res	Link	Bond lengths			Bond angles		
					Counts	RMSZ	# Z > 2	Counts	RMSZ	# Z > 2
1	PTR	A	501	3,1	15,16,17	1.94	1 (6%)	19,22,24	0.87	0
1	PTR	B	501	3,1	15,16,17	1.93	1 (6%)	19,22,24	1.20	2 (10%)

In the following table, the Chirals column lists the number of chiral outliers, the number of chiral centers analysed, the number of these observed in the model and the number defined in the Chemical Component Dictionary. Similar counts are reported in the Torsion and Rings columns. '-' means no outliers of that kind were identified.

Mol	Type	Chain	Res	Link	Chirals	Torsions	Rings
1	PTR	A	501	3,1	-	0/10/11/13	0/1/1/1
1	PTR	B	501	3,1	-	0/10/11/13	0/1/1/1

All (2) bond length outliers are listed below:

Mol	Chain	Res	Type	Atoms	Z	Observed(Å)	Ideal(Å)
1	A	501	PTR	OH-CZ	-7.17	1.24	1.40
1	B	501	PTR	OH-CZ	-6.98	1.24	1.40

All (2) bond angle outliers are listed below:

Mol	Chain	Res	Type	Atoms	Z	Observed(°)	Ideal(°)
1	B	501	PTR	OH-P-O1P	-2.70	99.14	109.31
1	B	501	PTR	CB-CA-C	-2.02	107.68	111.47

There are no chirality outliers.

There are no torsion outliers.

There are no ring outliers.

1 monomer is involved in 1 short contact:

Mol	Chain	Res	Type	Clashes	Symm-Clashes
1	B	501	PTR	1	0

5.5 Carbohydrates [i](#)

There are no monosaccharides in this entry.

5.6 Ligand geometry [i](#)

Of 4 ligands modelled in this entry, 2 are monoatomic - leaving 2 for Mogul analysis.

In the following table, the Counts columns list the number of bonds (or angles) for which Mogul statistics could be retrieved, the number of bonds (or angles) that are observed in the model and the number of bonds (or angles) that are defined in the Chemical Component Dictionary. The Link column lists molecule types, if any, to which the group is linked. The Z score for a bond length (or angle) is the number of standard deviations the observed value is removed from the expected value. A bond length (or angle) with $|Z| > 2$ is considered an outlier worth inspection. RMSZ is the root-mean-square of all Z scores of the bond lengths (or angles).

Mol	Type	Chain	Res	Link	Bond lengths			Bond angles		
					Counts	RMSZ	# Z > 2	Counts	RMSZ	# Z > 2
2	L2G	B	1506	-	46,52,52	0.99	3 (6%)	55,76,76	1.94	10 (18%)
2	L2G	A	1506	-	46,52,52	1.19	6 (13%)	55,76,76	1.87	7 (12%)

In the following table, the Chirals column lists the number of chiral outliers, the number of chiral centers analysed, the number of these observed in the model and the number defined in the Chemical Component Dictionary. Similar counts are reported in the Torsion and Rings columns.

'-' means no outliers of that kind were identified.

Mol	Type	Chain	Res	Link	Chirals	Torsions	Rings
2	L2G	B	1506	-	-	4/15/46/46	0/7/7/7
2	L2G	A	1506	-	-	4/15/46/46	0/7/7/7

All (9) bond length outliers are listed below:

Mol	Chain	Res	Type	Atoms	Z	Observed(Å)	Ideal(Å)
2	A	1506	L2G	C26-C24	-3.62	1.33	1.41
2	B	1506	L2G	C26-C24	-3.09	1.34	1.41
2	B	1506	L2G	C20-N8	2.43	1.41	1.36
2	A	1506	L2G	C7-C9	2.20	1.41	1.36
2	A	1506	L2G	C12-C8	-2.15	1.35	1.40
2	B	1506	L2G	C11-N3	2.10	1.35	1.32
2	A	1506	L2G	C6-C8	2.07	1.40	1.36
2	A	1506	L2G	C11-N3	2.05	1.35	1.32
2	A	1506	L2G	C32-C30	2.04	1.41	1.36

All (17) bond angle outliers are listed below:

Mol	Chain	Res	Type	Atoms	Z	Observed(°)	Ideal(°)
2	A	1506	L2G	C21-C26-C24	8.76	113.91	106.27
2	B	1506	L2G	C21-C26-C24	8.75	113.90	106.27
2	A	1506	L2G	N3-C11-N4	-5.16	120.61	128.68
2	B	1506	L2G	N3-C11-N4	-5.14	120.64	128.68
2	B	1506	L2G	O1-C8-C12	4.32	120.10	114.80
2	B	1506	L2G	O1-C8-C6	-4.21	119.79	125.24
2	A	1506	L2G	O1-C8-C6	-4.12	119.91	125.24
2	A	1506	L2G	O1-C8-C12	3.91	119.60	114.80
2	B	1506	L2G	C26-C24-N8	-3.22	105.78	109.17
2	A	1506	L2G	C26-C24-N8	-3.08	105.93	109.17
2	B	1506	L2G	C23-C28-N9	-2.74	104.56	110.44
2	B	1506	L2G	C22-C27-N9	-2.34	105.42	110.44
2	A	1506	L2G	C20-C21-C26	-2.34	103.64	106.55
2	A	1506	L2G	C23-C28-N9	-2.27	105.57	110.44
2	B	1506	L2G	C12-N6-C18	-2.20	120.88	126.93
2	B	1506	L2G	C20-C21-C26	-2.09	103.94	106.55
2	B	1506	L2G	C30-C26-C21	-2.04	126.08	133.00

There are no chirality outliers.

All (8) torsion outliers are listed below:

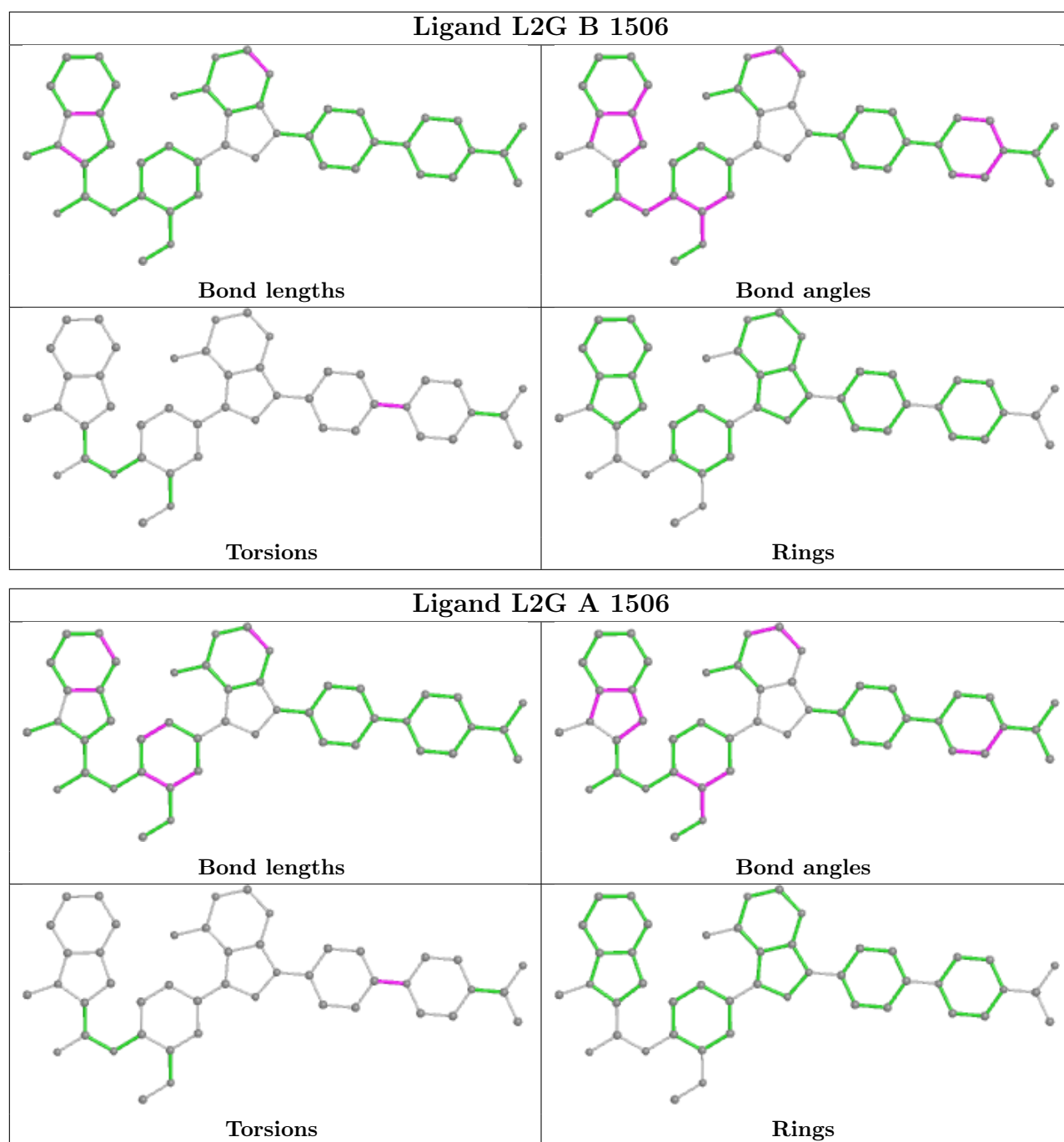
Mol	Chain	Res	Type	Atoms
2	A	1506	L2G	C16-C19-N7-C22
2	A	1506	L2G	C17-C19-N7-C22
2	A	1506	L2G	C17-C19-N7-C23
2	A	1506	L2G	C16-C19-N7-C23
2	B	1506	L2G	C17-C19-N7-C22
2	B	1506	L2G	C16-C19-N7-C22
2	B	1506	L2G	C17-C19-N7-C23
2	B	1506	L2G	C16-C19-N7-C23

There are no ring outliers.

2 monomers are involved in 8 short contacts:

Mol	Chain	Res	Type	Clashes	Symm-Clashes
2	B	1506	L2G	4	0
2	A	1506	L2G	4	0

The following is a two-dimensional graphical depiction of Mogul quality analysis of bond lengths, bond angles, torsion angles, and ring geometry for all instances of the Ligand of Interest. In addition, ligands with molecular weight > 250 and outliers as shown on the validation Tables will also be included. For torsion angles, if less than 5% of the Mogul distribution of torsion angles is within 10 degrees of the torsion angle in question, then that torsion angle is considered an outlier. Any bond that is central to one or more torsion angles identified as an outlier by Mogul will be highlighted in the graph. For rings, the root-mean-square deviation (RMSD) between the ring in question and similar rings identified by Mogul is calculated over all ring torsion angles. If the average RMSD is greater than 60 degrees and the minimal RMSD between the ring in question and any Mogul-identified rings is also greater than 60 degrees, then that ring is considered an outlier. The outliers are highlighted in purple. The color gray indicates Mogul did not find sufficient equivalents in the CSD to analyse the geometry.



5.7 Other polymers [\(i\)](#)

There are no such residues in this entry.

5.8 Polymer linkage issues [\(i\)](#)

There are no chain breaks in this entry.

6 Fit of model and data [i](#)

6.1 Protein, DNA and RNA chains [i](#)

In the following table, the column labelled ‘#RSRZ > 2’ contains the number (and percentage) of RSRZ outliers, followed by percent RSRZ outliers for the chain as percentile scores relative to all X-ray entries and entries of similar resolution. The OWAB column contains the minimum, median, 95th percentile and maximum values of the occupancy-weighted average B-factor per residue. The column labelled ‘Q < 0.9’ lists the number of (and percentage) of residues with an average occupancy less than 0.9.

Mol	Chain	Analysed	<RSRZ>	#RSRZ>2	OWAB(Å ²)	Q<0.9
1	A	433/454 (95%)	0.32	3 (0%) 87 87	35, 51, 66, 75	0
1	B	433/454 (95%)	0.37	17 (3%) 39 34	35, 52, 66, 75	0
All	All	866/908 (95%)	0.35	20 (2%) 60 57	35, 52, 66, 75	0

All (20) RSRZ outliers are listed below:

Mol	Chain	Res	Type	RSRZ
1	A	187	PHE	3.4
1	B	443	PRO	3.2
1	A	182	LEU	3.1
1	A	183	ASP	2.7
1	B	182	LEU	2.7
1	B	183	ASP	2.4
1	B	263[A]	HIS	2.4
1	B	408	ILE	2.4
1	B	105	GLY	2.4
1	B	439	GLY	2.4
1	B	445	VAL	2.3
1	B	453	TYR	2.2
1	B	449	LEU	2.1
1	B	357	ILE	2.1
1	B	149	ILE	2.1
1	B	187	PHE	2.0
1	B	118	LEU	2.0
1	B	409	ASN	2.0
1	B	438	PRO	2.0
1	B	447	ARG	2.0

6.2 Non-standard residues in protein, DNA, RNA chains [i](#)

In the following table, the Atoms column lists the number of modelled atoms in the group and the number defined in the chemical component dictionary. The B-factors column lists the minimum, median, 95th percentile and maximum values of B factors of atoms in the group. The column labelled 'Q< 0.9' lists the number of atoms with occupancy less than 0.9.

Mol	Type	Chain	Res	Atoms	RSCC	RSR	B-factors(Å ²)	Q<0.9
1	PTR	A	501	16/17	0.97	0.20	49,52,54,54	0
1	PTR	B	501	16/17	0.97	0.17	49,51,53,54	0

6.3 Carbohydrates [i](#)

There are no monosaccharides in this entry.

6.4 Ligands [i](#)

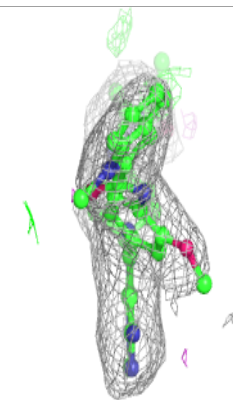
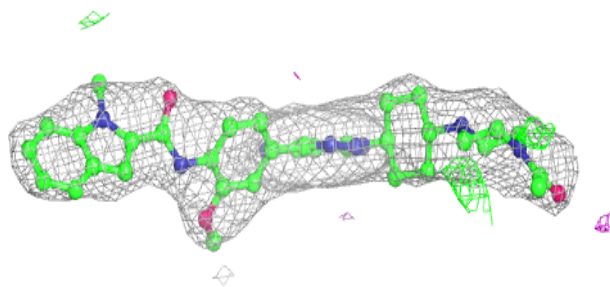
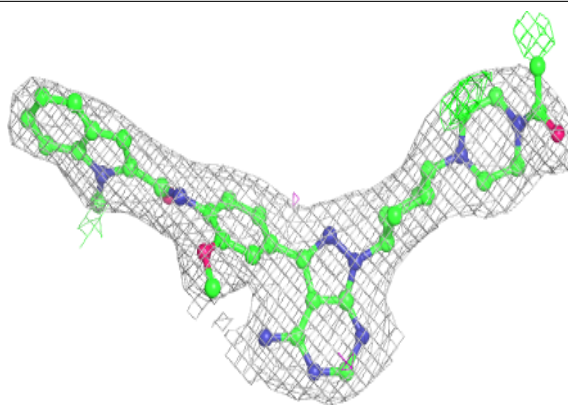
In the following table, the Atoms column lists the number of modelled atoms in the group and the number defined in the chemical component dictionary. The B-factors column lists the minimum, median, 95th percentile and maximum values of B factors of atoms in the group. The column labelled 'Q< 0.9' lists the number of atoms with occupancy less than 0.9.

Mol	Type	Chain	Res	Atoms	RSCC	RSR	B-factors(Å ²)	Q<0.9
2	L2G	B	1506	46/46	0.96	0.23	40,47,62,66	0
3	CA	B	1507	1/1	0.96	0.25	48,48,48,48	0
2	L2G	A	1506	46/46	0.97	0.25	40,46,63,67	0
3	CA	A	1507	1/1	0.98	0.21	43,43,43,43	0

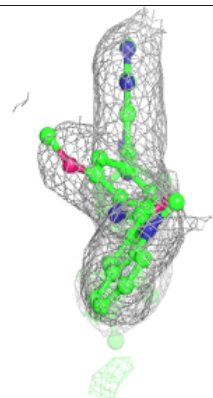
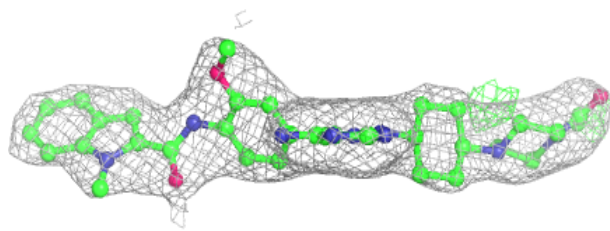
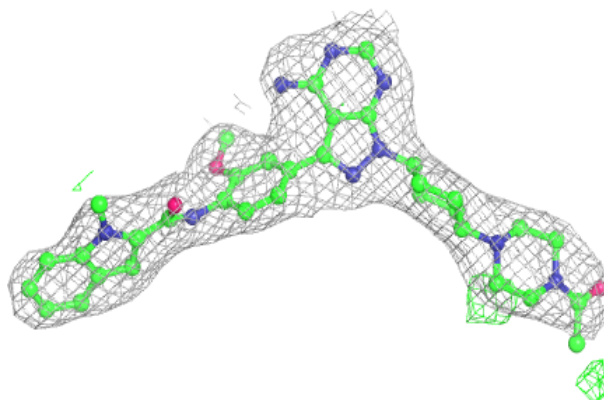
The following is a graphical depiction of the model fit to experimental electron density of all instances of the Ligand of Interest. In addition, ligands with molecular weight > 250 and outliers as shown on the geometry validation Tables will also be included. Each fit is shown from different orientation to approximate a three-dimensional view.

Electron density around L2G B 1506:

$2mF_o-DF_c$ (at 0.7 rmsd) in gray
 mF_o-DF_c (at 3 rmsd) in purple (negative)
and green (positive)

**Electron density around L2G A 1506:**

$2mF_o-DF_c$ (at 0.7 rmsd) in gray
 mF_o-DF_c (at 3 rmsd) in purple (negative)
and green (positive)



6.5 Other polymers [i](#)

There are no such residues in this entry.