



# Full wwPDB X-ray Structure Validation Report ⓘ

Oct 16, 2023 – 05:34 PM EDT

PDB ID : 2ABI  
Title : Crystal structure of the human mineralocorticoid receptor ligand-binding domain bound to deoxycorticosterone  
Authors : Huyet, J.; Pinon, G.-M.; Rochel, M.; Mayer, C.; Rafestin-Oblin, M.-E.; Fagart, J.  
Deposited on : 2005-07-15  
Resolution : 2.33 Å(reported)

This is a Full wwPDB X-ray Structure Validation Report for a publicly released PDB entry.

We welcome your comments at [validation@mail.wwpdb.org](mailto:validation@mail.wwpdb.org)

A user guide is available at

<https://www.wwpdb.org/validation/2017/XrayValidationReportHelp>

with specific help available everywhere you see the ⓘ symbol.

The types of validation reports are described at

<http://www.wwpdb.org/validation/2017/FAQs#types>.

---

The following versions of software and data (see [references ⓘ](#)) were used in the production of this report:

MolProbity : 4.02b-467  
Mogul : 1.8.5 (274361), CSD as541be (2020)  
Xtriage (Phenix) : 1.13  
EDS : 2.36  
buster-report : 1.1.7 (2018)  
Percentile statistics : 20191225.v01 (using entries in the PDB archive December 25th 2019)  
Refmac : 5.8.0158  
CCP4 : 7.0.044 (Gargrove)  
Ideal geometry (proteins) : Engh & Huber (2001)  
Ideal geometry (DNA, RNA) : Parkinson et al. (1996)  
Validation Pipeline (wwPDB-VP) : 2.36

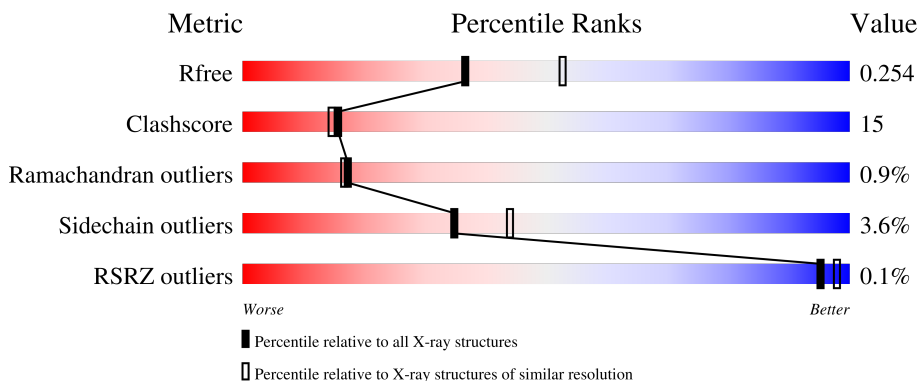
# 1 Overall quality at a glance

The following experimental techniques were used to determine the structure:

*X-RAY DIFFRACTION*


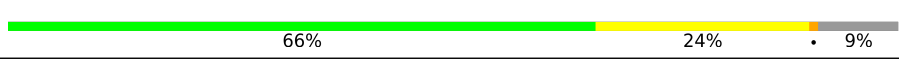
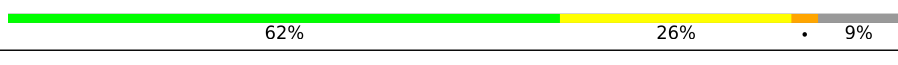
The reported resolution of this entry is 2.33 Å.

Percentile scores (ranging between 0-100) for global validation metrics of the entry are shown in the following graphic. The table shows the number of entries on which the scores are based.



Metric	Whole archive (#Entries)	Similar resolution (#Entries, resolution range(Å))
$R_{free}$	130704	2096 (2.36-2.32)
Clashscore	141614	2193 (2.36-2.32)
Ramachandran outliers	138981	2159 (2.36-2.32)
Sidechain outliers	138945	2160 (2.36-2.32)
RSRZ outliers	127900	2067 (2.36-2.32)

The table below summarises the geometric issues observed across the polymeric chains and their fit to the electron density. The red, orange, yellow and green segments of the lower bar indicate the fraction of residues that contain outliers for  $\geq 3$ , 2, 1 and 0 types of geometric quality criteria respectively. A grey segment represents the fraction of residues that are not modelled. The numeric value for each fraction is indicated below the corresponding segment, with a dot representing fractions  $\leq 5\%$ . The upper red bar (where present) indicates the fraction of residues that have poor fit to the electron density. The numeric value is given above the bar.

Mol	Chain	Length	Quality of chain
1	A	256	 61% 27% • 10%
1	B	256	 66% 24% • 9%
1	C	256	 62% 26% • 9%

## 2 Entry composition

There are 3 unique types of molecules in this entry. The entry contains 6075 atoms, of which 0 are hydrogens and 0 are deuteriums.

In the tables below, the ZeroOcc column contains the number of atoms modelled with zero occupancy, the AltConf column contains the number of residues with at least one atom in alternate conformation and the Trace column contains the number of residues modelled with at most 2 atoms.

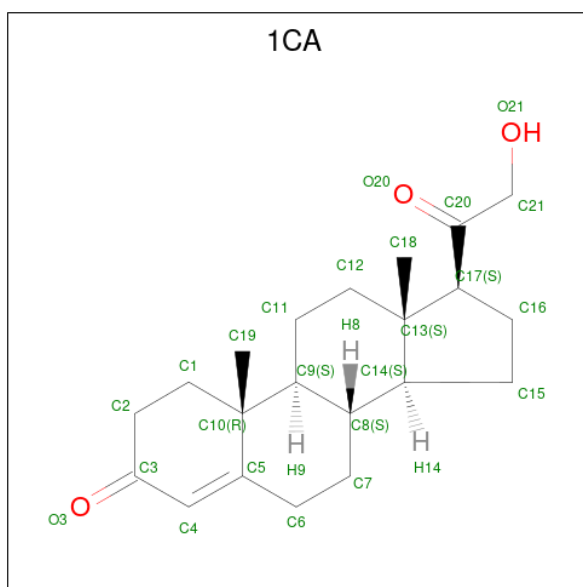
- Molecule 1 is a protein called Mineralocorticoid receptor.

Mol	Chain	Residues	Atoms					ZeroOcc	AltConf	Trace
			Total	C	N	O	S			
1	A	230	1851	1208	294	335	14	0	0	0
1	B	234	1897	1238	303	342	14	0	0	0
1	C	234	1874	1219	301	341	13	0	0	0

There are 9 discrepancies between the modelled and reference sequences:

Chain	Residue	Modelled	Actual	Comment	Reference
A	729	GLY	-	cloning artifact	UNP P08235
A	730	SER	-	cloning artifact	UNP P08235
A	910	ALA	CYS	engineered mutation	UNP P08235
B	729	GLY	-	cloning artifact	UNP P08235
B	730	SER	-	cloning artifact	UNP P08235
B	910	ALA	CYS	engineered mutation	UNP P08235
C	729	GLY	-	cloning artifact	UNP P08235
C	730	SER	-	cloning artifact	UNP P08235
C	910	ALA	CYS	engineered mutation	UNP P08235

- Molecule 2 is DESOXYCORTICOSTERONE (three-letter code: 1CA) (formula: C<sub>21</sub>H<sub>30</sub>O<sub>3</sub>).



Mol	Chain	Residues	Atoms	ZeroOcc	AltConf
2	A	1	Total C O 24 21 3	0	0
2	B	1	Total C O 24 21 3	0	0
2	C	1	Total C O 24 21 3	0	0

- Molecule 3 is water.

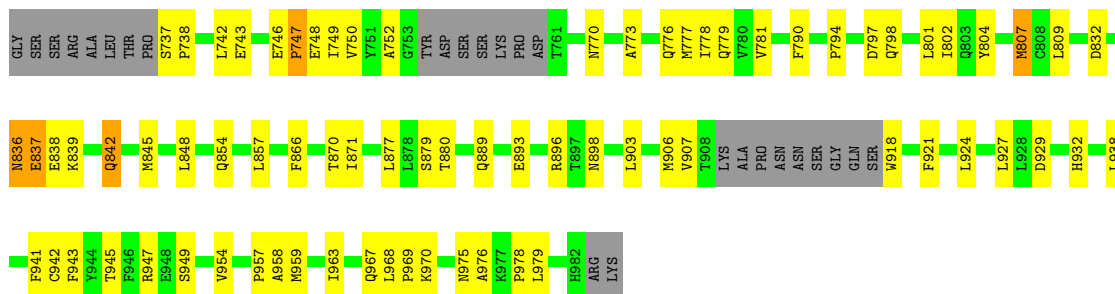
Mol	Chain	Residues	Atoms	ZeroOcc	AltConf
3	A	122	Total O 122 122	0	0
3	B	123	Total O 123 123	0	0
3	C	136	Total O 136 136	0	0

### 3 Residue-property plots i

These plots are drawn for all protein, RNA, DNA and oligosaccharide chains in the entry. The first graphic for a chain summarises the proportions of the various outlier classes displayed in the second graphic. The second graphic shows the sequence view annotated by issues in geometry and electron density. Residues are color-coded according to the number of geometric quality criteria for which they contain at least one outlier: green = 0, yellow = 1, orange = 2 and red = 3 or more. A red dot above a residue indicates a poor fit to the electron density ( $RSRZ > 2$ ). Stretches of 2 or more consecutive residues without any outlier are shown as a green connector. Residues present in the sample, but not in the model, are shown in grey.

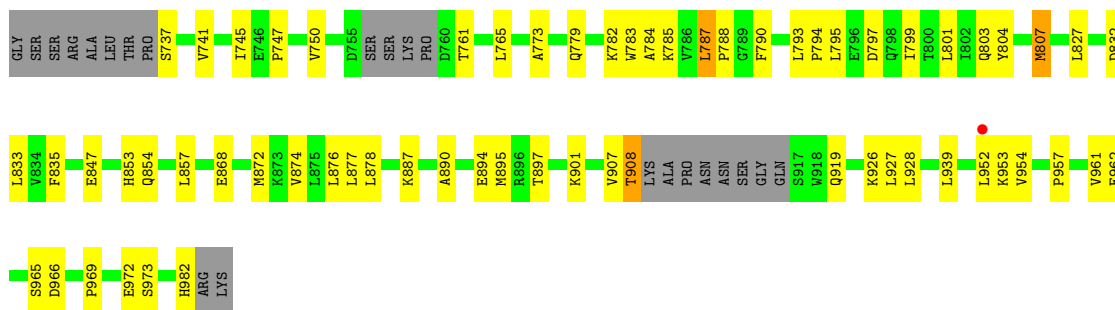
- Molecule 1: Mineralocorticoid receptor

Chain A: 



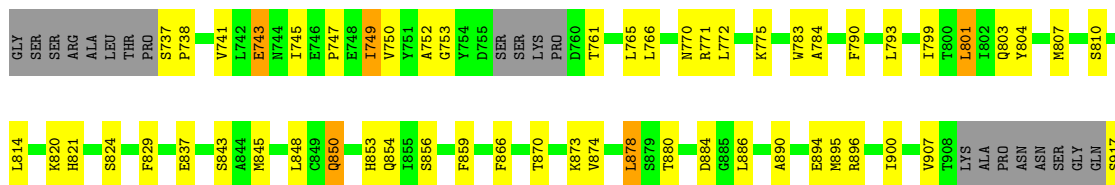
- Molecule 1: Mineralocorticoid receptor

Chain B: 



- Molecule 1: Mineralocorticoid receptor

Chain C: 





## 4 Data and refinement statistics i

Property	Value	Source
Space group	P 31	Depositor
Cell constants a, b, c, $\alpha$ , $\beta$ , $\gamma$	119.77Å 119.77Å 41.50Å 90.00° 90.00° 120.00°	Depositor
Resolution (Å)	39.20 – 2.33 39.20 – 2.33	Depositor EDS
% Data completeness (in resolution range)	87.5 (39.20-2.33) 87.6 (39.20-2.33)	Depositor EDS
$R_{merge}$	0.15	Depositor
$R_{sym}$	0.08	Depositor
$\langle I/\sigma(I) \rangle$ <sup>1</sup>	1.76 (at 2.34Å)	Xtrriage
Refinement program	CNS 1.1	Depositor
R, $R_{free}$	0.207 , 0.264 0.199 , 0.254	Depositor DCC
$R_{free}$ test set	2519 reflections (10.11%)	wwPDB-VP
Wilson B-factor (Å <sup>2</sup> )	38.0	Xtrriage
Anisotropy	0.080	Xtrriage
Bulk solvent $k_{sol}$ (e/Å <sup>3</sup> ), $B_{sol}$ (Å <sup>2</sup> )	0.36 , 71.7	EDS
L-test for twinning <sup>2</sup>	$\langle  L  \rangle = 0.49$ , $\langle L^2 \rangle = 0.32$	Xtrriage
Estimated twinning fraction	0.021 for -h,-k,l 0.035 for h,-h-k,-l 0.000 for -k,-h,-l	Xtrriage
$F_o, F_c$ correlation	0.95	EDS
Total number of atoms	6075	wwPDB-VP
Average B, all atoms (Å <sup>2</sup> )	44.0	wwPDB-VP

Xtrriage's analysis on translational NCS is as follows: *The analyses of the Patterson function reveals a significant off-origin peak that is 26.80 % of the origin peak, indicating pseudo-translational symmetry. The chance of finding a peak of this or larger height randomly in a structure without pseudo-translational symmetry is equal to 2.4659e-03. The detected translational NCS is most likely also responsible for the elevated intensity ratio.*

<sup>1</sup>Intensities estimated from amplitudes.

<sup>2</sup>Theoretical values of  $\langle |L| \rangle$ ,  $\langle L^2 \rangle$  for acentric reflections are 0.5, 0.333 respectively for untwinned datasets, and 0.375, 0.2 for perfectly twinned datasets.

## 5 Model quality [i](#)

### 5.1 Standard geometry [i](#)

Bond lengths and bond angles in the following residue types are not validated in this section: 1CA

The Z score for a bond length (or angle) is the number of standard deviations the observed value is removed from the expected value. A bond length (or angle) with  $|Z| > 5$  is considered an outlier worth inspection. RMSZ is the root-mean-square of all Z scores of the bond lengths (or angles).

Mol	Chain	Bond lengths		Bond angles	
		RMSZ	# Z  >5	RMSZ	# Z  >5
1	A	0.32	0/1895	0.57	0/2570
1	B	0.33	0/1942	0.55	0/2629
1	C	0.34	0/1919	0.56	0/2600
All	All	0.33	0/5756	0.56	0/7799

There are no bond length outliers.

There are no bond angle outliers.

There are no chirality outliers.

There are no planarity outliers.

### 5.2 Too-close contacts [i](#)

In the following table, the Non-H and H(model) columns list the number of non-hydrogen atoms and hydrogen atoms in the chain respectively. The H(added) column lists the number of hydrogen atoms added and optimized by MolProbity. The Clashes column lists the number of clashes within the asymmetric unit, whereas Symm-Clashes lists symmetry-related clashes.

Mol	Chain	Non-H	H(model)	H(added)	Clashes	Symm-Clashes
1	A	1851	0	1815	62	0
1	B	1897	0	1879	46	0
1	C	1874	0	1823	58	0
2	A	24	0	30	4	0
2	B	24	0	30	3	0
2	C	24	0	30	2	0
3	A	122	0	0	2	0
3	B	123	0	0	2	0
3	C	136	0	0	4	0
All	All	6075	0	5607	166	0



The all-atom clashscore is defined as the number of clashes found per 1000 atoms (including hydrogen atoms). The all-atom clashscore for this structure is 15.

All (166) close contacts within the same asymmetric unit are listed below, sorted by their clash magnitude.

Atom-1	Atom-2	Interatomic distance (Å)	Clash overlap (Å)
1:A:968:LEU:HD23	1:A:969:PRO:HD3	1.60	0.82
1:A:742:LEU:HD23	1:A:870:THR:HG22	1.64	0.80
1:B:827:LEU:HB2	1:B:835:PHE:HB2	1.66	0.78
1:A:742:LEU:HB3	1:A:870:THR:HG21	1.64	0.77
1:A:807:MET:HE1	2:A:1001:1CA:H152	1.67	0.76
1:C:804:TYR:HD1	1:C:880:THR:HG22	1.53	0.73
1:C:935:VAL:O	1:C:939:LEU:HD13	1.91	0.69
1:B:807:MET:HE1	2:B:2001:1CA:H62	1.74	0.69
1:A:776:GLN:O	1:A:779:GLN:HB3	1.94	0.68
1:A:845:MET:HG3	1:A:848:LEU:HD12	1.76	0.68
1:B:890:ALA:O	1:B:894:GLU:HG2	1.96	0.66
1:C:845:MET:HG3	1:C:848:LEU:HD12	1.78	0.66
1:C:866:PHE:O	1:C:870:THR:HG23	1.95	0.65
1:A:836:ASN:HD22	1:A:837:GLU:H	1.43	0.65
1:C:761:THR:O	1:C:765:LEU:HD13	1.98	0.63
1:A:750:VAL:HG13	3:A:4201:HOH:O	1.97	0.63
1:C:743:GLU:HG2	1:C:866:PHE:CE2	2.33	0.62
1:A:738:PRO:O	1:A:742:LEU:HD13	2.00	0.62
1:B:807:MET:HE3	1:B:807:MET:HA	1.80	0.62
1:C:743:GLU:HG2	1:C:866:PHE:HE2	1.63	0.62
1:A:896:ARG:CZ	1:A:979:LEU:HD23	2.30	0.62
1:A:742:LEU:HB3	1:A:870:THR:CG2	2.30	0.61
1:C:907:VAL:HG12	1:C:917:SER:O	2.00	0.61
1:B:868:GLU:O	1:B:872:MET:HG3	2.00	0.61
1:B:787:LEU:HD23	1:B:788:PRO:HD2	1.82	0.61
1:C:770:ASN:HB3	1:C:957:PRO:HD3	1.83	0.60
1:B:794:PRO:HG3	1:B:887:LYS:HD3	1.84	0.60
1:A:842:GLN:HE21	1:A:842:GLN:HA	1.66	0.59
1:C:737:SER:HB3	1:C:738:PRO:HD3	1.84	0.59
1:A:747:PRO:HB3	1:A:779:GLN:HG3	1.85	0.59
1:B:907:VAL:HG23	1:B:908:THR:HG22	1.83	0.59
1:B:747:PRO:HB3	1:B:779:GLN:HB3	1.84	0.58
1:A:836:ASN:ND2	1:A:837:GLU:H	2.00	0.58
1:B:807:MET:HG3	1:B:939:LEU:CD2	2.33	0.58
1:C:771:ARG:HG2	1:C:775:LYS:HE3	1.85	0.58
1:C:750:VAL:HG11	1:C:775:LYS:HB3	1.86	0.57
1:A:778:ILE:HG13	1:A:779:GLN:N	2.19	0.57

*Continued on next page...*

*Continued from previous page...*

Atom-1	Atom-2	Interatomic distance (Å)	Clash overlap (Å)
1:A:879:SER:HB2	3:A:4331:HOH:O	2.03	0.57
1:C:968:LEU:HB3	1:C:969:PRO:HD3	1.85	0.57
1:B:874:VAL:O	1:B:877:LEU:HB3	2.06	0.56
1:B:966:ASP:O	1:B:969:PRO:HD2	2.06	0.56
1:A:854:GLN:OE1	1:A:857:LEU:HD12	2.05	0.56
1:A:804:TYR:HD1	1:A:880:THR:HG22	1.71	0.56
1:A:802:ILE:HD13	1:A:877:LEU:HD21	1.88	0.55
1:A:889:GLN:O	1:A:893:GLU:HG3	2.06	0.55
1:A:959:MET:O	1:A:963:ILE:HG13	2.06	0.55
1:A:848:LEU:HD13	1:A:938:LEU:HD23	1.87	0.55
1:A:968:LEU:CD2	1:A:969:PRO:HD3	2.34	0.55
1:C:949:SER:HB2	1:C:954:VAL:O	2.06	0.55
1:B:957:PRO:O	1:B:961:VAL:HG23	2.07	0.55
1:A:790:PHE:CE1	1:A:877:LEU:HD11	2.43	0.53
1:A:907:VAL:HG21	1:A:921:PHE:HB2	1.90	0.53
1:B:737:SER:O	1:B:741:VAL:HG23	2.09	0.53
1:C:907:VAL:HG13	1:C:920:ARG:HB3	1.91	0.53
1:A:941:PHE:O	1:A:945:THR:HG23	2.08	0.53
1:A:942:CYS:HA	2:A:1001:1CA:O20	2.08	0.53
1:C:770:ASN:O	1:C:957:PRO:HG2	2.09	0.53
1:C:874:VAL:O	1:C:878:LEU:HD22	2.08	0.53
1:C:927:LEU:HD23	1:C:927:LEU:O	2.09	0.53
1:C:959:MET:O	1:C:963:ILE:HG22	2.09	0.53
1:C:907:VAL:CG1	1:C:920:ARG:HB3	2.39	0.52
1:C:957:PRO:O	1:C:961:VAL:HG23	2.09	0.52
1:A:903:LEU:O	1:A:906:MET:HB3	2.08	0.52
1:A:798:GLN:O	1:A:802:ILE:HG12	2.10	0.52
1:C:920:ARG:HH11	1:C:920:ARG:HG3	1.74	0.52
1:C:942:CYS:HA	2:C:3001:1CA:O20	2.10	0.52
1:B:872:MET:HB3	1:B:928:LEU:HD21	1.92	0.52
1:C:752:ALA:HA	1:C:772:LEU:HD13	1.92	0.52
1:C:807:MET:HG2	1:C:939:LEU:CD1	2.41	0.51
1:C:957:PRO:HD2	1:C:960:LEU:HB2	1.93	0.51
1:A:777:MET:O	1:A:781:VAL:HG23	2.10	0.51
1:C:749:ILE:H	1:C:749:ILE:HD12	1.76	0.51
1:A:838:GLU:O	1:A:842:GLN:HG2	2.12	0.50
1:B:833:LEU:HD11	1:B:835:PHE:HE1	1.77	0.50
1:A:836:ASN:HD22	1:A:837:GLU:N	2.09	0.49
1:A:976:ALA:O	1:A:978:PRO:HD3	2.12	0.49
1:B:807:MET:HG3	1:B:939:LEU:HD23	1.93	0.49
1:A:932:HIS:CE1	1:A:978:PRO:HB3	2.46	0.49

*Continued on next page...*

*Continued from previous page...*

Atom-1	Atom-2	Interatomic distance (Å)	Clash overlap (Å)
1:C:783:TRP:CH2	1:C:873:LYS:HG2	2.47	0.49
1:C:799:ILE:O	1:C:803:GLN:HG3	2.12	0.49
1:B:952:LEU:HB2	1:B:954:VAL:HG12	1.95	0.49
1:C:793:LEU:HG	1:C:895:MET:HE1	1.94	0.49
1:A:929:ASP:O	1:A:932:HIS:HB2	2.12	0.49
1:B:797:ASP:O	1:B:801:LEU:HG	2.14	0.48
1:C:890:ALA:O	1:C:894:GLU:HG2	2.14	0.48
1:B:927:LEU:HD23	1:B:927:LEU:O	2.14	0.47
1:C:850:GLN:O	1:C:854:GLN:HG2	2.15	0.47
1:A:743:GLU:HG2	1:A:866:PHE:HE2	1.80	0.47
1:C:741:VAL:O	1:C:745:ILE:HG12	2.16	0.46
1:C:919:GLN:HG3	1:C:920:ARG:N	2.29	0.46
1:A:773:ALA:O	1:A:777:MET:HG2	2.16	0.46
1:A:927:LEU:O	1:A:927:LEU:HD23	2.16	0.46
1:C:810:SER:HB3	2:C:3001:1CA:H192	1.97	0.46
1:C:884:ASP:HB2	3:C:4278:HOH:O	2.16	0.46
1:C:803:GLN:HB3	3:C:4040:HOH:O	2.15	0.46
1:B:954:VAL:HG13	1:B:954:VAL:O	2.15	0.46
1:A:927:LEU:HD23	1:A:927:LEU:C	2.37	0.46
1:A:877:LEU:HD13	1:A:877:LEU:O	2.15	0.45
1:B:741:VAL:O	1:B:745:ILE:HG12	2.17	0.45
1:C:878:LEU:HB3	1:C:896:ARG:HG3	1.99	0.45
1:C:837:GLU:HB2	3:C:4173:HOH:O	2.15	0.45
1:C:957:PRO:HD2	1:C:960:LEU:HG	1.98	0.45
1:A:845:MET:O	1:A:845:MET:HG2	2.17	0.45
1:A:903:LEU:O	1:A:907:VAL:HG22	2.16	0.45
1:B:784:ALA:HB1	1:B:790:PHE:CE2	2.51	0.45
1:B:787:LEU:HD23	1:B:788:PRO:CD	2.47	0.45
1:B:965:SER:O	1:B:969:PRO:HD3	2.16	0.45
1:B:854:GLN:HG2	3:B:4091:HOH:O	2.17	0.44
1:C:870:THR:O	1:C:874:VAL:HG23	2.16	0.44
1:A:737:SER:HB3	1:A:738:PRO:HD3	1.99	0.44
1:A:752:ALA:HB3	1:A:832:ASP:OD1	2.17	0.44
1:B:790:PHE:HE1	1:B:801:LEU:HD12	1.82	0.44
1:B:966:ASP:C	1:B:969:PRO:HD2	2.37	0.44
1:C:749:ILE:H	1:C:749:ILE:CD1	2.30	0.44
1:B:876:LEU:HD21	1:B:928:LEU:HD22	1.99	0.44
1:C:907:VAL:HG11	1:C:921:PHE:N	2.33	0.44
1:A:743:GLU:HG2	1:A:866:PHE:CE2	2.53	0.44
1:B:747:PRO:HG3	1:B:783:TRP:HB2	1.98	0.44
1:C:766:LEU:HD11	1:C:843:SER:O	2.18	0.44

*Continued on next page...*

*Continued from previous page...*

Atom-1	Atom-2	Interatomic distance (Å)	Clash overlap (Å)
1:A:742:LEU:CD2	1:A:871:ILE:HD13	2.48	0.43
1:A:949:SER:HB2	1:A:954:VAL:O	2.18	0.43
1:A:746:GLU:HA	1:A:747:PRO:HD3	1.82	0.43
1:A:809:LEU:HD11	1:A:877:LEU:HD23	1.99	0.43
1:A:748:GLU:HB3	1:A:749:ILE:H	1.59	0.43
1:B:799:ILE:O	1:B:803:GLN:HG3	2.19	0.43
1:C:820:LYS:HG3	1:C:821:HIS:CD2	2.53	0.43
1:C:896:ARG:O	1:C:900:ILE:HG13	2.19	0.43
1:C:920:ARG:HG3	1:C:920:ARG:NH1	2.34	0.43
1:A:943:PHE:CE2	1:A:968:LEU:HB3	2.54	0.42
1:B:807:MET:HG3	1:B:939:LEU:HD21	2.00	0.42
1:B:926:LYS:HA	1:B:982:HIS:CD2	2.55	0.42
1:A:943:PHE:CD2	1:A:968:LEU:HB3	2.55	0.42
1:A:947:ARG:HB2	1:A:947:ARG:NH1	2.33	0.42
1:A:770:ASN:OD1	2:A:1001:1CA:H121	2.19	0.42
1:C:801:LEU:HD11	1:C:886:LEU:HD11	2.01	0.42
1:A:737:SER:N	1:A:738:PRO:CD	2.82	0.42
1:B:953:LYS:O	1:B:953:LYS:HG3	2.19	0.42
1:C:753:GLY:HA2	3:C:4279:HOH:O	2.19	0.42
1:C:926:LYS:HE2	1:C:926:LYS:HB3	1.83	0.42
1:A:970:LYS:O	1:A:975:ASN:HB2	2.19	0.42
1:B:782:LYS:HA	1:B:785:LYS:HD3	2.00	0.42
1:B:897:THR:O	1:B:901:LYS:HG3	2.19	0.42
1:A:773:ALA:HB2	2:A:1001:1CA:H11	2.00	0.42
1:C:845:MET:CG	1:C:848:LEU:HD12	2.49	0.42
1:B:750:VAL:HG13	1:B:779:GLN:OE1	2.20	0.42
1:A:778:ILE:CG1	1:A:779:GLN:N	2.83	0.42
1:B:927:LEU:HD23	1:B:927:LEU:C	2.39	0.42
1:C:804:TYR:CD1	1:C:880:THR:HG22	2.43	0.42
1:C:814:LEU:HD13	1:C:829:PHE:HA	2.01	0.42
1:C:856:SER:O	1:C:859:PHE:HB2	2.19	0.42
1:B:853:HIS:O	1:B:857:LEU:HD13	2.20	0.41
1:B:773:ALA:HB2	2:B:2001:1CA:H11	2.02	0.41
1:B:795:LEU:O	1:B:799:ILE:HG13	2.20	0.41
1:B:793:LEU:HG	1:B:895:MET:HE1	2.02	0.41
1:C:784:ALA:HB1	1:C:790:PHE:CE2	2.56	0.41
1:C:824:SER:O	1:C:853:HIS:NE2	2.52	0.41
1:C:747:PRO:HG3	1:C:783:TRP:HB2	2.03	0.41
1:B:807:MET:CE	2:B:2001:1CA:H62	2.47	0.41
1:A:794:PRO:HD2	1:A:797:ASP:OD2	2.21	0.40
1:B:761:THR:O	1:B:765:LEU:HD12	2.21	0.40

*Continued on next page...*

Continued from previous page...

Atom-1	Atom-2	Interatomic distance (Å)	Clash overlap (Å)
1:A:924:LEU:HD23	1:A:924:LEU:HA	1.89	0.40
1:A:839:LYS:HA	1:A:842:GLN:HB2	2.03	0.40
1:A:898:ASN:HD22	1:A:898:ASN:HA	1.64	0.40
1:B:832:ASP:N	1:B:832:ASP:OD2	2.49	0.40
1:C:747:PRO:CG	1:C:783:TRP:HB2	2.51	0.40
1:B:779:GLN:HG2	3:B:4332:HOH:O	2.22	0.40

There are no symmetry-related clashes.

## 5.3 Torsion angles [i](#)

### 5.3.1 Protein backbone [i](#)

In the following table, the Percentiles column shows the percent Ramachandran outliers of the chain as a percentile score with respect to all X-ray entries followed by that with respect to entries of similar resolution.

The Analysed column shows the number of residues for which the backbone conformation was analysed, and the total number of residues.

Mol	Chain	Analysed	Favoured	Allowed	Outliers	Percentiles	
1	A	224/256 (88%)	212 (95%)	8 (4%)	4 (2%)	8	5
1	B	228/256 (89%)	217 (95%)	9 (4%)	2 (1%)	17	17
1	C	228/256 (89%)	219 (96%)	9 (4%)	0	100	100
All	All	680/768 (88%)	648 (95%)	26 (4%)	6 (1%)	17	17

All (6) Ramachandran outliers are listed below:

Mol	Chain	Res	Type
1	A	957	PRO
1	A	958	ALA
1	B	972	GLU
1	B	973	SER
1	A	967	GLN
1	A	747	PRO

### 5.3.2 Protein sidechains

In the following table, the Percentiles column shows the percent sidechain outliers of the chain as a percentile score with respect to all X-ray entries followed by that with respect to entries of similar resolution.

The Analysed column shows the number of residues for which the sidechain conformation was analysed, and the total number of residues.

Mol	Chain	Analysed	Rotameric	Outliers	Percentiles	
1	A	202/234 (86%)	196 (97%)	6 (3%)	41	50
1	B	209/234 (89%)	201 (96%)	8 (4%)	33	41
1	C	203/234 (87%)	195 (96%)	8 (4%)	32	41
All	All	614/702 (88%)	592 (96%)	22 (4%)	35	44

All (22) residues with a non-rotameric sidechain are listed below:

Mol	Chain	Res	Type
1	A	801	LEU
1	A	807	MET
1	A	836	ASN
1	A	837	GLU
1	A	842	GLN
1	A	918	TRP
1	B	787	LEU
1	B	804	TYR
1	B	807	MET
1	B	847	GLU
1	B	878	LEU
1	B	908	THR
1	B	919	GLN
1	B	962	GLU
1	C	743	GLU
1	C	749	ILE
1	C	801	LEU
1	C	850	GLN
1	C	878	LEU
1	C	919	GLN
1	C	960	LEU
1	C	970	LYS

Sometimes sidechains can be flipped to improve hydrogen bonding and reduce clashes. All (17) such sidechains are listed below:

Mol	Chain	Res	Type
1	A	803	GLN
1	A	823	ASN
1	A	825	GLN
1	A	836	ASN
1	A	842	GLN
1	A	858	GLN
1	A	898	ASN
1	A	975	ASN
1	B	764	ASN
1	B	854	GLN
1	B	919	GLN
1	B	975	ASN
1	C	779	GLN
1	C	850	GLN
1	C	854	GLN
1	C	898	ASN
1	C	975	ASN

### 5.3.3 RNA [i](#)

There are no RNA molecules in this entry.

### 5.4 Non-standard residues in protein, DNA, RNA chains [i](#)

There are no non-standard protein/DNA/RNA residues in this entry.

### 5.5 Carbohydrates [i](#)

There are no monosaccharides in this entry.

### 5.6 Ligand geometry [i](#)

3 ligands are modelled in this entry.

In the following table, the Counts columns list the number of bonds (or angles) for which Mogul statistics could be retrieved, the number of bonds (or angles) that are observed in the model and the number of bonds (or angles) that are defined in the Chemical Component Dictionary. The Link column lists molecule types, if any, to which the group is linked. The Z score for a bond length (or angle) is the number of standard deviations the observed value is removed from the expected value. A bond length (or angle) with  $|Z| > 2$  is considered an outlier worth inspection. RMSZ is the root-mean-square of all Z scores of the bond lengths (or angles).

Mol	Type	Chain	Res	Link	Bond lengths			Bond angles		
					Counts	RMSZ	# Z  > 2	Counts	RMSZ	# Z  > 2
2	1CA	B	2001	-	27,27,27	4.65	21 (77%)	42,43,43	1.55	5 (11%)
2	1CA	C	3001	-	27,27,27	4.49	18 (66%)	42,43,43	1.68	9 (21%)
2	1CA	A	1001	-	27,27,27	5.00	16 (59%)	42,43,43	1.46	4 (9%)

In the following table, the Chirals column lists the number of chiral outliers, the number of chiral centers analysed, the number of these observed in the model and the number defined in the Chemical Component Dictionary. Similar counts are reported in the Torsion and Rings columns. '-' means no outliers of that kind were identified.

Mol	Type	Chain	Res	Link	Chirals	Torsions	Rings
2	1CA	B	2001	-	-	0/6/64/64	0/4/4/4
2	1CA	C	3001	-	-	0/6/64/64	0/4/4/4
2	1CA	A	1001	-	-	2/6/64/64	0/4/4/4

All (55) bond length outliers are listed below:

Mol	Chain	Res	Type	Atoms	Z	Observed(Å)	Ideal(Å)
2	A	1001	1CA	C4-C5	10.90	1.50	1.34
2	B	2001	1CA	C10-C5	10.23	1.73	1.52
2	A	1001	1CA	C8-C9	9.31	1.71	1.53
2	C	3001	1CA	C18-C13	8.96	1.70	1.54
2	C	3001	1CA	C8-C9	8.87	1.70	1.53
2	B	2001	1CA	C8-C9	8.46	1.69	1.53
2	B	2001	1CA	C12-C13	8.30	1.69	1.54
2	A	1001	1CA	C1-C10	8.25	1.69	1.54
2	A	1001	1CA	C12-C13	8.18	1.68	1.54
2	A	1001	1CA	C10-C5	7.58	1.67	1.52
2	C	3001	1CA	C10-C5	7.45	1.67	1.52
2	B	2001	1CA	C4-C5	7.36	1.45	1.34
2	C	3001	1CA	C4-C5	7.23	1.45	1.34
2	B	2001	1CA	C19-C10	7.07	1.66	1.54
2	C	3001	1CA	C1-C10	6.92	1.67	1.54
2	C	3001	1CA	C12-C13	6.91	1.66	1.54
2	A	1001	1CA	C11-C9	6.71	1.65	1.53
2	B	2001	1CA	C18-C13	6.57	1.65	1.54
2	C	3001	1CA	C2-C3	6.40	1.63	1.49
2	A	1001	1CA	C18-C13	6.32	1.65	1.54
2	C	3001	1CA	C10-C9	5.81	1.65	1.56
2	A	1001	1CA	C6-C5	5.79	1.60	1.50
2	A	1001	1CA	O20-C20	5.41	1.31	1.21
2	B	2001	1CA	C1-C10	5.09	1.63	1.54

*Continued on next page...*



Continued from previous page...

Mol	Chain	Res	Type	Atoms	Z	Observed(Å)	Ideal(Å)
2	A	1001	1CA	C13-C14	4.71	1.64	1.55
2	C	3001	1CA	O20-C20	4.65	1.29	1.21
2	A	1001	1CA	C2-C3	4.53	1.59	1.49
2	B	2001	1CA	C10-C9	4.53	1.63	1.56
2	A	1001	1CA	C7-C8	4.47	1.61	1.53
2	A	1001	1CA	C8-C14	4.37	1.62	1.53
2	B	2001	1CA	C13-C14	4.32	1.63	1.55
2	A	1001	1CA	C1-C2	4.14	1.61	1.53
2	B	2001	1CA	O3-C3	-4.06	1.16	1.23
2	B	2001	1CA	C15-C14	4.06	1.62	1.54
2	C	3001	1CA	C8-C14	4.04	1.61	1.53
2	B	2001	1CA	C7-C8	3.94	1.60	1.53
2	B	2001	1CA	C11-C9	3.61	1.59	1.53
2	C	3001	1CA	O3-C3	-3.48	1.17	1.23
2	B	2001	1CA	C6-C5	3.07	1.55	1.50
2	B	2001	1CA	C2-C3	2.97	1.56	1.49
2	A	1001	1CA	C16-C17	2.94	1.62	1.54
2	B	2001	1CA	C13-C17	2.83	1.60	1.56
2	C	3001	1CA	C16-C15	-2.76	1.46	1.54
2	B	2001	1CA	C8-C14	2.76	1.58	1.53
2	B	2001	1CA	C1-C2	2.74	1.58	1.53
2	C	3001	1CA	C21-C20	-2.70	1.43	1.50
2	C	3001	1CA	C6-C5	2.69	1.55	1.50
2	C	3001	1CA	C7-C6	2.48	1.58	1.52
2	C	3001	1CA	C1-C2	2.45	1.58	1.53
2	C	3001	1CA	C17-C20	-2.44	1.47	1.52
2	B	2001	1CA	C21-C20	-2.41	1.44	1.50
2	A	1001	1CA	C19-C10	2.33	1.58	1.54
2	B	2001	1CA	O20-C20	2.30	1.25	1.21
2	C	3001	1CA	C13-C14	2.18	1.59	1.55
2	B	2001	1CA	C7-C6	2.06	1.57	1.52

All (18) bond angle outliers are listed below:

Mol	Chain	Res	Type	Atoms	Z	Observed(°)	Ideal(°)
2	C	3001	1CA	C17-C13-C14	-5.31	94.06	99.72
2	B	2001	1CA	C2-C3-C4	4.89	124.27	116.74
2	A	1001	1CA	C17-C13-C14	-4.72	94.69	99.72
2	C	3001	1CA	C2-C3-C4	4.11	123.07	116.74
2	B	2001	1CA	C17-C13-C14	-3.76	95.71	99.72
2	A	1001	1CA	C2-C3-C4	3.25	121.75	116.74
2	C	3001	1CA	C18-C13-C14	2.84	117.02	111.71

Continued on next page...

*Continued from previous page...*

Mol	Chain	Res	Type	Atoms	Z	Observed(°)	Ideal(°)
2	A	1001	1CA	C19-C10-C5	-2.76	103.88	108.34
2	C	3001	1CA	C15-C14-C13	2.48	106.83	103.84
2	B	2001	1CA	O3-C3-C2	-2.38	116.64	121.57
2	C	3001	1CA	O3-C3-C2	-2.36	116.69	121.57
2	C	3001	1CA	C16-C17-C13	2.26	106.22	104.21
2	C	3001	1CA	C19-C10-C5	-2.16	104.85	108.34
2	B	2001	1CA	C5-C4-C3	-2.14	120.22	123.67
2	C	3001	1CA	C18-C13-C17	2.13	113.70	110.24
2	B	2001	1CA	C18-C13-C17	2.12	113.68	110.24
2	C	3001	1CA	C5-C4-C3	-2.03	120.39	123.67
2	A	1001	1CA	C7-C8-C14	2.01	115.52	112.08

There are no chirality outliers.

All (2) torsion outliers are listed below:

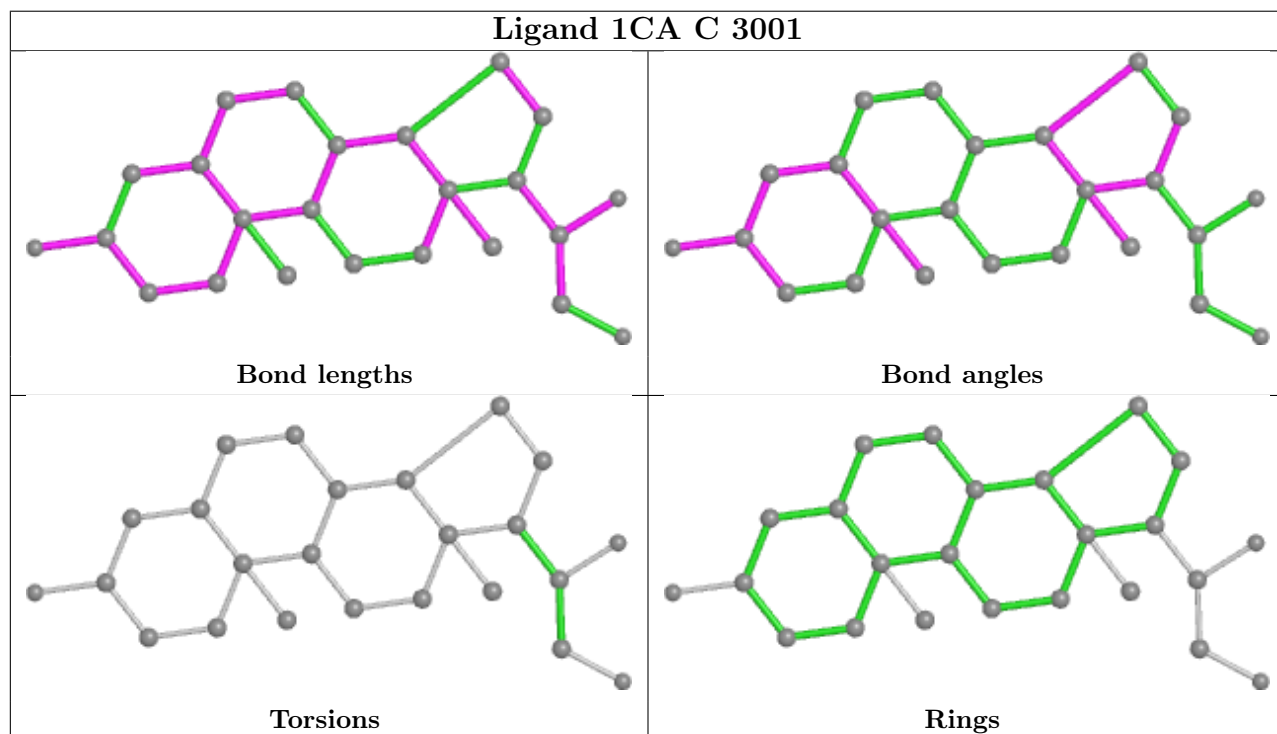
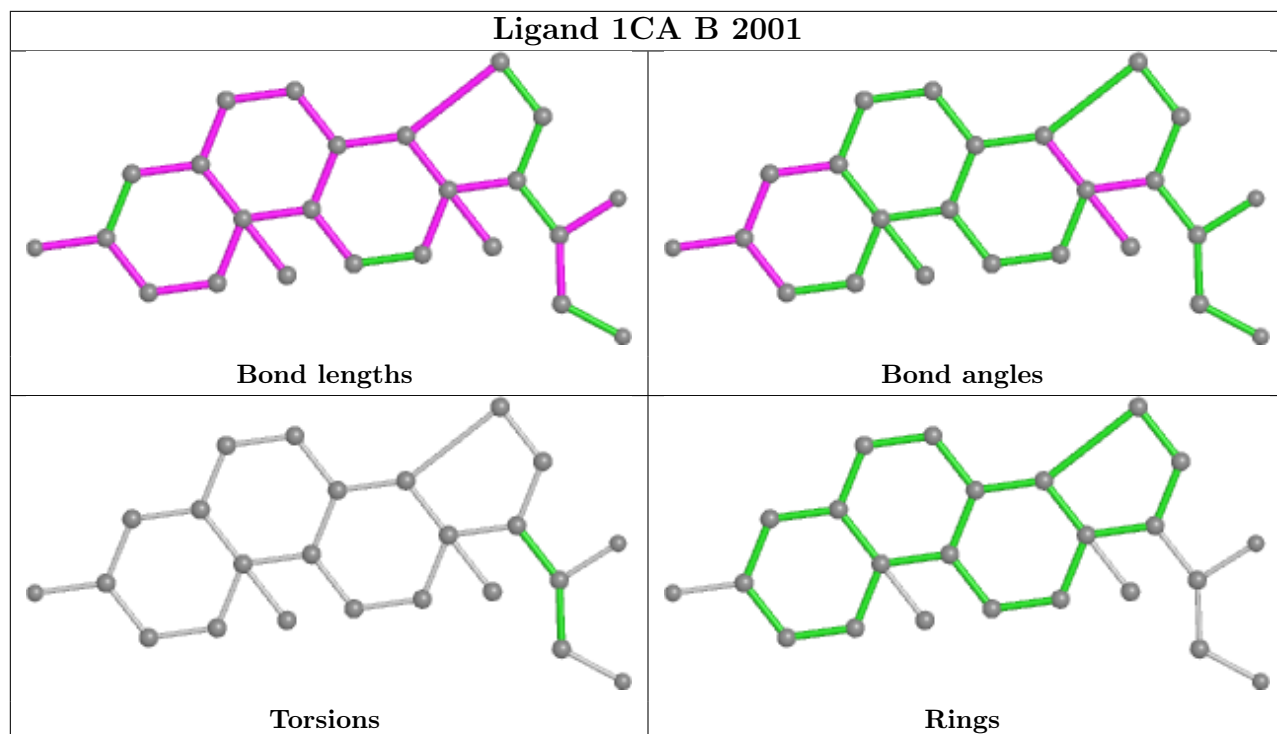
Mol	Chain	Res	Type	Atoms
2	A	1001	1CA	O20-C20-C21-O21
2	A	1001	1CA	C17-C20-C21-O21

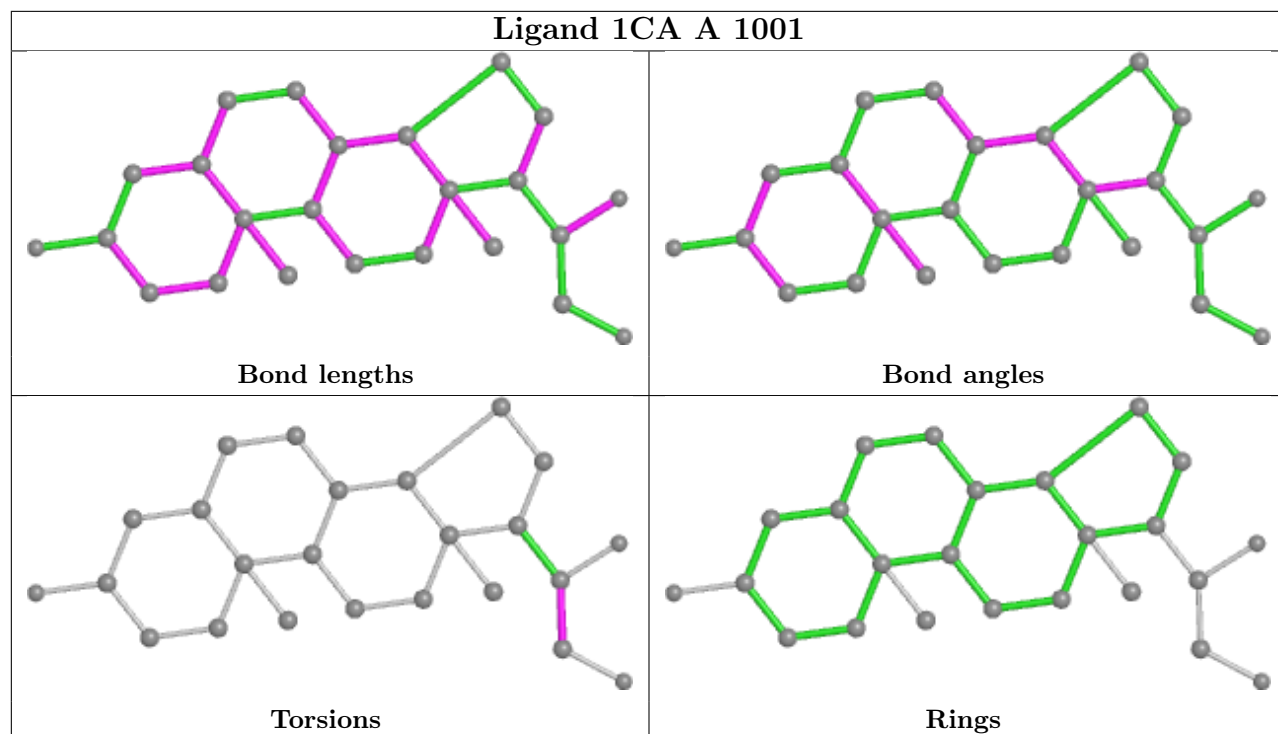
There are no ring outliers.

3 monomers are involved in 9 short contacts:

Mol	Chain	Res	Type	Clashes	Symm-Clashes
2	B	2001	1CA	3	0
2	C	3001	1CA	2	0
2	A	1001	1CA	4	0

The following is a two-dimensional graphical depiction of Mogul quality analysis of bond lengths, bond angles, torsion angles, and ring geometry for all instances of the Ligand of Interest. In addition, ligands with molecular weight > 250 and outliers as shown on the validation Tables will also be included. For torsion angles, if less than 5% of the Mogul distribution of torsion angles is within 10 degrees of the torsion angle in question, then that torsion angle is considered an outlier. Any bond that is central to one or more torsion angles identified as an outlier by Mogul will be highlighted in the graph. For rings, the root-mean-square deviation (RMSD) between the ring in question and similar rings identified by Mogul is calculated over all ring torsion angles. If the average RMSD is greater than 60 degrees and the minimal RMSD between the ring in question and any Mogul-identified rings is also greater than 60 degrees, then that ring is considered an outlier. The outliers are highlighted in purple. The color gray indicates Mogul did not find sufficient equivalents in the CSD to analyse the geometry.





## 5.7 Other polymers [i](#)

There are no such residues in this entry.

## 5.8 Polymer linkage issues [i](#)

There are no chain breaks in this entry.

## 6 Fit of model and data [i](#)

### 6.1 Protein, DNA and RNA chains [i](#)

In the following table, the column labelled ‘#RSRZ > 2’ contains the number (and percentage) of RSRZ outliers, followed by percent RSRZ outliers for the chain as percentile scores relative to all X-ray entries and entries of similar resolution. The OWAB column contains the minimum, median, 95<sup>th</sup> percentile and maximum values of the occupancy-weighted average B-factor per residue. The column labelled ‘Q < 0.9’ lists the number of (and percentage) of residues with an average occupancy less than 0.9.

Mol	Chain	Analysed	<RSRZ>	#RSRZ>2	OWAB(Å <sup>2</sup> )	Q<0.9
1	A	230/256 (89%)	-0.33	0 <a href="#">100</a>   <a href="#">100</a>	28, 44, 65, 72	0
1	B	234/256 (91%)	-0.42	1 (0%) <a href="#">92</a>   <a href="#">96</a>	24, 42, 60, 69	0
1	C	234/256 (91%)	-0.36	0 <a href="#">100</a>   <a href="#">100</a>	25, 43, 61, 67	0
All	All	698/768 (90%)	-0.37	1 (0%) <a href="#">95</a>   <a href="#">98</a>	24, 43, 61, 72	0

All (1) RSRZ outliers are listed below:

Mol	Chain	Res	Type	RSRZ
1	B	952	LEU	2.5

### 6.2 Non-standard residues in protein, DNA, RNA chains [i](#)

There are no non-standard protein/DNA/RNA residues in this entry.

### 6.3 Carbohydrates [i](#)

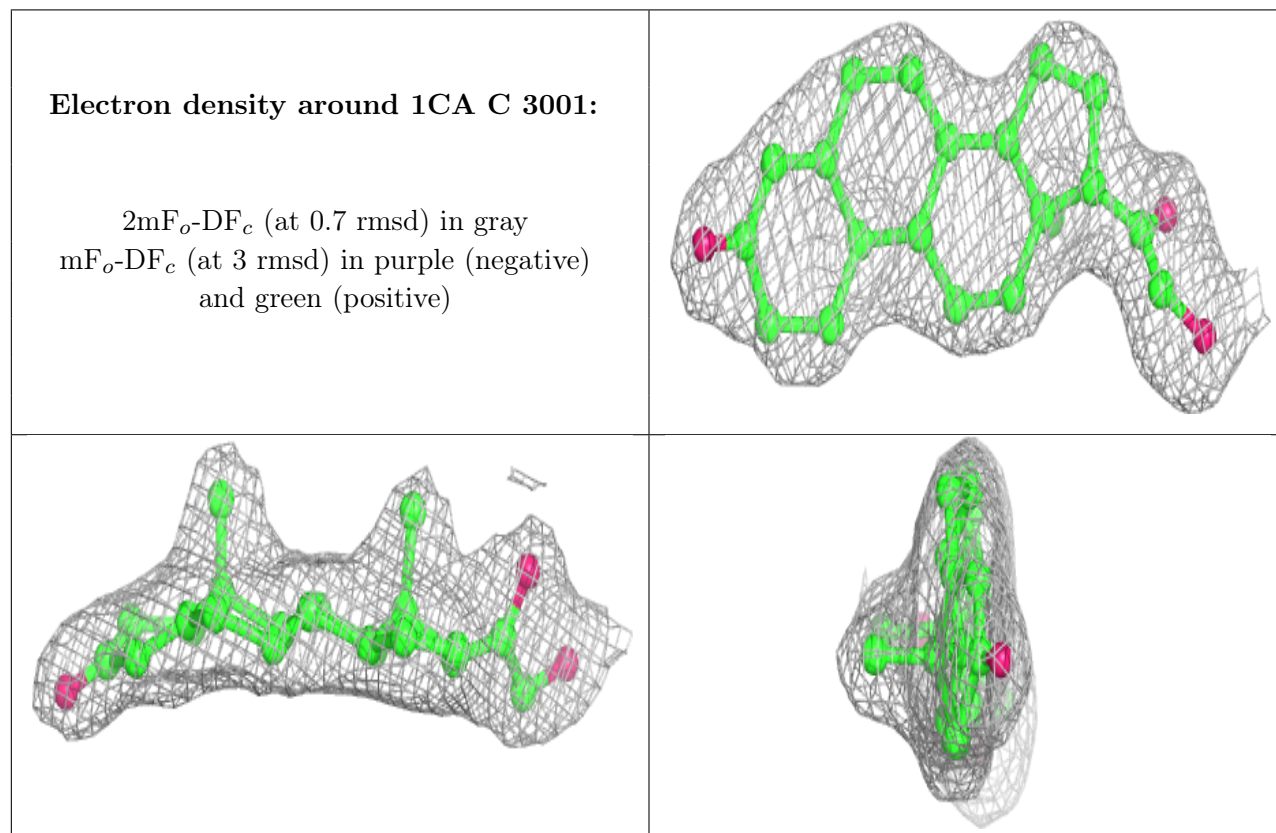
There are no monosaccharides in this entry.

### 6.4 Ligands [i](#)

In the following table, the Atoms column lists the number of modelled atoms in the group and the number defined in the chemical component dictionary. The B-factors column lists the minimum, median, 95<sup>th</sup> percentile and maximum values of B factors of atoms in the group. The column labelled ‘Q < 0.9’ lists the number of atoms with occupancy less than 0.9.

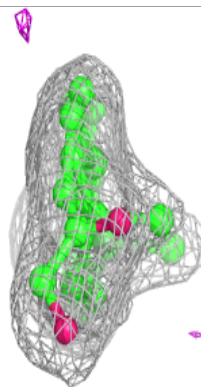
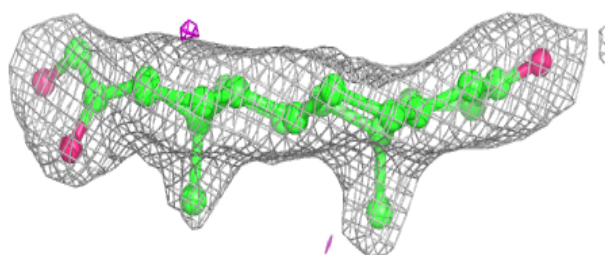
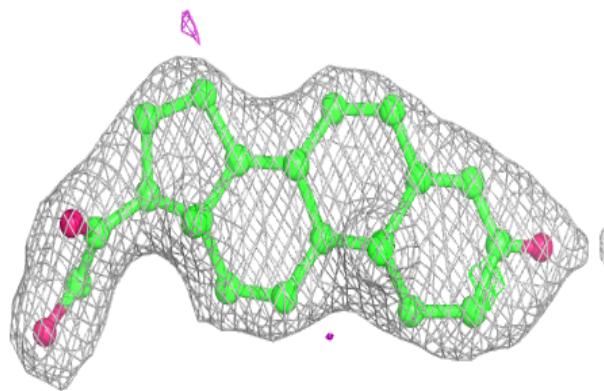
Mol	Type	Chain	Res	Atoms	RSCC	RSR	B-factors(Å <sup>2</sup> )	Q<0.9
2	1CA	C	3001	24/24	0.94	0.12	25,29,32,34	0
2	1CA	B	2001	24/24	0.95	0.12	22,27,32,35	0
2	1CA	A	1001	24/24	0.96	0.13	28,31,35,37	0

The following is a graphical depiction of the model fit to experimental electron density of all instances of the Ligand of Interest. In addition, ligands with molecular weight > 250 and outliers as shown on the geometry validation Tables will also be included. Each fit is shown from different orientation to approximate a three-dimensional view.

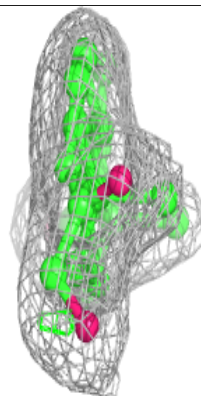
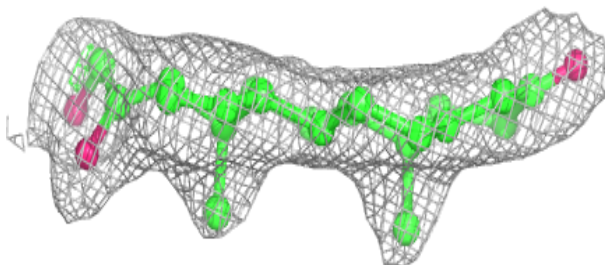
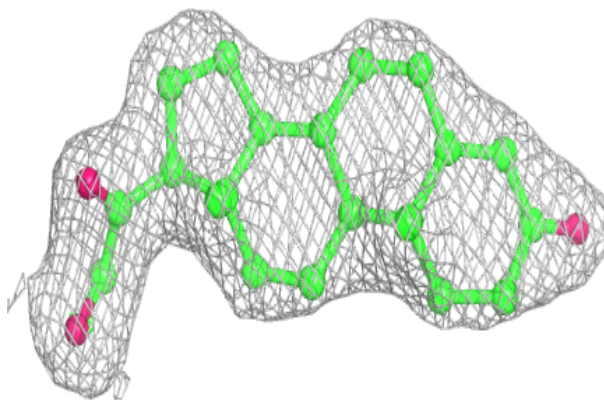


**Electron density around 1CA B 2001:**

$2mF_o-DF_c$  (at 0.7 rmsd) in gray  
 $mF_o-DF_c$  (at 3 rmsd) in purple (negative)  
and green (positive)

**Electron density around 1CA A 1001:**

$2mF_o-DF_c$  (at 0.7 rmsd) in gray  
 $mF_o-DF_c$  (at 3 rmsd) in purple (negative)  
and green (positive)



## 6.5 Other polymers [i](#)

There are no such residues in this entry.