



Full wwPDB X-ray Structure Validation Report ⓘ

Mar 4, 2024 – 06:10 PM EST

PDB ID : 1YUN
Title : Crystal Structure of Nicotinic Acid Mononucleotide Adenylyltransferase from *Pseudomonas aeruginosa*
Authors : Yoon, H.J.; Kim, H.L.; Mikami, B.; Suh, S.W.
Deposited on : 2005-02-14
Resolution : 2.00 Å(reported)

This is a Full wwPDB X-ray Structure Validation Report for a publicly released PDB entry.

We welcome your comments at validation@mail.wwpdb.org

A user guide is available at

<https://www.wwpdb.org/validation/2017/XrayValidationReportHelp>

with specific help available everywhere you see the ⓘ symbol.

The types of validation reports are described at

<http://www.wwpdb.org/validation/2017/FAQs#types>.

The following versions of software and data (see [references ⓘ](#)) were used in the production of this report:

MolProbity : 4.02b-467
Mogul : 1.8.5 (274361), CSD as541be (2020)
Xtriage (Phenix) : 1.13
EDS : 2.36
buster-report : 1.1.7 (2018)
Percentile statistics : 20191225.v01 (using entries in the PDB archive December 25th 2019)
Refmac : 5.8.0158
CCP4 : 7.0.044 (Gargrove)
Ideal geometry (proteins) : Engh & Huber (2001)
Ideal geometry (DNA, RNA) : Parkinson et al. (1996)
Validation Pipeline (wwPDB-VP) : 2.36

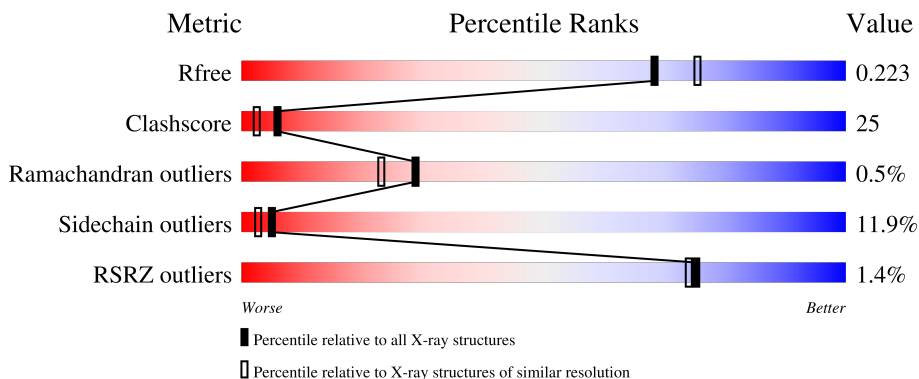
1 Overall quality at a glance

The following experimental techniques were used to determine the structure:

X-RAY DIFFRACTION

The reported resolution of this entry is 2.00 Å.

Percentile scores (ranging between 0-100) for global validation metrics of the entry are shown in the following graphic. The table shows the number of entries on which the scores are based.



Metric	Whole archive (#Entries)	Similar resolution (#Entries, resolution range(Å))
R_{free}	130704	8085 (2.00-2.00)
Clashscore	141614	9178 (2.00-2.00)
Ramachandran outliers	138981	9054 (2.00-2.00)
Sidechain outliers	138945	9053 (2.00-2.00)
RSRZ outliers	127900	7900 (2.00-2.00)

The table below summarises the geometric issues observed across the polymeric chains and their fit to the electron density. The red, orange, yellow and green segments of the lower bar indicate the fraction of residues that contain outliers for ≥ 3 , 2, 1 and 0 types of geometric quality criteria respectively. A grey segment represents the fraction of residues that are not modelled. The numeric value for each fraction is indicated below the corresponding segment, with a dot representing fractions $\leq 5\%$. The upper red bar (where present) indicates the fraction of residues that have poor fit to the electron density. The numeric value is given above the bar.

Mol	Chain	Length	Quality of chain
1	A	242	 2% 48% 32% 7% 13%
1	B	242	 % 45% 36% 5% 13%

2 Entry composition i

There are 4 unique types of molecules in this entry. The entry contains 3668 atoms, of which 0 are hydrogens and 0 are deuteriums.

In the tables below, the ZeroOcc column contains the number of atoms modelled with zero occupancy, the AltConf column contains the number of residues with at least one atom in alternate conformation and the Trace column contains the number of residues modelled with at most 2 atoms.

- Molecule 1 is a protein called Probable nicotinate-nucleotide adenylyltransferase.

Mol	Chain	Residues	Atoms					ZeroOcc	AltConf	Trace
			Total	C	N	O	S			
1	A	210	1677	1062	312	297	6	0	5	0
1	B	210	1660	1050	307	297	6	0	2	0

There are 56 discrepancies between the modelled and reference sequences:

Chain	Residue	Modelled	Actual	Comment	Reference
A	-19	MET	-	expression tag	UNP Q9HX21
A	-18	GLY	-	expression tag	UNP Q9HX21
A	-17	SER	-	expression tag	UNP Q9HX21
A	-16	SER	-	expression tag	UNP Q9HX21
A	-15	HIS	-	expression tag	UNP Q9HX21
A	-14	HIS	-	expression tag	UNP Q9HX21
A	-13	HIS	-	expression tag	UNP Q9HX21
A	-12	HIS	-	expression tag	UNP Q9HX21
A	-11	HIS	-	expression tag	UNP Q9HX21
A	-10	HIS	-	expression tag	UNP Q9HX21
A	-9	SER	-	expression tag	UNP Q9HX21
A	-8	SER	-	expression tag	UNP Q9HX21
A	-7	GLY	-	expression tag	UNP Q9HX21
A	-6	LEU	-	expression tag	UNP Q9HX21
A	-5	VAL	-	expression tag	UNP Q9HX21
A	-4	PRO	-	expression tag	UNP Q9HX21
A	-3	ARG	-	expression tag	UNP Q9HX21
A	-2	GLY	-	expression tag	UNP Q9HX21
A	-1	SER	-	expression tag	UNP Q9HX21
A	0	HIS	-	expression tag	UNP Q9HX21
A	215	LEU	-	expression tag	UNP Q9HX21
A	216	GLU	-	expression tag	UNP Q9HX21
A	217	HIS	-	expression tag	UNP Q9HX21
A	218	HIS	-	expression tag	UNP Q9HX21
A	219	HIS	-	expression tag	UNP Q9HX21

Continued on next page...

Continued from previous page...

Chain	Residue	Modelled	Actual	Comment	Reference
A	220	HIS	-	expression tag	UNP Q9HX21
A	221	HIS	-	expression tag	UNP Q9HX21
A	222	HIS	-	expression tag	UNP Q9HX21
B	-19	MET	-	expression tag	UNP Q9HX21
B	-18	GLY	-	expression tag	UNP Q9HX21
B	-17	SER	-	expression tag	UNP Q9HX21
B	-16	SER	-	expression tag	UNP Q9HX21
B	-15	HIS	-	expression tag	UNP Q9HX21
B	-14	HIS	-	expression tag	UNP Q9HX21
B	-13	HIS	-	expression tag	UNP Q9HX21
B	-12	HIS	-	expression tag	UNP Q9HX21
B	-11	HIS	-	expression tag	UNP Q9HX21
B	-10	HIS	-	expression tag	UNP Q9HX21
B	-9	SER	-	expression tag	UNP Q9HX21
B	-8	SER	-	expression tag	UNP Q9HX21
B	-7	GLY	-	expression tag	UNP Q9HX21
B	-6	LEU	-	expression tag	UNP Q9HX21
B	-5	VAL	-	expression tag	UNP Q9HX21
B	-4	PRO	-	expression tag	UNP Q9HX21
B	-3	ARG	-	expression tag	UNP Q9HX21
B	-2	GLY	-	expression tag	UNP Q9HX21
B	-1	SER	-	expression tag	UNP Q9HX21
B	0	HIS	-	expression tag	UNP Q9HX21
B	215	LEU	-	expression tag	UNP Q9HX21
B	216	GLU	-	expression tag	UNP Q9HX21
B	217	HIS	-	expression tag	UNP Q9HX21
B	218	HIS	-	expression tag	UNP Q9HX21
B	219	HIS	-	expression tag	UNP Q9HX21
B	220	HIS	-	expression tag	UNP Q9HX21
B	221	HIS	-	expression tag	UNP Q9HX21
B	222	HIS	-	expression tag	UNP Q9HX21

- Molecule 2 is ADENOSINE-5'-TRIPHOSPHATE (three-letter code: ATP) (formula: $C_{10}H_{16}N_5O_{13}P_3$).

4 Data and refinement statistics i

Property	Value	Source
Space group	P 2 2 21	Depositor
Cell constants a, b, c, α , β , γ	65.19Å 65.20Å 110.12Å 90.00° 90.00° 90.00°	Depositor
Resolution (Å)	15.00 – 2.00 46.10 – 1.88	Depositor EDS
% Data completeness (in resolution range)	95.0 (15.00-2.00) 97.2 (46.10-1.88)	Depositor EDS
R_{merge}	0.06	Depositor
R_{sym}	(Not available)	Depositor
$\langle I/\sigma(I) \rangle$ ¹	3.88 (at 1.88Å)	Xtrriage
Refinement program	SHELXL-97, SHELXL	Depositor
R, R_{free}	0.172 , 0.243 0.167 , 0.223	Depositor DCC
R_{free} test set	2178 reflections (5.60%)	wwPDB-VP
Wilson B-factor (Å ²)	22.2	Xtrriage
Anisotropy	0.094	Xtrriage
Bulk solvent k_{sol} (e/Å ³), B_{sol} (Å ²)	0.35 , 56.6	EDS
L-test for twinning ²	$\langle L \rangle = 0.49$, $\langle L^2 \rangle = 0.33$	Xtrriage
Estimated twinning fraction	0.479 for k,h,-l	Xtrriage
F_o, F_c correlation	0.96	EDS
Total number of atoms	3668	wwPDB-VP
Average B, all atoms (Å ²)	29.0	wwPDB-VP

Xtrriage's analysis on translational NCS is as follows: *The largest off-origin peak in the Patterson function is 6.87% of the height of the origin peak. No significant pseudotranslation is detected.*

¹Intensities estimated from amplitudes.

²Theoretical values of $\langle |L| \rangle$, $\langle L^2 \rangle$ for acentric reflections are 0.5, 0.333 respectively for untwinned datasets, and 0.375, 0.2 for perfectly twinned datasets.

5 Model quality [i](#)

5.1 Standard geometry [i](#)

Bond lengths and bond angles in the following residue types are not validated in this section: ATP, MG

The Z score for a bond length (or angle) is the number of standard deviations the observed value is removed from the expected value. A bond length (or angle) with $|Z| > 5$ is considered an outlier worth inspection. RMSZ is the root-mean-square of all Z scores of the bond lengths (or angles).

Mol	Chain	Bond lengths		Bond angles	
		RMSZ	# Z >5	RMSZ	# Z >5
1	A	0.34	0/1737	1.10	5/2362 (0.2%)
1	B	0.36	0/1709	1.16	10/2327 (0.4%)
All	All	0.35	0/3446	1.13	15/4689 (0.3%)

There are no bond length outliers.

All (15) bond angle outliers are listed below:

Mol	Chain	Res	Type	Atoms	Z	Observed(°)	Ideal(°)
1	B	211	ARG	NE-CZ-NH1	8.73	124.67	120.30
1	B	211	ARG	CD-NE-CZ	8.70	135.78	123.60
1	B	134	ARG	CD-NE-CZ	8.27	135.18	123.60
1	B	134	ARG	NE-CZ-NH1	8.08	124.34	120.30
1	A	56	ARG	NE-CZ-NH1	7.60	124.10	120.30
1	A	119	ARG	CD-NE-CZ	5.95	131.93	123.60
1	A	210	TYR	C-N-CA	5.95	136.57	121.70
1	B	21	ARG	NE-CZ-NH1	-5.88	117.36	120.30
1	B	210	TYR	C-N-CA	5.81	136.22	121.70
1	B	69[A]	ARG	CD-NE-CZ	5.80	131.73	123.60
1	B	69[B]	ARG	CD-NE-CZ	5.80	131.73	123.60
1	B	134	ARG	NE-CZ-NH2	-5.70	117.45	120.30
1	B	198	ASP	CB-CG-OD1	5.18	122.97	118.30
1	A	56	ARG	CD-NE-CZ	5.12	130.76	123.60
1	A	193	ARG	NE-CZ-NH1	5.08	122.84	120.30

There are no chirality outliers.

There are no planarity outliers.

5.2 Too-close contacts [i](#)

In the following table, the Non-H and H(model) columns list the number of non-hydrogen atoms and hydrogen atoms in the chain respectively. The H(added) column lists the number of hydrogen atoms added and optimized by MolProbity. The Clashes column lists the number of clashes within the asymmetric unit, whereas Symm-Clashes lists symmetry-related clashes.

Mol	Chain	Non-H	H(model)	H(added)	Clashes	Symm-Clashes
1	A	1677	0	1681	91	0
1	B	1660	0	1650	81	0
2	A	43	0	0	1	0
2	B	31	0	12	6	0
3	B	1	0	0	0	0
4	A	129	0	0	6	0
4	B	127	0	0	4	0
All	All	3668	0	3343	169	0

The all-atom clashscore is defined as the number of clashes found per 1000 atoms (including hydrogen atoms). The all-atom clashscore for this structure is 25.

All (169) close contacts within the same asymmetric unit are listed below, sorted by their clash magnitude.

Atom-1	Atom-2	Interatomic distance (Å)	Clash overlap (Å)
1:B:7:LEU:HD22	1:B:38:LEU:HD22	1.42	1.01
1:B:105:LEU:HD11	1:B:132:LEU:HD12	1.54	0.90
1:A:81:LYS:HE3	1:A:82:PRO:HD2	1.59	0.84
1:A:128:HIS:HD2	1:A:166:GLN:H	1.30	0.79
1:A:178:SER:O	1:A:182:ILE:HD13	1.84	0.77
1:A:108:TRP:HH2	1:A:141:PRO:HG3	1.51	0.75
1:B:211:ARG:HG3	1:B:211:ARG:HH11	1.52	0.74
1:B:26:MET:SD	1:B:105:LEU:HD22	2.30	0.71
1:B:86:ILE:O	1:B:90:GLU:HG3	1.91	0.70
1:B:51:VAL:HG22	1:B:209:LEU:HD22	1.74	0.70
1:A:43:PRO:HD2	1:A:46[A]:ARG:HD3	1.75	0.69
1:A:93:ARG:HA	1:A:96:LEU:HG	1.73	0.69
1:A:134:ARG:HD3	1:A:174:PRO:HD2	1.75	0.69
1:B:79:ARG:NH2	1:B:81:LYS:HB2	2.09	0.68
1:B:11:THR:HG23	4:B:352:HOH:O	1.93	0.68
1:B:11:THR:HG22	2:B:1220:ATP:O1A	1.95	0.67
1:A:43:PRO:HD2	1:A:46[A]:ARG:HH11	1.58	0.67
1:A:82:PRO:HD3	4:A:459:HOH:O	1.95	0.67
1:B:80:ASP:O	1:B:81:LYS:HD3	1.97	0.64
1:A:161:LYS:H	1:A:166:GLN:HE22	1.44	0.63

Continued on next page...

Continued from previous page...

Atom-1	Atom-2	Interatomic distance (Å)	Clash overlap (Å)
1:B:67:VAL:HG12	1:B:68:GLU:HG2	1.80	0.63
1:A:124:LEU:HD21	1:A:129:ILE:HG13	1.79	0.63
1:B:115:PRO:HA	1:B:120:TRP:CD2	2.33	0.63
1:A:128:HIS:CD2	1:A:166:GLN:H	2.16	0.62
1:B:68:GLU:O	1:B:70:LEU:HG	2.00	0.62
1:A:39:PRO:HB2	1:A:77:LEU:HD11	1.82	0.61
1:A:101:GLN:HA	1:A:163:PRO:HA	1.82	0.61
1:A:122:ALA:O	1:A:125:ASP:HB2	2.01	0.61
1:B:132:LEU:HD21	1:B:172:GLN:HB2	1.82	0.61
1:A:59:MET:HB2	4:A:307:HOH:O	2.00	0.61
1:B:156:ASP:OD2	1:B:158:GLN:HG2	2.02	0.60
1:B:79:ARG:HD3	1:B:83:SER:OG	2.02	0.60
1:A:134:ARG:NH1	1:A:174:PRO:HG2	2.16	0.60
1:A:108:TRP:HD1	1:A:137:ALA:HB1	1.68	0.59
1:A:134:ARG:CZ	1:A:174:PRO:HG2	2.33	0.59
1:A:161:LYS:HG2	1:B:208:HIS:HB3	1.84	0.59
1:A:52:SER:H	1:A:55:GLN:HE21	1.48	0.59
1:B:64:VAL:HG21	1:B:72:VAL:HG23	1.86	0.58
1:A:69:ARG:O	1:A:70:LEU:HD12	2.04	0.57
1:B:128:HIS:HD2	1:B:166:GLN:H	1.52	0.57
1:A:134:ARG:HD3	1:A:174:PRO:CD	2.34	0.57
1:B:52:SER:H	1:B:55:GLN:HE21	1.52	0.57
1:A:43:PRO:HB2	1:A:46[A]:ARG:HG3	1.87	0.56
1:B:111:PHE:O	1:B:114:LEU:HB2	2.05	0.56
1:B:24:VAL:HG13	1:B:69[A]:ARG:HH22	1.71	0.56
1:B:76:GLU:HB2	4:B:308:HOH:O	2.07	0.55
1:B:152:ARG:HD2	1:B:165:GLY:O	2.07	0.55
1:B:133:GLN:HE22	1:B:139:SER:CB	2.19	0.55
1:A:134:ARG:HH11	1:A:134:ARG:HB3	1.72	0.54
1:B:79:ARG:HH22	1:B:81:LYS:HB2	1.72	0.54
1:B:161:LYS:H	1:B:166:GLN:HE22	1.54	0.54
1:A:108:TRP:CH2	1:A:141:PRO:HG3	2.38	0.54
1:A:124:LEU:CD2	1:A:129:ILE:HG13	2.37	0.54
1:B:10:GLY:HA3	2:B:1220:ATP:H5'2	1.89	0.54
1:A:84:TYR:HB2	1:A:87:ASP:OD2	2.08	0.54
1:B:32:LEU:O	1:B:69[B]:ARG:HD2	2.07	0.54
1:A:111:PHE:CZ	1:A:145:LEU:HD13	2.43	0.53
1:A:3[B]:LYS:NZ	1:A:5:ILE:HD11	2.24	0.53
1:A:134:ARG:HH11	1:A:134:ARG:CB	2.22	0.53
1:B:38:LEU:CD1	1:B:73:ASP:HB3	2.39	0.53
1:A:181:GLN:HG2	1:A:182:ILE:HD12	1.91	0.53

Continued on next page...

Continued from previous page...

Atom-1	Atom-2	Interatomic distance (Å)	Clash overlap (Å)
1:A:43:PRO:HG2	1:A:46[A]:ARG:HD3	1.90	0.52
1:A:82:PRO:HB3	4:A:528:HOH:O	2.09	0.52
1:B:17:ILE:HB	1:B:195:LEU:O	2.09	0.52
1:A:58:ALA:O	1:A:62[A]:ARG:HG2	2.09	0.52
1:A:4:ARG:HH11	1:A:101:GLN:HE22	1.57	0.52
1:A:43:PRO:HD2	1:A:46[A]:ARG:NH1	2.24	0.52
1:B:119:ARG:O	1:B:122:ALA:HB3	2.10	0.52
1:A:43:PRO:CD	1:A:46[A]:ARG:HD3	2.40	0.52
1:B:60:VAL:HG12	1:B:72:VAL:HG22	1.93	0.51
1:B:8:PHE:CE1	2:B:1220:ATP:H4'	2.46	0.51
1:A:61:GLU:HG2	1:A:72:VAL:HG11	1.93	0.51
1:B:128:HIS:HE1	1:B:162:GLY:O	1.94	0.50
1:A:151:ALA:O	1:B:207:HIS:HE1	1.94	0.50
1:A:57:LEU:HB2	1:A:77:LEU:CD1	2.42	0.50
1:B:30:PHE:CZ	1:B:157:PRO:HG3	2.46	0.49
1:B:173:THR:HG22	1:B:173:THR:O	2.12	0.49
1:B:58:ALA:O	1:B:62:ARG:HG2	2.13	0.49
1:B:134:ARG:HA	1:B:172:GLN:O	2.13	0.49
1:A:133:GLN:OE1	1:A:133:GLN:HA	2.12	0.49
1:A:52:SER:H	1:A:55:GLN:NE2	2.11	0.48
1:B:179:ALA:O	1:B:183:ARG:HG3	2.13	0.48
1:A:11:THR:HG21	1:A:42:ARG:NH1	2.29	0.48
1:A:133:GLN:HE22	1:A:139:SER:CB	2.25	0.48
1:B:108:TRP:O	1:B:111:PHE:HB3	2.13	0.48
1:A:43:PRO:CG	1:A:46[A]:ARG:HD3	2.44	0.48
1:B:9:GLY:HA2	1:B:38:LEU:HB3	1.95	0.48
1:A:43:PRO:CD	1:A:46[A]:ARG:HH11	2.25	0.47
1:A:93:ARG:HA	1:A:93:ARG:HD3	1.75	0.47
1:A:172:GLN:O	1:A:174:PRO:HD3	2.13	0.47
1:A:23:ALA:HB1	1:A:70:LEU:HD21	1.96	0.47
1:B:19:HIS:CD2	2:B:1220:ATP:H5'1	2.49	0.47
1:B:108:TRP:CZ2	1:B:139:SER:HA	2.49	0.47
1:B:134:ARG:HH11	1:B:174:PRO:HG3	1.80	0.47
1:B:73:ASP:CG	1:B:75:ARG:HE	2.18	0.47
1:B:84:TYR:HB2	1:B:87:ASP:OD2	2.15	0.47
1:B:90:GLU:HG2	1:B:126:HIS:NE2	2.30	0.47
1:B:146:ARG:HE	1:B:146:ARG:HB2	1.47	0.46
1:A:108:TRP:CE2	1:A:139:SER:HA	2.51	0.46
1:A:126:HIS:HA	4:A:354:HOH:O	2.15	0.46
1:A:68:GLU:HG2	1:A:68:GLU:O	2.16	0.46
1:B:11:THR:O	1:B:56:ARG:HD2	2.16	0.45

Continued on next page...

Continued from previous page...

Atom-1	Atom-2	Interatomic distance (Å)	Clash overlap (Å)
1:B:17:ILE:HD12	1:B:17:ILE:HA	1.74	0.45
1:B:134:ARG:NH1	1:B:174:PRO:HG3	2.31	0.45
1:A:57:LEU:HB2	1:A:77:LEU:HD13	1.97	0.45
1:A:169:PHE:HB2	4:A:385:HOH:O	2.17	0.45
1:B:120:TRP:CZ3	1:B:148:LEU:HD22	2.50	0.45
1:A:4:ARG:O	1:A:33:ASP:N	2.50	0.45
1:B:143:GLU:OE1	1:B:146:ARG:NH2	2.50	0.45
1:B:19:HIS:HD2	2:B:1220:ATP:O4'	2.00	0.45
1:B:134:ARG:HB2	1:B:135:PRO:HD2	1.98	0.45
1:A:68:GLU:O	1:A:69:ARG:HB2	2.16	0.45
1:A:133:GLN:NE2	1:A:139:SER:OG	2.49	0.45
1:B:18:GLY:HA3	2:B:1220:ATP:N6	2.31	0.45
1:B:131:VAL:HB	1:B:169:PHE:CD2	2.51	0.45
1:A:198:ASP:O	1:A:202:ASN:ND2	2.50	0.45
1:B:68:GLU:O	1:B:69[A]:ARG:NH1	2.50	0.45
1:A:108:TRP:CZ2	1:A:139:SER:HA	2.52	0.45
1:A:134:ARG:HG3	1:A:136:ASP:H	1.81	0.45
1:A:96:LEU:HD23	1:A:96:LEU:N	2.32	0.44
1:A:115:PRO:HA	1:A:120:TRP:CD2	2.52	0.44
1:A:80:ASP:OD2	1:A:80:ASP:N	2.50	0.44
1:A:154:VAL:O	1:A:154:VAL:HG23	2.18	0.44
1:A:166:GLN:NE2	4:A:534:HOH:O	2.50	0.44
1:B:55:GLN:NE2	4:B:353:HOH:O	2.50	0.44
1:B:133:GLN:HE22	1:B:139:SER:HB2	1.82	0.44
1:A:23:ALA:HB1	1:A:35:LEU:HD12	1.98	0.44
1:A:161:LYS:HG2	1:B:208:HIS:CB	2.46	0.44
1:B:154:VAL:HG21	1:B:160:LEU:HD23	1.99	0.44
1:B:186:LEU:HD13	1:B:210:TYR:HB2	1.99	0.44
1:A:138:ASP:O	1:A:140:GLU:N	2.50	0.44
1:A:153:SER:HA	1:A:167:ILE:O	2.18	0.43
1:B:124:LEU:HD11	1:B:167:ILE:CG1	2.49	0.43
1:A:21:ARG:HA	1:A:21:ARG:HD2	1.81	0.43
1:A:81:LYS:CE	1:A:82:PRO:HD2	2.38	0.43
1:A:95:GLU:C	1:A:96:LEU:HD23	2.39	0.43
1:B:21:ARG:NH2	4:B:359:HOH:O	2.50	0.43
1:B:209:LEU:O	1:B:210:TYR:HB2	2.19	0.43
1:B:128:HIS:CD2	1:B:166:GLN:H	2.33	0.43
1:B:120:TRP:HZ3	1:B:148:LEU:HD22	1.83	0.42
1:A:132:LEU:HD11	1:A:172:GLN:HB2	2.02	0.42
1:A:143:GLU:HG3	1:A:143:GLU:O	2.19	0.42
1:B:38:LEU:HD13	1:B:73:ASP:HB3	2.01	0.42

Continued on next page...

Continued from previous page...

Atom-1	Atom-2	Interatomic distance (Å)	Clash overlap (Å)
1:B:90:GLU:OE1	1:B:119:ARG:NH2	2.51	0.42
1:B:96:LEU:HD11	1:B:102:LEU:HD13	2.01	0.42
1:A:40:ASN:HA	1:A:76:GLU:OE1	2.19	0.42
1:B:57:LEU:HD12	1:B:72:VAL:HG11	2.02	0.42
1:B:68:GLU:HG3	1:B:69[A]:ARG:NH1	2.35	0.42
1:B:193:ARG:HG2	1:B:194:PHE:CD1	2.54	0.42
1:A:128:HIS:HE1	1:A:162:GLY:O	2.03	0.41
1:A:78:GLN:HE21	1:A:78:GLN:HB3	1.46	0.41
1:A:111:PHE:CZ	1:A:149:LEU:HD21	2.55	0.41
1:A:39:PRO:HB2	1:A:77:LEU:CD1	2.49	0.41
1:A:119:ARG:HE	1:A:119:ARG:HB3	1.54	0.41
1:A:36:ARG:HD3	1:A:73:ASP:HB2	2.03	0.41
1:B:46:ARG:HD2	1:B:46:ARG:HA	1.82	0.41
1:B:13:ASP:O	1:B:183:ARG:HD3	2.21	0.41
1:A:180:THR:N	2:A:223[A]:ATP:O1G	2.49	0.40
1:A:193:ARG:O	1:A:194:PHE:HB2	2.21	0.40
1:A:211:ARG:CZ	1:A:211:ARG:HB2	2.50	0.40
1:B:209:LEU:HD23	1:B:209:LEU:HA	1.85	0.40
1:A:134:ARG:HD2	1:A:136:ASP:OD2	2.21	0.40
1:B:161:LYS:H	1:B:166:GLN:NE2	2.17	0.40
1:A:15:VAL:HA	1:A:19:HIS:CE1	2.56	0.40
1:A:23:ALA:HB1	1:A:35:LEU:CD1	2.51	0.40
1:A:37:LEU:CD2	1:A:60:VAL:HG13	2.52	0.40
1:B:34:GLU:OE2	1:B:36:ARG:NE	2.48	0.40

There are no symmetry-related clashes.

5.3 Torsion angles [i](#)

5.3.1 Protein backbone [i](#)

In the following table, the Percentiles column shows the percent Ramachandran outliers of the chain as a percentile score with respect to all X-ray entries followed by that with respect to entries of similar resolution.

The Analysed column shows the number of residues for which the backbone conformation was analysed, and the total number of residues.

Mol	Chain	Analysed	Favoured	Allowed	Outliers	Percentiles
1	A	213/242 (88%)	201 (94%)	10 (5%)	2 (1%)	17 11

Continued on next page...

Continued from previous page...

Mol	Chain	Analysed	Favoured	Allowed	Outliers	Percentiles	
1	B	210/242 (87%)	198 (94%)	12 (6%)	0	100	100
All	All	423/484 (87%)	399 (94%)	22 (5%)	2 (0%)	29	23

All (2) Ramachandran outliers are listed below:

Mol	Chain	Res	Type
1	A	139	SER
1	A	135	PRO

5.3.2 Protein sidechains [i](#)

In the following table, the Percentiles column shows the percent sidechain outliers of the chain as a percentile score with respect to all X-ray entries followed by that with respect to entries of similar resolution.

The Analysed column shows the number of residues for which the sidechain conformation was analysed, and the total number of residues.

Mol	Chain	Analysed	Rotameric	Outliers	Percentiles	
1	A	177/200 (88%)	156 (88%)	21 (12%)	5	3
1	B	174/200 (87%)	150 (86%)	24 (14%)	3	2
All	All	351/400 (88%)	306 (87%)	45 (13%)	5	2

All (45) residues with a non-rotameric sidechain are listed below:

Mol	Chain	Res	Type
1	A	3[A]	LYS
1	A	3[B]	LYS
1	A	17[A]	ILE
1	A	17[B]	ILE
1	A	21	ARG
1	A	35	LEU
1	A	46[A]	ARG
1	A	46[B]	ARG
1	A	57	LEU
1	A	79	ARG
1	A	80	ASP
1	A	81	LYS
1	A	83	SER
1	A	89	LEU

Continued on next page...

Continued from previous page...

Mol	Chain	Res	Type
1	A	93	ARG
1	A	114	LEU
1	A	132	LEU
1	A	134	ARG
1	A	166	GLN
1	A	178	SER
1	A	211	ARG
1	B	3	LYS
1	B	11	THR
1	B	14	PRO
1	B	17	ILE
1	B	29	GLN
1	B	36	ARG
1	B	48	THR
1	B	69[A]	ARG
1	B	69[B]	ARG
1	B	78	GLN
1	B	79	ARG
1	B	83	SER
1	B	134	ARG
1	B	136	ASP
1	B	138	ASP
1	B	140	GLU
1	B	143	GLU
1	B	146	ARG
1	B	158	GLN
1	B	172	GLN
1	B	173	THR
1	B	181	GLN
1	B	201	LEU
1	B	211	ARG

Sometimes sidechains can be flipped to improve hydrogen bonding and reduce clashes. All (17) such sidechains are listed below:

Mol	Chain	Res	Type
1	A	40	ASN
1	A	55	GLN
1	A	78	GLN
1	A	101	GLN
1	A	128	HIS
1	A	133	GLN
1	A	166	GLN

Continued on next page...

Continued from previous page...

Mol	Chain	Res	Type
1	A	181	GLN
1	A	202	ASN
1	A	207	HIS
1	B	55	GLN
1	B	78	GLN
1	B	101	GLN
1	B	128	HIS
1	B	133	GLN
1	B	166	GLN
1	B	207	HIS

5.3.3 RNA [i](#)

There are no RNA molecules in this entry.

5.4 Non-standard residues in protein, DNA, RNA chains [i](#)

There are no non-standard protein/DNA/RNA residues in this entry.

5.5 Carbohydrates [i](#)

There are no monosaccharides in this entry.

5.6 Ligand geometry [i](#)

Of 4 ligands modelled in this entry, 1 is monoatomic - leaving 3 for Mogul analysis.

In the following table, the Counts columns list the number of bonds (or angles) for which Mogul statistics could be retrieved, the number of bonds (or angles) that are observed in the model and the number of bonds (or angles) that are defined in the Chemical Component Dictionary. The Link column lists molecule types, if any, to which the group is linked. The Z score for a bond length (or angle) is the number of standard deviations the observed value is removed from the expected value. A bond length (or angle) with $|Z| > 2$ is considered an outlier worth inspection. RMSZ is the root-mean-square of all Z scores of the bond lengths (or angles).

Mol	Type	Chain	Res	Link	Bond lengths			Bond angles		
					Counts	RMSZ	# Z > 2	Counts	RMSZ	# Z > 2
2	ATP	A	223[B]	-	26,33,33	1.17	3 (11%)	31,52,52	2.30	6 (19%)
2	ATP	A	223[A]	-	26,33,33	1.17	3 (11%)	31,52,52	2.34	6 (19%)
2	ATP	B	1220	3	26,33,33	1.07	2 (7%)	31,52,52	1.83	6 (19%)

In the following table, the Chirals column lists the number of chiral outliers, the number of chiral centers analysed, the number of these observed in the model and the number defined in the Chemical Component Dictionary. Similar counts are reported in the Torsion and Rings columns. '-' means no outliers of that kind were identified.

Mol	Type	Chain	Res	Link	Chirals	Torsions	Rings
2	ATP	A	223[B]	-	-	6/18/38/38	0/3/3/3
2	ATP	A	223[A]	-	-	8/18/38/38	0/3/3/3
2	ATP	B	1220	3	-	5/18/38/38	0/3/3/3

All (8) bond length outliers are listed below:

Mol	Chain	Res	Type	Atoms	Z	Observed(Å)	Ideal(Å)
2	B	1220	ATP	C2-N3	3.43	1.37	1.32
2	A	223[A]	ATP	C2-N3	2.97	1.36	1.32
2	A	223[B]	ATP	C2-N3	2.97	1.36	1.32
2	A	223[A]	ATP	C2'-C1'	-2.18	1.50	1.53
2	A	223[B]	ATP	C2'-C1'	-2.18	1.50	1.53
2	A	223[A]	ATP	O4'-C1'	2.06	1.43	1.41
2	A	223[B]	ATP	O4'-C1'	2.06	1.43	1.41
2	B	1220	ATP	O4'-C1'	2.01	1.43	1.41

All (18) bond angle outliers are listed below:

Mol	Chain	Res	Type	Atoms	Z	Observed(°)	Ideal(°)
2	A	223[A]	ATP	C5-C6-N6	6.60	130.38	120.35
2	A	223[B]	ATP	C5-C6-N6	6.60	130.38	120.35
2	A	223[A]	ATP	N3-C2-N1	-6.17	119.03	128.68
2	A	223[B]	ATP	N3-C2-N1	-6.17	119.03	128.68
2	B	1220	ATP	N3-C2-N1	-5.88	119.48	128.68
2	A	223[A]	ATP	C4-C5-N7	-5.19	103.99	109.40
2	A	223[B]	ATP	C4-C5-N7	-5.19	103.99	109.40
2	B	1220	ATP	C4-C5-N7	-4.88	104.31	109.40
2	A	223[A]	ATP	PB-O3B-PG	-3.81	119.76	132.83
2	B	1220	ATP	C5-C6-N6	3.55	125.75	120.35
2	A	223[A]	ATP	N6-C6-N1	-3.37	111.58	118.57
2	A	223[B]	ATP	N6-C6-N1	-3.37	111.58	118.57
2	A	223[B]	ATP	PB-O3B-PG	-2.72	123.50	132.83
2	B	1220	ATP	O2'-C2'-C3'	2.27	119.18	111.82
2	B	1220	ATP	O4'-C1'-C2'	-2.15	103.79	106.93
2	A	223[A]	ATP	O2'-C2'-C3'	2.12	118.68	111.82
2	A	223[B]	ATP	O2'-C2'-C3'	2.12	118.68	111.82
2	B	1220	ATP	O2G-PG-O3B	2.02	111.41	104.64

There are no chirality outliers.

All (19) torsion outliers are listed below:

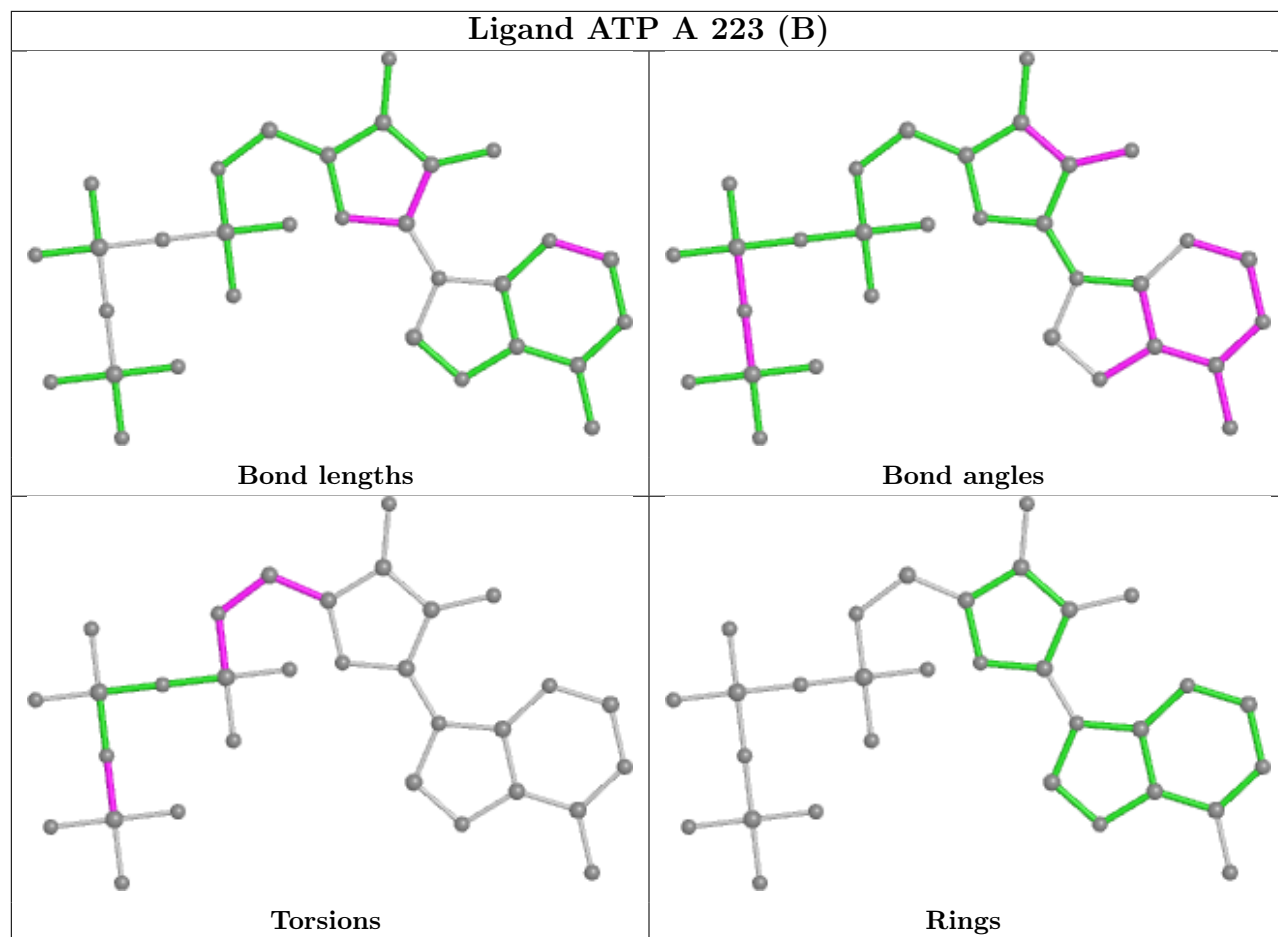
Mol	Chain	Res	Type	Atoms
2	A	223[A]	ATP	C5'-O5'-PA-O1A
2	A	223[A]	ATP	O4'-C4'-C5'-O5'
2	A	223[A]	ATP	C3'-C4'-C5'-O5'
2	A	223[B]	ATP	PB-O3B-PG-O2G
2	A	223[B]	ATP	O4'-C4'-C5'-O5'
2	A	223[B]	ATP	C3'-C4'-C5'-O5'
2	B	1220	ATP	C3'-C4'-C5'-O5'
2	A	223[A]	ATP	C4'-C5'-O5'-PA
2	B	1220	ATP	O4'-C4'-C5'-O5'
2	A	223[A]	ATP	PA-O3A-PB-O1B
2	A	223[B]	ATP	C4'-C5'-O5'-PA
2	B	1220	ATP	PB-O3B-PG-O1G
2	A	223[A]	ATP	C5'-O5'-PA-O3A
2	A	223[A]	ATP	C5'-O5'-PA-O2A
2	B	1220	ATP	PB-O3B-PG-O2G
2	B	1220	ATP	PB-O3B-PG-O3G
2	A	223[B]	ATP	C5'-O5'-PA-O3A
2	A	223[A]	ATP	PB-O3A-PA-O2A
2	A	223[B]	ATP	C5'-O5'-PA-O1A

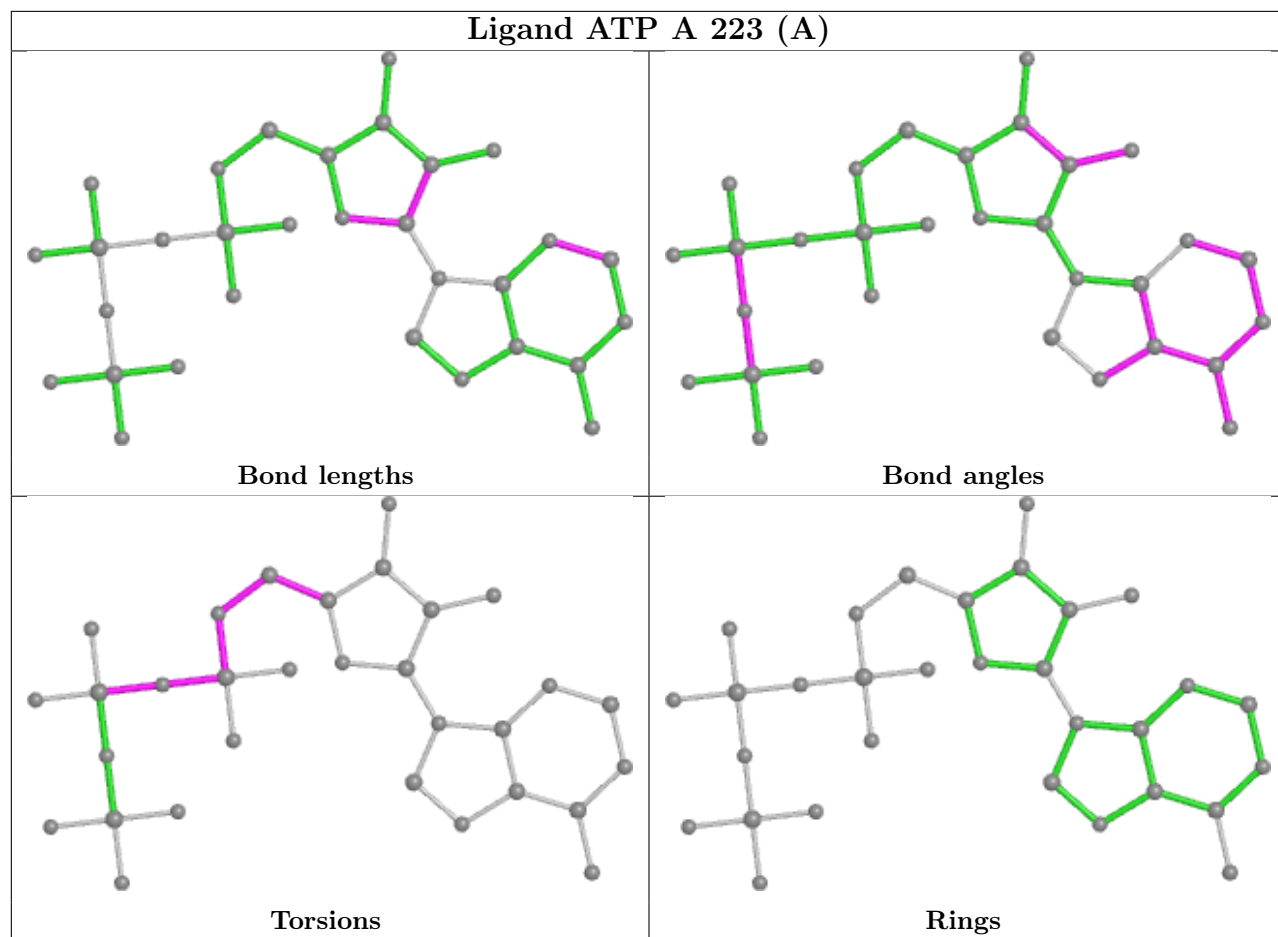
There are no ring outliers.

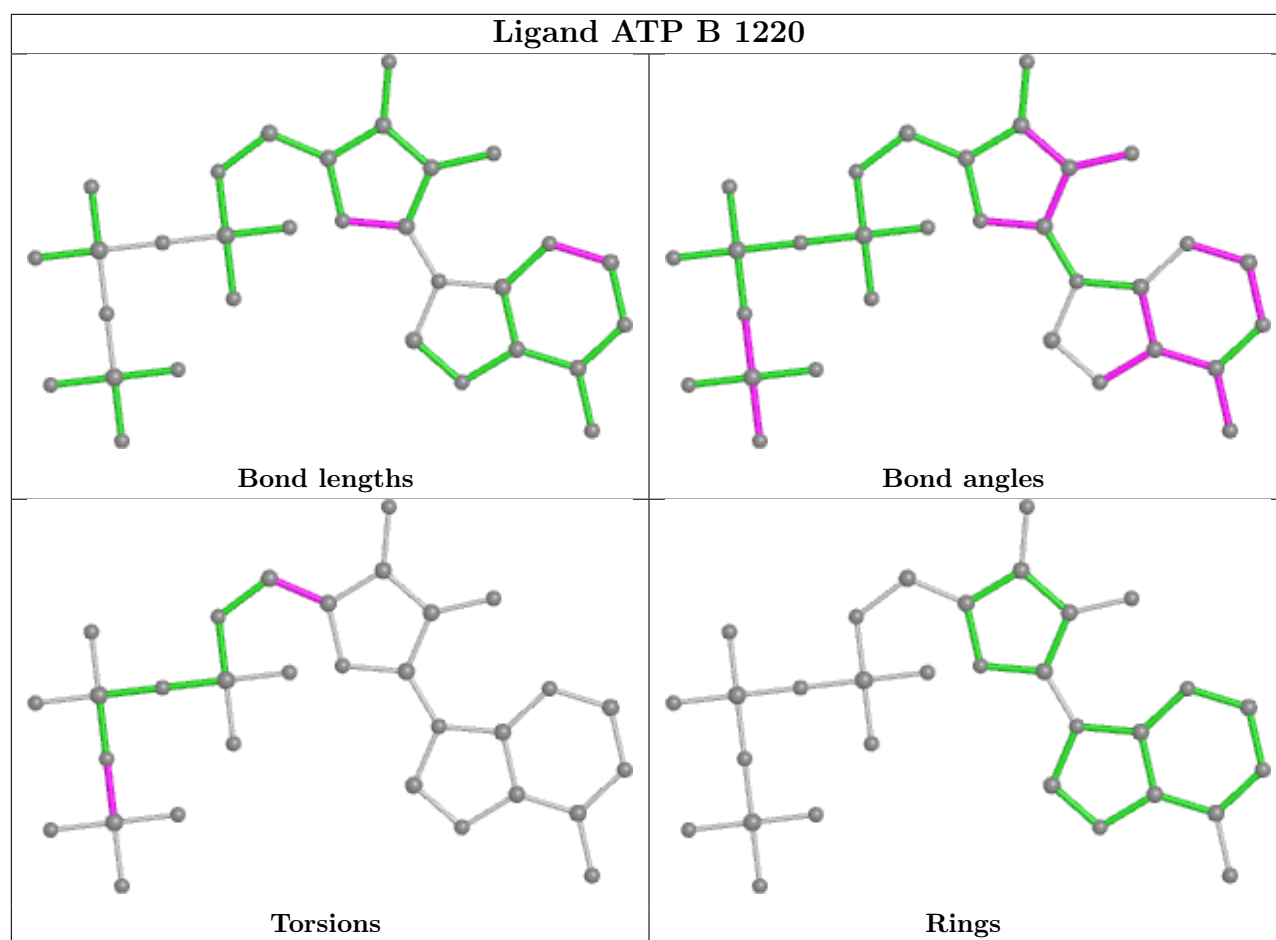
2 monomers are involved in 7 short contacts:

Mol	Chain	Res	Type	Clashes	Symm-Clashes
2	A	223[A]	ATP	1	0
2	B	1220	ATP	6	0

The following is a two-dimensional graphical depiction of Mogul quality analysis of bond lengths, bond angles, torsion angles, and ring geometry for all instances of the Ligand of Interest. In addition, ligands with molecular weight > 250 and outliers as shown on the validation Tables will also be included. For torsion angles, if less than 5% of the Mogul distribution of torsion angles is within 10 degrees of the torsion angle in question, then that torsion angle is considered an outlier. Any bond that is central to one or more torsion angles identified as an outlier by Mogul will be highlighted in the graph. For rings, the root-mean-square deviation (RMSD) between the ring in question and similar rings identified by Mogul is calculated over all ring torsion angles. If the average RMSD is greater than 60 degrees and the minimal RMSD between the ring in question and any Mogul-identified rings is also greater than 60 degrees, then that ring is considered an outlier. The outliers are highlighted in purple. The color gray indicates Mogul did not find sufficient equivalents in the CSD to analyse the geometry.







5.7 Other polymers [i](#)

There are no such residues in this entry.

5.8 Polymer linkage issues [i](#)

There are no chain breaks in this entry.

6 Fit of model and data [i](#)

6.1 Protein, DNA and RNA chains [i](#)

In the following table, the column labelled '#RSRZ > 2' contains the number (and percentage) of RSRZ outliers, followed by percent RSRZ outliers for the chain as percentile scores relative to all X-ray entries and entries of similar resolution. The OWAB column contains the minimum, median, 95th percentile and maximum values of the occupancy-weighted average B-factor per residue. The column labelled 'Q < 0.9' lists the number of (and percentage) of residues with an average occupancy less than 0.9.

Mol	Chain	Analysed	<RSRZ>	#RSRZ>2	OWAB(Å ²)	Q<0.9
1	A	210/242 (86%)	-0.62	4 (1%) 66 65	12, 25, 47, 104	0
1	B	210/242 (86%)	-0.63	2 (0%) 82 81	13, 25, 49, 109	0
All	All	420/484 (86%)	-0.62	6 (1%) 75 74	12, 25, 49, 109	0

All (6) RSRZ outliers are listed below:

Mol	Chain	Res	Type	RSRZ
1	A	136	ASP	5.3
1	B	136	ASP	5.2
1	A	139	SER	2.9
1	A	137	ALA	2.8
1	B	137	ALA	2.5
1	A	138	ASP	2.4

6.2 Non-standard residues in protein, DNA, RNA chains [i](#)

There are no non-standard protein/DNA/RNA residues in this entry.

6.3 Carbohydrates [i](#)

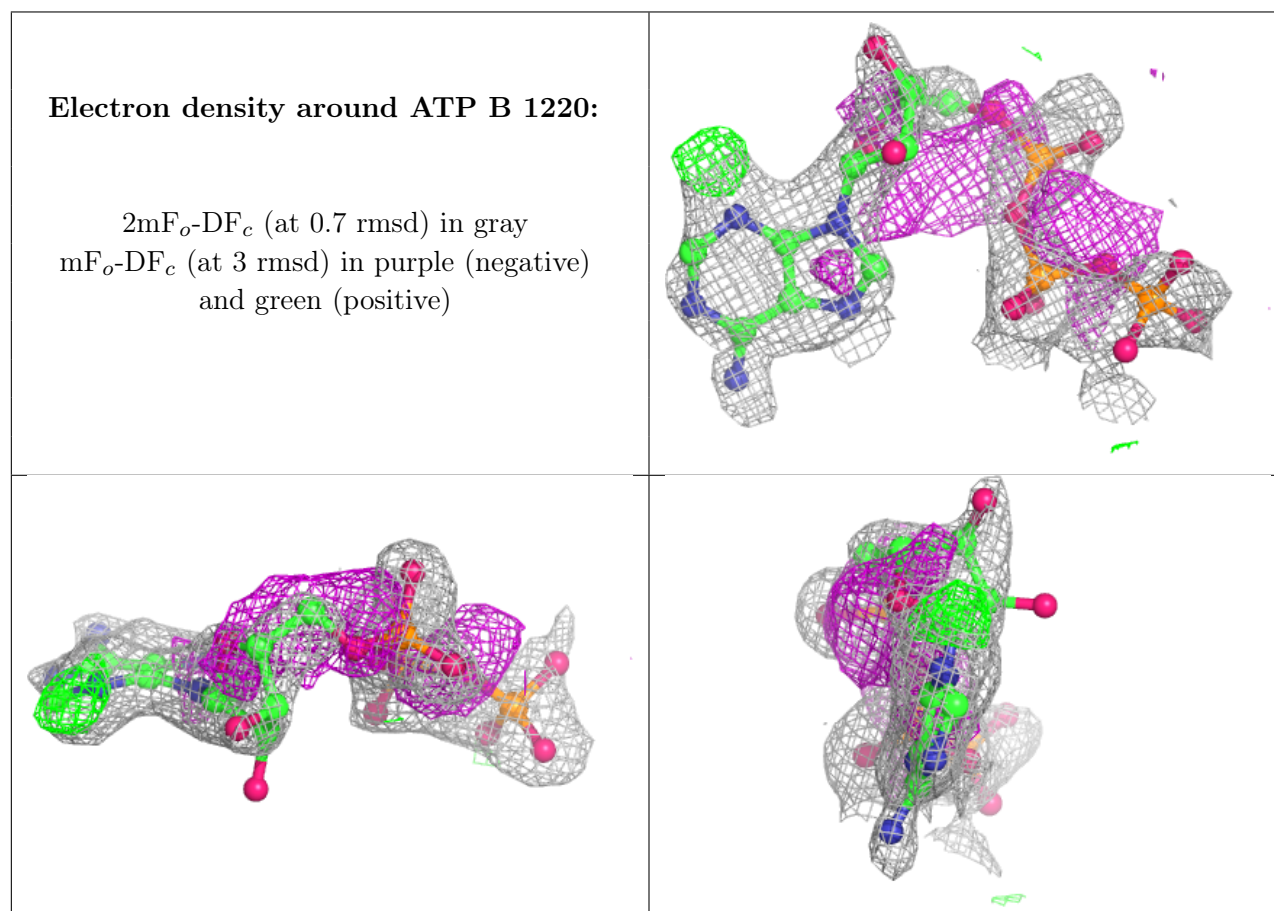
There are no monosaccharides in this entry.

6.4 Ligands [i](#)

In the following table, the Atoms column lists the number of modelled atoms in the group and the number defined in the chemical component dictionary. The B-factors column lists the minimum, median, 95th percentile and maximum values of B factors of atoms in the group. The column labelled 'Q < 0.9' lists the number of atoms with occupancy less than 0.9.

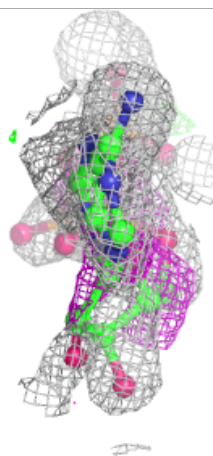
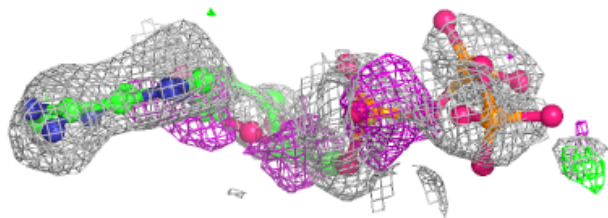
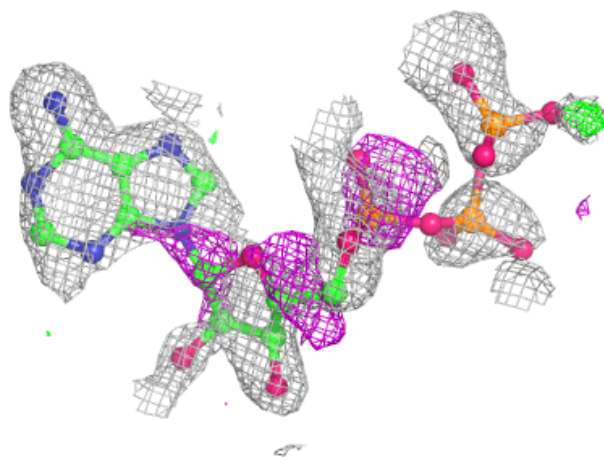
Mol	Type	Chain	Res	Atoms	RSCC	RSR	B-factors(\AA^2)	Q<0.9
2	ATP	B	1220	31/31	0.77	0.28	26,58,111,131	0
2	ATP	A	223[B]	31/31	0.80	0.29	12,50,64,67	12
2	ATP	A	223[A]	31/31	0.80	0.29	17,52,66,87	12
3	MG	B	230	1/1	0.94	0.10	37,37,37,37	0

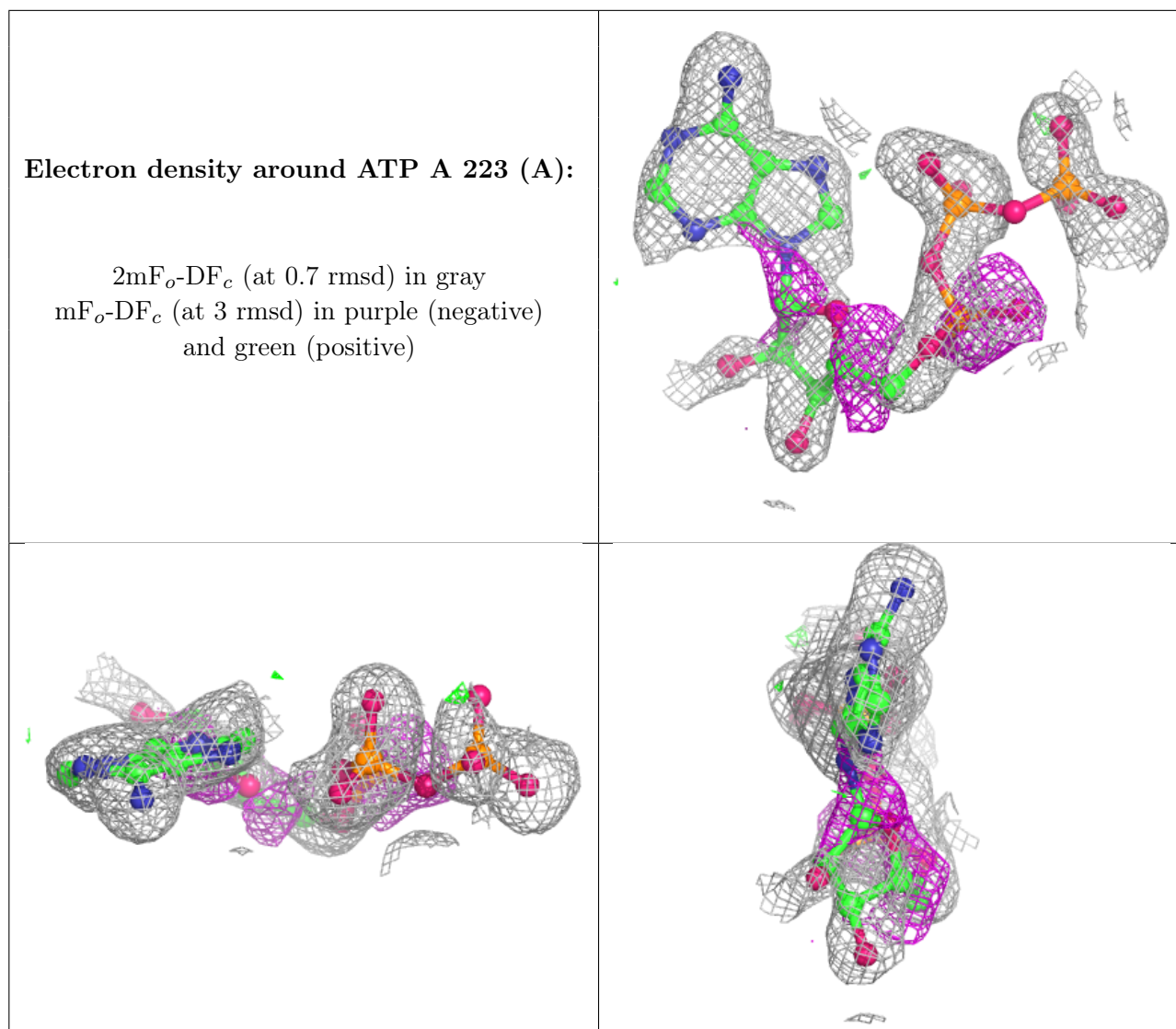
The following is a graphical depiction of the model fit to experimental electron density of all instances of the Ligand of Interest. In addition, ligands with molecular weight > 250 and outliers as shown on the geometry validation Tables will also be included. Each fit is shown from different orientation to approximate a three-dimensional view.



Electron density around ATP A 223 (B):

$2mF_o-DF_c$ (at 0.7 rmsd) in gray
 mF_o-DF_c (at 3 rmsd) in purple (negative)
and green (positive)





6.5 Other polymers ⓘ

There are no such residues in this entry.