



# Full wwPDB X-ray Structure Validation Report ⓘ

Oct 16, 2023 – 03:46 PM EDT

PDB ID : 1XK9  
Title : Pseudomonas exotoxin A in complex with the PJ34 inhibitor  
Authors : Yates, S.P.; Taylor, P.J.; Joergensen, R.; Ferraris, D.; Zhang, J.; Andersen, G.R.; Merrill, A.R.  
Deposited on : 2004-09-28  
Resolution : 2.10 Å(reported)

This is a Full wwPDB X-ray Structure Validation Report for a publicly released PDB entry.

We welcome your comments at [validation@mail.wwpdb.org](mailto:validation@mail.wwpdb.org)

A user guide is available at

<https://www.wwpdb.org/validation/2017/XrayValidationReportHelp>

with specific help available everywhere you see the ⓘ symbol.

The types of validation reports are described at

<http://www.wwpdb.org/validation/2017/FAQs#types>.

---

The following versions of software and data (see [references ⓘ](#)) were used in the production of this report:

MolProbity : 4.02b-467  
Mogul : 1.8.5 (274361), CSD as541be (2020)  
Xtriage (Phenix) : 1.13  
EDS : 2.36  
buster-report : 1.1.7 (2018)  
Percentile statistics : 20191225.v01 (using entries in the PDB archive December 25th 2019)  
Refmac : 5.8.0158  
CCP4 : 7.0.044 (Gargrove)  
Ideal geometry (proteins) : Engh & Huber (2001)  
Ideal geometry (DNA, RNA) : Parkinson et al. (1996)  
Validation Pipeline (wwPDB-VP) : 2.36

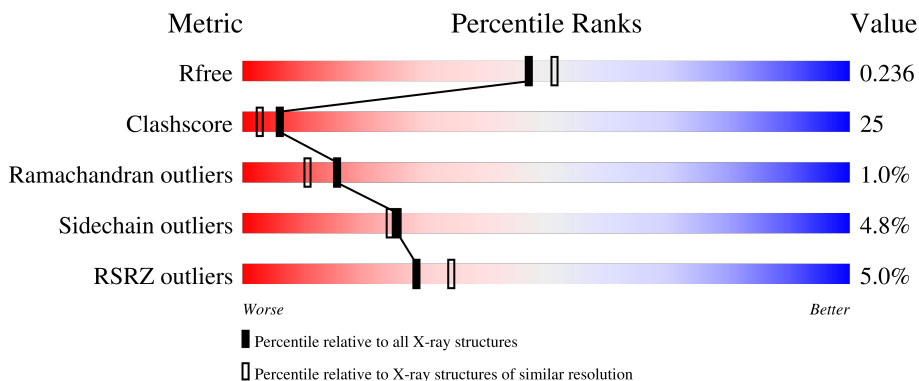
# 1 Overall quality at a glance

The following experimental techniques were used to determine the structure:

*X-RAY DIFFRACTION*

The reported resolution of this entry is 2.10 Å.

Percentile scores (ranging between 0-100) for global validation metrics of the entry are shown in the following graphic. The table shows the number of entries on which the scores are based.



Metric	Whole archive (#Entries)	Similar resolution (#Entries, resolution range(Å))
$R_{free}$	130704	5197 (2.10-2.10)
Clashscore	141614	5710 (2.10-2.10)
Ramachandran outliers	138981	5647 (2.10-2.10)
Sidechain outliers	138945	5648 (2.10-2.10)
RSRZ outliers	127900	5083 (2.10-2.10)

The table below summarises the geometric issues observed across the polymeric chains and their fit to the electron density. The red, orange, yellow and green segments of the lower bar indicate the fraction of residues that contain outliers for  $\geq 3$ , 2, 1 and 0 types of geometric quality criteria respectively. A grey segment represents the fraction of residues that are not modelled. The numeric value for each fraction is indicated below the corresponding segment, with a dot representing fractions  $\leq 5\%$ . The upper red bar (where present) indicates the fraction of residues that have poor fit to the electron density. The numeric value is given above the bar.

Mol	Chain	Length	Quality of chain
1	A	215	 6% 62% 29% • 5%
1	B	215	 4% 59% 30% • 8%

The following table lists non-polymeric compounds, carbohydrate monomers and non-standard residues in protein, DNA, RNA chains that are outliers for geometric or electron-density-fit criteria:

Mol	Type	Chain	Res	Chirality	Geometry	Clashes	Electron density
2	P34	A	1001	-	X	X	-
2	P34	B	2001	-	X	X	-

## 2 Entry composition [i](#)

There are 3 unique types of molecules in this entry. The entry contains 3535 atoms, of which 0 are hydrogens and 0 are deuteriums.

In the tables below, the ZeroOcc column contains the number of atoms modelled with zero occupancy, the AltConf column contains the number of residues with at least one atom in alternate conformation and the Trace column contains the number of residues modelled with at most 2 atoms.

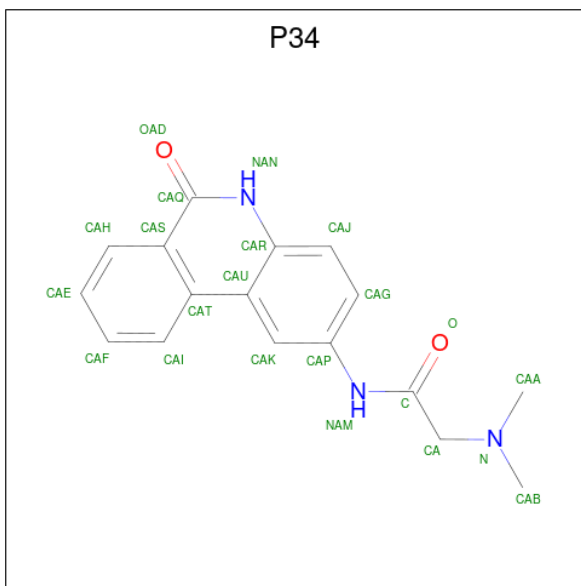
- Molecule 1 is a protein called Exotoxin A.

Mol	Chain	Residues	Atoms				ZeroOcc	AltConf	Trace
			Total	C	N	O			
1	A	204	1567	989	279	299	0	0	0
1	B	198	1523	964	272	287	0	0	0

There are 4 discrepancies between the modelled and reference sequences:

Chain	Residue	Modelled	Actual	Comment	Reference
A	407	VAL	ILE	engineered mutation	UNP P11439
A	515	SER	GLY	engineered mutation	UNP P11439
B	407	VAL	ILE	engineered mutation	UNP P11439
B	515	SER	GLY	engineered mutation	UNP P11439

- Molecule 2 is N 2 ,N 2 -DIMETHYL-N 1 -(6-OXO-5,6-DIHYDROPHENANTHRIDIN-2-Y L)GLYCINAMIDE (three-letter code: P34) (formula: C<sub>17</sub>H<sub>17</sub>N<sub>3</sub>O<sub>2</sub>).



Mol	Chain	Residues	Atoms				ZeroOcc	AltConf
2	A	1	Total	C	N	O	0	0
			22	17	3	2		
2	B	1	Total	C	N	O	0	0
			22	17	3	2		

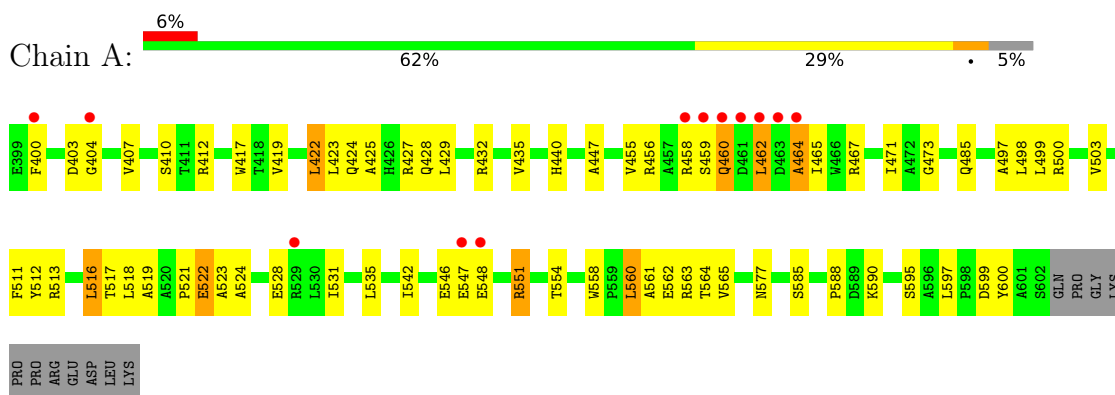
- Molecule 3 is water.

Mol	Chain	Residues	Atoms		ZeroOcc	AltConf
3	A	204	Total	O	0	0
			204	204		
3	B	197	Total	O	0	0
			197	197		

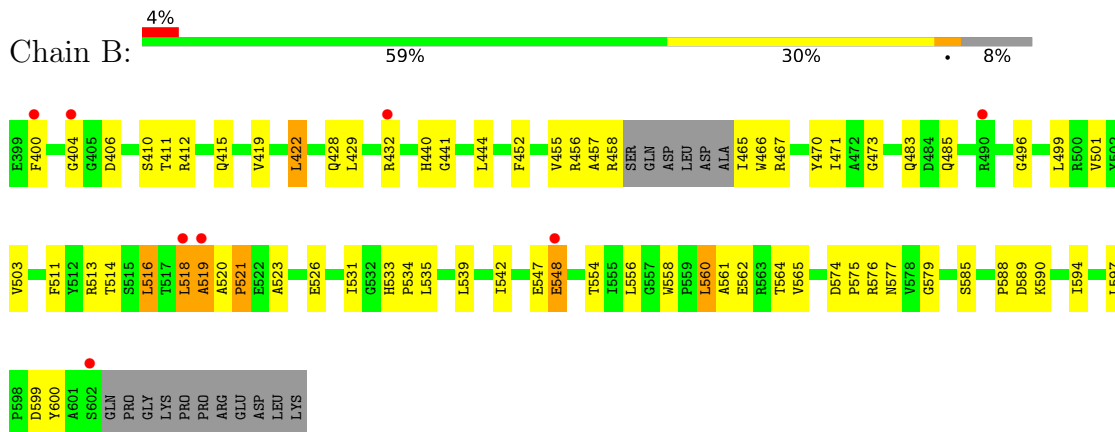
### 3 Residue-property plots

These plots are drawn for all protein, RNA, DNA and oligosaccharide chains in the entry. The first graphic for a chain summarises the proportions of the various outlier classes displayed in the second graphic. The second graphic shows the sequence view annotated by issues in geometry and electron density. Residues are color-coded according to the number of geometric quality criteria for which they contain at least one outlier: green = 0, yellow = 1, orange = 2 and red = 3 or more. A red dot above a residue indicates a poor fit to the electron density ( $RSRZ > 2$ ). Stretches of 2 or more consecutive residues without any outlier are shown as a green connector. Residues present in the sample, but not in the model, are shown in grey.

- Molecule 1: Exotoxin A



- Molecule 1: Exotoxin A



## 4 Data and refinement statistics

Property	Value	Source
Space group	P 21 21 21	Depositor
Cell constants a, b, c, $\alpha$ , $\beta$ , $\gamma$	56.04Å 78.68Å 91.69Å 90.00° 90.00° 90.00°	Depositor
Resolution (Å)	35.00 – 2.10 19.23 – 2.06	Depositor EDS
% Data completeness (in resolution range)	(Not available) (35.00-2.10) 99.5 (19.23-2.06)	Depositor EDS
$R_{merge}$	0.11	Depositor
$R_{sym}$	(Not available)	Depositor
$\langle I/\sigma(I) \rangle$ <sup>1</sup>	2.24 (at 2.06Å)	Xtrriage
Refinement program	CNS	Depositor
R, $R_{free}$	0.213 , 0.235 0.209 , 0.236	Depositor DCC
$R_{free}$ test set	1313 reflections (5.10%)	wwPDB-VP
Wilson B-factor (Å <sup>2</sup> )	19.2	Xtrriage
Anisotropy	0.748	Xtrriage
Bulk solvent $k_{sol}$ (e/Å <sup>3</sup> ), $B_{sol}$ (Å <sup>2</sup> )	0.39 , 51.5	EDS
L-test for twinning <sup>2</sup>	$\langle  L  \rangle = 0.48$ , $\langle L^2 \rangle = 0.31$	Xtrriage
Estimated twinning fraction	No twinning to report.	Xtrriage
$F_o, F_c$ correlation	0.95	EDS
Total number of atoms	3535	wwPDB-VP
Average B, all atoms (Å <sup>2</sup> )	24.0	wwPDB-VP

Xtrriage's analysis on translational NCS is as follows: *The analyses of the Patterson function reveals a significant off-origin peak that is 44.79 % of the origin peak, indicating pseudo-translational symmetry. The chance of finding a peak of this or larger height randomly in a structure without pseudo-translational symmetry is equal to 1.4497e-04. The detected translational NCS is most likely also responsible for the elevated intensity ratio.*

<sup>1</sup>Intensities estimated from amplitudes.

<sup>2</sup>Theoretical values of  $\langle |L| \rangle$ ,  $\langle L^2 \rangle$  for acentric reflections are 0.5, 0.333 respectively for untwinned datasets, and 0.375, 0.2 for perfectly twinned datasets.

## 5 Model quality [i](#)

### 5.1 Standard geometry [i](#)

Bond lengths and bond angles in the following residue types are not validated in this section: P34

The Z score for a bond length (or angle) is the number of standard deviations the observed value is removed from the expected value. A bond length (or angle) with  $|Z| > 5$  is considered an outlier worth inspection. RMSZ is the root-mean-square of all Z scores of the bond lengths (or angles).

Mol	Chain	Bond lengths		Bond angles	
		RMSZ	# Z  >5	RMSZ	# Z  >5
1	A	0.35	0/1605	0.67	3/2187 (0.1%)
1	B	0.34	0/1560	0.64	1/2124 (0.0%)
All	All	0.35	0/3165	0.66	4/4311 (0.1%)

There are no bond length outliers.

All (4) bond angle outliers are listed below:

Mol	Chain	Res	Type	Atoms	Z	Observed(°)	Ideal(°)
1	A	464	ALA	N-CA-C	-5.84	95.23	111.00
1	A	404	GLY	N-CA-C	-5.43	99.53	113.10
1	A	462	LEU	CA-CB-CG	5.35	127.60	115.30
1	B	404	GLY	N-CA-C	-5.30	99.84	113.10

There are no chirality outliers.

There are no planarity outliers.

### 5.2 Too-close contacts [i](#)

In the following table, the Non-H and H(model) columns list the number of non-hydrogen atoms and hydrogen atoms in the chain respectively. The H(added) column lists the number of hydrogen atoms added and optimized by MolProbity. The Clashes column lists the number of clashes within the asymmetric unit, whereas Symm-Clashes lists symmetry-related clashes.

Mol	Chain	Non-H	H(model)	H(added)	Clashes	Symm-Clashes
1	A	1567	0	1521	74	0
1	B	1523	0	1483	65	0
2	A	22	0	17	10	0
2	B	22	0	17	13	0
3	A	204	0	0	38	0

*Continued on next page...*



*Continued from previous page...*

Mol	Chain	Non-H	H(model)	H(added)	Clashes	Symm-Clashes
3	B	197	0	0	27	0
All	All	3535	0	3038	152	0

The all-atom clashscore is defined as the number of clashes found per 1000 atoms (including hydrogen atoms). The all-atom clashscore for this structure is 25.

All (152) close contacts within the same asymmetric unit are listed below, sorted by their clash magnitude.

Atom-1	Atom-2	Interatomic distance (Å)	Clash overlap (Å)
2:B:2001:P34:CAA	2:B:2001:P34:HAG	1.50	1.37
2:B:2001:P34:CAA	2:B:2001:P34:CAG	2.24	1.15
1:A:531:ILE:HB	3:A:1050:HOH:O	1.47	1.13
2:B:2001:P34:CAG	2:B:2001:P34:HAA1	1.83	1.07
2:B:2001:P34:HAG	2:B:2001:P34:HAA2	1.11	1.06
2:B:2001:P34:HAA1	2:B:2001:P34:CAP	1.95	0.94
1:B:519:ALA:HA	3:B:2145:HOH:O	1.72	0.89
1:A:424:GLN:HG2	3:A:1096:HOH:O	1.75	0.87
1:B:585:SER:HB2	3:B:2052:HOH:O	1.75	0.86
2:A:1001:P34:HAG	2:A:1001:P34:HAB3	1.56	0.86
1:B:548:GLU:O	1:B:548:GLU:HG3	1.77	0.84
2:B:2001:P34:CAG	2:B:2001:P34:HAA2	2.01	0.80
1:A:417:TRP:HB2	3:A:1077:HOH:O	1.82	0.79
1:A:517:THR:HB	3:A:1054:HOH:O	1.81	0.78
1:A:558:TRP:O	1:A:562:GLU:HG3	1.84	0.78
1:A:518:LEU:HD11	3:A:1119:HOH:O	1.85	0.77
1:A:419:VAL:HG13	3:A:1074:HOH:O	1.85	0.77
1:B:428:GLN:HB3	3:B:2102:HOH:O	1.86	0.76
1:A:458:ARG:HB2	3:A:1131:HOH:O	1.85	0.75
1:B:485:GLN:HG3	2:B:2001:P34:HAB2	1.69	0.74
1:A:585:SER:HB2	3:A:1116:HOH:O	1.88	0.74
1:A:460:GLN:HG3	1:A:464:ALA:HB2	1.68	0.73
1:B:422:LEU:HD11	1:B:594:ILE:HD11	1.71	0.72
2:A:1001:P34:CAP	2:A:1001:P34:HAA2	2.20	0.72
1:A:425:ALA:HA	3:A:1096:HOH:O	1.89	0.71
1:B:400:PHE:CE2	1:B:432:ARG:HD2	2.24	0.71
1:B:415:GLN:HG2	3:B:2109:HOH:O	1.90	0.70
1:B:467:ARG:HD3	3:B:2149:HOH:O	1.92	0.70
1:A:503:VAL:HG12	1:A:564:THR:HG22	1.73	0.70
3:A:1175:HOH:O	1:B:465:ILE:HD11	1.91	0.69
1:A:460:GLN:HB3	3:A:1166:HOH:O	1.92	0.69
2:A:1001:P34:HAB3	2:A:1001:P34:CAG	2.22	0.69

*Continued on next page...*

*Continued from previous page...*

Atom-1	Atom-2	Interatomic distance (Å)	Clash overlap (Å)
1:B:471:ILE:HG23	3:B:2080:HOH:O	1.92	0.68
1:B:516:LEU:HD23	1:B:526:GLU:HG2	1.74	0.68
2:B:2001:P34:HAA1	2:B:2001:P34:NAM	2.04	0.68
1:B:558:TRP:O	1:B:562:GLU:HG3	1.93	0.67
1:A:429:LEU:HD21	1:A:565:VAL:HG11	1.77	0.67
1:B:513:ARG:HD2	1:B:600:TYR:HB2	1.75	0.67
1:A:419:VAL:HG21	1:A:590:LYS:HB2	1.77	0.67
1:B:465:ILE:N	3:B:2069:HOH:O	2.27	0.66
1:A:518:LEU:HD21	3:A:1119:HOH:O	1.95	0.65
1:A:403:ASP:CG	1:B:465:ILE:HG13	2.19	0.63
1:B:518:LEU:O	1:B:520:ALA:N	2.31	0.62
1:A:513:ARG:HD2	1:A:600:TYR:HB2	1.81	0.62
1:A:512:TYR:CD1	1:A:531:ILE:HD13	2.35	0.62
1:A:546:GLU:HG2	3:A:1165:HOH:O	1.99	0.62
1:B:588:PRO:HG3	3:B:2136:HOH:O	2.00	0.62
1:B:471:ILE:HG21	1:B:501:VAL:HG21	1.82	0.61
1:A:456:ARG:NH1	3:A:1120:HOH:O	2.28	0.61
1:A:588:PRO:HG3	3:A:1140:HOH:O	2.00	0.61
1:B:440:HIS:HB2	1:B:471:ILE:HG22	1.82	0.60
1:B:400:PHE:HE2	1:B:432:ARG:HD2	1.66	0.59
1:A:518:LEU:HB2	3:A:1146:HOH:O	2.03	0.59
1:A:497:ALA:HB3	3:A:1082:HOH:O	2.03	0.58
1:A:412:ARG:HD3	3:A:1115:HOH:O	2.02	0.58
1:A:485:GLN:CG	2:A:1001:P34:CAB	2.82	0.58
1:A:456:ARG:HG3	3:A:1120:HOH:O	2.02	0.58
1:A:459:SER:HB3	3:A:1004:HOH:O	2.04	0.57
1:B:503:VAL:HG12	1:B:564:THR:HG22	1.85	0.57
1:B:428:GLN:O	1:B:432:ARG:HG3	2.05	0.57
1:B:444:LEU:HD13	1:B:496:GLY:HA2	1.85	0.57
1:A:429:LEU:HG	3:A:1079:HOH:O	2.04	0.57
1:B:556:LEU:HD22	1:B:560:LEU:HD13	1.87	0.57
1:A:428:GLN:O	1:A:432:ARG:HG3	2.04	0.57
2:A:1001:P34:HAA2	2:A:1001:P34:NAM	2.20	0.56
1:A:460:GLN:HG3	1:A:464:ALA:CB	2.35	0.56
1:A:516:LEU:HD13	1:A:523:ALA:HA	1.87	0.55
1:A:485:GLN:HG3	2:A:1001:P34:HAB1	1.87	0.55
1:B:465:ILE:N	3:B:2025:HOH:O	2.39	0.55
1:A:407:VAL:HG22	3:A:1077:HOH:O	2.06	0.54
1:A:485:GLN:HG3	2:A:1001:P34:CAB	2.38	0.54
1:B:473:GLY:HA3	1:B:597:LEU:HD11	1.90	0.53
1:B:514:THR:HG22	1:B:542:ILE:HD11	1.89	0.53

*Continued on next page...*

*Continued from previous page...*

Atom-1	Atom-2	Interatomic distance (Å)	Clash overlap (Å)
1:B:579:GLY:N	3:B:2172:HOH:O	2.26	0.53
1:A:546:GLU:OE2	1:A:551:ARG:HB2	2.09	0.53
1:B:458:ARG:C	3:B:2167:HOH:O	2.47	0.53
1:B:466:TRP:HA	3:B:2061:HOH:O	2.08	0.53
1:A:498:LEU:C	1:A:499:LEU:HD12	2.29	0.53
1:B:511:PHE:CE1	1:B:560:LEU:HD11	2.44	0.53
1:B:456:ARG:O	1:B:458:ARG:HG3	2.08	0.52
1:A:497:ALA:N	3:A:1082:HOH:O	2.42	0.52
1:B:467:ARG:NE	3:B:2138:HOH:O	2.41	0.52
1:A:424:GLN:C	3:A:1096:HOH:O	2.47	0.52
1:A:548:GLU:HB2	3:A:1184:HOH:O	2.10	0.52
1:A:427:ARG:HG2	1:A:427:ARG:HH11	1.75	0.51
1:B:441:GLY:N	2:B:2001:P34:OAD	2.37	0.51
1:B:471:ILE:HG13	1:B:554:THR:HB	1.93	0.51
1:A:455:VAL:HG11	1:A:561:ALA:HB1	1.93	0.51
1:A:462:LEU:HD12	1:A:462:LEU:O	2.11	0.51
2:A:1001:P34:HA1	3:A:1051:HOH:O	2.11	0.50
1:B:467:ARG:NH1	3:B:2057:HOH:O	2.32	0.50
2:B:2001:P34:CAA	2:B:2001:P34:CAP	2.73	0.50
1:B:574:ASP:HB3	1:B:577:ASN:HB3	1.94	0.50
1:A:547:GLU:N	3:A:1183:HOH:O	2.46	0.49
1:B:411:THR:O	1:B:575:PRO:HB3	2.12	0.49
1:A:440:HIS:HB2	1:A:471:ILE:HG22	1.95	0.49
1:A:531:ILE:HG22	1:A:531:ILE:O	2.13	0.49
1:A:400:PHE:CE2	1:A:432:ARG:HD3	2.48	0.48
1:A:511:PHE:CE1	1:A:560:LEU:HD11	2.48	0.48
1:A:595:SER:HB2	3:A:1124:HOH:O	2.14	0.48
1:A:425:ALA:CA	3:A:1096:HOH:O	2.55	0.48
1:A:425:ALA:N	3:A:1096:HOH:O	2.47	0.48
1:A:542:ILE:HG13	3:A:1119:HOH:O	2.13	0.48
1:B:406:ASP:HA	3:B:2077:HOH:O	2.13	0.47
1:B:547:GLU:HG3	1:B:548:GLU:H	1.79	0.47
1:A:577:ASN:ND2	3:A:1090:HOH:O	2.43	0.47
1:A:590:LYS:HD2	3:A:1074:HOH:O	2.13	0.47
1:B:429:LEU:HD21	1:B:565:VAL:HG11	1.96	0.47
1:A:519:ALA:HB2	1:A:547:GLU:HB2	1.97	0.47
1:A:471:ILE:HG13	1:A:554:THR:HB	1.96	0.47
1:B:465:ILE:HG23	1:B:535:LEU:HB2	1.97	0.47
1:B:534:PRO:HB3	3:B:2181:HOH:O	2.15	0.47
1:B:452:PHE:HE2	3:B:2174:HOH:O	1.97	0.46
1:B:457:ALA:HB2	1:B:558:TRP:CD2	2.51	0.46

*Continued on next page...*

*Continued from previous page...*

Atom-1	Atom-2	Interatomic distance (Å)	Clash overlap (Å)
1:B:410:SER:HB3	3:B:2109:HOH:O	2.16	0.46
1:B:516:LEU:CD2	1:B:526:GLU:HG2	2.43	0.45
1:A:400:PHE:CD2	1:A:429:LEU:HD23	2.52	0.44
1:A:522:GLU:H	1:A:522:GLU:CD	2.20	0.44
1:A:419:VAL:CG2	1:A:590:LYS:HB2	2.46	0.44
1:A:465:ILE:HG23	1:A:535:LEU:CB	2.47	0.44
1:A:419:VAL:O	1:A:423:LEU:HG	2.16	0.44
1:A:551:ARG:NH2	3:A:1057:HOH:O	2.47	0.44
1:B:531:ILE:HD13	1:B:533:HIS:CE1	2.53	0.44
1:B:539:LEU:HD23	1:B:560:LEU:HG	2.00	0.43
1:A:531:ILE:HG21	3:A:1130:HOH:O	2.18	0.43
1:A:473:GLY:HA3	1:A:597:LEU:HD11	2.01	0.43
1:B:535:LEU:HD13	3:B:2061:HOH:O	2.19	0.43
1:A:435:VAL:HG22	3:A:1005:HOH:O	2.18	0.43
1:B:589:ASP:HB3	3:B:2148:HOH:O	2.19	0.43
1:A:547:GLU:HA	3:A:1054:HOH:O	2.17	0.42
2:B:2001:P34:CAA	2:B:2001:P34:NAM	2.78	0.42
1:B:457:ALA:HB2	1:B:558:TRP:CG	2.54	0.42
1:B:483:GLN:CD	3:B:2172:HOH:O	2.57	0.42
1:B:412:ARG:NH1	3:B:2101:HOH:O	2.52	0.42
1:B:514:THR:HA	3:B:2133:HOH:O	2.18	0.42
1:A:521:PRO:HD2	3:A:1108:HOH:O	2.20	0.41
1:B:519:ALA:HB3	3:B:2091:HOH:O	2.20	0.41
1:A:422:LEU:HD21	1:A:500:ARG:HD3	2.02	0.41
1:B:576:ARG:O	3:B:2185:HOH:O	2.22	0.41
1:A:485:GLN:CG	2:A:1001:P34:HAB1	2.49	0.41
1:B:521:PRO:C	1:B:523:ALA:H	2.24	0.41
1:B:590:LYS:HD3	1:B:590:LYS:HA	1.87	0.41
1:B:440:HIS:HA	2:B:2001:P34:OAD	2.20	0.41
1:A:524:ALA:O	1:A:528:GLU:HG3	2.21	0.41
1:B:483:GLN:NE2	3:B:2172:HOH:O	2.53	0.41
1:A:464:ALA:O	1:A:467:ARG:HG2	2.21	0.41
1:A:447:ALA:HA	1:A:499:LEU:HD21	2.02	0.40
1:A:521:PRO:HG2	1:A:522:GLU:OE1	2.21	0.40
1:B:470:TYR:HB3	2:B:2001:P34:CAI	2.51	0.40
1:A:440:HIS:HA	2:A:1001:P34:OAD	2.21	0.40
1:B:456:ARG:NH1	3:B:2194:HOH:O	2.54	0.40
1:B:455:VAL:HG11	1:B:561:ALA:HB1	2.03	0.40

There are no symmetry-related clashes.

## 5.3 Torsion angles [i](#)

### 5.3.1 Protein backbone [i](#)

In the following table, the Percentiles column shows the percent Ramachandran outliers of the chain as a percentile score with respect to all X-ray entries followed by that with respect to entries of similar resolution.

The Analysed column shows the number of residues for which the backbone conformation was analysed, and the total number of residues.

Mol	Chain	Analysed	Favoured	Allowed	Outliers	Percentiles	
1	A	202/215 (94%)	194 (96%)	7 (4%)	1 (0%)	29	26
1	B	194/215 (90%)	184 (95%)	7 (4%)	3 (2%)	10	5
All	All	396/430 (92%)	378 (96%)	14 (4%)	4 (1%)	15	11

All (4) Ramachandran outliers are listed below:

Mol	Chain	Res	Type
1	B	519	ALA
1	B	518	LEU
1	A	460	GLN
1	B	521	PRO

### 5.3.2 Protein sidechains [i](#)

In the following table, the Percentiles column shows the percent sidechain outliers of the chain as a percentile score with respect to all X-ray entries followed by that with respect to entries of similar resolution.

The Analysed column shows the number of residues for which the sidechain conformation was analysed, and the total number of residues.

Mol	Chain	Analysed	Rotameric	Outliers	Percentiles	
1	A	159/170 (94%)	151 (95%)	8 (5%)	24	23
1	B	154/170 (91%)	147 (96%)	7 (4%)	27	27
All	All	313/340 (92%)	298 (95%)	15 (5%)	25	24

All (15) residues with a non-rotameric sidechain are listed below:

Mol	Chain	Res	Type
1	A	410	SER
1	A	422	LEU

*Continued on next page...*

*Continued from previous page...*

Mol	Chain	Res	Type
1	A	516	LEU
1	A	522	GLU
1	A	551	ARG
1	A	560	LEU
1	A	563	ARG
1	A	599	ASP
1	B	419	VAL
1	B	422	LEU
1	B	499	LEU
1	B	516	LEU
1	B	548	GLU
1	B	560	LEU
1	B	599	ASP

Sometimes sidechains can be flipped to improve hydrogen bonding and reduce clashes. All (1) such sidechains are listed below:

Mol	Chain	Res	Type
1	A	485	GLN

### 5.3.3 RNA [i](#)

There are no RNA molecules in this entry.

### 5.4 Non-standard residues in protein, DNA, RNA chains [i](#)

There are no non-standard protein/DNA/RNA residues in this entry.

### 5.5 Carbohydrates [i](#)

There are no monosaccharides in this entry.

### 5.6 Ligand geometry [i](#)

2 ligands are modelled in this entry.

In the following table, the Counts columns list the number of bonds (or angles) for which Mogul statistics could be retrieved, the number of bonds (or angles) that are observed in the model and the number of bonds (or angles) that are defined in the Chemical Component Dictionary. The Link column lists molecule types, if any, to which the group is linked. The Z score for a bond

length (or angle) is the number of standard deviations the observed value is removed from the expected value. A bond length (or angle) with  $|Z| > 2$  is considered an outlier worth inspection. RMSZ is the root-mean-square of all Z scores of the bond lengths (or angles).

Mol	Type	Chain	Res	Link	Bond lengths			Bond angles		
					Counts	RMSZ	# Z  > 2	Counts	RMSZ	# Z  > 2
2	P34	B	2001	-	23,24,24	3.24	15 (65%)	30,34,34	3.13	11 (36%)
2	P34	A	1001	-	23,24,24	3.20	14 (60%)	30,34,34	3.25	11 (36%)

In the following table, the Chirals column lists the number of chiral outliers, the number of chiral centers analysed, the number of these observed in the model and the number defined in the Chemical Component Dictionary. Similar counts are reported in the Torsion and Rings columns. '-' means no outliers of that kind were identified.

Mol	Type	Chain	Res	Link	Chirals	Torsions	Rings
2	P34	B	2001	-	-	3/8/8/8	0/3/3/3
2	P34	A	1001	-	-	3/8/8/8	0/3/3/3

All (29) bond length outliers are listed below:

Mol	Chain	Res	Type	Atoms	Z	Observed(Å)	Ideal(Å)
2	A	1001	P34	CAQ-NAN	6.97	1.45	1.33
2	B	2001	P34	CAQ-NAN	6.73	1.44	1.33
2	B	2001	P34	CAK-CAP	5.43	1.49	1.37
2	A	1001	P34	CAK-CAP	5.17	1.48	1.37
2	B	2001	P34	CAR-NAN	4.94	1.43	1.35
2	A	1001	P34	CAR-NAN	4.89	1.43	1.35
2	B	2001	P34	CAJ-CAG	4.59	1.46	1.36
2	B	2001	P34	CAK-CAU	4.57	1.49	1.41
2	A	1001	P34	CAJ-CAG	4.56	1.46	1.36
2	A	1001	P34	CAF-CAI	4.42	1.46	1.36
2	B	2001	P34	CAF-CAI	4.36	1.46	1.36
2	A	1001	P34	CAK-CAU	4.35	1.49	1.41
2	B	2001	P34	CA-C	3.74	1.58	1.52
2	A	1001	P34	CA-C	3.67	1.58	1.52
2	B	2001	P34	C-NAM	3.65	1.43	1.35
2	A	1001	P34	C-NAM	3.49	1.43	1.35
2	B	2001	P34	CAE-CAH	3.16	1.43	1.36
2	A	1001	P34	CAE-CAH	2.97	1.43	1.36
2	B	2001	P34	CAG-CAP	2.91	1.44	1.39
2	A	1001	P34	CAH-CAS	2.81	1.46	1.41
2	A	1001	P34	CAG-CAP	2.79	1.44	1.39
2	B	2001	P34	CAH-CAS	2.58	1.46	1.41
2	A	1001	P34	CAJ-CAR	2.58	1.46	1.41

*Continued on next page...*

Continued from previous page...

Mol	Chain	Res	Type	Atoms	Z	Observed(Å)	Ideal(Å)
2	B	2001	P34	CAJ-CAR	2.48	1.46	1.41
2	B	2001	P34	CAI-CAT	2.47	1.46	1.41
2	A	1001	P34	CAI-CAT	2.37	1.45	1.41
2	A	1001	P34	CA-N	2.20	1.52	1.47
2	B	2001	P34	CA-N	2.14	1.52	1.47
2	B	2001	P34	CAT-CAU	2.00	1.51	1.45

All (22) bond angle outliers are listed below:

Mol	Chain	Res	Type	Atoms	Z	Observed(°)	Ideal(°)
2	A	1001	P34	CAP-NAM-C	8.91	143.09	127.50
2	B	2001	P34	CAP-NAM-C	8.26	141.94	127.50
2	A	1001	P34	CAU-CAR-NAN	-7.83	119.35	123.60
2	B	2001	P34	CAU-CAR-NAN	-7.65	119.45	123.60
2	A	1001	P34	CA-C-NAM	6.77	126.85	114.12
2	A	1001	P34	CAS-CAQ-NAN	-6.75	119.69	124.40
2	B	2001	P34	CA-C-NAM	6.72	126.76	114.12
2	B	2001	P34	CAS-CAQ-NAN	-6.19	120.09	124.40
2	A	1001	P34	CAR-NAN-CAQ	4.39	122.86	116.83
2	B	2001	P34	CAR-NAN-CAQ	4.33	122.77	116.83
2	A	1001	P34	O-C-NAM	-3.99	116.36	123.63
2	B	2001	P34	O-C-NAM	-3.98	116.36	123.63
2	A	1001	P34	CAK-CAP-NAM	-3.24	112.34	123.13
2	B	2001	P34	CAK-CAP-NAM	-3.10	112.80	123.13
2	A	1001	P34	CAG-CAP-NAM	2.95	130.31	120.40
2	B	2001	P34	CAG-CAP-NAM	2.81	129.84	120.40
2	A	1001	P34	O-C-CA	-2.45	116.79	121.08
2	B	2001	P34	O-C-CA	-2.40	116.88	121.08
2	B	2001	P34	CAK-CAU-CAT	2.37	125.38	121.78
2	A	1001	P34	CAK-CAU-CAT	2.30	125.28	121.78
2	B	2001	P34	CAK-CAU-CAR	-2.25	115.92	118.28
2	A	1001	P34	CAK-CAU-CAR	-2.21	115.97	118.28

There are no chirality outliers.

All (6) torsion outliers are listed below:

Mol	Chain	Res	Type	Atoms
2	A	1001	P34	C-CA-N-CAA
2	A	1001	P34	CA-C-NAM-CAP
2	A	1001	P34	O-C-NAM-CAP
2	B	2001	P34	C-CA-N-CAA
2	B	2001	P34	CA-C-NAM-CAP

Continued on next page...



*Continued from previous page...*

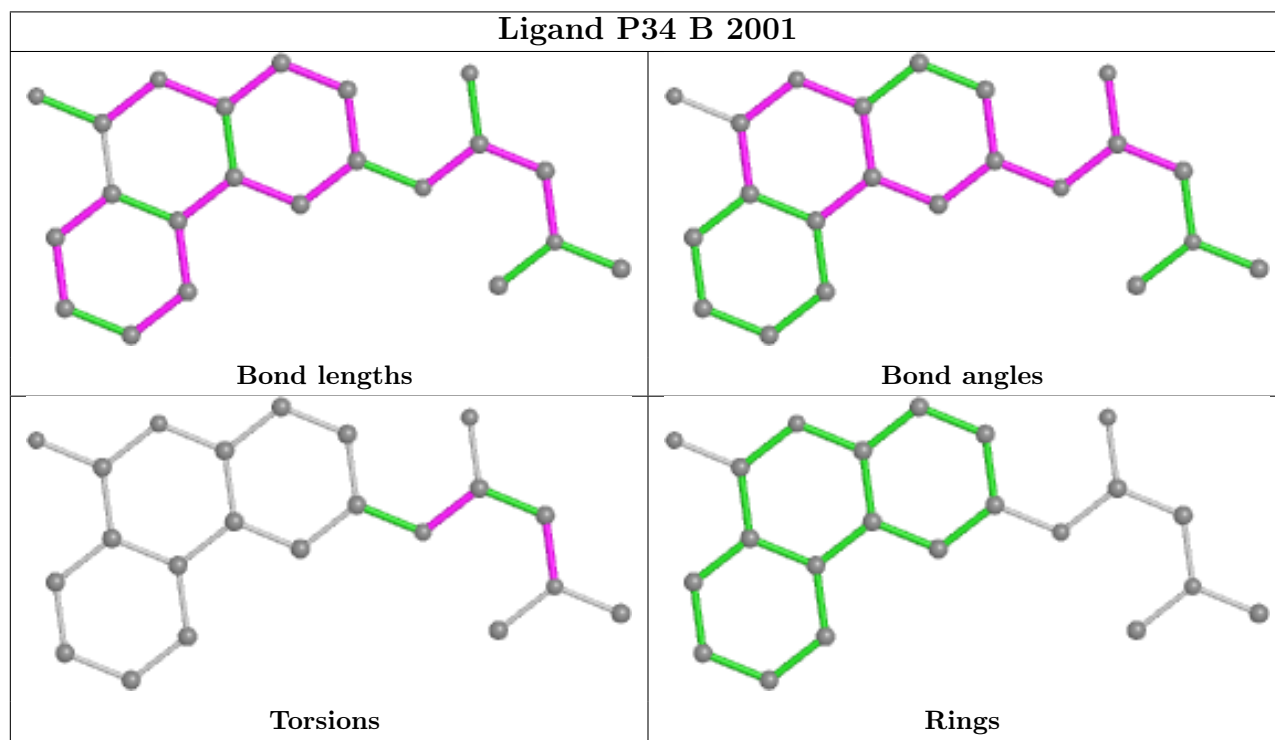
Mol	Chain	Res	Type	Atoms
2	B	2001	P34	O-C-NAM-CAP

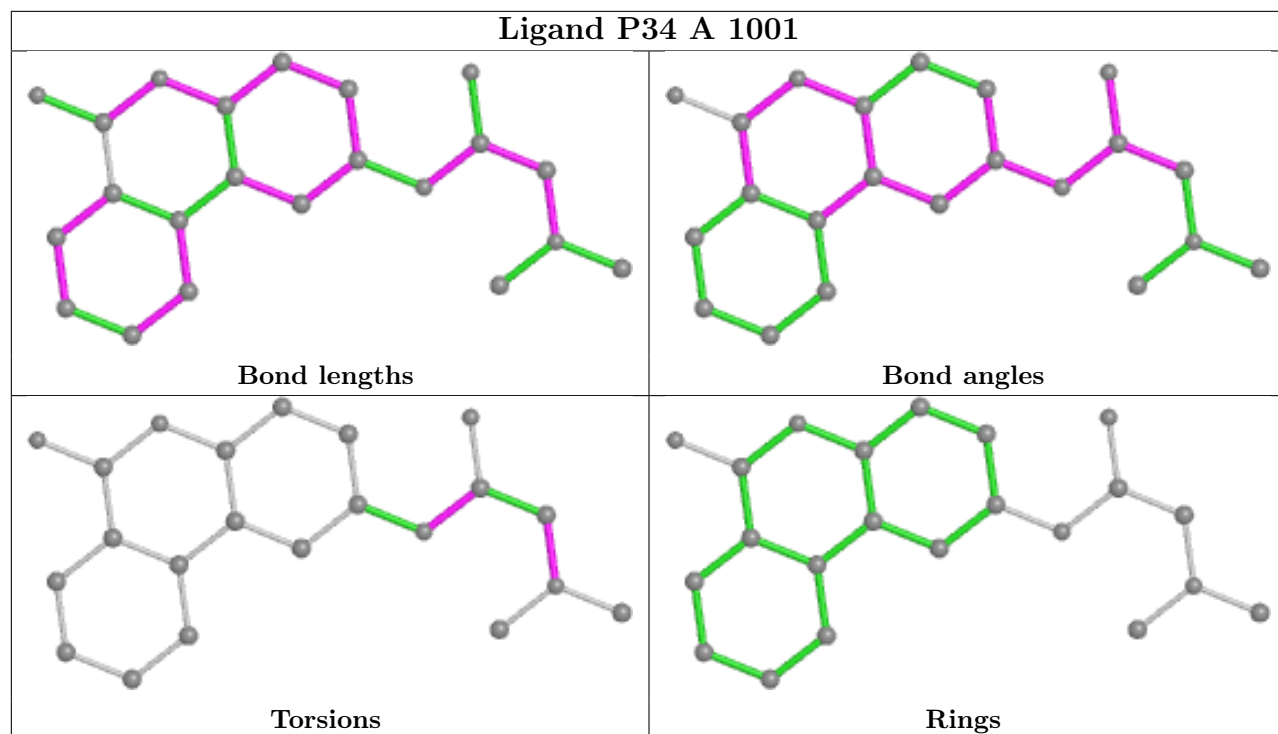
There are no ring outliers.

2 monomers are involved in 23 short contacts:

Mol	Chain	Res	Type	Clashes	Symm-Clashes
2	B	2001	P34	13	0
2	A	1001	P34	10	0

The following is a two-dimensional graphical depiction of Mogul quality analysis of bond lengths, bond angles, torsion angles, and ring geometry for all instances of the Ligand of Interest. In addition, ligands with molecular weight > 250 and outliers as shown on the validation Tables will also be included. For torsion angles, if less than 5% of the Mogul distribution of torsion angles is within 10 degrees of the torsion angle in question, then that torsion angle is considered an outlier. Any bond that is central to one or more torsion angles identified as an outlier by Mogul will be highlighted in the graph. For rings, the root-mean-square deviation (RMSD) between the ring in question and similar rings identified by Mogul is calculated over all ring torsion angles. If the average RMSD is greater than 60 degrees and the minimal RMSD between the ring in question and any Mogul-identified rings is also greater than 60 degrees, then that ring is considered an outlier. The outliers are highlighted in purple. The color gray indicates Mogul did not find sufficient equivalents in the CSD to analyse the geometry.





## 5.7 Other polymers [i](#)

There are no such residues in this entry.

## 5.8 Polymer linkage issues [i](#)

There are no chain breaks in this entry.

## 6 Fit of model and data

### 6.1 Protein, DNA and RNA chains

In the following table, the column labelled ‘#RSRZ > 2’ contains the number (and percentage) of RSRZ outliers, followed by percent RSRZ outliers for the chain as percentile scores relative to all X-ray entries and entries of similar resolution. The OWAB column contains the minimum, median, 95<sup>th</sup> percentile and maximum values of the occupancy-weighted average B-factor per residue. The column labelled ‘Q < 0.9’ lists the number of (and percentage) of residues with an average occupancy less than 0.9.

Mol	Chain	Analysed	<RSRZ>	#RSRZ>2	OWAB(Å <sup>2</sup> )	Q<0.9
1	A	204/215 (94%)	0.29	12 (5%) 22 27	10, 19, 40, 60	0
1	B	198/215 (92%)	0.26	8 (4%) 38 44	10, 20, 39, 51	0
All	All	402/430 (93%)	0.27	20 (4%) 28 34	10, 20, 40, 60	0

All (20) RSRZ outliers are listed below:

Mol	Chain	Res	Type	RSRZ
1	A	463	ASP	6.2
1	B	519	ALA	6.0
1	A	464	ALA	5.1
1	A	462	LEU	5.1
1	A	400	PHE	4.9
1	B	548	GLU	4.6
1	B	602	SER	4.2
1	A	548	GLU	3.7
1	A	459	SER	3.0
1	B	432	ARG	3.0
1	A	529	ARG	2.8
1	A	461	ASP	2.7
1	A	547	GLU	2.7
1	B	490	ARG	2.7
1	A	458	ARG	2.6
1	A	460	GLN	2.4
1	B	518	LEU	2.2
1	B	400	PHE	2.2
1	B	404	GLY	2.2
1	A	404	GLY	2.1

## 6.2 Non-standard residues in protein, DNA, RNA chains [i](#)

There are no non-standard protein/DNA/RNA residues in this entry.

## 6.3 Carbohydrates [i](#)

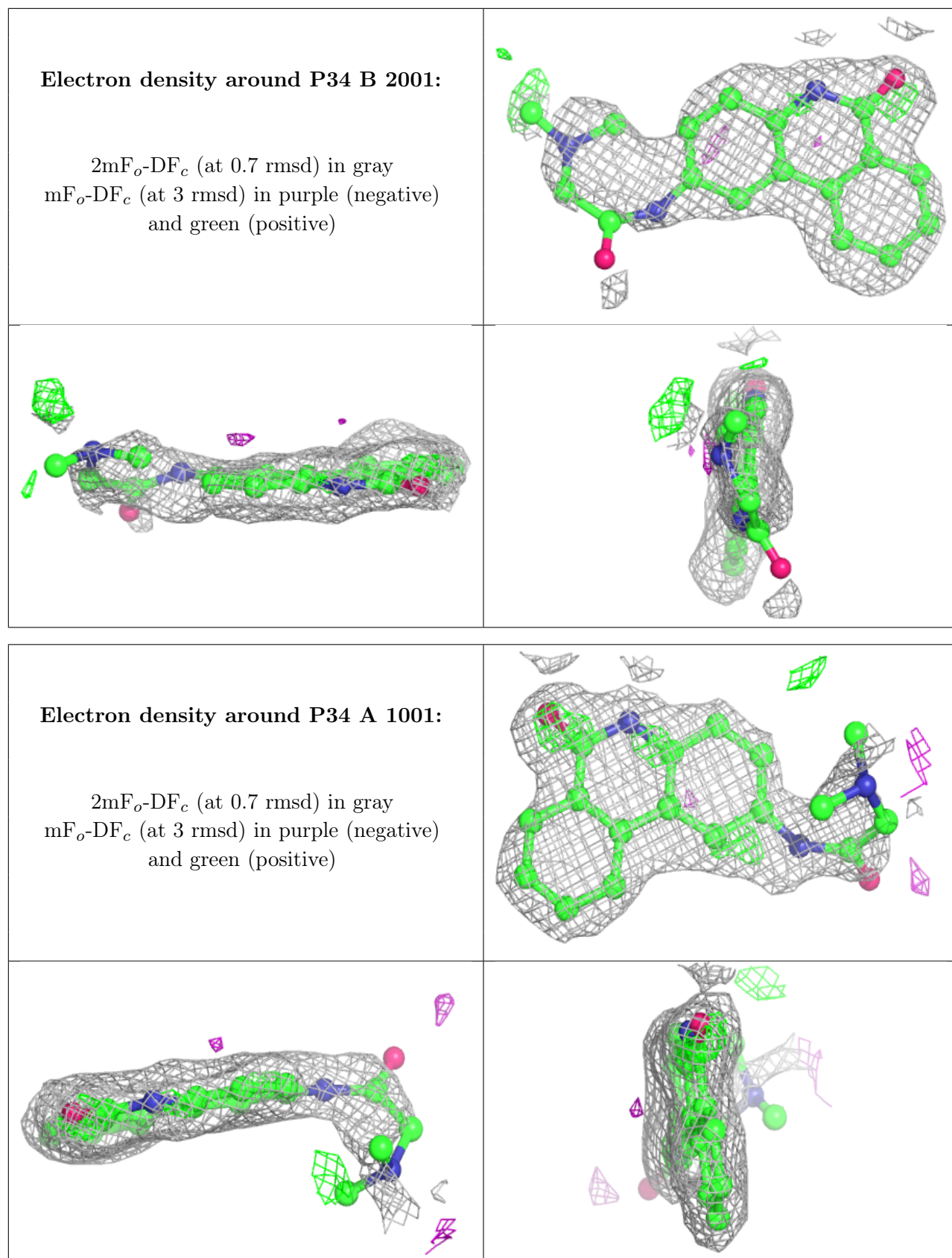
There are no monosaccharides in this entry.

## 6.4 Ligands [i](#)

In the following table, the Atoms column lists the number of modelled atoms in the group and the number defined in the chemical component dictionary. The B-factors column lists the minimum, median, 95<sup>th</sup> percentile and maximum values of B factors of atoms in the group. The column labelled 'Q< 0.9' lists the number of atoms with occupancy less than 0.9.

Mol	Type	Chain	Res	Atoms	RSCC	RSR	B-factors( $\text{\AA}^2$ )	Q<0.9
2	P34	B	2001	22/22	0.68	0.31	52,59,72,73	0
2	P34	A	1001	22/22	0.75	0.33	65,70,82,82	0

The following is a graphical depiction of the model fit to experimental electron density of all instances of the Ligand of Interest. In addition, ligands with molecular weight > 250 and outliers as shown on the geometry validation Tables will also be included. Each fit is shown from different orientation to approximate a three-dimensional view.



## 6.5 Other polymers [i](#)

There are no such residues in this entry.