



Full wwPDB X-ray Structure Validation Report ⓘ

Nov 2, 2024 – 06:02 pm GMT

PDB ID : 1W8K
Title : Crystal structure of apical membrane antigen 1 from Plasmodium vivax
Authors : Pizarro, J.C.; Vulliez-Le Normand, B.; Chesne-Seck, M.-L.; Kocken, C.H.M.; Thomas, A.W.; Bentley, G.A.
Deposited on : 2004-09-23
Resolution : 1.80 Å(reported)

This is a Full wwPDB X-ray Structure Validation Report for a publicly released PDB entry.

We welcome your comments at validation@mail.wwpdb.org

A user guide is available at

<https://www.wwpdb.org/validation/2017/XrayValidationReportHelp>

with specific help available everywhere you see the ⓘ symbol.

The types of validation reports are described at

<http://www.wwpdb.org/validation/2017/FAQs#types>.

The following versions of software and data (see [references ⓘ](#)) were used in the production of this report:

MolProbity : 4.02b-467
Mogul : 1.8.4, CSD as541be (2020)
Xtriage (Phenix) : 1.13
EDS : 3.0
Percentile statistics : 20231227.v01 (using entries in the PDB archive December 27th 2023)
CCP4 : 9.0.003 (Gargrove)
Density-Fitness : 1.0.11
Ideal geometry (proteins) : Engh & Huber (2001)
Ideal geometry (DNA, RNA) : Parkinson et al. (1996)
Validation Pipeline (wwPDB-VP) : 2.39

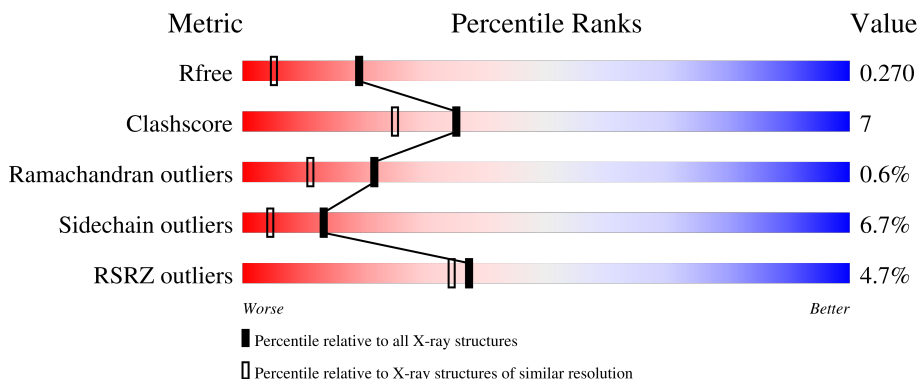
1 Overall quality at a glance

The following experimental techniques were used to determine the structure:

X-RAY DIFFRACTION

The reported resolution of this entry is 1.80 Å.

Percentile scores (ranging between 0-100) for global validation metrics of the entry are shown in the following graphic. The table shows the number of entries on which the scores are based.



Metric	Whole archive (#Entries)	Similar resolution (#Entries, resolution range(Å))
R_{free}	164625	7108 (1.80-1.80)
Clashscore	180529	8162 (1.80-1.80)
Ramachandran outliers	177936	8077 (1.80-1.80)
Sidechain outliers	177891	8076 (1.80-1.80)
RSRZ outliers	164620	7108 (1.80-1.80)

The table below summarises the geometric issues observed across the polymeric chains and their fit to the electron density. The red, orange, yellow and green segments of the lower bar indicate the fraction of residues that contain outliers for ≥ 3 , 2, 1 and 0 types of geometric quality criteria respectively. A grey segment represents the fraction of residues that are not modelled. The numeric value for each fraction is indicated below the corresponding segment, with a dot representing fractions $\leq 5\%$. The upper red bar (where present) indicates the fraction of residues that have poor fit to the electron density. The numeric value is given above the bar.

Mol	Chain	Length	Quality of chain
1	A	447	

2 Entry composition [i](#)

There are 3 unique types of molecules in this entry. The entry contains 3150 atoms, of which 0 are hydrogens and 0 are deuteriums.

In the tables below, the ZeroOcc column contains the number of atoms modelled with zero occupancy, the AltConf column contains the number of residues with at least one atom in alternate conformation and the Trace column contains the number of residues modelled with at most 2 atoms.

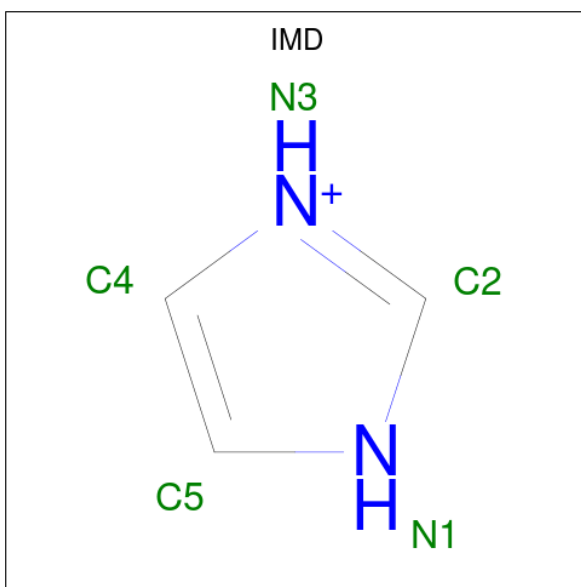
- Molecule 1 is a protein called APICAL MEMBRANE ANTIGEN 1.

Mol	Chain	Residues	Atoms					ZeroOcc	AltConf	Trace
			Total	C	N	O	S			
1	A	362	2932	1844	506	559	23	0	0	0

There are 5 discrepancies between the modelled and reference sequences:

Chain	Residue	Modelled	Actual	Comment	Reference
A	52	SER	GLY	conflict	UNP Q9TY14
A	178	ASN	SER	engineered mutation	UNP Q9TY14
A	226	ASP	ASN	engineered mutation	UNP Q9TY14
A	441	GLN	ASN	engineered mutation	UNP Q9TY14
A	472	ASP	ASN	conflict	UNP Q9TY14

- Molecule 2 is IMIDAZOLE (three-letter code: IMD) (formula: $C_3H_5N_2$).



Mol	Chain	Residues	Atoms			ZeroOcc	AltConf
			Total	C	N		
2	A	1	5	3	2	0	0

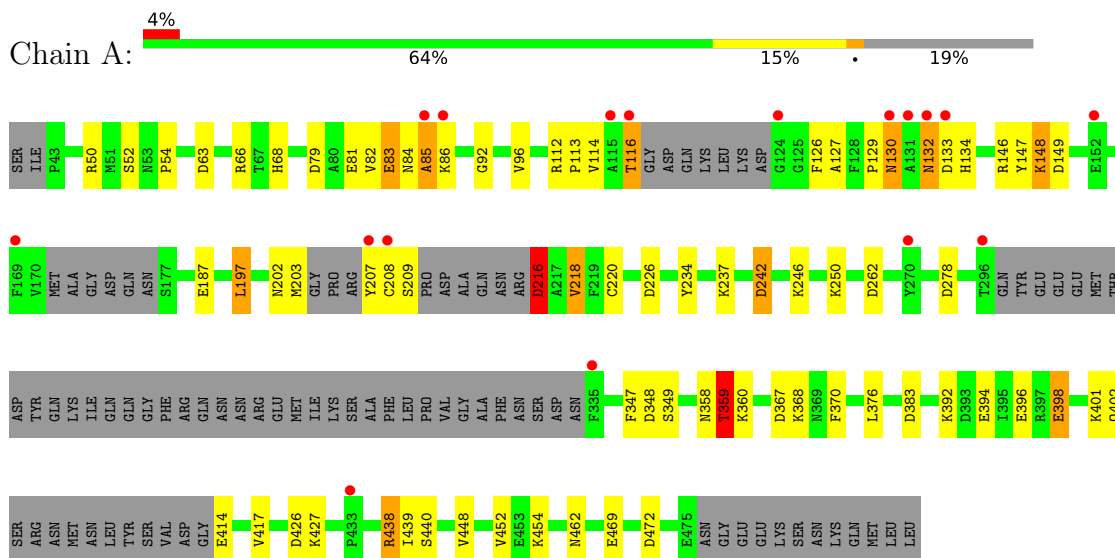
- Molecule 3 is water.

Mol	Chain	Residues	Atoms		ZeroOcc	AltConf
3	A	213	Total 213	O 213	0	0

3 Residue-property plots

These plots are drawn for all protein, RNA, DNA and oligosaccharide chains in the entry. The first graphic for a chain summarises the proportions of the various outlier classes displayed in the second graphic. The second graphic shows the sequence view annotated by issues in geometry and electron density. Residues are color-coded according to the number of geometric quality criteria for which they contain at least one outlier: green = 0, yellow = 1, orange = 2 and red = 3 or more. A red dot above a residue indicates a poor fit to the electron density ($RSRZ > 2$). Stretches of 2 or more consecutive residues without any outlier are shown as a green connector. Residues present in the sample, but not in the model, are shown in grey.

• Molecule 1: APICAL MEMBRANE ANTIGEN 1



4 Data and refinement statistics

Property	Value	Source
Space group	C 1 2 1	Depositor
Cell constants a, b, c, α , β , γ	150.03Å 53.76Å 60.29Å 90.00° 113.18° 90.00°	Depositor
Resolution (Å)	19.34 – 1.80 19.34 – 1.80	Depositor EDS
% Data completeness (in resolution range)	99.7 (19.34-1.80) 99.5 (19.34-1.80)	Depositor EDS
R_{merge}	0.06	Depositor
R_{sym}	(Not available)	Depositor
$\langle I/\sigma(I) \rangle$ ¹	1.49 (at 1.80Å)	Xtrriage
Refinement program	REFMAC 5.2.0003	Depositor
R, R_{free}	0.219 , 0.269 0.220 , 0.270	Depositor DCC
R_{free} test set	2070 reflections (5.06%)	wwPDB-VP
Wilson B-factor (Å ²)	32.5	Xtrriage
Anisotropy	0.183	Xtrriage
Bulk solvent k_{sol} (e/Å ³), B_{sol} (Å ²)	0.36 , 40.1	EDS
L-test for twinning ²	$\langle L \rangle = 0.50$, $\langle L^2 \rangle = 0.33$	Xtrriage
Estimated twinning fraction	0.025 for -h-2*1,-k,l	Xtrriage
F_o, F_c correlation	0.96	EDS
Total number of atoms	3150	wwPDB-VP
Average B, all atoms (Å ²)	41.0	wwPDB-VP

Xtrriage's analysis on translational NCS is as follows: *The largest off-origin peak in the Patterson function is 6.12% of the height of the origin peak. No significant pseudotranslation is detected.*

¹Intensities estimated from amplitudes.

²Theoretical values of $\langle |L| \rangle$, $\langle L^2 \rangle$ for acentric reflections are 0.5, 0.333 respectively for untwinned datasets, and 0.375, 0.2 for perfectly twinned datasets.

5 Model quality [i](#)

5.1 Standard geometry [i](#)

Bond lengths and bond angles in the following residue types are not validated in this section: IMD

The Z score for a bond length (or angle) is the number of standard deviations the observed value is removed from the expected value. A bond length (or angle) with $|Z| > 5$ is considered an outlier worth inspection. RMSZ is the root-mean-square of all Z scores of the bond lengths (or angles).

Mol	Chain	Bond lengths		Bond angles	
		RMSZ	# Z >5	RMSZ	# Z >5
1	A	0.94	0/2991	1.03	14/4024 (0.3%)

There are no bond length outliers.

All (14) bond angle outliers are listed below:

Mol	Chain	Res	Type	Atoms	Z	Observed(°)	Ideal(°)
1	A	278	ASP	CB-CG-OD2	8.70	126.13	118.30
1	A	242	ASP	CB-CG-OD2	7.64	125.18	118.30
1	A	63	ASP	CB-CG-OD2	6.42	124.08	118.30
1	A	197	LEU	CA-CB-CG	6.38	129.97	115.30
1	A	149	ASP	CB-CG-OD2	6.36	124.02	118.30
1	A	79	ASP	CB-CG-OD2	6.27	123.95	118.30
1	A	262	ASP	CB-CG-OD2	6.15	123.83	118.30
1	A	383	ASP	CB-CG-OD2	5.97	123.67	118.30
1	A	348	ASP	CB-CG-OD2	5.89	123.61	118.30
1	A	359	THR	OG1-CB-CG2	-5.79	96.68	110.00
1	A	472	ASP	CB-CG-OD2	5.72	123.45	118.30
1	A	216	ASP	CB-CG-OD2	5.63	123.36	118.30
1	A	133	ASP	CB-CG-OD2	5.53	123.27	118.30
1	A	367	ASP	CB-CG-OD2	5.36	123.13	118.30

There are no chirality outliers.

There are no planarity outliers.

5.2 Too-close contacts [i](#)

In the following table, the Non-H and H(model) columns list the number of non-hydrogen atoms and hydrogen atoms in the chain respectively. The H(added) column lists the number of hydrogen

atoms added and optimized by MolProbity. The Clashes column lists the number of clashes within the asymmetric unit, whereas Symm-Clashes lists symmetry-related clashes.

Mol	Chain	Non-H	H(model)	H(added)	Clashes	Symm-Clashes
1	A	2932	0	2830	42	0
2	A	5	0	5	0	0
3	A	213	0	0	10	1
All	All	3150	0	2835	42	1

The all-atom clashscore is defined as the number of clashes found per 1000 atoms (including hydrogen atoms). The all-atom clashscore for this structure is 7.

All (42) close contacts within the same asymmetric unit are listed below, sorted by their clash magnitude.

Atom-1	Atom-2	Interatomic distance (Å)	Clash overlap (Å)
1:A:216:ASP:HB3	3:A:2101:HOH:O	1.75	0.86
1:A:207:TYR:O	3:A:2100:HOH:O	1.95	0.84
1:A:438:ARG:NH2	3:A:2196:HOH:O	2.15	0.80
1:A:392:LYS:NZ	1:A:426:ASP:OD2	2.19	0.75
1:A:187:GLU:OE2	3:A:2085:HOH:O	2.08	0.72
1:A:96:VAL:HG22	1:A:376:LEU:CD2	2.23	0.68
1:A:82:VAL:O	1:A:83:GLU:HG2	1.97	0.62
1:A:113:PRO:HB3	1:A:129:PRO:HA	1.81	0.61
1:A:242:ASP:OD1	1:A:246:LYS:NZ	2.33	0.56
1:A:52:SER:HB2	3:A:2007:HOH:O	2.08	0.53
1:A:439:ILE:HD11	1:A:448:VAL:HG23	1.91	0.53
1:A:401:LYS:CG	1:A:402:GLN:N	2.72	0.53
1:A:398:GLU:O	1:A:401:LYS:HB3	2.09	0.52
1:A:114:VAL:HG23	1:A:127:ALA:O	2.10	0.52
1:A:401:LYS:HG2	1:A:402:GLN:H	1.75	0.52
1:A:50:ARG:NH2	1:A:52:SER:HB3	2.24	0.51
1:A:234:TYR:OH	3:A:2113:HOH:O	2.19	0.50
1:A:84:ASN:O	1:A:85:ALA:HB2	2.12	0.50
1:A:96:VAL:HG22	1:A:376:LEU:HD23	1.92	0.50
1:A:148:LYS:HD3	3:A:2072:HOH:O	2.12	0.50
1:A:218:VAL:HG22	1:A:220:CYS:SG	2.52	0.49
1:A:392:LYS:HA	1:A:392:LYS:HD2	1.58	0.49
1:A:146:ARG:HD3	1:A:147:TYR:CZ	2.49	0.48
1:A:132:ASN:HB2	1:A:134:HIS:HB3	1.95	0.48
1:A:202:ASN:O	1:A:203:MET:HG2	2.14	0.48
1:A:203:MET:CA	3:A:2100:HOH:O	2.61	0.47
1:A:81:GLU:HG2	1:A:86:LYS:HG2	1.96	0.47
1:A:203:MET:HA	3:A:2100:HOH:O	2.15	0.46

Continued on next page...

Continued from previous page...

Atom-1	Atom-2	Interatomic distance (Å)	Clash overlap (Å)
1:A:250:LYS:HG2	3:A:2121:HOH:O	2.16	0.46
1:A:392:LYS:HE2	1:A:396:GLU:OE2	2.16	0.46
1:A:359:THR:HG21	1:A:462:ASN:CB	2.46	0.45
1:A:401:LYS:NZ	1:A:417:VAL:H	2.15	0.45
1:A:126:PHE:HA	1:A:197:LEU:HG	1.99	0.45
1:A:452:VAL:CG1	1:A:454:LYS:HE3	2.47	0.43
1:A:84:ASN:O	1:A:85:ALA:CB	2.68	0.41
1:A:454:LYS:HD3	1:A:454:LYS:HA	1.81	0.41
1:A:54:PRO:HB3	1:A:394:GLU:HG3	2.03	0.41
1:A:439:ILE:HD11	1:A:448:VAL:CG2	2.50	0.41
1:A:116:THR:HG21	1:A:130:ASN:OD1	2.21	0.41
1:A:68:HIS:CE1	1:A:92:GLY:HA3	2.56	0.40
1:A:226:ASP:OD1	1:A:226:ASP:C	2.58	0.40
1:A:347:PHE:O	1:A:370:PHE:HA	2.21	0.40

All (1) symmetry-related close contacts are listed below. The label for Atom-2 includes the symmetry operator and encoded unit-cell translations to be applied.

Atom-1	Atom-2	Interatomic distance (Å)	Clash overlap (Å)
3:A:2173:HOH:O	3:A:2204:HOH:O[4_545]	2.07	0.13

5.3 Torsion angles [i](#)

5.3.1 Protein backbone [i](#)

In the following table, the Percentiles column shows the percent Ramachandran outliers of the chain as a percentile score with respect to all X-ray entries followed by that with respect to entries of similar resolution.

The Analysed column shows the number of residues for which the backbone conformation was analysed, and the total number of residues.

Mol	Chain	Analysed	Favoured	Allowed	Outliers	Percentiles
1	A	348/447 (78%)	325 (93%)	21 (6%)	2 (1%)	22 11

All (2) Ramachandran outliers are listed below:

Mol	Chain	Res	Type
1	A	85	ALA
1	A	130	ASN

5.3.2 Protein sidechains [i](#)

In the following table, the Percentiles column shows the percent sidechain outliers of the chain as a percentile score with respect to all X-ray entries followed by that with respect to entries of similar resolution.

The Analysed column shows the number of residues for which the sidechain conformation was analysed, and the total number of residues.

Mol	Chain	Analysed	Rotameric	Outliers	Percentiles
1	A	327/401 (82%)	305 (93%)	22 (7%)	13 4

All (22) residues with a non-rotameric sidechain are listed below:

Mol	Chain	Res	Type
1	A	66	ARG
1	A	83	GLU
1	A	112	ARG
1	A	116	THR
1	A	132	ASN
1	A	148	LYS
1	A	208	CYS
1	A	209	SER
1	A	216	ASP
1	A	218	VAL
1	A	237	LYS
1	A	349	SER
1	A	358	ASN
1	A	359	THR
1	A	360	LYS
1	A	368	LYS
1	A	398	GLU
1	A	414	GLU
1	A	427	LYS
1	A	438	ARG
1	A	440	SER
1	A	469	GLU

Sometimes sidechains can be flipped to improve hydrogen bonding and reduce clashes. All (3) such sidechains are listed below:

Mol	Chain	Res	Type
1	A	142	ASN
1	A	358	ASN
1	A	445	ASN

5.3.3 RNA [i](#)

There are no RNA molecules in this entry.

5.4 Non-standard residues in protein, DNA, RNA chains [i](#)

There are no non-standard protein/DNA/RNA residues in this entry.

5.5 Carbohydrates [i](#)

There are no oligosaccharides in this entry.

5.6 Ligand geometry [i](#)

1 ligand is modelled in this entry.

In the following table, the Counts columns list the number of bonds (or angles) for which Mogul statistics could be retrieved, the number of bonds (or angles) that are observed in the model and the number of bonds (or angles) that are defined in the Chemical Component Dictionary. The Link column lists molecule types, if any, to which the group is linked. The Z score for a bond length (or angle) is the number of standard deviations the observed value is removed from the expected value. A bond length (or angle) with $|Z| > 2$ is considered an outlier worth inspection. RMSZ is the root-mean-square of all Z scores of the bond lengths (or angles).

Mol	Type	Chain	Res	Link	Bond lengths			Bond angles		
					Counts	RMSZ	# Z > 2	Counts	RMSZ	# Z > 2
2	IMD	A	1476	-	3,5,5	0.79	0	4,5,5	1.36	1 (25%)

In the following table, the Chirals column lists the number of chiral outliers, the number of chiral centers analysed, the number of these observed in the model and the number defined in the Chemical Component Dictionary. Similar counts are reported in the Torsion and Rings columns. '-' means no outliers of that kind were identified.

Mol	Type	Chain	Res	Link	Chirals	Torsions	Rings
2	IMD	A	1476	-	-	-	0/1/1/1

There are no bond length outliers.

All (1) bond angle outliers are listed below:

Mol	Chain	Res	Type	Atoms	Z	Observed(°)	Ideal(°)
2	A	1476	IMD	C4-N3-C2	2.37	113.07	105.91

There are no chirality outliers.

There are no torsion outliers.

There are no ring outliers.

No monomer is involved in short contacts.

5.7 Other polymers

There are no such residues in this entry.

5.8 Polymer linkage issues

There are no chain breaks in this entry.

6 Fit of model and data [i](#)

6.1 Protein, DNA and RNA chains [i](#)

In the following table, the column labelled ‘#RSRZ> 2’ contains the number (and percentage) of RSRZ outliers, followed by percent RSRZ outliers for the chain as percentile scores relative to all X-ray entries and entries of similar resolution. The OWAB column contains the minimum, median, 95th percentile and maximum values of the occupancy-weighted average B-factor per residue. The column labelled ‘Q< 0.9’ lists the number of (and percentage) of residues with an average occupancy less than 0.9.

Mol	Chain	Analysed	<RSRZ>	#RSRZ>2	OWAB(Å ²)	Q<0.9
1	A	362/447 (80%)	0.16	17 (4%) 37 34	22, 37, 70, 86	0

All (17) RSRZ outliers are listed below:

Mol	Chain	Res	Type	RSRZ
1	A	207	TYR	5.6
1	A	133	ASP	4.1
1	A	131	ALA	3.9
1	A	85	ALA	3.8
1	A	335	PHE	3.5
1	A	152	GLU	2.9
1	A	132	ASN	2.8
1	A	296	THR	2.4
1	A	86	LYS	2.4
1	A	116	THR	2.3
1	A	115	ALA	2.2
1	A	130	ASN	2.2
1	A	169	PHE	2.2
1	A	124	GLY	2.2
1	A	270	TYR	2.1
1	A	208	CYS	2.1
1	A	433	PRO	2.0

6.2 Non-standard residues in protein, DNA, RNA chains [i](#)

There are no non-standard protein/DNA/RNA residues in this entry.

6.3 Carbohydrates [i](#)

There are no monosaccharides in this entry.

6.4 Ligands [i](#)

In the following table, the Atoms column lists the number of modelled atoms in the group and the number defined in the chemical component dictionary. The B-factors column lists the minimum, median, 95th percentile and maximum values of B factors of atoms in the group. The column labelled 'Q< 0.9' lists the number of atoms with occupancy less than 0.9.

Mol	Type	Chain	Res	Atoms	RSCC	RSR	B-factors(\AA^2)	Q<0.9
2	IMD	A	1476	5/5	0.98	0.04	18,19,25,29	0

6.5 Other polymers [i](#)

There are no such residues in this entry.