



Full wwPDB X-ray Structure Validation Report ⓘ

Oct 17, 2023 – 11:14 AM EDT

PDB ID : 1V3D
Title : Structure of the hemagglutinin-neuraminidase from human parainfluenza virus type III: complex with NEU5AC2EN
Authors : Lawrence, M.C.; Borg, N.A.; Streltsov, V.A.; Pilling, P.A.; Epa, V.C.; Varghese, J.N.; McKimm-Breschkin, J.L.; Colman, P.M.
Deposited on : 2003-10-30
Resolution : 2.28 Å(reported)

This is a Full wwPDB X-ray Structure Validation Report for a publicly released PDB entry.

We welcome your comments at validation@mail.wwpdb.org

A user guide is available at

<https://www.wwpdb.org/validation/2017/XrayValidationReportHelp>

with specific help available everywhere you see the ⓘ symbol.

The types of validation reports are described at

<http://www.wwpdb.org/validation/2017/FAQs#types>.

The following versions of software and data (see [references ⓘ](#)) were used in the production of this report:

MolProbity : 4.02b-467
Mogul : 1.8.5 (274361), CSD as541be (2020)
Xtriage (Phenix) : 1.13
EDS : 2.36
buster-report : 1.1.7 (2018)
Percentile statistics : 20191225.v01 (using entries in the PDB archive December 25th 2019)
Refmac : 5.8.0158
CCP4 : 7.0.044 (Gargrove)
Ideal geometry (proteins) : Engh & Huber (2001)
Ideal geometry (DNA, RNA) : Parkinson et al. (1996)
Validation Pipeline (wwPDB-VP) : 2.36

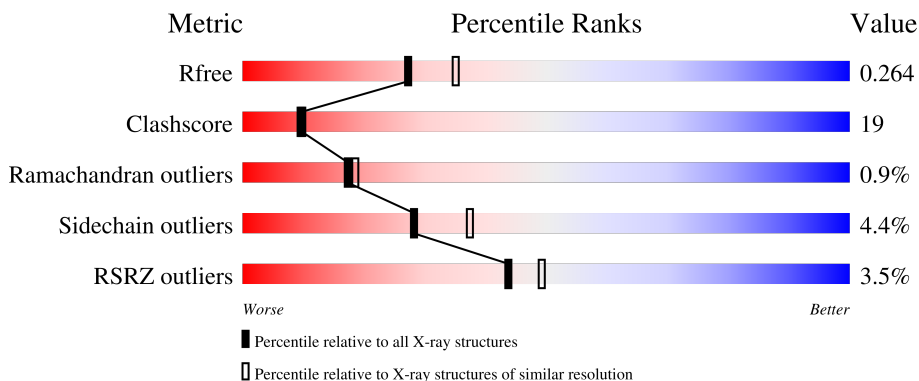
1 Overall quality at a glance

The following experimental techniques were used to determine the structure:

X-RAY DIFFRACTION

The reported resolution of this entry is 2.28 Å.

Percentile scores (ranging between 0-100) for global validation metrics of the entry are shown in the following graphic. The table shows the number of entries on which the scores are based.



Metric	Whole archive (#Entries)	Similar resolution (#Entries, resolution range(Å))
R_{free}	130704	6980 (2.30-2.26)
Clashscore	141614	7711 (2.30-2.26)
Ramachandran outliers	138981	7597 (2.30-2.26)
Sidechain outliers	138945	7598 (2.30-2.26)
RSRZ outliers	127900	6849 (2.30-2.26)

The table below summarises the geometric issues observed across the polymeric chains and their fit to the electron density. The red, orange, yellow and green segments of the lower bar indicate the fraction of residues that contain outliers for ≥ 3 , 2, 1 and 0 types of geometric quality criteria respectively. A grey segment represents the fraction of residues that are not modelled. The numeric value for each fraction is indicated below the corresponding segment, with a dot representing fractions $\leq 5\%$. The upper red bar (where present) indicates the fraction of residues that have poor fit to the electron density. The numeric value is given above the bar.

Mol	Chain	Length	Quality of chain
1	A	431	
1	B	431	
2	C	2	
2	D	2	

The following table lists non-polymeric compounds, carbohydrate monomers and non-standard residues in protein, DNA, RNA chains that are outliers for geometric or electron-density-fit criteria:

Mol	Type	Chain	Res	Chirality	Geometry	Clashes	Electron density
2	NAG	D	1	X	-	-	-

2 Entry composition [i](#)

There are 7 unique types of molecules in this entry. The entry contains 7647 atoms, of which 0 are hydrogens and 0 are deuteriums.

In the tables below, the ZeroOcc column contains the number of atoms modelled with zero occupancy, the AltConf column contains the number of residues with at least one atom in alternate conformation and the Trace column contains the number of residues modelled with at most 2 atoms.

- Molecule 1 is a protein called hemagglutinin-neuraminidase glycoprotein.

Mol	Chain	Residues	Atoms					ZeroOcc	AltConf	Trace
			Total	C	N	O	S			
1	A	431	3383	2142	581	640	20	0	1	0
1	B	431	3383	2142	581	640	20	0	1	0

- Molecule 2 is an oligosaccharide called 2-acetamido-2-deoxy-beta-D-glucopyranose-(1-4)-2-acetamido-2-deoxy-beta-D-glucopyranose.



Mol	Chain	Residues	Atoms				ZeroOcc	AltConf	Trace
			Total	C	N	O			
2	C	2	28	16	2	10	0	0	0
2	D	2	28	16	2	10	0	0	0

- Molecule 3 is 2-acetamido-2-deoxy-beta-D-glucopyranose (three-letter code: NAG) (formula: C₈H₁₅NO₆).



Mol	Chain	Residues	Atoms				ZeroOcc	AltConf
3	A	1	Total	C	N	O	0	0
			14	8	1	5		
3	A	1	Total	C	N	O	0	0
			14	8	1	5		
3	B	1	Total	C	N	O	0	0
			14	8	1	5		
3	B	1	Total	C	N	O	0	0
			14	8	1	5		

- Molecule 4 is CALCIUM ION (three-letter code: CA) (formula: Ca).

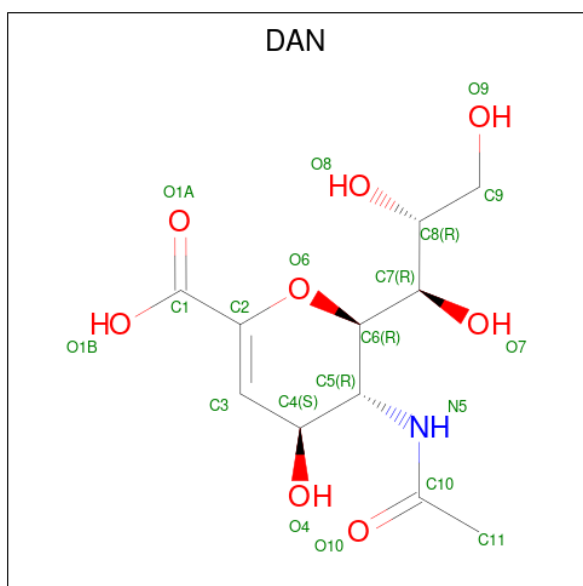
Mol	Chain	Residues	Atoms		ZeroOcc	AltConf
4	A	1	Total	Ca	0	0
			1	1		
4	B	1	Total	Ca	0	0
			1	1		

- Molecule 5 is SULFATE ION (three-letter code: SO4) (formula: O₄S).



Mol	Chain	Residues	Atoms			ZeroOcc	AltConf
5	A	1	Total	O	S	0	0
			5	4	1		
5	B	1	Total	O	S	0	0
			5	4	1		

- Molecule 6 is 2-DEOXY-2,3-DEHYDRO-N-ACETYL-NEURAMINIC ACID (three-letter code: DAN) (formula: $C_{11}H_{17}NO_8$).



Mol	Chain	Residues	Atoms				ZeroOcc	AltConf
6	A	1	Total	C	N	O	0	0
			20	11	1	8		

Continued on next page...

Continued from previous page...

Mol	Chain	Residues	Atoms				ZeroOcc	AltConf
			Total	C	N	O		
6	B	1	20	11	1	8	0	0

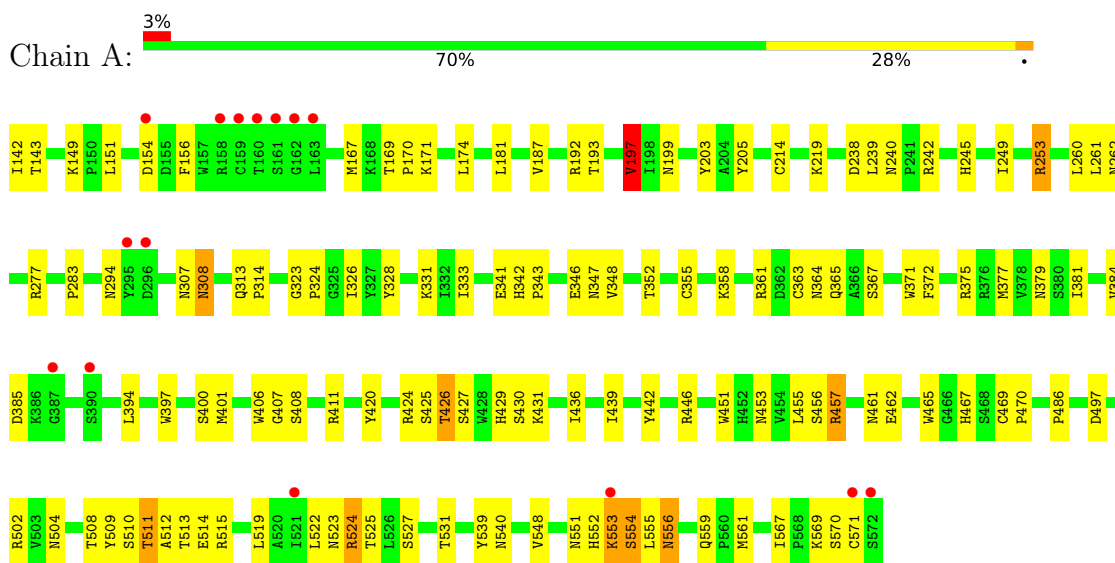
- Molecule 7 is water.

Mol	Chain	Residues	Atoms		ZeroOcc	AltConf
7	A	341	Total	O	0	0
			341	341		
7	B	376	Total	O	0	0
			376	376		

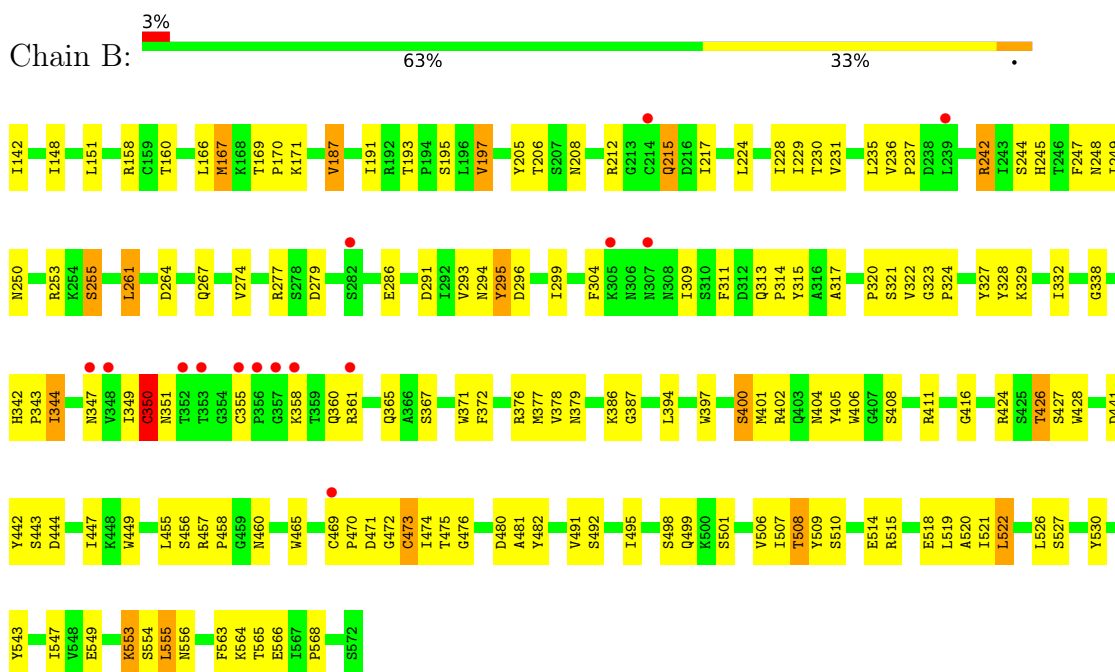
3 Residue-property plots [i](#)

These plots are drawn for all protein, RNA, DNA and oligosaccharide chains in the entry. The first graphic for a chain summarises the proportions of the various outlier classes displayed in the second graphic. The second graphic shows the sequence view annotated by issues in geometry and electron density. Residues are color-coded according to the number of geometric quality criteria for which they contain at least one outlier: green = 0, yellow = 1, orange = 2 and red = 3 or more. A red dot above a residue indicates a poor fit to the electron density ($RSRZ > 2$). Stretches of 2 or more consecutive residues without any outlier are shown as a green connector. Residues present in the sample, but not in the model, are shown in grey.

- Molecule 1: hemagglutinin-neuraminidase glycoprotein



- Molecule 1: hemagglutinin-neuraminidase glycoprotein




- Molecule 2: 2-acetamido-2-deoxy-beta-D-glucopyranose-(1-4)-2-acetamido-2-deoxy-beta-D-glucopyranose

Chain C:  50% 50%

MAG1
MAG2

- Molecule 2: 2-acetamido-2-deoxy-beta-D-glucopyranose-(1-4)-2-acetamido-2-deoxy-beta-D-glucopyranose

Chain D:  50% 50%

MAG1
MAG2

4 Data and refinement statistics

Property	Value	Source
Space group	P 62 2 2	Depositor
Cell constants a, b, c, α , β , γ	219.00Å 219.00Å 109.81Å 90.00° 90.00° 120.00°	Depositor
Resolution (Å)	41.39 – 2.28 49.08 – 2.30	Depositor EDS
% Data completeness (in resolution range)	84.7 (41.39-2.28) 84.8 (49.08-2.30)	Depositor EDS
R_{merge}	(Not available)	Depositor
R_{sym}	(Not available)	Depositor
$\langle I/\sigma(I) \rangle$ ¹	1.39 (at 2.29Å)	Xtrriage
Refinement program	CNS 1.1	Depositor
R, R_{free}	0.213 , 0.270 0.205 , 0.264	Depositor DCC
R_{free} test set	6583 reflections (10.13%)	wwPDB-VP
Wilson B-factor (Å ²)	32.2	Xtrriage
Anisotropy	0.271	Xtrriage
Bulk solvent k_{sol} (e/Å ³), B_{sol} (Å ²)	0.37 , 70.1	EDS
L-test for twinning ²	$\langle L \rangle = 0.49$, $\langle L^2 \rangle = 0.33$	Xtrriage
Estimated twinning fraction	No twinning to report.	Xtrriage
F_o, F_c correlation	0.94	EDS
Total number of atoms	7647	wwPDB-VP
Average B, all atoms (Å ²)	40.0	wwPDB-VP

Xtrriage's analysis on translational NCS is as follows: *The largest off-origin peak in the Patterson function is 2.01% of the height of the origin peak. No significant pseudotranslation is detected.*

¹Intensities estimated from amplitudes.

²Theoretical values of $\langle |L| \rangle$, $\langle L^2 \rangle$ for acentric reflections are 0.5, 0.333 respectively for untwinned datasets, and 0.375, 0.2 for perfectly twinned datasets.

5 Model quality [i](#)

5.1 Standard geometry [i](#)

Bond lengths and bond angles in the following residue types are not validated in this section: DAN, SO4, CA, NAG

The Z score for a bond length (or angle) is the number of standard deviations the observed value is removed from the expected value. A bond length (or angle) with $|Z| > 5$ is considered an outlier worth inspection. RMSZ is the root-mean-square of all Z scores of the bond lengths (or angles).

Mol	Chain	Bond lengths		Bond angles	
		RMSZ	# Z >5	RMSZ	# Z >5
1	A	0.44	0/3469	0.75	1/4730 (0.0%)
1	B	0.43	0/3469	0.74	0/4730
All	All	0.44	0/6938	0.75	1/9460 (0.0%)

There are no bond length outliers.

All (1) bond angle outliers are listed below:

Mol	Chain	Res	Type	Atoms	Z	Observed(°)	Ideal(°)
1	A	197	VAL	CB-CA-C	-5.36	101.21	111.40

There are no chirality outliers.

There are no planarity outliers.

5.2 Too-close contacts [i](#)

In the following table, the Non-H and H(model) columns list the number of non-hydrogen atoms and hydrogen atoms in the chain respectively. The H(added) column lists the number of hydrogen atoms added and optimized by MolProbity. The Clashes column lists the number of clashes within the asymmetric unit, whereas Symm-Clashes lists symmetry-related clashes.

Mol	Chain	Non-H	H(model)	H(added)	Clashes	Symm-Clashes
1	A	3383	0	3349	126	0
1	B	3383	0	3348	137	0
2	C	28	0	25	1	0
2	D	28	0	25	5	0
3	A	28	0	26	4	0
3	B	28	0	26	0	0
4	A	1	0	0	0	0
4	B	1	0	0	0	0

Continued on next page...

Continued from previous page...

Mol	Chain	Non-H	H(model)	H(added)	Clashes	Symm-Clashes
5	A	5	0	0	0	0
5	B	5	0	0	0	0
6	A	20	0	16	0	0
6	B	20	0	16	0	0
7	A	341	0	0	25	0
7	B	376	0	0	11	0
All	All	7647	0	6831	264	0

The all-atom clashscore is defined as the number of clashes found per 1000 atoms (including hydrogen atoms). The all-atom clashscore for this structure is 19.

All (264) close contacts within the same asymmetric unit are listed below, sorted by their clash magnitude.

Atom-1	Atom-2	Interatomic distance (Å)	Clash overlap (Å)
1:A:524:ARG:H	1:A:524:ARG:HD2	1.19	1.03
1:B:351:ASN:HB2	2:D:1:NAG:H82	1.47	0.95
1:B:481:ALA:HB1	1:B:491:VAL:HG21	1.47	0.94
1:A:524:ARG:HH12	3:A:5231:NAG:H82	1.35	0.91
1:A:253:ARG:HG2	1:A:253:ARG:HH11	1.37	0.89
1:A:424:ARG:HG2	1:A:426:THR:HG22	1.55	0.89
1:A:524:ARG:NH1	3:A:5231:NAG:H82	1.87	0.88
1:A:245[A]:HIS:HB2	7:A:5554:HOH:O	1.80	0.82
1:A:511:THR:HG22	1:A:513:THR:H	1.45	0.81
1:A:430:SER:HA	1:A:457:ARG:NH1	1.95	0.81
1:A:245[B]:HIS:HB2	7:A:5554:HOH:O	1.82	0.80
2:D:1:NAG:H62	2:D:2:NAG:H83	1.65	0.79
1:B:248:ASN:HD21	1:B:250:ASN:HB2	1.48	0.78
1:B:187:VAL:HG22	1:B:555:LEU:CD2	2.12	0.78
1:B:197:VAL:HG13	1:B:324:PRO:HB3	1.64	0.77
1:B:481:ALA:HB1	1:B:491:VAL:CG2	2.14	0.76
1:A:524:ARG:H	1:A:524:ARG:CD	1.90	0.75
1:B:294:ASN:HB2	1:B:296:ASP:OD1	1.87	0.74
1:A:554:SER:HB3	1:B:553:LYS:HD2	1.70	0.74
1:A:253:ARG:HD2	7:A:5261:HOH:O	1.88	0.73
1:B:424:ARG:HG2	1:B:426:THR:HG22	1.71	0.72
1:B:508:THR:HB	1:B:518:GLU:HB3	1.70	0.72
1:A:167:MET:CE	1:A:170:PRO:HD2	2.21	0.71
1:A:169:THR:HG23	1:A:170:PRO:HA	1.72	0.70
1:A:524:ARG:HD2	1:A:524:ARG:N	2.01	0.70
1:B:349:ILE:O	1:B:350:CYS:HB3	1.92	0.70
1:A:502:ARG:HD3	7:A:5267:HOH:O	1.91	0.69

Continued on next page...

Continued from previous page...

Atom-1	Atom-2	Interatomic distance (Å)	Clash overlap (Å)
1:B:482:TYR:O	1:B:491:VAL:HG23	1.93	0.67
1:B:510:SER:HB3	1:B:515:ARG:HA	1.77	0.67
1:B:495:ILE:HD11	1:B:515:ARG:NH1	2.11	0.66
1:A:511:THR:CG2	1:A:513:THR:H	2.08	0.65
1:B:293:VAL:HG22	1:B:299:ILE:HG12	1.79	0.65
1:A:446:ARG:HD2	7:A:5373:HOH:O	1.96	0.65
1:B:142:ILE:HG22	7:B:5400:HOH:O	1.96	0.65
1:B:242:ARG:HA	1:B:242:ARG:HH11	1.62	0.64
1:B:195:SER:HB3	1:B:206:THR:HG22	1.79	0.64
1:B:197:VAL:HG13	1:B:324:PRO:CB	2.27	0.64
1:A:277:ARG:HD2	1:A:371:TRP:CZ2	2.33	0.64
1:B:187:VAL:HG22	1:B:555:LEU:HD21	1.79	0.63
1:A:167:MET:HE3	1:A:170:PRO:HD2	1.79	0.63
1:B:367:SER:HB2	1:B:401:MET:HE1	1.81	0.63
1:A:214:CYS:HB3	7:A:5547:HOH:O	1.99	0.63
1:B:167:MET:CE	1:B:170:PRO:HD2	2.29	0.62
1:A:462:GLU:CD	1:A:462:GLU:H	2.00	0.62
1:A:331:LYS:HE3	1:A:385:ASP:OD2	1.99	0.62
1:B:361:ARG:HD2	7:B:5569:HOH:O	1.99	0.62
1:B:314:PRO:HD2	7:B:5368:HOH:O	2.00	0.61
1:A:352:THR:O	1:A:355:CYS:HB2	2.01	0.61
1:B:212:ARG:HB2	1:B:212:ARG:HH11	1.66	0.61
1:B:510:SER:CB	1:B:515:ARG:HA	2.31	0.61
1:B:148:ILE:HD13	1:B:229:ILE:HG22	1.82	0.60
1:A:253:ARG:HG2	1:A:253:ARG:NH1	2.09	0.60
1:B:426:THR:HG21	7:B:5256:HOH:O	1.99	0.60
1:A:253:ARG:HH11	1:A:253:ARG:CG	2.12	0.60
1:A:328:TYR:CD2	1:A:439:ILE:HD11	2.37	0.60
7:B:5445:HOH:O	2:D:2:NAG:H62	2.01	0.60
1:B:311:PHE:HB3	1:B:313:GLN:O	2.01	0.60
1:A:308:ASN:OD1	3:A:3081:NAG:N2	2.35	0.59
1:A:192:ARG:NH2	7:A:5546:HOH:O	2.35	0.59
1:A:511:THR:HG22	1:A:513:THR:N	2.18	0.59
1:B:248:ASN:ND2	1:B:250:ASN:HB2	2.18	0.58
1:A:377:MET:HG3	1:A:406:TRP:CE2	2.39	0.58
1:A:553:LYS:HB2	1:B:554:SER:OG	2.04	0.58
1:B:481:ALA:CB	1:B:491:VAL:HG21	2.29	0.57
1:A:497:ASP:CG	1:A:515:ARG:HH22	2.08	0.57
1:A:461:ASN:HB2	7:A:5451:HOH:O	2.04	0.56
1:B:171:LYS:NZ	1:B:519:LEU:HA	2.20	0.56
1:A:174:LEU:HG	1:A:519:LEU:HD21	1.87	0.56

Continued on next page...

Continued from previous page...

Atom-1	Atom-2	Interatomic distance (Å)	Clash overlap (Å)
1:A:187:VAL:HG22	1:A:555:LEU:HD22	1.85	0.56
1:B:441:ASP:OD2	1:B:444:ASP:HB3	2.05	0.56
1:B:495:ILE:HD11	1:B:515:ARG:HH11	1.68	0.56
1:B:367:SER:HB2	1:B:401:MET:CE	2.35	0.56
1:B:311:PHE:HD2	1:B:315:TYR:CD1	2.22	0.56
1:A:377:MET:HG3	1:A:406:TRP:CZ2	2.41	0.56
1:B:521:ILE:HD13	1:B:563:PHE:CZ	2.41	0.55
1:B:167:MET:HE3	1:B:170:PRO:HD2	1.88	0.55
1:A:527:SER:HB2	1:A:551:ASN:HB3	1.87	0.55
1:A:527:SER:HB2	1:A:551:ASN:CB	2.37	0.55
1:B:236:VAL:HG22	1:B:237:PRO:HD2	1.89	0.55
1:B:397:TRP:CD2	1:B:442:TYR:HB3	2.42	0.55
1:B:456:SER:HB3	1:B:465:TRP:CD2	2.42	0.55
1:A:552:HIS:CE1	7:A:5510:HOH:O	2.60	0.55
1:B:455:LEU:HD22	1:B:495:ILE:HG21	1.90	0.54
1:A:451:TRP:CH2	1:A:453:ASN:HB2	2.43	0.54
1:A:167:MET:HE1	1:A:170:PRO:HD2	1.90	0.54
1:A:511:THR:HG23	1:A:512:ALA:N	2.22	0.54
1:B:377:MET:HG3	1:B:406:TRP:CZ2	2.43	0.54
1:A:372:PHE:O	1:A:375:ARG:HG2	2.08	0.54
1:B:255:SER:O	1:B:320:PRO:HB2	2.08	0.54
1:A:355:CYS:HB3	1:A:358:LYS:HG3	1.90	0.54
1:A:253:ARG:CD	7:A:5261:HOH:O	2.51	0.53
1:B:379:ASN:HB2	1:B:404:ASN:ND2	2.23	0.53
1:B:347:ASN:HB3	1:B:360:GLN:OE1	2.08	0.53
1:A:539:TYR:O	1:A:540:ASN:HB2	2.09	0.53
2:C:1:NAG:H62	2:C:2:NAG:H82	1.89	0.53
1:A:462:GLU:CD	1:A:462:GLU:N	2.62	0.52
1:A:511:THR:CG2	1:A:512:ALA:N	2.73	0.52
1:A:307:ASN:ND2	7:A:5476:HOH:O	2.38	0.52
1:A:554:SER:HB3	1:B:553:LYS:CD	2.39	0.52
1:A:348:VAL:HG12	1:A:401:MET:HB3	1.90	0.52
1:B:317:ALA:O	1:B:338:GLY:HA3	2.10	0.52
1:A:561:MET:HE1	7:A:5510:HOH:O	2.08	0.52
1:A:283:PRO:HB3	1:A:341:GLU:CD	2.29	0.52
1:B:261:LEU:HB2	1:B:332:ILE:HD11	1.90	0.52
1:B:506:VAL:HG12	1:B:508:THR:HG22	1.92	0.51
1:A:397:TRP:CD2	1:A:442:TYR:HB3	2.45	0.51
1:B:309:ILE:HB	1:B:311:PHE:CE1	2.45	0.51
1:A:430:SER:HA	1:A:457:ARG:HH11	1.75	0.51
1:B:274:VAL:HG21	7:B:5584:HOH:O	2.11	0.51

Continued on next page...

Continued from previous page...

Atom-1	Atom-2	Interatomic distance (Å)	Clash overlap (Å)
1:B:377:MET:HG3	1:B:406:TRP:CE2	2.45	0.51
1:B:215:GLN:O	1:B:217:ILE:HG23	2.11	0.51
1:B:212:ARG:HB2	1:B:212:ARG:NH1	2.26	0.51
1:A:342:HIS:HD2	7:A:5342:HOH:O	1.93	0.51
1:B:427:SER:OG	1:B:428:TRP:N	2.40	0.51
1:B:491:VAL:HG22	1:B:492:SER:N	2.26	0.51
1:A:142:ILE:HG23	1:A:143:THR:N	2.27	0.50
1:A:430:SER:HB2	1:A:467:HIS:O	2.11	0.50
1:B:224:LEU:O	1:B:244:SER:HA	2.11	0.50
1:A:192:ARG:CZ	7:A:5546:HOH:O	2.60	0.50
1:B:495:ILE:CD1	1:B:515:ARG:HH11	2.24	0.50
1:A:313:GLN:HB2	1:A:314:PRO:HD2	1.92	0.50
1:A:363:CYS:SG	1:A:470:PRO:HG3	2.51	0.50
1:A:408:SER:CB	1:A:426:THR:HG21	2.41	0.50
1:B:355:CYS:HB3	1:B:358:LYS:HG3	1.92	0.50
2:D:1:NAG:H62	2:D:2:NAG:C8	2.39	0.50
1:A:253:ARG:NH1	1:A:253:ARG:CG	2.73	0.50
1:B:167:MET:HE1	1:B:170:PRO:HD2	1.93	0.50
1:A:511:THR:HG22	1:A:514:GLU:H	1.77	0.49
1:B:499:GLN:HA	1:B:499:GLN:NE2	2.27	0.49
1:B:378:VAL:HA	7:B:5266:HOH:O	2.12	0.49
1:A:531:THR:HG22	1:A:548:VAL:HG13	1.94	0.49
1:B:522:LEU:HD23	1:B:526:LEU:HB2	1.94	0.49
1:A:400:SER:HA	7:A:5352:HOH:O	2.12	0.49
1:A:367:SER:HB2	1:A:401:MET:CE	2.42	0.49
1:A:347:ASN:ND2	1:A:364:ASN:HD21	2.11	0.49
1:A:569:LYS:HG2	1:A:570:SER:N	2.26	0.48
1:B:242:ARG:HG2	1:B:295:TYR:OH	2.13	0.48
1:B:554:SER:O	1:B:555:LEU:HG	2.13	0.48
1:B:323:GLY:HA3	1:B:411:ARG:HB3	1.94	0.48
1:B:543:TYR:CE2	1:B:566:GLU:HG3	2.48	0.48
1:B:400:SER:HG	1:B:402:ARG:HG3	1.79	0.48
1:B:465:TRP:HH2	1:B:495:ILE:HD12	1.79	0.48
1:B:555:LEU:N	1:B:555:LEU:HD12	2.29	0.48
1:A:451:TRP:CZ2	1:A:453:ASN:HB2	2.49	0.47
1:B:261:LEU:HD13	1:B:327:TYR:CE2	2.49	0.47
1:B:151:LEU:C	1:B:151:LEU:HD23	2.34	0.47
1:B:527:SER:H	1:B:553:LYS:HZ1	1.60	0.47
1:B:475:THR:OG1	1:B:476:GLY:N	2.44	0.47
1:B:279:ASP:OD1	1:B:286:GLU:HG2	2.15	0.47
1:B:321:SER:O	1:B:322:VAL:HB	2.14	0.47

Continued on next page...

Continued from previous page...

Atom-1	Atom-2	Interatomic distance (Å)	Clash overlap (Å)
1:A:431:LYS:NZ	1:A:453:ASN:OD1	2.47	0.47
1:B:193:THR:HG22	1:B:530:TYR:CE1	2.50	0.47
1:B:400:SER:OG	1:B:402:ARG:HG3	2.15	0.47
1:A:219:LYS:HB2	1:A:249:ILE:HG12	1.96	0.46
1:A:551:ASN:OD1	1:A:553:LYS:N	2.48	0.46
1:B:171:LYS:HZ3	1:B:519:LEU:HA	1.79	0.46
1:B:212:ARG:NH1	1:B:212:ARG:CB	2.78	0.46
1:B:404:ASN:OD1	1:B:405:TYR:N	2.48	0.46
1:B:328:TYR:CZ	1:B:329:LYS:HE3	2.51	0.46
1:A:245[A]:HIS:HD2	7:A:5531:HOH:O	1.98	0.46
1:A:427:SER:HB3	7:A:5249:HOH:O	2.15	0.46
1:A:552:HIS:O	1:A:554:SER:N	2.49	0.46
1:A:154:ASP:OD2	1:A:486:PRO:HG3	2.16	0.45
1:B:171:LYS:NZ	1:B:518:GLU:O	2.36	0.45
1:B:480:ASP:C	1:B:480:ASP:OD1	2.55	0.45
1:A:465:TRP:CD1	1:A:465:TRP:C	2.90	0.45
1:A:553:LYS:O	1:A:554:SER:C	2.54	0.45
1:B:169:THR:HG23	1:B:170:PRO:HA	1.99	0.45
1:A:171:LYS:HE2	7:A:5277:HOH:O	2.15	0.45
1:A:456:SER:HB3	1:A:465:TRP:CE2	2.51	0.45
1:A:323:GLY:HA3	1:A:411:ARG:HB3	1.98	0.45
1:B:205:TYR:CE1	1:B:547:ILE:HD13	2.52	0.45
1:B:277:ARG:HD3	1:B:371:TRP:NE1	2.30	0.45
1:B:342:HIS:HA	1:B:343:PRO:HD3	1.72	0.45
1:B:460:ASN:HB3	7:B:5455:HOH:O	2.17	0.45
1:B:470:PRO:O	1:B:471:ASP:HB2	2.17	0.45
1:A:238:ASP:OD1	1:A:239:LEU:N	2.49	0.45
1:B:343:PRO:HA	1:B:376:ARG:NH1	2.31	0.45
1:A:504:ASN:HB2	1:A:524:ARG:HA	1.99	0.45
1:B:277:ARG:HD3	1:B:371:TRP:CD1	2.52	0.45
1:B:311:PHE:CD2	1:B:315:TYR:CD1	3.03	0.45
1:A:333:ILE:CG2	1:A:381:ILE:HG23	2.46	0.45
1:A:169:THR:HG23	1:A:170:PRO:CA	2.44	0.44
1:A:379:ASN:OD1	1:A:407:GLY:HA2	2.17	0.44
1:A:408:SER:HB3	1:A:426:THR:HG21	1.98	0.44
1:B:215:GLN:NE2	1:B:215:GLN:N	2.65	0.44
1:B:361:ARG:NH2	7:B:5513:HOH:O	2.49	0.44
1:A:308:ASN:OD1	3:A:3081:NAG:C7	2.65	0.44
1:A:331:LYS:HE3	1:A:385:ASP:CG	2.38	0.44
1:B:506:VAL:HG22	1:B:520:ALA:HA	2.00	0.44
1:B:365:GLN:HA	1:B:365:GLN:NE2	2.33	0.44

Continued on next page...

Continued from previous page...

Atom-1	Atom-2	Interatomic distance (Å)	Clash overlap (Å)
1:B:458:PRO:HB3	1:B:498:SER:O	2.17	0.44
1:A:408:SER:HB2	7:A:5316:HOH:O	2.17	0.44
1:B:166:LEU:HD13	1:B:509:TYR:HB3	2.00	0.44
1:B:400:SER:HB2	7:B:5546:HOH:O	2.17	0.44
1:A:420:TYR:CE2	1:A:436:ILE:HD11	2.53	0.43
1:B:309:ILE:HB	1:B:311:PHE:HE1	1.83	0.43
1:B:191:ILE:HA	1:B:208:ASN:O	2.18	0.43
1:B:261:LEU:C	1:B:261:LEU:HD12	2.38	0.43
1:B:261:LEU:HB3	1:B:264:ASP:HB2	2.00	0.43
1:B:236:VAL:HG22	1:B:237:PRO:CD	2.48	0.43
1:A:262:ASN:HD22	1:A:262:ASN:HA	1.68	0.43
1:A:554:SER:HB3	1:B:553:LYS:CG	2.49	0.43
1:B:379:ASN:HB2	1:B:404:ASN:HD22	1.84	0.43
1:B:408:SER:OG	1:B:426:THR:HG23	2.19	0.43
1:A:347:ASN:HD22	1:A:347:ASN:HA	1.69	0.43
1:B:554:SER:HB2	1:B:555:LEU:HD12	2.00	0.43
1:A:193:THR:HG23	7:A:5546:HOH:O	2.19	0.43
1:A:277:ARG:HD2	1:A:371:TRP:CE2	2.54	0.43
1:B:372:PHE:CE1	1:B:474:ILE:HD13	2.54	0.43
1:B:507:ILE:HG21	1:B:565:THR:HG21	2.01	0.43
1:A:384:VAL:HG22	1:A:394:LEU:CD2	2.49	0.42
2:D:1:NAG:C6	2:D:2:NAG:H83	2.44	0.42
1:B:526:LEU:HA	1:B:553:LYS:NZ	2.34	0.42
1:B:249:ILE:O	1:B:249:ILE:HG12	2.19	0.42
1:B:428:TRP:HB2	1:B:469:CYS:O	2.19	0.42
1:A:197:VAL:HG13	1:A:324:PRO:CB	2.49	0.42
1:A:511:THR:HG22	1:A:514:GLU:N	2.33	0.42
1:A:509:TYR:HE2	1:A:567:ILE:HG12	1.85	0.42
1:A:523:ASN:HB2	1:A:524:ARG:HD2	2.01	0.42
1:A:569:LYS:CG	1:A:570:SER:N	2.83	0.42
1:B:228:ILE:HG13	1:B:230:THR:HG23	2.01	0.42
1:B:231:VAL:CG1	1:B:235:LEU:HA	2.50	0.42
1:B:294:ASN:N	1:B:294:ASN:ND2	2.65	0.42
1:A:326:ILE:HD12	1:A:328:TYR:HB2	2.02	0.42
1:B:304:PHE:CE2	1:B:394:LEU:HG	2.55	0.42
1:B:167:MET:HG2	1:B:568:PRO:O	2.20	0.42
1:B:343:PRO:O	1:B:344:ILE:C	2.58	0.42
1:B:416:GLY:HA3	7:B:5517:HOH:O	2.19	0.42
1:A:192:ARG:HG3	7:A:5547:HOH:O	2.19	0.42
1:A:197:VAL:HG13	1:A:324:PRO:HB2	2.00	0.42
1:A:203:TYR:CD1	1:A:203:TYR:C	2.93	0.42

Continued on next page...

Continued from previous page...

Atom-1	Atom-2	Interatomic distance (Å)	Clash overlap (Å)
1:A:361:ARG:O	1:A:365:GLN:HG3	2.20	0.42
1:A:342:HIS:HA	1:A:343:PRO:HD2	1.92	0.41
1:A:555:LEU:O	1:A:556:ASN:HB3	2.19	0.41
1:B:245[A]:HIS:CD2	1:B:299:ILE:CD1	3.03	0.41
1:B:386:LYS:HE3	1:B:387:GLY:O	2.21	0.41
1:A:346:GLU:N	7:A:5360:HOH:O	2.52	0.41
1:A:455:LEU:HD11	1:A:510:SER:HB3	2.03	0.41
1:B:510:SER:HB2	1:B:514:GLU:O	2.21	0.41
1:A:408:SER:CB	7:A:5316:HOH:O	2.68	0.41
1:A:462:GLU:HG3	7:A:5481:HOH:O	2.20	0.41
1:B:231:VAL:HG12	1:B:235:LEU:HA	2.02	0.41
1:B:472:GLY:O	1:B:473:CYS:O	2.39	0.41
1:A:151:LEU:HD11	1:A:156:PHE:CD2	2.56	0.41
1:A:523:ASN:OD1	1:A:525:THR:HG23	2.21	0.41
1:B:294:ASN:N	1:B:294:ASN:HD22	2.19	0.41
1:B:405:TYR:O	1:B:406:TRP:C	2.58	0.41
1:B:499:GLN:HA	1:B:499:GLN:HE21	1.85	0.41
1:B:530:TYR:N	1:B:549:GLU:OE1	2.46	0.40
1:A:425:SER:HB3	1:A:429:HIS:O	2.21	0.40
1:A:430:SER:CA	1:A:457:ARG:NH1	2.77	0.40
1:A:539:TYR:O	1:A:540:ASN:CB	2.69	0.40
1:A:199:ASN:HB3	1:A:260:LEU:HD12	2.03	0.40
1:A:469:CYS:O	1:A:470:PRO:C	2.59	0.40
1:A:552:HIS:CE1	1:A:559:GLN:HB3	2.56	0.40
1:A:571:CYS:HB2	7:A:5427:HOH:O	2.21	0.40
1:B:267:GLN:HB3	1:B:291:ASP:HB2	2.03	0.40
1:B:386:LYS:HG2	1:B:387:GLY:N	2.36	0.40
1:A:181:LEU:HD22	1:A:205:TYR:CE2	2.56	0.40
1:A:408:SER:CB	1:A:426:THR:CG2	2.99	0.40
1:B:247:PHE:HB3	1:B:253:ARG:NH2	2.36	0.40
1:B:372:PHE:CD1	1:B:474:ILE:HD13	2.56	0.40
1:B:447:ILE:HG21	1:B:449:TRP:CE2	2.56	0.40

There are no symmetry-related clashes.

5.3 Torsion angles [i](#)

5.3.1 Protein backbone [i](#)

In the following table, the Percentiles column shows the percent Ramachandran outliers of the chain as a percentile score with respect to all X-ray entries followed by that with respect to entries

of similar resolution.

The Analysed column shows the number of residues for which the backbone conformation was analysed, and the total number of residues.

Mol	Chain	Analysed	Favoured	Allowed	Outliers	Percentiles	
1	A	430/431 (100%)	393 (91%)	34 (8%)	3 (1%)	22	25
1	B	430/431 (100%)	389 (90%)	36 (8%)	5 (1%)	13	12
All	All	860/862 (100%)	782 (91%)	70 (8%)	8 (1%)	17	18

All (8) Ramachandran outliers are listed below:

Mol	Chain	Res	Type
1	A	553	LYS
1	B	473	CYS
1	A	554	SER
1	B	522	LEU
1	A	522	LEU
1	B	295	TYR
1	B	350	CYS
1	B	344	ILE

5.3.2 Protein sidechains [i](#)

In the following table, the Percentiles column shows the percent sidechain outliers of the chain as a percentile score with respect to all X-ray entries followed by that with respect to entries of similar resolution.

The Analysed column shows the number of residues for which the sidechain conformation was analysed, and the total number of residues.

Mol	Chain	Analysed	Rotameric	Outliers	Percentiles	
1	A	391/390 (100%)	377 (96%)	14 (4%)	35	47
1	B	391/390 (100%)	371 (95%)	20 (5%)	24	31
All	All	782/780 (100%)	748 (96%)	34 (4%)	28	38

All (34) residues with a non-rotameric sidechain are listed below:

Mol	Chain	Res	Type
1	A	149	LYS
1	A	197	VAL
1	A	240	ASN
1	A	242	ARG

Continued on next page...

Continued from previous page...

Mol	Chain	Res	Type
1	A	253	ARG
1	A	261	LEU
1	A	294	ASN
1	A	308	ASN
1	A	426	THR
1	A	457	ARG
1	A	508	THR
1	A	511	THR
1	A	524	ARG
1	A	556	ASN
1	B	158	ARG
1	B	160	THR
1	B	167	MET
1	B	187	VAL
1	B	197	VAL
1	B	215	GLN
1	B	242	ARG
1	B	255	SER
1	B	261	LEU
1	B	350	CYS
1	B	400	SER
1	B	426	THR
1	B	443	SER
1	B	457	ARG
1	B	501	SER
1	B	508	THR
1	B	553	LYS
1	B	555	LEU
1	B	556	ASN
1	B	564	LYS

Sometimes sidechains can be flipped to improve hydrogen bonding and reduce clashes. All (22) such sidechains are listed below:

Mol	Chain	Res	Type
1	A	225	GLN
1	A	240	ASN
1	A	262	ASN
1	A	307	ASN
1	A	347	ASN
1	A	360	GLN
1	A	389	ASN
1	A	504	ASN

Continued on next page...

Continued from previous page...

Mol	Chain	Res	Type
1	A	556	ASN
1	B	215	GLN
1	B	225	GLN
1	B	240	ASN
1	B	248	ASN
1	B	250	ASN
1	B	262	ASN
1	B	294	ASN
1	B	364	ASN
1	B	365	GLN
1	B	499	GLN
1	B	504	ASN
1	B	552	HIS
1	B	556	ASN

5.3.3 RNA [i](#)

There are no RNA molecules in this entry.

5.4 Non-standard residues in protein, DNA, RNA chains [i](#)

There are no non-standard protein/DNA/RNA residues in this entry.

5.5 Carbohydrates [i](#)

4 monosaccharides are modelled in this entry.

In the following table, the Counts columns list the number of bonds (or angles) for which Mogul statistics could be retrieved, the number of bonds (or angles) that are observed in the model and the number of bonds (or angles) that are defined in the Chemical Component Dictionary. The Link column lists molecule types, if any, to which the group is linked. The Z score for a bond length (or angle) is the number of standard deviations the observed value is removed from the expected value. A bond length (or angle) with $|Z| > 2$ is considered an outlier worth inspection. RMSZ is the root-mean-square of all Z scores of the bond lengths (or angles).

Mol	Type	Chain	Res	Link	Bond lengths			Bond angles		
					Counts	RMSZ	# Z > 2	Counts	RMSZ	# Z > 2
2	NAG	C	1	2,1	14,14,15	0.67	0	17,19,21	0.72	1 (5%)
2	NAG	C	2	2	14,14,15	0.51	0	17,19,21	0.68	0
2	NAG	D	1	2,1	14,14,15	0.69	0	17,19,21	0.93	1 (5%)
2	NAG	D	2	2	14,14,15	0.59	0	17,19,21	0.82	0

In the following table, the Chirals column lists the number of chiral outliers, the number of chiral centers analysed, the number of these observed in the model and the number defined in the Chemical Component Dictionary. Similar counts are reported in the Torsion and Rings columns. '-' means no outliers of that kind were identified.

Mol	Type	Chain	Res	Link	Chirals	Torsions	Rings
2	NAG	C	1	2,1	-	4/6/23/26	0/1/1/1
2	NAG	C	2	2	-	4/6/23/26	0/1/1/1
2	NAG	D	1	2,1	1/1/5/7	4/6/23/26	0/1/1/1
2	NAG	D	2	2	-	2/6/23/26	0/1/1/1

There are no bond length outliers.

All (2) bond angle outliers are listed below:

Mol	Chain	Res	Type	Atoms	Z	Observed(°)	Ideal(°)
2	D	1	NAG	C2-N2-C7	-2.24	119.72	122.90
2	C	1	NAG	C2-N2-C7	-2.23	119.73	122.90

All (1) chirality outliers are listed below:

Mol	Chain	Res	Type	Atom
2	D	1	NAG	C1

All (14) torsion outliers are listed below:

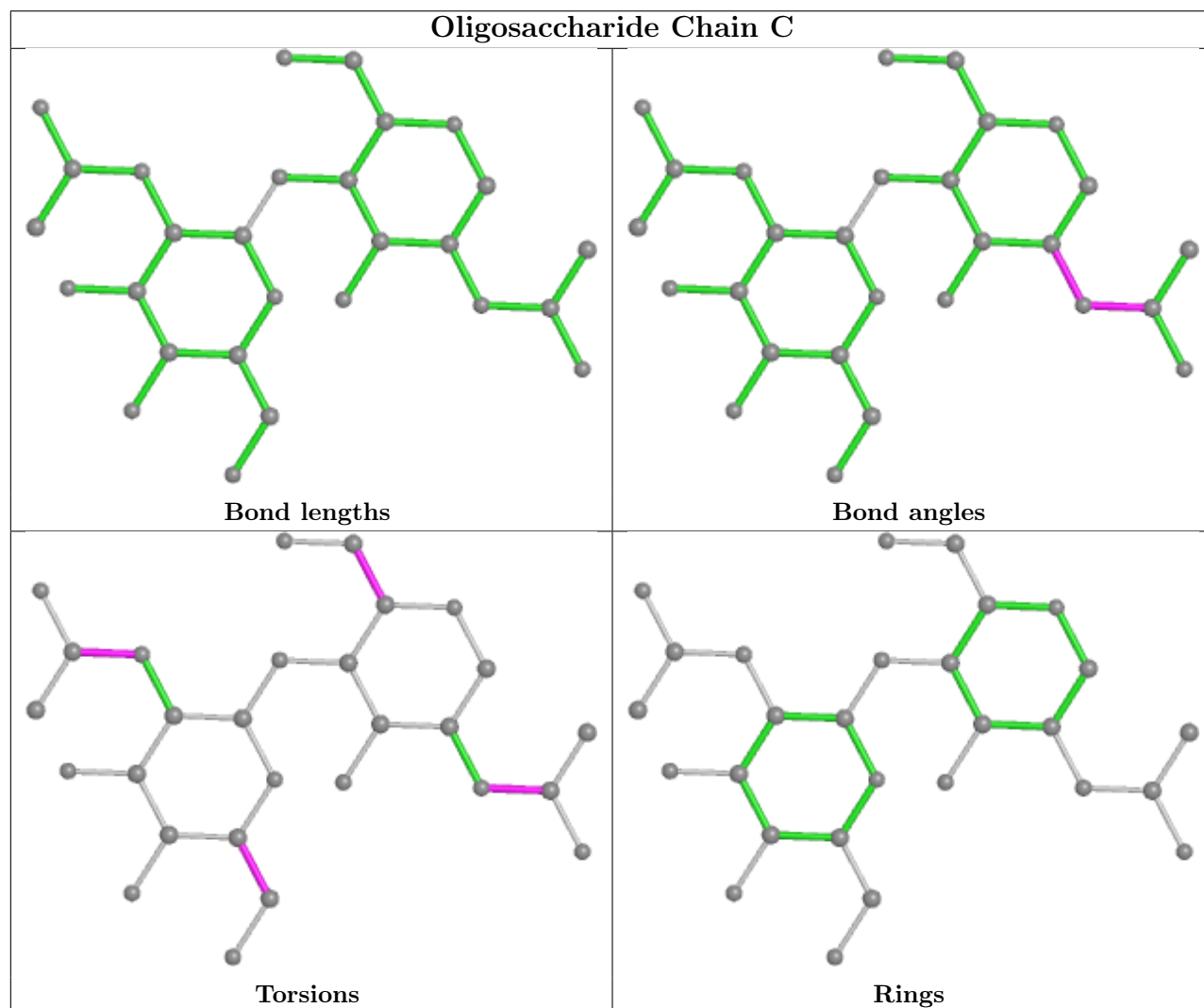
Mol	Chain	Res	Type	Atoms
2	C	1	NAG	C8-C7-N2-C2
2	C	1	NAG	O7-C7-N2-C2
2	D	2	NAG	C8-C7-N2-C2
2	D	2	NAG	O7-C7-N2-C2
2	D	1	NAG	C8-C7-N2-C2
2	D	1	NAG	O7-C7-N2-C2
2	C	2	NAG	O5-C5-C6-O6
2	C	2	NAG	C4-C5-C6-O6
2	D	1	NAG	O5-C5-C6-O6
2	C	1	NAG	O5-C5-C6-O6
2	C	2	NAG	C8-C7-N2-C2
2	D	1	NAG	C4-C5-C6-O6
2	C	1	NAG	C4-C5-C6-O6
2	C	2	NAG	O7-C7-N2-C2

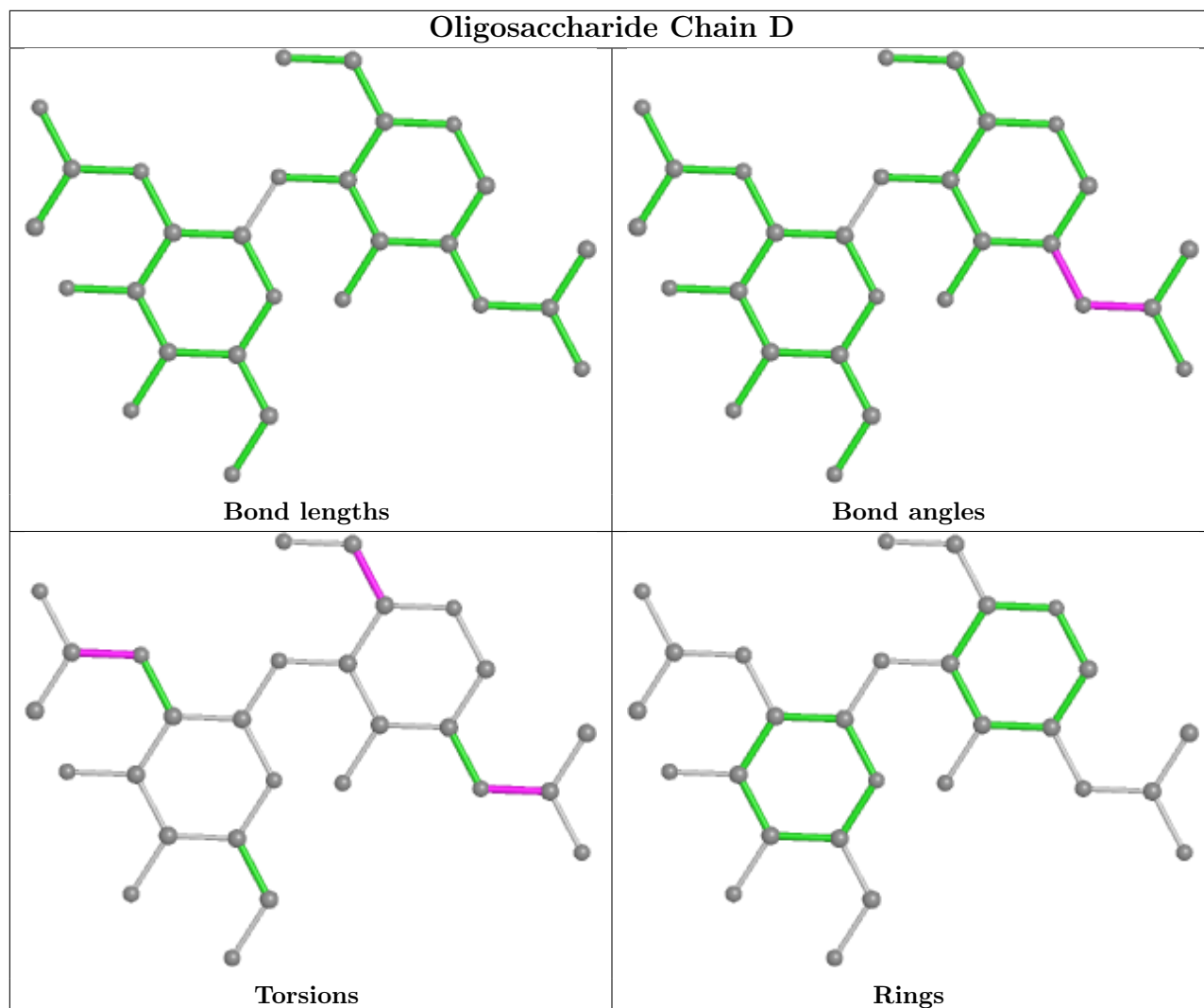
There are no ring outliers.

4 monomers are involved in 6 short contacts:

Mol	Chain	Res	Type	Clashes	Symm-Clashes
2	D	1	NAG	4	0
2	D	2	NAG	4	0
2	C	1	NAG	1	0
2	C	2	NAG	1	0

The following is a two-dimensional graphical depiction of Mogul quality analysis of bond lengths, bond angles, torsion angles, and ring geometry for oligosaccharide.





5.6 Ligand geometry [i](#)

Of 10 ligands modelled in this entry, 2 are monoatomic - leaving 8 for Mogul analysis.

In the following table, the Counts columns list the number of bonds (or angles) for which Mogul statistics could be retrieved, the number of bonds (or angles) that are observed in the model and the number of bonds (or angles) that are defined in the Chemical Component Dictionary. The Link column lists molecule types, if any, to which the group is linked. The Z score for a bond length (or angle) is the number of standard deviations the observed value is removed from the expected value. A bond length (or angle) with $|Z| > 2$ is considered an outlier worth inspection. RMSZ is the root-mean-square of all Z scores of the bond lengths (or angles).

Mol	Type	Chain	Res	Link	Bond lengths			Bond angles		
					Counts	RMSZ	$\# Z > 2$	Counts	RMSZ	$\# Z > 2$
3	NAG	B	3081	1	14,14,15	0.64	0	17,19,21	0.62	0
3	NAG	A	3081	1	14,14,15	0.62	0	17,19,21	0.62	0
3	NAG	A	5231	1	14,14,15	0.70	0	17,19,21	0.86	1 (5%)

Mol	Type	Chain	Res	Link	Bond lengths			Bond angles		
					Counts	RMSZ	# Z > 2	Counts	RMSZ	# Z > 2
3	NAG	B	5231	1	14,14,15	0.57	0	17,19,21	0.67	0
5	SO4	B	3001	-	4,4,4	0.30	0	6,6,6	0.10	0
6	DAN	B	2191	-	20,20,20	2.81	8 (40%)	23,28,28	1.94	4 (17%)
6	DAN	A	1191	-	20,20,20	2.59	9 (45%)	23,28,28	1.99	4 (17%)
5	SO4	A	3002	-	4,4,4	0.26	0	6,6,6	0.11	0

In the following table, the Chirals column lists the number of chiral outliers, the number of chiral centers analysed, the number of these observed in the model and the number defined in the Chemical Component Dictionary. Similar counts are reported in the Torsion and Rings columns. '-' means no outliers of that kind were identified.

Mol	Type	Chain	Res	Link	Chirals	Torsions	Rings
3	NAG	B	3081	1	-	2/6/23/26	0/1/1/1
3	NAG	A	3081	1	-	2/6/23/26	0/1/1/1
3	NAG	A	5231	1	-	2/6/23/26	0/1/1/1
3	NAG	B	5231	1	-	2/6/23/26	0/1/1/1
6	DAN	B	2191	-	-	1/18/34/34	0/1/1/1
6	DAN	A	1191	-	-	0/18/34/34	0/1/1/1

All (17) bond length outliers are listed below:

Mol	Chain	Res	Type	Atoms	Z	Observed(Å)	Ideal(Å)
6	B	2191	DAN	C4-C5	7.13	1.61	1.53
6	A	1191	DAN	C4-C5	6.95	1.61	1.53
6	B	2191	DAN	C4-C3	5.46	1.57	1.50
6	B	2191	DAN	C3-C2	4.56	1.40	1.33
6	A	1191	DAN	C4-C3	4.55	1.56	1.50
6	A	1191	DAN	C3-C2	4.41	1.40	1.33
6	B	2191	DAN	C7-C6	3.88	1.57	1.53
6	A	1191	DAN	C7-C6	2.82	1.56	1.53
6	B	2191	DAN	O6-C6	-2.77	1.41	1.46
6	B	2191	DAN	O8-C8	-2.61	1.37	1.43
6	B	2191	DAN	C9-C8	2.49	1.58	1.52
6	A	1191	DAN	O8-C8	-2.44	1.38	1.43
6	A	1191	DAN	C9-C8	2.36	1.58	1.52
6	B	2191	DAN	C2-C1	-2.26	1.43	1.48
6	A	1191	DAN	O4-C4	-2.24	1.39	1.43
6	A	1191	DAN	C11-C10	2.14	1.55	1.50
6	A	1191	DAN	O6-C6	-2.04	1.42	1.46

All (9) bond angle outliers are listed below:

Mol	Chain	Res	Type	Atoms	Z	Observed(°)	Ideal(°)
6	A	1191	DAN	O6-C2-C3	-5.96	117.65	124.61
6	B	2191	DAN	O6-C2-C3	-5.80	117.84	124.61
6	B	2191	DAN	O1B-C1-C2	3.97	124.09	114.20
6	A	1191	DAN	O1B-C1-C2	3.81	123.70	114.20
6	A	1191	DAN	O6-C2-C1	3.69	119.45	112.06
6	B	2191	DAN	O6-C2-C1	3.13	118.33	112.06
6	A	1191	DAN	O10-C10-C11	-2.25	117.88	122.06
3	A	5231	NAG	C2-N2-C7	-2.20	119.77	122.90
6	B	2191	DAN	O8-C8-C7	-2.16	103.85	109.10

There are no chirality outliers.

All (9) torsion outliers are listed below:

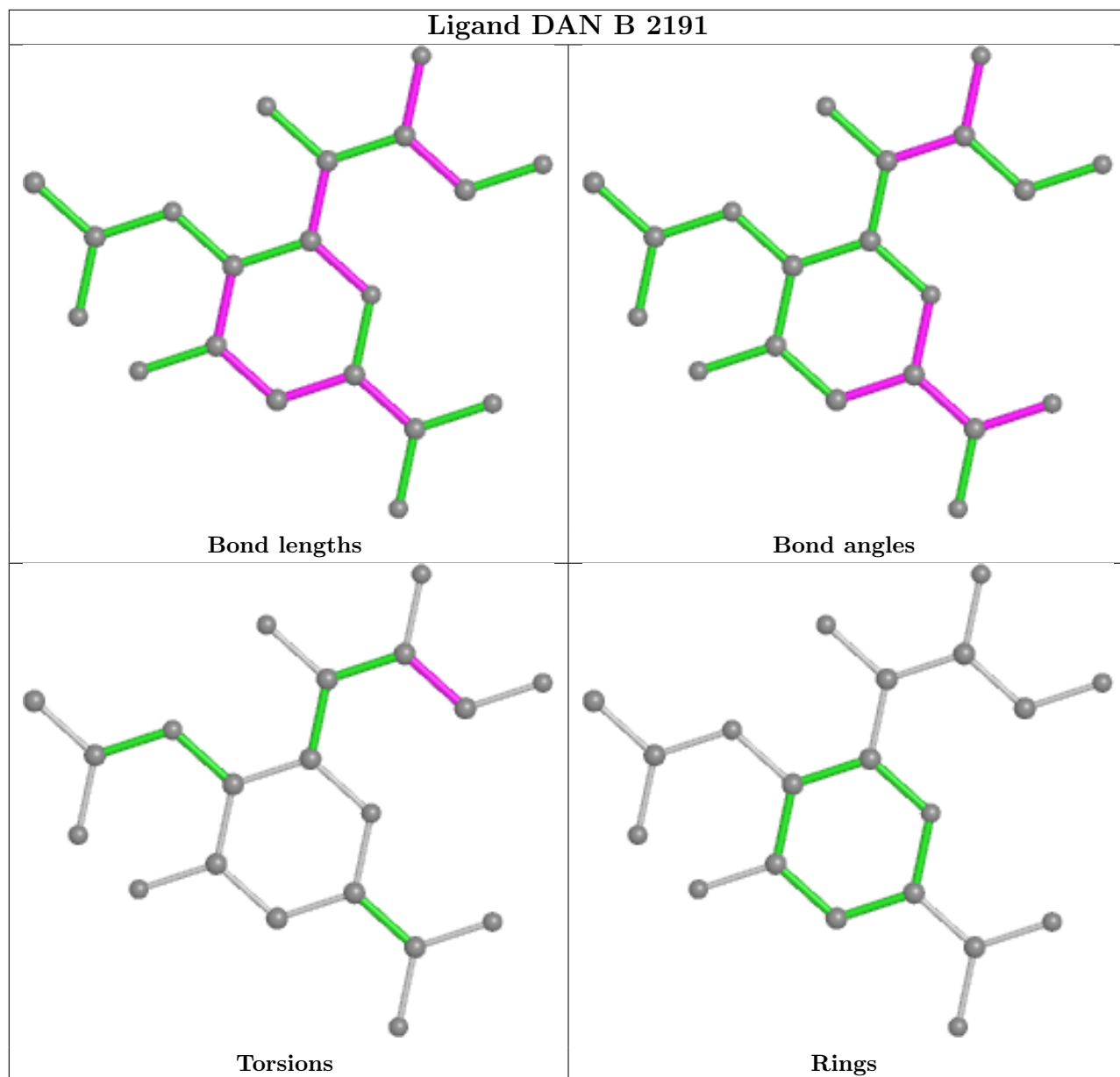
Mol	Chain	Res	Type	Atoms
3	B	3081	NAG	C8-C7-N2-C2
3	B	3081	NAG	O7-C7-N2-C2
3	B	5231	NAG	C8-C7-N2-C2
3	B	5231	NAG	O7-C7-N2-C2
3	A	5231	NAG	C4-C5-C6-O6
3	A	3081	NAG	C4-C5-C6-O6
6	B	2191	DAN	C7-C8-C9-O9
3	A	3081	NAG	O5-C5-C6-O6
3	A	5231	NAG	O5-C5-C6-O6

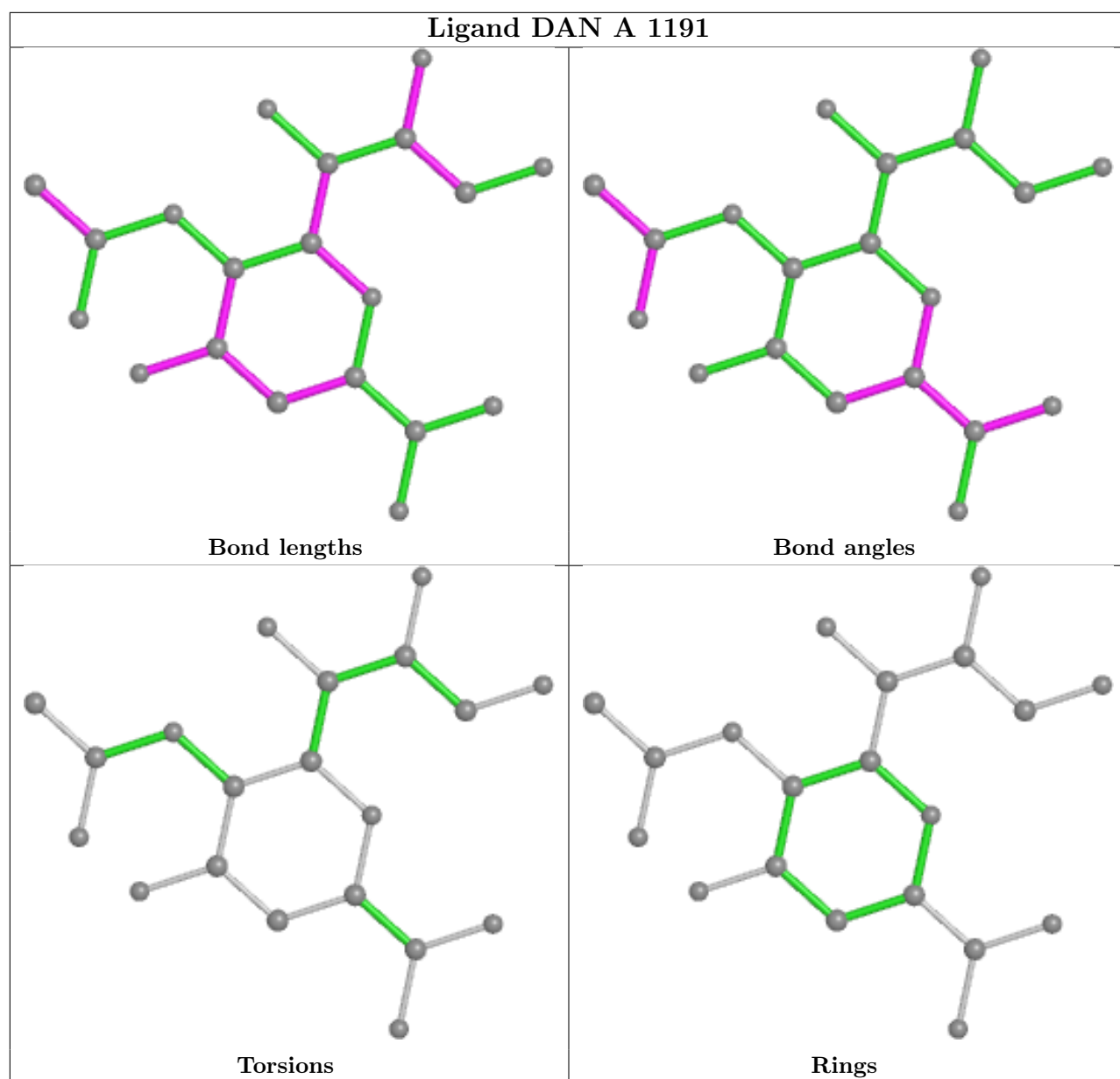
There are no ring outliers.

2 monomers are involved in 4 short contacts:

Mol	Chain	Res	Type	Clashes	Symm-Clashes
3	A	3081	NAG	2	0
3	A	5231	NAG	2	0

The following is a two-dimensional graphical depiction of Mogul quality analysis of bond lengths, bond angles, torsion angles, and ring geometry for all instances of the Ligand of Interest. In addition, ligands with molecular weight > 250 and outliers as shown on the validation Tables will also be included. For torsion angles, if less than 5% of the Mogul distribution of torsion angles is within 10 degrees of the torsion angle in question, then that torsion angle is considered an outlier. Any bond that is central to one or more torsion angles identified as an outlier by Mogul will be highlighted in the graph. For rings, the root-mean-square deviation (RMSD) between the ring in question and similar rings identified by Mogul is calculated over all ring torsion angles. If the average RMSD is greater than 60 degrees and the minimal RMSD between the ring in question and any Mogul-identified rings is also greater than 60 degrees, then that ring is considered an outlier. The outliers are highlighted in purple. The color gray indicates Mogul did not find sufficient equivalents in the CSD to analyse the geometry.





5.7 Other polymers [\(i\)](#)

There are no such residues in this entry.

5.8 Polymer linkage issues [\(i\)](#)

There are no chain breaks in this entry.

6 Fit of model and data

6.1 Protein, DNA and RNA chains

In the following table, the column labelled ‘#RSRZ > 2’ contains the number (and percentage) of RSRZ outliers, followed by percent RSRZ outliers for the chain as percentile scores relative to all X-ray entries and entries of similar resolution. The OWAB column contains the minimum, median, 95th percentile and maximum values of the occupancy-weighted average B-factor per residue. The column labelled ‘Q < 0.9’ lists the number of (and percentage) of residues with an average occupancy less than 0.9.

Mol	Chain	Analysed	<RSRZ>	#RSRZ>2	OWAB(Å ²)	Q<0.9
1	A	431/431 (100%)	0.06	15 (3%) 44 49	16, 35, 63, 97	1 (0%)
1	B	431/431 (100%)	0.14	15 (3%) 44 49	20, 36, 68, 90	1 (0%)
All	All	862/862 (100%)	0.10	30 (3%) 44 49	16, 36, 66, 97	2 (0%)

All (30) RSRZ outliers are listed below:

Mol	Chain	Res	Type	RSRZ
1	A	572	SER	8.2
1	A	161	SER	6.9
1	B	355	CYS	6.1
1	A	571	CYS	5.7
1	A	160	THR	5.3
1	A	163	LEU	5.2
1	B	356	PRO	4.4
1	B	307	ASN	4.1
1	A	162	GLY	3.8
1	A	159	CYS	3.5
1	B	352	THR	3.5
1	B	353	THR	3.5
1	B	469	CYS	2.8
1	B	357	GLY	2.8
1	B	361	ARG	2.7
1	A	390	SER	2.6
1	A	295	TYR	2.4
1	A	158	ARG	2.4
1	A	296	ASP	2.3
1	A	154	ASP	2.3
1	B	282	SER	2.2
1	B	348	VAL	2.1
1	B	239	LEU	2.1
1	A	387	GLY	2.1

Continued on next page...

Continued from previous page...

Mol	Chain	Res	Type	RSRZ
1	A	553	LYS	2.1
1	A	521	ILE	2.1
1	B	214	CYS	2.1
1	B	305	LYS	2.1
1	B	358	LYS	2.0
1	B	347	ASN	2.0

6.2 Non-standard residues in protein, DNA, RNA chains [i](#)

There are no non-standard protein/DNA/RNA residues in this entry.

6.3 Carbohydrates [i](#)

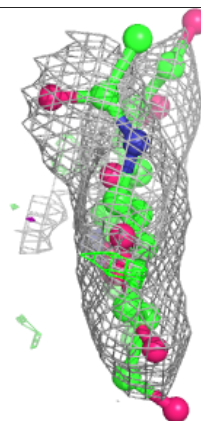
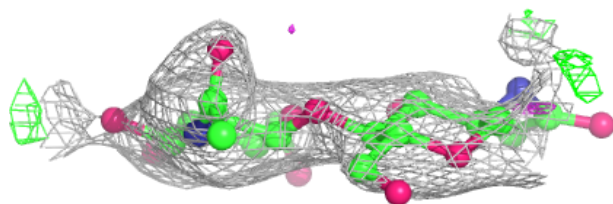
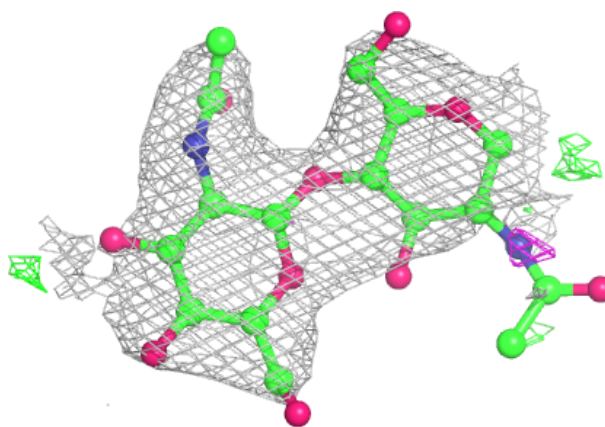
In the following table, the Atoms column lists the number of modelled atoms in the group and the number defined in the chemical component dictionary. The B-factors column lists the minimum, median, 95th percentile and maximum values of B factors of atoms in the group. The column labelled 'Q < 0.9' lists the number of atoms with occupancy less than 0.9.

Mol	Type	Chain	Res	Atoms	RSCC	RSR	B-factors(Å ²)	Q<0.9
2	NAG	D	2	14/15	0.81	0.28	68,80,83,86	0
2	NAG	C	1	14/15	0.82	0.26	83,87,98,101	0
2	NAG	D	1	14/15	0.85	0.23	82,83,89,90	0
2	NAG	C	2	14/15	0.89	0.17	80,83,85,85	0

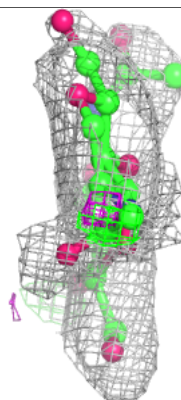
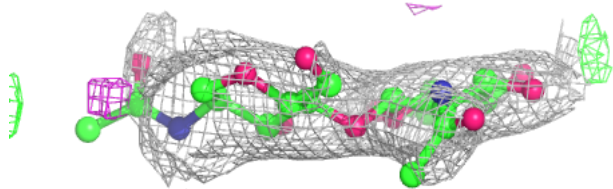
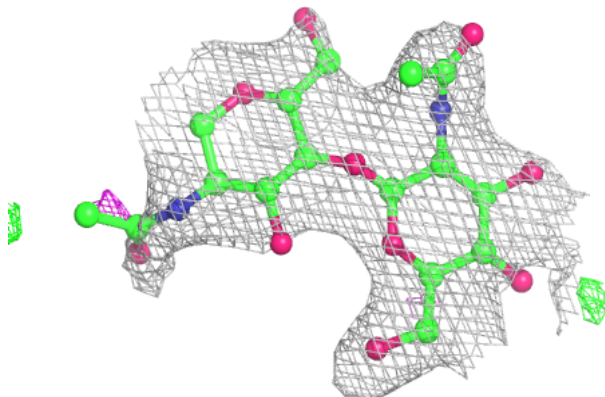
The following is a graphical depiction of the model fit to experimental electron density for oligosaccharide. Each fit is shown from different orientation to approximate a three-dimensional view.

Electron density around Chain C:

$2mF_o-DF_c$ (at 0.7 rmsd) in gray
 mF_o-DF_c (at 3 rmsd) in purple (negative)
and green (positive)

**Electron density around Chain D:**

$2mF_o-DF_c$ (at 0.7 rmsd) in gray
 mF_o-DF_c (at 3 rmsd) in purple (negative)
and green (positive)



6.4 Ligands

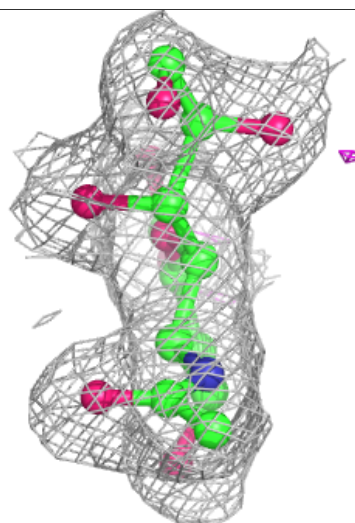
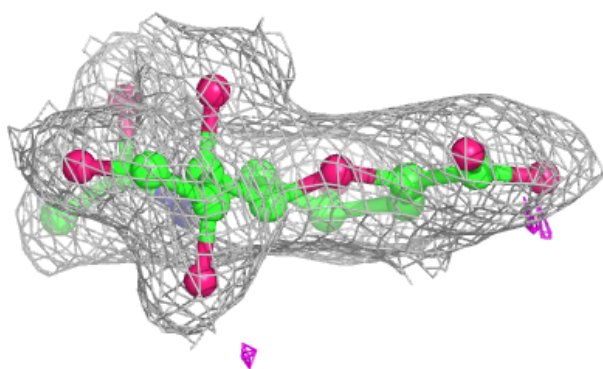
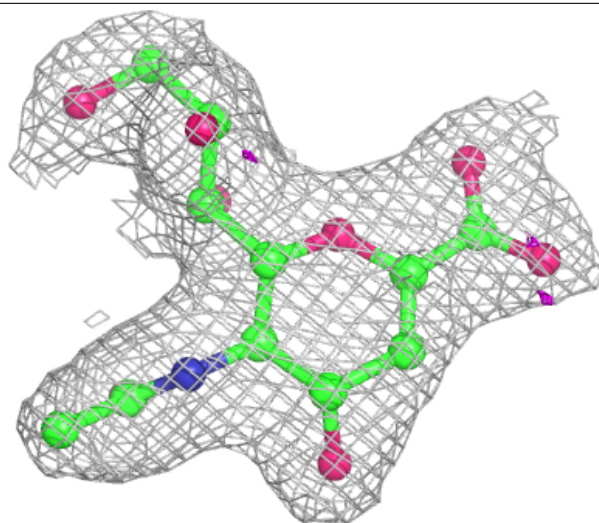
In the following table, the Atoms column lists the number of modelled atoms in the group and the number defined in the chemical component dictionary. The B-factors column lists the minimum, median, 95th percentile and maximum values of B factors of atoms in the group. The column labelled 'Q< 0.9' lists the number of atoms with occupancy less than 0.9.

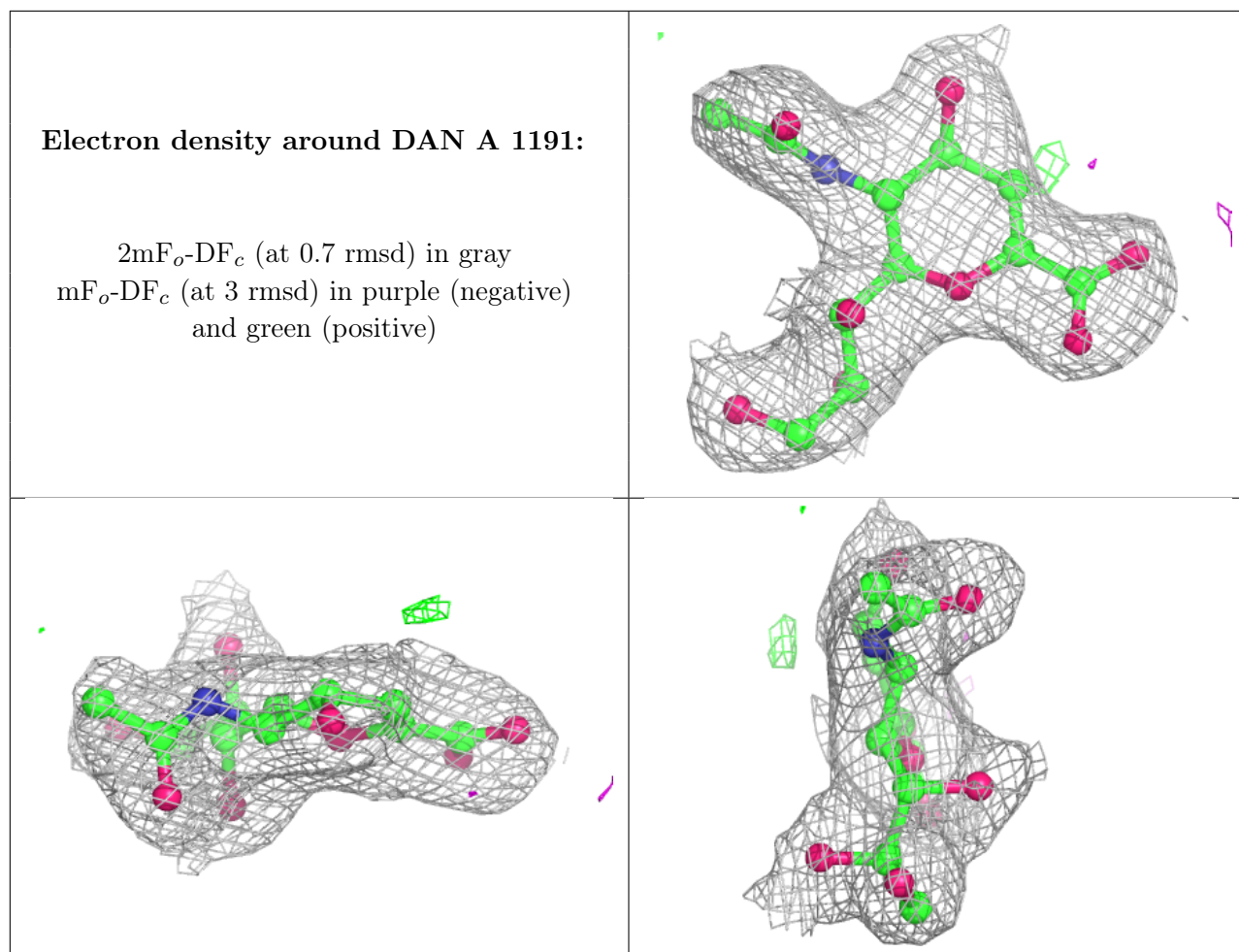
Mol	Type	Chain	Res	Atoms	RSCC	RSR	B-factors(\AA^2)	Q<0.9
3	NAG	A	3081	14/15	0.69	0.31	79,84,87,89	0
3	NAG	A	5231	14/15	0.74	0.24	70,75,77,79	0
3	NAG	B	3081	14/15	0.80	0.26	67,70,73,75	0
5	SO4	B	3001	5/5	0.83	0.39	65,66,68,68	5
5	SO4	A	3002	5/5	0.88	0.22	45,45,48,49	5
3	NAG	B	5231	14/15	0.88	0.19	58,65,71,73	0
6	DAN	B	2191	20/20	0.95	0.17	23,30,36,40	0
6	DAN	A	1191	20/20	0.96	0.10	33,40,43,43	0
4	CA	A	1001	1/1	0.97	0.06	43,43,43,43	0
4	CA	B	2001	1/1	0.98	0.04	37,37,37,37	0

The following is a graphical depiction of the model fit to experimental electron density of all instances of the Ligand of Interest. In addition, ligands with molecular weight > 250 and outliers as shown on the geometry validation Tables will also be included. Each fit is shown from different orientation to approximate a three-dimensional view.

Electron density around DAN B 2191:

$2mF_o-DF_c$ (at 0.7 rmsd) in gray
 mF_o-DF_c (at 3 rmsd) in purple (negative)
and green (positive)





6.5 Other polymers [i](#)

There are no such residues in this entry.