



Full wwPDB X-ray Structure Validation Report ⓘ

Apr 27, 2024 – 09:55 pm BST

PDB ID : 1UX9
Title : Mapping protein matrix cavities in human cytoglobin through Xe atom binding: a crystallographic investigation
Authors : De Sanctis, D.; Dewilde, S.; Pesce, A.; Moens, L.; Ascenzi, P.; Hankeln, T.; Burmester, T.; Bolognesi, M.
Deposited on : 2004-02-23
Resolution : 2.40 Å(reported)

This is a Full wwPDB X-ray Structure Validation Report for a publicly released PDB entry.

We welcome your comments at validation@mail.wwpdb.org

A user guide is available at

<https://www.wwpdb.org/validation/2017/XrayValidationReportHelp>

with specific help available everywhere you see the ⓘ symbol.

The types of validation reports are described at

<http://www.wwpdb.org/validation/2017/FAQs#types>.

The following versions of software and data (see [references ⓘ](#)) were used in the production of this report:

MolProbity : 4.02b-467
Mogul : 1.8.4, CSD as541be (2020)
Xtrriage (Phenix) : 1.13
EDS : 2.36.2
buster-report : 1.1.7 (2018)
Percentile statistics : 20191225.v01 (using entries in the PDB archive December 25th 2019)
Refmac : 5.8.0158
CCP4 : 7.0.044 (Gargrove)
Ideal geometry (proteins) : Engh & Huber (2001)
Ideal geometry (DNA, RNA) : Parkinson et al. (1996)
Validation Pipeline (wwPDB-VP) : 2.36.2

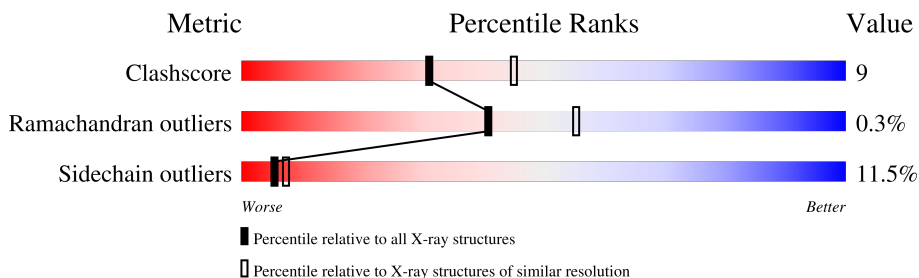
1 Overall quality at a glance

The following experimental techniques were used to determine the structure:

X-RAY DIFFRACTION

The reported resolution of this entry is 2.40 Å.

Percentile scores (ranging between 0-100) for global validation metrics of the entry are shown in the following graphic. The table shows the number of entries on which the scores are based.



Metric	Whole archive (#Entries)	Similar resolution (#Entries, resolution range(Å))
Clashscore	141614	4398 (2.40-2.40)
Ramachandran outliers	138981	4318 (2.40-2.40)
Sidechain outliers	138945	4319 (2.40-2.40)

The table below summarises the geometric issues observed across the polymeric chains and their fit to the electron density. The red, orange, yellow and green segments of the lower bar indicate the fraction of residues that contain outliers for ≥ 3 , 2, 1 and 0 types of geometric quality criteria respectively. A grey segment represents the fraction of residues that are not modelled. The numeric value for each fraction is indicated below the corresponding segment, with a dot representing fractions $\leq 5\%$

Mol	Chain	Length	Quality of chain
1	A	190	
1	B	190	

The following table lists non-polymeric compounds, carbohydrate monomers and non-standard residues in protein, DNA, RNA chains that are outliers for geometric or electron-density-fit criteria:

Mol	Type	Chain	Res	Chirality	Geometry	Clashes	Electron density
2	XE	A	1175	-	-	X	-

2 Entry composition [i](#)

There are 5 unique types of molecules in this entry. The entry contains 2639 atoms, of which 0 are hydrogens and 0 are deuteriums.

In the tables below, the ZeroOcc column contains the number of atoms modelled with zero occupancy, the AltConf column contains the number of residues with at least one atom in alternate conformation and the Trace column contains the number of residues modelled with at most 2 atoms.

- Molecule 1 is a protein called CYTOGLOBIN.

Mol	Chain	Residues	Atoms					ZeroOcc	AltConf	Trace
			Total	C	N	O	S			
1	A	154	1241	800	214	223	4	0	1	0
1	B	154	1242	801	216	221	4	0	1	0

There are 4 discrepancies between the modelled and reference sequences:

Chain	Residue	Modelled	Actual	Comment	Reference
A	38	SER	CYS	engineered mutation	UNP Q8WWM9
A	83	SER	CYS	engineered mutation	UNP Q8WWM9
B	38	SER	CYS	engineered mutation	UNP Q8WWM9
B	83	SER	CYS	engineered mutation	UNP Q8WWM9

- Molecule 2 is XENON (three-letter code: XE) (formula: Xe).

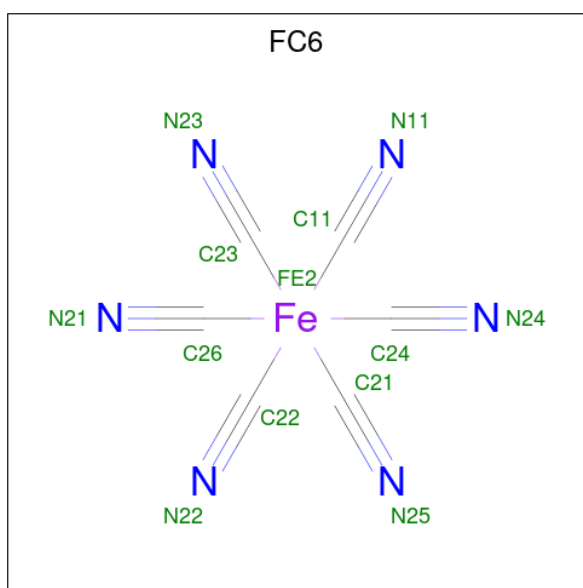
Mol	Chain	Residues	Atoms		ZeroOcc	AltConf
2	A	4	Total	Xe	0	0
			4	4		
2	B	3	Total	Xe	0	0
			3	3		

- Molecule 3 is PROTOPORPHYRIN IX CONTAINING FE (three-letter code: HEM) (formula: C₃₄H₃₂FeN₄O₄).



Mol	Chain	Residues	Atoms				ZeroOcc	AltConf	
3	A	1	Total	C	Fe	N	O	0	0
			43	34	1	4	4		
3	B	1	Total	C	Fe	N	O	0	0
			43	34	1	4	4		

- Molecule 4 is HEXACYANOFERRATE(3-) (three-letter code: FC6) (formula: C_6FeN_6).



Mol	Chain	Residues	Atoms				ZeroOcc	AltConf
4	A	1	Total	C	Fe	N	0	0
			13	6	1	6		
4	B	1	Total	C	Fe	N	0	0
			13	6	1	6		

- Molecule 5 is water.

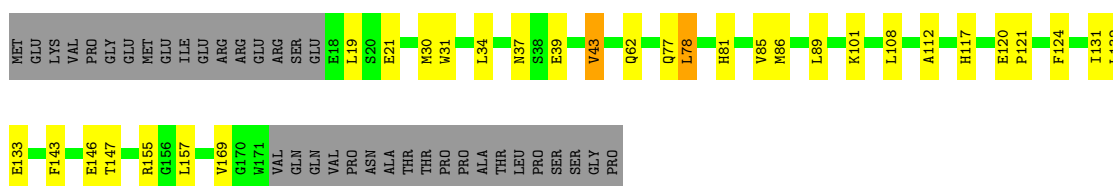
Mol	Chain	Residues	Atoms		ZeroOcc	AltConf
5	A	22	Total 22	O 22	0	0
5	B	15	Total 15	O 15	0	0

3 Residue-property plots [i](#)

These plots are drawn for all protein, RNA, DNA and oligosaccharide chains in the entry. The first graphic for a chain summarises the proportions of the various outlier classes displayed in the second graphic. The second graphic shows the sequence view annotated by issues in geometry. Residues are color-coded according to the number of geometric quality criteria for which they contain at least one outlier: green = 0, yellow = 1, orange = 2 and red = 3 or more. Stretches of 2 or more consecutive residues without any outlier are shown as a green connector. Residues present in the sample, but not in the model, are shown in grey.

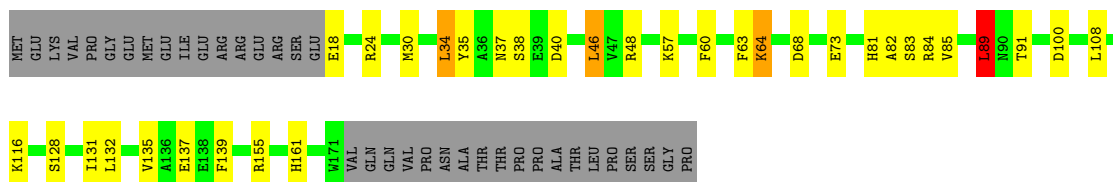
- Molecule 1: CYTOGLOBIN

Chain A: 



- Molecule 1: CYTOGLOBIN

Chain B: 



4 Data and refinement statistics

Property	Value	Source
Space group	P 21 21 21	Depositor
Cell constants a, b, c, α , β , γ	47.84Å 70.52Å 98.73Å 90.00° 90.00° 90.00°	Depositor
Resolution (Å)	29.80 – 2.40 28.69 – 2.00	Depositor EDS
% Data completeness (in resolution range)	98.3 (29.80-2.40) 97.8 (28.69-2.00)	Depositor EDS
R_{merge}	0.06	Depositor
R_{sym}	(Not available)	Depositor
$\langle I/\sigma(I) \rangle$ ¹	1.87 (at 2.00Å)	Xtrriage
Refinement program	REFMAC	Depositor
R, R_{free}	0.192 , 0.238 0.219 , (Not available)	Depositor DCC
R_{free} test set	No test flags present.	wwPDB-VP
Wilson B-factor (Å ²)	31.8	Xtrriage
Anisotropy	0.187	Xtrriage
Bulk solvent k_{sol} (e/Å ³), B_{sol} (Å ²)	0.40 , 50.3	EDS
L-test for twinning ²	$\langle L \rangle = 0.48$, $\langle L^2 \rangle = 0.31$	Xtrriage
Estimated twinning fraction	No twinning to report.	Xtrriage
F_o, F_c correlation	0.94	EDS
Total number of atoms	2639	wwPDB-VP
Average B, all atoms (Å ²)	27.0	wwPDB-VP

Xtrriage's analysis on translational NCS is as follows: *The largest off-origin peak in the Patterson function is 6.86% of the height of the origin peak. No significant pseudotranslation is detected.*

¹Intensities estimated from amplitudes.

²Theoretical values of $\langle |L| \rangle$, $\langle L^2 \rangle$ for acentric reflections are 0.5, 0.333 respectively for untwinned datasets, and 0.375, 0.2 for perfectly twinned datasets.

5 Model quality [i](#)

5.1 Standard geometry [i](#)

Bond lengths and bond angles in the following residue types are not validated in this section: XE, FC6, HEM

The Z score for a bond length (or angle) is the number of standard deviations the observed value is removed from the expected value. A bond length (or angle) with $|Z| > 5$ is considered an outlier worth inspection. RMSZ is the root-mean-square of all Z scores of the bond lengths (or angles).

Mol	Chain	Bond lengths		Bond angles	
		RMSZ	# $ Z > 5$	RMSZ	# $ Z > 5$
1	A	0.70	0/1272	0.77	1/1722 (0.1%)
1	B	0.71	1/1274 (0.1%)	0.81	5/1725 (0.3%)
All	All	0.71	1/2546 (0.0%)	0.79	6/3447 (0.2%)

All (1) bond length outliers are listed below:

Mol	Chain	Res	Type	Atoms	Z	Observed(Å)	Ideal(Å)
1	B	89	LEU	CG-CD1	6.54	1.76	1.51

All (6) bond angle outliers are listed below:

Mol	Chain	Res	Type	Atoms	Z	Observed(°)	Ideal(°)
1	B	89	LEU	CB-CG-CD1	8.99	126.29	111.00
1	B	68	ASP	CB-CG-OD2	6.50	124.15	118.30
1	B	89	LEU	CB-CG-CD2	-6.49	99.97	111.00
1	B	40	ASP	CB-CG-OD2	5.93	123.64	118.30
1	B	100	ASP	CB-CG-OD2	5.19	122.97	118.30
1	A	78	LEU	CA-CB-CG	5.03	126.87	115.30

There are no chirality outliers.

There are no planarity outliers.

5.2 Too-close contacts [i](#)

In the following table, the Non-H and H(model) columns list the number of non-hydrogen atoms and hydrogen atoms in the chain respectively. The H(added) column lists the number of hydrogen atoms added and optimized by MolProbity. The Clashes column lists the number of clashes within the asymmetric unit, whereas Symm-Clashes lists symmetry-related clashes.

Mol	Chain	Non-H	H(model)	H(added)	Clashes	Symm-Clashes
1	A	1241	0	1237	25	0
1	B	1242	0	1238	17	0
2	A	4	0	0	7	0
2	B	3	0	0	1	0
3	A	43	0	30	5	0
3	B	43	0	30	2	0
4	A	13	0	0	0	0
4	B	13	0	0	0	0
5	A	22	0	0	4	0
5	B	15	0	0	0	0
All	All	2639	0	2535	47	0

The all-atom clashscore is defined as the number of clashes found per 1000 atoms (including hydrogen atoms). The all-atom clashscore for this structure is 9.

All (47) close contacts within the same asymmetric unit are listed below, sorted by their clash magnitude.

Atom-1	Atom-2	Interatomic distance (Å)	Clash overlap (Å)
1:B:89:LEU:CG	1:B:89:LEU:CD1	1.76	1.60
1:B:89:LEU:CD1	1:B:89:LEU:HG	2.03	0.85
1:A:62:GLN:H	1:A:77:GLN:HE22	1.35	0.75
1:B:63:PHE:O	1:B:64:LYS:CB	2.37	0.72
1:A:89:LEU:HD13	2:A:1174:XE:XE	2.70	0.70
1:B:89:LEU:CD1	1:B:89:LEU:CD2	2.69	0.69
1:A:133[B]:GLU:OE1	5:A:2014:HOH:O	2.12	0.66
1:A:81:HIS:CE1	1:A:85:VAL:CG2	2.83	0.62
1:B:57:LYS:HB3	1:B:64:LYS:HA	1.82	0.62
1:A:34:LEU:HD13	2:A:1175:XE:XE	2.79	0.61
1:B:60:PHE:O	1:B:63:PHE:O	2.18	0.61
1:A:81:HIS:HD1	1:A:85:VAL:HG23	1.67	0.59
1:A:112:ALA:O	1:A:117:HIS:HD2	1.87	0.58
1:A:34:LEU:CD1	2:A:1175:XE:XE	3.32	0.56
1:A:39:GLU:O	1:A:43:VAL:HG13	2.06	0.56
1:B:63:PHE:O	1:B:64:LYS:HB3	2.05	0.55
1:A:131:ILE:HG23	2:A:1175:XE:XE	2.84	0.55
1:A:62:GLN:H	1:A:77:GLN:NE2	2.05	0.54
1:B:46:LEU:HD13	2:B:1173:XE:XE	2.87	0.52
1:A:81:HIS:ND1	1:A:85:VAL:HG23	2.24	0.52
1:A:86:MET:CE	2:A:1175:XE:XE	3.36	0.52
1:B:48:ARG:NH2	1:B:137:GLU:OE1	2.43	0.51
1:B:30:MET:CE	1:B:139:PHE:CD1	2.94	0.51
1:A:31:TRP:HZ3	2:A:1175:XE:XE	2.72	0.51

Continued on next page...

Continued from previous page...

Atom-1	Atom-2	Interatomic distance (Å)	Clash overlap (Å)
1:A:117:HIS:ND1	3:A:1172:HEM:C3D	2.80	0.49
1:A:39:GLU:HA	5:A:2001:HOH:O	2.13	0.48
1:A:86:MET:HE3	2:A:1175:XE:XE	2.92	0.48
1:A:62:GLN:HB2	1:A:77:GLN:NE2	2.29	0.47
3:A:1172:HEM:HBB1	5:A:2011:HOH:O	2.15	0.47
3:B:1172:HEM:HBB2	3:B:1172:HEM:HMB1	1.97	0.47
1:A:81:HIS:O	1:A:85:VAL:HG23	2.14	0.46
1:A:117:HIS:CE1	3:A:1172:HEM:C3D	3.03	0.46
3:A:1172:HEM:HBB2	3:A:1172:HEM:CMB	2.45	0.46
1:B:30:MET:HE3	1:B:139:PHE:CD1	2.50	0.46
1:A:81:HIS:ND1	1:A:85:VAL:CG2	2.79	0.46
1:B:34:LEU:HD21	1:B:135:VAL:HG22	1.98	0.45
1:B:35:TYR:O	1:B:38:SER:HB2	2.17	0.43
1:B:63:PHE:O	1:B:64:LYS:HB2	2.14	0.43
3:B:1172:HEM:HHA	3:B:1172:HEM:HBA1	1.99	0.43
1:A:30:MET:HE1	1:A:147:THR:HG21	2.01	0.43
3:A:1172:HEM:HBB2	3:A:1172:HEM:HMB1	2.00	0.43
1:A:81:HIS:HD1	1:A:85:VAL:CG2	2.31	0.43
1:A:39:GLU:HG2	5:A:2002:HOH:O	2.18	0.42
1:A:121:PRO:O	1:A:124:PHE:HB2	2.20	0.42
1:B:131:ILE:O	1:B:135:VAL:HG23	2.19	0.41
1:B:46:LEU:HD22	1:B:82:ALA:HB2	2.02	0.40
1:B:81:HIS:O	1:B:85:VAL:HG23	2.21	0.40

There are no symmetry-related clashes.

5.3 Torsion angles [i](#)

5.3.1 Protein backbone [i](#)

In the following table, the Percentiles column shows the percent Ramachandran outliers of the chain as a percentile score with respect to all X-ray entries followed by that with respect to entries of similar resolution.

The Analysed column shows the number of residues for which the backbone conformation was analysed, and the total number of residues.

Mol	Chain	Analysed	Favoured	Allowed	Outliers	Percentiles	
1	A	153/190 (80%)	150 (98%)	3 (2%)	0	100	100
1	B	153/190 (80%)	151 (99%)	1 (1%)	1 (1%)	22	32

Continued on next page...

Continued from previous page...

Mol	Chain	Analysed	Favoured	Allowed	Outliers	Percentiles
All	All	306/380 (80%)	301 (98%)	4 (1%)	1 (0%)	41 55

All (1) Ramachandran outliers are listed below:

Mol	Chain	Res	Type
1	B	64	LYS

5.3.2 Protein sidechains [i](#)

In the following table, the Percentiles column shows the percent sidechain outliers of the chain as a percentile score with respect to all X-ray entries followed by that with respect to entries of similar resolution.

The Analysed column shows the number of residues for which the sidechain conformation was analysed, and the total number of residues.

Mol	Chain	Analysed	Rotameric	Outliers	Percentiles
1	A	131/162 (81%)	117 (89%)	14 (11%)	6 9
1	B	131/162 (81%)	115 (88%)	16 (12%)	5 6
All	All	262/324 (81%)	232 (88%)	30 (12%)	5 7

All (30) residues with a non-rotameric sidechain are listed below:

Mol	Chain	Res	Type
1	A	19	LEU
1	A	21	GLU
1	A	37	ASN
1	A	43	VAL
1	A	78	LEU
1	A	101	LYS
1	A	108	LEU
1	A	120	GLU
1	A	132	LEU
1	A	143	PHE
1	A	146	GLU
1	A	155	ARG
1	A	157	LEU
1	A	169	VAL
1	B	18	GLU
1	B	24	ARG
1	B	34	LEU

Continued on next page...

Continued from previous page...

Mol	Chain	Res	Type
1	B	37	ASN
1	B	46	LEU
1	B	73	GLU
1	B	83	SER
1	B	84	ARG
1	B	89	LEU
1	B	91	THR
1	B	108	LEU
1	B	116	LYS
1	B	128	SER
1	B	132	LEU
1	B	155	ARG
1	B	161	HIS

Sometimes sidechains can be flipped to improve hydrogen bonding and reduce clashes. All (6) such sidechains are listed below:

Mol	Chain	Res	Type
1	A	58	GLN
1	A	62	GLN
1	A	77	GLN
1	A	117	HIS
1	A	148	GLN
1	B	95	ASN

5.3.3 RNA [i](#)

There are no RNA molecules in this entry.

5.4 Non-standard residues in protein, DNA, RNA chains [i](#)

There are no non-standard protein/DNA/RNA residues in this entry.

5.5 Carbohydrates [i](#)

There are no monosaccharides in this entry.

5.6 Ligand geometry [i](#)

Of 11 ligands modelled in this entry, 7 are monoatomic - leaving 4 for Mogul analysis.

In the following table, the Counts columns list the number of bonds (or angles) for which Mogul statistics could be retrieved, the number of bonds (or angles) that are observed in the model and the number of bonds (or angles) that are defined in the Chemical Component Dictionary. The Link column lists molecule types, if any, to which the group is linked. The Z score for a bond length (or angle) is the number of standard deviations the observed value is removed from the expected value. A bond length (or angle) with $|Z| > 2$ is considered an outlier worth inspection. RMSZ is the root-mean-square of all Z scores of the bond lengths (or angles).

Mol	Type	Chain	Res	Link	Bond lengths			Bond angles		
					Counts	RMSZ	# Z > 2	Counts	RMSZ	# Z > 2
3	HEM	A	1172	1	41,50,50	1.93	6 (14%)	45,82,82	1.97	9 (20%)
4	FC6	B	1176	-	12,12,12	2.26	7 (58%)	-		
4	FC6	A	1176	-	12,12,12	2.58	7 (58%)	-		
3	HEM	B	1172	1	41,50,50	1.79	4 (9%)	45,82,82	1.45	8 (17%)

In the following table, the Chirals column lists the number of chiral outliers, the number of chiral centers analysed, the number of these observed in the model and the number defined in the Chemical Component Dictionary. Similar counts are reported in the Torsion and Rings columns. '-' means no outliers of that kind were identified.

Mol	Type	Chain	Res	Link	Chirals	Torsions	Rings
3	HEM	A	1172	1	-	2/12/54/54	-
3	HEM	B	1172	1	-	3/12/54/54	-

All (24) bond length outliers are listed below:

Mol	Chain	Res	Type	Atoms	Z	Observed(Å)	Ideal(Å)
3	A	1172	HEM	C3D-C2D	7.33	1.52	1.36
3	B	1172	HEM	C3D-C2D	6.79	1.51	1.36
3	B	1172	HEM	C3C-C2C	-4.94	1.33	1.40
3	A	1172	HEM	C3C-C2C	-4.82	1.33	1.40
3	A	1172	HEM	FE-ND	4.42	2.18	1.96
4	A	1176	FC6	C24-FE2	-3.73	1.82	1.93
4	A	1176	FC6	C11-FE2	-3.64	1.83	1.93
4	A	1176	FC6	C22-FE2	-3.60	1.83	1.93
4	A	1176	FC6	C26-FE2	-3.41	1.83	1.93
4	B	1176	FC6	C22-FE2	-3.36	1.83	1.93
4	A	1176	FC6	C23-FE2	-3.29	1.84	1.93
4	B	1176	FC6	C11-FE2	-3.06	1.84	1.93
3	B	1172	HEM	C3C-CAC	3.05	1.54	1.47
3	A	1172	HEM	C3C-CAC	3.04	1.54	1.47
4	B	1176	FC6	C26-FE2	-2.93	1.85	1.93
4	A	1176	FC6	C21-FE2	-2.89	1.85	1.93

Continued on next page...

Continued from previous page...

Mol	Chain	Res	Type	Atoms	Z	Observed(Å)	Ideal(Å)
4	B	1176	FC6	C21-FE2	-2.62	1.86	1.93
4	B	1176	FC6	C21-N25	2.60	1.21	1.15
3	B	1172	HEM	CAB-C3B	2.52	1.54	1.47
4	B	1176	FC6	C23-FE2	-2.48	1.86	1.93
3	A	1172	HEM	CAB-C3B	2.42	1.54	1.47
4	B	1176	FC6	C24-FE2	-2.20	1.87	1.93
4	A	1176	FC6	C23-N23	2.11	1.20	1.15
3	A	1172	HEM	CMD-C2D	2.03	1.55	1.50

All (17) bond angle outliers are listed below:

Mol	Chain	Res	Type	Atoms	Z	Observed(°)	Ideal(°)
3	A	1172	HEM	C4D-ND-C1D	7.29	112.60	105.07
3	A	1172	HEM	CBD-CAD-C3D	-4.75	99.42	112.63
3	A	1172	HEM	C4C-CHD-C1D	3.83	127.61	122.56
3	B	1172	HEM	C4D-ND-C1D	3.70	108.90	105.07
3	B	1172	HEM	C4C-CHD-C1D	3.26	126.85	122.56
3	B	1172	HEM	CBD-CAD-C3D	-3.14	103.89	112.63
3	A	1172	HEM	CMD-C2D-C1D	3.03	129.65	125.04
3	B	1172	HEM	CAD-C3D-C4D	2.68	129.34	124.66
3	A	1172	HEM	C3D-C4D-ND	-2.53	107.34	110.17
3	B	1172	HEM	CAA-CBA-CGA	-2.49	106.79	113.76
3	A	1172	HEM	C1B-NB-C4B	2.38	107.53	105.07
3	A	1172	HEM	C2C-C3C-C4C	2.33	108.52	106.90
3	B	1172	HEM	CMB-C2B-C1B	-2.22	121.66	125.04
3	A	1172	HEM	CMC-C2C-C3C	2.16	128.72	124.68
3	B	1172	HEM	O2D-CGD-CBD	2.14	120.89	114.03
3	A	1172	HEM	CAD-C3D-C4D	2.11	128.35	124.66
3	B	1172	HEM	O1D-CGD-CBD	-2.02	116.60	123.08

There are no chirality outliers.

All (5) torsion outliers are listed below:

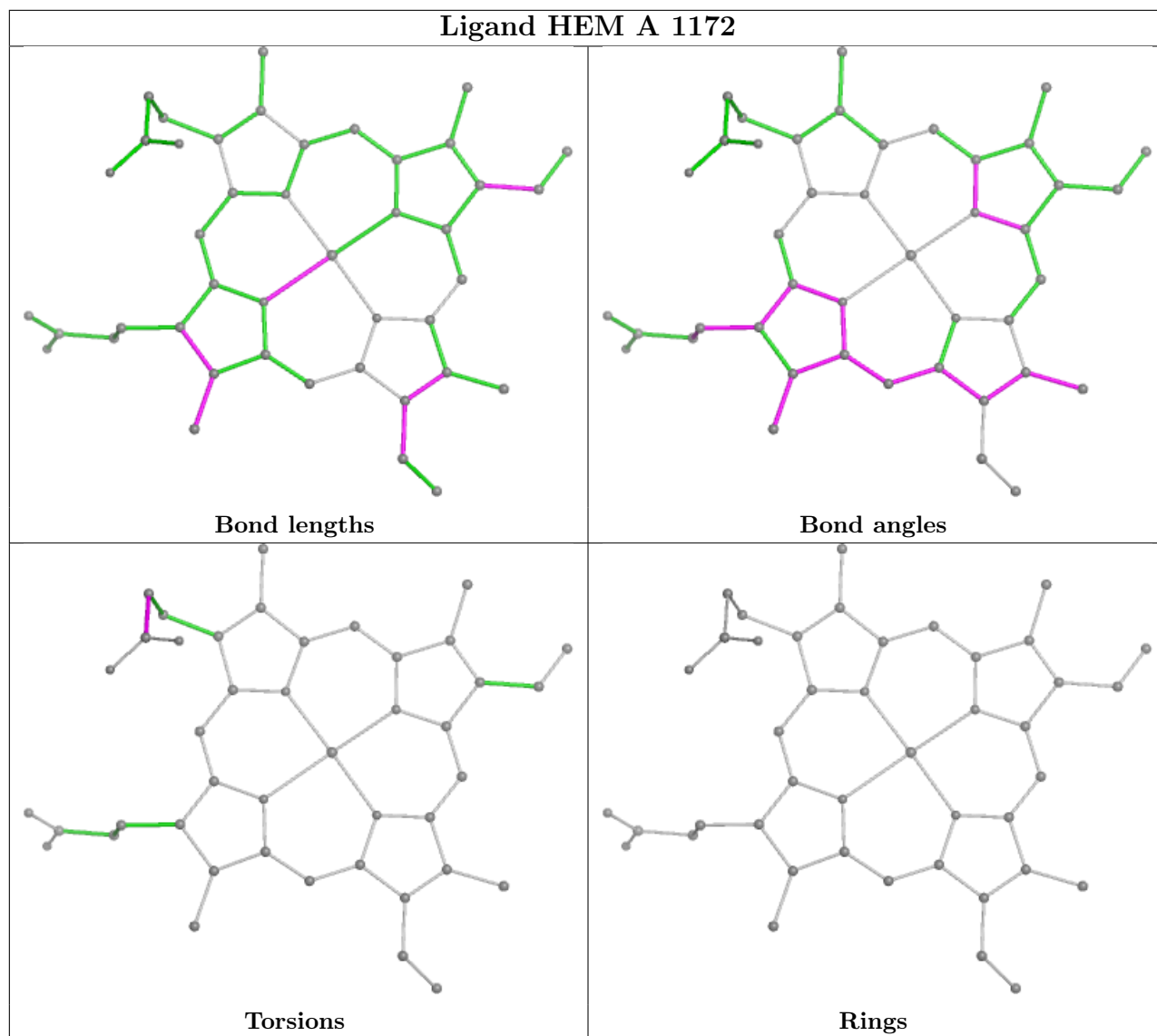
Mol	Chain	Res	Type	Atoms
3	B	1172	HEM	C1A-C2A-CAA-CBA
3	B	1172	HEM	CAA-CBA-CGA-O1A
3	B	1172	HEM	CAA-CBA-CGA-O2A
3	A	1172	HEM	CAA-CBA-CGA-O2A
3	A	1172	HEM	CAA-CBA-CGA-O1A

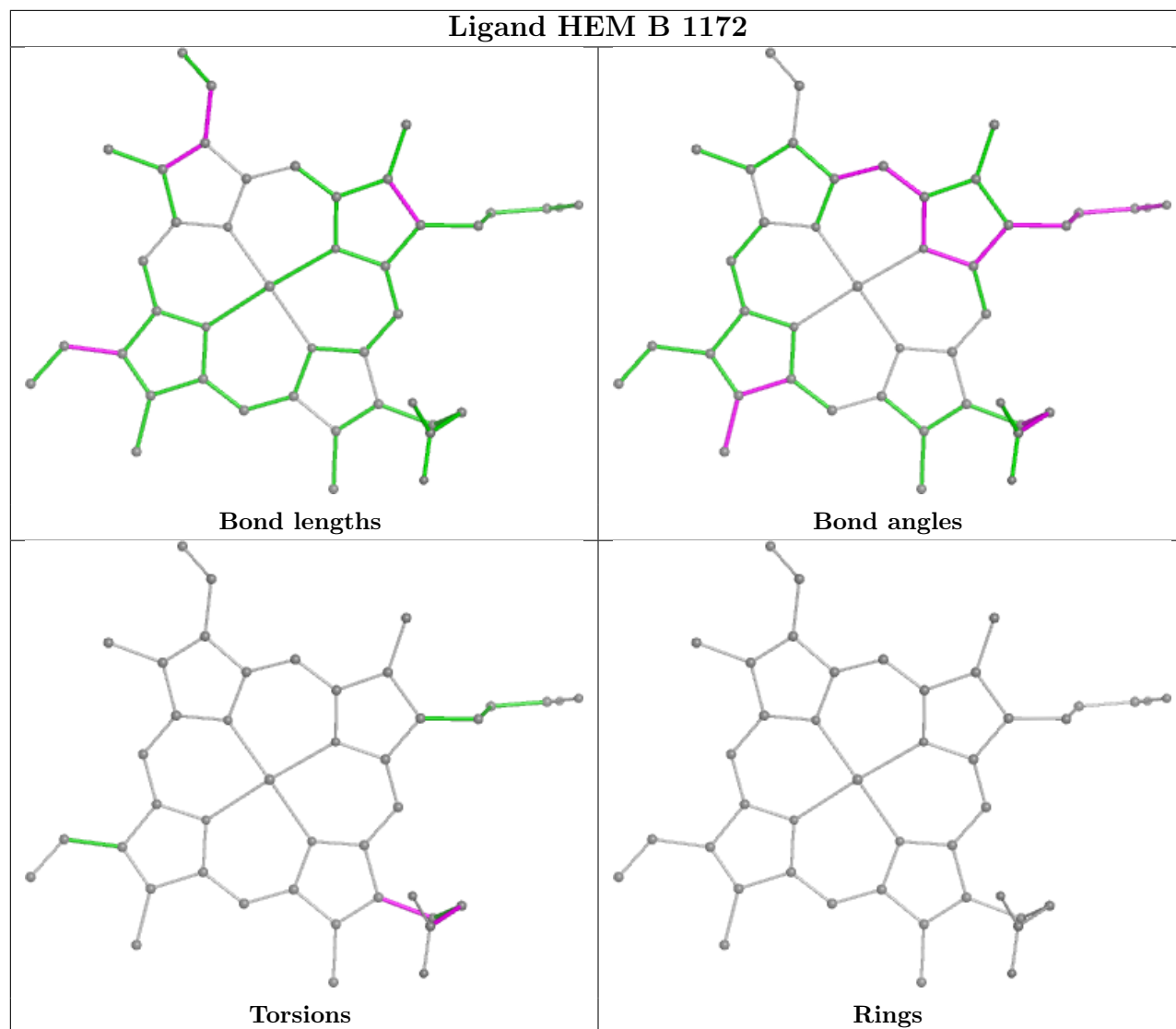
There are no ring outliers.

2 monomers are involved in 7 short contacts:

Mol	Chain	Res	Type	Clashes	Symm-Clashes
3	A	1172	HEM	5	0
3	B	1172	HEM	2	0

The following is a two-dimensional graphical depiction of Mogul quality analysis of bond lengths, bond angles, torsion angles, and ring geometry for all instances of the Ligand of Interest. In addition, ligands with molecular weight > 250 and outliers as shown on the validation Tables will also be included. For torsion angles, if less than 5% of the Mogul distribution of torsion angles is within 10 degrees of the torsion angle in question, then that torsion angle is considered an outlier. Any bond that is central to one or more torsion angles identified as an outlier by Mogul will be highlighted in the graph. For rings, the root-mean-square deviation (RMSD) between the ring in question and similar rings identified by Mogul is calculated over all ring torsion angles. If the average RMSD is greater than 60 degrees and the minimal RMSD between the ring in question and any Mogul-identified rings is also greater than 60 degrees, then that ring is considered an outlier. The outliers are highlighted in purple. The color gray indicates Mogul did not find sufficient equivalents in the CSD to analyse the geometry.





5.7 Other polymers [\(i\)](#)

There are no such residues in this entry.

5.8 Polymer linkage issues [\(i\)](#)

There are no chain breaks in this entry.

6 Fit of model and data

6.1 Protein, DNA and RNA chains

Unable to reproduce the depositors R factor - this section is therefore empty.

6.2 Non-standard residues in protein, DNA, RNA chains

Unable to reproduce the depositors R factor - this section is therefore empty.

6.3 Carbohydrates

Unable to reproduce the depositors R factor - this section is therefore empty.

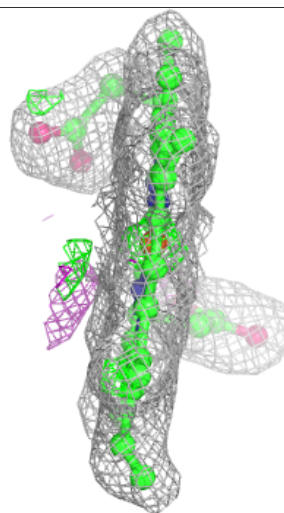
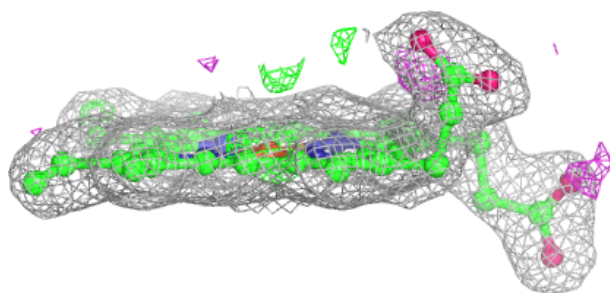
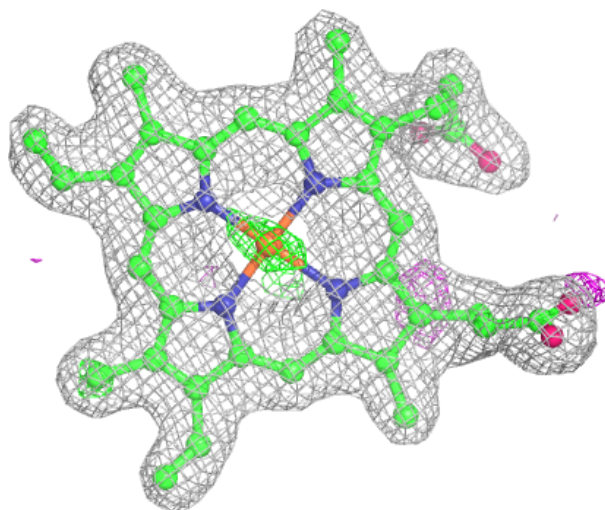
6.4 Ligands

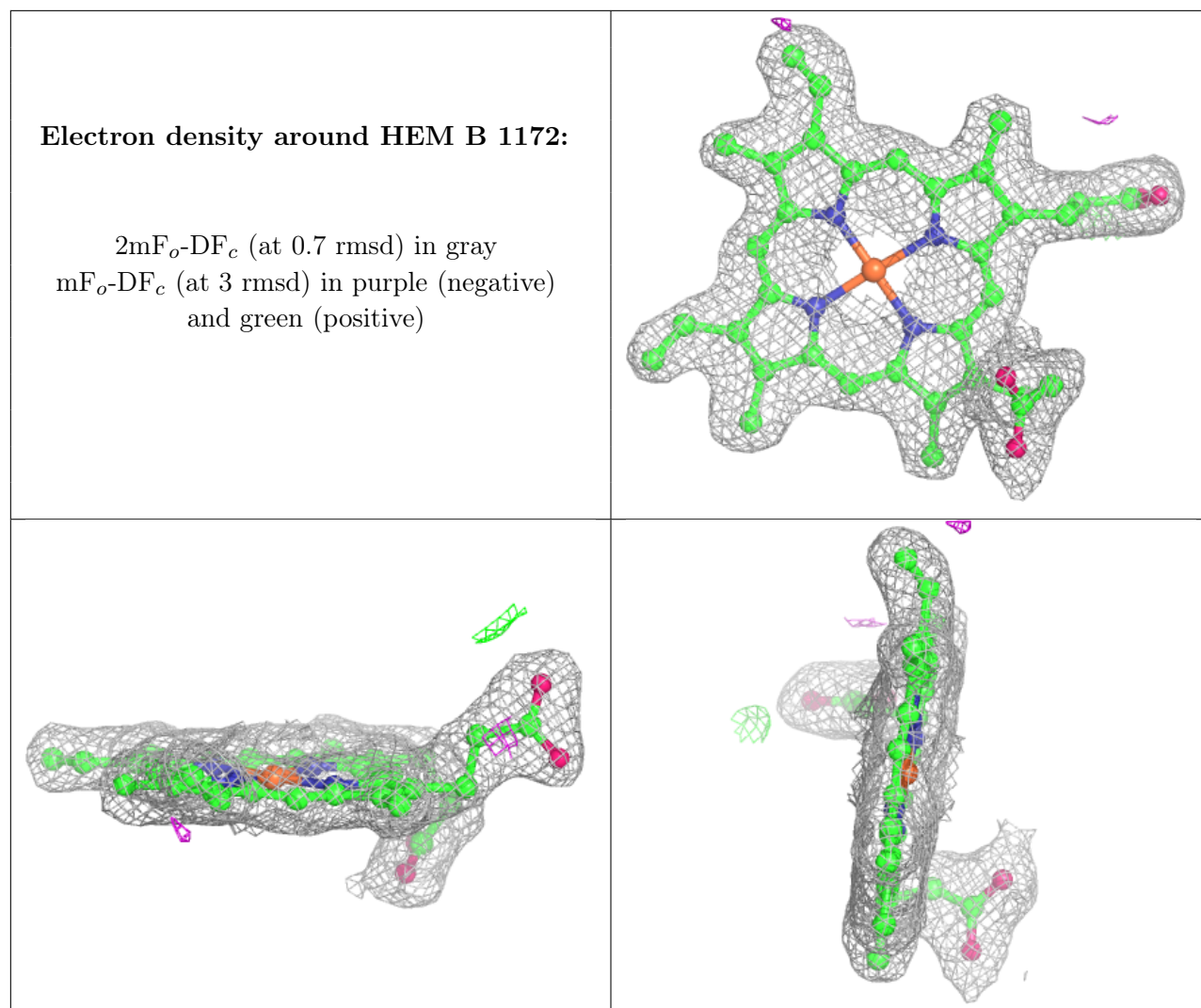
Unable to reproduce the depositors R factor - this section is therefore empty.

The following is a graphical depiction of the model fit to experimental electron density of all instances of the Ligand of Interest. In addition, ligands with molecular weight > 250 and outliers as shown on the geometry validation Tables will also be included. Each fit is shown from different orientation to approximate a three-dimensional view.

Electron density around HEM A 1172:

$2mF_o-DF_c$ (at 0.7 rmsd) in gray
 mF_o-DF_c (at 3 rmsd) in purple (negative)
and green (positive)





6.5 Other polymers [i](#)

Unable to reproduce the depositor's R factor - this section is therefore empty.