



# Full wwPDB X-ray Structure Validation Report ⓘ

Jun 11, 2024 – 08:55 PM EDT

PDB ID : 1THA  
Title : MECHANISM OF MOLECULAR RECOGNITION. STRUCTURAL ASPECTS OF 3,3'-DIiodo-L-THYRONINE BINDING TO HUMAN SERUM TRANSTHYRETIN  
Authors : Wojtczak, A.; Luft, J.; Cody, V.  
Deposited on : 1991-11-21  
Resolution : 2.00 Å(reported)

This is a Full wwPDB X-ray Structure Validation Report for a publicly released PDB entry.

We welcome your comments at [validation@mail.wwpdb.org](mailto:validation@mail.wwpdb.org)

A user guide is available at

<https://www.wwpdb.org/validation/2017/XrayValidationReportHelp>

with specific help available everywhere you see the ⓘ symbol.

The types of validation reports are described at

<http://www.wwpdb.org/validation/2017/FAQs#types>.

---

The following versions of software and data (see [references ⓘ](#)) were used in the production of this report:

MolProbity : 4.02b-467  
Mogul : 2022.3.0, CSD as543be (2022)  
Xtrriage (Phenix) : **NOT EXECUTED**  
EDS : **NOT EXECUTED**  
buster-report : 1.1.7 (2018)  
Percentile statistics : 20191225.v01 (using entries in the PDB archive December 25th 2019)  
Ideal geometry (proteins) : Engh & Huber (2001)  
Ideal geometry (DNA, RNA) : Parkinson et al. (1996)  
Validation Pipeline (wwPDB-VP) : 2.36.2

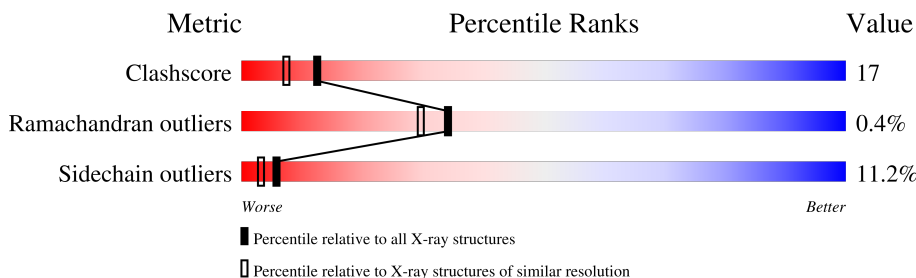
# 1 Overall quality at a glance

The following experimental techniques were used to determine the structure:

*X-RAY DIFFRACTION*

The reported resolution of this entry is 2.00 Å.

Percentile scores (ranging between 0-100) for global validation metrics of the entry are shown in the following graphic. The table shows the number of entries on which the scores are based.



Metric	Whole archive (#Entries)	Similar resolution (#Entries, resolution range(Å))
Clashscore	141614	9178 (2.00-2.00)
Ramachandran outliers	138981	9054 (2.00-2.00)
Sidechain outliers	138945	9053 (2.00-2.00)

The table below summarises the geometric issues observed across the polymeric chains and their fit to the electron density. The red, orange, yellow and green segments of the lower bar indicate the fraction of residues that contain outliers for  $\geq 3$ , 2, 1 and 0 types of geometric quality criteria respectively. A grey segment represents the fraction of residues that are not modelled. The numeric value for each fraction is indicated below the corresponding segment, with a dot representing fractions  $\leq 5\%$ .

Note EDS was not executed.

Mol	Chain	Length	Quality of chain
1	A	127	
1	B	127	

The following table lists non-polymeric compounds, carbohydrate monomers and non-standard residues in protein, DNA, RNA chains that are outliers for geometric or electron-density-fit criteria:

Mol	Type	Chain	Res	Chirality	Geometry	Clashes	Electron density
2	T33	A	130	-	X	-	-

## 2 Entry composition [i](#)

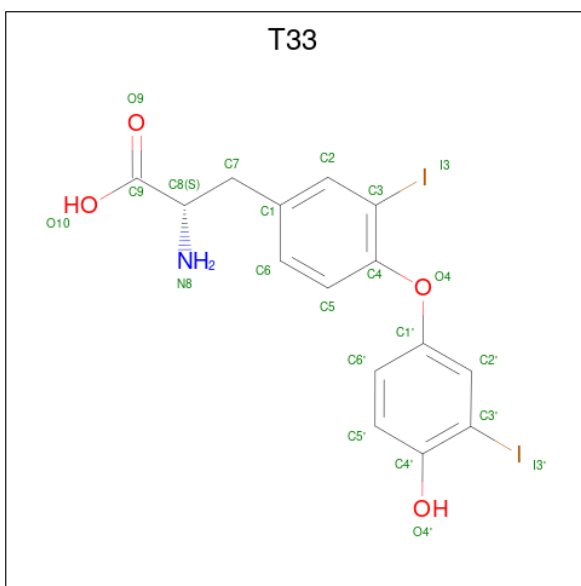
There are 3 unique types of molecules in this entry. The entry contains 1970 atoms, of which 0 are hydrogens and 0 are deuteriums.

In the tables below, the ZeroOcc column contains the number of atoms modelled with zero occupancy, the AltConf column contains the number of residues with at least one atom in alternate conformation and the Trace column contains the number of residues modelled with at most 2 atoms.

- Molecule 1 is a protein called TRANSTHYRETIN.

Mol	Chain	Residues	Atoms					ZeroOcc	AltConf	Trace
			Total	C	N	O	S			
1	A	118	Total	C	N	O	S	0	3	0
			925	589	155	178	3			
1	B	116	Total	C	N	O	S	0	2	0
			903	577	148	175	3			

- Molecule 2 is 3,3'-DEIODO-THYROXINE (three-letter code: T33) (formula:  $C_{15}H_{13}I_2NO_4$ ).



Mol	Chain	Residues	Atoms				ZeroOcc	AltConf	
			Total	C	I	N			O
2	A	1	Total	C	I	N	O	0	0
			22	15	2	1	4		
2	B	1	Total	C	I	N	O	0	0
			22	15	2	1	4		

- Molecule 3 is water.

Mol	Chain	Residues	Atoms		ZeroOcc	AltConf
3	A	50	Total 50	O 50	0	0
3	B	48	Total 48	O 48	0	0

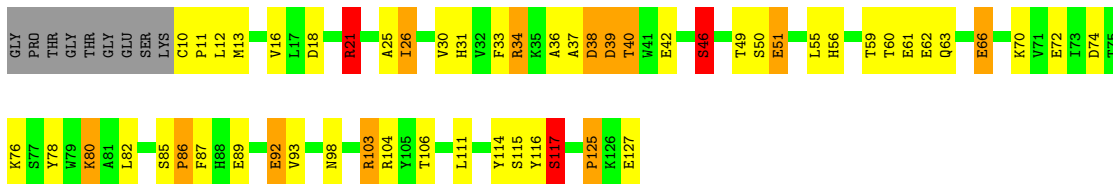
### 3 Residue-property plots [i](#)

These plots are drawn for all protein, RNA, DNA and oligosaccharide chains in the entry. The first graphic for a chain summarises the proportions of the various outlier classes displayed in the second graphic. The second graphic shows the sequence view annotated by issues in geometry. Residues are color-coded according to the number of geometric quality criteria for which they contain at least one outlier: green = 0, yellow = 1, orange = 2 and red = 3 or more. Stretches of 2 or more consecutive residues without any outlier are shown as a green connector. Residues present in the sample, but not in the model, are shown in grey.

Note EDS was not executed.

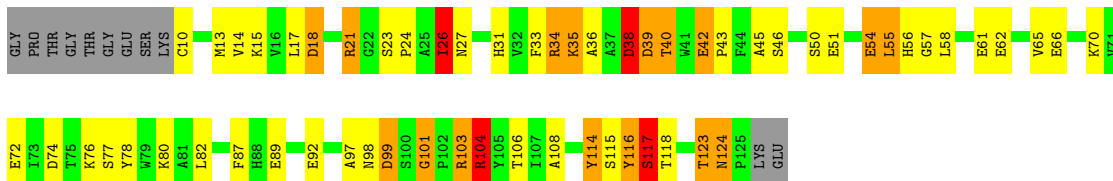
- Molecule 1: TRANSTHYRETIN

Chain A: 



- Molecule 1: TRANSTHYRETIN

Chain B: 



## 4 Data and refinement statistics

Xtriage (Phenix) and EDS were not executed - this section is therefore incomplete.

Property	Value	Source
Space group	P 21 21 2	Depositor
Cell constants a, b, c, $\alpha$ , $\beta$ , $\gamma$	43.93Å 86.65Å 65.64Å 90.00° 90.00° 90.00°	Depositor
Resolution (Å)	8.00 – 2.00	Depositor
% Data completeness (in resolution range)	(Not available) (8.00-2.00)	Depositor
$R_{merge}$	(Not available)	Depositor
$R_{sym}$	(Not available)	Depositor
Refinement program	CORELS, PROLSQ	Depositor
R, $R_{free}$	0.185 , (Not available)	Depositor
Estimated twinning fraction	No twinning to report.	Xtriage
Total number of atoms	1970	wwPDB-VP
Average B, all atoms (Å <sup>2</sup> )	23.0	wwPDB-VP

## 5 Model quality i

### 5.1 Standard geometry i

Bond lengths and bond angles in the following residue types are not validated in this section: T33

The Z score for a bond length (or angle) is the number of standard deviations the observed value is removed from the expected value. A bond length (or angle) with  $|Z| > 5$  is considered an outlier worth inspection. RMSZ is the root-mean-square of all Z scores of the bond lengths (or angles).

Mol	Chain	Bond lengths		Bond angles	
		RMSZ	# Z  >5	RMSZ	# Z  >5
1	A	1.24	3/966 (0.3%)	2.41	61/1315 (4.6%)
1	B	1.13	1/937 (0.1%)	4.78	49/1278 (3.8%)
All	All	1.19	4/1903 (0.2%)	3.77	110/2593 (4.2%)

Chiral center outliers are detected by calculating the chiral volume of a chiral center and verifying if the center is modelled as a planar moiety or with the opposite hand. A planarity outlier is detected by checking planarity of atoms in a peptide group, atoms in a mainchain group or atoms of a sidechain that are expected to be planar.

Mol	Chain	#Chirality outliers	#Planarity outliers
1	A	0	2

All (4) bond length outliers are listed below:

Mol	Chain	Res	Type	Atoms	Z	Observed(Å)	Ideal(Å)
1	A	46	SER	CA-CB	6.24	1.62	1.52
1	A	117	SER	CB-OG	-6.16	1.34	1.42
1	A	89	GLU	CD-OE1	-5.45	1.19	1.25
1	B	89	GLU	CD-OE1	-5.38	1.19	1.25

All (110) bond angle outliers are listed below:

Mol	Chain	Res	Type	Atoms	Z	Observed(°)	Ideal(°)
1	B	62[A]	GLU	OE1-CD-OE2	-102.75	0.00	123.30
1	B	62[B]	GLU	OE1-CD-OE2	-102.75	0.00	123.30
1	B	21	ARG	CD-NE-CZ	26.92	161.28	123.60
1	B	104	ARG	NE-CZ-NH2	-16.69	111.96	120.30
1	B	104	ARG	NE-CZ-NH1	16.59	128.60	120.30
1	B	116	TYR	CB-CG-CD2	13.66	129.19	121.00
1	A	74	ASP	CB-CG-OD1	13.27	130.24	118.30

*Continued on next page...*

*Continued from previous page...*

Mol	Chain	Res	Type	Atoms	Z	Observed(°)	Ideal(°)
1	A	74	ASP	CB-CG-OD2	-12.35	107.18	118.30
1	B	61	GLU	CA-CB-CG	11.78	139.32	113.40
1	B	21	ARG	NE-CZ-NH2	11.72	126.16	120.30
1	B	116	TYR	CB-CG-CD1	-11.72	113.97	121.00
1	A	34[A]	ARG	NE-CZ-NH1	10.84	125.72	120.30
1	A	34[B]	ARG	NE-CZ-NH1	10.84	125.72	120.30
1	A	21	ARG	NE-CZ-NH2	10.70	125.65	120.30
1	A	72	GLU	OE1-CD-OE2	9.99	135.29	123.30
1	A	78	TYR	CB-CG-CD1	-9.96	115.02	121.00
1	B	34	ARG	NE-CZ-NH1	9.96	125.28	120.30
1	B	103	ARG	NE-CZ-NH2	-9.64	115.48	120.30
1	A	103	ARG	CD-NE-CZ	-9.36	110.50	123.60
1	A	92	GLU	CA-CB-CG	9.23	133.72	113.40
1	A	66	GLU	CA-CB-CG	9.16	133.54	113.40
1	B	72	GLU	OE1-CD-OE2	9.04	134.14	123.30
1	B	72	GLU	CG-CD-OE2	-9.03	100.24	118.30
1	A	39	ASP	CB-CG-OD2	-8.93	110.27	118.30
1	A	117	SER	CB-CA-C	8.80	126.83	110.10
1	B	74	ASP	CB-CG-OD1	8.53	125.98	118.30
1	A	116	TYR	CB-CG-CD2	-8.49	115.91	121.00
1	A	18	ASP	CB-CG-OD2	-8.46	110.68	118.30
1	B	104	ARG	N-CA-CB	8.21	125.38	110.60
1	A	104	ARG	CD-NE-CZ	-8.09	112.28	123.60
1	B	117	SER	CB-CA-C	8.08	125.45	110.10
1	B	46	SER	N-CA-CB	-7.99	98.51	110.50
1	A	66	GLU	CG-CD-OE2	-7.88	102.53	118.30
1	B	115	SER	N-CA-CB	-7.34	99.49	110.50
1	A	116	TYR	CB-CG-CD1	7.29	125.37	121.00
1	B	21	ARG	NH1-CZ-NH2	-7.22	111.45	119.40
1	A	111	LEU	O-C-N	7.22	134.25	122.70
1	B	57	GLY	O-C-N	7.21	134.24	122.70
1	A	18	ASP	CB-CG-OD1	7.19	124.77	118.30
1	A	55	LEU	C-N-CA	7.18	139.66	121.70
1	B	97	ALA	C-N-CA	7.11	139.46	121.70
1	A	50	SER	CA-C-O	7.10	135.01	120.10
1	A	46	SER	CA-CB-OG	-6.92	92.51	111.20
1	A	33	PHE	CB-CG-CD1	-6.89	115.97	120.80
1	B	103	ARG	O-C-N	-6.64	112.07	122.70
1	A	78	TYR	CB-CG-CD2	6.63	124.98	121.00
1	B	38	ASP	CB-CG-OD2	-6.63	112.33	118.30
1	A	87	PHE	CG-CD1-CE1	6.60	128.06	120.80
1	B	45	ALA	CB-CA-C	6.58	119.97	110.10

*Continued on next page...*



*Continued from previous page...*

Mol	Chain	Res	Type	Atoms	Z	Observed(°)	Ideal(°)
1	A	38	ASP	CB-CG-OD2	-6.58	112.38	118.30
1	A	62	GLU	CG-CD-OE1	6.57	131.44	118.30
1	A	55	LEU	CB-CG-CD2	-6.54	99.89	111.00
1	B	101	GLY	N-CA-C	-6.46	96.96	113.10
1	A	114	TYR	CA-CB-CG	-6.42	101.21	113.40
1	B	97	ALA	CB-CA-C	6.25	119.47	110.10
1	A	39	ASP	N-CA-CB	-6.21	99.42	110.60
1	B	124	ASN	N-CA-CB	6.12	121.62	110.60
1	A	16	VAL	CA-CB-CG2	6.02	119.94	110.90
1	B	103	ARG	N-CA-C	6.01	127.24	111.00
1	A	72	GLU	CG-CD-OE2	-5.98	106.34	118.30
1	A	21	ARG	CB-CA-C	-5.98	98.45	110.40
1	A	82	LEU	CA-CB-CG	5.96	129.01	115.30
1	B	18	ASP	CB-CG-OD1	5.95	123.66	118.30
1	A	33	PHE	CB-CG-CD2	5.89	124.92	120.80
1	B	65	VAL	CA-CB-CG1	5.86	119.69	110.90
1	B	89	GLU	OE1-CD-OE2	-5.85	116.28	123.30
1	B	34	ARG	NH1-CZ-NH2	-5.82	113.00	119.40
1	B	114	TYR	CB-CG-CD2	5.82	124.49	121.00
1	A	93	VAL	CG1-CB-CG2	-5.79	101.63	110.90
1	B	26	ILE	CB-CA-C	5.79	123.19	111.60
1	B	65	VAL	O-C-N	-5.76	113.48	122.70
1	B	118	THR	O-C-N	5.76	131.92	122.70
1	B	38	ASP	CB-CG-OD1	5.66	123.40	118.30
1	A	56	HIS	CB-CA-C	-5.65	99.10	110.40
1	A	86	PRO	O-C-N	-5.65	113.66	122.70
1	A	66	GLU	CG-CD-OE1	5.62	129.53	118.30
1	A	72	GLU	CB-CA-C	-5.58	99.23	110.40
1	B	74	ASP	CB-CG-OD2	-5.56	113.29	118.30
1	A	72	GLU	CB-CG-CD	-5.56	99.18	114.20
1	A	92	GLU	CG-CD-OE1	5.56	129.42	118.30
1	A	85	SER	N-CA-CB	-5.55	102.17	110.50
1	A	98	ASN	O-C-N	5.55	131.58	122.70
1	B	106	THR	N-CA-CB	5.48	120.71	110.30
1	A	61	GLU	OE1-CD-OE2	5.45	129.83	123.30
1	B	99	ASP	CB-CG-OD1	5.38	123.15	118.30
1	A	127	GLU	CG-CD-OE1	5.36	129.02	118.30
1	A	87	PHE	CD1-CE1-CZ	-5.32	113.71	120.10
1	A	26	ILE	CA-CB-CG1	-5.30	100.93	111.00
1	A	13[A]	MET	CB-CA-C	5.26	120.92	110.40
1	A	13[B]	MET	CB-CA-C	5.26	120.92	110.40
1	A	30	VAL	CA-CB-CG2	5.26	118.79	110.90

*Continued on next page...*

Continued from previous page...

Mol	Chain	Res	Type	Atoms	Z	Observed(°)	Ideal(°)
1	B	54	GLU	OE1-CD-OE2	5.24	129.59	123.30
1	A	12	LEU	CA-C-O	-5.23	109.11	120.10
1	B	46	SER	CA-CB-OG	5.23	125.33	111.20
1	A	25	ALA	CB-CA-C	5.20	117.90	110.10
1	A	92	GLU	CG-CD-OE2	-5.17	107.96	118.30
1	B	114	TYR	CB-CG-CD1	-5.14	117.92	121.00
1	B	40	THR	N-CA-CB	5.12	120.03	110.30
1	A	18	ASP	N-CA-CB	-5.10	101.41	110.60
1	B	106	THR	CA-CB-CG2	5.10	119.54	112.40
1	A	49	THR	CA-C-O	5.08	130.76	120.10
1	A	40	THR	CA-CB-CG2	5.07	119.50	112.40
1	B	51	GLU	CB-CA-C	-5.06	100.29	110.40
1	B	104	ARG	CB-CA-C	-5.04	100.31	110.40
1	A	13[A]	MET	CG-SD-CE	-5.04	92.14	100.20
1	A	13[B]	MET	CG-SD-CE	-5.04	92.14	100.20
1	A	31	HIS	O-C-N	5.03	130.75	122.70
1	A	125	PRO	CA-C-N	-5.03	106.14	117.20
1	B	18	ASP	CB-CG-OD2	-5.00	113.80	118.30
1	B	77	SER	O-C-N	5.00	130.70	122.70

There are no chirality outliers.

All (2) planarity outliers are listed below:

Mol	Chain	Res	Type	Group
1	A	34[A]	ARG	Sidechain
1	A	34[B]	ARG	Sidechain

## 5.2 Too-close contacts [\(i\)](#)

In the following table, the Non-H and H(model) columns list the number of non-hydrogen atoms and hydrogen atoms in the chain respectively. The H(added) column lists the number of hydrogen atoms added and optimized by MolProbity. The Clashes column lists the number of clashes within the asymmetric unit, whereas Symm-Clashes lists symmetry-related clashes.

Mol	Chain	Non-H	H(model)	H(added)	Clashes	Symm-Clashes
1	A	925	0	899	21	0
1	B	903	0	878	42	0
2	A	22	0	12	0	0
2	B	22	0	11	2	0
3	A	50	0	0	3	0
3	B	48	0	0	4	0

Continued on next page...

*Continued from previous page...*

Mol	Chain	Non-H	H(model)	H(added)	Clashes	Symm-Clashes
All	All	1970	0	1800	62	0

The all-atom clashscore is defined as the number of clashes found per 1000 atoms (including hydrogen atoms). The all-atom clashscore for this structure is 17.

All (62) close contacts within the same asymmetric unit are listed below, sorted by their clash magnitude.

Atom-1	Atom-2	Interatomic distance (Å)	Clash overlap (Å)
1:B:103:ARG:HD3	1:B:124:ASN:HB3	1.19	1.16
1:B:103:ARG:CD	1:B:124:ASN:HB3	1.87	1.05
1:A:117:SER:HB2	1:B:117:SER:HB2	1.55	0.87
1:A:21:ARG:HG2	1:A:21:ARG:HH11	1.41	0.85
1:B:13[B]:MET:HE1	1:B:54:GLU:HG2	1.57	0.85
1:B:13[B]:MET:CE	1:B:54:GLU:HG2	2.06	0.84
1:B:92:GLU:HB2	3:B:154:HOH:O	1.83	0.79
1:B:116:TYR:OH	3:B:134:HOH:O	1.99	0.78
1:A:21:ARG:HG2	1:A:21:ARG:NH1	1.99	0.76
1:A:106:THR:HG23	3:A:137:HOH:O	1.85	0.76
1:A:36:ALA:HB3	1:A:40:THR:HG22	1.69	0.72
1:B:26:ILE:C	1:B:26:ILE:HD13	2.09	0.71
1:A:38:ASP:O	1:A:39:ASP:HB3	1.90	0.71
1:B:103:ARG:HD3	1:B:124:ASN:CB	2.11	0.71
1:B:103:ARG:O	1:B:104:ARG:HD3	1.91	0.71
1:B:38:ASP:O	1:B:39:ASP:HB2	1.92	0.69
1:B:21:ARG:NH1	1:B:78:TYR:OH	2.26	0.68
1:A:70:LYS:HD2	1:A:92:GLU:HG3	1.76	0.67
1:B:18:ASP:OD2	1:B:21:ARG:NH1	2.29	0.66
1:B:103:ARG:HG3	1:B:104:ARG:H	1.58	0.65
1:B:36:ALA:HB2	1:B:42:GLU:HG2	1.79	0.65
1:B:104:ARG:HB2	1:B:123:THR:O	1.97	0.64
1:B:13[B]:MET:HG2	1:B:14:VAL:N	2.12	0.64
1:B:26:ILE:HD13	1:B:26:ILE:O	1.98	0.63
1:B:103:ARG:HG3	1:B:104:ARG:N	2.12	0.63
1:B:103:ARG:NE	1:B:124:ASN:HB3	2.13	0.62
1:B:117:SER:OG	2:B:130:T33:I3'	2.86	0.61
1:B:15:LYS:HE2	1:B:17:LEU:HD21	1.84	0.60
1:B:13[B]:MET:CE	1:B:54:GLU:CG	2.81	0.56
1:B:104:ARG:HH11	1:B:104:ARG:HG3	1.71	0.56
1:B:98:ASN:O	1:B:101:GLY:O	2.24	0.56
1:B:26:ILE:HB	1:B:50:SER:O	2.06	0.55
1:B:35:LYS:HD2	1:B:40:THR:O	2.10	0.52

*Continued on next page...*

*Continued from previous page...*

Atom-1	Atom-2	Interatomic distance (Å)	Clash overlap (Å)
1:B:13[B]:MET:HG2	1:B:14:VAL:H	1.75	0.52
1:A:66:GLU:HG2	3:A:175:HOH:O	2.10	0.51
1:A:26:ILE:HD13	1:A:51:GLU:HA	1.93	0.51
1:B:55:LEU:HD13	1:B:58:LEU:HD21	1.93	0.50
1:B:33:PHE:HB2	1:B:70:LYS:HB3	1.92	0.50
1:B:80:LYS:HA	3:B:177:HOH:O	2.11	0.50
1:B:26:ILE:HG23	1:B:26:ILE:HD12	1.60	0.48
1:B:23:SER:HB2	1:B:24:PRO:HD2	1.96	0.47
1:B:42:GLU:HA	1:B:43:PRO:HD3	1.74	0.47
1:A:60:THR:OG1	1:A:63[B]:GLN:HG3	2.14	0.47
1:A:70:LYS:CD	1:A:92:GLU:HG3	2.44	0.47
1:B:66:GLU:OE2	1:B:98:ASN:OD1	2.32	0.47
1:B:13[B]:MET:HE2	1:B:54:GLU:HB3	1.97	0.46
1:A:11:PRO:HG2	1:A:59:THR:HG23	1.97	0.46
1:A:39:ASP:O	1:A:39:ASP:CG	2.54	0.46
1:B:35:LYS:HD2	1:B:35:LYS:HA	1.75	0.45
1:A:46:SER:HB2	3:A:156:HOH:O	2.17	0.43
1:A:103:ARG:HH11	1:A:103:ARG:HD3	1.56	0.43
1:A:76:LYS:O	1:A:80:LYS:HG2	2.19	0.43
1:A:21:ARG:NH1	1:A:21:ARG:CG	2.71	0.43
1:A:36:ALA:HB2	1:A:42:GLU:CD	2.38	0.43
1:A:38:ASP:OD1	1:A:38:ASP:N	2.50	0.42
1:B:34:ARG:NH2	1:B:66:GLU:O	2.53	0.42
1:B:108:ALA:HB1	2:B:130:T33:C6	2.50	0.42
1:B:38:ASP:O	1:B:39:ASP:CB	2.62	0.42
1:A:103:ARG:HA	1:A:125:PRO:HD3	2.02	0.41
1:A:37:ALA:C	1:A:39:ASP:H	2.23	0.41
1:B:87:PHE:HB2	1:B:114:TYR:CD2	2.56	0.41
1:B:31:HIS:CE1	3:B:155:HOH:O	2.75	0.40

There are no symmetry-related clashes.

## 5.3 Torsion angles [i](#)

### 5.3.1 Protein backbone [i](#)

In the following table, the Percentiles column shows the percent Ramachandran outliers of the chain as a percentile score with respect to all X-ray entries followed by that with respect to entries of similar resolution.

The Analysed column shows the number of residues for which the backbone conformation was analysed, and the total number of residues.

Mol	Chain	Analysed	Favoured	Allowed	Outliers	Percentiles	
1	A	119/127 (94%)	117 (98%)	2 (2%)	0	100	100
1	B	116/127 (91%)	107 (92%)	8 (7%)	1 (1%)	17	11
All	All	235/254 (92%)	224 (95%)	10 (4%)	1 (0%)	34	30

All (1) Ramachandran outliers are listed below:

Mol	Chain	Res	Type
1	B	99	ASP

### 5.3.2 Protein sidechains [i](#)

In the following table, the Percentiles column shows the percent sidechain outliers of the chain as a percentile score with respect to all X-ray entries followed by that with respect to entries of similar resolution.

The Analysed column shows the number of residues for which the sidechain conformation was analysed, and the total number of residues.

Mol	Chain	Analysed	Rotameric	Outliers	Percentiles	
1	A	102/105 (97%)	94 (92%)	8 (8%)	12	8
1	B	99/105 (94%)	85 (86%)	14 (14%)	3	1
All	All	201/210 (96%)	179 (89%)	22 (11%)	6	3

All (22) residues with a non-rotameric sidechain are listed below:

Mol	Chain	Res	Type
1	A	10	CYS
1	A	21	ARG
1	A	46	SER
1	A	51	GLU
1	A	80	LYS
1	A	86	PRO
1	A	115	SER
1	A	117	SER
1	B	10	CYS
1	B	26	ILE
1	B	27	ASN
1	B	35	LYS
1	B	38	ASP
1	B	39	ASP
1	B	42	GLU

*Continued on next page...*

*Continued from previous page...*

Mol	Chain	Res	Type
1	B	55	LEU
1	B	56	HIS
1	B	76	LYS
1	B	82	LEU
1	B	104	ARG
1	B	117	SER
1	B	123	THR

Sometimes sidechains can be flipped to improve hydrogen bonding and reduce clashes. All (1) such sidechains are listed below:

Mol	Chain	Res	Type
1	B	56	HIS

### 5.3.3 RNA [i](#)

There are no RNA molecules in this entry.

## 5.4 Non-standard residues in protein, DNA, RNA chains [i](#)

There are no non-standard protein/DNA/RNA residues in this entry.

## 5.5 Carbohydrates [i](#)

There are no monosaccharides in this entry.

## 5.6 Ligand geometry [i](#)

2 ligands are modelled in this entry.

In the following table, the Counts columns list the number of bonds (or angles) for which Mogul statistics could be retrieved, the number of bonds (or angles) that are observed in the model and the number of bonds (or angles) that are defined in the Chemical Component Dictionary. The Link column lists molecule types, if any, to which the group is linked. The Z score for a bond length (or angle) is the number of standard deviations the observed value is removed from the expected value. A bond length (or angle) with  $|Z| > 2$  is considered an outlier worth inspection. RMSZ is the root-mean-square of all Z scores of the bond lengths (or angles).

Mol	Type	Chain	Res	Link	Bond lengths			Bond angles		
					Counts	RMSZ	$\# Z  > 2$	Counts	RMSZ	$\# Z  > 2$
2	T33	B	130	-	22,23,23	1.39	4 (18%)	28,32,32	3.20	19 (67%)

Mol	Type	Chain	Res	Link	Bond lengths			Bond angles		
					Counts	RMSZ	# Z  > 2	Counts	RMSZ	# Z  > 2
2	T33	A	130	-	22,23,23	2.16	6 (27%)	28,32,32	5.09	22 (78%)

In the following table, the Chirals column lists the number of chiral outliers, the number of chiral centers analysed, the number of these observed in the model and the number defined in the Chemical Component Dictionary. Similar counts are reported in the Torsion and Rings columns. '-' means no outliers of that kind were identified.

Mol	Type	Chain	Res	Link	Chirals	Torsions	Rings
2	T33	B	130	-	-	4/12/12/12	0/2/2/2
2	T33	A	130	-	-	2/12/12/12	0/2/2/2

All (10) bond length outliers are listed below:

Mol	Chain	Res	Type	Atoms	Z	Observed(Å)	Ideal(Å)
2	A	130	T33	C6'-C1'	5.75	1.49	1.38
2	A	130	T33	C3'-I3'	4.97	2.20	2.10
2	B	130	T33	C6'-C1'	3.31	1.44	1.38
2	B	130	T33	C4-C3	3.01	1.44	1.39
2	A	130	T33	O4-C1'	2.85	1.45	1.39
2	A	130	T33	C4-C3	2.65	1.43	1.39
2	A	130	T33	C5'-C4'	2.64	1.44	1.39
2	B	130	T33	C4'-C3'	2.40	1.44	1.39
2	B	130	T33	O4-C1'	2.16	1.44	1.39
2	A	130	T33	C7-C1	-2.09	1.46	1.51

All (41) bond angle outliers are listed below:

Mol	Chain	Res	Type	Atoms	Z	Observed(°)	Ideal(°)
2	A	130	T33	C5'-C6'-C1'	-13.14	104.72	119.73
2	A	130	T33	C2'-C3'-C4'	-11.40	107.87	120.55
2	A	130	T33	C1-C7-C8	8.07	130.64	114.13
2	A	130	T33	C5'-C4'-C3'	7.17	126.06	119.27
2	A	130	T33	C6'-C5'-C4'	6.77	127.26	120.50
2	B	130	T33	C5'-C6'-C1'	-6.68	112.10	119.73
2	B	130	T33	C2'-C3'-C4'	-6.44	113.38	120.55
2	A	130	T33	C6'-C1'-C2'	6.17	128.80	120.50
2	A	130	T33	C4'-C3'-I3'	5.65	125.20	119.76
2	A	130	T33	C7-C1-C6	5.41	130.97	120.90
2	B	130	T33	C4-O4-C1'	5.09	130.27	117.95
2	B	130	T33	C4'-C3'-I3'	4.63	124.22	119.76
2	A	130	T33	C2'-C3'-I3'	4.48	126.87	118.46

*Continued on next page...*

Continued from previous page...

Mol	Chain	Res	Type	Atoms	Z	Observed(°)	Ideal(°)
2	B	130	T33	O10-C9-O9	-4.29	114.34	124.08
2	A	130	T33	O4-C1'-C2'	-4.05	106.45	119.16
2	A	130	T33	C6-C1-C2	-4.03	112.99	118.55
2	B	130	T33	O4-C4-C5	3.83	130.78	120.74
2	A	130	T33	C4-O4-C1'	3.75	127.02	117.95
2	B	130	T33	C5'-C4'-C3'	3.75	122.81	119.27
2	A	130	T33	O4-C4-C5	3.71	130.46	120.74
2	A	130	T33	O10-C9-O9	-3.56	116.00	124.08
2	A	130	T33	C5-C4-C3	-3.49	114.78	120.20
2	B	130	T33	O4-C4-C3	-3.34	113.10	118.75
2	B	130	T33	C1-C7-C8	3.29	120.87	114.13
2	A	130	T33	O4'-C4'-C3'	-3.26	115.38	119.16
2	B	130	T33	C6-C1-C2	-3.20	114.13	118.55
2	B	130	T33	C6'-C1'-C2'	3.19	124.79	120.50
2	B	130	T33	O4'-C4'-C3'	-3.17	115.48	119.16
2	A	130	T33	C1'-C2'-C3'	3.11	125.26	119.14
2	B	130	T33	C7-C1-C6	3.01	126.50	120.90
2	B	130	T33	C6'-C5'-C4'	2.77	123.26	120.50
2	B	130	T33	C5-C6-C1	2.66	124.49	121.00
2	B	130	T33	C5-C4-C3	-2.64	116.10	120.20
2	A	130	T33	C7-C1-C2	-2.61	115.95	120.43
2	B	130	T33	O4-C1'-C2'	-2.46	111.46	119.16
2	A	130	T33	O4-C4-C3	-2.37	114.74	118.75
2	A	130	T33	C5-C6-C1	2.33	124.06	121.00
2	B	130	T33	C1'-C2'-C3'	2.28	123.62	119.14
2	A	130	T33	C1-C2-C3	2.24	124.55	120.45
2	A	130	T33	C4-C3-I3	2.11	123.61	120.24
2	B	130	T33	C2'-C3'-I3'	2.08	122.37	118.46

There are no chirality outliers.

All (6) torsion outliers are listed below:

Mol	Chain	Res	Type	Atoms
2	A	130	T33	C1-C7-C8-N8
2	B	130	T33	C1-C7-C8-N8
2	B	130	T33	C1-C7-C8-C9
2	B	130	T33	N8-C8-C9-O10
2	A	130	T33	C1-C7-C8-C9
2	B	130	T33	N8-C8-C9-O9

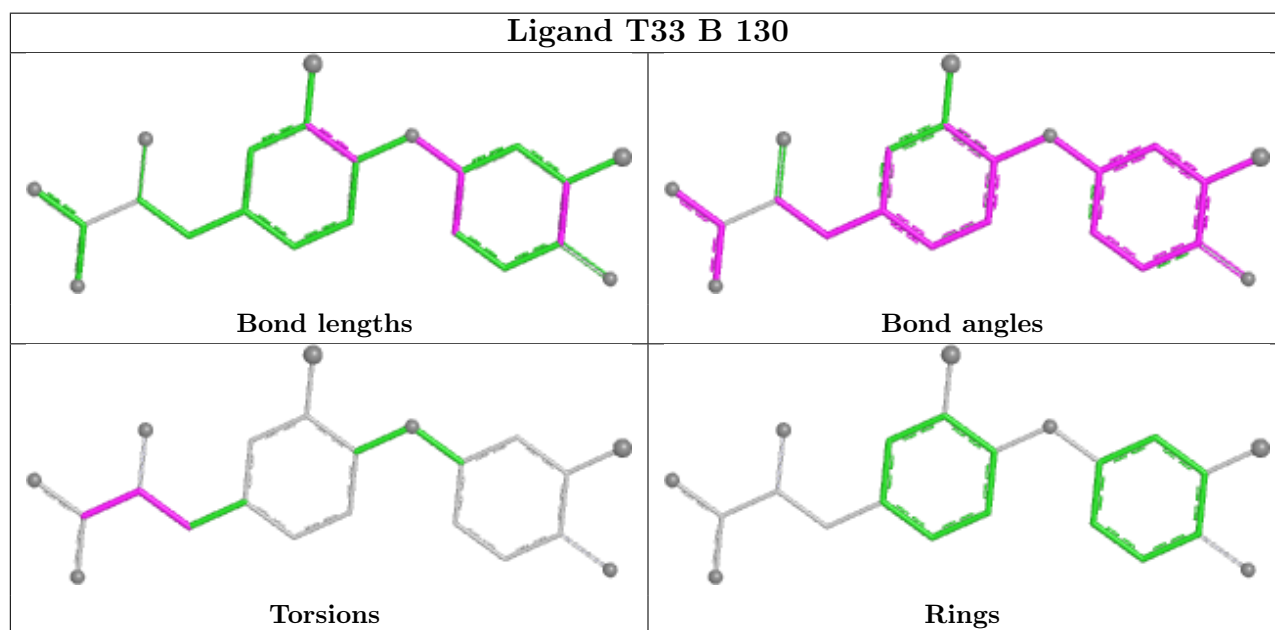
There are no ring outliers.

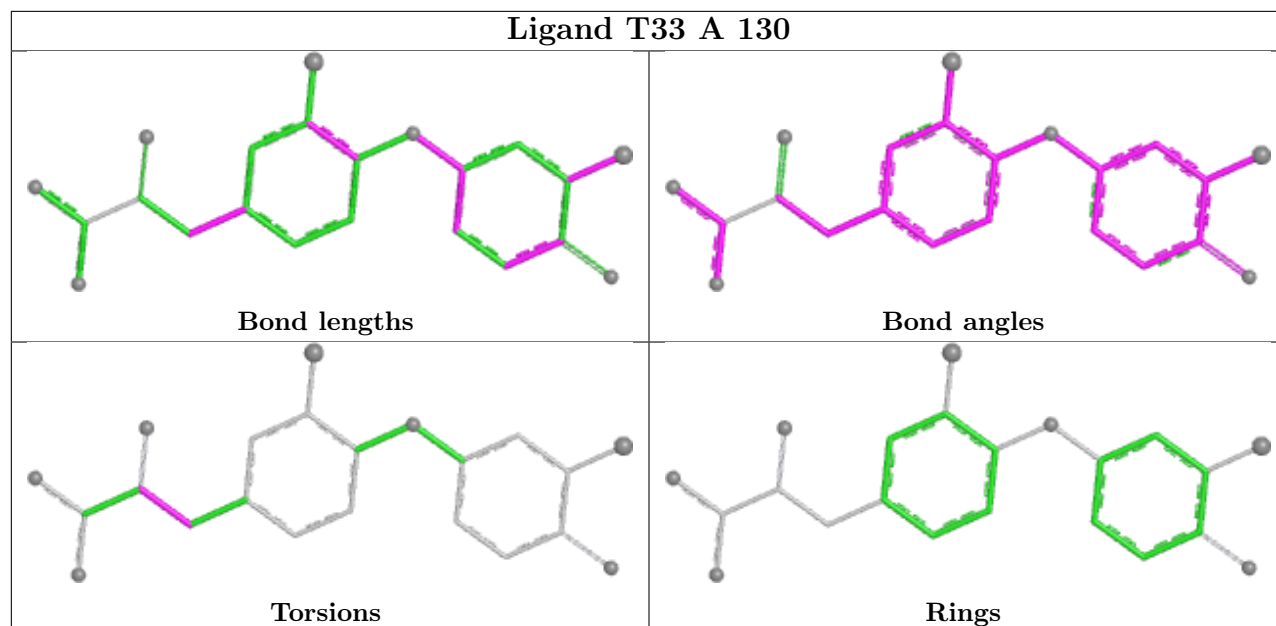
1 monomer is involved in 2 short contacts:



Mol	Chain	Res	Type	Clashes	Symm-Clashes
2	B	130	T33	2	0

The following is a two-dimensional graphical depiction of Mogul quality analysis of bond lengths, bond angles, torsion angles, and ring geometry for all instances of the Ligand of Interest. In addition, ligands with molecular weight > 250 and outliers as shown on the validation Tables will also be included. For torsion angles, if less than 5% of the Mogul distribution of torsion angles is within 10 degrees of the torsion angle in question, then that torsion angle is considered an outlier. Any bond that is central to one or more torsion angles identified as an outlier by Mogul will be highlighted in the graph. For rings, the root-mean-square deviation (RMSD) between the ring in question and similar rings identified by Mogul is calculated over all ring torsion angles. If the average RMSD is greater than 60 degrees and the minimal RMSD between the ring in question and any Mogul-identified rings is also greater than 60 degrees, then that ring is considered an outlier. The outliers are highlighted in purple. The color gray indicates Mogul did not find sufficient equivalents in the CSD to analyse the geometry.





## 5.7 Other polymers [i](#)

There are no such residues in this entry.

## 5.8 Polymer linkage issues [i](#)

There are no chain breaks in this entry.

## 6 Fit of model and data [i](#)

### 6.1 Protein, DNA and RNA chains [i](#)

EDS was not executed - this section is therefore empty.

### 6.2 Non-standard residues in protein, DNA, RNA chains [i](#)

EDS was not executed - this section is therefore empty.

### 6.3 Carbohydrates [i](#)

EDS was not executed - this section is therefore empty.

### 6.4 Ligands [i](#)

EDS was not executed - this section is therefore empty.

### 6.5 Other polymers [i](#)

EDS was not executed - this section is therefore empty.