



Full wwPDB X-ray Structure Validation Report ⓘ

Aug 15, 2023 – 08:54 AM EDT

PDB ID : 1TE1
Title : Crystal structure of family 11 xylanase in complex with inhibitor (XIP-I)
Authors : Payan, F.; Leone, P.; Furniss, C.; Tahir, T.; Durand, A.; Porciero, S.; Manzanares, P.; Williamson, G.; Gilbert, H.J.; Juge, N.; Roussel, A.
Deposited on : 2004-05-24
Resolution : 2.50 Å(reported)

This is a Full wwPDB X-ray Structure Validation Report for a publicly released PDB entry.

We welcome your comments at validation@mail.wwpdb.org

A user guide is available at

<https://www.wwpdb.org/validation/2017/XrayValidationReportHelp>

with specific help available everywhere you see the ⓘ symbol.

The types of validation reports are described at

<http://www.wwpdb.org/validation/2017/FAQs#types>.

The following versions of software and data (see [references ⓘ](#)) were used in the production of this report:

MolProbity : 4.02b-467
Mogul : 1.8.5 (274361), CSD as541be (2020)
Xtriage (Phenix) : 1.13
EDS : 2.35
Percentile statistics : 20191225.v01 (using entries in the PDB archive December 25th 2019)
Refmac : 5.8.0158
CCP4 : 7.0.044 (Gargrove)
Ideal geometry (proteins) : Engh & Huber (2001)
Ideal geometry (DNA, RNA) : Parkinson et al. (1996)
Validation Pipeline (wwPDB-VP) : 2.35

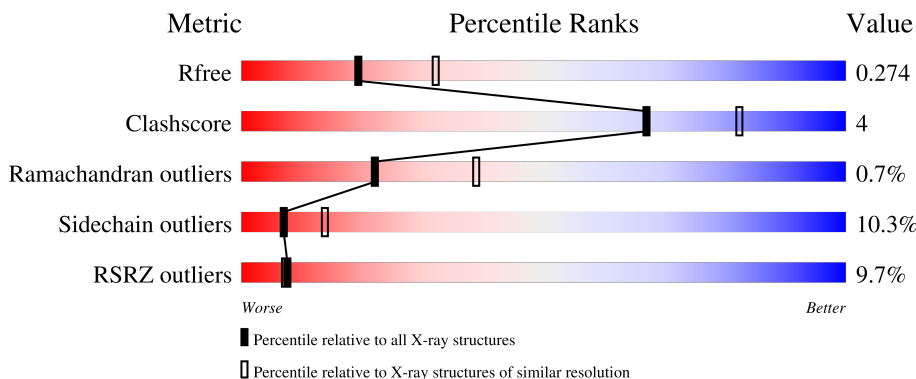
1 Overall quality at a glance

The following experimental techniques were used to determine the structure:

X-RAY DIFFRACTION

The reported resolution of this entry is 2.50 Å.

Percentile scores (ranging between 0-100) for global validation metrics of the entry are shown in the following graphic. The table shows the number of entries on which the scores are based.



Metric	Whole archive (#Entries)	Similar resolution (#Entries, resolution range(Å))
R_{free}	130704	4661 (2.50-2.50)
Clashscore	141614	5346 (2.50-2.50)
Ramachandran outliers	138981	5231 (2.50-2.50)
Sidechain outliers	138945	5233 (2.50-2.50)
RSRZ outliers	127900	4559 (2.50-2.50)

The table below summarises the geometric issues observed across the polymeric chains and their fit to the electron density. The red, orange, yellow and green segments of the lower bar indicate the fraction of residues that contain outliers for ≥ 3 , 2, 1 and 0 types of geometric quality criteria respectively. A grey segment represents the fraction of residues that are not modelled. The numeric value for each fraction is indicated below the corresponding segment, with a dot representing fractions $\leq 5\%$. The upper red bar (where present) indicates the fraction of residues that have poor fit to the electron density. The numeric value is given above the bar.

Mol	Chain	Length	Quality of chain
1	A	274	
2	B	190	

The following table lists non-polymeric compounds, carbohydrate monomers and non-standard residues in protein, DNA, RNA chains that are outliers for geometric or electron-density-fit criteria:

Mol	Type	Chain	Res	Chirality	Geometry	Clashes	Electron density
3	NAG	A	901	X	-	-	-

2 Entry composition [i](#)

There are 5 unique types of molecules in this entry. The entry contains 3875 atoms, of which 0 are hydrogens and 0 are deuteriums.

In the tables below, the ZeroOcc column contains the number of atoms modelled with zero occupancy, the AltConf column contains the number of residues with at least one atom in alternate conformation and the Trace column contains the number of residues modelled with at most 2 atoms.

- Molecule 1 is a protein called xylanase inhibitor protein I.

Mol	Chain	Residues	Atoms					ZeroOcc	AltConf	Trace
			Total	C	N	O	S			
1	A	274	2144	1369	373	394	8	0	0	0

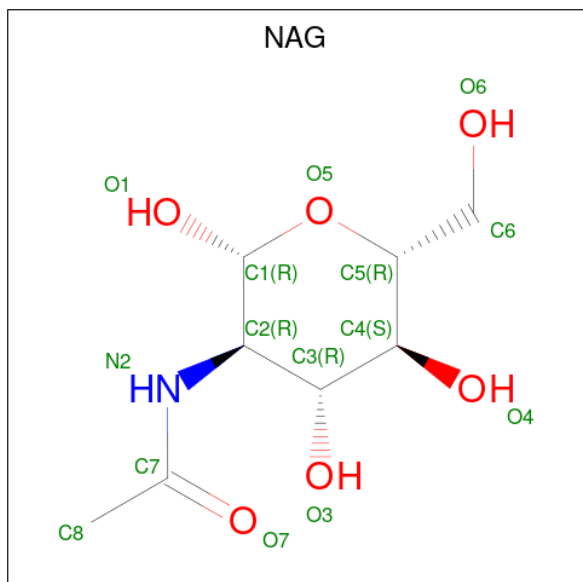
There are 2 discrepancies between the modelled and reference sequences:

Chain	Residue	Modelled	Actual	Comment	Reference
A	37	PHE	LEU	SEE REMARK 999	UNP Q8L5C6
A	184	VAL	ALA	SEE REMARK 999	UNP Q8L5C6

- Molecule 2 is a protein called endo-1,4-xylanase.

Mol	Chain	Residues	Atoms					ZeroOcc	AltConf	Trace
			Total	C	N	O	S			
2	B	190	1460	913	231	313	3	0	1	0

- Molecule 3 is 2-acetamido-2-deoxy-beta-D-glucopyranose (three-letter code: NAG) (formula: $C_8H_{15}NO_6$).



Mol	Chain	Residues	Atoms				ZeroOcc	AltConf
3	A	1	Total	C	N	O	0	0
			14	8	1	5		
3	A	1	Total	C	N	O	0	0
			14	8	1	5		

- Molecule 4 is 1,2-ETHANEDIOL (three-letter code: EDO) (formula: C₂H₆O₂).



Mol	Chain	Residues	Atoms			ZeroOcc	AltConf
4	A	1	Total	C	O	0	0
			4	2	2		
4	A	1	Total	C	O	0	0
			4	2	2		
4	A	1	Total	C	O	0	0
			4	2	2		
4	A	1	Total	C	O	0	0
			4	2	2		
4	A	1	Total	C	O	0	0
			4	2	2		
4	A	1	Total	C	O	0	0
			4	2	2		
4	B	1	Total	C	O	0	0
			4	2	2		
4	B	1	Total	C	O	0	0
			4	2	2		
4	B	1	Total	C	O	0	0
			4	2	2		

Continued on next page...

Continued from previous page...

Mol	Chain	Residues	Atoms			ZeroOcc	AltConf
4	B	1	Total	C	O	0	0
			4	2	2		

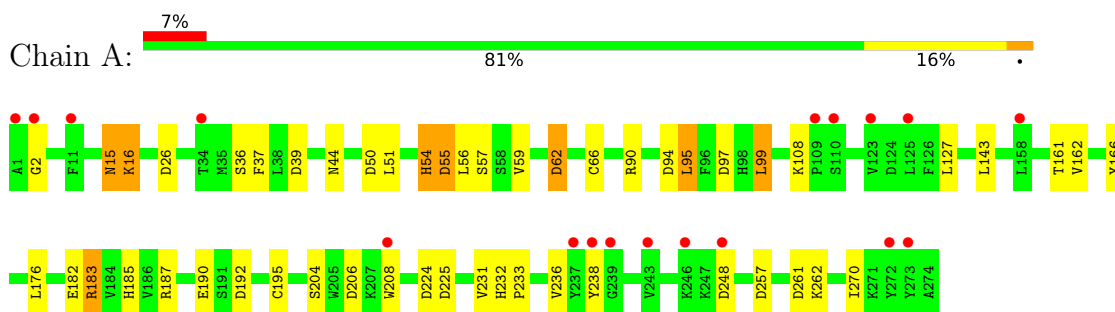
- Molecule 5 is water.

Mol	Chain	Residues	Atoms		ZeroOcc	AltConf
5	A	139	Total	O	0	0
			139	139		
5	B	60	Total	O	0	0
			60	60		

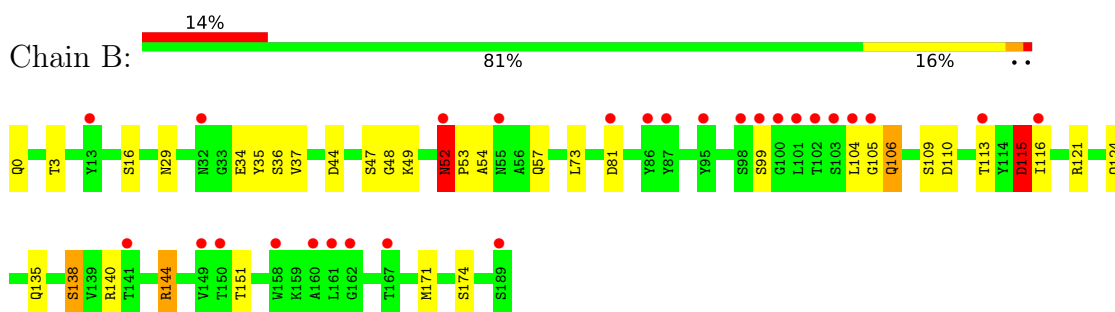
3 Residue-property plots [i](#)

These plots are drawn for all protein, RNA, DNA and oligosaccharide chains in the entry. The first graphic for a chain summarises the proportions of the various outlier classes displayed in the second graphic. The second graphic shows the sequence view annotated by issues in geometry and electron density. Residues are color-coded according to the number of geometric quality criteria for which they contain at least one outlier: green = 0, yellow = 1, orange = 2 and red = 3 or more. A red dot above a residue indicates a poor fit to the electron density ($RSRZ > 2$). Stretches of 2 or more consecutive residues without any outlier are shown as a green connector. Residues present in the sample, but not in the model, are shown in grey.

- Molecule 1: xylanase inhibitor protein I



- Molecule 2: endo-1,4-xylanase



4 Data and refinement statistics

Property	Value	Source
Space group	P 43 21 2	Depositor
Cell constants a, b, c, α , β , γ	98.75Å 98.75Å 112.09Å 90.00° 90.00° 90.00°	Depositor
Resolution (Å)	20.00 – 2.50 29.63 – 2.50	Depositor EDS
% Data completeness (in resolution range)	99.7 (20.00-2.50) 99.7 (29.63-2.50)	Depositor EDS
R_{merge}	0.07	Depositor
R_{sym}	0.07	Depositor
$\langle I/\sigma(I) \rangle$ ¹	3.56 (at 2.51Å)	Xtrriage
Refinement program	REFMAC 5.1.24	Depositor
R, R_{free}	0.208 , 0.271 0.214 , 0.274	Depositor DCC
R_{free} test set	1430 reflections (7.25%)	wwPDB-VP
Wilson B-factor (Å ²)	49.2	Xtrriage
Anisotropy	0.122	Xtrriage
Bulk solvent k_{sol} (e/Å ³), B_{sol} (Å ²)	0.31 , 44.5	EDS
L-test for twinning ²	$\langle L \rangle = 0.48$, $\langle L^2 \rangle = 0.31$	Xtrriage
Estimated twinning fraction	No twinning to report.	Xtrriage
F_o, F_c correlation	0.94	EDS
Total number of atoms	3875	wwPDB-VP
Average B, all atoms (Å ²)	30.0	wwPDB-VP

Xtrriage's analysis on translational NCS is as follows: *The largest off-origin peak in the Patterson function is 3.67% of the height of the origin peak. No significant pseudotranslation is detected.*

¹Intensities estimated from amplitudes.

²Theoretical values of $\langle |L| \rangle$, $\langle L^2 \rangle$ for acentric reflections are 0.5, 0.333 respectively for untwinned datasets, and 0.375, 0.2 for perfectly twinned datasets.

5 Model quality [i](#)

5.1 Standard geometry [i](#)

Bond lengths and bond angles in the following residue types are not validated in this section: NAG, EDO

The Z score for a bond length (or angle) is the number of standard deviations the observed value is removed from the expected value. A bond length (or angle) with $|Z| > 5$ is considered an outlier worth inspection. RMSZ is the root-mean-square of all Z scores of the bond lengths (or angles).

Mol	Chain	Bond lengths		Bond angles	
		RMSZ	# Z >5	RMSZ	# Z >5
1	A	0.39	0/2212	0.75	12/3005 (0.4%)
2	B	0.38	0/1505	0.70	4/2059 (0.2%)
All	All	0.39	0/3717	0.73	16/5064 (0.3%)

There are no bond length outliers.

All (16) bond angle outliers are listed below:

Mol	Chain	Res	Type	Atoms	Z	Observed(°)	Ideal(°)
1	A	224	ASP	CB-CG-OD2	7.07	124.66	118.30
1	A	94	ASP	CB-CG-OD2	6.54	124.19	118.30
1	A	39	ASP	CB-CG-OD2	5.99	123.69	118.30
1	A	26	ASP	CB-CG-OD2	5.97	123.67	118.30
1	A	97	ASP	CB-CG-OD2	5.96	123.67	118.30
1	A	248	ASP	CB-CG-OD2	5.93	123.64	118.30
1	A	225	ASP	CB-CG-OD2	5.66	123.39	118.30
1	A	192	ASP	CB-CG-OD2	5.53	123.28	118.30
2	B	115	ASP	CB-CG-OD2	5.50	123.25	118.30
1	A	261	ASP	CB-CG-OD2	5.49	123.25	118.30
1	A	62	ASP	CB-CG-OD2	5.34	123.11	118.30
2	B	110	ASP	CB-CG-OD2	5.31	123.08	118.30
1	A	257	ASP	CB-CG-OD2	5.25	123.02	118.30
1	A	50	ASP	CB-CG-OD2	5.21	122.99	118.30
2	B	44	ASP	CB-CG-OD2	5.10	122.89	118.30
2	B	81	ASP	CB-CG-OD2	5.09	122.88	118.30

There are no chirality outliers.

There are no planarity outliers.

5.2 Too-close contacts

In the following table, the Non-H and H(model) columns list the number of non-hydrogen atoms and hydrogen atoms in the chain respectively. The H(added) column lists the number of hydrogen atoms added and optimized by MolProbity. The Clashes column lists the number of clashes within the asymmetric unit, whereas Symm-Clashes lists symmetry-related clashes.

Mol	Chain	Non-H	H(model)	H(added)	Clashes	Symm-Clashes
1	A	2144	0	2037	14	0
2	B	1460	0	1318	14	0
3	A	28	0	26	0	0
4	A	28	0	42	0	0
4	B	16	0	24	1	0
5	A	139	0	0	1	0
5	B	60	0	0	1	0
All	All	3875	0	3447	28	0

The all-atom clashscore is defined as the number of clashes found per 1000 atoms (including hydrogen atoms). The all-atom clashscore for this structure is 4.

All (28) close contacts within the same asymmetric unit are listed below, sorted by their clash magnitude.

Atom-1	Atom-2	Interatomic distance (Å)	Clash overlap (Å)
2:B:52:ASN:HB3	2:B:53:PRO:CD	2.23	0.68
1:A:161:THR:HG22	1:A:187:ARG:HD3	1.77	0.66
2:B:52:ASN:HB3	2:B:53:PRO:HD3	1.84	0.59
2:B:104:LEU:HB2	2:B:116:ILE:O	2.06	0.56
1:A:162:VAL:O	1:A:187:ARG:HG3	2.07	0.55
2:B:115:ASP:O	2:B:138:SER:HA	2.07	0.55
2:B:151:THR:HG21	2:B:171:MET:SD	2.47	0.54
1:A:15:ASN:HD22	1:A:16:LYS:N	2.07	0.52
1:A:51:LEU:O	1:A:54:HIS:HB2	2.10	0.50
1:A:182:GLU:OE1	1:A:183:ARG:HD3	2.14	0.48
2:B:52:ASN:O	2:B:54:ALA:N	2.47	0.48
1:A:166:TYR:HD1	1:A:208:TRP:CD2	2.32	0.47
2:B:47:SER:O	2:B:174:SER:HA	2.13	0.47
2:B:0:GLN:HG2	5:B:269:HOH:O	2.16	0.46
2:B:29:ASN:ND2	2:B:49:LYS:HE3	2.31	0.45
1:A:161:THR:HG23	1:A:185:HIS:HB2	1.99	0.45
1:A:95:LEU:HD22	1:A:99:LEU:HD22	1.98	0.45
2:B:116:ILE:HB	4:B:210:EDO:H22	1.98	0.45
2:B:121:ARG:HB3	2:B:124:GLN:HG3	2.00	0.44
1:A:166:TYR:HD1	1:A:208:TRP:CE2	2.35	0.44

Continued on next page...

Continued from previous page...

Atom-1	Atom-2	Interatomic distance (Å)	Clash overlap (Å)
1:A:185:HIS:HE1	5:A:913:HOH:O	1.99	0.44
1:A:236:VAL:HG11	1:A:270:ILE:HD12	1.98	0.44
2:B:105:GLY:HA3	2:B:106:GLN:HE21	1.82	0.43
1:A:232:HIS:ND1	1:A:233:PRO:HD2	2.33	0.43
2:B:35:TYR:CE2	2:B:48:GLY:HA2	2.54	0.42
1:A:36:SER:HA	1:A:37:PHE:HA	1.93	0.41
1:A:62:ASP:O	1:A:66:CYS:SG	2.78	0.41
2:B:140:ARG:CZ	2:B:144:ARG:HD2	2.51	0.41

There are no symmetry-related clashes.

5.3 Torsion angles [i](#)

5.3.1 Protein backbone [i](#)

In the following table, the Percentiles column shows the percent Ramachandran outliers of the chain as a percentile score with respect to all X-ray entries followed by that with respect to entries of similar resolution.

The Analysed column shows the number of residues for which the backbone conformation was analysed, and the total number of residues.

Mol	Chain	Analysed	Favoured	Allowed	Outliers	Percentiles	
1	A	272/274 (99%)	256 (94%)	14 (5%)	2 (1%)	22	39
2	B	189/190 (100%)	171 (90%)	17 (9%)	1 (0%)	29	48
All	All	461/464 (99%)	427 (93%)	31 (7%)	3 (1%)	22	39

All (3) Ramachandran outliers are listed below:

Mol	Chain	Res	Type
1	A	2	GLY
1	A	55	ASP
2	B	52	ASN

5.3.2 Protein sidechains [i](#)

In the following table, the Percentiles column shows the percent sidechain outliers of the chain as a percentile score with respect to all X-ray entries followed by that with respect to entries of similar resolution.

The Analysed column shows the number of residues for which the sidechain conformation was analysed, and the total number of residues.

Mol	Chain	Analysed	Rotameric	Outliers	Percentiles	
1	A	220/220 (100%)	197 (90%)	23 (10%)	7	13
2	B	158/157 (101%)	141 (89%)	17 (11%)	6	12
All	All	378/377 (100%)	338 (89%)	40 (11%)	7	13

All (40) residues with a non-rotameric sidechain are listed below:

Mol	Chain	Res	Type
1	A	15	ASN
1	A	16	LYS
1	A	44	ASN
1	A	54	HIS
1	A	55	ASP
1	A	56	LEU
1	A	57	SER
1	A	59	VAL
1	A	90	ARG
1	A	95	LEU
1	A	99	LEU
1	A	108	LYS
1	A	127	LEU
1	A	143	LEU
1	A	176	LEU
1	A	183	ARG
1	A	190	GLU
1	A	195	CYS
1	A	204	SER
1	A	206	ASP
1	A	231	VAL
1	A	238	TYR
1	A	262	LYS
2	B	3	THR
2	B	16	SER
2	B	34	GLU
2	B	36[A]	SER
2	B	36[B]	SER
2	B	37	VAL
2	B	52	ASN
2	B	57	GLN
2	B	73	LEU
2	B	99	SER

Continued on next page...

Continued from previous page...

Mol	Chain	Res	Type
2	B	106	GLN
2	B	109	SER
2	B	113	THR
2	B	115	ASP
2	B	135	GLN
2	B	138	SER
2	B	144	ARG

Sometimes sidechains can be flipped to improve hydrogen bonding and reduce clashes. All (11) such sidechains are listed below:

Mol	Chain	Res	Type
1	A	15	ASN
1	A	44	ASN
1	A	185	HIS
1	A	245	GLN
2	B	0	GLN
2	B	6	GLN
2	B	29	ASN
2	B	52	ASN
2	B	57	GLN
2	B	70	ASN
2	B	106	GLN

5.3.3 RNA [i](#)

There are no RNA molecules in this entry.

5.4 Non-standard residues in protein, DNA, RNA chains [i](#)

There are no non-standard protein/DNA/RNA residues in this entry.

5.5 Carbohydrates [i](#)

There are no monosaccharides in this entry.

5.6 Ligand geometry [i](#)

13 ligands are modelled in this entry.

In the following table, the Counts columns list the number of bonds (or angles) for which Mogul statistics could be retrieved, the number of bonds (or angles) that are observed in the model and the number of bonds (or angles) that are defined in the Chemical Component Dictionary. The Link column lists molecule types, if any, to which the group is linked. The Z score for a bond length (or angle) is the number of standard deviations the observed value is removed from the expected value. A bond length (or angle) with $|Z| > 2$ is considered an outlier worth inspection. RMSZ is the root-mean-square of all Z scores of the bond lengths (or angles).

Mol	Type	Chain	Res	Link	Bond lengths			Bond angles		
					Counts	RMSZ	$\# Z > 2$	Counts	RMSZ	$\# Z > 2$
4	EDO	A	905	-	3,3,3	0.39	0	2,2,2	0.31	0
4	EDO	A	908	-	3,3,3	0.36	0	2,2,2	0.48	0
4	EDO	B	211	-	3,3,3	0.47	0	2,2,2	0.11	0
4	EDO	A	902	-	3,3,3	0.36	0	2,2,2	0.37	0
4	EDO	A	903	-	3,3,3	0.38	0	2,2,2	0.33	0
4	EDO	B	210	-	3,3,3	0.39	0	2,2,2	0.29	0
3	NAG	A	901	1	14,14,15	0.57	0	17,19,21	0.89	1 (5%)
4	EDO	B	207	-	3,3,3	0.39	0	2,2,2	0.23	0
4	EDO	A	906	-	3,3,3	0.37	0	2,2,2	0.35	0
3	NAG	A	900	1	14,14,15	0.44	0	17,19,21	1.10	1 (5%)
4	EDO	A	907	-	3,3,3	0.37	0	2,2,2	0.45	0
4	EDO	A	904	-	3,3,3	0.44	0	2,2,2	0.07	0
4	EDO	B	208	-	3,3,3	0.37	0	2,2,2	0.31	0

In the following table, the Chirals column lists the number of chiral outliers, the number of chiral centers analysed, the number of these observed in the model and the number defined in the Chemical Component Dictionary. Similar counts are reported in the Torsion and Rings columns. '-' means no outliers of that kind were identified.

Mol	Type	Chain	Res	Link	Chirals	Torsions	Rings
4	EDO	A	905	-	-	1/1/1/1	-
4	EDO	A	908	-	-	1/1/1/1	-
4	EDO	B	211	-	-	1/1/1/1	-
4	EDO	A	902	-	-	1/1/1/1	-
4	EDO	A	903	-	-	1/1/1/1	-
4	EDO	B	210	-	-	1/1/1/1	-
3	NAG	A	901	1	1/1/5/7	4/6/23/26	0/1/1/1
4	EDO	B	207	-	-	0/1/1/1	-
4	EDO	A	906	-	-	1/1/1/1	-
3	NAG	A	900	1	-	1/6/23/26	0/1/1/1
4	EDO	A	907	-	-	0/1/1/1	-
4	EDO	A	904	-	-	1/1/1/1	-
4	EDO	B	208	-	-	1/1/1/1	-

There are no bond length outliers.

All (2) bond angle outliers are listed below:

Mol	Chain	Res	Type	Atoms	Z	Observed(°)	Ideal(°)
3	A	900	NAG	O5-C1-C2	-2.72	107.00	111.29
3	A	901	NAG	O5-C5-C6	2.02	110.37	107.20

All (1) chirality outliers are listed below:

Mol	Chain	Res	Type	Atom
3	A	901	NAG	C1

All (14) torsion outliers are listed below:

Mol	Chain	Res	Type	Atoms
3	A	901	NAG	C8-C7-N2-C2
3	A	901	NAG	O7-C7-N2-C2
4	A	904	EDO	O1-C1-C2-O2
4	A	905	EDO	O1-C1-C2-O2
4	A	908	EDO	O1-C1-C2-O2
3	A	901	NAG	C4-C5-C6-O6
3	A	900	NAG	O5-C5-C6-O6
4	A	903	EDO	O1-C1-C2-O2
3	A	901	NAG	O5-C5-C6-O6
4	B	211	EDO	O1-C1-C2-O2
4	B	210	EDO	O1-C1-C2-O2
4	A	906	EDO	O1-C1-C2-O2
4	B	208	EDO	O1-C1-C2-O2
4	A	902	EDO	O1-C1-C2-O2

There are no ring outliers.

1 monomer is involved in 1 short contact:

Mol	Chain	Res	Type	Clashes	Symm-Clashes
4	B	210	EDO	1	0

5.7 Other polymers [\(i\)](#)

There are no such residues in this entry.

5.8 Polymer linkage issues

There are no chain breaks in this entry.

6 Fit of model and data

6.1 Protein, DNA and RNA chains

In the following table, the column labelled ‘#RSRZ > 2’ contains the number (and percentage) of RSRZ outliers, followed by percent RSRZ outliers for the chain as percentile scores relative to all X-ray entries and entries of similar resolution. The OWAB column contains the minimum, median, 95th percentile and maximum values of the occupancy-weighted average B-factor per residue. The column labelled ‘Q < 0.9’ lists the number of (and percentage) of residues with an average occupancy less than 0.9.

Mol	Chain	Analysed	<RSRZ>	#RSRZ>2	OWAB(Å ²)	Q<0.9
1	A	274/274 (100%)	0.23	18 (6%) 18 19	15, 23, 31, 35	0
2	B	190/190 (100%)	0.59	27 (14%) 2 2	21, 31, 54, 60	0
All	All	464/464 (100%)	0.38	45 (9%) 7 7	15, 26, 45, 60	0

All (45) RSRZ outliers are listed below:

Mol	Chain	Res	Type	RSRZ
1	A	238	TYR	5.1
1	A	237	TYR	5.0
2	B	99	SER	4.8
2	B	160	ALA	4.4
2	B	105	GLY	4.3
2	B	100	GLY	3.9
1	A	1	ALA	3.7
1	A	110	SER	3.5
1	A	272	TYR	3.5
2	B	86	TYR	3.2
2	B	141	THR	3.2
2	B	101	LEU	3.1
1	A	273	TYR	3.1
1	A	2	GLY	3.0
2	B	95	TYR	3.0
2	B	102	THR	3.0
2	B	162	GLY	2.9
2	B	104	LEU	2.7
2	B	81	ASP	2.7
1	A	125	LEU	2.7
2	B	116	ILE	2.7
2	B	52	ASN	2.7
2	B	189	SER	2.6
1	A	246	LYS	2.5

Continued on next page...

Continued from previous page...

Mol	Chain	Res	Type	RSRZ
2	B	13	TYR	2.5
1	A	243	VAL	2.5
2	B	103	SER	2.5
2	B	158	TRP	2.4
2	B	150	THR	2.4
2	B	98	SER	2.4
1	A	11	PHE	2.4
2	B	55	ASN	2.3
1	A	158	LEU	2.3
2	B	32	ASN	2.2
2	B	149	VAL	2.2
1	A	208	TRP	2.2
1	A	34	THR	2.2
1	A	239	GLY	2.2
1	A	123	VAL	2.2
2	B	167	THR	2.1
2	B	87	TYR	2.1
1	A	109	PRO	2.1
2	B	113	THR	2.1
1	A	248	ASP	2.1
2	B	161	LEU	2.0

6.2 Non-standard residues in protein, DNA, RNA chains [i](#)

There are no non-standard protein/DNA/RNA residues in this entry.

6.3 Carbohydrates [i](#)

There are no monosaccharides in this entry.

6.4 Ligands [i](#)

In the following table, the Atoms column lists the number of modelled atoms in the group and the number defined in the chemical component dictionary. The B-factors column lists the minimum, median, 95th percentile and maximum values of B factors of atoms in the group. The column labelled 'Q< 0.9' lists the number of atoms with occupancy less than 0.9.

Mol	Type	Chain	Res	Atoms	RSCC	RSR	B-factors(Å ²)	Q<0.9
4	EDO	A	903	4/4	0.63	0.20	90,91,91,91	0
4	EDO	A	904	4/4	0.74	0.13	87,87,87,87	0

Continued on next page...

Continued from previous page...

Mol	Type	Chain	Res	Atoms	RSCC	RSR	B-factors(\AA^2)	Q<0.9
4	EDO	B	207	4/4	0.83	0.26	95,96,96,96	0
4	EDO	A	906	4/4	0.84	0.16	87,87,87,87	0
3	NAG	A	901	14/15	0.84	0.32	66,74,77,78	0
4	EDO	A	908	4/4	0.86	0.36	87,88,88,88	0
4	EDO	A	905	4/4	0.86	0.33	95,96,96,96	0
4	EDO	B	208	4/4	0.86	0.27	81,82,83,83	0
4	EDO	A	902	4/4	0.87	0.47	76,78,78,78	0
4	EDO	B	210	4/4	0.89	0.34	64,64,65,65	0
4	EDO	B	211	4/4	0.91	0.23	67,67,67,68	0
4	EDO	A	907	4/4	0.93	0.40	73,73,73,74	0
3	NAG	A	900	14/15	0.93	0.14	58,65,68,70	2

6.5 Other polymers [\(i\)](#)

There are no such residues in this entry.