



# Full wwPDB X-ray Structure Validation Report ⓘ

Jun 15, 2024 – 11:11 PM EDT

PDB ID : 1RCM  
Title : CRYSTAL STRUCTURE OF A UBIQUITIN-DEPENDENT DEGRADATION SUBSTRATE: A THREE-DISULFIDE FORM OF LYSOZYME  
Authors : Hill, C.P.; Johnston, N.L.; Cohen, R.E.  
Deposited on : 1993-01-10  
Resolution : 1.90 Å(reported)

This is a Full wwPDB X-ray Structure Validation Report for a publicly released PDB entry.

We welcome your comments at [validation@mail.wwpdb.org](mailto:validation@mail.wwpdb.org)

A user guide is available at

<https://www.wwpdb.org/validation/2017/XrayValidationReportHelp>

with specific help available everywhere you see the ⓘ symbol.

The types of validation reports are described at

<http://www.wwpdb.org/validation/2017/FAQs#types>.

---

The following versions of software and data (see [references ⓘ](#)) were used in the production of this report:

MolProbity : 4.02b-467  
Mogul : 2022.3.0, CSD as543be (2022)  
Xtriage (Phenix) : 1.20.1  
EDS : 2.37.1  
Percentile statistics : 20191225.v01 (using entries in the PDB archive December 25th 2019)  
Refmac : 5.8.0158  
CCP4 : 7.0.044 (Gargrove)  
Ideal geometry (proteins) : Engh & Huber (2001)  
Ideal geometry (DNA, RNA) : Parkinson et al. (1996)  
Validation Pipeline (wwPDB-VP) : 2.37.1

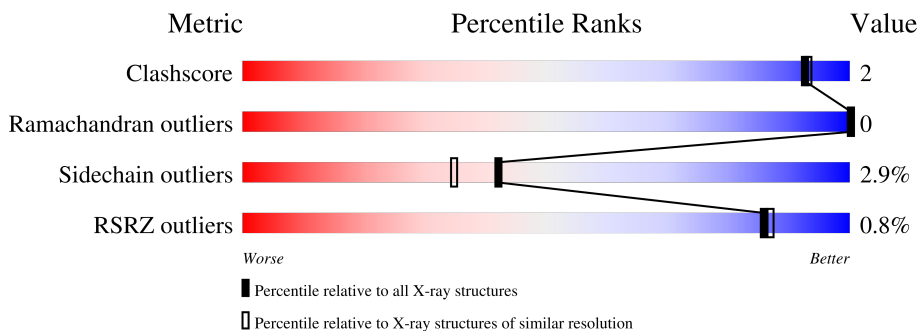
# 1 Overall quality at a glance

The following experimental techniques were used to determine the structure:

*X-RAY DIFFRACTION*



The reported resolution of this entry is 1.90 Å.

Percentile scores (ranging between 0-100) for global validation metrics of the entry are shown in the following graphic. The table shows the number of entries on which the scores are based.



Metric	Whole archive (#Entries)	Similar resolution (#Entries, resolution range(Å))
Clashscore	141614	6847 (1.90-1.90)
Ramachandran outliers	138981	6760 (1.90-1.90)
Sidechain outliers	138945	6760 (1.90-1.90)
RSRZ outliers	127900	6082 (1.90-1.90)

The table below summarises the geometric issues observed across the polymeric chains and their fit to the electron density. The red, orange, yellow and green segments of the lower bar indicate the fraction of residues that contain outliers for  $\geq 3$ , 2, 1 and 0 types of geometric quality criteria respectively. A grey segment represents the fraction of residues that are not modelled. The numeric value for each fraction is indicated below the corresponding segment, with a dot representing fractions  $\leq 5\%$ . The upper red bar (where present) indicates the fraction of residues that have poor fit to the electron density. The numeric value is given above the bar.

Mol	Chain	Length	Quality of chain
1	A	129	 85% 14% •
1	B	129	 2% 85% 14% •

## 2 Entry composition [i](#)

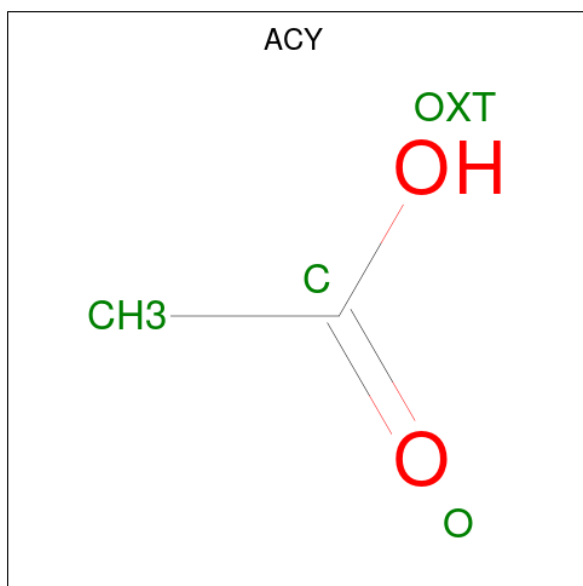
There are 3 unique types of molecules in this entry. The entry contains 2143 atoms, of which 0 are hydrogens and 0 are deuteriums.

In the tables below, the ZeroOcc column contains the number of atoms modelled with zero occupancy, the AltConf column contains the number of residues with at least one atom in alternate conformation and the Trace column contains the number of residues modelled with at most 2 atoms.

- Molecule 1 is a protein called HEN EGG WHITE LYSOZYME.

Mol	Chain	Residues	Atoms					ZeroOcc	AltConf	Trace
			Total	C	N	O	S			
1	A	129	Total 1001	C 613	N 193	O 185	S 10	0	0	0
1	B	129	Total 1001	C 613	N 193	O 185	S 10	0	0	0

- Molecule 2 is ACETIC ACID (three-letter code: ACY) (formula: C<sub>2</sub>H<sub>4</sub>O<sub>2</sub>).



Mol	Chain	Residues	Atoms			ZeroOcc	AltConf
			Total	C	O		
2	A	1	Total 4	C 2	O 2	0	0
2	B	1	Total 4	C 2	O 2	0	0


- Molecule 3 is water.

<b>Mol</b>	<b>Chain</b>	<b>Residues</b>	<b>Atoms</b>		<b>ZeroOcc</b>	<b>AltConf</b>
3	A	79	Total 79	O 79	0	0
3	B	54	Total 54	O 54	0	0

### 3 Residue-property plots [i](#)


These plots are drawn for all protein, RNA, DNA and oligosaccharide chains in the entry. The first graphic for a chain summarises the proportions of the various outlier classes displayed in the second graphic. The second graphic shows the sequence view annotated by issues in geometry and electron density. Residues are color-coded according to the number of geometric quality criteria for which they contain at least one outlier: green = 0, yellow = 1, orange = 2 and red = 3 or more. A red dot above a residue indicates a poor fit to the electron density ( $RSRZ > 2$ ). Stretches of 2 or more consecutive residues without any outlier are shown as a green connector. Residues present in the sample, but not in the model, are shown in grey.

- Molecule 1: HEN EGG WHITE LYSOZYME

Chain A: 



- Molecule 1: HEN EGG WHITE LYSOZYME

Chain B: 



## 4 Data and refinement statistics i

Property	Value	Source
Space group	P 21 21 21	Depositor
Cell constants a, b, c, $\alpha$ , $\beta$ , $\gamma$	77.70Å 81.30Å 38.00Å 90.00° 90.00° 90.00°	Depositor
Resolution (Å)	(Not available) – 1.90 9.99 – 1.90	Depositor EDS
% Data completeness (in resolution range)	(Not available) ((Not available)-1.90) 94.0 (9.99-1.90)	Depositor EDS
$R_{merge}$	(Not available)	Depositor
$R_{sym}$	(Not available)	Depositor
$\langle I/\sigma(I) \rangle$ <sup>1</sup>	4.23 (at 1.90Å)	Xtrriage
Refinement program	X-PLOR	Depositor
R, $R_{free}$	0.185 , (Not available) 0.164 , (Not available)	Depositor DCC
$R_{free}$ test set	No test flags present.	wwPDB-VP
Wilson B-factor (Å <sup>2</sup> )	25.2	Xtrriage
Anisotropy	0.087	Xtrriage
Bulk solvent $k_{sol}$ (e/Å <sup>3</sup> ), $B_{sol}$ (Å <sup>2</sup> )	0.32 , 61.0	EDS
L-test for twinning <sup>2</sup>	$\langle  L  \rangle = 0.49$ , $\langle L^2 \rangle = 0.32$	Xtrriage
Estimated twinning fraction	0.032 for k,h,-l	Xtrriage
$F_o, F_c$ correlation	0.97	EDS
Total number of atoms	2143	wwPDB-VP
Average B, all atoms (Å <sup>2</sup> )	25.0	wwPDB-VP

Xtrriage's analysis on translational NCS is as follows: *The largest off-origin peak in the Patterson function is 7.18% of the height of the origin peak. No significant pseudotranslation is detected.*

<sup>1</sup>Intensities estimated from amplitudes.

<sup>2</sup>Theoretical values of  $\langle |L| \rangle$ ,  $\langle L^2 \rangle$  for acentric reflections are 0.5, 0.333 respectively for untwinned datasets, and 0.375, 0.2 for perfectly twinned datasets.

## 5 Model quality [i](#)

### 5.1 Standard geometry [i](#)

Bond lengths and bond angles in the following residue types are not validated in this section: ACY

The Z score for a bond length (or angle) is the number of standard deviations the observed value is removed from the expected value. A bond length (or angle) with  $|Z| > 5$  is considered an outlier worth inspection. RMSZ is the root-mean-square of all Z scores of the bond lengths (or angles).

Mol	Chain	Bond lengths		Bond angles	
		RMSZ	# Z  >5	RMSZ	# Z  >5
1	A	0.84	0/1021	1.69	29/1379 (2.1%)
1	B	0.83	0/1021	1.61	31/1379 (2.2%)
All	All	0.83	0/2042	1.65	60/2758 (2.2%)

There are no bond length outliers.

All (60) bond angle outliers are listed below:

Mol	Chain	Res	Type	Atoms	Z	Observed(°)	Ideal(°)
1	A	62	TRP	CD1-CG-CD2	9.49	113.89	106.30
1	B	111	TRP	CD1-CG-CD2	8.77	113.31	106.30
1	A	111	TRP	CD1-CG-CD2	8.58	113.16	106.30
1	A	63	TRP	CD1-CG-CD2	8.45	113.06	106.30
1	B	5	ARG	NE-CZ-NH1	8.40	124.50	120.30
1	B	63	TRP	CD1-CG-CD2	8.23	112.89	106.30
1	B	111	TRP	CE2-CD2-CG	-8.18	100.75	107.30
1	A	62	TRP	CE2-CD2-CG	-7.98	100.92	107.30
1	A	112	ARG	NE-CZ-NH2	-7.65	116.47	120.30
1	B	62	TRP	CD1-CG-CD2	7.65	112.42	106.30
1	B	108	TRP	CD1-CG-CD2	7.54	112.33	106.30
1	A	112	ARG	NE-CZ-NH1	7.48	124.04	120.30
1	A	63	TRP	CE2-CD2-CG	-7.33	101.44	107.30
1	A	123	TRP	CD1-CG-CD2	7.27	112.12	106.30
1	A	108	TRP	CE2-CD2-CG	-7.27	101.49	107.30
1	A	5	ARG	NE-CZ-NH2	-7.21	116.69	120.30
1	A	108	TRP	CD1-CG-CD2	7.21	112.07	106.30
1	A	111	TRP	CE2-CD2-CG	-7.03	101.68	107.30
1	B	123	TRP	CE2-CD2-CG	-7.00	101.70	107.30
1	A	28	TRP	CD1-CG-CD2	6.96	111.87	106.30
1	A	28	TRP	CE2-CD2-CG	-6.95	101.74	107.30
1	B	5	ARG	NE-CZ-NH2	-6.91	116.84	120.30

*Continued on next page...*

*Continued from previous page...*

Mol	Chain	Res	Type	Atoms	Z	Observed(°)	Ideal(°)
1	B	101	ASP	N-CA-CB	-6.90	98.18	110.60
1	B	123	TRP	CD1-CG-CD2	6.89	111.81	106.30
1	B	62	TRP	CE2-CD2-CG	-6.86	101.81	107.30
1	B	28	TRP	CD1-CG-CD2	6.81	111.75	106.30
1	B	108	TRP	CE2-CD2-CG	-6.79	101.86	107.30
1	A	123	TRP	CE2-CD2-CG	-6.78	101.88	107.30
1	B	21	ARG	NE-CZ-NH1	6.75	123.68	120.30
1	A	111	TRP	CG-CD1-NE1	-6.62	103.47	110.10
1	B	63	TRP	CE2-CD2-CG	-6.61	102.01	107.30
1	A	111	TRP	CG-CD2-CE3	6.48	139.73	133.90
1	A	108	TRP	CB-CG-CD1	-6.46	118.60	127.00
1	B	112	ARG	NE-CZ-NH2	-6.40	117.10	120.30
1	B	108	TRP	CB-CG-CD1	-6.21	118.92	127.00
1	B	28	TRP	CE2-CD2-CG	-6.13	102.39	107.30
1	B	112	ARG	NE-CZ-NH1	6.11	123.35	120.30
1	A	62	TRP	CG-CD1-NE1	-6.07	104.03	110.10
1	B	45	ARG	NE-CZ-NH2	-5.88	117.36	120.30
1	A	63	TRP	CG-CD2-CE3	5.80	139.12	133.90
1	B	111	TRP	CG-CD2-CE3	5.75	139.07	133.90
1	A	111	TRP	CB-CG-CD1	-5.68	119.62	127.00
1	B	63	TRP	CG-CD1-NE1	-5.65	104.45	110.10
1	A	5	ARG	NE-CZ-NH1	5.63	123.12	120.30
1	B	73	ARG	NE-CZ-NH1	5.56	123.08	120.30
1	A	63	TRP	CG-CD1-NE1	-5.53	104.57	110.10
1	B	111	TRP	CG-CD1-NE1	-5.51	104.59	110.10
1	B	45	ARG	NE-CZ-NH1	5.50	123.05	120.30
1	A	108	TRP	CG-CD2-CE3	5.46	138.82	133.90
1	A	108	TRP	CG-CD1-NE1	-5.34	104.76	110.10
1	B	108	TRP	CG-CD2-CE3	5.32	138.69	133.90
1	B	62	TRP	CB-CG-CD1	-5.30	120.11	127.00
1	A	128	ARG	NE-CZ-NH1	5.24	122.92	120.30
1	A	21	ARG	NE-CZ-NH2	-5.22	117.69	120.30
1	A	14	ARG	NE-CZ-NH1	5.21	122.91	120.30
1	B	14	ARG	NE-CZ-NH1	5.20	122.90	120.30
1	B	14	ARG	NE-CZ-NH2	-5.17	117.71	120.30
1	B	108	TRP	CG-CD1-NE1	-5.17	104.93	110.10
1	B	111	TRP	CB-CG-CD1	-5.15	120.30	127.00
1	A	62	TRP	CB-CA-C	-5.02	100.36	110.40

There are no chirality outliers.

There are no planarity outliers.



## 5.2 Too-close contacts [i](#)

In the following table, the Non-H and H(model) columns list the number of non-hydrogen atoms and hydrogen atoms in the chain respectively. The H(added) column lists the number of hydrogen atoms added and optimized by MolProbity. The Clashes column lists the number of clashes within the asymmetric unit, whereas Symm-Clashes lists symmetry-related clashes.

Mol	Chain	Non-H	H(model)	H(added)	Clashes	Symm-Clashes
1	A	1001	0	960	3	0
1	B	1001	0	960	3	0
2	A	4	0	2	0	0
2	B	4	0	2	0	0
3	A	79	0	0	0	0
3	B	54	0	0	0	0
All	All	2143	0	1924	6	0

The all-atom clashscore is defined as the number of clashes found per 1000 atoms (including hydrogen atoms). The all-atom clashscore for this structure is 2.

All (6) close contacts within the same asymmetric unit are listed below, sorted by their clash magnitude.

Atom-1	Atom-2	Interatomic distance (Å)	Clash overlap (Å)
1:B:15:HIS:HB3	1:B:92:VAL:HG11	1.78	0.63
1:A:45:ARG:HH11	1:A:45:ARG:HG3	1.78	0.48
1:A:33:LYS:HG2	1:A:123:TRP:CH2	2.52	0.44
1:B:51:THR:HB	1:B:53:TYR:CE1	2.54	0.43
1:B:98:ILE:O	1:B:101:ASP:HB3	2.18	0.42
1:A:124:ILE:O	1:A:127:CYS:SG	2.79	0.41

There are no symmetry-related clashes.

## 5.3 Torsion angles [i](#)

### 5.3.1 Protein backbone [i](#)

In the following table, the Percentiles column shows the percent Ramachandran outliers of the chain as a percentile score with respect to all X-ray entries followed by that with respect to entries of similar resolution.

The Analysed column shows the number of residues for which the backbone conformation was analysed, and the total number of residues.

Mol	Chain	Analysed	Favoured	Allowed	Outliers	Percentiles	
1	A	127/129 (98%)	126 (99%)	1 (1%)	0	100	100
1	B	127/129 (98%)	126 (99%)	1 (1%)	0	100	100
All	All	254/258 (98%)	252 (99%)	2 (1%)	0	100	100

There are no Ramachandran outliers to report.

### 5.3.2 Protein sidechains [i](#)

In the following table, the Percentiles column shows the percent sidechain outliers of the chain as a percentile score with respect to all X-ray entries followed by that with respect to entries of similar resolution.

The Analysed column shows the number of residues for which the sidechain conformation was analysed, and the total number of residues.

Mol	Chain	Analysed	Rotameric	Outliers	Percentiles	
1	A	105/105 (100%)	101 (96%)	4 (4%)	33	24
1	B	105/105 (100%)	103 (98%)	2 (2%)	57	53
All	All	210/210 (100%)	204 (97%)	6 (3%)	42	35

All (6) residues with a non-rotameric sidechain are listed below:

Mol	Chain	Res	Type
1	A	1	LYS
1	A	19	ASN
1	A	101	ASP
1	A	129	LEU
1	B	77	ASN
1	B	101	ASP

Sometimes sidechains can be flipped to improve hydrogen bonding and reduce clashes. All (1) such sidechains are listed below:

Mol	Chain	Res	Type
1	A	77	ASN

### 5.3.3 RNA [i](#)

There are no RNA molecules in this entry.

## 5.4 Non-standard residues in protein, DNA, RNA chains [i](#)

There are no non-standard protein/DNA/RNA residues in this entry.

## 5.5 Carbohydrates [i](#)

There are no monosaccharides in this entry.

## 5.6 Ligand geometry [i](#)

2 ligands are modelled in this entry.

In the following table, the Counts columns list the number of bonds (or angles) for which Mogul statistics could be retrieved, the number of bonds (or angles) that are observed in the model and the number of bonds (or angles) that are defined in the Chemical Component Dictionary. The Link column lists molecule types, if any, to which the group is linked. The Z score for a bond length (or angle) is the number of standard deviations the observed value is removed from the expected value. A bond length (or angle) with  $|Z| > 2$  is considered an outlier worth inspection. RMSZ is the root-mean-square of all Z scores of the bond lengths (or angles).

Mol	Type	Chain	Res	Link	Bond lengths			Bond angles		
					Counts	RMSZ	$\# Z  > 2$	Counts	RMSZ	$\# Z  > 2$
2	ACY	A	130	1	3,3,3	1.02	0	3,3,3	0.94	0
2	ACY	B	130	1	3,3,3	1.16	0	3,3,3	0.93	0

There are no bond length outliers.

There are no bond angle outliers.

There are no chirality outliers.

There are no torsion outliers.

There are no ring outliers.

No monomer is involved in short contacts.

## 5.7 Other polymers [i](#)

There are no such residues in this entry.

## 5.8 Polymer linkage issues [i](#)

There are no chain breaks in this entry.

## 6 Fit of model and data [i](#)

### 6.1 Protein, DNA and RNA chains [i](#)

In the following table, the column labelled ‘#RSRZ> 2’ contains the number (and percentage) of RSRZ outliers, followed by percent RSRZ outliers for the chain as percentile scores relative to all X-ray entries and entries of similar resolution. The OWAB column contains the minimum, median, 95<sup>th</sup> percentile and maximum values of the occupancy-weighted average B-factor per residue. The column labelled ‘Q< 0.9’ lists the number of (and percentage) of residues with an average occupancy less than 0.9.

Mol	Chain	Analysed	<RSRZ>	#RSRZ>2	OWAB(Å <sup>2</sup> )	Q<0.9
1	A	129/129 (100%)	-0.48	0 <a href="#">100</a> <a href="#">100</a>	13, 21, 42, 60	0
1	B	129/129 (100%)	-0.54	2 (1%) <a href="#">72</a> <a href="#">74</a>	12, 20, 40, 62	0
All	All	258/258 (100%)	-0.51	2 (0%) <a href="#">86</a> <a href="#">87</a>	12, 21, 41, 62	0

All (2) RSRZ outliers are listed below:

Mol	Chain	Res	Type	RSRZ
1	B	129	LEU	2.5
1	B	125	ARG	2.1

### 6.2 Non-standard residues in protein, DNA, RNA chains [i](#)

There are no non-standard protein/DNA/RNA residues in this entry.

### 6.3 Carbohydrates [i](#)

There are no monosaccharides in this entry.

### 6.4 Ligands [i](#)

In the following table, the Atoms column lists the number of modelled atoms in the group and the number defined in the chemical component dictionary. The B-factors column lists the minimum, median, 95<sup>th</sup> percentile and maximum values of B factors of atoms in the group. The column labelled ‘Q< 0.9’ lists the number of atoms with occupancy less than 0.9.

Mol	Type	Chain	Res	Atoms	RSCC	RSR	B-factors(Å <sup>2</sup> )	Q<0.9
2	ACY	A	130	4/4	0.86	0.17	53,55,56,57	0
2	ACY	B	130	4/4	0.88	0.17	41,44,46,47	0

## 6.5 Other polymers [i](#)

There are no such residues in this entry.