



Full wwPDB X-ray Structure Validation Report ⓘ

Aug 7, 2023 – 07:34 PM EDT

PDB ID : 1Q84
Title : Crystal structure of the mouse acetylcholinesterase-TZ2PA6 anti complex
Authors : Bourne, Y.; Kolb, H.C.; Radic, Z.; Sharpless, K.B.; Taylor, P.; Marchot, P.
Deposited on : 2003-08-20
Resolution : 2.45 Å(reported)

This is a Full wwPDB X-ray Structure Validation Report for a publicly released PDB entry.

We welcome your comments at validation@mail.wwpdb.org

A user guide is available at

<https://www.wwpdb.org/validation/2017/XrayValidationReportHelp>

with specific help available everywhere you see the ⓘ symbol.

The types of validation reports are described at

<http://www.wwpdb.org/validation/2017/FAQs#types>.

The following versions of software and data (see [references ⓘ](#)) were used in the production of this report:

MolProbity : 4.02b-467
Mogul : 1.8.5 (274361), CSD as541be (2020)
Xtriage (Phenix) : 1.13
EDS : 2.35
buster-report : 1.1.7 (2018)
Percentile statistics : 20191225.v01 (using entries in the PDB archive December 25th 2019)
Refmac : 5.8.0158
CCP4 : 7.0.044 (Gargrove)
Ideal geometry (proteins) : Engh & Huber (2001)
Ideal geometry (DNA, RNA) : Parkinson et al. (1996)
Validation Pipeline (wwPDB-VP) : 2.35

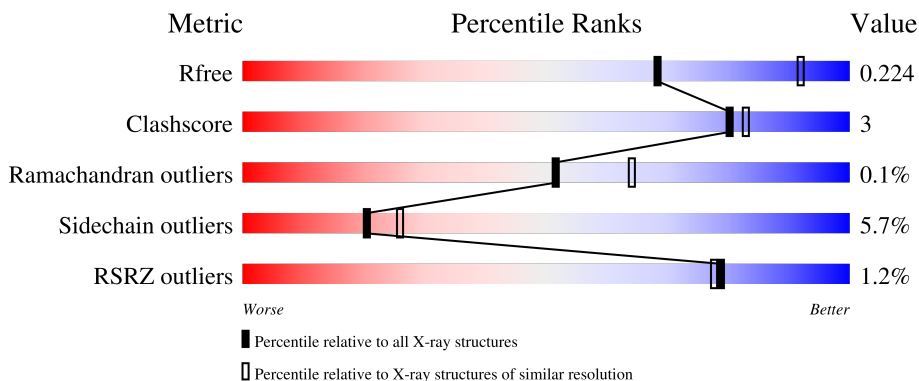
1 Overall quality at a glance

The following experimental techniques were used to determine the structure:

X-RAY DIFFRACTION

The reported resolution of this entry is 2.45 Å.

Percentile scores (ranging between 0-100) for global validation metrics of the entry are shown in the following graphic. The table shows the number of entries on which the scores are based.



Metric	Whole archive (#Entries)	Similar resolution (#Entries, resolution range(Å))
R_{free}	130704	1544 (2.48-2.44)
Clashscore	141614	1613 (2.48-2.44)
Ramachandran outliers	138981	1598 (2.48-2.44)
Sidechain outliers	138945	1598 (2.48-2.44)
RSRZ outliers	127900	1523 (2.48-2.44)

The table below summarises the geometric issues observed across the polymeric chains and their fit to the electron density. The red, orange, yellow and green segments of the lower bar indicate the fraction of residues that contain outliers for ≥ 3 , 2, 1 and 0 types of geometric quality criteria respectively. A grey segment represents the fraction of residues that are not modelled. The numeric value for each fraction is indicated below the corresponding segment, with a dot representing fractions $\leq 5\%$. The upper red bar (where present) indicates the fraction of residues that have poor fit to the electron density. The numeric value is given above the bar.

Mol	Chain	Length	Quality of chain
1	A	580	 2% 81% 10% • 8%
1	B	580	 % 81% 9% • 8%

2 Entry composition [i](#)

There are 5 unique types of molecules in this entry. The entry contains 8799 atoms, of which 0 are hydrogens and 0 are deuteriums.

In the tables below, the ZeroOcc column contains the number of atoms modelled with zero occupancy, the AltConf column contains the number of residues with at least one atom in alternate conformation and the Trace column contains the number of residues modelled with at most 2 atoms.

- Molecule 1 is a protein called Acetylcholinesterase.

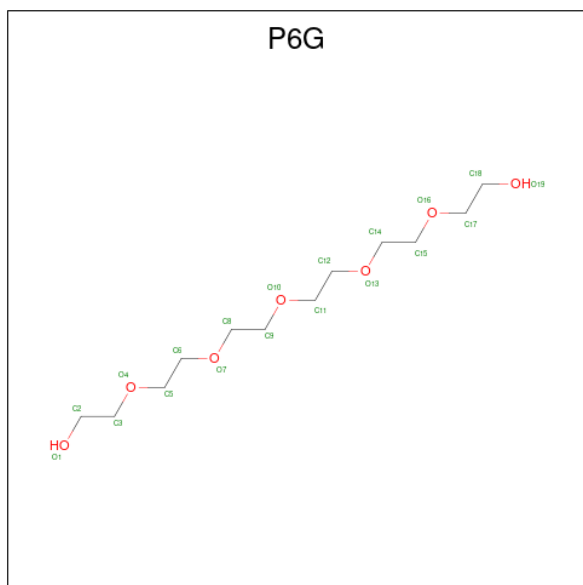
Mol	Chain	Residues	Atoms					ZeroOcc	AltConf	Trace
			Total	C	N	O	S			
1	A	536	Total 4172	C 2678	N 723	O 757	S 14	0	0	0
1	B	531	Total 4142	C 2662	N 715	O 751	S 14	0	0	0

- Molecule 2 is 2-acetamido-2-deoxy-beta-D-glucopyranose (three-letter code: NAG) (formula: $C_8H_{15}NO_6$).



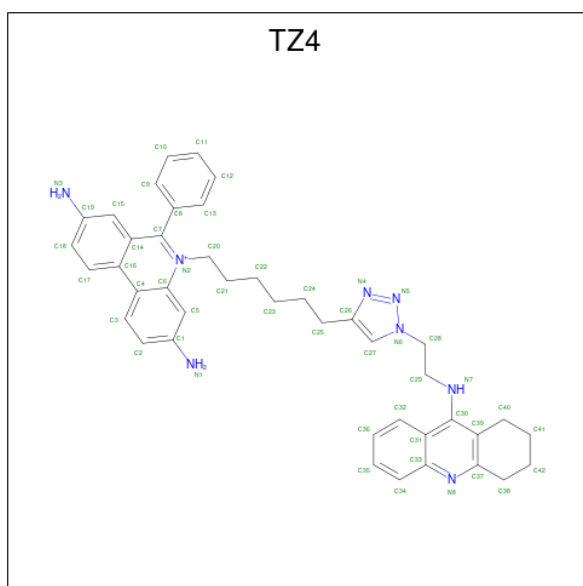
Mol	Chain	Residues	Atoms				ZeroOcc	AltConf
			Total	C	N	O		
2	A	1	Total 14	C 8	N 1	O 5	0	0
2	A	1	Total 14	C 8	N 1	O 5	0	0

- Molecule 3 is HEXAETHYLENE GLYCOL (three-letter code: P6G) (formula: $C_{12}H_{26}O_7$).



Mol	Chain	Residues	Atoms		ZeroOcc	AltConf
3	A	1	Total	C O	0	0
			19	12 7		

- Molecule 4 is 3,8-DIAMINO-6-PHENYL-5-[6-[1-[2-[(1,2,3,4-TETRAHYDRO-9-ACRIDINYL)AMINO]ETHYL]-1H-1,2,3-TRIAZOL-4-YL]HEXYL]-PHENANTHRIDINIUM (three-letter code: TZ4) (formula: C₄₂H₄₅N₈).



Mol	Chain	Residues	Atoms		ZeroOcc	AltConf
4	A	1	Total	C N	0	0
			50	42 8		
4	B	1	Total	C N	0	0
			50	42 8		

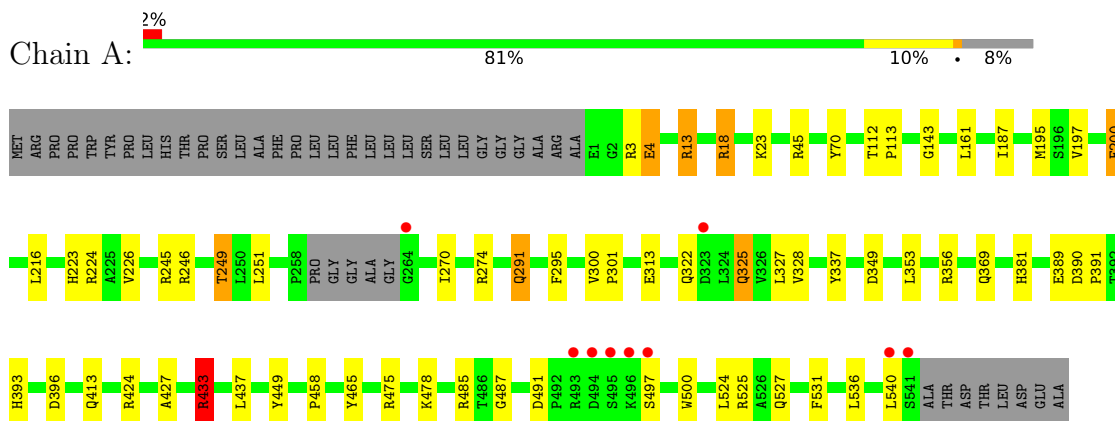
- Molecule 5 is water.

Mol	Chain	Residues	Atoms		ZeroOcc	AltConf
5	A	214	Total 214	O 214	0	0
5	B	124	Total 124	O 124	0	0

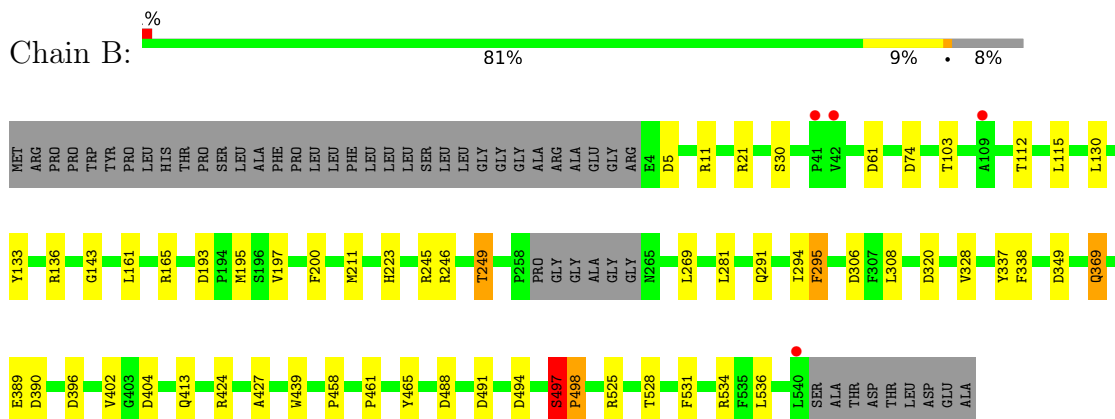
3 Residue-property plots [i](#)

These plots are drawn for all protein, RNA, DNA and oligosaccharide chains in the entry. The first graphic for a chain summarises the proportions of the various outlier classes displayed in the second graphic. The second graphic shows the sequence view annotated by issues in geometry and electron density. Residues are color-coded according to the number of geometric quality criteria for which they contain at least one outlier: green = 0, yellow = 1, orange = 2 and red = 3 or more. A red dot above a residue indicates a poor fit to the electron density ($RSRZ > 2$). Stretches of 2 or more consecutive residues without any outlier are shown as a green connector. Residues present in the sample, but not in the model, are shown in grey.

- Molecule 1: Acetylcholinesterase



- Molecule 1: Acetylcholinesterase



4 Data and refinement statistics

Property	Value	Source
Space group	P 21 21 21	Depositor
Cell constants a, b, c, α , β , γ	79.27Å 111.77Å 227.17Å 90.00° 90.00° 90.00°	Depositor
Resolution (Å)	20.00 – 2.45 28.86 – 2.45	Depositor EDS
% Data completeness (in resolution range)	99.7 (20.00-2.45) 99.7 (28.86-2.45)	Depositor EDS
R_{merge}	(Not available)	Depositor
R_{sym}	0.06	Depositor
$\langle I/\sigma(I) \rangle$ ¹	4.17 (at 2.45Å)	Xtrriage
Refinement program	REFMAC 5.1.24	Depositor
R, R_{free}	0.184 , 0.214 0.199 , 0.224	Depositor DCC
R_{free} test set	1508 reflections (2.02%)	wwPDB-VP
Wilson B-factor (Å ²)	47.0	Xtrriage
Anisotropy	0.695	Xtrriage
Bulk solvent k_{sol} (e/Å ³), B_{sol} (Å ²)	0.30 , 36.8	EDS
L-test for twinning ²	$\langle L \rangle = 0.51$, $\langle L^2 \rangle = 0.35$	Xtrriage
Estimated twinning fraction	No twinning to report.	Xtrriage
F_o, F_c correlation	0.96	EDS
Total number of atoms	8799	wwPDB-VP
Average B, all atoms (Å ²)	54.0	wwPDB-VP

Xtrriage's analysis on translational NCS is as follows: *The largest off-origin peak in the Patterson function is 2.72% of the height of the origin peak. No significant pseudotranslation is detected.*

¹Intensities estimated from amplitudes.

²Theoretical values of $\langle |L| \rangle$, $\langle L^2 \rangle$ for acentric reflections are 0.5, 0.333 respectively for untwinned datasets, and 0.375, 0.2 for perfectly twinned datasets.

5 Model quality i

5.1 Standard geometry i

Bond lengths and bond angles in the following residue types are not validated in this section: NAG, TZ4, P6G

The Z score for a bond length (or angle) is the number of standard deviations the observed value is removed from the expected value. A bond length (or angle) with $|Z| > 5$ is considered an outlier worth inspection. RMSZ is the root-mean-square of all Z scores of the bond lengths (or angles).

Mol	Chain	Bond lengths		Bond angles	
		RMSZ	# Z >5	RMSZ	# Z >5
1	A	0.72	0/4296	0.88	8/5872 (0.1%)
1	B	0.67	0/4266	0.83	13/5833 (0.2%)
All	All	0.70	0/8562	0.86	21/11705 (0.2%)

Chiral center outliers are detected by calculating the chiral volume of a chiral center and verifying if the center is modelled as a planar moiety or with the opposite hand. A planarity outlier is detected by checking planarity of atoms in a peptide group, atoms in a mainchain group or atoms of a sidechain that are expected to be planar.

Mol	Chain	#Chirality outliers	#Planarity outliers
1	B	0	1

There are no bond length outliers.

All (21) bond angle outliers are listed below:

Mol	Chain	Res	Type	Atoms	Z	Observed($^{\circ}$)	Ideal($^{\circ}$)
1	B	404	ASP	CB-CG-OD2	6.96	124.56	118.30
1	A	396	ASP	CB-CG-OD2	6.89	124.50	118.30
1	B	74	ASP	CB-CG-OD2	6.87	124.48	118.30
1	A	491	ASP	CB-CG-OD2	6.61	124.25	118.30
1	A	390	ASP	CB-CG-OD2	6.49	124.14	118.30
1	B	5	ASP	CB-CG-OD2	6.13	123.82	118.30
1	B	349	ASP	CB-CG-OD2	6.05	123.75	118.30
1	B	396	ASP	CB-CG-OD2	6.04	123.73	118.30
1	B	320	ASP	CB-CG-OD2	5.97	123.68	118.30
1	A	433	ARG	NE-CZ-NH2	-5.90	117.35	120.30
1	B	498	PRO	N-CA-C	-5.74	97.17	112.10
1	A	433	ARG	NE-CZ-NH1	5.55	123.07	120.30
1	B	488	ASP	CB-CG-OD2	5.51	123.26	118.30
1	A	349	ASP	CB-CG-OD2	5.41	123.17	118.30

Continued on next page...

Continued from previous page...

Mol	Chain	Res	Type	Atoms	Z	Observed(°)	Ideal(°)
1	B	193	ASP	CB-CG-OD2	5.39	123.15	118.30
1	B	491	ASP	CB-CG-OD2	5.39	123.15	118.30
1	B	390	ASP	CB-CG-OD2	5.37	123.13	118.30
1	A	18	ARG	NE-CZ-NH2	-5.31	117.64	120.30
1	A	475	ARG	NE-CZ-NH2	-5.25	117.67	120.30
1	B	306	ASP	CB-CG-OD2	5.17	122.95	118.30
1	B	494	ASP	CB-CG-OD2	5.10	122.89	118.30

There are no chirality outliers.

All (1) planarity outliers are listed below:

Mol	Chain	Res	Type	Group
1	B	497	SER	Peptide

5.2 Too-close contacts [i](#)

In the following table, the Non-H and H(model) columns list the number of non-hydrogen atoms and hydrogen atoms in the chain respectively. The H(added) column lists the number of hydrogen atoms added and optimized by MolProbity. The Clashes column lists the number of clashes within the asymmetric unit, whereas Symm-Clashes lists symmetry-related clashes.

Mol	Chain	Non-H	H(model)	H(added)	Clashes	Symm-Clashes
1	A	4172	0	4050	27	0
1	B	4142	0	4023	17	0
2	A	28	0	26	0	0
3	A	19	0	26	3	0
4	A	50	0	45	1	0
4	B	50	0	45	1	0
5	A	214	0	0	6	0
5	B	124	0	0	2	0
All	All	8799	0	8215	45	0

The all-atom clashscore is defined as the number of clashes found per 1000 atoms (including hydrogen atoms). The all-atom clashscore for this structure is 3.

All (45) close contacts within the same asymmetric unit are listed below, sorted by their clash magnitude.

Atom-1	Atom-2	Interatomic distance (Å)	Clash overlap (Å)
1:B:197:VAL:H	1:B:223:HIS:HD2	1.36	0.72

Continued on next page...

Continued from previous page...

Atom-1	Atom-2	Interatomic distance (Å)	Clash overlap (Å)
1:B:30:SER:HB2	1:B:103:THR:HG22	1.71	0.71
1:B:245:ARG:O	1:B:249:THR:HG23	1.94	0.67
1:B:112:THR:HG21	1:B:143:GLY:O	1.96	0.65
4:A:951:TZ4:H291	5:A:1755:HOH:O	1.96	0.65
1:A:4:GLU:OE2	1:A:18:ARG:HD3	1.99	0.61
1:A:197:VAL:H	1:A:223:HIS:HD2	1.48	0.61
1:A:527:GLN:HG3	3:A:901:P6G:H22	1.83	0.59
1:B:534:ARG:HD3	5:B:1075:HOH:O	2.02	0.58
1:A:325:GLN:HE21	1:A:487:GLY:HA3	1.68	0.58
1:A:113:PRO:HG2	1:A:485:ARG:HG2	1.86	0.57
1:A:112:THR:HG21	1:A:143:GLY:O	2.05	0.56
1:B:211:MET:HG2	1:B:308:LEU:HD21	1.90	0.54
1:A:369:GLN:HB2	5:A:1726:HOH:O	2.09	0.52
1:A:13:ARG:NH2	5:A:1722:HOH:O	2.43	0.51
1:A:245:ARG:O	1:A:249:THR:HG23	2.11	0.50
1:A:328:VAL:O	1:A:427:ALA:HA	2.12	0.49
1:A:274:ARG:HD3	5:A:1794:HOH:O	2.12	0.48
1:A:433:ARG:HD3	5:A:1810:HOH:O	2.13	0.48
1:A:300:VAL:HB	1:A:301:PRO:HD2	1.95	0.48
1:A:161:LEU:HD12	1:A:270:ILE:HD11	1.96	0.48
1:A:458:PRO:HA	1:A:465:TYR:CD2	2.50	0.47
1:A:381:HIS:HA	3:A:901:P6G:H172	1.96	0.46
1:B:328:VAL:O	1:B:427:ALA:HA	2.15	0.46
1:A:393:HIS:HB2	5:A:1780:HOH:O	2.14	0.46
1:A:437:LEU:HD11	1:A:449:TYR:CD2	2.50	0.46
1:B:458:PRO:HA	1:B:465:TYR:CD2	2.51	0.46
1:B:369:GLN:HB3	5:B:1024:HOH:O	2.16	0.46
1:A:224:ARG:HD3	1:A:325:GLN:NE2	2.31	0.45
1:A:353:LEU:HB3	1:A:391:PRO:HB2	1.98	0.44
1:B:497:SER:HB2	1:B:498:PRO:HA	2.00	0.43
1:B:528:THR:O	1:B:531:PHE:HB3	2.18	0.43
1:B:497:SER:CB	1:B:498:PRO:HA	2.49	0.43
1:A:200:PHE:CB	1:A:226:VAL:HB	2.48	0.43
1:A:245:ARG:O	1:A:249:THR:CG2	2.67	0.42
1:A:224:ARG:HG2	1:A:325:GLN:HB2	2.01	0.42
1:B:294:ILE:HD11	1:B:402:VAL:HG21	2.02	0.42
1:B:130:LEU:HD12	1:B:133:TYR:CE2	2.55	0.42
1:B:439:TRP:CZ2	4:B:952:TZ4:H36	2.55	0.41
1:B:161:LEU:HD11	1:B:269:LEU:HD22	2.03	0.41
1:A:531:PHE:HB2	3:A:901:P6G:H62	2.02	0.41
1:A:327:LEU:HD11	1:A:500:TRP:CH2	2.56	0.41

Continued on next page...

Continued from previous page...

Atom-1	Atom-2	Interatomic distance (Å)	Clash overlap (Å)
1:A:187:ILE:HD12	1:A:187:ILE:HA	1.94	0.41
1:A:291:GLN:HE22	1:A:369:GLN:NE2	2.19	0.40
1:B:295:PHE:CE2	1:B:338:PHE:CE1	3.09	0.40

There are no symmetry-related clashes.

5.3 Torsion angles [i](#)

5.3.1 Protein backbone [i](#)

In the following table, the Percentiles column shows the percent Ramachandran outliers of the chain as a percentile score with respect to all X-ray entries followed by that with respect to entries of similar resolution.

The Analysed column shows the number of residues for which the backbone conformation was analysed, and the total number of residues.

Mol	Chain	Analysed	Favoured	Allowed	Outliers	Percentiles
1	A	532/580 (92%)	517 (97%)	15 (3%)	0	100 100
1	B	527/580 (91%)	511 (97%)	15 (3%)	1 (0%)	47 57
All	All	1059/1160 (91%)	1028 (97%)	30 (3%)	1 (0%)	51 64

All (1) Ramachandran outliers are listed below:

Mol	Chain	Res	Type
1	B	497	SER

5.3.2 Protein sidechains [i](#)

In the following table, the Percentiles column shows the percent sidechain outliers of the chain as a percentile score with respect to all X-ray entries followed by that with respect to entries of similar resolution.

The Analysed column shows the number of residues for which the sidechain conformation was analysed, and the total number of residues.

Mol	Chain	Analysed	Rotameric	Outliers	Percentiles
1	A	437/473 (92%)	408 (93%)	29 (7%)	16 20
1	B	435/473 (92%)	414 (95%)	21 (5%)	25 33

Continued on next page...

Continued from previous page...

Mol	Chain	Analysed	Rotameric	Outliers	Percentiles	
All	All	872/946 (92%)	822 (94%)	50 (6%)	20	26

All (50) residues with a non-rotameric sidechain are listed below:

Mol	Chain	Res	Type
1	A	3	ARG
1	A	4	GLU
1	A	13	ARG
1	A	23	LYS
1	A	45	ARG
1	A	70	TYR
1	A	195	MET
1	A	200	PHE
1	A	216	LEU
1	A	246	ARG
1	A	249	THR
1	A	251	LEU
1	A	291	GLN
1	A	295	PHE
1	A	313	GLU
1	A	322	GLN
1	A	325	GLN
1	A	337	TYR
1	A	356	ARG
1	A	389	GLU
1	A	413	GLN
1	A	424	ARG
1	A	433	ARG
1	A	478	LYS
1	A	497	SER
1	A	524	LEU
1	A	525	ARG
1	A	536	LEU
1	A	540	LEU
1	B	11	ARG
1	B	21	ARG
1	B	61	ASP
1	B	115	LEU
1	B	136	ARG
1	B	165	ARG
1	B	195	MET
1	B	200	PHE

Continued on next page...

Continued from previous page...

Mol	Chain	Res	Type
1	B	246	ARG
1	B	249	THR
1	B	281	LEU
1	B	291	GLN
1	B	295	PHE
1	B	337	TYR
1	B	369	GLN
1	B	389	GLU
1	B	413	GLN
1	B	424	ARG
1	B	461	PRO
1	B	525	ARG
1	B	536	LEU

Sometimes sidechains can be flipped to improve hydrogen bonding and reduce clashes. All (6) such sidechains are listed below:

Mol	Chain	Res	Type
1	A	223	HIS
1	A	291	GLN
1	A	325	GLN
1	B	223	HIS
1	B	291	GLN
1	B	369	GLN

5.3.3 RNA [i](#)

There are no RNA molecules in this entry.

5.4 Non-standard residues in protein, DNA, RNA chains [i](#)

There are no non-standard protein/DNA/RNA residues in this entry.

5.5 Carbohydrates [i](#)

There are no monosaccharides in this entry.

5.6 Ligand geometry [i](#)

5 ligands are modelled in this entry.

In the following table, the Counts columns list the number of bonds (or angles) for which Mogul statistics could be retrieved, the number of bonds (or angles) that are observed in the model and the number of bonds (or angles) that are defined in the Chemical Component Dictionary. The Link column lists molecule types, if any, to which the group is linked. The Z score for a bond length (or angle) is the number of standard deviations the observed value is removed from the expected value. A bond length (or angle) with $|Z| > 2$ is considered an outlier worth inspection. RMSZ is the root-mean-square of all Z scores of the bond lengths (or angles).

Mol	Type	Chain	Res	Link	Bond lengths			Bond angles		
					Counts	RMSZ	# $ Z > 2$	Counts	RMSZ	# $ Z > 2$
2	NAG	A	1501	1	14,14,15	1.15	1 (7%)	17,19,21	1.95	4 (23%)
2	NAG	A	1701	1	14,14,15	0.75	0	17,19,21	1.73	5 (29%)
3	P6G	A	901	-	18,18,18	2.11	6 (33%)	17,17,17	1.30	1 (5%)
4	TZ4	A	951	-	56,57,57	1.58	10 (17%)	65,80,80	2.16	20 (30%)
4	TZ4	B	952	-	56,57,57	1.72	10 (17%)	65,80,80	2.33	21 (32%)

In the following table, the Chirals column lists the number of chiral outliers, the number of chiral centers analysed, the number of these observed in the model and the number defined in the Chemical Component Dictionary. Similar counts are reported in the Torsion and Rings columns. '-' means no outliers of that kind were identified.

Mol	Type	Chain	Res	Link	Chirals	Torsions	Rings
2	NAG	A	1501	1	-	4/6/23/26	0/1/1/1
2	NAG	A	1701	1	-	2/6/23/26	0/1/1/1
3	P6G	A	901	-	-	7/16/16/16	-
4	TZ4	A	951	-	-	7/15/26/26	0/8/8/8
4	TZ4	B	952	-	-	10/15/26/26	0/8/8/8

All (27) bond length outliers are listed below:

Mol	Chain	Res	Type	Atoms	Z	Observed(Å)	Ideal(Å)
4	B	952	TZ4	C40-C39	-5.31	1.43	1.51
4	A	951	TZ4	C40-C39	-4.54	1.44	1.51
3	A	901	P6G	O10-C9	4.02	1.59	1.42
4	B	952	TZ4	C41-C40	-3.91	1.37	1.51
4	B	952	TZ4	C42-C38	-3.87	1.37	1.51
4	A	951	TZ4	C41-C40	-3.84	1.37	1.51
3	A	901	P6G	O13-C12	3.77	1.58	1.42
4	A	951	TZ4	C42-C38	-3.66	1.38	1.51
4	B	952	TZ4	C38-C37	-3.55	1.45	1.50
4	B	952	TZ4	C6-N2	3.51	1.43	1.38
3	A	901	P6G	O16-C15	3.50	1.57	1.42

Continued on next page...

Continued from previous page...

Mol	Chain	Res	Type	Atoms	Z	Observed(Å)	Ideal(Å)
3	A	901	P6G	O4-C3	3.33	1.56	1.42
2	A	1501	NAG	C1-C2	3.31	1.57	1.52
3	A	901	P6G	O19-C18	3.27	1.59	1.42
4	A	951	TZ4	C38-C37	-3.24	1.45	1.50
4	B	952	TZ4	C15-C14	3.10	1.46	1.41
4	A	951	TZ4	C39-C37	2.85	1.44	1.40
3	A	901	P6G	O7-C6	2.82	1.54	1.42
4	B	952	TZ4	C39-C37	2.79	1.44	1.40
4	B	952	TZ4	C30-C39	2.68	1.43	1.38
4	A	951	TZ4	C15-C14	2.45	1.45	1.41
4	B	952	TZ4	C42-C41	-2.29	1.42	1.51
4	A	951	TZ4	C42-C41	-2.22	1.42	1.51
4	A	951	TZ4	C27-N6	-2.19	1.33	1.35
4	B	952	TZ4	C37-N8	2.19	1.35	1.32
4	A	951	TZ4	C3-C4	2.19	1.45	1.41
4	A	951	TZ4	C6-N2	2.10	1.41	1.38

All (51) bond angle outliers are listed below:

Mol	Chain	Res	Type	Atoms	Z	Observed(°)	Ideal(°)
4	B	952	TZ4	C40-C39-C37	-9.33	112.36	121.08
4	A	951	TZ4	C40-C39-C37	-7.21	114.34	121.08
4	B	952	TZ4	C39-C30-N7	5.93	130.41	119.54
4	B	952	TZ4	C42-C38-C37	5.44	122.47	113.53
4	B	952	TZ4	C41-C40-C39	5.35	123.82	112.84
4	A	951	TZ4	C39-C30-N7	4.96	128.62	119.54
2	A	1501	NAG	C1-O5-C5	4.91	118.84	112.19
4	B	952	TZ4	N4-N5-N6	4.87	110.99	107.31
4	A	951	TZ4	C19-C15-C14	4.62	124.91	120.90
4	A	951	TZ4	C41-C40-C39	4.41	121.90	112.84
2	A	1501	NAG	O5-C5-C6	4.13	113.69	107.20
4	A	951	TZ4	N4-N5-N6	3.95	110.29	107.31
4	A	951	TZ4	C28-N6-C27	-3.92	120.61	129.82
4	A	951	TZ4	C42-C38-C37	3.84	119.84	113.53
4	B	952	TZ4	C19-C15-C14	3.78	124.18	120.90
2	A	1701	NAG	O5-C5-C6	3.72	113.03	107.20
4	A	951	TZ4	C24-C25-C26	-3.32	102.67	113.11
4	B	952	TZ4	C31-C30-N7	-3.22	111.51	122.06
4	B	952	TZ4	C17-C16-C14	-3.20	114.10	118.54
4	A	951	TZ4	C17-C16-C14	-3.19	114.12	118.54
3	A	901	P6G	O1-C2-C3	3.18	130.28	111.81
4	A	951	TZ4	C31-C30-N7	-3.15	111.73	122.06

Continued on next page...

Continued from previous page...

Mol	Chain	Res	Type	Atoms	Z	Observed(°)	Ideal(°)
4	B	952	TZ4	C28-N6-C27	-3.06	122.62	129.82
4	A	951	TZ4	C7-N2-C6	2.98	125.88	121.90
2	A	1701	NAG	C3-C4-C5	-2.93	105.01	110.24
4	B	952	TZ4	C28-C29-N7	-2.87	103.97	112.44
4	B	952	TZ4	C24-C25-C26	-2.61	104.92	113.11
2	A	1701	NAG	O4-C4-C5	2.58	115.70	109.30
4	A	951	TZ4	C29-C28-N6	-2.43	106.95	110.90
4	A	951	TZ4	C20-N2-C7	-2.40	116.76	118.90
4	A	951	TZ4	C18-C19-C15	-2.38	114.66	119.65
4	B	952	TZ4	C39-C37-N8	-2.37	121.66	123.68
4	B	952	TZ4	C2-C3-C4	2.33	124.99	121.63
4	A	951	TZ4	C37-N8-C33	2.29	120.50	117.67
4	B	952	TZ4	C7-N2-C6	2.27	124.93	121.90
4	B	952	TZ4	C4-C6-N2	-2.22	116.52	118.53
4	B	952	TZ4	C18-C19-C15	-2.19	115.06	119.65
4	A	951	TZ4	C35-C34-C33	2.18	123.21	120.08
4	B	952	TZ4	C2-C1-C5	-2.17	115.11	119.65
4	A	951	TZ4	C4-C6-N2	-2.14	116.59	118.53
4	B	952	TZ4	C3-C4-C6	-2.13	114.87	117.80
4	B	952	TZ4	C20-N2-C7	-2.11	117.02	118.90
4	A	951	TZ4	C2-C1-C5	-2.11	115.23	119.65
4	A	951	TZ4	C38-C37-C39	-2.10	119.32	121.49
4	B	952	TZ4	C42-C41-C40	2.10	121.87	112.55
4	A	951	TZ4	C3-C4-C6	-2.10	114.91	117.80
2	A	1701	NAG	C6-C5-C4	2.05	117.80	113.00
2	A	1501	NAG	C2-N2-C7	2.05	125.82	122.90
2	A	1501	NAG	O7-C7-C8	-2.03	118.29	122.06
4	B	952	TZ4	C35-C34-C33	2.02	122.99	120.08
2	A	1701	NAG	O5-C5-C4	-2.02	105.92	110.83

There are no chirality outliers.

All (30) torsion outliers are listed below:

Mol	Chain	Res	Type	Atoms
4	A	951	TZ4	C29-C28-N6-N5
4	A	951	TZ4	C29-C28-N6-C27
4	A	951	TZ4	N6-C28-C29-N7
4	B	952	TZ4	C29-C28-N6-N5
4	B	952	TZ4	C29-C28-N6-C27
4	B	952	TZ4	N6-C28-C29-N7
3	A	901	P6G	O1-C2-C3-O4
2	A	1501	NAG	C4-C5-C6-O6

Continued on next page...

Continued from previous page...

Mol	Chain	Res	Type	Atoms
4	B	952	TZ4	C23-C24-C25-C26
2	A	1501	NAG	O5-C5-C6-O6
4	B	952	TZ4	C22-C23-C24-C25
4	A	951	TZ4	C31-C30-N7-C29
2	A	1501	NAG	C8-C7-N2-C2
3	A	901	P6G	C11-C12-O13-C14
3	A	901	P6G	C18-C17-O16-C15
2	A	1501	NAG	O7-C7-N2-C2
4	A	951	TZ4	C39-C30-N7-C29
4	B	952	TZ4	C39-C30-N7-C29
4	A	951	TZ4	C22-C23-C24-C25
4	B	952	TZ4	C20-C21-C22-C23
2	A	1701	NAG	C8-C7-N2-C2
3	A	901	P6G	C2-C3-O4-C5
4	B	952	TZ4	C21-C22-C23-C24
3	A	901	P6G	C6-C5-O4-C3
2	A	1701	NAG	O7-C7-N2-C2
4	A	951	TZ4	C24-C25-C26-N4
4	B	952	TZ4	C24-C25-C26-N4
4	B	952	TZ4	C28-C29-N7-C30
3	A	901	P6G	C14-C15-O16-C17
3	A	901	P6G	C5-C6-O7-C8

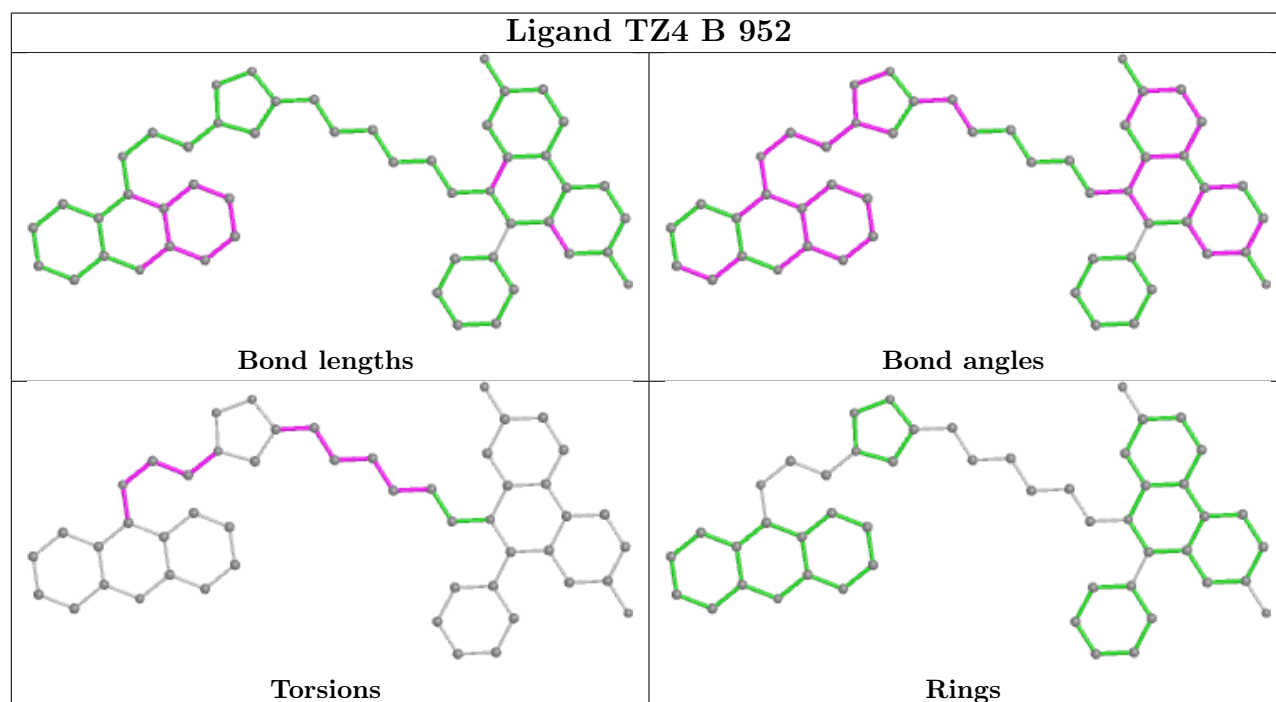
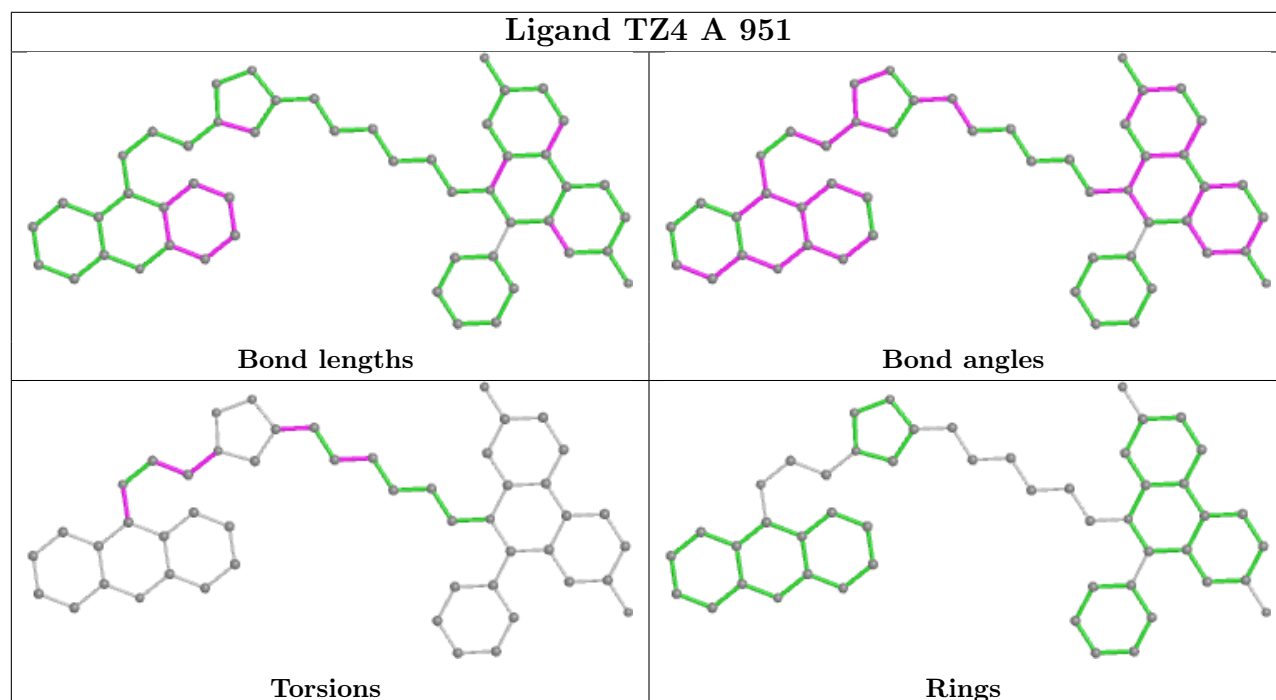
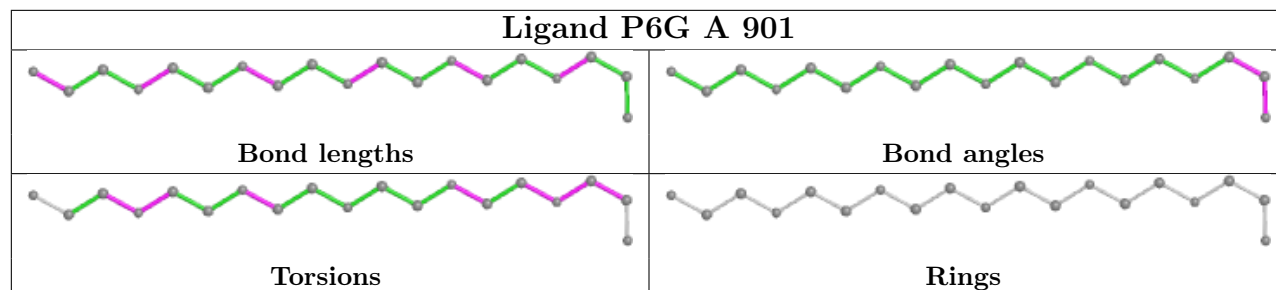
There are no ring outliers.

3 monomers are involved in 5 short contacts:

Mol	Chain	Res	Type	Clashes	Symm-Clashes
3	A	901	P6G	3	0
4	A	951	TZ4	1	0
4	B	952	TZ4	1	0

The following is a two-dimensional graphical depiction of Mogul quality analysis of bond lengths, bond angles, torsion angles, and ring geometry for all instances of the Ligand of Interest. In addition, ligands with molecular weight > 250 and outliers as shown on the validation Tables will also be included. For torsion angles, if less than 5% of the Mogul distribution of torsion angles is within 10 degrees of the torsion angle in question, then that torsion angle is considered an outlier. Any bond that is central to one or more torsion angles identified as an outlier by Mogul will be highlighted in the graph. For rings, the root-mean-square deviation (RMSD) between the ring in question and similar rings identified by Mogul is calculated over all ring torsion angles. If the average RMSD is greater than 60 degrees and the minimal RMSD between the ring in question and any Mogul-identified rings is also greater than 60 degrees, then that ring is considered an outlier. The outliers are highlighted in purple. The color gray indicates Mogul did not find sufficient

equivalents in the CSD to analyse the geometry.



5.7 Other polymers [i](#)

There are no such residues in this entry.

5.8 Polymer linkage issues [i](#)

There are no chain breaks in this entry.

6 Fit of model and data [i](#)

6.1 Protein, DNA and RNA chains [i](#)

In the following table, the column labelled ‘#RSRZ > 2’ contains the number (and percentage) of RSRZ outliers, followed by percent RSRZ outliers for the chain as percentile scores relative to all X-ray entries and entries of similar resolution. The OWAB column contains the minimum, median, 95th percentile and maximum values of the occupancy-weighted average B-factor per residue. The column labelled ‘Q < 0.9’ lists the number of (and percentage) of residues with an average occupancy less than 0.9.

Mol	Chain	Analysed	<RSRZ>	#RSRZ>2	OWAB(Å ²)	Q<0.9
1	A	536/580 (92%)	-0.34	9 (1%) 70 67	36, 50, 72, 99	0
1	B	531/580 (91%)	-0.16	4 (0%) 86 86	39, 55, 77, 97	0
All	All	1067/1160 (91%)	-0.25	13 (1%) 79 77	36, 52, 75, 99	0

All (13) RSRZ outliers are listed below:

Mol	Chain	Res	Type	RSRZ
1	A	540	LEU	6.9
1	A	495	SER	3.7
1	A	497	SER	3.6
1	A	264	GLY	3.4
1	A	541	SER	3.1
1	B	41	PRO	3.0
1	A	494	ASP	3.0
1	B	42	VAL	2.6
1	A	493	ARG	2.6
1	B	109	ALA	2.5
1	A	496	LYS	2.3
1	A	323	ASP	2.2
1	B	540	LEU	2.1

6.2 Non-standard residues in protein, DNA, RNA chains [i](#)

There are no non-standard protein/DNA/RNA residues in this entry.

6.3 Carbohydrates [i](#)

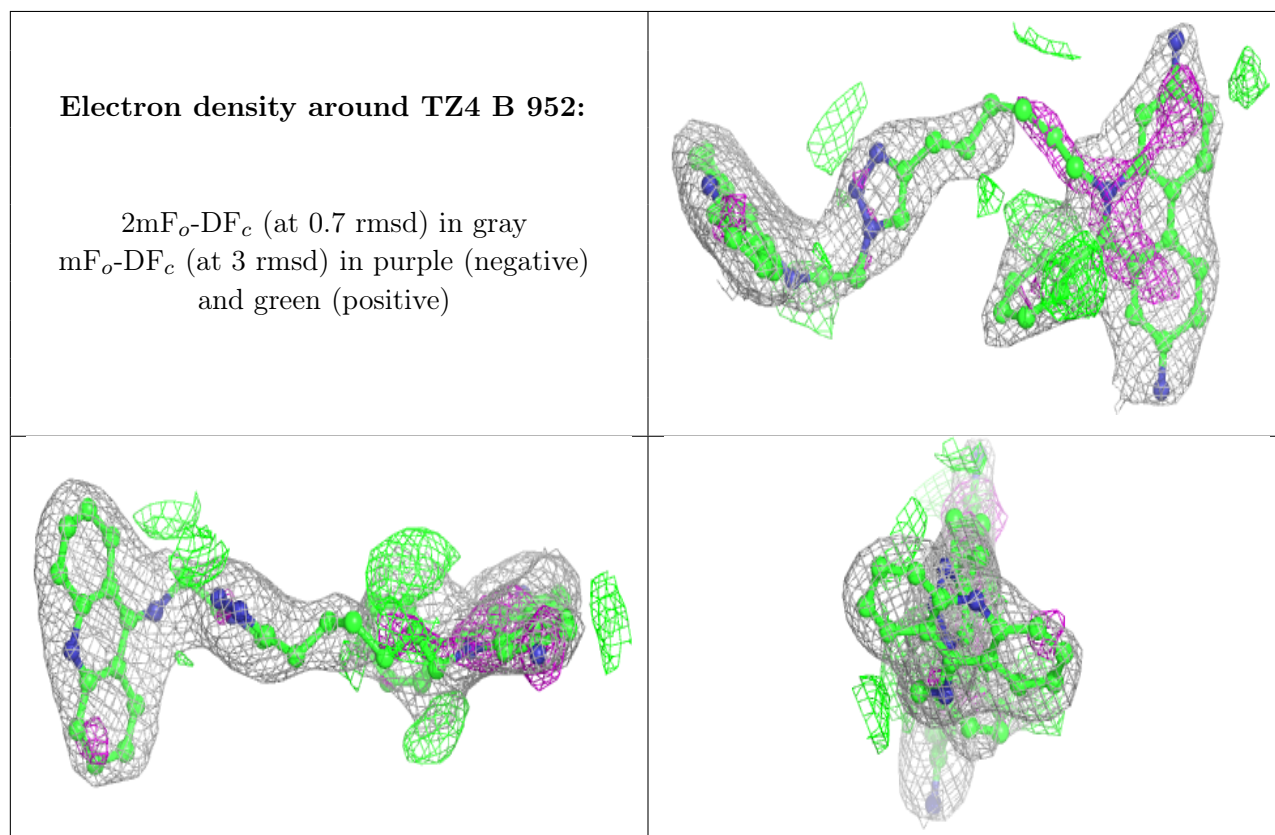
There are no monosaccharides in this entry.

6.4 Ligands [i](#)

In the following table, the Atoms column lists the number of modelled atoms in the group and the number defined in the chemical component dictionary. The B-factors column lists the minimum, median, 95th percentile and maximum values of B factors of atoms in the group. The column labelled 'Q < 0.9' lists the number of atoms with occupancy less than 0.9.

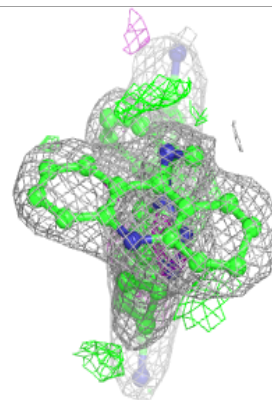
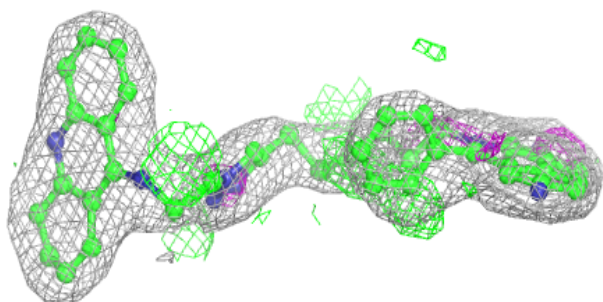
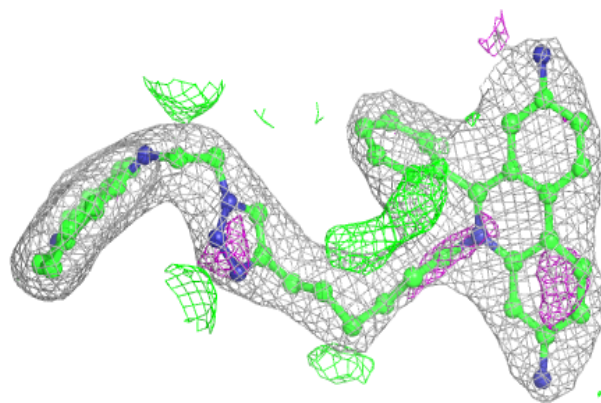
Mol	Type	Chain	Res	Atoms	RSCC	RSR	B-factors(Å ²)	Q<0.9
2	NAG	A	1701	14/15	0.81	0.42	86,95,98,99	0
2	NAG	A	1501	14/15	0.86	0.39	79,87,94,94	0
4	TZ4	B	952	50/50	0.86	0.19	53,71,77,78	0
4	TZ4	A	951	50/50	0.90	0.16	44,62,66,67	0
3	P6G	A	901	19/19	0.90	0.19	61,72,83,86	0

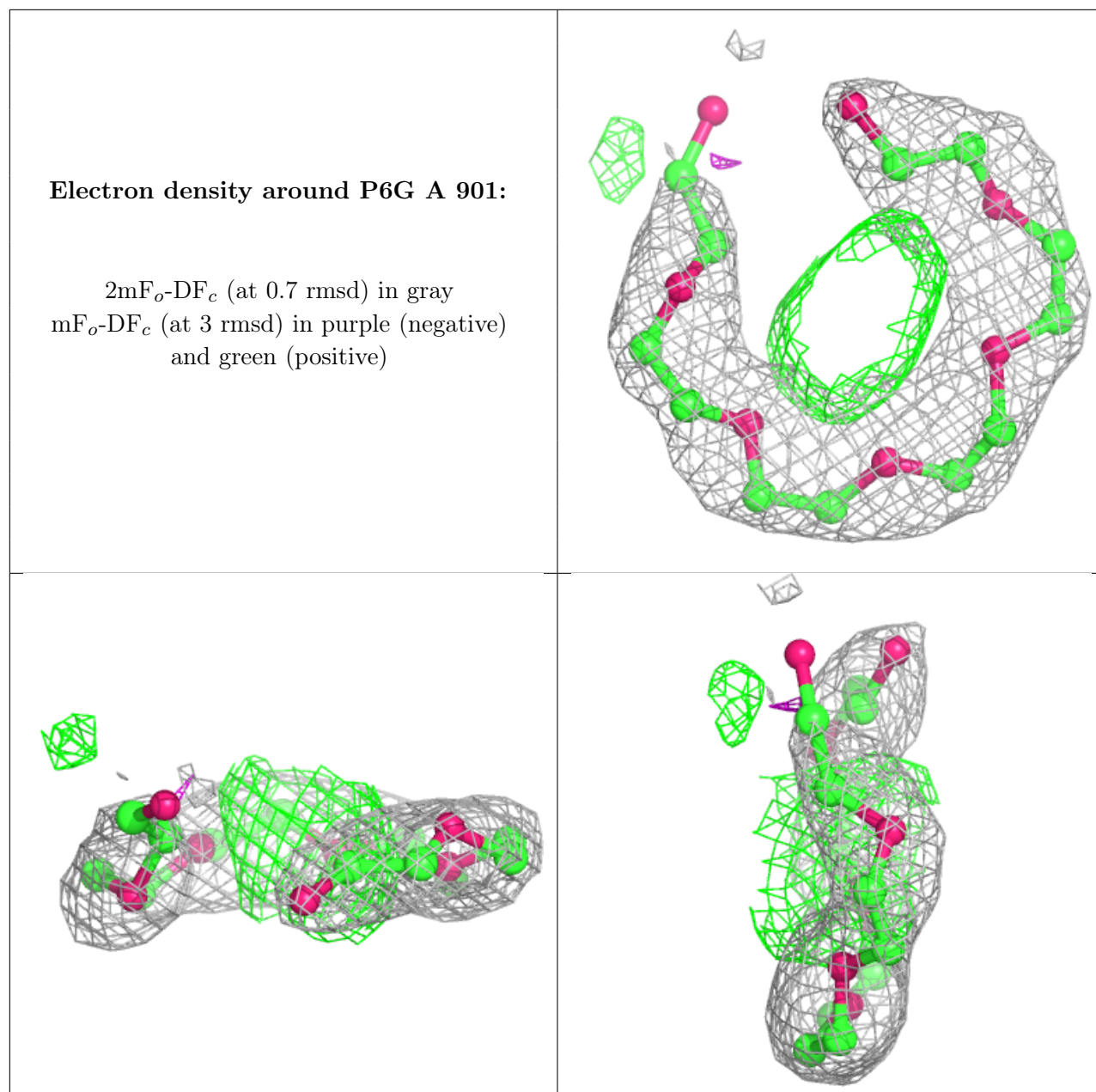
The following is a graphical depiction of the model fit to experimental electron density of all instances of the Ligand of Interest. In addition, ligands with molecular weight > 250 and outliers as shown on the geometry validation Tables will also be included. Each fit is shown from different orientation to approximate a three-dimensional view.



Electron density around TZ4 A 951:

$2mF_o-DF_c$ (at 0.7 rmsd) in gray
 mF_o-DF_c (at 3 rmsd) in purple (negative)
and green (positive)





6.5 Other polymers [i](#)

There are no such residues in this entry.