



Full wwPDB X-ray Structure Validation Report ⓘ

Dec 14, 2024 – 09:54 PM EST

PDB ID : 1POB
Title : CRYSTAL STRUCTURE OF COBRA-VENOM PHOSPHOLIPASE A2 IN A COMPLEX WITH A TRANSITION-STATE ANALOGUE
Authors : White, S.P.; Scott, D.L.; Otwinowski, Z.; Sigler, P.B.
Deposited on : 1992-09-07
Resolution : 2.00 Å(reported)

This is a Full wwPDB X-ray Structure Validation Report for a publicly released PDB entry.

We welcome your comments at validation@mail.wwpdb.org

A user guide is available at

<https://www.wwpdb.org/validation/2017/XrayValidationReportHelp>

with specific help available everywhere you see the ⓘ symbol.

The types of validation reports are described at

<http://www.wwpdb.org/validation/2017/FAQs#types>.

The following versions of software and data (see [references ⓘ](#)) were used in the production of this report:

MolProbity : 4.02b-467
Mogul : 2022.3.0, CSD as543be (2022)
Xtrriage (Phenix) : **NOT EXECUTED**
EDS : **NOT EXECUTED**
buster-report : 1.1.7 (2018)
Percentile statistics : 20231227.v01 (using entries in the PDB archive December 27th 2023)
Ideal geometry (proteins) : Engh & Huber (2001)
Ideal geometry (DNA, RNA) : Parkinson et al. (1996)
Validation Pipeline (wwPDB-VP) : 2.40

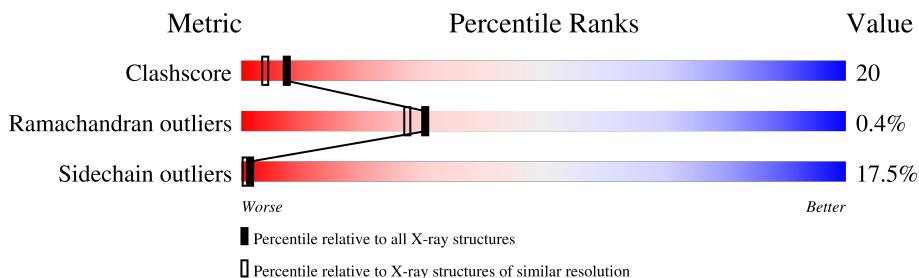
1 Overall quality at a glance

The following experimental techniques were used to determine the structure:

X-RAY DIFFRACTION

The reported resolution of this entry is 2.00 Å.

Percentile scores (ranging between 0-100) for global validation metrics of the entry are shown in the following graphic. The table shows the number of entries on which the scores are based.



Metric	Whole archive (#Entries)	Similar resolution (#Entries, resolution range(Å))
Clashscore	180529	10737 (2.00-2.00)
Ramachandran outliers	177936	10628 (2.00-2.00)
Sidechain outliers	177891	10627 (2.00-2.00)

The table below summarises the geometric issues observed across the polymeric chains and their fit to the electron density. The red, orange, yellow and green segments of the lower bar indicate the fraction of residues that contain outliers for ≥ 3 , 2, 1 and 0 types of geometric quality criteria respectively. A grey segment represents the fraction of residues that are not modelled. The numeric value for each fraction is indicated below the corresponding segment, with a dot representing fractions $\leq 5\%$

Note EDS was not executed.

Mol	Chain	Length	Quality of chain
1	A	118	
1	B	118	

2 Entry composition

There are 4 unique types of molecules in this entry. The entry contains 2136 atoms, of which 0 are hydrogens and 0 are deuteriums.

In the tables below, the ZeroOcc column contains the number of atoms modelled with zero occupancy, the AltConf column contains the number of residues with at least one atom in alternate conformation and the Trace column contains the number of residues modelled with at most 2 atoms.

- Molecule 1 is a protein called PHOSPHOLIPASE A2.

Mol	Chain	Residues	Atoms					ZeroOcc	AltConf	Trace
			Total	C	N	O	S			
1	A	118	914	563	157	179	15	0	0	0
1	B	118	914	563	157	179	15	0	0	0

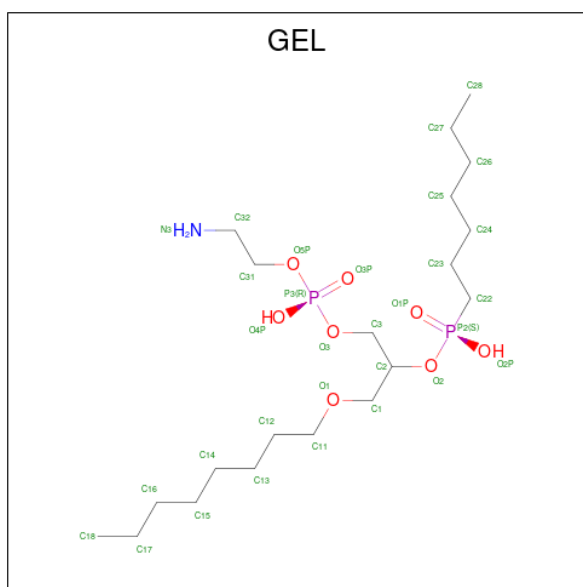
There are 6 discrepancies between the modelled and reference sequences:

Chain	Residue	Modelled	Actual	Comment	Reference
A	107	ASP	ASN	conflict	UNP P00598
A	109	ASP	ASN	conflict	UNP P00598
A	113	ASN	ASP	conflict	UNP P00598
B	107	ASP	ASN	conflict	UNP P00598
B	109	ASP	ASN	conflict	UNP P00598
B	113	ASN	ASP	conflict	UNP P00598

- Molecule 2 is CALCIUM ION (three-letter code: CA) (formula: Ca).

Mol	Chain	Residues	Atoms		ZeroOcc	AltConf
2	A	2	Total 2	Ca 2	0	0
2	B	2	Total 2	Ca 2	0	0

- Molecule 3 is 1-O-OCTYL-2-HEPTYLPHOSPHONYL-SN-GLYCERO-3-PHOSPHOETHA NOLAMINE (three-letter code: GEL) (formula: C₂₀H₄₅NO₈P₂).



Mol	Chain	Residues	Atoms					ZeroOcc	AltConf
3	A	1	Total	C	N	O	P	0	0
			31	20	1	8	2		
3	B	1	Total	C	N	O	P	0	0
			31	20	1	8	2		

- Molecule 4 is water.

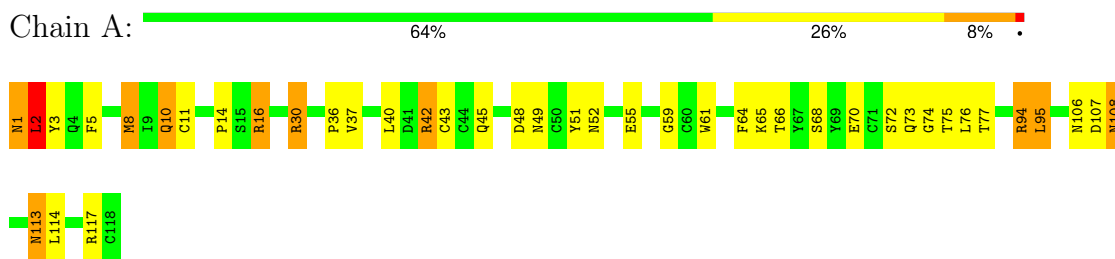
Mol	Chain	Residues	Atoms		ZeroOcc	AltConf
4	A	141	Total	O	0	0
			141	141		
4	B	101	Total	O	0	0
			101	101		

3 Residue-property plots [i](#)

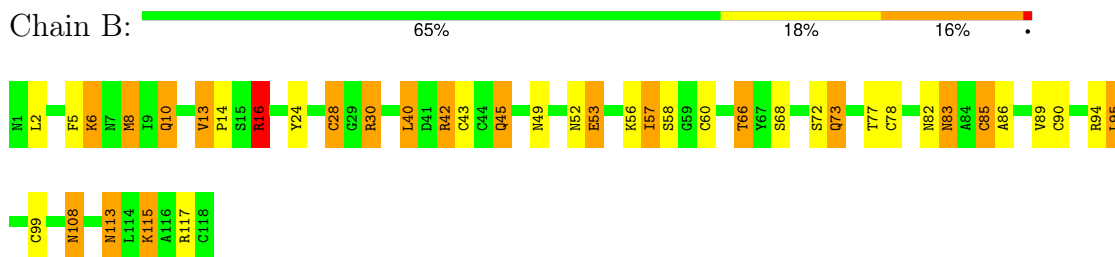
These plots are drawn for all protein, RNA, DNA and oligosaccharide chains in the entry. The first graphic for a chain summarises the proportions of the various outlier classes displayed in the second graphic. The second graphic shows the sequence view annotated by issues in geometry. Residues are color-coded according to the number of geometric quality criteria for which they contain at least one outlier: green = 0, yellow = 1, orange = 2 and red = 3 or more. Stretches of 2 or more consecutive residues without any outlier are shown as a green connector. Residues present in the sample, but not in the model, are shown in grey.

Note EDS was not executed.

- Molecule 1: PHOSPHOLIPASE A2



- Molecule 1: PHOSPHOLIPASE A2



4 Data and refinement statistics

Xtrriage (Phenix) and EDS were not executed - this section is therefore incomplete.

Property	Value	Source
Space group	C 2 2 21	Depositor
Cell constants a, b, c, α , β , γ	34.60Å 73.50Å 181.60Å 90.00° 90.00° 90.00°	Depositor
Resolution (Å)	(Not available) – 2.00	Depositor
% Data completeness (in resolution range)	(Not available) ((Not available)-2.00)	Depositor
R_{merge}	(Not available)	Depositor
R_{sym}	(Not available)	Depositor
Refinement program	PROFFT, X-PLOR	Depositor
R, R_{free}	0.179 , (Not available)	Depositor
Estimated twinning fraction	No twinning to report.	Xtrriage
Total number of atoms	2136	wwPDB-VP
Average B, all atoms (Å ²)	18.0	wwPDB-VP

5 Model quality [i](#)

5.1 Standard geometry [i](#)

Bond lengths and bond angles in the following residue types are not validated in this section: GEL, CA

The Z score for a bond length (or angle) is the number of standard deviations the observed value is removed from the expected value. A bond length (or angle) with $|Z| > 5$ is considered an outlier worth inspection. RMSZ is the root-mean-square of all Z scores of the bond lengths (or angles).

Mol	Chain	Bond lengths		Bond angles	
		RMSZ	# Z >5	RMSZ	# Z >5
1	A	0.96	0/937	1.37	10/1270 (0.8%)
1	B	0.96	0/937	1.32	10/1270 (0.8%)
All	All	0.96	0/1874	1.35	20/2540 (0.8%)

There are no bond length outliers.

All (20) bond angle outliers are listed below:

Mol	Chain	Res	Type	Atoms	Z	Observed(°)	Ideal(°)
1	A	10	GLN	CB-CG-CD	18.94	160.83	111.60
1	A	76	LEU	CB-CG-CD2	11.31	130.23	111.00
1	A	16	ARG	NE-CZ-NH1	11.21	125.91	120.30
1	B	10	GLN	CA-CB-CG	-11.00	89.20	113.40
1	B	42	ARG	NE-CZ-NH1	9.95	125.28	120.30
1	B	16	ARG	NE-CZ-NH1	9.81	125.20	120.30
1	B	42	ARG	CD-NE-CZ	9.50	136.91	123.60
1	B	28	CYS	CA-CB-SG	-8.72	98.30	114.00
1	B	89	VAL	CA-CB-CG1	8.19	123.18	110.90
1	A	42	ARG	NE-CZ-NH1	8.13	124.36	120.30
1	A	94	ARG	NE-CZ-NH1	7.99	124.29	120.30
1	A	76	LEU	CB-CG-CD1	7.38	123.55	111.00
1	A	16	ARG	CD-NE-CZ	7.05	133.47	123.60
1	B	30	ARG	NE-CZ-NH2	7.00	123.80	120.30
1	B	94	ARG	NE-CZ-NH2	6.62	123.61	120.30
1	A	30	ARG	NE-CZ-NH1	6.52	123.56	120.30
1	A	2	LEU	CA-CB-CG	6.07	129.26	115.30
1	B	8	MET	CG-SD-CE	5.50	109.00	100.20
1	B	42	ARG	CG-CD-NE	-5.16	100.96	111.80
1	A	8	MET	CG-SD-CE	5.13	108.41	100.20

There are no chirality outliers.

There are no planarity outliers.

5.2 Too-close contacts

In the following table, the Non-H and H(model) columns list the number of non-hydrogen atoms and hydrogen atoms in the chain respectively. The H(added) column lists the number of hydrogen atoms added and optimized by MolProbity. The Clashes column lists the number of clashes within the asymmetric unit, whereas Symm-Clashes lists symmetry-related clashes.

Mol	Chain	Non-H	H(model)	H(added)	Clashes	Symm-Clashes
1	A	914	0	813	27	38
1	B	914	0	816	42	0
2	A	2	0	0	0	0
2	B	2	0	0	0	0
3	A	31	0	42	5	0
3	B	31	0	43	4	0
4	A	141	0	0	6	9
4	B	101	0	0	9	0
All	All	2136	0	1714	71	39

The all-atom clashscore is defined as the number of clashes found per 1000 atoms (including hydrogen atoms). The all-atom clashscore for this structure is 20.

All (71) close contacts within the same asymmetric unit are listed below, sorted by their clash magnitude.

Atom-1	Atom-2	Interatomic distance (Å)	Clash overlap (Å)
1:A:2:LEU:HD23	3:A:930:GEL:H171	1.40	0.99
1:B:78:CYS:SG	1:B:90:CYS:SG	2.56	0.99
1:A:1:ASN:HD22	1:A:66:THR:HG22	1.30	0.95
1:B:57:ILE:HD12	4:B:650:HOH:O	1.66	0.95
1:A:52:ASN:ND2	4:A:711:HOH:O	1.99	0.93
1:B:68:SER:H	1:B:82:ASN:HD21	1.17	0.91
1:B:57:ILE:HG21	4:B:650:HOH:O	1.73	0.89
1:B:10:GLN:OE1	4:B:499:HOH:O	2.00	0.79
1:B:66:THR:HG23	4:B:464:HOH:O	1.83	0.76
1:B:57:ILE:HD11	1:B:85:CYS:HA	1.68	0.73
1:B:49:ASN:O	1:B:53:GLU:OE2	2.06	0.73
1:A:5:PHE:CD2	4:A:524:HOH:O	2.42	0.72
1:A:106:ASN:HB3	1:A:108:ASN:HD21	1.54	0.72
1:A:108:ASN:HD22	1:A:108:ASN:H	1.42	0.67
1:B:57:ILE:CG2	4:B:650:HOH:O	2.37	0.66
1:B:78:CYS:HG	1:B:90:CYS:HG	0.66	0.65

Continued on next page...

Continued from previous page...

Atom-1	Atom-2	Interatomic distance (Å)	Clash overlap (Å)
1:B:83:ASN:ND2	1:B:86:ALA:H	1.94	0.65
1:B:78:CYS:CB	1:B:90:CYS:SG	2.85	0.64
1:A:51:TYR:O	1:A:55:GLU:HG3	1.96	0.64
1:B:13:VAL:HG22	1:B:13:VAL:O	1.98	0.64
1:B:52:ASN:OD1	3:B:935:GEL:H322	1.97	0.64
1:A:37:VAL:HG22	1:A:117:ARG:HH21	1.63	0.64
1:B:78:CYS:HB3	1:B:90:CYS:SG	2.38	0.63
1:B:68:SER:N	1:B:82:ASN:HD21	1.92	0.62
1:B:57:ILE:CD1	4:B:650:HOH:O	2.37	0.61
1:B:10:GLN:OE1	1:B:10:GLN:HA	2.01	0.59
1:A:2:LEU:CD2	3:A:930:GEL:H171	2.25	0.59
1:B:43:CYS:CB	1:B:99:CYS:SG	2.91	0.59
1:A:1:ASN:ND2	1:A:66:THR:HG22	2.12	0.58
1:B:13:VAL:O	1:B:13:VAL:CG2	2.52	0.58
1:B:24:TYR:CE1	1:B:40:LEU:HD12	2.38	0.58
1:A:108:ASN:H	1:A:108:ASN:ND2	2.02	0.57
1:A:5:PHE:HD2	4:A:524:HOH:O	1.81	0.57
1:B:42:ARG:HD2	1:B:45:GLN:OE1	2.06	0.55
1:B:13:VAL:CG2	1:B:16:ARG:HB3	2.37	0.55
1:B:57:ILE:CB	4:B:650:HOH:O	2.53	0.54
1:A:106:ASN:HB3	1:A:108:ASN:ND2	2.21	0.54
1:A:36:PRO:CB	1:A:42:ARG:HG2	2.39	0.53
1:B:24:TYR:O	1:B:28:CYS:HB2	2.09	0.52
1:A:2:LEU:HD23	3:A:930:GEL:C17	2.28	0.51
1:A:8:MET:O	1:A:11:CYS:HB3	2.09	0.51
1:B:108:ASN:ND2	1:B:108:ASN:H	2.09	0.51
1:A:113:ASN:C	1:A:113:ASN:HD22	2.15	0.50
1:B:57:ILE:HG12	1:B:60:CYS:CB	2.42	0.49
1:A:36:PRO:HB2	1:A:42:ARG:HG2	1.95	0.48
1:B:42:ARG:HA	1:B:45:GLN:HG2	1.96	0.48
1:B:113:ASN:HD21	1:B:115:LYS:HB2	1.79	0.48
1:B:117:ARG:HB3	4:B:713:HOH:O	2.14	0.48
1:A:45:GLN:O	1:A:49:ASN:ND2	2.47	0.47
1:B:68:SER:H	1:B:82:ASN:ND2	2.00	0.47
1:B:30:ARG:HD3	4:B:637:HOH:O	2.13	0.47
3:B:935:GEL:H121	3:B:935:GEL:H11	1.36	0.47
1:B:113:ASN:C	1:B:113:ASN:HD22	2.18	0.46
1:A:48:ASP:OD1	3:A:930:GEL:H32	2.15	0.46
1:B:95:LEU:HD12	1:B:95:LEU:HA	1.88	0.45
1:B:6:LYS:O	1:B:10:GLN:HG2	2.17	0.45
1:A:37:VAL:CG2	1:A:117:ARG:HH21	2.29	0.45

Continued on next page...

Continued from previous page...

Atom-1	Atom-2	Interatomic distance (Å)	Clash overlap (Å)
1:A:14:PRO:HB3	4:A:661:HOH:O	2.17	0.44
3:A:930:GEL:H172	4:A:421:HOH:O	2.17	0.44
1:B:5:PHE:O	1:B:8:MET:HB2	2.18	0.43
1:B:115:LYS:HD3	1:B:115:LYS:HA	1.37	0.43
1:B:13:VAL:HG23	1:B:16:ARG:HB3	2.00	0.42
1:B:13:VAL:HA	1:B:14:PRO:HD2	1.87	0.42
1:B:6:LYS:HB3	3:B:935:GEL:H272	2.02	0.42
1:A:95:LEU:HD12	1:A:95:LEU:HA	1.86	0.42
1:B:53:GLU:O	1:B:56:LYS:HB2	2.20	0.41
1:A:36:PRO:HB2	1:A:42:ARG:CG	2.50	0.41
1:A:61:TRP:HE3	4:A:651:HOH:O	2.04	0.40
1:A:73:GLN:HB2	1:A:74:GLY:H	1.64	0.40
1:B:2:LEU:HD13	3:B:935:GEL:H112	2.04	0.40
1:A:40:LEU:O	1:A:43:CYS:HB2	2.21	0.40

All (39) symmetry-related close contacts are listed below. The label for Atom-2 includes the symmetry operator and encoded unit-cell translations to be applied.

Atom-1	Atom-2	Interatomic distance (Å)	Clash overlap (Å)
1:A:59:GLY:CA	1:A:64:PHE:CB[3_555]	0.46	1.74
1:A:61:TRP:CB	1:A:61:TRP:NE1[3_555]	0.54	1.66
1:A:61:TRP:CG	1:A:61:TRP:CG[3_555]	0.63	1.57
1:A:3:TYR:CZ	1:A:3:TYR:OH[3_655]	0.81	1.39
1:A:64:PHE:CE2	4:A:607:HOH:O[3_555]	0.96	1.24
1:A:61:TRP:CB	1:A:61:TRP:CD1[3_555]	1.08	1.12
1:A:61:TRP:CG	1:A:61:TRP:CD1[3_555]	1.09	1.11
1:A:64:PHE:CZ	4:A:607:HOH:O[3_555]	1.16	1.04
1:A:3:TYR:CE1	1:A:3:TYR:OH[3_655]	1.17	1.03
1:A:3:TYR:CZ	1:A:3:TYR:CZ[3_655]	1.18	1.02
1:A:59:GLY:N	1:A:64:PHE:CB[3_555]	1.30	0.90
1:A:59:GLY:N	1:A:64:PHE:CG[3_555]	1.33	0.87
1:A:64:PHE:CD2	4:A:607:HOH:O[3_555]	1.35	0.85
4:A:417:HOH:O	4:A:454:HOH:O[3_555]	1.35	0.85
1:A:61:TRP:CH2	4:A:612:HOH:O[3_555]	1.43	0.77
1:A:61:TRP:CD2	1:A:61:TRP:CD2[3_555]	1.53	0.67
1:A:61:TRP:CB	1:A:61:TRP:CE2[3_555]	1.54	0.66
1:A:61:TRP:CG	1:A:61:TRP:CD2[3_555]	1.55	0.65
1:A:61:TRP:CD1	1:A:61:TRP:CD1[3_555]	1.57	0.63
1:A:64:PHE:CE1	4:A:607:HOH:O[3_555]	1.64	0.56
1:A:3:TYR:OH	1:A:3:TYR:OH[3_655]	1.66	0.54

Continued on next page...

Continued from previous page...

Atom-1	Atom-2	Interatomic distance (Å)	Clash overlap (Å)
1:A:59:GLY:N	1:A:64:PHE:CD1[3_555]	1.66	0.54
1:A:3:TYR:CE1	1:A:3:TYR:CZ[3_655]	1.75	0.45
1:A:64:PHE:CG	4:A:607:HOH:O[3_555]	1.79	0.41
1:A:59:GLY:CA	1:A:64:PHE:CA[3_555]	1.81	0.39
1:A:61:TRP:CA	1:A:61:TRP:NE1[3_555]	1.84	0.36
1:A:59:GLY:CA	1:A:64:PHE:CG[3_555]	1.85	0.35
1:A:3:TYR:CE2	1:A:3:TYR:OH[3_655]	1.89	0.31
1:A:64:PHE:CD1	4:A:607:HOH:O[3_555]	1.90	0.30
1:A:61:TRP:CG	1:A:61:TRP:NE1[3_555]	1.92	0.28
1:A:61:TRP:CB	1:A:61:TRP:CG[3_555]	1.93	0.27
1:A:65:LYS:NZ	1:A:65:LYS:NZ[3_555]	1.93	0.27
1:A:59:GLY:C	1:A:64:PHE:CB[3_555]	1.97	0.23
1:A:61:TRP:CE3	1:A:61:TRP:CE3[3_555]	2.02	0.18
1:A:61:TRP:CG	1:A:61:TRP:CE2[3_555]	2.11	0.09
1:A:61:TRP:CD2	1:A:61:TRP:CE3[3_555]	2.11	0.09
1:A:61:TRP:CB	1:A:61:TRP:CD2[3_555]	2.13	0.07
1:A:61:TRP:CZ2	4:A:419:HOH:O[3_555]	2.16	0.04
1:A:61:TRP:CA	1:A:61:TRP:CD1[3_555]	2.18	0.02

5.3 Torsion angles [i](#)

5.3.1 Protein backbone [i](#)

In the following table, the Percentiles column shows the percent Ramachandran outliers of the chain as a percentile score with respect to all X-ray entries followed by that with respect to entries of similar resolution.

The Analysed column shows the number of residues for which the backbone conformation was analysed, and the total number of residues.

Mol	Chain	Analysed	Favoured	Allowed	Outliers	Percentiles	
1	A	116/118 (98%)	113 (97%)	3 (3%)	0	100	100
1	B	116/118 (98%)	112 (97%)	3 (3%)	1 (1%)	14	10
All	All	232/236 (98%)	225 (97%)	6 (3%)	1 (0%)	30	27

All (1) Ramachandran outliers are listed below:

Mol	Chain	Res	Type
1	B	73	GLN

5.3.2 Protein sidechains [i](#)

In the following table, the Percentiles column shows the percent sidechain outliers of the chain as a percentile score with respect to all X-ray entries followed by that with respect to entries of similar resolution.

The Analysed column shows the number of residues for which the sidechain conformation was analysed, and the total number of residues.

Mol	Chain	Analysed	Rotameric	Outliers	Percentiles	
1	A	97/97 (100%)	81 (84%)	16 (16%)	2	1
1	B	97/97 (100%)	79 (81%)	18 (19%)	1	0
All	All	194/194 (100%)	160 (82%)	34 (18%)	1	1

All (34) residues with a non-rotameric sidechain are listed below:

Mol	Chain	Res	Type
1	A	1	ASN
1	A	2	LEU
1	A	10	GLN
1	A	16	ARG
1	A	30	ARG
1	A	68	SER
1	A	70	GLU
1	A	72	SER
1	A	75	THR
1	A	77	THR
1	A	94	ARG
1	A	95	LEU
1	A	107	ASP
1	A	108	ASN
1	A	113	ASN
1	A	114	LEU
1	B	6	LYS
1	B	13	VAL
1	B	16	ARG
1	B	40	LEU
1	B	45	GLN
1	B	53	GLU
1	B	57	ILE
1	B	58	SER
1	B	66	THR
1	B	72	SER
1	B	73	GLN

Continued on next page...

Continued from previous page...

Mol	Chain	Res	Type
1	B	77	THR
1	B	83	ASN
1	B	85	CYS
1	B	95	LEU
1	B	108	ASN
1	B	113	ASN
1	B	115	LYS

Sometimes sidechains can be flipped to improve hydrogen bonding and reduce clashes. All (8) such sidechains are listed below:

Mol	Chain	Res	Type
1	A	7	ASN
1	A	108	ASN
1	A	113	ASN
1	B	10	GLN
1	B	49	ASN
1	B	82	ASN
1	B	83	ASN
1	B	113	ASN

5.3.3 RNA [i](#)

There are no RNA molecules in this entry.

5.4 Non-standard residues in protein, DNA, RNA chains [i](#)

There are no non-standard protein/DNA/RNA residues in this entry.

5.5 Carbohydrates [i](#)

There are no oligosaccharides in this entry.

5.6 Ligand geometry [i](#)

Of 6 ligands modelled in this entry, 4 are monoatomic - leaving 2 for Mogul analysis.

In the following table, the Counts columns list the number of bonds (or angles) for which Mogul statistics could be retrieved, the number of bonds (or angles) that are observed in the model and the number of bonds (or angles) that are defined in the Chemical Component Dictionary. The

Link column lists molecule types, if any, to which the group is linked. The Z score for a bond length (or angle) is the number of standard deviations the observed value is removed from the expected value. A bond length (or angle) with $|Z| > 2$ is considered an outlier worth inspection. RMSZ is the root-mean-square of all Z scores of the bond lengths (or angles).

Mol	Type	Chain	Res	Link	Bond lengths			Bond angles		
					Counts	RMSZ	# Z > 2	Counts	RMSZ	# Z > 2
3	GEL	B	935	2	30,30,30	1.02	2 (6%)	29,36,36	2.38	8 (27%)
3	GEL	A	930	2	30,30,30	1.15	3 (10%)	29,36,36	1.92	4 (13%)

In the following table, the Chirals column lists the number of chiral outliers, the number of chiral centers analysed, the number of these observed in the model and the number defined in the Chemical Component Dictionary. Similar counts are reported in the Torsion and Rings columns. '2' means no outliers of that kind were identified.

Mol	Type	Chain	Res	Link	Chirals	Torsions	Rings
3	GEL	B	935	2	-	13/33/34/34	-
3	GEL	A	930	2	-	15/33/34/34	-

All (5) bond length outliers are listed below:

Mol	Chain	Res	Type	Atoms	Z	Observed(Å)	Ideal(Å)
3	A	930	GEL	P2-O2P	-3.47	1.47	1.56
3	B	935	GEL	P2-O2	3.15	1.62	1.57
3	A	930	GEL	P2-O2	3.08	1.62	1.57
3	B	935	GEL	P2-O2P	-2.98	1.49	1.56
3	A	930	GEL	P2-C22	2.89	1.84	1.80

All (12) bond angle outliers are listed below:

Mol	Chain	Res	Type	Atoms	Z	Observed(°)	Ideal(°)
3	A	930	GEL	O2-P2-O1P	-6.91	102.46	115.27
3	B	935	GEL	O2-P2-O1P	-6.88	102.50	115.27
3	B	935	GEL	O2P-P2-C22	5.85	119.33	105.54
3	A	930	GEL	O2-P2-C22	5.21	117.84	104.23
3	B	935	GEL	C28-C27-C26	4.45	143.39	113.36
3	B	935	GEL	C3-C2-C1	3.74	120.50	111.78
3	B	935	GEL	O2-P2-C22	3.55	113.52	104.23
3	B	935	GEL	C15-C14-C13	3.04	129.76	114.37
3	A	930	GEL	O2P-P2-C22	2.98	112.58	105.54
3	B	935	GEL	O2P-P2-O1P	-2.82	100.78	109.95
3	B	935	GEL	P3-O5P-C31	2.39	132.65	121.26
3	A	930	GEL	C3-C2-C1	2.30	117.14	111.78

There are no chirality outliers.

All (28) torsion outliers are listed below:

Mol	Chain	Res	Type	Atoms
3	A	930	GEL	C2-O2-P2-O1P
3	A	930	GEL	C23-C22-P2-O2
3	A	930	GEL	C23-C22-P2-O1P
3	A	930	GEL	C23-C22-P2-O2P
3	A	930	GEL	C31-O5P-P3-O3P
3	A	930	GEL	O5P-C31-C32-N3
3	B	935	GEL	C2-O2-P2-O1P
3	B	935	GEL	C2-C3-O3-P3
3	B	935	GEL	O5P-C31-C32-N3
3	B	935	GEL	C12-C11-O1-C1
3	B	935	GEL	C13-C14-C15-C16
3	A	930	GEL	O1-C11-C12-C13
3	A	930	GEL	C11-C12-C13-C14
3	B	935	GEL	C22-C23-C24-C25
3	B	935	GEL	C14-C15-C16-C17
3	B	935	GEL	C25-C26-C27-C28
3	B	935	GEL	O1-C11-C12-C13
3	B	935	GEL	C15-C16-C17-C18
3	A	930	GEL	C14-C15-C16-C17
3	B	935	GEL	C23-C24-C25-C26
3	A	930	GEL	C24-C25-C26-C27
3	A	930	GEL	C12-C13-C14-C15
3	B	935	GEL	C11-C12-C13-C14
3	A	930	GEL	C2-C3-O3-P3
3	B	935	GEL	C31-O5P-P3-O3P
3	A	930	GEL	C23-C24-C25-C26
3	A	930	GEL	C25-C26-C27-C28
3	A	930	GEL	C2-C1-O1-C11

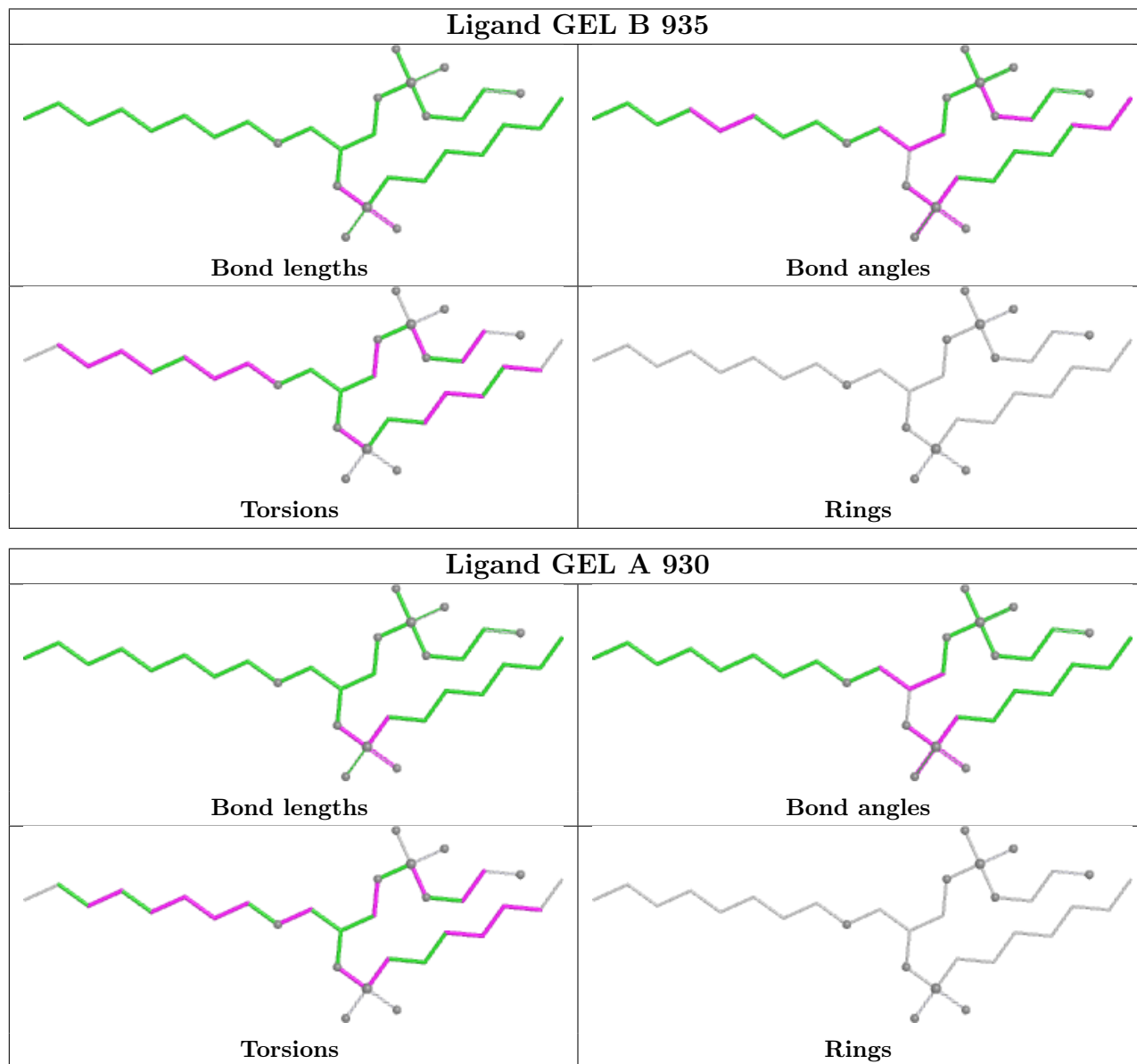
There are no ring outliers.

2 monomers are involved in 9 short contacts:

Mol	Chain	Res	Type	Clashes	Symm-Clashes
3	B	935	GEL	4	0
3	A	930	GEL	5	0

The following is a two-dimensional graphical depiction of Mogul quality analysis of bond lengths, bond angles, torsion angles, and ring geometry for all instances of the Ligand of Interest. In addition, ligands with molecular weight > 250 and outliers as shown on the validation Tables will also be included. For torsion angles, if less than 5% of the Mogul distribution of torsion angles is

within 10 degrees of the torsion angle in question, then that torsion angle is considered an outlier. Any bond that is central to one or more torsion angles identified as an outlier by Mogul will be highlighted in the graph. For rings, the root-mean-square deviation (RMSD) between the ring in question and similar rings identified by Mogul is calculated over all ring torsion angles. If the average RMSD is greater than 60 degrees and the minimal RMSD between the ring in question and any Mogul-identified rings is also greater than 60 degrees, then that ring is considered an outlier. The outliers are highlighted in purple. The color gray indicates Mogul did not find sufficient equivalents in the CSD to analyse the geometry.



5.7 Other polymers [\(i\)](#)

There are no such residues in this entry.

5.8 Polymer linkage issues

There are no chain breaks in this entry.

6 Fit of model and data

6.1 Protein, DNA and RNA chains

EDS was not executed - this section is therefore empty.

6.2 Non-standard residues in protein, DNA, RNA chains

EDS was not executed - this section is therefore empty.

6.3 Carbohydrates

EDS was not executed - this section is therefore empty.

6.4 Ligands

EDS was not executed - this section is therefore empty.

6.5 Other polymers

EDS was not executed - this section is therefore empty.