



# Full wwPDB X-ray Structure Validation Report ⓘ

Jun 13, 2024 – 12:34 PM EDT

PDB ID : 1NIU  
Title : ALANINE RACEMASE WITH BOUND INHIBITOR DERIVED FROM L-CYCLOSERINE  
Authors : Fenn, T.D.; Stamper, G.F.; Morollo, A.A.; Ringe, D.  
Deposited on : 2002-12-26  
Resolution : 2.20 Å(reported)

This is a Full wwPDB X-ray Structure Validation Report for a publicly released PDB entry.

We welcome your comments at [validation@mail.wwpdb.org](mailto:validation@mail.wwpdb.org)

A user guide is available at

<https://www.wwpdb.org/validation/2017/XrayValidationReportHelp>

with specific help available everywhere you see the ⓘ symbol.

The types of validation reports are described at

<http://www.wwpdb.org/validation/2017/FAQs#types>.

---

The following versions of software and data (see [references ⓘ](#)) were used in the production of this report:

MolProbity : 4.02b-467  
Mogul : 1.8.5 (274361), CSD as541be (2020)  
Xtriage (Phenix) : 1.13  
EDS : 2.36.2  
buster-report : 1.1.7 (2018)  
Percentile statistics : 20191225.v01 (using entries in the PDB archive December 25th 2019)  
Refmac : 5.8.0158  
CCP4 : 7.0.044 (Gargrove)  
Ideal geometry (proteins) : Engh & Huber (2001)  
Ideal geometry (DNA, RNA) : Parkinson et al. (1996)  
Validation Pipeline (wwPDB-VP) : 2.36.2

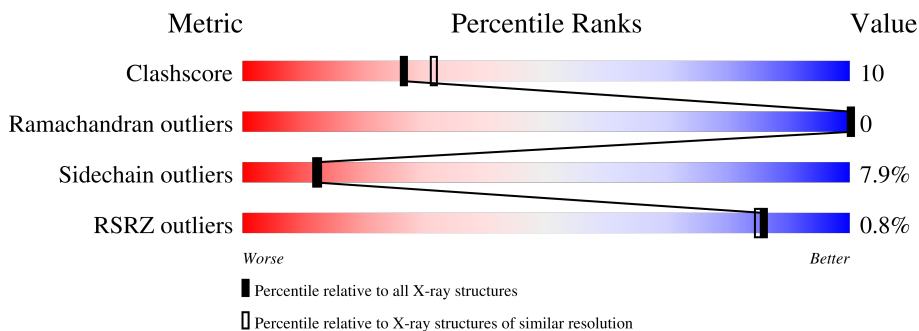
# 1 Overall quality at a glance

The following experimental techniques were used to determine the structure:

*X-RAY DIFFRACTION*

The reported resolution of this entry is 2.20 Å.

Percentile scores (ranging between 0-100) for global validation metrics of the entry are shown in the following graphic. The table shows the number of entries on which the scores are based.



Metric	Whole archive (#Entries)	Similar resolution (#Entries, resolution range(Å))
Clashscore	141614	5594 (2.20-2.20)
Ramachandran outliers	138981	5503 (2.20-2.20)
Sidechain outliers	138945	5504 (2.20-2.20)
RSRZ outliers	127900	4800 (2.20-2.20)

The table below summarises the geometric issues observed across the polymeric chains and their fit to the electron density. The red, orange, yellow and green segments of the lower bar indicate the fraction of residues that contain outliers for  $\geq 3$ , 2, 1 and 0 types of geometric quality criteria respectively. A grey segment represents the fraction of residues that are not modelled. The numeric value for each fraction is indicated below the corresponding segment, with a dot representing fractions  $\leq 5\%$ . The upper red bar (where present) indicates the fraction of residues that have poor fit to the electron density. The numeric value is given above the bar.

Mol	Chain	Length	Quality of chain
1	A	388	
1	B	388	

The following table lists non-polymeric compounds, carbohydrate monomers and non-standard residues in protein, DNA, RNA chains that are outliers for geometric or electron-density-fit criteria:

Mol	Type	Chain	Res	Chirality	Geometry	Clashes	Electron density
1	KCX	B	129	-	-	X	-
2	DCS	A	800	X	-	X	-

*Continued on next page...*

*Continued from previous page...*

<b>Mol</b>	<b>Type</b>	<b>Chain</b>	<b>Res</b>	<b>Chirality</b>	<b>Geometry</b>	<b>Clashes</b>	<b>Electron density</b>
2	DCS	B	900	X	-	-	-

## 2 Entry composition [i](#)

There are 3 unique types of molecules in this entry. The entry contains 6387 atoms, of which 0 are hydrogens and 0 are deuteriums.

In the tables below, the ZeroOcc column contains the number of atoms modelled with zero occupancy, the AltConf column contains the number of residues with at least one atom in alternate conformation and the Trace column contains the number of residues modelled with at most 2 atoms.

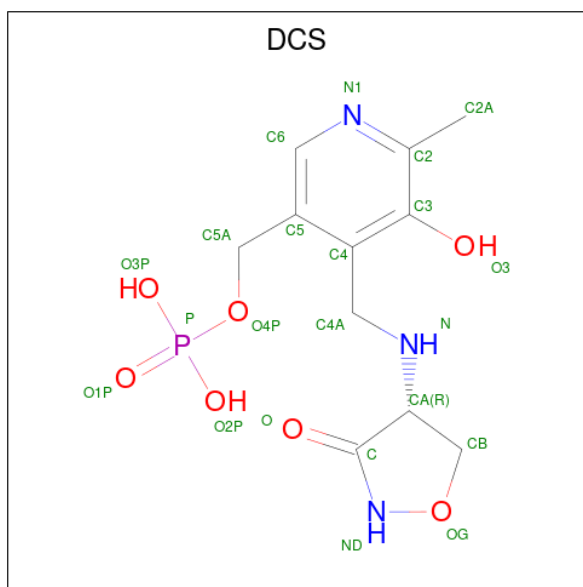
- Molecule 1 is a protein called Alanine Racemase.

Mol	Chain	Residues	Atoms					ZeroOcc	AltConf	Trace
			Total	C	N	O	S			
1	A	382	Total 3033	C 1941	N 538	O 541	S 13	0	0	0
1	B	380	Total 3024	C 1936	N 536	O 539	S 13	0	0	0

There are 2 discrepancies between the modelled and reference sequences:

Chain	Residue	Modelled	Actual	Comment	Reference
A	129	KCX	LYS	MODIFIED RESIDUE	UNP P10724
B	129	KCX	LYS	MODIFIED RESIDUE	UNP P10724

- Molecule 2 is D-[3-HYDROXY-2-METHYL-5-PHOSPHONOXYMETHYL-PYRIDIN-4-YLMETHYL]-N,O-CYCLOSERYLAMIDE (three-letter code: DCS) (formula:  $C_{11}H_{16}N_3O_7P$ ).



Mol	Chain	Residues	Atoms					ZeroOcc	AltConf
2	A	1	Total	C	N	O	P	0	0
			22	11	3	7	1		
2	B	1	Total	C	N	O	P	0	0
			22	11	3	7	1		

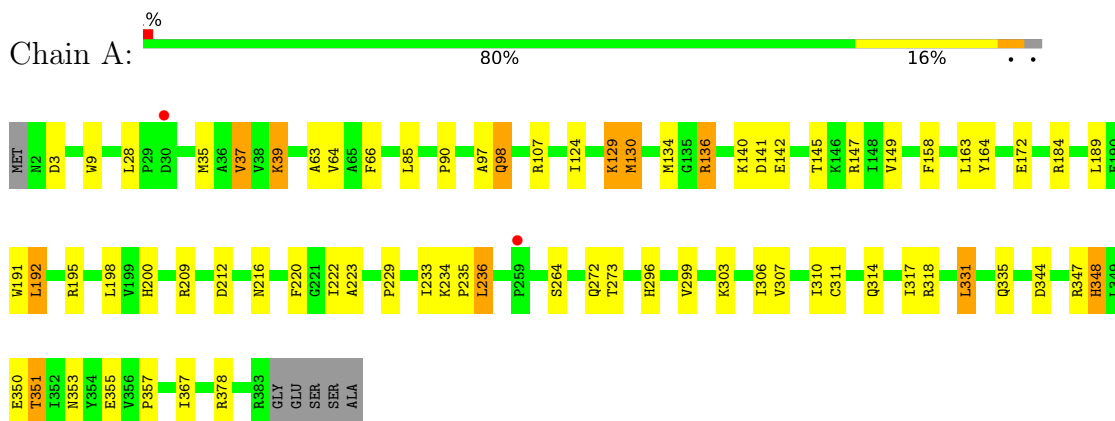
- Molecule 3 is water.

Mol	Chain	Residues	Atoms		ZeroOcc	AltConf
3	A	139	Total	O	0	0
			139	139		
3	B	147	Total	O	0	0
			147	147		

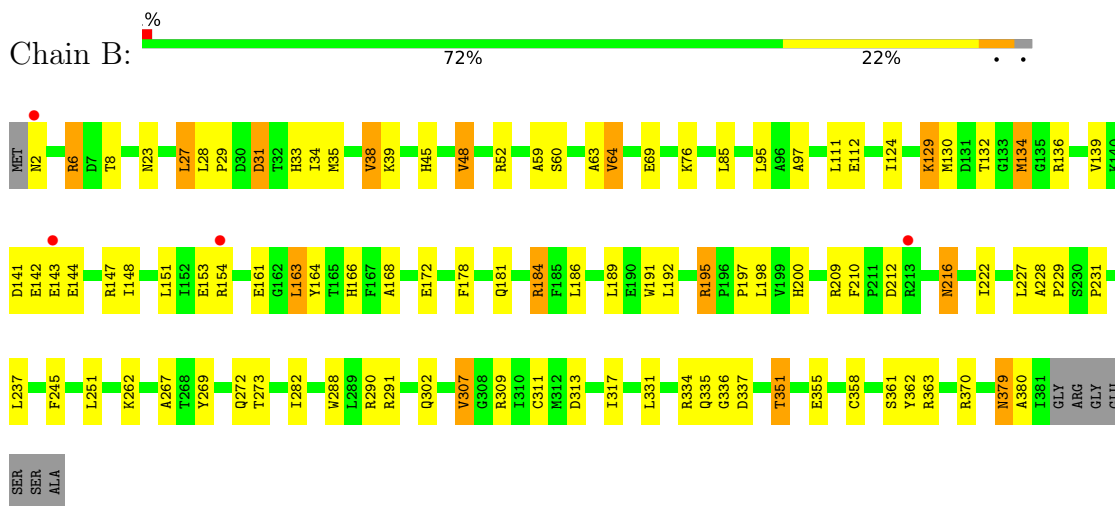
### 3 Residue-property plots

These plots are drawn for all protein, RNA, DNA and oligosaccharide chains in the entry. The first graphic for a chain summarises the proportions of the various outlier classes displayed in the second graphic. The second graphic shows the sequence view annotated by issues in geometry and electron density. Residues are color-coded according to the number of geometric quality criteria for which they contain at least one outlier: green = 0, yellow = 1, orange = 2 and red = 3 or more. A red dot above a residue indicates a poor fit to the electron density ( $RSRZ > 2$ ). Stretches of 2 or more consecutive residues without any outlier are shown as a green connector. Residues present in the sample, but not in the model, are shown in grey.

#### • Molecule 1: Alanine Racemase



#### • Molecule 1: Alanine Racemase



## 4 Data and refinement statistics

Property	Value	Source
Space group	P 21 21 21	Depositor
Cell constants a, b, c, $\alpha$ , $\beta$ , $\gamma$	99.16Å 90.24Å 85.26Å 90.00° 90.00° 90.00°	Depositor
Resolution (Å)	35.00 – 2.20 28.79 – 2.20	Depositor EDS
% Data completeness (in resolution range)	(Not available) (35.00-2.20) 86.9 (28.79-2.20)	Depositor EDS
$R_{merge}$	(Not available)	Depositor
$R_{sym}$	(Not available)	Depositor
$\langle I/\sigma(I) \rangle$ <sup>1</sup>	2.08 (at 2.20Å)	Xtrriage
Refinement program	CNS	Depositor
R, $R_{free}$	0.194 , 0.231 0.188 , (Not available)	Depositor DCC
$R_{free}$ test set	No test flags present.	wwPDB-VP
Wilson B-factor (Å <sup>2</sup> )	23.4	Xtrriage
Anisotropy	0.396	Xtrriage
Bulk solvent $k_{sol}$ (e/Å <sup>3</sup> ), $B_{sol}$ (Å <sup>2</sup> )	0.30 , 52.9	EDS
L-test for twinning <sup>2</sup>	$\langle  L  \rangle = 0.48$ , $\langle L^2 \rangle = 0.31$	Xtrriage
Estimated twinning fraction	No twinning to report.	Xtrriage
$F_o, F_c$ correlation	0.95	EDS
Total number of atoms	6387	wwPDB-VP
Average B, all atoms (Å <sup>2</sup> )	26.0	wwPDB-VP

Xtrriage's analysis on translational NCS is as follows: *The largest off-origin peak in the Patterson function is 4.65% of the height of the origin peak. No significant pseudotranslation is detected.*

<sup>1</sup>Intensities estimated from amplitudes.

<sup>2</sup>Theoretical values of  $\langle |L| \rangle$ ,  $\langle L^2 \rangle$  for acentric reflections are 0.5, 0.333 respectively for untwinned datasets, and 0.375, 0.2 for perfectly twinned datasets.

## 5 Model quality [i](#)

### 5.1 Standard geometry [i](#)

Bond lengths and bond angles in the following residue types are not validated in this section: DCS, KCX

The Z score for a bond length (or angle) is the number of standard deviations the observed value is removed from the expected value. A bond length (or angle) with  $|Z| > 5$  is considered an outlier worth inspection. RMSZ is the root-mean-square of all Z scores of the bond lengths (or angles).

Mol	Chain	Bond lengths		Bond angles	
		RMSZ	# $ Z  > 5$	RMSZ	# $ Z  > 5$
1	A	0.45	0/3098	0.80	5/4211 (0.1%)
1	B	0.47	1/3089 (0.0%)	0.80	3/4199 (0.1%)
All	All	0.46	1/6187 (0.0%)	0.80	8/8410 (0.1%)

All (1) bond length outliers are listed below:

Mol	Chain	Res	Type	Atoms	Z	Observed(Å)	Ideal(Å)
1	B	358	CYS	C-O	7.61	1.37	1.23

All (8) bond angle outliers are listed below:

Mol	Chain	Res	Type	Atoms	Z	Observed(°)	Ideal(°)
1	A	136	ARG	NE-CZ-NH1	-11.16	114.72	120.30
1	A	136	ARG	NE-CZ-NH2	9.40	125.00	120.30
1	B	27	LEU	CA-CB-CG	7.04	131.50	115.30
1	B	361	SER	N-CA-C	6.28	127.96	111.00
1	A	130	MET	N-CA-C	-5.32	96.64	111.00
1	B	28	LEU	CA-CB-CG	5.13	127.10	115.30
1	A	192	LEU	CA-CB-CG	5.05	126.92	115.30
1	A	28	LEU	CA-CB-CG	5.03	126.86	115.30

There are no chirality outliers.

There are no planarity outliers.

### 5.2 Too-close contacts [i](#)

In the following table, the Non-H and H(model) columns list the number of non-hydrogen atoms and hydrogen atoms in the chain respectively. The H(added) column lists the number of hydrogen atoms added and optimized by MolProbity. The Clashes column lists the number of clashes within



the asymmetric unit, whereas Symm-Clashes lists symmetry-related clashes.

Mol	Chain	Non-H	H(model)	H(added)	Clashes	Symm-Clashes
1	A	3033	0	3016	52	0
1	B	3024	0	3011	77	0
2	A	22	0	12	7	0
2	B	22	0	13	6	0
3	A	139	0	0	6	0
3	B	147	0	0	10	0
All	All	6387	0	6052	125	0

The all-atom clashscore is defined as the number of clashes found per 1000 atoms (including hydrogen atoms). The all-atom clashscore for this structure is 10.

All (125) close contacts within the same asymmetric unit are listed below, sorted by their clash magnitude.

Atom-1	Atom-2	Interatomic distance (Å)	Clash overlap (Å)
1:B:351:THR:HG21	1:B:355:GLU:OE1	1.59	1.00
1:B:141:ASP:OD1	1:B:144:GLU:HB2	1.62	1.00
1:B:52:ARG:HD2	3:B:655:HOH:O	1.66	0.94
1:B:129:KCX:C	1:B:130:MET:N	2.31	0.94
1:A:351:THR:HG21	1:A:355:GLU:OE1	1.69	0.93
1:B:85:LEU:HD22	2:B:900:DCS:H2A3	1.49	0.92
1:A:163:LEU:HD21	1:A:189:LEU:HD22	1.52	0.91
1:A:163:LEU:HD21	1:A:189:LEU:CD2	2.10	0.82
1:B:129:KCX:OQ2	1:B:136:ARG:NH2	2.12	0.81
1:B:195:ARG:HG3	1:B:195:ARG:HH11	1.47	0.79
1:B:39:LYS:CE	2:B:900:DCS:H4A1	2.13	0.78
1:A:136:ARG:NH1	2:A:800:DCS:O	2.17	0.77
1:B:198:LEU:HD21	3:B:669:HOH:O	1.84	0.76
1:B:195:ARG:HH11	1:B:195:ARG:CG	1.98	0.75
1:B:163:LEU:HD13	1:B:192:LEU:HD11	1.68	0.74
1:A:39:LYS:HE2	1:B:313:ASP:OD2	1.87	0.73
1:A:198:LEU:HA	1:A:216:ASN:HD21	1.52	0.73
1:B:132:THR:O	1:B:181:GLN:HG2	1.90	0.72
1:B:143:GLU:HA	1:B:143:GLU:OE1	1.88	0.72
1:A:129:KCX:OQ2	1:A:136:ARG:HB3	1.92	0.69
1:A:129:KCX:C	1:A:130:MET:N	2.55	0.68
1:B:309:ARG:NH1	3:B:679:HOH:O	2.25	0.68
1:B:195:ARG:HG3	1:B:195:ARG:NH1	2.05	0.68
1:A:348:HIS:CE1	3:A:544:HOH:O	2.48	0.67
1:A:130:MET:N	1:A:164:TYR:O	2.28	0.67
1:B:33:HIS:HD2	1:B:60:SER:OG	1.79	0.66

*Continued on next page...*

*Continued from previous page...*

Atom-1	Atom-2	Interatomic distance (Å)	Clash overlap (Å)
1:B:33:HIS:CE1	3:B:669:HOH:O	2.49	0.66
1:B:38:VAL:HG13	1:B:38:VAL:O	1.95	0.65
1:B:262:LYS:HD3	1:B:267:ALA:HB1	1.79	0.64
1:B:136:ARG:NH1	2:B:900:DCS:O	2.30	0.64
1:B:129:KCX:CX	1:B:136:ARG:HH21	2.11	0.63
1:B:134:MET:HB2	3:B:616:HOH:O	1.98	0.63
1:B:334:ARG:NH1	1:B:336:GLY:O	2.32	0.63
1:B:130:MET:N	1:B:164:TYR:O	2.33	0.62
1:A:378:ARG:NH2	3:A:665:HOH:O	2.33	0.61
1:B:39:LYS:HE3	2:B:900:DCS:H4A1	1.82	0.61
1:B:134:MET:HB3	3:B:604:HOH:O	2.02	0.60
1:A:85:LEU:HD22	2:A:800:DCS:H2A3	1.83	0.59
1:B:134:MET:HE3	1:B:168:ALA:HA	1.86	0.58
1:A:163:LEU:HD22	1:A:192:LEU:HD11	1.86	0.58
1:B:198:LEU:HA	1:B:216:ASN:HD21	1.69	0.58
1:B:39:LYS:NZ	2:B:900:DCS:H4A1	2.18	0.57
1:A:97:ALA:HB2	1:A:124:ILE:HG12	1.87	0.57
1:A:350:GLU:HB2	1:B:291:ARG:HH22	1.70	0.56
1:A:163:LEU:CD2	1:A:189:LEU:HD22	2.31	0.55
1:B:129:KCX:OQ2	1:B:166:HIS:CB	2.55	0.55
1:B:6:ARG:HD3	1:B:8:THR:HB	1.89	0.54
1:A:314:GLN:HG3	1:B:136:ARG:HD2	1.90	0.53
1:A:66:PHE:HZ	1:B:363:ARG:HG2	1.73	0.53
1:A:348:HIS:HE1	3:A:544:HOH:O	1.90	0.52
1:B:38:VAL:O	1:B:38:VAL:CG1	2.57	0.52
1:A:209:ARG:HH11	1:A:236:LEU:HD12	1.74	0.52
1:A:124:ILE:HD12	1:A:158:PHE:CE1	2.45	0.51
1:A:220:PHE:CE1	1:A:223:ALA:HB3	2.45	0.51
1:A:163:LEU:HD22	1:A:192:LEU:CD1	2.41	0.51
1:A:311:CYS:HB2	1:A:314:GLN:O	2.11	0.51
1:B:97:ALA:HB2	1:B:124:ILE:HG12	1.92	0.50
1:A:134:MET:HB3	3:A:494:HOH:O	2.10	0.50
1:A:311:CYS:HB3	2:B:900:DCS:O	2.12	0.50
1:B:33:HIS:CD2	1:B:60:SER:OG	2.64	0.50
1:B:129:KCX:OQ2	1:B:166:HIS:CG	2.65	0.49
1:A:39:LYS:HZ2	2:A:800:DCS:H4A1	1.78	0.49
1:B:48:VAL:HG11	1:B:76:LYS:HB3	1.94	0.49
1:A:234:LYS:N	1:A:235:PRO:HD2	2.28	0.49
1:B:186:LEU:HA	1:B:189:LEU:HD12	1.95	0.48
1:B:143:GLU:OE1	1:B:143:GLU:CA	2.60	0.48
1:B:172:GLU:O	1:B:209:ARG:NH2	2.47	0.48

*Continued on next page...*

*Continued from previous page...*

Atom-1	Atom-2	Interatomic distance (Å)	Clash overlap (Å)
1:B:45:HIS:NE2	1:B:245:PHE:HB2	2.30	0.47
1:B:129:KCX:C	1:B:130:MET:CA	2.92	0.47
1:B:134:MET:HG2	1:B:168:ALA:HB2	1.96	0.47
1:B:370:ARG:NH2	3:B:424:HOH:O	2.46	0.47
1:A:140:LYS:HE3	3:B:641:HOH:O	2.15	0.46
1:A:351:THR:HG22	1:B:290:ARG:HE	1.81	0.46
1:A:90:PRO:HG2	3:A:418:HOH:O	2.14	0.46
1:B:222:ILE:HG13	1:B:227:LEU:HB2	1.98	0.46
1:B:64:VAL:HG13	1:B:69:GLU:HB2	1.98	0.46
1:B:129:KCX:CX	1:B:166:HIS:HB3	2.46	0.46
1:B:35:MET:SD	1:B:63:ALA:HB2	2.56	0.45
2:A:800:DCS:O3	2:A:800:DCS:N	2.46	0.45
1:A:37:VAL:HB	1:A:63:ALA:HB3	1.98	0.45
1:B:331:LEU:HD12	1:B:331:LEU:N	2.31	0.45
1:A:147:ARG:HG3	1:A:147:ARG:HH11	1.81	0.45
1:A:129:KCX:C	1:A:130:MET:CA	2.94	0.45
2:A:800:DCS:HND	1:B:311:CYS:HB3	1.82	0.45
1:B:29:PRO:HB2	1:B:31:ASP:OD1	2.17	0.45
1:B:151:LEU:CD2	1:B:154:ARG:HH21	2.30	0.44
1:A:331:LEU:N	1:A:331:LEU:CD2	2.81	0.44
1:A:331:LEU:N	1:A:331:LEU:HD22	2.32	0.44
1:B:362:TYR:O	1:B:380:ALA:HB3	2.16	0.44
1:A:9:TRP:CD1	1:A:367:ILE:HD12	2.52	0.44
1:A:145:THR:O	1:A:149:VAL:HG23	2.18	0.44
1:B:151:LEU:HD23	1:B:154:ARG:HH21	1.83	0.44
1:B:141:ASP:OD1	1:B:141:ASP:C	2.55	0.44
1:A:296:HIS:NE2	1:A:303:LYS:HD2	2.32	0.43
1:A:347:ARG:NH1	3:A:544:HOH:O	2.49	0.43
1:B:6:ARG:HD2	3:B:575:HOH:O	2.18	0.43
1:A:353:ASN:O	1:A:357:PRO:HD2	2.19	0.43
1:B:178:PHE:CE2	1:B:210:PHE:CE2	3.07	0.43
1:B:251:LEU:HD21	1:B:317:ILE:HD11	2.01	0.43
1:A:35:MET:SD	1:A:63:ALA:HB2	2.58	0.43
1:A:306:ILE:HA	1:A:317:ILE:HG22	2.01	0.43
1:B:269:TYR:CE1	1:B:307:VAL:HG22	2.53	0.42
1:B:282:ILE:HG21	1:B:331:LEU:HD21	2.00	0.42
1:A:229:PRO:HB2	1:A:233:ILE:HD11	2.02	0.42
1:B:34:ILE:HB	1:B:59:ALA:HA	2.02	0.42
1:B:111:LEU:HD11	1:B:148:ILE:HG23	2.01	0.42
1:A:198:LEU:HA	1:A:216:ASN:ND2	2.28	0.41
1:B:288:TRP:CE2	1:B:331:LEU:HD23	2.55	0.41

*Continued on next page...*

Continued from previous page...

Atom-1	Atom-2	Interatomic distance (Å)	Clash overlap (Å)
1:B:228:ALA:HA	1:B:229:PRO:HD3	1.95	0.41
1:A:39:LYS:NZ	2:A:800:DCS:H4A1	2.35	0.41
1:B:142:GLU:HA	1:B:191:TRP:CE3	2.55	0.41
1:B:161:GLU:O	1:B:197:PRO:HG2	2.20	0.41
1:A:98:GLN:HE21	1:A:98:GLN:HB2	1.52	0.41
1:A:147:ARG:HG3	1:A:147:ARG:NH1	2.36	0.41
1:B:189:LEU:HB3	1:B:195:ARG:HH12	1.84	0.41
1:A:164:TYR:HB3	1:A:200:HIS:CE1	2.56	0.41
1:B:112:GLU:HG3	1:B:151:LEU:HD11	2.03	0.41
1:B:163:LEU:HD11	1:B:189:LEU:HD23	2.02	0.40
1:A:222:ILE:N	2:A:800:DCS:O1P	2.41	0.40
1:B:200:HIS:CD2	1:B:200:HIS:N	2.89	0.40
1:A:142:GLU:HG3	1:A:191:TRP:CG	2.57	0.40
1:A:344:ASP:OD1	1:A:347:ARG:NH2	2.55	0.40
1:B:23:ASN:HD22	1:B:23:ASN:HA	1.70	0.40
1:B:379:ASN:C	1:B:379:ASN:HD22	2.25	0.40
1:B:184:ARG:NH2	3:B:678:HOH:O	2.53	0.40

There are no symmetry-related clashes.

## 5.3 Torsion angles [i](#)

### 5.3.1 Protein backbone [i](#)

In the following table, the Percentiles column shows the percent Ramachandran outliers of the chain as a percentile score with respect to all X-ray entries followed by that with respect to entries of similar resolution.

The Analysed column shows the number of residues for which the backbone conformation was analysed, and the total number of residues.

Mol	Chain	Analysed	Favoured	Allowed	Outliers	Percentiles	
1	A	378/388 (97%)	364 (96%)	14 (4%)	0	100	100
1	B	376/388 (97%)	362 (96%)	14 (4%)	0	100	100
All	All	754/776 (97%)	726 (96%)	28 (4%)	0	100	100

There are no Ramachandran outliers to report.

### 5.3.2 Protein sidechains [i](#)

In the following table, the Percentiles column shows the percent sidechain outliers of the chain as a percentile score with respect to all X-ray entries followed by that with respect to entries of similar resolution.

The Analysed column shows the number of residues for which the sidechain conformation was analysed, and the total number of residues.

Mol	Chain	Analysed	Rotameric	Outliers	Percentiles	
1	A	317/322 (98%)	294 (93%)	23 (7%)	14	15
1	B	317/322 (98%)	290 (92%)	27 (8%)	10	10
All	All	634/644 (98%)	584 (92%)	50 (8%)	12	12

All (50) residues with a non-rotameric sidechain are listed below:

Mol	Chain	Res	Type
1	A	3	ASP
1	A	37	VAL
1	A	39	LYS
1	A	64	VAL
1	A	98	GLN
1	A	107	ARG
1	A	141	ASP
1	A	172	GLU
1	A	184	ARG
1	A	195	ARG
1	A	212	ASP
1	A	236	LEU
1	A	264	SER
1	A	272	GLN
1	A	273	THR
1	A	299	VAL
1	A	307	VAL
1	A	310	ILE
1	A	318	ARG
1	A	331	LEU
1	A	335	GLN
1	A	348	HIS
1	A	351	THR
1	B	2	ASN
1	B	6	ARG
1	B	27	LEU
1	B	31	ASP

*Continued on next page...*

*Continued from previous page...*

<b>Mol</b>	<b>Chain</b>	<b>Res</b>	<b>Type</b>
1	B	38	VAL
1	B	48	VAL
1	B	64	VAL
1	B	95	LEU
1	B	134	MET
1	B	139	VAL
1	B	147	ARG
1	B	153	GLU
1	B	163	LEU
1	B	184	ARG
1	B	195	ARG
1	B	212	ASP
1	B	216	ASN
1	B	231	PRO
1	B	237	LEU
1	B	272	GLN
1	B	273	THR
1	B	302	GLN
1	B	307	VAL
1	B	335	GLN
1	B	337	ASP
1	B	351	THR
1	B	379	ASN

Sometimes sidechains can be flipped to improve hydrogen bonding and reduce clashes. All (14) such sidechains are listed below:

<b>Mol</b>	<b>Chain</b>	<b>Res</b>	<b>Type</b>
1	A	98	GLN
1	A	216	ASN
1	A	253	HIS
1	A	272	GLN
1	A	293	GLN
1	A	314	GLN
1	B	2	ASN
1	B	5	HIS
1	B	23	ASN
1	B	33	HIS
1	B	216	ASN
1	B	258	GLN
1	B	302	GLN
1	B	379	ASN

### 5.3.3 RNA [i](#)

There are no RNA molecules in this entry.

## 5.4 Non-standard residues in protein, DNA, RNA chains [i](#)

2 non-standard protein/DNA/RNA residues are modelled in this entry.

In the following table, the Counts columns list the number of bonds (or angles) for which Mogul statistics could be retrieved, the number of bonds (or angles) that are observed in the model and the number of bonds (or angles) that are defined in the Chemical Component Dictionary. The Link column lists molecule types, if any, to which the group is linked. The Z score for a bond length (or angle) is the number of standard deviations the observed value is removed from the expected value. A bond length (or angle) with  $|Z| > 2$  is considered an outlier worth inspection. RMSZ is the root-mean-square of all Z scores of the bond lengths (or angles).

Mol	Type	Chain	Res	Link	Bond lengths			Bond angles		
					Counts	RMSZ	# Z  > 2	Counts	RMSZ	# Z  > 2
1	KCX	B	129	1	9,11,12	1.49	2 (22%)	5,12,14	2.42	1 (20%)
1	KCX	A	129	1	9,11,12	1.53	2 (22%)	5,12,14	1.79	2 (40%)

In the following table, the Chirals column lists the number of chiral outliers, the number of chiral centers analysed, the number of these observed in the model and the number defined in the Chemical Component Dictionary. Similar counts are reported in the Torsion and Rings columns. '-' means no outliers of that kind were identified.

Mol	Type	Chain	Res	Link	Chirals	Torsions	Rings
1	KCX	B	129	1	-	2/9/10/12	-
1	KCX	A	129	1	-	2/9/10/12	-

All (4) bond length outliers are listed below:

Mol	Chain	Res	Type	Atoms	Z	Observed(Å)	Ideal(Å)
1	B	129	KCX	OQ1-CX	2.66	1.26	1.21
1	A	129	KCX	OQ1-CX	2.53	1.26	1.21
1	A	129	KCX	O-C	2.53	1.30	1.19
1	B	129	KCX	O-C	2.25	1.28	1.19

All (3) bond angle outliers are listed below:

Mol	Chain	Res	Type	Atoms	Z	Observed(°)	Ideal(°)
1	B	129	KCX	OQ1-CX-NZ	-4.82	117.48	124.96
1	A	129	KCX	CE-NZ-CX	2.34	125.64	121.89

*Continued on next page...*

Continued from previous page...

Mol	Chain	Res	Type	Atoms	Z	Observed(°)	Ideal(°)
1	A	129	KCX	CD-CE-NZ	2.15	118.36	112.21

There are no chirality outliers.

All (4) torsion outliers are listed below:

Mol	Chain	Res	Type	Atoms
1	B	129	KCX	CA-CB-CG-CD
1	A	129	KCX	CE-CD-CG-CB
1	A	129	KCX	CG-CD-CE-NZ
1	B	129	KCX	CE-CD-CG-CB

There are no ring outliers.

2 monomers are involved in 10 short contacts:

Mol	Chain	Res	Type	Clashes	Symm-Clashes
1	B	129	KCX	7	0
1	A	129	KCX	3	0

## 5.5 Carbohydrates [i](#)

There are no monosaccharides in this entry.

## 5.6 Ligand geometry [i](#)

2 ligands are modelled in this entry.

In the following table, the Counts columns list the number of bonds (or angles) for which Mogul statistics could be retrieved, the number of bonds (or angles) that are observed in the model and the number of bonds (or angles) that are defined in the Chemical Component Dictionary. The Link column lists molecule types, if any, to which the group is linked. The Z score for a bond length (or angle) is the number of standard deviations the observed value is removed from the expected value. A bond length (or angle) with  $|Z| > 2$  is considered an outlier worth inspection. RMSZ is the root-mean-square of all Z scores of the bond lengths (or angles).

Mol	Type	Chain	Res	Link	Bond lengths			Bond angles		
					Counts	RMSZ	$\# Z  > 2$	Counts	RMSZ	$\# Z  > 2$
2	DCS	A	800	-	22,23,23	5.36	12 (54%)	25,33,33	1.55	7 (28%)
2	DCS	B	900	-	22,23,23	5.01	12 (54%)	25,33,33	1.55	4 (16%)

In the following table, the Chirals column lists the number of chiral outliers, the number of chiral



centers analysed, the number of these observed in the model and the number defined in the Chemical Component Dictionary. Similar counts are reported in the Torsion and Rings columns. '2' means no outliers of that kind were identified.

Mol	Type	Chain	Res	Link	Chirals	Torsions	Rings
2	DCS	A	800	-	1/1/3/5	3/10/21/21	0/2/2/2
2	DCS	B	900	-	1/1/3/5	3/10/21/21	0/2/2/2

All (24) bond length outliers are listed below:

Mol	Chain	Res	Type	Atoms	Z	Observed(Å)	Ideal(Å)
2	A	800	DCS	CA-C	-17.71	1.39	1.52
2	B	900	DCS	CA-C	-15.42	1.41	1.52
2	B	900	DCS	P-O1P	8.03	1.76	1.50
2	A	800	DCS	P-O1P	7.88	1.76	1.50
2	B	900	DCS	P-O2P	7.15	1.82	1.54
2	A	800	DCS	P-O2P	6.85	1.81	1.54
2	B	900	DCS	O-C	6.70	1.36	1.23
2	A	800	DCS	CB-CA	-6.70	1.39	1.54
2	B	900	DCS	CB-CA	-6.45	1.39	1.54
2	A	800	DCS	P-O3P	6.24	1.78	1.54
2	B	900	DCS	P-O3P	6.12	1.78	1.54
2	A	800	DCS	C-ND	-5.85	1.27	1.34
2	A	800	DCS	O-C	5.24	1.33	1.23
2	B	900	DCS	C-ND	-4.38	1.29	1.34
2	A	800	DCS	C5-C4	4.26	1.46	1.40
2	B	900	DCS	C5-C4	4.21	1.46	1.40
2	A	800	DCS	OG-CB	-3.48	1.37	1.44
2	B	900	DCS	OG-CB	-3.43	1.37	1.44
2	B	900	DCS	CA-N	-3.36	1.38	1.46
2	A	800	DCS	CA-N	-3.21	1.39	1.46
2	A	800	DCS	C4A-C4	-2.90	1.48	1.51
2	A	800	DCS	C3-C2	-2.26	1.38	1.40
2	B	900	DCS	C2A-C2	2.24	1.54	1.50
2	B	900	DCS	C6-C5	2.08	1.42	1.37

All (11) bond angle outliers are listed below:

Mol	Chain	Res	Type	Atoms	Z	Observed(°)	Ideal(°)
2	B	900	DCS	C4A-N-CA	4.29	122.05	113.92
2	A	800	DCS	C4A-N-CA	3.67	120.87	113.92
2	B	900	DCS	C6-C5-C4	-2.90	116.06	118.12
2	B	900	DCS	CB-OG-ND	2.53	109.57	105.72
2	A	800	DCS	O4P-C5A-C5	2.51	114.14	109.35

*Continued on next page...*

Continued from previous page...

Mol	Chain	Res	Type	Atoms	Z	Observed(°)	Ideal(°)
2	A	800	DCS	C6-C5-C4	-2.35	116.46	118.12
2	A	800	DCS	C6-N1-C2	2.32	123.47	119.17
2	A	800	DCS	CB-OG-ND	2.24	109.13	105.72
2	B	900	DCS	C6-N1-C2	2.13	123.12	119.17
2	A	800	DCS	O-C-CA	-2.05	124.70	126.18
2	A	800	DCS	C5-C6-N1	-2.04	120.42	123.82

All (2) chirality outliers are listed below:

Mol	Chain	Res	Type	Atom
2	A	800	DCS	CA
2	B	900	DCS	CA

All (6) torsion outliers are listed below:

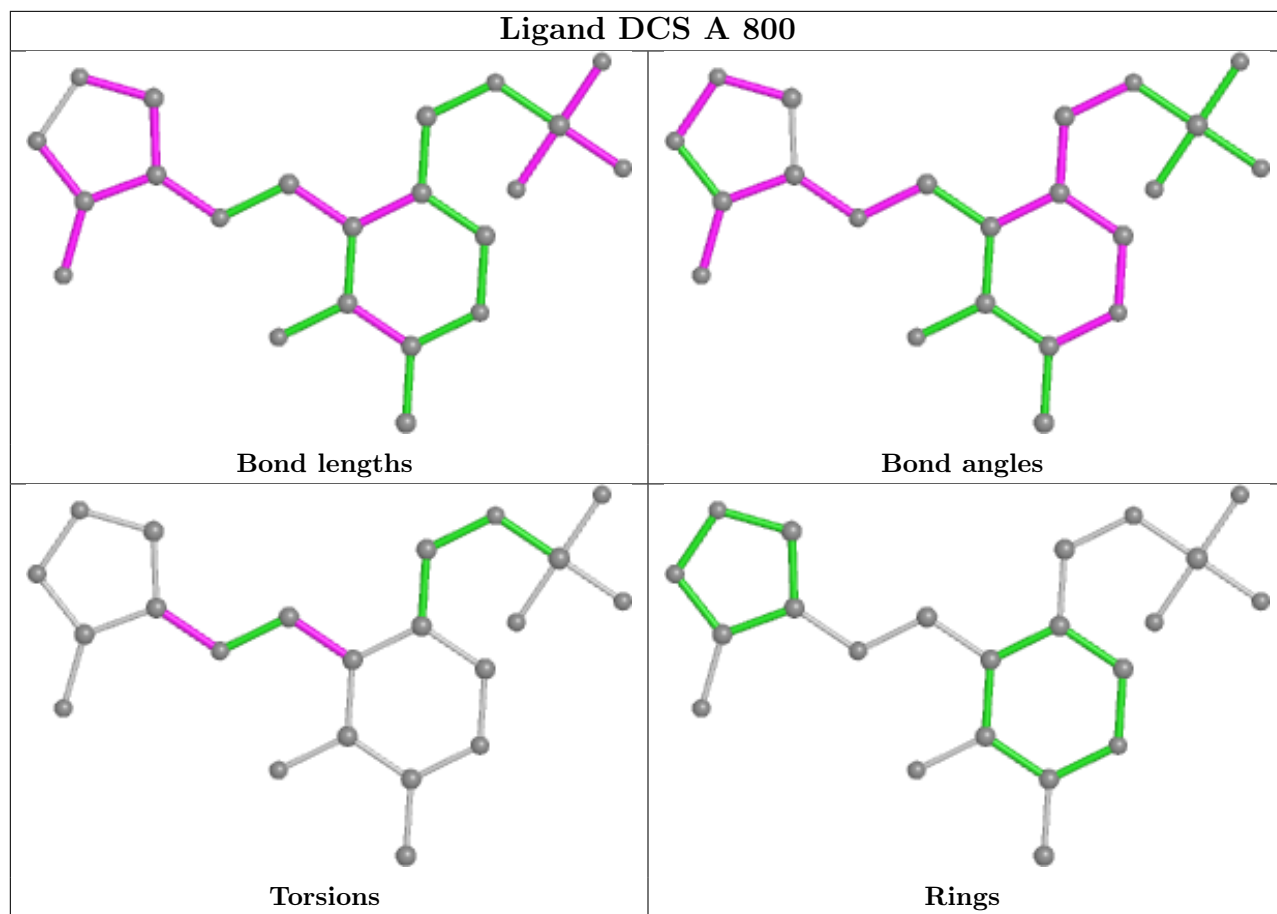
Mol	Chain	Res	Type	Atoms
2	A	800	DCS	C3-C4-C4A-N
2	A	800	DCS	C5-C4-C4A-N
2	A	800	DCS	CB-CA-N-C4A
2	B	900	DCS	CB-CA-N-C4A
2	B	900	DCS	C5-C4-C4A-N
2	B	900	DCS	C3-C4-C4A-N

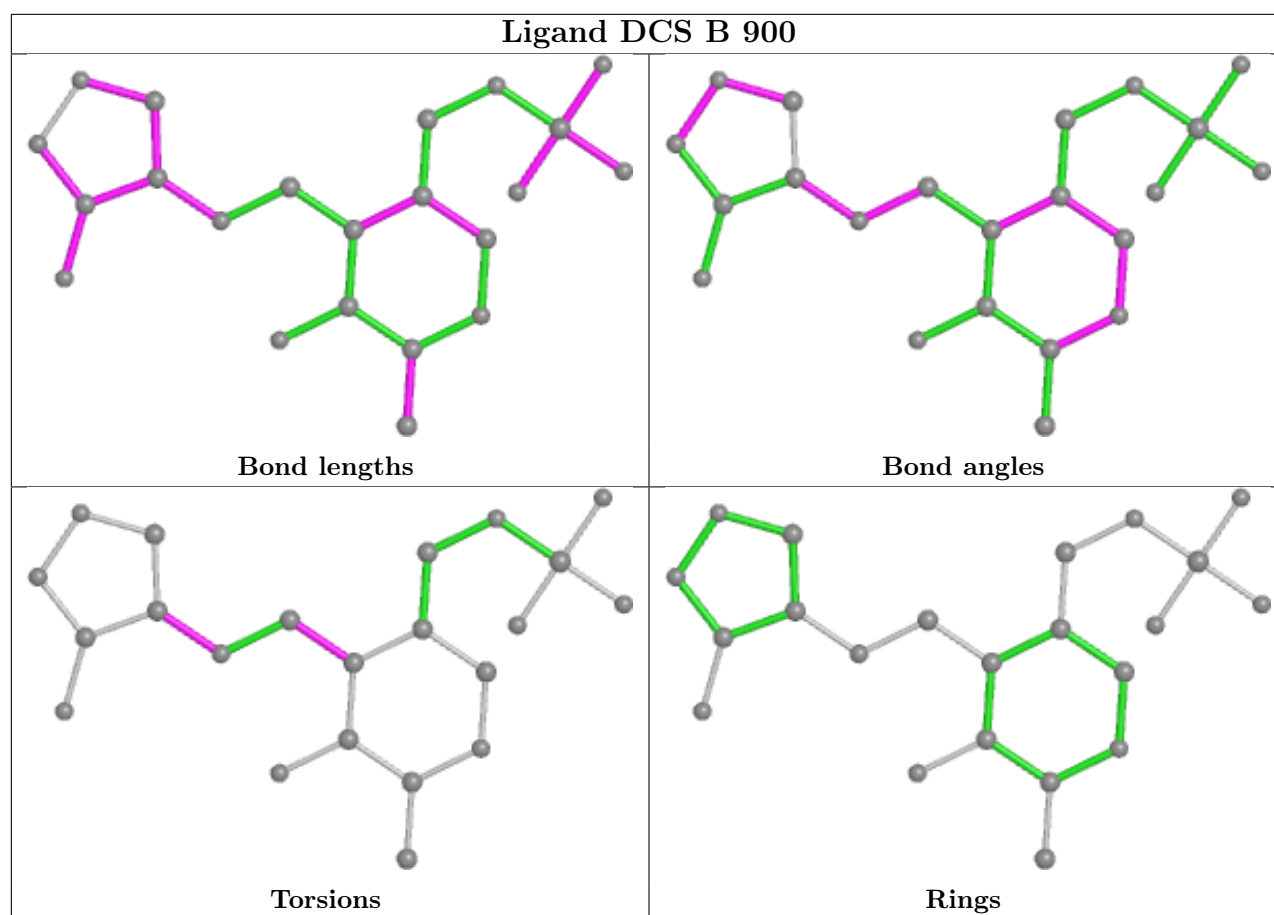
There are no ring outliers.

2 monomers are involved in 13 short contacts:

Mol	Chain	Res	Type	Clashes	Symm-Clashes
2	A	800	DCS	7	0
2	B	900	DCS	6	0

The following is a two-dimensional graphical depiction of Mogul quality analysis of bond lengths, bond angles, torsion angles, and ring geometry for all instances of the Ligand of Interest. In addition, ligands with molecular weight > 250 and outliers as shown on the validation Tables will also be included. For torsion angles, if less than 5% of the Mogul distribution of torsion angles is within 10 degrees of the torsion angle in question, then that torsion angle is considered an outlier. Any bond that is central to one or more torsion angles identified as an outlier by Mogul will be highlighted in the graph. For rings, the root-mean-square deviation (RMSD) between the ring in question and similar rings identified by Mogul is calculated over all ring torsion angles. If the average RMSD is greater than 60 degrees and the minimal RMSD between the ring in question and any Mogul-identified rings is also greater than 60 degrees, then that ring is considered an outlier. The outliers are highlighted in purple. The color gray indicates Mogul did not find sufficient equivalents in the CSD to analyse the geometry.





## 5.7 Other polymers [i](#)

There are no such residues in this entry.

## 5.8 Polymer linkage issues [i](#)

The following chains have linkage breaks:

Mol	Chain	Number of breaks
1	A	1
1	B	1

All chain breaks are listed below:

Model	Chain	Residue-1	Atom-1	Residue-2	Atom-2	Distance (Å)
1	A	129:KCX	C	130:MET	N	2.55
1	B	129:KCX	C	130:MET	N	2.31

## 6 Fit of model and data [i](#)

### 6.1 Protein, DNA and RNA chains [i](#)

In the following table, the column labelled ‘#RSRZ > 2’ contains the number (and percentage) of RSRZ outliers, followed by percent RSRZ outliers for the chain as percentile scores relative to all X-ray entries and entries of similar resolution. The OWAB column contains the minimum, median, 95<sup>th</sup> percentile and maximum values of the occupancy-weighted average B-factor per residue. The column labelled ‘Q < 0.9’ lists the number of (and percentage) of residues with an average occupancy less than 0.9.

Mol	Chain	Analysed	<RSRZ>	#RSRZ>2	OWAB(Å <sup>2</sup> )	Q<0.9
1	A	381/388 (98%)	-0.49	2 (0%) 91 90	11, 23, 45, 53	0
1	B	379/388 (97%)	-0.43	4 (1%) 80 79	13, 24, 45, 57	0
All	All	760/776 (97%)	-0.46	6 (0%) 86 85	11, 24, 45, 57	0

All (6) RSRZ outliers are listed below:

Mol	Chain	Res	Type	RSRZ
1	B	2	ASN	3.9
1	A	259	PRO	2.4
1	B	213	ARG	2.3
1	B	143	GLU	2.2
1	B	154	ARG	2.1
1	A	30	ASP	2.1

### 6.2 Non-standard residues in protein, DNA, RNA chains [i](#)

In the following table, the Atoms column lists the number of modelled atoms in the group and the number defined in the chemical component dictionary. The B-factors column lists the minimum, median, 95<sup>th</sup> percentile and maximum values of B factors of atoms in the group. The column labelled ‘Q < 0.9’ lists the number of atoms with occupancy less than 0.9.

Mol	Type	Chain	Res	Atoms	RSCC	RSR	B-factors(Å <sup>2</sup> )	Q<0.9
1	KCX	B	129	12/13	0.81	0.28	20,26,53,58	0
1	KCX	A	129	12/13	0.90	0.20	19,22,27,27	0

### 6.3 Carbohydrates [i](#)

There are no monosaccharides in this entry.

## 6.4 Ligands

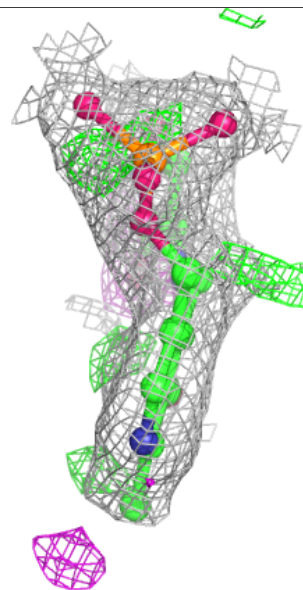
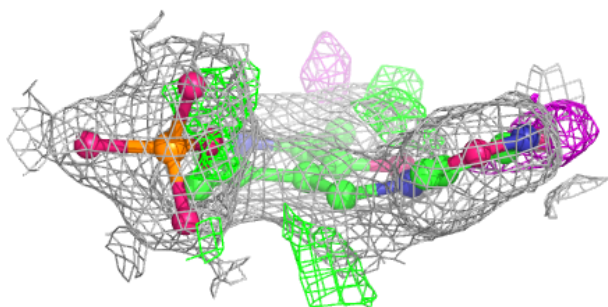
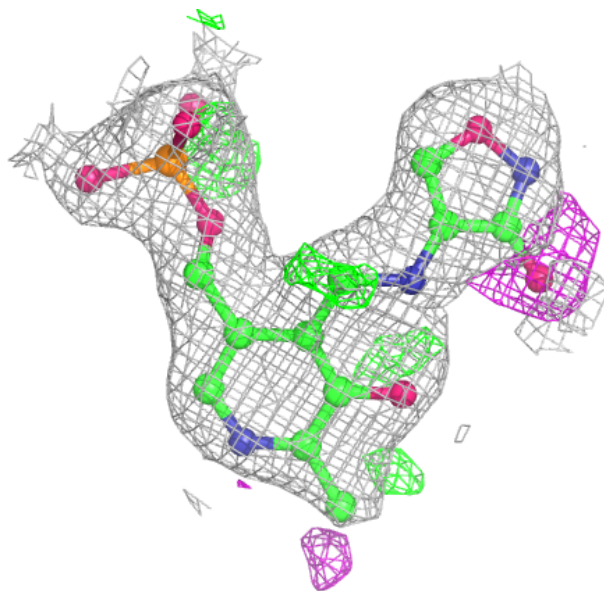
In the following table, the Atoms column lists the number of modelled atoms in the group and the number defined in the chemical component dictionary. The B-factors column lists the minimum, median, 95<sup>th</sup> percentile and maximum values of B factors of atoms in the group. The column labelled 'Q< 0.9' lists the number of atoms with occupancy less than 0.9.

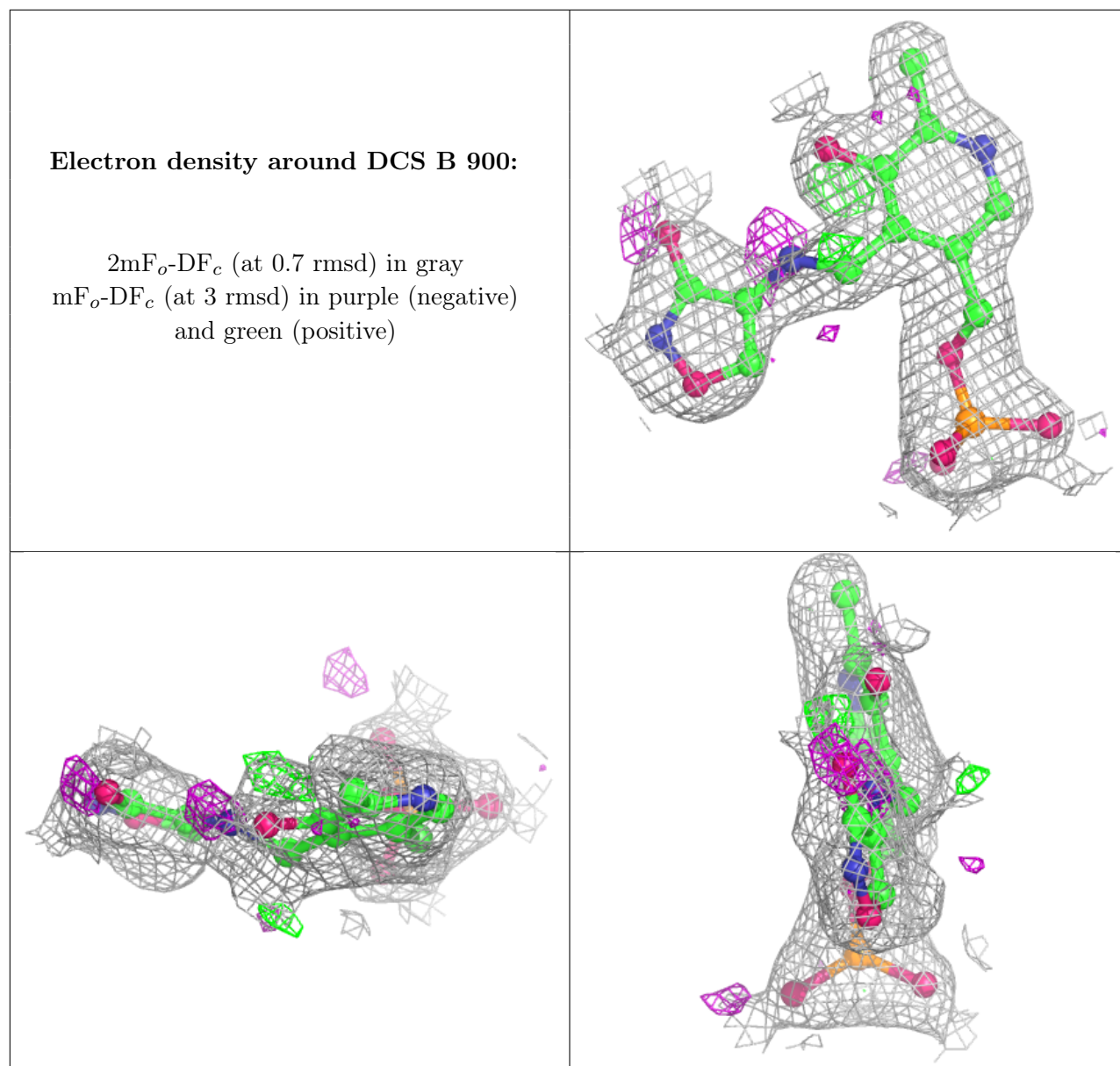
Mol	Type	Chain	Res	Atoms	RSCC	RSR	B-factors(Å <sup>2</sup> )	Q<0.9
2	DCS	A	800	22/22	0.93	0.19	13,21,30,43	0
2	DCS	B	900	22/22	0.94	0.19	18,26,33,37	0

The following is a graphical depiction of the model fit to experimental electron density of all instances of the Ligand of Interest. In addition, ligands with molecular weight > 250 and outliers as shown on the geometry validation Tables will also be included. Each fit is shown from different orientation to approximate a three-dimensional view.

**Electron density around DCS A 800:**

$2mF_o-DF_c$  (at 0.7 rmsd) in gray  
 $mF_o-DF_c$  (at 3 rmsd) in purple (negative)  
and green (positive)





## 6.5 Other polymers [i](#)

There are no such residues in this entry.