



# Full wwPDB X-ray Structure Validation Report ⓘ

Oct 17, 2021 – 06:55 AM EDT

PDB ID : 1HRK  
Title : CRYSTAL STRUCTURE OF HUMAN FERROCHELATASE  
Authors : Wu, C.K.; Dailey, H.A.; Rose, J.P.; Burden, A.; Sellers, V.M.; Wang, B.-C.  
Deposited on : 2000-12-21  
Resolution : 2.00 Å(reported)

This is a Full wwPDB X-ray Structure Validation Report for a publicly released PDB entry.

We welcome your comments at [validation@mail.wwpdb.org](mailto:validation@mail.wwpdb.org)

A user guide is available at

<https://www.wwpdb.org/validation/2017/XrayValidationReportHelp>

with specific help available everywhere you see the ⓘ symbol.

---

The following versions of software and data (see [references ⓘ](#)) were used in the production of this report:

MolProbity : 4.02b-467  
Mogul : 1.8.5 (274361), CSD as541be (2020)  
Xtriage (Phenix) : 1.13  
EDS : 2.23.2  
buster-report : 1.1.7 (2018)  
Percentile statistics : 20191225.v01 (using entries in the PDB archive December 25th 2019)  
Refmac : 5.8.0158  
CCP4 : 7.0.044 (Gargrove)  
Ideal geometry (proteins) : Engh & Huber (2001)  
Ideal geometry (DNA, RNA) : Parkinson et al. (1996)  
Validation Pipeline (wwPDB-VP) : 2.23.2

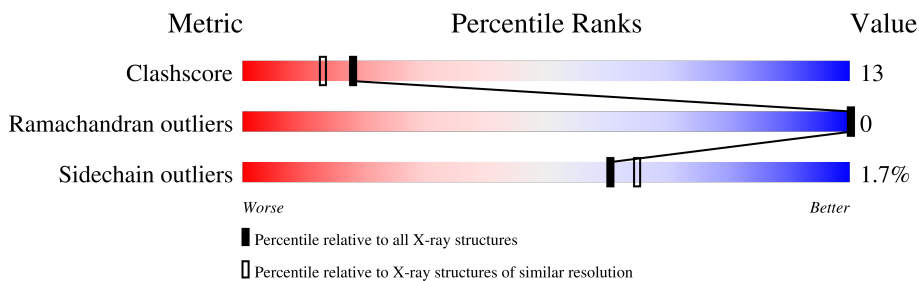
# 1 Overall quality at a glance

The following experimental techniques were used to determine the structure:

*X-RAY DIFFRACTION*

The reported resolution of this entry is 2.00 Å.

Percentile scores (ranging between 0-100) for global validation metrics of the entry are shown in the following graphic. The table shows the number of entries on which the scores are based.



Metric	Whole archive (#Entries)	Similar resolution (#Entries, resolution range(Å))
Clashscore	141614	9178 (2.00-2.00)
Ramachandran outliers	138981	9054 (2.00-2.00)
Sidechain outliers	138945	9053 (2.00-2.00)

The table below summarises the geometric issues observed across the polymeric chains and their fit to the electron density. The red, orange, yellow and green segments of the lower bar indicate the fraction of residues that contain outliers for  $\geq 3$ , 2, 1 and 0 types of geometric quality criteria respectively. A grey segment represents the fraction of residues that are not modelled. The numeric value for each fraction is indicated below the corresponding segment, with a dot representing fractions  $\leq 5\%$ .

Mol	Chain	Length	Quality of chain
1	A	359	 75% 24% .
1	B	359	 76% 23% .

## 2 Entry composition [i](#)

There are 4 unique types of molecules in this entry. The entry contains 6486 atoms, of which 0 are hydrogens and 0 are deuteriums.

In the tables below, the ZeroOcc column contains the number of atoms modelled with zero occupancy, the AltConf column contains the number of residues with at least one atom in alternate conformation and the Trace column contains the number of residues modelled with at most 2 atoms.

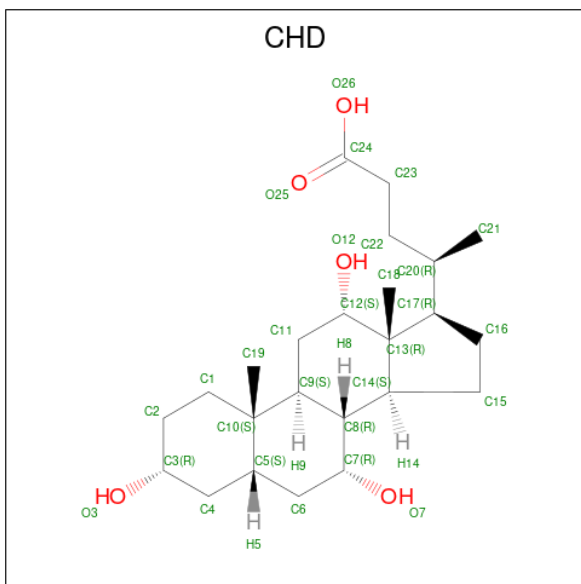
- Molecule 1 is a protein called FERROCHELATASE.

Mol	Chain	Residues	Atoms					ZeroOcc	AltConf	Trace
			Total	C	N	O	S			
1	A	359	Total 2854	C 1819	N 491	O 526	S 18	0	0	0
1	B	359	Total 2854	C 1819	N 491	O 526	S 18	0	0	0

There are 4 discrepancies between the modelled and reference sequences:

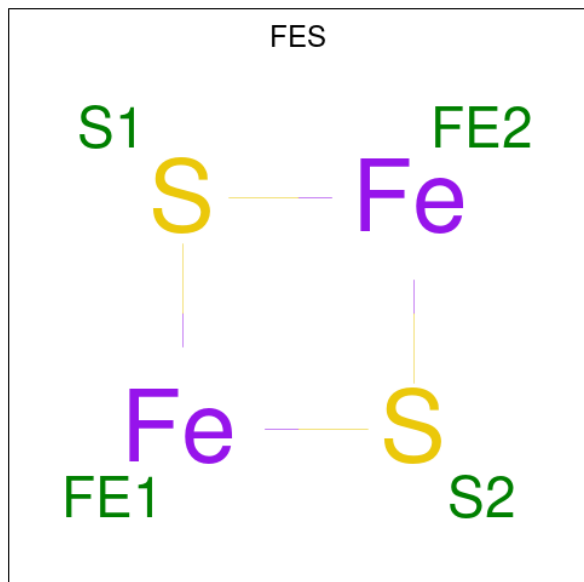
Chain	Residue	Modelled	Actual	Comment	Reference
A	96	ARG	GLN	engineered mutation	UNP P22830
A	115	LEU	ARG	engineered mutation	UNP P22830
B	96	ARG	GLN	engineered mutation	UNP P22830
B	115	LEU	ARG	engineered mutation	UNP P22830

- Molecule 2 is CHOLIC ACID (three-letter code: CHD) (formula:  $C_{24}H_{40}O_5$ ).



Mol	Chain	Residues	Atoms			ZeroOcc	AltConf
2	A	1	Total	C	O	0	0
			29	24	5		
2	A	1	Total	C	O	0	0
			29	24	5		
2	A	1	Total	C	O	0	0
			29	24	5		
2	B	1	Total	C	O	0	0
			29	24	5		
2	B	1	Total	C	O	0	0
			29	24	5		
2	B	1	Total	C	O	0	0
			29	24	5		

- Molecule 3 is FE2/S2 (INORGANIC) CLUSTER (three-letter code: FES) (formula: Fe<sub>2</sub>S<sub>2</sub>).



Mol	Chain	Residues	Atoms			ZeroOcc	AltConf
3	A	1	Total	Fe	S	0	0
			4	2	2		
3	B	1	Total	Fe	S	0	0
			4	2	2		

- Molecule 4 is water.

Mol	Chain	Residues	Atoms		ZeroOcc	AltConf
4	A	291	Total	O	0	0
			291	291		
4	B	305	Total	O	0	0
			305	305		

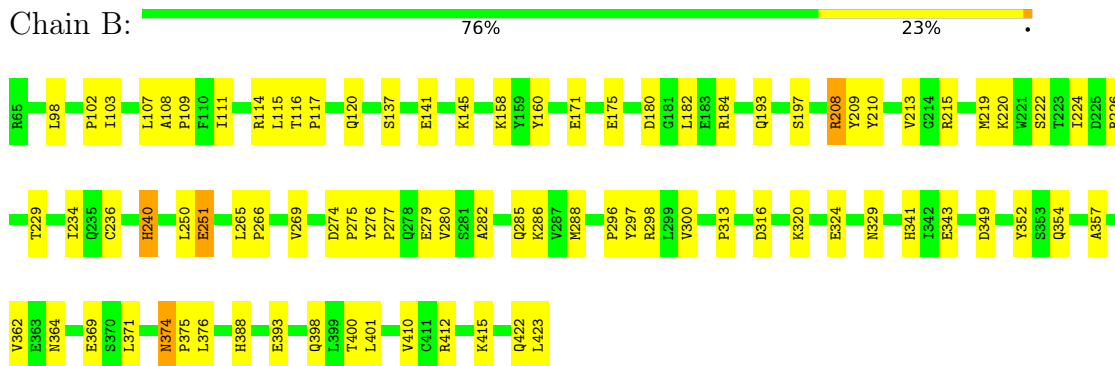
### 3 Residue-property plots

These plots are drawn for all protein, RNA, DNA and oligosaccharide chains in the entry. The first graphic for a chain summarises the proportions of the various outlier classes displayed in the second graphic. The second graphic shows the sequence view annotated by issues in geometry. Residues are color-coded according to the number of geometric quality criteria for which they contain at least one outlier: green = 0, yellow = 1, orange = 2 and red = 3 or more. Stretches of 2 or more consecutive residues without any outlier are shown as a green connector. Residues present in the sample, but not in the model, are shown in grey.

- Molecule 1: FERROCHELATASE



- Molecule 1: FERROCHELATASE



## 4 Data and refinement statistics

Property	Value	Source
Space group	P 21 21 21	Depositor
Cell constants a, b, c, $\alpha$ , $\beta$ , $\gamma$	93.43Å 87.57Å 109.70Å 90.00° 90.00° 90.00°	Depositor
Resolution (Å)	19.87 – 2.00 19.87 – 1.83	Depositor EDS
% Data completeness (in resolution range)	98.4 (19.87-2.00) 94.6 (19.87-1.83)	Depositor EDS
$R_{merge}$	0.06	Depositor
$R_{sym}$	(Not available)	Depositor
$\langle I/\sigma(I) \rangle$ <sup>1</sup>	4.14 (at 1.84Å)	Xtrriage
Refinement program	CNS 0.9	Depositor
R, $R_{free}$	0.202 , 0.226 0.306 , (Not available)	Depositor DCC
$R_{free}$ test set	No test flags present.	wwPDB-VP
Wilson B-factor (Å <sup>2</sup> )	13.6	Xtrriage
Anisotropy	0.286	Xtrriage
Bulk solvent $k_{sol}$ (e/Å <sup>3</sup> ), $B_{sol}$ (Å <sup>2</sup> )	0.47 , 73.0	EDS
L-test for twinning <sup>2</sup>	$\langle  L  \rangle = 0.48$ , $\langle L^2 \rangle = 0.31$	Xtrriage
Estimated twinning fraction	No twinning to report.	Xtrriage
$F_o, F_c$ correlation	0.78	EDS
Total number of atoms	6486	wwPDB-VP
Average B, all atoms (Å <sup>2</sup> )	19.0	wwPDB-VP

Xtrriage's analysis on translational NCS is as follows: *The analyses of the Patterson function reveals a significant off-origin peak that is 43.66 % of the origin peak, indicating pseudo-translational symmetry. The chance of finding a peak of this or larger height randomly in a structure without pseudo-translational symmetry is equal to 1.7074e-04. The detected translational NCS is most likely also responsible for the elevated intensity ratio.*

<sup>1</sup>Intensities estimated from amplitudes.

<sup>2</sup>Theoretical values of  $\langle |L| \rangle$ ,  $\langle L^2 \rangle$  for acentric reflections are 0.5, 0.333 respectively for untwinned datasets, and 0.375, 0.2 for perfectly twinned datasets.

## 5 Model quality [i](#)

### 5.1 Standard geometry [i](#)

Bond lengths and bond angles in the following residue types are not validated in this section: FES, CHD

The Z score for a bond length (or angle) is the number of standard deviations the observed value is removed from the expected value. A bond length (or angle) with  $|Z| > 5$  is considered an outlier worth inspection. RMSZ is the root-mean-square of all Z scores of the bond lengths (or angles).

Mol	Chain	Bond lengths		Bond angles	
		RMSZ	# Z  >5	RMSZ	# Z  >5
1	A	0.31	0/2924	0.58	1/3971 (0.0%)
1	B	0.31	0/2924	0.58	1/3971 (0.0%)
All	All	0.31	0/5848	0.58	2/7942 (0.0%)

There are no bond length outliers.

All (2) bond angle outliers are listed below:

Mol	Chain	Res	Type	Atoms	Z	Observed(°)	Ideal(°)
1	B	224	ILE	N-CA-C	-5.73	95.52	111.00
1	A	224	ILE	N-CA-C	-5.53	96.07	111.00

There are no chirality outliers.

There are no planarity outliers.

### 5.2 Too-close contacts [i](#)

In the following table, the Non-H and H(model) columns list the number of non-hydrogen atoms and hydrogen atoms in the chain respectively. The H(added) column lists the number of hydrogen atoms added and optimized by MolProbity. The Clashes column lists the number of clashes within the asymmetric unit, whereas Symm-Clashes lists symmetry-related clashes.

Mol	Chain	Non-H	H(model)	H(added)	Clashes	Symm-Clashes
1	A	2854	0	2821	78	0
1	B	2854	0	2821	79	0
2	A	87	0	117	12	0
2	B	87	0	117	12	0
3	A	4	0	0	0	0
3	B	4	0	0	0	0
4	A	291	0	0	9	0

*Continued on next page...*

*Continued from previous page...*

Mol	Chain	Non-H	H(model)	H(added)	Clashes	Symm-Clashes
4	B	305	0	0	6	0
All	All	6486	0	5876	158	0

The all-atom clashscore is defined as the number of clashes found per 1000 atoms (including hydrogen atoms). The all-atom clashscore for this structure is 13.

All (158) close contacts within the same asymmetric unit are listed below, sorted by their clash magnitude.

Atom-1	Atom-2	Interatomic distance (Å)	Clash overlap (Å)
1:A:297:TYR:H	1:B:398:GLN:HE22	1.13	0.96
1:A:208:ARG:NH2	1:A:410:VAL:HG21	1.81	0.96
1:A:398:GLN:HE22	1:B:297:TYR:H	1.15	0.93
1:B:250:LEU:HD12	1:B:250:LEU:H	1.34	0.91
1:B:208:ARG:NH2	1:B:410:VAL:HG21	1.88	0.87
1:A:250:LEU:HD12	1:A:250:LEU:H	1.40	0.85
1:A:422:GLN:O	1:A:423:LEU:HB2	1.79	0.82
1:B:422:GLN:O	1:B:423:LEU:HB2	1.79	0.81
1:A:229:THR:HB	1:A:286:LYS:HE2	1.62	0.80
1:A:300:VAL:HG12	1:A:313:PRO:HG2	1.65	0.78
1:B:300:VAL:HG12	1:B:313:PRO:HG2	1.67	0.74
1:A:269:VAL:O	1:A:272:ARG:HG2	1.87	0.74
2:B:2501:CHD:H12	2:B:2501:CHD:H212	1.70	0.74
1:A:234:ILE:HG13	1:A:286:LYS:HE3	1.69	0.74
1:B:208:ARG:HH21	1:B:410:VAL:HG21	1.49	0.74
1:B:171:GLU:O	1:B:175:GLU:HG3	1.88	0.73
1:B:98:LEU:HD11	2:B:2501:CHD:H162	1.70	0.73
1:B:229:THR:HB	1:B:286:LYS:HE2	1.70	0.73
1:B:234:ILE:HG13	1:B:286:LYS:HE3	1.70	0.72
1:B:265:LEU:HD22	2:B:2501:CHD:O26	1.91	0.71
1:B:250:LEU:H	1:B:250:LEU:CD1	2.05	0.70
1:A:222:SER:OG	1:A:388:HIS:HE1	1.75	0.70
1:A:276:TYR:HB3	1:A:277:PRO:HD3	1.73	0.69
1:A:197:SER:HB3	2:A:1501:CHD:O25	1.92	0.69
2:A:1501:CHD:H212	2:A:1501:CHD:H12	1.75	0.68
1:B:222:SER:OG	1:B:388:HIS:HE1	1.76	0.68
1:A:265:LEU:HD22	2:A:1501:CHD:O26	1.93	0.68
1:B:357:ALA:HB1	1:B:362:VAL:HG11	1.74	0.67
1:B:276:TYR:HB3	1:B:277:PRO:HD3	1.77	0.67
1:B:298:ARG:HD3	4:B:3003:HOH:O	1.94	0.66
1:B:250:LEU:HD12	1:B:250:LEU:N	2.09	0.65
1:A:115:LEU:HD21	2:A:1502:CHD:H231	1.78	0.65

*Continued on next page...*



*Continued from previous page...*

Atom-1	Atom-2	Interatomic distance (Å)	Clash overlap (Å)
1:B:220:LYS:HD3	1:B:423:LEU:HG	1.79	0.63
1:B:210:TYR:HA	1:B:213:VAL:HG12	1.79	0.63
1:B:374:ASN:HD22	1:B:375:PRO:N	1.97	0.63
1:A:220:LYS:HD2	1:A:423:LEU:HG	1.80	0.62
1:A:297:TYR:N	1:B:398:GLN:HE22	1.90	0.62
1:B:240:HIS:HD2	1:B:369:GLU:O	1.82	0.62
1:B:374:ASN:HD22	1:B:374:ASN:C	2.02	0.62
1:A:415:LYS:HZ3	1:A:415:LYS:HB3	1.65	0.61
1:A:398:GLN:HE22	1:B:297:TYR:N	1.91	0.61
1:A:250:LEU:H	1:A:250:LEU:CD1	2.13	0.61
1:A:114:ARG:HD3	2:A:1502:CHD:O26	2.00	0.60
1:A:357:ALA:HB1	1:A:362:VAL:HG11	1.83	0.60
1:A:208:ARG:HH21	1:A:410:VAL:HG21	1.61	0.60
1:B:108:ALA:HB3	1:B:109:PRO:HD3	1.83	0.60
1:A:282:ALA:HB1	1:B:285:GLN:HG2	1.83	0.60
1:B:197:SER:HB3	2:B:2501:CHD:O25	2.01	0.60
1:B:400:THR:HA	1:B:415:LYS:HD2	1.84	0.60
1:A:374:ASN:C	1:A:374:ASN:HD22	2.05	0.59
1:B:374:ASN:ND2	1:B:376:LEU:H	1.99	0.59
1:A:374:ASN:HD22	1:A:375:PRO:N	1.99	0.59
1:A:349:ASP:O	1:A:354:GLN:HG3	2.02	0.59
1:A:240:HIS:HD2	1:A:369:GLU:O	1.85	0.59
1:A:415:LYS:HB3	1:A:415:LYS:NZ	2.18	0.58
1:A:320:LYS:O	1:A:324:GLU:HG3	2.03	0.58
1:A:285:GLN:HG2	1:B:282:ALA:HB1	1.85	0.58
1:A:400:THR:HA	1:A:415:LYS:HD2	1.85	0.57
1:A:208:ARG:HG3	1:A:208:ARG:HH11	1.70	0.57
2:B:2502:CHD:H213	4:B:3264:HOH:O	2.04	0.57
1:B:213:VAL:CG2	1:B:215:ARG:HH21	2.18	0.56
1:A:374:ASN:ND2	1:A:376:LEU:H	2.04	0.56
1:B:415:LYS:HB3	1:B:415:LYS:NZ	2.21	0.56
1:A:184:ARG:NH2	4:A:1553:HOH:O	2.35	0.55
1:B:115:LEU:HD21	2:B:2502:CHD:H231	1.87	0.55
1:B:111:ILE:HA	1:B:114:ARG:HG2	1.89	0.54
1:A:250:LEU:HD12	1:A:250:LEU:N	2.17	0.54
1:B:251:GLU:H	1:B:251:GLU:CD	2.10	0.54
1:B:320:LYS:O	1:B:324:GLU:HG3	2.08	0.53
1:A:145:LYS:HB3	1:A:145:LYS:NZ	2.24	0.52
1:A:296:PRO:HB2	1:B:401:LEU:HB2	1.91	0.52
1:A:341:HIS:HE1	4:A:1651:HOH:O	1.92	0.52
1:B:349:ASP:O	1:B:354:GLN:HG3	2.09	0.52

*Continued on next page...*

*Continued from previous page...*

Atom-1	Atom-2	Interatomic distance (Å)	Clash overlap (Å)
2:A:1503:CHD:H212	2:A:1503:CHD:H12	1.90	0.52
1:A:135:TRP:CE3	1:A:372:ASN:HB3	2.45	0.52
1:A:145:LYS:HB3	1:A:145:LYS:HZ3	1.75	0.52
1:B:341:HIS:HE1	4:B:3148:HOH:O	1.93	0.51
1:A:98:LEU:HD11	2:A:1501:CHD:H162	1.92	0.51
1:B:145:LYS:HZ3	1:B:145:LYS:HB3	1.76	0.51
1:A:329:ASN:HD22	1:A:364:ASN:HB2	1.76	0.51
1:B:412:ARG:HG3	1:B:415:LYS:HZ1	1.75	0.50
1:B:415:LYS:HB3	1:B:415:LYS:HZ3	1.76	0.50
2:B:2503:CHD:H212	2:B:2503:CHD:H12	1.93	0.50
1:A:135:TRP:CZ3	1:A:372:ASN:HB3	2.48	0.49
1:B:269:VAL:HG21	2:B:2501:CHD:C24	2.42	0.49
1:B:208:ARG:HH11	1:B:208:ARG:HG3	1.76	0.49
1:A:341:HIS:HD2	4:A:1650:HOH:O	1.95	0.49
1:A:379:LYS:HE3	4:A:1620:HOH:O	2.12	0.49
1:B:213:VAL:HG21	1:B:215:ARG:HH21	1.77	0.49
1:B:145:LYS:HB3	1:B:145:LYS:NZ	2.28	0.49
1:A:422:GLN:HG2	1:A:423:LEU:HD23	1.95	0.48
1:B:213:VAL:HG22	1:B:215:ARG:HE	1.78	0.48
1:B:175:GLU:HG2	1:B:209:TYR:OH	2.15	0.47
1:A:177:MET:HB3	1:A:182:LEU:HD12	1.96	0.47
1:B:103:ILE:HG13	1:B:107:LEU:HG	1.97	0.47
1:A:173:ALA:O	1:A:177:MET:HG3	2.15	0.47
1:A:103:ILE:HG13	1:A:107:LEU:HG	1.95	0.47
1:A:273:GLY:O	1:B:298:ARG:HD2	2.15	0.47
1:B:357:ALA:HB1	1:B:362:VAL:CG1	2.45	0.46
1:B:102:PRO:O	1:B:103:ILE:C	2.53	0.46
2:B:2502:CHD:H12	2:B:2502:CHD:H212	1.97	0.46
1:B:236:CYS:HB3	1:B:371:LEU:HD22	1.97	0.46
1:B:316:ASP:HB3	1:B:352:TYR:CE1	2.50	0.46
1:B:341:HIS:CE1	1:B:343:GLU:HB2	2.51	0.46
1:B:102:PRO:O	1:B:107:LEU:HD12	2.15	0.46
1:B:193:GLN:HG2	1:B:280:VAL:HA	1.97	0.45
1:B:116:THR:HB	1:B:117:PRO:HD3	1.99	0.45
1:B:388:HIS:HD2	1:B:393:GLU:CD	2.19	0.45
1:A:116:THR:HB	1:A:117:PRO:HD3	1.98	0.45
1:A:111:ILE:HA	1:A:114:ARG:HG2	1.99	0.45
1:A:417:PHE:O	1:A:421:GLN:HG2	2.15	0.45
1:B:374:ASN:HD22	1:B:376:LEU:H	1.65	0.45
1:B:341:HIS:HD2	4:B:3150:HOH:O	2.00	0.45
1:A:155:ALA:HB1	1:A:156:PRO:HA	1.99	0.45

*Continued on next page...*

*Continued from previous page...*

Atom-1	Atom-2	Interatomic distance (Å)	Clash overlap (Å)
1:A:296:PRO:HA	1:B:398:GLN:NE2	2.32	0.45
1:A:298:ARG:HD3	4:A:1512:HOH:O	2.16	0.45
2:A:1501:CHD:H212	2:A:1502:CHD:H193	1.99	0.45
1:A:102:PRO:O	1:A:103:ILE:C	2.56	0.44
1:A:193:GLN:HG2	1:A:280:VAL:HA	1.99	0.44
1:A:288:MET:HG3	1:A:297:TYR:CD2	2.52	0.44
1:A:96:ARG:C	1:A:98:LEU:H	2.20	0.44
1:B:274:ASP:HA	1:B:275:PRO:HD3	1.81	0.44
1:B:220:LYS:HD2	4:B:3267:HOH:O	2.16	0.44
2:B:2501:CHD:H212	2:B:2502:CHD:H193	1.99	0.44
1:A:269:VAL:HG21	2:A:1501:CHD:C24	2.47	0.43
1:B:288:MET:HG3	1:B:297:TYR:CD2	2.53	0.43
1:A:101:LEU:HB2	1:A:104:GLN:HG3	2.00	0.43
1:A:412:ARG:HG2	1:A:412:ARG:HH11	1.82	0.43
1:B:226:ARG:HD3	1:B:279:GLU:OE1	2.19	0.43
1:A:97:ASP:OD2	1:A:208:ARG:NH1	2.34	0.43
1:A:236:CYS:HB3	1:A:371:LEU:HD22	1.99	0.43
1:A:208:ARG:HG3	1:A:208:ARG:NH1	2.32	0.43
2:A:1501:CHD:H232	2:A:1501:CHD:H211	1.75	0.43
1:A:164:ARG:HD2	1:A:201:SER:OG	2.18	0.43
1:A:388:HIS:HD2	1:A:393:GLU:CD	2.21	0.43
2:A:1502:CHD:H213	4:A:1713:HOH:O	2.18	0.43
1:A:316:ASP:HB3	1:A:352:TYR:CE1	2.53	0.43
1:B:266:PRO:HG2	2:B:2502:CHD:H11	1.99	0.43
1:B:329:ASN:HD22	1:B:364:ASN:HB2	1.84	0.43
4:A:1618:HOH:O	1:B:286:LYS:HD3	2.19	0.42
2:A:1502:CHD:H12	2:A:1502:CHD:H212	2.00	0.42
1:B:266:PRO:CG	2:B:2502:CHD:H11	2.49	0.42
1:B:180:ASP:HB2	1:B:182:LEU:HD13	2.01	0.42
1:B:116:THR:O	1:B:120:GLN:HG3	2.20	0.42
1:A:230:HIS:CE1	1:A:232:LEU:HB2	2.55	0.42
1:A:226:ARG:HD3	1:A:279:GLU:OE1	2.19	0.41
1:A:74:LEU:HD13	1:A:202:SER:HB3	2.01	0.41
1:A:171:GLU:H	1:A:171:GLU:CD	2.23	0.41
1:A:134:ILE:HG13	4:A:1586:HOH:O	2.21	0.41
1:B:158:LYS:HD3	1:B:160:TYR:OH	2.20	0.41
1:A:96:ARG:NH2	4:A:1691:HOH:O	2.53	0.41
1:A:111:ILE:O	1:A:114:ARG:HG3	2.21	0.41
1:A:398:GLN:NE2	1:B:296:PRO:HA	2.36	0.41
1:B:422:GLN:O	1:B:423:LEU:CB	2.58	0.41
1:B:184:ARG:NH2	4:B:3056:HOH:O	2.50	0.40

*Continued on next page...*

Continued from previous page...

Atom-1	Atom-2	Interatomic distance (Å)	Clash overlap (Å)
1:B:208:ARG:HG3	1:B:208:ARG:NH1	2.35	0.40
1:A:108:ALA:HB3	1:A:109:PRO:CD	2.51	0.40
1:B:137:SER:O	1:B:141:GLU:HG3	2.22	0.40

There are no symmetry-related clashes.

## 5.3 Torsion angles [i](#)

### 5.3.1 Protein backbone [i](#)

In the following table, the Percentiles column shows the percent Ramachandran outliers of the chain as a percentile score with respect to all X-ray entries followed by that with respect to entries of similar resolution.

The Analysed column shows the number of residues for which the backbone conformation was analysed, and the total number of residues.

Mol	Chain	Analysed	Favoured	Allowed	Outliers	Percentiles	
1	A	357/359 (99%)	346 (97%)	11 (3%)	0	100	100
1	B	357/359 (99%)	348 (98%)	9 (2%)	0	100	100
All	All	714/718 (99%)	694 (97%)	20 (3%)	0	100	100

There are no Ramachandran outliers to report.

### 5.3.2 Protein sidechains [i](#)

In the following table, the Percentiles column shows the percent sidechain outliers of the chain as a percentile score with respect to all X-ray entries followed by that with respect to entries of similar resolution.

The Analysed column shows the number of residues for which the sidechain conformation was analysed, and the total number of residues.

Mol	Chain	Analysed	Rotameric	Outliers	Percentiles	
1	A	316/324 (98%)	310 (98%)	6 (2%)	57	61
1	B	316/324 (98%)	311 (98%)	5 (2%)	62	67
All	All	632/648 (98%)	621 (98%)	11 (2%)	60	65

All (11) residues with a non-rotameric sidechain are listed below:

Mol	Chain	Res	Type
1	A	114	ARG
1	A	208	ARG
1	A	213	VAL
1	A	240	HIS
1	A	298	ARG
1	A	374	ASN
1	B	208	ARG
1	B	219	MET
1	B	240	HIS
1	B	251	GLU
1	B	374	ASN

Sometimes sidechains can be flipped to improve hydrogen bonding and reduce clashes. All (23) such sidechains are listed below:

Mol	Chain	Res	Type
1	A	211	ASN
1	A	235	GLN
1	A	240	HIS
1	A	247	HIS
1	A	329	ASN
1	A	341	HIS
1	A	354	GLN
1	A	364	ASN
1	A	374	ASN
1	A	388	HIS
1	A	398	GLN
1	A	421	GLN
1	B	235	GLN
1	B	240	HIS
1	B	329	ASN
1	B	341	HIS
1	B	354	GLN
1	B	364	ASN
1	B	374	ASN
1	B	388	HIS
1	B	390	GLN
1	B	398	GLN
1	B	421	GLN

### 5.3.3 RNA ⓘ

There are no RNA molecules in this entry.

## 5.4 Non-standard residues in protein, DNA, RNA chains [i](#)

There are no non-standard protein/DNA/RNA residues in this entry.

## 5.5 Carbohydrates [i](#)

There are no monosaccharides in this entry.

## 5.6 Ligand geometry [i](#)

8 ligands are modelled in this entry.

In the following table, the Counts columns list the number of bonds (or angles) for which Mogul statistics could be retrieved, the number of bonds (or angles) that are observed in the model and the number of bonds (or angles) that are defined in the Chemical Component Dictionary. The Link column lists molecule types, if any, to which the group is linked. The Z score for a bond length (or angle) is the number of standard deviations the observed value is removed from the expected value. A bond length (or angle) with  $|Z| > 2$  is considered an outlier worth inspection. RMSZ is the root-mean-square of all Z scores of the bond lengths (or angles).

Mol	Type	Chain	Res	Link	Bond lengths			Bond angles		
					Counts	RMSZ	# Z  > 2	Counts	RMSZ	# Z  > 2
2	CHD	B	2501	-	29,32,32	0.80	1 (3%)	48,51,51	1.79	8 (16%)
3	FES	A	1499	1	0,4,4	-	-	-	-	-
2	CHD	A	1501	-	29,32,32	0.82	1 (3%)	48,51,51	1.71	7 (14%)
2	CHD	A	1503	-	29,32,32	0.82	1 (3%)	48,51,51	1.16	3 (6%)
2	CHD	A	1502	-	29,32,32	0.83	2 (6%)	48,51,51	1.16	3 (6%)
3	FES	B	2999	1	0,4,4	-	-	-	-	-
2	CHD	B	2503	-	29,32,32	0.82	2 (6%)	48,51,51	1.19	4 (8%)
2	CHD	B	2502	-	29,32,32	0.81	2 (6%)	48,51,51	1.13	3 (6%)

In the following table, the Chirals column lists the number of chiral outliers, the number of chiral centers analysed, the number of these observed in the model and the number defined in the Chemical Component Dictionary. Similar counts are reported in the Torsion and Rings columns. '-' means no outliers of that kind were identified.

Mol	Type	Chain	Res	Link	Chirals	Torsions	Rings
2	CHD	B	2501	-	-	0/7/74/74	0/4/4/4
3	FES	A	1499	1	-	-	0/1/1/1
2	CHD	A	1501	-	-	0/7/74/74	0/4/4/4
2	CHD	A	1503	-	-	0/7/74/74	0/4/4/4
2	CHD	A	1502	-	-	0/7/74/74	0/4/4/4
3	FES	B	2999	1	-	-	0/1/1/1

*Continued on next page...*

*Continued from previous page...*

Mol	Type	Chain	Res	Link	Chirals	Torsions	Rings
2	CHD	B	2503	-	-	0/7/74/74	0/4/4/4
2	CHD	B	2502	-	-	0/7/74/74	0/4/4/4

All (9) bond length outliers are listed below:

Mol	Chain	Res	Type	Atoms	Z	Observed(Å)	Ideal(Å)
2	B	2502	CHD	O12-C12	-2.35	1.39	1.43
2	A	1502	CHD	C11-C12	2.33	1.57	1.53
2	B	2503	CHD	C11-C12	2.25	1.57	1.53
2	B	2503	CHD	O12-C12	-2.18	1.40	1.43
2	B	2502	CHD	C11-C12	2.18	1.56	1.53
2	A	1501	CHD	C11-C12	2.16	1.56	1.53
2	A	1503	CHD	C11-C12	2.12	1.56	1.53
2	B	2501	CHD	C11-C12	2.07	1.56	1.53
2	A	1502	CHD	O12-C12	-2.04	1.40	1.43

All (28) bond angle outliers are listed below:

Mol	Chain	Res	Type	Atoms	Z	Observed(°)	Ideal(°)
2	B	2501	CHD	C13-C17-C20	-6.31	111.96	119.50
2	A	1501	CHD	C13-C17-C20	-5.54	112.88	119.50
2	B	2501	CHD	C23-C22-C20	-4.79	108.27	114.72
2	A	1501	CHD	C23-C22-C20	-4.23	109.03	114.72
2	B	2501	CHD	C21-C20-C22	-3.20	105.34	110.36
2	A	1501	CHD	C11-C12-C13	-3.20	107.96	111.24
2	A	1503	CHD	C4-C5-C10	-3.19	109.27	112.66
2	B	2501	CHD	C11-C12-C13	-3.16	108.00	111.24
2	A	1501	CHD	C1-C2-C3	-3.00	106.61	110.47
2	A	1501	CHD	C21-C20-C22	-2.94	105.76	110.36
2	B	2501	CHD	C4-C5-C10	-2.70	109.79	112.66
2	B	2503	CHD	C4-C5-C10	-2.66	109.83	112.66
2	B	2503	CHD	C13-C17-C20	-2.57	116.43	119.50
2	B	2501	CHD	C1-C2-C3	-2.56	107.19	110.47
2	B	2502	CHD	C4-C5-C10	-2.53	109.97	112.66
2	B	2503	CHD	C11-C12-C13	-2.42	108.76	111.24
2	A	1502	CHD	C4-C5-C10	-2.39	110.11	112.66
2	A	1501	CHD	C4-C5-C10	-2.35	110.17	112.66
2	A	1502	CHD	C1-C2-C3	-2.33	107.47	110.47
2	A	1503	CHD	C13-C17-C20	-2.32	116.73	119.50
2	B	2501	CHD	C13-C14-C8	-2.21	111.91	114.74
2	B	2502	CHD	C1-C2-C3	-2.19	107.66	110.47
2	B	2501	CHD	C11-C9-C10	-2.18	111.48	113.73

*Continued on next page...*

*Continued from previous page...*

Mol	Chain	Res	Type	Atoms	Z	Observed(°)	Ideal(°)
2	A	1501	CHD	C6-C5-C4	2.15	113.66	111.19
2	A	1503	CHD	C11-C12-C13	-2.11	109.07	111.24
2	A	1502	CHD	C11-C12-C13	-2.10	109.08	111.24
2	B	2502	CHD	C11-C12-C13	-2.06	109.12	111.24
2	B	2503	CHD	C1-C2-C3	-2.06	107.83	110.47

There are no chirality outliers.

There are no torsion outliers.

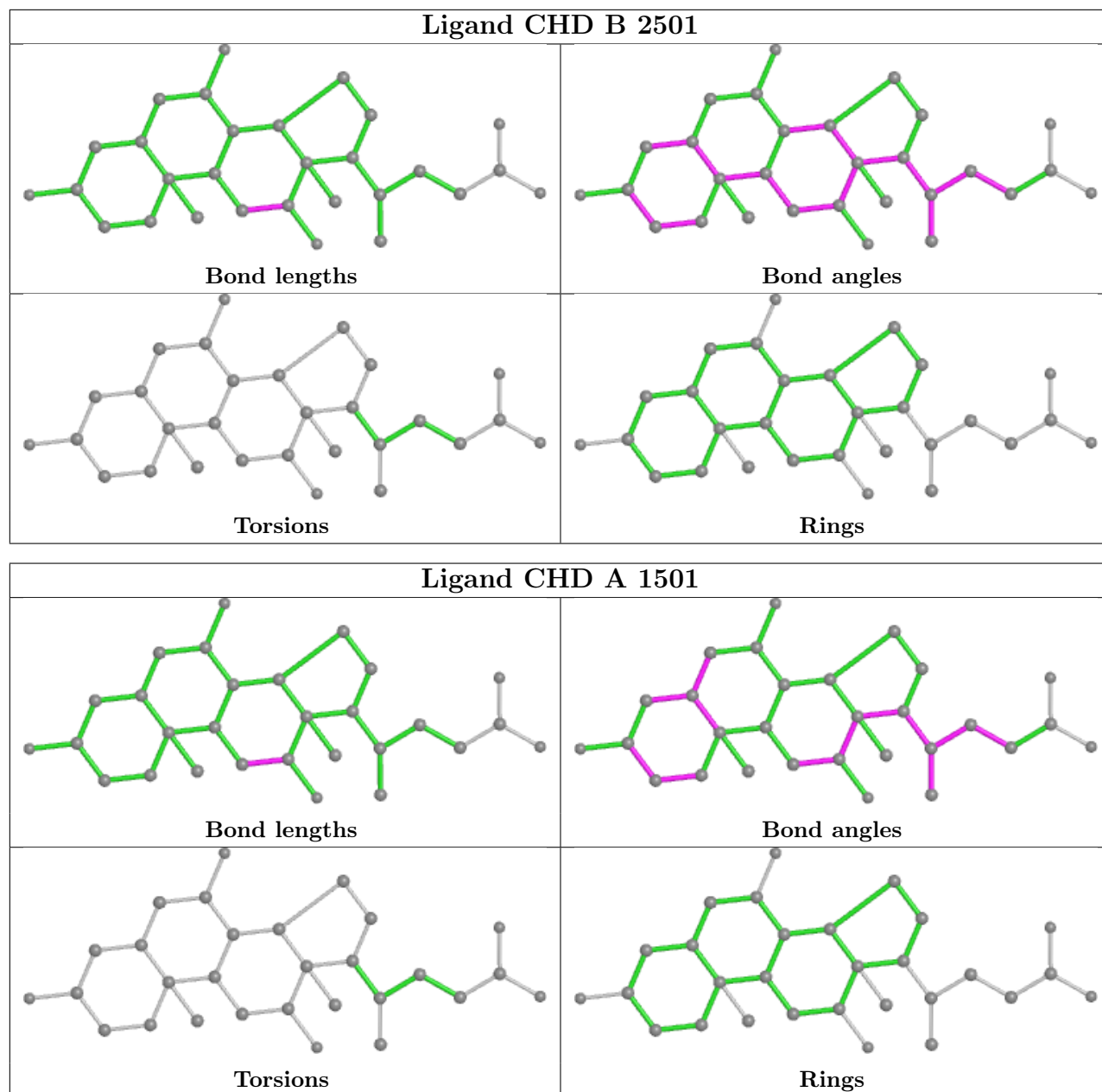
There are no ring outliers.

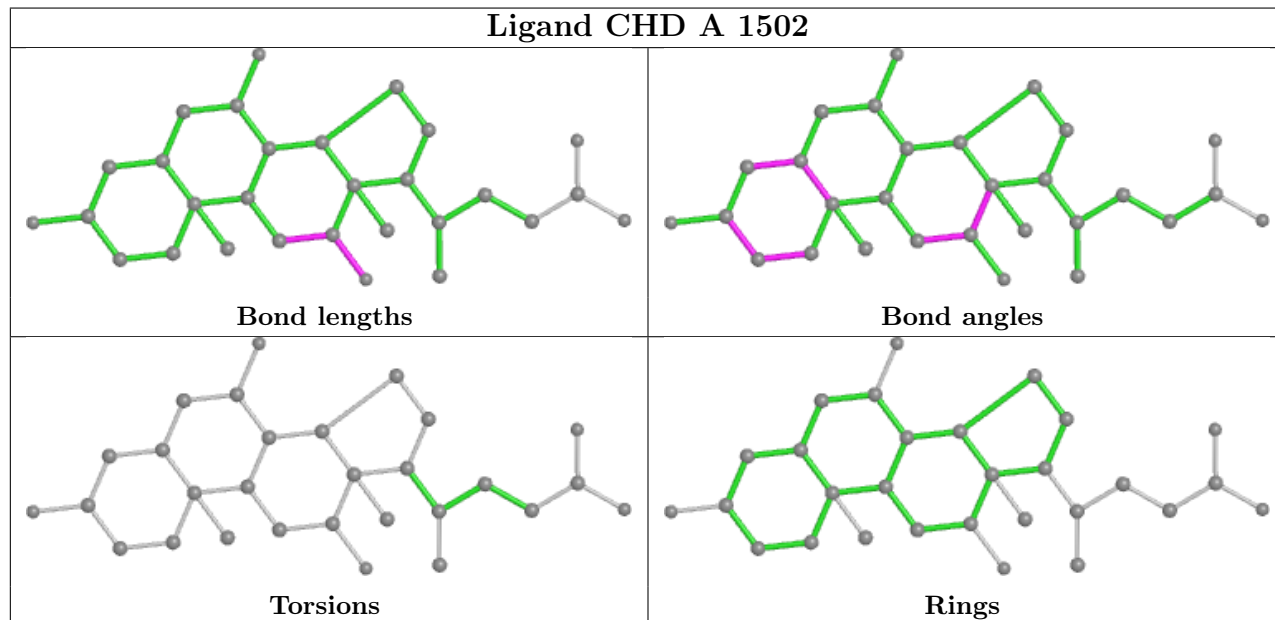
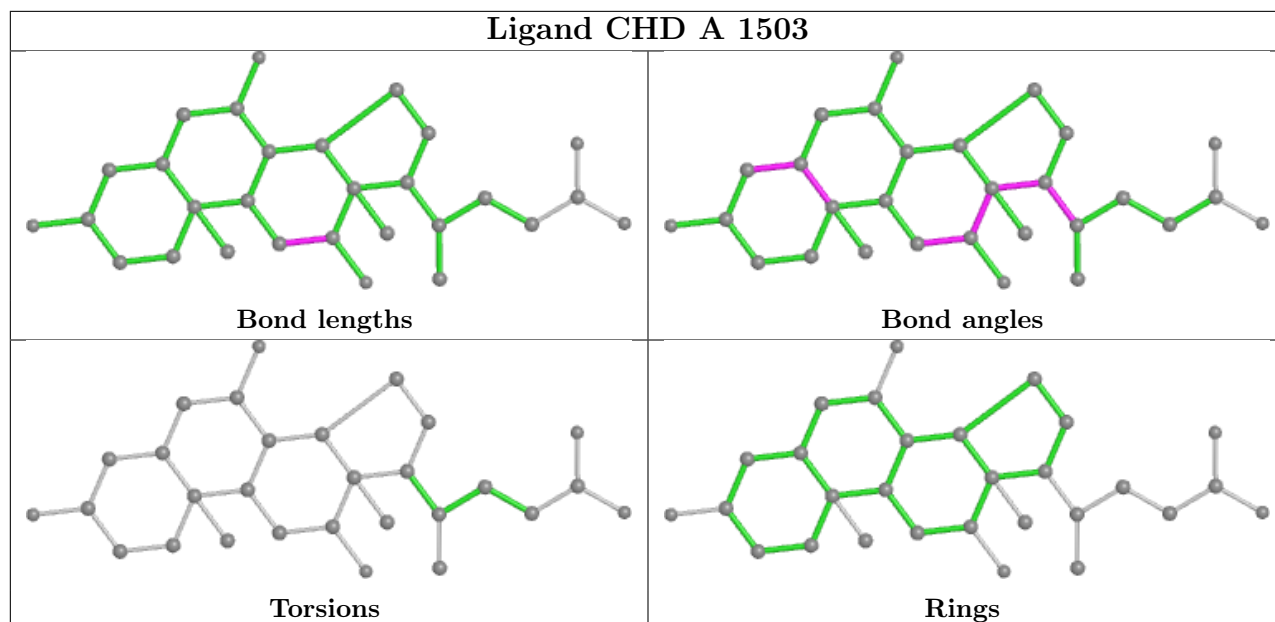
6 monomers are involved in 24 short contacts:

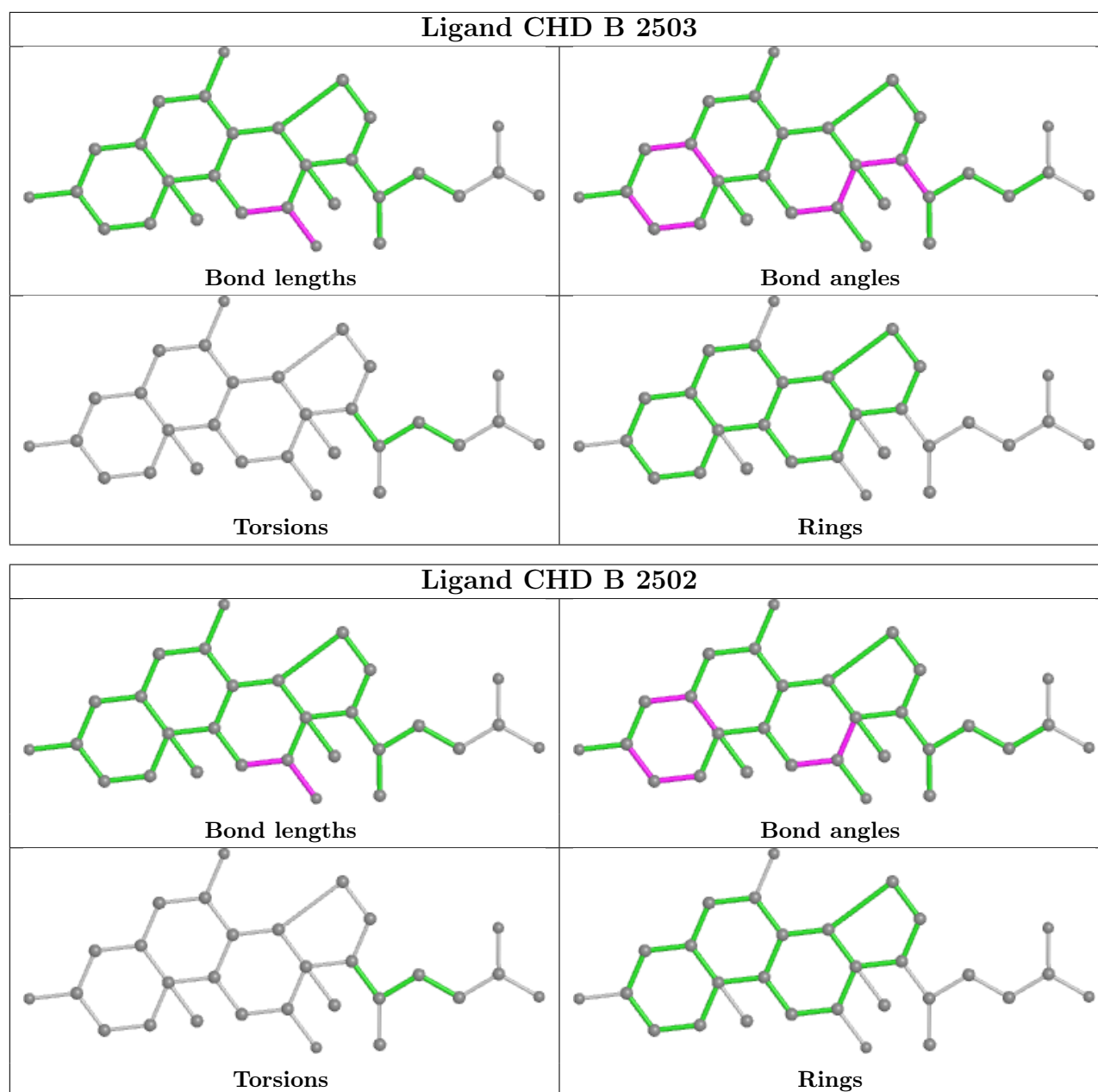
Mol	Chain	Res	Type	Clashes	Symm-Clashes
2	B	2501	CHD	6	0
2	A	1501	CHD	7	0
2	A	1503	CHD	1	0
2	A	1502	CHD	5	0
2	B	2503	CHD	1	0
2	B	2502	CHD	6	0

The following is a two-dimensional graphical depiction of Mogul quality analysis of bond lengths, bond angles, torsion angles, and ring geometry for all instances of the Ligand of Interest. In addition, ligands with molecular weight > 250 and outliers as shown on the validation Tables will also be included. For torsion angles, if less than 5% of the Mogul distribution of torsion angles is within 10 degrees of the torsion angle in question, then that torsion angle is considered an outlier. Any bond that is central to one or more torsion angles identified as an outlier by Mogul will be highlighted in the graph. For rings, the root-mean-square deviation (RMSD) between the ring in question and similar rings identified by Mogul is calculated over all ring torsion angles. If the average RMSD is greater than 60 degrees and the minimal RMSD between the ring in question and any Mogul-identified rings is also greater than 60 degrees, then that ring is considered an outlier. The outliers are highlighted in purple. The color gray indicates Mogul did not find sufficient equivalents in the CSD to analyse the geometry.









## 5.7 Other polymers [i](#)

There are no such residues in this entry.

## 5.8 Polymer linkage issues [i](#)

There are no chain breaks in this entry.

## 6 Fit of model and data [i](#)

### 6.1 Protein, DNA and RNA chains [i](#)

Unable to reproduce the depositors R factor - this section is therefore empty.

### 6.2 Non-standard residues in protein, DNA, RNA chains [i](#)

Unable to reproduce the depositors R factor - this section is therefore empty.

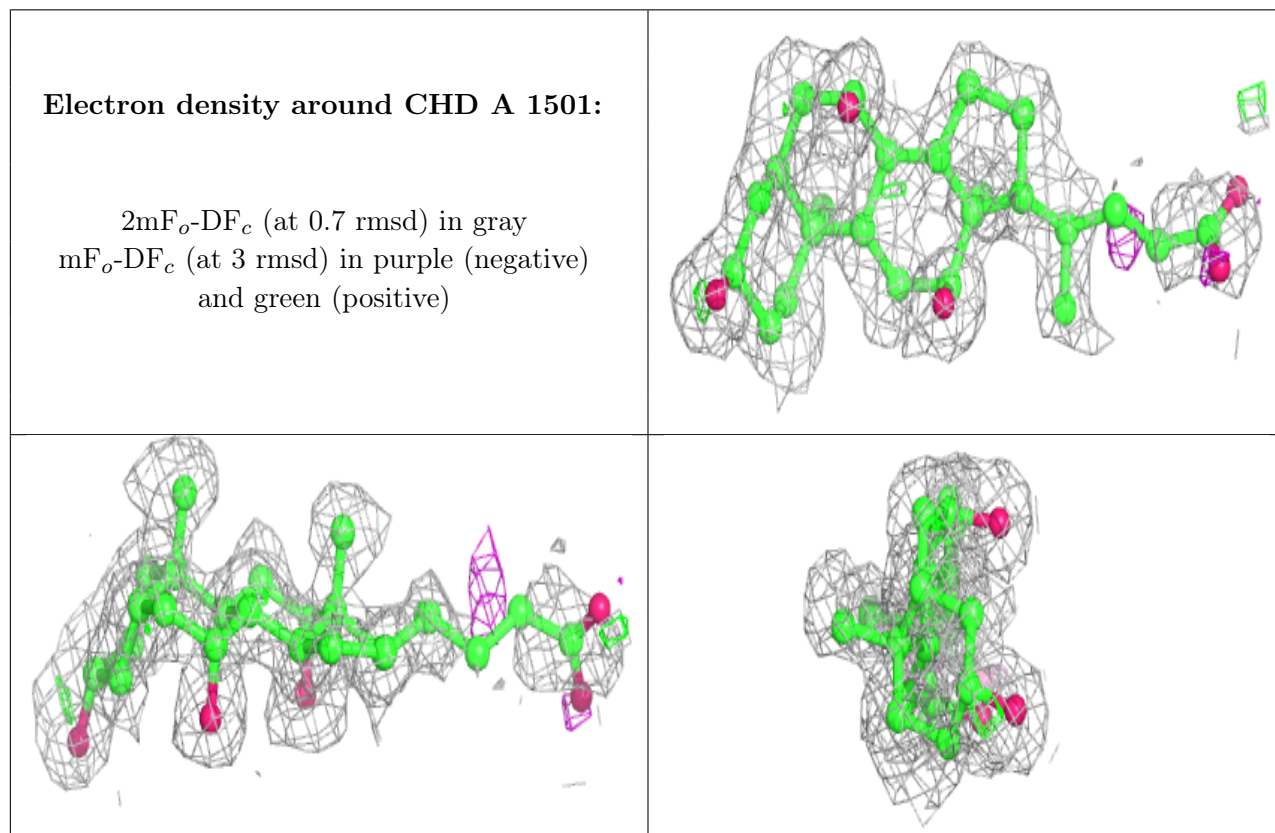
### 6.3 Carbohydrates [i](#)

Unable to reproduce the depositors R factor - this section is therefore empty.

### 6.4 Ligands [i](#)

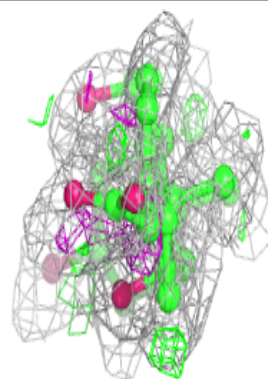
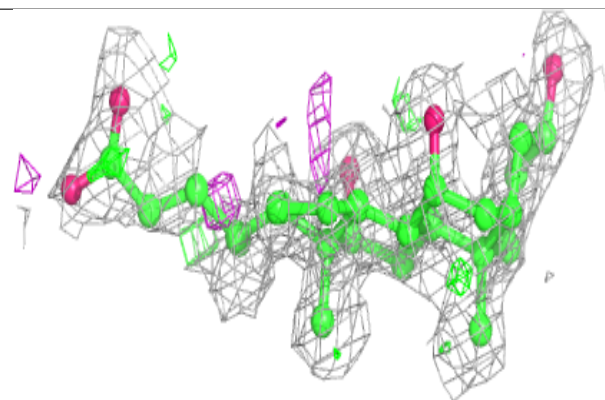
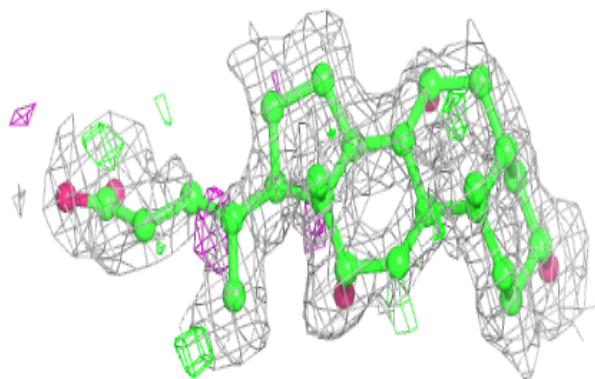
Unable to reproduce the depositors R factor - this section is therefore empty.

The following is a graphical depiction of the model fit to experimental electron density of all instances of the Ligand of Interest. In addition, ligands with molecular weight > 250 and outliers as shown on the geometry validation Tables will also be included. Each fit is shown from different orientation to approximate a three-dimensional view.

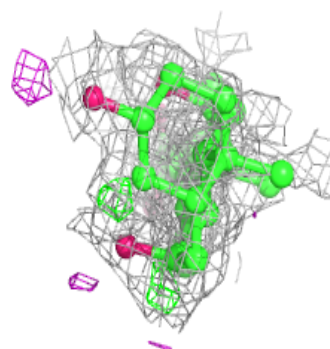
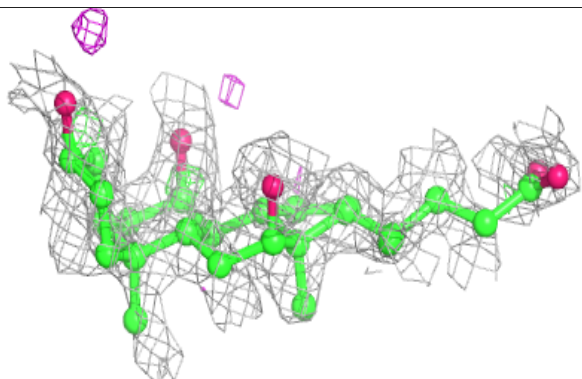
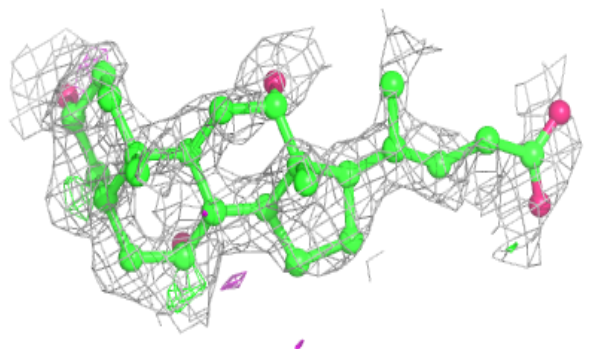


**Electron density around CHD A 1502:**

$2mF_o-DF_c$  (at 0.7 rmsd) in gray  
 $mF_o-DF_c$  (at 3 rmsd) in purple (negative)  
and green (positive)

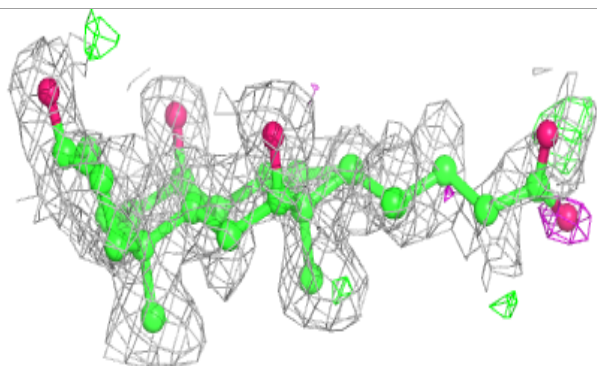
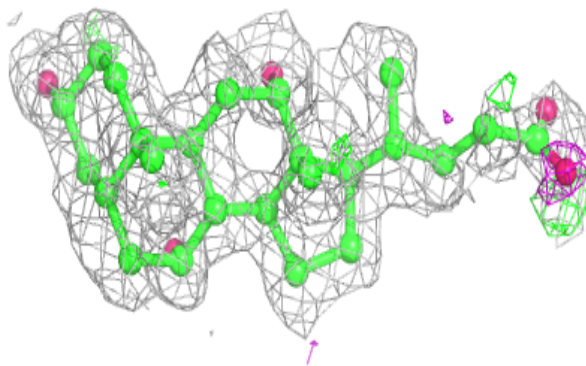
**Electron density around CHD A 1503:**

$2mF_o-DF_c$  (at 0.7 rmsd) in gray  
 $mF_o-DF_c$  (at 3 rmsd) in purple (negative)  
and green (positive)

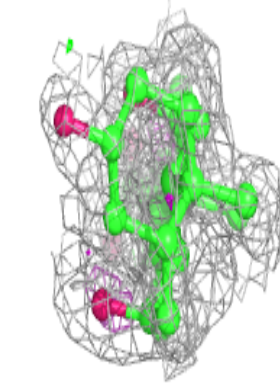
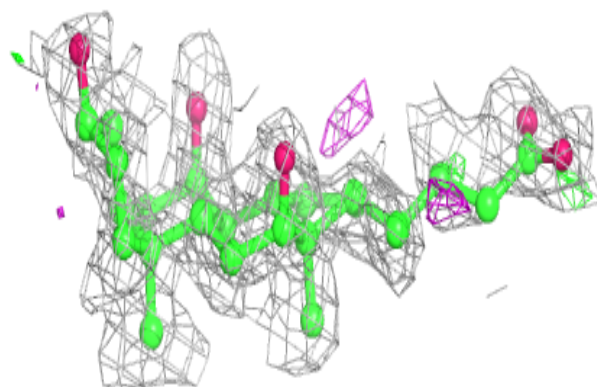
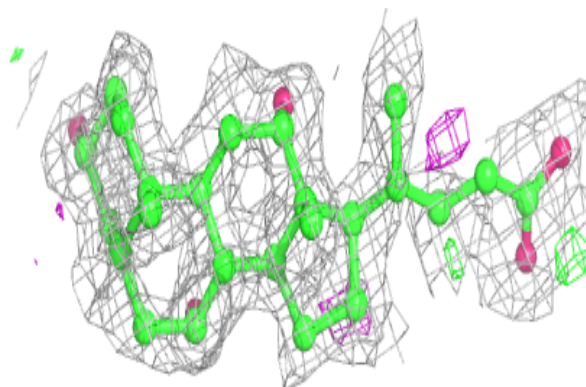


**Electron density around CHD B 2501:**

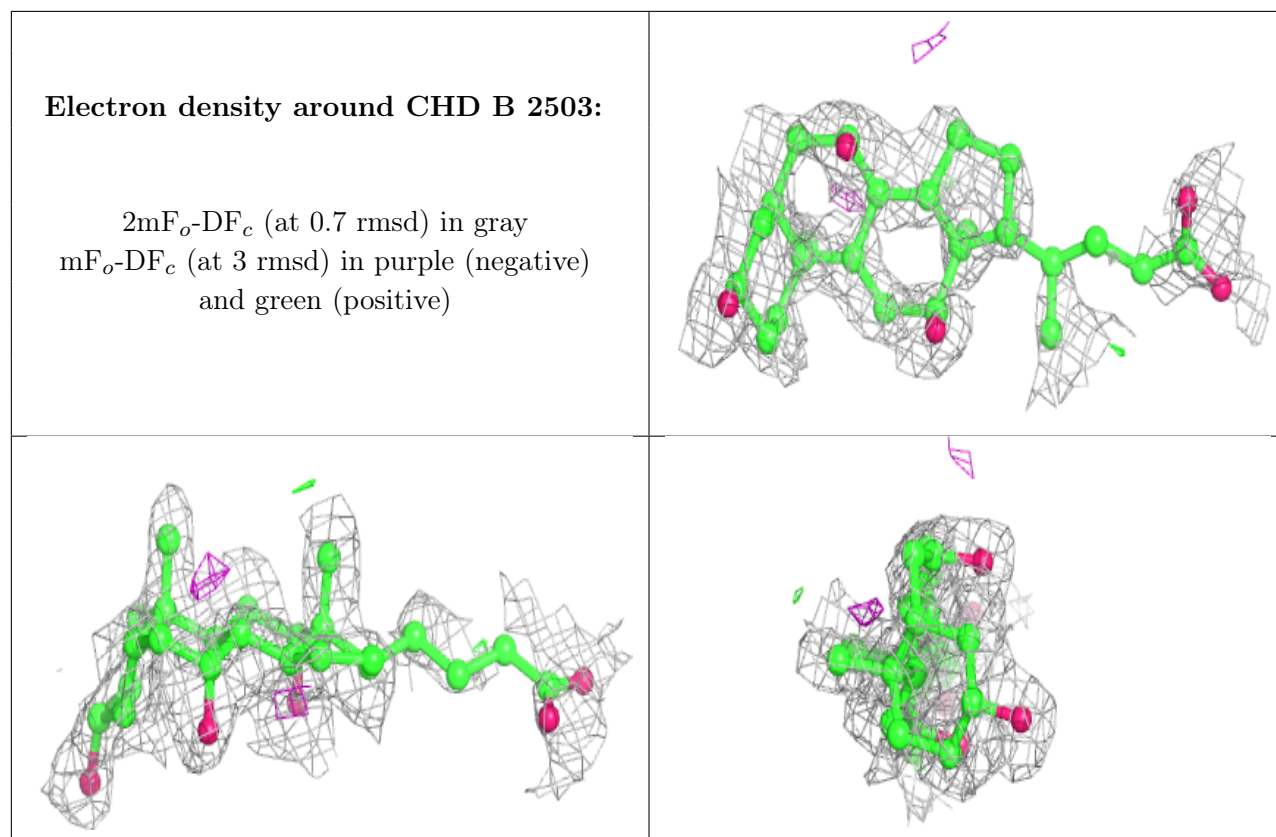
$2mF_o-DF_c$  (at 0.7 rmsd) in gray  
 $mF_o-DF_c$  (at 3 rmsd) in purple (negative)  
and green (positive)

**Electron density around CHD B 2502:**

$2mF_o-DF_c$  (at 0.7 rmsd) in gray  
 $mF_o-DF_c$  (at 3 rmsd) in purple (negative)  
and green (positive)







## 6.5 Other polymers [i](#)

Unable to reproduce the depositors R factor - this section is therefore empty.