



Full wwPDB X-ray Structure Validation Report ⓘ

Dec 11, 2023 – 01:56 am GMT

PDB ID : 1H1B
Title : Crystal structure of human neutrophil elastase complexed with an inhibitor (GW475151)
Authors : Macdonald, S.J.F.; Dowle, M.D.; Harrison, L.A.; Clarke, G.D.E.; Inglis, G.G.A.; Johnson, M.R.; Smith, R.A.; Amour, A.; Fleetwood, G.; Humphreys, D.C.; Molloy, C.R.; Dixon, M.; Godward, R.E.; Wonacott, A.J.; Singh, O.M.P.; Hodgson, S.T.; Hardy, G.W.
Deposited on : 2002-07-05
Resolution : 2.00 Å(reported)

This is a Full wwPDB X-ray Structure Validation Report for a publicly released PDB entry.

We welcome your comments at validation@mail.wwpdb.org

A user guide is available at

<https://www.wwpdb.org/validation/2017/XrayValidationReportHelp>

with specific help available everywhere you see the ⓘ symbol.

The types of validation reports are described at

<http://www.wwpdb.org/validation/2017/FAQs#types>.

The following versions of software and data (see [references ⓘ](#)) were used in the production of this report:

MolProbity : 4.02b-467
Mogul : 1.8.4, CSD as541be (2020)
Xtrriage (Phenix) : **NOT EXECUTED**
EDS : **NOT EXECUTED**
buster-report : 1.1.7 (2018)
Percentile statistics : 20191225.v01 (using entries in the PDB archive December 25th 2019)
Ideal geometry (proteins) : Engh & Huber (2001)
Ideal geometry (DNA, RNA) : Parkinson et al. (1996)
Validation Pipeline (wwPDB-VP) : 2.36

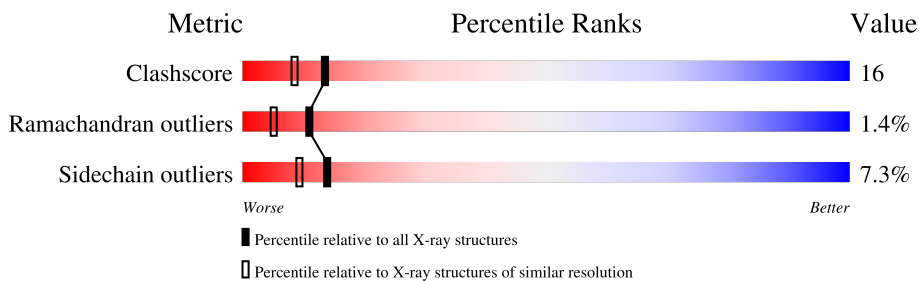
1 Overall quality at a glance

The following experimental techniques were used to determine the structure:

X-RAY DIFFRACTION

The reported resolution of this entry is 2.00 Å.

Percentile scores (ranging between 0-100) for global validation metrics of the entry are shown in the following graphic. The table shows the number of entries on which the scores are based.



Metric	Whole archive (#Entries)	Similar resolution (#Entries, resolution range(Å))
Clashscore	141614	9178 (2.00-2.00)
Ramachandran outliers	138981	9054 (2.00-2.00)
Sidechain outliers	138945	9053 (2.00-2.00)

The table below summarises the geometric issues observed across the polymeric chains and their fit to the electron density. The red, orange, yellow and green segments of the lower bar indicate the fraction of residues that contain outliers for ≥ 3 , 2, 1 and 0 types of geometric quality criteria respectively. A grey segment represents the fraction of residues that are not modelled. The numeric value for each fraction is indicated below the corresponding segment, with a dot representing fractions $\leq 5\%$

Note EDS was not executed.

Mol	Chain	Length	Quality of chain
1	A	218	74% 22% . .
1	B	218	66% 30% .
2	C	2	50% 50%
2	D	2	50% 50%
2	E	2	100%
2	F	2	100%

2 Entry composition i

There are 4 unique types of molecules in this entry. The entry contains 3670 atoms, of which 0 are hydrogens and 0 are deuteriums.

In the tables below, the ZeroOcc column contains the number of atoms modelled with zero occupancy, the AltConf column contains the number of residues with at least one atom in alternate conformation and the Trace column contains the number of residues modelled with at most 2 atoms.

- Molecule 1 is a protein called LEUKOCYTE ELASTASE.

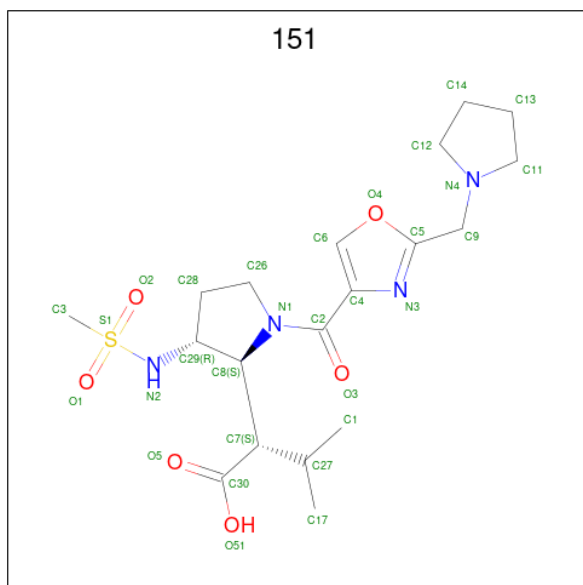
Mol	Chain	Residues	Atoms					ZeroOcc	AltConf	Trace
			Total	C	N	O	S			
1	A	218	Total 1636	C 1026	N 316	O 283	S 11	0	0	0
1	B	218	Total 1636	C 1026	N 316	O 283	S 11	0	0	0

- Molecule 2 is an oligosaccharide called alpha-L-fucopyranose-(1-6)-2-acetamido-2-deoxy-beta-D-glucopyranose.



Mol	Chain	Residues	Atoms				ZeroOcc	AltConf	Trace
			Total	C	N	O			
2	C	2	Total 24	C 14	N 1	O 9	0	0	0
2	D	2	Total 24	C 14	N 1	O 9	0	0	0
2	E	2	Total 24	C 14	N 1	O 9	0	0	0
2	F	2	Total 24	C 14	N 1	O 9	0	0	0

- Molecule 3 is (2S)-3-METHYL-2-((2R,3S)-3-[(METHYLSULFONYL)AMINO]-1-{[2-(PYRROLIDIN-1-YLMETHYL)-1,3-OXAZOL-4-YL]CARBONYL}PYRROLIDIN-2-YL)BUTANOIC ACID (three-letter code: 151) (formula: C₁₉H₃₀N₄O₆S).



Mol	Chain	Residues	Atoms					ZeroOcc	AltConf
3	A	1	Total	C	N	O	S	0	0
			29	19	4	5	1		
3	B	1	Total	C	N	O	S	0	0
			29	19	4	5	1		

- Molecule 4 is water.

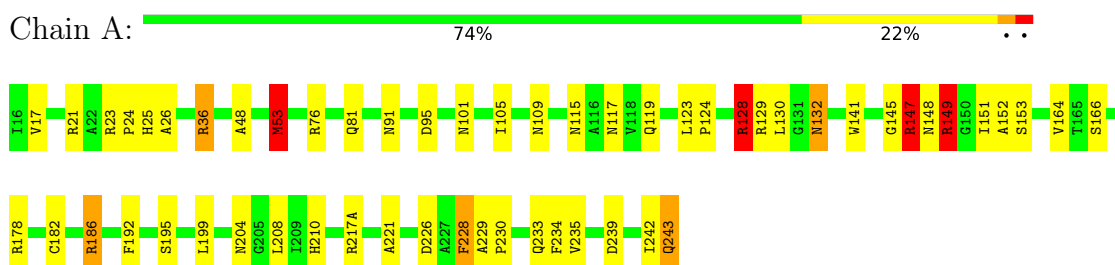
Mol	Chain	Residues	Atoms		ZeroOcc	AltConf
4	A	138	Total	O	0	0
			138	138		
4	B	106	Total	O	0	0
			106	106		

3 Residue-property plots [i](#)

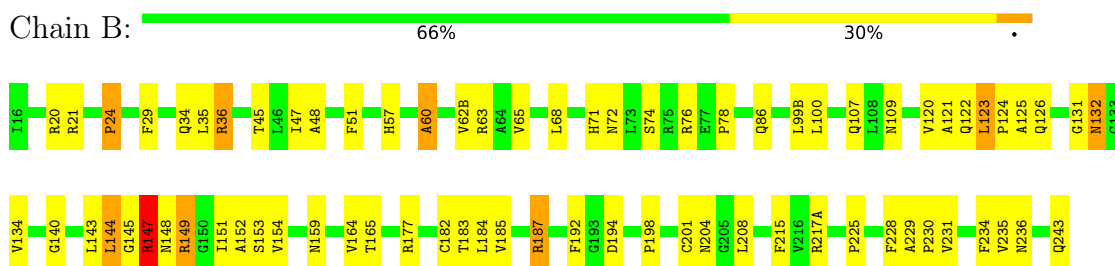
These plots are drawn for all protein, RNA, DNA and oligosaccharide chains in the entry. The first graphic for a chain summarises the proportions of the various outlier classes displayed in the second graphic. The second graphic shows the sequence view annotated by issues in geometry. Residues are color-coded according to the number of geometric quality criteria for which they contain at least one outlier: green = 0, yellow = 1, orange = 2 and red = 3 or more. Stretches of 2 or more consecutive residues without any outlier are shown as a green connector. Residues present in the sample, but not in the model, are shown in grey.

Note EDS was not executed.

- Molecule 1: LEUKOCYTE ELASTASE



- Molecule 1: LEUKOCYTE ELASTASE



- Molecule 2: alpha-L-fucopyranose-(1-6)-2-acetamido-2-deoxy-beta-D-glucopyranose



- Molecule 2: alpha-L-fucopyranose-(1-6)-2-acetamido-2-deoxy-beta-D-glucopyranose



- Molecule 2: alpha-L-fucopyranose-(1-6)-2-acetamido-2-deoxy-beta-D-glucopyranose



MAG1
FUC2

- Molecule 2: alpha-L-fucopyranose-(1-6)-2-acetamido-2-deoxy-beta-D-glucopyranose

Chain F:

100%

MAG1
FUC2

4 Data and refinement statistics

Xtrriage (Phenix) and EDS were not executed - this section is therefore incomplete.

Property	Value	Source
Space group	P 43 2 2	Depositor
Cell constants a, b, c, α , β , γ	68.88Å 68.88Å 241.15Å 90.00° 90.00° 90.00°	Depositor
Resolution (Å)	20.00 – 2.00	Depositor
% Data completeness (in resolution range)	96.0 (20.00-2.00)	Depositor
R_{merge}	0.09	Depositor
R_{sym}	(Not available)	Depositor
Refinement program	REFMAC	Depositor
R, R_{free}	0.251 , 0.310	Depositor
Estimated twinning fraction	No twinning to report.	Xtrriage
Total number of atoms	3670	wwPDB-VP
Average B, all atoms (Å ²)	41.0	wwPDB-VP

5 Model quality [i](#)

5.1 Standard geometry [i](#)

Bond lengths and bond angles in the following residue types are not validated in this section: NAG, 151, FUC

The Z score for a bond length (or angle) is the number of standard deviations the observed value is removed from the expected value. A bond length (or angle) with $|Z| > 5$ is considered an outlier worth inspection. RMSZ is the root-mean-square of all Z scores of the bond lengths (or angles).

Mol	Chain	Bond lengths		Bond angles	
		RMSZ	# $ Z > 5$	RMSZ	# $ Z > 5$
1	A	1.05	1/1666 (0.1%)	1.04	4/2263 (0.2%)
1	B	0.94	0/1666	1.01	5/2263 (0.2%)
All	All	0.99	1/3332 (0.0%)	1.03	9/4526 (0.2%)

All (1) bond length outliers are listed below:

Mol	Chain	Res	Type	Atoms	Z	Observed(Å)	Ideal(Å)
1	A	221	ALA	CA-CB	5.42	1.63	1.52

All (9) bond angle outliers are listed below:

Mol	Chain	Res	Type	Atoms	Z	Observed(°)	Ideal(°)
1	B	100	LEU	CA-CB-CG	7.79	133.22	115.30
1	A	182	CYS	CA-CB-SG	7.37	127.26	114.00
1	A	53	MET	CG-SD-CE	-5.89	90.77	100.20
1	B	187	ARG	NE-CZ-NH1	5.78	123.19	120.30
1	B	60	ALA	C-N-CA	-5.55	107.82	121.70
1	B	182	CYS	CA-CB-SG	5.48	123.86	114.00
1	B	187	ARG	NE-CZ-NH2	-5.37	117.61	120.30
1	A	95	ASP	CB-CG-OD2	5.07	122.86	118.30
1	A	128	ARG	NE-CZ-NH2	5.00	122.80	120.30

There are no chirality outliers.

There are no planarity outliers.

5.2 Too-close contacts [i](#)

In the following table, the Non-H and H(model) columns list the number of non-hydrogen atoms and hydrogen atoms in the chain respectively. The H(added) column lists the number of hydrogen

atoms added and optimized by MolProbity. The Clashes column lists the number of clashes within the asymmetric unit, whereas Symm-Clashes lists symmetry-related clashes.

Mol	Chain	Non-H	H(model)	H(added)	Clashes	Symm-Clashes
1	A	1636	0	1649	51	1
1	B	1636	0	1649	56	0
2	C	24	0	22	1	0
2	D	24	0	22	2	0
2	E	24	0	22	0	0
2	F	24	0	22	0	0
3	A	29	0	29	5	0
3	B	29	0	29	1	0
4	A	138	0	0	12	2
4	B	106	0	0	13	3
All	All	3670	0	3444	110	4

The all-atom clashscore is defined as the number of clashes found per 1000 atoms (including hydrogen atoms). The all-atom clashscore for this structure is 16.

All (110) close contacts within the same asymmetric unit are listed below, sorted by their clash magnitude.

Atom-1	Atom-2	Interatomic distance (Å)	Clash overlap (Å)
1:B:148:ASN:O	1:B:149:ARG:HG2	1.35	1.27
1:B:122:GLN:NE2	4:B:2058:HOH:O	1.74	1.21
1:B:76:ARG:NH1	1:B:78:PRO:HD3	1.72	1.03
1:B:122:GLN:CD	4:B:2058:HOH:O	1.89	1.03
1:A:48:ALA:HB2	1:A:242:ILE:HD11	1.42	0.97
1:B:76:ARG:HH12	1:B:78:PRO:HD3	1.23	0.97
1:A:17:VAL:HG22	1:A:145:GLY:HA2	1.47	0.93
1:B:145:GLY:O	1:B:147:ARG:HB2	1.68	0.93
3:A:400:151:H3C1	4:A:2015:HOH:O	1.70	0.91
1:B:76:ARG:HH12	1:B:78:PRO:CD	1.87	0.87
1:B:122:GLN:OE1	4:B:2058:HOH:O	1.91	0.84
1:B:60:ALA:O	4:B:2019:HOH:O	1.96	0.83
1:A:153:SER:OG	4:A:2087:HOH:O	1.97	0.82
1:A:243:GLN:O	1:A:243:GLN:NE2	2.16	0.79
1:A:132:ASN:OD1	4:A:2082:HOH:O	2.01	0.78
1:A:17:VAL:CG2	1:A:145:GLY:HA2	2.15	0.77
1:B:122:GLN:OE1	4:B:2057:HOH:O	2.03	0.76
1:B:236:ASN:ND2	4:B:2099:HOH:O	2.05	0.74
1:B:132:ASN:OD1	4:B:2062:HOH:O	2.05	0.73
1:B:35:LEU:O	1:B:36:ARG:HB2	1.91	0.71
1:A:109:ASN:HD22	2:D:1:NAG:H83	1.56	0.70

Continued on next page...

Continued from previous page...

Atom-1	Atom-2	Interatomic distance (Å)	Clash overlap (Å)
1:B:234:PHE:HA	4:B:2097:HOH:O	1.90	0.70
1:A:124:PRO:O	1:A:235:VAL:HG21	1.92	0.68
1:B:72:ASN:OD1	1:B:74:SER:OG	2.13	0.66
1:A:239:ASP:HA	1:A:242:ILE:HG22	1.78	0.66
1:A:226:ASP:OD2	4:A:2126:HOH:O	2.13	0.66
1:A:178:ARG:O	4:A:2095:HOH:O	2.13	0.65
1:B:123:LEU:HD13	1:B:231:VAL:HG11	1.80	0.64
1:A:145:GLY:O	1:A:147:ARG:HB2	1.96	0.64
1:A:124:PRO:HA	1:A:208:LEU:HD13	1.81	0.62
1:B:148:ASN:O	1:B:149:ARG:CG	2.30	0.62
1:A:129:ARG:NH2	1:A:178:ARG:O	2.29	0.61
1:B:48:ALA:HB3	1:B:51:PHE:HB2	1.84	0.60
3:A:400:151:O3	4:A:2136:HOH:O	2.16	0.60
1:A:192:PHE:CE1	3:A:400:151:H3C3	2.37	0.59
1:B:21:ARG:HG2	1:B:154:VAL:HG11	1.82	0.59
1:A:17:VAL:HG22	1:A:145:GLY:CA	2.27	0.58
1:B:184:LEU:HG	1:B:185:VAL:N	2.17	0.58
1:A:128:ARG:HG2	4:A:2079:HOH:O	2.02	0.58
1:A:48:ALA:HB2	1:A:242:ILE:CD1	2.26	0.58
1:A:132:ASN:ND2	1:A:164:VAL:HA	2.19	0.58
1:B:29:PHE:CG	1:B:121:ALA:HB2	2.41	0.56
1:B:20:ARG:NH2	1:B:159:ASN:OD1	2.36	0.55
1:A:36:ARG:NH2	4:A:2013:HOH:O	2.41	0.53
1:A:217(A):ARG:CZ	4:A:2113:HOH:O	2.56	0.53
1:B:99(B):LEU:HD12	1:B:215:PHE:HB3	1.91	0.53
1:B:124:PRO:O	1:B:235:VAL:HG21	2.08	0.52
1:A:186:ARG:NH1	4:A:2101:HOH:O	2.43	0.52
1:A:192:PHE:CD1	3:A:400:151:H3C3	2.44	0.52
1:B:76:ARG:HH11	1:B:76:ARG:HG3	1.73	0.52
1:A:101:ASN:HD22	1:A:234:PHE:HZ	1.57	0.51
1:A:109:ASN:ND2	2:D:1:NAG:H83	2.24	0.51
1:A:123:LEU:HB3	1:A:124:PRO:HD2	1.92	0.51
1:B:177:ARG:HG3	4:B:2069:HOH:O	2.09	0.51
1:B:123:LEU:HD13	1:B:231:VAL:CG1	2.40	0.51
1:B:21:ARG:HG2	1:B:154:VAL:CG1	2.41	0.50
1:B:143:LEU:HD22	1:B:192:PHE:HD2	1.75	0.50
1:A:81:GLN:HG2	4:A:2049:HOH:O	2.10	0.50
1:A:243:GLN:HG2	4:A:2131:HOH:O	2.12	0.50
1:B:131:GLY:O	1:B:132:ASN:C	2.49	0.50
1:B:76:ARG:HG3	1:B:76:ARG:O	2.11	0.49
1:A:239:ASP:HA	1:A:242:ILE:CG2	2.42	0.48

Continued on next page...

Continued from previous page...

Atom-1	Atom-2	Interatomic distance (Å)	Clash overlap (Å)
1:A:24:PRO:O	1:A:25:HIS:C	2.51	0.48
1:A:53:MET:HB2	1:A:105:ILE:HD13	1.95	0.48
1:B:243:GLN:OXT	4:B:2103:HOH:O	2.19	0.48
1:A:141:TRP:O	1:A:151:ILE:HG23	2.13	0.48
1:A:25:HIS:CG	1:A:117:ASN:HD22	2.32	0.48
3:B:400:151:C26	3:B:400:151:N3	2.77	0.47
1:A:25:HIS:CG	1:A:117:ASN:ND2	2.83	0.47
1:B:131:GLY:O	1:B:134:VAL:HG23	2.15	0.47
1:A:23:ARG:HB3	1:A:26:ALA:HB2	1.97	0.47
1:B:24:PRO:HA	1:B:71:HIS:CE1	2.49	0.47
1:B:57:HIS:HB3	4:B:2017:HOH:O	2.15	0.46
1:B:76:ARG:HH12	1:B:78:PRO:CG	2.27	0.46
1:B:86:GLN:NE2	1:B:109:ASN:HA	2.30	0.46
1:B:234:PHE:CA	4:B:2097:HOH:O	2.58	0.46
1:A:151:ILE:HG22	1:A:152:ALA:O	2.16	0.46
1:B:151:ILE:HG23	1:B:152:ALA:N	2.31	0.46
1:A:243:GLN:O	1:A:243:GLN:CG	2.64	0.45
1:A:148:ASN:O	1:A:149:ARG:CB	2.65	0.45
1:B:45:THR:OG1	1:B:198:PRO:HB3	2.16	0.45
1:B:201:CYS:O	1:B:204:ASN:C	2.55	0.45
1:A:124:PRO:CA	1:A:208:LEU:HD13	2.46	0.45
1:B:63:ARG:NH1	4:B:2027:HOH:O	2.50	0.44
1:B:125:ALA:O	1:B:126:GLN:C	2.54	0.44
1:B:144:LEU:HA	1:B:144:LEU:HD12	1.62	0.44
1:B:62(B):VAL:HA	1:B:65:VAL:HG23	1.99	0.44
1:A:115:ASN:O	1:A:119:GLN:OE1	2.36	0.44
1:A:242:ILE:O	1:A:243:GLN:C	2.56	0.43
1:A:148:ASN:C	1:A:149:ARG:HG3	2.38	0.43
1:B:151:ILE:CG2	1:B:152:ALA:N	2.81	0.43
1:A:192:PHE:HE1	3:A:400:151:H3C3	1.84	0.43
1:B:140:GLY:HA3	1:B:194:ASP:OD1	2.19	0.43
1:B:86:GLN:HE21	1:B:109:ASN:HA	1.83	0.43
1:B:148:ASN:C	1:B:149:ARG:HG2	2.22	0.42
1:B:217(A):ARG:NH2	1:B:225:PRO:O	2.52	0.42
1:A:229:ALA:HA	1:A:230:PRO:HD3	1.91	0.42
1:A:204:ASN:N	2:C:2:FUC:O4	2.53	0.42
1:B:126:GLN:HA	1:B:235:VAL:HB	2.01	0.42
1:A:199:LEU:HB2	1:A:228:PHE:CD1	2.55	0.42
1:A:239:ASP:CA	1:A:242:ILE:HG22	2.48	0.42
1:B:229:ALA:HA	1:B:230:PRO:HD3	1.76	0.42
1:B:47:ILE:C	1:B:120:VAL:HG13	2.41	0.41

Continued on next page...

Continued from previous page...

Atom-1	Atom-2	Interatomic distance (Å)	Clash overlap (Å)
1:B:143:LEU:HD22	1:B:192:PHE:CD2	2.54	0.41
1:B:183:THR:HG1	1:B:228:PHE:HE2	1.67	0.41
1:B:51:PHE:CE1	1:B:107:GLN:HB2	2.54	0.41
1:A:130:LEU:HD11	1:A:210:HIS:CG	2.55	0.41
1:A:129:ARG:NH2	1:A:178:ARG:HG2	2.36	0.40
1:A:230:PRO:HB2	1:A:233:GLN:HG3	2.03	0.40
1:A:129:ARG:HH22	1:A:178:ARG:C	2.22	0.40

All (4) symmetry-related close contacts are listed below. The label for Atom-2 includes the symmetry operator and encoded unit-cell translations to be applied.

Atom-1	Atom-2	Interatomic distance (Å)	Clash overlap (Å)
4:A:2042:HOH:O	4:B:2020:HOH:O[7_555]	1.60	0.60
1:A:147:ARG:NH2	1:A:147:ARG:NH2[7_555]	1.71	0.49
4:B:2057:HOH:O	4:B:2057:HOH:O[5_655]	2.00	0.20
4:A:2042:HOH:O	4:B:2007:HOH:O[7_555]	2.03	0.17

5.3 Torsion angles [i](#)

5.3.1 Protein backbone [i](#)

In the following table, the Percentiles column shows the percent Ramachandran outliers of the chain as a percentile score with respect to all X-ray entries followed by that with respect to entries of similar resolution.

The Analysed column shows the number of residues for which the backbone conformation was analysed, and the total number of residues.

Mol	Chain	Analysed	Favoured	Allowed	Outliers	Percentiles	
1	A	216/218 (99%)	204 (94%)	10 (5%)	2 (1%)	17	11
1	B	216/218 (99%)	195 (90%)	17 (8%)	4 (2%)	8	3
All	All	432/436 (99%)	399 (92%)	27 (6%)	6 (1%)	11	5

All (6) Ramachandran outliers are listed below:

Mol	Chain	Res	Type
1	A	147	ARG
1	B	147	ARG
1	B	36	ARG

Continued on next page...

Continued from previous page...

Mol	Chain	Res	Type
1	A	149	ARG
1	B	24	PRO
1	B	149	ARG

5.3.2 Protein sidechains [i](#)

In the following table, the Percentiles column shows the percent sidechain outliers of the chain as a percentile score with respect to all X-ray entries followed by that with respect to entries of similar resolution.

The Analysed column shows the number of residues for which the sidechain conformation was analysed, and the total number of residues.

Mol	Chain	Analysed	Rotameric	Outliers	Percentiles
1	A	172/172 (100%)	158 (92%)	14 (8%)	11 7
1	B	172/172 (100%)	161 (94%)	11 (6%)	17 13
All	All	344/344 (100%)	319 (93%)	25 (7%)	14 9

All (25) residues with a non-rotameric sidechain are listed below:

Mol	Chain	Res	Type
1	A	21	ARG
1	A	36	ARG
1	A	53	MET
1	A	76	ARG
1	A	91	ASN
1	A	128	ARG
1	A	132	ASN
1	A	147	ARG
1	A	149	ARG
1	A	166	SER
1	A	186	ARG
1	A	195	SER
1	A	228	PHE
1	A	243	GLN
1	B	34	GLN
1	B	68	LEU
1	B	123	LEU
1	B	132	ASN
1	B	144	LEU
1	B	147	ARG

Continued on next page...

Continued from previous page...

Mol	Chain	Res	Type
1	B	153	SER
1	B	164	VAL
1	B	165	THR
1	B	187	ARG
1	B	208	LEU

Sometimes sidechains can be flipped to improve hydrogen bonding and reduce clashes. All (19) such sidechains are listed below:

Mol	Chain	Res	Type
1	A	34	GLN
1	A	62(A)	ASN
1	A	91	ASN
1	A	101	ASN
1	A	117	ASN
1	A	119	GLN
1	A	132	ASN
1	A	135	GLN
1	A	188	GLN
1	A	236	ASN
1	B	34	GLN
1	B	71	HIS
1	B	86	GLN
1	B	101	ASN
1	B	132	ASN
1	B	135	GLN
1	B	188	GLN
1	B	210	HIS
1	B	236	ASN

5.3.3 RNA [i](#)

There are no RNA molecules in this entry.

5.4 Non-standard residues in protein, DNA, RNA chains [i](#)

There are no non-standard protein/DNA/RNA residues in this entry.

5.5 Carbohydrates [i](#)

8 monosaccharides are modelled in this entry.

In the following table, the Counts columns list the number of bonds (or angles) for which Mogul statistics could be retrieved, the number of bonds (or angles) that are observed in the model and the number of bonds (or angles) that are defined in the Chemical Component Dictionary. The Link column lists molecule types, if any, to which the group is linked. The Z score for a bond length (or angle) is the number of standard deviations the observed value is removed from the expected value. A bond length (or angle) with $|Z| > 2$ is considered an outlier worth inspection. RMSZ is the root-mean-square of all Z scores of the bond lengths (or angles).

Mol	Type	Chain	Res	Link	Bond lengths			Bond angles		
					Counts	RMSZ	# Z > 2	Counts	RMSZ	# Z > 2
2	NAG	C	1	1,2	14,14,15	0.64	0	17,19,21	1.69	4 (23%)
2	FUC	C	2	2	10,10,11	0.98	0	14,14,16	1.70	4 (28%)
2	NAG	D	1	1,2	14,14,15	0.82	1 (7%)	17,19,21	2.01	5 (29%)
2	FUC	D	2	2	10,10,11	0.69	0	14,14,16	2.40	4 (28%)
2	NAG	E	1	1,2	14,14,15	0.55	0	17,19,21	1.98	4 (23%)
2	FUC	E	2	2	10,10,11	0.64	0	14,14,16	1.37	3 (21%)
2	NAG	F	1	1,2	14,14,15	0.87	0	17,19,21	1.81	4 (23%)
2	FUC	F	2	2	10,10,11	0.87	0	14,14,16	1.83	2 (14%)

In the following table, the Chirals column lists the number of chiral outliers, the number of chiral centers analysed, the number of these observed in the model and the number defined in the Chemical Component Dictionary. Similar counts are reported in the Torsion and Rings columns. '-' means no outliers of that kind were identified.

Mol	Type	Chain	Res	Link	Chirals	Torsions	Rings
2	NAG	C	1	1,2	-	0/6/23/26	0/1/1/1
2	FUC	C	2	2	-	-	0/1/1/1
2	NAG	D	1	1,2	-	3/6/23/26	0/1/1/1
2	FUC	D	2	2	-	-	0/1/1/1
2	NAG	E	1	1,2	-	2/6/23/26	0/1/1/1
2	FUC	E	2	2	-	-	0/1/1/1
2	NAG	F	1	1,2	-	2/6/23/26	0/1/1/1
2	FUC	F	2	2	-	-	0/1/1/1

All (1) bond length outliers are listed below:

Mol	Chain	Res	Type	Atoms	Z	Observed(Å)	Ideal(Å)
2	D	1	NAG	C1-C2	2.50	1.56	1.52

All (30) bond angle outliers are listed below:

Mol	Chain	Res	Type	Atoms	Z	Observed(°)	Ideal(°)
2	D	2	FUC	C1-C2-C3	-5.88	102.44	109.67
2	E	1	NAG	O5-C1-C2	-5.15	103.16	111.29
2	F	2	FUC	C1-C2-C3	-5.10	103.39	109.67
2	D	1	NAG	C3-C4-C5	-4.94	101.43	110.24
2	F	1	NAG	C1-O5-C5	4.82	118.73	112.19
2	D	1	NAG	O5-C1-C2	-3.95	105.05	111.29
2	D	2	FUC	C2-C3-C4	-3.94	104.07	110.89
2	E	1	NAG	C1-O5-C5	3.77	117.31	112.19
2	C	1	NAG	C4-C3-C2	-3.51	105.87	111.02
2	C	1	NAG	C1-C2-N2	3.33	116.18	110.49
2	C	2	FUC	C1-C2-C3	3.29	113.71	109.67
2	D	1	NAG	O5-C5-C6	3.20	112.22	107.20
2	F	2	FUC	C2-C3-C4	-3.20	105.36	110.89
2	D	2	FUC	O3-C3-C2	3.18	116.09	109.99
2	E	2	FUC	C1-C2-C3	3.18	113.57	109.67
2	F	1	NAG	C3-C4-C5	-3.16	104.60	110.24
2	C	2	FUC	C3-C4-C5	-2.85	105.33	109.77
2	C	2	FUC	O4-C4-C5	2.85	115.97	109.67
2	D	2	FUC	O2-C2-C3	2.74	115.63	110.14
2	F	1	NAG	O4-C4-C5	2.65	115.87	109.30
2	C	1	NAG	O5-C5-C6	2.28	110.77	107.20
2	D	1	NAG	O4-C4-C5	2.26	114.90	109.30
2	C	1	NAG	C1-O5-C5	-2.24	109.15	112.19
2	F	1	NAG	O3-C3-C4	-2.24	105.17	110.35
2	D	1	NAG	C1-O5-C5	2.23	115.22	112.19
2	C	2	FUC	O2-C2-C3	-2.13	105.88	110.14
2	E	1	NAG	O5-C5-C6	2.12	110.53	107.20
2	E	2	FUC	O5-C1-C2	-2.09	107.55	110.77
2	E	1	NAG	C1-C2-N2	2.07	114.02	110.49
2	E	2	FUC	O5-C5-C4	2.03	113.17	109.52

There are no chirality outliers.

All (7) torsion outliers are listed below:

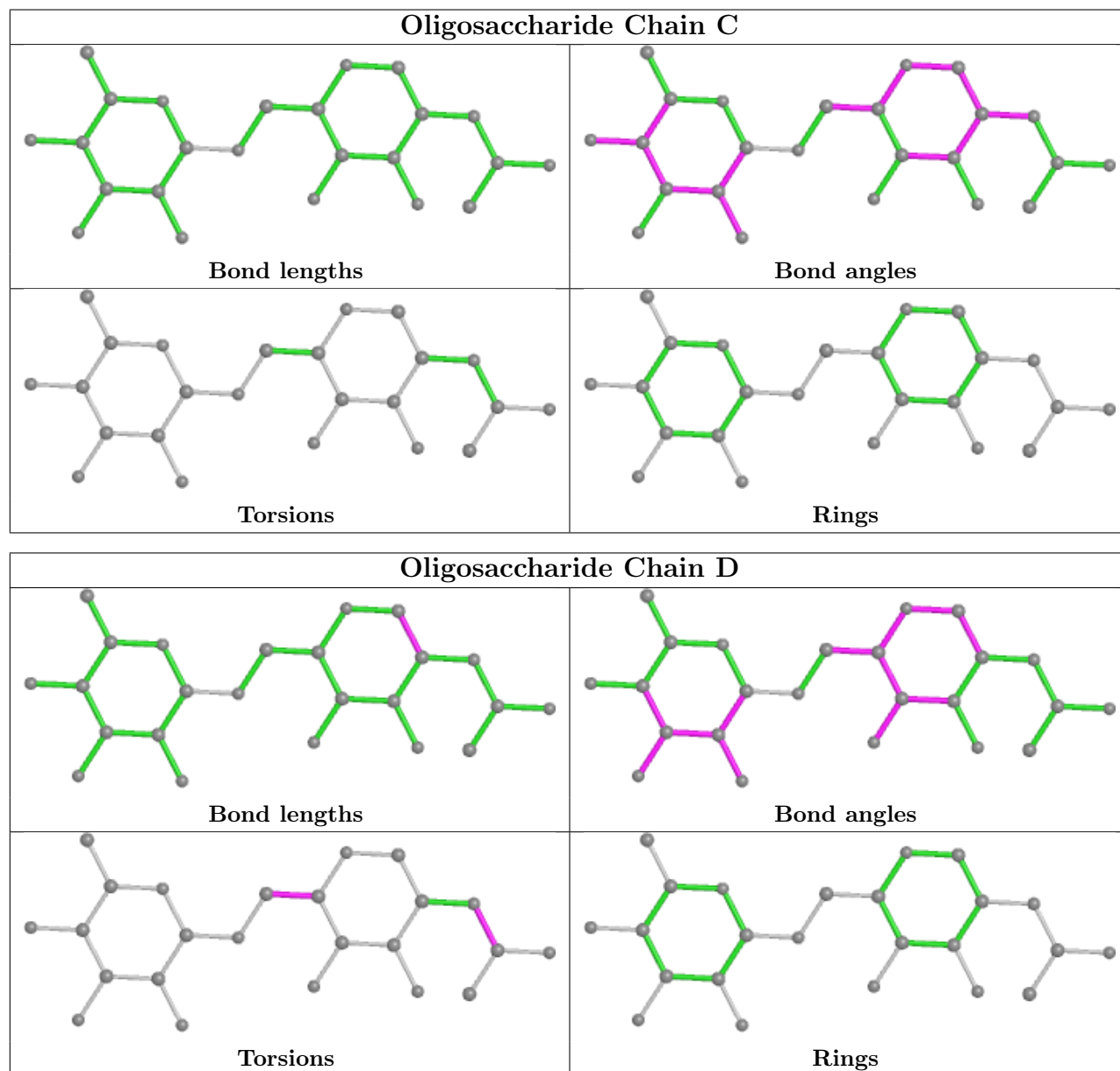
Mol	Chain	Res	Type	Atoms
2	F	1	NAG	C8-C7-N2-C2
2	F	1	NAG	O7-C7-N2-C2
2	D	1	NAG	C8-C7-N2-C2
2	D	1	NAG	O7-C7-N2-C2
2	E	1	NAG	O5-C5-C6-O6
2	E	1	NAG	C4-C5-C6-O6
2	D	1	NAG	O5-C5-C6-O6

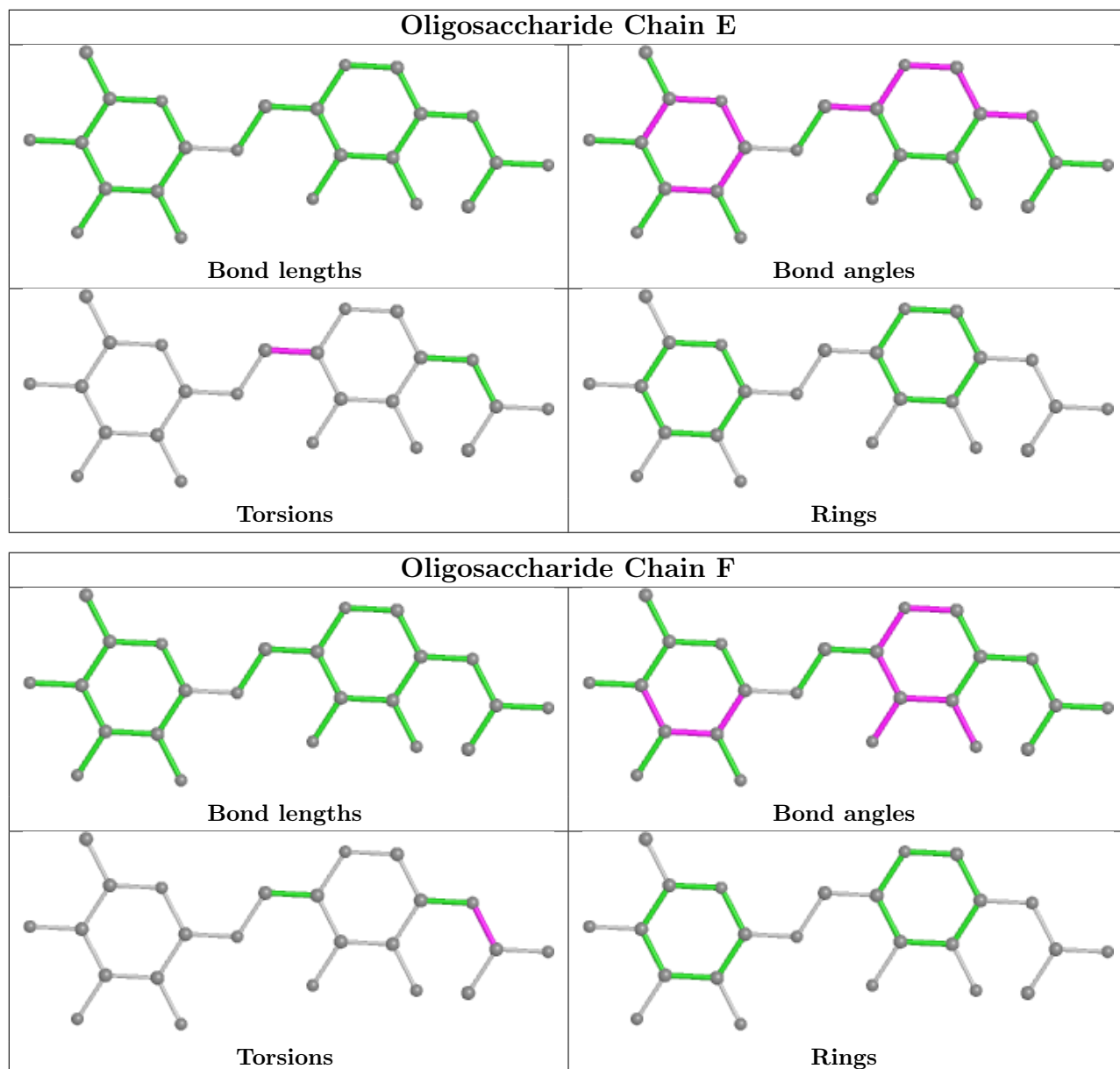
There are no ring outliers.

2 monomers are involved in 3 short contacts:

Mol	Chain	Res	Type	Clashes	Symm-Clashes
2	C	2	FUC	1	0
2	D	1	NAG	2	0

The following is a two-dimensional graphical depiction of Mogul quality analysis of bond lengths, bond angles, torsion angles, and ring geometry for oligosaccharide.





5.6 Ligand geometry [i](#)

2 ligands are modelled in this entry.

In the following table, the Counts columns list the number of bonds (or angles) for which Mogul statistics could be retrieved, the number of bonds (or angles) that are observed in the model and the number of bonds (or angles) that are defined in the Chemical Component Dictionary. The Link column lists molecule types, if any, to which the group is linked. The Z score for a bond length (or angle) is the number of standard deviations the observed value is removed from the expected value. A bond length (or angle) with $|Z| > 2$ is considered an outlier worth inspection. RMSZ is the root-mean-square of all Z scores of the bond lengths (or angles).

Mol	Type	Chain	Res	Link	Bond lengths			Bond angles		
					Counts	RMSZ	# Z > 2	Counts	RMSZ	# Z > 2
3	151	B	400	1	25,31,32	2.97	8 (32%)	29,45,47	2.62	11 (37%)
3	151	A	400	1	25,31,32	2.59	7 (28%)	29,45,47	2.50	11 (37%)

In the following table, the Chirals column lists the number of chiral outliers, the number of chiral centers analysed, the number of these observed in the model and the number defined in the Chemical Component Dictionary. Similar counts are reported in the Torsion and Rings columns. '-' means no outliers of that kind were identified.

Mol	Type	Chain	Res	Link	Chirals	Torsions	Rings
3	151	B	400	1	-	2/21/47/49	0/3/3/3
3	151	A	400	1	-	2/21/47/49	0/3/3/3

All (15) bond length outliers are listed below:

Mol	Chain	Res	Type	Atoms	Z	Observed(Å)	Ideal(Å)
3	B	400	151	C4-C2	-9.17	1.34	1.50
3	A	400	151	C4-C2	-7.40	1.37	1.50
3	A	400	151	O2-S1	5.70	1.53	1.43
3	B	400	151	O1-S1	5.58	1.53	1.43
3	B	400	151	O2-S1	5.53	1.53	1.43
3	B	400	151	S1-N2	4.93	1.72	1.62
3	A	400	151	S1-N2	4.54	1.71	1.62
3	A	400	151	O1-S1	3.91	1.50	1.43
3	A	400	151	C7-C30	3.22	1.55	1.50
3	B	400	151	C9-C5	-3.05	1.47	1.51
3	B	400	151	C29-N2	-2.96	1.42	1.47
3	A	400	151	C29-N2	-2.94	1.42	1.47
3	B	400	151	C7-C30	2.86	1.54	1.50
3	A	400	151	C8-N1	-2.21	1.44	1.47
3	B	400	151	C3-S1	2.18	1.80	1.75

All (22) bond angle outliers are listed below:

Mol	Chain	Res	Type	Atoms	Z	Observed(°)	Ideal(°)
3	B	400	151	C12-N4-C11	6.86	110.72	104.04
3	A	400	151	O2-S1-O1	-6.17	109.99	118.85
3	B	400	151	O2-S1-N2	-6.09	97.93	107.23
3	A	400	151	O1-S1-C3	5.82	117.63	108.28
3	B	400	151	O2-S1-O1	-4.71	112.08	118.85
3	A	400	151	O1-S1-N2	-4.53	100.32	107.23
3	A	400	151	C29-C8-N1	-4.45	96.67	102.58

Continued on next page...

Continued from previous page...

Mol	Chain	Res	Type	Atoms	Z	Observed(°)	Ideal(°)
3	A	400	151	C3-S1-N2	4.16	114.94	107.13
3	B	400	151	O1-S1-C3	3.89	114.52	108.28
3	B	400	151	O2-S1-C3	3.72	114.25	108.28
3	B	400	151	C1-C27-C7	-3.68	104.91	111.74
3	B	400	151	C4-C2-N1	-3.26	116.01	119.76
3	B	400	151	O5-C30-C7	2.59	131.79	125.23
3	B	400	151	C5-C9-N4	2.46	116.98	113.48
3	B	400	151	C29-C8-N1	-2.45	99.32	102.58
3	A	400	151	C14-C13-C11	-2.45	98.27	105.19
3	A	400	151	C12-N4-C11	2.45	106.42	104.04
3	A	400	151	C1-C27-C7	-2.36	107.36	111.74
3	A	400	151	C6-C4-C2	-2.16	120.87	128.43
3	B	400	151	C28-C26-N1	-2.09	101.18	103.33
3	A	400	151	C9-N4-C12	-2.03	110.22	113.18
3	A	400	151	C9-N4-C11	2.01	116.11	113.18

There are no chirality outliers.

All (4) torsion outliers are listed below:

Mol	Chain	Res	Type	Atoms
3	A	400	151	C29-N2-S1-C3
3	A	400	151	C29-N2-S1-O2
3	B	400	151	C29-N2-S1-C3
3	B	400	151	C29-N2-S1-O2

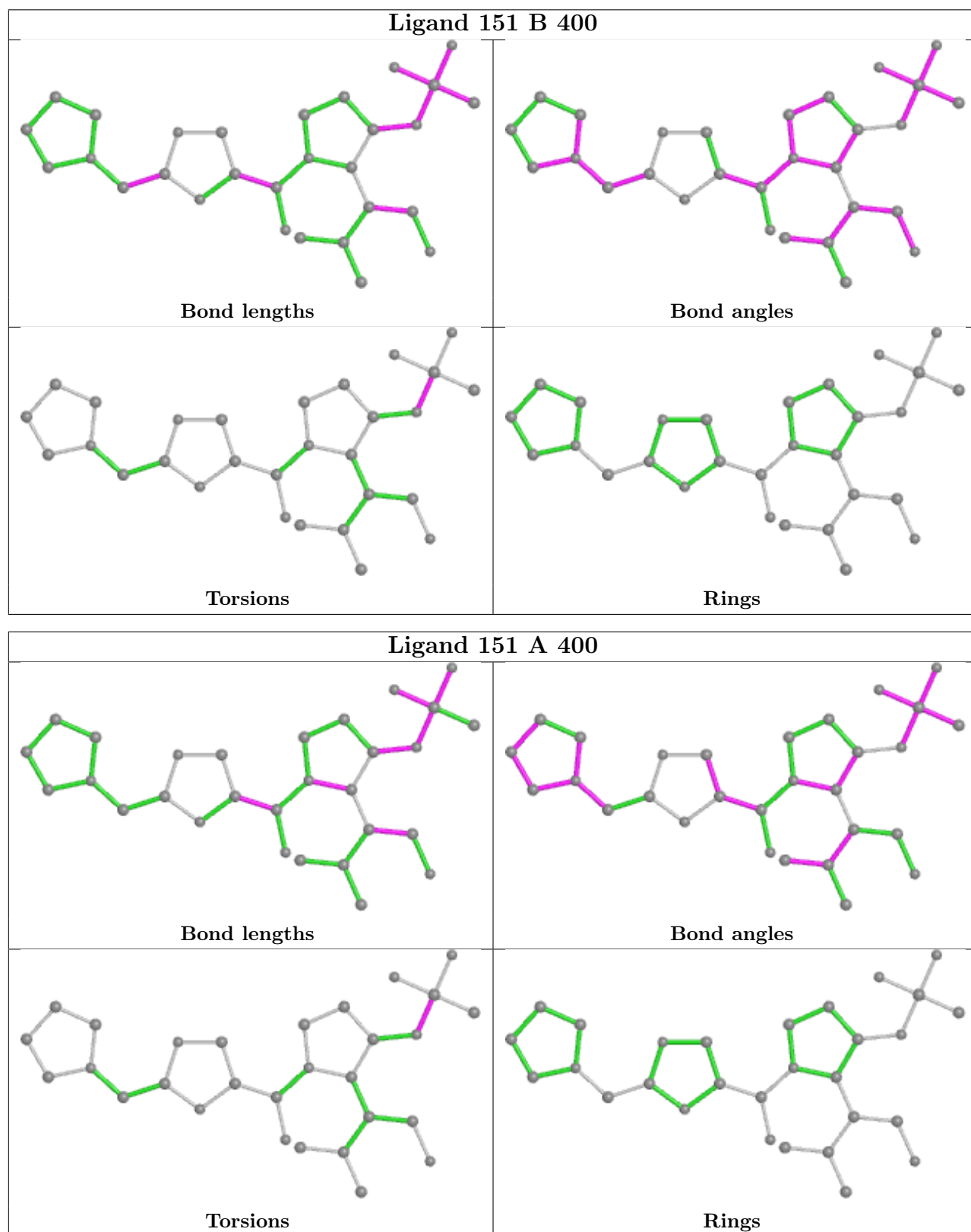
There are no ring outliers.

2 monomers are involved in 6 short contacts:

Mol	Chain	Res	Type	Clashes	Symm-Clashes
3	B	400	151	1	0
3	A	400	151	5	0

The following is a two-dimensional graphical depiction of Mogul quality analysis of bond lengths, bond angles, torsion angles, and ring geometry for all instances of the Ligand of Interest. In addition, ligands with molecular weight > 250 and outliers as shown on the validation Tables will also be included. For torsion angles, if less than 5% of the Mogul distribution of torsion angles is within 10 degrees of the torsion angle in question, then that torsion angle is considered an outlier. Any bond that is central to one or more torsion angles identified as an outlier by Mogul will be highlighted in the graph. For rings, the root-mean-square deviation (RMSD) between the ring in question and similar rings identified by Mogul is calculated over all ring torsion angles. If the average RMSD is greater than 60 degrees and the minimal RMSD between the ring in question and any Mogul-identified rings is also greater than 60 degrees, then that ring is considered an outlier.

The outliers are highlighted in purple. The color gray indicates Mogul did not find sufficient equivalents in the CSD to analyse the geometry.



5.7 Other polymers [i](#)

There are no such residues in this entry.

5.8 Polymer linkage issues [i](#)

There are no chain breaks in this entry.

6 Fit of model and data [i](#)

6.1 Protein, DNA and RNA chains [i](#)

EDS was not executed - this section is therefore empty.

6.2 Non-standard residues in protein, DNA, RNA chains [i](#)

EDS was not executed - this section is therefore empty.

6.3 Carbohydrates [i](#)

EDS was not executed - this section is therefore empty.

6.4 Ligands [i](#)

EDS was not executed - this section is therefore empty.

6.5 Other polymers [i](#)

EDS was not executed - this section is therefore empty.