



Full wwPDB X-ray Structure Validation Report ⓘ

Jun 12, 2024 – 01:18 AM EDT

PDB ID : 1FUE
Title : FLAVODOXIN FROM HELICOBACTER PYLORI
Authors : Freigang, J.; Diederichs, K.; Schaefer, K.P.; Welte, W.; Paul, R.
Deposited on : 2000-09-15
Resolution : 2.40 Å(reported)

This is a Full wwPDB X-ray Structure Validation Report for a publicly released PDB entry.

We welcome your comments at validation@mail.wwpdb.org

A user guide is available at

<https://www.wwpdb.org/validation/2017/XrayValidationReportHelp>

with specific help available everywhere you see the ⓘ symbol.

The types of validation reports are described at

<http://www.wwpdb.org/validation/2017/FAQs#types>.

The following versions of software and data (see [references ⓘ](#)) were used in the production of this report:

MolProbity	:	4.02b-467
Mogul	:	2022.3.0, CSD as543be (2022)
Xtriage (Phenix)	:	NOT EXECUTED
EDS	:	NOT EXECUTED
buster-report	:	1.1.7 (2018)
Percentile statistics	:	20191225.v01 (using entries in the PDB archive December 25th 2019)
Ideal geometry (proteins)	:	Engh & Huber (2001)
Ideal geometry (DNA, RNA)	:	Parkinson et al. (1996)
Validation Pipeline (wwPDB-VP)	:	2.36.2

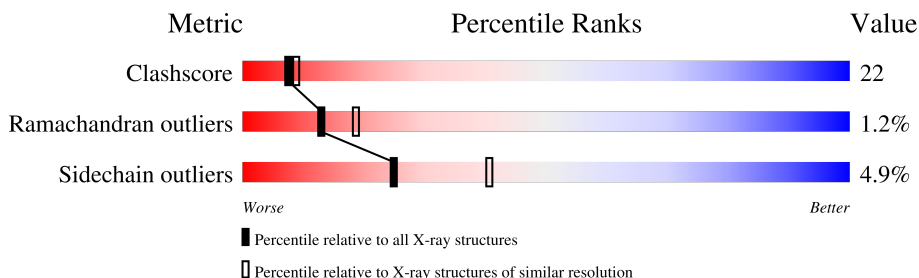
1 Overall quality at a glance

The following experimental techniques were used to determine the structure:

X-RAY DIFFRACTION

The reported resolution of this entry is 2.40 Å.

Percentile scores (ranging between 0-100) for global validation metrics of the entry are shown in the following graphic. The table shows the number of entries on which the scores are based.



Metric	Whole archive (#Entries)	Similar resolution (#Entries, resolution range(Å))
Clashscore	141614	4398 (2.40-2.40)
Ramachandran outliers	138981	4318 (2.40-2.40)
Sidechain outliers	138945	4319 (2.40-2.40)

The table below summarises the geometric issues observed across the polymeric chains and their fit to the electron density. The red, orange, yellow and green segments of the lower bar indicate the fraction of residues that contain outliers for ≥ 3 , 2, 1 and 0 types of geometric quality criteria respectively. A grey segment represents the fraction of residues that are not modelled. The numeric value for each fraction is indicated below the corresponding segment, with a dot representing fractions $\leq 5\%$.

Note EDS was not executed.

Mol	Chain	Length	Quality of chain
1	A	163	

2 Entry composition [i](#)

There are 3 unique types of molecules in this entry. The entry contains 1285 atoms, of which 0 are hydrogens and 0 are deuteriums.

In the tables below, the ZeroOcc column contains the number of atoms modelled with zero occupancy, the AltConf column contains the number of residues with at least one atom in alternate conformation and the Trace column contains the number of residues modelled with at most 2 atoms.

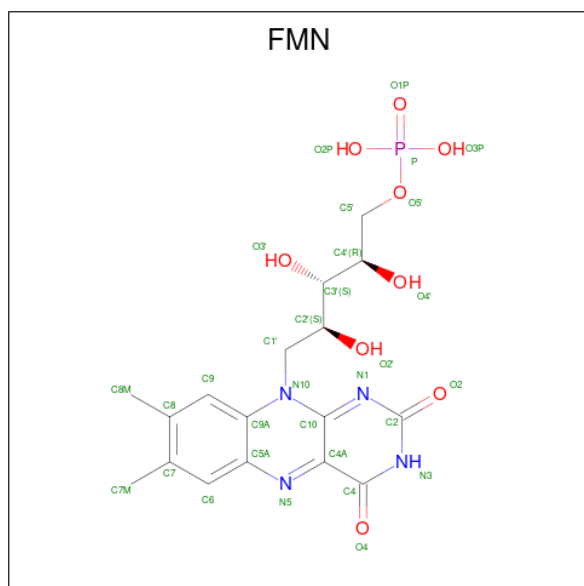
- Molecule 1 is a protein called FLAVODOXIN.

Mol	Chain	Residues	Atoms				ZeroOcc	AltConf	Trace
			Total	C	N	O			
1	A	163	1222	773	199	250	0	0	0

There are 4 discrepancies between the modelled and reference sequences:

Chain	Residue	Modelled	Actual	Comment	Reference
A	32	VAL	ILE	See remark 999	UNP Q9ZK53
A	117	SER	PRO	See remark 999	UNP Q9ZK53
A	124	ALA	GLU	See remark 999	UNP Q9ZK53
A	160	ARG	LYS	See remark 999	UNP Q9ZK53

- Molecule 2 is FLAVIN MONONUCLEOTIDE (three-letter code: FMN) (formula: C₁₇H₂₁N₄O₉P).



Mol	Chain	Residues	Atoms					ZeroOcc	AltConf
			Total	C	N	O	P		
2	A	1	31	17	4	9	1	0	0

- Molecule 3 is water.

Mol	Chain	Residues	Atoms		ZeroOcc	AltConf
3	A	32	Total 32	O 32	0	0

Note EDS was not executed.

- Molecule 1: FLAVODOXIN

F96	G2
A97	K3
E98	I4
G99	G5
I100	I6
F101	
H102	T10
I103	D11
I104	S12
E105	G13
	I14
	A15
	I18
	K21
	I28
	V34
	E40
F134	F45
V135	I46
G136	K47
V138	V48
I139	I49
D140	
E141	L50
	V51
	A52
T148	P53
D149	P54
E150	T54
E151	A55
I152	G56
	A57
V156	L60
	G61
V159	T62
R160	D63
	V64
	E65
F163	
A164	E72
	N78
	L83
	V84
	G85
	L86
	G87
	D88
	Q89
	Y92
	S93
	E94
	T95

4 Data and refinement statistics

Xtriage (Phenix) and EDS were not executed - this section is therefore incomplete.

Property	Value	Source
Space group	P 1 21 1	Depositor
Cell constants a, b, c, α , β , γ	31.13Å 47.22Å 48.31Å 90.00° 97.14° 90.00°	Depositor
Resolution (Å)	18.76 – 2.40	Depositor
% Data completeness (in resolution range)	93.1 (18.76-2.40)	Depositor
R_{merge}	0.09	Depositor
R_{sym}	(Not available)	Depositor
Refinement program	CNS	Depositor
R, R_{free}	0.198 , 0.270	Depositor
Estimated twinning fraction	No twinning to report.	Xtriage
Total number of atoms	1285	wwPDB-VP
Average B, all atoms (Å ²)	37.0	wwPDB-VP

5 Model quality [i](#)

5.1 Standard geometry [i](#)

Bond lengths and bond angles in the following residue types are not validated in this section: FMN

The Z score for a bond length (or angle) is the number of standard deviations the observed value is removed from the expected value. A bond length (or angle) with $|Z| > 5$ is considered an outlier worth inspection. RMSZ is the root-mean-square of all Z scores of the bond lengths (or angles).

Mol	Chain	Bond lengths		Bond angles	
		RMSZ	$\# Z > 5$	RMSZ	$\# Z > 5$
1	A	0.36	0/1242	0.59	0/1676

There are no bond length outliers.

There are no bond angle outliers.

There are no chirality outliers.

There are no planarity outliers.

5.2 Too-close contacts [i](#)

In the following table, the Non-H and H(model) columns list the number of non-hydrogen atoms and hydrogen atoms in the chain respectively. The H(added) column lists the number of hydrogen atoms added and optimized by MolProbity. The Clashes column lists the number of clashes within the asymmetric unit, whereas Symm-Clashes lists symmetry-related clashes.

Mol	Chain	Non-H	H(model)	H(added)	Clashes	Symm-Clashes
1	A	1222	0	1176	54	0
2	A	31	0	19	2	0
3	A	32	0	0	3	0
All	All	1285	0	1195	54	0

The all-atom clashscore is defined as the number of clashes found per 1000 atoms (including hydrogen atoms). The all-atom clashscore for this structure is 22.

All (54) close contacts within the same asymmetric unit are listed below, sorted by their clash magnitude.

Atom-1	Atom-2	Interatomic distance (Å)	Clash overlap (Å)
1:A:60:LEU:HB3	1:A:65:GLU:HG3	1.66	0.78

Continued on next page...

Continued from previous page...

Atom-1	Atom-2	Interatomic distance (Å)	Clash overlap (Å)
1:A:94:GLU:HG2	1:A:124:ALA:HB3	1.66	0.75
1:A:95:THR:HG22	1:A:95:THR:O	1.86	0.74
1:A:88:ASP:HB3	1:A:92:TYR:HD2	1.60	0.67
1:A:156:VAL:O	1:A:160:ARG:HB2	1.94	0.66
1:A:12:SER:HB2	2:A:165:FMN:O1P	1.98	0.64
1:A:54:THR:OG1	1:A:97:ALA:HA	2.00	0.61
1:A:116:THR:O	1:A:134:PHE:HB2	2.01	0.60
1:A:48:VAL:HG12	1:A:50:LEU:CD1	2.31	0.60
1:A:60:LEU:CB	1:A:65:GLU:HG3	2.31	0.60
1:A:40:GLU:CD	1:A:40:GLU:H	2.05	0.60
1:A:105:GLU:HA	1:A:105:GLU:OE1	2.03	0.59
1:A:152:ILE:O	1:A:156:VAL:HG23	2.02	0.59
1:A:83:LEU:HB3	1:A:100:ILE:HD12	1.84	0.59
1:A:89:GLN:HG2	1:A:140:ASP:OD2	2.03	0.58
1:A:53:PRO:HA	1:A:86:LEU:HB2	1.86	0.57
1:A:5:GLY:O	1:A:48:VAL:HG13	2.05	0.57
1:A:141:GLU:HB3	3:A:216:HOH:O	2.05	0.57
1:A:51:VAL:HA	1:A:84:VAL:O	2.09	0.53
1:A:127:LYS:HA	3:A:223:HOH:O	2.08	0.53
1:A:61:GLN:OE1	1:A:63:ASP:HB2	2.09	0.53
1:A:56:GLY:O	1:A:57:ALA:HB3	2.08	0.52
1:A:159:VAL:HG11	1:A:163:PHE:HE1	1.77	0.49
1:A:53:PRO:HG2	1:A:61:GLN:HB2	1.93	0.49
1:A:88:ASP:HB3	1:A:92:TYR:CD2	2.44	0.49
1:A:139:ILE:HD12	1:A:148:THR:HG23	1.96	0.48
1:A:47:LYS:HE3	1:A:164:ALA:O	2.14	0.48
1:A:10:THR:HB	1:A:15:ALA:HB3	1.95	0.48
1:A:101:PHE:O	1:A:104:TYR:HB3	2.14	0.47
1:A:47:LYS:HE3	1:A:164:ALA:H	1.79	0.47
1:A:86:LEU:HD23	1:A:139:ILE:HB	1.96	0.46
1:A:78:ASN:HB3	3:A:201:HOH:O	2.15	0.46
1:A:21:LYS:HD3	1:A:149:ASP:OD1	2.15	0.46
1:A:2:GLY:N	1:A:28:ASN:C	2.69	0.46
1:A:159:VAL:CG1	1:A:163:PHE:HE1	2.29	0.46
1:A:60:LEU:HG	1:A:64:TRP:HB3	1.98	0.46
1:A:94:GLU:O	1:A:95:THR:OG1	2.30	0.46
1:A:98:GLU:OE2	1:A:126:SER:HA	2.16	0.46
1:A:47:LYS:CE	1:A:164:ALA:H	2.30	0.45
1:A:83:LEU:HD13	1:A:100:ILE:HG23	1.99	0.45
1:A:50:LEU:HD23	1:A:103:ILE:HG21	1.98	0.45
1:A:47:LYS:HE3	1:A:164:ALA:C	2.37	0.44

Continued on next page...

Continued from previous page...

Atom-1	Atom-2	Interatomic distance (Å)	Clash overlap (Å)
1:A:150:GLU:HG3	1:A:151:ARG:N	2.33	0.44
1:A:3:LYS:O	1:A:45:PHE:HD2	2.01	0.44
1:A:6:ILE:HG12	1:A:49:ILE:HB	2.00	0.43
1:A:50:LEU:HG	1:A:64:TRP:CH2	2.54	0.43
1:A:95:THR:O	1:A:95:THR:CG2	2.58	0.43
1:A:115:GLN:OE1	1:A:115:GLN:N	2.44	0.43
1:A:14:ASN:O	1:A:18:ILE:HG12	2.19	0.42
1:A:34:VAL:HG23	1:A:63:ASP:HB3	2.00	0.42
1:A:84:VAL:HG22	1:A:137:LEU:HB3	2.01	0.42
1:A:21:LYS:HD2	1:A:152:ILE:HD12	2.00	0.42
1:A:83:LEU:HD12	1:A:135:VAL:HG12	2.02	0.41
1:A:88:ASP:HB2	2:A:165:FMN:H1'1	2.03	0.40

There are no symmetry-related clashes.

5.3 Torsion angles [i](#)

5.3.1 Protein backbone [i](#)

In the following table, the Percentiles column shows the percent Ramachandran outliers of the chain as a percentile score with respect to all X-ray entries followed by that with respect to entries of similar resolution.

The Analysed column shows the number of residues for which the backbone conformation was analysed, and the total number of residues.

Mol	Chain	Analysed	Favoured	Allowed	Outliers	Percentiles	
1	A	161/163 (99%)	150 (93%)	9 (6%)	2 (1%)	13	19

All (2) Ramachandran outliers are listed below:

Mol	Chain	Res	Type
1	A	95	THR
1	A	126	SER

5.3.2 Protein sidechains [i](#)

In the following table, the Percentiles column shows the percent sidechain outliers of the chain as a percentile score with respect to all X-ray entries followed by that with respect to entries of similar resolution.

The Analysed column shows the number of residues for which the sidechain conformation was analysed, and the total number of residues.

Mol	Chain	Analysed	Rotameric	Outliers	Percentiles	
1	A	123/123 (100%)	117 (95%)	6 (5%)	25	40

All (6) residues with a non-rotameric sidechain are listed below:

Mol	Chain	Res	Type
1	A	50	LEU
1	A	51	VAL
1	A	60	LEU
1	A	72	GLU
1	A	130	GLU
1	A	134	PHE

Sometimes sidechains can be flipped to improve hydrogen bonding and reduce clashes. All (4) such sidechains are listed below:

Mol	Chain	Res	Type
1	A	14	ASN
1	A	28	ASN
1	A	41	GLN
1	A	158	GLN

5.3.3 RNA [i](#)

There are no RNA molecules in this entry.

5.4 Non-standard residues in protein, DNA, RNA chains [i](#)

There are no non-standard protein/DNA/RNA residues in this entry.

5.5 Carbohydrates [i](#)

There are no monosaccharides in this entry.

5.6 Ligand geometry [i](#)

1 ligand is modelled in this entry.

In the following table, the Counts columns list the number of bonds (or angles) for which Mogul statistics could be retrieved, the number of bonds (or angles) that are observed in the model and the number of bonds (or angles) that are defined in the Chemical Component Dictionary. The Link column lists molecule types, if any, to which the group is linked. The Z score for a bond length (or angle) is the number of standard deviations the observed value is removed from the expected value. A bond length (or angle) with $|Z| > 2$ is considered an outlier worth inspection. RMSZ is the root-mean-square of all Z scores of the bond lengths (or angles).

Mol	Type	Chain	Res	Link	Bond lengths			Bond angles		
					Counts	RMSZ	$\# Z > 2$	Counts	RMSZ	$\# Z > 2$
2	FMN	A	165	-	33,33,33	1.62	7 (21%)	48,50,50	1.12	3 (6%)

In the following table, the Chirals column lists the number of chiral outliers, the number of chiral centers analysed, the number of these observed in the model and the number defined in the Chemical Component Dictionary. Similar counts are reported in the Torsion and Rings columns. '-' means no outliers of that kind were identified.

Mol	Type	Chain	Res	Link	Chirals	Torsions	Rings
2	FMN	A	165	-	-	0/18/18/18	0/3/3/3

All (7) bond length outliers are listed below:

Mol	Chain	Res	Type	Atoms	Z	Observed(Å)	Ideal(Å)
2	A	165	FMN	C6-C5A	4.62	1.47	1.40
2	A	165	FMN	C8-C7	3.25	1.48	1.40
2	A	165	FMN	C9A-C5A	3.18	1.46	1.41
2	A	165	FMN	C2-N3	2.69	1.44	1.39
2	A	165	FMN	C7M-C7	2.20	1.55	1.51
2	A	165	FMN	O2-C2	-2.03	1.20	1.24
2	A	165	FMN	C6-C7	-2.02	1.36	1.39

All (3) bond angle outliers are listed below:

Mol	Chain	Res	Type	Atoms	Z	Observed(°)	Ideal(°)
2	A	165	FMN	C9-C9A-N10	3.08	126.00	121.85
2	A	165	FMN	C5A-C9A-N10	-3.03	115.23	117.97
2	A	165	FMN	C9A-C9-C8	2.16	123.56	119.22

There are no chirality outliers.

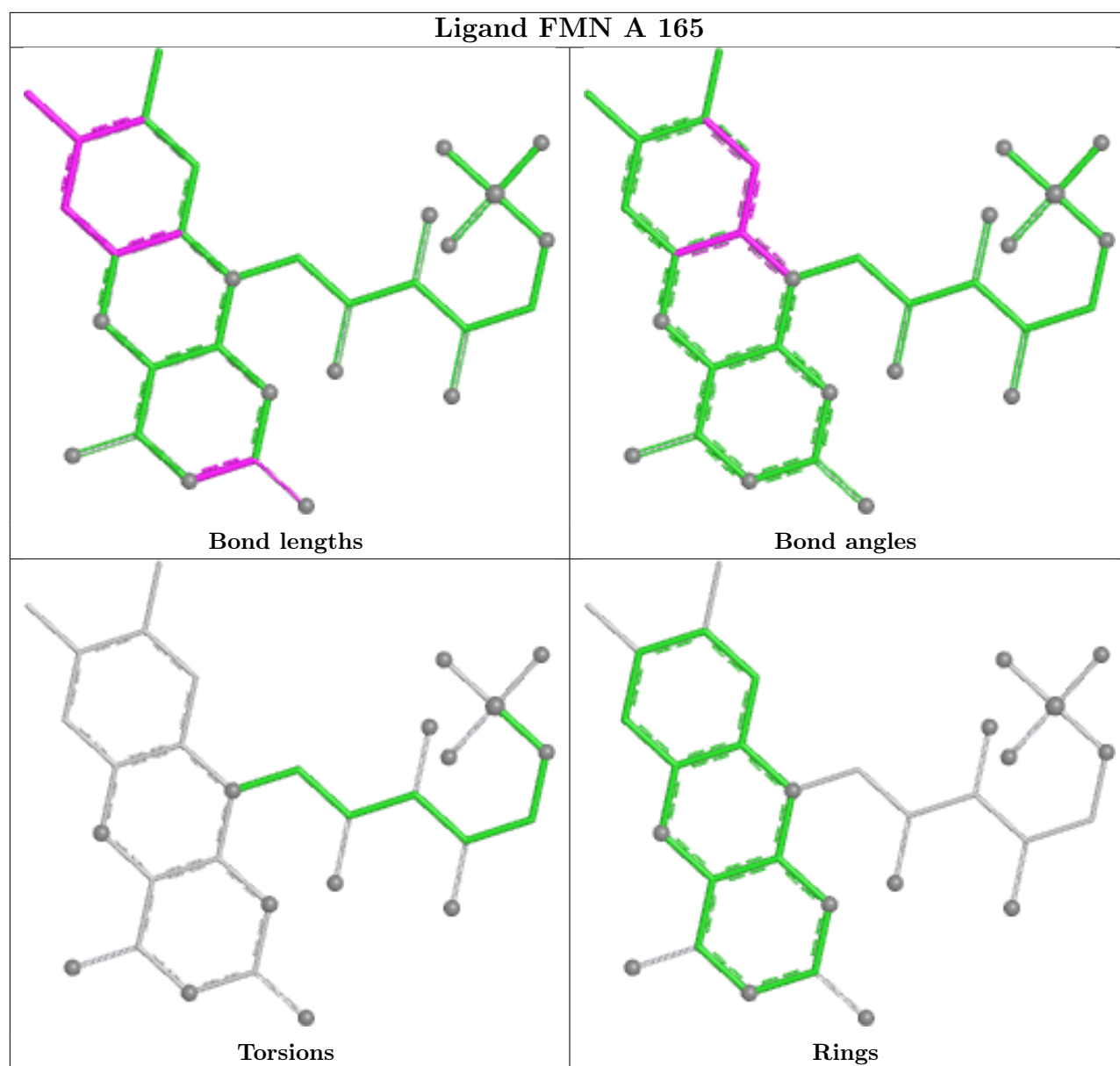
There are no torsion outliers.

There are no ring outliers.

1 monomer is involved in 2 short contacts:

Mol	Chain	Res	Type	Clashes	Symm-Clashes
2	A	165	FMN	2	0

The following is a two-dimensional graphical depiction of Mogul quality analysis of bond lengths, bond angles, torsion angles, and ring geometry for all instances of the Ligand of Interest. In addition, ligands with molecular weight > 250 and outliers as shown on the validation Tables will also be included. For torsion angles, if less than 5% of the Mogul distribution of torsion angles is within 10 degrees of the torsion angle in question, then that torsion angle is considered an outlier. Any bond that is central to one or more torsion angles identified as an outlier by Mogul will be highlighted in the graph. For rings, the root-mean-square deviation (RMSD) between the ring in question and similar rings identified by Mogul is calculated over all ring torsion angles. If the average RMSD is greater than 60 degrees and the minimal RMSD between the ring in question and any Mogul-identified rings is also greater than 60 degrees, then that ring is considered an outlier. The outliers are highlighted in purple. The color gray indicates Mogul did not find sufficient equivalents in the CSD to analyse the geometry.



5.7 Other polymers [i](#)

There are no such residues in this entry.

5.8 Polymer linkage issues [i](#)

There are no chain breaks in this entry.

6 Fit of model and data

6.1 Protein, DNA and RNA chains

EDS was not executed - this section is therefore empty.

6.2 Non-standard residues in protein, DNA, RNA chains

EDS was not executed - this section is therefore empty.

6.3 Carbohydrates

EDS was not executed - this section is therefore empty.

6.4 Ligands

EDS was not executed - this section is therefore empty.

6.5 Other polymers

EDS was not executed - this section is therefore empty.