



# Full wwPDB X-ray Structure Validation Report ⓘ

Jan 27, 2024 – 09:41 PM EST

PDB ID : 1DQ8  
Title : COMPLEX OF THE CATALYTIC PORTION OF HUMAN HMG-COA REDUCTASE WITH HMG AND COA  
Authors : Istvan, E.S.; Palnitkar, M.; Buchanan, S.K.; Deisenhofer, J.  
Deposited on : 1999-12-30  
Resolution : 2.10 Å(reported)

This is a Full wwPDB X-ray Structure Validation Report for a publicly released PDB entry.

We welcome your comments at [validation@mail.wwpdb.org](mailto:validation@mail.wwpdb.org)

A user guide is available at

<https://www.wwpdb.org/validation/2017/XrayValidationReportHelp>

with specific help available everywhere you see the ⓘ symbol.

The types of validation reports are described at

<http://www.wwpdb.org/validation/2017/FAQs#types>.

---

The following versions of software and data (see [references ⓘ](#)) were used in the production of this report:

MolProbity : 4.02b-467  
Mogul : 1.8.5 (274361), CSD as541be (2020)  
Xtriage (Phenix) : 1.13  
EDS : 2.36  
buster-report : 1.1.7 (2018)  
Percentile statistics : 20191225.v01 (using entries in the PDB archive December 25th 2019)  
Refmac : 5.8.0158  
CCP4 : 7.0.044 (Gargrove)  
Ideal geometry (proteins) : Engh & Huber (2001)  
Ideal geometry (DNA, RNA) : Parkinson et al. (1996)  
Validation Pipeline (wwPDB-VP) : 2.36

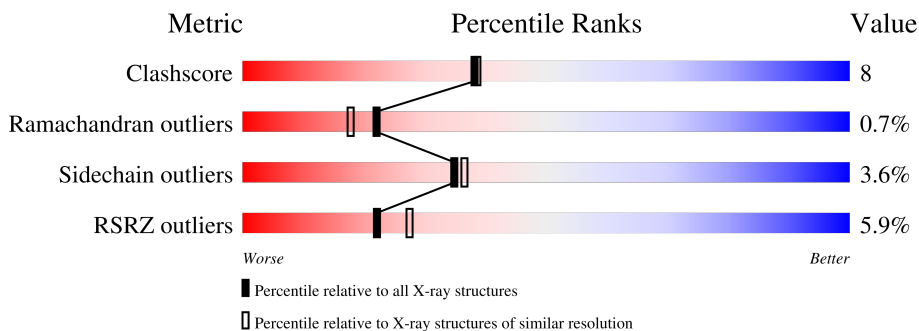
# 1 Overall quality at a glance

The following experimental techniques were used to determine the structure:

*X-RAY DIFFRACTION*

The reported resolution of this entry is 2.10 Å.

Percentile scores (ranging between 0-100) for global validation metrics of the entry are shown in the following graphic. The table shows the number of entries on which the scores are based.



Metric	Whole archive (#Entries)	Similar resolution (#Entries, resolution range(Å))
Clashscore	141614	5710 (2.10-2.10)
Ramachandran outliers	138981	5647 (2.10-2.10)
Sidechain outliers	138945	5648 (2.10-2.10)
RSRZ outliers	127900	5083 (2.10-2.10)

The table below summarises the geometric issues observed across the polymeric chains and their fit to the electron density. The red, orange, yellow and green segments of the lower bar indicate the fraction of residues that contain outliers for  $\geq 3$ , 2, 1 and 0 types of geometric quality criteria respectively. A grey segment represents the fraction of residues that are not modelled. The numeric value for each fraction is indicated below the corresponding segment, with a dot representing fractions  $\leq 5\%$ . The upper red bar (where present) indicates the fraction of residues that have poor fit to the electron density. The numeric value is given above the bar.

Mol	Chain	Length	Quality of chain
1	A	467	
1	B	467	
1	C	467	
1	D	467	

The following table lists non-polymeric compounds, carbohydrate monomers and non-standard residues in protein, DNA, RNA chains that are outliers for geometric or electron-density-fit criteria:

Mol	Type	Chain	Res	Chirality	Geometry	Clashes	Electron density
2	COA	A	100	X	-	-	-
2	COA	B	101	X	-	-	-
2	COA	C	102	X	-	-	-
2	COA	D	103	X	-	-	-
4	DTT	C	301	-	-	X	-

## 2 Entry composition

There are 5 unique types of molecules in this entry. The entry contains 12667 atoms, of which 0 are hydrogens and 0 are deuteriums.

In the tables below, the ZeroOcc column contains the number of atoms modelled with zero occupancy, the AltConf column contains the number of residues with at least one atom in alternate conformation and the Trace column contains the number of residues modelled with at most 2 atoms.

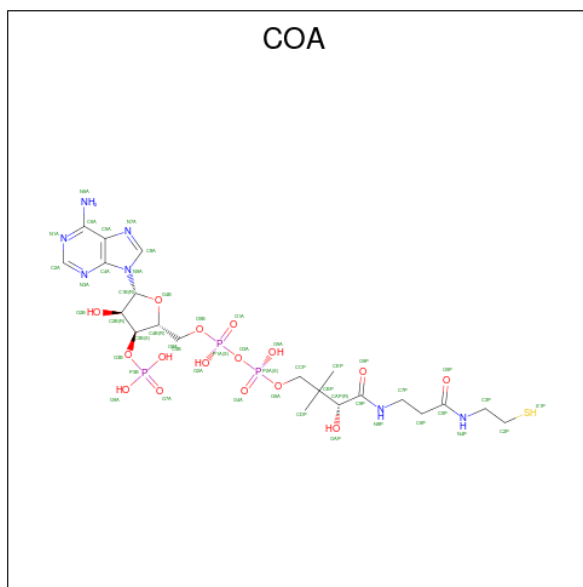
- Molecule 1 is a protein called PROTEIN (HMG-COA REDUCTASE).

Mol	Chain	Residues	Atoms					ZeroOcc	AltConf	Trace
			Total	C	N	O	S			
1	A	417	Total 3114	C 1942	N 548	O 594	S 30	0	0	0
1	B	405	Total 3011	C 1879	N 528	O 575	S 29	0	0	0
1	C	402	Total 2986	C 1861	N 525	O 571	S 29	0	0	0
1	D	407	Total 3023	C 1887	N 531	O 576	S 29	0	0	0

There are 4 discrepancies between the modelled and reference sequences:

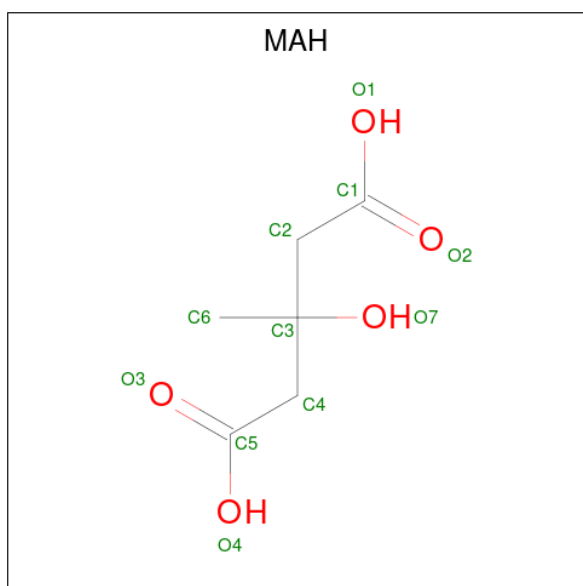
Chain	Residue	Modelled	Actual	Comment	Reference
A	485	ILE	MET	engineered mutation	UNP P04035
B	485	ILE	MET	engineered mutation	UNP P04035
C	485	ILE	MET	engineered mutation	UNP P04035
D	485	ILE	MET	engineered mutation	UNP P04035

- Molecule 2 is COENZYME A (three-letter code: COA) (formula:  $C_{21}H_{36}N_7O_{16}P_3S$ ).



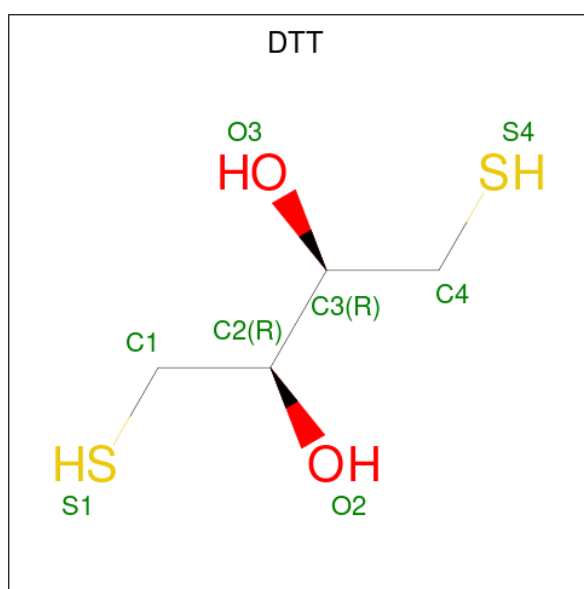
Mol	Chain	Residues	Atoms					ZeroOcc	AltConf		
			Total	C	N	O	P			S	
2	A	1	Total	48	21	7	16	3	1	0	0
2	B	1	Total	48	21	7	16	3	1	0	0
2	C	1	Total	48	21	7	16	3	1	0	0
2	D	1	Total	48	21	7	16	3	1	0	0

- Molecule 3 is 3-HYDROXY-3-METHYL-GLUTARIC ACID (three-letter code: MAH) (formula: C<sub>6</sub>H<sub>10</sub>O<sub>5</sub>).



Mol	Chain	Residues	Atoms	ZeroOcc	AltConf
3	A	1	Total C O 11 6 5	0	0
3	B	1	Total C O 11 6 5	0	0
3	D	1	Total C O 11 6 5	0	0
3	D	1	Total C O 11 6 5	0	0

- Molecule 4 is 2,3-DIHYDROXY-1,4-DITHIOBUTANE (three-letter code: DTT) (formula:  $C_4H_{10}O_2S_2$ ).



Mol	Chain	Residues	Atoms	ZeroOcc	AltConf
4	B	1	Total C O S 8 4 2 2	0	0
4	C	1	Total C O S 8 4 2 2	0	0

- Molecule 5 is water.

Mol	Chain	Residues	Atoms	ZeroOcc	AltConf
5	A	66	Total O 66 66	0	0
5	B	65	Total O 65 65	0	0
5	C	74	Total O 74 74	0	0

*Continued on next page...*

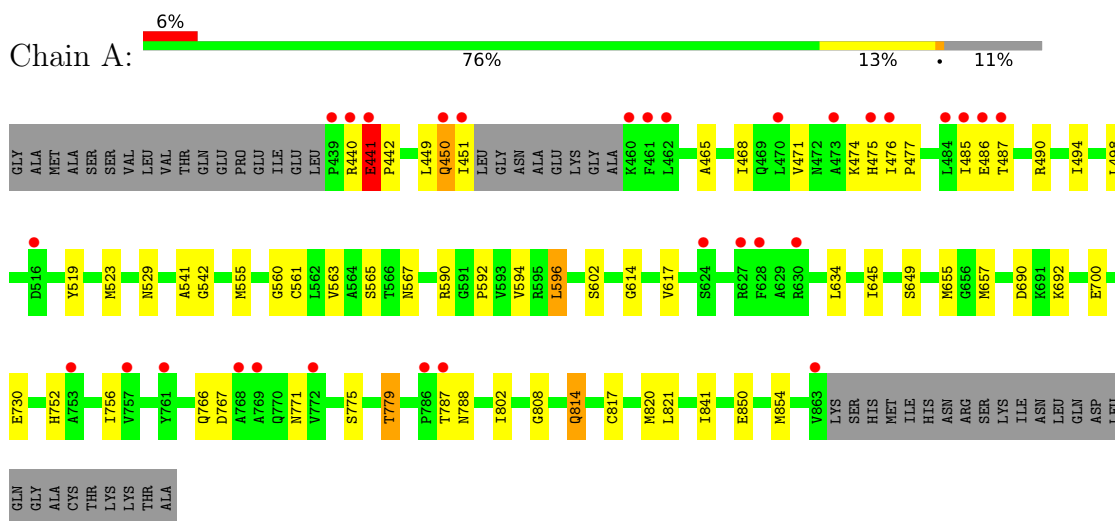
*Continued from previous page...*

<b>Mol</b>	<b>Chain</b>	<b>Residues</b>	<b>Atoms</b>		<b>ZeroOcc</b>	<b>AltConf</b>
5	D	76	Total	O	0	0
			76	76		

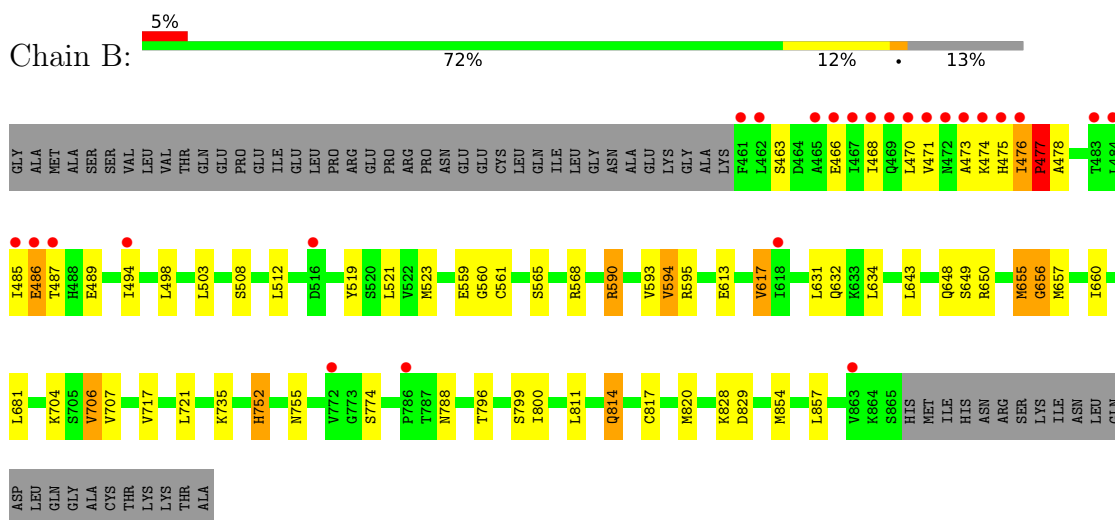
### 3 Residue-property plots i

These plots are drawn for all protein, RNA, DNA and oligosaccharide chains in the entry. The first graphic for a chain summarises the proportions of the various outlier classes displayed in the second graphic. The second graphic shows the sequence view annotated by issues in geometry and electron density. Residues are color-coded according to the number of geometric quality criteria for which they contain at least one outlier: green = 0, yellow = 1, orange = 2 and red = 3 or more. A red dot above a residue indicates a poor fit to the electron density ( $RSRZ > 2$ ). Stretches of 2 or more consecutive residues without any outlier are shown as a green connector. Residues present in the sample, but not in the model, are shown in grey.

- Molecule 1: PROTEIN (HMG-COA REDUCTASE)



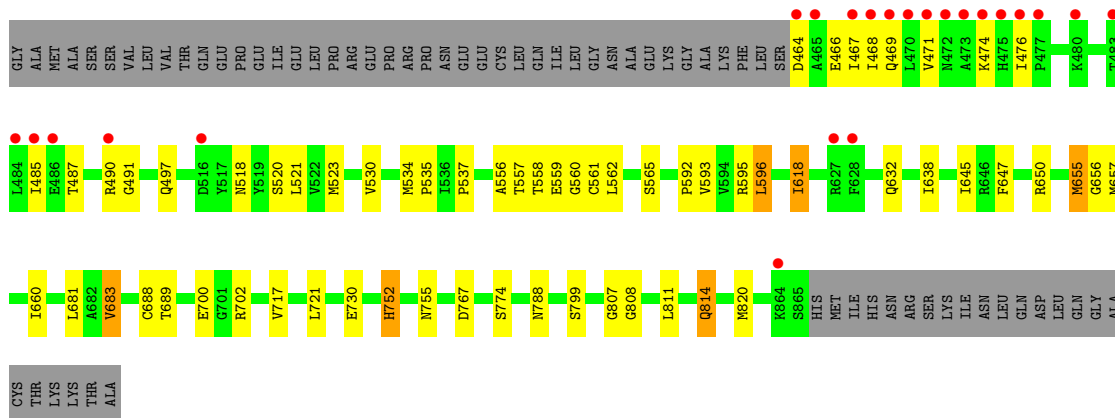
- Molecule 1: PROTEIN (HMG-COA REDUCTASE)



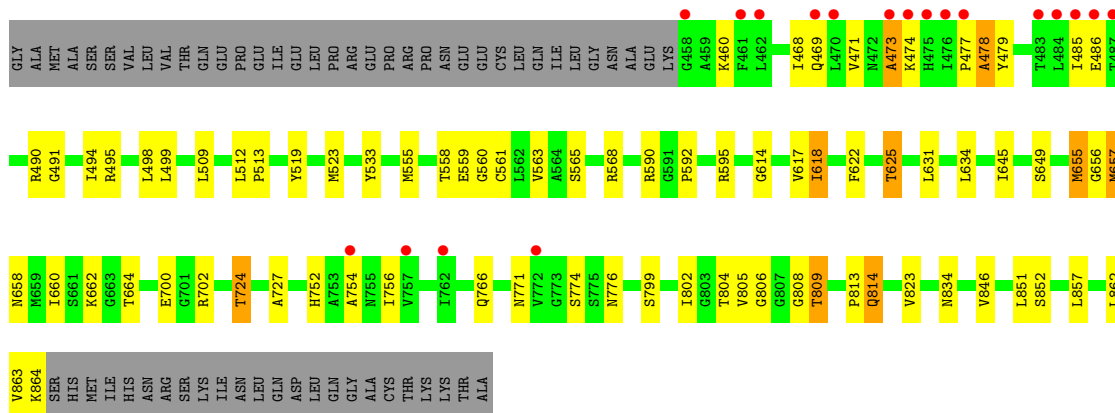
- Molecule 1: PROTEIN (HMG-COA REDUCTASE)







● Molecule 1: PROTEIN (HMG-COA REDUCTASE)



## 4 Data and refinement statistics

Property	Value	Source
Space group	P 1 21 1	Depositor
Cell constants a, b, c, $\alpha$ , $\beta$ , $\gamma$	75.30Å 130.18Å 92.55Å 90.00° 106.48° 90.00°	Depositor
Resolution (Å)	38.00 – 2.10 37.34 – 1.98	Depositor EDS
% Data completeness (in resolution range)	97.0 (38.00-2.10) 48.2 (37.34-1.98)	Depositor EDS
$R_{merge}$	0.06	Depositor
$R_{sym}$	0.06	Depositor
$\langle I/\sigma(I) \rangle$ <sup>1</sup>	1.68 (at 1.98Å)	Xtrriage
Refinement program	CNS 0.5	Depositor
R, $R_{free}$	0.199 , 0.239 0.194 , (Not available)	Depositor DCC
$R_{free}$ test set	No test flags present.	wwPDB-VP
Wilson B-factor (Å <sup>2</sup> )	26.3	Xtrriage
Anisotropy	0.711	Xtrriage
Bulk solvent $k_{sol}$ (e/Å <sup>3</sup> ), $B_{sol}$ (Å <sup>2</sup> )	0.41 , 55.8	EDS
L-test for twinning <sup>2</sup>	$\langle  L  \rangle = 0.48$ , $\langle L^2 \rangle = 0.31$	Xtrriage
Estimated twinning fraction	No twinning to report.	Xtrriage
$F_o, F_c$ correlation	0.95	EDS
Total number of atoms	12667	wwPDB-VP
Average B, all atoms (Å <sup>2</sup> )	36.0	wwPDB-VP

Xtrriage's analysis on translational NCS is as follows: *The largest off-origin peak in the Patterson function is 10.99% of the height of the origin peak. No significant pseudotranslation is detected.*

<sup>1</sup>Intensities estimated from amplitudes.

<sup>2</sup>Theoretical values of  $\langle |L| \rangle$ ,  $\langle L^2 \rangle$  for acentric reflections are 0.5, 0.333 respectively for untwinned datasets, and 0.375, 0.2 for perfectly twinned datasets.

## 5 Model quality [i](#)

### 5.1 Standard geometry [i](#)

Bond lengths and bond angles in the following residue types are not validated in this section: COA, DTT, MAH

The Z score for a bond length (or angle) is the number of standard deviations the observed value is removed from the expected value. A bond length (or angle) with  $|Z| > 5$  is considered an outlier worth inspection. RMSZ is the root-mean-square of all Z scores of the bond lengths (or angles).

Mol	Chain	Bond lengths		Bond angles	
		RMSZ	# Z  >5	RMSZ	# Z  >5
1	A	0.45	0/3160	0.72	1/4272 (0.0%)
1	B	0.46	0/3055	0.70	1/4131 (0.0%)
1	C	0.48	0/3029	0.69	1/4096 (0.0%)
1	D	0.48	0/3067	0.71	1/4146 (0.0%)
All	All	0.46	0/12311	0.70	4/16645 (0.0%)

There are no bond length outliers.

All (4) bond angle outliers are listed below:

Mol	Chain	Res	Type	Atoms	Z	Observed(°)	Ideal(°)
1	A	441	GLU	N-CA-C	-7.82	89.90	111.00
1	C	596	LEU	CA-CB-CG	-5.63	102.36	115.30
1	B	656	GLY	N-CA-C	5.45	126.71	113.10
1	D	495	ARG	NE-CZ-NH2	-5.00	117.80	120.30

There are no chirality outliers.

There are no planarity outliers.

### 5.2 Too-close contacts [i](#)

In the following table, the Non-H and H(model) columns list the number of non-hydrogen atoms and hydrogen atoms in the chain respectively. The H(added) column lists the number of hydrogen atoms added and optimized by MolProbity. The Clashes column lists the number of clashes within the asymmetric unit, whereas Symm-Clashes lists symmetry-related clashes.

Mol	Chain	Non-H	H(model)	H(added)	Clashes	Symm-Clashes
1	A	3114	0	3155	41	0
1	B	3011	0	3054	47	0
1	C	2986	0	3029	47	0

*Continued on next page...*

Continued from previous page...

Mol	Chain	Non-H	H(model)	H(added)	Clashes	Symm-Clashes
1	D	3023	0	3070	62	0
2	A	48	0	32	1	0
2	B	48	0	32	3	0
2	C	48	0	32	1	0
2	D	48	0	32	3	0
3	A	11	0	8	0	0
3	B	11	0	8	0	0
3	D	22	0	16	0	0
4	B	8	0	10	3	0
4	C	8	0	10	4	0
5	A	66	0	0	1	0
5	B	65	0	0	0	0
5	C	74	0	0	2	0
5	D	76	0	0	3	0
All	All	12667	0	12488	189	0

The all-atom clashscore is defined as the number of clashes found per 1000 atoms (including hydrogen atoms). The all-atom clashscore for this structure is 8.

All (189) close contacts within the same asymmetric unit are listed below, sorted by their clash magnitude.

Atom-1	Atom-2	Interatomic distance (Å)	Clash overlap (Å)
1:C:557:THR:HG22	1:C:559:GLU:H	1.27	0.98
1:C:655:MET:HE1	1:C:657:MET:HB2	1.51	0.92
1:C:534:MET:HE3	1:C:535:PRO:HD2	1.54	0.88
1:C:464:ASP:N	1:C:490:ARG:HH21	1.73	0.86
1:B:854:MET:HE1	1:B:857:LEU:HD12	1.65	0.79
1:D:724:THR:HG22	1:D:727:ALA:H	1.50	0.77
1:A:523:MET:HE3	1:A:523:MET:HA	1.68	0.75
1:C:752:HIS:HD2	1:C:755:ASN:HD22	1.31	0.75
1:A:808:GLY:O	1:A:814:GLN:HG3	1.90	0.72
1:D:485:ILE:HD12	1:D:491:GLY:HA2	1.74	0.70
1:A:779:THR:HG21	1:A:850:GLU:OE1	1.91	0.69
1:D:863:VAL:O	1:D:864:LYS:HB2	1.95	0.66
1:C:632:GLN:HE21	1:C:650:ARG:HG2	1.59	0.66
1:D:806:GLY:O	1:D:809:THR:HB	1.96	0.65
1:C:534:MET:HE3	1:C:535:PRO:CD	2.26	0.65
4:C:301:DTT:S1	1:D:559:GLU:HG3	2.37	0.65
1:C:752:HIS:CD2	1:C:755:ASN:HD22	2.12	0.65
1:B:655:MET:HE1	1:B:657:MET:H	1.62	0.64
1:C:534:MET:CE	1:D:813:PRO:HB2	2.27	0.64

Continued on next page...

*Continued from previous page...*

Atom-1	Atom-2	Interatomic distance (Å)	Clash overlap (Å)
1:A:440:ARG:O	1:A:441:GLU:HG2	1.97	0.64
1:B:655:MET:HE1	1:B:657:MET:HB2	1.79	0.64
1:B:735:LYS:HE2	1:B:854:MET:HE3	1.78	0.64
1:B:854:MET:CE	1:B:857:LEU:HD12	2.27	0.64
1:C:656:GLY:O	1:C:660:ILE:HG12	1.98	0.64
1:D:477:PRO:HB3	1:D:479:TYR:CE2	2.35	0.62
1:C:534:MET:HE1	1:D:814:GLN:OE1	2.01	0.61
1:A:486:GLU:H	1:A:486:GLU:CD	2.03	0.60
1:C:534:MET:HE1	1:D:813:PRO:HB2	1.83	0.60
1:D:655:MET:HE1	1:D:657:MET:H	1.66	0.60
1:A:468:ILE:HG12	1:A:498:LEU:HD11	1.81	0.60
1:D:592:PRO:HD2	1:D:645:ILE:O	2.01	0.60
1:D:555:MET:HE3	1:D:563:VAL:HA	1.82	0.60
1:D:460:LYS:HB2	1:D:486:GLU:OE1	2.01	0.59
1:B:655:MET:HE1	1:B:657:MET:N	2.17	0.59
1:A:565:SER:HB2	2:A:100:COA:H61	1.85	0.59
1:B:817:CYS:HA	1:B:820:MET:HE3	1.85	0.58
1:A:596:LEU:HD13	1:A:602:SER:HA	1.86	0.58
1:D:519:TYR:O	1:D:523:MET:HG2	2.04	0.57
1:C:534:MET:HE1	1:D:814:GLN:CD	2.25	0.57
1:B:471:VAL:HG22	1:B:476:ILE:HB	1.87	0.57
1:B:613:GLU:O	1:B:617:VAL:HG13	2.05	0.57
1:D:655:MET:HE1	1:D:657:MET:N	2.20	0.56
1:D:555:MET:CE	1:D:563:VAL:HA	2.35	0.56
2:D:103:COA:O4A	2:D:103:COA:H52A	2.06	0.55
1:D:555:MET:HE3	1:D:563:VAL:HG22	1.88	0.55
1:A:542:GLY:H	1:A:567:ASN:ND2	2.04	0.55
1:A:485:ILE:HG21	1:A:490:ARG:HB3	1.87	0.55
1:D:809:THR:HG23	5:D:2076:HOH:O	2.08	0.54
1:C:557:THR:HG21	1:C:562:LEU:HD23	1.89	0.54
1:C:471:VAL:HA	1:C:476:ILE:HG23	1.90	0.54
1:D:499:LEU:HD23	1:D:509:LEU:HD11	1.90	0.54
1:D:485:ILE:HD11	1:D:494:ILE:HD12	1.90	0.53
1:A:475:HIS:O	1:A:477:PRO:HD3	2.07	0.53
1:B:494:ILE:O	1:B:498:LEU:HD13	2.09	0.53
1:D:805:VAL:N	1:D:809:THR:HG21	2.24	0.52
1:C:464:ASP:N	1:C:467:ILE:HG12	2.24	0.52
1:C:485:ILE:HG22	1:C:487:THR:H	1.75	0.52
1:A:592:PRO:HD2	1:A:645:ILE:O	2.10	0.52
1:D:565:SER:HB2	2:D:103:COA:H61	1.92	0.51
1:C:485:ILE:HD12	1:C:491:GLY:HA2	1.92	0.51

*Continued on next page...*

*Continued from previous page...*

Atom-1	Atom-2	Interatomic distance (Å)	Clash overlap (Å)
1:C:767:ASP:HB2	4:C:301:DTT:H2	1.92	0.51
1:D:804:THR:HG21	1:D:823:VAL:HG22	1.91	0.51
1:B:565:SER:HB2	2:B:101:COA:H61	1.93	0.50
1:D:631:LEU:HA	1:D:649:SER:HB2	1.93	0.50
1:D:754:ALA:HB1	1:D:771:ASN:HD21	1.77	0.50
1:B:828:LYS:O	1:B:829:ASP:HB2	2.12	0.50
1:A:468:ILE:HG12	1:A:498:LEU:CD1	2.41	0.50
1:B:854:MET:CE	1:B:854:MET:HA	2.42	0.50
1:B:463:SER:OG	1:B:466:GLU:HG3	2.12	0.50
1:D:485:ILE:CD1	1:D:494:ILE:HD12	2.41	0.50
1:B:656:GLY:O	1:B:660:ILE:HG12	2.11	0.49
1:C:655:MET:HE1	1:C:657:MET:CB	2.35	0.49
1:B:503:LEU:HD13	1:B:508:SER:OG	2.12	0.49
1:D:808:GLY:O	1:D:814:GLN:HG2	2.13	0.49
1:A:541:ALA:HB2	1:A:555:MET:HE1	1.94	0.49
1:A:817:CYS:HA	1:A:820:MET:HE3	1.94	0.48
1:A:655:MET:SD	1:A:657:MET:HG2	2.54	0.48
4:C:301:DTT:HO2	1:D:558:THR:HG1	1.61	0.48
1:A:541:ALA:HB2	1:A:555:MET:CE	2.44	0.48
1:D:658:ASN:O	1:D:662:LYS:HG3	2.13	0.48
1:D:469:GLN:O	1:D:473:ALA:HB2	2.13	0.48
1:D:804:THR:C	1:D:809:THR:HG21	2.33	0.48
1:A:771:ASN:OD1	1:A:775:SER:OG	2.32	0.48
1:D:590:ARG:HD3	1:D:590:ARG:HA	1.69	0.48
1:C:466:GLU:HG3	1:C:469:GLN:NE2	2.29	0.48
1:C:565:SER:HB2	2:C:102:COA:H61	1.96	0.47
1:A:821:LEU:HD22	1:A:841:ILE:HD13	1.95	0.47
1:B:468:ILE:HG12	1:B:498:LEU:HD11	1.96	0.47
1:D:655:MET:CE	1:D:657:MET:HG2	2.43	0.47
1:D:592:PRO:HG3	1:D:664:THR:HG21	1.97	0.47
1:D:485:ILE:HG21	1:D:490:ARG:HB3	1.96	0.47
1:D:656:GLY:O	1:D:660:ILE:HG12	2.15	0.47
1:A:614:GLY:O	1:A:617:VAL:HG22	2.15	0.47
1:A:542:GLY:H	1:A:567:ASN:HD22	1.62	0.47
1:D:655:MET:HE3	1:D:657:MET:HG2	1.95	0.47
1:D:823:VAL:HG22	1:D:823:VAL:O	2.15	0.47
1:B:470:LEU:O	1:B:475:HIS:HB2	2.15	0.47
1:B:590:ARG:HD3	1:B:590:ARG:HA	1.70	0.47
1:C:592:PRO:HD2	1:C:645:ILE:O	2.15	0.47
1:A:756:ILE:HD13	5:A:2195:HOH:O	2.15	0.46
1:D:776:ASN:ND2	5:D:2063:HOH:O	2.49	0.46

*Continued on next page...*

*Continued from previous page...*

Atom-1	Atom-2	Interatomic distance (Å)	Clash overlap (Å)
1:D:595:ARG:HD2	5:D:2044:HOH:O	2.15	0.46
1:B:811:LEU:HB2	1:B:814:GLN:HG2	1.98	0.46
1:B:476:ILE:O	1:B:477:PRO:O	2.34	0.46
1:C:807:GLY:HA3	4:C:301:DTT:H3	1.97	0.46
1:A:767:ASP:OD2	4:B:302:DTT:H11	2.16	0.46
1:C:717:VAL:O	1:C:721:LEU:HB2	2.15	0.46
1:C:820:MET:HE2	1:D:509:LEU:HD21	1.97	0.46
1:B:487:THR:HG22	1:B:489:GLU:N	2.31	0.46
1:B:593:VAL:HG13	1:B:681:LEU:HB3	1.98	0.46
1:D:614:GLY:O	1:D:618:ILE:HG23	2.16	0.46
1:C:468:ILE:HD11	1:C:497:GLN:HE21	1.80	0.46
1:C:774:SER:HA	1:C:799:SER:O	2.16	0.46
1:A:474:LYS:HB2	1:A:476:ILE:CD1	2.46	0.46
1:C:618:ILE:HD13	1:C:647:PHE:HE2	1.80	0.46
1:D:468:ILE:HG12	1:D:498:LEU:HD12	1.98	0.45
1:D:805:VAL:CA	1:D:809:THR:HG21	2.46	0.45
1:D:477:PRO:O	1:D:478:ALA:CB	2.64	0.45
1:A:657:MET:HE2	1:A:690:ASP:CG	2.37	0.45
1:B:752:HIS:HD2	1:B:755:ASN:HD22	1.65	0.45
1:A:590:ARG:HA	1:A:590:ARG:HD3	1.66	0.45
1:B:468:ILE:HG12	1:B:498:LEU:CD1	2.47	0.45
1:A:494:ILE:O	1:A:498:LEU:HD13	2.17	0.45
1:A:555:MET:CE	1:A:563:VAL:HG13	2.46	0.45
1:D:471:VAL:HG11	1:D:498:LEU:HD21	1.98	0.44
1:B:828:LYS:O	1:B:829:ASP:CB	2.66	0.44
1:C:593:VAL:HG13	1:C:681:LEU:HB3	1.98	0.44
1:A:766:GLN:OE1	1:A:802:ILE:HG13	2.17	0.44
1:D:857:LEU:HD21	1:D:862:LEU:HD22	2.00	0.44
1:C:811:LEU:HB2	1:C:814:GLN:HG2	1.99	0.44
1:B:631:LEU:HA	1:B:649:SER:HB2	2.00	0.44
1:A:471:VAL:HG13	1:A:476:ILE:O	2.18	0.44
1:B:476:ILE:N	1:B:477:PRO:HD2	2.33	0.43
1:D:560:GLY:O	1:D:561:CYS:HB2	2.18	0.43
1:B:559:GLU:HB2	4:B:302:DTT:H12	2.00	0.43
1:B:568:ARG:HG3	2:B:101:COA:H4B	2.00	0.43
1:C:534:MET:CE	1:D:814:GLN:NE2	2.81	0.43
1:C:730:GLU:HG2	1:D:595:ARG:HH22	1.83	0.43
1:A:440:ARG:HH22	1:A:465:ALA:H	1.66	0.43
1:B:632:GLN:HE21	1:B:650:ARG:HE	1.65	0.43
1:C:592:PRO:HG3	1:C:683:VAL:O	2.19	0.43
1:D:468:ILE:HG12	1:D:498:LEU:CD1	2.49	0.43

*Continued on next page...*

*Continued from previous page...*

Atom-1	Atom-2	Interatomic distance (Å)	Clash overlap (Å)
1:C:820:MET:HE2	1:C:820:MET:HB2	1.85	0.42
1:B:485:ILE:HD12	1:B:485:ILE:N	2.34	0.42
1:D:774:SER:HA	1:D:799:SER:O	2.20	0.42
1:D:474:LYS:HB2	1:D:474:LYS:HE3	1.76	0.42
1:C:702:ARG:O	1:C:799:SER:HA	2.20	0.42
1:C:560:GLY:O	1:C:561:CYS:HB2	2.20	0.42
1:A:519:TYR:O	1:A:523:MET:HG2	2.20	0.42
1:C:523:MET:CE	1:C:530:VAL:HB	2.48	0.42
1:C:688:CYS:HB2	1:C:689:THR:CA	2.48	0.42
1:A:692:LYS:HB2	1:A:692:LYS:HE2	1.86	0.42
1:B:476:ILE:O	1:B:476:ILE:HG22	2.19	0.42
1:B:519:TYR:O	1:B:523:MET:HG2	2.19	0.42
1:C:518:ASN:ND2	1:C:520:SER:OG	2.53	0.42
1:C:656:GLY:HA2	5:C:2097:HOH:O	2.19	0.42
1:D:568:ARG:HG3	2:D:103:COA:H4B	2.01	0.42
1:A:560:GLY:O	1:A:561:CYS:HB2	2.20	0.42
1:B:473:ALA:O	1:B:475:HIS:N	2.53	0.42
1:C:537:PRO:O	1:C:556:ALA:HA	2.20	0.41
1:A:767:ASP:HB2	4:B:302:DTT:H2	2.00	0.41
1:A:730:GLU:HG2	1:B:595:ARG:HH22	1.85	0.41
1:B:476:ILE:N	1:B:477:PRO:CD	2.83	0.41
1:D:756:ILE:HG13	1:D:846:VAL:HA	2.02	0.41
1:A:450:GLN:HG3	1:A:451:ILE:H	1.84	0.41
1:B:560:GLY:O	1:B:561:CYS:HB2	2.20	0.41
1:B:594:VAL:HG12	1:B:643:LEU:HB3	2.03	0.41
1:A:555:MET:HE3	1:A:563:VAL:HG22	2.03	0.41
1:B:632:GLN:OE1	1:B:648:GLN:HG2	2.20	0.41
1:B:706:VAL:HG13	1:B:800:ILE:HD12	2.03	0.41
1:C:464:ASP:N	1:C:490:ARG:NH2	2.55	0.41
1:C:595:ARG:HD2	5:C:2081:HOH:O	2.20	0.41
1:D:568:ARG:HD3	1:D:852:SER:OG	2.21	0.41
1:A:440:ARG:NH2	1:A:465:ALA:H	2.19	0.41
1:B:706:VAL:HG23	1:B:707:VAL:N	2.36	0.41
1:B:717:VAL:O	1:B:721:LEU:HB2	2.21	0.41
1:D:702:ARG:O	1:D:799:SER:HA	2.21	0.41
1:D:766:GLN:OE1	1:D:802:ILE:HG13	2.20	0.41
1:D:823:VAL:CG2	1:D:834:ASN:O	2.69	0.41
1:C:557:THR:HG22	1:C:558:THR:N	2.35	0.40
1:C:808:GLY:O	1:C:814:GLN:HG3	2.21	0.40
1:B:568:ARG:HG3	2:B:101:COA:C4B	2.52	0.40
1:B:655:MET:CE	1:B:657:MET:HB2	2.50	0.40

*Continued on next page...*



*Continued from previous page...*

Atom-1	Atom-2	Interatomic distance (Å)	Clash overlap (Å)
1:B:774:SER:HA	1:B:799:SER:O	2.21	0.40
1:B:796:THR:HG21	1:C:638:ILE:O	2.21	0.40
1:A:850:GLU:O	1:A:854:MET:HG2	2.22	0.40
1:D:622:PHE:O	1:D:625:THR:HB	2.21	0.40
1:A:485:ILE:HG22	1:A:487:THR:H	1.87	0.40
1:D:513:PRO:HB2	1:D:533:TYR:CZ	2.56	0.40

There are no symmetry-related clashes.

## 5.3 Torsion angles [i](#)

### 5.3.1 Protein backbone [i](#)

In the following table, the Percentiles column shows the percent Ramachandran outliers of the chain as a percentile score with respect to all X-ray entries followed by that with respect to entries of similar resolution.

The Analysed column shows the number of residues for which the backbone conformation was analysed, and the total number of residues.

Mol	Chain	Analysed	Favoured	Allowed	Outliers	Percentiles	
1	A	413/467 (88%)	388 (94%)	21 (5%)	4 (1%)	15	11
1	B	403/467 (86%)	380 (94%)	18 (4%)	5 (1%)	13	8
1	C	400/467 (86%)	383 (96%)	16 (4%)	1 (0%)	41	41
1	D	405/467 (87%)	383 (95%)	20 (5%)	2 (0%)	29	26
All	All	1621/1868 (87%)	1534 (95%)	75 (5%)	12 (1%)	22	18

All (12) Ramachandran outliers are listed below:

Mol	Chain	Res	Type
1	A	450	GLN
1	B	474	LYS
1	B	477	PRO
1	A	441	GLU
1	B	478	ALA
1	D	478	ALA
1	A	449	LEU
1	C	474	LYS
1	A	442	PRO

*Continued on next page...*

*Continued from previous page...*

Mol	Chain	Res	Type
1	B	486	GLU
1	D	473	ALA
1	B	476	ILE

### 5.3.2 Protein sidechains [i](#)

In the following table, the Percentiles column shows the percent sidechain outliers of the chain as a percentile score with respect to all X-ray entries followed by that with respect to entries of similar resolution.

The Analysed column shows the number of residues for which the sidechain conformation was analysed, and the total number of residues.

Mol	Chain	Analysed	Rotameric	Outliers	Percentiles	
1	A	335/375 (89%)	324 (97%)	11 (3%)	38	40
1	B	323/375 (86%)	309 (96%)	14 (4%)	29	29
1	C	320/375 (85%)	311 (97%)	9 (3%)	43	47
1	D	323/375 (86%)	310 (96%)	13 (4%)	31	32
All	All	1301/1500 (87%)	1254 (96%)	47 (4%)	35	36

All (47) residues with a non-rotameric sidechain are listed below:

Mol	Chain	Res	Type
1	A	529	ASN
1	A	594	VAL
1	A	596	LEU
1	A	634	LEU
1	A	649	SER
1	A	700	GLU
1	A	752	HIS
1	A	779	THR
1	A	787	THR
1	A	788	ASN
1	A	814	GLN
1	B	477	PRO
1	B	486	GLU
1	B	512	LEU
1	B	521	LEU
1	B	590	ARG
1	B	594	VAL
1	B	617	VAL

*Continued on next page...*

*Continued from previous page...*

Mol	Chain	Res	Type
1	B	634	LEU
1	B	655	MET
1	B	704	LYS
1	B	706	VAL
1	B	752	HIS
1	B	788	ASN
1	B	814	GLN
1	C	521	LEU
1	C	596	LEU
1	C	618	ILE
1	C	655	MET
1	C	683	VAL
1	C	700	GLU
1	C	752	HIS
1	C	788	ASN
1	C	814	GLN
1	D	512	LEU
1	D	617	VAL
1	D	618	ILE
1	D	625	THR
1	D	634	LEU
1	D	655	MET
1	D	657	MET
1	D	700	GLU
1	D	724	THR
1	D	752	HIS
1	D	809	THR
1	D	814	GLN
1	D	851	LEU

Sometimes sidechains can be flipped to improve hydrogen bonding and reduce clashes. All (15) such sidechains are listed below:

Mol	Chain	Res	Type
1	A	488	HIS
1	A	567	ASN
1	A	632	GLN
1	A	788	ASN
1	B	488	HIS
1	B	635	HIS
1	B	752	HIS
1	C	469	GLN
1	C	488	HIS

*Continued on next page...*

Continued from previous page...

Mol	Chain	Res	Type
1	C	497	GLN
1	C	518	ASN
1	C	632	GLN
1	C	752	HIS
1	C	788	ASN
1	D	776	ASN

### 5.3.3 RNA [i](#)

There are no RNA molecules in this entry.

### 5.4 Non-standard residues in protein, DNA, RNA chains [i](#)

There are no non-standard protein/DNA/RNA residues in this entry.

### 5.5 Carbohydrates [i](#)

There are no monosaccharides in this entry.

### 5.6 Ligand geometry [i](#)

10 ligands are modelled in this entry.

In the following table, the Counts columns list the number of bonds (or angles) for which Mogul statistics could be retrieved, the number of bonds (or angles) that are observed in the model and the number of bonds (or angles) that are defined in the Chemical Component Dictionary. The Link column lists molecule types, if any, to which the group is linked. The Z score for a bond length (or angle) is the number of standard deviations the observed value is removed from the expected value. A bond length (or angle) with  $|Z| > 2$  is considered an outlier worth inspection. RMSZ is the root-mean-square of all Z scores of the bond lengths (or angles).

Mol	Type	Chain	Res	Link	Bond lengths			Bond angles		
					Counts	RMSZ	# Z  > 2	Counts	RMSZ	# Z  > 2
2	COA	B	101	-	41,50,50	1.81	6 (14%)	52,75,75	1.11	6 (11%)
4	DTT	B	302	-	7,7,7	1.26	0	4,8,8	0.64	0
2	COA	D	103	-	41,50,50	1.82	5 (12%)	52,75,75	0.99	4 (7%)
2	COA	C	102	-	41,50,50	1.72	5 (12%)	52,75,75	1.02	3 (5%)
3	MAH	A	200	-	10,10,10	1.39	2 (20%)	9,14,14	1.03	0
3	MAH	B	201	-	10,10,10	1.39	2 (20%)	9,14,14	1.14	0

Mol	Type	Chain	Res	Link	Bond lengths			Bond angles		
					Counts	RMSZ	# Z  > 2	Counts	RMSZ	# Z  > 2
3	MAH	D	202	-	10,10,10	1.40	2 (20%)	9,14,14	1.01	0
2	COA	A	100	-	41,50,50	1.71	5 (12%)	52,75,75	0.98	5 (9%)
4	DTT	C	301	-	7,7,7	1.02	0	4,8,8	0.76	0
3	MAH	D	203	-	10,10,10	1.51	2 (20%)	9,14,14	1.06	0

In the following table, the Chirals column lists the number of chiral outliers, the number of chiral centers analysed, the number of these observed in the model and the number defined in the Chemical Component Dictionary. Similar counts are reported in the Torsion and Rings columns. '-' means no outliers of that kind were identified.

Mol	Type	Chain	Res	Link	Chirals	Torsions	Rings
2	COA	B	101	-	1/1/11/13	12/44/64/64	0/3/3/3
4	DTT	B	302	-	-	3/8/8/8	-
2	COA	D	103	-	1/1/11/13	7/44/64/64	0/3/3/3
2	COA	C	102	-	1/1/11/13	5/44/64/64	0/3/3/3
3	MAH	A	200	-	-	0/10/10/10	-
3	MAH	B	201	-	-	0/10/10/10	-
3	MAH	D	202	-	-	0/10/10/10	-
2	COA	A	100	-	1/1/11/13	12/44/64/64	0/3/3/3
4	DTT	C	301	-	-	7/8/8/8	-
3	MAH	D	203	-	-	0/10/10/10	-

All (29) bond length outliers are listed below:

Mol	Chain	Res	Type	Atoms	Z	Observed(Å)	Ideal(Å)
2	B	101	COA	C4A-N3A	8.34	1.47	1.35
2	D	103	COA	C4A-N3A	8.13	1.46	1.35
2	C	102	COA	C4A-N3A	7.96	1.46	1.35
2	A	100	COA	C4A-N3A	7.58	1.46	1.35
2	A	100	COA	P3B-O7A	3.45	1.61	1.50
2	B	101	COA	P3B-O7A	3.27	1.61	1.50
2	D	103	COA	P3B-O7A	3.21	1.60	1.50
2	D	103	COA	P1A-O1A	2.95	1.61	1.50
3	D	203	MAH	C6-C3	2.93	1.55	1.52
2	C	102	COA	P3B-O7A	2.93	1.60	1.50
3	A	200	MAH	C6-C3	2.88	1.55	1.52
2	D	103	COA	P2A-O4A	2.87	1.61	1.50
2	B	101	COA	P2A-O4A	2.86	1.61	1.50
2	A	100	COA	P2A-O4A	2.83	1.60	1.50
2	C	102	COA	P1A-O1A	2.82	1.60	1.50

*Continued on next page...*

Continued from previous page...

Mol	Chain	Res	Type	Atoms	Z	Observed(Å)	Ideal(Å)
2	A	100	COA	P1A-O1A	2.75	1.60	1.50
2	C	102	COA	P2A-O4A	2.73	1.60	1.50
2	B	101	COA	P1A-O1A	2.69	1.60	1.50
3	D	202	MAH	C6-C3	2.68	1.55	1.52
3	D	203	MAH	O1-C1	-2.58	1.22	1.30
3	B	201	MAH	C6-C3	2.39	1.55	1.52
2	B	101	COA	P3B-O3B	2.32	1.63	1.59
2	D	103	COA	C5A-C4A	2.24	1.46	1.40
3	A	200	MAH	O1-C1	-2.16	1.23	1.30
2	A	100	COA	C5A-C4A	2.15	1.46	1.40
2	B	101	COA	C5A-C4A	2.13	1.46	1.40
3	D	202	MAH	O1-C1	-2.12	1.23	1.30
2	C	102	COA	C5A-C4A	2.10	1.46	1.40
3	B	201	MAH	O1-C1	-2.05	1.23	1.30

All (18) bond angle outliers are listed below:

Mol	Chain	Res	Type	Atoms	Z	Observed(°)	Ideal(°)
2	B	101	COA	C4A-C5A-N7A	2.83	112.35	109.40
2	B	101	COA	C3B-C2B-C1B	2.68	105.84	99.89
2	B	101	COA	O6A-CCP-CBP	2.59	114.70	110.55
2	C	102	COA	C4A-C5A-N7A	2.53	112.03	109.40
2	D	103	COA	C3B-C2B-C1B	2.51	105.45	99.89
2	C	102	COA	C3B-C2B-C1B	2.42	105.24	99.89
2	A	100	COA	C7P-N8P-C9P	-2.34	118.41	122.59
2	A	100	COA	C3B-C2B-C1B	2.26	104.89	99.89
2	A	100	COA	P2A-O3A-P1A	-2.23	125.17	132.83
2	A	100	COA	O5P-C5P-C6P	-2.23	117.94	122.02
2	D	103	COA	CEP-CBP-CAP	2.19	112.62	108.82
2	B	101	COA	CEP-CBP-CAP	2.13	112.51	108.82
2	D	103	COA	C4A-C5A-N7A	2.13	111.62	109.40
2	B	101	COA	O5P-C5P-C6P	-2.13	118.13	122.02
2	D	103	COA	O5P-C5P-C6P	-2.11	118.16	122.02
2	A	100	COA	C4A-C5A-N7A	2.04	111.52	109.40
2	C	102	COA	O5P-C5P-C6P	-2.03	118.31	122.02
2	B	101	COA	O3B-C3B-C4B	2.01	117.36	110.08

All (4) chirality outliers are listed below:

Mol	Chain	Res	Type	Atom
2	A	100	COA	C3B
2	B	101	COA	C3B

Continued on next page...

*Continued from previous page...*

Mol	Chain	Res	Type	Atom
2	C	102	COA	C3B
2	D	103	COA	C3B

All (46) torsion outliers are listed below:

Mol	Chain	Res	Type	Atoms
2	A	100	COA	CCP-O6A-P2A-O3A
2	A	100	COA	CAP-CBP-CCP-O6A
2	A	100	COA	C2P-C3P-N4P-C5P
2	B	101	COA	C5B-O5B-P1A-O1A
2	B	101	COA	C5B-O5B-P1A-O3A
2	B	101	COA	P2A-O3A-P1A-O5B
2	B	101	COA	CCP-O6A-P2A-O4A
2	B	101	COA	CCP-O6A-P2A-O5A
2	B	101	COA	CAP-CBP-CCP-O6A
2	C	102	COA	C3B-O3B-P3B-O7A
2	D	103	COA	C2P-C3P-N4P-C5P
4	B	302	DTT	S1-C1-C2-O2
4	B	302	DTT	S1-C1-C2-C3
4	C	301	DTT	S1-C1-C2-C3
4	C	301	DTT	C1-C2-C3-O3
4	C	301	DTT	C1-C2-C3-C4
4	C	301	DTT	O2-C2-C3-O3
4	C	301	DTT	O2-C2-C3-C4
4	C	301	DTT	C2-C3-C4-S4
4	C	301	DTT	O3-C3-C4-S4
2	A	100	COA	O5P-C5P-N4P-C3P
2	A	100	COA	C6P-C5P-N4P-C3P
2	B	101	COA	C2B-C3B-O3B-P3B
2	C	102	COA	C2B-C3B-O3B-P3B
2	D	103	COA	C2B-C3B-O3B-P3B
2	B	101	COA	CDP-CBP-CCP-O6A
2	A	100	COA	CEP-CBP-CCP-O6A
2	B	101	COA	CEP-CBP-CCP-O6A
2	B	101	COA	P1A-O3A-P2A-O6A
2	A	100	COA	C3B-O3B-P3B-O8A
2	D	103	COA	P1A-O3A-P2A-O4A
2	C	102	COA	O5P-C5P-N4P-C3P
2	D	103	COA	O5P-C5P-N4P-C3P
2	C	102	COA	C6P-C5P-N4P-C3P
2	A	100	COA	CCP-O6A-P2A-O5A
2	A	100	COA	CDP-CBP-CCP-O6A

*Continued on next page...*

*Continued from previous page...*

Mol	Chain	Res	Type	Atoms
2	D	103	COA	C6P-C5P-N4P-C3P
2	D	103	COA	CEP-CBP-CCP-O6A
2	B	101	COA	O5P-C5P-N4P-C3P
2	A	100	COA	C3B-O3B-P3B-O7A
2	A	100	COA	C3B-O3B-P3B-O9A
2	B	101	COA	CCP-O6A-P2A-O3A
2	D	103	COA	C3B-O3B-P3B-O8A
2	C	102	COA	P1A-O3A-P2A-O4A
2	A	100	COA	CCP-O6A-P2A-O4A
4	B	302	DTT	C1-C2-C3-C4

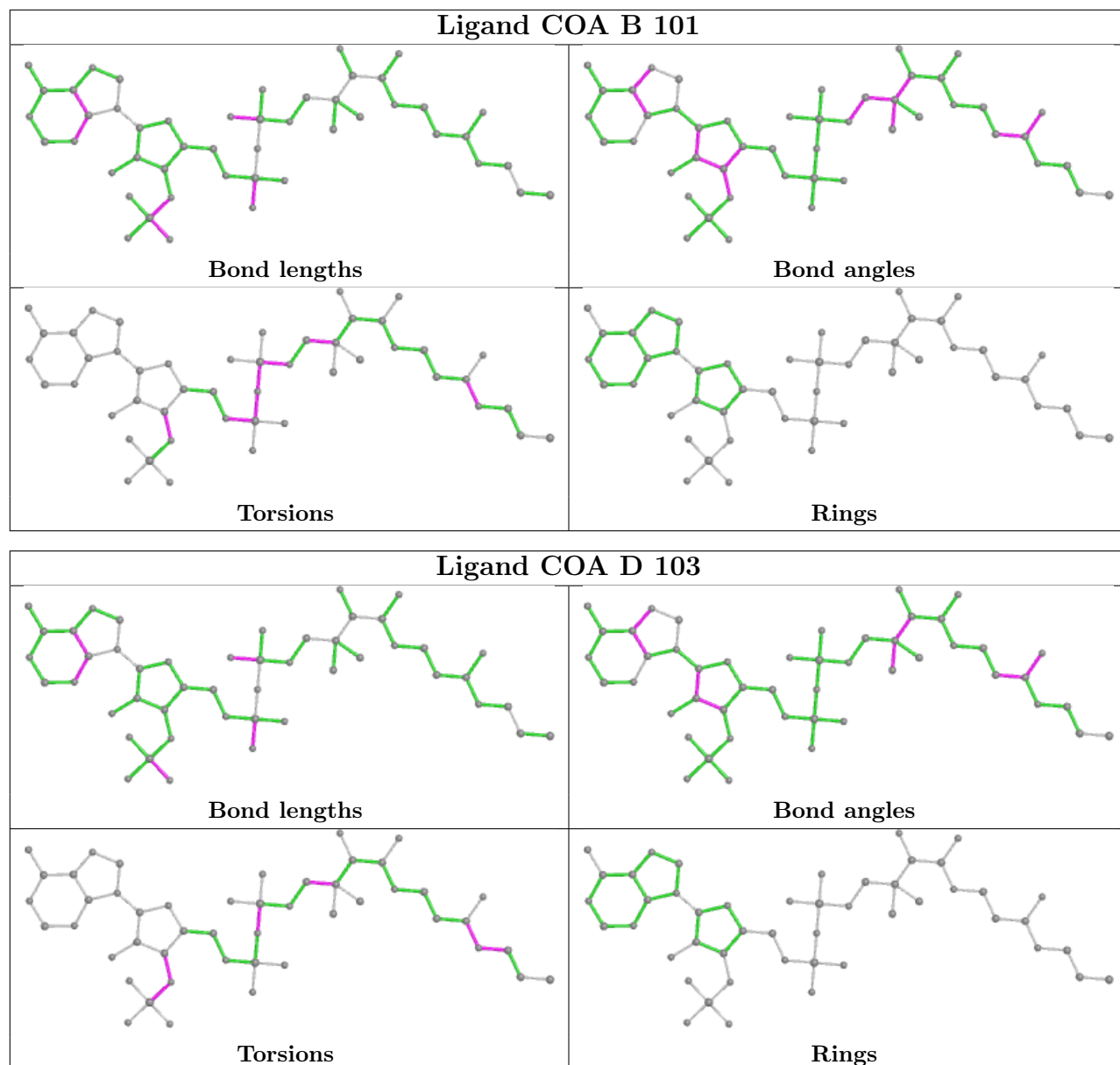
There are no ring outliers.

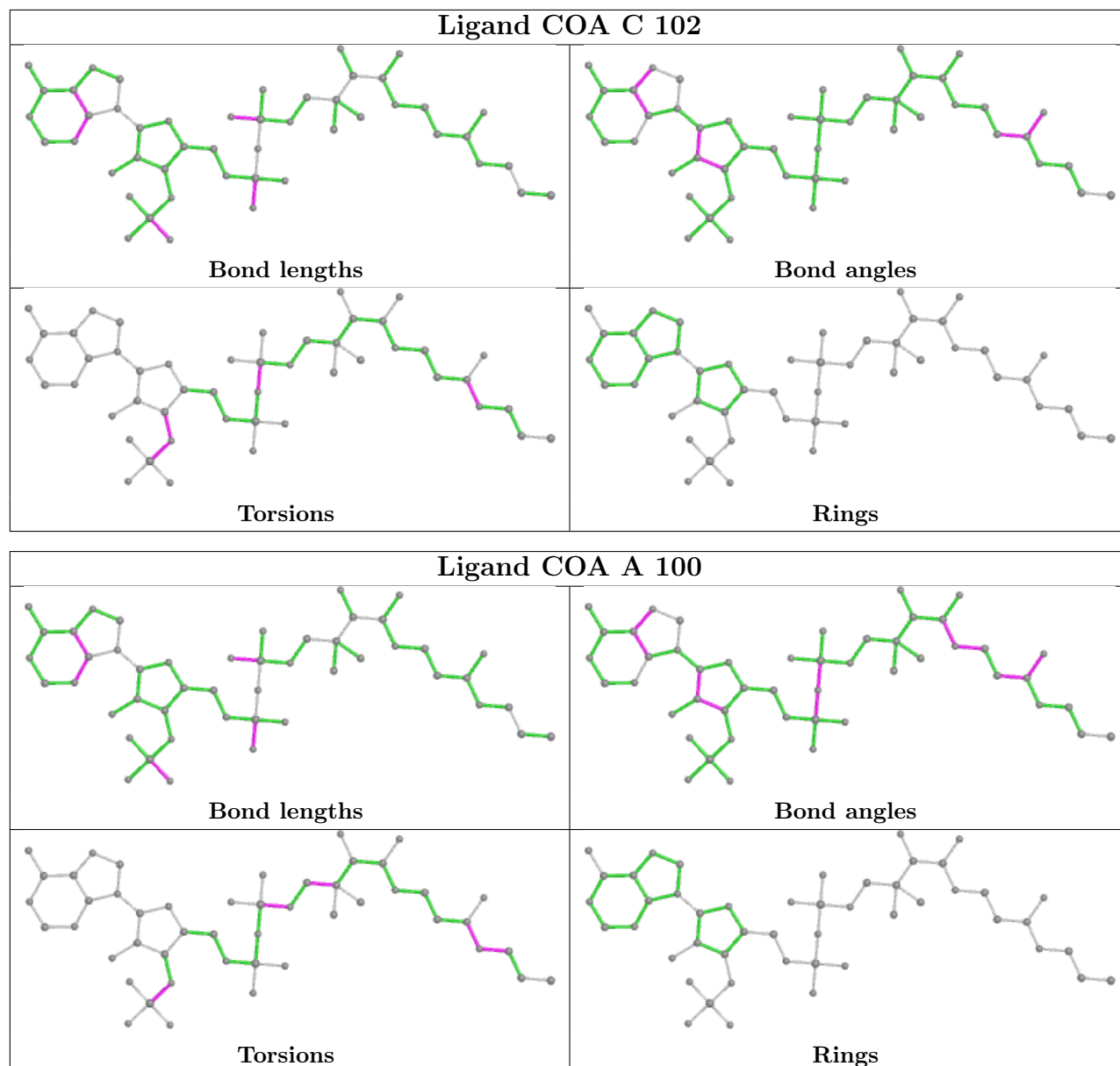
6 monomers are involved in 15 short contacts:

Mol	Chain	Res	Type	Clashes	Symm-Clashes
2	B	101	COA	3	0
4	B	302	DTT	3	0
2	D	103	COA	3	0
2	C	102	COA	1	0
2	A	100	COA	1	0
4	C	301	DTT	4	0

The following is a two-dimensional graphical depiction of Mogul quality analysis of bond lengths, bond angles, torsion angles, and ring geometry for all instances of the Ligand of Interest. In addition, ligands with molecular weight > 250 and outliers as shown on the validation Tables will also be included. For torsion angles, if less than 5% of the Mogul distribution of torsion angles is within 10 degrees of the torsion angle in question, then that torsion angle is considered an outlier. Any bond that is central to one or more torsion angles identified as an outlier by Mogul will be highlighted in the graph. For rings, the root-mean-square deviation (RMSD) between the ring in question and similar rings identified by Mogul is calculated over all ring torsion angles. If the average RMSD is greater than 60 degrees and the minimal RMSD between the ring in question and any Mogul-identified rings is also greater than 60 degrees, then that ring is considered an outlier. The outliers are highlighted in purple. The color gray indicates Mogul did not find sufficient equivalents in the CSD to analyse the geometry.







## 5.7 Other polymers [i](#)

There are no such residues in this entry.

## 5.8 Polymer linkage issues [i](#)

There are no chain breaks in this entry.

## 6 Fit of model and data

### 6.1 Protein, DNA and RNA chains

In the following table, the column labelled ‘#RSRZ > 2’ contains the number (and percentage) of RSRZ outliers, followed by percent RSRZ outliers for the chain as percentile scores relative to all X-ray entries and entries of similar resolution. The OWAB column contains the minimum, median, 95<sup>th</sup> percentile and maximum values of the occupancy-weighted average B-factor per residue. The column labelled ‘Q < 0.9’ lists the number of (and percentage) of residues with an average occupancy less than 0.9.

Mol	Chain	Analysed	<RSRZ>	#RSRZ>2	OWAB(Å <sup>2</sup> )	Q<0.9
1	A	417/467 (89%)	0.18	30 (7%) 15 19	19, 34, 62, 79	0
1	B	405/467 (86%)	0.15	25 (6%) 20 25	19, 32, 66, 80	0
1	C	402/467 (86%)	0.05	23 (5%) 23 29	17, 29, 69, 93	0
1	D	407/467 (87%)	-0.07	19 (4%) 31 37	19, 30, 59, 76	0
All	All	1631/1868 (87%)	0.08	97 (5%) 22 27	17, 32, 64, 93	0

All (97) RSRZ outliers are listed below:

Mol	Chain	Res	Type	RSRZ
1	A	451	ILE	8.8
1	B	461	PHE	8.1
1	C	470	LEU	7.8
1	C	485	ILE	7.4
1	C	475	HIS	6.8
1	B	484	LEU	6.5
1	C	484	LEU	6.4
1	C	473	ALA	6.4
1	D	473	ALA	6.2
1	C	464	ASP	6.1
1	B	473	ALA	6.0
1	C	476	ILE	5.7
1	B	476	ILE	5.7
1	B	485	ILE	5.6
1	A	461	PHE	5.6
1	C	471	VAL	5.4
1	C	483	THR	5.3
1	D	470	LEU	5.3
1	B	470	LEU	5.1
1	B	487	THR	4.9
1	A	439	PRO	4.9

*Continued on next page...*

*Continued from previous page...*

<b>Mol</b>	<b>Chain</b>	<b>Res</b>	<b>Type</b>	<b>RSRZ</b>
1	C	486	GLU	4.8
1	B	471	VAL	4.7
1	C	627	ARG	4.6
1	A	462	LEU	4.5
1	C	467	ILE	4.4
1	B	863	VAL	4.4
1	D	461	PHE	4.3
1	C	472	ASN	4.3
1	C	469	GLN	4.2
1	B	472	ASN	4.0
1	A	450	GLN	4.0
1	B	462	LEU	3.9
1	A	627	ARG	3.8
1	A	440	ARG	3.8
1	D	484	LEU	3.8
1	A	460	LYS	3.7
1	B	786	PRO	3.7
1	C	465	ALA	3.6
1	A	484	LEU	3.5
1	D	462	LEU	3.5
1	B	483	THR	3.4
1	B	516	ASP	3.4
1	B	469	GLN	3.4
1	B	475	HIS	3.3
1	B	468	ILE	3.3
1	D	486	GLU	3.3
1	B	474	LYS	3.2
1	D	474	LYS	3.2
1	D	483	THR	3.2
1	A	476	ILE	3.2
1	B	466	GLU	3.1
1	B	465	ALA	3.1
1	A	772	VAL	3.1
1	D	772	VAL	3.1
1	B	772	VAL	3.0
1	D	469	GLN	3.0
1	A	475	HIS	3.0
1	D	476	ILE	2.9
1	A	486	GLU	2.9
1	C	480	LYS	2.9
1	B	467	ILE	2.8
1	D	487	THR	2.8

*Continued on next page...*

*Continued from previous page...*

Mol	Chain	Res	Type	RSRZ
1	B	486	GLU	2.8
1	C	468	ILE	2.7
1	D	485	ILE	2.7
1	C	477	PRO	2.7
1	A	787	THR	2.6
1	A	786	PRO	2.6
1	A	768	ALA	2.5
1	A	485	ILE	2.5
1	C	628	PHE	2.5
1	B	494	ILE	2.4
1	A	473	ALA	2.4
1	A	487	THR	2.4
1	C	864	LYS	2.4
1	A	624	SER	2.4
1	D	477	PRO	2.4
1	A	516	ASP	2.3
1	A	761	TYR	2.3
1	D	475	HIS	2.3
1	A	863	VAL	2.2
1	A	753	ALA	2.2
1	C	490	ARG	2.2
1	A	757	VAL	2.2
1	B	618	ILE	2.2
1	A	628	PHE	2.2
1	A	769	ALA	2.2
1	C	516	ASP	2.2
1	D	762	ILE	2.1
1	D	754	ALA	2.1
1	A	630	ARG	2.1
1	C	474	LYS	2.1
1	A	470	LEU	2.1
1	D	757	VAL	2.0
1	A	441	GLU	2.0
1	D	458	GLY	2.0

## 6.2 Non-standard residues in protein, DNA, RNA chains

There are no non-standard protein/DNA/RNA residues in this entry.

### 6.3 Carbohydrates [i](#)

There are no monosaccharides in this entry.

### 6.4 Ligands [i](#)

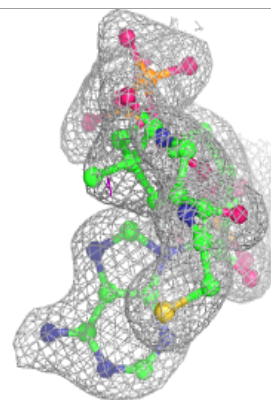
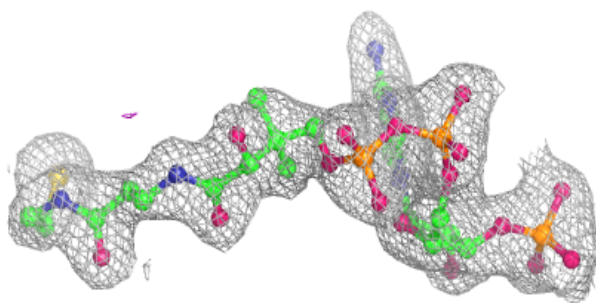
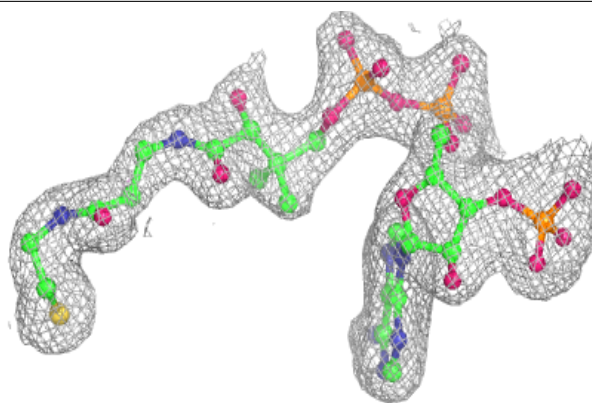
In the following table, the Atoms column lists the number of modelled atoms in the group and the number defined in the chemical component dictionary. The B-factors column lists the minimum, median, 95<sup>th</sup> percentile and maximum values of B factors of atoms in the group. The column labelled 'Q< 0.9' lists the number of atoms with occupancy less than 0.9.

Mol	Type	Chain	Res	Atoms	RSCC	RSR	B-factors(Å <sup>2</sup> )	Q<0.9
4	DTT	B	302	8/8	0.83	0.19	70,72,74,79	0
4	DTT	C	301	8/8	0.90	0.15	68,70,72,75	0
2	COA	D	103	48/48	0.95	0.09	35,42,51,52	0
3	MAH	A	200	11/11	0.95	0.12	31,39,41,42	0
2	COA	A	100	48/48	0.95	0.09	35,40,51,53	0
2	COA	B	101	48/48	0.95	0.09	37,44,54,55	0
2	COA	C	102	48/48	0.96	0.09	27,33,44,48	0
3	MAH	D	202	11/11	0.96	0.11	23,30,33,35	0
3	MAH	B	201	11/11	0.97	0.13	31,34,35,36	0
3	MAH	D	203	11/11	0.98	0.11	32,36,37,37	0

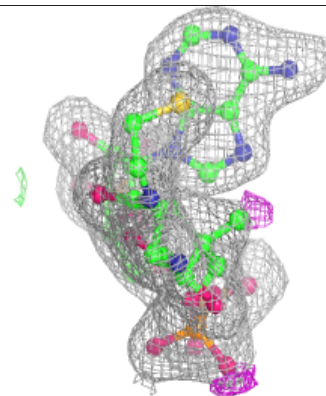
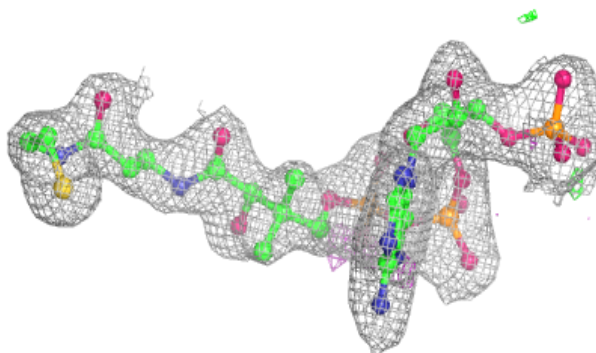
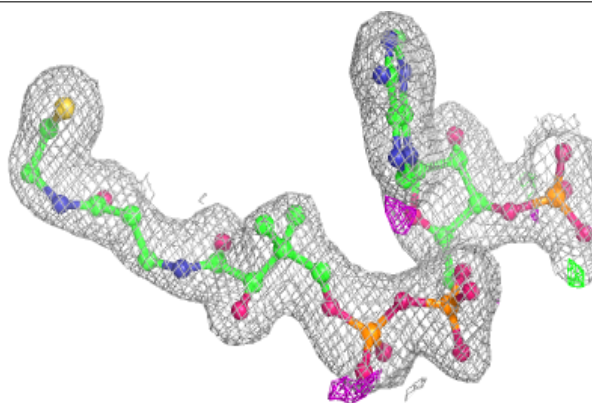
The following is a graphical depiction of the model fit to experimental electron density of all instances of the Ligand of Interest. In addition, ligands with molecular weight > 250 and outliers as shown on the geometry validation Tables will also be included. Each fit is shown from different orientation to approximate a three-dimensional view.

**Electron density around COA D 103:**

$2mF_o-DF_c$  (at 0.7 rmsd) in gray  
 $mF_o-DF_c$  (at 3 rmsd) in purple (negative)  
and green (positive)

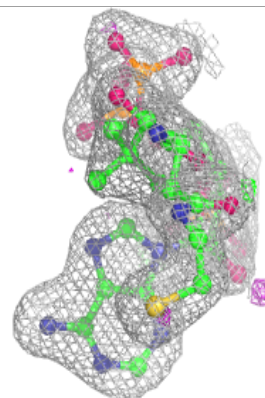
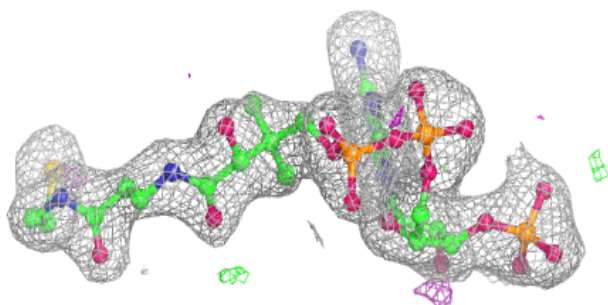
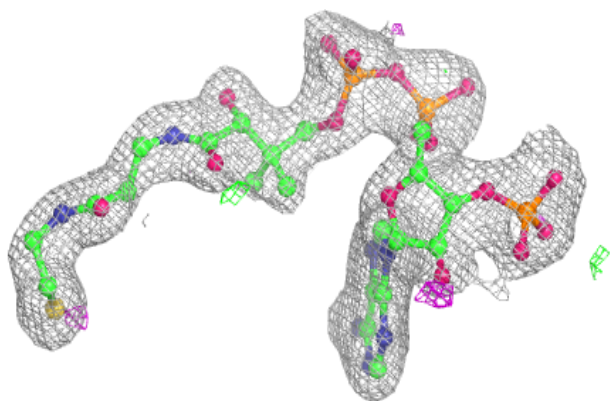
**Electron density around COA A 100:**

$2mF_o-DF_c$  (at 0.7 rmsd) in gray  
 $mF_o-DF_c$  (at 3 rmsd) in purple (negative)  
and green (positive)

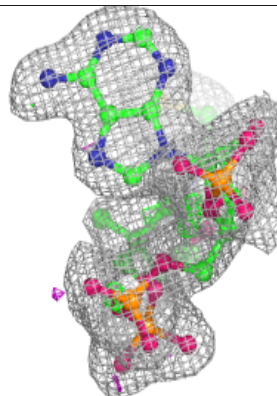
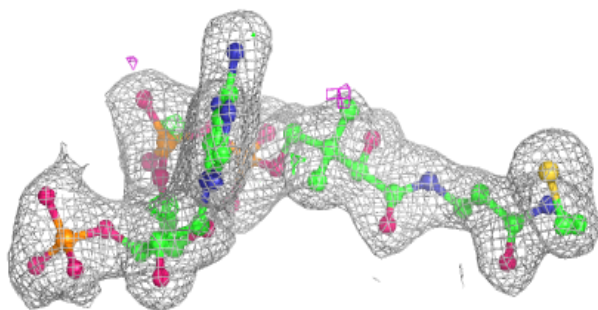
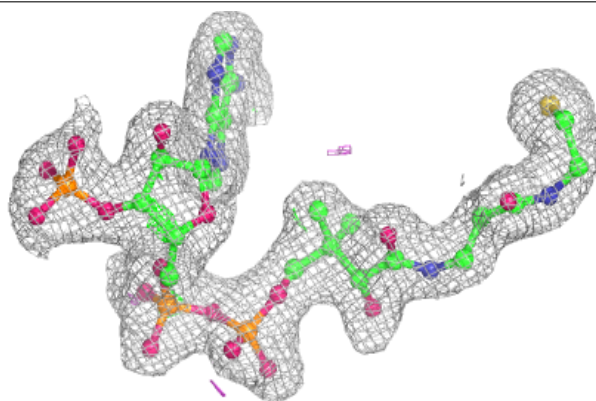


**Electron density around COA B 101:**

$2mF_o-DF_c$  (at 0.7 rmsd) in gray  
 $mF_o-DF_c$  (at 3 rmsd) in purple (negative)  
and green (positive)

**Electron density around COA C 102:**

$2mF_o-DF_c$  (at 0.7 rmsd) in gray  
 $mF_o-DF_c$  (at 3 rmsd) in purple (negative)  
and green (positive)





## 6.5 Other polymers [i](#)

There are no such residues in this entry.