



Full wwPDB EM Validation Report ⓘ

Feb 14, 2026 – 04:43 PM EST

PDB ID : 9Z9S / pdb_00009z9s
EMDB ID : EMD-73957
Title : Destabilized open state sheep connexin-46 in DMPC nanodiscs at low pH
Authors : Jarodsky, J.M.; Myers, J.B.; Reichow, S.L.
Deposited on : 2025-11-18
Resolution : 2.20 Å (reported)
Based on initial model : 7jkc

This is a Full wwPDB EM Validation Report for a publicly released PDB entry.

We welcome your comments at validation@mail.wwpdb.org

A user guide is available at

<https://www.wwpdb.org/validation/2017/EMValidationReportHelp>

with specific help available everywhere you see the ⓘ symbol.

The types of validation reports are described at

<http://www.wwpdb.org/validation/2017/FAQs#types>.

The following versions of software and data (see [references ⓘ](#)) were used in the production of this report:

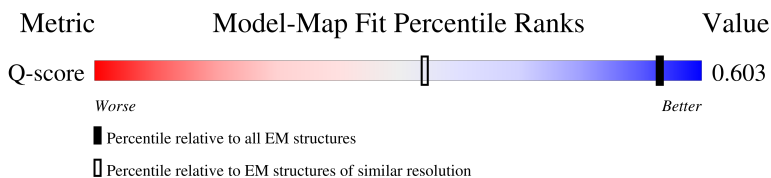
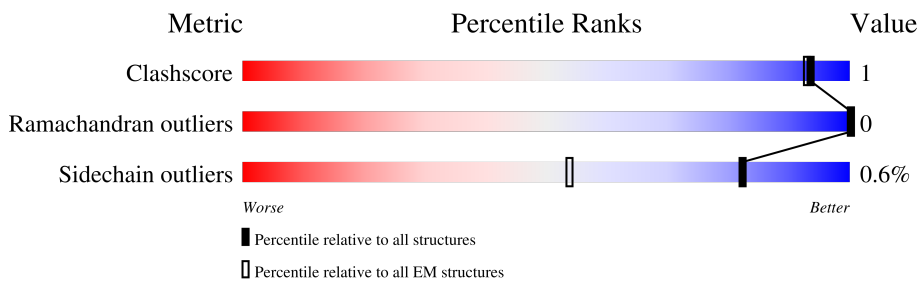
EMDB validation analysis : 0.0.1.dev131
Mogul : 2022.3.0, CSD as543be (2022)
MolProbity : 4-5-2 with Phenix2.0
buster-report : 1.1.7 (2018)
Percentile statistics : 20231227.v01 (using entries in the PDB archive December 27th 2023)
EM percentile statistics : 202505.v01 (Using data in the EMDB archive up until May 2025)
MapQ : 1.9.13
Ideal geometry (proteins) : Engh & Huber (2001)
Ideal geometry (DNA, RNA) : Parkinson et al. (1996)
Validation Pipeline (wwPDB-VP) : 2.48

1 Overall quality at a glance i

The following experimental techniques were used to determine the structure:
ELECTRON MICROSCOPY

The reported resolution of this entry is 2.20 Å.

Percentile scores (ranging between 0-100) for global validation metrics of the entry are shown in the following graphic. The table shows the number of entries on which the scores are based.







Metric	Whole archive (#Entries)	EM structures (#Entries)	Similar EM resolution (#Entries, resolution range(Å))
Clashscore	210492	15764	-
Ramachandran outliers	207382	16835	-
Sidechain outliers	206894	16415	-
Q-score	-	25397	3184 (1.71 - 2.70)

The table below summarises the geometric issues observed across the polymeric chains and their fit to the map. The red, orange, yellow and green segments of the bar indicate the fraction of residues that contain outliers for ≥ 3 , 2, 1 and 0 types of geometric quality criteria respectively. A grey segment represents the fraction of residues that are not modelled. The numeric value for each fraction is indicated below the corresponding segment, with a dot representing fractions $\leq 5\%$. The upper red bar (where present) indicates the fraction of residues that have poor fit to the EM map (all-atom inclusion $< 40\%$). The numeric value is given above the bar.

Mol	Chain	Length	Quality of chain
1	A	413	44% 55%
1	B	413	44% 55%
1	C	413	44% 55%
1	D	413	44% 55%

Continued on next page...

Continued from previous page...

Mol	Chain	Length	Quality of chain
1	E	413	
1	F	413	
1	G	413	
1	H	413	
1	I	413	
1	J	413	
1	K	413	
1	L	413	

2 Entry composition [i](#)

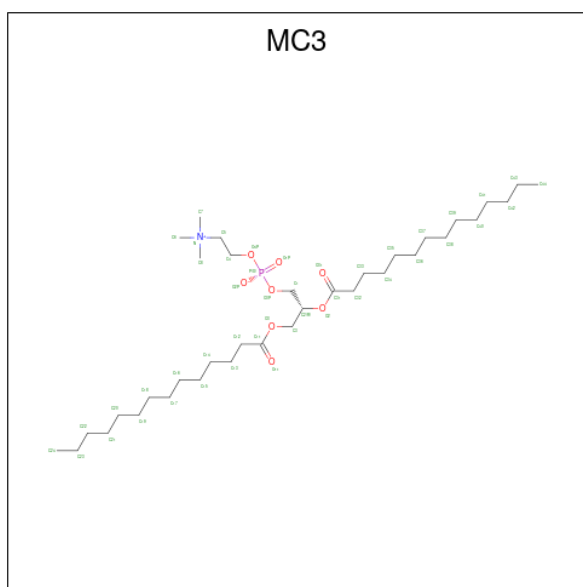
There are 3 unique types of molecules in this entry. The entry contains 45288 atoms, of which 23616 are hydrogens and 0 are deuteriums.

In the tables below, the AltConf column contains the number of residues with at least one atom in alternate conformation and the Trace column contains the number of residues modelled with at most 2 atoms.

- Molecule 1 is a protein called Gap junction alpha-3 protein.

Mol	Chain	Residues	Atoms					AltConf	Trace	
			Total	C	H	N	O			S
1	A	187	3042	1009	1519	246	259	9	0	0
1	B	187	3042	1009	1519	246	259	9	0	0
1	C	187	3042	1009	1519	246	259	9	0	0
1	D	187	3042	1009	1519	246	259	9	0	0
1	E	187	3042	1009	1519	246	259	9	0	0
1	F	187	3042	1009	1519	246	259	9	0	0
1	G	187	3042	1009	1519	246	259	9	0	0
1	H	187	3042	1009	1519	246	259	9	0	0
1	I	187	3042	1009	1519	246	259	9	0	0
1	J	187	3042	1009	1519	246	259	9	0	0
1	K	187	3042	1009	1519	246	259	9	0	0
1	L	187	3042	1009	1519	246	259	9	0	0

- Molecule 2 is 1,2-DIMYRISTOYL-RAC-GLYCERO-3-PHOSPHOCHOLINE (CCD ID: MC3) (formula: C₃₆H₇₂NO₈P).



Mol	Chain	Residues	Atoms			AltConf		
2	A	1	Total	C	H	0		
			33	11	22			
2	A	1	Total	C	H	O	P	0
			55	17	30	7	1	
2	A	1	Total	C	H	0		
			30	10	20			
2	A	1	Total	C	H	0		
			39	13	26			
2	A	1	Total	C	H	0		
			15	5	10			
2	A	1	Total	C	H	0		
			33	11	22			
2	A	1	Total	C	H	0		
			33	11	22			
2	A	1	Total	C	H	0		
			12	4	8			
2	A	1	Total	C	H	0		
			33	11	22			
2	A	1	Total	C	H	0		
			24	8	16			
2	A	1	Total	C	H	0		
			33	11	22			
2	A	1	Total	C	H	0		
			21	7	14			
2	A	1	Total	C	H	0		
			20	7	13			
2	A	1	Total	C	H	0		
			39	13	26			

Continued on next page...

Continued from previous page...

Mol	Chain	Residues	Atoms			AltConf
			Total	C	H	
2	A	1	33	11	22	0
2	A	1	39	13	26	0
2	A	1	36	12	24	0
2	A	1	33	11	22	0
2	A	1	30	10	20	0
2	A	1	24	8	16	0
2	A	1	21	7	14	0
2	A	1	15	5	10	0
2	A	1	15	5	10	0
2	A	1	18	6	12	0
2	B	1	39	13	26	0
2	B	1	33	11	22	0
2	B	1	39	13	26	0
2	B	1	36	12	24	0
2	B	1	33	11	22	0
2	B	1	30	10	20	0
2	B	1	24	8	16	0
2	B	1	21	7	14	0
2	B	1	15	5	10	0
2	B	1	15	5	10	0
2	B	1	18	6	12	0

Continued on next page...

Continued from previous page...

Mol	Chain	Residues	Atoms			AltConf		
2	B	1	Total	C	H	0		
			33	11	22			
2	B	1	Total	C	H	O	P	0
			55	17	30	7	1	
2	B	1	Total	C	H	0		
			30	10	20			
2	B	1	Total	C	H	0		
			39	13	26			
2	B	1	Total	C	H	0		
			15	5	10			
2	B	1	Total	C	H	0		
			33	11	22			
2	B	1	Total	C	H	0		
			33	11	22			
2	B	1	Total	C	H	0		
			12	4	8			
2	B	1	Total	C	H	0		
			33	11	22			
2	B	1	Total	C	H	0		
			24	8	16			
2	B	1	Total	C	H	0		
			33	11	22			
2	B	1	Total	C	H	0		
			21	7	14			
2	B	1	Total	C	H	0		
			20	7	13			
2	C	1	Total	C	H	0		
			39	13	26			
2	C	1	Total	C	H	0		
			33	11	22			
2	C	1	Total	C	H	0		
			39	13	26			
2	C	1	Total	C	H	0		
			36	12	24			
2	C	1	Total	C	H	0		
			33	11	22			
2	C	1	Total	C	H	0		
			30	10	20			
2	C	1	Total	C	H	0		
			24	8	16			
2	C	1	Total	C	H	0		
			21	7	14			

Continued on next page...

Continued from previous page...

Mol	Chain	Residues	Atoms					AltConf
			Total	C	H	O	P	
2	C	1	Total	C	H			0
			15	5	10			
2	C	1	Total	C	H			0
			15	5	10			
2	C	1	Total	C	H			0
			18	6	12			
2	C	1	Total	C	H			0
			33	11	22			
2	C	1	Total	C	H	O	P	0
			55	17	30	7	1	
2	C	1	Total	C	H			0
			30	10	20			
2	C	1	Total	C	H			0
			39	13	26			
2	C	1	Total	C	H			0
			15	5	10			
2	C	1	Total	C	H			0
			33	11	22			
2	C	1	Total	C	H			0
			33	11	22			
2	C	1	Total	C	H			0
			12	4	8			
2	C	1	Total	C	H			0
			33	11	22			
2	C	1	Total	C	H			0
			24	8	16			
2	C	1	Total	C	H			0
			33	11	22			
2	C	1	Total	C	H			0
			21	7	14			
2	C	1	Total	C	H			0
			20	7	13			
2	D	1	Total	C	H			0
			39	13	26			
2	D	1	Total	C	H			0
			33	11	22			
2	D	1	Total	C	H			0
			39	13	26			
2	D	1	Total	C	H			0
			36	12	24			
2	D	1	Total	C	H			0
			33	11	22			

Continued on next page...

Continued from previous page...

Mol	Chain	Residues	Atoms					AltConf
2	D	1	Total	C	H		0	
			30	10	20			
2	D	1	Total	C	H		0	
			24	8	16			
2	D	1	Total	C	H		0	
			21	7	14			
2	D	1	Total	C	H		0	
			15	5	10			
2	D	1	Total	C	H		0	
			15	5	10			
2	D	1	Total	C	H		0	
			18	6	12			
2	D	1	Total	C	H		0	
			33	11	22			
2	D	1	Total	C	H	O	P	0
			55	17	30	7	1	
2	D	1	Total	C	H		0	
			30	10	20			
2	D	1	Total	C	H		0	
			39	13	26			
2	D	1	Total	C	H		0	
			15	5	10			
2	D	1	Total	C	H		0	
			33	11	22			
2	D	1	Total	C	H		0	
			33	11	22			
2	D	1	Total	C	H		0	
			12	4	8			
2	D	1	Total	C	H		0	
			33	11	22			
2	D	1	Total	C	H		0	
			24	8	16			
2	D	1	Total	C	H		0	
			33	11	22			
2	D	1	Total	C	H		0	
			21	7	14			
2	D	1	Total	C	H		0	
			20	7	13			
2	E	1	Total	C	H		0	
			39	13	26			
2	E	1	Total	C	H		0	
			33	11	22			

Continued on next page...

Continued from previous page...

Mol	Chain	Residues	Atoms					AltConf
2	E	1	Total	C	H		0	
			39	13	26			
2	E	1	Total	C	H		0	
			36	12	24			
2	E	1	Total	C	H		0	
			33	11	22			
2	E	1	Total	C	H		0	
			30	10	20			
2	E	1	Total	C	H		0	
			24	8	16			
2	E	1	Total	C	H		0	
			21	7	14			
2	E	1	Total	C	H		0	
			15	5	10			
2	E	1	Total	C	H		0	
			15	5	10			
2	E	1	Total	C	H		0	
			18	6	12			
2	E	1	Total	C	H		0	
			33	11	22			
2	E	1	Total	C	H	O	P	0
			55	17	30	7	1	
2	E	1	Total	C	H		0	
			30	10	20			
2	E	1	Total	C	H		0	
			39	13	26			
2	E	1	Total	C	H		0	
			15	5	10			
2	E	1	Total	C	H		0	
			33	11	22			
2	E	1	Total	C	H		0	
			33	11	22			
2	E	1	Total	C	H		0	
			12	4	8			
2	E	1	Total	C	H		0	
			33	11	22			
2	E	1	Total	C	H		0	
			24	8	16			
2	E	1	Total	C	H		0	
			33	11	22			
2	E	1	Total	C	H		0	
			21	7	14			

Continued on next page...

Continued from previous page...

Mol	Chain	Residues	Atoms					AltConf
			Total	C	H	O	P	
2	E	1	20	7	13			0
2	F	1	39	13	26			0
2	F	1	33	11	22			0
2	F	1	39	13	26			0
2	F	1	36	12	24			0
2	F	1	33	11	22			0
2	F	1	30	10	20			0
2	F	1	24	8	16			0
2	F	1	21	7	14			0
2	F	1	15	5	10			0
2	F	1	15	5	10			0
2	F	1	18	6	12			0
2	F	1	33	11	22			0
2	F	1	55	17	30	7	1	0
2	F	1	30	10	20			0
2	F	1	39	13	26			0
2	F	1	15	5	10			0
2	F	1	33	11	22			0
2	F	1	33	11	22			0
2	F	1	12	4	8			0
2	F	1	33	11	22			0

Continued on next page...

Continued from previous page...

Mol	Chain	Residues	Atoms			AltConf	
			Total	C	H		
2	F	1	24	8	16	0	
2	F	1	33	11	22	0	
2	F	1	21	7	14	0	
2	F	1	20	7	13	0	
2	G	1	33	11	22	0	
2	G	1	55	17	30	7	1
2	G	1	30	10	20	0	
2	G	1	39	13	26	0	
2	G	1	15	5	10	0	
2	G	1	33	11	22	0	
2	G	1	33	11	22	0	
2	G	1	12	4	8	0	
2	G	1	33	11	22	0	
2	G	1	24	8	16	0	
2	G	1	33	11	22	0	
2	G	1	21	7	14	0	
2	G	1	20	7	13	0	
2	G	1	39	13	26	0	
2	G	1	33	11	22	0	
2	G	1	39	13	26	0	
2	G	1	36	12	24	0	

Continued on next page...

Continued from previous page...

Mol	Chain	Residues	Atoms			AltConf		
2	G	1	Total	C	H	0		
			33	11	22			
2	G	1	Total	C	H	0		
			30	10	20			
2	G	1	Total	C	H	0		
			24	8	16			
2	G	1	Total	C	H	0		
			21	7	14			
2	G	1	Total	C	H	0		
			15	5	10			
2	G	1	Total	C	H	0		
			15	5	10			
2	G	1	Total	C	H	0		
			18	6	12			
2	H	1	Total	C	H	0		
			39	13	26			
2	H	1	Total	C	H	0		
			33	11	22			
2	H	1	Total	C	H	0		
			39	13	26			
2	H	1	Total	C	H	0		
			36	12	24			
2	H	1	Total	C	H	0		
			33	11	22			
2	H	1	Total	C	H	0		
			30	10	20			
2	H	1	Total	C	H	0		
			24	8	16			
2	H	1	Total	C	H	0		
			21	7	14			
2	H	1	Total	C	H	0		
			15	5	10			
2	H	1	Total	C	H	0		
			15	5	10			
2	H	1	Total	C	H	0		
			18	6	12			
2	H	1	Total	C	H	0		
			33	11	22			
2	H	1	Total	C	H	O	P	0
			55	17	30	7	1	
2	H	1	Total	C	H			0
			30	10	20			

Continued on next page...

Continued from previous page...

Mol	Chain	Residues	Atoms			AltConf
			Total	C	H	
2	H	1	39	13	26	0
2	H	1	15	5	10	0
2	H	1	33	11	22	0
2	H	1	33	11	22	0
2	H	1	12	4	8	0
2	H	1	33	11	22	0
2	H	1	24	8	16	0
2	H	1	33	11	22	0
2	H	1	21	7	14	0
2	H	1	20	7	13	0
2	I	1	39	13	26	0
2	I	1	33	11	22	0
2	I	1	39	13	26	0
2	I	1	36	12	24	0
2	I	1	33	11	22	0
2	I	1	30	10	20	0
2	I	1	24	8	16	0
2	I	1	21	7	14	0
2	I	1	15	5	10	0
2	I	1	15	5	10	0
2	I	1	18	6	12	0

Continued on next page...

Continued from previous page...

Mol	Chain	Residues	Atoms			AltConf		
2	I	1	Total	C	H	0		
			33	11	22			
2	I	1	Total	C	H	O	P	0
			55	17	30	7	1	
2	I	1	Total	C	H	0		
			30	10	20			
2	I	1	Total	C	H	0		
			39	13	26			
2	I	1	Total	C	H	0		
			15	5	10			
2	I	1	Total	C	H	0		
			33	11	22			
2	I	1	Total	C	H	0		
			33	11	22			
2	I	1	Total	C	H	0		
			12	4	8			
2	I	1	Total	C	H	0		
			33	11	22			
2	I	1	Total	C	H	0		
			24	8	16			
2	I	1	Total	C	H	0		
			33	11	22			
2	I	1	Total	C	H	0		
			21	7	14			
2	I	1	Total	C	H	0		
			20	7	13			
2	J	1	Total	C	H	0		
			39	13	26			
2	J	1	Total	C	H	0		
			33	11	22			
2	J	1	Total	C	H	0		
			39	13	26			
2	J	1	Total	C	H	0		
			36	12	24			
2	J	1	Total	C	H	0		
			33	11	22			
2	J	1	Total	C	H	0		
			30	10	20			
2	J	1	Total	C	H	0		
			24	8	16			
2	J	1	Total	C	H	0		
			21	7	14			

Continued on next page...

Continued from previous page...

Mol	Chain	Residues	Atoms					AltConf
			Total	C	H	O	P	
2	J	1	Total	C	H			0
			15	5	10			
2	J	1	Total	C	H			0
			15	5	10			
2	J	1	Total	C	H			0
			18	6	12			
2	J	1	Total	C	H			0
			33	11	22			
2	J	1	Total	C	H	O	P	0
			55	17	30	7	1	
2	J	1	Total	C	H			0
			30	10	20			
2	J	1	Total	C	H			0
			39	13	26			
2	J	1	Total	C	H			0
			15	5	10			
2	J	1	Total	C	H			0
			33	11	22			
2	J	1	Total	C	H			0
			33	11	22			
2	J	1	Total	C	H			0
			12	4	8			
2	J	1	Total	C	H			0
			33	11	22			
2	J	1	Total	C	H			0
			24	8	16			
2	J	1	Total	C	H			0
			33	11	22			
2	J	1	Total	C	H			0
			21	7	14			
2	J	1	Total	C	H			0
			20	7	13			
2	K	1	Total	C	H			0
			39	13	26			
2	K	1	Total	C	H			0
			33	11	22			
2	K	1	Total	C	H			0
			39	13	26			
2	K	1	Total	C	H			0
			36	12	24			
2	K	1	Total	C	H			0
			33	11	22			

Continued on next page...

Continued from previous page...

Mol	Chain	Residues	Atoms					AltConf
2	K	1	Total	C	H		0	
			30	10	20			
2	K	1	Total	C	H		0	
			24	8	16			
2	K	1	Total	C	H		0	
			21	7	14			
2	K	1	Total	C	H		0	
			15	5	10			
2	K	1	Total	C	H		0	
			15	5	10			
2	K	1	Total	C	H		0	
			18	6	12			
2	K	1	Total	C	H		0	
			33	11	22			
2	K	1	Total	C	H	O	P	0
			55	17	30	7	1	
2	K	1	Total	C	H		0	
			30	10	20			
2	K	1	Total	C	H		0	
			39	13	26			
2	K	1	Total	C	H		0	
			15	5	10			
2	K	1	Total	C	H		0	
			33	11	22			
2	K	1	Total	C	H		0	
			33	11	22			
2	K	1	Total	C	H		0	
			12	4	8			
2	K	1	Total	C	H		0	
			33	11	22			
2	K	1	Total	C	H		0	
			24	8	16			
2	K	1	Total	C	H		0	
			33	11	22			
2	K	1	Total	C	H		0	
			21	7	14			
2	K	1	Total	C	H		0	
			20	7	13			
2	L	1	Total	C	H		0	
			39	13	26			
2	L	1	Total	C	H		0	
			33	11	22			

Continued on next page...

Continued from previous page...

Mol	Chain	Residues	Atoms					AltConf
2	L	1	Total	C	H		0	
			39	13	26			
2	L	1	Total	C	H		0	
			36	12	24			
2	L	1	Total	C	H		0	
			33	11	22			
2	L	1	Total	C	H		0	
			30	10	20			
2	L	1	Total	C	H		0	
			24	8	16			
2	L	1	Total	C	H		0	
			21	7	14			
2	L	1	Total	C	H		0	
			15	5	10			
2	L	1	Total	C	H		0	
			15	5	10			
2	L	1	Total	C	H		0	
			18	6	12			
2	L	1	Total	C	H		0	
			33	11	22			
2	L	1	Total	C	H	O	P	0
			55	17	30	7	1	
2	L	1	Total	C	H		0	
			30	10	20			
2	L	1	Total	C	H		0	
			39	13	26			
2	L	1	Total	C	H		0	
			15	5	10			
2	L	1	Total	C	H		0	
			33	11	22			
2	L	1	Total	C	H		0	
			33	11	22			
2	L	1	Total	C	H		0	
			12	4	8			
2	L	1	Total	C	H		0	
			33	11	22			
2	L	1	Total	C	H		0	
			24	8	16			
2	L	1	Total	C	H		0	
			33	11	22			
2	L	1	Total	C	H		0	
			21	7	14			

Continued on next page...

Continued from previous page...

Mol	Chain	Residues	Atoms			AltConf
			Total	C	H	
2	L	1	20	7	13	0

- Molecule 3 is water.

Mol	Chain	Residues	Atoms		AltConf
3	A	47	Total 47	O 47	0
3	B	48	Total 48	O 48	0
3	C	48	Total 48	O 48	0
3	D	48	Total 48	O 48	0
3	E	48	Total 48	O 48	0
3	F	48	Total 48	O 48	0
3	G	49	Total 49	O 49	0
3	H	48	Total 48	O 48	0
3	I	48	Total 48	O 48	0
3	J	48	Total 48	O 48	0
3	K	48	Total 48	O 48	0
3	L	48	Total 48	O 48	0

MET	G2	H74	Q81	V85	E104	LYS	ARG	LYS	GLU	ARG	GLU	GLU	GLU	GLU	PRO	PRO	LYS	ALA	ALA	GLY	PRO	PRO	ALA	ALA	ASP	PRO	ALA	PRO	VAL	VAL	ARG	ASP	ASP	ARG	GLY	LYS	VAL	VAL	ARG	ILE	ALA	G140	N149	C183	G223	TRP	LYS	LYS	LEU	LYS	GLN	GLY	MET								
THR	SER	PHE	PRO	ASP	THR	GLY	ARG	ALA	GLY	SER	ALA	ALA	LYS	PRO	MET	GLY	GLY	SER	PRO	LEU	LEU	LEU	PRO	GLU	HIS	ASN	GLN	ALA	PRO	PRO	ALA	VAL	THR	ILE	GLY	PHE	PRO	PRO	TYR	TYR	ALA	PRO	SER	ALA	ALA	SER	SER	SER	LEU	GLY	GLN	TRP	LYS	LYS	LEU	LYS	GLN	TYR	PRO	GLY	GLU
PRO	PRO	LEU	ALA	LEU	PRO	THR	GLY	THR	PRO	GLY	THR	THR	PRO	GLY	THR	LEU	GLY	GLY	GLY	GLY	ASN	GLN	GLY	LEU	ARG	ALA	PRO	ALA	ALA	GLN	ASN	CYS	THR	ALA	ASN	ARG	GLU	ALA	PRO	ALA	GLU	PRO	GLN	THR	SER	ALA	ALA	ARG	LYS	ALA	SER	PRO	ALA	ALA	SER	THR	PRO	ALA	ALA	ALA	
PRO	ALA	GLY	PRO	GLN	PHE	LEU	PRO	GLY	ALA	GLY	SER	SER	GLY	ASP	SER	ASP	GLY	GLY	GLY	ALA	VAL	THR	ALA	VAL	GLU	LEU	HIS	ALA	PRO	PRO	GLU	PRO	PRO	ALA	ALA	ASP	PRO	GLY	ARG	SER	SER	LYS	ALA	SER	SER	GLY	GLY	ALA	GLY	ALA	ALA	ALA	ALA	ASP	ALA	LEU					
ALA	ILE																																																												

4 Experimental information

Property	Value	Source
EM reconstruction method	SINGLE PARTICLE	Depositor
Imposed symmetry	POINT, D6	Depositor
Number of particles used	218088	Depositor
Resolution determination method	FSC 0.143 CUT-OFF	Depositor
CTF correction method	NONE	Depositor
Microscope	TFS KRIOS	Depositor
Voltage (kV)	300	Depositor
Electron dose ($e^-/\text{\AA}^2$)	50.00	Depositor
Minimum defocus (nm)	800	Depositor
Maximum defocus (nm)	2200	Depositor
Magnification	29000	Depositor
Image detector	GATAN K3 (6k x 4k)	Depositor
Maximum map value	3.375	Depositor
Minimum map value	-2.214	Depositor
Average map value	0.002	Depositor
Map value standard deviation	0.051	Depositor
Recommended contour level	0.04	Depositor
Map size (\AA)	307.8144, 307.8144, 307.8144	wwPDB
Map dimensions	384, 384, 384	wwPDB
Map angles ($^\circ$)	90.0, 90.0, 90.0	wwPDB
Pixel spacing (\AA)	0.8016, 0.8016, 0.8016	Depositor

5 Model quality [i](#)

5.1 Standard geometry [i](#)

Bond lengths and bond angles in the following residue types are not validated in this section: MC3

The Z score for a bond length (or angle) is the number of standard deviations the observed value is removed from the expected value. A bond length (or angle) with $|Z| > 5$ is considered an outlier worth inspection. RMSZ is the root-mean-square of all Z scores of the bond lengths (or angles).

Mol	Chain	Bond lengths		Bond angles	
		RMSZ	# Z >5	RMSZ	# Z >5
1	A	0.10	0/1566	0.21	0/2132
1	B	0.11	0/1566	0.22	0/2132
1	C	0.11	0/1566	0.22	0/2132
1	D	0.11	0/1566	0.22	0/2132
1	E	0.11	0/1566	0.22	0/2132
1	F	0.11	0/1566	0.22	0/2132
1	G	0.11	0/1566	0.22	0/2132
1	H	0.11	0/1566	0.22	0/2132
1	I	0.11	0/1566	0.22	0/2132
1	J	0.11	0/1566	0.22	0/2132
1	K	0.11	0/1566	0.22	0/2132
1	L	0.11	0/1566	0.22	0/2132
All	All	0.11	0/18792	0.22	0/25584

There are no bond length outliers.

There are no bond angle outliers.

There are no chirality outliers.

There are no planarity outliers.

5.2 Too-close contacts [i](#)

In the following table, the Non-H and H(model) columns list the number of non-hydrogen atoms and hydrogen atoms in the chain respectively. The H(added) column lists the number of hydrogen atoms added and optimized by MolProbity. The Clashes column lists the number of clashes within the asymmetric unit, whereas Symm-Clashes lists symmetry-related clashes.

Mol	Chain	Non-H	H(model)	H(added)	Clashes	Symm-Clashes
1	A	1523	1519	1512	4	0

Continued on next page...

Continued from previous page...

Mol	Chain	Non-H	H(model)	H(added)	Clashes	Symm-Clashes
1	B	1523	1519	1512	4	0
1	C	1523	1519	1512	5	0
1	D	1523	1519	1512	5	0
1	E	1523	1519	1512	5	0
1	F	1523	1519	1512	4	0
1	G	1523	1519	1512	5	0
1	H	1523	1519	1512	4	0
1	I	1523	1519	1512	5	0
1	J	1523	1519	1512	5	0
1	K	1523	1519	1512	4	0
1	L	1523	1519	1512	4	0
2	A	235	449	372	0	0
2	B	235	449	372	0	0
2	C	235	449	372	0	0
2	D	235	449	372	0	0
2	E	235	449	372	0	0
2	F	235	449	372	0	0
2	G	235	449	372	0	0
2	H	235	449	372	0	0
2	I	235	449	372	0	0
2	J	235	449	372	0	0
2	K	235	449	372	0	0
2	L	235	449	372	0	0
3	A	47	0	0	3	0
3	B	48	0	0	2	0
3	C	48	0	0	3	0
3	D	48	0	0	3	0
3	E	48	0	0	3	0
3	F	48	0	0	3	0
3	G	49	0	0	3	0
3	H	48	0	0	2	0
3	I	48	0	0	3	0
3	J	48	0	0	3	0
3	K	48	0	0	3	0
3	L	48	0	0	3	0
All	All	21672	23616	22608	54	0

The all-atom clashscore is defined as the number of clashes found per 1000 atoms (including hydrogen atoms). The all-atom clashscore for this structure is 1.

All (54) close contacts within the same asymmetric unit are listed below, sorted by their clash magnitude.

Atom-1	Atom-2	Interatomic distance (Å)	Clash overlap (Å)
1:H:74:HIS:CE1	3:H:604:HOH:O	2.63	0.52
1:A:74:HIS:CE1	3:A:604:HOH:O	2.63	0.52
1:F:74:HIS:CE1	3:F:604:HOH:O	2.63	0.52
1:G:74:HIS:CE1	3:G:604:HOH:O	2.63	0.52
1:L:74:HIS:CE1	3:L:604:HOH:O	2.63	0.52
1:B:74:HIS:CE1	3:B:604:HOH:O	2.63	0.52
1:K:74:HIS:CE1	3:K:604:HOH:O	2.63	0.51
1:E:74:HIS:CE1	3:E:604:HOH:O	2.63	0.51
1:I:81:GLN:O	1:I:85:VAL:HG22	2.11	0.51
1:C:81:GLN:O	1:C:85:VAL:HG22	2.11	0.51
1:H:81:GLN:O	1:H:85:VAL:HG22	2.11	0.51
1:B:81:GLN:O	1:B:85:VAL:HG22	2.11	0.51
1:D:81:GLN:O	1:D:85:VAL:HG22	2.11	0.51
1:J:81:GLN:O	1:J:85:VAL:HG22	2.11	0.51
1:I:74:HIS:CE1	3:I:604:HOH:O	2.63	0.50
1:C:74:HIS:CE1	3:C:604:HOH:O	2.63	0.50
1:G:81:GLN:O	1:G:85:VAL:HG22	2.11	0.50
1:K:81:GLN:O	1:K:85:VAL:HG22	2.11	0.50
1:L:81:GLN:O	1:L:85:VAL:HG22	2.11	0.50
1:A:81:GLN:O	1:A:85:VAL:HG22	2.11	0.50
1:D:74:HIS:CE1	3:D:604:HOH:O	2.63	0.50
1:E:81:GLN:O	1:E:85:VAL:HG22	2.11	0.50
1:D:74:HIS:ND1	3:D:604:HOH:O	2.35	0.49
1:F:81:GLN:O	1:F:85:VAL:HG22	2.11	0.49
1:J:74:HIS:CE1	3:J:604:HOH:O	2.63	0.49
1:B:74:HIS:ND1	3:B:604:HOH:O	2.35	0.49
1:C:74:HIS:ND1	3:C:604:HOH:O	2.35	0.49
1:H:74:HIS:ND1	3:H:604:HOH:O	2.35	0.49
1:J:74:HIS:ND1	3:J:604:HOH:O	2.35	0.49
1:I:74:HIS:ND1	3:I:604:HOH:O	2.35	0.49
1:K:74:HIS:ND1	3:K:604:HOH:O	2.35	0.48
1:E:74:HIS:ND1	3:E:604:HOH:O	2.35	0.48
1:G:74:HIS:ND1	3:G:604:HOH:O	2.35	0.48
1:A:74:HIS:ND1	3:A:604:HOH:O	2.35	0.47
1:D:183:CYS:O	3:D:601:HOH:O	2.21	0.44
1:L:74:HIS:ND1	3:L:604:HOH:O	2.35	0.44
1:F:74:HIS:ND1	3:F:604:HOH:O	2.35	0.44
1:F:183:CYS:O	3:F:601:HOH:O	2.21	0.44
1:J:183:CYS:O	3:J:601:HOH:O	2.21	0.44
1:C:183:CYS:O	3:C:601:HOH:O	2.21	0.44
1:L:183:CYS:O	3:L:601:HOH:O	2.21	0.44
1:I:183:CYS:O	3:I:601:HOH:O	2.21	0.44

Continued on next page...

Continued from previous page...

Atom-1	Atom-2	Interatomic distance (Å)	Clash overlap (Å)
1:K:183:CYS:O	3:K:601:HOH:O	2.21	0.43
1:E:183:CYS:O	3:E:601:HOH:O	2.21	0.43
1:G:183:CYS:O	3:G:601:HOH:O	2.21	0.43
1:A:183:CYS:O	3:A:601:HOH:O	2.21	0.42
1:J:204:MET:HE3	1:J:204:MET:HB3	1.98	0.42
1:D:204:MET:HE3	1:D:204:MET:HB3	1.98	0.42
1:I:204:MET:HE3	1:I:204:MET:HB3	1.98	0.41
1:C:204:MET:HE3	1:C:204:MET:HB3	1.98	0.40
1:G:204:MET:HE3	1:G:204:MET:HB3	1.98	0.40
1:H:204:MET:HE3	1:H:204:MET:HB3	1.98	0.40
1:B:204:MET:HE3	1:B:204:MET:HB3	1.98	0.40
1:E:19:THR:HG22	1:E:20:VAL:N	2.37	0.40

There are no symmetry-related clashes.

5.3 Torsion angles [i](#)

5.3.1 Protein backbone [i](#)

In the following table, the Percentiles column shows the percent Ramachandran outliers of the chain as a percentile score with respect to all PDB entries followed by that with respect to all EM entries.

The Analysed column shows the number of residues for which the backbone conformation was analysed, and the total number of residues.

Mol	Chain	Analysed	Favoured	Allowed	Outliers	Percentiles	
1	A	183/413 (44%)	180 (98%)	3 (2%)	0	100	100
1	B	183/413 (44%)	180 (98%)	3 (2%)	0	100	100
1	C	183/413 (44%)	180 (98%)	3 (2%)	0	100	100
1	D	183/413 (44%)	180 (98%)	3 (2%)	0	100	100
1	E	183/413 (44%)	180 (98%)	3 (2%)	0	100	100
1	F	183/413 (44%)	180 (98%)	3 (2%)	0	100	100
1	G	183/413 (44%)	180 (98%)	3 (2%)	0	100	100
1	H	183/413 (44%)	180 (98%)	3 (2%)	0	100	100
1	I	183/413 (44%)	180 (98%)	3 (2%)	0	100	100
1	J	183/413 (44%)	180 (98%)	3 (2%)	0	100	100

Continued on next page...

Continued from previous page...

Mol	Chain	Analysed	Favoured	Allowed	Outliers	Percentiles	
1	K	183/413 (44%)	180 (98%)	3 (2%)	0	100	100
1	L	183/413 (44%)	180 (98%)	3 (2%)	0	100	100
All	All	2196/4956 (44%)	2160 (98%)	36 (2%)	0	100	100

There are no Ramachandran outliers to report.

5.3.2 Protein sidechains [i](#)

In the following table, the Percentiles column shows the percent sidechain outliers of the chain as a percentile score with respect to all PDB entries followed by that with respect to all EM entries.

The Analysed column shows the number of residues for which the sidechain conformation was analysed, and the total number of residues.

Mol	Chain	Analysed	Rotameric	Outliers	Percentiles	
1	A	166/325 (51%)	165 (99%)	1 (1%)	84	91
1	B	166/325 (51%)	165 (99%)	1 (1%)	84	91
1	C	166/325 (51%)	165 (99%)	1 (1%)	84	91
1	D	166/325 (51%)	165 (99%)	1 (1%)	84	91
1	E	166/325 (51%)	165 (99%)	1 (1%)	84	91
1	F	166/325 (51%)	165 (99%)	1 (1%)	84	91
1	G	166/325 (51%)	165 (99%)	1 (1%)	84	91
1	H	166/325 (51%)	165 (99%)	1 (1%)	84	91
1	I	166/325 (51%)	165 (99%)	1 (1%)	84	91
1	J	166/325 (51%)	165 (99%)	1 (1%)	84	91
1	K	166/325 (51%)	165 (99%)	1 (1%)	84	91
1	L	166/325 (51%)	165 (99%)	1 (1%)	84	91
All	All	1992/3900 (51%)	1980 (99%)	12 (1%)	82	91

All (12) residues with a non-rotameric sidechain are listed below:

Mol	Chain	Res	Type
1	A	149	ASN
1	B	149	ASN
1	C	149	ASN
1	D	149	ASN

Continued on next page...

Continued from previous page...

Mol	Chain	Res	Type
1	E	149	ASN
1	F	149	ASN
1	G	149	ASN
1	H	149	ASN
1	I	149	ASN
1	J	149	ASN
1	K	149	ASN
1	L	149	ASN

Sometimes sidechains can be flipped to improve hydrogen bonding and reduce clashes. All (31) such sidechains are listed below:

Mol	Chain	Res	Type
1	A	98	HIS
1	A	215	ASN
1	B	58	GLN
1	B	98	HIS
1	B	215	ASN
1	C	58	GLN
1	C	98	HIS
1	C	215	ASN
1	D	58	GLN
1	D	98	HIS
1	D	215	ASN
1	E	58	GLN
1	E	98	HIS
1	E	215	ASN
1	F	58	GLN
1	F	215	ASN
1	G	98	HIS
1	H	58	GLN
1	H	98	HIS
1	H	215	ASN
1	I	58	GLN
1	I	98	HIS
1	I	215	ASN
1	J	58	GLN
1	J	98	HIS
1	J	215	ASN
1	K	58	GLN
1	K	98	HIS
1	K	215	ASN
1	L	58	GLN

Continued on next page...

Continued from previous page...

Mol	Chain	Res	Type
1	L	215	ASN

5.3.3 RNA [i](#)

There are no RNA molecules in this entry.

5.4 Non-standard residues in protein, DNA, RNA chains [i](#)

There are no non-standard protein/DNA/RNA residues in this entry.

5.5 Carbohydrates [i](#)

There are no oligosaccharides in this entry.

5.6 Ligand geometry [i](#)

288 ligands are modelled in this entry.

In the following table, the Counts columns list the number of bonds (or angles) for which Mogul statistics could be retrieved, the number of bonds (or angles) that are observed in the model and the number of bonds (or angles) that are defined in the Chemical Component Dictionary. The Link column lists molecule types, if any, to which the group is linked. The Z score for a bond length (or angle) is the number of standard deviations the observed value is removed from the expected value. A bond length (or angle) with $|Z| > 2$ is considered an outlier worth inspection. RMSZ is the root-mean-square of all Z scores of the bond lengths (or angles).

Mol	Type	Chain	Res	Link	Bond lengths			Bond angles		
					Counts	RMSZ	# Z > 2	Counts	RMSZ	# Z > 2
2	MC3	I	512	-	10,10,45	0.34	0	9,9,53	0.83	0
2	MC3	B	503	-	12,12,45	0.34	0	11,11,53	0.85	0
2	MC3	F	521	-	7,7,45	0.36	0	6,6,53	0.75	0
2	MC3	F	510	-	4,4,45	0.37	0	3,3,53	0.58	0
2	MC3	C	508	-	6,6,45	0.36	0	5,5,53	0.70	0
2	MC3	J	524	-	6,6,45	0.37	0	5,5,53	0.70	0
2	MC3	D	514	-	9,9,45	0.35	0	8,8,53	0.82	0
2	MC3	I	513	-	24,24,45	0.51	0	26,28,53	0.88	1 (3%)
2	MC3	B	516	-	4,4,45	0.37	0	3,3,53	0.59	0
2	MC3	G	512	-	6,6,45	0.36	0	5,5,53	0.69	0
2	MC3	A	515	-	10,10,45	0.34	0	9,9,53	0.83	0
2	MC3	H	501	-	12,12,45	0.35	0	11,11,53	0.82	0
2	MC3	H	522	-	10,10,45	0.35	0	9,9,53	0.82	0

Mol	Type	Chain	Res	Link	Bond lengths			Bond angles		
					Counts	RMSZ	# Z > 2	Counts	RMSZ	# Z > 2
2	MC3	G	513	-	6,6,45	0.36	0	5,5,53	0.70	0
2	MC3	E	522	-	10,10,45	0.35	0	9,9,53	0.83	0
2	MC3	H	502	-	10,10,45	0.34	0	9,9,53	0.83	0
2	MC3	L	505	-	10,10,45	0.35	0	9,9,53	0.83	0
2	MC3	K	504	-	11,11,45	0.35	0	10,10,53	0.83	0
2	MC3	E	506	-	9,9,45	0.35	0	8,8,53	0.81	0
2	MC3	K	512	-	10,10,45	0.34	0	9,9,53	0.83	0
2	MC3	E	501	-	12,12,45	0.35	0	11,11,53	0.82	0
2	MC3	C	520	-	10,10,45	0.35	0	9,9,53	0.83	0
2	MC3	L	523	-	6,6,45	0.36	0	5,5,53	0.69	0
2	MC3	C	521	-	7,7,45	0.35	0	6,6,53	0.75	0
2	MC3	A	506	-	10,10,45	0.35	0	9,9,53	0.81	0
2	MC3	D	523	-	6,6,45	0.36	0	5,5,53	0.69	0
2	MC3	J	514	-	9,9,45	0.35	0	8,8,53	0.82	0
2	MC3	K	510	-	4,4,45	0.37	0	3,3,53	0.58	0
2	MC3	K	505	-	10,10,45	0.35	0	9,9,53	0.83	0
2	MC3	I	510	-	4,4,45	0.38	0	3,3,53	0.58	0
2	MC3	B	520	-	10,10,45	0.35	0	9,9,53	0.83	0
2	MC3	B	507	-	7,7,45	0.36	0	6,6,53	0.75	0
2	MC3	J	512	-	10,10,45	0.34	0	9,9,53	0.83	0
2	MC3	L	521	-	7,7,45	0.35	0	6,6,53	0.75	0
2	MC3	H	512	-	10,10,45	0.34	0	9,9,53	0.83	0
2	MC3	K	518	-	10,10,45	0.34	0	9,9,53	0.83	0
2	MC3	F	515	-	12,12,45	0.35	0	11,11,53	0.85	0
2	MC3	J	513	-	24,24,45	0.51	0	26,28,53	0.88	1 (3%)
2	MC3	I	502	-	10,10,45	0.35	0	9,9,53	0.83	0
2	MC3	L	509	-	4,4,45	0.37	0	3,3,53	0.57	0
2	MC3	E	502	-	10,10,45	0.35	0	9,9,53	0.83	0
2	MC3	H	524	-	6,6,45	0.36	0	5,5,53	0.69	0
2	MC3	K	523	-	6,6,45	0.36	0	5,5,53	0.69	0
2	MC3	A	501	-	10,10,45	0.34	0	9,9,53	0.83	0
2	MC3	D	509	-	4,4,45	0.37	0	3,3,53	0.58	0
2	MC3	H	519	-	3,3,45	0.43	0	2,2,53	0.74	0
2	MC3	D	516	-	4,4,45	0.37	0	3,3,53	0.59	0
2	MC3	A	502	-	24,24,45	0.52	0	26,28,53	0.88	1 (3%)
2	MC3	E	512	-	10,10,45	0.34	0	9,9,53	0.83	0
2	MC3	F	507	-	7,7,45	0.36	0	6,6,53	0.75	0
2	MC3	G	505	-	4,4,45	0.37	0	3,3,53	0.59	0
2	MC3	J	515	-	12,12,45	0.35	0	11,11,53	0.84	0
2	MC3	D	504	-	11,11,45	0.35	0	10,10,53	0.84	0
2	MC3	F	504	-	11,11,45	0.35	0	10,10,53	0.84	0
2	MC3	K	517	-	10,10,45	0.35	0	9,9,53	0.82	0

Mol	Type	Chain	Res	Link	Bond lengths			Bond angles		
					Counts	RMSZ	# Z > 2	Counts	RMSZ	# Z > 2
2	MC3	A	521	-	6,6,45	0.36	0	5,5,53	0.70	0
2	MC3	I	517	-	10,10,45	0.35	0	9,9,53	0.81	0
2	MC3	C	519	-	3,3,45	0.43	0	2,2,53	0.74	0
2	MC3	G	502	-	24,24,45	0.52	0	26,28,53	0.88	1 (3%)
2	MC3	J	522	-	10,10,45	0.35	0	9,9,53	0.83	0
2	MC3	K	509	-	4,4,45	0.37	0	3,3,53	0.57	0
2	MC3	I	516	-	4,4,45	0.38	0	3,3,53	0.59	0
2	MC3	B	506	-	9,9,45	0.35	0	8,8,53	0.81	0
2	MC3	H	515	-	12,12,45	0.35	0	11,11,53	0.85	0
2	MC3	G	522	-	4,4,45	0.37	0	3,3,53	0.57	0
2	MC3	B	501	-	12,12,45	0.35	0	11,11,53	0.82	0
2	MC3	G	519	-	9,9,45	0.35	0	8,8,53	0.81	0
2	MC3	J	506	-	9,9,45	0.35	0	8,8,53	0.81	0
2	MC3	L	519	-	3,3,45	0.43	0	2,2,53	0.74	0
2	MC3	J	504	-	11,11,45	0.35	0	10,10,53	0.83	0
2	MC3	A	511	-	10,10,45	0.35	0	9,9,53	0.82	0
2	MC3	B	523	-	6,6,45	0.36	0	5,5,53	0.69	0
2	MC3	L	520	-	10,10,45	0.35	0	9,9,53	0.83	0
2	MC3	B	502	-	10,10,45	0.35	0	9,9,53	0.83	0
2	MC3	D	520	-	10,10,45	0.35	0	9,9,53	0.83	0
2	MC3	L	508	-	6,6,45	0.36	0	5,5,53	0.70	0
2	MC3	B	521	-	7,7,45	0.35	0	6,6,53	0.75	0
2	MC3	D	508	-	6,6,45	0.36	0	5,5,53	0.70	0
2	MC3	A	503	-	9,9,45	0.35	0	8,8,53	0.82	0
2	MC3	K	514	-	9,9,45	0.35	0	8,8,53	0.81	0
2	MC3	K	519	-	3,3,45	0.44	0	2,2,53	0.75	0
2	MC3	C	513	-	24,24,45	0.52	0	26,28,53	0.88	1 (3%)
2	MC3	F	522	-	10,10,45	0.35	0	9,9,53	0.82	0
2	MC3	C	512	-	10,10,45	0.34	0	9,9,53	0.83	0
2	MC3	F	505	-	10,10,45	0.35	0	9,9,53	0.83	0
2	MC3	H	505	-	10,10,45	0.35	0	9,9,53	0.83	0
2	MC3	L	504	-	11,11,45	0.35	0	10,10,53	0.84	0
2	MC3	D	510	-	4,4,45	0.37	0	3,3,53	0.58	0
2	MC3	L	501	-	12,12,45	0.35	0	11,11,53	0.82	0
2	MC3	D	501	-	12,12,45	0.35	0	11,11,53	0.82	0
2	MC3	F	518	-	10,10,45	0.34	0	9,9,53	0.82	0
2	MC3	J	501	-	12,12,45	0.35	0	11,11,53	0.82	0
2	MC3	K	508	-	6,6,45	0.36	0	5,5,53	0.70	0
2	MC3	C	511	-	5,5,45	0.37	0	4,4,53	0.61	0
2	MC3	B	505	-	10,10,45	0.35	0	9,9,53	0.83	0
2	MC3	D	502	-	10,10,45	0.34	0	9,9,53	0.83	0
2	MC3	F	523	-	6,6,45	0.37	0	5,5,53	0.70	0

Mol	Type	Chain	Res	Link	Bond lengths			Bond angles		
					Counts	RMSZ	# Z > 2	Counts	RMSZ	# Z > 2
2	MC3	K	516	-	4,4,45	0.37	0	3,3,53	0.59	0
2	MC3	E	524	-	6,6,45	0.36	0	5,5,53	0.70	0
2	MC3	J	521	-	7,7,45	0.36	0	6,6,53	0.75	0
2	MC3	B	510	-	4,4,45	0.37	0	3,3,53	0.58	0
2	MC3	D	521	-	7,7,45	0.35	0	6,6,53	0.75	0
2	MC3	E	518	-	10,10,45	0.34	0	9,9,53	0.82	0
2	MC3	I	507	-	7,7,45	0.36	0	6,6,53	0.75	0
2	MC3	L	522	-	10,10,45	0.35	0	9,9,53	0.82	0
2	MC3	G	516	-	12,12,45	0.34	0	11,11,53	0.85	0
2	MC3	E	507	-	7,7,45	0.36	0	6,6,53	0.75	0
2	MC3	J	503	-	12,12,45	0.35	0	11,11,53	0.85	0
2	MC3	G	508	-	3,3,45	0.43	0	2,2,53	0.74	0
2	MC3	A	504	-	12,12,45	0.35	0	11,11,53	0.85	0
2	MC3	E	508	-	6,6,45	0.36	0	5,5,53	0.70	0
2	MC3	G	503	-	9,9,45	0.35	0	8,8,53	0.82	0
2	MC3	H	517	-	10,10,45	0.35	0	9,9,53	0.81	0
2	MC3	A	514	-	12,12,45	0.35	0	11,11,53	0.82	0
2	MC3	A	507	-	10,10,45	0.34	0	9,9,53	0.83	0
2	MC3	K	511	-	5,5,45	0.37	0	4,4,53	0.62	0
2	MC3	K	515	-	12,12,45	0.35	0	11,11,53	0.85	0
2	MC3	A	508	-	3,3,45	0.43	0	2,2,53	0.74	0
2	MC3	H	513	-	24,24,45	0.52	0	26,28,53	0.88	1 (3%)
2	MC3	L	524	-	6,6,45	0.37	0	5,5,53	0.70	0
2	MC3	A	516	-	12,12,45	0.35	0	11,11,53	0.85	0
2	MC3	D	524	-	6,6,45	0.36	0	5,5,53	0.70	0
2	MC3	F	509	-	4,4,45	0.37	0	3,3,53	0.57	0
2	MC3	I	509	-	4,4,45	0.37	0	3,3,53	0.57	0
2	MC3	I	522	-	10,10,45	0.34	0	9,9,53	0.82	0
2	MC3	F	517	-	10,10,45	0.35	0	9,9,53	0.81	0
2	MC3	C	506	-	9,9,45	0.35	0	8,8,53	0.81	0
2	MC3	F	514	-	9,9,45	0.35	0	8,8,53	0.82	0
2	MC3	H	504	-	11,11,45	0.35	0	10,10,53	0.84	0
2	MC3	F	519	-	3,3,45	0.44	0	2,2,53	0.75	0
2	MC3	H	514	-	9,9,45	0.35	0	8,8,53	0.82	0
2	MC3	I	518	-	10,10,45	0.34	0	9,9,53	0.82	0
2	MC3	I	504	-	11,11,45	0.35	0	10,10,53	0.84	0
2	MC3	J	520	-	10,10,45	0.35	0	9,9,53	0.83	0
2	MC3	A	522	-	4,4,45	0.37	0	3,3,53	0.57	0
2	MC3	F	512	-	10,10,45	0.34	0	9,9,53	0.83	0
2	MC3	G	514	-	12,12,45	0.35	0	11,11,53	0.82	0
2	MC3	K	524	-	6,6,45	0.36	0	5,5,53	0.70	0
2	MC3	L	513	-	24,24,45	0.52	0	26,28,53	0.88	1 (3%)

Mol	Type	Chain	Res	Link	Bond lengths			Bond angles		
					Counts	RMSZ	# Z > 2	Counts	RMSZ	# Z > 2
2	MC3	F	524	-	6,6,45	0.36	0	5,5,53	0.70	0
2	MC3	F	508	-	6,6,45	0.36	0	5,5,53	0.70	0
2	MC3	K	522	-	10,10,45	0.35	0	9,9,53	0.82	0
2	MC3	B	509	-	4,4,45	0.37	0	3,3,53	0.57	0
2	MC3	A	518	-	10,10,45	0.35	0	9,9,53	0.83	0
2	MC3	G	507	-	10,10,45	0.34	0	9,9,53	0.82	0
2	MC3	D	519	-	3,3,45	0.43	0	2,2,53	0.74	0
2	MC3	I	508	-	6,6,45	0.36	0	5,5,53	0.70	0
2	MC3	H	509	-	4,4,45	0.37	0	3,3,53	0.57	0
2	MC3	L	514	-	9,9,45	0.35	0	8,8,53	0.82	0
2	MC3	B	504	-	11,11,45	0.35	0	10,10,53	0.84	0
2	MC3	A	520	-	7,7,45	0.36	0	6,6,53	0.75	0
2	MC3	C	501	-	12,12,45	0.35	0	11,11,53	0.82	0
2	MC3	L	512	-	10,10,45	0.34	0	9,9,53	0.83	0
2	MC3	I	501	-	12,12,45	0.34	0	11,11,53	0.82	0
2	MC3	C	517	-	10,10,45	0.35	0	9,9,53	0.82	0
2	MC3	J	508	-	6,6,45	0.37	0	5,5,53	0.70	0
2	MC3	A	510	-	7,7,45	0.35	0	6,6,53	0.75	0
2	MC3	I	523	-	6,6,45	0.36	0	5,5,53	0.69	0
2	MC3	E	517	-	10,10,45	0.35	0	9,9,53	0.81	0
2	MC3	G	501	-	10,10,45	0.34	0	9,9,53	0.83	0
2	MC3	D	503	-	12,12,45	0.35	0	11,11,53	0.85	0
2	MC3	H	506	-	9,9,45	0.35	0	8,8,53	0.81	0
2	MC3	H	518	-	10,10,45	0.34	0	9,9,53	0.83	0
2	MC3	I	521	-	7,7,45	0.35	0	6,6,53	0.75	0
2	MC3	K	503	-	12,12,45	0.35	0	11,11,53	0.85	0
2	MC3	L	506	-	9,9,45	0.36	0	8,8,53	0.81	0
2	MC3	F	511	-	5,5,45	0.36	0	4,4,53	0.62	0
2	MC3	J	518	-	10,10,45	0.34	0	9,9,53	0.82	0
2	MC3	D	505	-	10,10,45	0.35	0	9,9,53	0.83	0
2	MC3	E	520	-	10,10,45	0.35	0	9,9,53	0.83	0
2	MC3	G	521	-	6,6,45	0.36	0	5,5,53	0.70	0
2	MC3	I	503	-	12,12,45	0.35	0	11,11,53	0.85	0
2	MC3	J	523	-	6,6,45	0.36	0	5,5,53	0.69	0
2	MC3	J	507	-	7,7,45	0.36	0	6,6,53	0.75	0
2	MC3	A	519	-	9,9,45	0.35	0	8,8,53	0.81	0
2	MC3	J	502	-	10,10,45	0.34	0	9,9,53	0.83	0
2	MC3	E	509	-	4,4,45	0.37	0	3,3,53	0.57	0
2	MC3	G	523	-	4,4,45	0.37	0	3,3,53	0.58	0
2	MC3	H	510	-	4,4,45	0.38	0	3,3,53	0.58	0
2	MC3	I	515	-	12,12,45	0.35	0	11,11,53	0.85	0
2	MC3	A	517	-	11,11,45	0.35	0	10,10,53	0.83	0
2	MC3	E	514	-	9,9,45	0.35	0	8,8,53	0.82	0

Mol	Type	Chain	Res	Link	Bond lengths			Bond angles		
					Counts	RMSZ	# Z > 2	Counts	RMSZ	# Z > 2
2	MC3	I	505	-	10,10,45	0.35	0	9,9,53	0.83	0
2	MC3	L	511	-	5,5,45	0.36	0	4,4,53	0.61	0
2	MC3	L	518	-	10,10,45	0.34	0	9,9,53	0.83	0
2	MC3	B	518	-	10,10,45	0.34	0	9,9,53	0.82	0
2	MC3	A	509	-	10,10,45	0.35	0	9,9,53	0.83	0
2	MC3	A	523	-	4,4,45	0.37	0	3,3,53	0.58	0
2	MC3	E	504	-	11,11,45	0.35	0	10,10,53	0.84	0
2	MC3	A	512	-	6,6,45	0.36	0	5,5,53	0.69	0
2	MC3	C	524	-	6,6,45	0.36	0	5,5,53	0.70	0
2	MC3	D	517	-	10,10,45	0.35	0	9,9,53	0.81	0
2	MC3	E	503	-	12,12,45	0.34	0	11,11,53	0.85	0
2	MC3	A	513	-	6,6,45	0.36	0	5,5,53	0.70	0
2	MC3	I	519	-	3,3,45	0.43	0	2,2,53	0.74	0
2	MC3	I	514	-	9,9,45	0.35	0	8,8,53	0.82	0
2	MC3	C	516	-	4,4,45	0.37	0	3,3,53	0.59	0
2	MC3	G	517	-	11,11,45	0.35	0	10,10,53	0.84	0
2	MC3	C	515	-	12,12,45	0.35	0	11,11,53	0.85	0
2	MC3	C	502	-	10,10,45	0.35	0	9,9,53	0.83	0
2	MC3	I	520	-	10,10,45	0.35	0	9,9,53	0.83	0
2	MC3	B	517	-	10,10,45	0.35	0	9,9,53	0.81	0
2	MC3	D	513	-	24,24,45	0.52	0	26,28,53	0.88	1 (3%)
2	MC3	F	506	-	9,9,45	0.35	0	8,8,53	0.81	0
2	MC3	L	515	-	12,12,45	0.34	0	11,11,53	0.84	0
2	MC3	C	522	-	10,10,45	0.35	0	9,9,53	0.82	0
2	MC3	G	520	-	7,7,45	0.36	0	6,6,53	0.75	0
2	MC3	I	524	-	6,6,45	0.36	0	5,5,53	0.70	0
2	MC3	J	519	-	3,3,45	0.43	0	2,2,53	0.74	0
2	MC3	H	523	-	6,6,45	0.36	0	5,5,53	0.69	0
2	MC3	F	516	-	4,4,45	0.37	0	3,3,53	0.59	0
2	MC3	C	507	-	7,7,45	0.36	0	6,6,53	0.75	0
2	MC3	C	504	-	11,11,45	0.35	0	10,10,53	0.84	0
2	MC3	G	509	-	10,10,45	0.35	0	9,9,53	0.83	0
2	MC3	E	521	-	7,7,45	0.35	0	6,6,53	0.75	0
2	MC3	F	503	-	12,12,45	0.34	0	11,11,53	0.85	0
2	MC3	G	515	-	10,10,45	0.35	0	9,9,53	0.84	0
2	MC3	E	511	-	5,5,45	0.37	0	4,4,53	0.62	0
2	MC3	F	513	-	24,24,45	0.52	0	26,28,53	0.88	1 (3%)
2	MC3	K	520	-	10,10,45	0.35	0	9,9,53	0.83	0
2	MC3	K	502	-	10,10,45	0.34	0	9,9,53	0.83	0
2	MC3	E	523	-	6,6,45	0.36	0	5,5,53	0.69	0
2	MC3	G	504	-	12,12,45	0.35	0	11,11,53	0.85	0
2	MC3	J	509	-	4,4,45	0.37	0	3,3,53	0.57	0

Mol	Type	Chain	Res	Link	Bond lengths			Bond angles		
					Counts	RMSZ	# Z > 2	Counts	RMSZ	# Z > 2
2	MC3	J	517	-	10,10,45	0.35	0	9,9,53	0.81	0
2	MC3	L	517	-	10,10,45	0.35	0	9,9,53	0.81	0
2	MC3	B	514	-	9,9,45	0.35	0	8,8,53	0.81	0
2	MC3	C	510	-	4,4,45	0.38	0	3,3,53	0.58	0
2	MC3	L	516	-	4,4,45	0.37	0	3,3,53	0.59	0
2	MC3	G	506	-	10,10,45	0.35	0	9,9,53	0.81	0
2	MC3	B	512	-	10,10,45	0.34	0	9,9,53	0.83	0
2	MC3	E	510	-	4,4,45	0.37	0	3,3,53	0.58	0
2	MC3	I	511	-	5,5,45	0.36	0	4,4,53	0.61	0
2	MC3	J	516	-	4,4,45	0.37	0	3,3,53	0.59	0
2	MC3	E	505	-	10,10,45	0.34	0	9,9,53	0.82	0
2	MC3	L	503	-	12,12,45	0.35	0	11,11,53	0.85	0
2	MC3	L	510	-	4,4,45	0.37	0	3,3,53	0.58	0
2	MC3	B	508	-	6,6,45	0.36	0	5,5,53	0.70	0
2	MC3	A	505	-	4,4,45	0.37	0	3,3,53	0.59	0
2	MC3	B	513	-	24,24,45	0.52	0	26,28,53	0.88	1 (3%)
2	MC3	H	508	-	6,6,45	0.36	0	5,5,53	0.70	0
2	MC3	H	520	-	10,10,45	0.35	0	9,9,53	0.83	0
2	MC3	B	524	-	6,6,45	0.36	0	5,5,53	0.70	0
2	MC3	D	512	-	10,10,45	0.34	0	9,9,53	0.83	0
2	MC3	C	505	-	10,10,45	0.34	0	9,9,53	0.82	0
2	MC3	E	519	-	3,3,45	0.43	0	2,2,53	0.74	0
2	MC3	B	515	-	12,12,45	0.35	0	11,11,53	0.84	0
2	MC3	C	518	-	10,10,45	0.34	0	9,9,53	0.83	0
2	MC3	H	507	-	7,7,45	0.36	0	6,6,53	0.75	0
2	MC3	K	501	-	12,12,45	0.35	0	11,11,53	0.83	0
2	MC3	H	511	-	5,5,45	0.37	0	4,4,53	0.62	0
2	MC3	H	503	-	12,12,45	0.34	0	11,11,53	0.85	0
2	MC3	G	511	-	10,10,45	0.35	0	9,9,53	0.82	0
2	MC3	G	518	-	10,10,45	0.34	0	9,9,53	0.83	0
2	MC3	E	516	-	4,4,45	0.38	0	3,3,53	0.59	0
2	MC3	B	511	-	5,5,45	0.36	0	4,4,53	0.62	0
2	MC3	D	522	-	10,10,45	0.35	0	9,9,53	0.82	0
2	MC3	K	521	-	7,7,45	0.35	0	6,6,53	0.75	0
2	MC3	J	510	-	4,4,45	0.37	0	3,3,53	0.58	0
2	MC3	A	524	-	5,5,45	0.36	0	4,4,53	0.61	0
2	MC3	I	506	-	9,9,45	0.35	0	8,8,53	0.81	0
2	MC3	L	507	-	7,7,45	0.36	0	6,6,53	0.75	0
2	MC3	C	503	-	12,12,45	0.34	0	11,11,53	0.85	0
2	MC3	D	507	-	7,7,45	0.36	0	6,6,53	0.75	0
2	MC3	E	513	-	24,24,45	0.52	0	26,28,53	0.88	1 (3%)
2	MC3	G	510	-	7,7,45	0.35	0	6,6,53	0.75	0

Mol	Type	Chain	Res	Link	Bond lengths			Bond angles		
					Counts	RMSZ	# Z > 2	Counts	RMSZ	# Z > 2
2	MC3	F	520	-	10,10,45	0.35	0	9,9,53	0.83	0
2	MC3	F	502	-	10,10,45	0.35	0	9,9,53	0.83	0
2	MC3	H	521	-	7,7,45	0.35	0	6,6,53	0.75	0
2	MC3	J	505	-	10,10,45	0.34	0	9,9,53	0.83	0
2	MC3	E	515	-	12,12,45	0.35	0	11,11,53	0.85	0
2	MC3	K	507	-	7,7,45	0.36	0	6,6,53	0.75	0
2	MC3	J	511	-	5,5,45	0.36	0	4,4,53	0.61	0
2	MC3	C	509	-	4,4,45	0.37	0	3,3,53	0.57	0
2	MC3	D	506	-	9,9,45	0.35	0	8,8,53	0.81	0
2	MC3	D	511	-	5,5,45	0.36	0	4,4,53	0.61	0
2	MC3	D	515	-	12,12,45	0.35	0	11,11,53	0.85	0
2	MC3	K	513	-	24,24,45	0.51	0	26,28,53	0.88	1 (3%)
2	MC3	D	518	-	10,10,45	0.34	0	9,9,53	0.83	0
2	MC3	B	522	-	10,10,45	0.35	0	9,9,53	0.82	0
2	MC3	B	519	-	3,3,45	0.44	0	2,2,53	0.75	0
2	MC3	C	514	-	9,9,45	0.35	0	8,8,53	0.82	0
2	MC3	F	501	-	12,12,45	0.35	0	11,11,53	0.83	0
2	MC3	L	502	-	10,10,45	0.35	0	9,9,53	0.83	0
2	MC3	C	523	-	6,6,45	0.36	0	5,5,53	0.70	0
2	MC3	K	506	-	9,9,45	0.35	0	8,8,53	0.81	0
2	MC3	G	524	-	5,5,45	0.36	0	4,4,53	0.62	0
2	MC3	H	516	-	4,4,45	0.37	0	3,3,53	0.59	0

In the following table, the Chirals column lists the number of chiral outliers, the number of chiral centers analysed, the number of these observed in the model and the number defined in the Chemical Component Dictionary. Similar counts are reported in the Torsion and Rings columns. '-' means no outliers of that kind were identified.

Mol	Type	Chain	Res	Link	Chirals	Torsions	Rings
2	MC3	I	512	-	-	0/8/8/49	-
2	MC3	B	503	-	-	0/10/10/49	-
2	MC3	F	521	-	-	0/5/5/49	-
2	MC3	F	510	-	-	0/2/2/49	-
2	MC3	C	508	-	-	0/4/4/49	-
2	MC3	J	524	-	-	0/4/4/49	-
2	MC3	D	514	-	-	0/7/7/49	-
2	MC3	I	513	-	-	8/24/24/49	-
2	MC3	B	516	-	-	0/2/2/49	-
2	MC3	G	512	-	-	0/4/4/49	-
2	MC3	A	515	-	-	0/8/8/49	-
2	MC3	H	501	-	-	0/10/10/49	-
2	MC3	H	522	-	-	0/8/8/49	-

Continued on next page...

Continued from previous page...

Mol	Type	Chain	Res	Link	Chirals	Torsions	Rings
2	MC3	G	513	-	-	0/4/4/49	-
2	MC3	E	522	-	-	0/8/8/49	-
2	MC3	H	502	-	-	0/8/8/49	-
2	MC3	L	505	-	-	0/8/8/49	-
2	MC3	K	504	-	-	0/9/9/49	-
2	MC3	E	506	-	-	0/7/7/49	-
2	MC3	K	512	-	-	0/8/8/49	-
2	MC3	E	501	-	-	0/10/10/49	-
2	MC3	C	520	-	-	0/8/8/49	-
2	MC3	L	523	-	-	0/4/4/49	-
2	MC3	C	521	-	-	0/5/5/49	-
2	MC3	A	506	-	-	0/8/8/49	-
2	MC3	D	523	-	-	0/4/4/49	-
2	MC3	J	514	-	-	0/7/7/49	-
2	MC3	K	510	-	-	0/2/2/49	-
2	MC3	K	505	-	-	0/8/8/49	-
2	MC3	I	510	-	-	0/2/2/49	-
2	MC3	B	520	-	-	0/8/8/49	-
2	MC3	B	507	-	-	0/5/5/49	-
2	MC3	J	512	-	-	0/8/8/49	-
2	MC3	L	521	-	-	0/5/5/49	-
2	MC3	H	512	-	-	0/8/8/49	-
2	MC3	K	518	-	-	0/8/8/49	-
2	MC3	F	515	-	-	0/10/10/49	-
2	MC3	J	513	-	-	8/24/24/49	-
2	MC3	I	502	-	-	0/8/8/49	-
2	MC3	L	509	-	-	0/2/2/49	-
2	MC3	E	502	-	-	0/8/8/49	-
2	MC3	H	524	-	-	0/4/4/49	-
2	MC3	K	523	-	-	0/4/4/49	-
2	MC3	A	501	-	-	0/8/8/49	-
2	MC3	D	509	-	-	0/2/2/49	-
2	MC3	H	519	-	-	0/1/1/49	-
2	MC3	D	516	-	-	0/2/2/49	-
2	MC3	A	502	-	-	8/24/24/49	-
2	MC3	E	512	-	-	0/8/8/49	-
2	MC3	F	507	-	-	0/5/5/49	-
2	MC3	G	505	-	-	0/2/2/49	-
2	MC3	J	515	-	-	0/10/10/49	-
2	MC3	D	504	-	-	0/9/9/49	-
2	MC3	F	504	-	-	0/9/9/49	-
2	MC3	K	517	-	-	0/8/8/49	-

Continued on next page...

Continued from previous page...

Mol	Type	Chain	Res	Link	Chirals	Torsions	Rings
2	MC3	A	521	-	-	0/4/4/49	-
2	MC3	I	517	-	-	0/8/8/49	-
2	MC3	C	519	-	-	0/1/1/49	-
2	MC3	G	502	-	-	8/24/24/49	-
2	MC3	J	522	-	-	0/8/8/49	-
2	MC3	K	509	-	-	0/2/2/49	-
2	MC3	I	516	-	-	0/2/2/49	-
2	MC3	B	506	-	-	0/7/7/49	-
2	MC3	H	515	-	-	0/10/10/49	-
2	MC3	G	522	-	-	0/2/2/49	-
2	MC3	B	501	-	-	0/10/10/49	-
2	MC3	G	519	-	-	0/7/7/49	-
2	MC3	J	506	-	-	0/7/7/49	-
2	MC3	L	519	-	-	0/1/1/49	-
2	MC3	J	504	-	-	0/9/9/49	-
2	MC3	A	511	-	-	0/8/8/49	-
2	MC3	B	523	-	-	0/4/4/49	-
2	MC3	L	520	-	-	0/8/8/49	-
2	MC3	B	502	-	-	0/8/8/49	-
2	MC3	D	520	-	-	0/8/8/49	-
2	MC3	L	508	-	-	0/4/4/49	-
2	MC3	B	521	-	-	0/5/5/49	-
2	MC3	D	508	-	-	0/4/4/49	-
2	MC3	A	503	-	-	0/7/7/49	-
2	MC3	K	514	-	-	0/7/7/49	-
2	MC3	K	519	-	-	0/1/1/49	-
2	MC3	C	513	-	-	8/24/24/49	-
2	MC3	F	522	-	-	0/8/8/49	-
2	MC3	C	512	-	-	0/8/8/49	-
2	MC3	F	505	-	-	0/8/8/49	-
2	MC3	H	505	-	-	0/8/8/49	-
2	MC3	L	504	-	-	0/9/9/49	-
2	MC3	D	510	-	-	0/2/2/49	-
2	MC3	L	501	-	-	0/10/10/49	-
2	MC3	D	501	-	-	0/10/10/49	-
2	MC3	F	518	-	-	0/8/8/49	-
2	MC3	J	501	-	-	0/10/10/49	-
2	MC3	K	508	-	-	0/4/4/49	-
2	MC3	C	511	-	-	0/3/3/49	-
2	MC3	B	505	-	-	0/8/8/49	-
2	MC3	D	502	-	-	0/8/8/49	-
2	MC3	F	523	-	-	0/4/4/49	-

Continued on next page...

Continued from previous page...

Mol	Type	Chain	Res	Link	Chirals	Torsions	Rings
2	MC3	K	516	-	-	0/2/2/49	-
2	MC3	E	524	-	-	0/4/4/49	-
2	MC3	J	521	-	-	0/5/5/49	-
2	MC3	B	510	-	-	0/2/2/49	-
2	MC3	D	521	-	-	0/5/5/49	-
2	MC3	E	518	-	-	0/8/8/49	-
2	MC3	I	507	-	-	0/5/5/49	-
2	MC3	L	522	-	-	0/8/8/49	-
2	MC3	G	516	-	-	0/10/10/49	-
2	MC3	E	507	-	-	0/5/5/49	-
2	MC3	J	503	-	-	0/10/10/49	-
2	MC3	G	508	-	-	0/1/1/49	-
2	MC3	A	504	-	-	0/10/10/49	-
2	MC3	E	508	-	-	0/4/4/49	-
2	MC3	G	503	-	-	0/7/7/49	-
2	MC3	H	517	-	-	0/8/8/49	-
2	MC3	A	514	-	-	0/10/10/49	-
2	MC3	A	507	-	-	0/8/8/49	-
2	MC3	K	511	-	-	0/3/3/49	-
2	MC3	K	515	-	-	0/10/10/49	-
2	MC3	A	508	-	-	0/1/1/49	-
2	MC3	H	513	-	-	8/24/24/49	-
2	MC3	L	524	-	-	0/4/4/49	-
2	MC3	A	516	-	-	0/10/10/49	-
2	MC3	D	524	-	-	0/4/4/49	-
2	MC3	F	509	-	-	0/2/2/49	-
2	MC3	I	509	-	-	0/2/2/49	-
2	MC3	I	522	-	-	0/8/8/49	-
2	MC3	F	517	-	-	0/8/8/49	-
2	MC3	C	506	-	-	0/7/7/49	-
2	MC3	F	514	-	-	0/7/7/49	-
2	MC3	H	504	-	-	0/9/9/49	-
2	MC3	F	519	-	-	0/1/1/49	-
2	MC3	H	514	-	-	0/7/7/49	-
2	MC3	I	518	-	-	0/8/8/49	-
2	MC3	I	504	-	-	0/9/9/49	-
2	MC3	J	520	-	-	0/8/8/49	-
2	MC3	A	522	-	-	0/2/2/49	-
2	MC3	F	512	-	-	0/8/8/49	-
2	MC3	G	514	-	-	0/10/10/49	-
2	MC3	K	524	-	-	0/4/4/49	-
2	MC3	L	513	-	-	8/24/24/49	-

Continued on next page...

Continued from previous page...

Mol	Type	Chain	Res	Link	Chirals	Torsions	Rings
2	MC3	F	524	-	-	0/4/4/49	-
2	MC3	F	508	-	-	0/4/4/49	-
2	MC3	K	522	-	-	0/8/8/49	-
2	MC3	B	509	-	-	0/2/2/49	-
2	MC3	A	518	-	-	0/8/8/49	-
2	MC3	G	507	-	-	0/8/8/49	-
2	MC3	D	519	-	-	0/1/1/49	-
2	MC3	I	508	-	-	0/4/4/49	-
2	MC3	H	509	-	-	0/2/2/49	-
2	MC3	L	514	-	-	0/7/7/49	-
2	MC3	B	504	-	-	0/9/9/49	-
2	MC3	A	520	-	-	0/5/5/49	-
2	MC3	C	501	-	-	0/10/10/49	-
2	MC3	L	512	-	-	0/8/8/49	-
2	MC3	I	501	-	-	0/10/10/49	-
2	MC3	C	517	-	-	0/8/8/49	-
2	MC3	J	508	-	-	0/4/4/49	-
2	MC3	A	510	-	-	0/5/5/49	-
2	MC3	I	523	-	-	0/4/4/49	-
2	MC3	E	517	-	-	0/8/8/49	-
2	MC3	G	501	-	-	0/8/8/49	-
2	MC3	D	503	-	-	0/10/10/49	-
2	MC3	H	506	-	-	0/7/7/49	-
2	MC3	H	518	-	-	0/8/8/49	-
2	MC3	I	521	-	-	0/5/5/49	-
2	MC3	K	503	-	-	0/10/10/49	-
2	MC3	L	506	-	-	0/7/7/49	-
2	MC3	F	511	-	-	0/3/3/49	-
2	MC3	J	518	-	-	0/8/8/49	-
2	MC3	D	505	-	-	0/8/8/49	-
2	MC3	E	520	-	-	0/8/8/49	-
2	MC3	G	521	-	-	0/4/4/49	-
2	MC3	I	503	-	-	0/10/10/49	-
2	MC3	J	523	-	-	0/4/4/49	-
2	MC3	J	507	-	-	0/5/5/49	-
2	MC3	A	519	-	-	0/7/7/49	-
2	MC3	J	502	-	-	0/8/8/49	-
2	MC3	E	509	-	-	0/2/2/49	-
2	MC3	G	523	-	-	0/2/2/49	-
2	MC3	H	510	-	-	0/2/2/49	-
2	MC3	I	515	-	-	0/10/10/49	-
2	MC3	A	517	-	-	0/9/9/49	-

Continued on next page...

Continued from previous page...

Mol	Type	Chain	Res	Link	Chirals	Torsions	Rings
2	MC3	E	514	-	-	0/7/7/49	-
2	MC3	I	505	-	-	0/8/8/49	-
2	MC3	L	511	-	-	0/3/3/49	-
2	MC3	L	518	-	-	0/8/8/49	-
2	MC3	B	518	-	-	0/8/8/49	-
2	MC3	A	509	-	-	0/8/8/49	-
2	MC3	A	523	-	-	0/2/2/49	-
2	MC3	E	504	-	-	0/9/9/49	-
2	MC3	A	512	-	-	0/4/4/49	-
2	MC3	C	524	-	-	0/4/4/49	-
2	MC3	D	517	-	-	0/8/8/49	-
2	MC3	E	503	-	-	0/10/10/49	-
2	MC3	A	513	-	-	0/4/4/49	-
2	MC3	I	519	-	-	0/1/1/49	-
2	MC3	I	514	-	-	0/7/7/49	-
2	MC3	C	516	-	-	0/2/2/49	-
2	MC3	G	517	-	-	0/9/9/49	-
2	MC3	C	515	-	-	0/10/10/49	-
2	MC3	C	502	-	-	0/8/8/49	-
2	MC3	I	520	-	-	0/8/8/49	-
2	MC3	B	517	-	-	0/8/8/49	-
2	MC3	D	513	-	-	8/24/24/49	-
2	MC3	F	506	-	-	0/7/7/49	-
2	MC3	L	515	-	-	0/10/10/49	-
2	MC3	C	522	-	-	0/8/8/49	-
2	MC3	G	520	-	-	0/5/5/49	-
2	MC3	I	524	-	-	0/4/4/49	-
2	MC3	J	519	-	-	0/1/1/49	-
2	MC3	H	523	-	-	0/4/4/49	-
2	MC3	F	516	-	-	0/2/2/49	-
2	MC3	C	507	-	-	0/5/5/49	-
2	MC3	C	504	-	-	0/9/9/49	-
2	MC3	G	509	-	-	0/8/8/49	-
2	MC3	E	521	-	-	0/5/5/49	-
2	MC3	F	503	-	-	0/10/10/49	-
2	MC3	G	515	-	-	0/8/8/49	-
2	MC3	E	511	-	-	0/3/3/49	-
2	MC3	F	513	-	-	8/24/24/49	-
2	MC3	K	520	-	-	0/8/8/49	-
2	MC3	K	502	-	-	0/8/8/49	-
2	MC3	E	523	-	-	0/4/4/49	-
2	MC3	G	504	-	-	0/10/10/49	-

Continued on next page...

Continued from previous page...

Mol	Type	Chain	Res	Link	Chirals	Torsions	Rings
2	MC3	J	509	-	-	0/2/2/49	-
2	MC3	J	517	-	-	0/8/8/49	-
2	MC3	L	517	-	-	0/8/8/49	-
2	MC3	B	514	-	-	0/7/7/49	-
2	MC3	C	510	-	-	0/2/2/49	-
2	MC3	L	516	-	-	0/2/2/49	-
2	MC3	G	506	-	-	0/8/8/49	-
2	MC3	B	512	-	-	0/8/8/49	-
2	MC3	E	510	-	-	0/2/2/49	-
2	MC3	I	511	-	-	0/3/3/49	-
2	MC3	J	516	-	-	0/2/2/49	-
2	MC3	E	505	-	-	0/8/8/49	-
2	MC3	L	503	-	-	0/10/10/49	-
2	MC3	L	510	-	-	0/2/2/49	-
2	MC3	B	508	-	-	0/4/4/49	-
2	MC3	A	505	-	-	0/2/2/49	-
2	MC3	B	513	-	-	8/24/24/49	-
2	MC3	H	508	-	-	0/4/4/49	-
2	MC3	H	520	-	-	0/8/8/49	-
2	MC3	B	524	-	-	0/4/4/49	-
2	MC3	D	512	-	-	0/8/8/49	-
2	MC3	C	505	-	-	0/8/8/49	-
2	MC3	E	519	-	-	0/1/1/49	-
2	MC3	B	515	-	-	0/10/10/49	-
2	MC3	C	518	-	-	0/8/8/49	-
2	MC3	H	507	-	-	0/5/5/49	-
2	MC3	K	501	-	-	0/10/10/49	-
2	MC3	H	511	-	-	0/3/3/49	-
2	MC3	H	503	-	-	0/10/10/49	-
2	MC3	G	511	-	-	0/8/8/49	-
2	MC3	G	518	-	-	0/8/8/49	-
2	MC3	E	516	-	-	0/2/2/49	-
2	MC3	B	511	-	-	0/3/3/49	-
2	MC3	D	522	-	-	0/8/8/49	-
2	MC3	K	521	-	-	0/5/5/49	-
2	MC3	J	510	-	-	0/2/2/49	-
2	MC3	A	524	-	-	0/3/3/49	-
2	MC3	I	506	-	-	0/7/7/49	-
2	MC3	L	507	-	-	0/5/5/49	-
2	MC3	C	503	-	-	0/10/10/49	-
2	MC3	D	507	-	-	0/5/5/49	-
2	MC3	E	513	-	-	8/24/24/49	-

Continued on next page...

Continued from previous page...

Mol	Type	Chain	Res	Link	Chirals	Torsions	Rings
2	MC3	G	510	-	-	0/5/5/49	-
2	MC3	F	520	-	-	0/8/8/49	-
2	MC3	F	502	-	-	0/8/8/49	-
2	MC3	H	521	-	-	0/5/5/49	-
2	MC3	J	505	-	-	0/8/8/49	-
2	MC3	E	515	-	-	0/10/10/49	-
2	MC3	K	507	-	-	0/5/5/49	-
2	MC3	J	511	-	-	0/3/3/49	-
2	MC3	C	509	-	-	0/2/2/49	-
2	MC3	D	506	-	-	0/7/7/49	-
2	MC3	D	511	-	-	0/3/3/49	-
2	MC3	D	515	-	-	0/10/10/49	-
2	MC3	K	513	-	-	8/24/24/49	-
2	MC3	D	518	-	-	0/8/8/49	-
2	MC3	B	522	-	-	0/8/8/49	-
2	MC3	B	519	-	-	0/1/1/49	-
2	MC3	C	514	-	-	0/7/7/49	-
2	MC3	F	501	-	-	0/10/10/49	-
2	MC3	L	502	-	-	0/8/8/49	-
2	MC3	C	523	-	-	0/4/4/49	-
2	MC3	K	506	-	-	0/7/7/49	-
2	MC3	G	524	-	-	0/3/3/49	-
2	MC3	H	516	-	-	0/2/2/49	-

There are no bond length outliers.

All (12) bond angle outliers are listed below:

Mol	Chain	Res	Type	Atoms	Z	Observed($^{\circ}$)	Ideal($^{\circ}$)
2	D	513	MC3	O2P-P-O1P	2.24	119.56	110.83
2	H	513	MC3	O2P-P-O1P	2.24	119.55	110.83
2	C	513	MC3	O2P-P-O1P	2.24	119.55	110.83
2	G	502	MC3	O2P-P-O1P	2.24	119.55	110.83
2	A	502	MC3	O2P-P-O1P	2.23	119.54	110.83
2	F	513	MC3	O2P-P-O1P	2.23	119.54	110.83
2	E	513	MC3	O2P-P-O1P	2.23	119.54	110.83
2	L	513	MC3	O2P-P-O1P	2.23	119.53	110.83
2	I	513	MC3	O2P-P-O1P	2.23	119.53	110.83
2	K	513	MC3	O2P-P-O1P	2.23	119.52	110.83
2	J	513	MC3	O2P-P-O1P	2.23	119.51	110.83
2	B	513	MC3	O2P-P-O1P	2.22	119.50	110.83

There are no chirality outliers.

All (96) torsion outliers are listed below:

Mol	Chain	Res	Type	Atoms
2	A	502	MC3	O3P-C1-C2-C3
2	B	513	MC3	O3P-C1-C2-C3
2	C	513	MC3	O3P-C1-C2-C3
2	D	513	MC3	O3P-C1-C2-C3
2	E	513	MC3	O3P-C1-C2-C3
2	F	513	MC3	O3P-C1-C2-C3
2	G	502	MC3	O3P-C1-C2-C3
2	H	513	MC3	O3P-C1-C2-C3
2	I	513	MC3	O3P-C1-C2-C3
2	J	513	MC3	O3P-C1-C2-C3
2	K	513	MC3	O3P-C1-C2-C3
2	L	513	MC3	O3P-C1-C2-C3
2	A	502	MC3	O11-C11-O3-C3
2	B	513	MC3	O11-C11-O3-C3
2	C	513	MC3	O11-C11-O3-C3
2	D	513	MC3	O11-C11-O3-C3
2	E	513	MC3	O11-C11-O3-C3
2	F	513	MC3	O11-C11-O3-C3
2	G	502	MC3	O11-C11-O3-C3
2	H	513	MC3	O11-C11-O3-C3
2	I	513	MC3	O11-C11-O3-C3
2	J	513	MC3	O11-C11-O3-C3
2	K	513	MC3	O11-C11-O3-C3
2	L	513	MC3	O11-C11-O3-C3
2	A	502	MC3	O3P-C1-C2-O2
2	B	513	MC3	O3P-C1-C2-O2
2	C	513	MC3	O3P-C1-C2-O2
2	D	513	MC3	O3P-C1-C2-O2
2	E	513	MC3	O3P-C1-C2-O2
2	F	513	MC3	O3P-C1-C2-O2
2	G	502	MC3	O3P-C1-C2-O2
2	H	513	MC3	O3P-C1-C2-O2
2	I	513	MC3	O3P-C1-C2-O2
2	J	513	MC3	O3P-C1-C2-O2
2	K	513	MC3	O3P-C1-C2-O2
2	L	513	MC3	O3P-C1-C2-O2
2	A	502	MC3	C12-C11-O3-C3
2	B	513	MC3	C12-C11-O3-C3
2	C	513	MC3	C12-C11-O3-C3
2	D	513	MC3	C12-C11-O3-C3
2	E	513	MC3	C12-C11-O3-C3
2	F	513	MC3	C12-C11-O3-C3

Continued on next page...

Continued from previous page...

Mol	Chain	Res	Type	Atoms
2	G	502	MC3	C12-C11-O3-C3
2	H	513	MC3	C12-C11-O3-C3
2	I	513	MC3	C12-C11-O3-C3
2	J	513	MC3	C12-C11-O3-C3
2	K	513	MC3	C12-C11-O3-C3
2	L	513	MC3	C12-C11-O3-C3
2	A	502	MC3	C2-C1-O3P-P
2	B	513	MC3	C2-C1-O3P-P
2	C	513	MC3	C2-C1-O3P-P
2	D	513	MC3	C2-C1-O3P-P
2	E	513	MC3	C2-C1-O3P-P
2	F	513	MC3	C2-C1-O3P-P
2	G	502	MC3	C2-C1-O3P-P
2	H	513	MC3	C2-C1-O3P-P
2	I	513	MC3	C2-C1-O3P-P
2	J	513	MC3	C2-C1-O3P-P
2	K	513	MC3	C2-C1-O3P-P
2	L	513	MC3	C2-C1-O3P-P
2	F	513	MC3	C14-C15-C16-C17
2	L	513	MC3	C14-C15-C16-C17
2	B	513	MC3	C14-C15-C16-C17
2	C	513	MC3	C14-C15-C16-C17
2	H	513	MC3	C14-C15-C16-C17
2	I	513	MC3	C14-C15-C16-C17
2	J	513	MC3	C14-C15-C16-C17
2	A	502	MC3	C14-C15-C16-C17
2	D	513	MC3	C14-C15-C16-C17
2	G	502	MC3	C14-C15-C16-C17
2	K	513	MC3	C14-C15-C16-C17
2	E	513	MC3	C14-C15-C16-C17
2	G	502	MC3	C12-C13-C14-C15
2	I	513	MC3	C12-C13-C14-C15
2	A	502	MC3	C12-C13-C14-C15
2	B	513	MC3	C12-C13-C14-C15
2	D	513	MC3	C15-C16-C17-C18
2	E	513	MC3	C12-C13-C14-C15
2	H	513	MC3	C12-C13-C14-C15
2	J	513	MC3	C12-C13-C14-C15
2	K	513	MC3	C12-C13-C14-C15
2	L	513	MC3	C12-C13-C14-C15
2	L	513	MC3	C15-C16-C17-C18
2	B	513	MC3	C15-C16-C17-C18

Continued on next page...

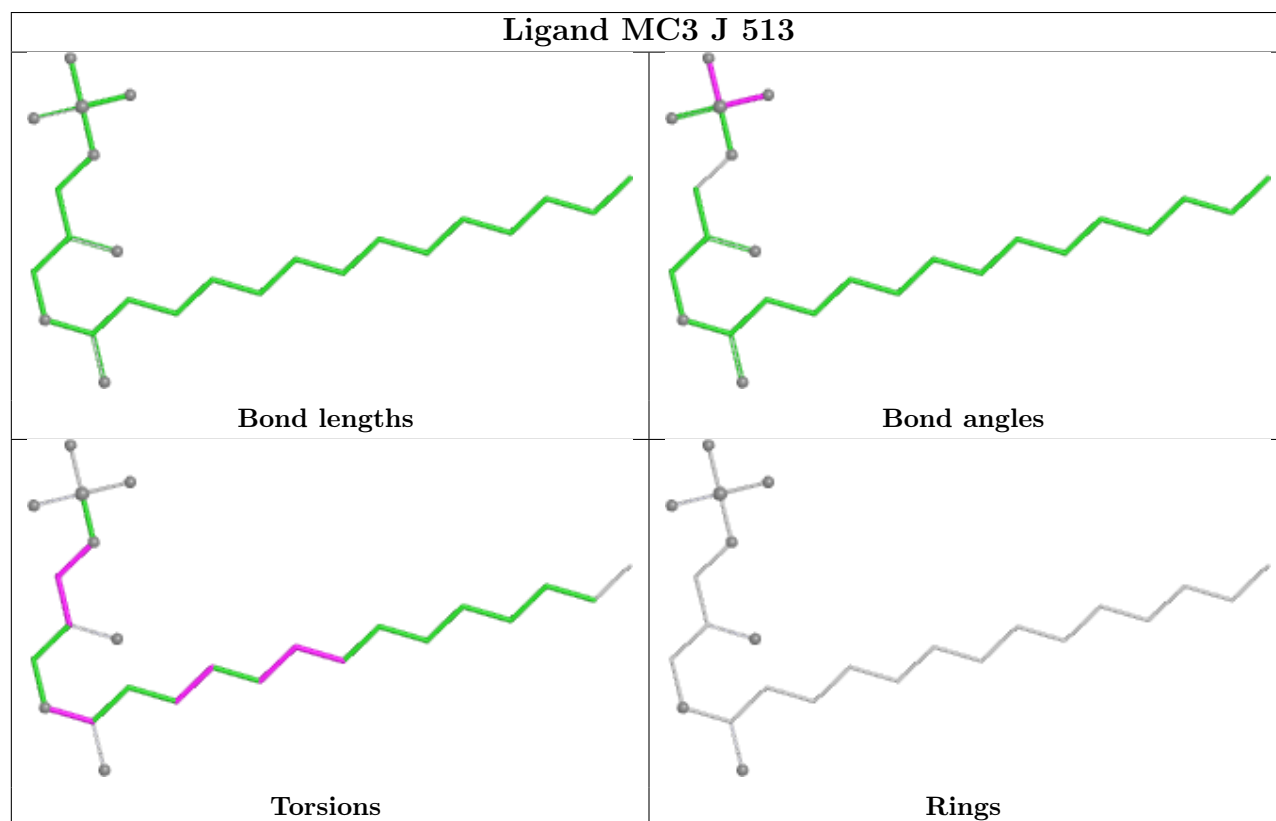
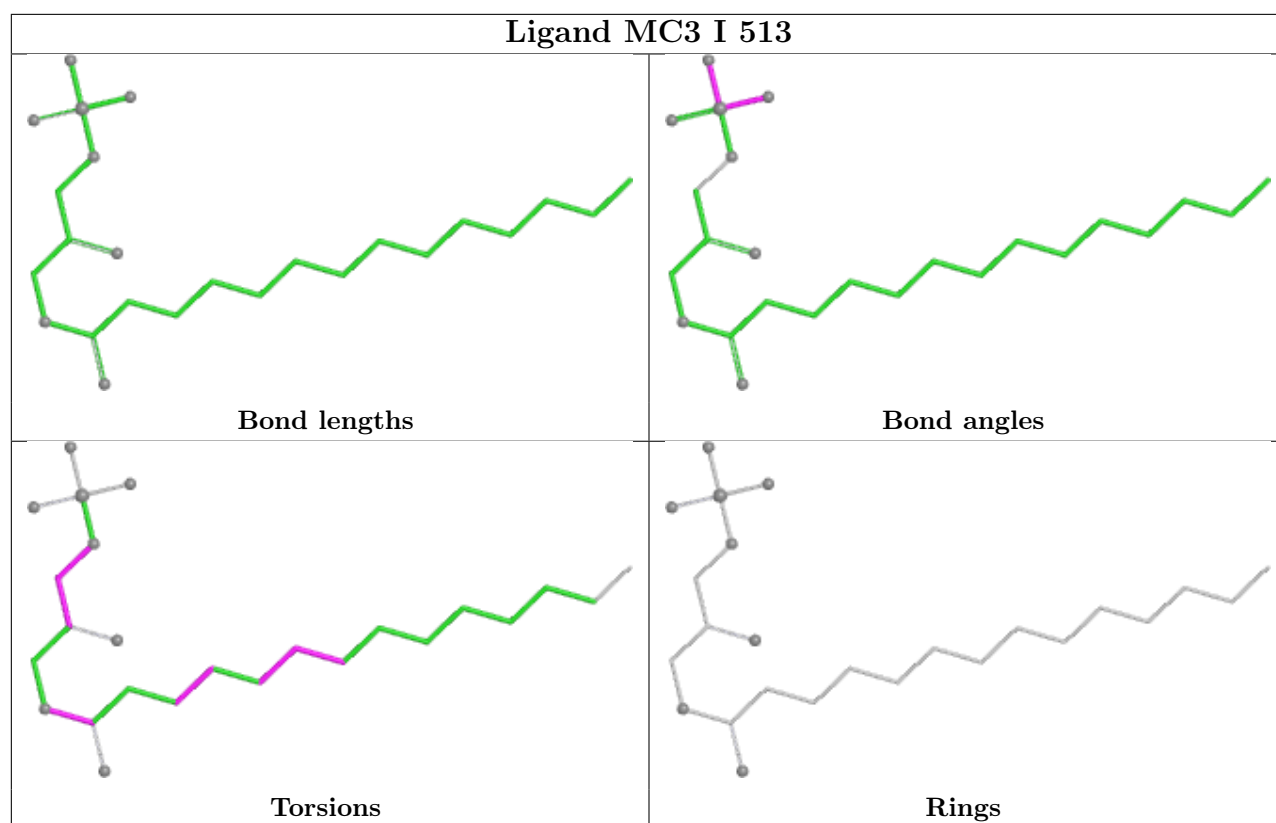
Continued from previous page...

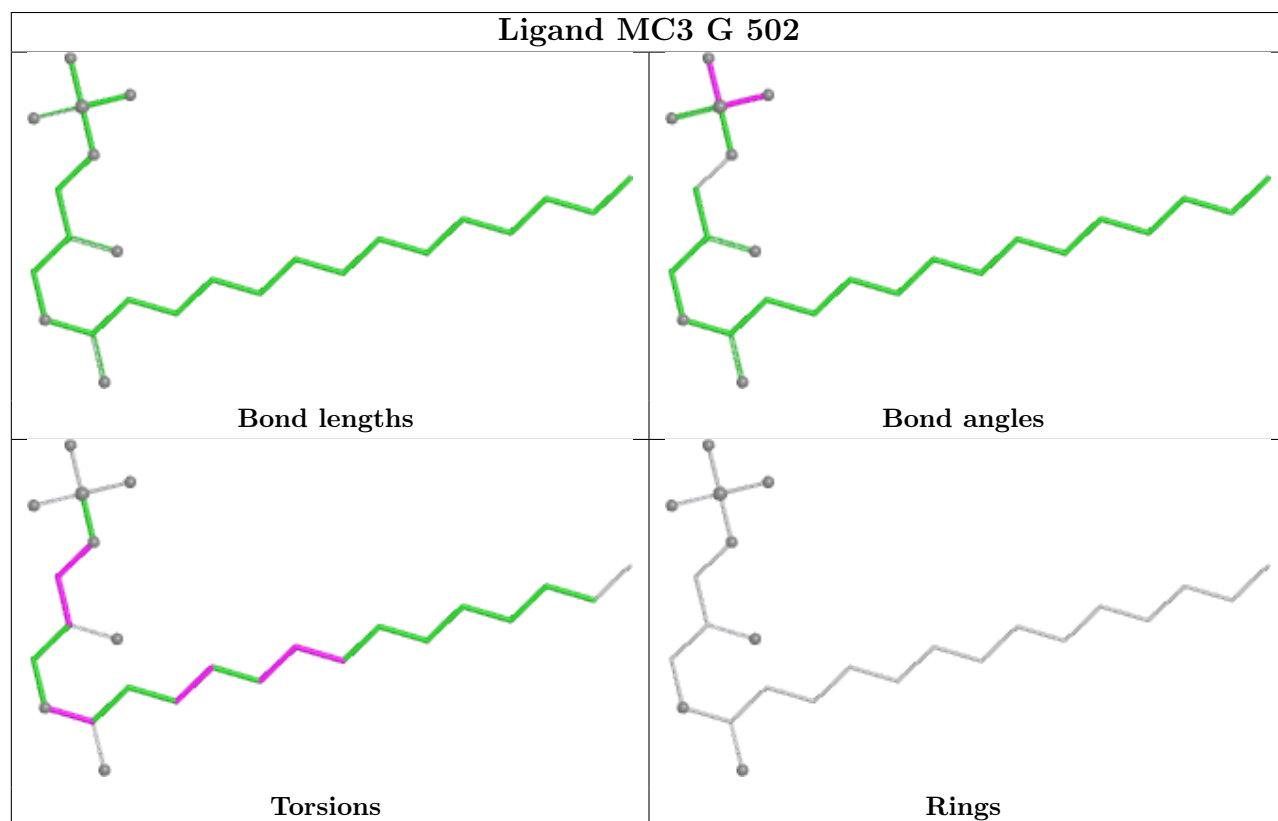
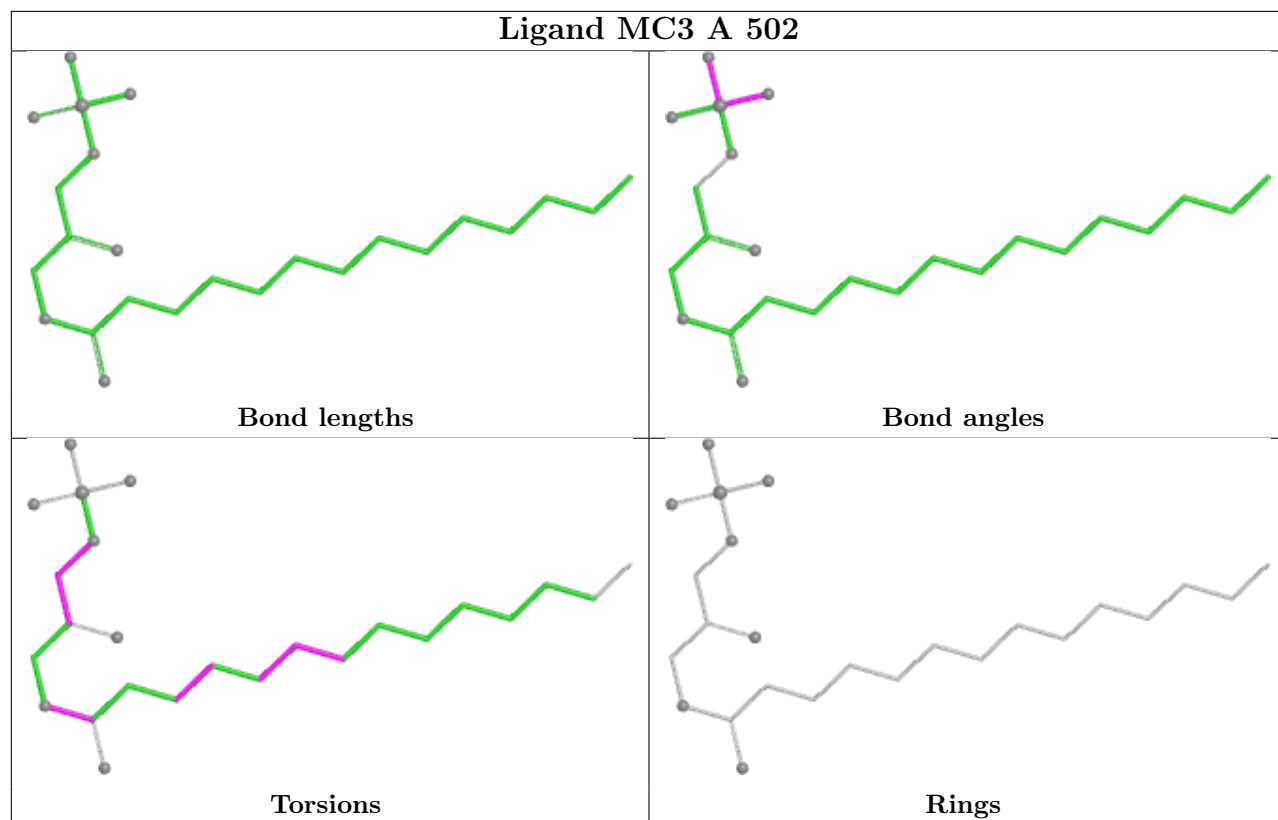
Mol	Chain	Res	Type	Atoms
2	C	513	MC3	C15-C16-C17-C18
2	D	513	MC3	C12-C13-C14-C15
2	F	513	MC3	C12-C13-C14-C15
2	C	513	MC3	C12-C13-C14-C15
2	F	513	MC3	C15-C16-C17-C18
2	A	502	MC3	C15-C16-C17-C18
2	I	513	MC3	C15-C16-C17-C18
2	J	513	MC3	C15-C16-C17-C18
2	E	513	MC3	C15-C16-C17-C18
2	G	502	MC3	C15-C16-C17-C18
2	H	513	MC3	C15-C16-C17-C18
2	K	513	MC3	C15-C16-C17-C18

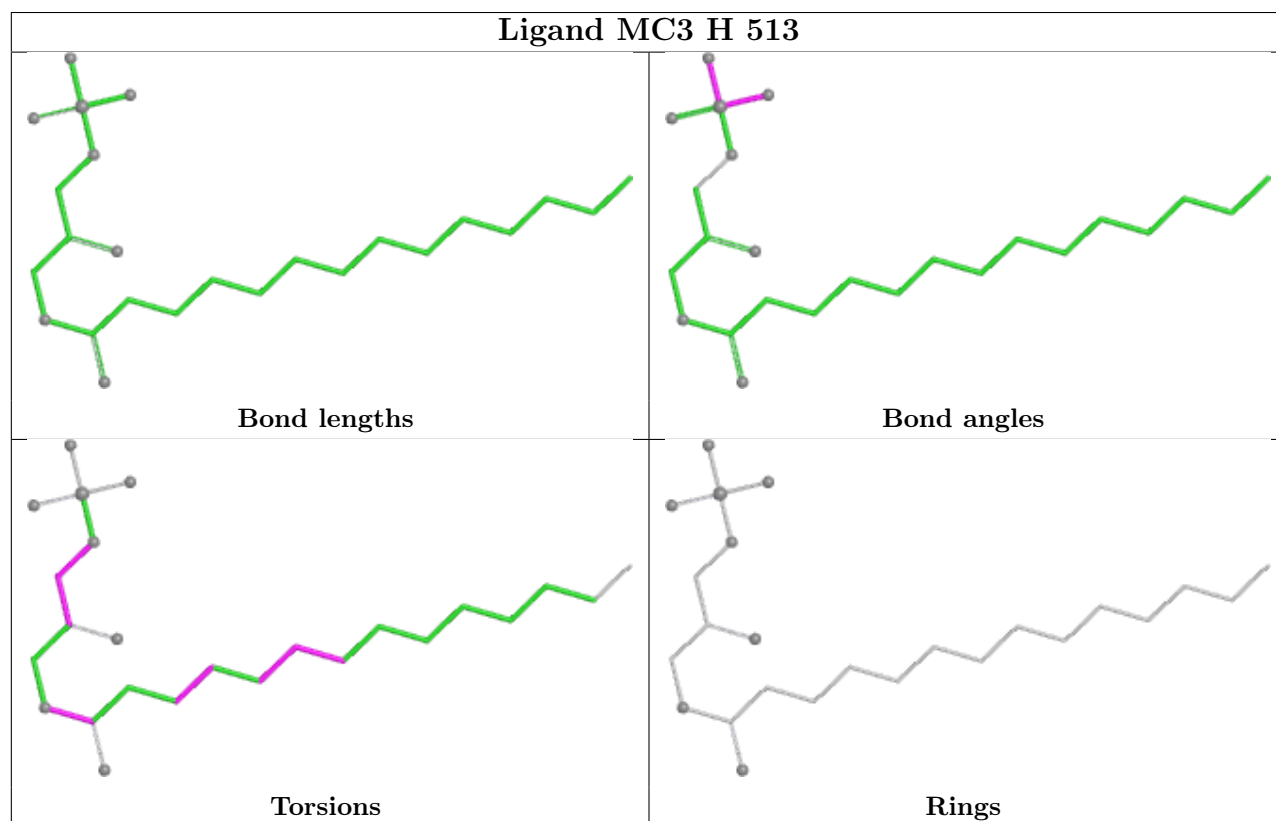
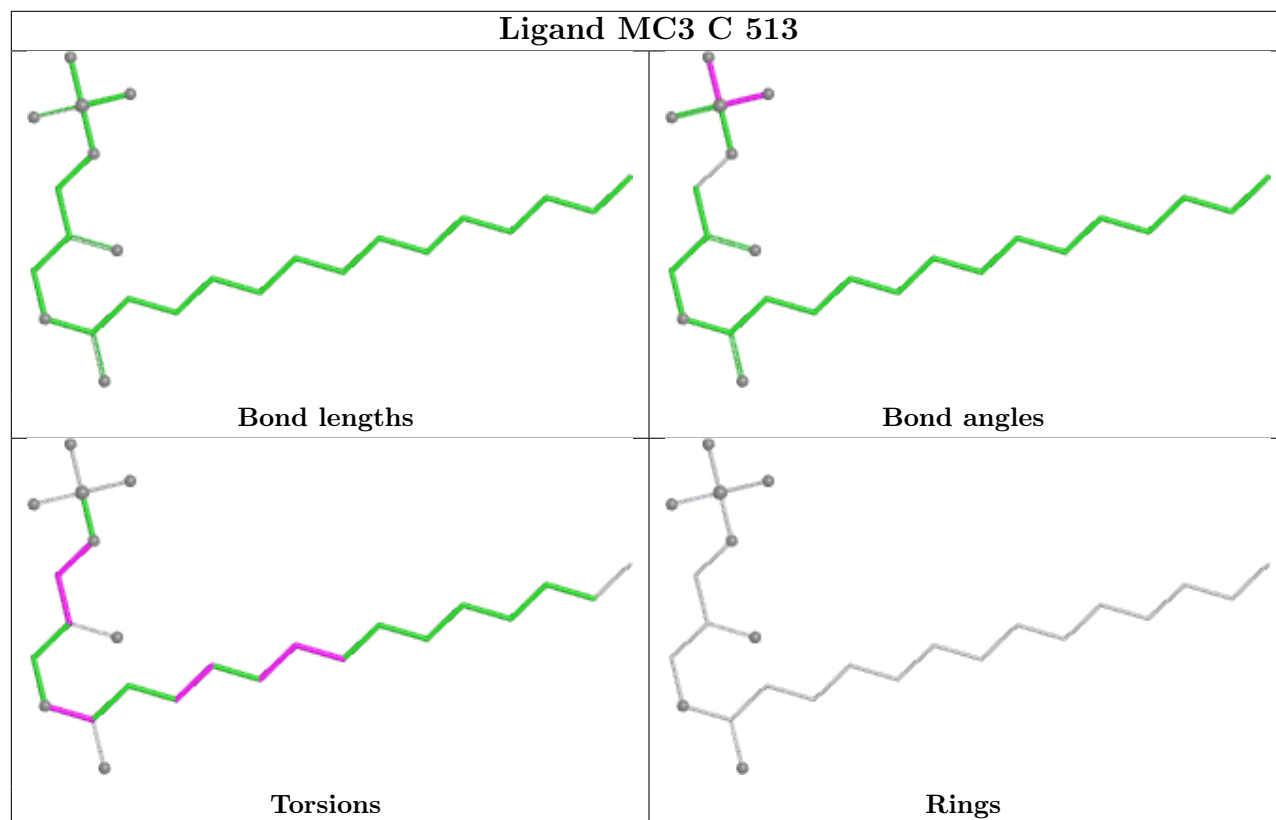
There are no ring outliers.

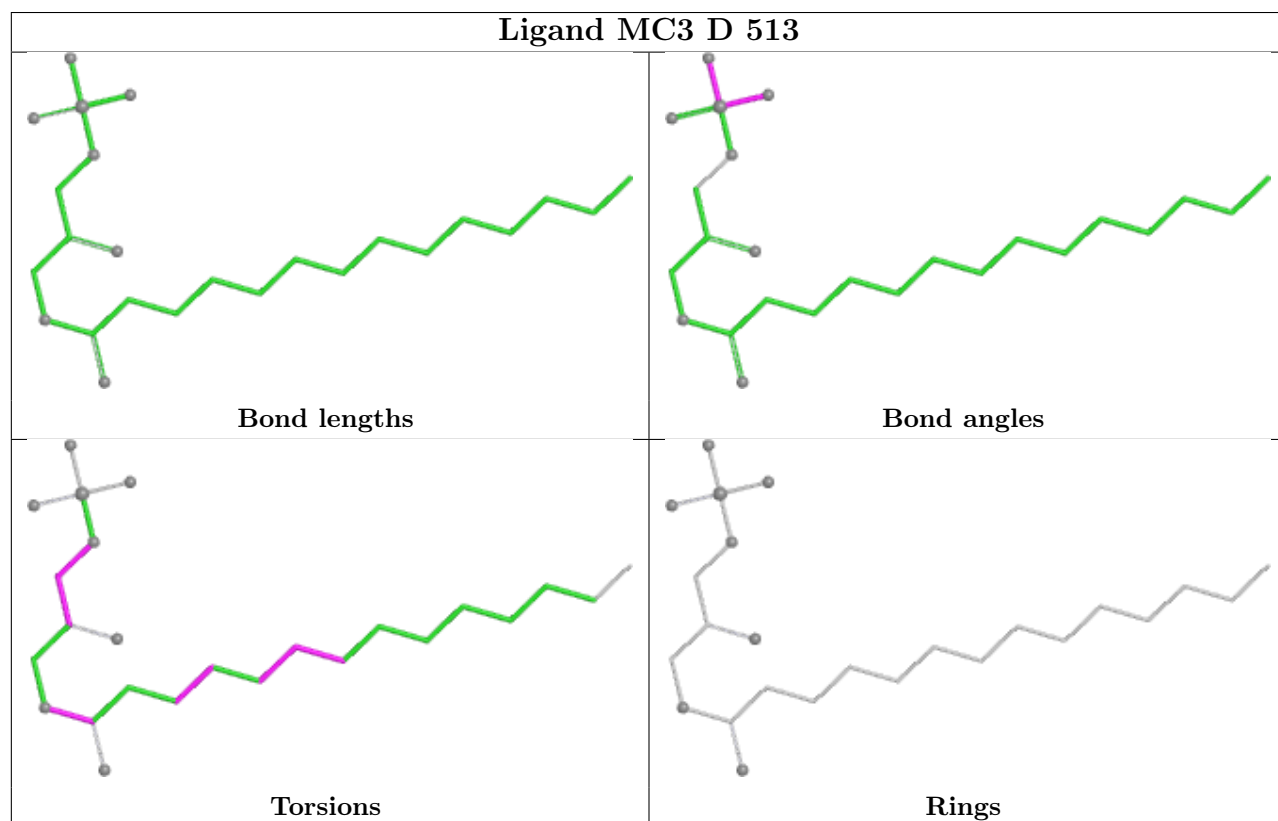
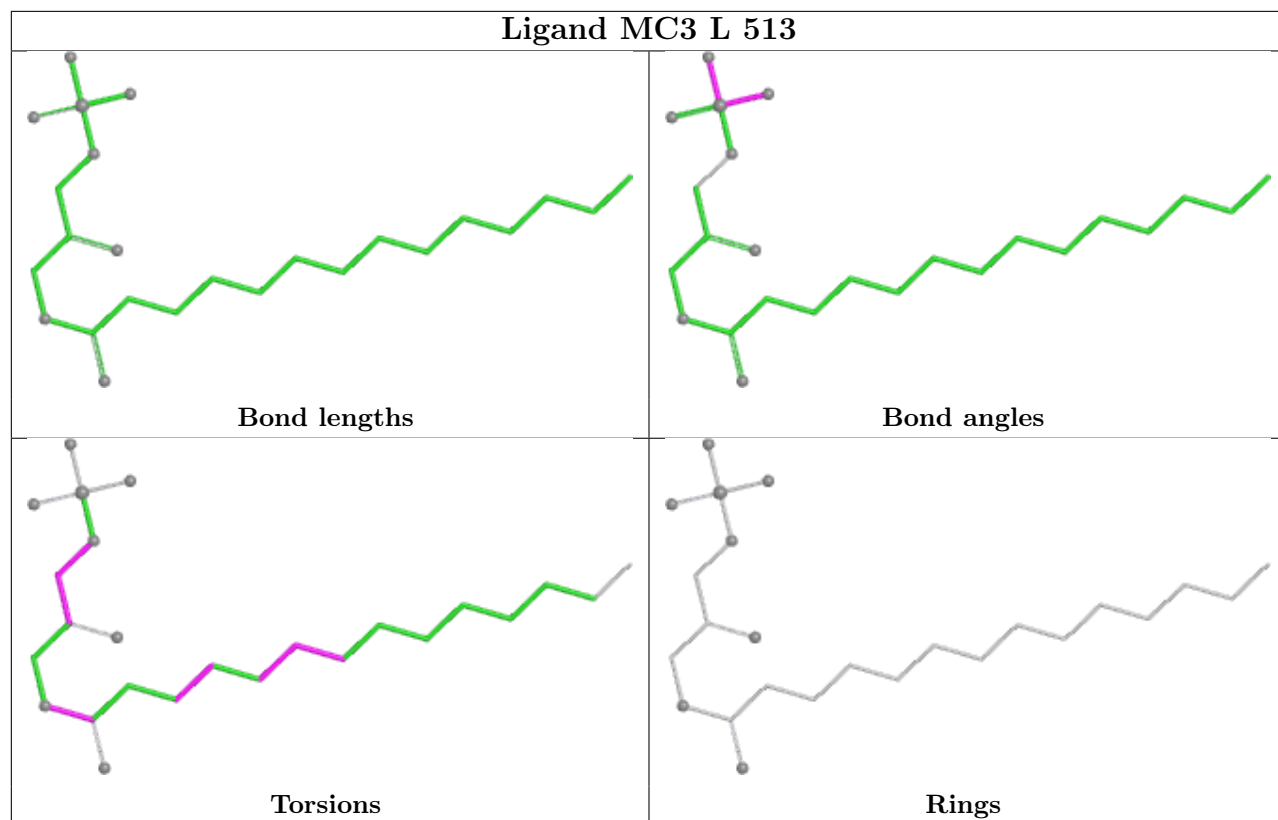
No monomer is involved in short contacts.

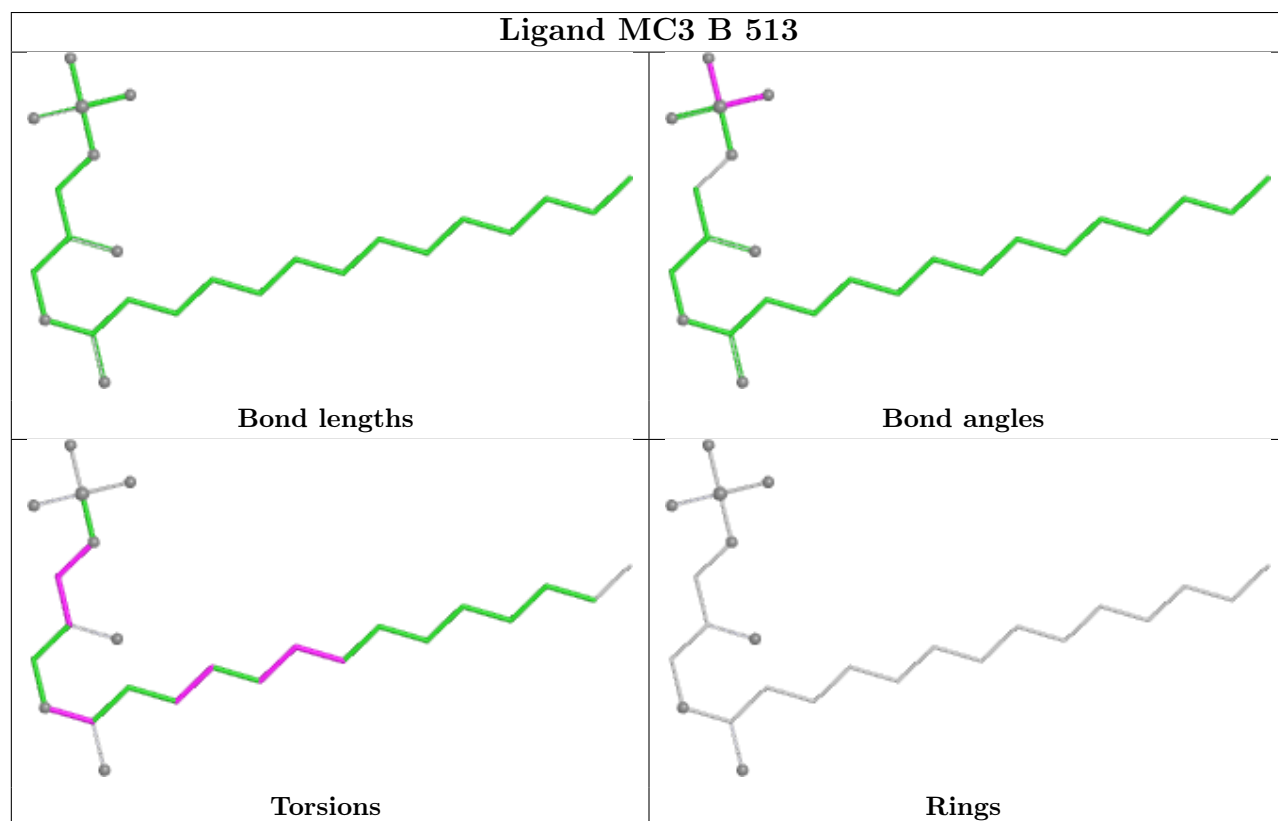
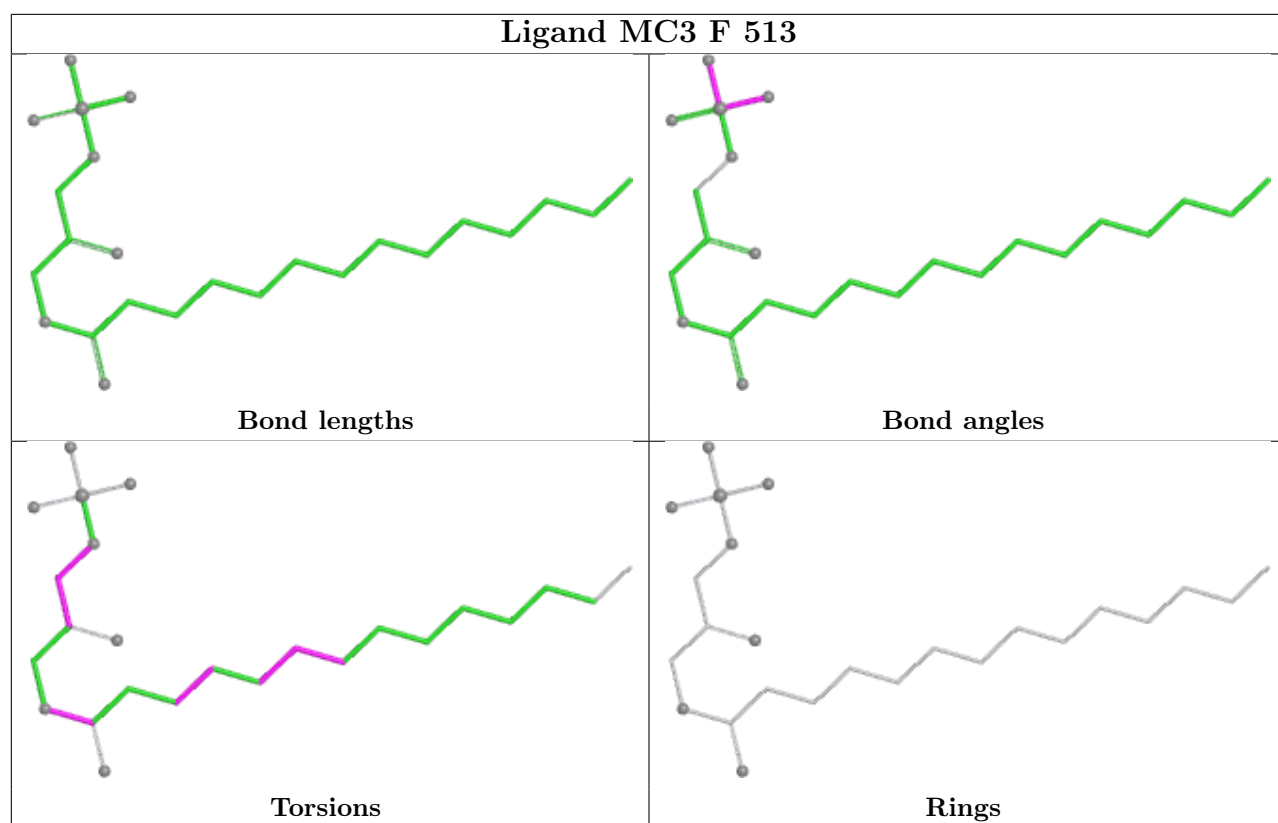
The following is a two-dimensional graphical depiction of Mogul quality analysis of bond lengths, bond angles, torsion angles, and ring geometry for all instances of the Ligand of Interest. In addition, ligands with molecular weight > 250 and outliers as shown on the validation Tables will also be included. For torsion angles, if less than 5% of the Mogul distribution of torsion angles is within 10 degrees of the torsion angle in question, then that torsion angle is considered an outlier. Any bond that is central to one or more torsion angles identified as an outlier by Mogul will be highlighted in the graph. For rings, the root-mean-square deviation (RMSD) between the ring in question and similar rings identified by Mogul is calculated over all ring torsion angles. If the average RMSD is greater than 60 degrees and the minimal RMSD between the ring in question and any Mogul-identified rings is also greater than 60 degrees, then that ring is considered an outlier. The outliers are highlighted in purple. The color gray indicates Mogul did not find sufficient equivalents in the CSD to analyse the geometry.

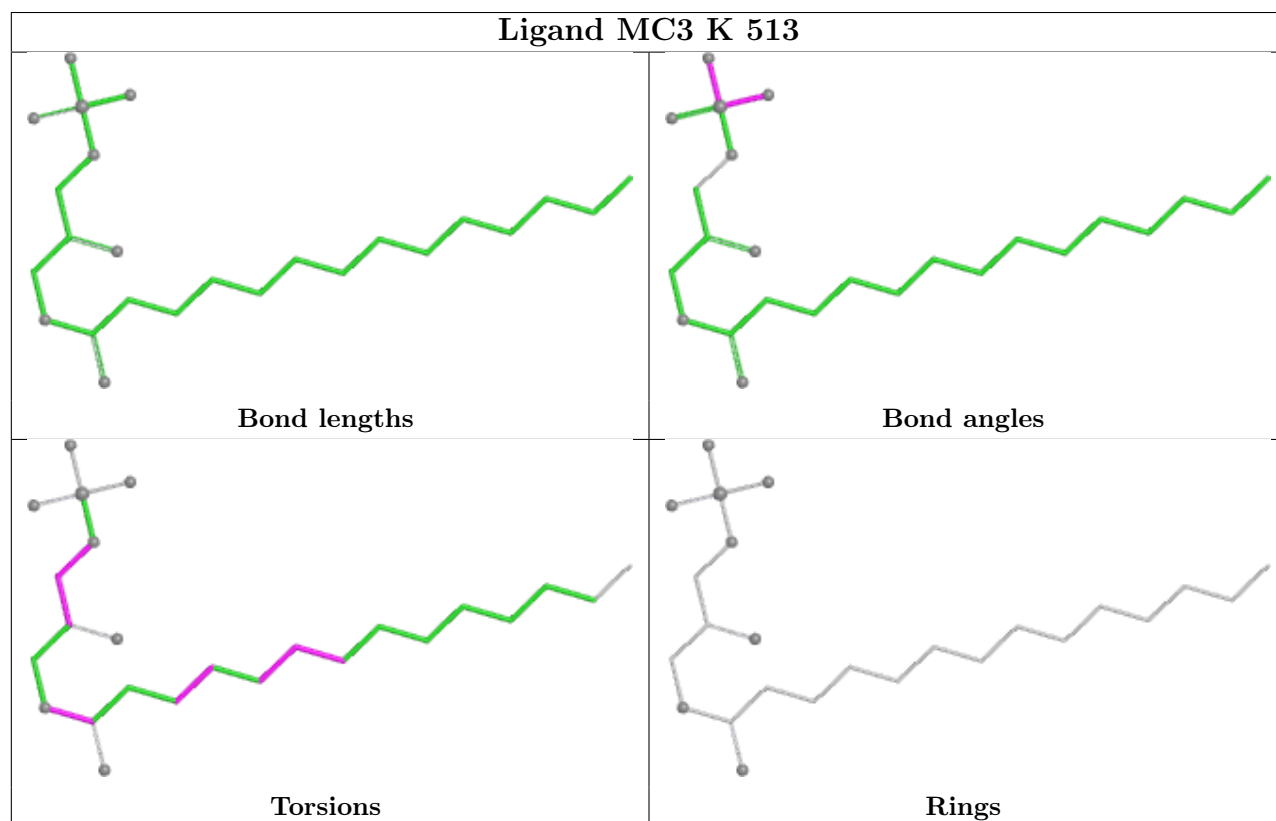
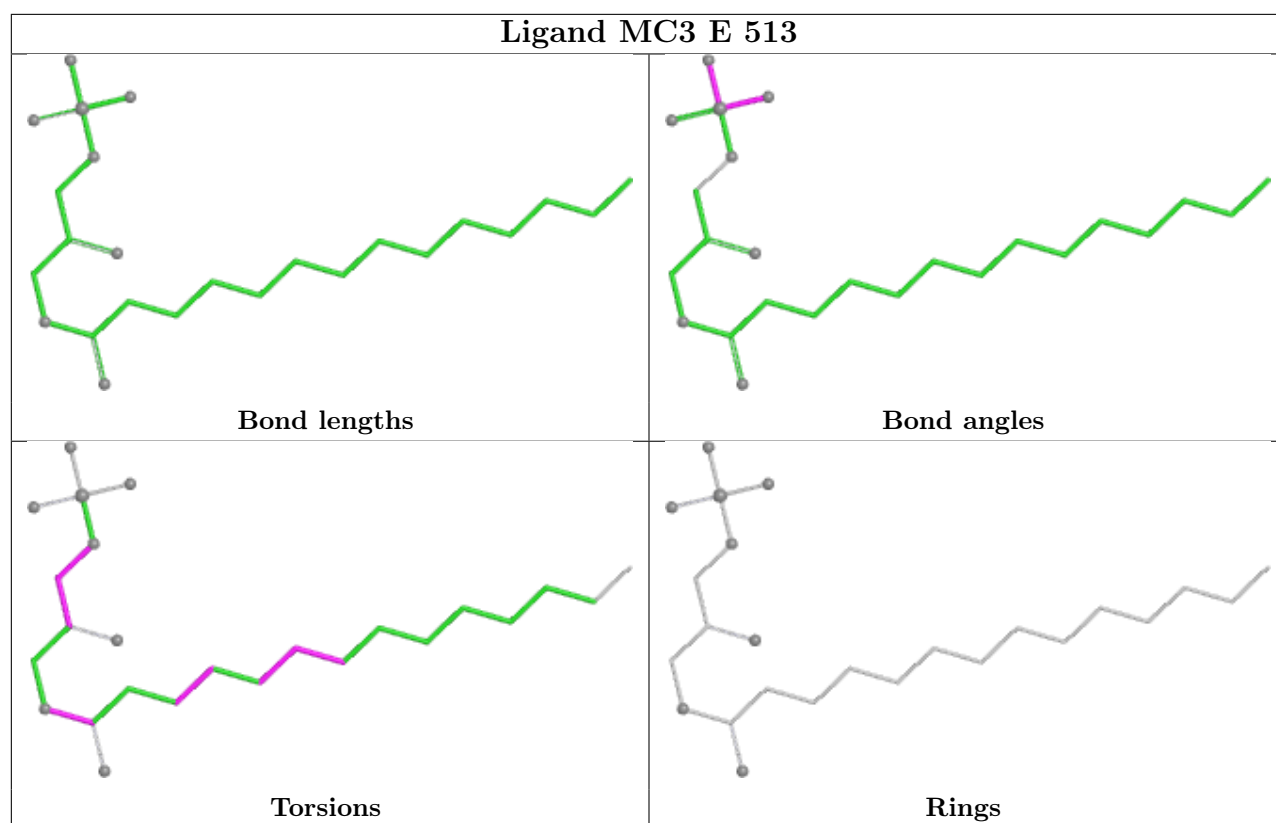












5.7 Other polymers [i](#)

There are no such residues in this entry.

5.8 Polymer linkage issues [i](#)

There are no chain breaks in this entry.

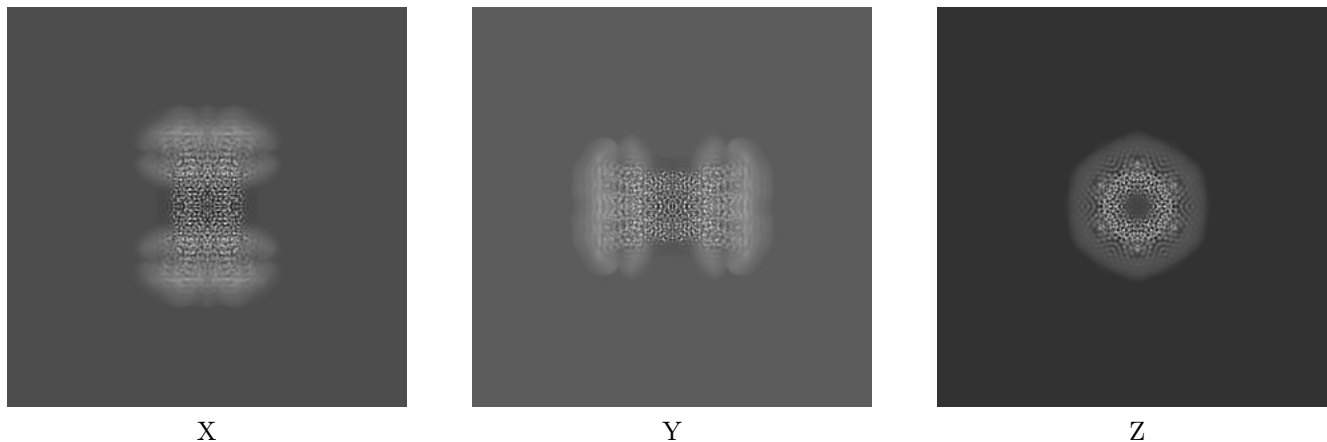
6 Map visualisation [i](#)

This section contains visualisations of the EMDB entry EMD-73957. These allow visual inspection of the internal detail of the map and identification of artifacts.

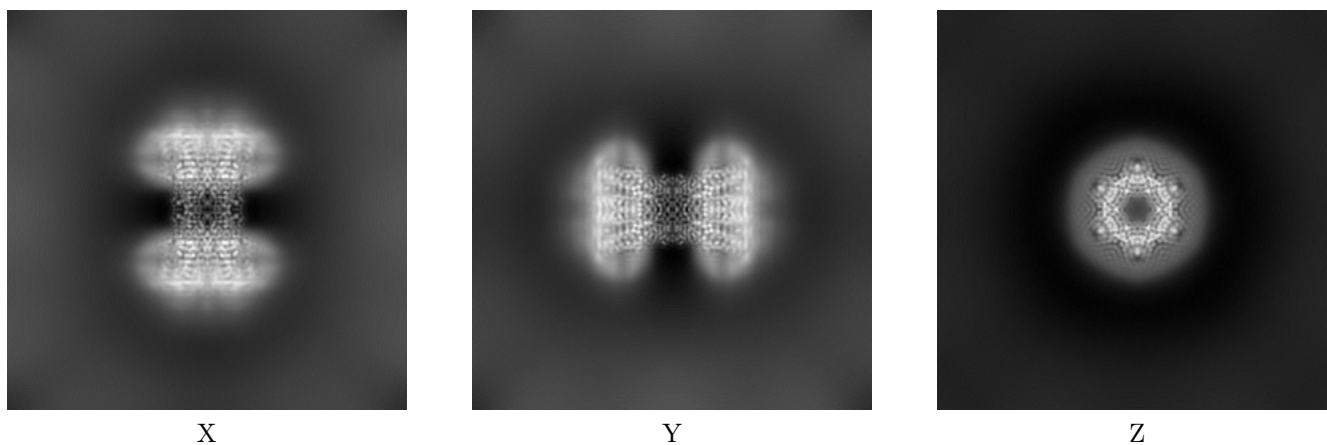
Images derived from a raw map, generated by summing the deposited half-maps, are presented below the corresponding image components of the primary map to allow further visual inspection and comparison with those of the primary map.

6.1 Orthogonal projections [i](#)

6.1.1 Primary map



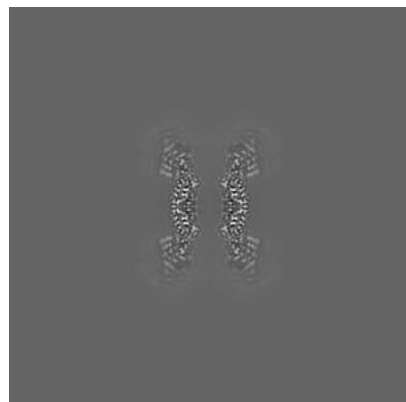
6.1.2 Raw map



The images above show the map projected in three orthogonal directions.

6.2 Central slices [i](#)

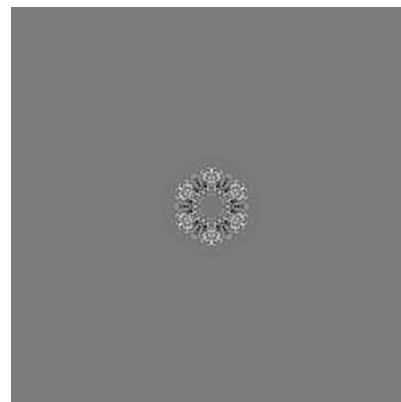
6.2.1 Primary map



X Index: 192

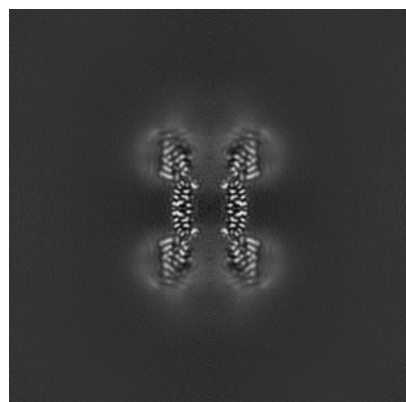


Y Index: 192

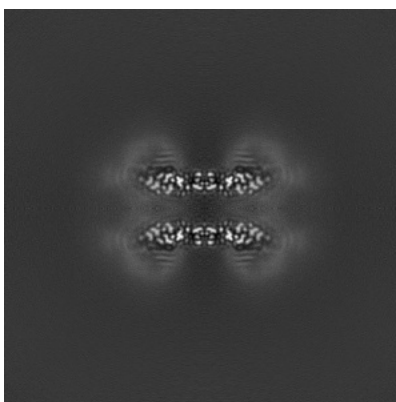


Z Index: 192

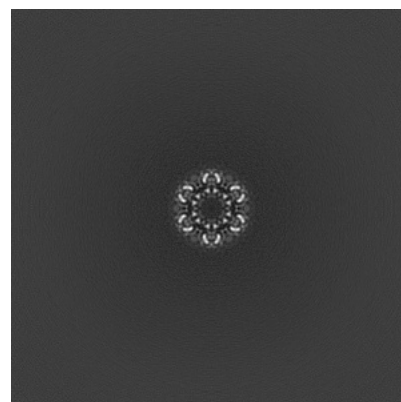
6.2.2 Raw map



X Index: 192



Y Index: 192

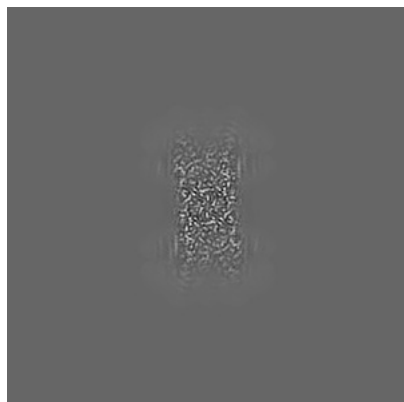


Z Index: 192

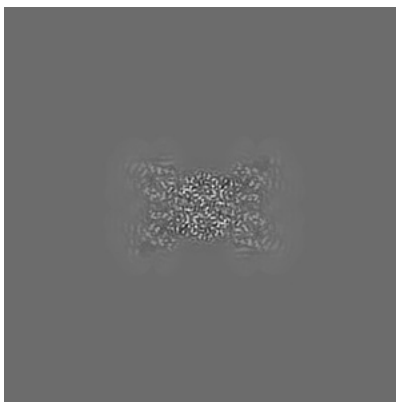
The images above show central slices of the map in three orthogonal directions.

6.3 Largest variance slices [i](#)

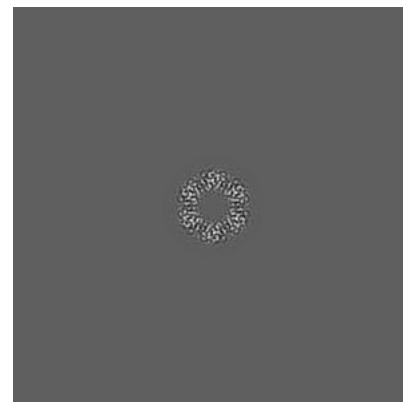
6.3.1 Primary map



X Index: 171

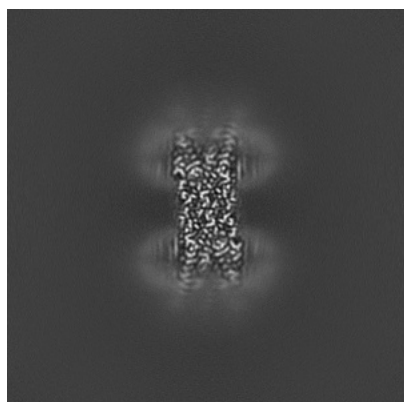


Y Index: 174

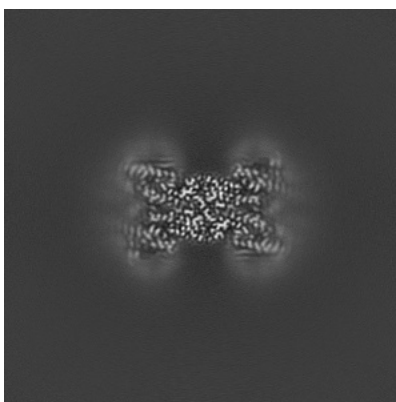


Z Index: 204

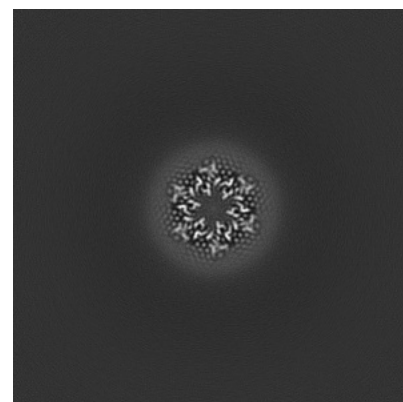
6.3.2 Raw map



X Index: 171



Y Index: 174

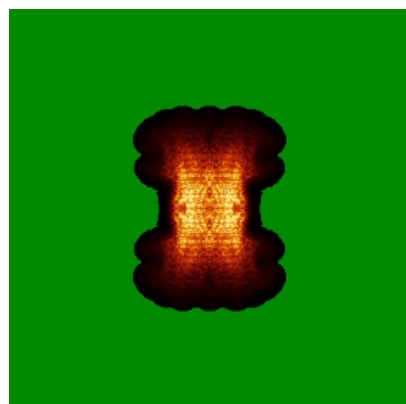


Z Index: 223

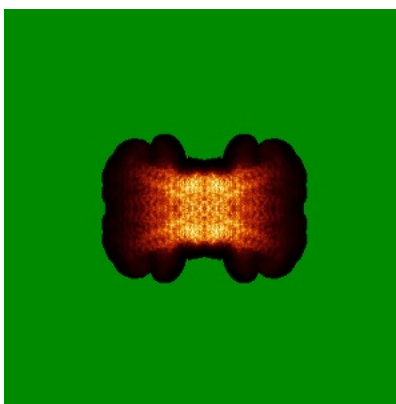
The images above show the largest variance slices of the map in three orthogonal directions.

6.4 Orthogonal standard-deviation projections (False-color) [i](#)

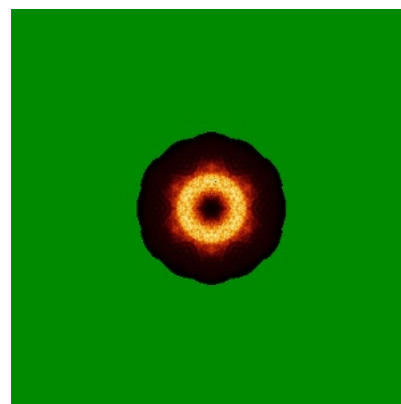
6.4.1 Primary map



X

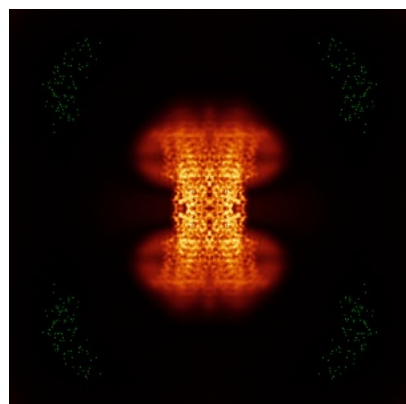


Y

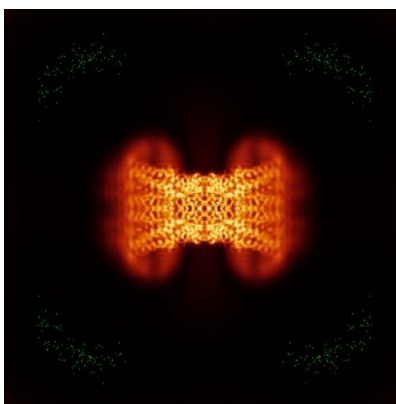


Z

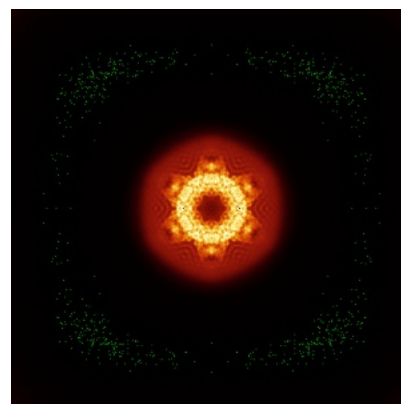
6.4.2 Raw map



X



Y

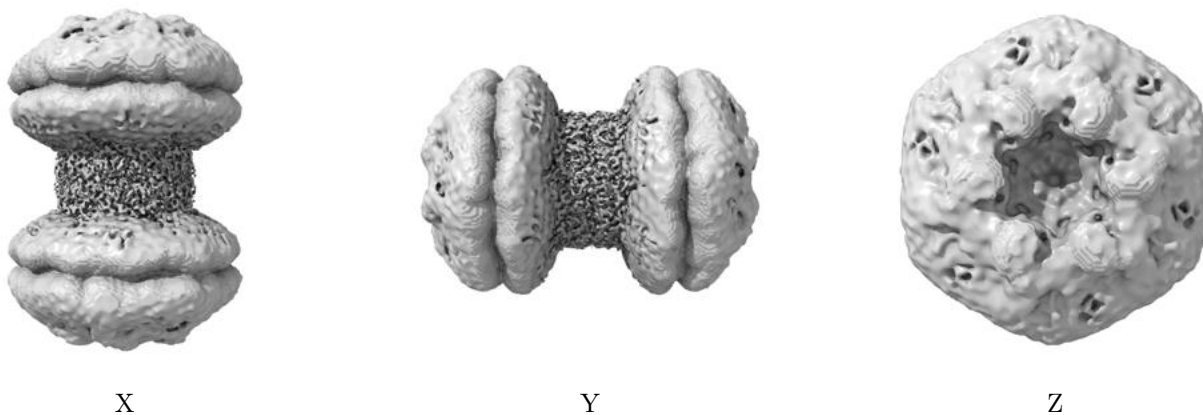


Z

The images above show the map standard deviation projections with false color in three orthogonal directions. Minimum values are shown in green, max in blue, and dark to light orange shades represent small to large values respectively.

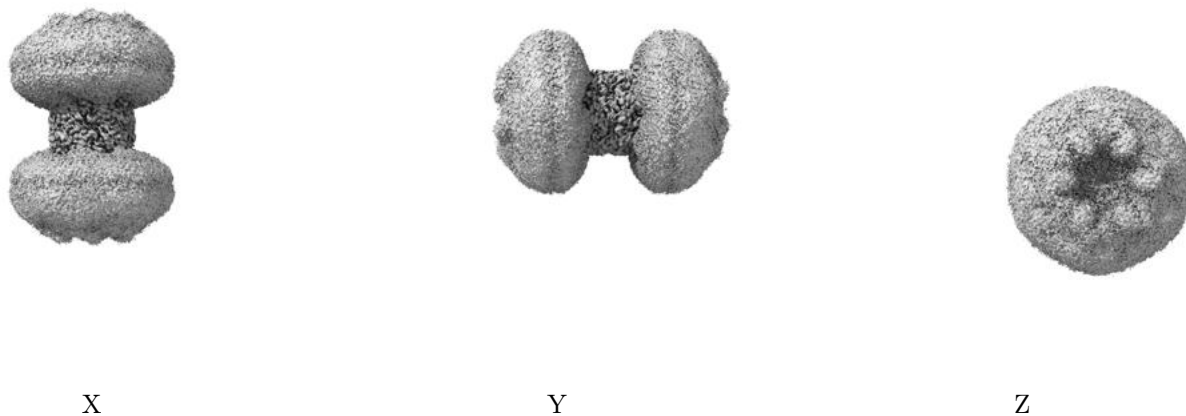
6.5 Orthogonal surface views [i](#)

6.5.1 Primary map



The images above show the 3D surface view of the map at the recommended contour level 0.04. These images, in conjunction with the slice images, may facilitate assessment of whether an appropriate contour level has been provided.

6.5.2 Raw map



These images show the 3D surface of the raw map. The raw map's contour level was selected so that its surface encloses the same volume as the primary map does at its recommended contour level.

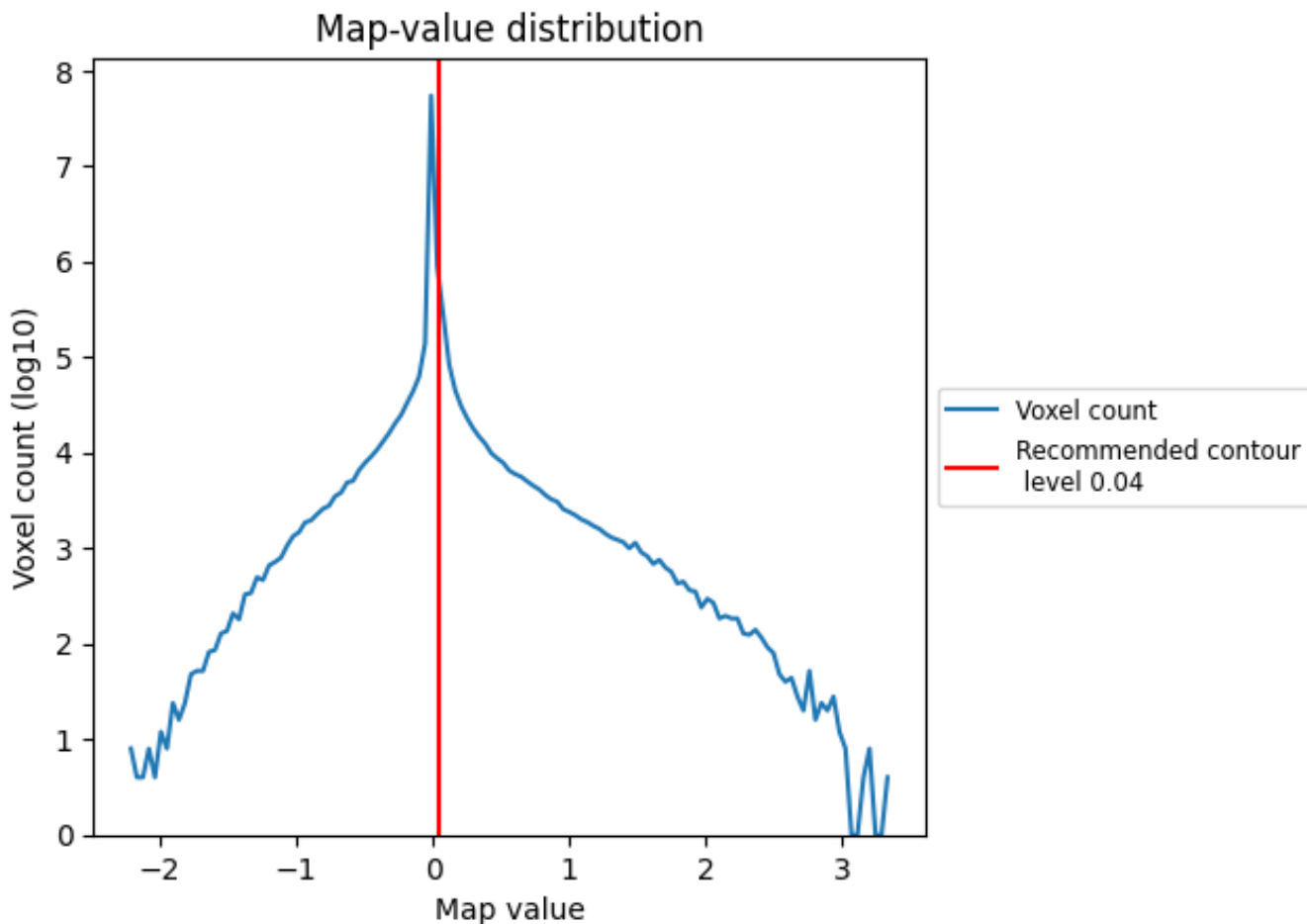
6.6 Mask visualisation [i](#)

This section was not generated. No masks/segmentation were deposited.

7 Map analysis [i](#)

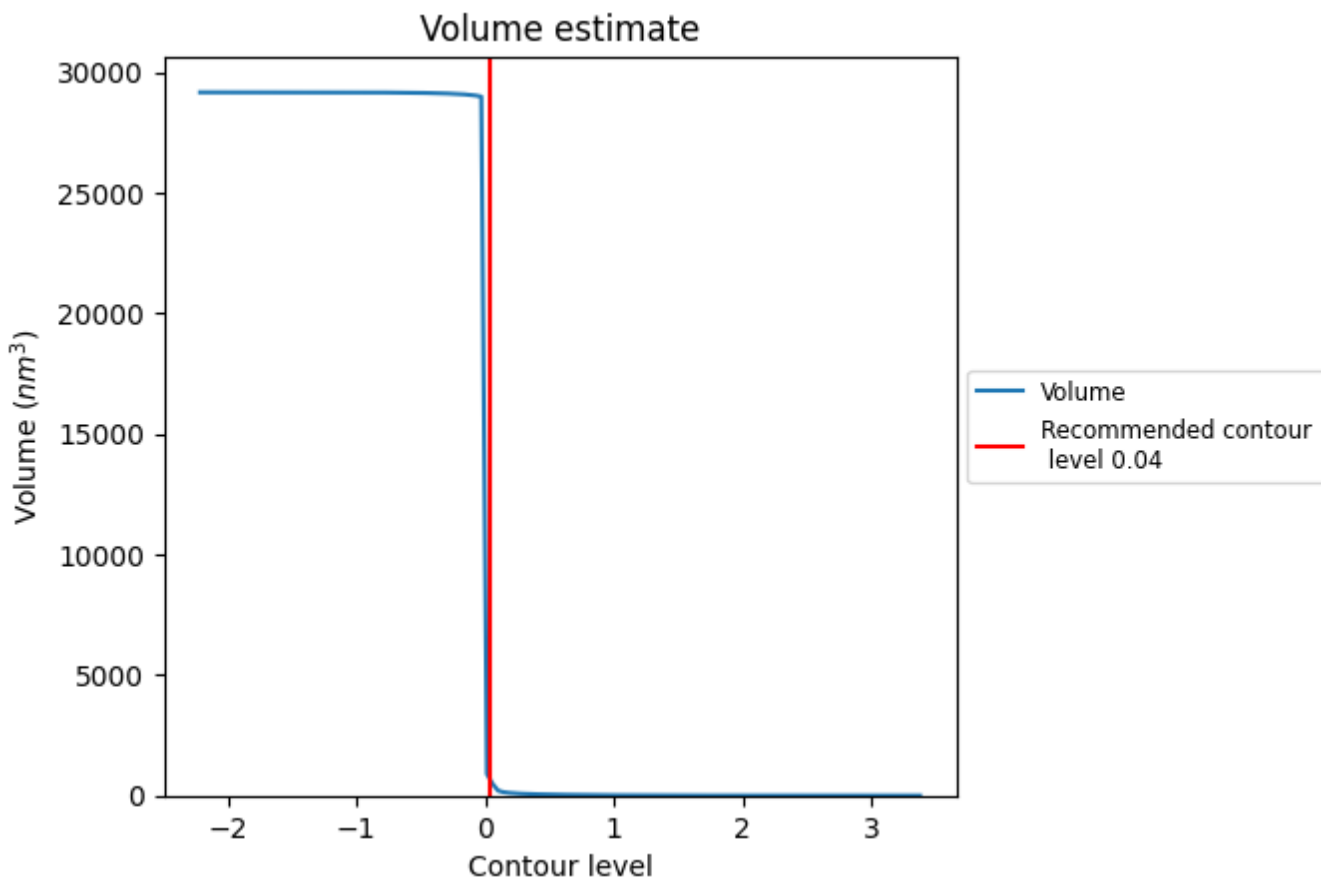
This section contains the results of statistical analysis of the map.

7.1 Map-value distribution [i](#)



The map-value distribution is plotted in 128 intervals along the x-axis. The y-axis is logarithmic. A spike in this graph at zero usually indicates that the volume has been masked.

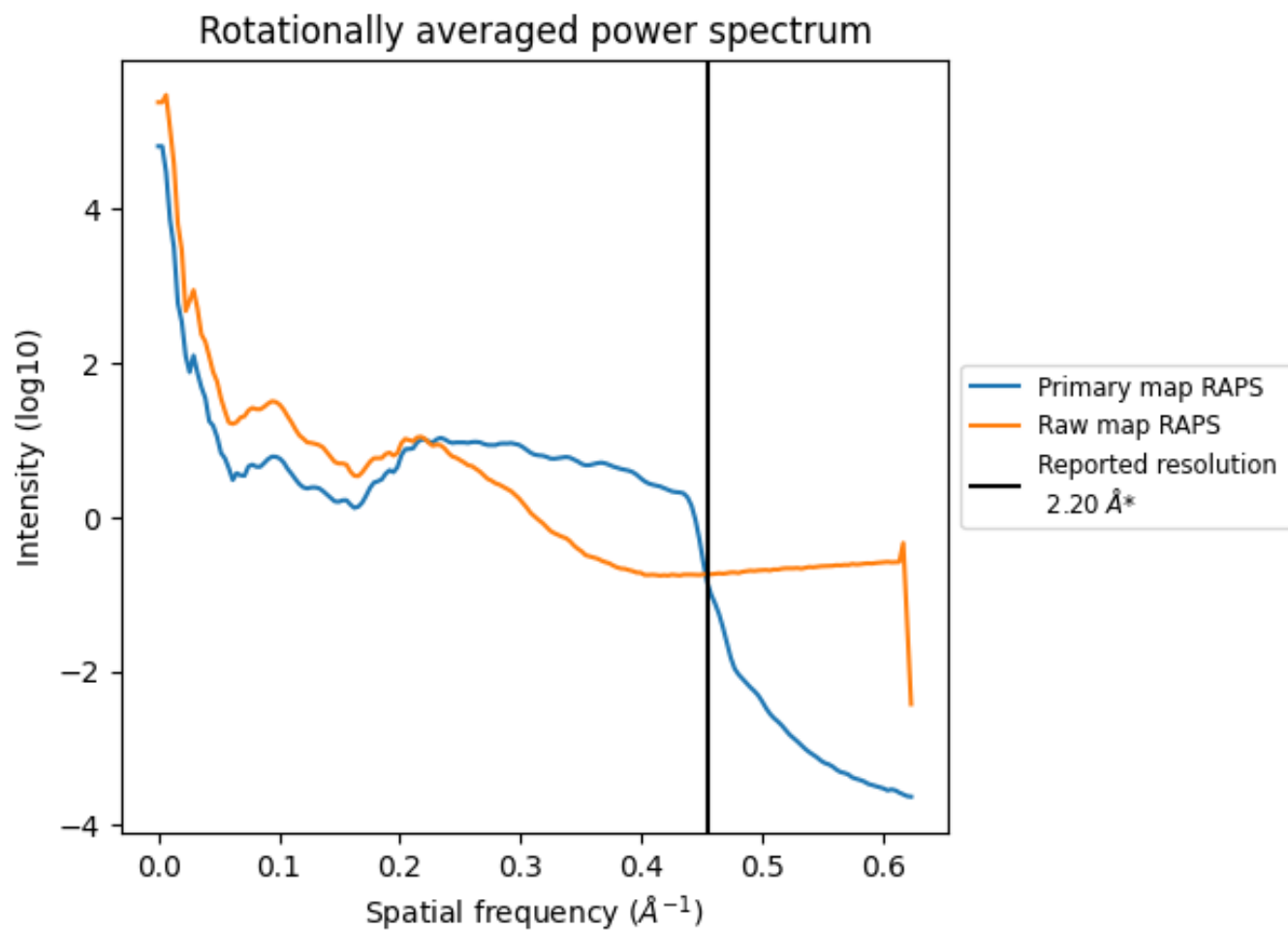
7.2 Volume estimate [i](#)



The volume at the recommended contour level is 640 nm³; this corresponds to an approximate mass of 578 kDa.

The volume estimate graph shows how the enclosed volume varies with the contour level. The recommended contour level is shown as a vertical line and the intersection between the line and the curve gives the volume of the enclosed surface at the given level.

7.3 Rotationally averaged power spectrum i

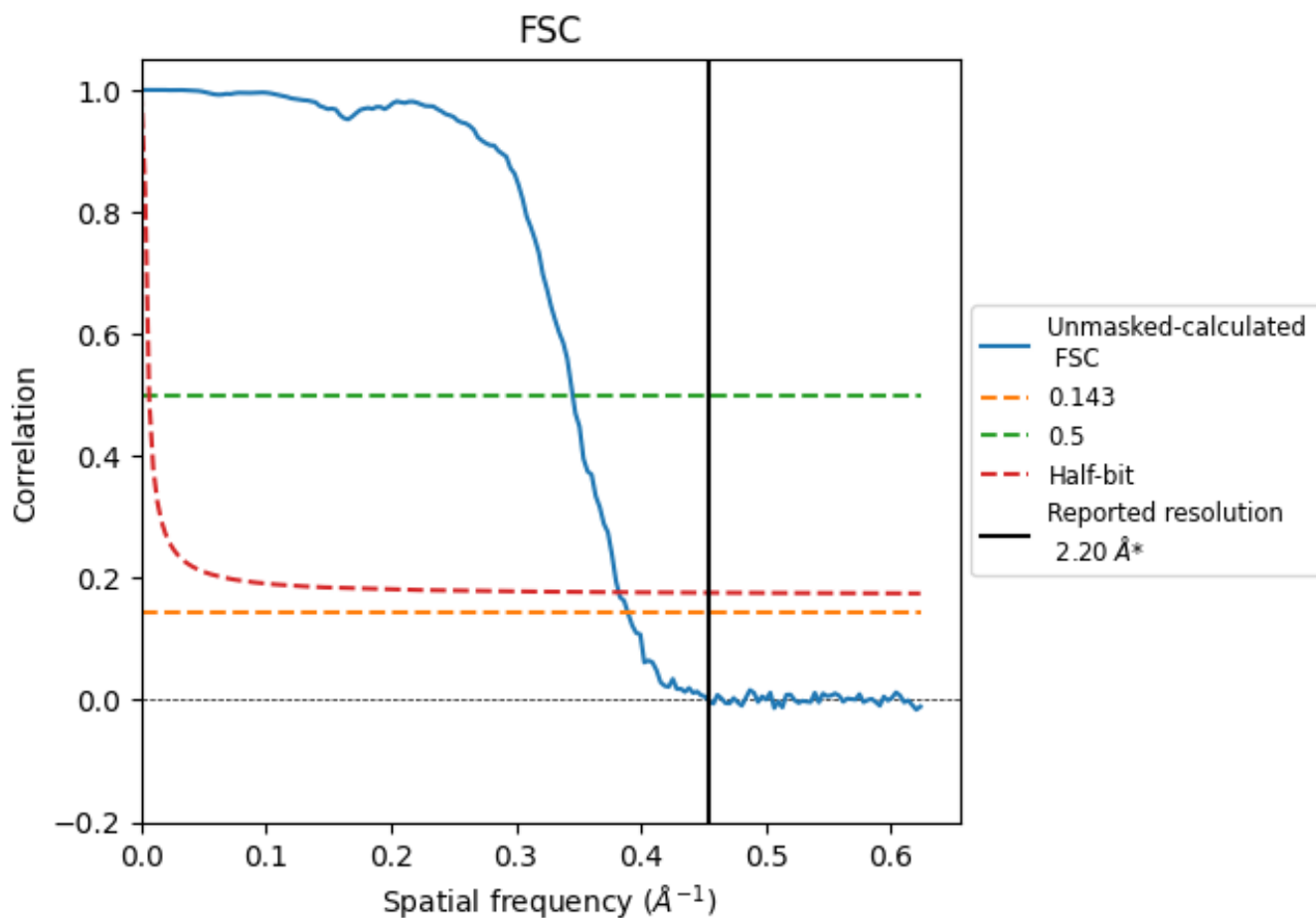


*Reported resolution corresponds to spatial frequency of 0.455 Å⁻¹

8 Fourier-Shell correlation [i](#)

Fourier-Shell Correlation (FSC) is the most commonly used method to estimate the resolution of single-particle and subtomogram-averaged maps. The shape of the curve depends on the imposed symmetry, mask and whether or not the two 3D reconstructions used were processed from a common reference. The reported resolution is shown as a black line. A curve is displayed for the half-bit criterion in addition to lines showing the 0.143 gold standard cut-off and 0.5 cut-off.

8.1 FSC [i](#)



*Reported resolution corresponds to spatial frequency of 0.455 Å⁻¹

8.2 Resolution estimates [i](#)

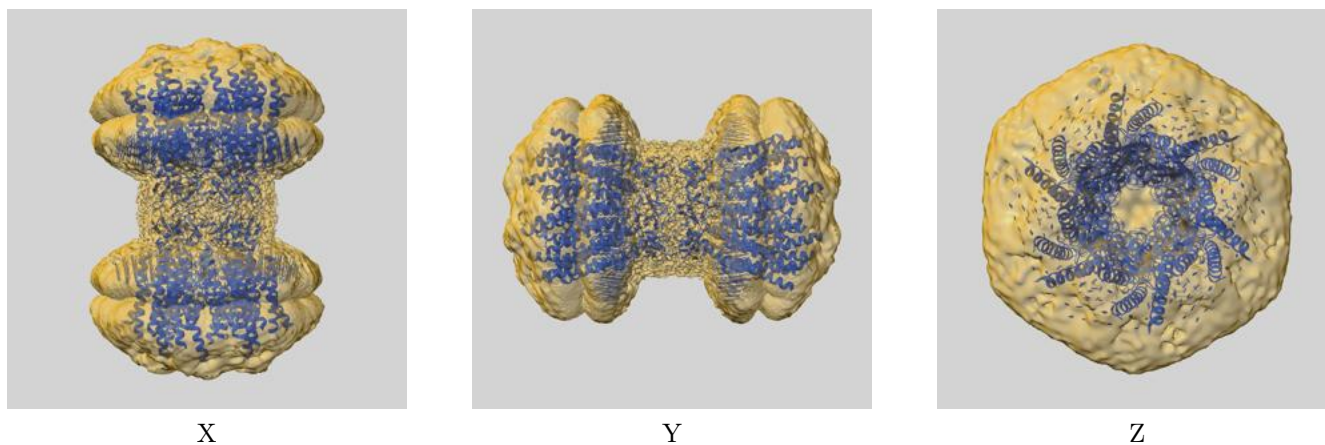
Resolution estimate (Å)	Estimation criterion (FSC cut-off)		
	0.143	0.5	Half-bit
Reported by author	2.20	-	-
Author-provided FSC curve	-	-	-
Unmasked-calculated*	2.57	2.90	2.62

*Resolution estimate based on FSC curve calculated by comparison of deposited half-maps. The value from deposited half-maps intersecting FSC 0.143 CUT-OFF 2.57 differs from the reported value 2.2 by more than 10 %

9 Map-model fit [i](#)

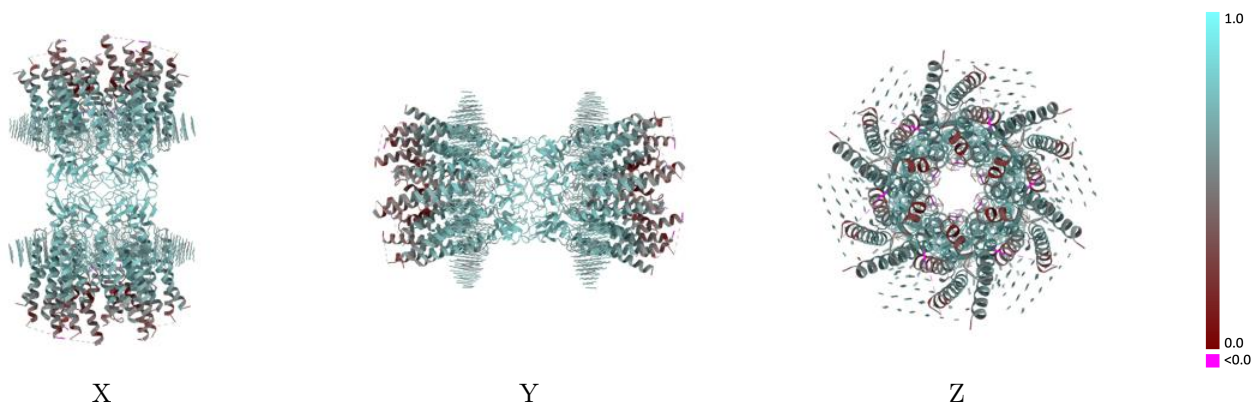
This section contains information regarding the fit between EMDB map EMD-73957 and PDB model 9Z9S. Per-residue inclusion information can be found in section 3 on page 20.

9.1 Map-model overlay [i](#)



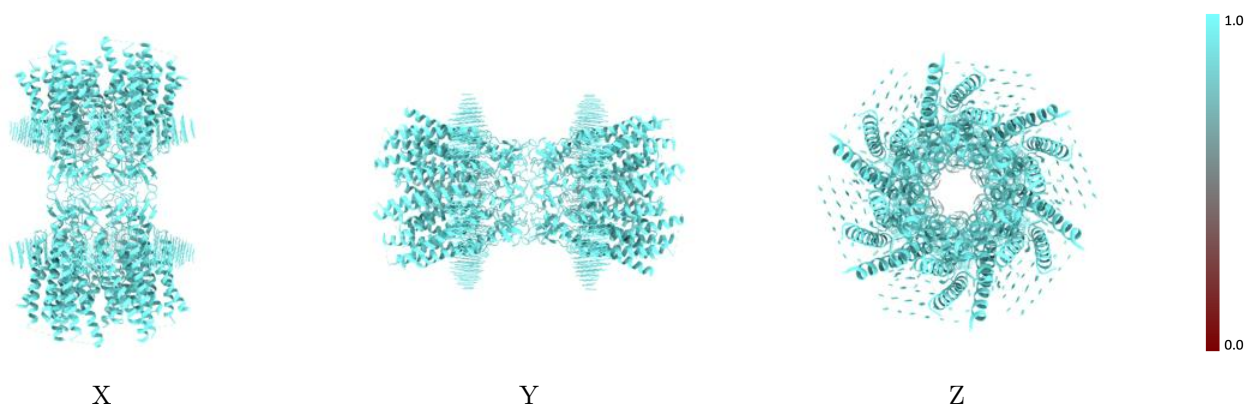
The images above show the 3D surface view of the map at the recommended contour level 0.04 at 50% transparency in yellow overlaid with a ribbon representation of the model coloured in blue. These images allow for the visual assessment of the quality of fit between the atomic model and the map.

9.2 Q-score mapped to coordinate model [i](#)



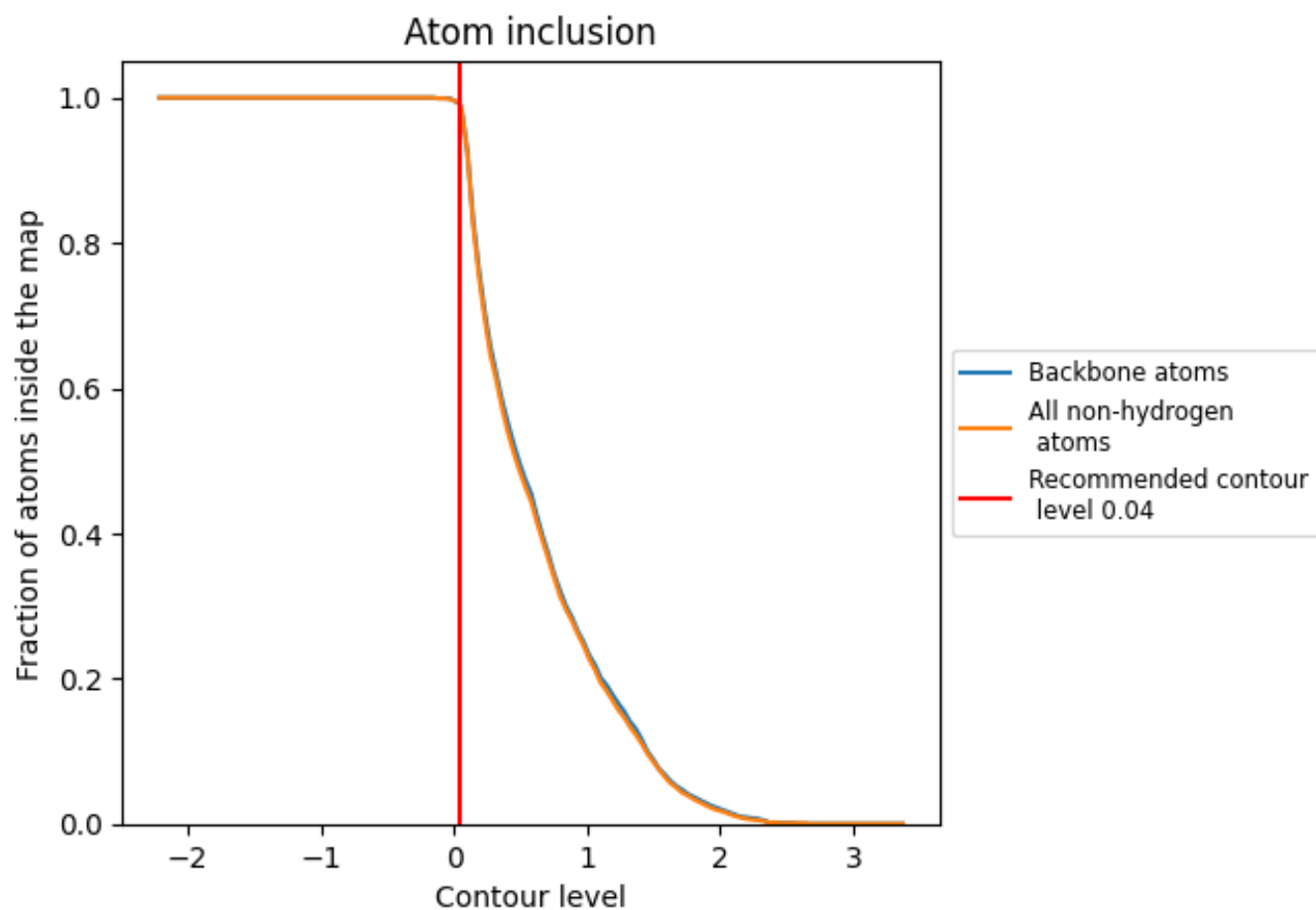
The images above show the model with each residue coloured according to its Q-score. This shows their resolvability in the map with higher Q-score values reflecting better resolvability. Please note: Q-score is calculating the resolvability of atoms, and thus high values are only expected at resolutions at which atoms can be resolved. Low Q-score values may therefore be expected for many entries.

9.3 Atom inclusion mapped to coordinate model [i](#)



The images above show the model with each residue coloured according to its atom inclusion. This shows to what extent they are inside the map at the recommended contour level (0.04).



















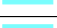



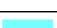

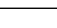
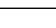
9.4 Atom inclusion [i](#)



At the recommended contour level, 99% of all backbone atoms, 99% of all non-hydrogen atoms, are inside the map.

9.5 Map-model fit summary

The table lists the average atom inclusion at the recommended contour level (0.04) and Q-score for the entire model and for each chain.

Chain	Atom inclusion	Q-score
All	 0.9930	 0.6030
A	 0.9940	 0.6030
B	 0.9930	 0.6040
C	 0.9940	 0.6020
D	 0.9940	 0.6030
E	 0.9930	 0.6030
F	 0.9940	 0.6030
G	 0.9940	 0.6050
H	 0.9930	 0.6050
I	 0.9940	 0.6040
J	 0.9940	 0.6040
K	 0.9930	 0.6030
L	 0.9940	 0.6030

