



Full wwPDB X-ray Structure Validation Report ⓘ

Nov 10, 2025 – 06:40 PM JST

PDB ID : 9V69 / pdb_00009v69
Title : X-ray crystal structure of the two-electron reduced form of wild type b5R
Authors : Hirano, Y.; Kurihara, K.; Kusaka, K.; Ostermann, A.; Hikita, M.; Kimura, S.; Miki, K.; Tamada, T.
Deposited on : 2025-05-27
Resolution : 0.96 Å(reported)

This is a Full wwPDB X-ray Structure Validation Report for a publicly released PDB entry.

We welcome your comments at validation@mail.wwpdb.org

A user guide is available at

<https://www.wwpdb.org/validation/2017/XrayValidationReportHelp>

with specific help available everywhere you see the ⓘ symbol.

The types of validation reports are described at

<http://www.wwpdb.org/validation/2017/FAQs#types>.

The following versions of software and data (see [references ⓘ](#)) were used in the production of this report:

MolProbity : 4-5-2 with Phenix2.0
Mogul : 1.8.5 (274361), CSD as541be (2020)
Xtriage (Phenix) : 2.0
EDS : 3.0
buster-report : 1.1.7 (2018)
Percentile statistics : 20231227.v01 (using entries in the PDB archive December 27th 2023)
CCP4 : 9.0.010 (Gargrove)
Density-Fitness : 1.0.12
Ideal geometry (proteins) : Engh & Huber (2001)
Ideal geometry (DNA, RNA) : Parkinson et al. (1996)
Validation Pipeline (wwPDB-VP) : 2.46

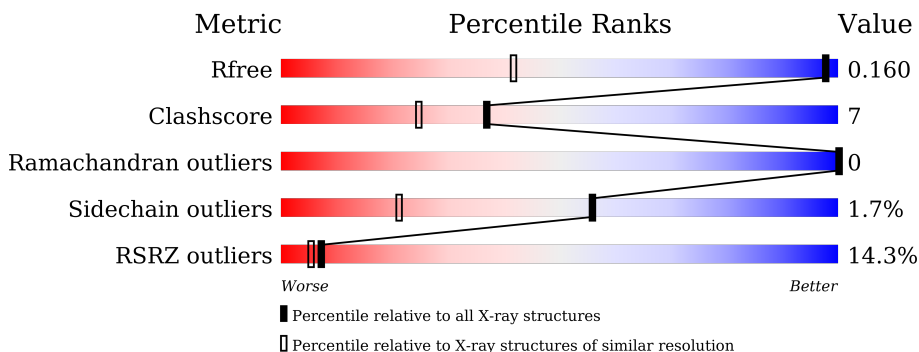
1 Overall quality at a glance

The following experimental techniques were used to determine the structure:

X-RAY DIFFRACTION

The reported resolution of this entry is 0.96 Å.

Percentile scores (ranging between 0-100) for global validation metrics of the entry are shown in the following graphic. The table shows the number of entries on which the scores are based.



Metric	Whole archive (#Entries)	Similar resolution (#Entries, resolution range(Å))
R_{free}	164625	1192 (1.02-0.90)
Clashscore	180529	1053 (1.00-0.92)
Ramachandran outliers	177936	1273 (1.02-0.90)
Sidechain outliers	177891	1274 (1.02-0.90)
RSRZ outliers	164620	1191 (1.02-0.90)

The table below summarises the geometric issues observed across the polymeric chains and their fit to the electron density. The red, orange, yellow and green segments of the lower bar indicate the fraction of residues that contain outliers for ≥ 3 , 2, 1 and 0 types of geometric quality criteria respectively. A grey segment represents the fraction of residues that are not modelled. The numeric value for each fraction is indicated below the corresponding segment, with a dot representing fractions $\leq 5\%$. The upper red bar (where present) indicates the fraction of residues that have poor fit to the electron density. The numeric value is given above the bar.

Mol	Chain	Length	Quality of chain
1	A	272	<div> <div>14%</div> <div>75%</div> <div>23%</div> </div>

In the tables below, the ZeroOcc column contains the number of atoms modelled with zero occupancy, the AltConf column contains the number of residues with at least one atom in alternate conformation and the Trace column contains the number of residues modelled with at most 2 atoms.

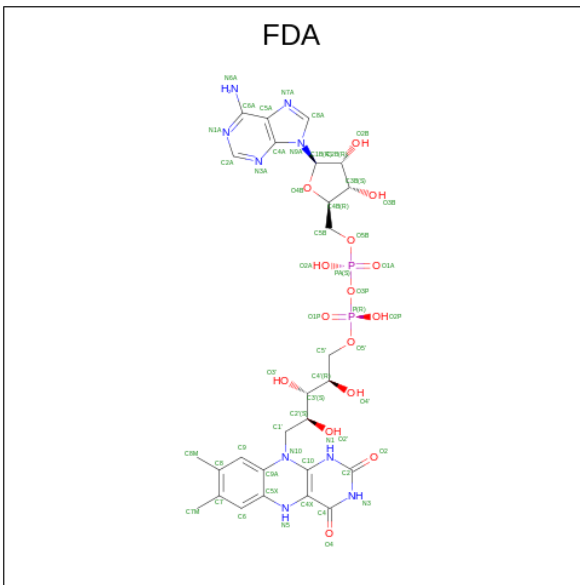
- Molecule 1 is a protein called NADH-cytochrome b5 reductase 3.

Mol	Chain	Residues	Atoms						ZeroOcc	AltConf	Trace
1	A	272	Total	C	H	N	O	S	0	61	0
			3776	1610	1250	441	461	14			

There is a discrepancy between the modelled and reference sequences:

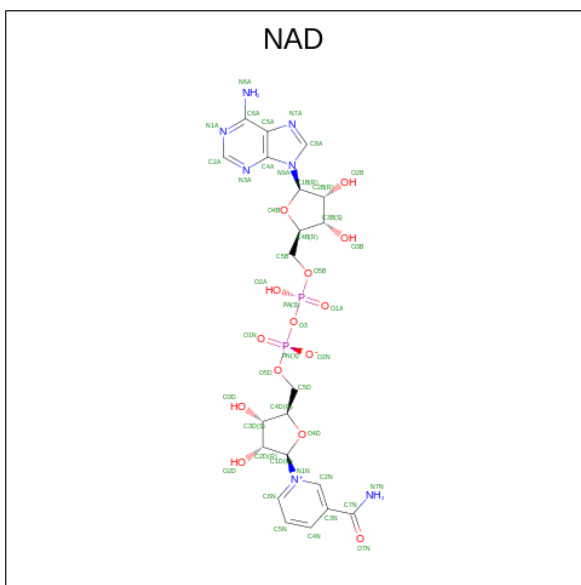
Chain	Residue	Modelled	Actual	Comment	Reference
A	39	GLN	GLU	conflict	UNP P83686

- Molecule 2 is DIHYDROFLAVINE-ADENINE DINUCLEOTIDE (CCD ID: FDA) (formula: $\text{C}_{27}\text{H}_{35}\text{N}_9\text{O}_{15}\text{P}_2$) (labeled as "Ligand of Interest" by depositor).



Mol	Chain	Residues	Atoms						ZeroOcc	AltConf
2	A	1	Total	C	H	N	O	P	0	1
			88	37	17	14	18	2		

- Molecule 3 is NICOTINAMIDE-ADENINE-DINUCLEOTIDE (CCD ID: NAD) (formula: $C_{21}H_{27}N_7O_{14}P_2$) (labeled as "Ligand of Interest" by depositor).



Mol	Chain	Residues	Atoms						ZeroOcc	AltConf
3	A	1	Total	C	H	N	O	P	0	0
			60	21	16	7	14	2		

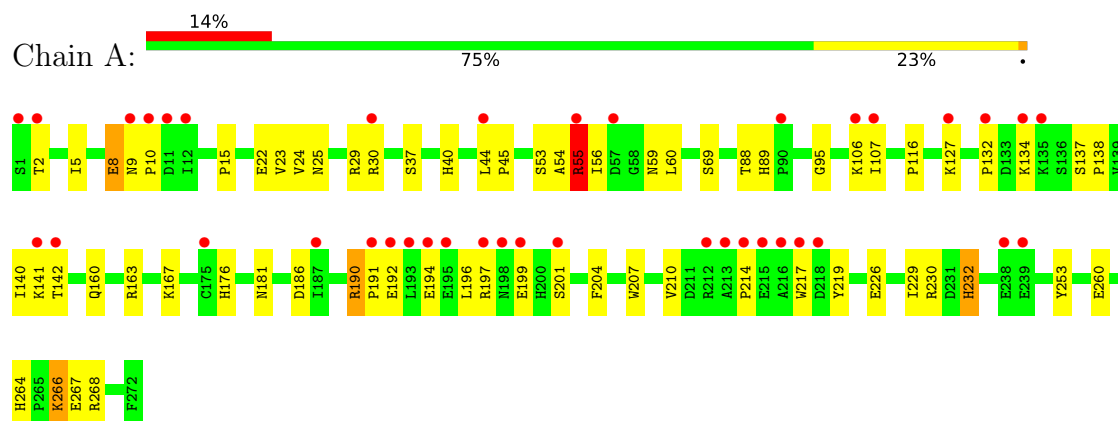
- Molecule 4 is water.

Mol	Chain	Residues	Atoms	ZeroOcc	AltConf
4	A	450	Total O 490 490	0	41

3 Residue-property plots

These plots are drawn for all protein, RNA, DNA and oligosaccharide chains in the entry. The first graphic for a chain summarises the proportions of the various outlier classes displayed in the second graphic. The second graphic shows the sequence view annotated by issues in geometry and electron density. Residues are color-coded according to the number of geometric quality criteria for which they contain at least one outlier: green = 0, yellow = 1, orange = 2 and red = 3 or more. A red dot above a residue indicates a poor fit to the electron density ($RSRZ > 2$). Stretches of 2 or more consecutive residues without any outlier are shown as a green connector. Residues present in the sample, but not in the model, are shown in grey.

- Molecule 1: NADH-cytochrome b5 reductase 3



4 Data and refinement statistics

Property	Value	Source
Space group	P 21 21 21	Depositor
Cell constants a, b, c, α , β , γ	48.02Å 79.25Å 86.83Å 90.00° 90.00° 90.00°	Depositor
Resolution (Å)	50.00 – 0.96 50.00 – 0.96	Depositor EDS
% Data completeness (in resolution range)	93.4 (50.00-0.96) 95.0 (50.00-0.96)	Depositor EDS
R_{merge}	0.04	Depositor
R_{sym}	(Not available)	Depositor
$\langle I/\sigma(I) \rangle$ ¹	1.77 (at 0.96Å)	Xtriage
Refinement program	SHELXL	Depositor
R, R_{free}	0.127 , 0.148 0.144 , 0.160	Depositor DCC
R_{free} test set	9693 reflections (2.91%)	wwPDB-VP
Wilson B-factor (Å ²)	9.9	Xtriage
Anisotropy	0.127	Xtriage
Bulk solvent k_{sol} (e/Å ³), B_{sol} (Å ²)	0.45 , 77.1	EDS
L-test for twinning ²	$\langle L \rangle = 0.49$, $\langle L^2 \rangle = 0.32$	Xtriage
Estimated twinning fraction	No twinning to report.	Xtriage
F_o, F_c correlation	0.95	EDS
Total number of atoms	4414	wwPDB-VP
Average B, all atoms (Å ²)	16.0	wwPDB-VP

Xtriage's analysis on translational NCS is as follows: *The largest off-origin peak in the Patterson function is 5.44% of the height of the origin peak. No significant pseudotranslation is detected.*

¹Intensities estimated from amplitudes.

²Theoretical values of $\langle |L| \rangle$, $\langle L^2 \rangle$ for acentric reflections are 0.5, 0.333 respectively for untwinned datasets, and 0.375, 0.2 for perfectly twinned datasets.

5 Model quality

5.1 Standard geometry

Bond lengths and bond angles in the following residue types are not validated in this section: FDA, NAD

The Z score for a bond length (or angle) is the number of standard deviations the observed value is removed from the expected value. A bond length (or angle) with $|Z| > 5$ is considered an outlier worth inspection. RMSZ is the root-mean-square of all Z scores of the bond lengths (or angles).

Mol	Chain	Bond lengths		Bond angles	
		RMSZ	$\# Z > 5$	RMSZ	$\# Z > 5$
1	A	1.41	32/2589 (1.2%)	1.19	22/3507 (0.6%)

Chiral center outliers are detected by calculating the chiral volume of a chiral center and verifying if the center is modelled as a planar moiety or with the opposite hand. A planarity outlier is detected by checking planarity of atoms in a peptide group, atoms in a mainchain group or atoms of a sidechain that are expected to be planar.

Mol	Chain	#Chirality outliers	#Planarity outliers
1	A	0	2

All (32) bond length outliers are listed below:

Mol	Chain	Res	Type	Atoms	Z	Observed(Å)	Ideal(Å)
1	A	40[A]	HIS	CE1-NE2	11.48	1.44	1.32
1	A	89	HIS	CD2-NE2	9.09	1.47	1.37
1	A	132	PRO	C-N	8.39	1.44	1.33
1	A	142[A]	THR	C-N	-8.25	1.22	1.33
1	A	142[B]	THR	C-N	-8.25	1.22	1.33
1	A	266	LYS	C-N	-6.77	1.24	1.33
1	A	22	GLU	C-N	-6.72	1.25	1.33
1	A	229	ILE	CA-CB	-6.65	1.46	1.54
1	A	88	THR	CA-C	-6.16	1.44	1.52
1	A	137	SER	C-N	-6.12	1.25	1.33
1	A	55[A]	ARG	C-N	6.10	1.41	1.33
1	A	55[B]	ARG	C-N	6.10	1.41	1.33
1	A	226	GLU	CA-C	-6.06	1.45	1.52
1	A	56[A]	ILE	N-CA	-6.00	1.38	1.46
1	A	15	PRO	CA-C	-5.97	1.47	1.52
1	A	2	THR	C-N	-5.90	1.25	1.33
1	A	253[A]	TYR	C-N	5.89	1.41	1.33
1	A	253[B]	TYR	C-N	5.89	1.41	1.33

Continued on next page...

Continued from previous page...

Mol	Chain	Res	Type	Atoms	Z	Observed(Å)	Ideal(Å)
1	A	190	ARG	N-CA	-5.88	1.41	1.46
1	A	89	HIS	ND1-CE1	5.82	1.38	1.32
1	A	40[A]	HIS	ND1-CE1	-5.80	1.26	1.32
1	A	29	ARG	CA-CB	-5.70	1.43	1.53
1	A	15	PRO	CA-CB	5.62	1.60	1.53
1	A	53	SER	C-N	5.61	1.40	1.33
1	A	190	ARG	CA-C	-5.59	1.45	1.52
1	A	190	ARG	CA-CB	5.49	1.60	1.53
1	A	69	SER	CA-C	-5.46	1.46	1.53
1	A	37	SER	N-CA	-5.40	1.40	1.45
1	A	45	PRO	CA-C	-5.37	1.45	1.52
1	A	25[A]	ASN	CA-CB	-5.17	1.46	1.54
1	A	163	ARG	CD-NE	-5.17	1.39	1.46
1	A	89	HIS	CA-C	-5.01	1.45	1.52

All (22) bond angle outliers are listed below:

Mol	Chain	Res	Type	Atoms	Z	Observed(°)	Ideal(°)
1	A	40[A]	HIS	CE1-NE2-CD2	-8.41	100.59	109.00
1	A	89	HIS	ND1-CG-CD2	6.73	112.83	106.10
1	A	89	HIS	CE1-NE2-CD2	-6.51	102.49	109.00
1	A	60[A]	LEU	CA-C-N	6.31	131.76	122.99
1	A	60[A]	LEU	C-N-CA	6.31	131.76	122.99
1	A	60[B]	LEU	CA-C-N	6.31	131.76	122.99
1	A	60[B]	LEU	C-N-CA	6.31	131.76	122.99
1	A	54	ALA	O-C-N	6.01	129.85	123.42
1	A	89	HIS	ND1-CE1-NE2	6.00	114.39	108.40
1	A	260[A]	GLU	O-C-N	-5.87	115.90	122.12
1	A	260[B]	GLU	O-C-N	-5.87	115.90	122.12
1	A	55[A]	ARG	CA-C-N	5.59	130.53	123.10
1	A	55[A]	ARG	C-N-CA	5.59	130.53	123.10
1	A	55[B]	ARG	CA-C-N	5.59	130.53	123.10
1	A	55[B]	ARG	C-N-CA	5.59	130.53	123.10
1	A	186	ASP	CA-C-N	-5.41	113.44	120.63
1	A	186	ASP	C-N-CA	-5.41	113.44	120.63
1	A	176	HIS	ND1-CE1-NE2	5.36	113.76	108.40
1	A	232	HIS	CA-CB-CG	-5.22	108.58	113.80
1	A	59	ASN	O-C-N	5.11	129.80	123.15
1	A	138	PRO	N-CA-CB	-5.10	98.03	103.38
1	A	264	HIS	O-C-N	5.02	125.58	121.31

There are no chirality outliers.

All (2) planarity outliers are listed below:

Mol	Chain	Res	Type	Group
1	A	230[A]	ARG	Sidechain
1	A	8	GLU	Mainchain

5.2 Too-close contacts

In the following table, the Non-H and H(model) columns list the number of non-hydrogen atoms and hydrogen atoms in the chain respectively. The H(added) column lists the number of hydrogen atoms added and optimized by MolProbity. The Clashes column lists the number of clashes within the asymmetric unit, whereas Symm-Clashes lists symmetry-related clashes.

Mol	Chain	Non-H	H(model)	H(added)	Clashes	Symm-Clashes
1	A	2526	1250	2395	37	0
2	A	71	17	24	1	0
3	A	44	16	26	0	0
4	A	490	0	0	17	0
All	All	3131	1283	2445	37	0

The all-atom clashscore is defined as the number of clashes found per 1000 atoms (including hydrogen atoms). The all-atom clashscore for this structure is 7.

All (37) close contacts within the same asymmetric unit are listed below, sorted by their clash magnitude.

Atom-1	Atom-2	Interatomic distance (Å)	Clash overlap (Å)
1:A:192[B]:GLU:HG3	4:A:569:HOH:O	1.35	1.25
1:A:23[B]:VAL:CG2	4:A:759:HOH:O	1.84	1.23
1:A:55[A]:ARG:HG2	1:A:55[A]:ARG:HH11	0.94	1.09
1:A:127[B]:LYS:HE2	4:A:407:HOH:O	1.53	1.08
1:A:23[B]:VAL:HG22	4:A:759:HOH:O	1.50	1.01
1:A:55[A]:ARG:HG2	1:A:55[A]:ARG:NH1	1.66	1.01
1:A:134:LYS:NZ	4:A:409:HOH:O	1.98	0.97
1:A:134:LYS:HE2	4:A:665[A]:HOH:O	1.69	0.91
1:A:55[A]:ARG:HH11	1:A:55[A]:ARG:CG	1.83	0.84
1:A:201[B]:SER:HB3	4:A:468[B]:HOH:O	1.80	0.80
1:A:141[A]:LYS:HB2	4:A:750[A]:HOH:O	1.84	0.77
1:A:127[B]:LYS:CE	4:A:407:HOH:O	2.21	0.77
1:A:196[B]:LEU:HB3	1:A:204:PHE:CD2	2.28	0.68
1:A:44:LEU:HD12	1:A:116:PRO:HB3	1.74	0.68
1:A:266:LYS:HE2	4:A:692:HOH:O	1.95	0.65
1:A:55[A]:ARG:NH1	1:A:55[A]:ARG:CG	2.49	0.63

Continued on next page...

Continued from previous page...

Atom-1	Atom-2	Interatomic distance (Å)	Clash overlap (Å)
1:A:127[B]:LYS:NZ	4:A:407:HOH:O	2.32	0.62
1:A:30[B]:ARG:C	1:A:30[B]:ARG:HD2	2.28	0.58
1:A:9[A]:ASN:OD1	1:A:10[A]:PRO:HD2	2.04	0.57
1:A:107[A]:ILE:O	1:A:107[A]:ILE:HG13	2.06	0.56
1:A:201[B]:SER:CB	4:A:468[B]:HOH:O	2.47	0.53
1:A:214[B]:PRO:HD2	1:A:217:TRP:HB2	1.90	0.53
1:A:197[B]:ARG:NH1	1:A:219:TYR:OH	2.36	0.52
1:A:190:ARG:N	1:A:191[B]:PRO:CD	2.72	0.52
1:A:44:LEU:CD1	1:A:116:PRO:HB3	2.38	0.51
1:A:268[A]:ARG:HG2	1:A:268[A]:ARG:HH11	1.79	0.48
1:A:127[A]:LYS:HG3	1:A:140[A]:ILE:HG23	1.94	0.48
1:A:24[B]:VAL:HG13	4:A:657:HOH:O	2.13	0.46
1:A:127[A]:LYS:HD3	4:A:420:HOH:O	2.14	0.46
1:A:95:GLY:HA2	2:A:301[A]:FDA:N7A	2.31	0.45
1:A:207:TRP:CD2	1:A:232:HIS:CE1	3.04	0.45
1:A:194[A]:GLU:CD	4:A:483:HOH:O	2.59	0.45
1:A:5[B]:ILE:HD12	1:A:8:GLU:HA	1.99	0.45
1:A:181:ASN:O	1:A:210:VAL:HA	2.18	0.43
1:A:167:LYS:NZ	4:A:469[B]:HOH:O	2.30	0.41
1:A:167:LYS:CE	4:A:469[B]:HOH:O	2.68	0.41
1:A:141[B]:LYS:NZ	1:A:267:GLU:O	2.52	0.40

There are no symmetry-related clashes.

5.3 Torsion angles ⓘ

5.3.1 Protein backbone ⓘ

In the following table, the Percentiles column shows the percent Ramachandran outliers of the chain as a percentile score with respect to all X-ray entries followed by that with respect to entries of similar resolution.

The Analysed column shows the number of residues for which the backbone conformation was analysed, and the total number of residues.

Mol	Chain	Analysed	Favoured	Allowed	Outliers	Percentiles	
1	A	312/272 (115%)	300 (96%)	12 (4%)	0	100	100

There are no Ramachandran outliers to report.

5.3.2 Protein sidechains [i](#)

In the following table, the Percentiles column shows the percent sidechain outliers of the chain as a percentile score with respect to all X-ray entries followed by that with respect to entries of similar resolution.

The Analysed column shows the number of residues for which the sidechain conformation was analysed, and the total number of residues.

Mol	Chain	Analysed	Rotameric	Outliers	Percentiles
1	A	281/241 (117%)	274 (98%)	7 (2%)	42 10

All (7) residues with a non-rotameric sidechain are listed below:

Mol	Chain	Res	Type
1	A	55[A]	ARG
1	A	55[B]	ARG
1	A	106	LYS
1	A	160[A]	GLN
1	A	160[B]	GLN
1	A	199[A]	GLU
1	A	199[B]	GLU

Sometimes sidechains can be flipped to improve hydrogen bonding and reduce clashes. There are no such sidechains identified.

5.3.3 RNA [i](#)

There are no RNA molecules in this entry.

5.4 Non-standard residues in protein, DNA, RNA chains [i](#)

There are no non-standard protein/DNA/RNA residues in this entry.

5.5 Carbohydrates [i](#)

There are no oligosaccharides in this entry.

5.6 Ligand geometry [i](#)

3 ligands are modelled in this entry.

In the following table, the Counts columns list the number of bonds (or angles) for which Mogul statistics could be retrieved, the number of bonds (or angles) that are observed in the model and the number of bonds (or angles) that are defined in the Chemical Component Dictionary. The Link column lists molecule types, if any, to which the group is linked. The Z score for a bond length (or angle) is the number of standard deviations the observed value is removed from the expected value. A bond length (or angle) with $|Z| > 2$ is considered an outlier worth inspection. RMSZ is the root-mean-square of all Z scores of the bond lengths (or angles).

Mol	Type	Chain	Res	Link	Bond lengths			Bond angles		
					Counts	RMSZ	# $ Z > 2$	Counts	RMSZ	# $ Z > 2$
2	FDA	A	301[B]	-	52,58,58	1.00	3 (5%)	60,89,89	1.04	2 (3%)
3	NAD	A	302	-	42,48,48	1.00	3 (7%)	50,73,73	0.83	0
2	FDA	A	301[A]	-	52,58,58	1.01	3 (5%)	60,89,89	1.00	2 (3%)

In the following table, the Chirals column lists the number of chiral outliers, the number of chiral centers analysed, the number of these observed in the model and the number defined in the Chemical Component Dictionary. Similar counts are reported in the Torsion and Rings columns. '-' means no outliers of that kind were identified.

Mol	Type	Chain	Res	Link	Chirals	Torsions	Rings
2	FDA	A	301[B]	-	-	3/30/50/50	0/6/6/6
3	NAD	A	302	-	-	4/26/62/62	0/5/5/5
2	FDA	A	301[A]	-	-	2/30/50/50	0/6/6/6

All (9) bond length outliers are listed below:

Mol	Chain	Res	Type	Atoms	Z	Observed(Å)	Ideal(Å)
2	A	301[A]	FDA	C5'-C4'	-2.44	1.48	1.51
2	A	301[B]	FDA	C5'-C4'	-2.44	1.48	1.51
2	A	301[A]	FDA	O4-C4	2.44	1.28	1.23
2	A	301[B]	FDA	O4-C4	2.44	1.28	1.23
2	A	301[A]	FDA	C4X-N5	2.22	1.40	1.35
2	A	301[B]	FDA	C4X-N5	2.22	1.40	1.35
3	A	302	NAD	C4A-N3A	-2.13	1.32	1.35
3	A	302	NAD	C2N-N1N	2.09	1.37	1.35
3	A	302	NAD	C2D-C1D	-2.07	1.50	1.53

All (4) bond angle outliers are listed below:

Mol	Chain	Res	Type	Atoms	Z	Observed(°)	Ideal(°)
2	A	301[B]	FDA	PA-O5B-C5B	3.39	141.58	121.68
2	A	301[A]	FDA	C5A-C6A-N6A	2.96	124.85	120.35
2	A	301[A]	FDA	N3-C2-N1	2.80	120.30	115.80

Continued on next page...

Continued from previous page...

Mol	Chain	Res	Type	Atoms	Z	Observed($^{\circ}$)	Ideal($^{\circ}$)
2	A	301[B]	FDA	N3-C2-N1	2.80	120.30	115.80

There are no chirality outliers.

All (9) torsion outliers are listed below:

Mol	Chain	Res	Type	Atoms
2	A	301[B]	FDA	C5B-O5B-PA-O1A
2	A	301[B]	FDA	C5B-O5B-PA-O2A
3	A	302	NAD	C5D-O5D-PN-O2N
2	A	301[A]	FDA	C3B-C4B-C5B-O5B
3	A	302	NAD	C5D-O5D-PN-O3
2	A	301[A]	FDA	O4B-C4B-C5B-O5B
3	A	302	NAD	O4D-C4D-C5D-O5D
2	A	301[B]	FDA	C5B-O5B-PA-O3P
3	A	302	NAD	C5D-O5D-PN-O1N

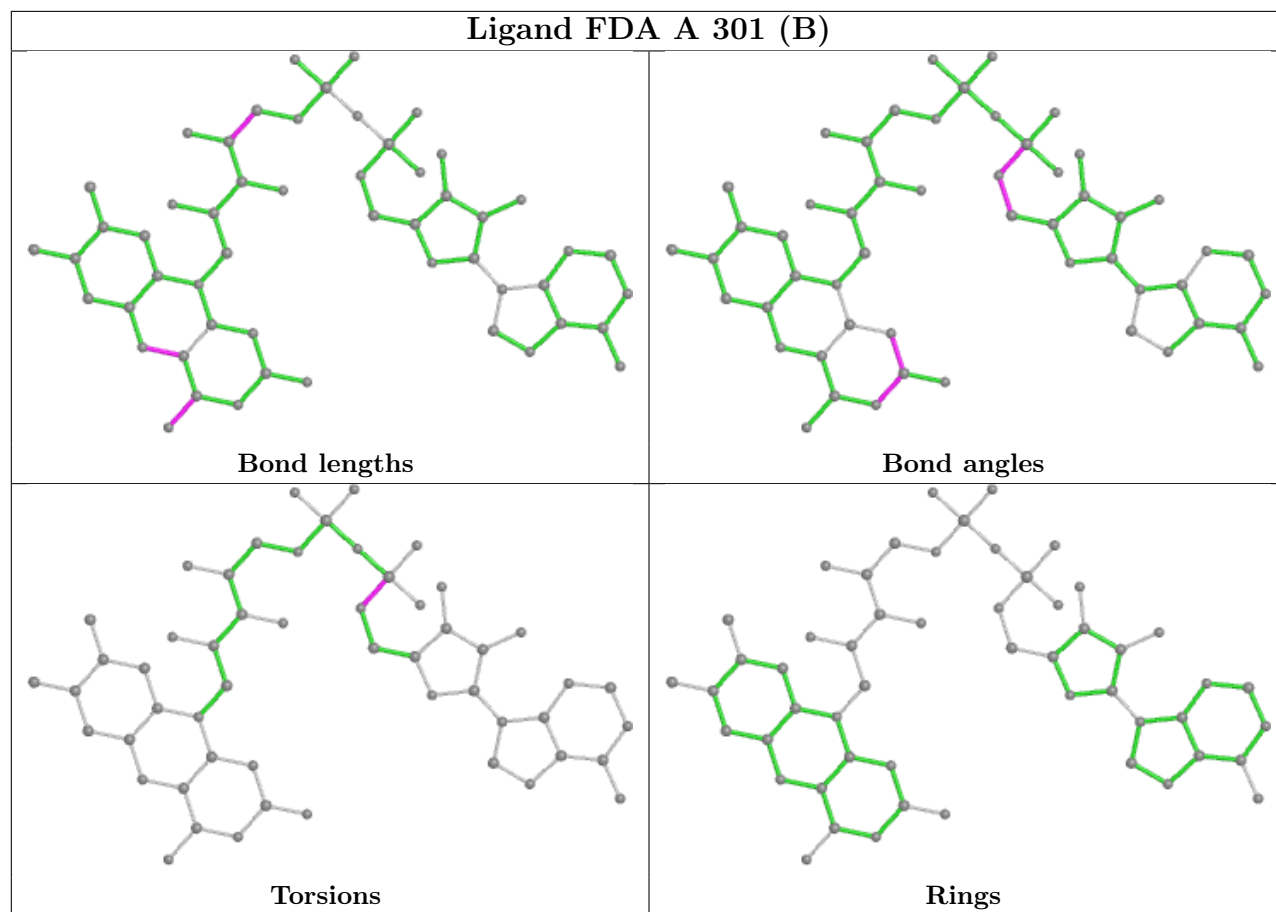
There are no ring outliers.

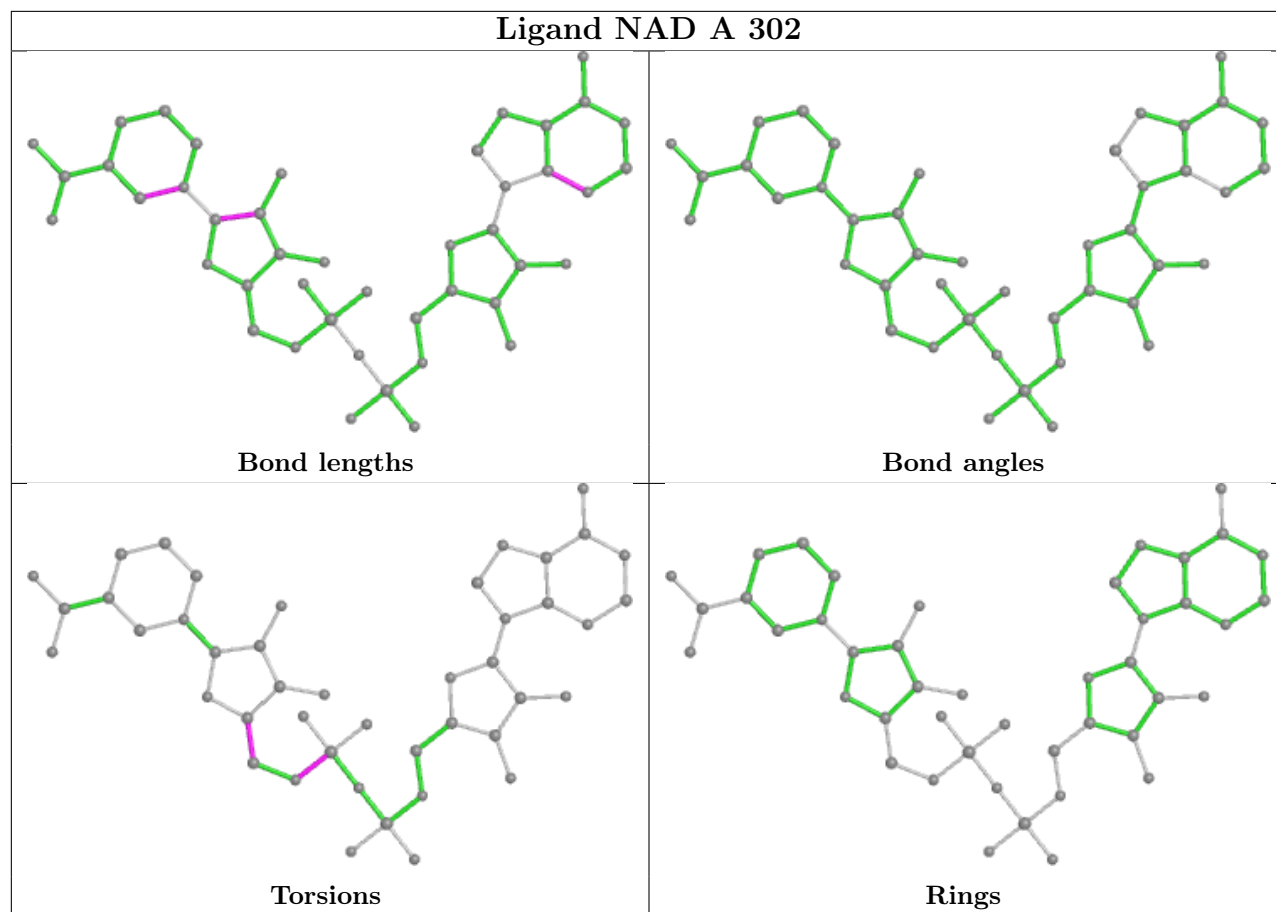
1 monomer is involved in 1 short contact:

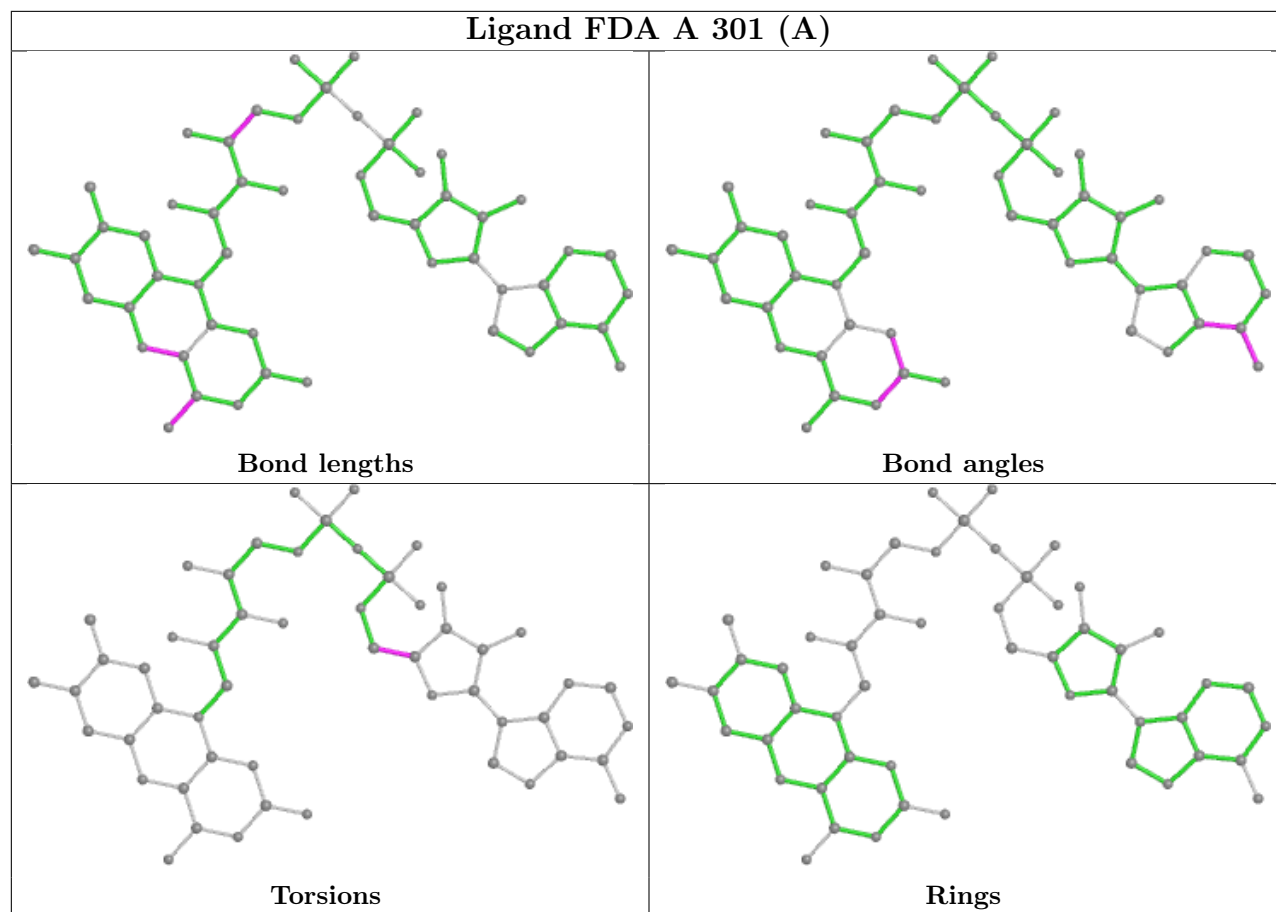
Mol	Chain	Res	Type	Clashes	Symm-Clashes
2	A	301[A]	FDA	1	0

The following is a two-dimensional graphical depiction of Mogul quality analysis of bond lengths, bond angles, torsion angles, and ring geometry for all instances of the Ligand of Interest. In addition, ligands with molecular weight > 250 and outliers as shown on the validation Tables will also be included. For torsion angles, if less than 5% of the Mogul distribution of torsion angles is within 10 degrees of the torsion angle in question, then that torsion angle is considered an outlier. Any bond that is central to one or more torsion angles identified as an outlier by Mogul will be highlighted in the graph. For rings, the root-mean-square deviation (RMSD) between the ring in question and similar rings identified by Mogul is calculated over all ring torsion angles. If the average RMSD is greater than 60 degrees and the minimal RMSD between the ring in question and any Mogul-identified rings is also greater than 60 degrees, then that ring is considered an outlier. The outliers are highlighted in purple. The color gray indicates Mogul did not find sufficient equivalents in the CSD to analyse the geometry.

Ligand FDA A 301 (B)







5.7 Other polymers [i](#)

There are no such residues in this entry.

5.8 Polymer linkage issues [i](#)

There are no chain breaks in this entry.

6 Fit of model and data ⓘ

6.1 Protein, DNA and RNA chains ⓘ

In the following table, the column labelled ‘#RSRZ> 2’ contains the number (and percentage) of RSRZ outliers, followed by percent RSRZ outliers for the chain as percentile scores relative to all X-ray entries and entries of similar resolution. The OWAB column contains the minimum, median, 95th percentile and maximum values of the occupancy-weighted average B-factor per residue. The column labelled ‘Q< 0.9’ lists the number of (and percentage) of residues with an average occupancy less than 0.9.

Mol	Chain	Analysed	<RSRZ>	#RSRZ>2	OWAB(Å ²)	Q<0.9
1	A	272/272 (100%)	0.72	39 (14%) 7 5	5, 14, 24, 44	42 (15%)

All (39) RSRZ outliers are listed below:

Mol	Chain	Res	Type	RSRZ
1	A	2	THR	6.6
1	A	213[A]	ALA	5.9
1	A	216[A]	ALA	5.9
1	A	107[A]	ILE	5.9
1	A	187	ILE	5.5
1	A	1	SER	5.3
1	A	194[A]	GLU	5.0
1	A	193[A]	LEU	5.0
1	A	57	ASP	4.7
1	A	191[A]	PRO	4.4
1	A	217	TRP	4.4
1	A	214[A]	PRO	4.3
1	A	44	LEU	3.8
1	A	9[A]	ASN	3.8
1	A	141[A]	LYS	3.8
1	A	198[A]	ASN	3.7
1	A	215[A]	GLU	3.6
1	A	192[A]	GLU	3.6
1	A	132	PRO	3.4
1	A	238[A]	GLU	3.2
1	A	30[A]	ARG	3.2
1	A	201[A]	SER	3.1
1	A	212[A]	ARG	3.1
1	A	199[A]	GLU	3.0
1	A	90	PRO	2.9
1	A	218	ASP	2.9
1	A	134	LYS	2.9

Continued on next page...

Continued from previous page...

Mol	Chain	Res	Type	RSRZ
1	A	127[A]	LYS	2.8
1	A	135	LYS	2.7
1	A	10[A]	PRO	2.7
1	A	142[A]	THR	2.6
1	A	197[A]	ARG	2.5
1	A	11[A]	ASP	2.5
1	A	55[A]	ARG	2.5
1	A	195[A]	GLU	2.4
1	A	106	LYS	2.3
1	A	175	CYS	2.3
1	A	239[A]	GLU	2.3
1	A	12[A]	ILE	2.1

6.2 Non-standard residues in protein, DNA, RNA chains ⓘ

There are no non-standard protein/DNA/RNA residues in this entry.

6.3 Carbohydrates ⓘ

There are no oligosaccharides in this entry.

6.4 Ligands ⓘ

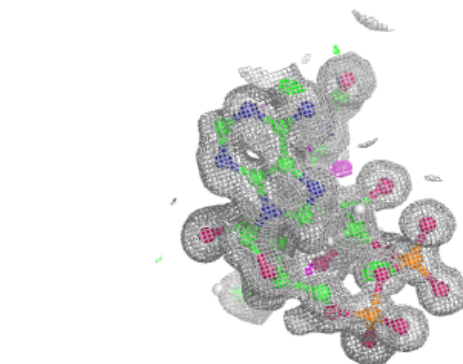
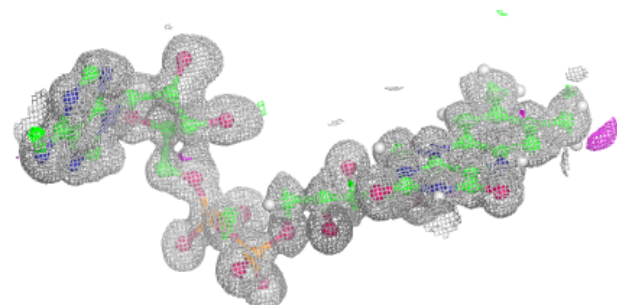
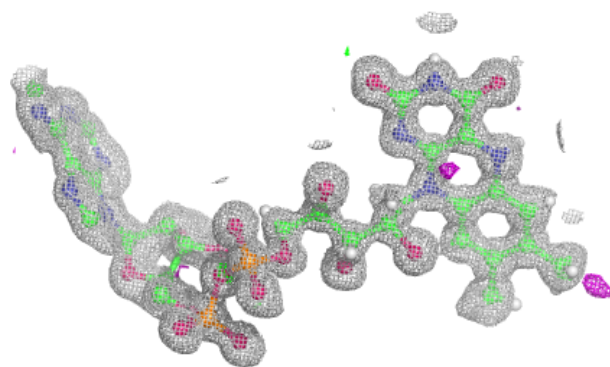
In the following table, the Atoms column lists the number of modelled atoms in the group and the number defined in the chemical component dictionary. The B-factors column lists the minimum, median, 95th percentile and maximum values of B factors of atoms in the group. The column labelled 'Q< 0.9' lists the number of atoms with occupancy less than 0.9.

Mol	Type	Chain	Res	Atoms	RSCC	RSR	B-factors(Å ²)	Q<0.9
2	FDA	A	301[A]	53/53	0.99	0.04	7,9,13,13	18
2	FDA	A	301[B]	53/53	0.99	0.04	7,9,13,16	18
3	NAD	A	302	44/44	0.99	0.05	8,10,13,15	0

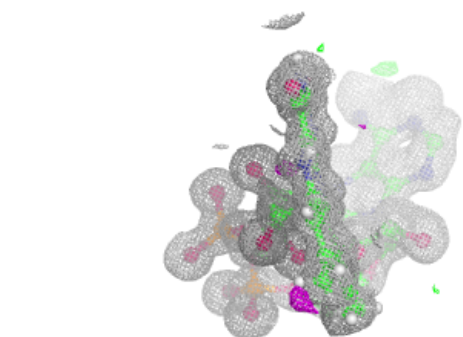
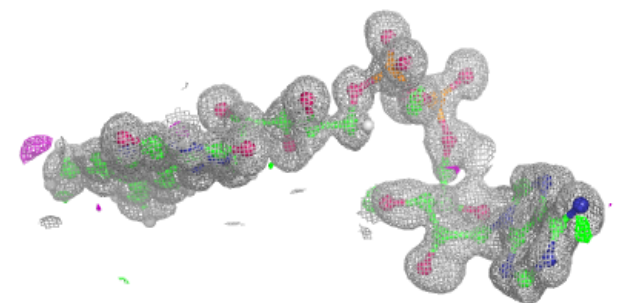
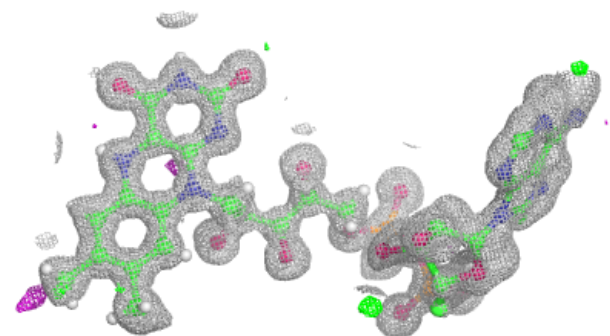
The following is a graphical depiction of the model fit to experimental electron density of all instances of the Ligand of Interest. In addition, ligands with molecular weight > 250 and outliers as shown on the geometry validation Tables will also be included. Each fit is shown from different orientation to approximate a three-dimensional view.

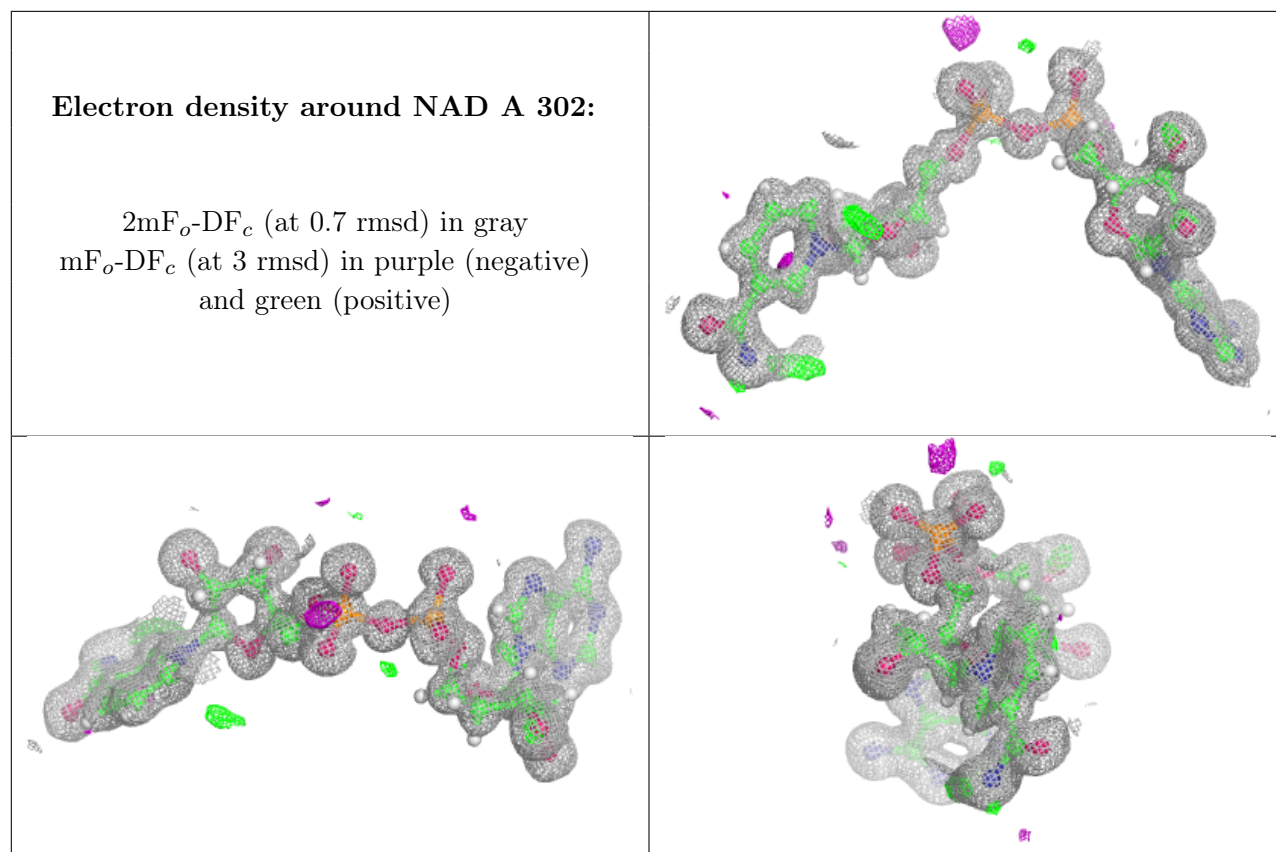
Electron density around FDA A 301 (A):

$2mF_o-DF_c$ (at 0.7 rmsd) in gray
 mF_o-DF_c (at 3 rmsd) in purple (negative)
and green (positive)

**Electron density around FDA A 301 (B):**

$2mF_o-DF_c$ (at 0.7 rmsd) in gray
 mF_o-DF_c (at 3 rmsd) in purple (negative)
and green (positive)





6.5 Other polymers [i](#)

There are no such residues in this entry.